

V&V Reference Report

L2 ASCDS Version : 7.6.8

Observation 4087 - L2 Version 001
Chandra X-Ray Center

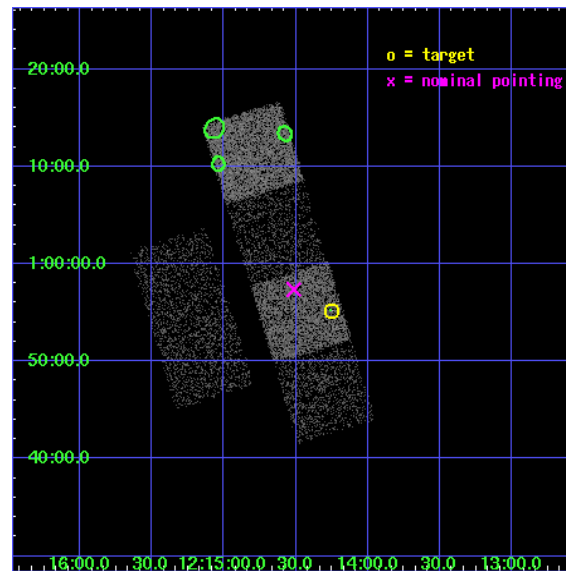
L2 Processing Date : Jul 20 2006

Contents

1	Front	2
2	OBI	3
2.1	OBI	3
2.1.1	Images	3
2.1.2	Bias	3
2.1.3	Parameters	4
2.1.4	Events	4
2.2	Compared Parameters	5
2.3	Aspect	6
2.4	Star Slots	9
2.4.1	Slot 3	9
2.4.2	Slot 4	10
2.4.3	Slot 5	11
2.4.4	Slot 6	12
2.4.5	Slot 7	13
2.5	FID Slots	14
2.5.1	Slot 0	14
2.5.2	Slot 1	15
2.5.3	Slot 2	16
3	Point Sources	17
A	Summary	18
A.1	Status	18
A.2	Comments	18

1 Front

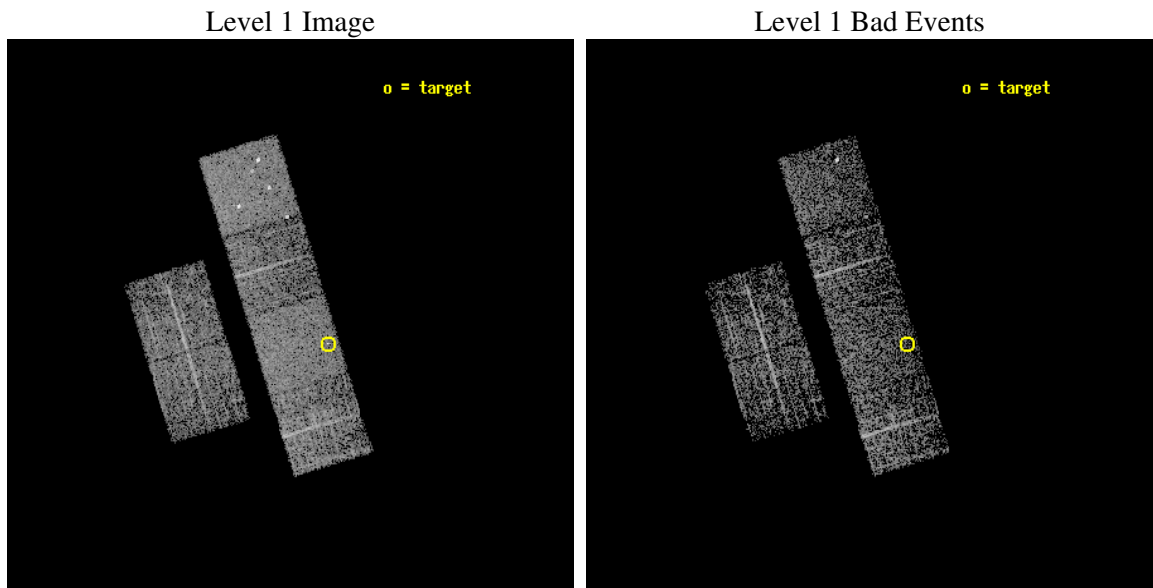
seq_num	700766
obs_id	4087
title	ARE ALL NARROW-LINE SEYFERT 1S ULTRASOFT X-RAY SOURCES?
observer	Prof RICHARD POGGE
object	SDSS J121415.17+005511.4
dtcycle	0
cycle	P
ra_targ	183.563333
dec_targ	0.919833
ra_nom	183.62853265641
dec_nom	0.95625798047461
roll_nom	73.011936493415
revision	2
ontime	1983.999992609
liveltime	1958.8773900812
ontime2	1983.999992609
ontime3	1980.7590123713
ontime5	1983.999992609
ontime6	1983.999992609
ontime7	1983.999992609
ontime8	1983.999992609
l2events	19606



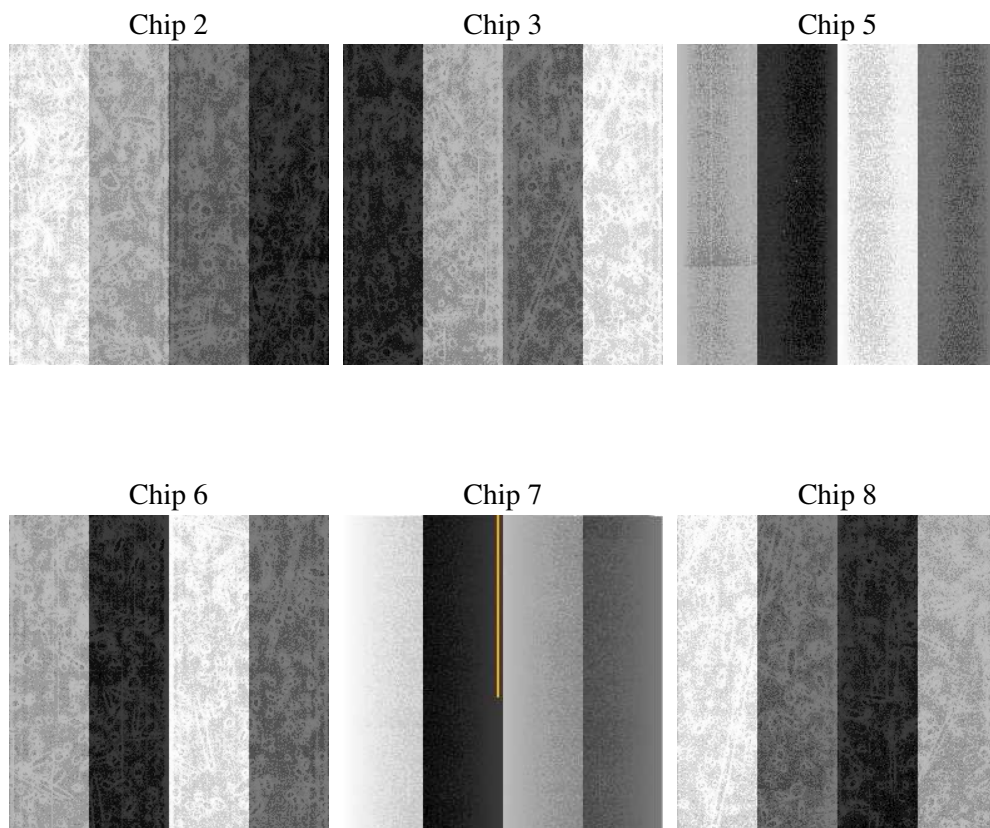
2 OBI

2.1 OBI

2.1.1 Images



2.1.2 Bias



2.1.3 Parameters

obi_num	0
ascdsver	7.6.8
caldsver	3.2.2
date	2006-07-20T18:45:36
revision	2

sched_exp_time	2026.000000
ontime	1989.9792336524
ontime2	1989.9792336524
ontime3	1986.7382335067
ontime5	1989.9792336524
ontime6	1989.9792137444
ontime7	1989.9792336524
ontime8	1989.9792137444
l1events	92581

2.1.4 Events

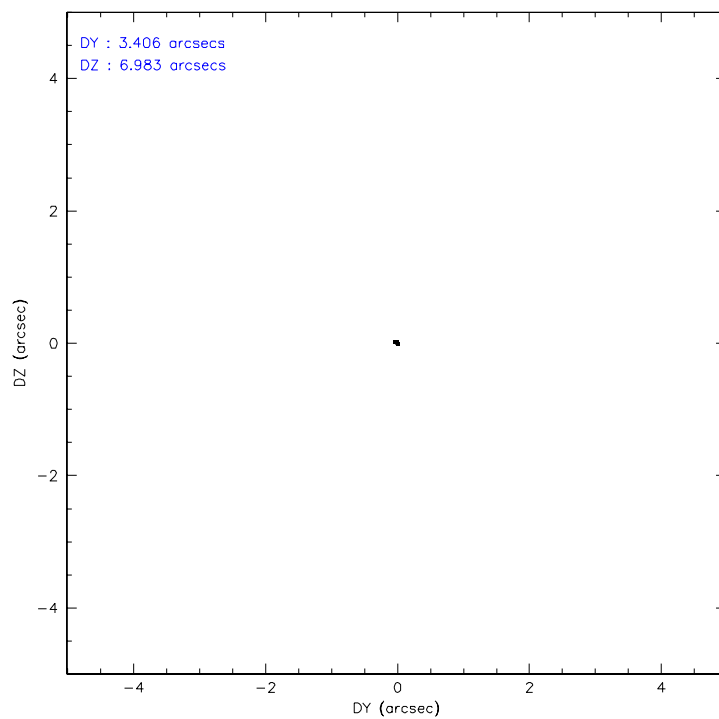
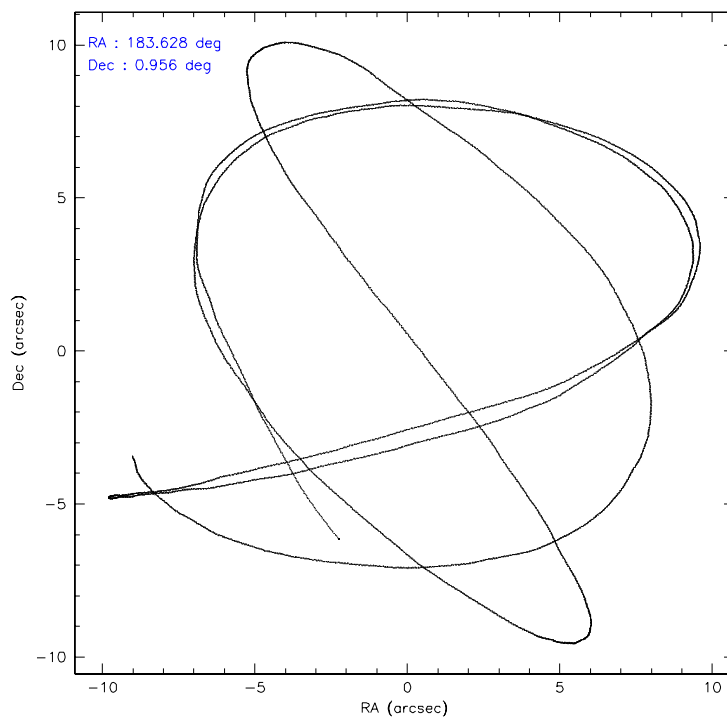
	ccd 2	ccd 3	ccd 5	ccd 6	ccd 7	ccd 8
level 1 events	12982	12442	20364	12961	17379	16453
rejected events	11518	10886	11019	11487	10851	13068
rejected %	88%	87%	54%	88%	62%	79%

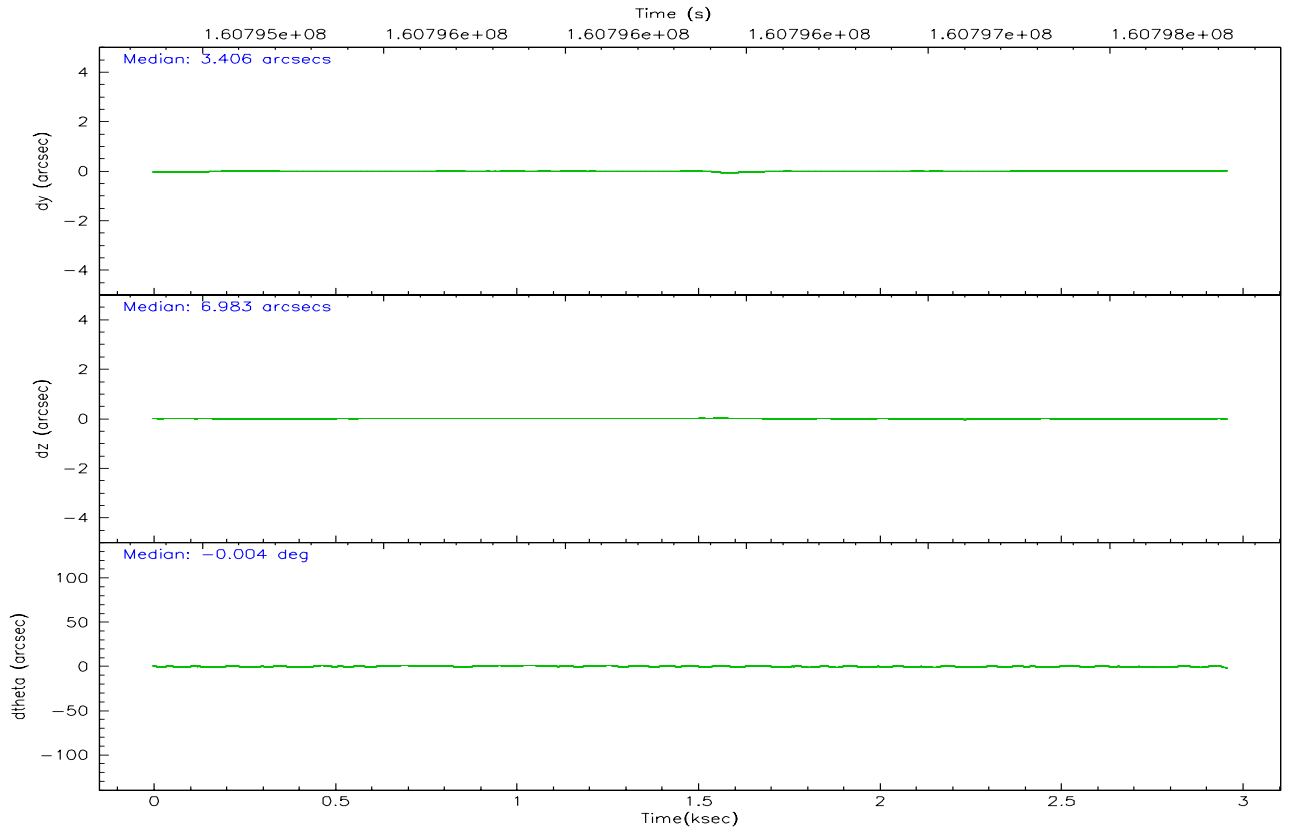
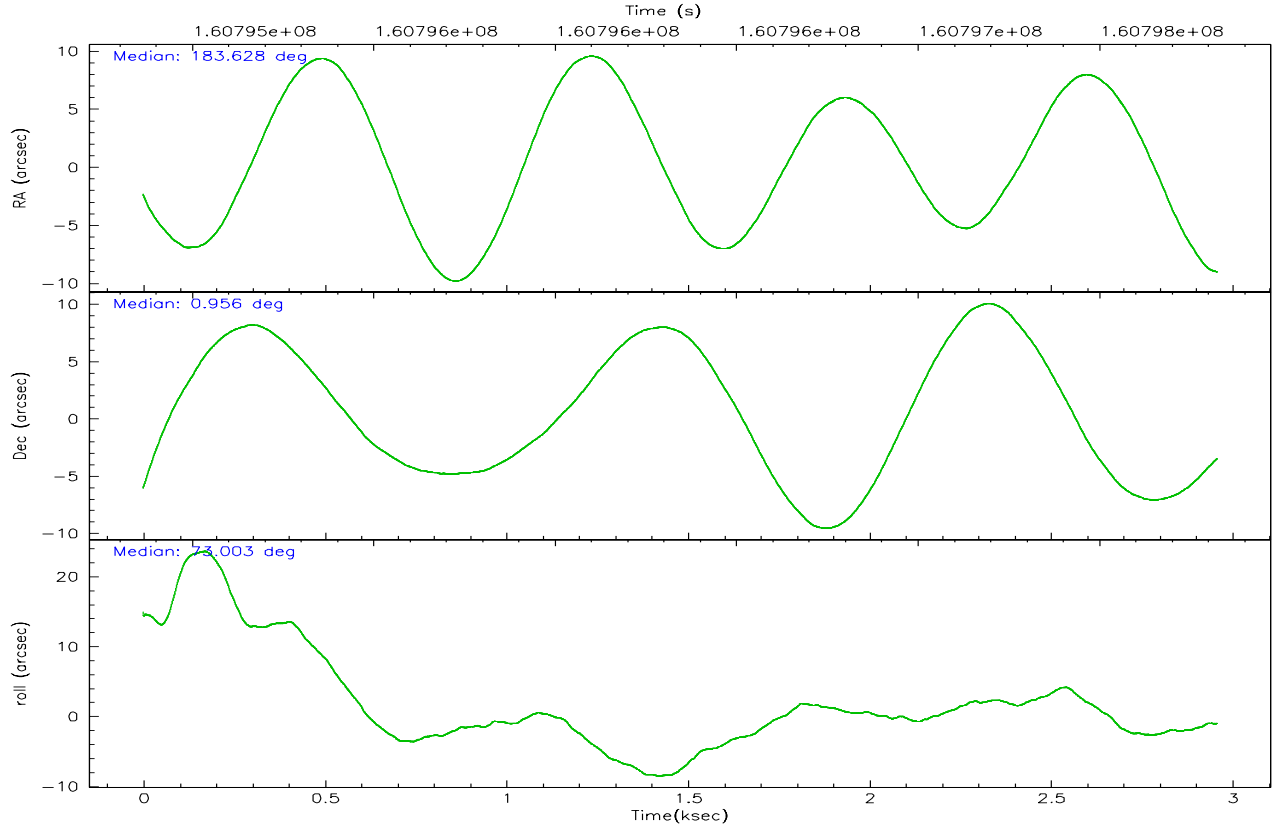
	ccd 2	ccd 3	ccd 5	ccd 6	ccd 7	ccd 8
grade 0 events	646	666	1404	567	455	1076
	4%	5%	6%	4%	2%	6%
grade 1 events	6	5	62	9	9	10
	0%	0%	0%	0%	0%	0%
grade 2 events	278	310	2790	312	1627	743
	2%	2%	13%	2%	9%	4%
grade 3 events	143	172	220	154	338	328
	1%	1%	1%	1%	1%	1%
grade 4 events	143	144	183	143	322	318
	1%	1%	0%	1%	1%	1%
grade 5 events	460	589	1143	571	1147	723
	3%	4%	5%	4%	6%	4%
grade 6 events	256	269	4774	304	3802	937
	1%	2%	23%	2%	21%	5%
grade 7 events	11050	10287	9788	10901	9679	12318
	85%	82%	48%	84%	55%	74%

2.2 Compared Parameters

Parameter	Planned	Actual	Parameter	Planned	Actual
Instrument	ACIS	ACIS	Obspar format version number	6	6
Detector	ACIS-235678	ACIS-235678	Obspar file type	PREDICTED	ACTUAL
Grating	NONE	NONE	Obspar update status	NONE	UPDATED
Data mode	FAINT	FAINT	On-chip summing requested	N	N
Observation mode	POINTING	POINTING	Subarray requested	NONE	NONE
Pointing RA	183.635125	183.6285326564056	Alternating exposures requested	N	N
Pointing Dec	0.929780	0.9562579804746082	Primary exposure time	0.000000	3.2
Pointing Roll	72.855186	73.01193649341542			
SIM focus pos (mm)	-0.684267	-0.6828225247311905			
SIM defocus (mm)	0	0.001444936568705701			
SIM translation stage pos (mm)	-190.132523	-190.1400660498719			
SIM translation stage offset (mm)	0	0.00754346686406393			
Observation start time	160795794.184000	160794458.34408			
Observation start date	2003-02-05T01:28:50	2003-02-05T01:07:38			
Observation end time	160797820.184000	160798654.69425			
Observation end date	2003-02-05T02:02:36	2003-02-05T02:17:34			
Read mode	TIMED	TIMED			

2.3 Aspect



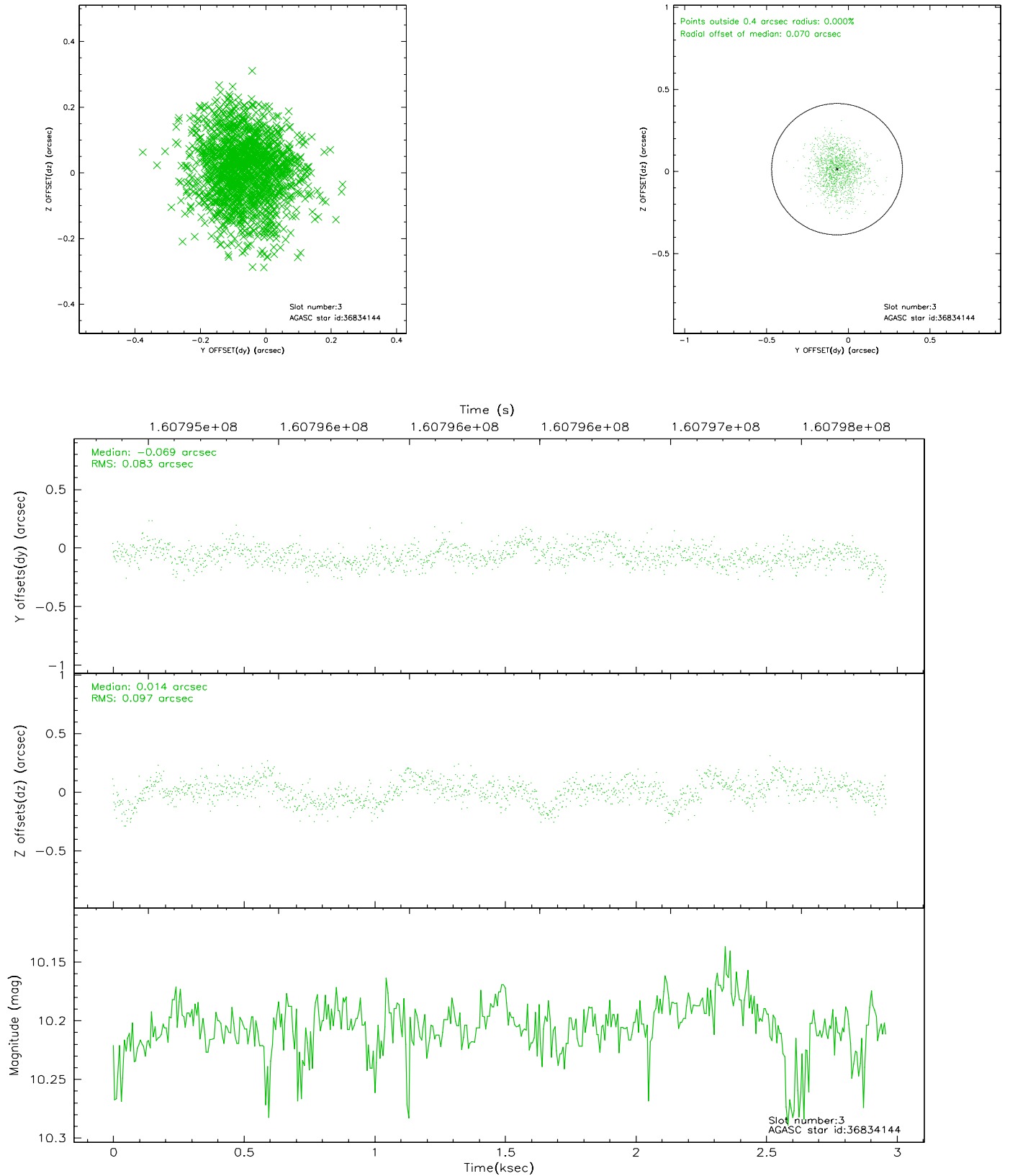


Slot Statistics

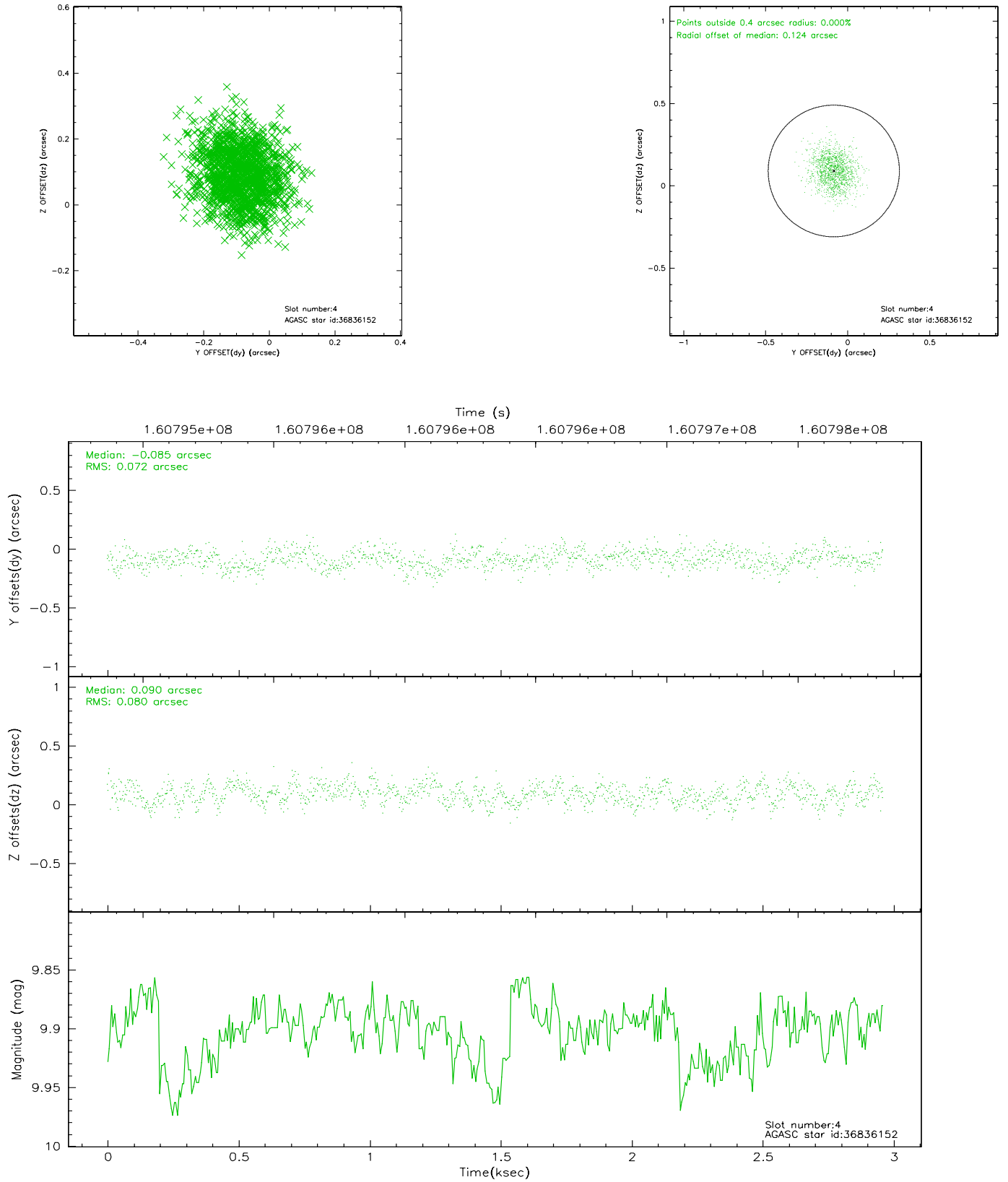
slot	status	id	mag	n_pts	med_dy	med_dz	dr1	dr2	ra	dec	mean_y	mean_z
0	FID	ACIS-S-2	7.12	722	-0.003	0.035	0.006	0.010	0.000000	0.000000	-756.05	-1728.12
1	FID	ACIS-S-4	7.21	722	-0.045	-0.008	0.005	0.008	0.000000	0.000000	2156.20	178.10
2	FID	ACIS-S-5	7.24	723	0.016	-0.018	0.006	0.010	0.000000	0.000000	-1806.10	174.21
3	GUIDE	36834144	10.20	1439	-0.069	0.014	0.136	0.219	184.076794	1.166140	1282.12	-1268.20
4	GUIDE	36836152	9.90	1438	-0.085	0.090	0.115	0.187	183.845730	1.492134	2159.01	-128.00
5	GUIDE	36838728	10.72	1444	0.309	0.157	0.163	0.279	183.661042	0.273288	-2229.03	-786.69
6	GUIDE	36834240	9.10	1445	-0.056	-0.409	0.095	0.160	183.032891	1.169701	184.73	2324.83
7	GUIDE	36834896	10.42	1444	-0.106	0.157	0.149	0.243	184.392524	1.087932	1348.73	-2435.31

2.4 Star Slots

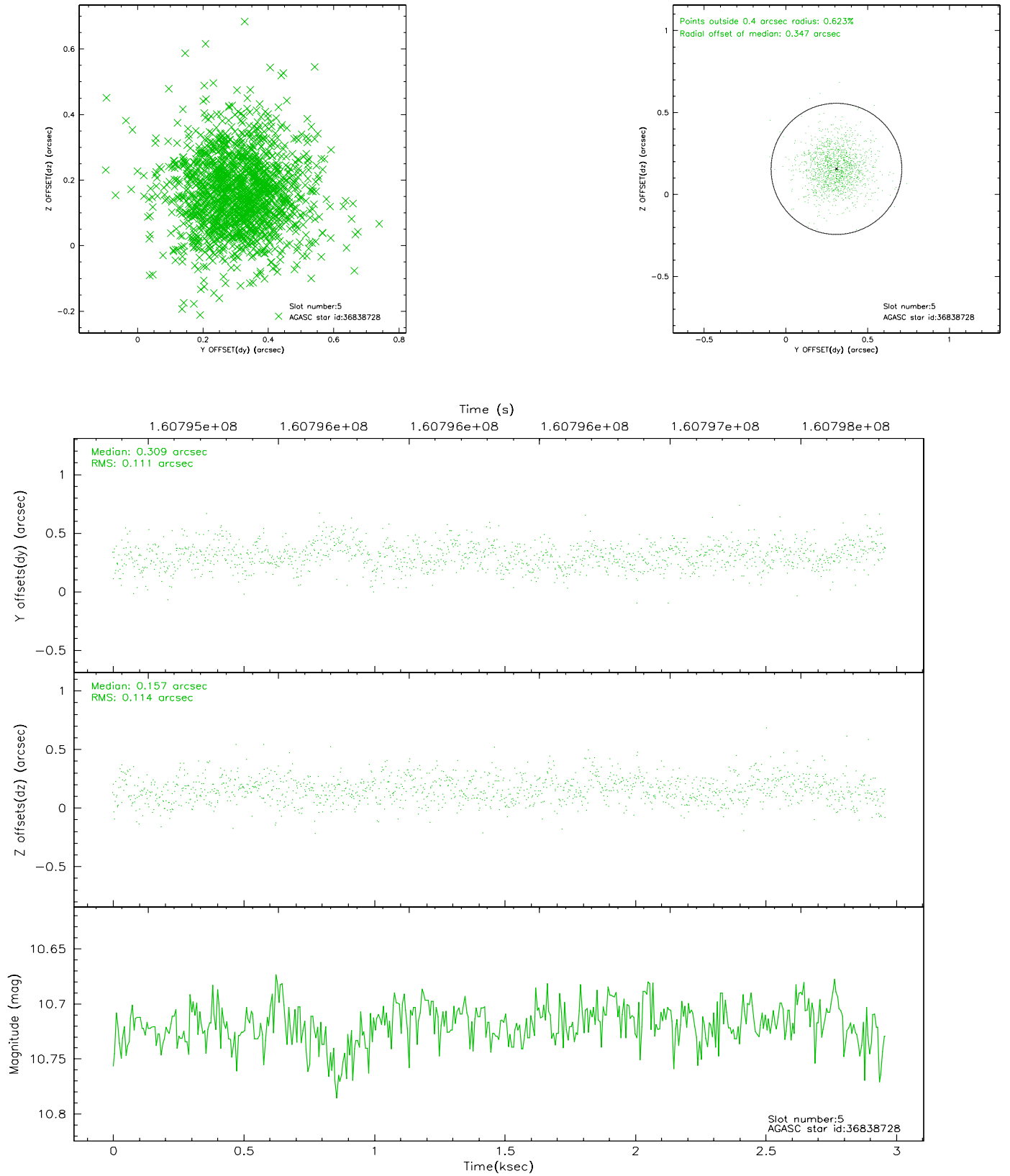
2.4.1 Slot 3



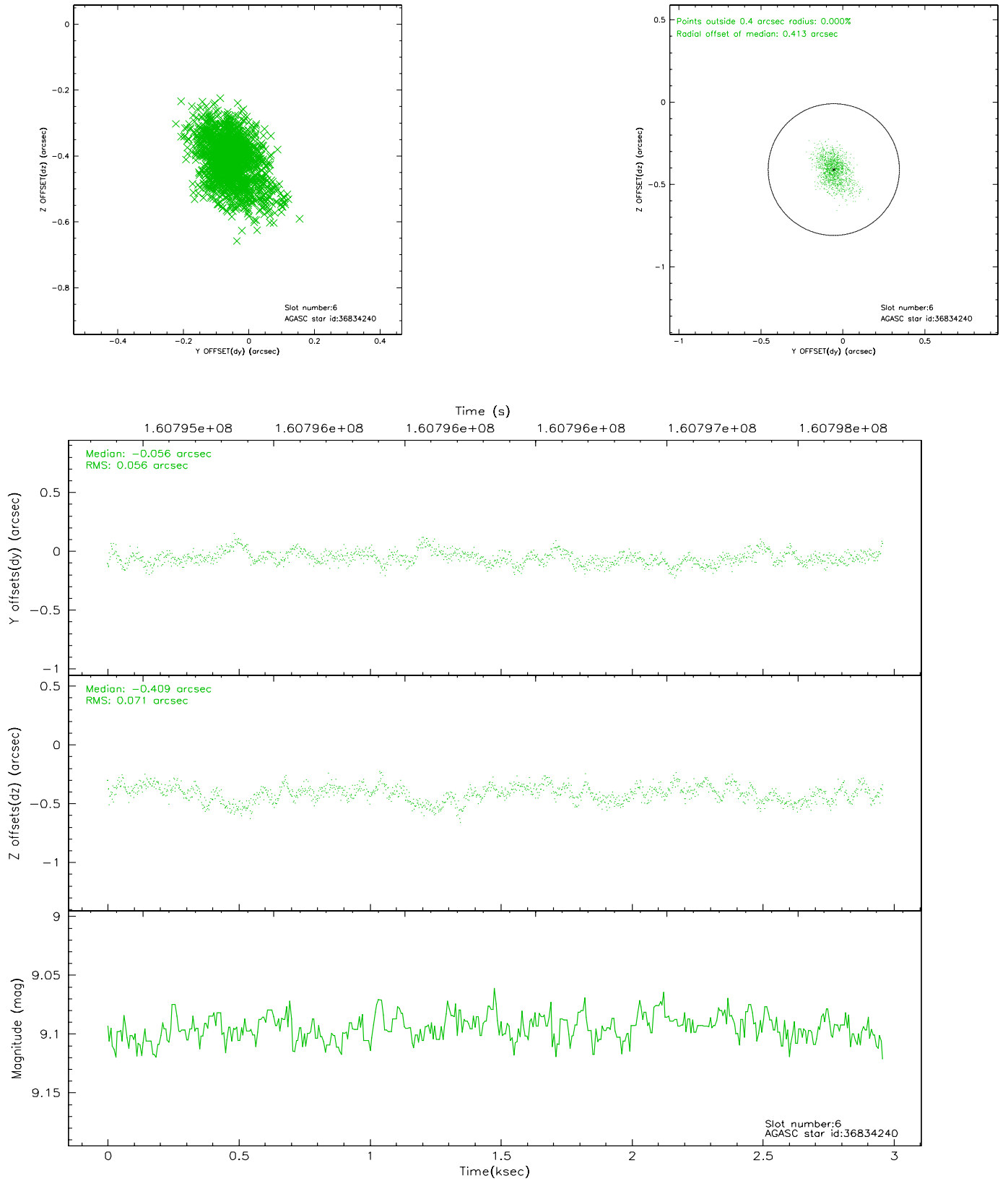
2.4.2 Slot 4



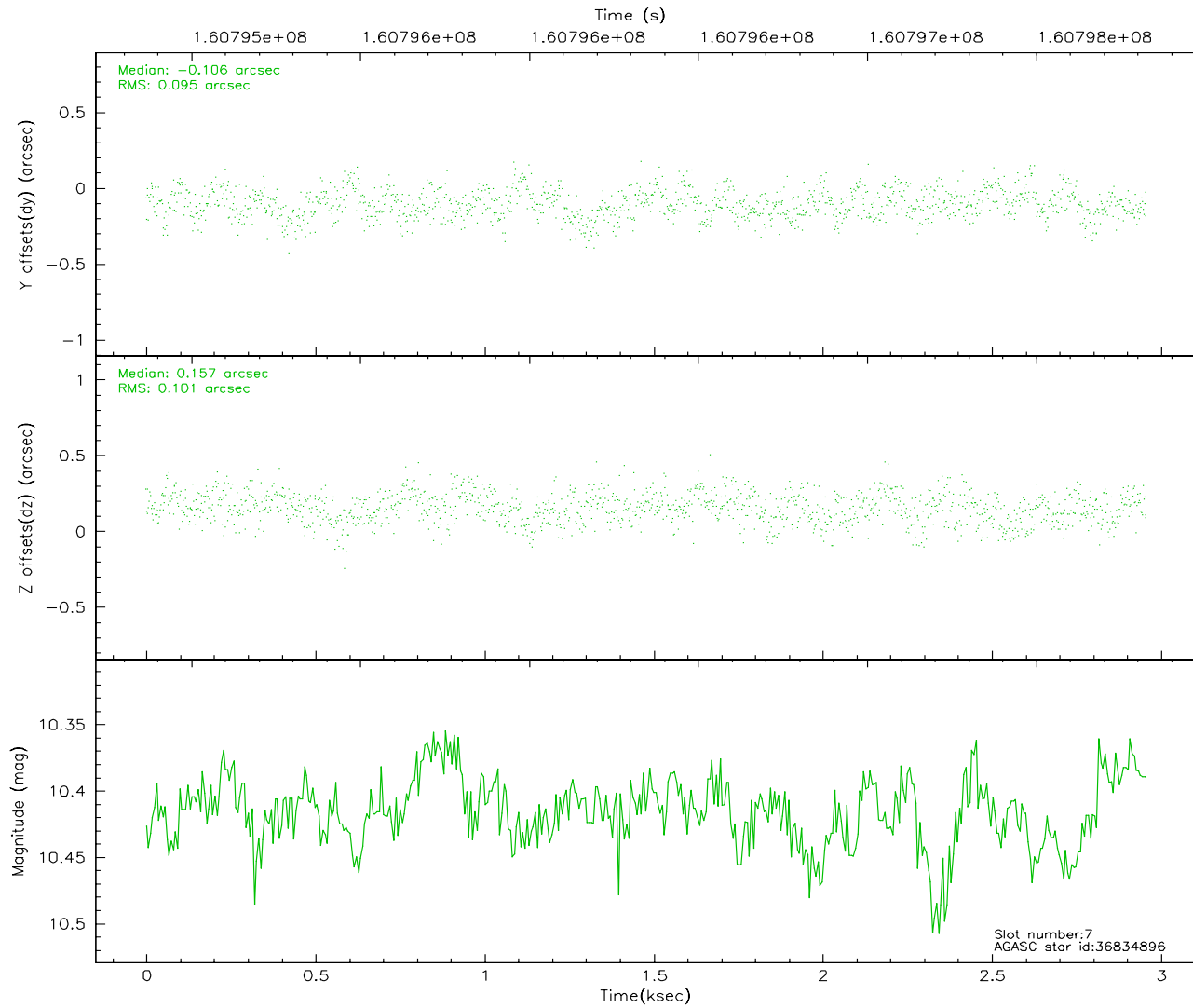
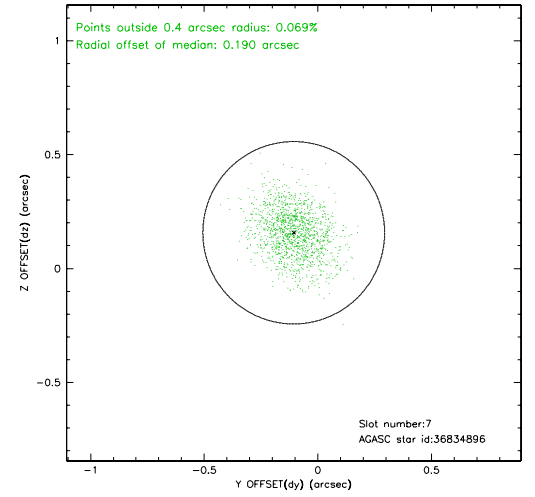
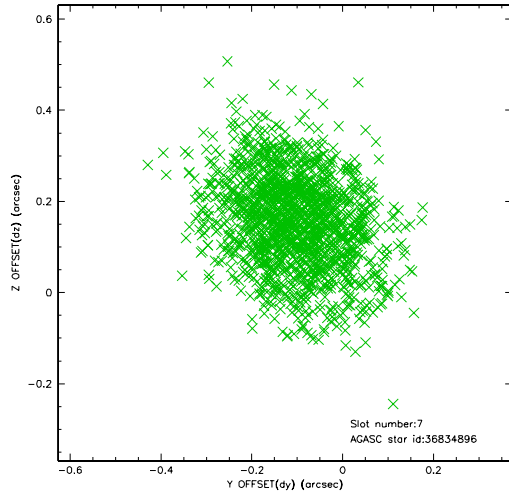
2.4.3 Slot 5



2.4.4 Slot 6

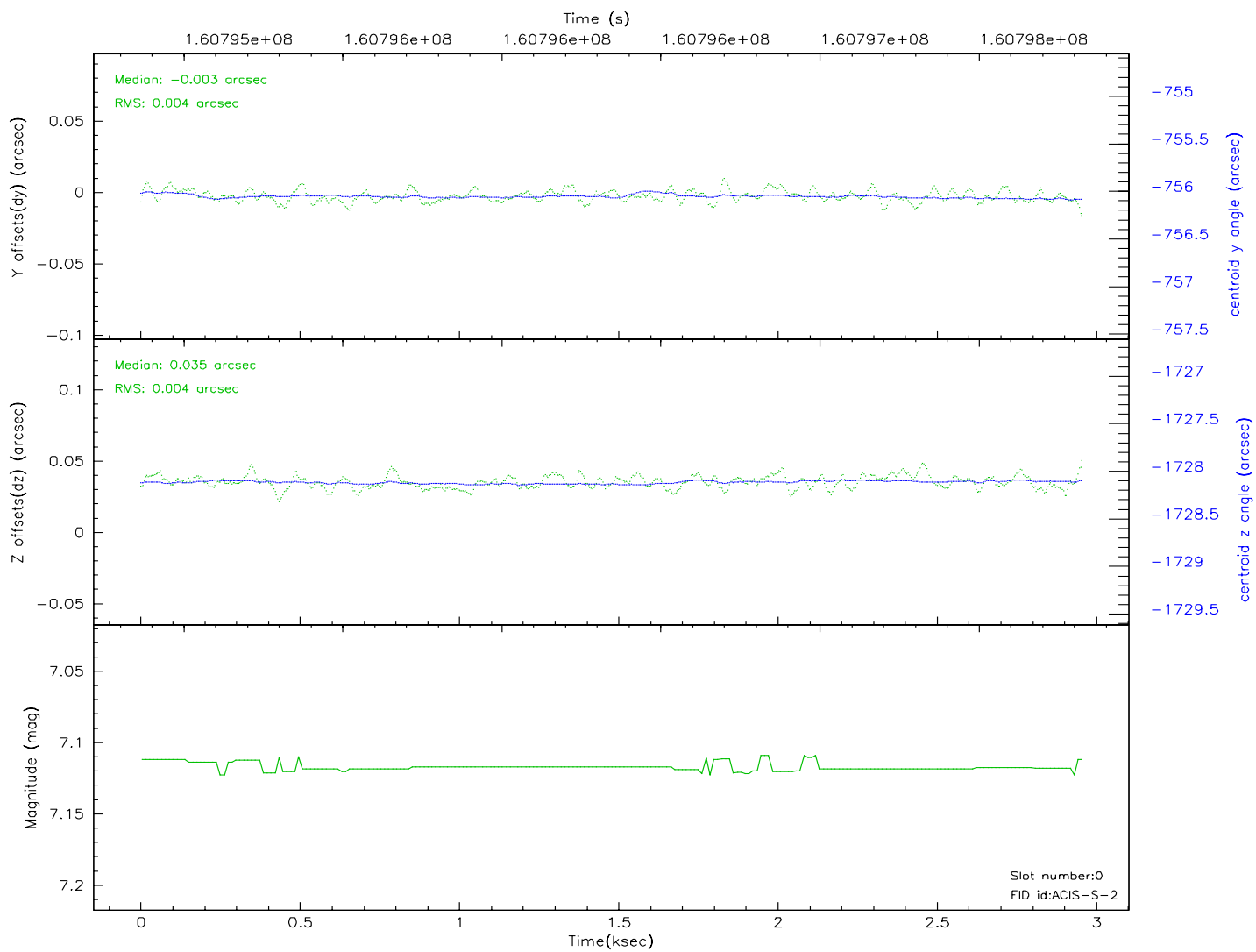
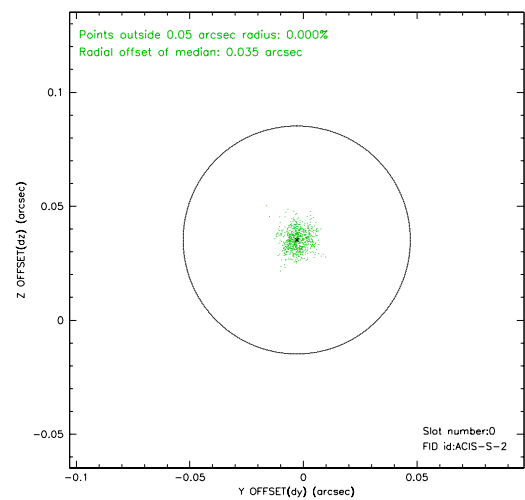
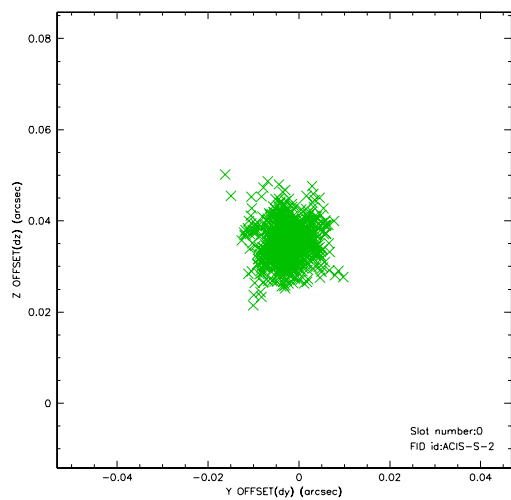


2.4.5 Slot 7

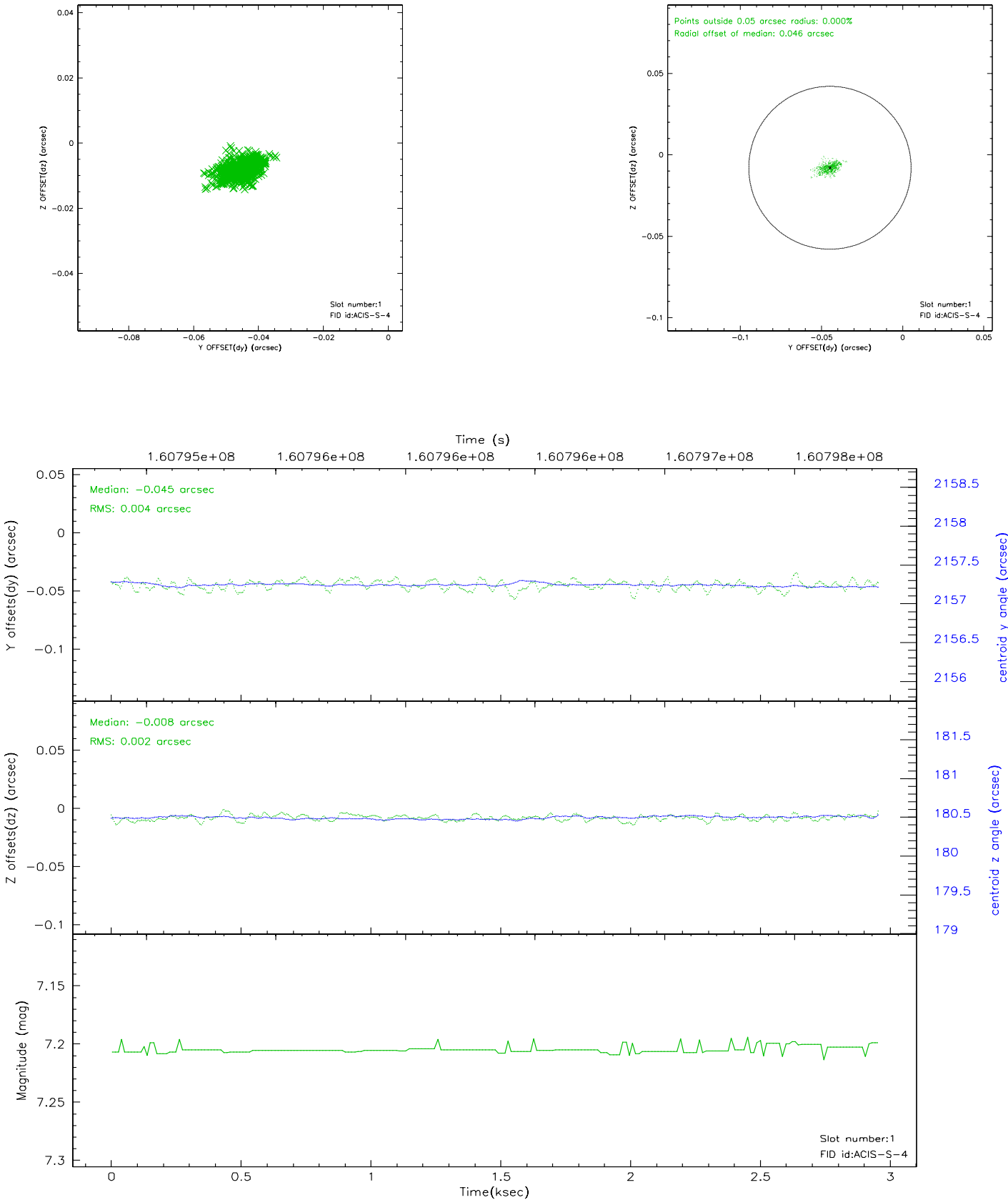


2.5 FID Slots

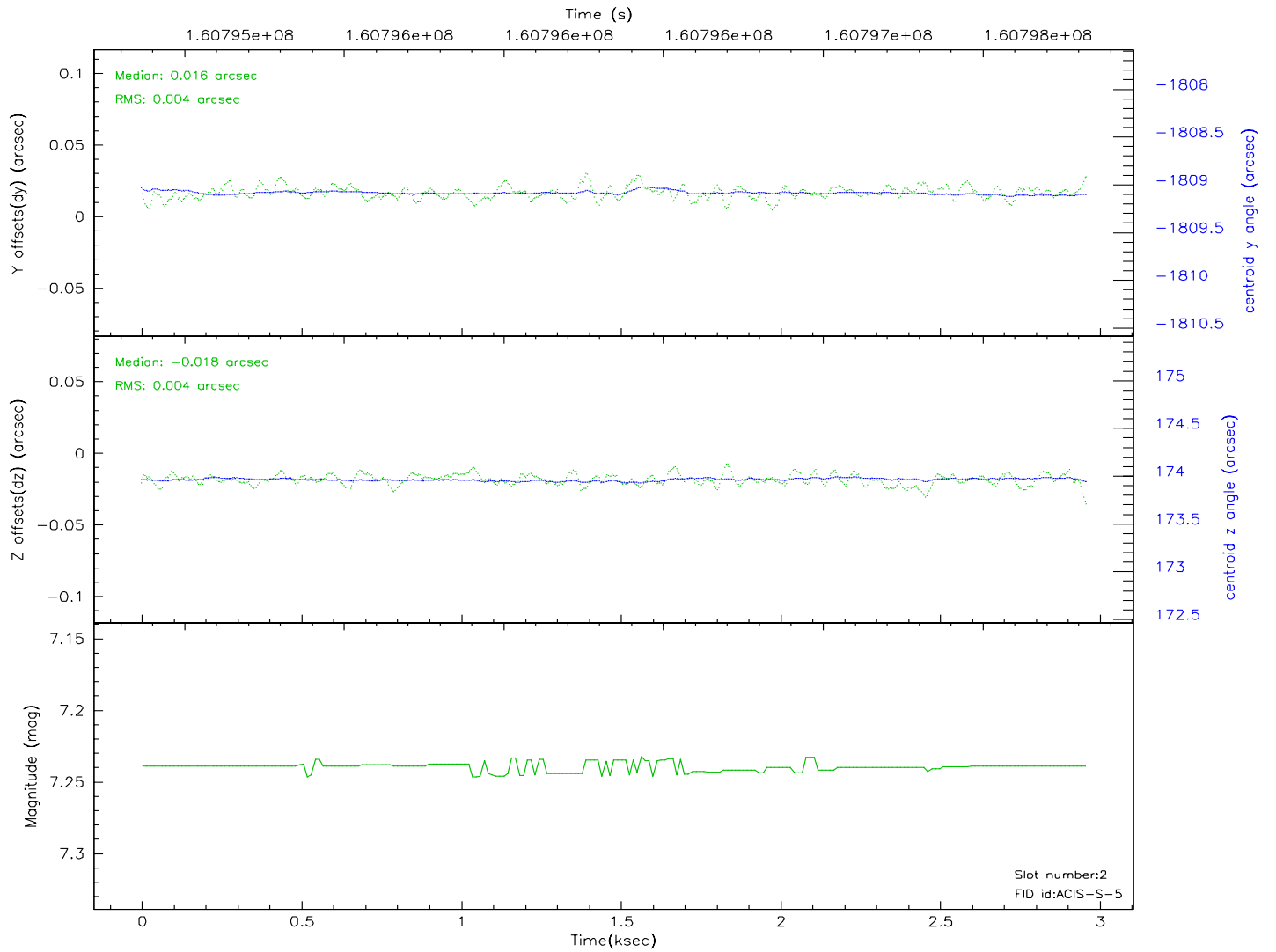
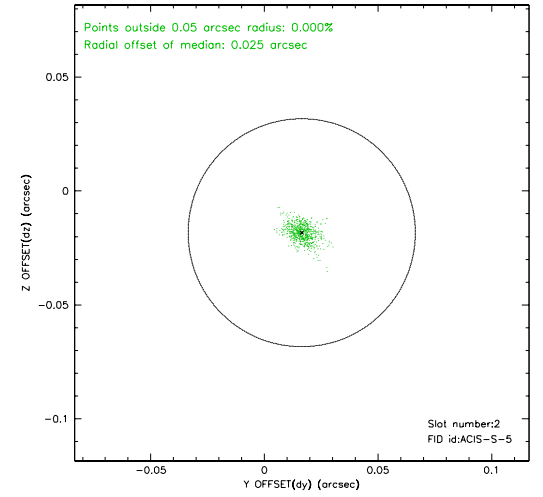
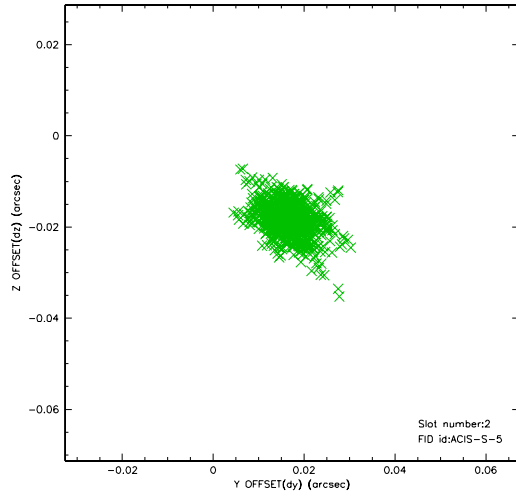
2.5.1 Slot 0



2.5.2 Slot 1



2.5.3 Slot 2



3 Point Sources

4.48 arcmin



A Summary

A.1 Status

V&V Scientist	Beth Sundheim
V&V Date (YYYY-MM-DD)	2006.07.20
V&V Edition	1
V&V Disposition and Status	OK
V&V Charge Time	1.987

A.2 Comments