

V&V Reference Report

L2 ASCDS Version : 7.6.8.1

Observation 4047 - L2 Version 001
Chandra X-Ray Center

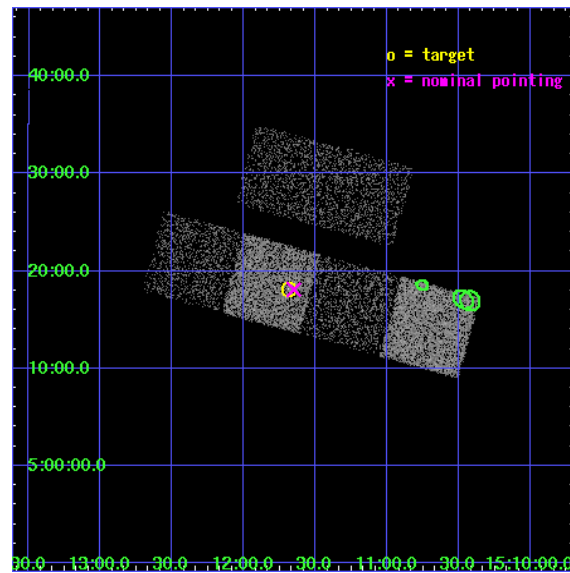
L2 Processing Date : Aug 12 2006

Contents

1	Front	2
2	OBI	3
2.1	OBI	3
2.1.1	Images	3
2.1.2	Bias	3
2.1.3	Parameters	4
2.1.4	Events	4
2.2	Compared Parameters	5
2.3	Aspect	6
2.4	Star Slots	9
2.4.1	Slot 3	9
2.4.2	Slot 4	10
2.4.3	Slot 5	11
2.4.4	Slot 6	12
2.4.5	Slot 7	13
2.5	FID Slots	14
2.5.1	Slot 0	14
2.5.2	Slot 1	15
2.5.3	Slot 2	16
3	Point Sources	17
A	Summary	18
A.1	Status	18
A.2	Comments	18

1 Front

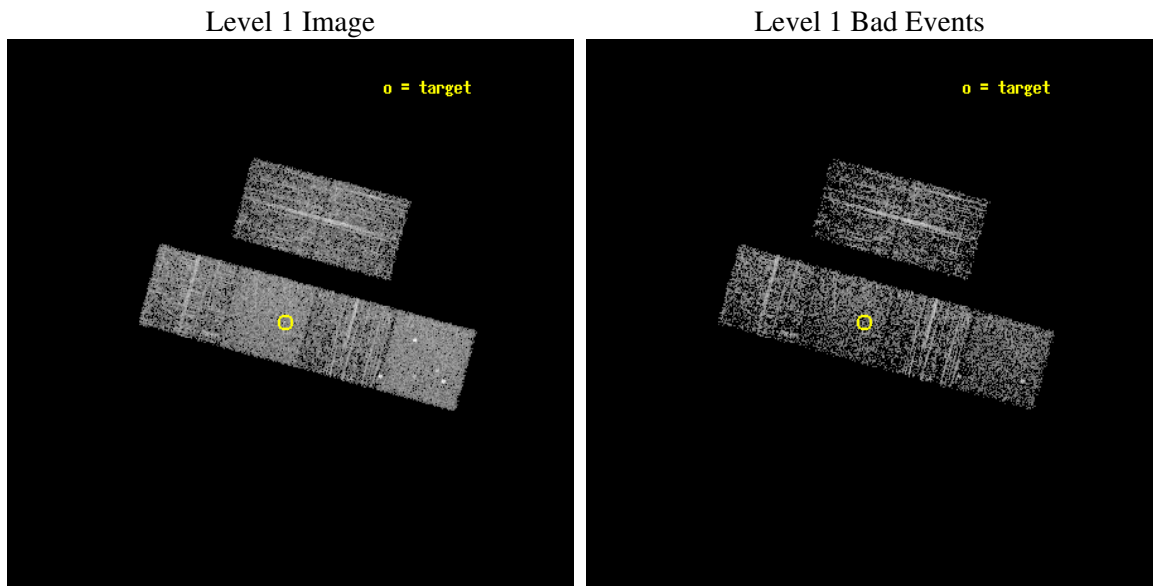
seq_num	700726
obs_id	4047
title	WHY DO WE SEE BROAD LINES IN X-RAY ABSORBED AGN?
observer	Dr. BELINDA WILKES
object	2MASS151141+051810
dtcycle	0
cycle	P
ra_targ	227.922083
dec_targ	5.302639
ra_nom	227.91258043571
dec_nom	5.3018229354565
roll_nom	195.22836388024
revision	3
ontime	2019.1999924779
livetime	1993.6316663569
ontime2	2019.1999924779
ontime3	2019.1999924779
ontime5	2019.1999924779
ontime6	2019.1999924779
ontime7	2019.1999924779
ontime8	2019.1999924779
l2events	19887



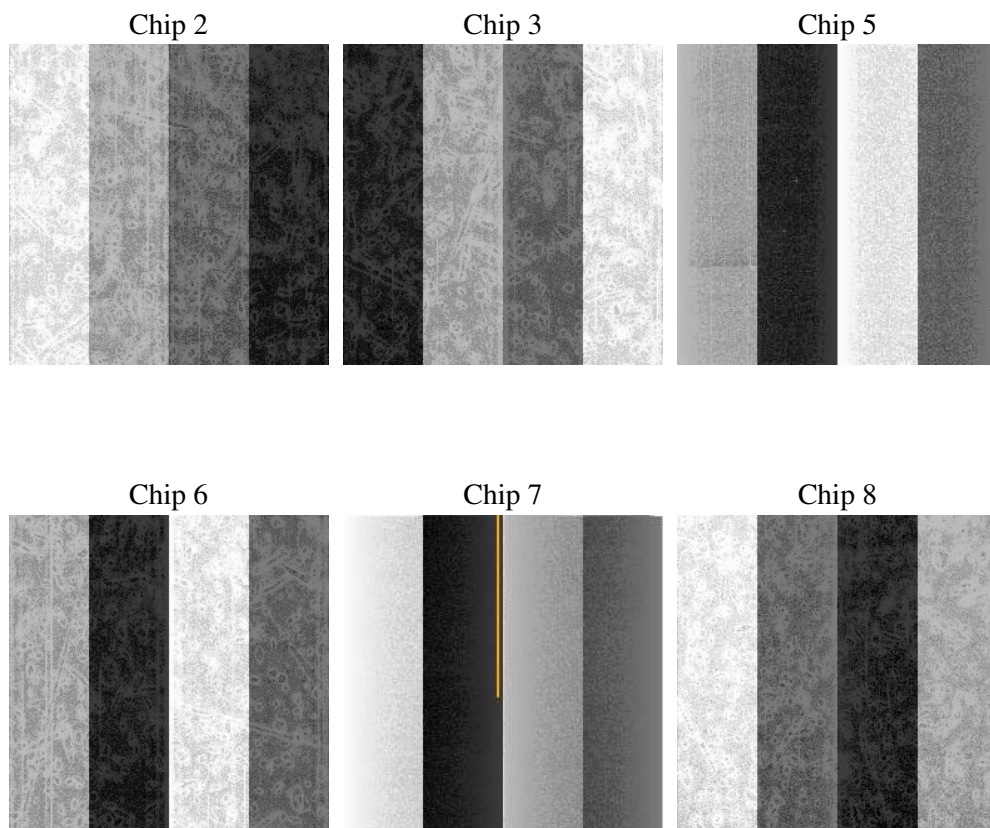
2 OBI

2.1 OBI

2.1.1 Images



2.1.2 Bias



2.1.3 Parameters

obi_num	1
ascdsver	7.6.8.1
caldbver	3.2.3
date	2006-08-12T03:19:49
revision	3

sched_exp_time	2200.000000
ontime	2025.6249359846
ontime2	2025.6249359846
ontime3	2025.6249359846
ontime5	2025.6249359846
ontime6	2025.6249359846
ontime7	2025.6249359846
ontime8	2025.6249359846
l1events	93660

2.1.4 Events

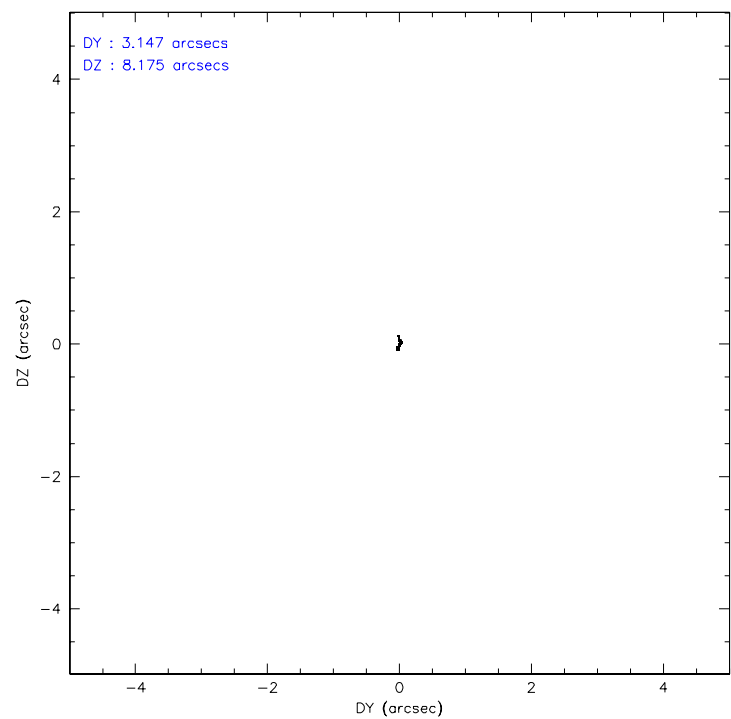
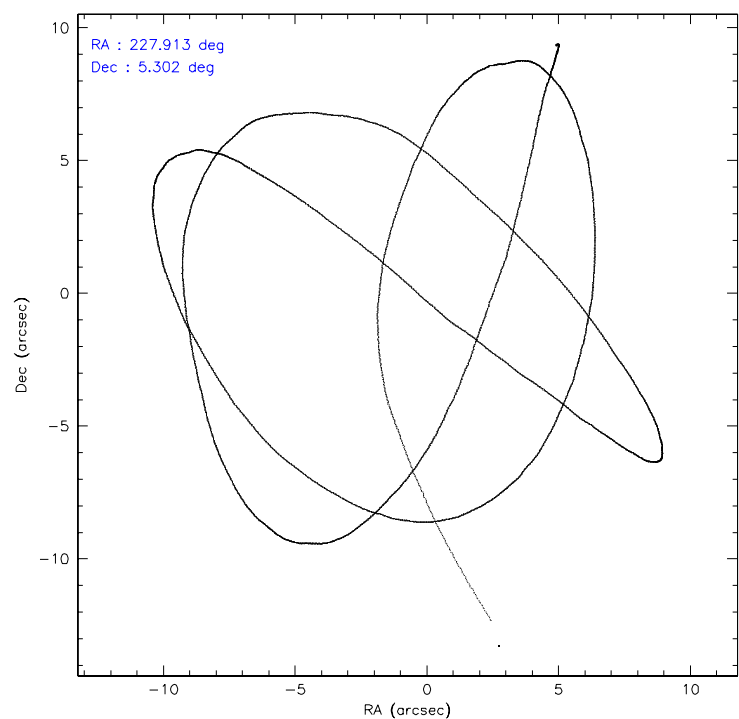
	ccd 2	ccd 3	ccd 5	ccd 6	ccd 7	ccd 8
level 1 events	14168	12545	19251	14453	17365	15878
rejected events	12520	11048	10269	12637	10874	12663
rejected %	88%	88%	53%	87%	62%	79%

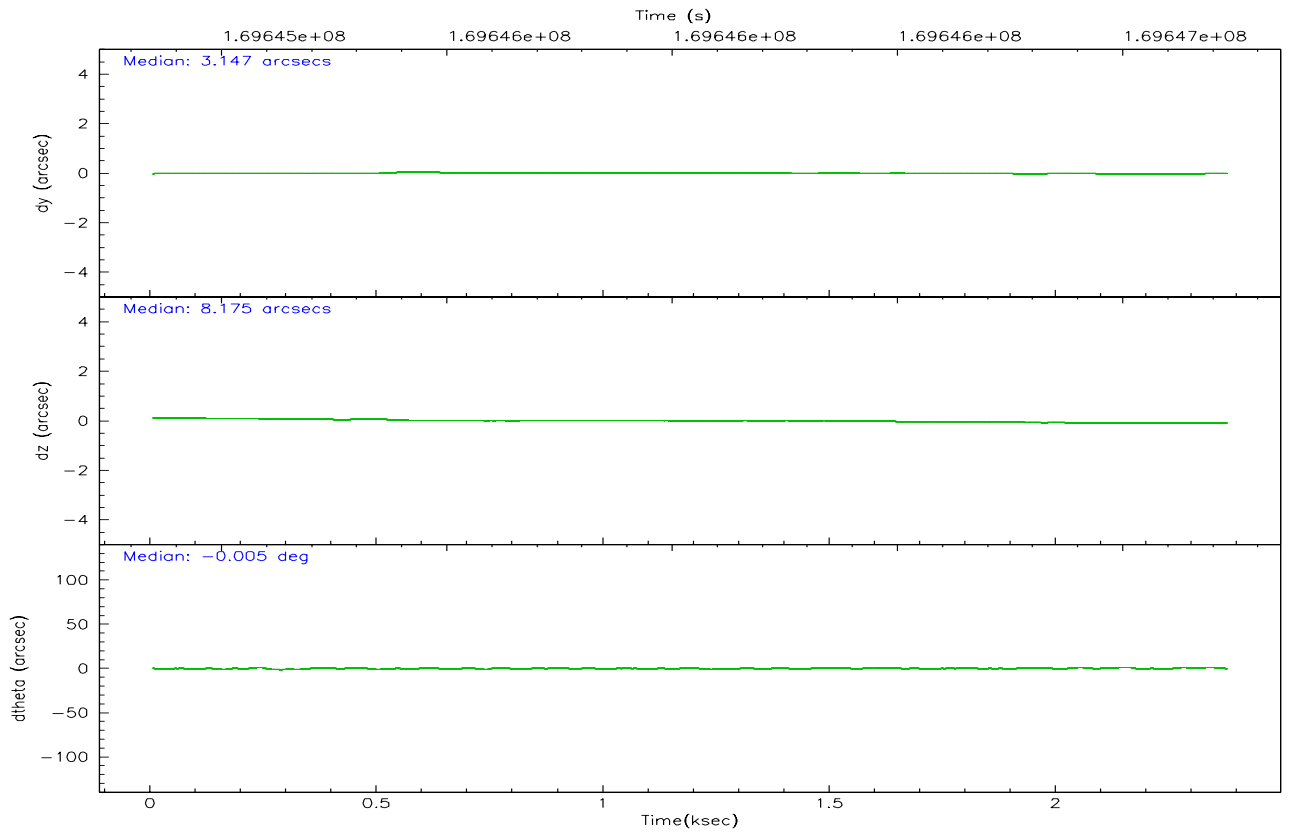
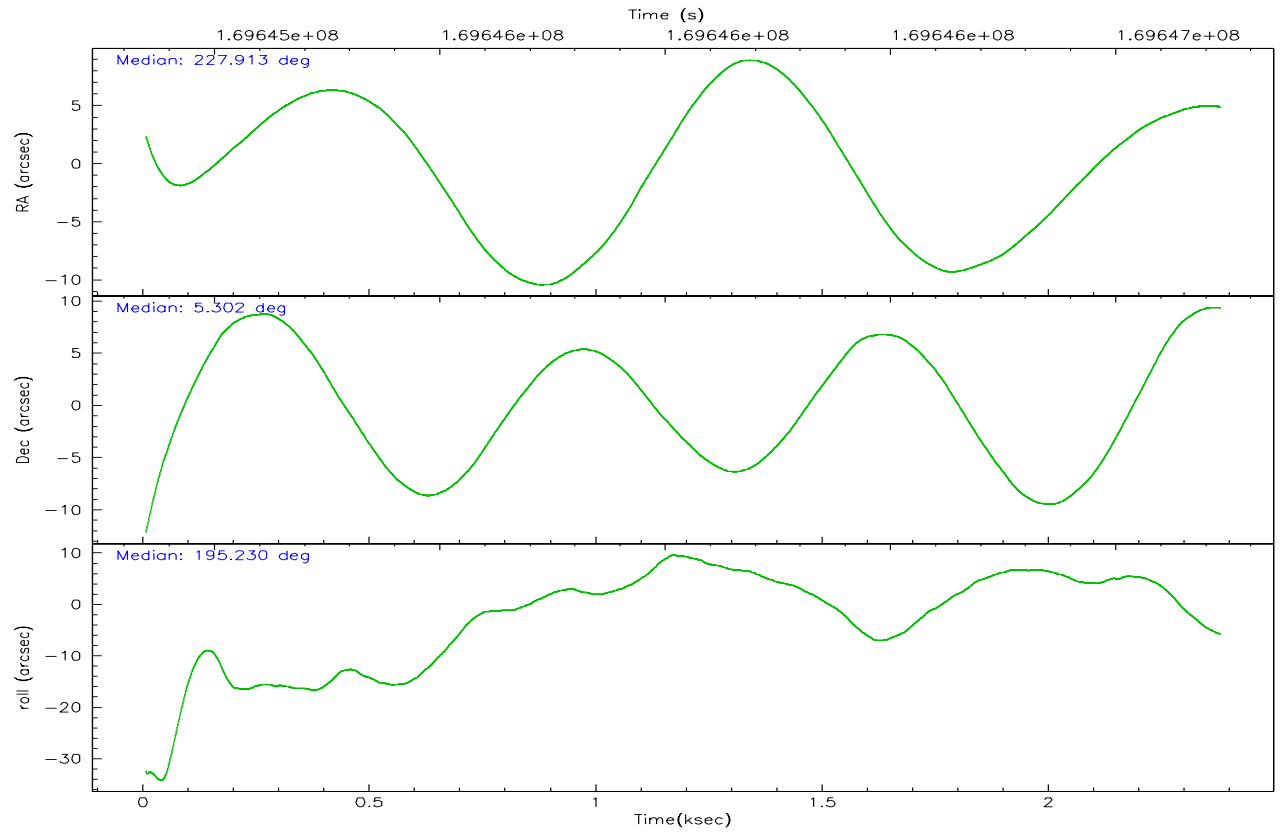
	ccd 2	ccd 3	ccd 5	ccd 6	ccd 7	ccd 8
grade 0 events	761	686	1157	849	473	994
	5%	5%	6%	5%	2%	6%
grade 1 events	7	11	45	6	7	12
	0%	0%	0%	0%	0%	0%
grade 2 events	322	286	2759	338	1555	746
	2%	2%	14%	2%	8%	4%
grade 3 events	142	150	224	179	344	349
	1%	1%	1%	1%	1%	2%
grade 4 events	171	148	199	173	371	286
	1%	1%	1%	1%	2%	1%
grade 5 events	478	530	1018	559	1103	692
	3%	4%	5%	3%	6%	4%
grade 6 events	258	229	4669	282	3782	842
	1%	1%	24%	1%	21%	5%
grade 7 events	12029	10505	9180	12067	9730	11957
	84%	83%	47%	83%	56%	75%

2.2 Compared Parameters

Parameter	Planned	Actual	Parameter	Planned	Actual
Instrument	ACIS	ACIS	Obspar format version number	6	6
Detector	ACIS-235678	ACIS-235678	Obspar file type	PREDICTED	ACTUAL
Grating	NONE	NONE	Obspar update status	NONE	UPDATED
Data mode	FAINT	FAINT	On-chip summing requested	N	N
Observation mode	POINTING	POINTING	Subarray requested	NONE	NONE
Pointing RA	227.931404	227.9125804357073	Alternating exposures requested	N	N
Pointing Dec	5.321366	5.301822935456453	Primary exposure time	0.000000	3.2
Pointing Roll	195.070063	195.2283638802437			
SIM focus pos (mm)	-0.684267	-0.6828225247311905			
SIM defocus (mm)	0	0.001444936568705701			
SIM translation stage pos (mm)	-190.132523	-190.1400660498719			
SIM translation stage offset (mm)	0	0.00754346686406393			
Observation start time	169645028.184000	169644004.80471			
Observation start date	2003-05-18T11:36:04	2003-05-18T11:20:04			
Observation end time	169647228.184000	169648084.30488			
Observation end date	2003-05-18T12:12:44	2003-05-18T12:28:04			
Read mode	TIMED	TIMED			

2.3 Aspect



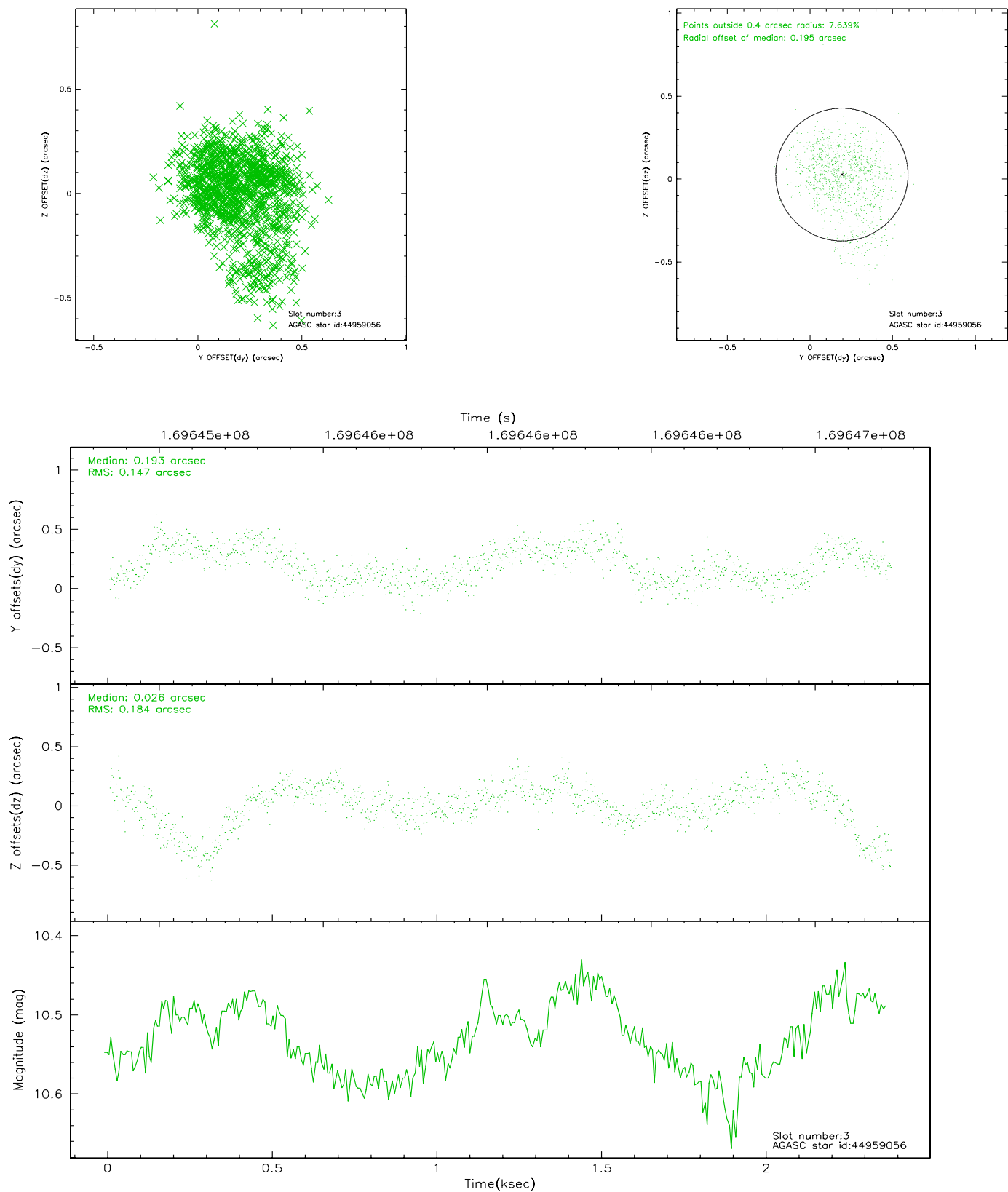


Slot Statistics

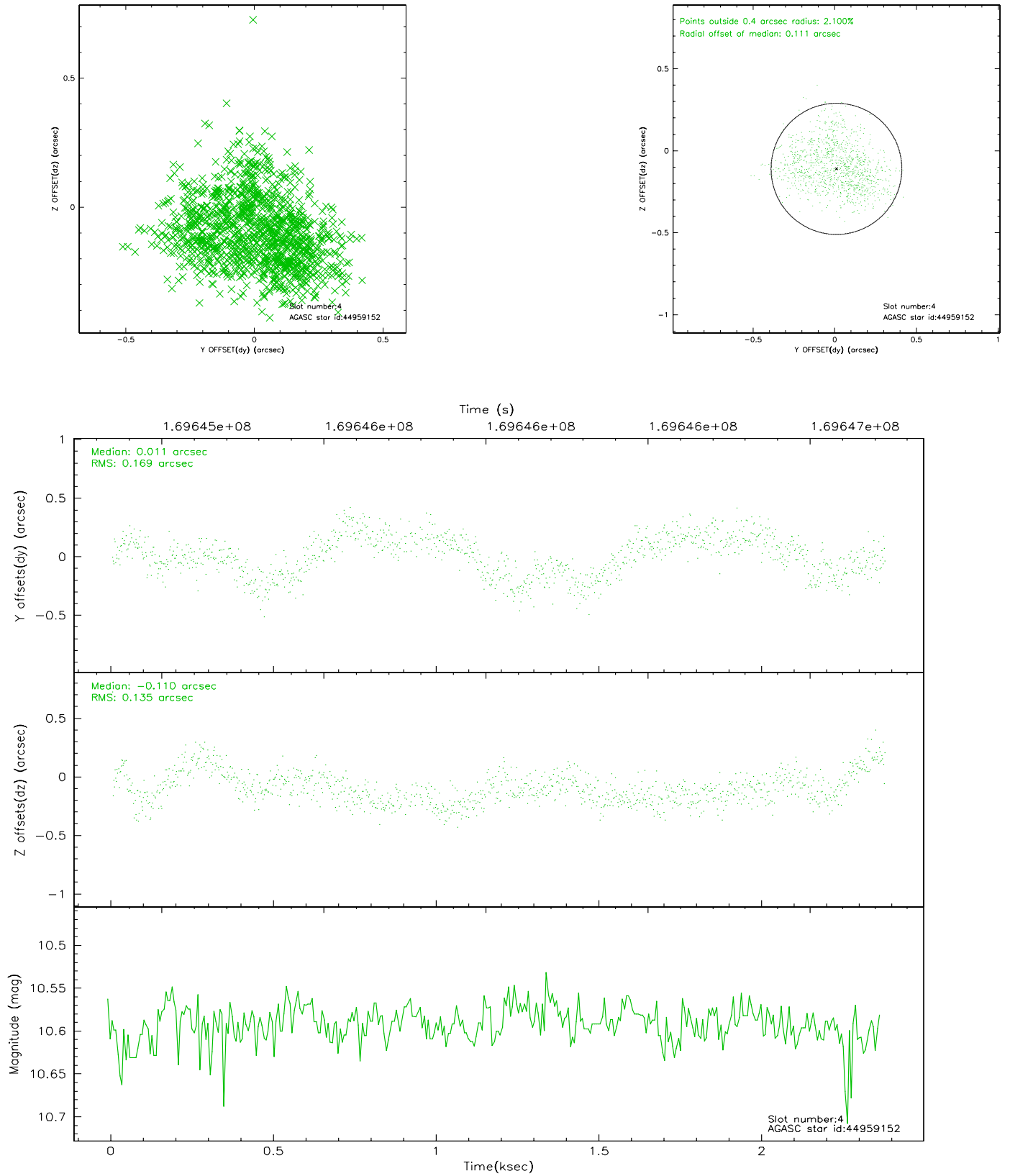
slot	status	id	mag	n_pts	med_dy	med_dz	dr1	dr2	ra	dec	mean_y	mean_z
0	FID	ACIS-S-1	7.19	579	0.017	0.023	0.007	0.012	0.000000	0.000000	940.23	-1724.99
1	FID	ACIS-S-5	7.24	579	-0.004	0.036	0.006	0.010	0.000000	0.000000	-1807.22	169.80
2	FID	ACIS-S-6	7.35	579	-0.034	-0.048	0.007	0.012	0.000000	0.000000	402.83	816.74
3	GUIDE	44959056	10.53	1152	0.193	0.026	0.238	0.439	227.388506	5.331015	1870.80	-540.09
4	GUIDE	44959152	10.59	1143	0.011	-0.110	0.235	0.361	227.413679	5.123161	1980.29	205.13
5	GUIDE	44960448	8.31	1158	-0.065	0.045	0.079	0.128	228.589596	4.993840	-1970.55	1751.51
6	GUIDE	44965328	10.34	1159	-0.023	0.056	0.144	0.242	228.534745	5.246265	-2019.53	824.28
7	GUIDE	44965624	7.27	1158	-0.123	-0.002	0.092	0.145	228.383124	5.044201	-1305.98	1385.17

2.4 Star Slots

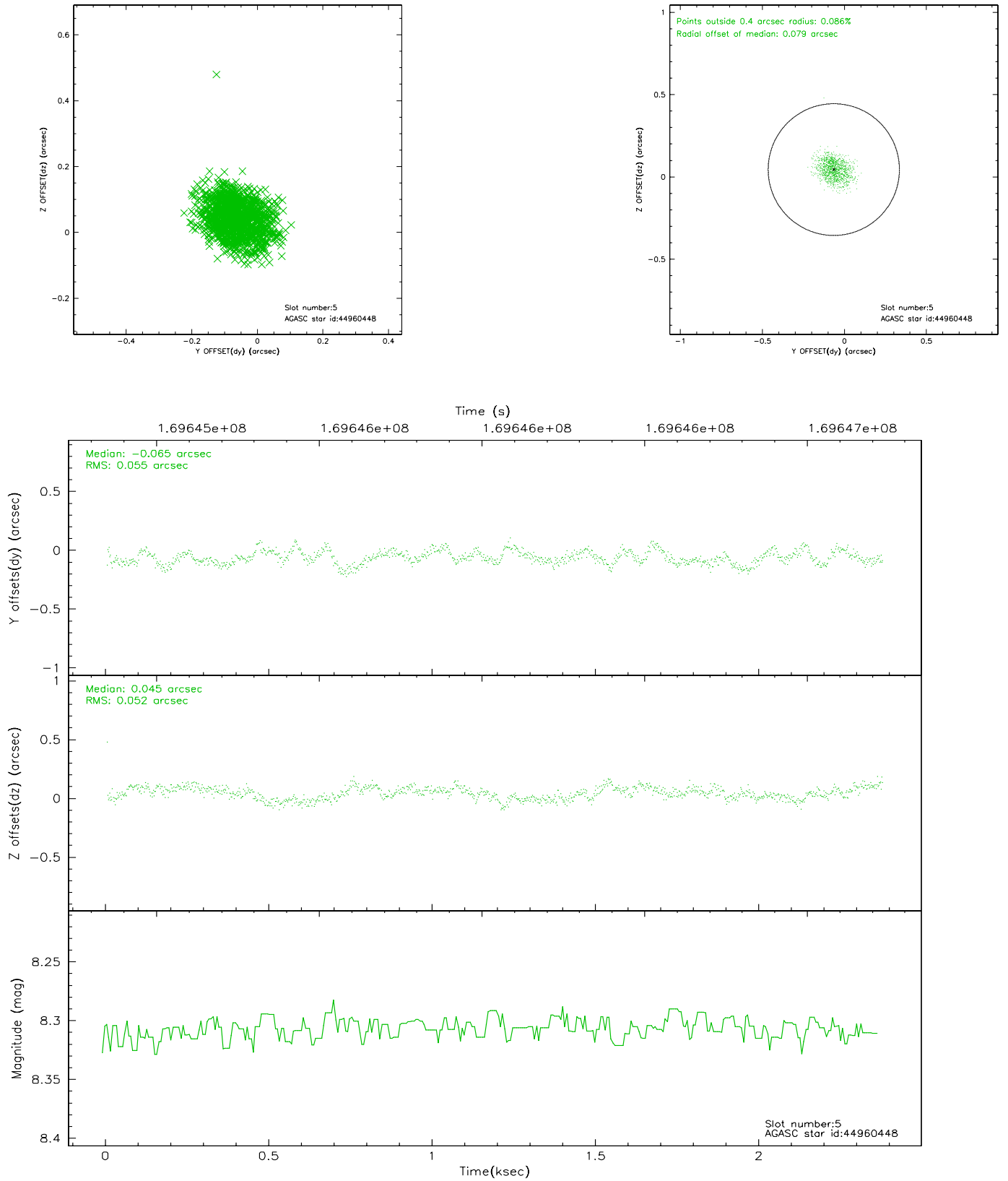
2.4.1 Slot 3



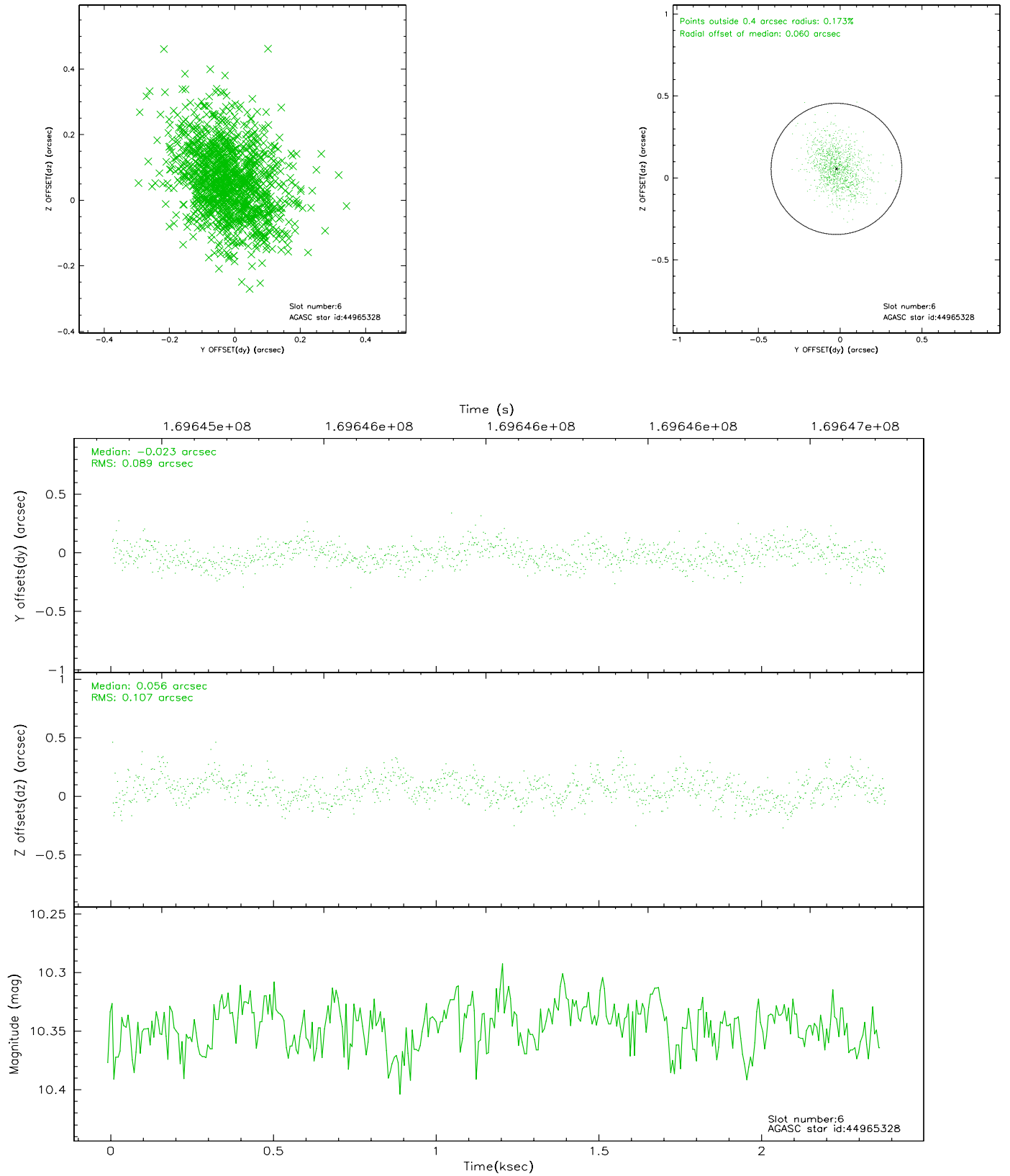
2.4.2 Slot 4



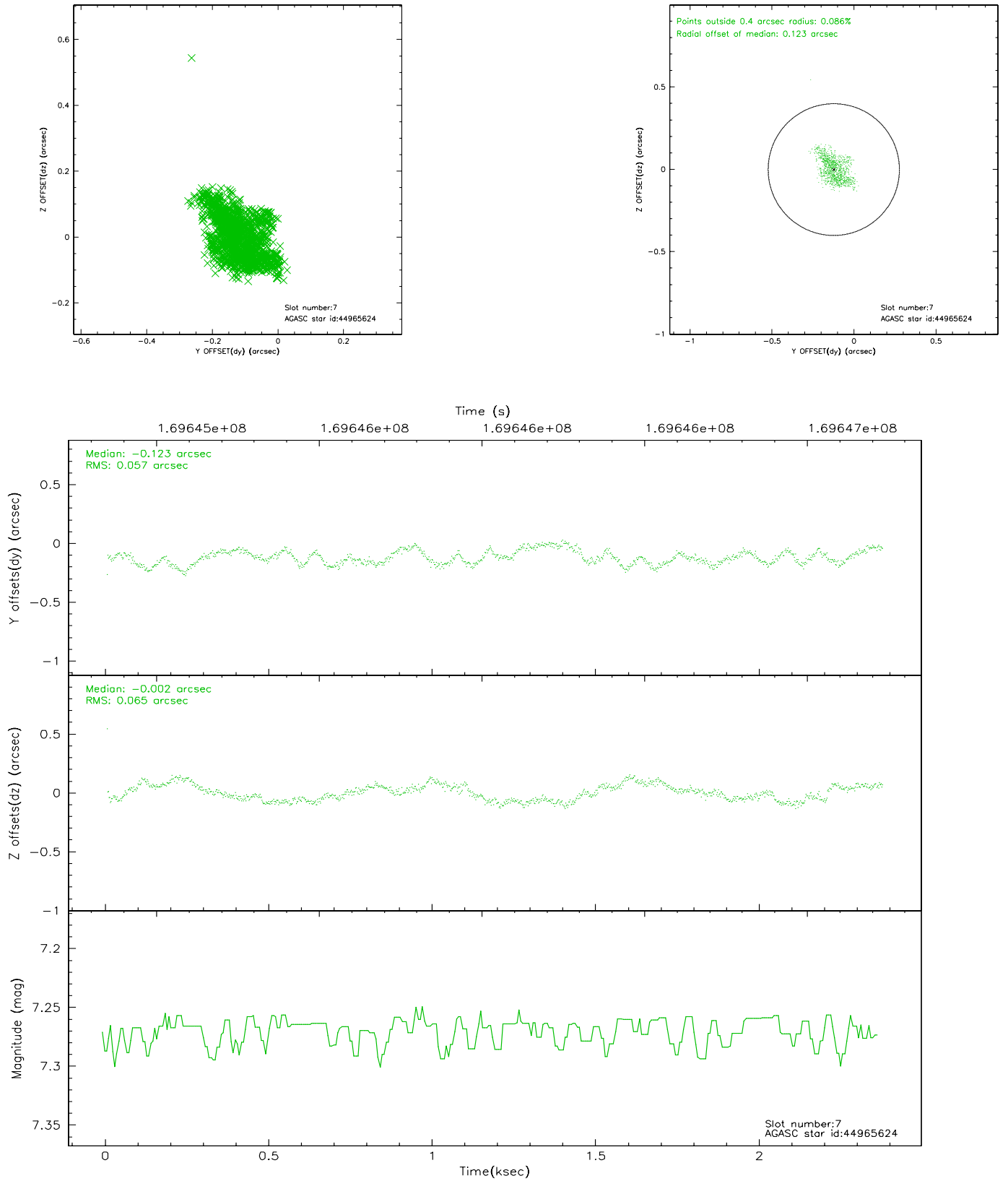
2.4.3 Slot 5



2.4.4 Slot 6

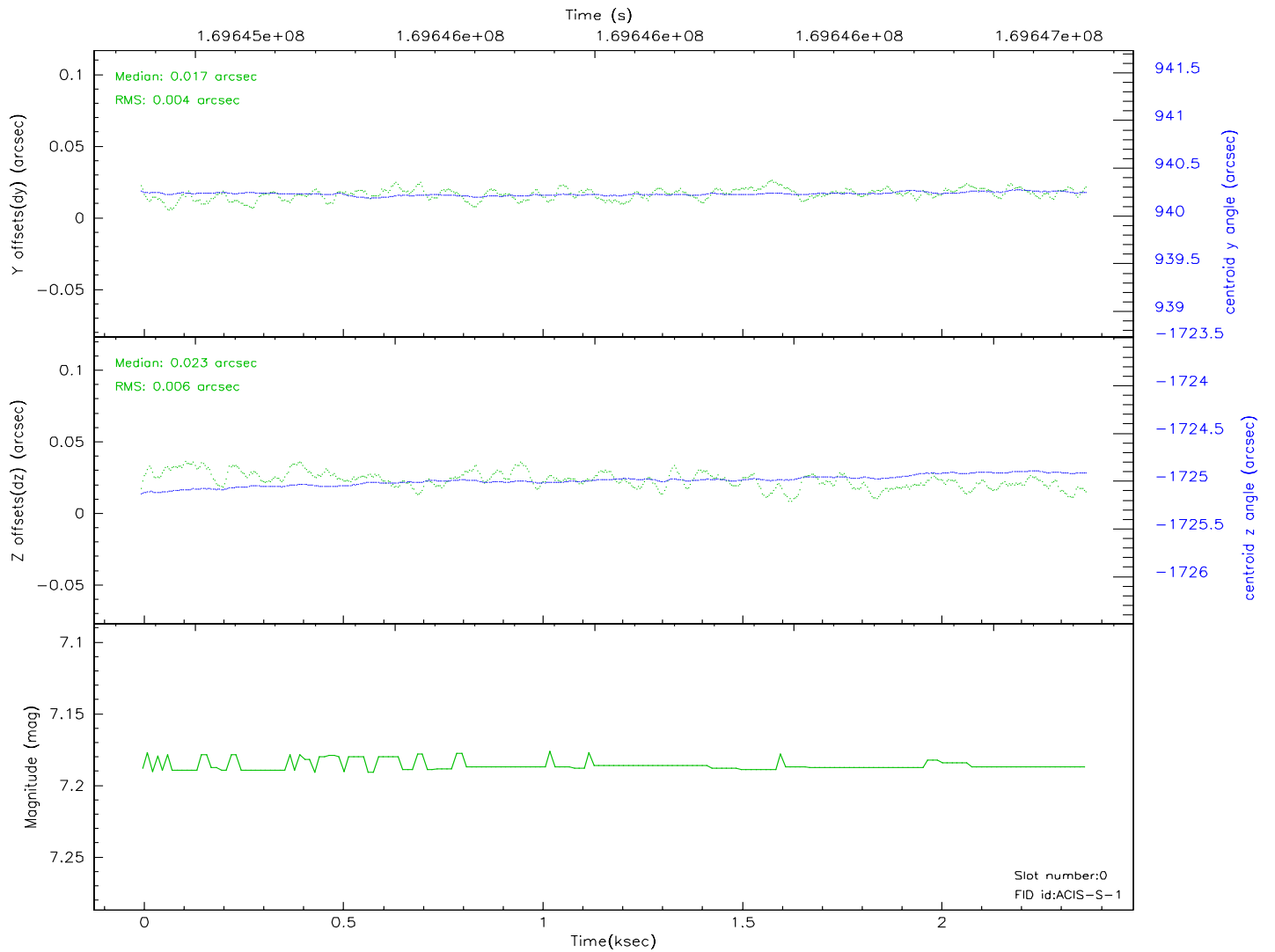
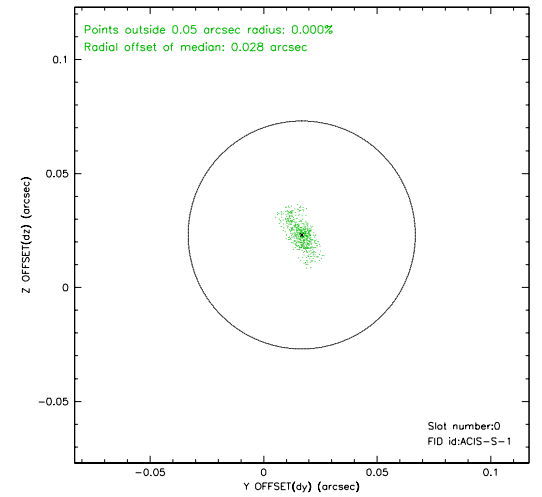
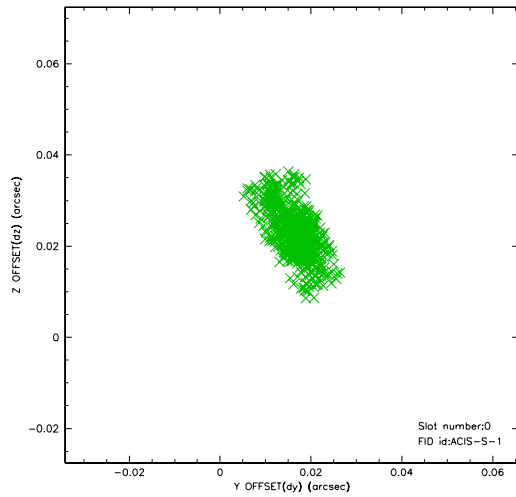


2.4.5 Slot 7

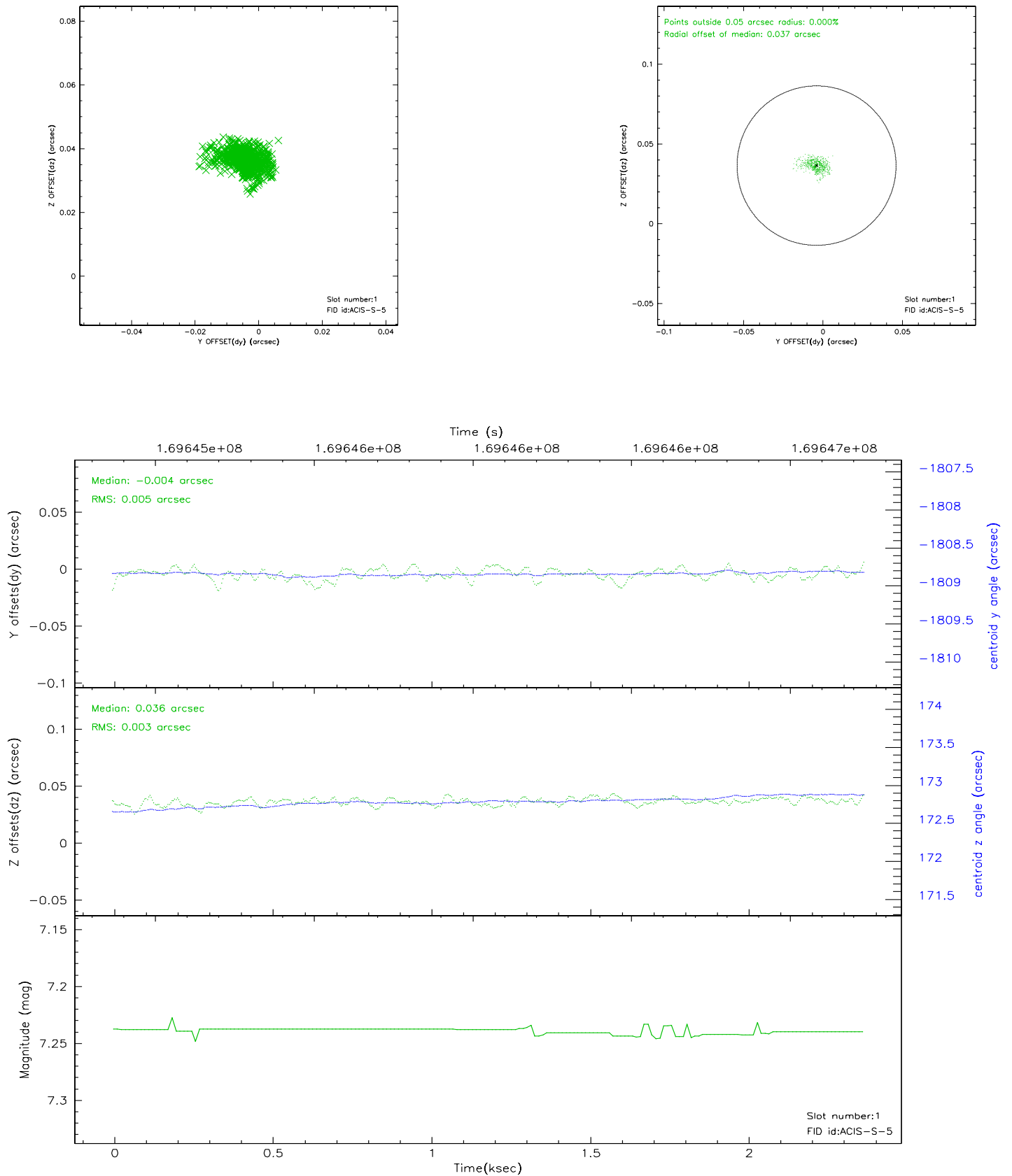


2.5 FID Slots

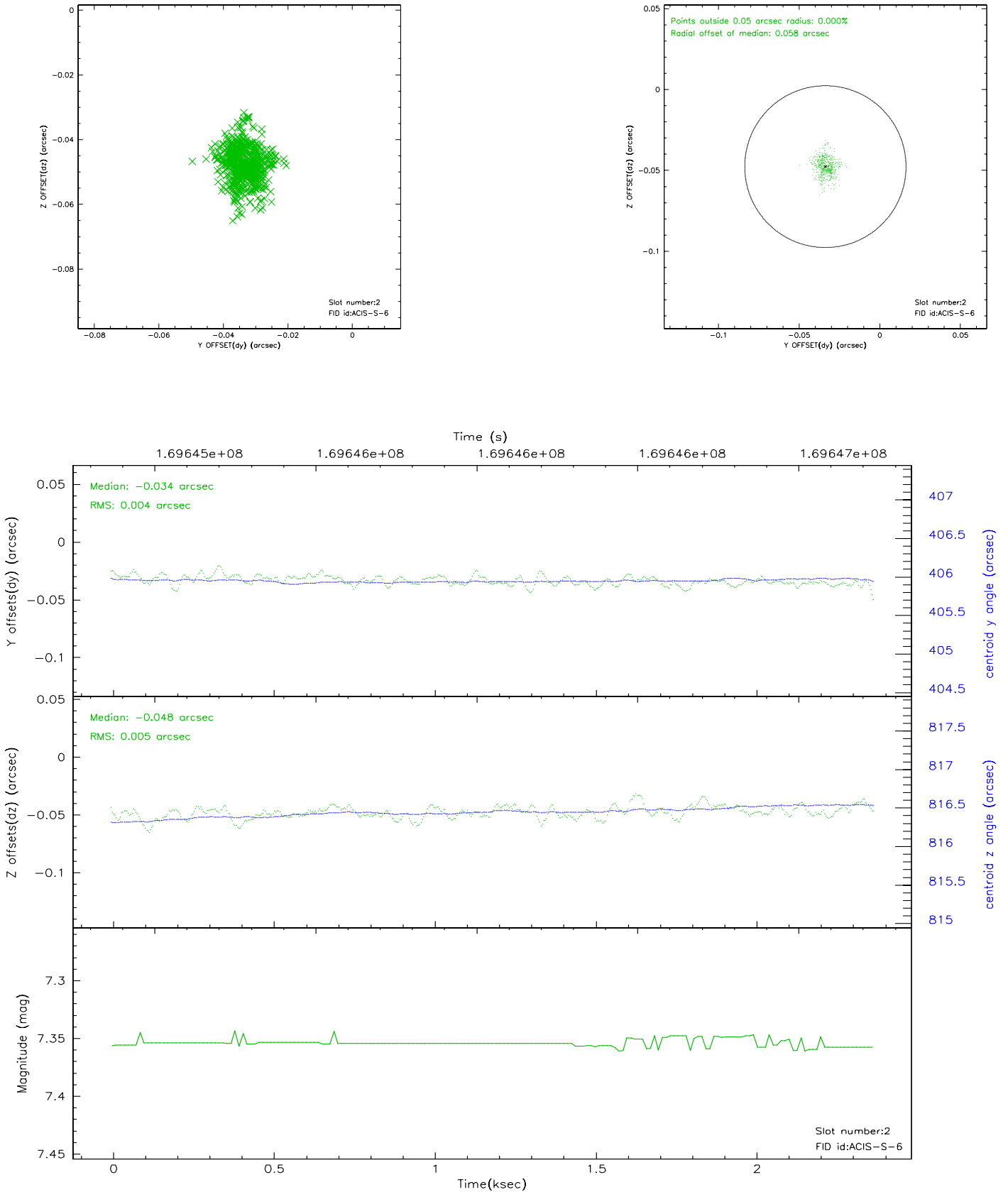
2.5.1 Slot 0



2.5.2 Slot 1



2.5.3 Slot 2



3 Point Sources

A Summary

A.1 Status

V&V Scientist	Jen Lauer
V&V Date (YYYY-MM-DD)	2006.08.13
V&V Edition	1
V&V Disposition and Status	OK
V&V Charge Time	2.022

A.2 Comments