

V&V Reference Report

L2 ASCDS Version : 7.6.8

Observation 4017 - L2 Version 001
Chandra X-Ray Center

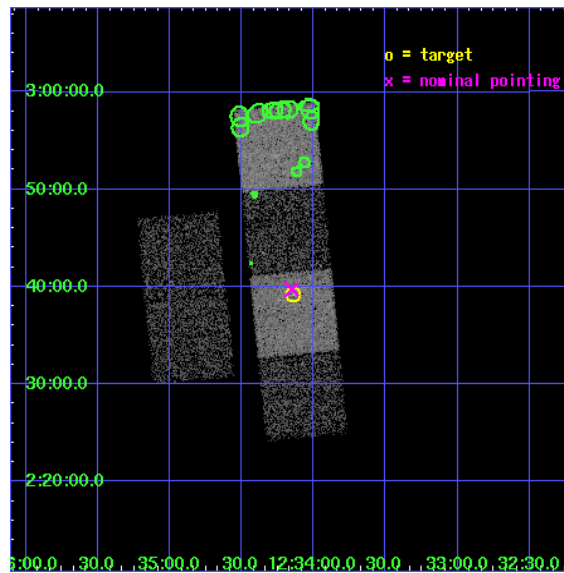
L2 Processing Date : Jul 22 2006

Contents

1	Front	2
2	OBI	3
2.1	OBI	3
2.1.1	Images	3
2.1.2	Bias	3
2.1.3	Parameters	4
2.1.4	Events	4
2.2	Compared Parameters	5
2.3	Aspect	6
2.4	Star Slots	9
2.4.1	Slot 3	9
2.4.2	Slot 4	10
2.4.3	Slot 5	11
2.4.4	Slot 6	12
2.4.5	Slot 7	13
2.5	FID Slots	14
2.5.1	Slot 0	14
2.5.2	Slot 1	15
2.5.3	Slot 2	16
3	Point Sources	17
A	Summary	18
A.1	Status	18
A.2	Comments	18

1 Front

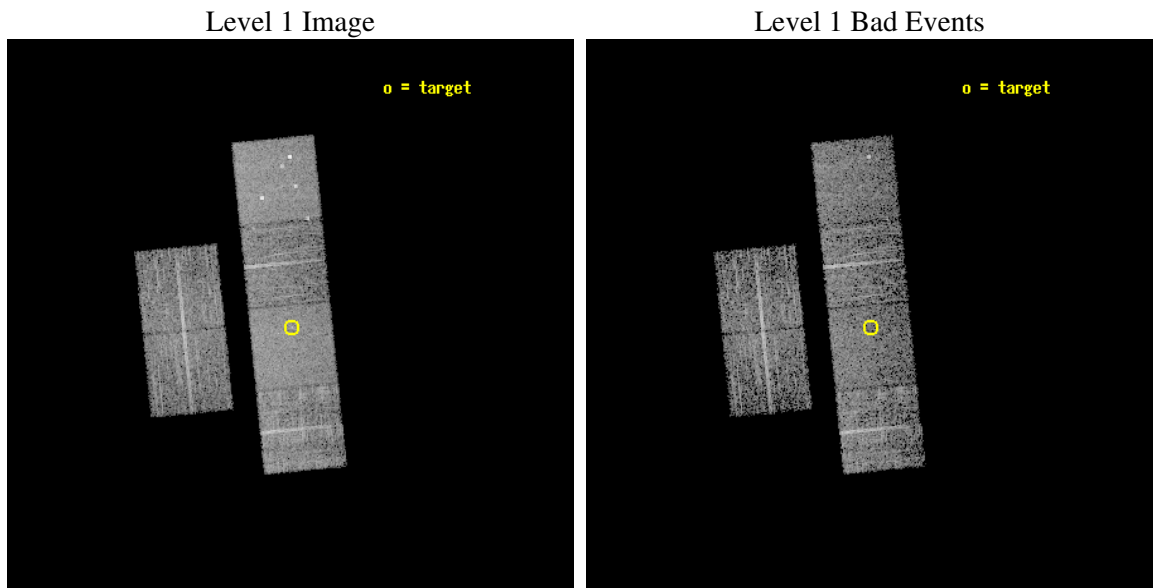
seq_num	700696
obs_id	4017
title	A CHANDRA SURVEY OF INFRARED-BRIGHT LINER GALAXIES
observer	Dr. Shobita Satyapal
object	NGC4527
dtcycle	0
cycle	P
ra_targ	188.535417
dec_targ	2.652778
ra_nom	188.53805281228
dec_nom	2.6621786785232
roll_nom	84.223919112338
revision	4
ontime	4959.9999815226
livetime	4897.1934752031
ontime2	4959.9999815226
ontime3	4959.9999815226
ontime5	4959.9999815226
ontime6	4959.9999815226
ontime7	4959.9999815226
ontime8	4959.9999815226
l2events	48176



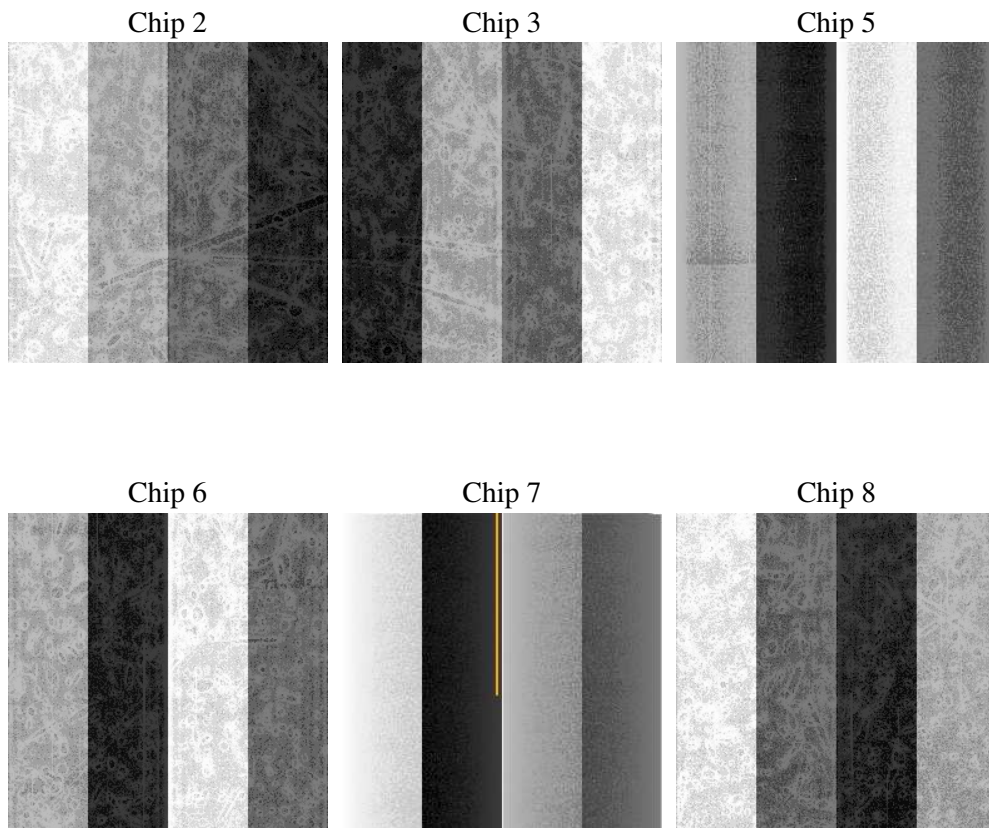
2 OBI

2.1 OBI

2.1.1 Images



2.1.2 Bias



2.1.3 Parameters

obi_num	0
ascdsver	7.6.8
caldsver	3.2.2
date	2006-07-22T17:43:02
revision	4

sched_exp_time	5000.000000
ontime	4965.2212291658
ontime2	4965.2212291658
ontime3	4965.2212291658
ontime5	4965.2212291658
ontime6	4965.2212291658
ontime7	4965.2212291658
ontime8	4965.2212291658
l1events	224934

2.1.4 Events

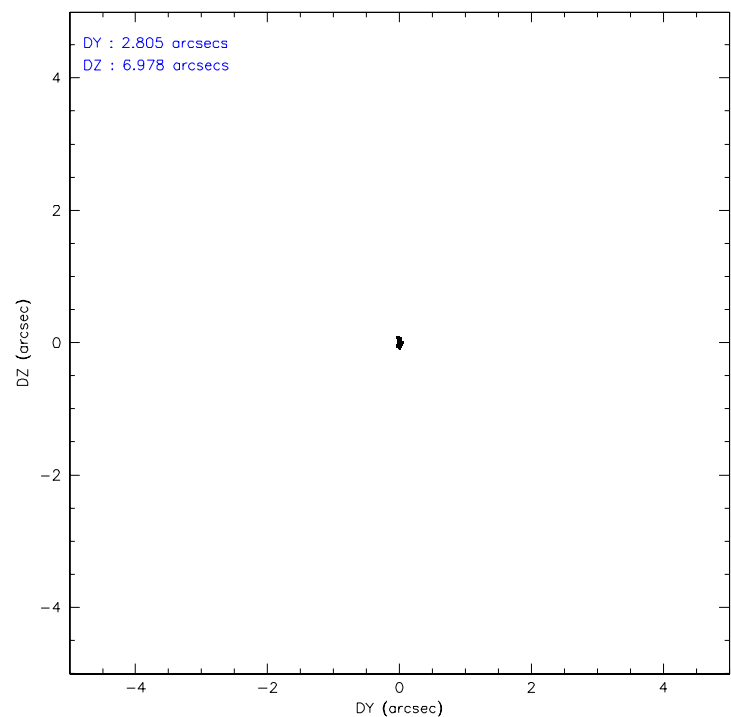
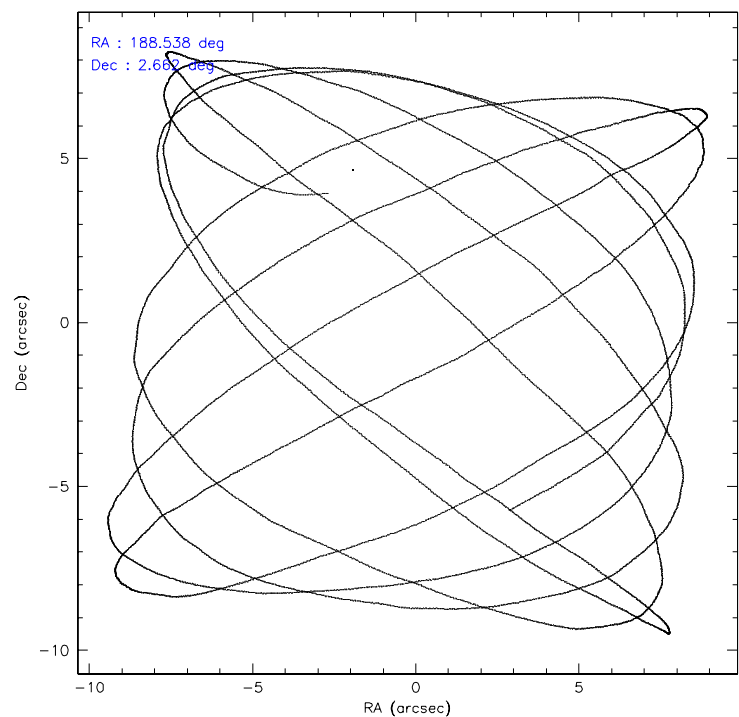
	ccd 2	ccd 3	ccd 5	ccd 6	ccd 7	ccd 8
level 1 events	32592	30441	47774	32295	42323	39509
rejected events	28813	26864	26162	28443	25696	31401
rejected %	88%	88%	54%	88%	60%	79%

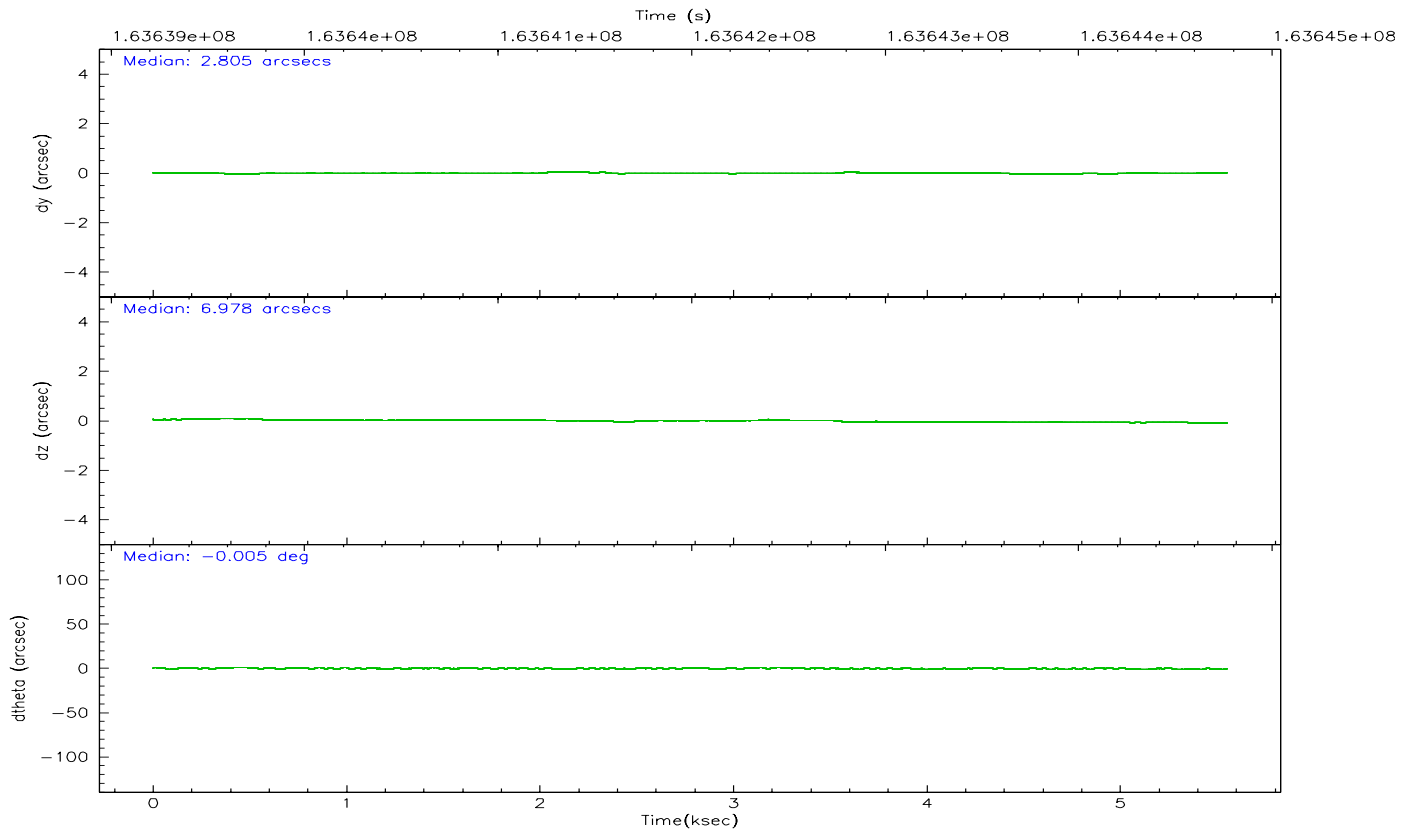
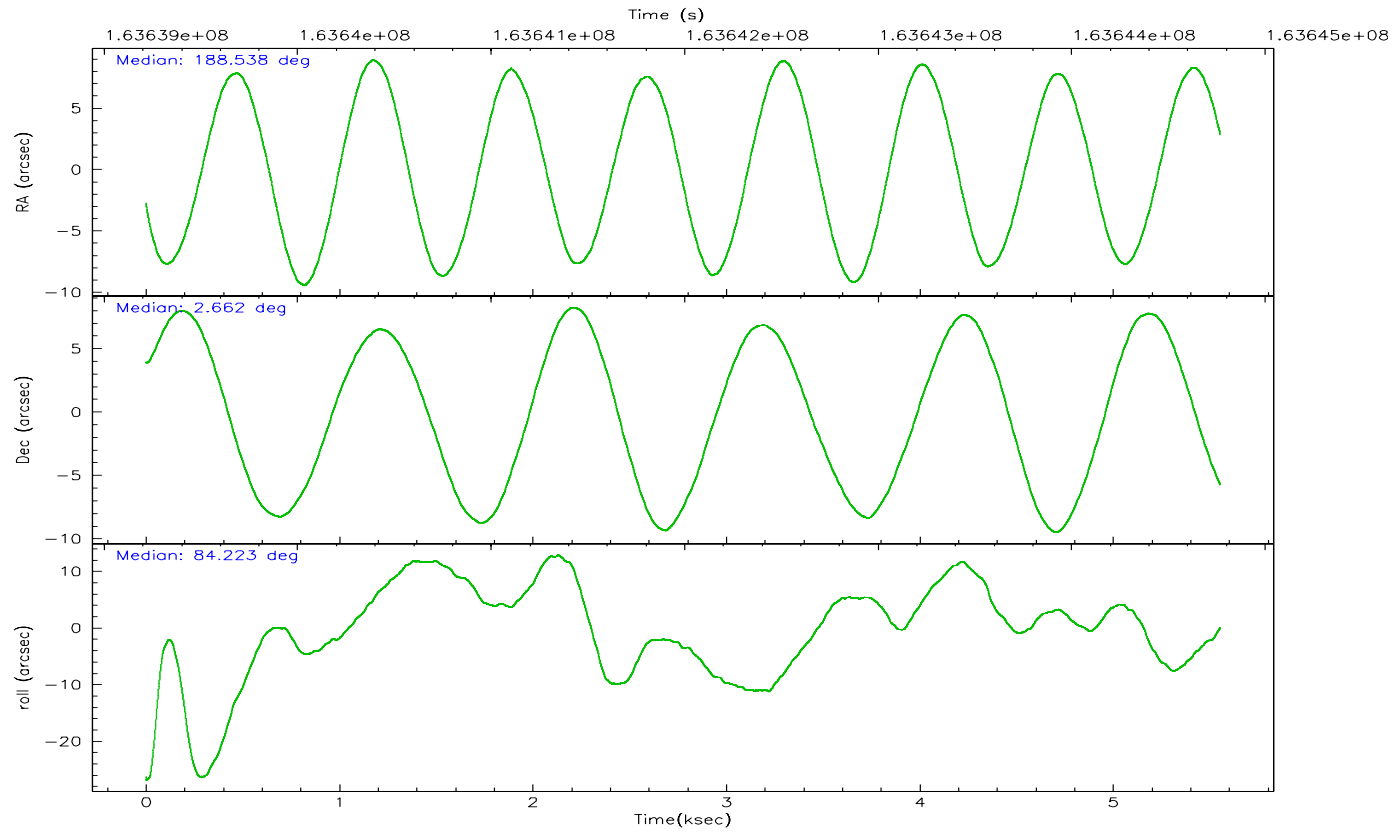
	ccd 2	ccd 3	ccd 5	ccd 6	ccd 7	ccd 8
grade 0 events	1696	1608	2544	1588	1174	2646
	5%	5%	5%	4%	2%	6%
grade 1 events	12	14	73	9	26	22
	0%	0%	0%	0%	0%	0%
grade 2 events	753	650	6705	789	4205	1790
	2%	2%	14%	2%	9%	4%
grade 3 events	377	371	472	361	895	859
	1%	1%	0%	1%	2%	2%
grade 4 events	360	342	444	366	861	826
	1%	1%	0%	1%	2%	2%
grade 5 events	1238	1324	2390	1411	2739	1861
	3%	4%	5%	4%	6%	4%
grade 6 events	595	606	11458	757	9507	1991
	1%	1%	23%	2%	22%	5%
grade 7 events	27561	25526	23688	27014	22916	29514
	84%	83%	49%	83%	54%	74%

2.2 Compared Parameters

Parameter	Planned	Actual	Parameter	Planned	Actual
Instrument	ACIS	ACIS	Obspar format version number	6	6
Detector	ACIS-235678	ACIS-235678	Obspar file type	PREDICTED	ACTUAL
Grating	NONE	NONE	Obspar update status	NONE	UPDATED
Data mode	FAINT	FAINT	On-chip summing requested	N	N
Observation mode	POINTING	POINTING	Subarray requested	NONE	NONE
Pointing RA	188.549584	188.538052812279	Alternating exposures requested	N	N
Pointing Dec	2.637401	2.662178678523248	Primary exposure time	0.000000	3.2
Pointing Roll	84.066755	84.22391911233844			
SIM focus pos (mm)	-0.684267	-0.6828225247311905			
SIM defocus (mm)	0	0.001444936568705701			
SIM translation stage pos (mm)	-190.132523	-190.1400660498719			
SIM translation stage offset (mm)	0	0.00754346686406393			
Observation start time	163639769.184000	163638623.85111			
Observation start date	2003-03-09T23:28:25	2003-03-09T23:10:23			
Observation end time	163644769.184000	163645127.98889			
Observation end date	2003-03-10T00:51:45	2003-03-10T00:58:47			
Read mode	TIMED	TIMED			

2.3 Aspect



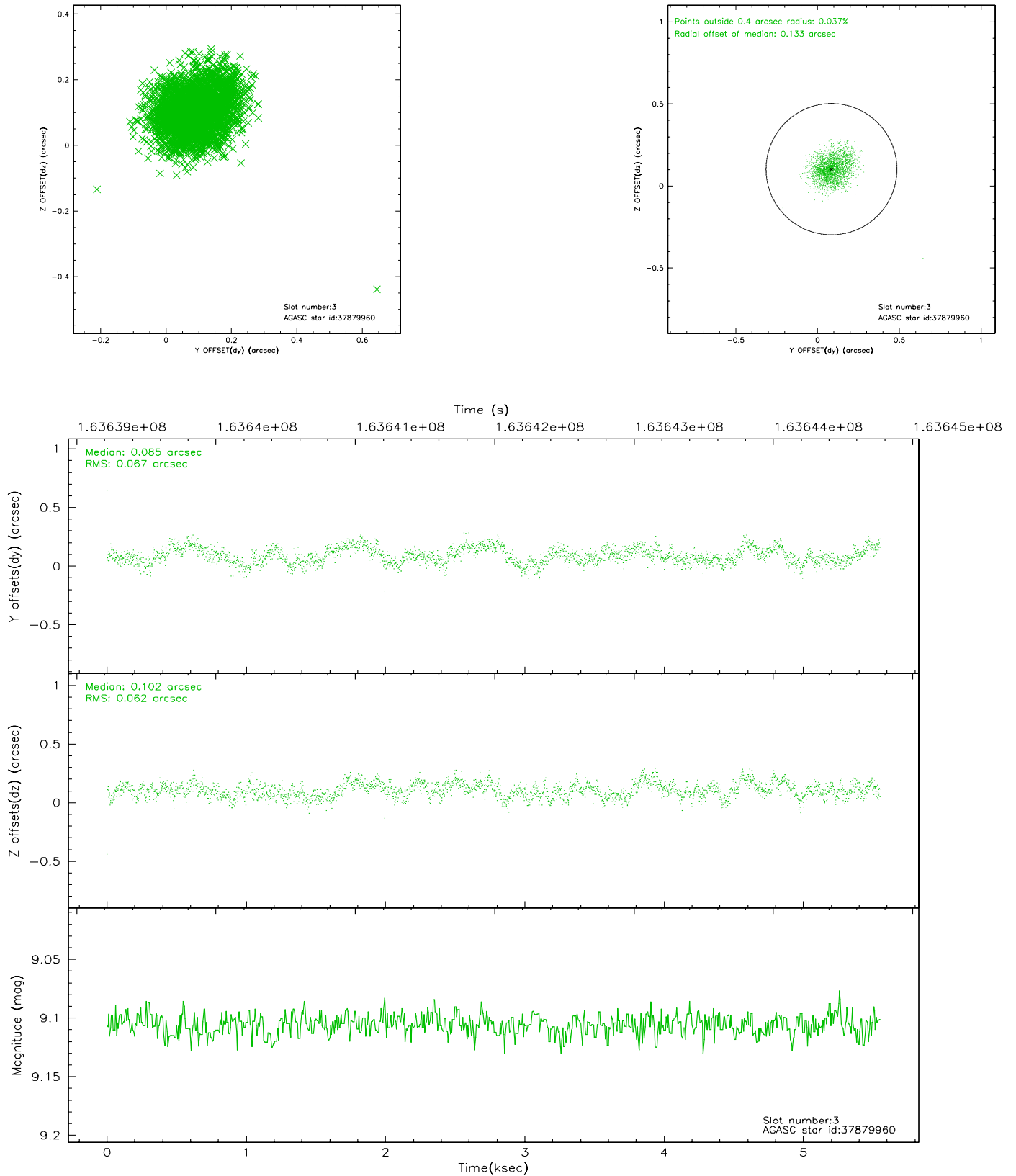


Slot Statistics

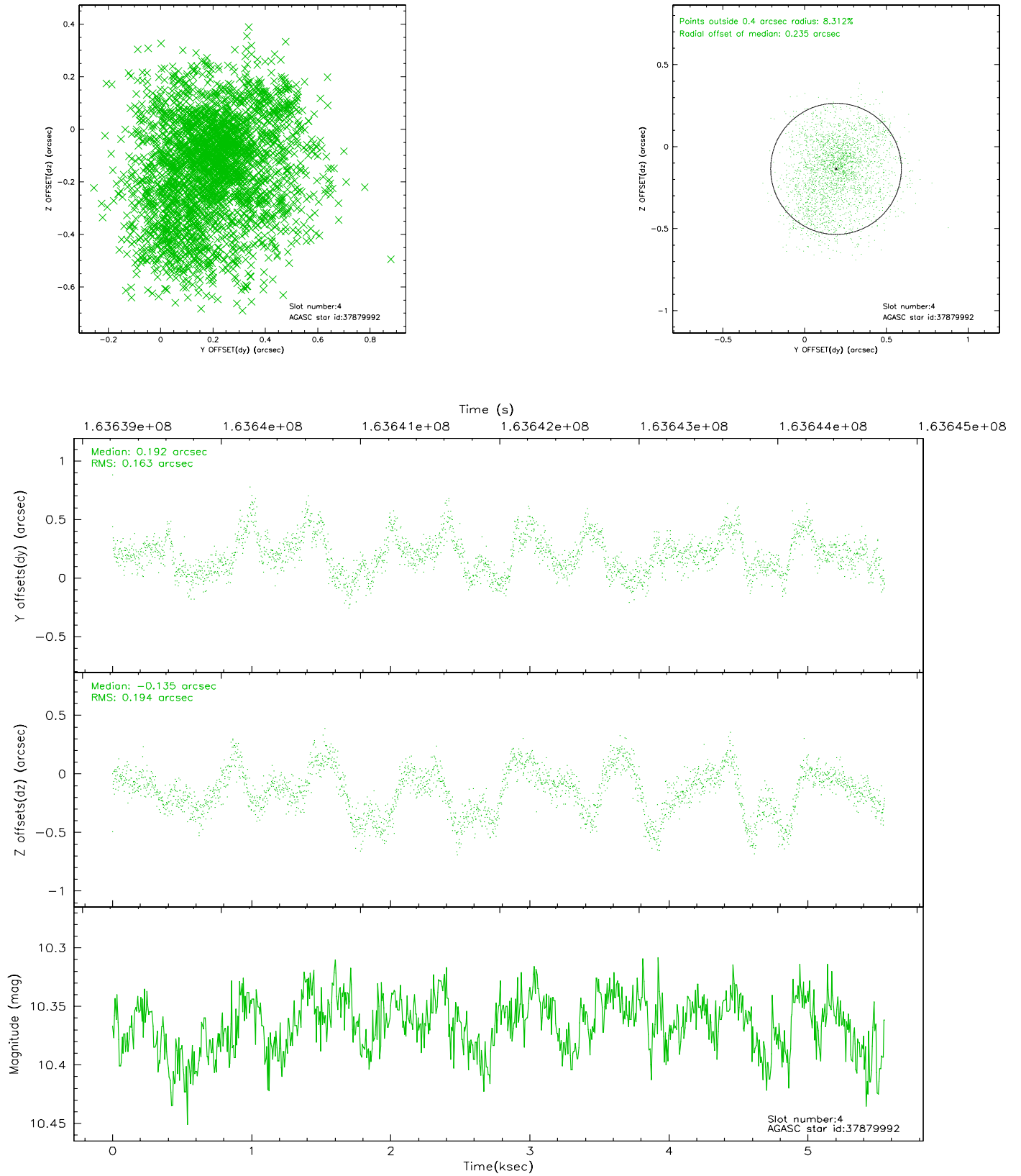
slot	status	id	mag	n_pts	med_dy	med_dz	dr1	dr2	ra	dec	mean_y	mean_z
0	FID	ACIS-S-2	7.11	1355	-0.018	0.022	0.007	0.011	0.000000	0.000000	-755.44	-1728.12
1	FID	ACIS-S-4	7.20	1355	-0.043	0.002	0.005	0.009	0.000000	0.000000	2157.30	179.25
2	FID	ACIS-S-5	7.24	1355	0.030	-0.016	0.006	0.010	0.000000	0.000000	-1806.86	174.10
3	GUIDE	37879960	9.11	2710	0.085	0.102	0.098	0.157	188.579259	2.444508	-680.09	-177.82
4	GUIDE	37879992	10.37	2707	0.192	-0.135	0.281	0.430	188.222608	2.414886	-918.77	1086.75
5	GUIDE	38276672	9.71	2692	-0.030	-0.049	0.138	0.219	188.117492	3.340615	2356.82	1807.26
6	GUIDE	38279336	9.95	2706	-0.189	0.125	0.129	0.208	188.708780	3.261056	2292.50	-336.17
7	GUIDE	38280776	8.81	2708	-0.057	-0.027	0.089	0.139	188.539013	3.077618	1572.65	201.55

2.4 Star Slots

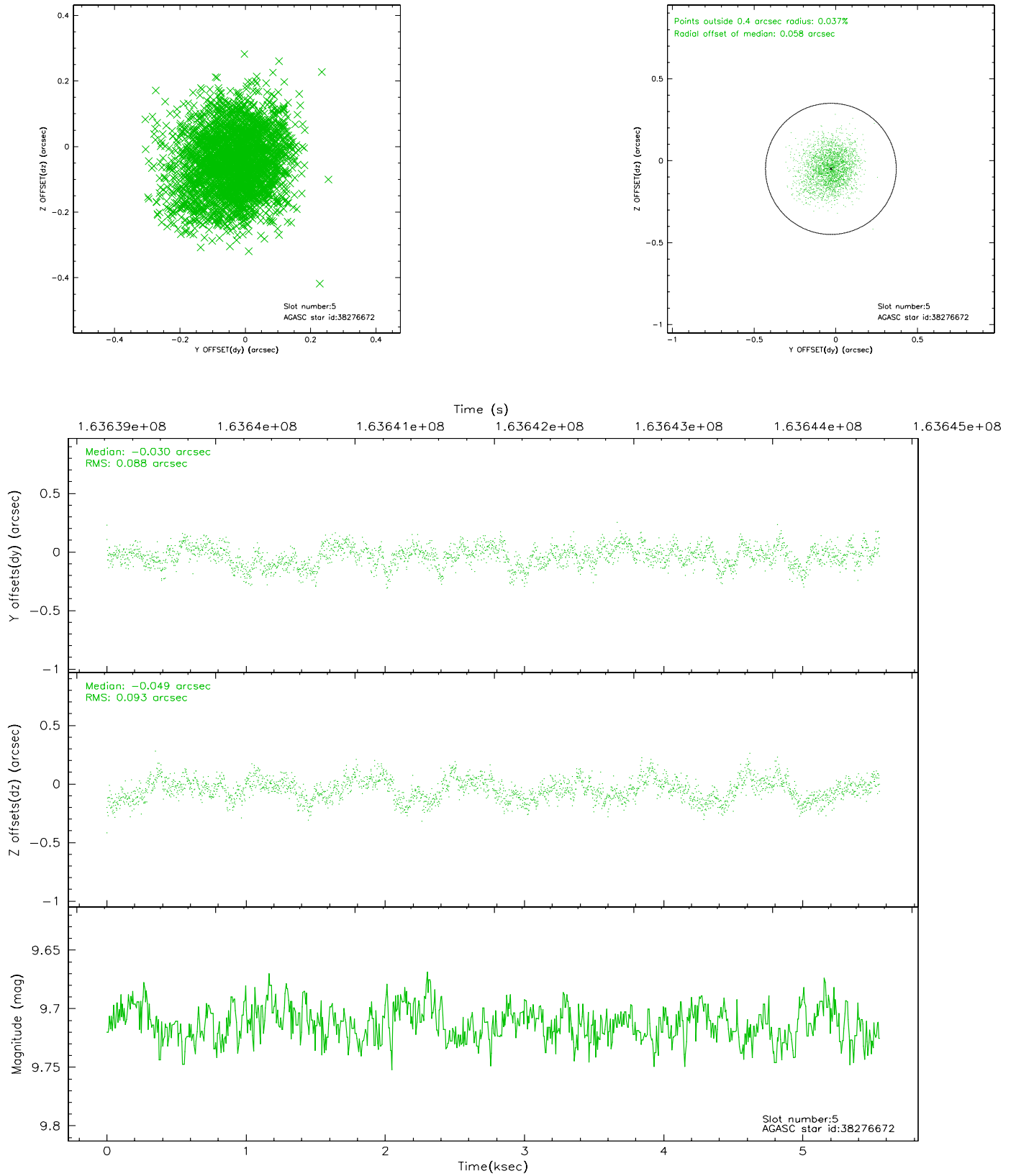
2.4.1 Slot 3



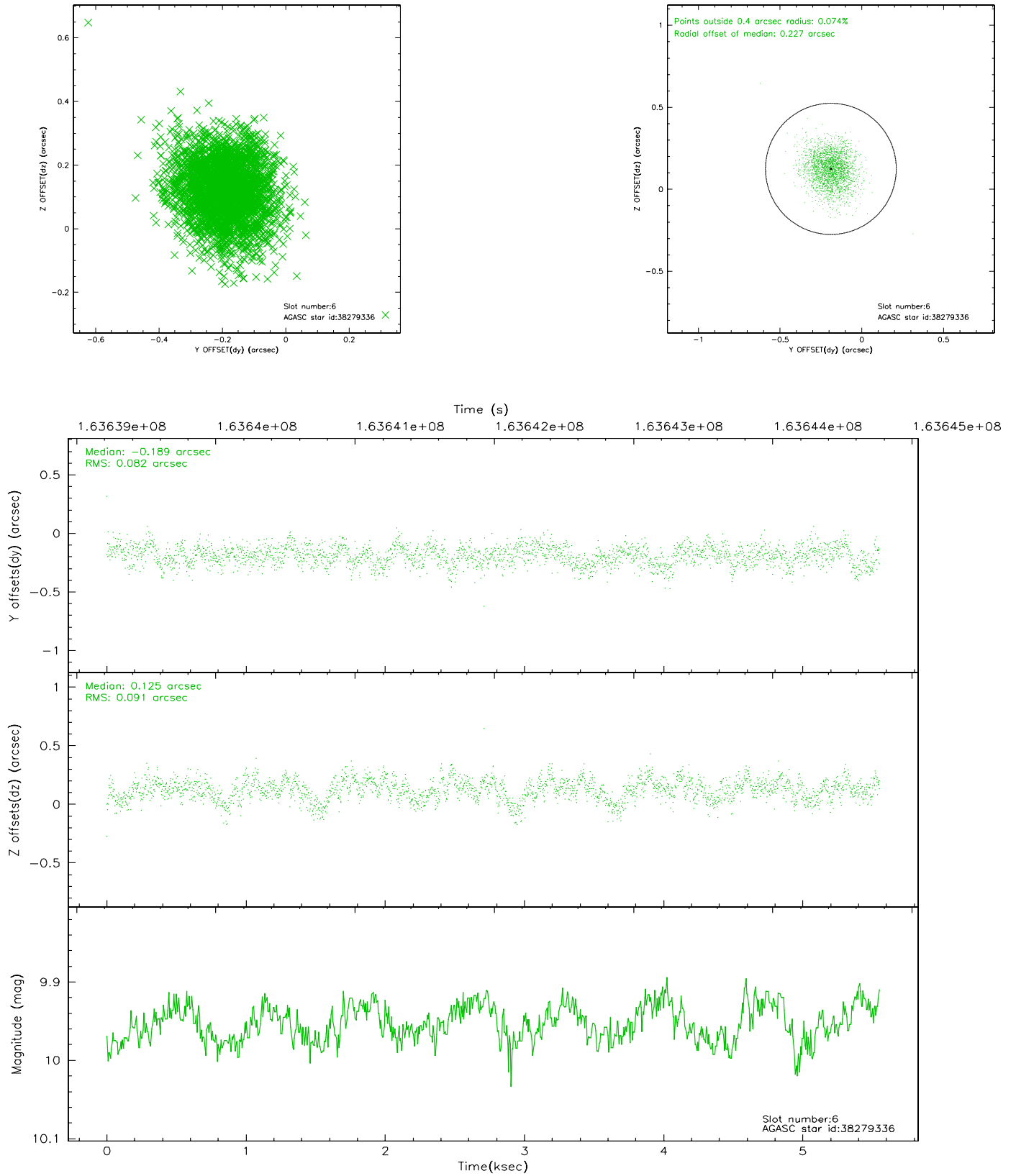
2.4.2 Slot 4



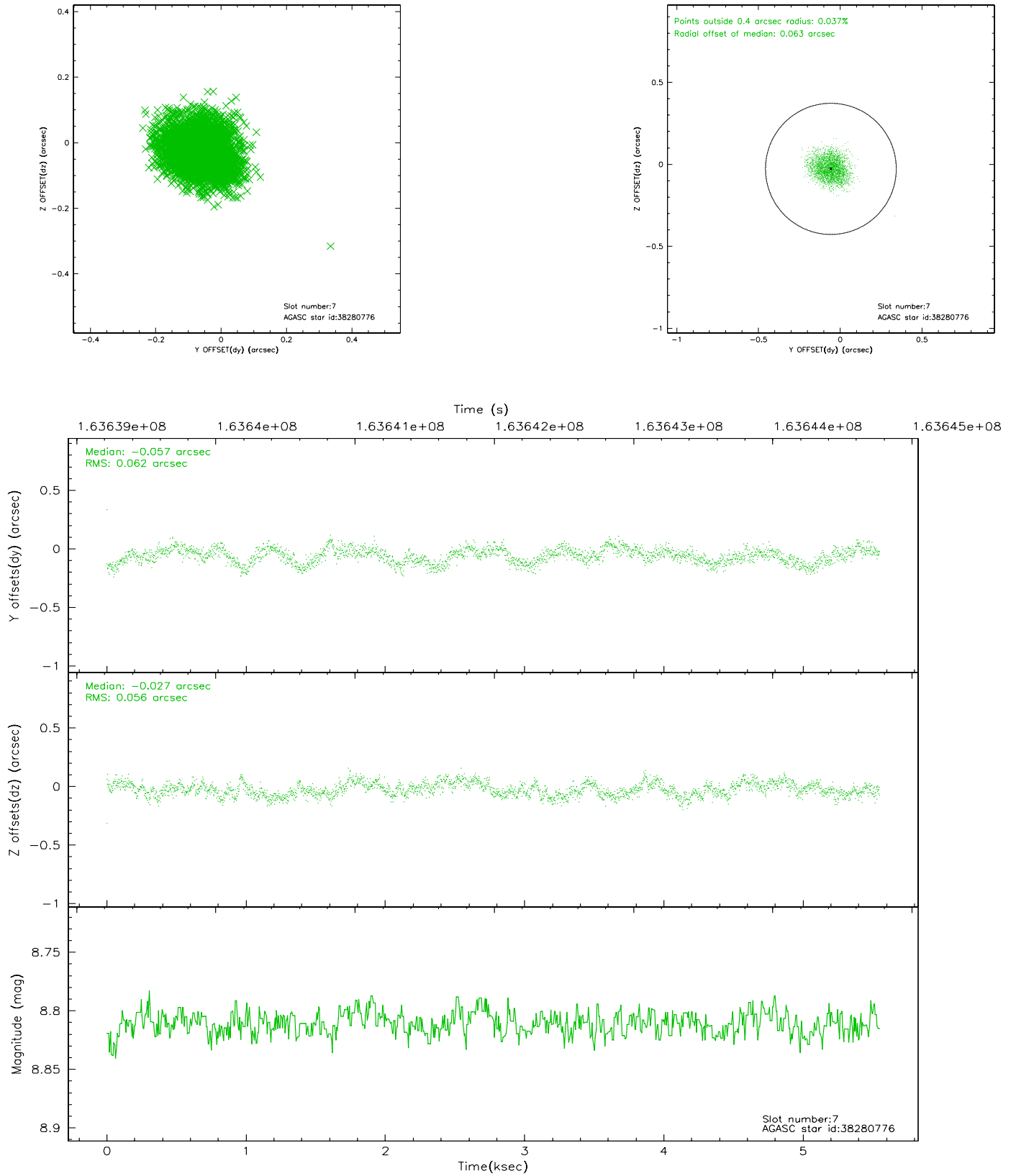
2.4.3 Slot 5



2.4.4 Slot 6

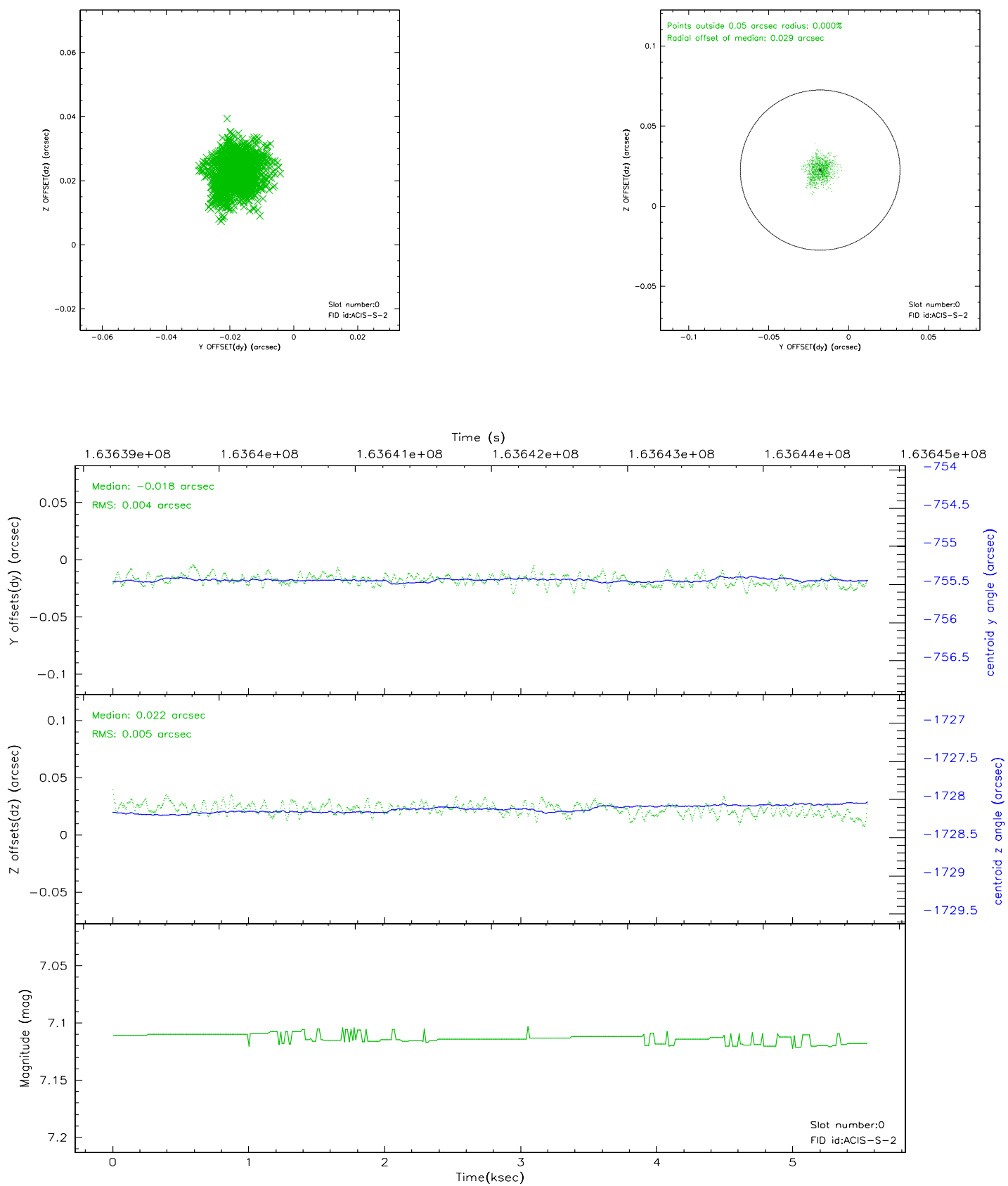


2.4.5 Slot 7

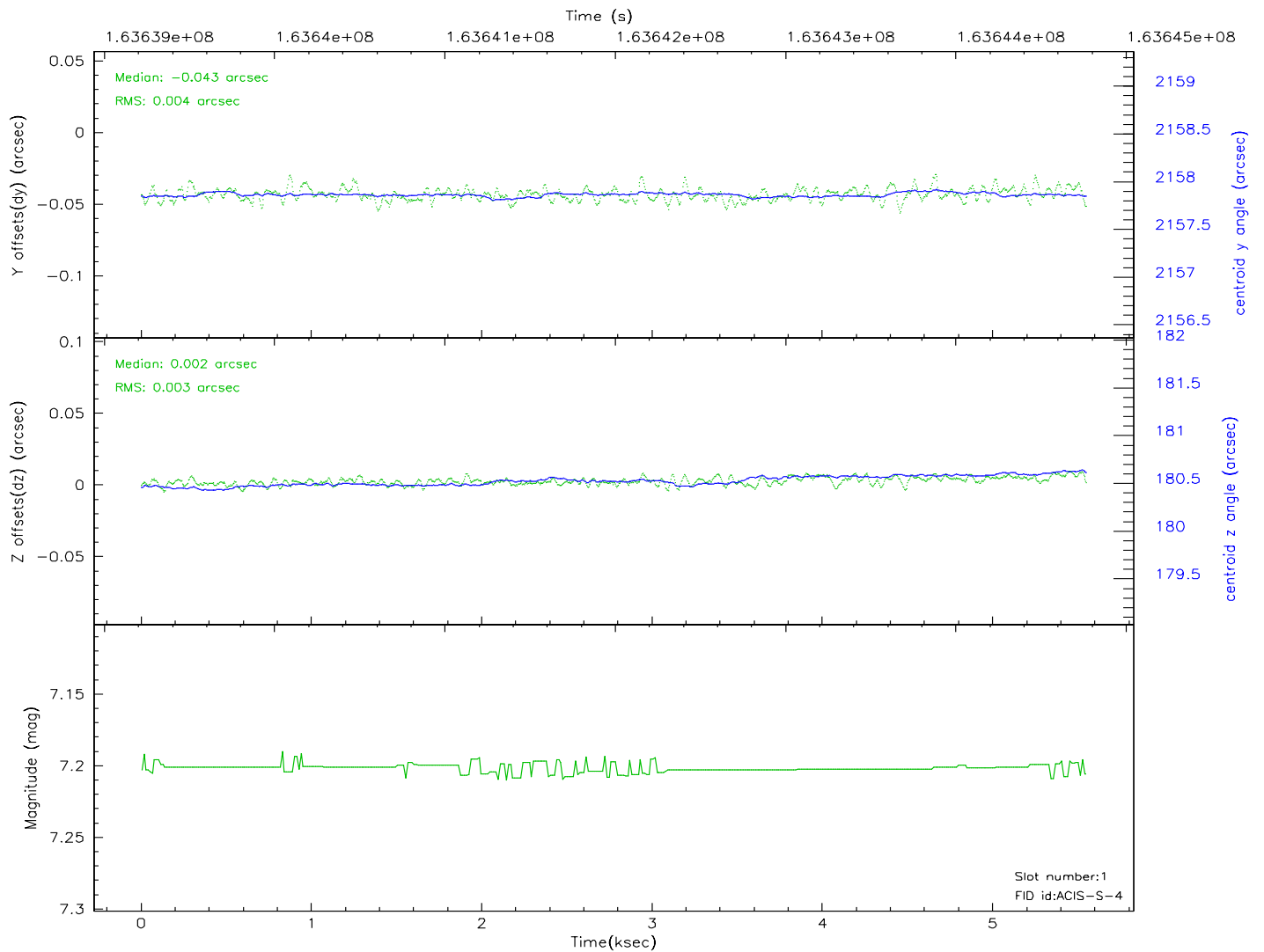
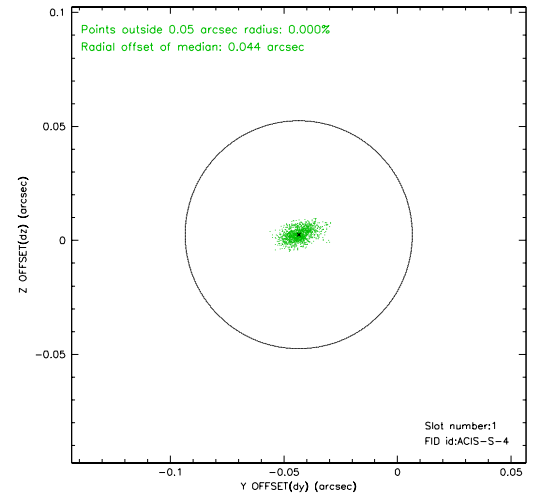
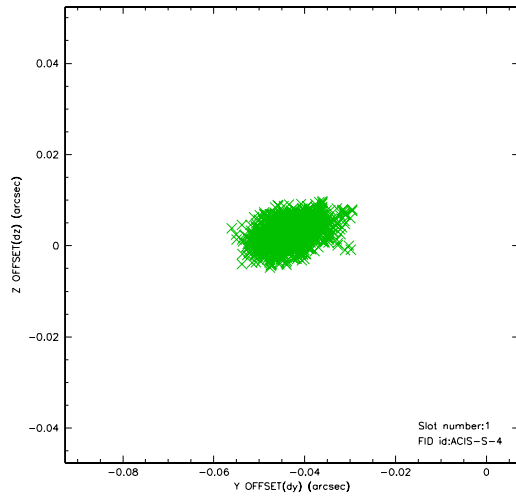


2.5 FID Slots

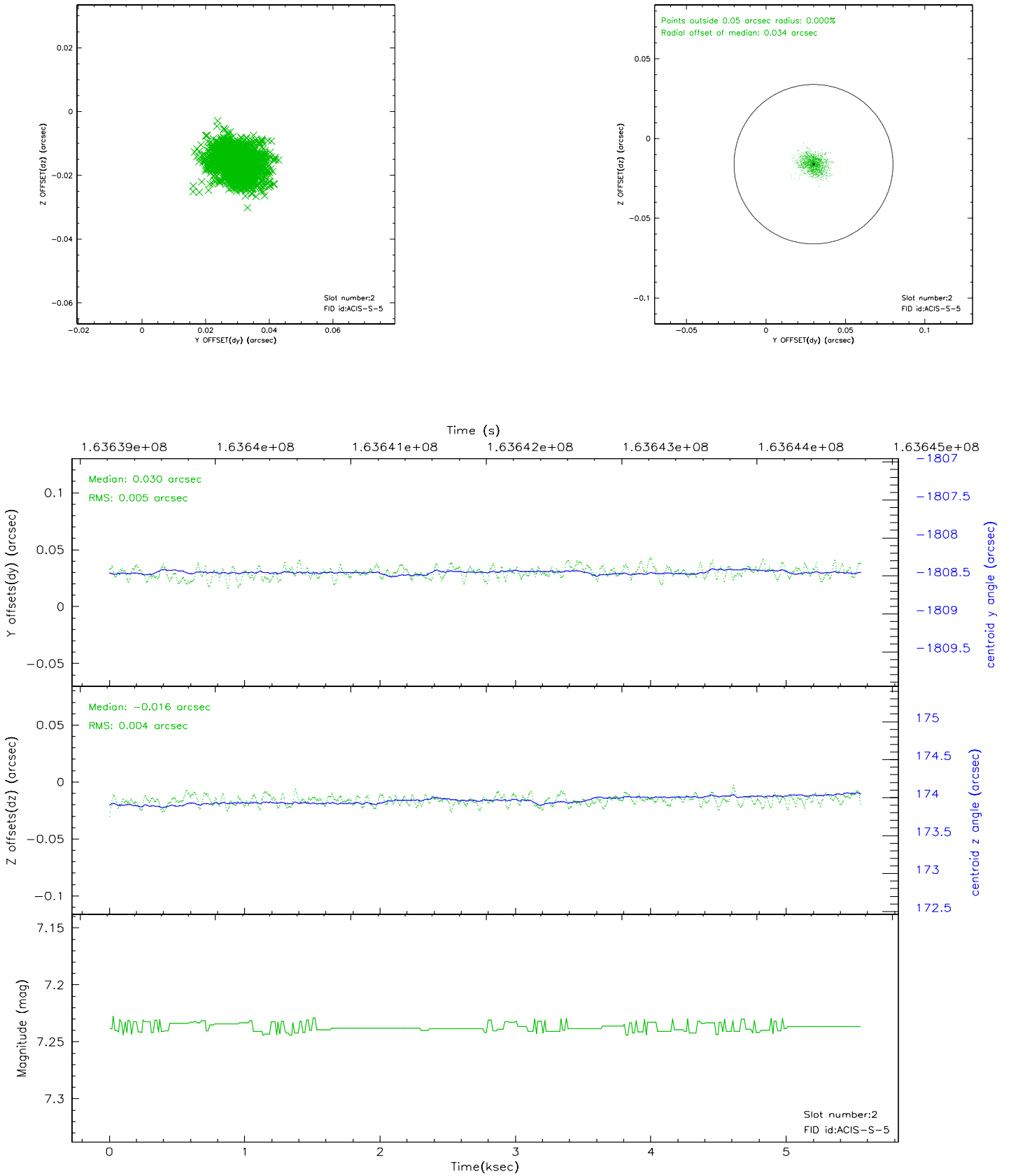
2.5.1 Slot 0



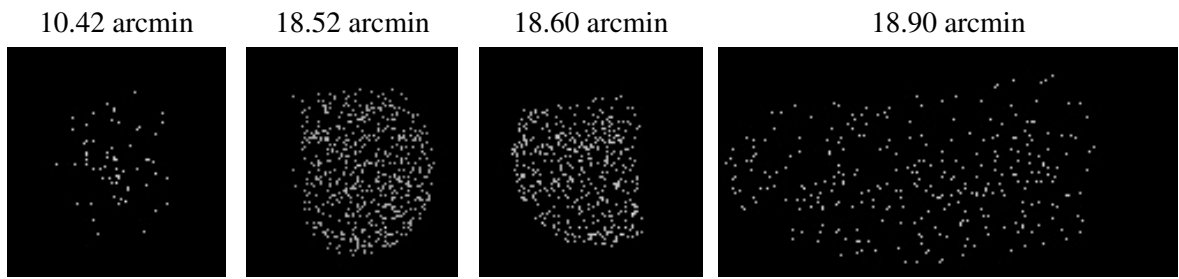
2.5.2 Slot 1



2.5.3 Slot 2



3 Point Sources



A Summary

A.1 Status

V&V Scientist	Beth Sundheim
V&V Date (YYYY-MM-DD)	2006.07.23
V&V Edition	1
V&V Disposition and Status	OK
V&V Charge Time	4.96

A.2 Comments