

# V&V Reference Report

## L2 ASCDS Version : 7.6.8

Observation 3977 - L2 Version 001  
Chandra X-Ray Center

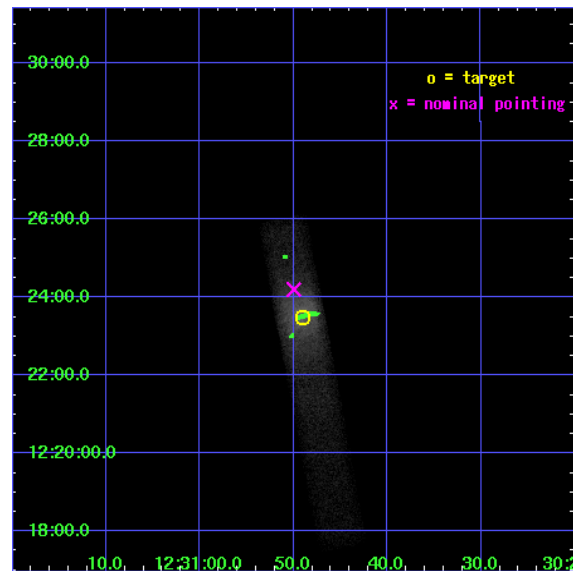
L2 Processing Date : Jul 20 2006

## Contents

<b>1</b>	<b>Front</b>	<b>2</b>
<b>2</b>	<b>OBI</b>	<b>3</b>
2.1	OBI . . . . .	3
2.1.1	Images . . . . .	3
2.1.2	Bias . . . . .	3
2.1.3	Parameters . . . . .	4
2.1.4	Events . . . . .	4
2.2	Compared Parameters . . . . .	5
2.3	Aspect . . . . .	6
2.4	Star Slots . . . . .	9
2.4.1	Slot 3 . . . . .	9
2.4.2	Slot 4 . . . . .	10
2.4.3	Slot 5 . . . . .	11
2.4.4	Slot 6 . . . . .	12
2.4.5	Slot 7 . . . . .	13
2.5	FID Slots . . . . .	14
2.5.1	Slot 0 . . . . .	14
2.5.2	Slot 1 . . . . .	15
2.5.3	Slot 2 . . . . .	16
<b>3</b>	<b>Point Sources</b>	<b>17</b>
<b>A</b>	<b>Summary</b>	<b>18</b>
A.1	Status . . . . .	18
A.2	Comments . . . . .	18

# 1 Front

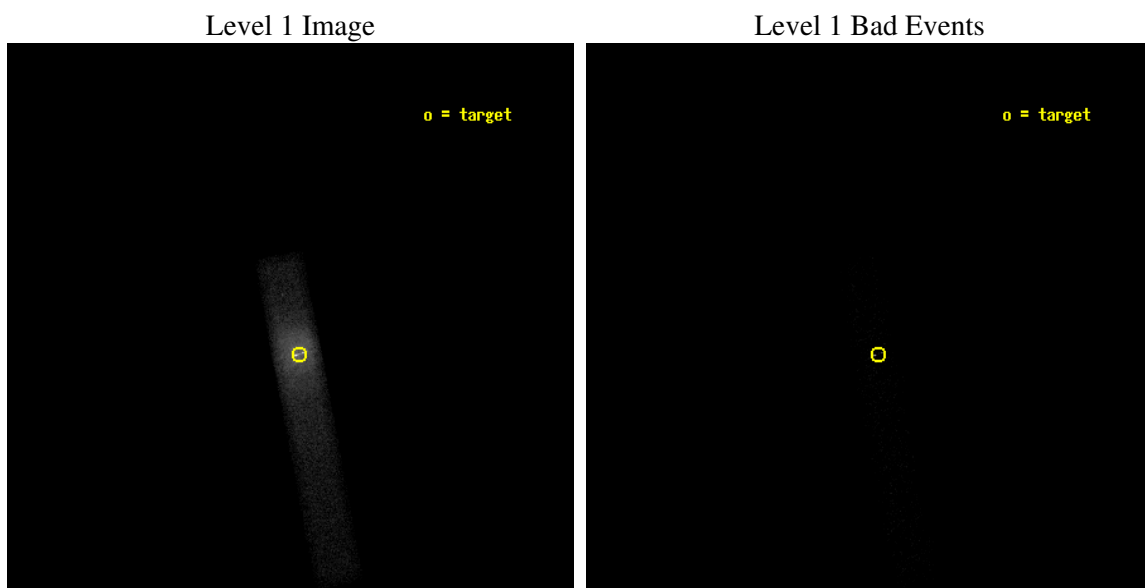
seq_num	700656
obs_id	3977
title	X-RAY VARIABILITY IN THE JET AND CORE OF M87
observer	Dr. Daniel Harris
object	M87
dtcycle	0
cycle	P
ra_targ	187.704167
dec_targ	12.391667
ra_nom	187.70820917836
dec_nom	12.403417690477
roll_nom	79.269563791361
revision	2
ontime	5817.200086683
livetime	5275.8934216244
ontime7	5817.200086683
l2events	63660



## 2 OBI

### 2.1 OBI

#### 2.1.1 Images



#### 2.1.2 Bias

Chip 7



### 2.1.3 Parameters

obi_num	0
ascdsver	7.6.8
caldbver	3.2.2
date	2006-07-20T16:57:36
revision	2

sched_exp_time	5065.000000
ontime	5924.8727187514
ontime7	5924.8727187514
l1events	70316

### 2.1.4 Events

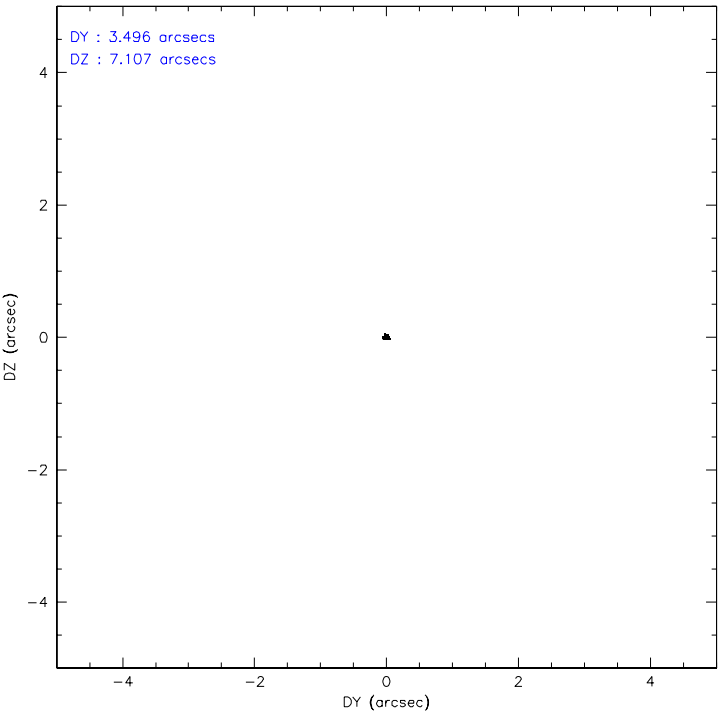
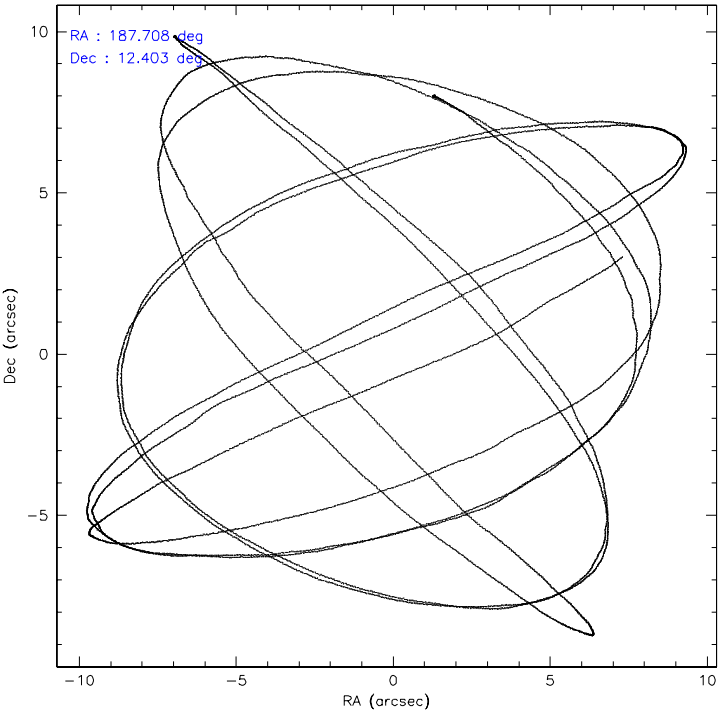
	<b>ccd 7</b>
level 1 events	70316
rejected events	5858
rejected %	8%

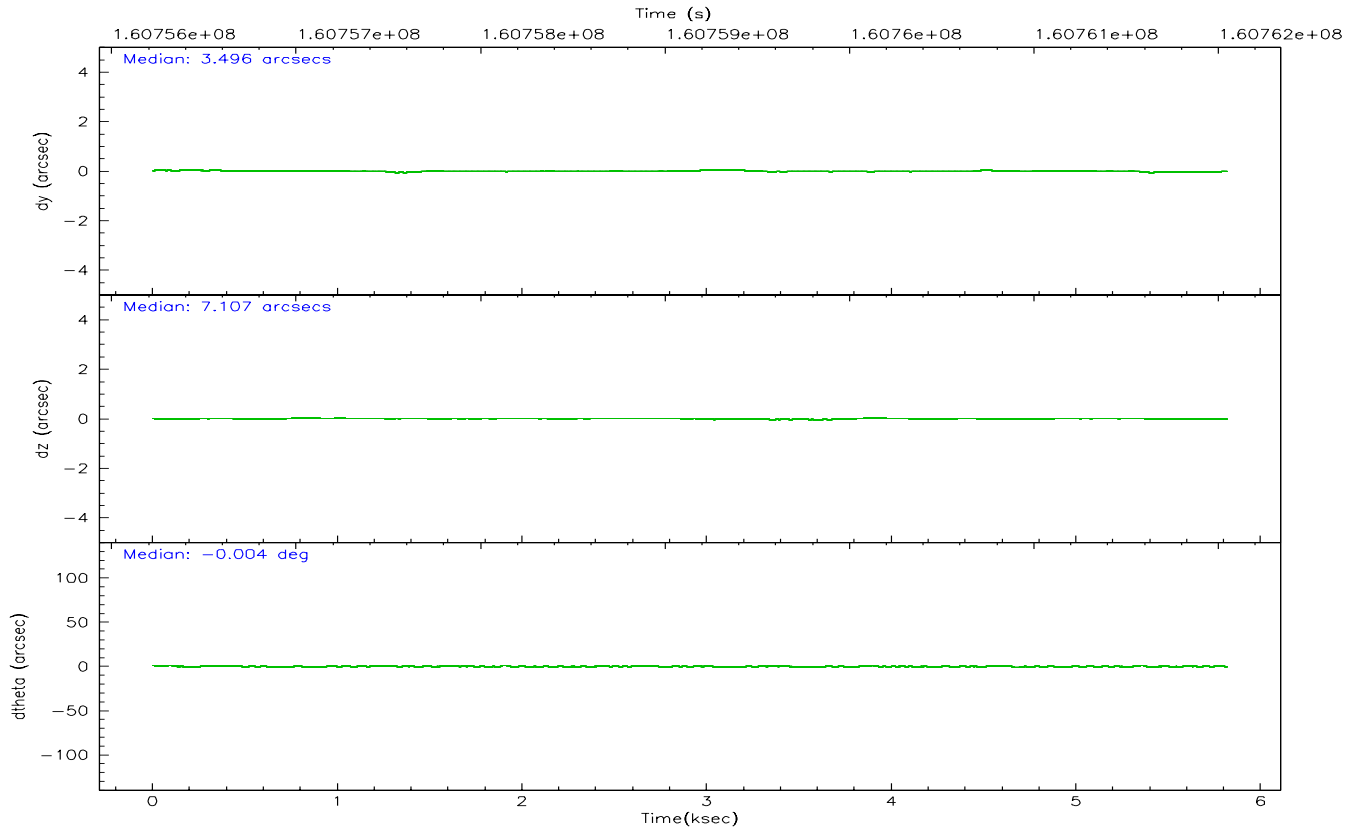
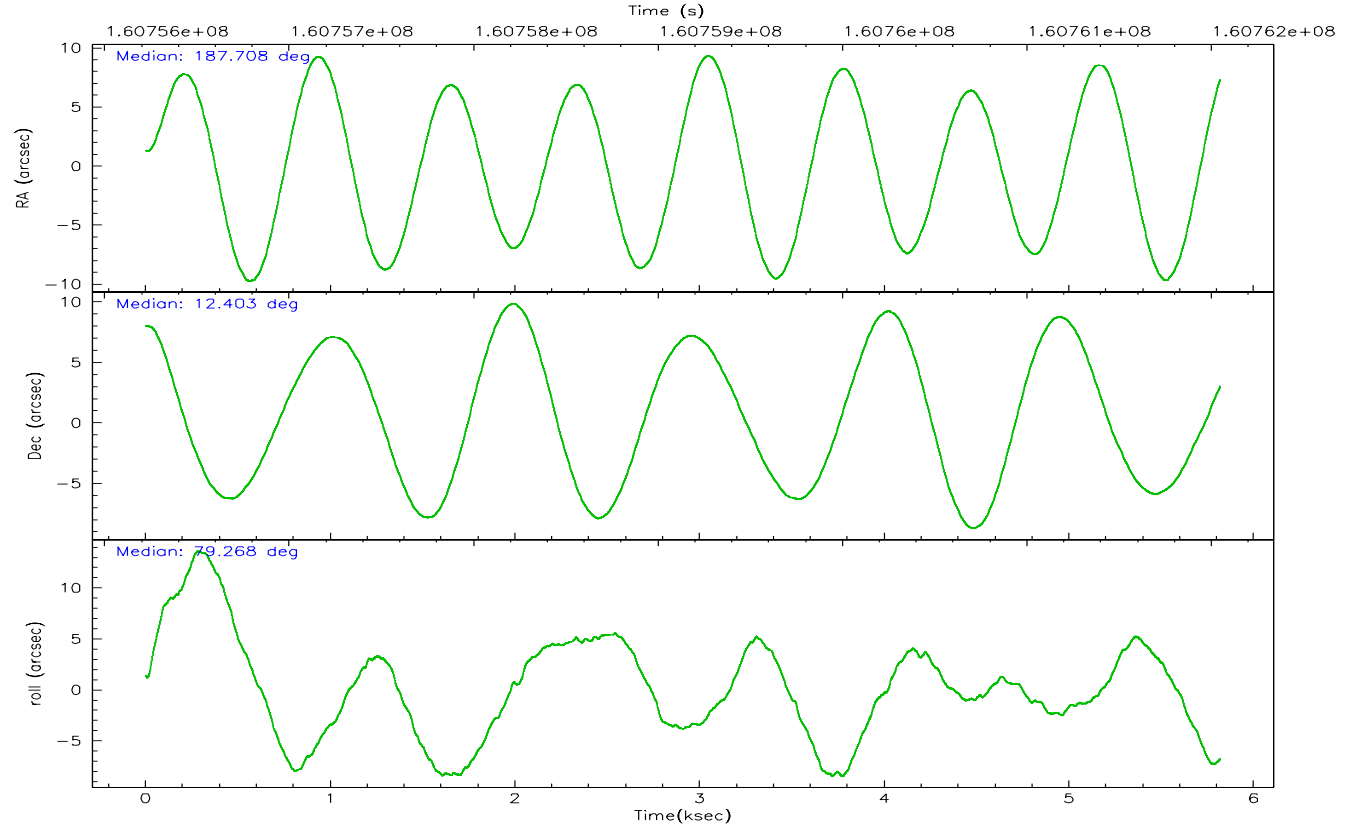
	<b>ccd 7</b>
grade 0 events	20517
	29%
grade 1 events	103
	0%
grade 2 events	17584
	25%
grade 3 events	7552
	10%
grade 4 events	7268
	10%
grade 5 events	1016
	1%
grade 6 events	12767
	18%
grade 7 events	3509
	4%

## 2.2 Compared Parameters

Parameter	Planned	Actual	Parameter	Planned	Actual
Instrument	ACIS	ACIS	Obspar format version number	6	6
Detector	ACIS-7	ACIS-7	Obspar file type	PREDICTED	ACTUAL
Grating	NONE	NONE	Obspar update status	NONE	UPDATED
Data mode	FAINT	FAINT	On-chip summing requested	N	N
Observation mode	POINTING	POINTING	Subarray requested	1/8	1/8
Pointing RA	187.717790	187.7082091783616	Subarray start row	0	449
Pointing Dec	12.377902	12.40341769047735	Subarray row count	1024	128
Pointing Roll	79.110871	79.26956379136099	Alternating exposures requested	N	N
SIM focus pos (mm)	-0.684267	-0.6828225247311905	Primary exposure time	0.000000	0.4
SIM defocus (mm)	0	0.001444936568705701			
SIM translation stage pos (mm)	-190.132523	-190.1400660498719			
SIM translation stage offset (mm)	0	0.00754346686406393			
Observation start time	160756979.184000	160755732.30495			
Observation start date	2003-02-04T14:41:55	2003-02-04T14:22:12			
Observation end time	160762044.184000	160762250.79273			
Observation end date	2003-02-04T16:06:20	2003-02-04T16:10:50			
Read mode	TIMED	TIMED			

### 2.3 Aspect





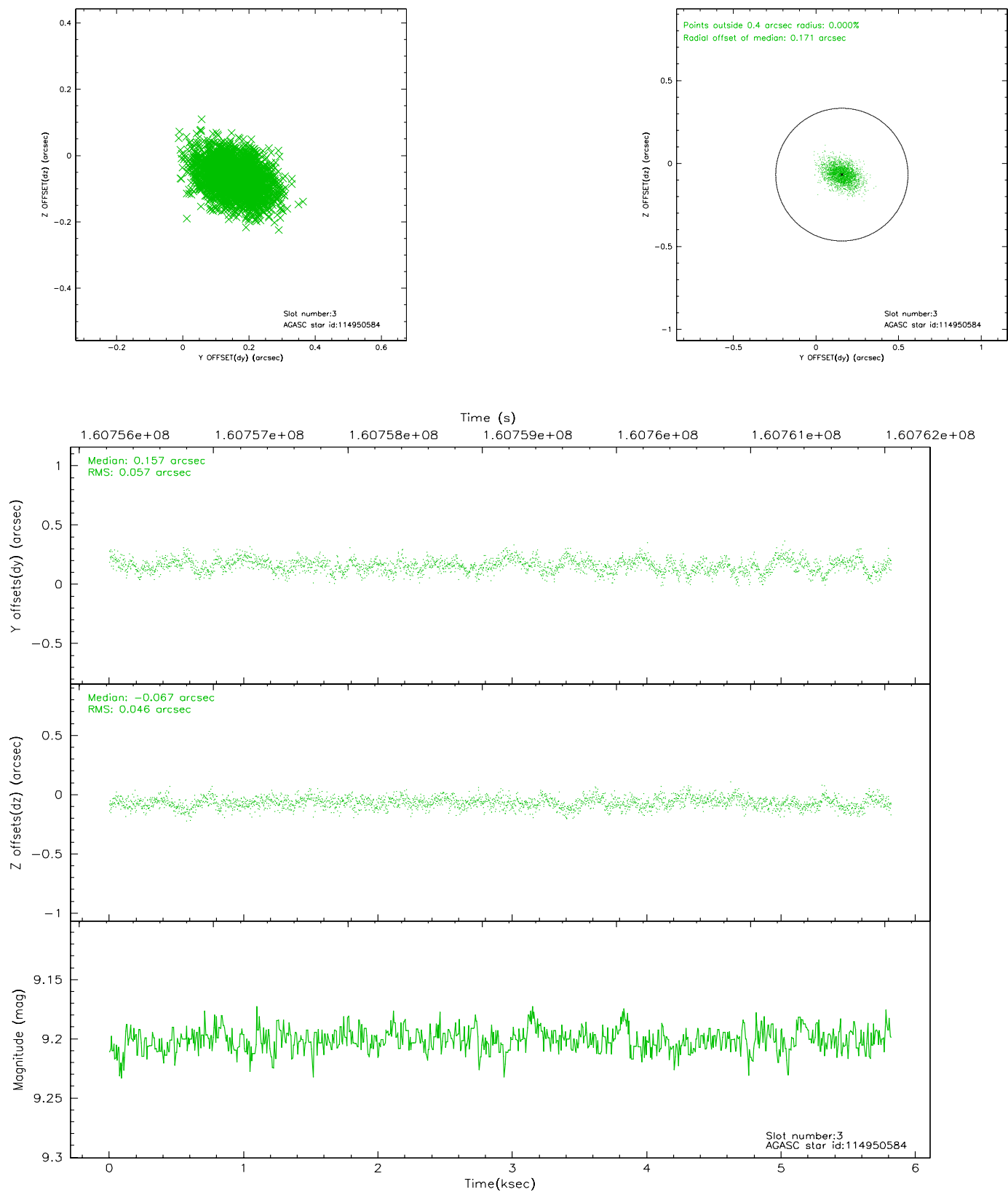
### Slot Statistics

slot	status	id	mag	n_pts	med_dy	med_dz	dr1	dr2	ra	dec	mean_y	mean_z
0	FID	ACIS-S-2	7.12	1419	0.001	0.033	0.006	0.010	0.000000	0.000000	-756.15	-1728.24
1	FID	ACIS-S-4	7.20	1419	-0.043	-0.009	0.005	0.009	0.000000	0.000000	2156.62	179.14
2	FID	ACIS-S-5	7.24	1420	0.010	-0.015	0.006	0.011	0.000000	0.000000	-1807.67	173.97
3	GUIDE	114950584	9.20	2832	0.157	-0.067	0.076	0.132	187.487323	11.827248	-2099.37	423.14
4	GUIDE	114955056	8.34	2838	0.026	0.234	0.105	0.165	187.914001	12.127854	-753.70	-847.66
5	GUIDE	114956144	9.79	2838	0.008	-0.046	0.123	0.195	187.100545	12.039156	-1605.94	1904.64
6	GUIDE	115348424	9.53	2839	-0.067	-0.054	0.097	0.156	187.199498	13.087929	2168.10	2268.77
7	GUIDE	114952824	8.55	2838	-0.126	-0.066	0.072	0.113	187.703904	12.486727	376.35	122.89

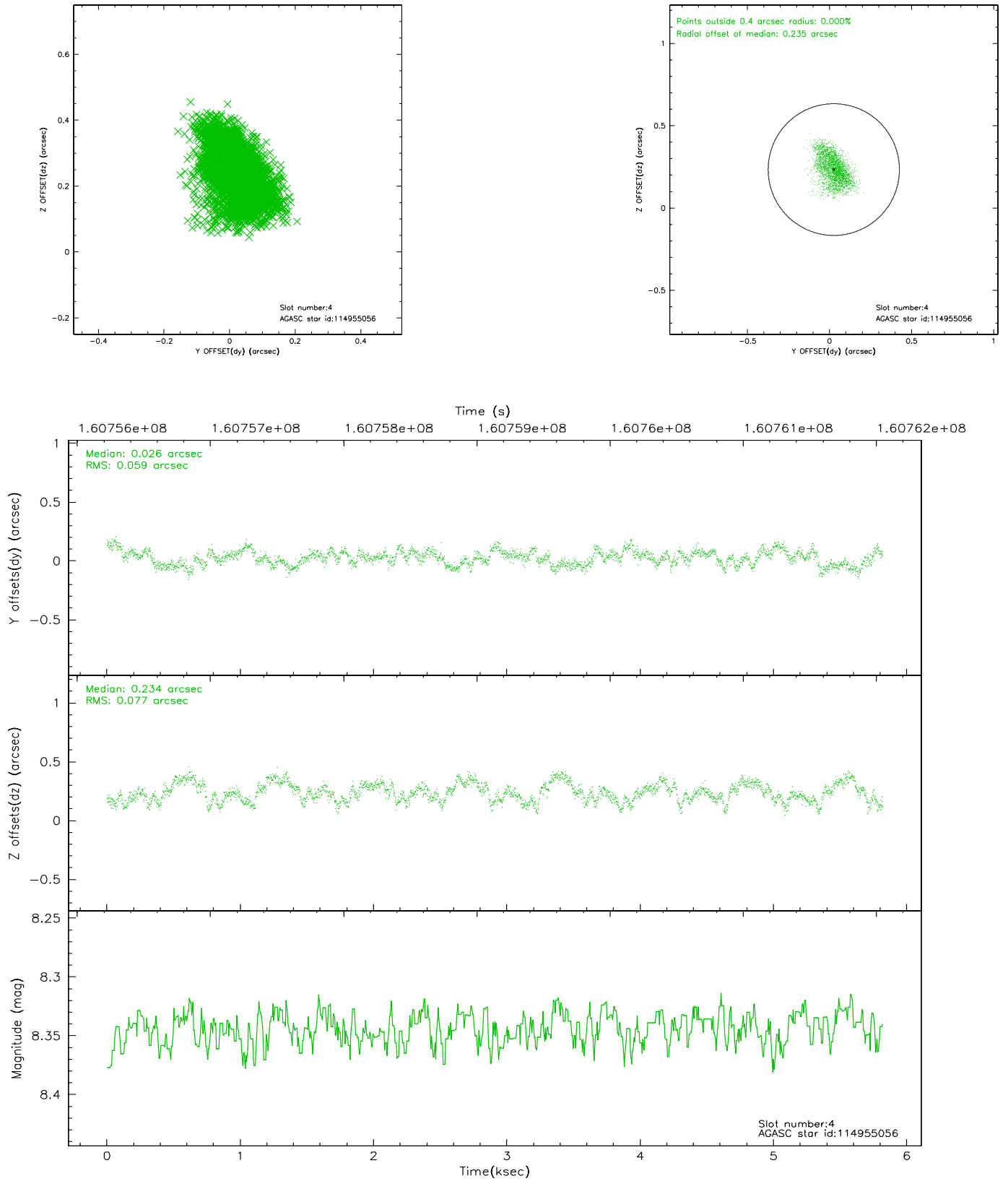


## 2.4 Star Slots

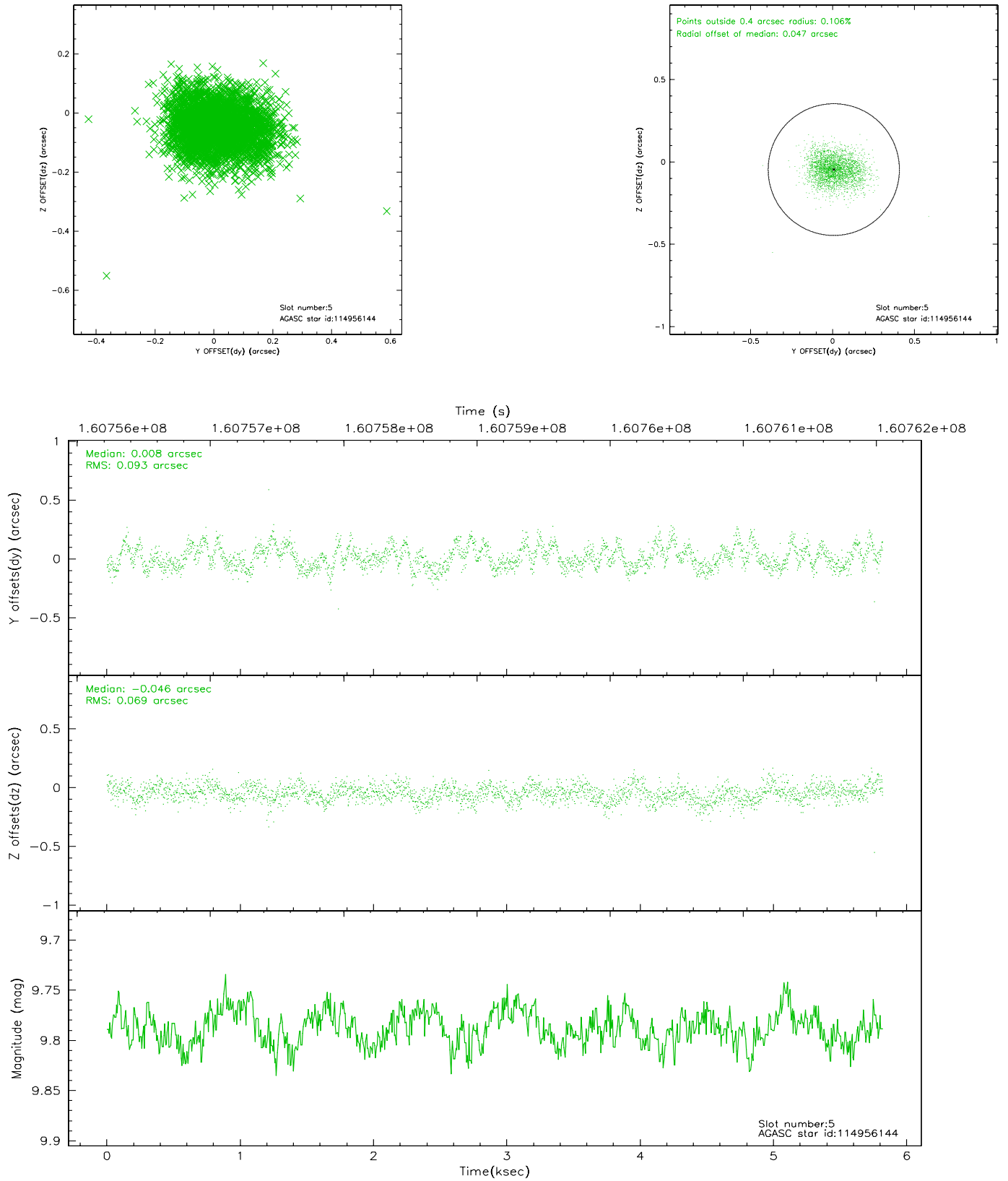
### 2.4.1 Slot 3



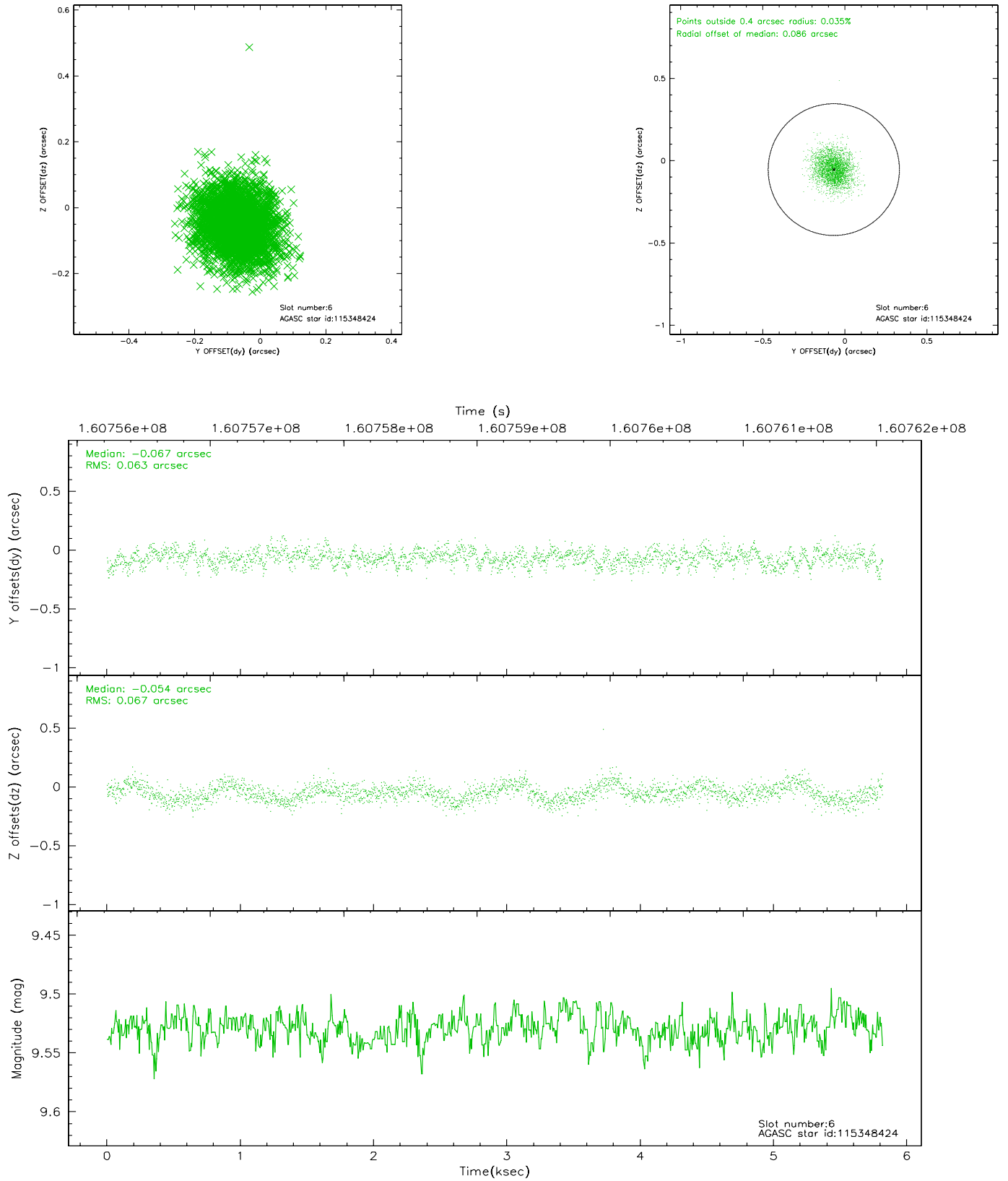
## 2.4.2 Slot 4



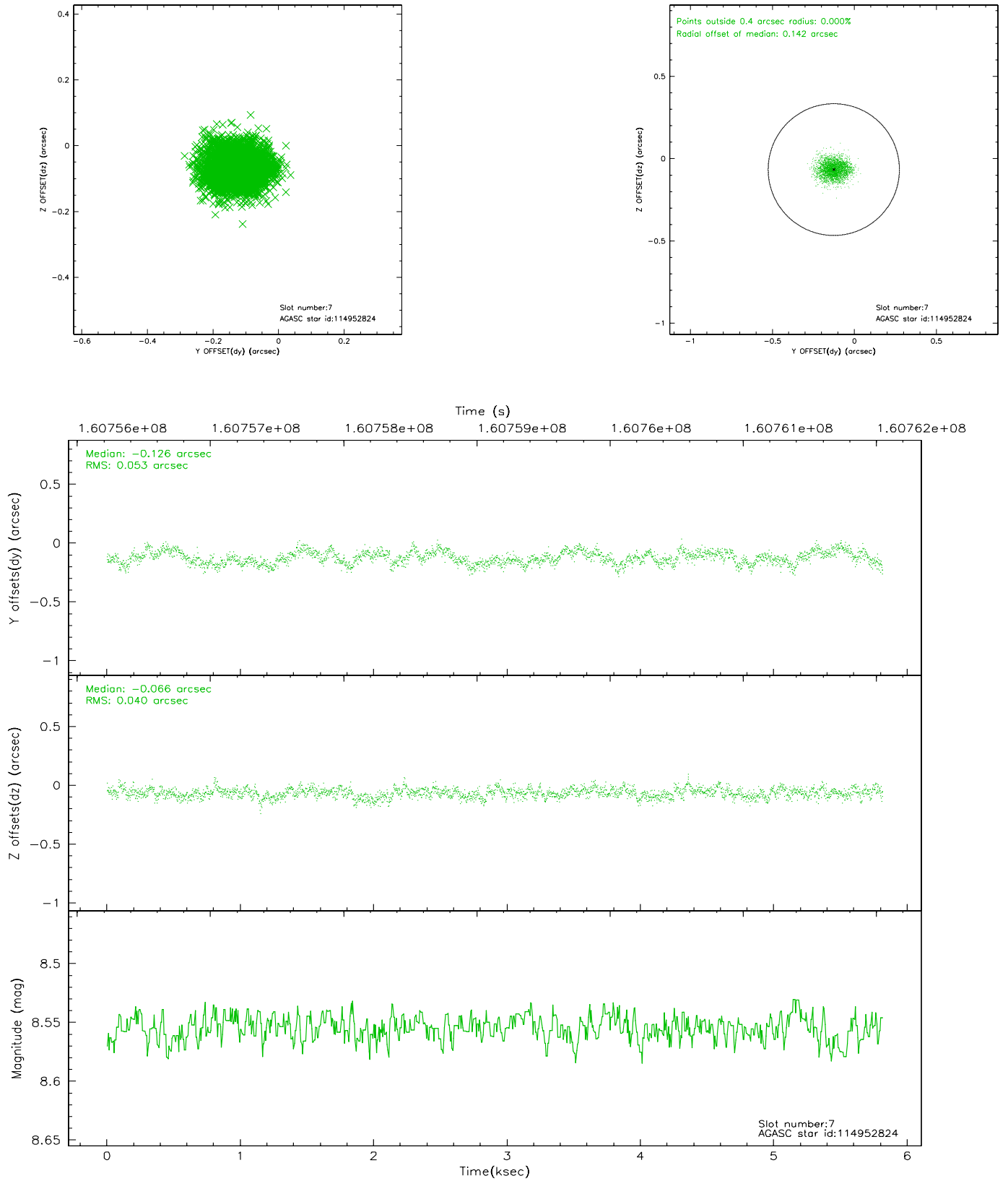
### 2.4.3 Slot 5



## 2.4.4 Slot 6

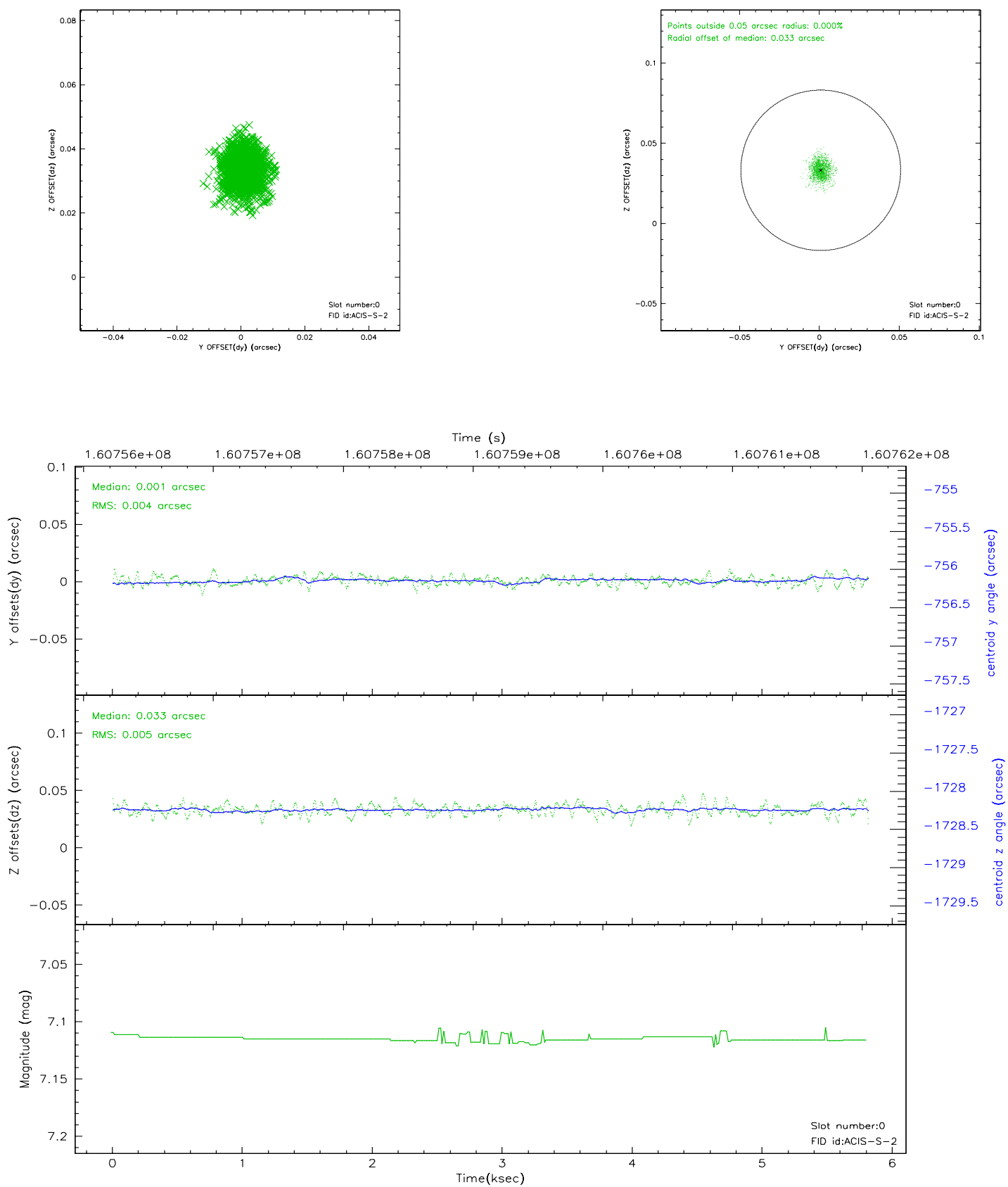


## 2.4.5 Slot 7

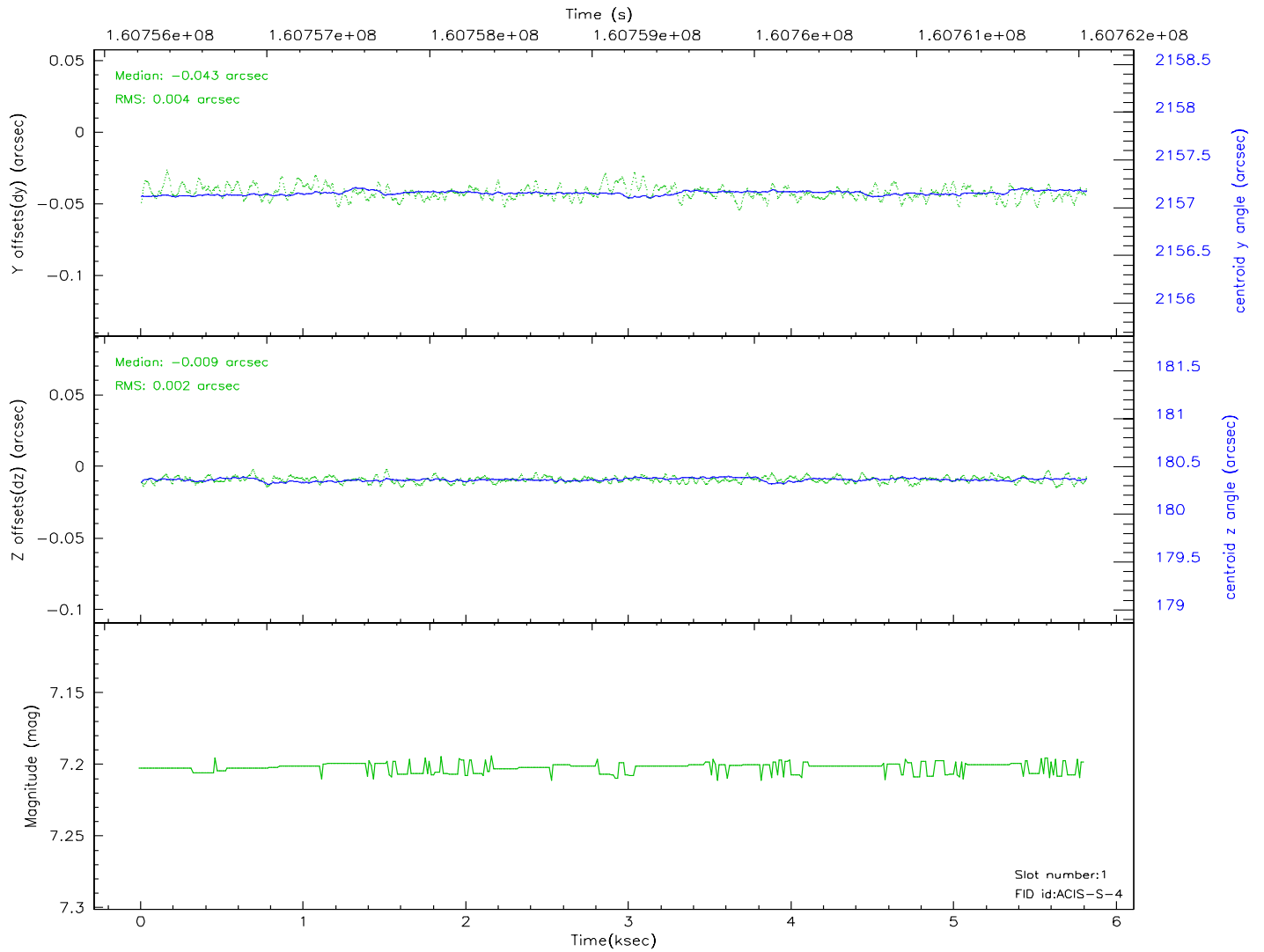
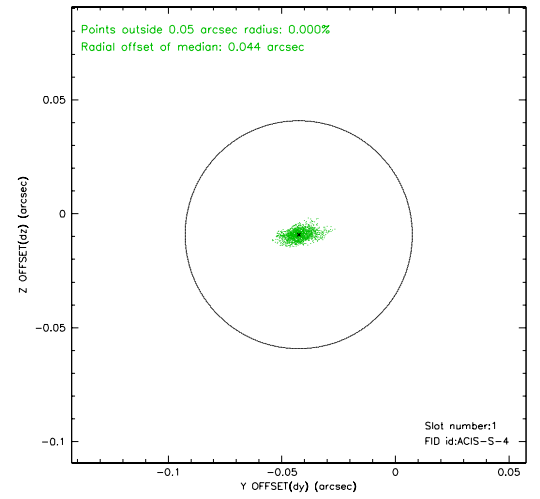
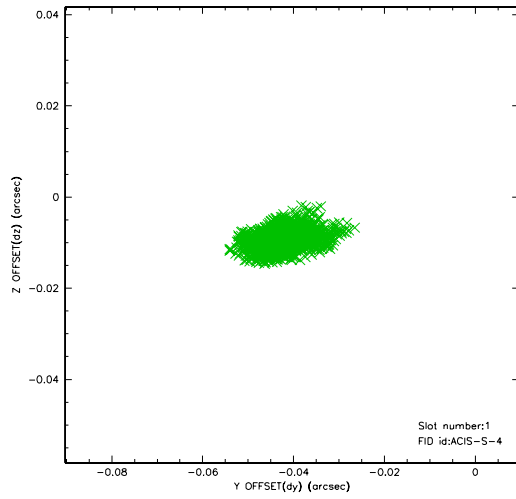


## 2.5 FID Slots

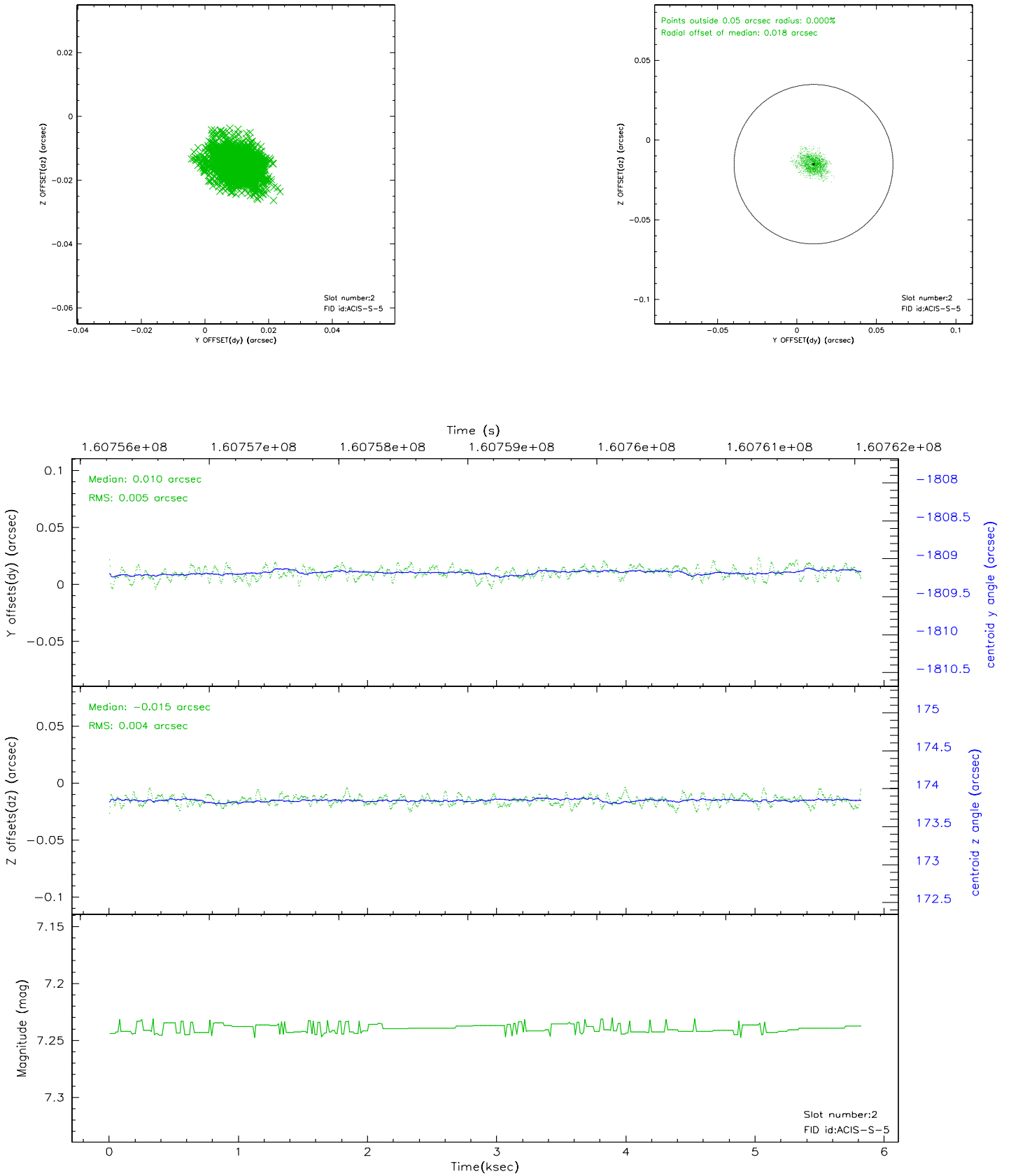
### 2.5.1 Slot 0



## 2.5.2 Slot 1



### 2.5.3 Slot 2





### 3 Point Sources

## A Summary

### A.1 Status

V&V Scientist	Jen Lauer
V&V Date (YYYY-MM-DD)	2006.07.20
V&V Edition	1
V&V Disposition and Status	OK
V&V Charge Time	5.817

### A.2 Comments

Monitor constraint met.