

V&V Reference Report

L2 ASCDS Version : 7.6.8

Observation 3897 - L2 Version 001
Chandra X-Ray Center

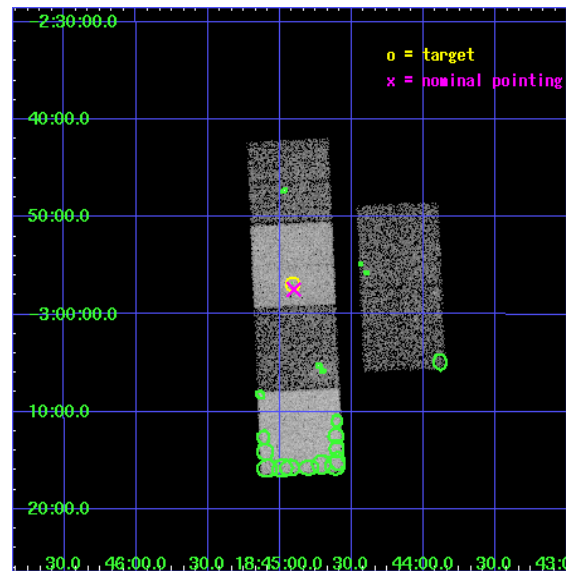
L2 Processing Date : Jul 5 2006

Contents

1	Front	2
2	OBI	3
2.1	OBI	3
2.1.1	Images	3
2.1.2	Bias	3
2.1.3	Parameters	4
2.1.4	Events	4
2.2	Compared Parameters	5
2.3	Aspect	6
2.4	Star Slots	9
2.4.1	Slot 3	9
2.4.2	Slot 4	10
2.4.3	Slot 5	11
2.4.4	Slot 6	12
2.4.5	Slot 7	13
2.5	FID Slots	14
2.5.1	Slot 0	14
2.5.2	Slot 1	15
2.5.3	Slot 2	16
3	Point Sources	17
A	Summary	18
A.1	Status	18
A.2	Comments	18

1 Front

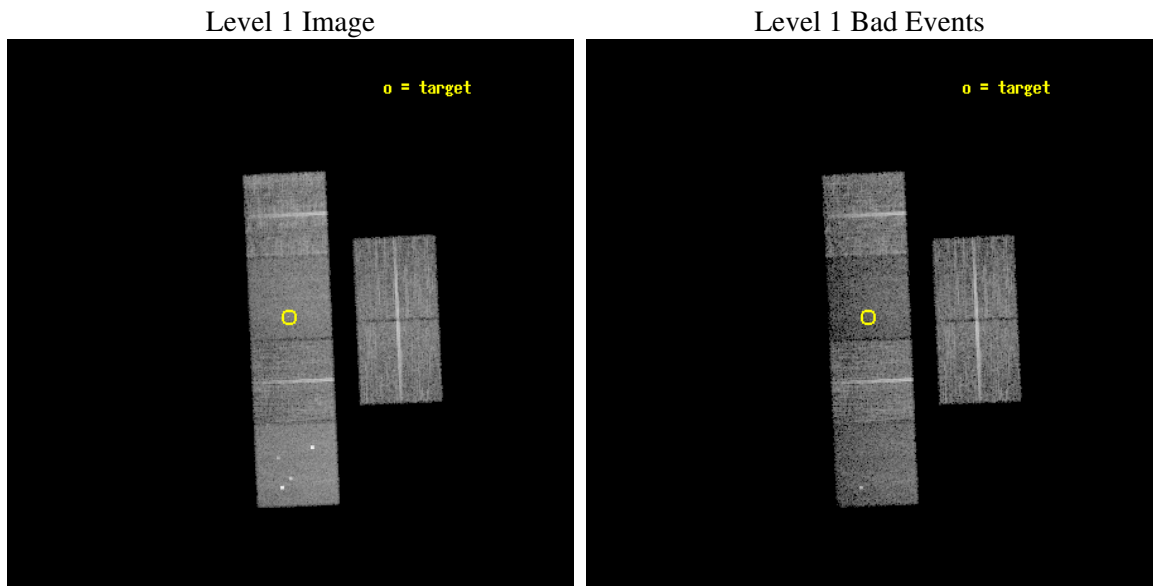
seq_num	500376
obs_id	3897
title	IS AX J1845-0258 AN ANOMALOUS X-RAY PULSAR?
observer	Professor Victoria Kaspi
object	AX J1845-0258
dtcycle	0
cycle	P
ra_targ	281.2275
dec_targ	-2.948056
ra_nom	281.22538942476
dec_nom	-2.9574989261049
roll_nom	267.46331328684
revision	2
ontime	11926.399955571
livetime	11775.380698117
ontime2	11926.399955571
ontime3	11926.399955571
ontime5	11926.399955571
ontime6	11926.399955571
ontime7	11926.399955571
ontime8	11926.399955571
l2events	80859



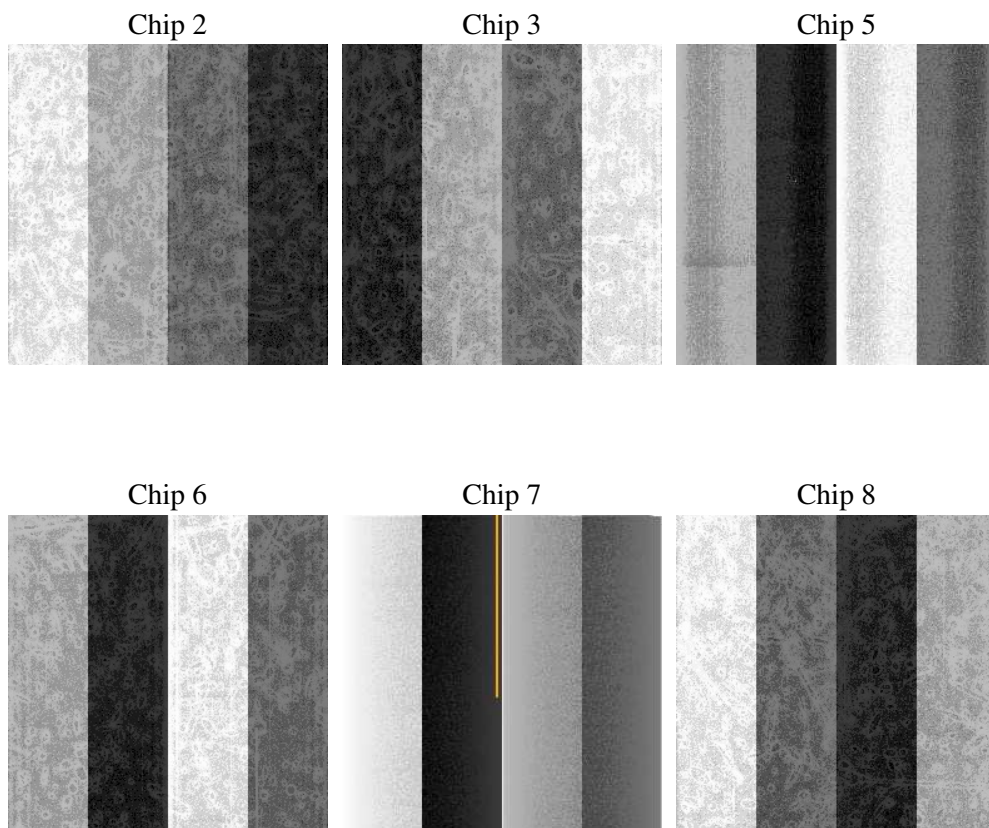
2 OBI

2.1 OBI

2.1.1 Images



2.1.2 Bias



2.1.3 Parameters

obi_num	0
ascdsver	7.6.8
caldbver	3.2.2
date	2006-07-05T07:37:59
revision	2

sched_exp_time	12000.000000
ontime	11933.367221832
ontime2	11933.367221832
ontime3	11933.367191911
ontime5	11933.367221832
ontime6	11933.367221832
ontime7	11933.367221832
ontime8	11933.367221832
l1events	375623

2.1.4 Events

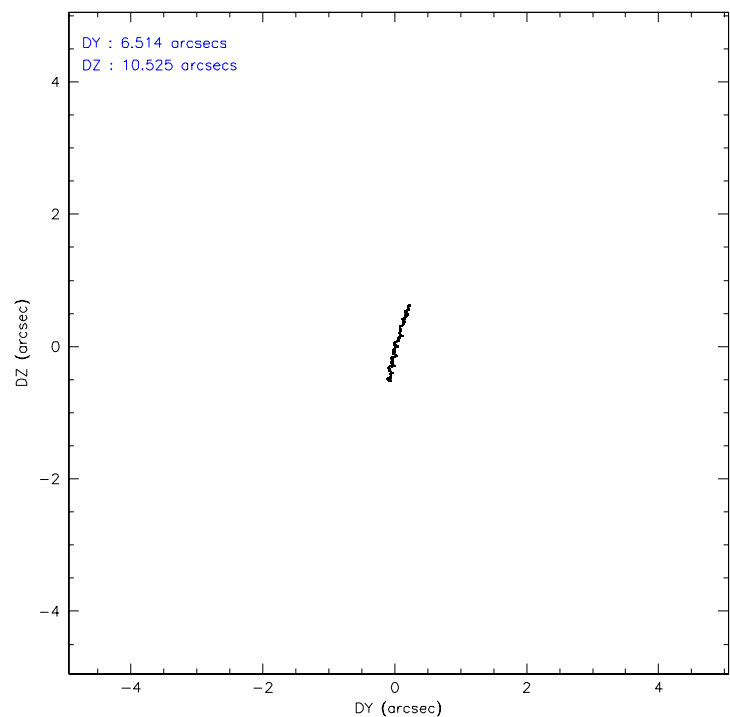
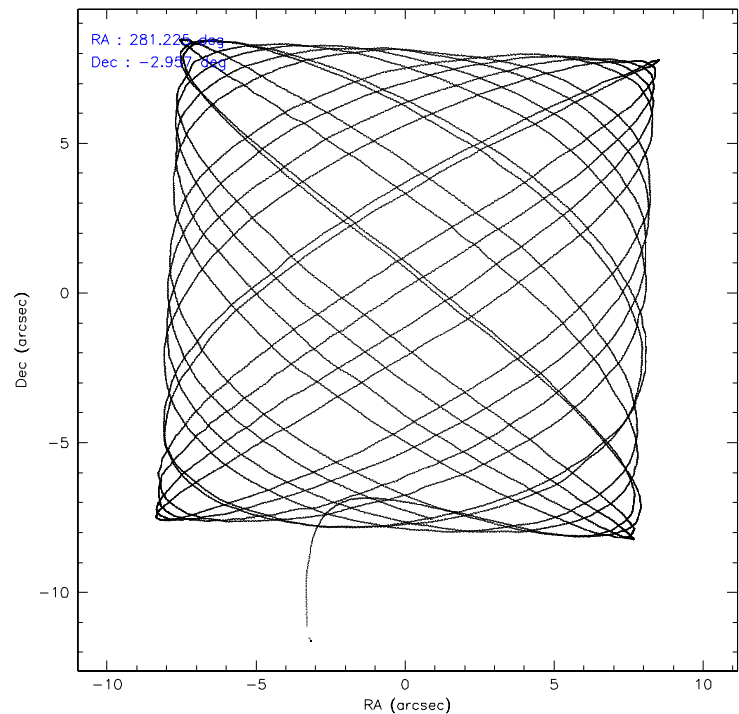
	ccd 2	ccd 3	ccd 5	ccd 6	ccd 7	ccd 8
level 1 events	60844	57424	73638	58448	54823	70446
rejected events	54761	51583	34691	51256	29091	54037
rejected %	90%	89%	47%	87%	53%	76%

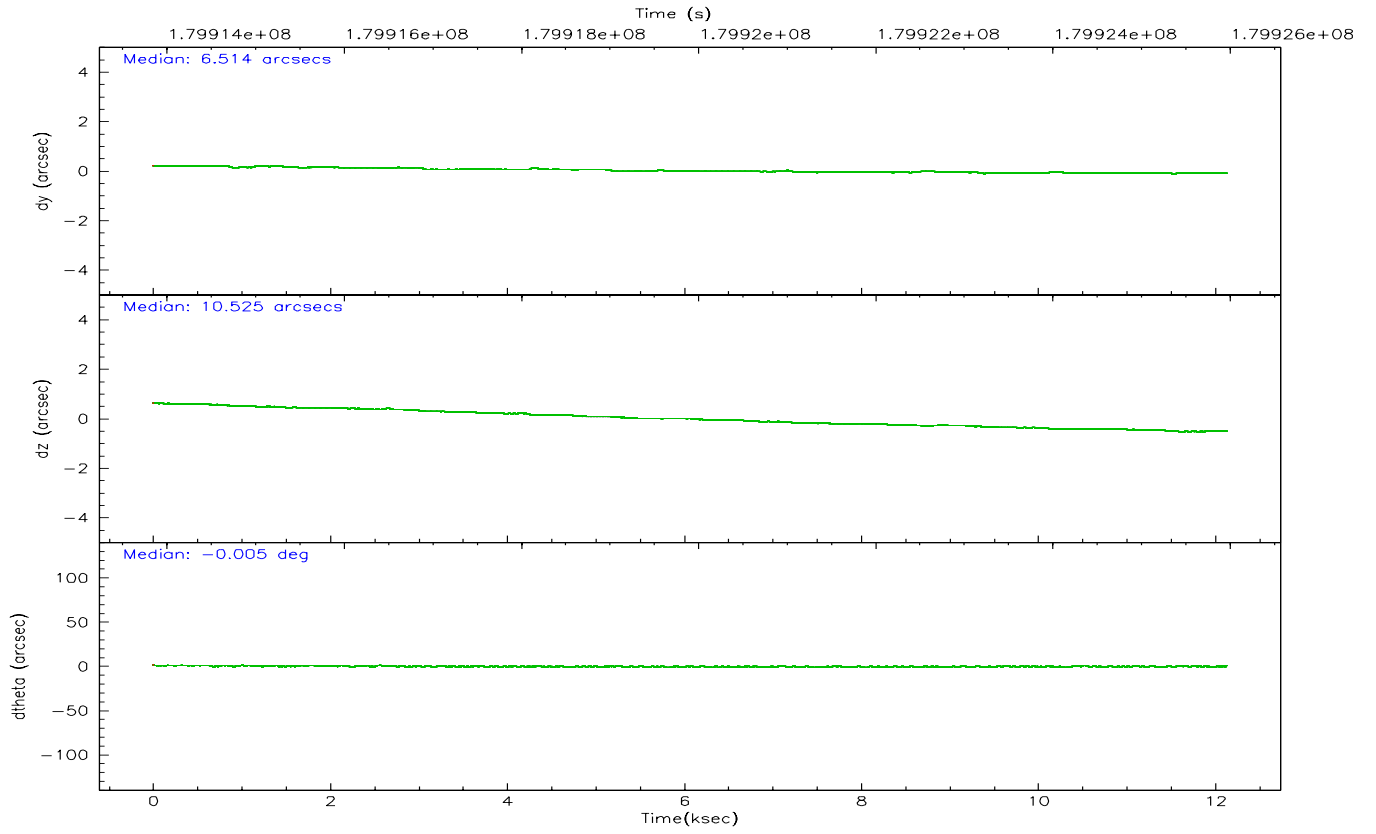
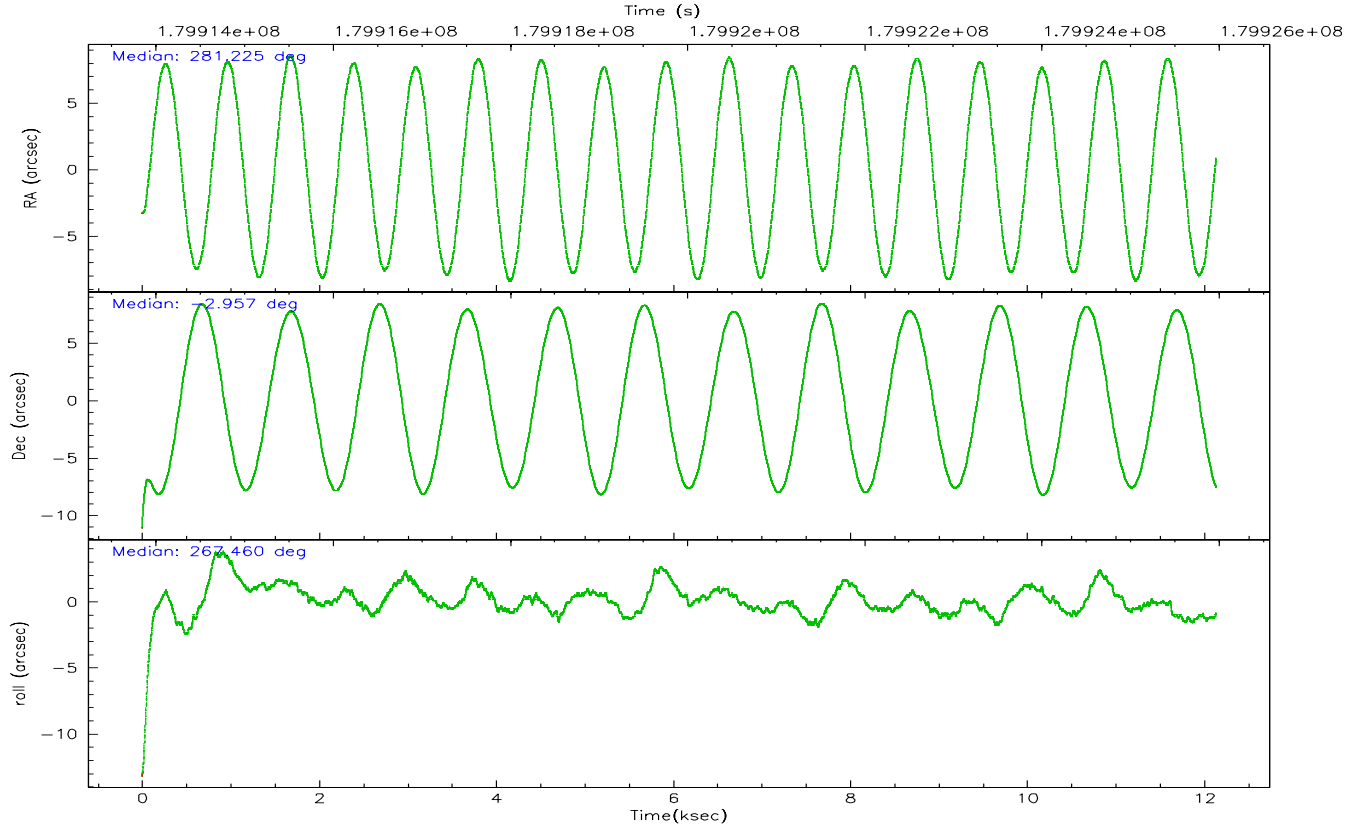
	ccd 2	ccd 3	ccd 5	ccd 6	ccd 7	ccd 8
grade 0 events	2438	2378	5068	2992	1761	4900
	4%	4%	6%	5%	3%	6%
grade 1 events	41	27	116	25	41	42
	0%	0%	0%	0%	0%	0%
grade 2 events	1337	1194	12332	1454	6659	3911
	2%	2%	16%	2%	12%	5%
grade 3 events	676	663	1073	769	1622	1702
	1%	1%	1%	1%	2%	2%
grade 4 events	651	604	968	687	1652	1596
	1%	1%	1%	1%	3%	2%
grade 5 events	1622	1819	4060	2004	4292	2805
	2%	3%	5%	3%	7%	3%
grade 6 events	984	1005	19526	1296	14052	4306
	1%	1%	26%	2%	25%	6%
grade 7 events	53095	49734	30495	49221	24744	51184
	87%	86%	41%	84%	45%	72%

2.2 Compared Parameters

Parameter	Planned	Actual	Parameter	Planned	Actual
Instrument	ACIS	ACIS	Obspar format version number	6	6
Detector	ACIS-235678	ACIS-235678	Obspar file type	PREDICTED	ACTUAL
Grating	NONE	NONE	Obspar update status	NONE	UPDATED
Data mode	VFAINT	VFAINT	On-chip summing requested	N	N
Observation mode	POINTING	POINTING	Subarray requested	NONE	NONE
Pointing RA	281.212483	281.2253894247565	Alternating exposures requested	N	N
Pointing Dec	-2.933500	-2.957498926104883	Primary exposure time	0.000000	3.2
Pointing Roll	267.306030	267.4633132868406			
SIM focus pos (mm)	-0.684267	-0.6828225247311905			
SIM defocus (mm)	0	0.001444936568705701			
SIM translation stage pos (mm)	-190.132523	-190.1400660498719			
SIM translation stage offset (mm)	0	0.00754346686406393			
Observation start time	179913971.184000	179912895.99232			
Observation start date	2003-09-14T08:05:07	2003-09-14T07:48:15			
Observation end time	179925971.184000	179926895.44292			
Observation end date	2003-09-14T11:25:07	2003-09-14T11:41:35			
Read mode	TIMED	TIMED			

2.3 Aspect



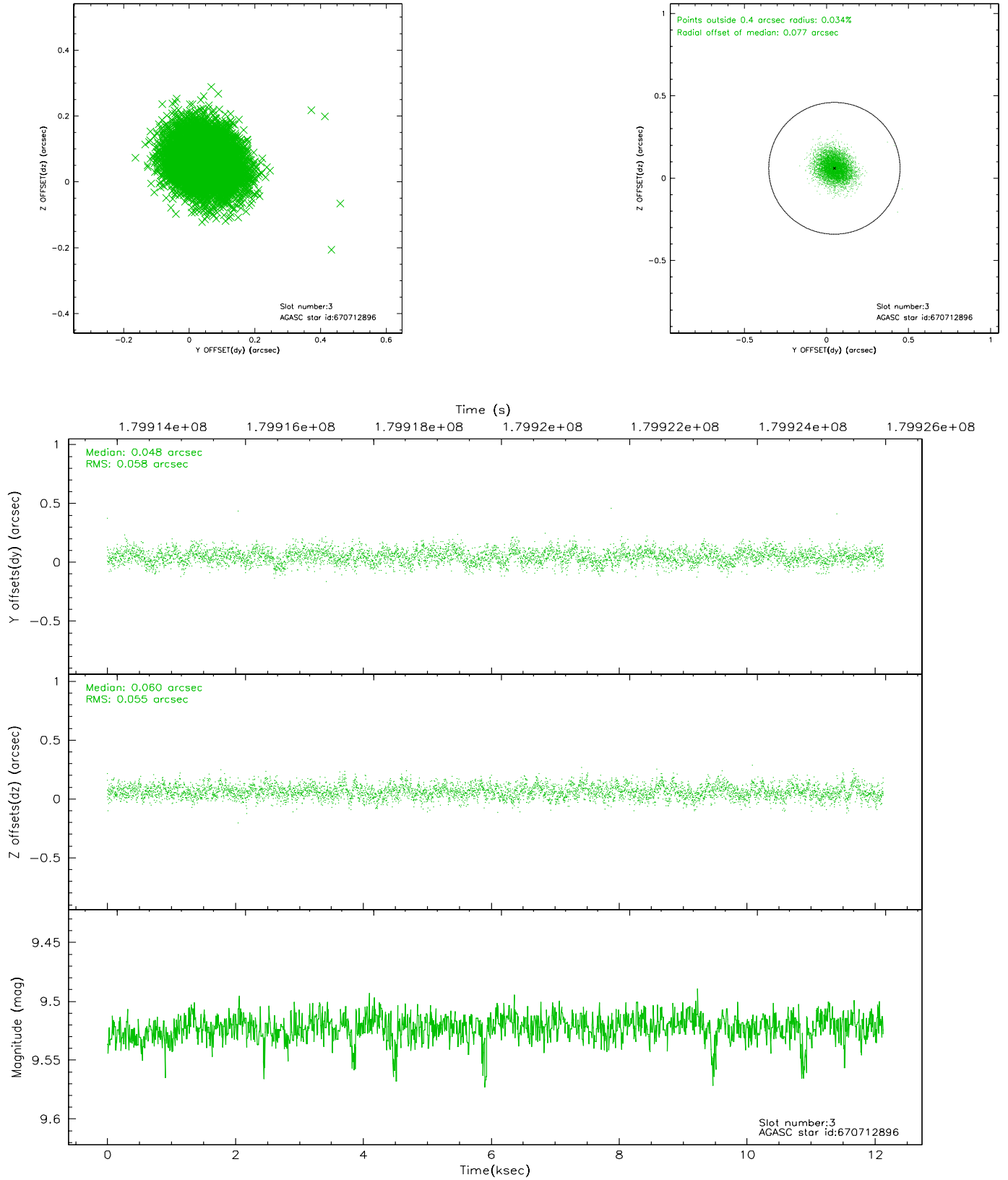


Slot Statistics

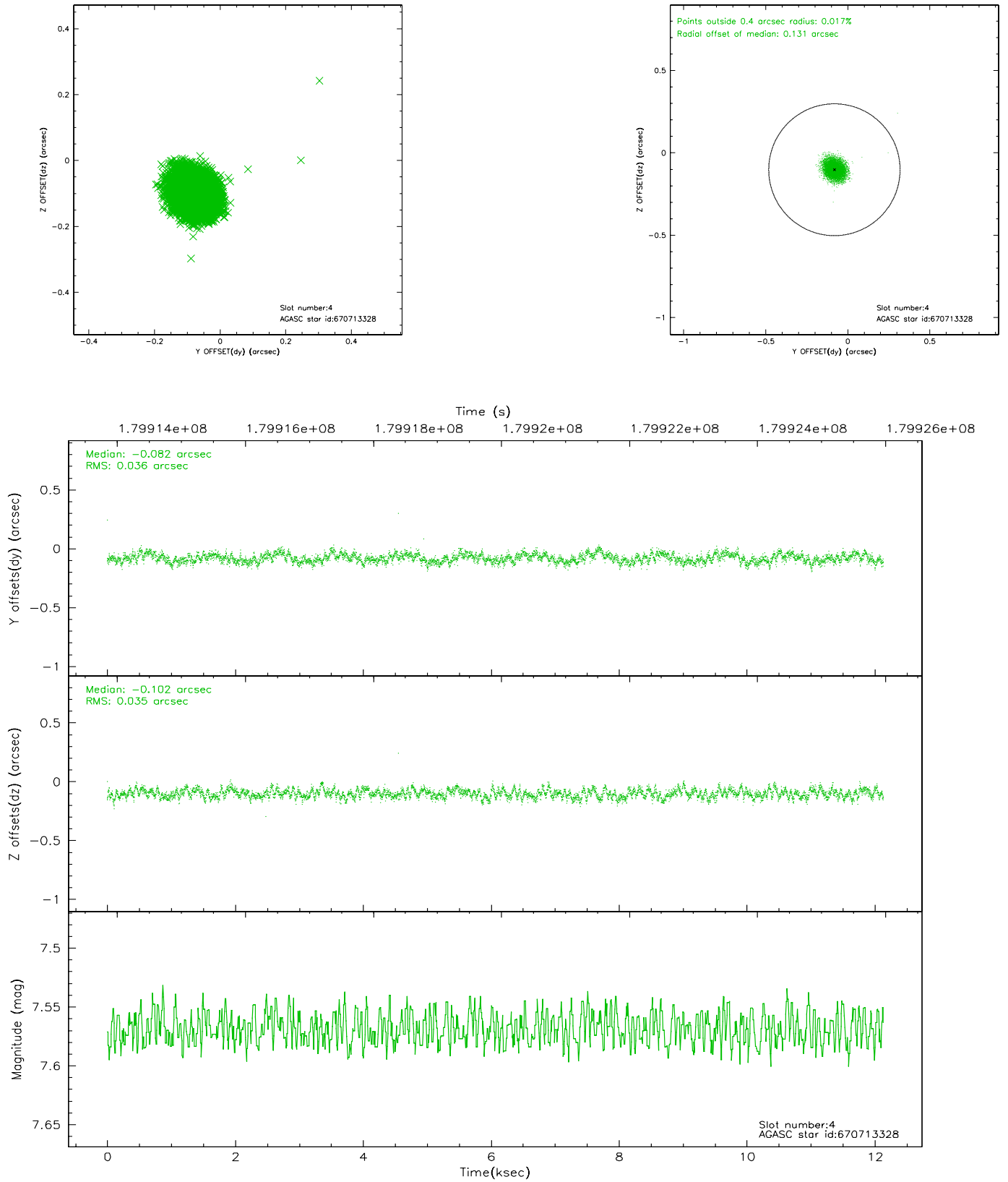
slot	status	id	mag	n_pts	med_dy	med_dz	dr1	dr2	ra	dec	mean_y	mean_z
0	FID	ACIS-S-2	7.10	2961	-0.045	0.009	0.010	0.015	0.000000	0.000000	-759.30	-1731.80
1	FID	ACIS-S-4	7.20	2961	0.024	0.020	0.009	0.015	0.000000	0.000000	2153.83	176.31
2	FID	ACIS-S-5	7.23	2959	-0.009	-0.020	0.006	0.011	0.000000	0.000000	-1811.61	170.35
3	GUIDE	670712896	9.52	5918	0.048	0.060	0.085	0.137	281.136637	-3.286600	1283.52	-212.51
4	GUIDE	670713328	7.57	5920	-0.082	-0.102	0.054	0.084	280.824681	-3.187771	980.58	-1349.38
5	GUIDE	670714008	9.03	5918	0.022	0.054	0.069	0.110	281.129237	-3.153193	804.63	-261.75
6	GUIDE	670830264	8.75	5919	-0.114	-0.032	0.065	0.105	281.361536	-3.231556	1046.99	585.67
7	GUIDE	670713072	9.02	5916	0.123	0.021	0.080	0.128	281.205407	-3.604132	2413.43	88.45

2.4 Star Slots

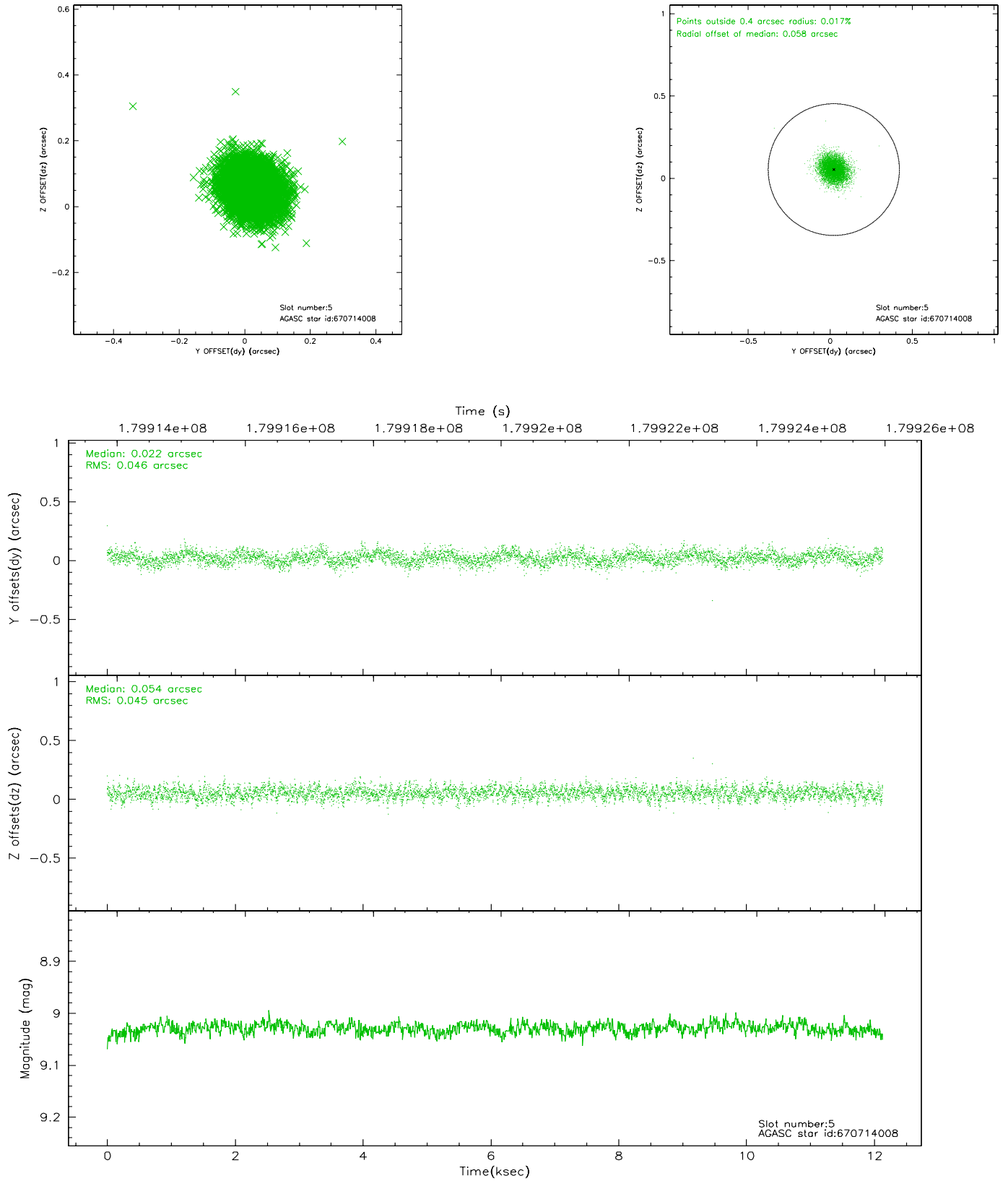
2.4.1 Slot 3



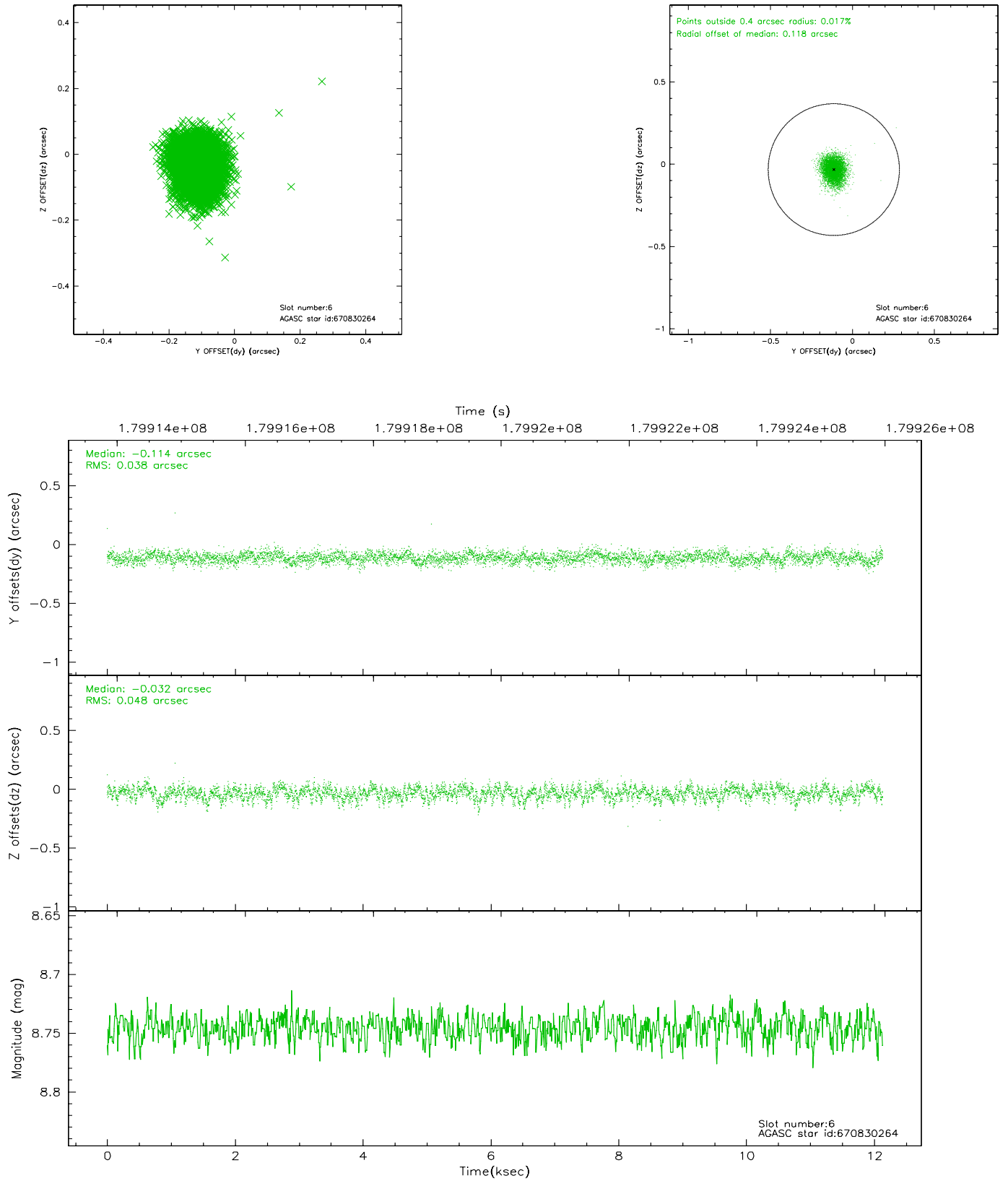
2.4.2 Slot 4



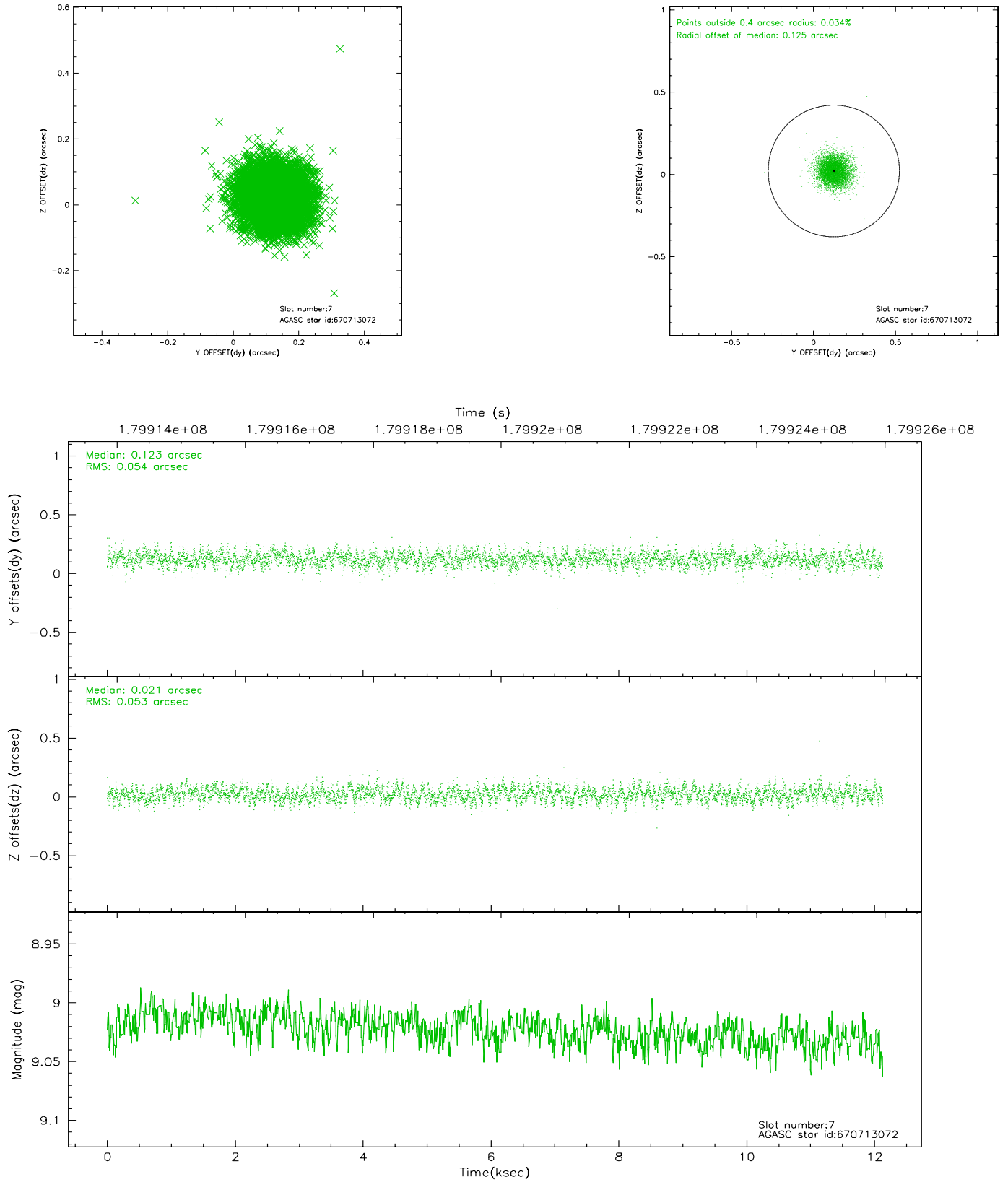
2.4.3 Slot 5



2.4.4 Slot 6

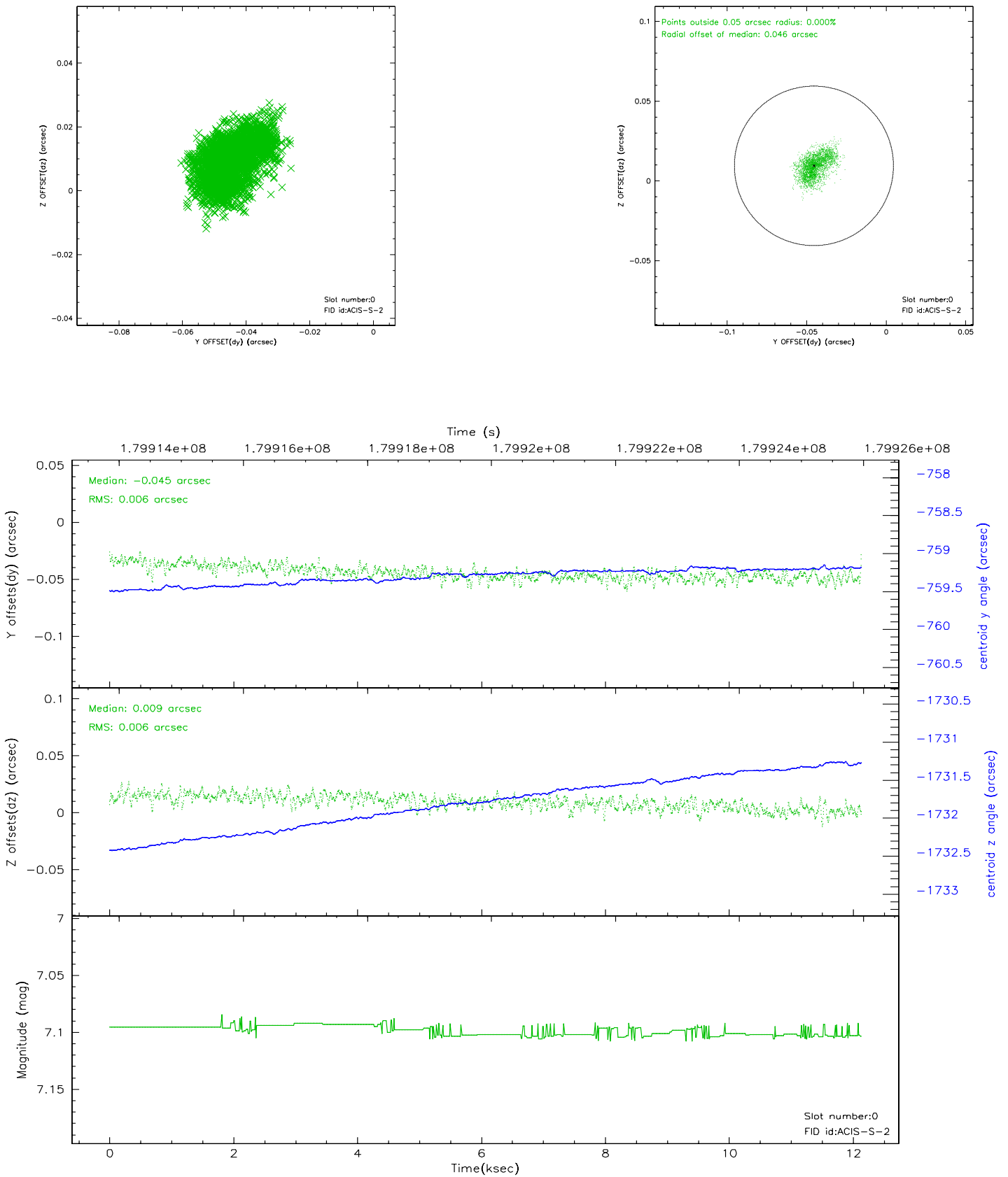


2.4.5 Slot 7

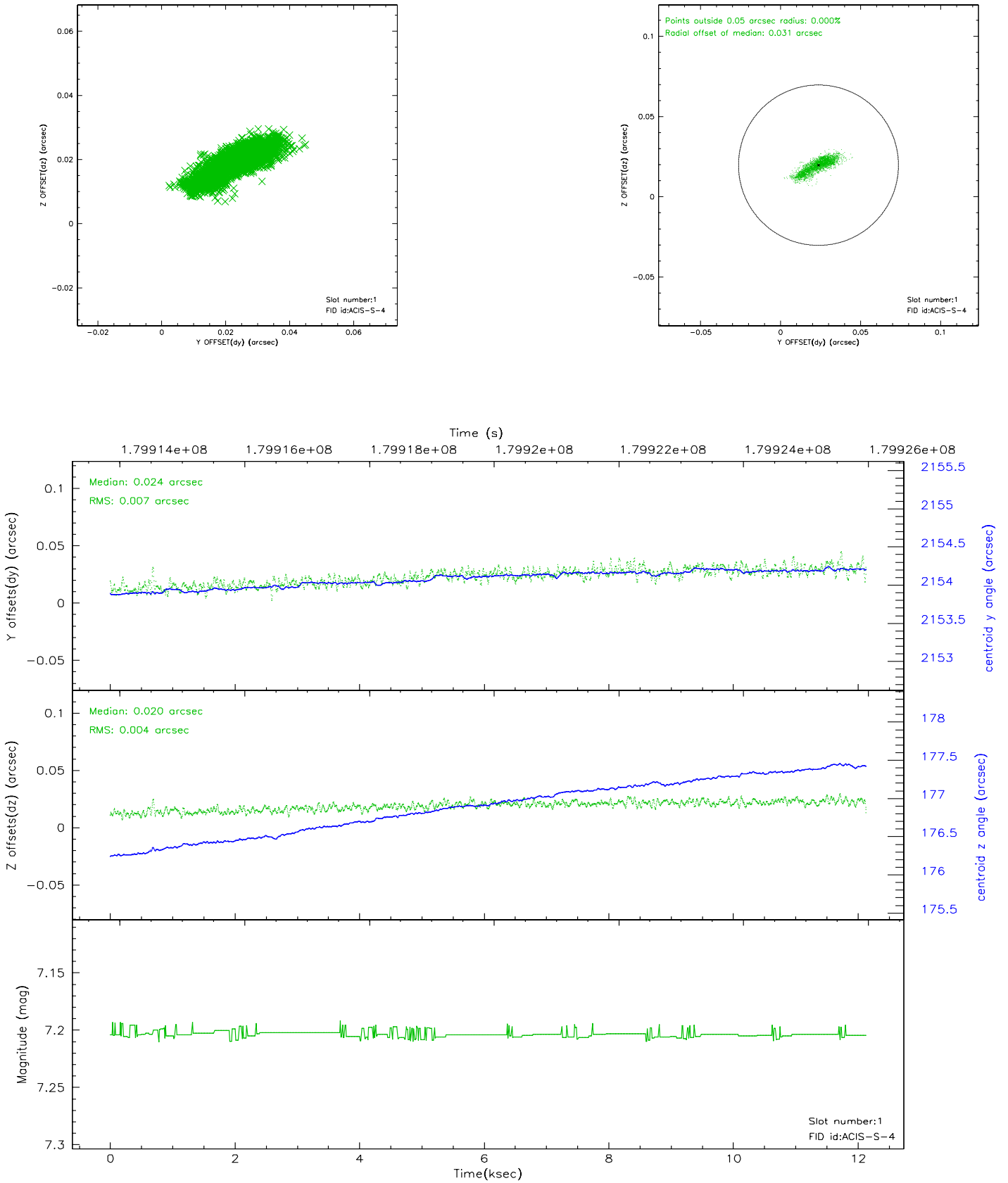


2.5 FID Slots

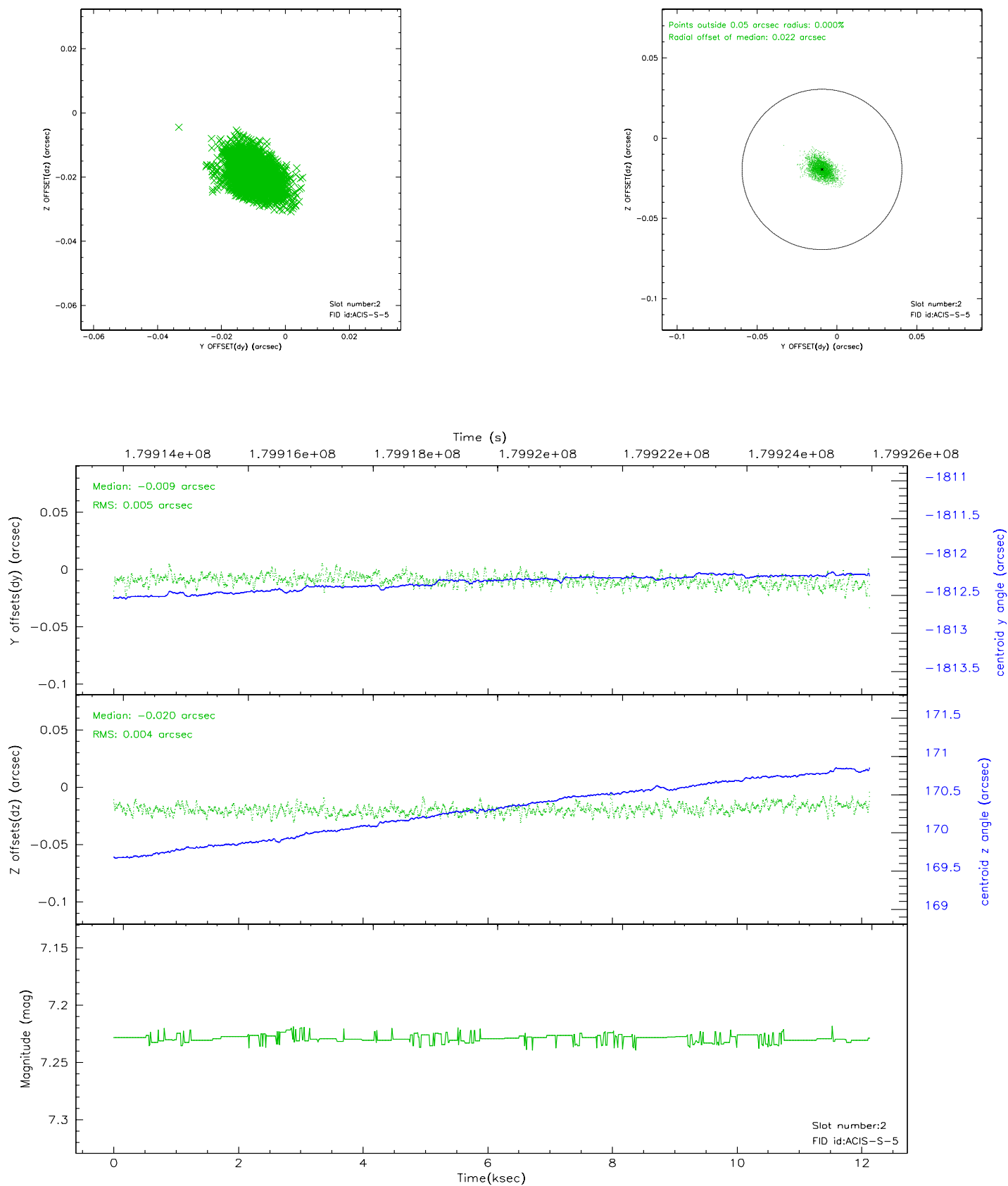
2.5.1 Slot 0



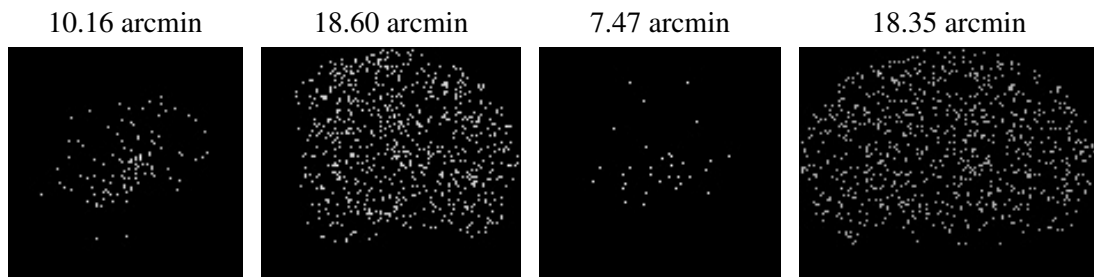
2.5.2 Slot 1



2.5.3 Slot 2



3 Point Sources



A Summary

A.1 Status

V&V Scientist	Beth Sundheim
V&V Date (YYYY-MM-DD)	2006.07.05
V&V Edition	1
V&V Disposition and Status	OK
V&V Charge Time	11.929

A.2 Comments