

V&V Reference Report

L2 ASCDS Version : 8.4.5

Observation 3647 - L2 Version 3
Chandra X-Ray Center

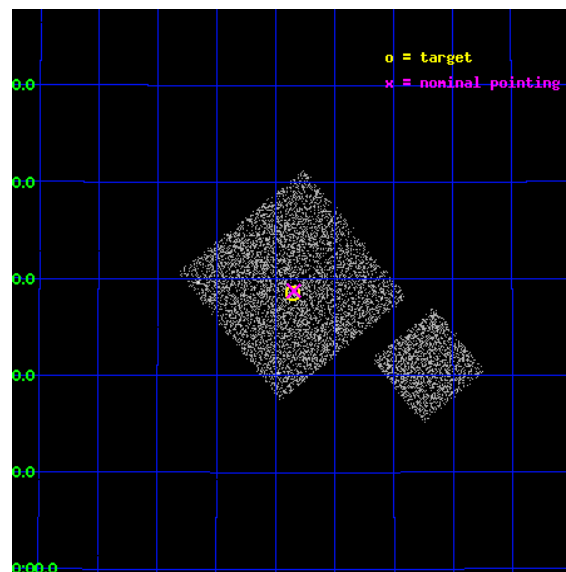
L2 Processing Date : Oct 25 2012

Contents

1	Front	2
2	OBI	3
2.1	OBI	3
2.1.1	Images	3
2.1.2	Bias	3
2.1.3	Parameters	4
2.1.4	Events	4
2.2	Compared Parameters	5
2.3	Aspect	6
2.4	Star Slots	9
2.4.1	Slot 3	9
2.4.2	Slot 4	10
2.4.3	Slot 5	11
2.4.4	Slot 6	12
2.4.5	Slot 7	13
2.5	FID Slots	14
2.5.1	Slot 0	14
2.5.2	Slot 1	15
2.5.3	Slot 2	16
A	Summary	17
A.1	Status	17
A.2	Comments	17

1 Front

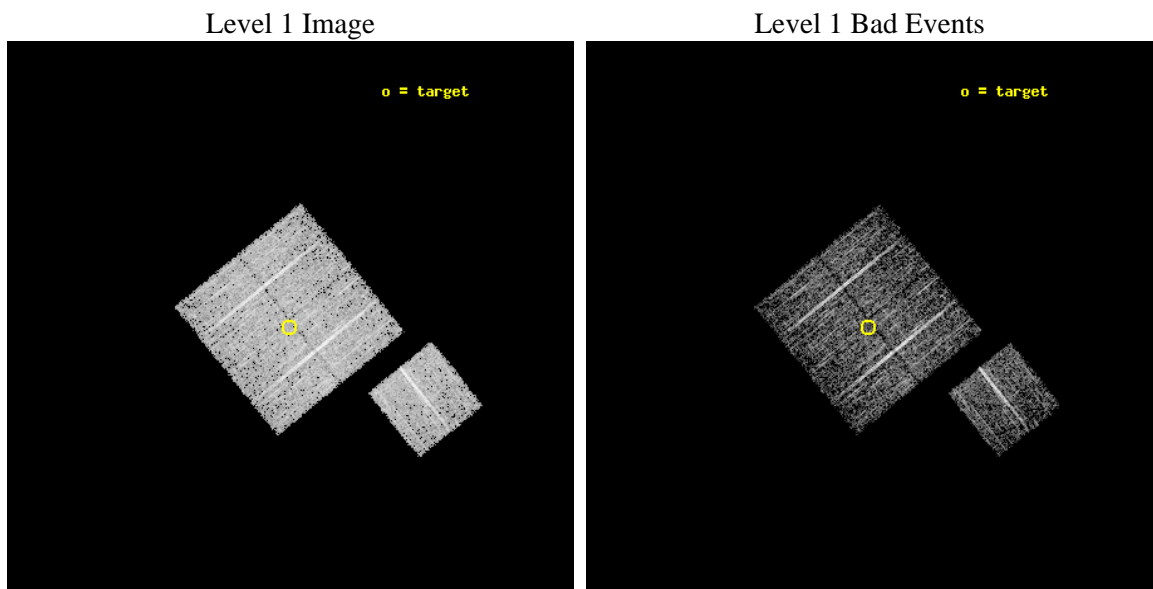
seq_num	900247	Sequence number
obs_id	3647	Observation id
title	CHANDRA LARGE SCALE SURVEY OF THE NOAO BOOTES DEEP FIELD	Proposal
observer	Dr. Stephen Murray	Principal investigator
object	NOAO FIELD F53	Source name
dtcycle	0	
cycle	P	events from which exps? Prim/Second/Both
ra_targ	218.463931	Observer's specified target RA [deg]
dec_targ	34.475388	Observer's specified target Dec [deg]
ra_nom	218.46130058261	Nominal RA [deg]
dec_nom	34.479501896648	Nominal Dec [deg]
roll_nom	141.01005733529	Nominal Roll [deg]
revision	3	Processing version of data
ontime	4674.099738121	Sum of GTIs [s]
livetime	4613.0291840203	Livetime [s]
ontime0	4673.9765982032	Sum of GTIs [s]
ontime1	4670.8766480386	Sum of GTIs [s]
ontime2	4674.0586981177	Sum of GTIs [s]
ontime3	4674.099738121	Sum of GTIs [s]
ontime6	4673.9355581999	Sum of GTIs [s]
l2events	9441	Number of level 2 events



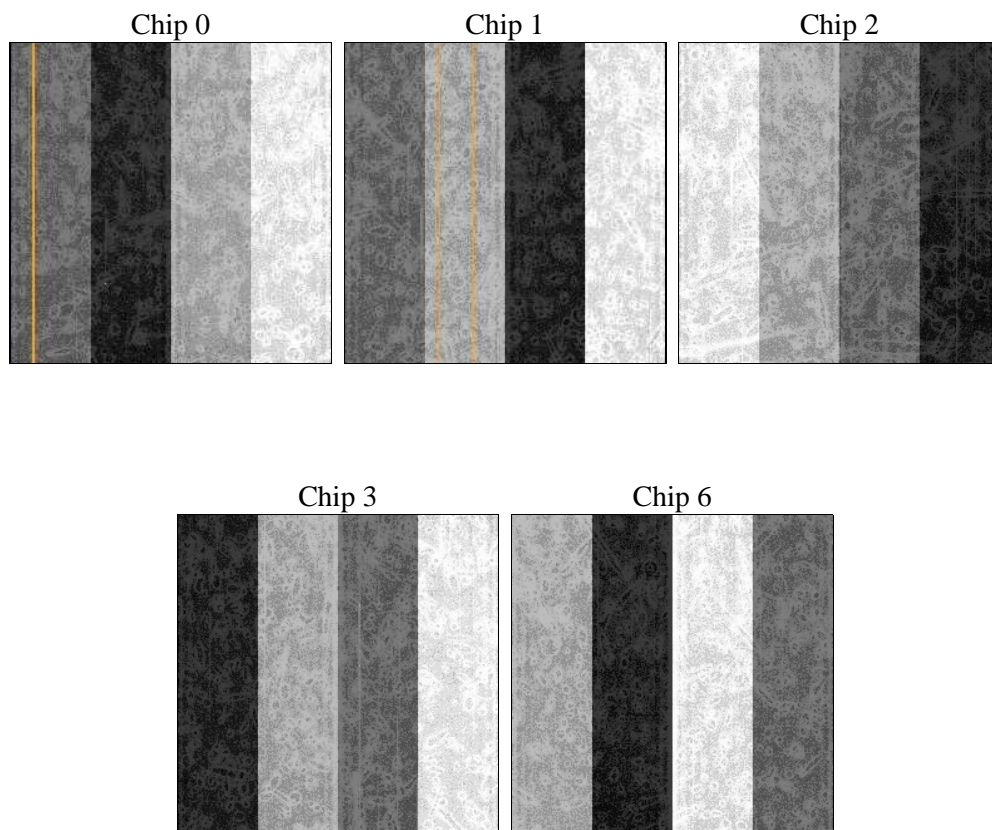
2 OBI

2.1 OBI

2.1.1 Images



2.1.2 Bias



2.1.3 Parameters

obi_num	1	Obi number	sched_exp_time	4900.000000	[s] Scheduled observation exposure time
ascdsver	8.4.5	Processing system revision	ontime	4674.099738121	Sum of GTIs [s]
caldsver	4.5.2	 	ontime0	4673.9765982032	Sum of GTIs [s]
date	2012-10-25T23:38:13	Date and time of file creation	ontime1	4670.8766480386	Sum of GTIs [s]
revision	3	Processing version of data	ontime2	4674.0586981177	Sum of GTIs [s]
			ontime3	4674.099738121	Sum of GTIs [s]
			ontime6	4673.9355581999	Sum of GTIs [s]
			l1events	116338	Number of level 1 events

2.1.4 Events

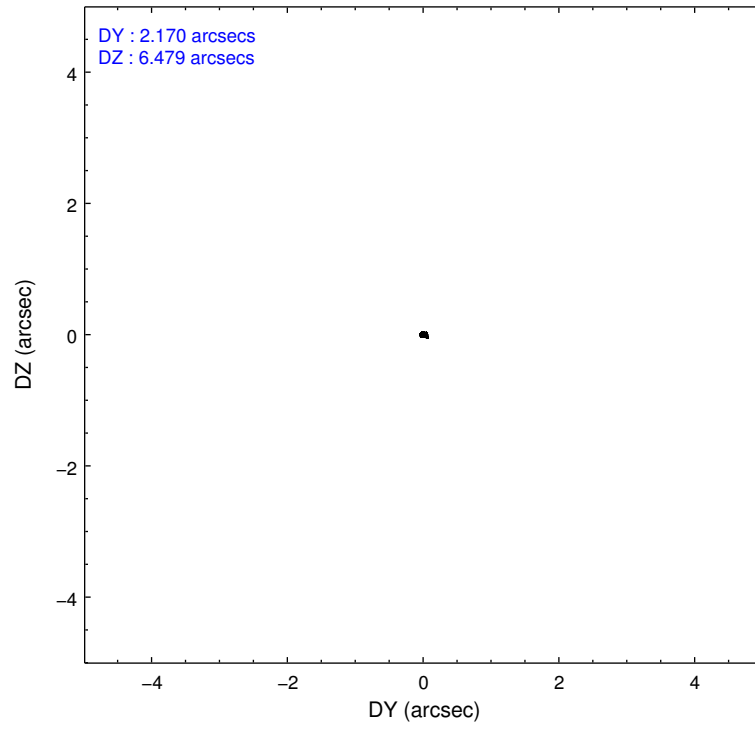
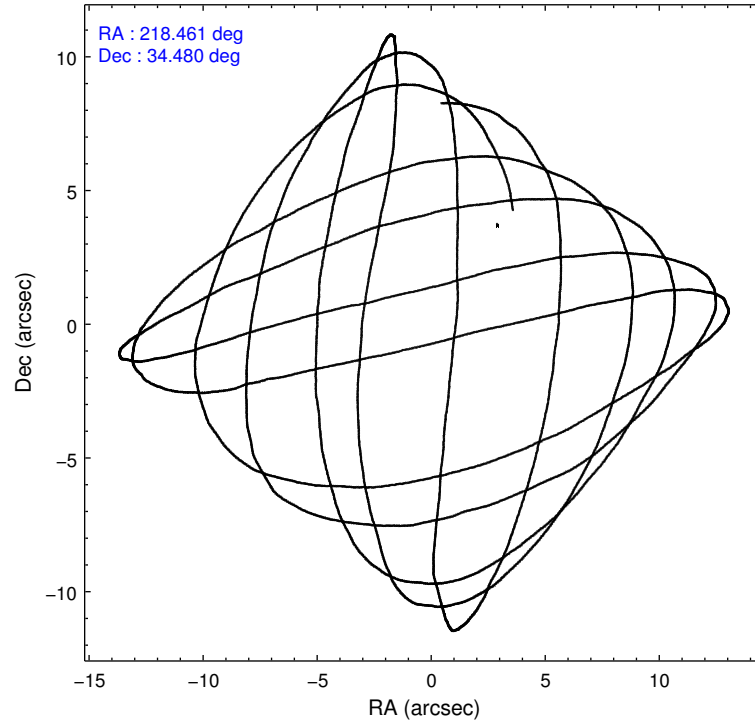
	ccd 0	ccd 1	ccd 2	ccd 3	ccd 6
level 1 events	22284	23199	24762	23130	22963
rejected events	20027	20726	22462	20972	20539
rejected %	89%	89%	90%	90%	89%

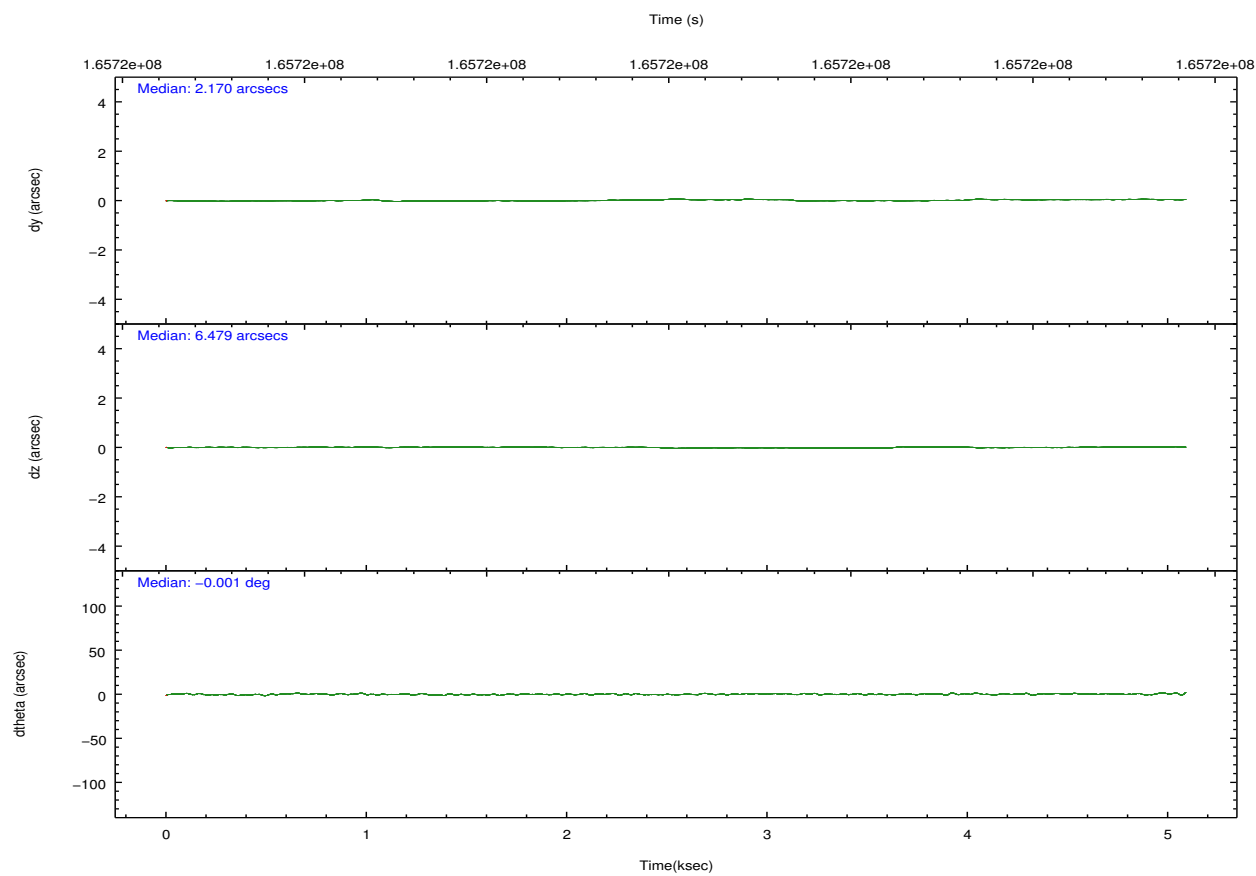
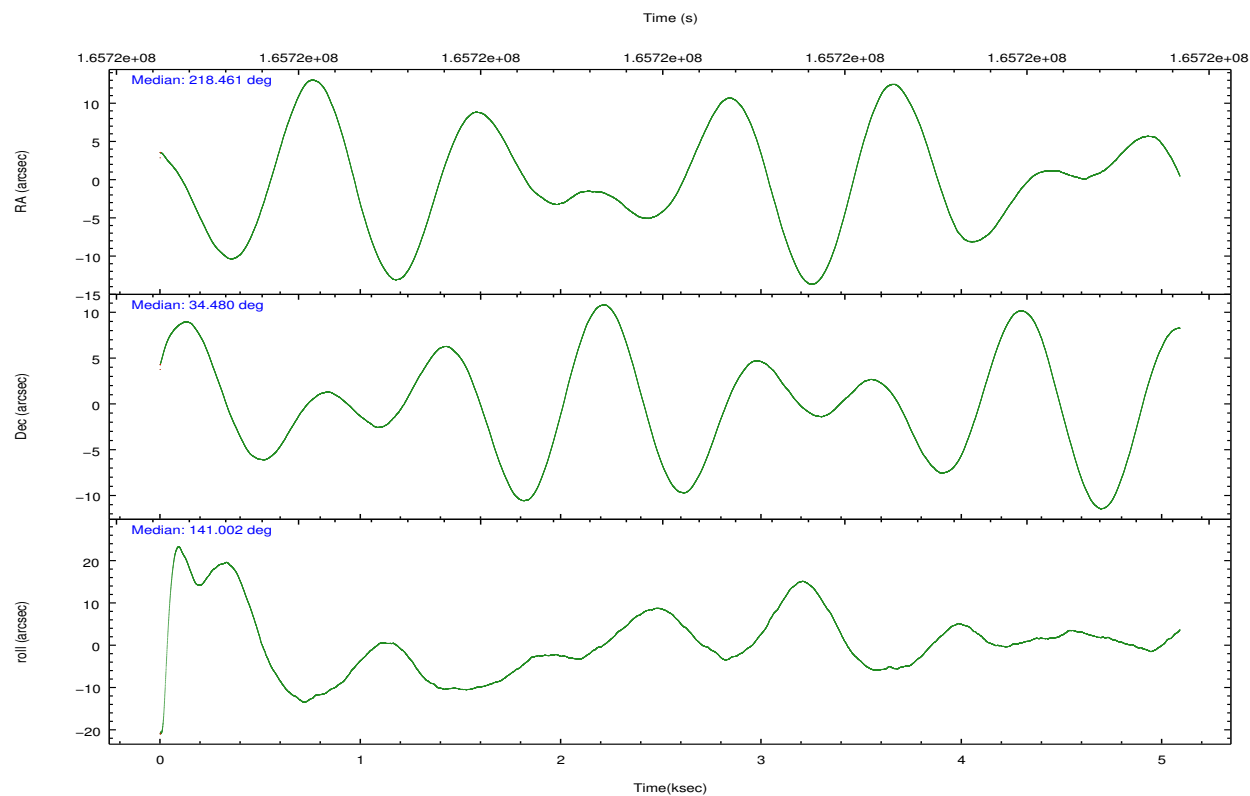
	ccd 0	ccd 1	ccd 2	ccd 3	ccd 6
grade 0 events	769	868	822	853	902
	3%	3%	3%	3%	3%
grade 1 events	14	7	5	14	10
	0%	0%	0%	0%	0%
grade 2 events	541	535	575	438	505
	2%	2%	2%	1%	2%
grade 3 events	266	296	249	266	276
	1%	1%	1%	1%	1%
grade 4 events	255	285	260	231	273
	1%	1%	1%	0%	1%
grade 5 events	712	780	647	794	765
	3%	3%	2%	3%	3%
grade 6 events	429	491	396	377	471
	1%	2%	1%	1%	2%
grade 7 events	19298	19937	21808	20157	19761
	86%	85%	88%	87%	86%

2.2 Compared Parameters

Parameter	Planned	Actual	Parameter	Planned	Actual
Instrument	ACIS	ACIS	Obspar format version number	7	7
Detector	ACIS-01236	ACIS-01236	Obspar file type	PREDICTED	ACTUAL
Grating	NONE	NONE	Obspar update status	NONE	UPDATED
Data mode	VFAINT	VFAINT	Number of optional ACIS chips dropped	0	0
Observation mode	POINTING	POINTING	On-chip summing requested	N	N
[deg] Pointing RA	218.494122	218.4613005826096	Subarray requested	NONE	NONE
[deg] Pointing Dec	34.475308	34.47950189664849	Alternating exposures requested	N	N
[deg] Pointing Roll	140.782906	141.0100573352894	[s] Primary exposure time	0.000000	3.1
[mm] SIM focus pos	-0.782348	-0.7809083437167272			
[mm] SIM defocus	0	0.001439871863259334			
[mm] SIM translation stage pos	-233.592463	-233.5874344608287			
[mm] SIM translation stage offset	0	-0.005018542100998502			
[s] Observation start time (MET)	165716687.184000	165716311.23868			
Observation start date	2003-04-03T00:23:43	2003-04-03T00:18:31			
[s] Observation end time (MET)	165721587.184000	165721721.7014			
Observation end date	2003-04-03T01:45:23	2003-04-03T01:48:41			
Read mode	TIMED	TIMED			

2.3 Aspect



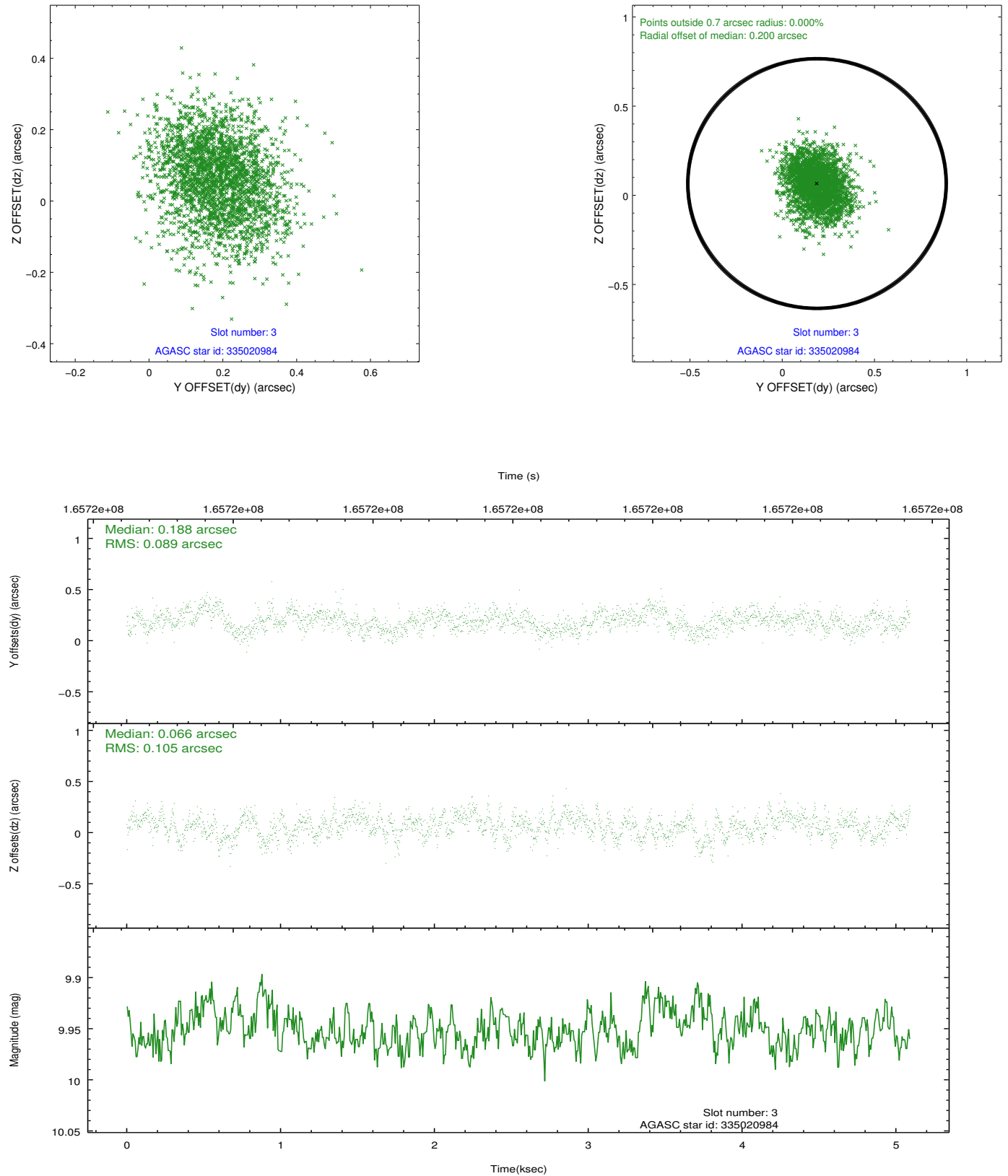


Slot Statistics

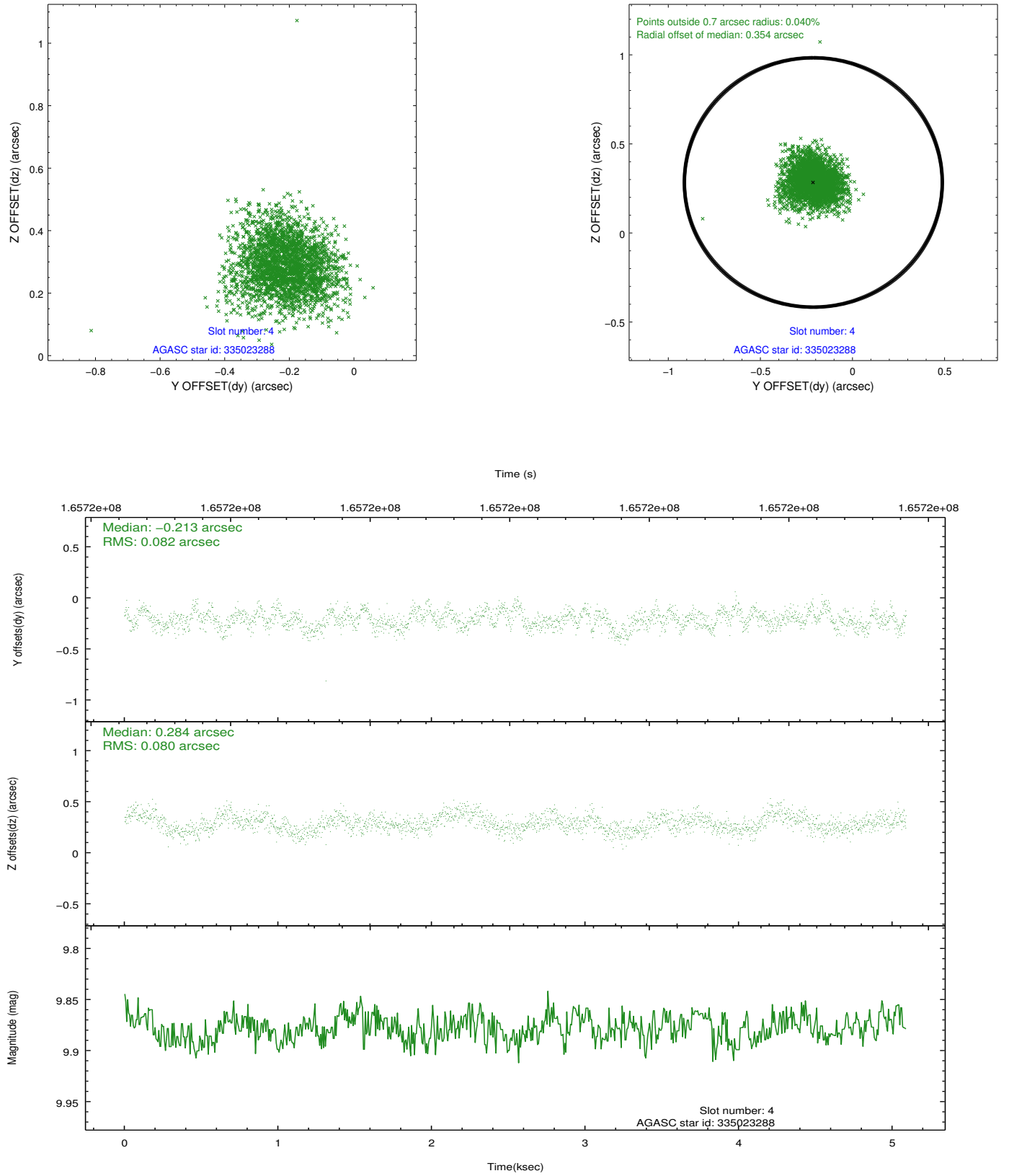
slot	status	id	mag	n_pts	med_dy	med_dz	dr1	dr2	ra	dec	mean_y	mean_z
0	FID	ACIS-I-1	7.25	1242	-0.043	-0.041	0.007	0.013	0.000000	0.000000	937.59	-829.90
1	FID	ACIS-I-4	7.18	1242	0.041	0.073	0.007	0.012	0.000000	0.000000	2158.40	1069.41
2	FID	ACIS-I-5	7.23	1242	-0.097	0.039	0.007	0.012	0.000000	0.000000	-1808.91	1068.62
3	GUIDE	335020984	9.95	2478	0.188	0.066	0.145	0.236	218.841668	33.815112	-2306.50	1182.83
4	GUIDE	335023288	9.88	2479	-0.213	0.284	0.120	0.195	217.791365	34.425735	1507.20	1453.50
5	GUIDE	335023304	8.41	2484	-0.132	-0.088	0.066	0.113	218.883608	34.686545	-410.39	-1318.99
6	GUIDE	335025040	9.89	2479	-0.004	-0.088	0.196	0.329	218.601670	34.305240	-634.98	271.72
7	GUIDE	335026200	10.71	2437	0.157	-0.172	0.183	0.297	218.096425	34.160577	202.63	1625.36

2.4 Star Slots

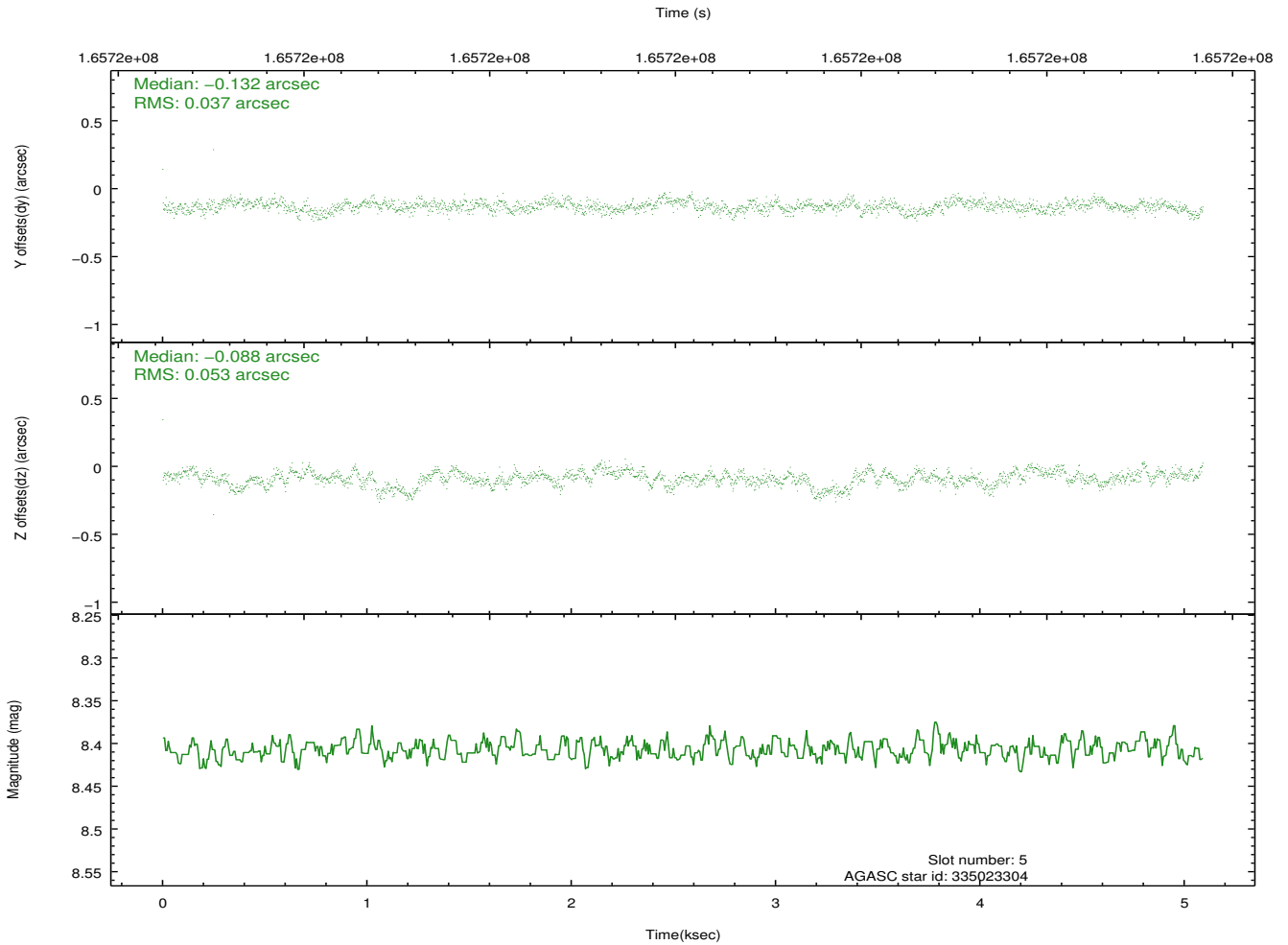
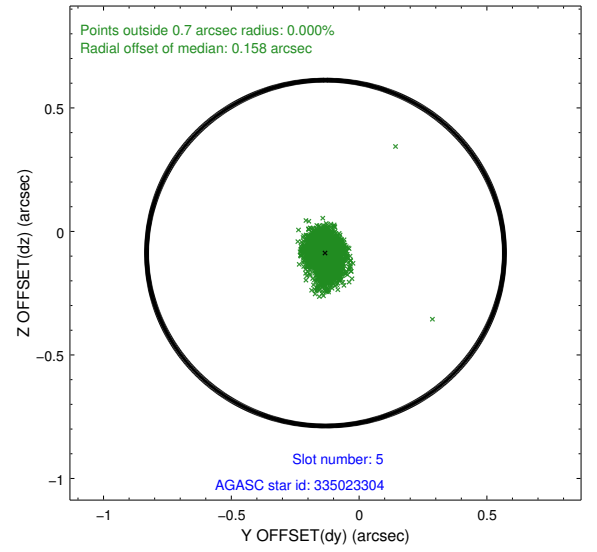
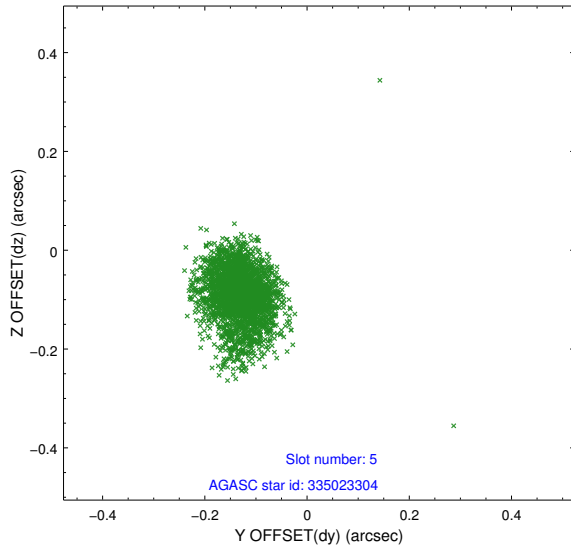
2.4.1 Slot 3



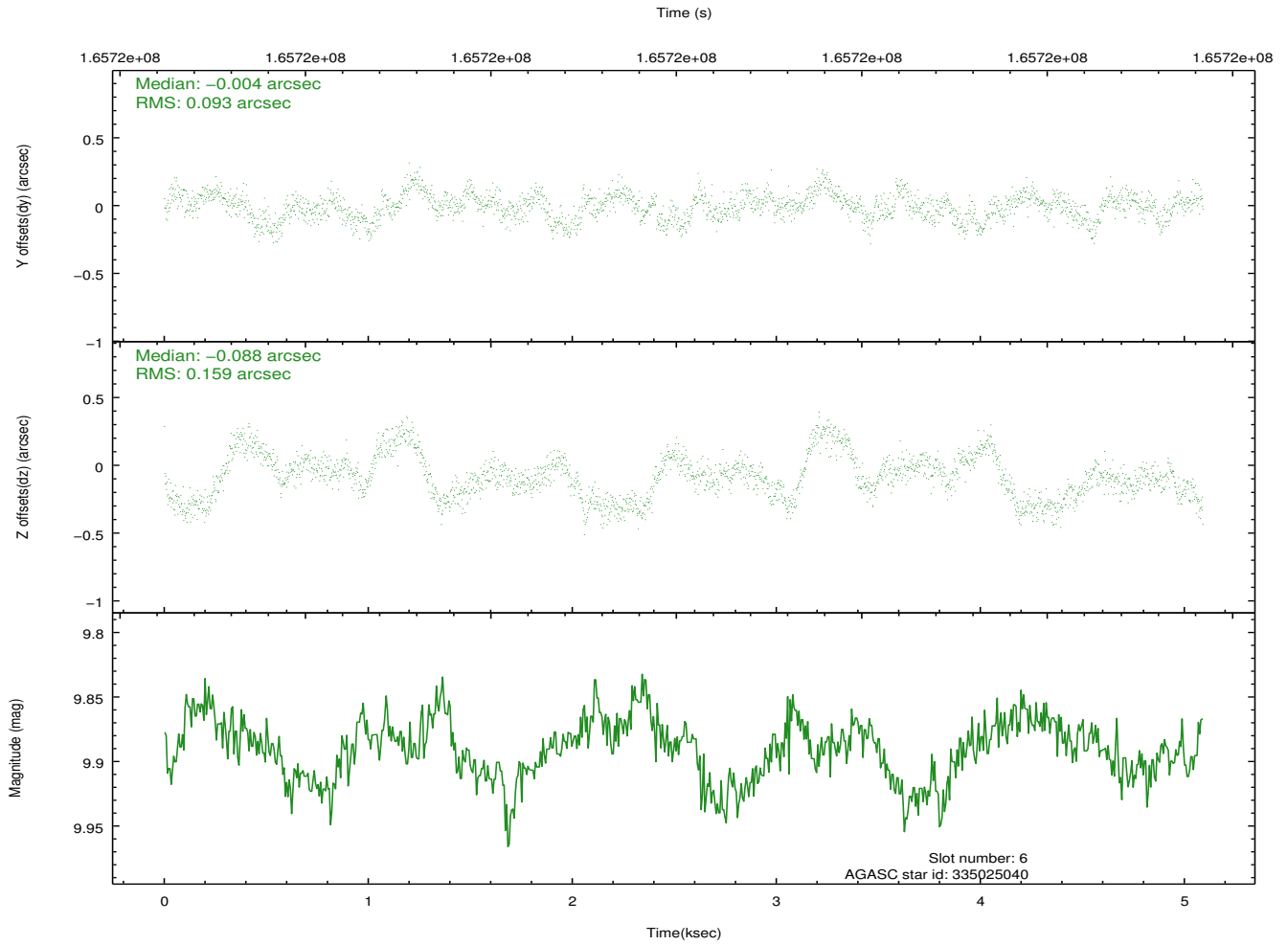
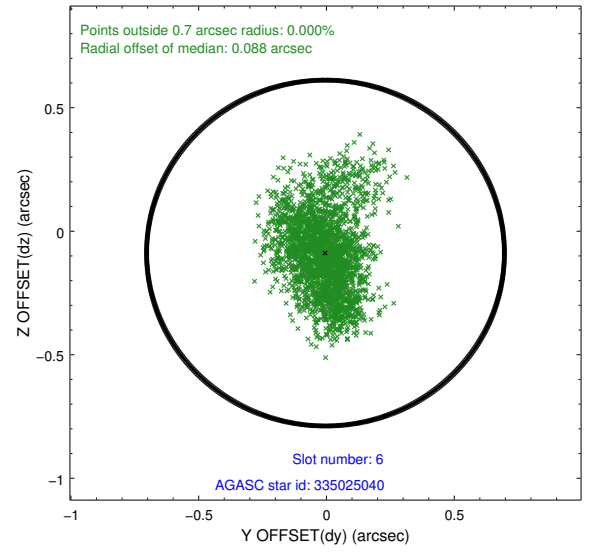
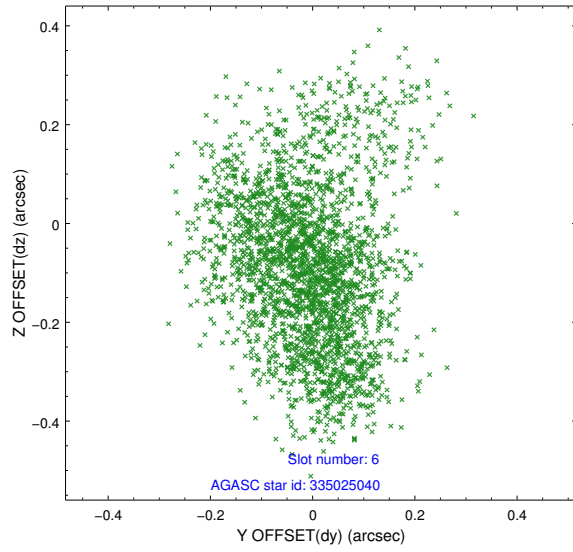
2.4.2 Slot 4



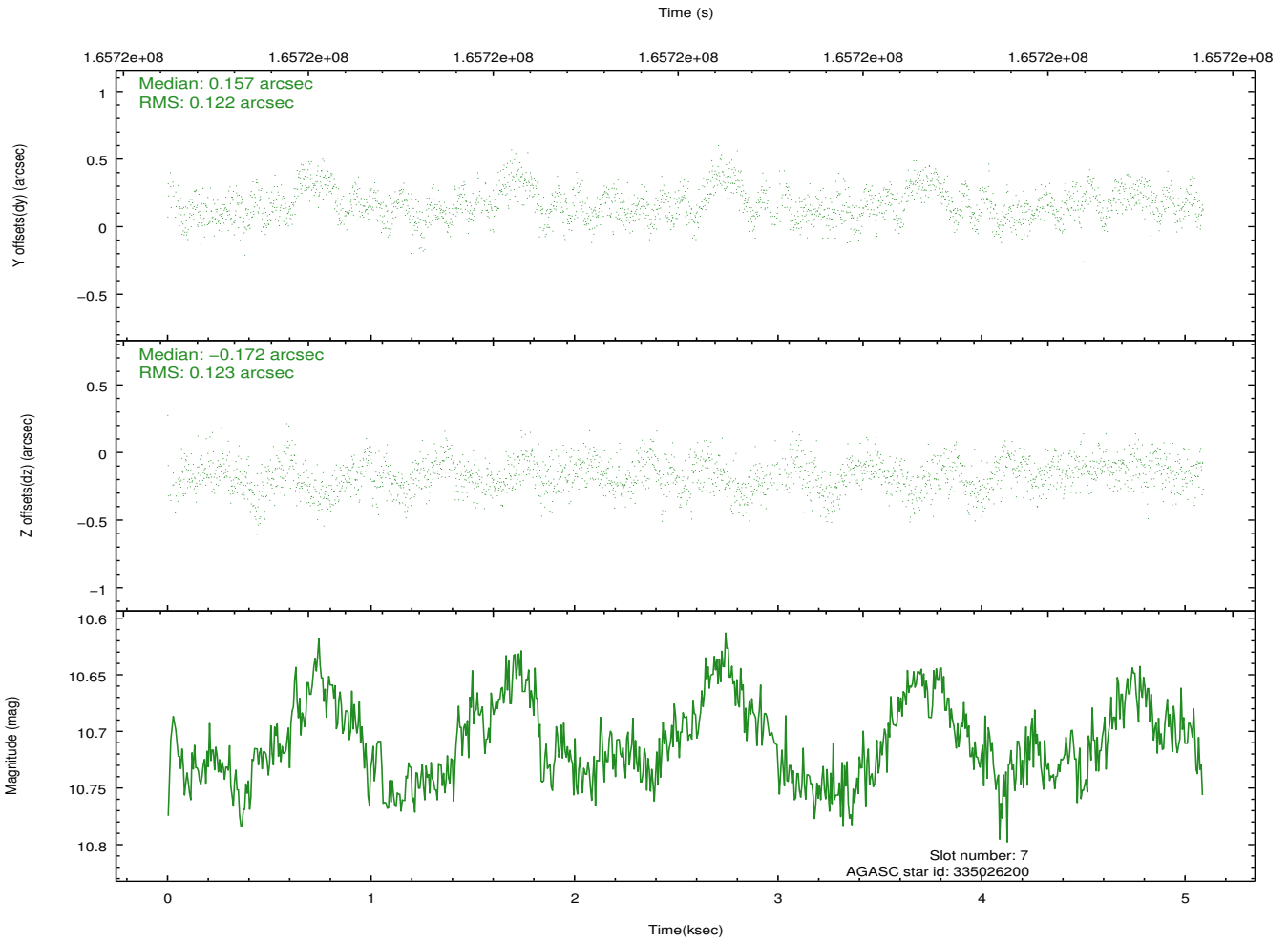
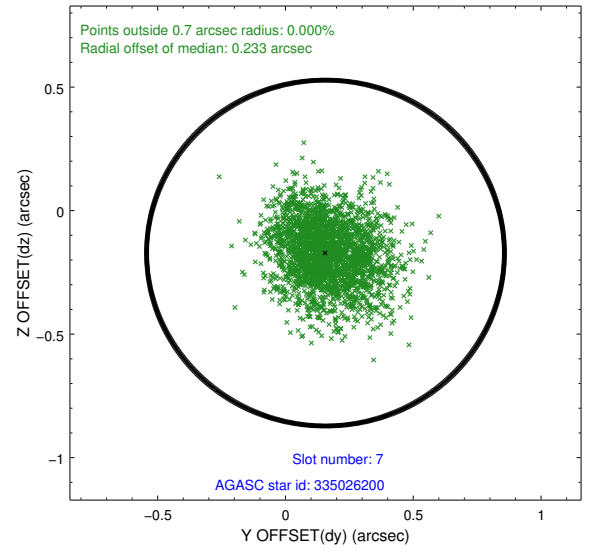
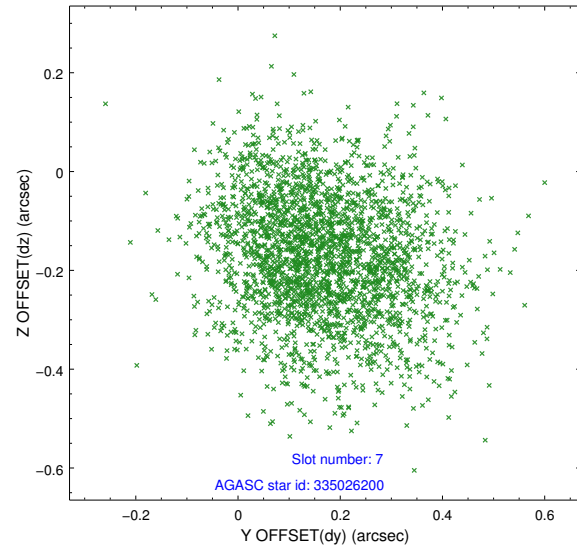
2.4.3 Slot 5



2.4.4 Slot 6

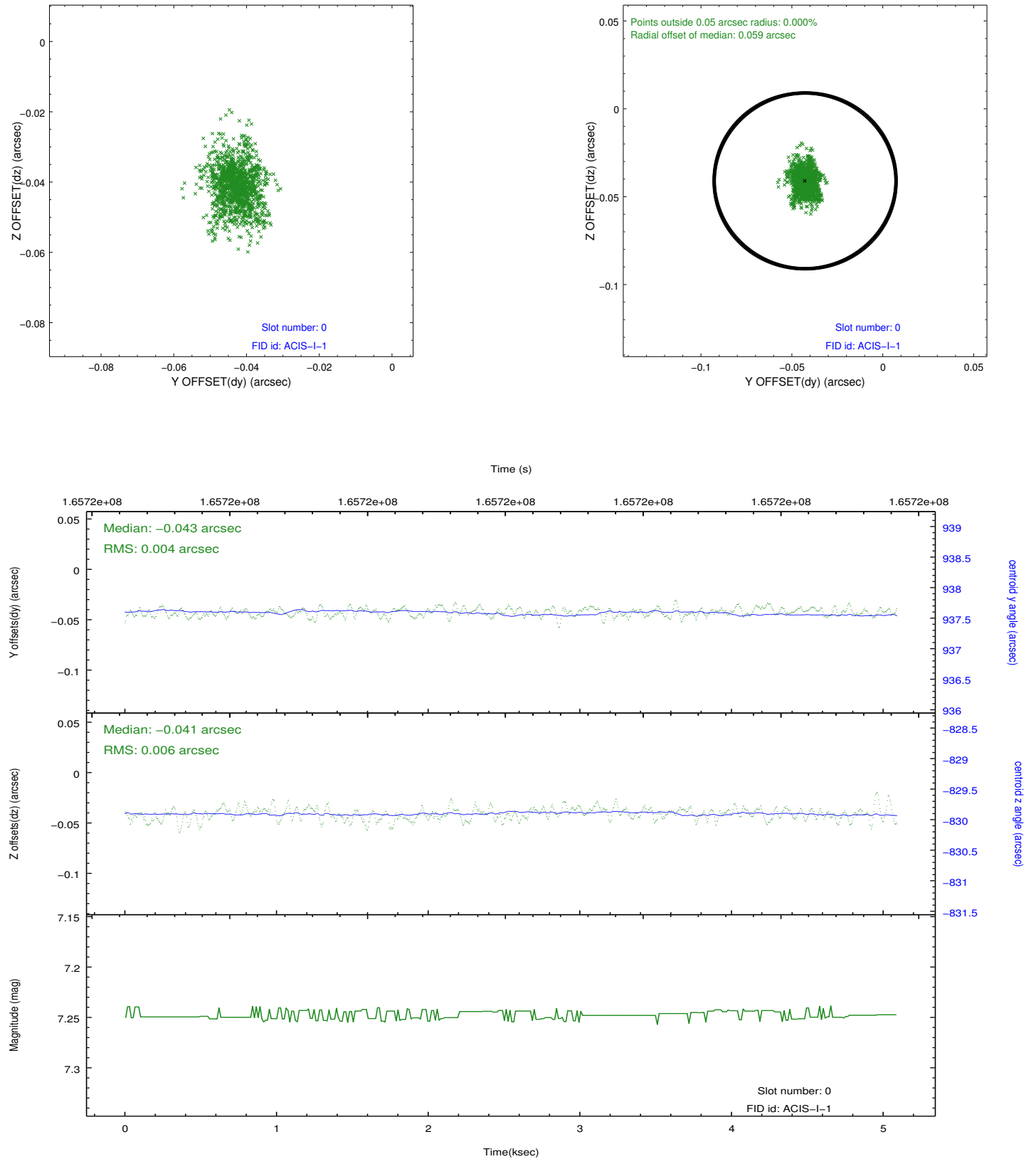


2.4.5 Slot 7

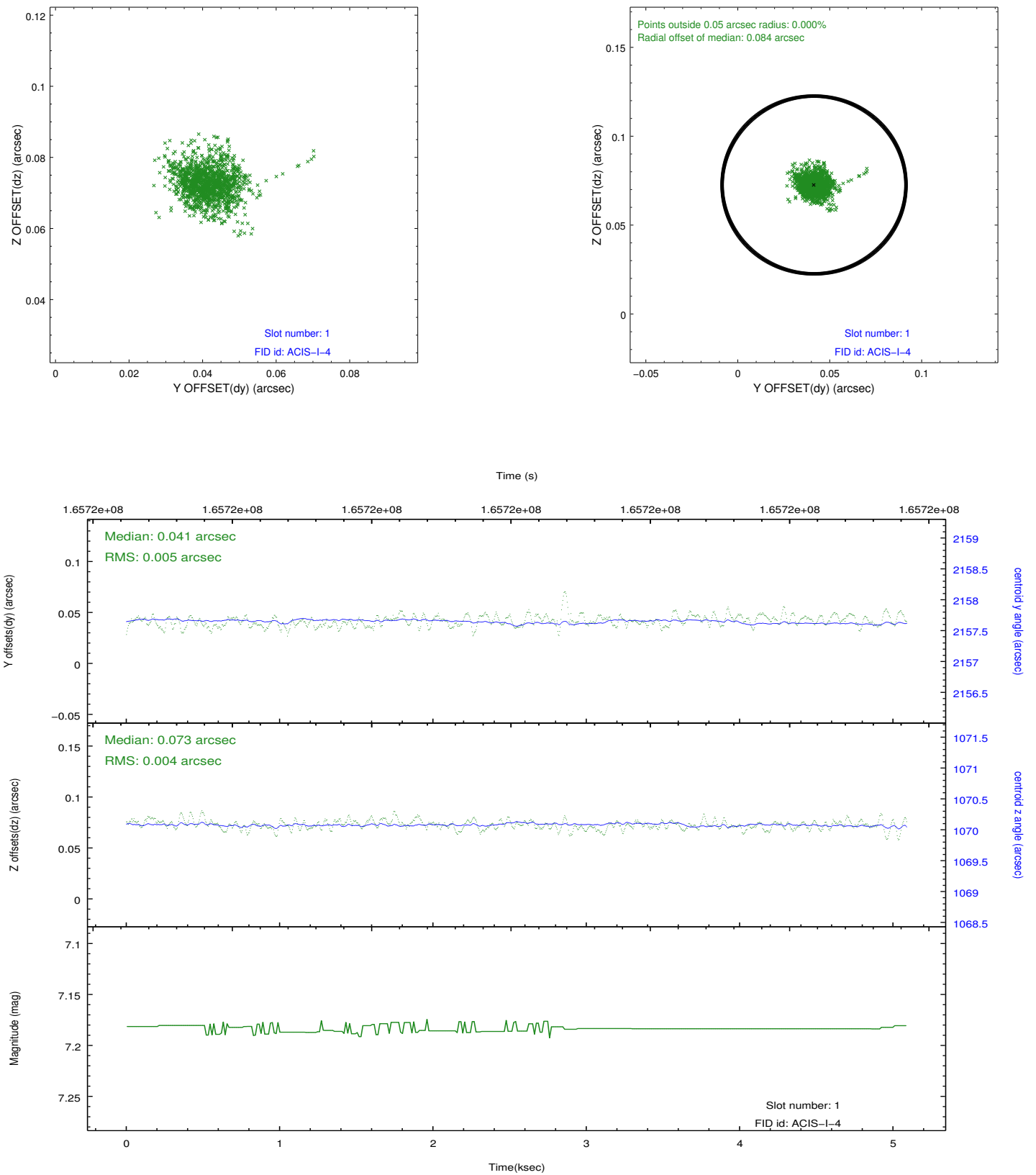


2.5 FID Slots

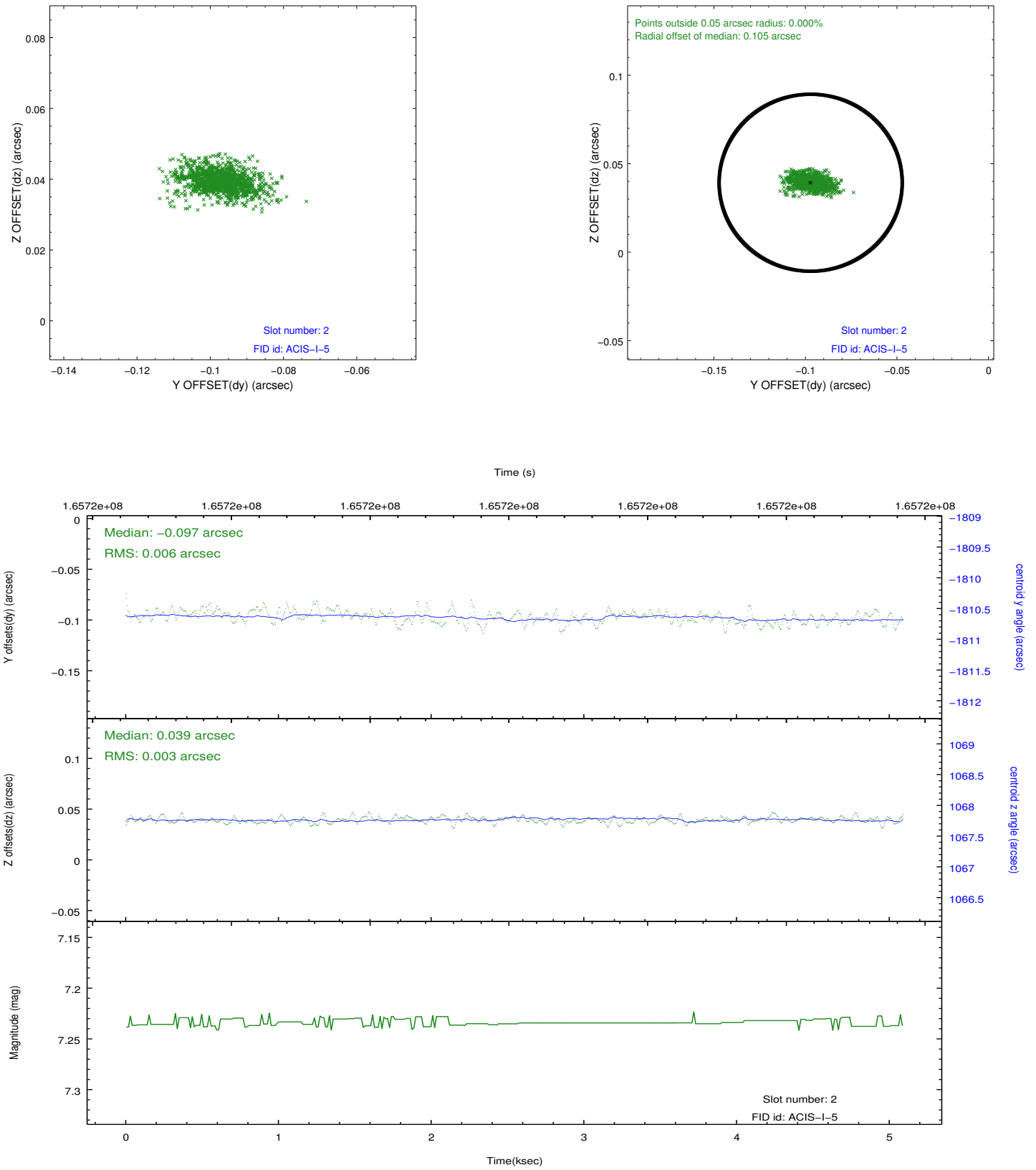
2.5.1 Slot 0



2.5.2 Slot 1



2.5.3 Slot 2



A Summary

A.1 Status

V&V Scientist	Jen Lauer
V&V Date (YYYY-MM-DD)	2012.11.13
V&V Edition	1
V&V Disposition and Status	OK
V&V Charge Time	4.675

A.2 Comments