

V&V Reference Report

L2 ASCDS Version : 7.6.8

Observation 3637 - L2 Version 001
Chandra X-Ray Center

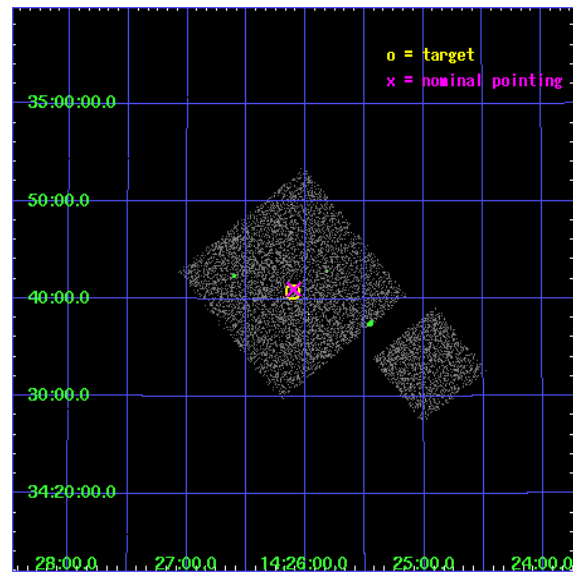
L2 Processing Date : Jul 29 2006

Contents

1	Front	2
2	OBI	3
2.1	OBI	3
2.1.1	Images	3
2.1.2	Bias	3
2.1.3	Parameters	4
2.1.4	Events	4
2.2	Compared Parameters	5
2.3	Aspect	6
2.4	Star Slots	9
2.4.1	Slot 3	9
2.4.2	Slot 4	10
2.4.3	Slot 5	11
2.4.4	Slot 6	12
2.4.5	Slot 7	13
2.5	FID Slots	14
2.5.1	Slot 0	14
2.5.2	Slot 1	15
2.5.3	Slot 2	16
3	Point Sources	17
A	Summary	18
A.1	Status	18
A.2	Comments	18

1 Front

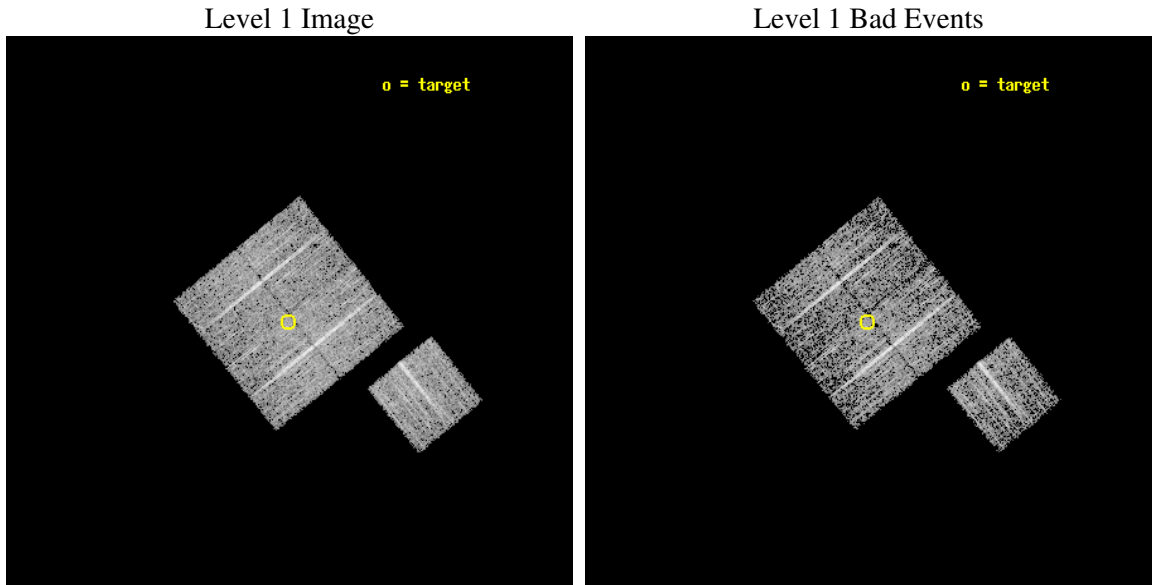
seq_num	900237
obs_id	3637
title	CHANDRA LARGE SCALE SURVEY OF THE NOAO BOOTES DEEP FIELD
observer	Dr. Stephen Murray
object	NOAO FIELD F8
dtcycle	0
cycle	P
ra_targ	216.527246
dec_targ	34.679082
ra_nom	216.52453576932
dec_nom	34.683087358846
roll_nom	141.01024404692
revision	2
ontime	4777.0999908149
livetime	4714.6836625851
ontime0	4777.0999908149
ontime1	4777.0999908149
ontime2	4777.0999908149
ontime3	4777.0999908149
ontime6	4777.0999908149
l2events	9267



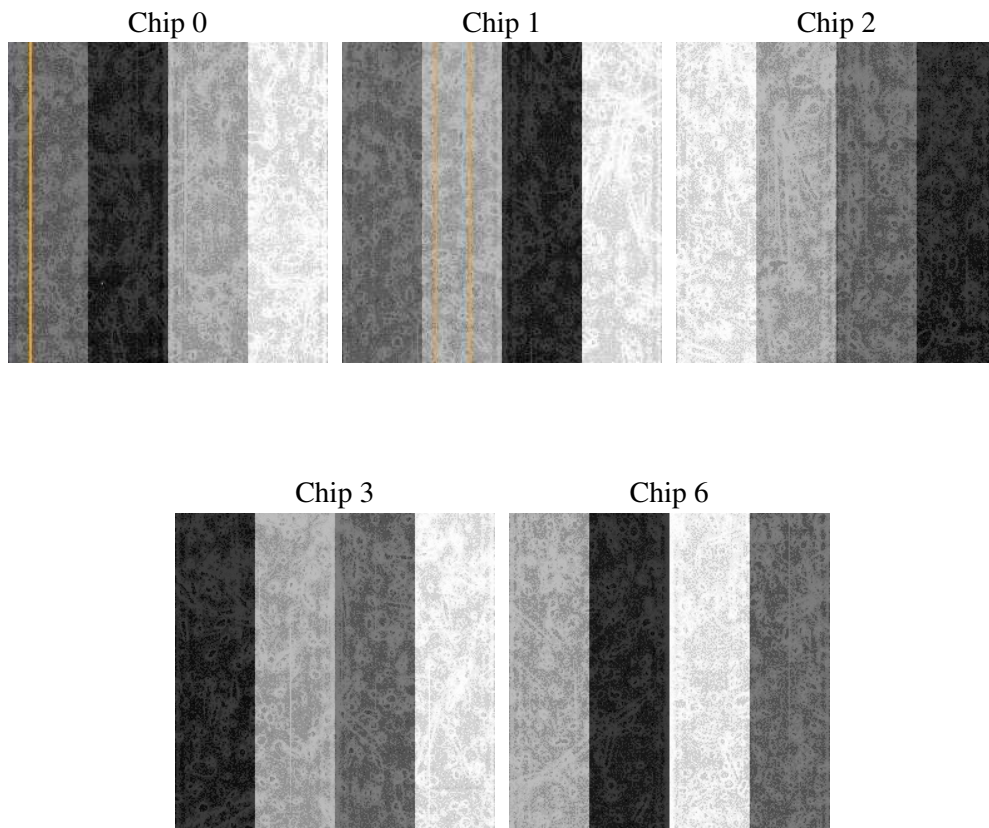
2 OBI

2.1 OBI

2.1.1 Images



2.1.2 Bias



2.1.3 Parameters

obi_num	0
ascdsver	7.6.8
caldsver	3.2.2
date	2006-07-29T16:20:40
revision	2

sched_exp_time	5000.000000
ontime	4780.6225414276
ontime0	4780.6225414276
ontime1	4780.6225414276
ontime2	4780.6225414276
ontime3	4780.6225414276
ontime6	4780.6225414276
llevents	120099

2.1.4 Events

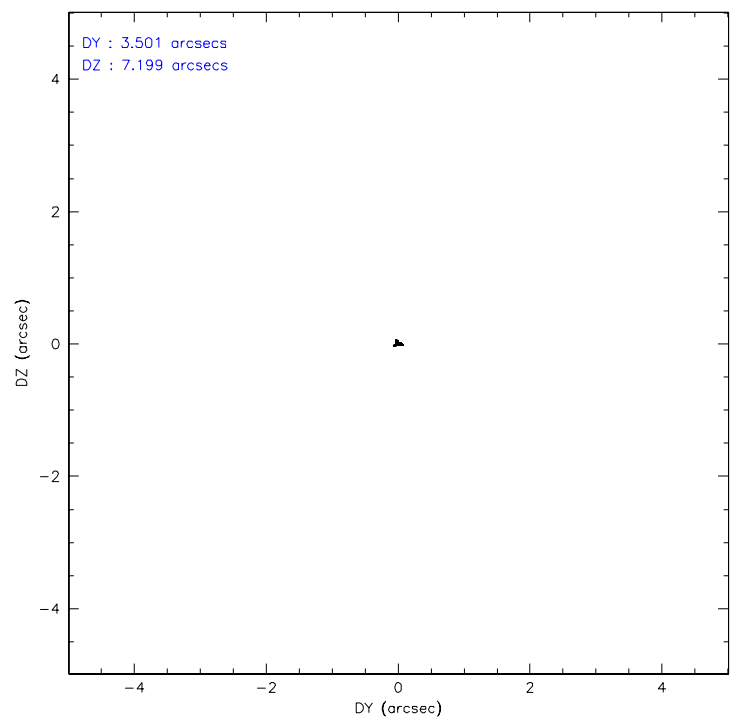
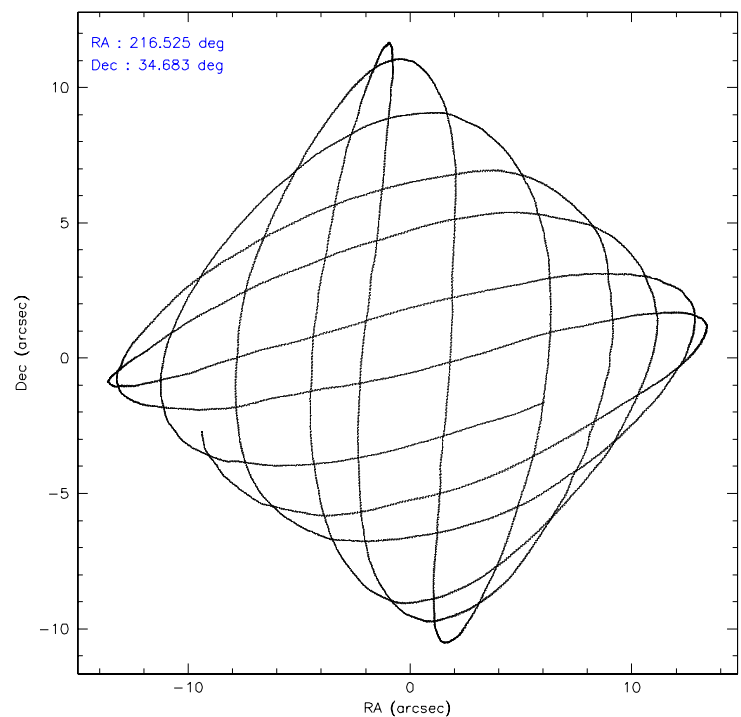
	ccd 0	ccd 1	ccd 2	ccd 3	ccd 6
level 1 events	22621	21713	26043	25213	24509
rejected events	20355	19296	23713	23045	22257
rejected %	89%	88%	91%	91%	90%

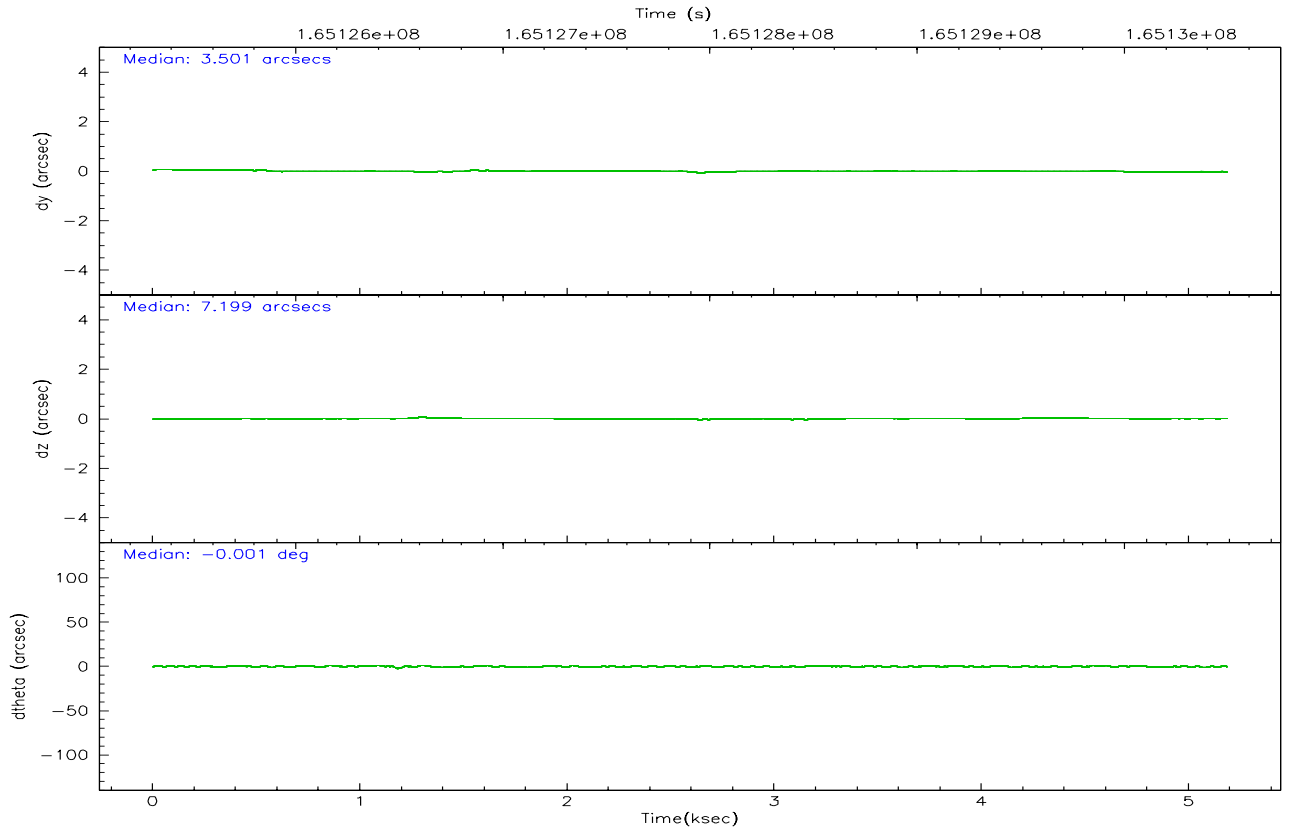
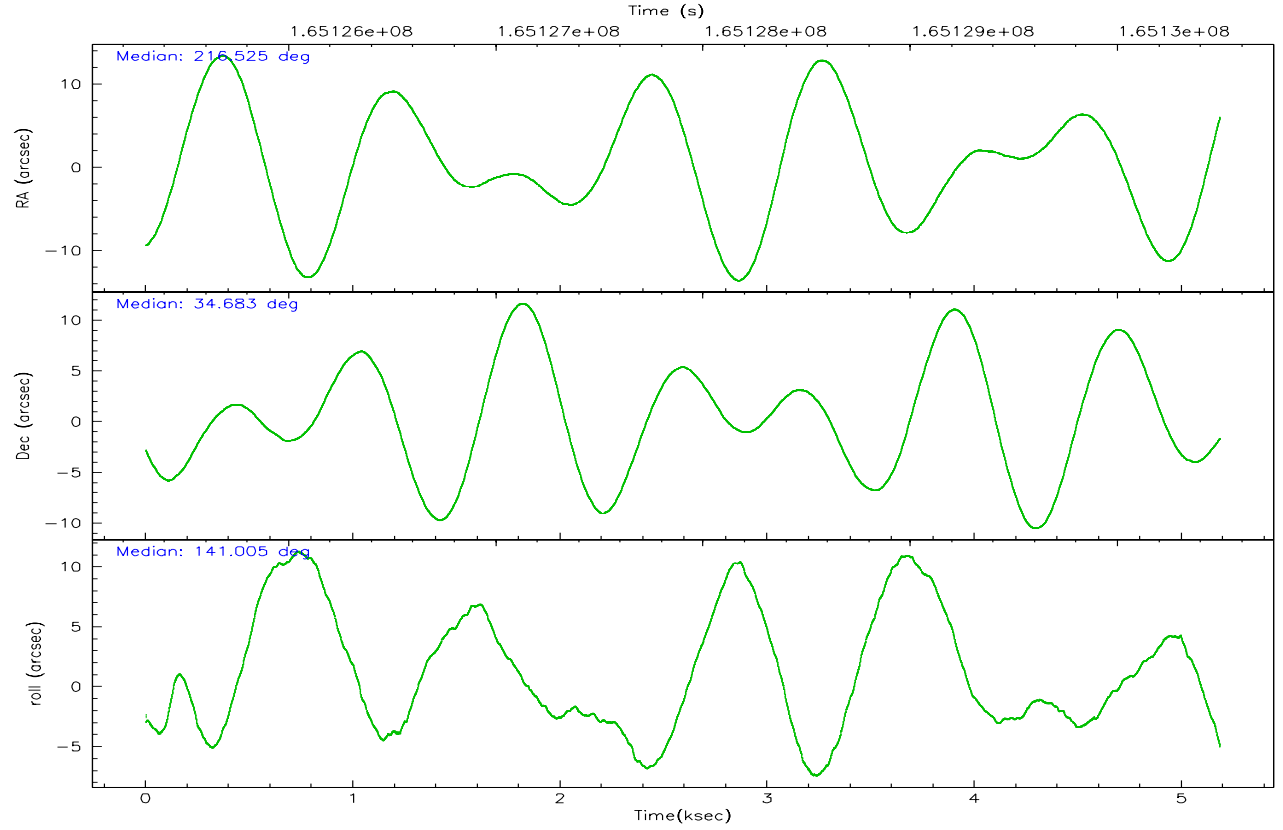
	ccd 0	ccd 1	ccd 2	ccd 3	ccd 6
grade 0 events	780	893	851	820	802
	3%	4%	3%	3%	3%
grade 1 events	10	8	8	14	9
	0%	0%	0%	0%	0%
grade 2 events	543	481	585	446	462
	2%	2%	2%	1%	1%
grade 3 events	295	267	266	261	274
	1%	1%	1%	1%	1%
grade 4 events	245	307	246	260	257
	1%	1%	0%	1%	1%
grade 5 events	722	772	635	790	775
	3%	3%	2%	3%	3%
grade 6 events	403	471	385	388	459
	1%	2%	1%	1%	1%
grade 7 events	19623	18514	23067	22234	21471
	86%	85%	88%	88%	87%

2.2 Compared Parameters

Parameter	Planned	Actual	Parameter	Planned	Actual
Instrument	ACIS	ACIS	Obspar format version number	6	6
Detector	ACIS-01236	ACIS-01236	Obspar file type	PREDICTED	ACTUAL
Grating	NONE	NONE	Obspar update status	NONE	UPDATED
Data mode	VFAINT	VFAINT	On-chip summing requested	N	N
Observation mode	POINTING	POINTING	Subarray requested	NONE	NONE
Pointing RA	216.557509	216.5245357693233	Alternating exposures requested	N	N
Pointing Dec	34.679001	34.68308735884617	Primary exposure time	0.000000	3.1
Pointing Roll	140.782782	141.0102440469207			
SIM focus pos (mm)	-0.782348	-0.7809083437167272			
SIM defocus (mm)	0	0.001439871863259334			
SIM translation stage pos (mm)	-233.592463	-233.5874344608287			
SIM translation stage offset (mm)	0	-0.005018542100998502			
Observation start time	165125499.184000	165125124.01375			
Observation start date	2003-03-27T04:10:35	2003-03-27T04:05:24			
Observation end time	165130499.184000	165130633.38898			
Observation end date	2003-03-27T05:33:55	2003-03-27T05:37:13			
Read mode	TIMED	TIMED			

2.3 Aspect



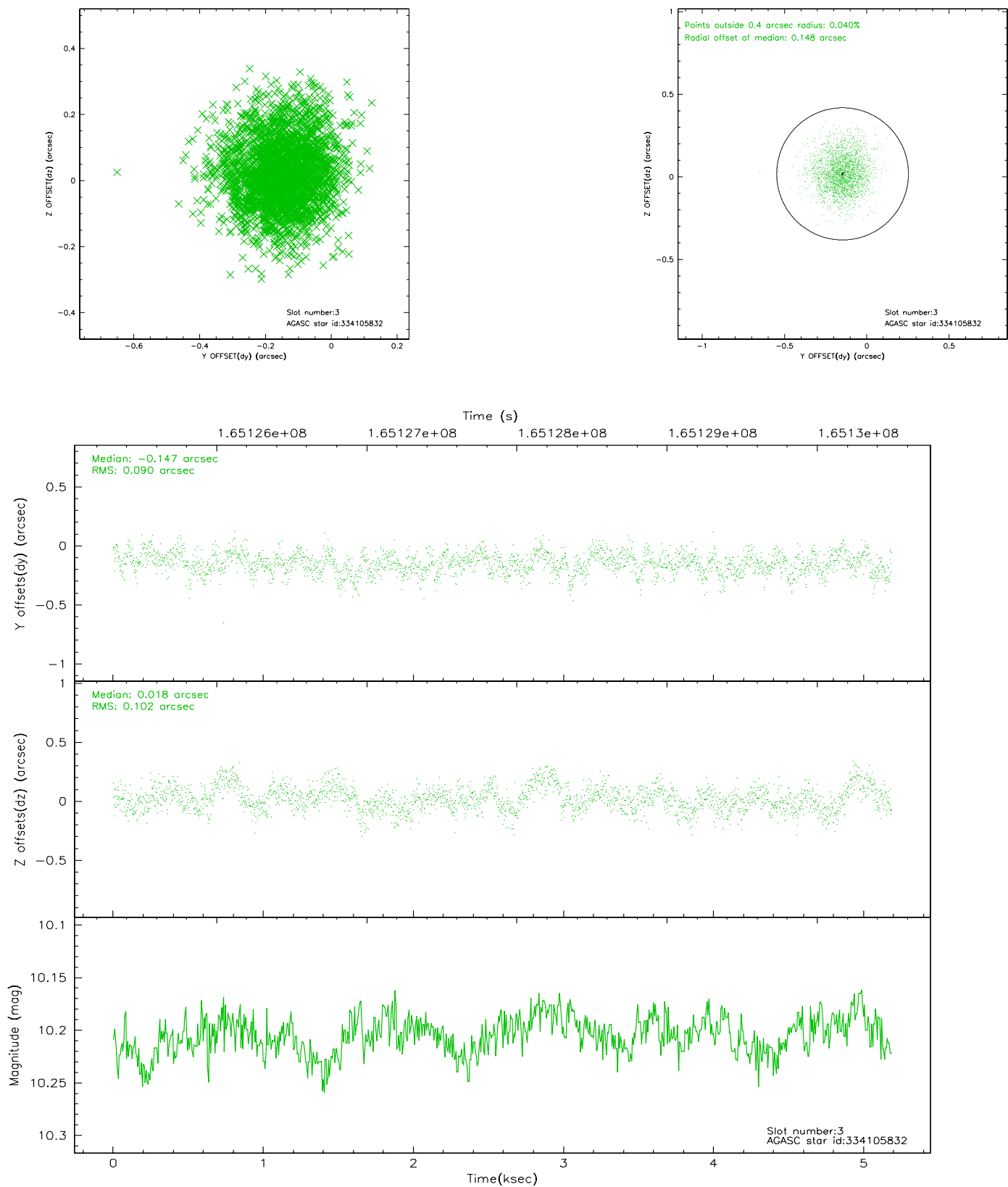


Slot Statistics

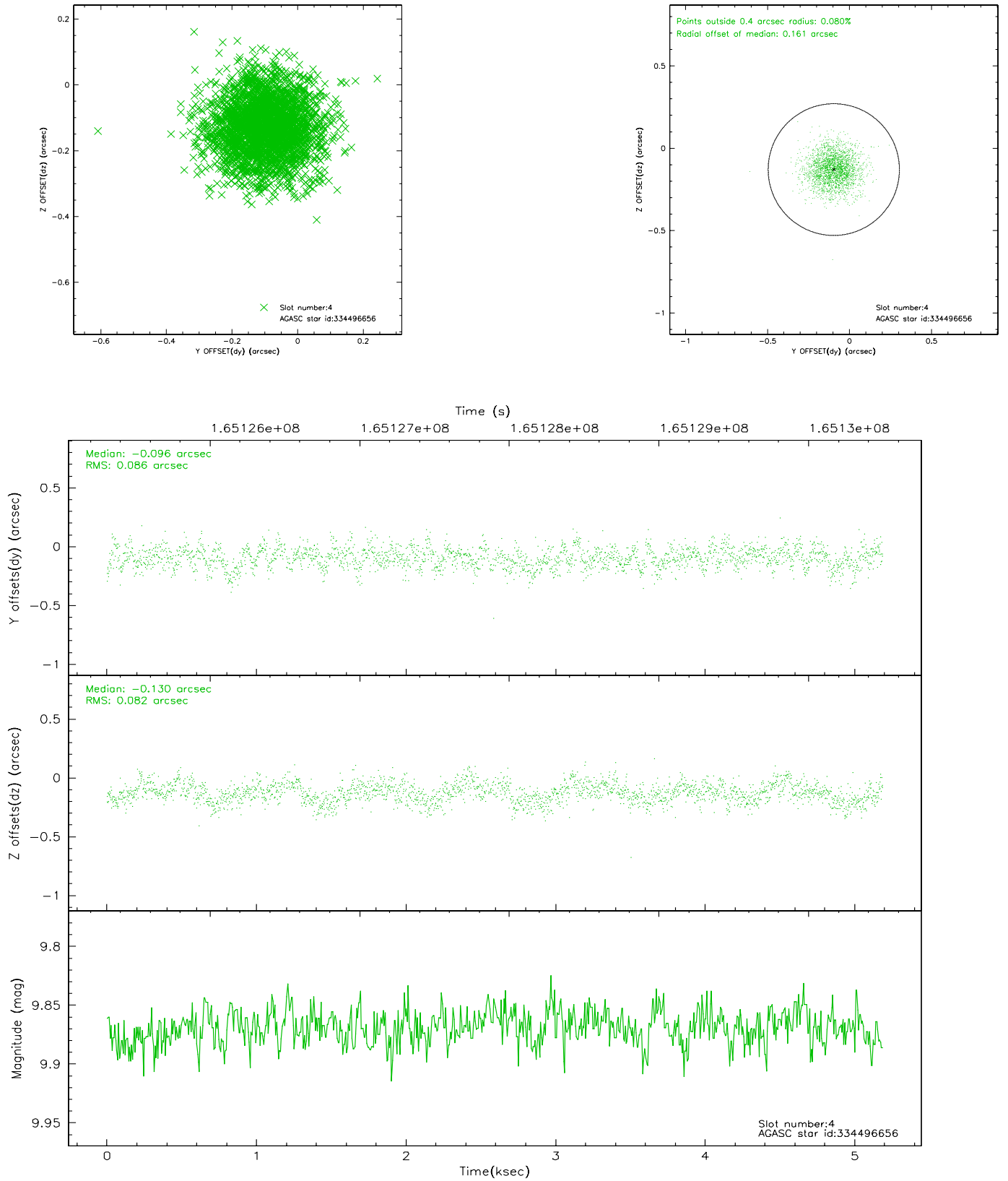
slot	status	id	mag	n_pts	med_dy	med_dz	dr1	dr2	ra	dec	mean_y	mean_z
0	FID	ACIS-I-1	7.26	1265	0.002	0.041	0.006	0.009	0.000000	0.000000	936.27	-830.57
1	FID	ACIS-I-5	7.24	1265	-0.065	0.055	0.006	0.010	0.000000	0.000000	-1811.23	1066.39
2	FID	ACIS-I-6	7.26	1265	-0.028	-0.026	0.006	0.011	0.000000	0.000000	400.55	1712.11
3	GUIDE	334105832	10.20	2530	-0.147	0.018	0.146	0.236	215.847735	34.556918	1357.25	1665.40
4	GUIDE	334496656	9.87	2496	-0.096	-0.130	0.125	0.206	215.929218	35.031287	2241.19	184.59
5	GUIDE	335021128	9.36	2529	0.127	0.127	0.089	0.145	216.159551	34.422539	334.58	1460.90
6	GUIDE	335028336	9.47	2530	0.057	-0.024	0.102	0.154	217.189840	34.665629	-1476.65	-1150.65
7	GUIDE	335030384	8.84	2529	0.062	0.005	0.071	0.113	216.806407	34.722197	-471.80	-587.34

2.4 Star Slots

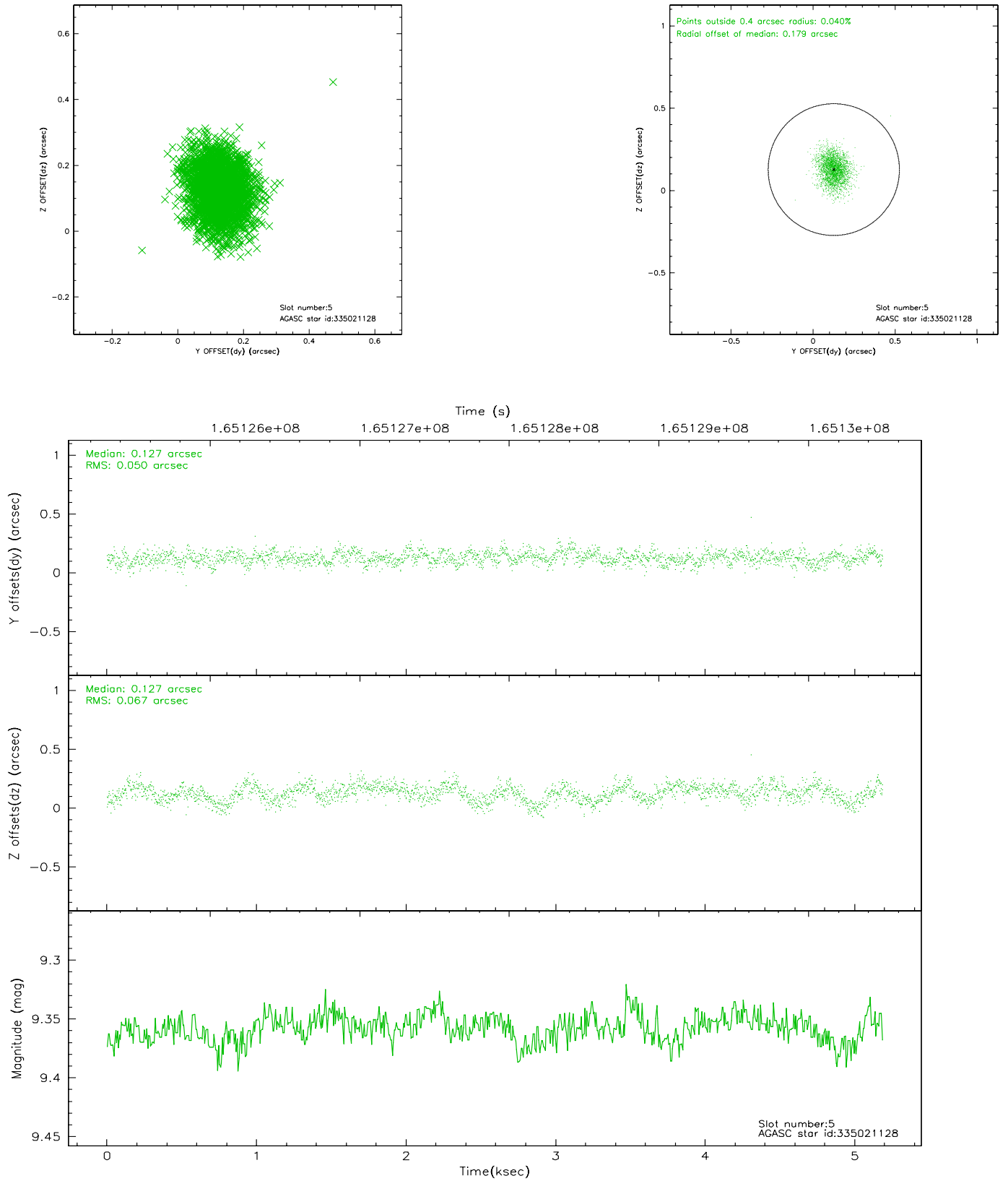
2.4.1 Slot 3



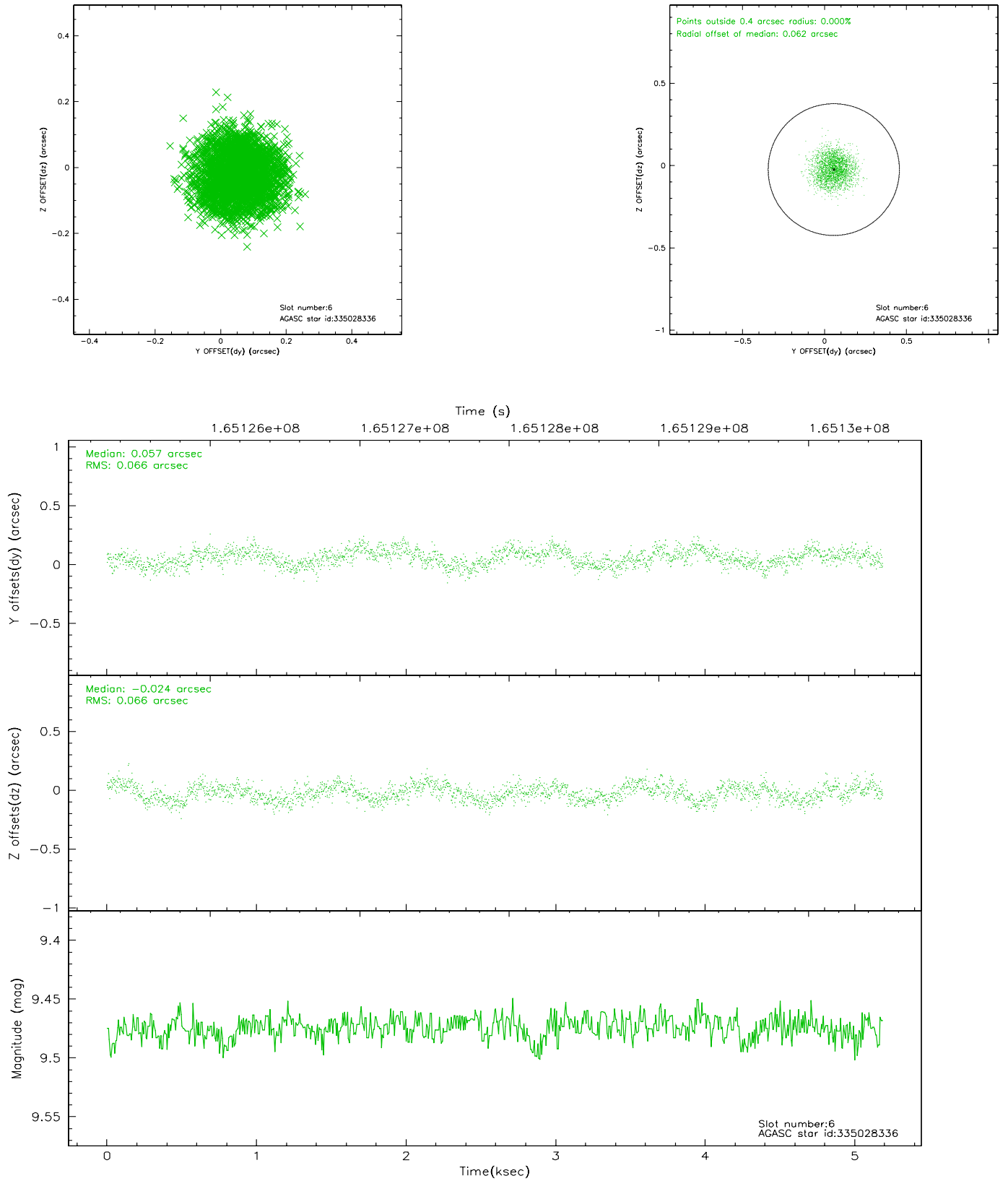
2.4.2 Slot 4



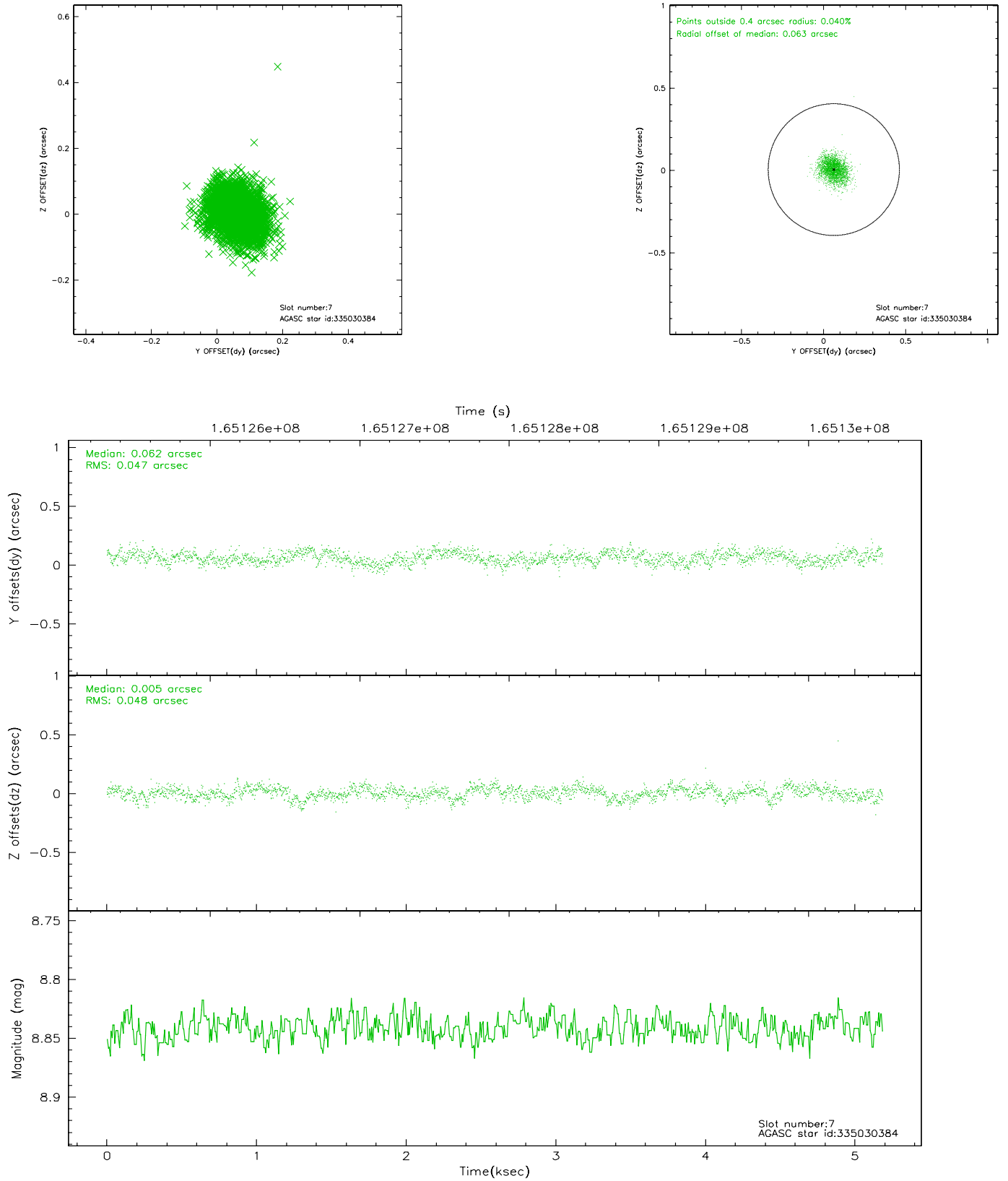
2.4.3 Slot 5



2.4.4 Slot 6

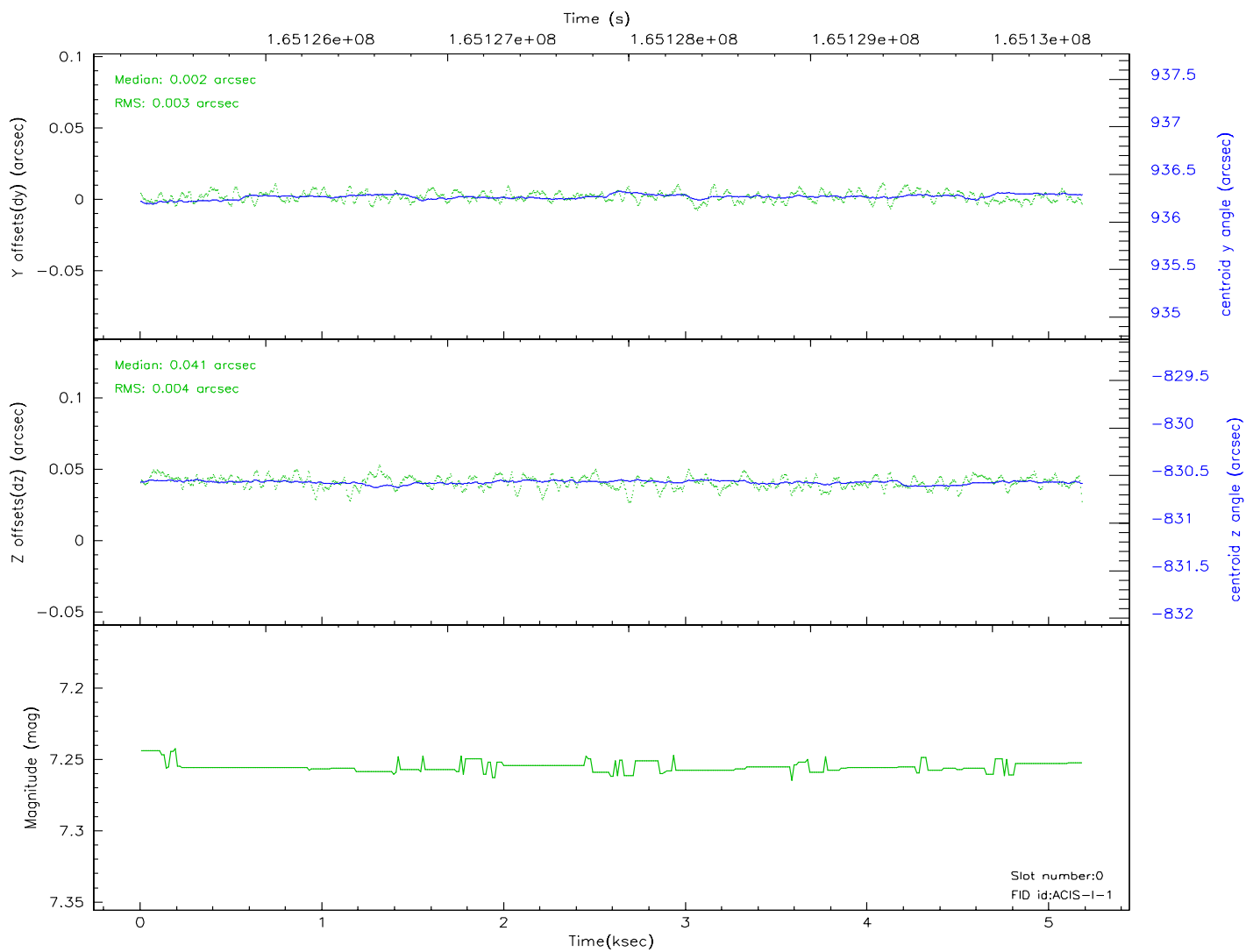
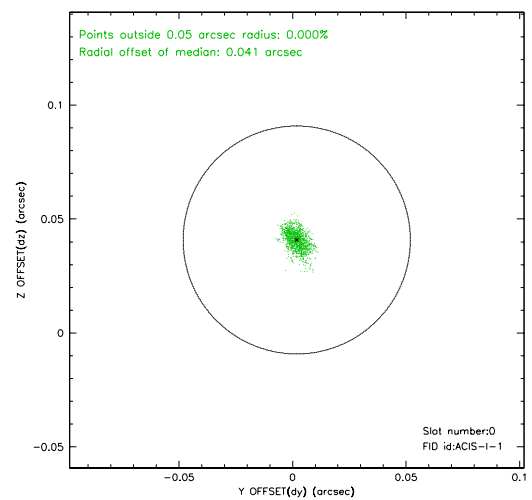
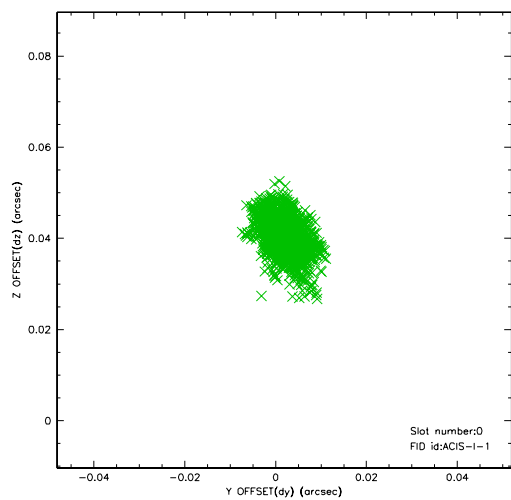


2.4.5 Slot 7

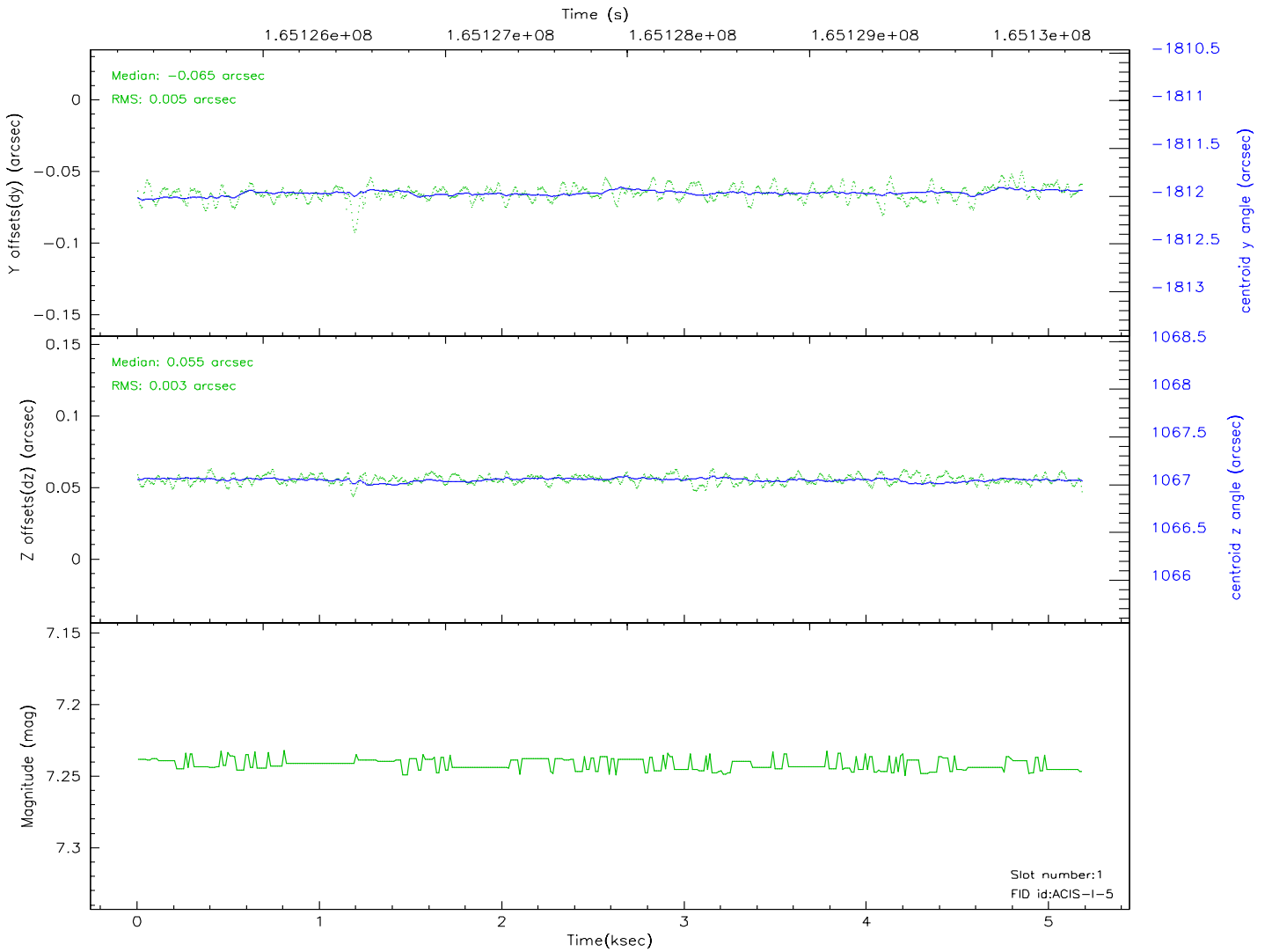
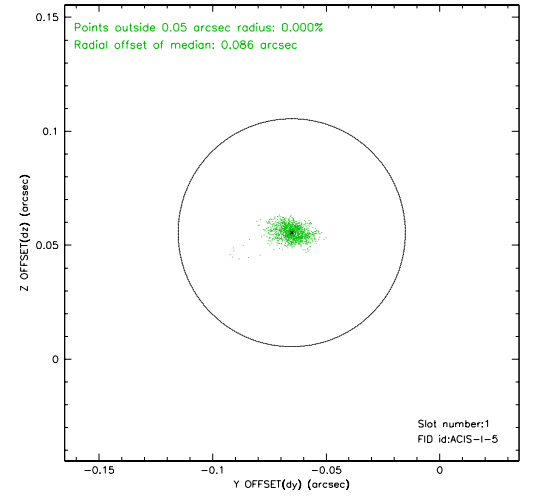
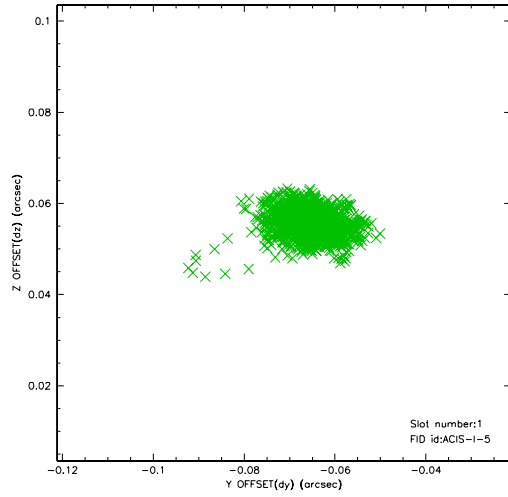


2.5 FID Slots

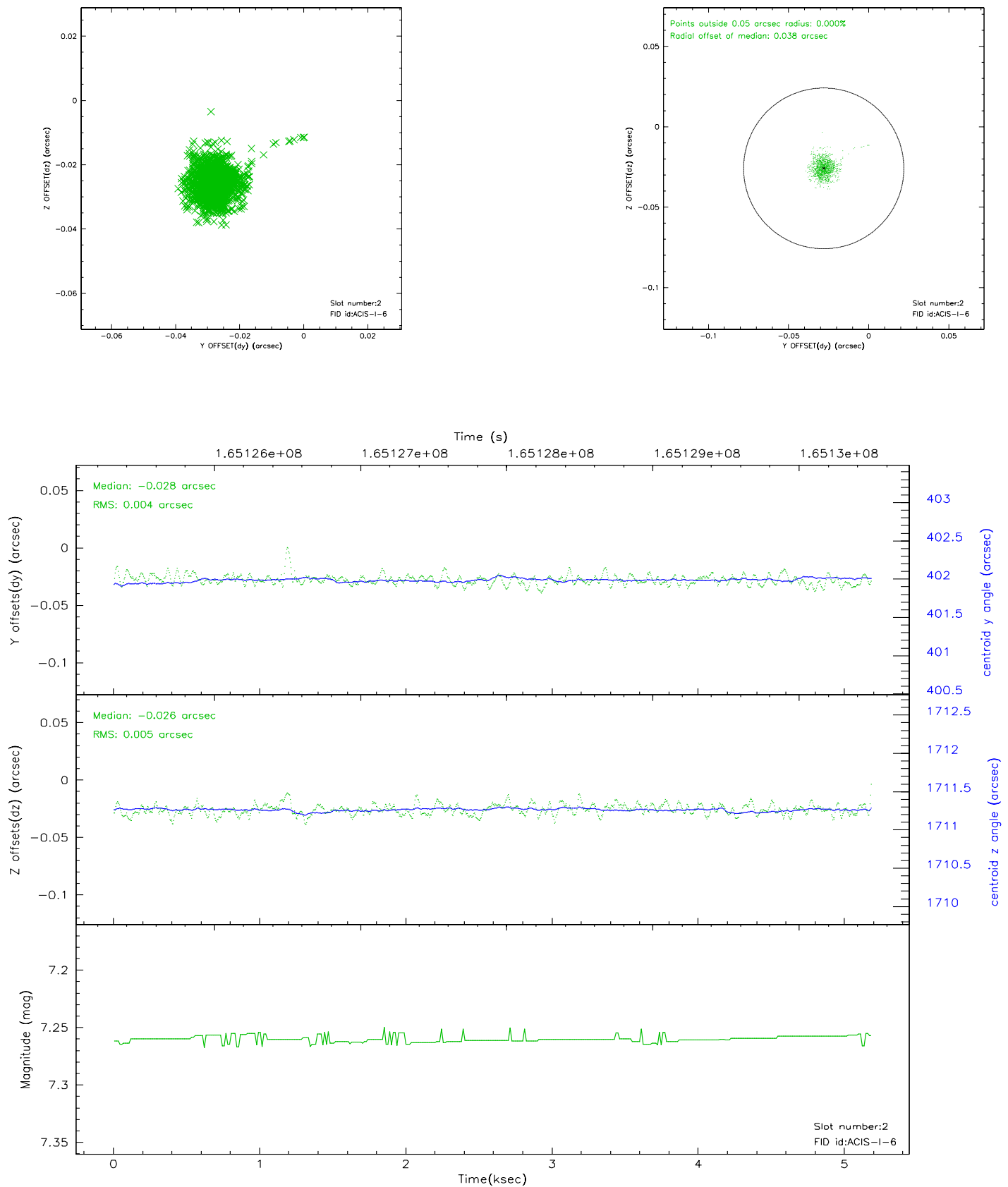
2.5.1 Slot 0



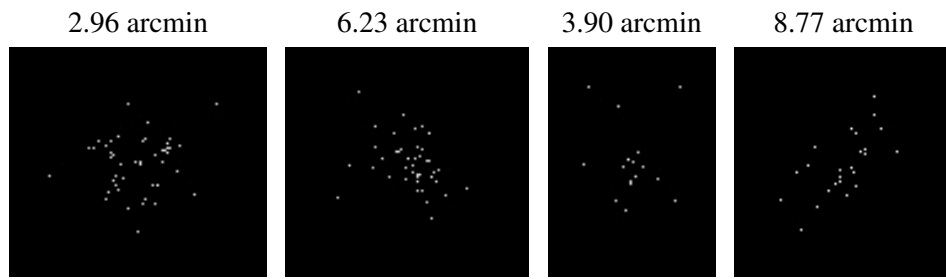
2.5.2 Slot 1



2.5.3 Slot 2



3 Point Sources



A Summary

A.1 Status

V&V Scientist	Jen Lauer
V&V Date (YYYY-MM-DD)	2006.07.30
V&V Edition	1
V&V Disposition and Status	OK
V&V Charge Time	4.78

A.2 Comments