

V&V Reference Report

L2 ASCDS Version : 7.6.8

Observation 3527 - L2 Version 001
Chandra X-Ray Center

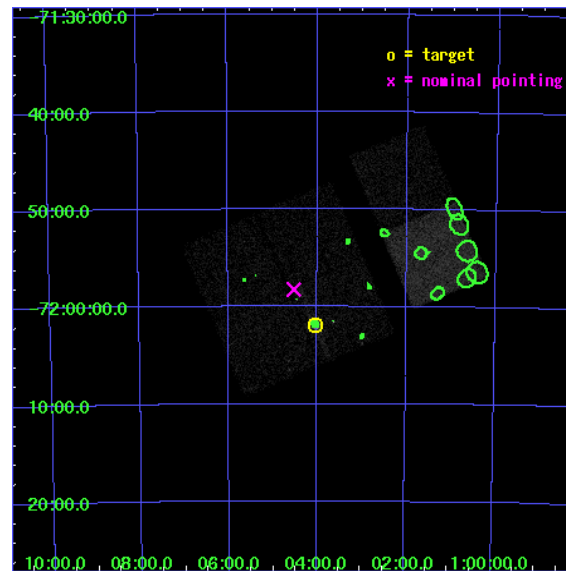
L2 Processing Date : Jul 12 2006

Contents

1	Front	2
2	OBI	3
2.1	OBI	3
2.1.1	Images	3
2.1.2	Bias	3
2.1.3	Parameters	4
2.1.4	Events	4
2.2	Compared Parameters	5
2.3	Aspect	6
2.4	Star Slots	9
2.4.1	Slot 3	9
2.4.2	Slot 4	10
2.4.3	Slot 5	11
2.4.4	Slot 6	12
2.4.5	Slot 7	13
2.5	FID Slots	14
2.5.1	Slot 0	14
2.5.2	Slot 1	15
2.5.3	Slot 2	16
3	Point Sources	17
A	Summary	18
A.1	Status	18
A.2	Comments	18

1 Front

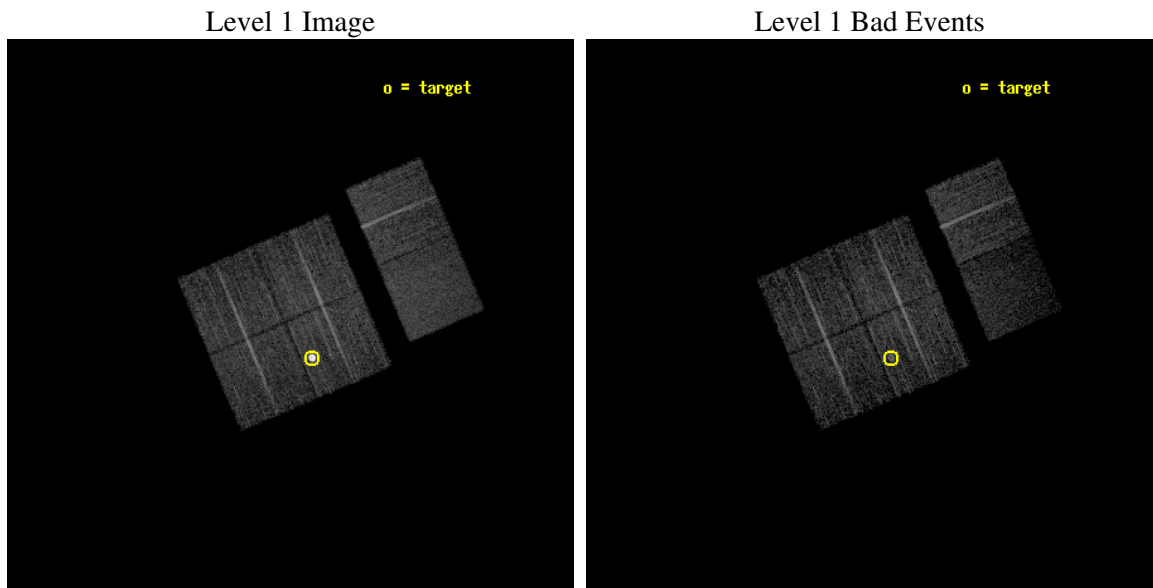
seq_num	590282
obs_id	3527
title	AO4B ACIS-I CALIBRATION OBSERVATIONS OF E0102-72
observer	Dr. CXC Calibration
object	E0102-72[I3,-120,-4.0,0.5,0]
dtcycle	0
cycle	P
ra_targ	16.01
dec_targ	-72.032028
ra_nom	16.13077007057
dec_nom	-71.970931483801
roll_nom	66.966745776057
revision	2
ontime	7964.7999703288
livetime	7863.9448772777
ontime0	7964.7999703288
ontime1	7964.7999703288
ontime2	7961.5589701533
ontime3	7964.7999703288
ontime6	7964.7999703288
ontime7	7964.7999703288
l2events	59580



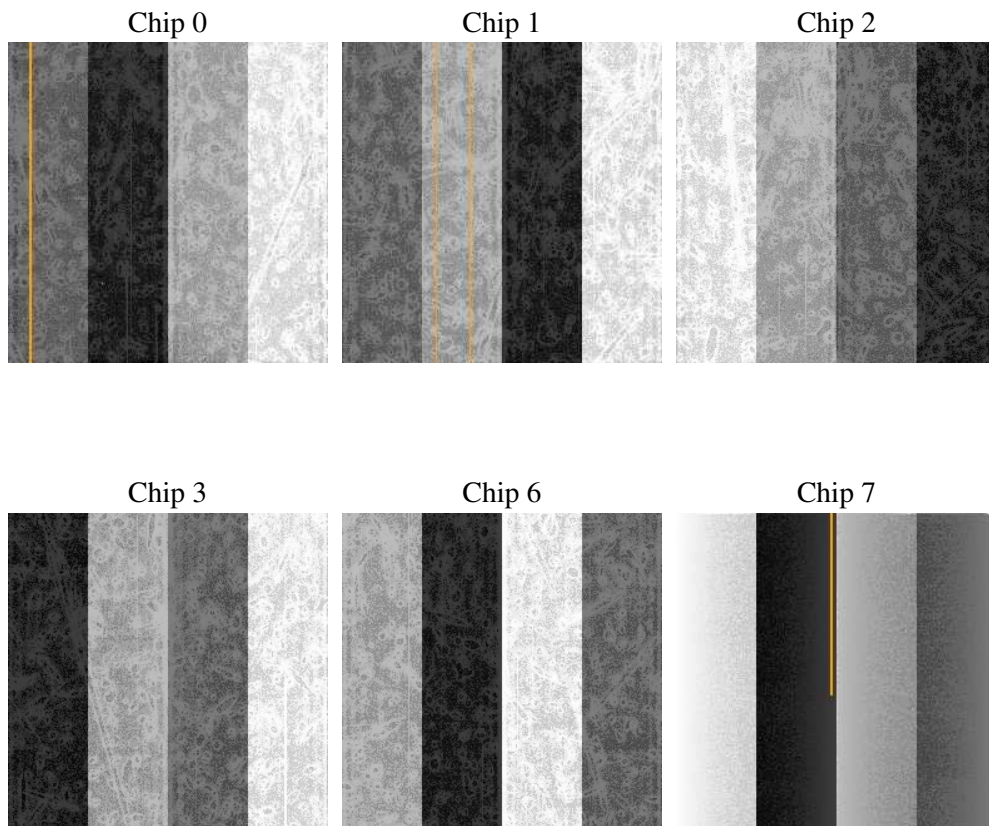
2 OBI

2.1 OBI

2.1.1 Images



2.1.2 Bias



2.1.3 Parameters

obi_num	0
ascdsver	7.6.8
caldbver	3.2.2
date	2006-07-12T23:07:40
revision	2

sched_exp_time	8000.000000
ontime	7969.6301004887
ontime0	7969.6300806105
ontime1	7969.6300806105
ontime2	7966.3891003132
ontime3	7969.6301004887
ontime6	7969.6301004887
ontime7	7969.6301004887
l1events	251314

2.1.4 Events

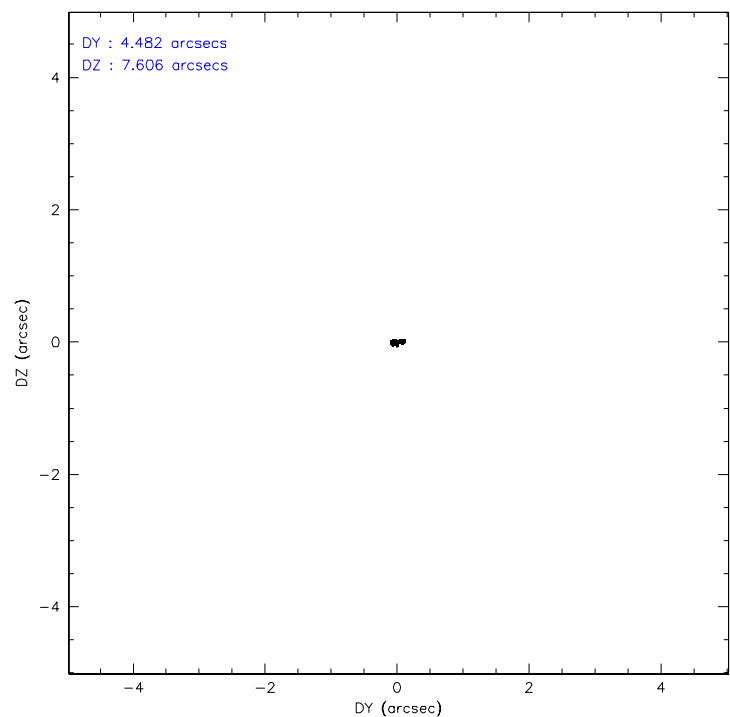
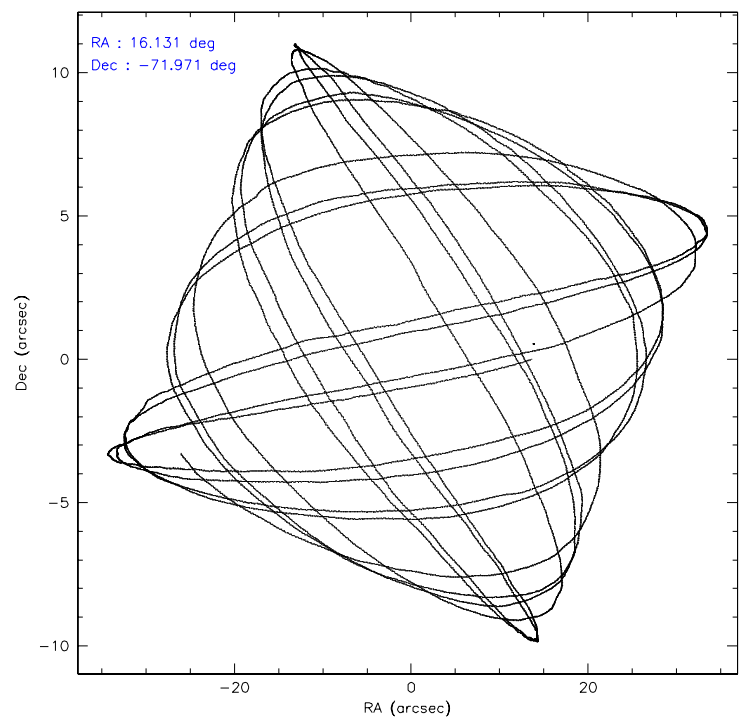
	ccd 0	ccd 1	ccd 2	ccd 3	ccd 6	ccd 7
level 1 events	35803	33744	39603	65838	39805	36521
rejected events	31870	29317	35905	35893	35756	19093
rejected %	89%	86%	90%	54%	89%	52%

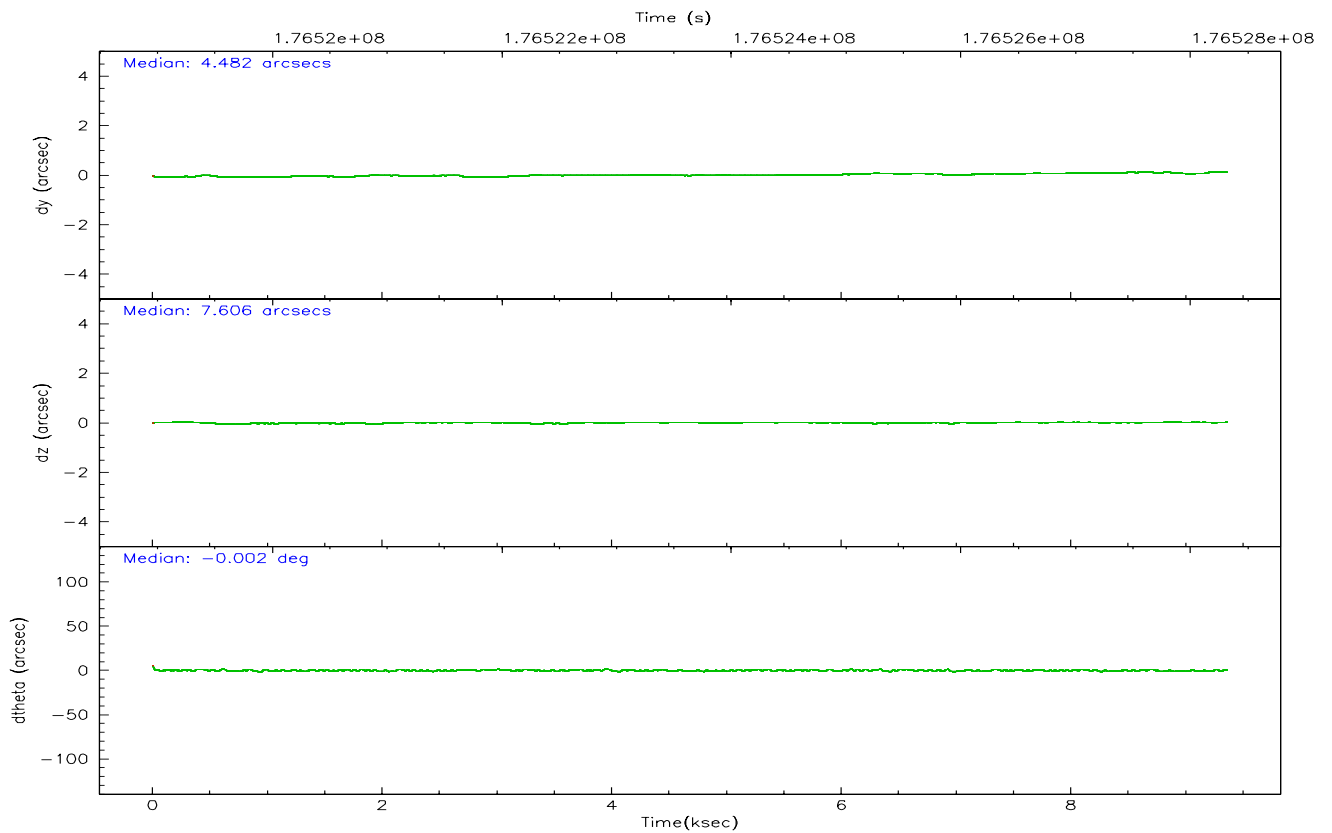
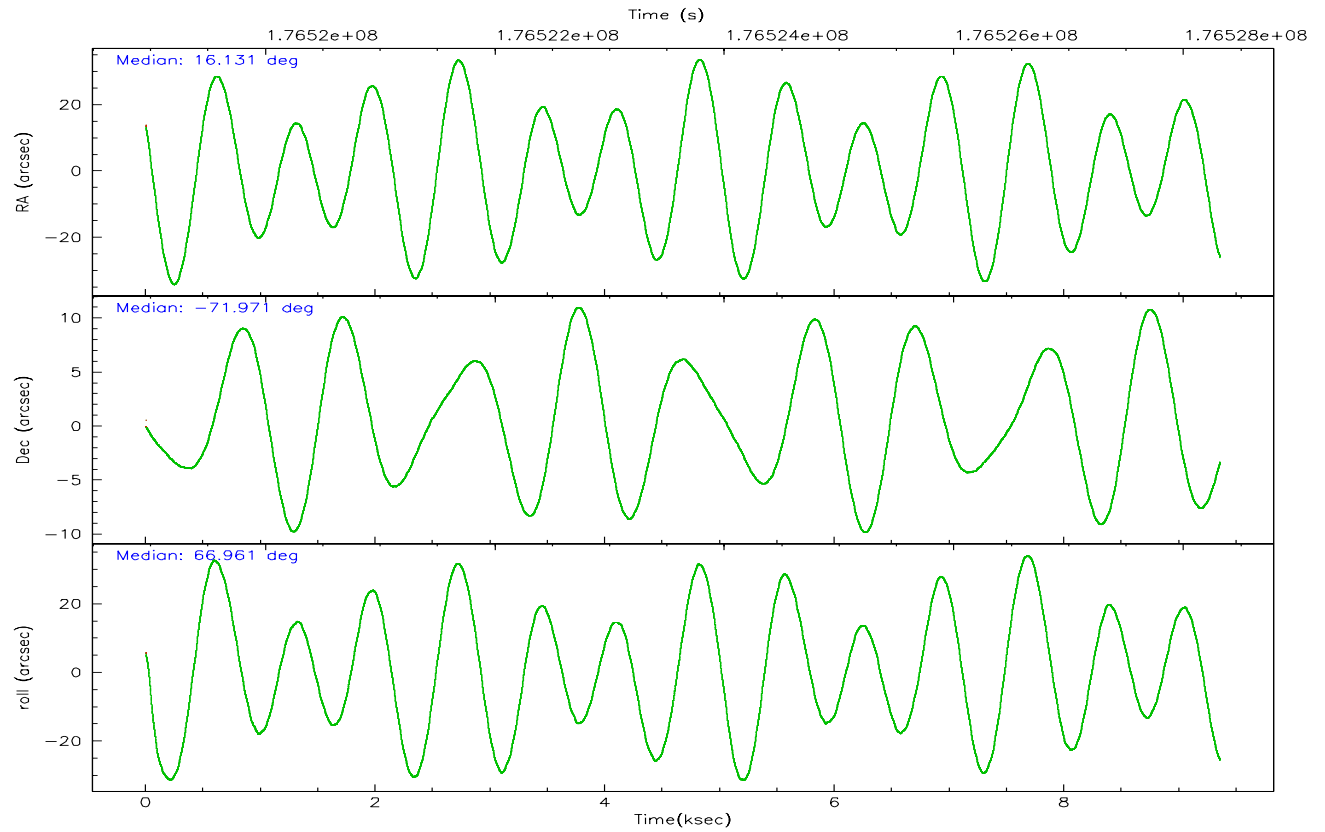
	ccd 0	ccd 1	ccd 2	ccd 3	ccd 6	ccd 7
grade 0 events	1524	1858	1461	24710	1494	1406
	4%	5%	3%	37%	3%	3%
grade 1 events	27	13	21	232	9	26
	0%	0%	0%	0%	0%	0%
grade 2 events	876	873	775	2681	824	4514
	2%	2%	1%	4%	2%	12%
grade 3 events	450	473	427	841	452	1087
	1%	1%	1%	1%	1%	2%
grade 4 events	408	480	440	895	428	1094
	1%	1%	1%	1%	1%	2%
grade 5 events	1097	1209	1019	1402	1334	2837
	3%	3%	2%	2%	3%	7%
grade 6 events	677	745	595	846	854	9341
	1%	2%	1%	1%	2%	25%
grade 7 events	30744	28093	34865	34231	34410	16216
	85%	83%	88%	51%	86%	44%

2.2 Compared Parameters

Parameter	Planned	Actual	Parameter	Planned	Actual
Instrument	ACIS	ACIS	Obspar format version number	6	6
Detector	ACIS-012367	ACIS-012367	Obspar file type	PREDICTED	ACTUAL
Grating	NONE	NONE	Obspar update status	NONE	UPDATED
Data mode	VFAINT	VFAINT	On-chip summing requested	N	N
Observation mode	POINTING	POINTING	Subarray requested	NONE	NONE
Pointing RA	16.142004	16.1307700705704	Alternating exposures requested	N	N
Pointing Dec	-71.998047	-71.97093148380085	Primary exposure time	0.000000	3.2
Pointing Roll	66.768745	66.96674577605718			
Window start time	174614464.184000	174614464.184000			
Window stop time	177292864.184000	177292864.184000			
SIM focus pos (mm)	-0.782348	-0.7809083437167272			
SIM defocus (mm)	0	0.001439871863259334			
SIM translation stage pos (mm)	-233.592463	-233.5874344608287			
SIM translation stage offset (mm)	0	-0.005018542100998502			
Observation start time	176520323.184000	176518777.47208			
Observation start date	2003-08-06T01:24:19	2003-08-06T00:59:37			
Observation end time	176528323.184000	176529422.61003			
Observation end date	2003-08-06T03:37:39	2003-08-06T03:57:02			
Read mode	TIMED	TIMED			

2.3 Aspect



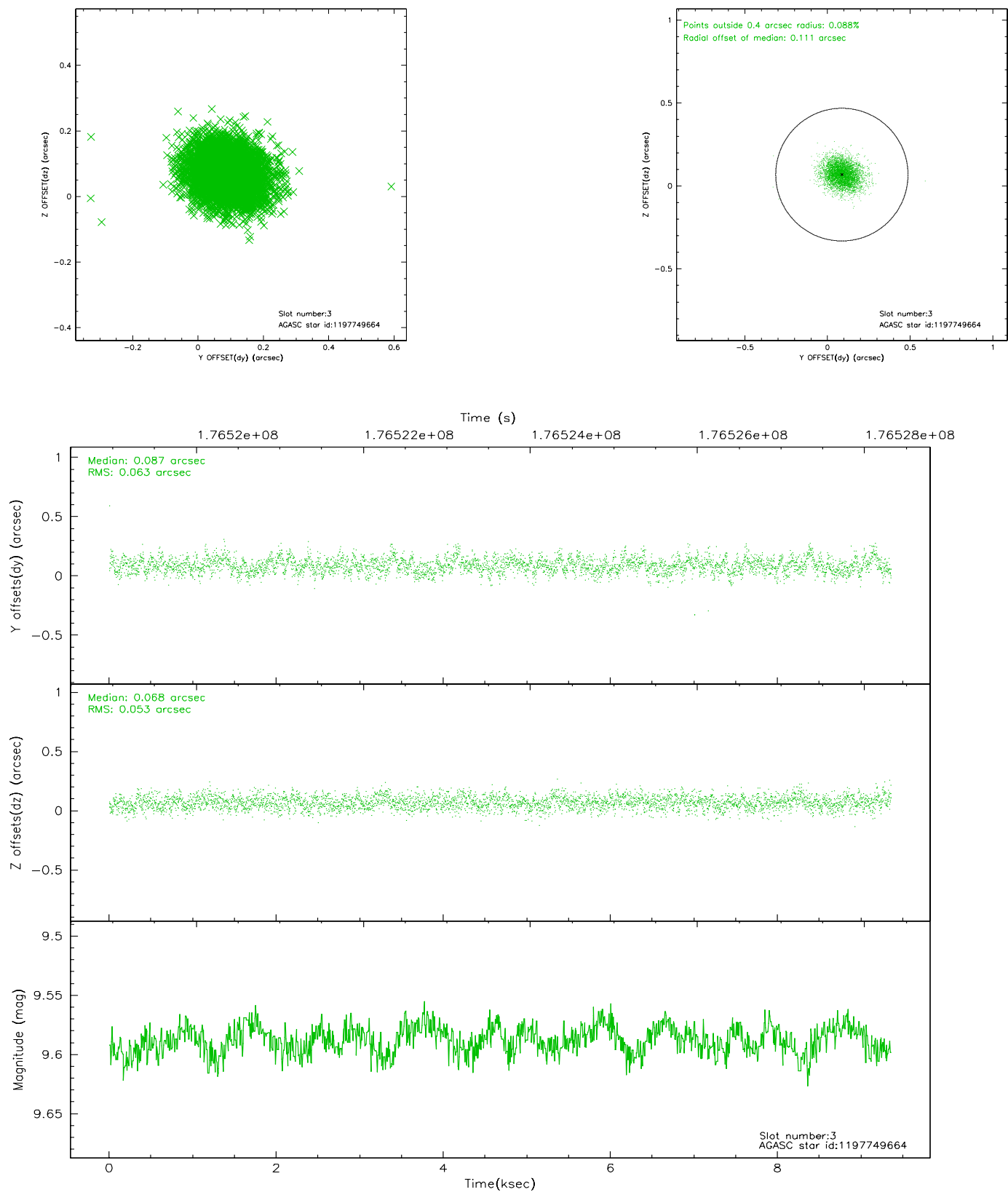


Slot Statistics

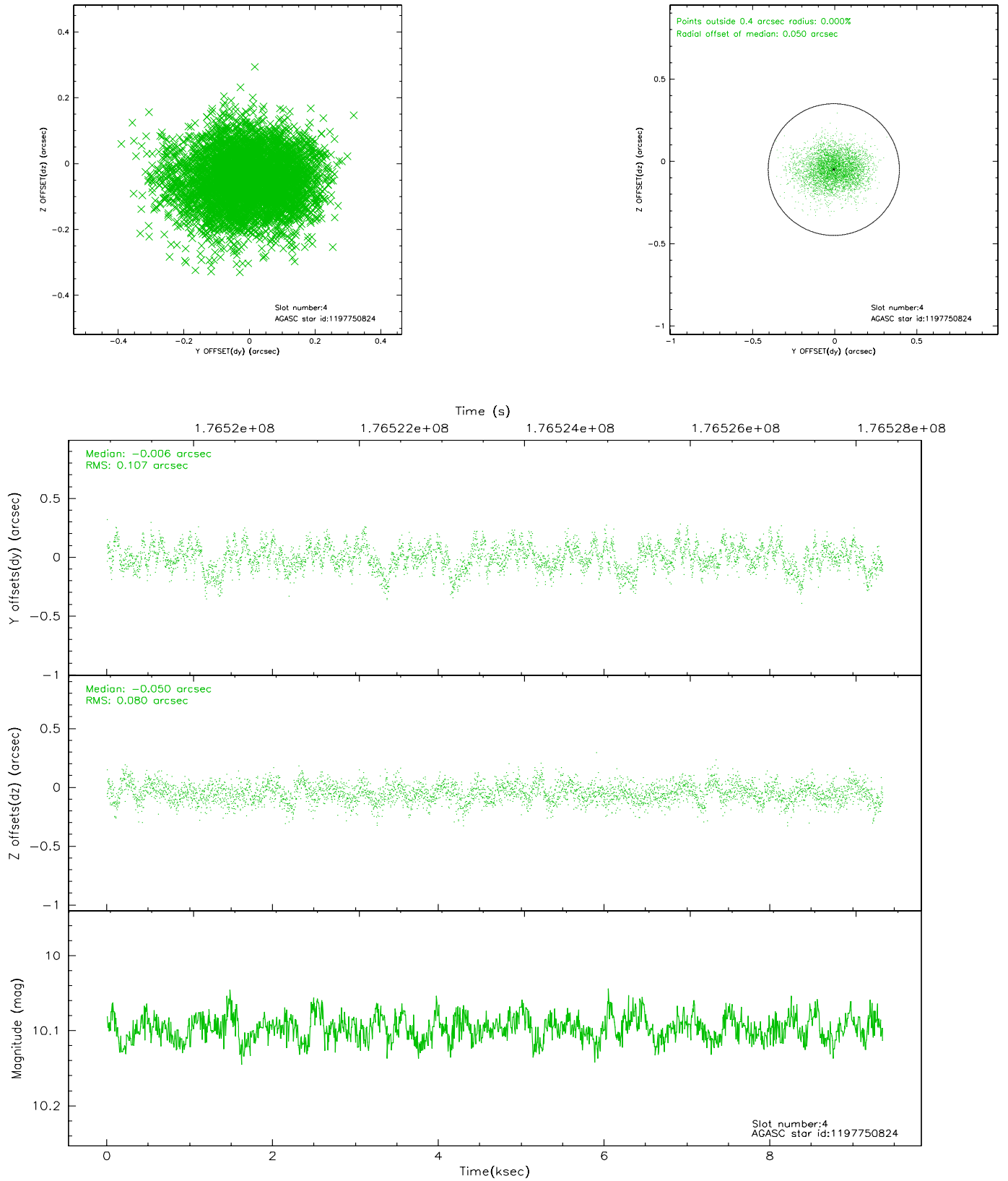
slot	status	id	mag	n_pts	med_dy	med_dz	dr1	dr2	ra	dec	mean_y	mean_z
0	FID	ACIS-I-2	7.13	2283	-0.058	-0.080	0.009	0.017	0.000000	0.000000	-758.97	-837.46
1	FID	ACIS-I-4	7.17	2283	0.083	0.061	0.005	0.009	0.000000	0.000000	2154.97	1068.57
2	FID	ACIS-I-5	7.22	2283	-0.125	0.089	0.009	0.015	0.000000	0.000000	-1812.12	1067.10
3	GUIDE	1197749664	9.59	4563	0.087	0.068	0.085	0.141	15.809015	-72.366369	-1362.12	-189.80
4	GUIDE	1197750824	10.10	4564	-0.006	-0.050	0.143	0.234	14.791487	-71.393477	1372.04	2277.14
5	GUIDE	1197750936	7.55	4566	-0.117	-0.029	0.067	0.103	15.387940	-71.549550	1140.14	1424.74
6	GUIDE	1198190968	10.00	4562	0.087	-0.032	0.104	0.171	15.749622	-72.545972	-1980.28	-389.16
7	GUIDE	1197885104	9.36	4561	-0.050	0.039	0.089	0.140	17.845067	-72.189368	82.12	-2005.14

2.4 Star Slots

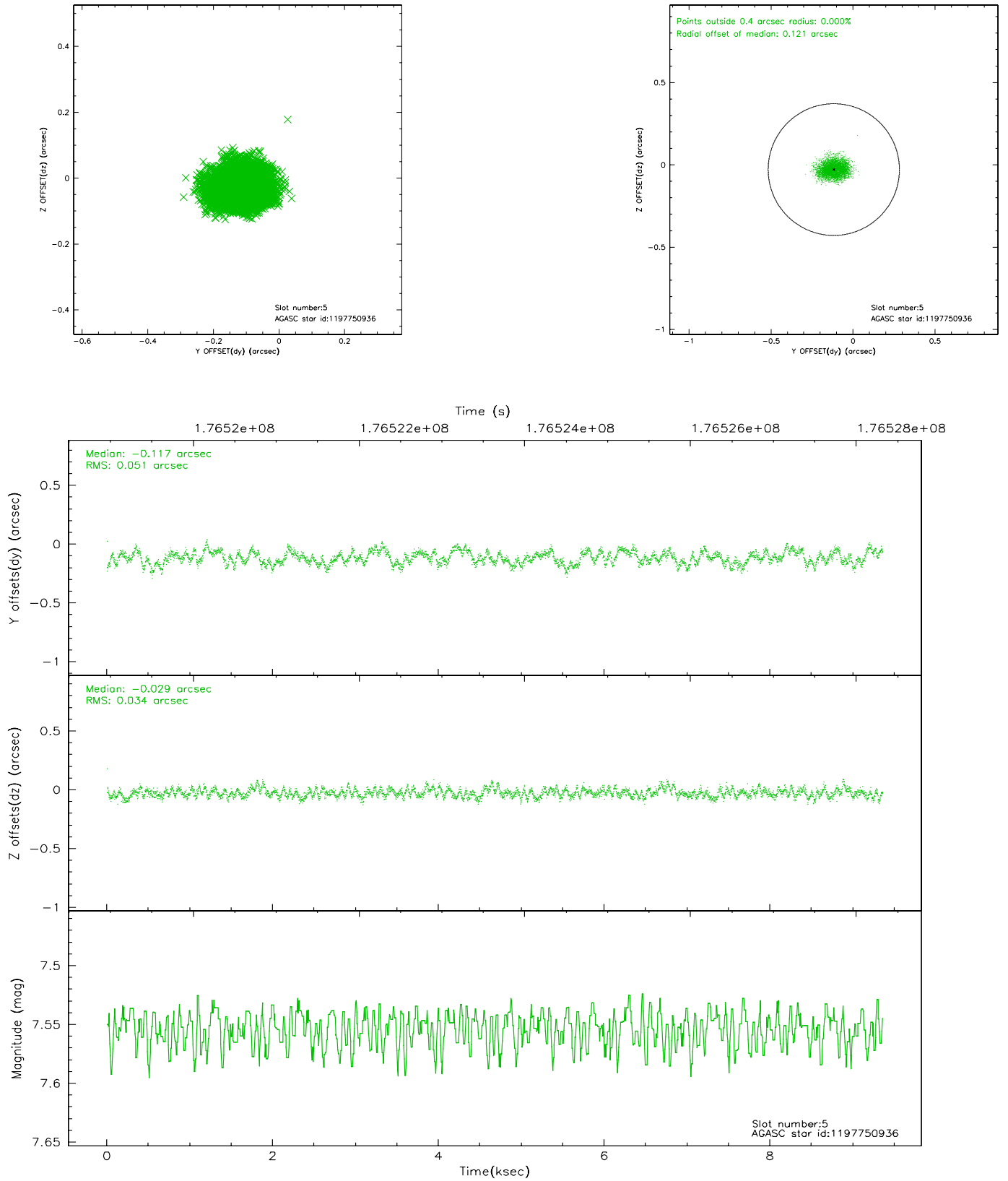
2.4.1 Slot 3



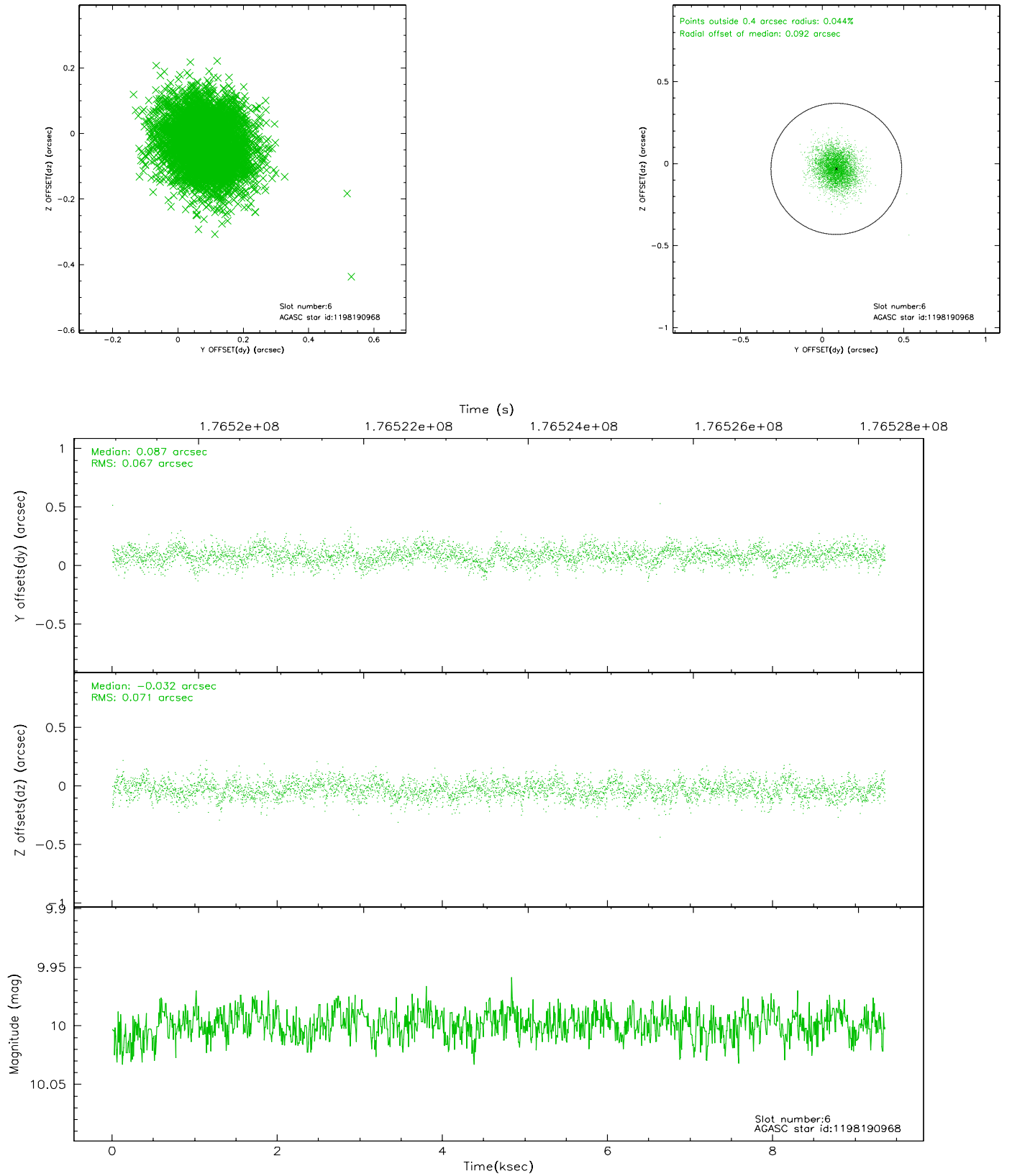
2.4.2 Slot 4



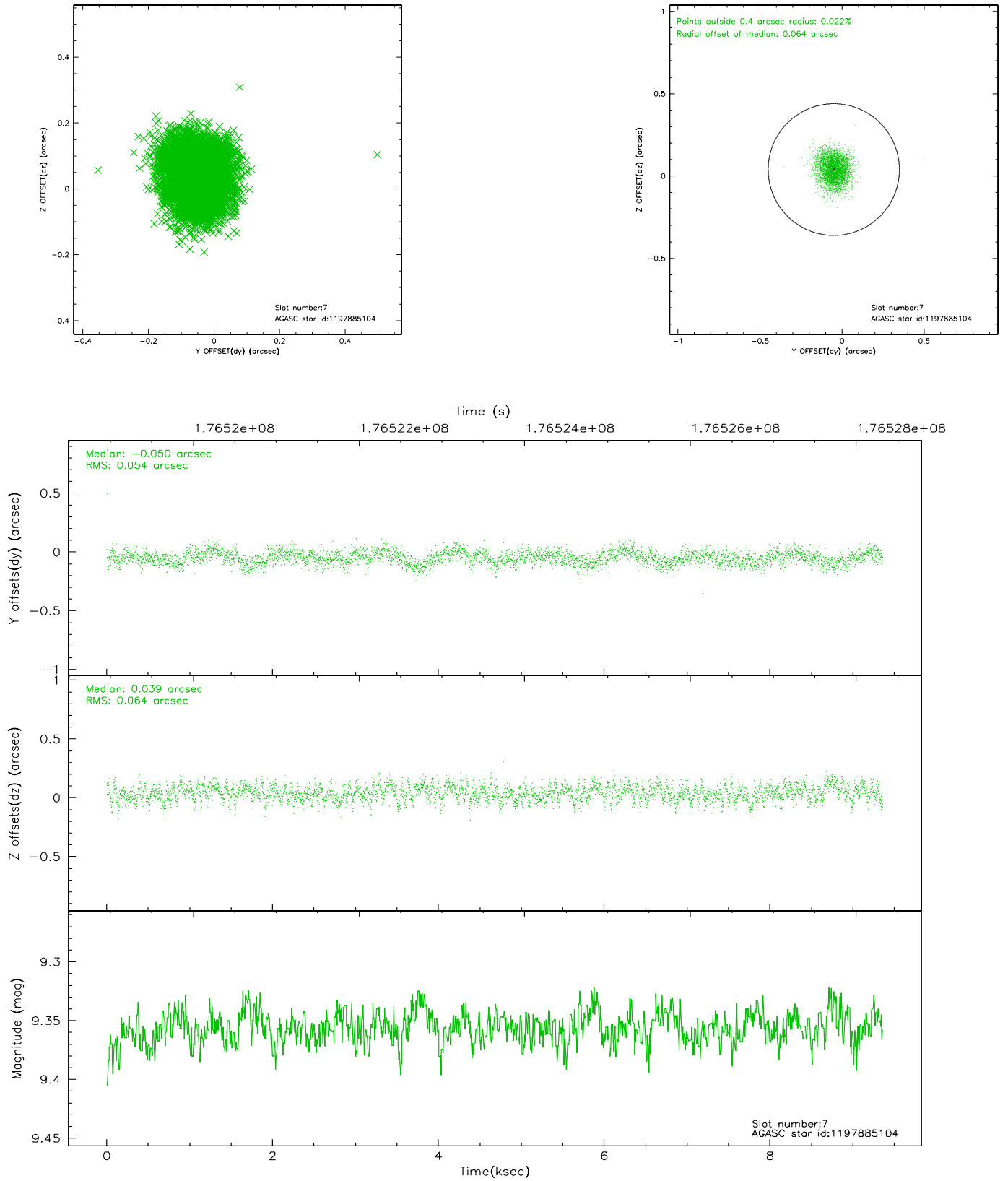
2.4.3 Slot 5



2.4.4 Slot 6

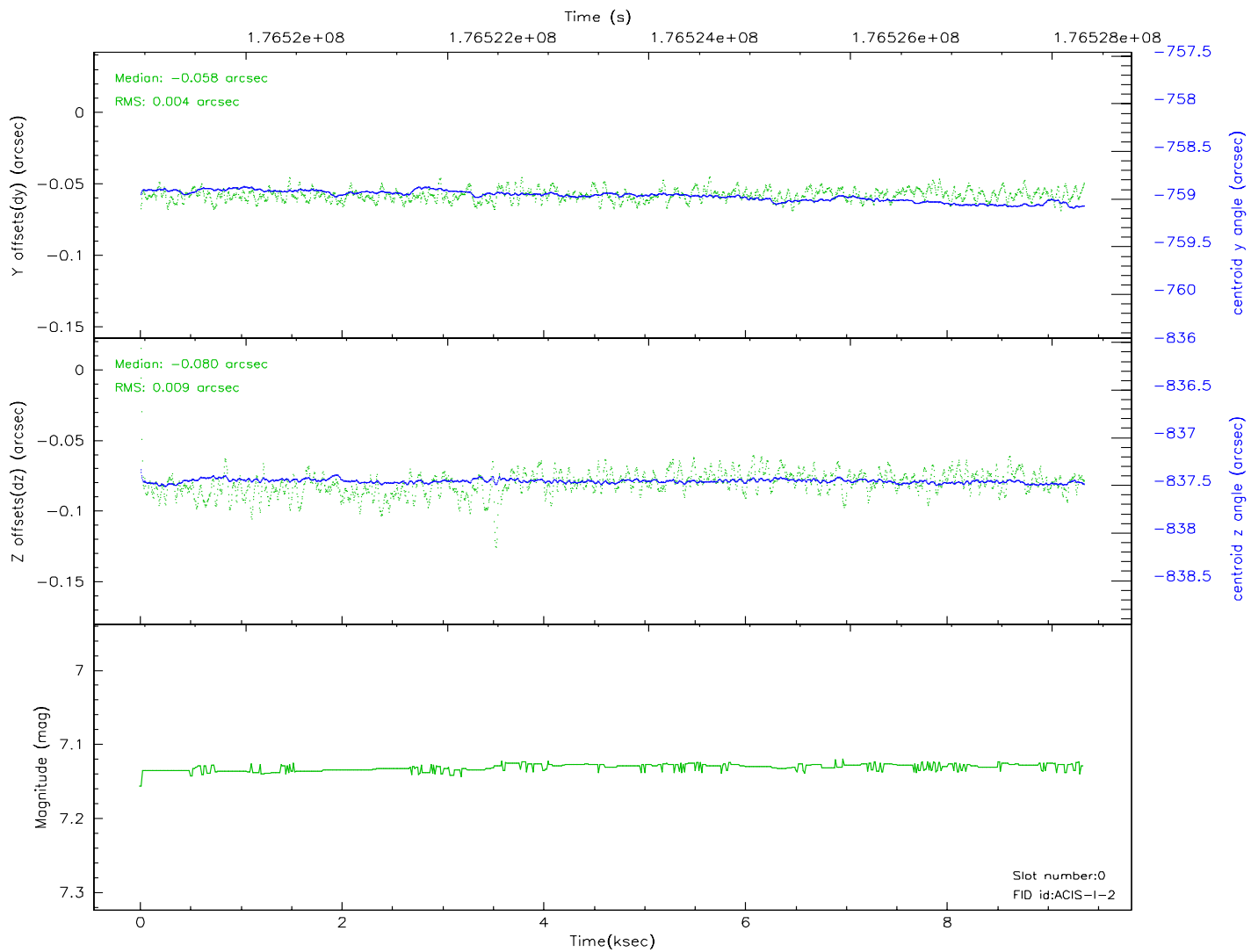
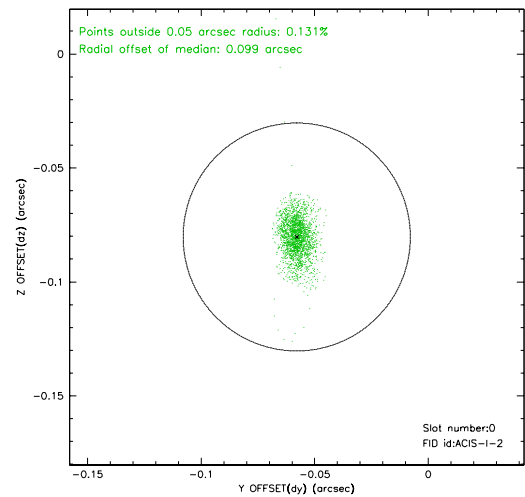
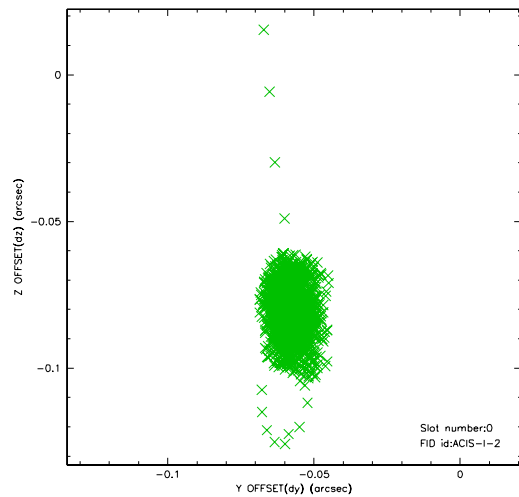


2.4.5 Slot 7

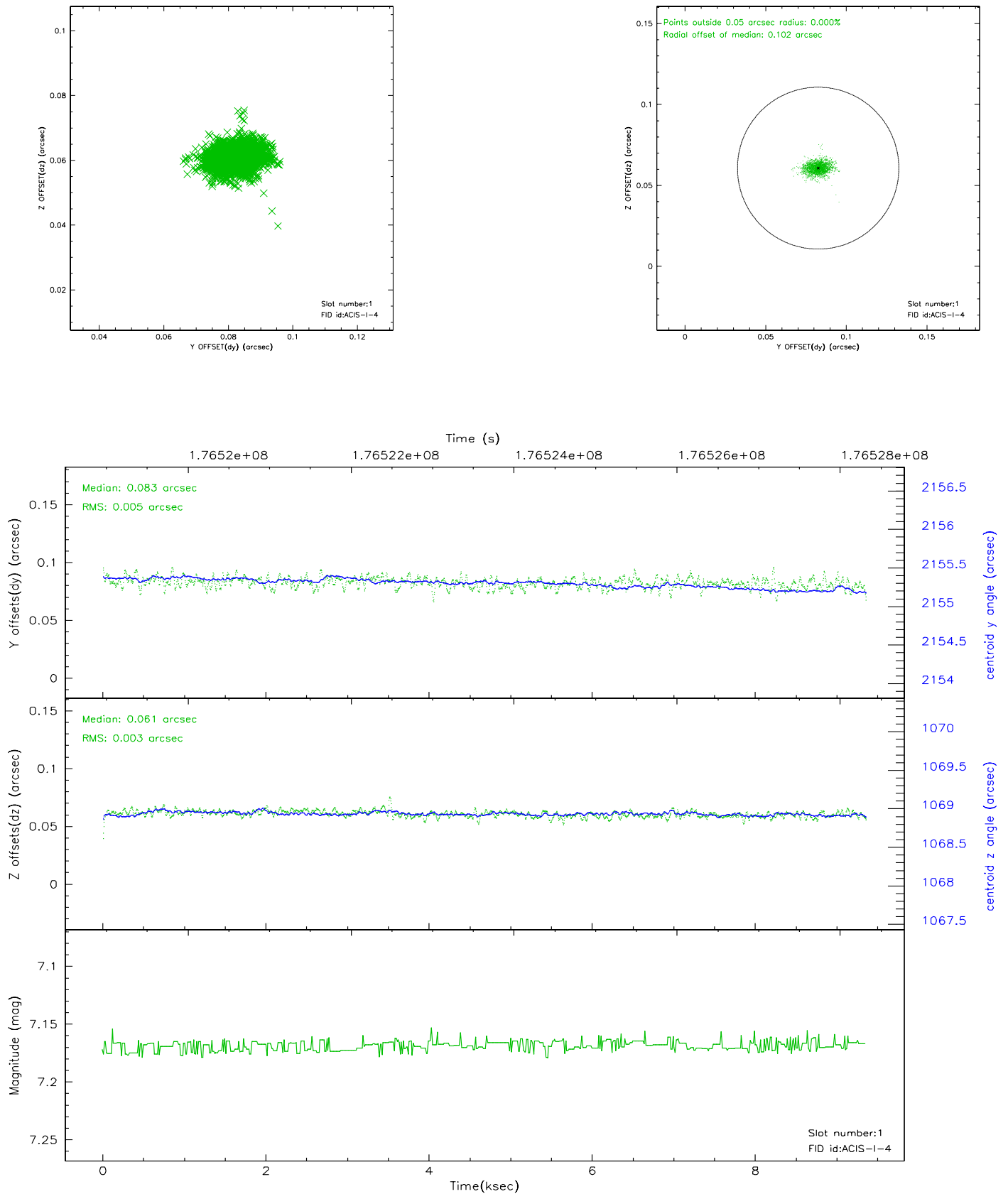


2.5 FID Slots

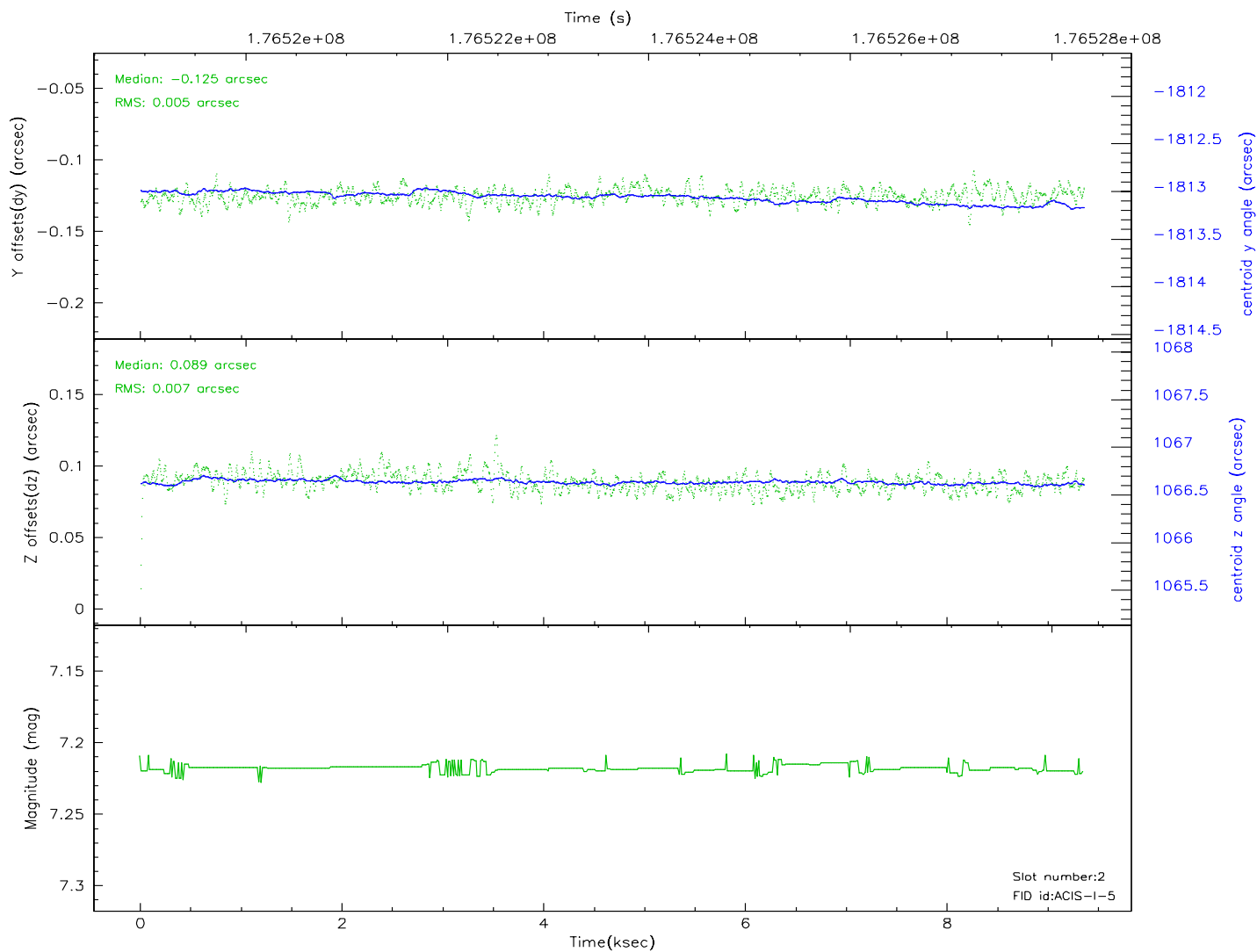
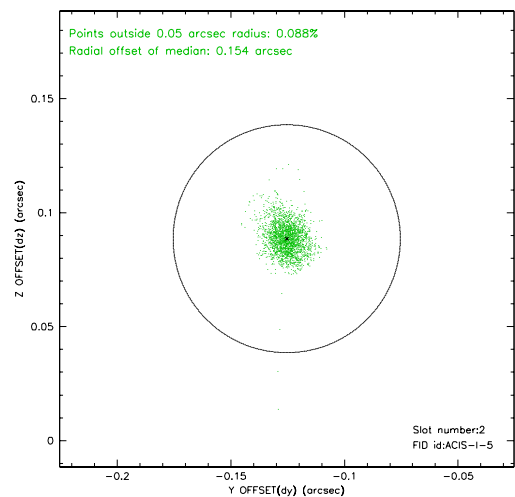
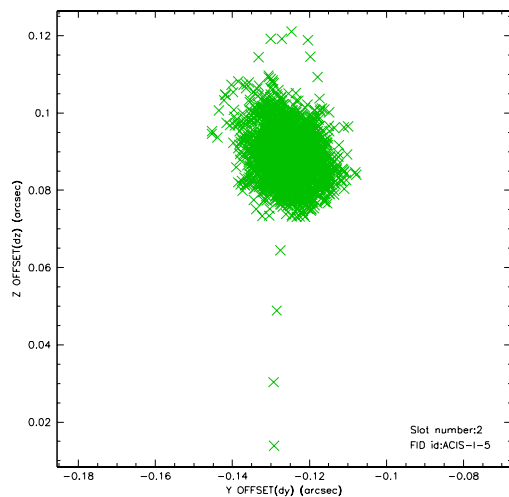
2.5.1 Slot 0



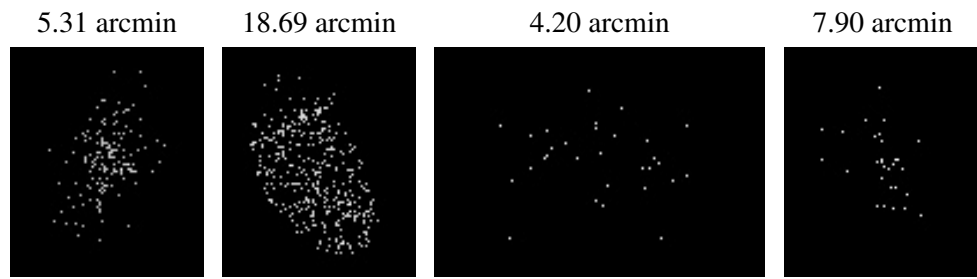
2.5.2 Slot 1



2.5.3 Slot 2



3 Point Sources



A Summary

A.1 Status

V&V Scientist	Jen Lauer
V&V Date (YYYY-MM-DD)	2006.07.13
V&V Edition	1
V&V Disposition and Status	OK
V&V Charge Time	7.967

A.2 Comments

Window constraint met.