

V&V Reference Report

L2 ASCDS Version : 8.4.5

Observation 3447 - L2 Version 3
Chandra X-Ray Center

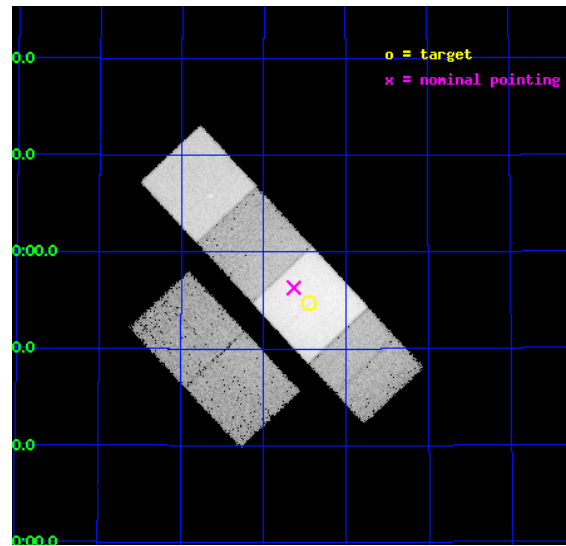
L2 Processing Date : Oct 5 2012

Contents

1	Front	2
2	OBI	3
2.1	OBI	3
2.1.1	Images	3
2.1.2	Bias	3
2.1.3	Parameters	4
2.1.4	Events	4
2.2	Compared Parameters	5
2.3	Aspect	6
2.4	Star Slots	9
2.4.1	Slot 3	9
2.4.2	Slot 4	10
2.4.3	Slot 5	11
2.4.4	Slot 6	12
2.4.5	Slot 7	13
2.5	FID Slots	14
2.5.1	Slot 0	14
2.5.2	Slot 1	15
2.5.3	Slot 2	16
A	Summary	17
A.1	Status	17
A.2	Comments	17

1 Front

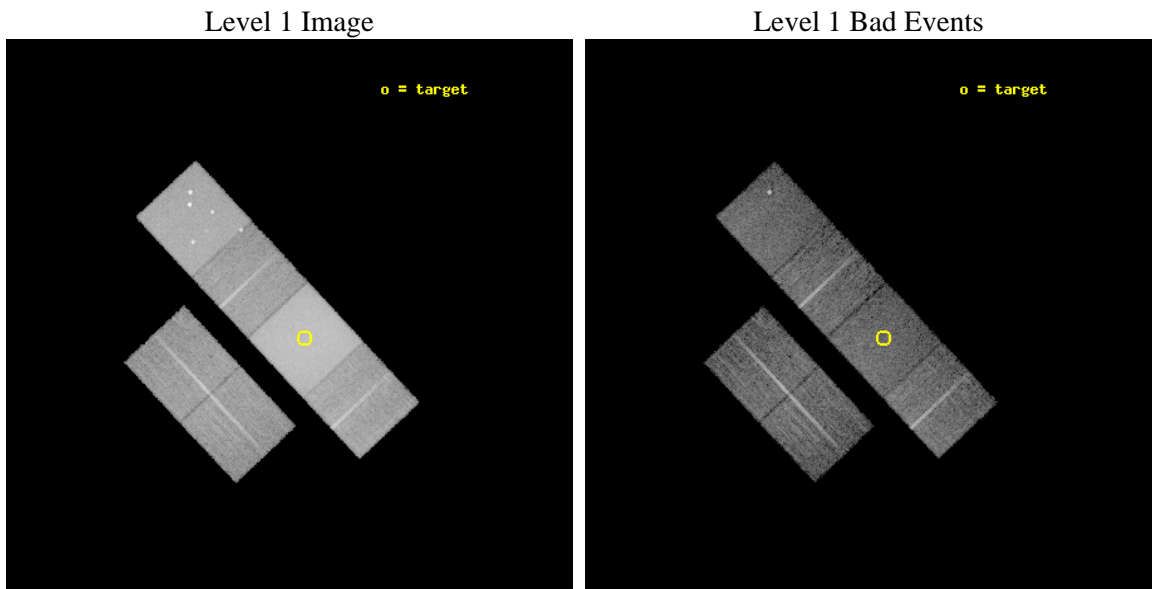
seq_num	100034	Sequence number
obs_id	3447	Observation id
title	SPECTROSCOPIC IMAGING OF CHARGE EXCHANGE X-RAY EMISSION FROM COMET C/2002 C1	Proposal title
observer	Dr. Konrad Dennerl	Principal investigator
object	C/2002 C1	Source name
dtcycle	0	
cycle	P	events from which exps? Prim/Second/Both
ra_targ	352.61117	Observer's specified target RA [deg]
dec_targ	54.91261	Observer's specified target Dec [deg]
ra_nom	352.65787677103	Nominal RA [deg]
dec_nom	54.938664175325	Nominal Dec [deg]
roll_nom	46.918421362648	Nominal Roll [deg]
revision	3	Processing version of data
ontime	11717.084369898	Sum of GTIs [s]
livetime	11568.715592425	Livetime [s]
ontime2	11717.125409901	Sum of GTIs [s]
ontime3	11716.961249888	Sum of GTIs [s]
ontime5	11717.043329895	Sum of GTIs [s]
ontime6	11717.002289891	Sum of GTIs [s]
ontime7	11717.084369898	Sum of GTIs [s]
ontime8	11716.920209914	Sum of GTIs [s]
l2events	350563	Number of level 2 events



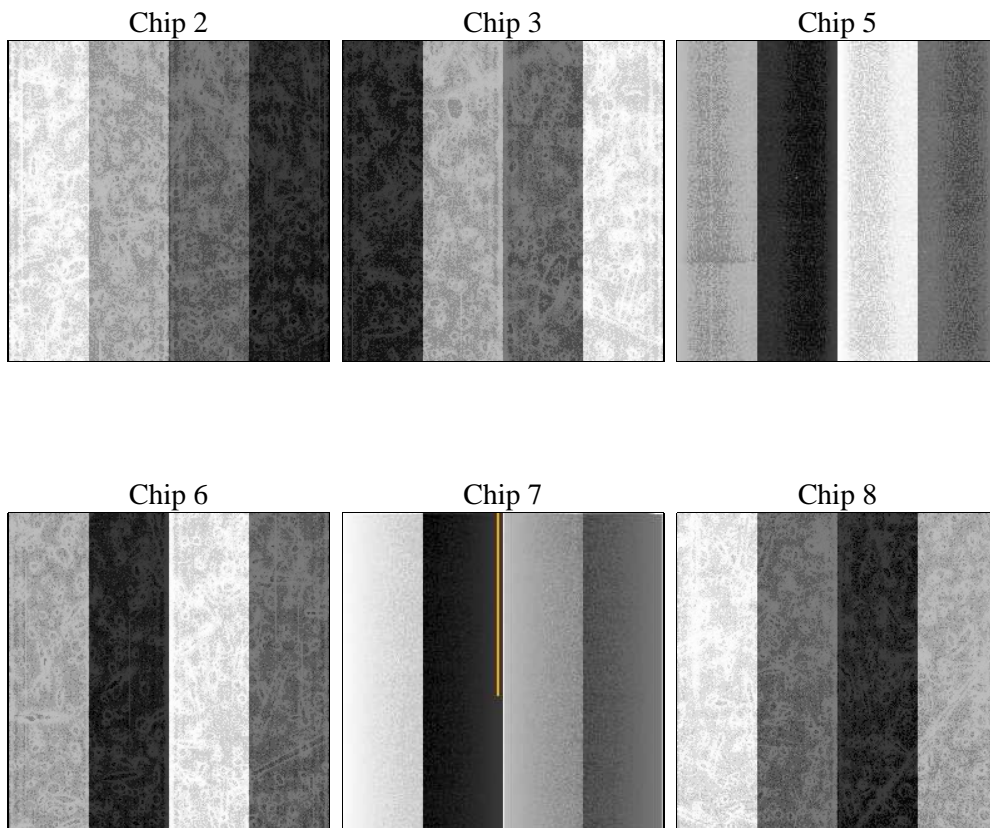
2 OBI

2.1 OBI

2.1.1 Images



2.1.2 Bias



2.1.3 Parameters

obi_num	0	Obi number	sched_exp_time	11760.000000	[s] Scheduled observation exposure time
ascdsver	8.4.5	Processing system revision	ontime	11717.084369898	Sum of GTIs [s]
caldsver	4.5.2	 	ontime2	11717.125409901	Sum of GTIs [s]
date	2012-10-05T14:49:06	Date and time of file creation	ontime3	11716.961249888	Sum of GTIs [s]
revision	3	Processing version of data	ontime5	11717.043329895	Sum of GTIs [s]
			ontime6	11717.002289891	Sum of GTIs [s]
			ontime7	11717.084369898	Sum of GTIs [s]
			ontime8	11716.920209914	Sum of GTIs [s]
			l1events	771954	Number of level 1 events

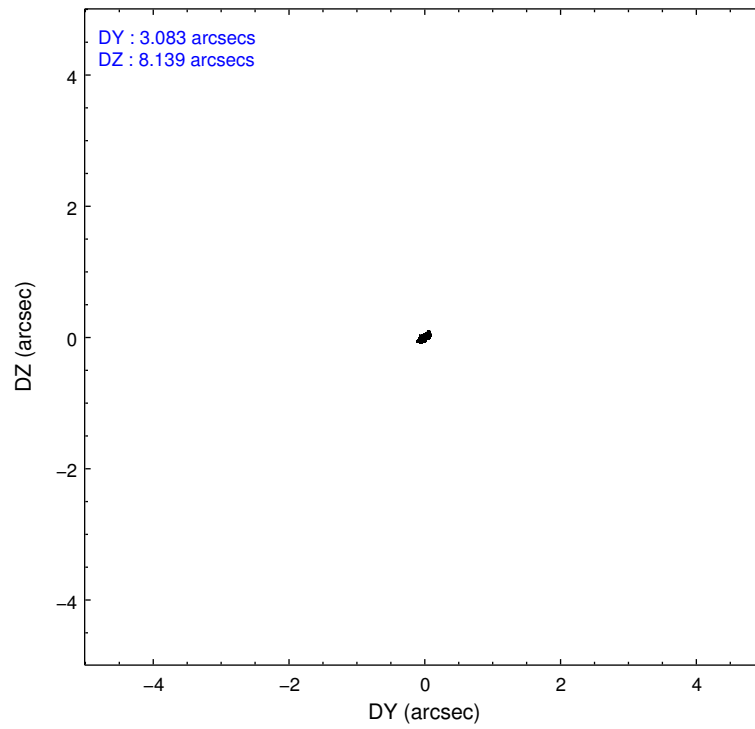
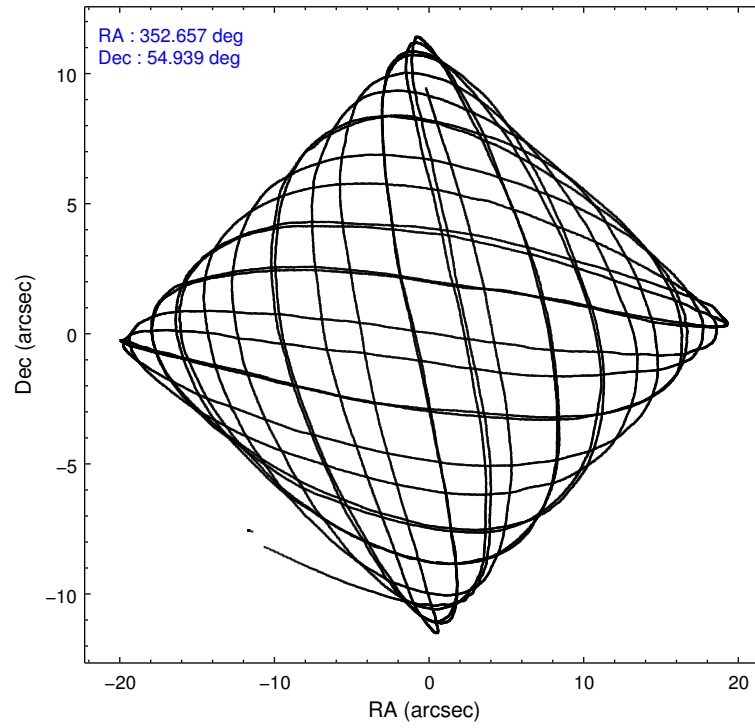
2.1.4 Events

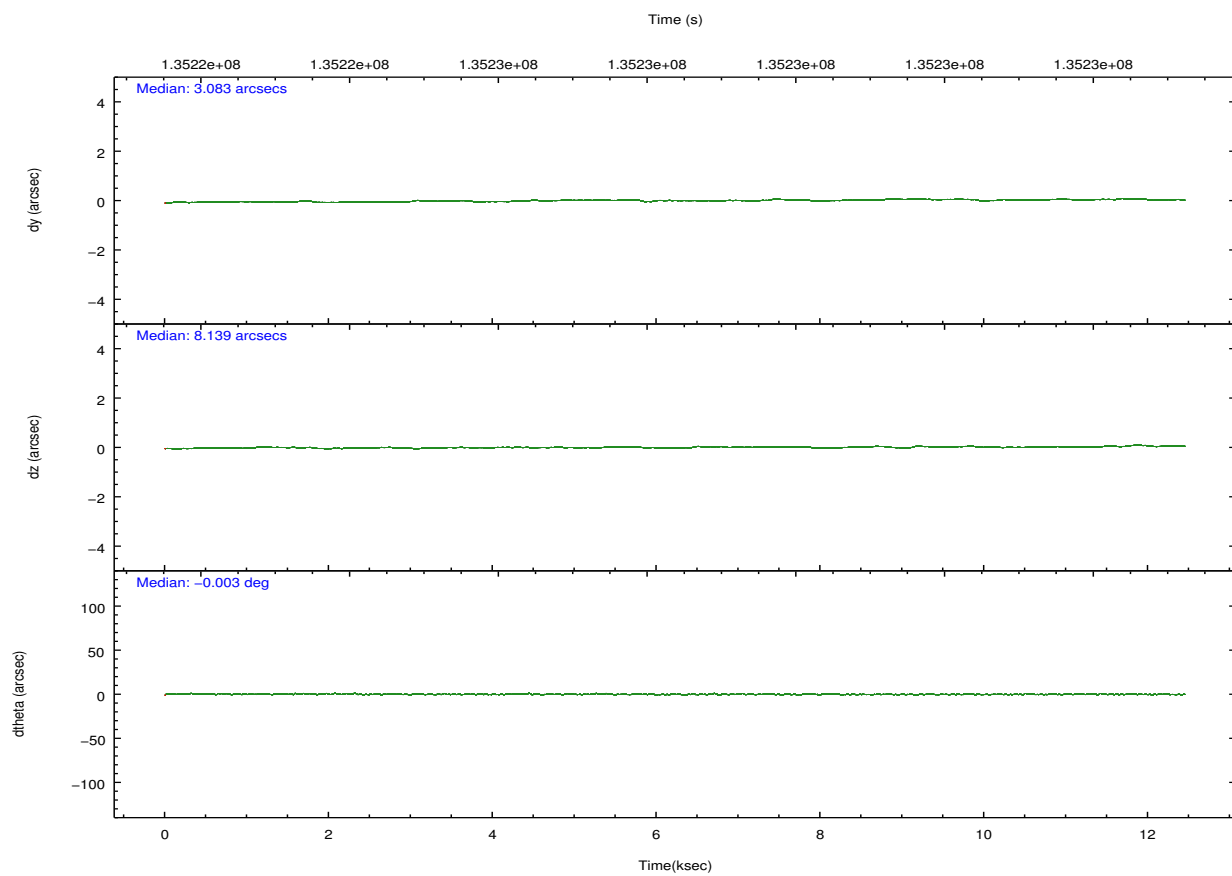
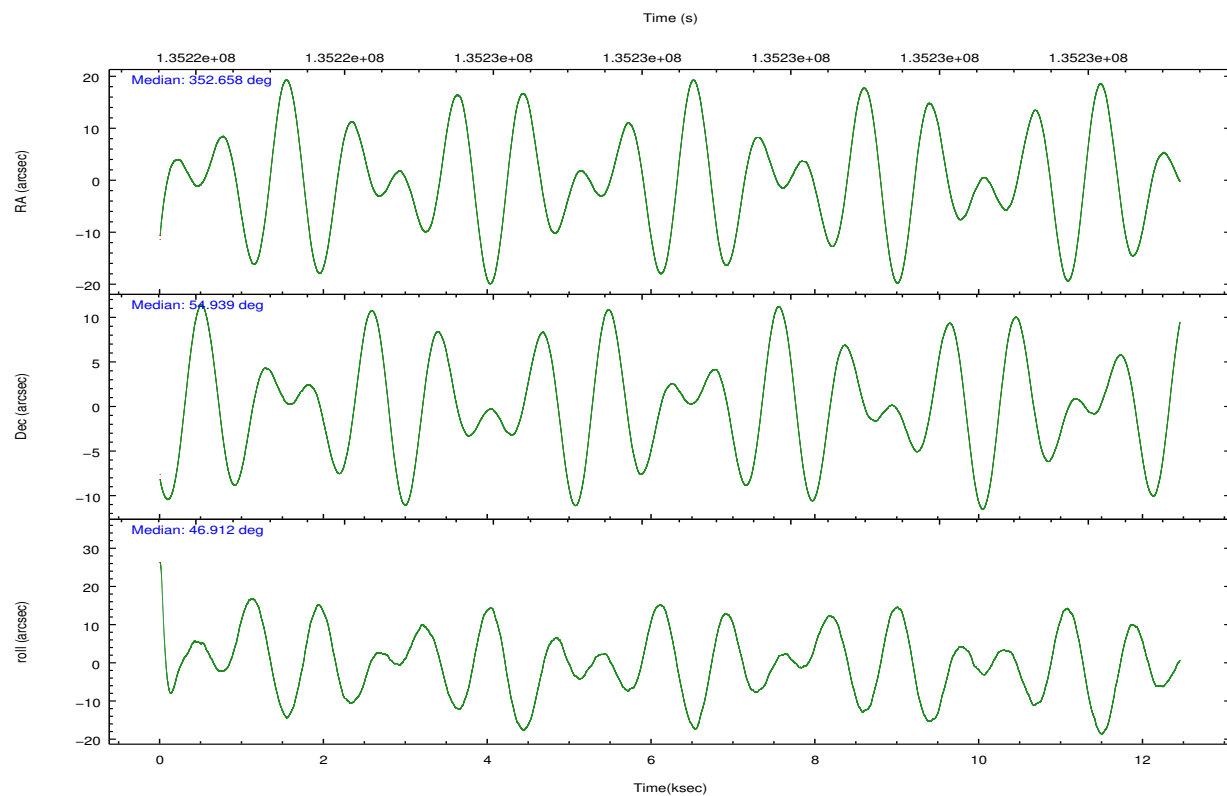
	ccd 2	ccd 3	ccd 5	ccd 6	ccd 7	ccd 8		ccd 2	ccd 3	ccd 5	ccd 6	ccd 7	ccd 8
level 1 events	85345	83876	144946	99474	244243	114070	grade 0 events	12263	12948	27587	25953	72188	24231
rejected events	67256	64995	59111	66523	58413	74313		14%	15%	19%	26%	29%	21%
rejected %	78%	77%	40%	66%	23%	65%	grade 1 events	61	63	177	107	131	123
								0%	0%	0%	0%	0%	0%
							grade 2 events	2474	2319	22169	3043	42906	5382
								2%	2%	15%	3%	17%	4%
							grade 3 events	889	976	4676	1052	19163	2410
								1%	1%	3%	1%	7%	2%
							grade 4 events	900	928	4346	1053	18713	2351
								1%	1%	2%	1%	7%	2%
							grade 5 events	2747	3022	8599	3247	10273	4191
								3%	3%	5%	3%	4%	3%
							grade 6 events	1571	1716	27115	1867	32934	5407
								1%	2%	18%	1%	13%	4%
							grade 7 events	64440	61904	50277	63152	47935	69975
								75%	73%	34%	63%	19%	61%

2.2 Compared Parameters

Parameter	Planned	Actual	Parameter	Planned	Actual
Instrument	ACIS	ACIS	Obspar format version number	7	7
Detector	ACIS-235678	ACIS-235678	Obspar file type	PREDICTED	ACTUAL
Grating	NONE	NONE	Obspar update status	NONE	UPDATED
Data mode	VFAINT	VFAINT	Number of optional ACIS chips dropped	0	0
Observation mode	POINTING	POINTING	On-chip summing requested	N	N
[deg] Pointing RA	352.647702	352.6578767710336	Subarray requested	NONE	NONE
[deg] Pointing Dec	54.912084	54.93866417532462	Alternating exposures requested	N	N
[deg] Pointing Roll	46.770100	46.91842136264769	[s] Primary exposure time	0.000000	3.2
[s] Window start time (MET)	135216124.184000	135216124.184000			
[s] Window stop time (MET)	135388924.184000	135388924.184000			
[mm] SIM focus pos	-0.684267	-0.6828225247311905			
[mm] SIM defocus	0	0.001444936568705701			
[mm] SIM translation stage pos	-190.132523	-190.1425803651734			
[mm] SIM translation stage offset	0	0.01005778216563158			
[s] Observation start time (MET)	135222842.184000	135221629.7876			
Observation start date	2002-04-15T01:52:58	2002-04-15T01:33:49			
[s] Observation end time (MET)	135234602.184000	135235408.86316			
Observation end date	2002-04-15T05:08:58	2002-04-15T05:23:28			
Read mode	TIMED	TIMED			

2.3 Aspect



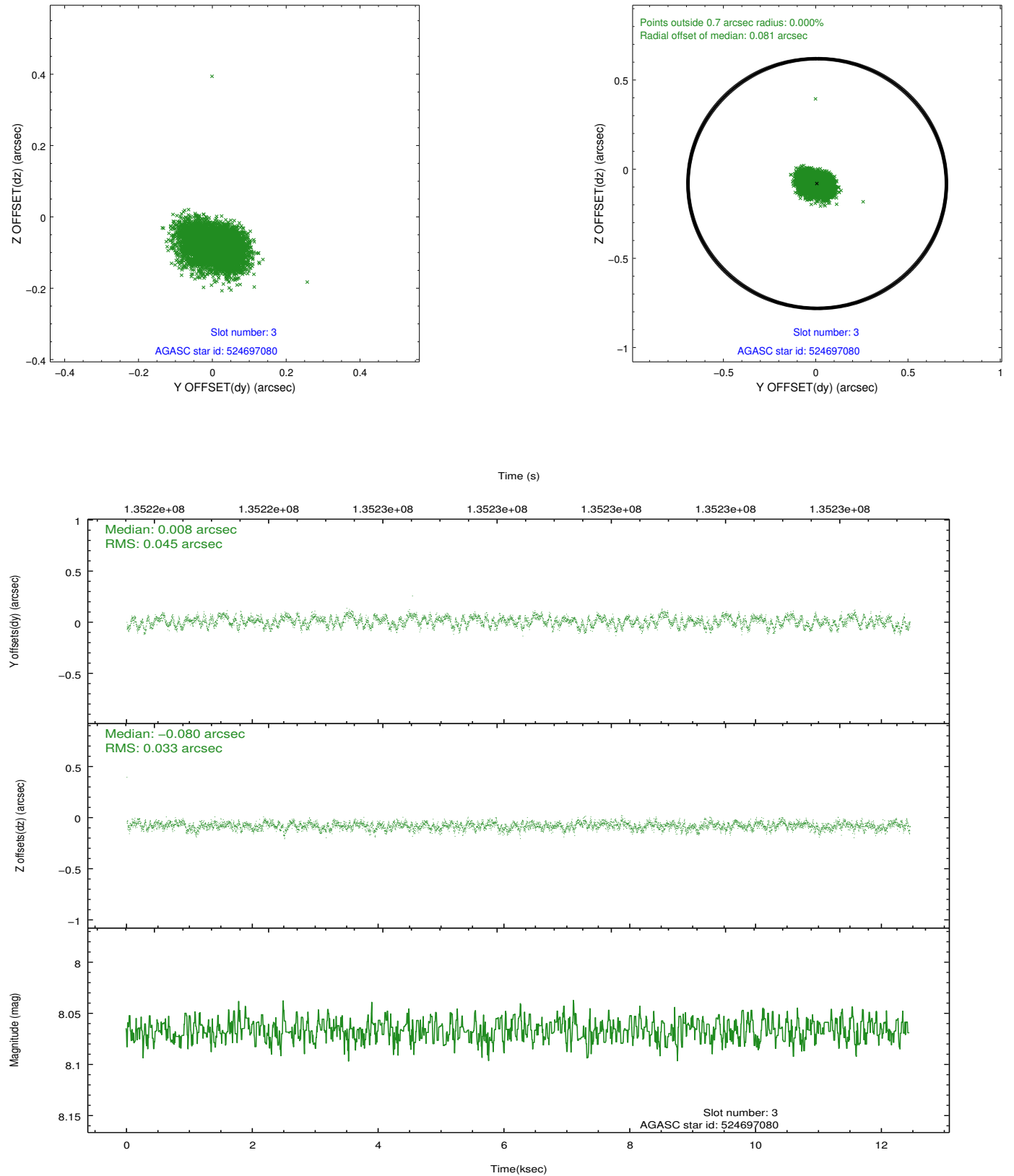


Slot Statistics

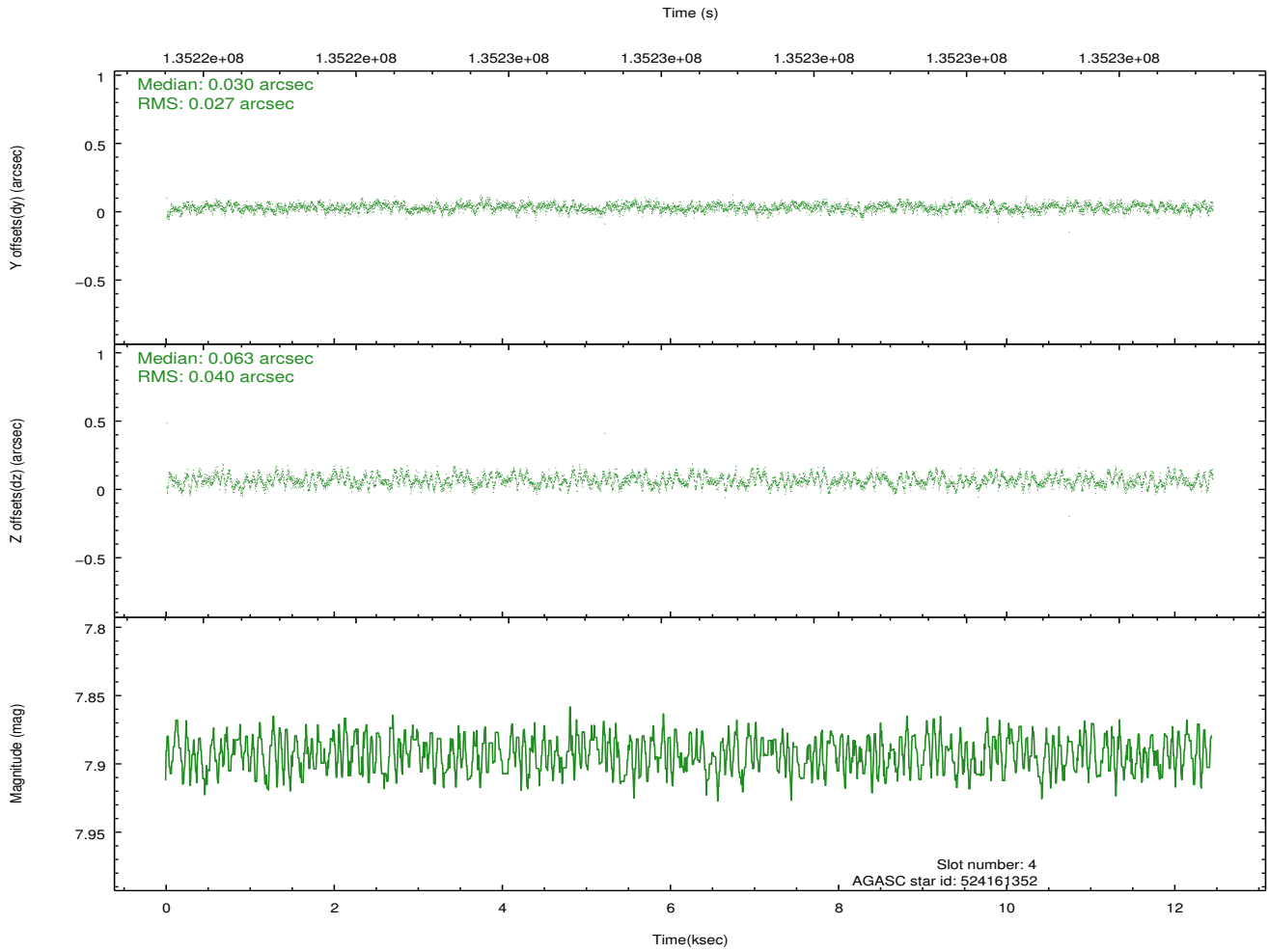
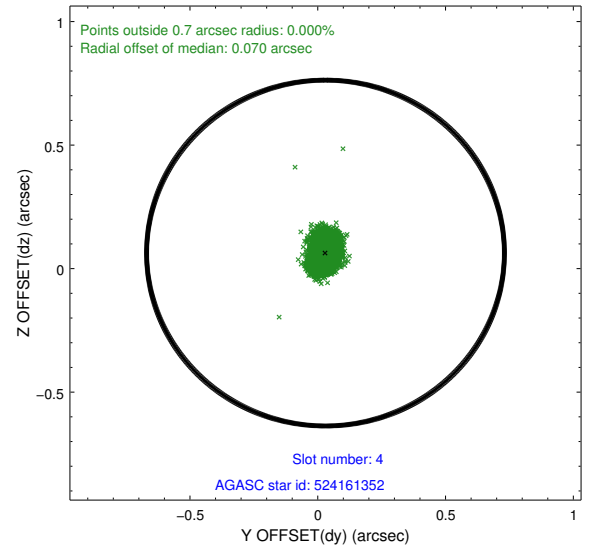
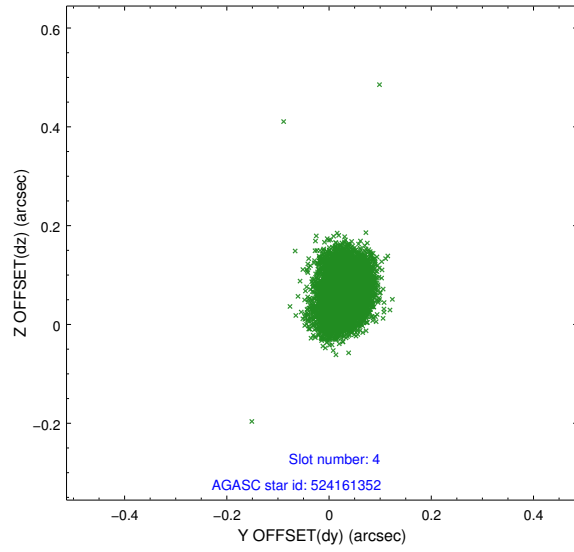
slot	status	id	mag	n_pts	med_dy	med_dz	dr1	dr2	ra	dec	mean_y	mean_z
0	FID	ACIS-S-3	7.36	3037	-0.075	-0.044	0.007	0.012	0.000000	0.000000	57.35	-1858.39
1	FID	ACIS-S-4	7.20	3037	-0.006	0.061	0.006	0.010	0.000000	0.000000	2157.64	178.76
2	FID	ACIS-S-5	7.24	3037	0.052	-0.007	0.006	0.010	0.000000	0.000000	-1808.00	172.95
3	GUIDE	524697080	8.07	6073	0.008	-0.080	0.060	0.095	351.714424	54.973814	-1149.27	1564.98
4	GUIDE	524161352	7.89	6070	0.030	0.063	0.051	0.084	352.951417	54.177997	-1485.71	-2276.10
5	GUIDE	524697864	8.19	6074	-0.012	-0.020	0.055	0.087	352.501566	55.266391	724.32	1091.09
6	GUIDE	524159672	9.10	6070	0.002	0.070	0.087	0.137	352.949522	54.208836	-1407.62	-2196.86
7	GUIDE	524699952	9.08	6071	-0.026	-0.032	0.083	0.132	352.075073	55.341435	326.66	1914.97

2.4 Star Slots

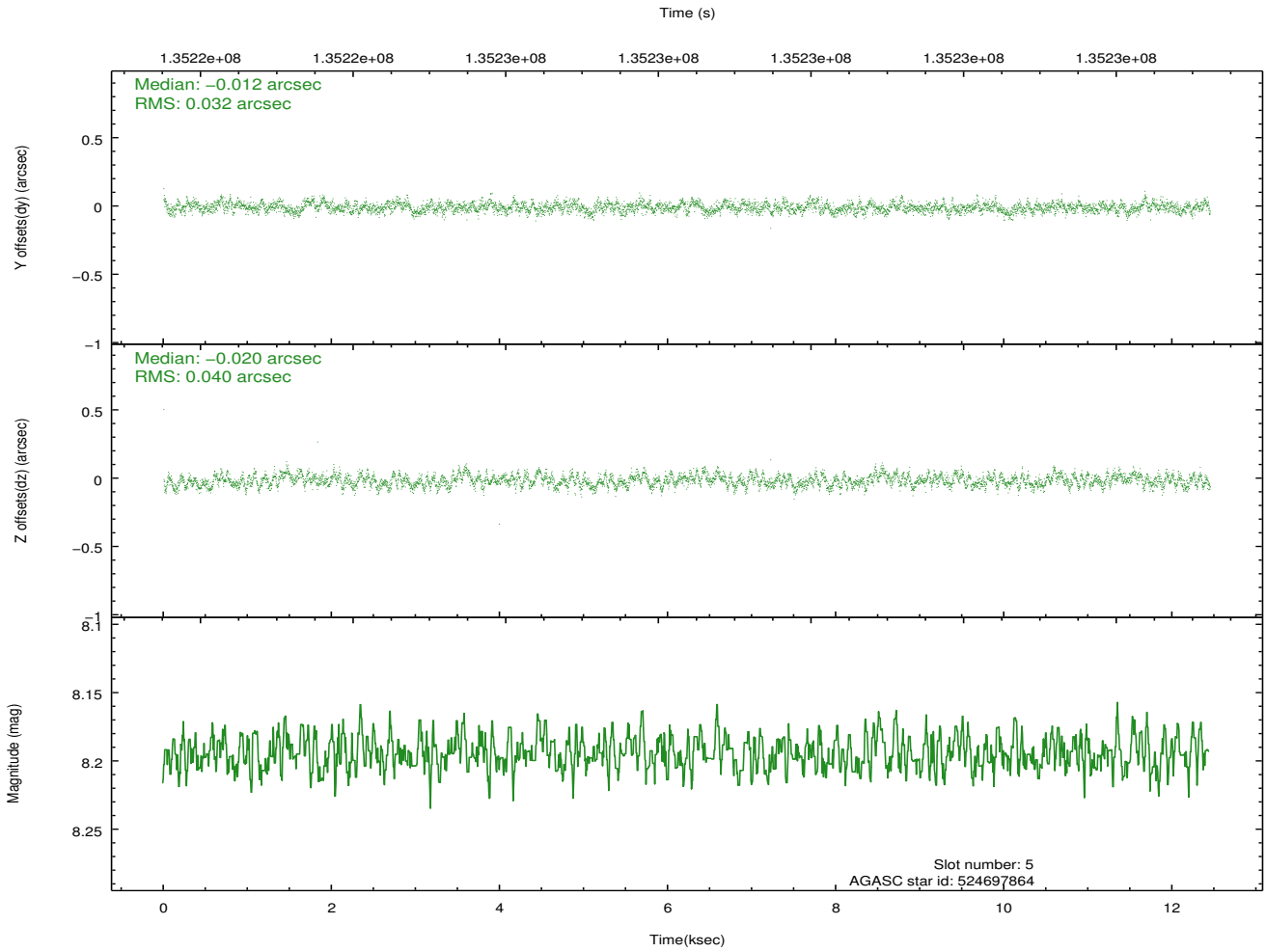
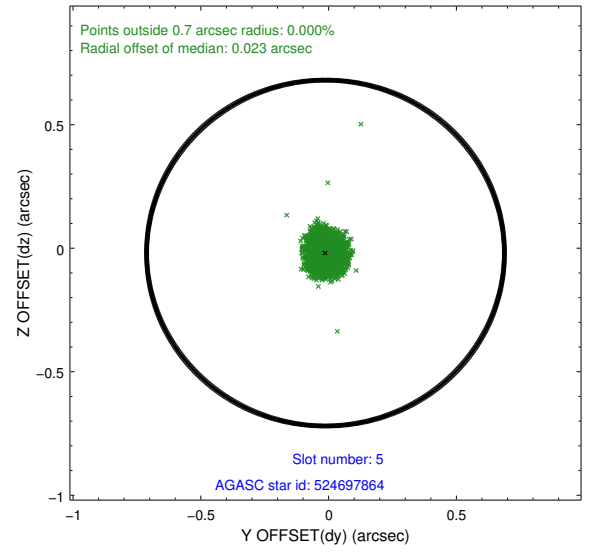
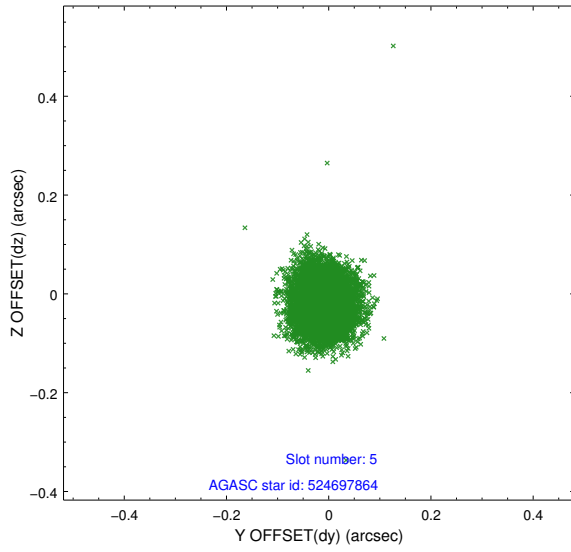
2.4.1 Slot 3



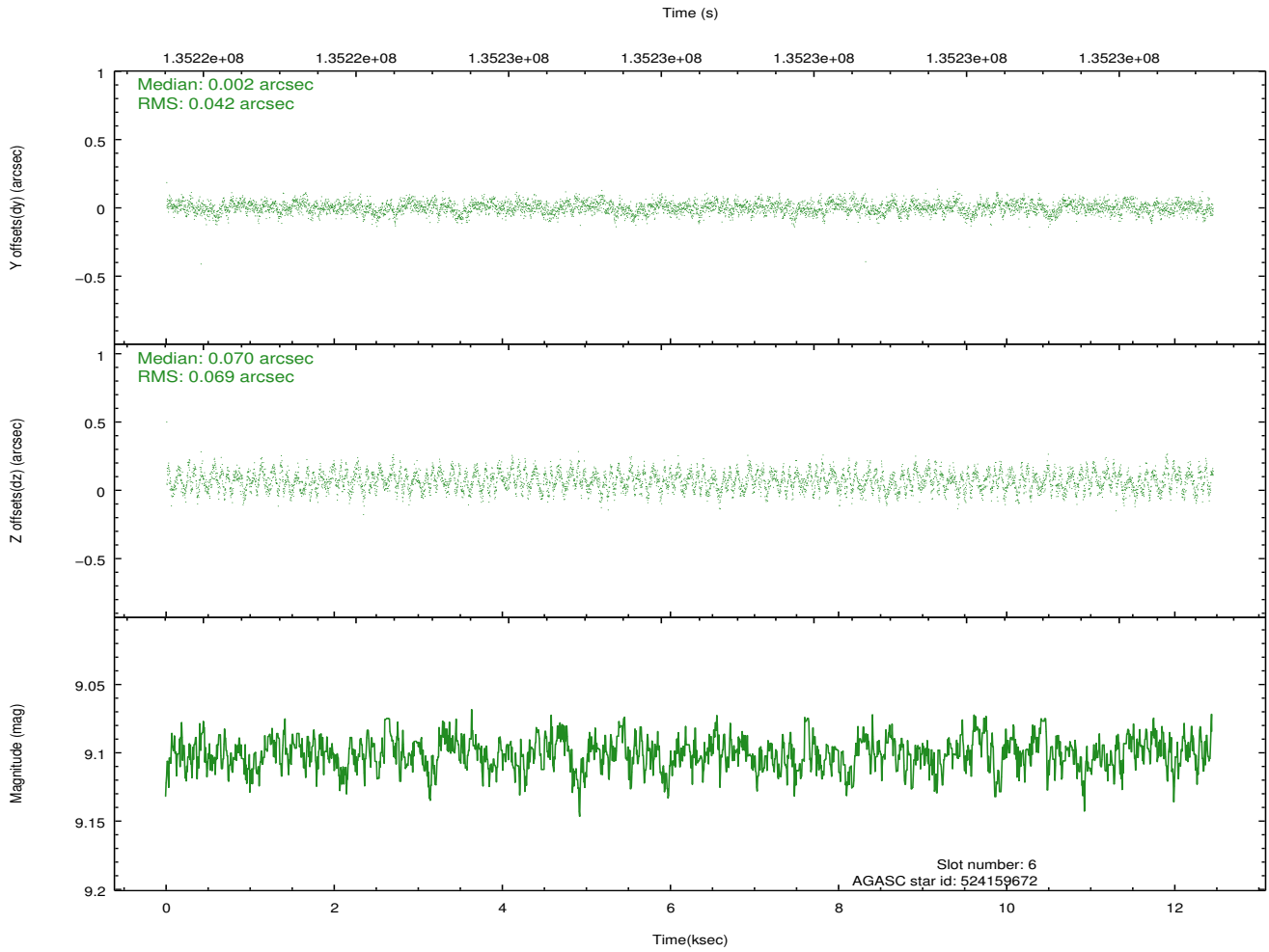
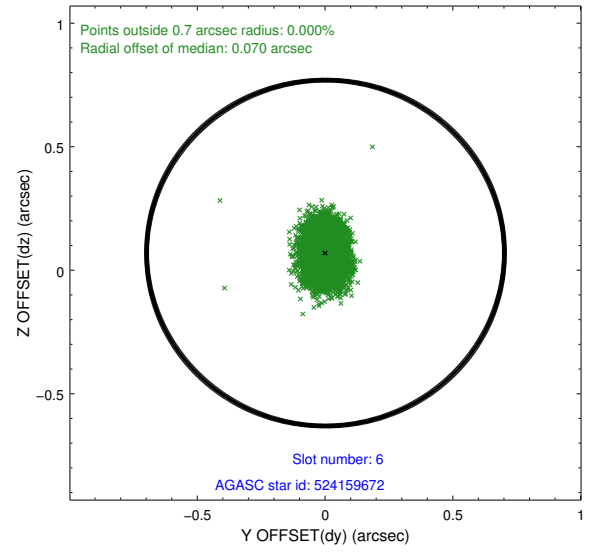
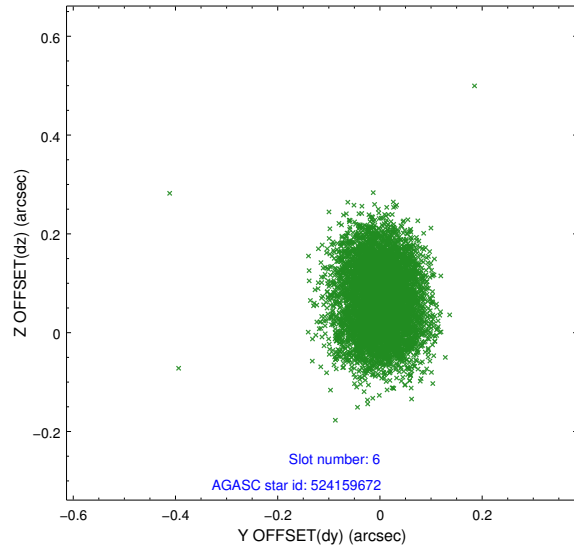
2.4.2 Slot 4



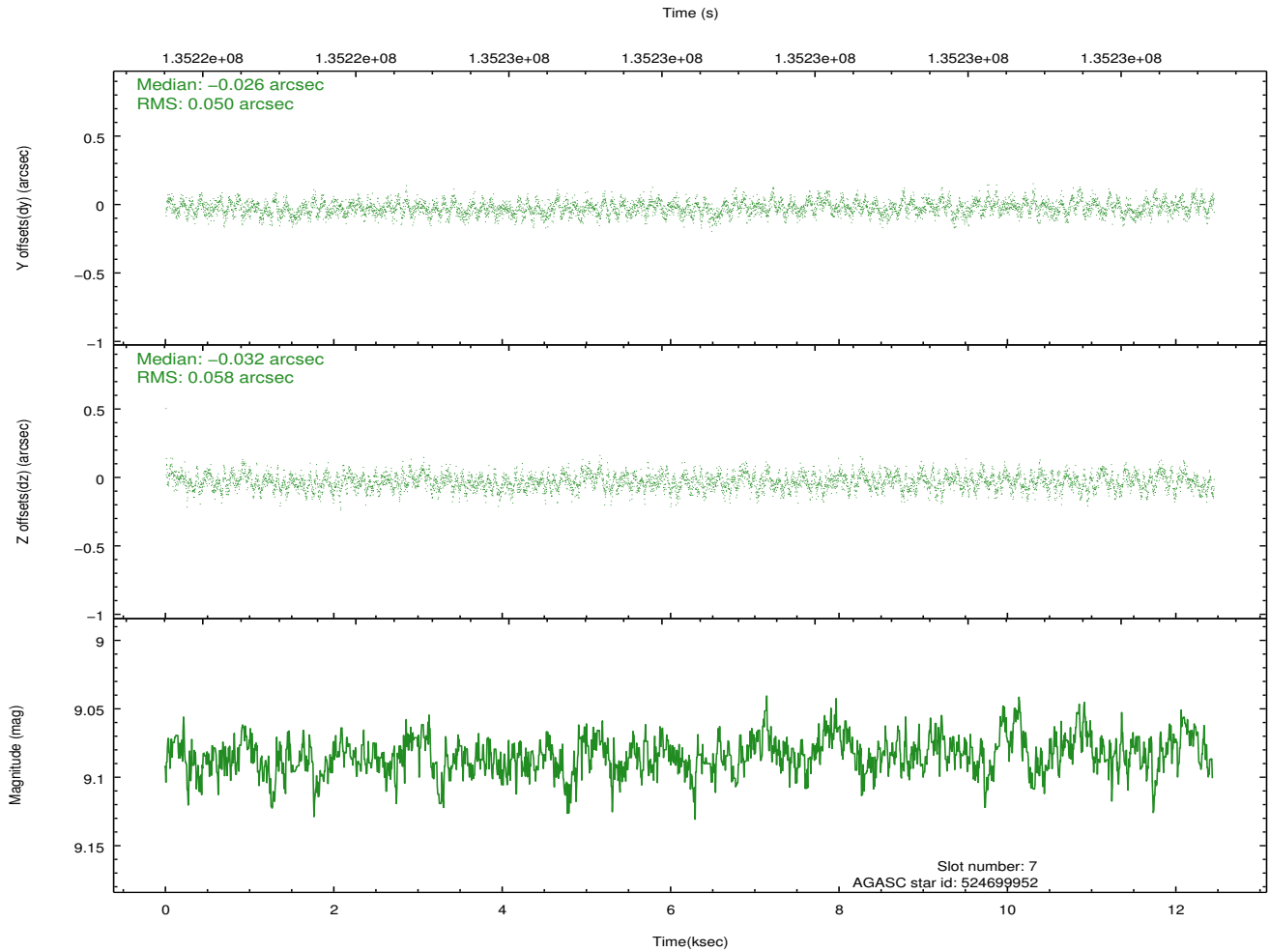
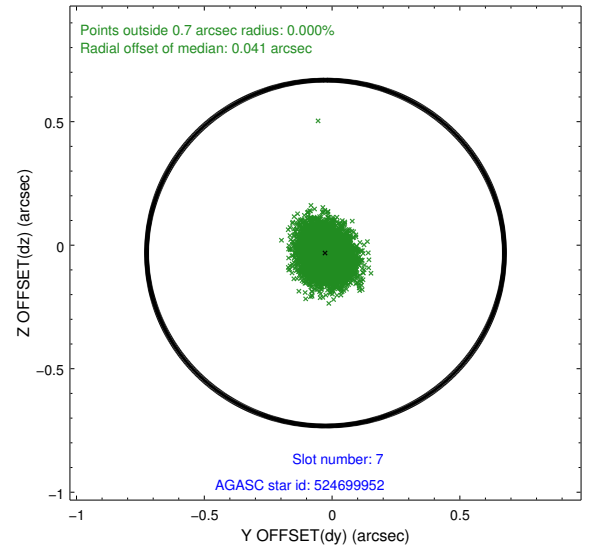
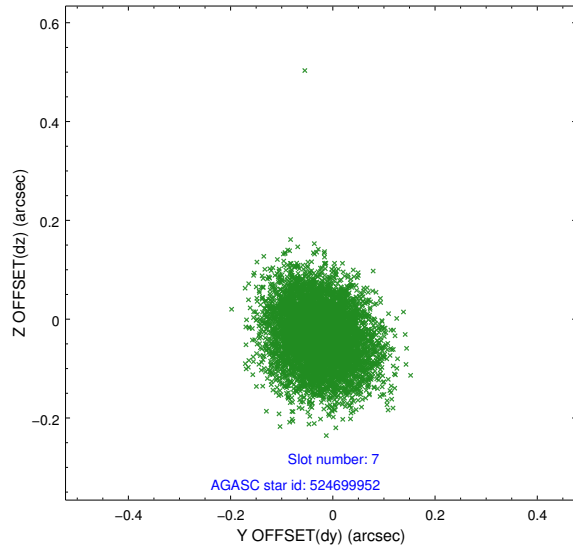
2.4.3 Slot 5



2.4.4 Slot 6

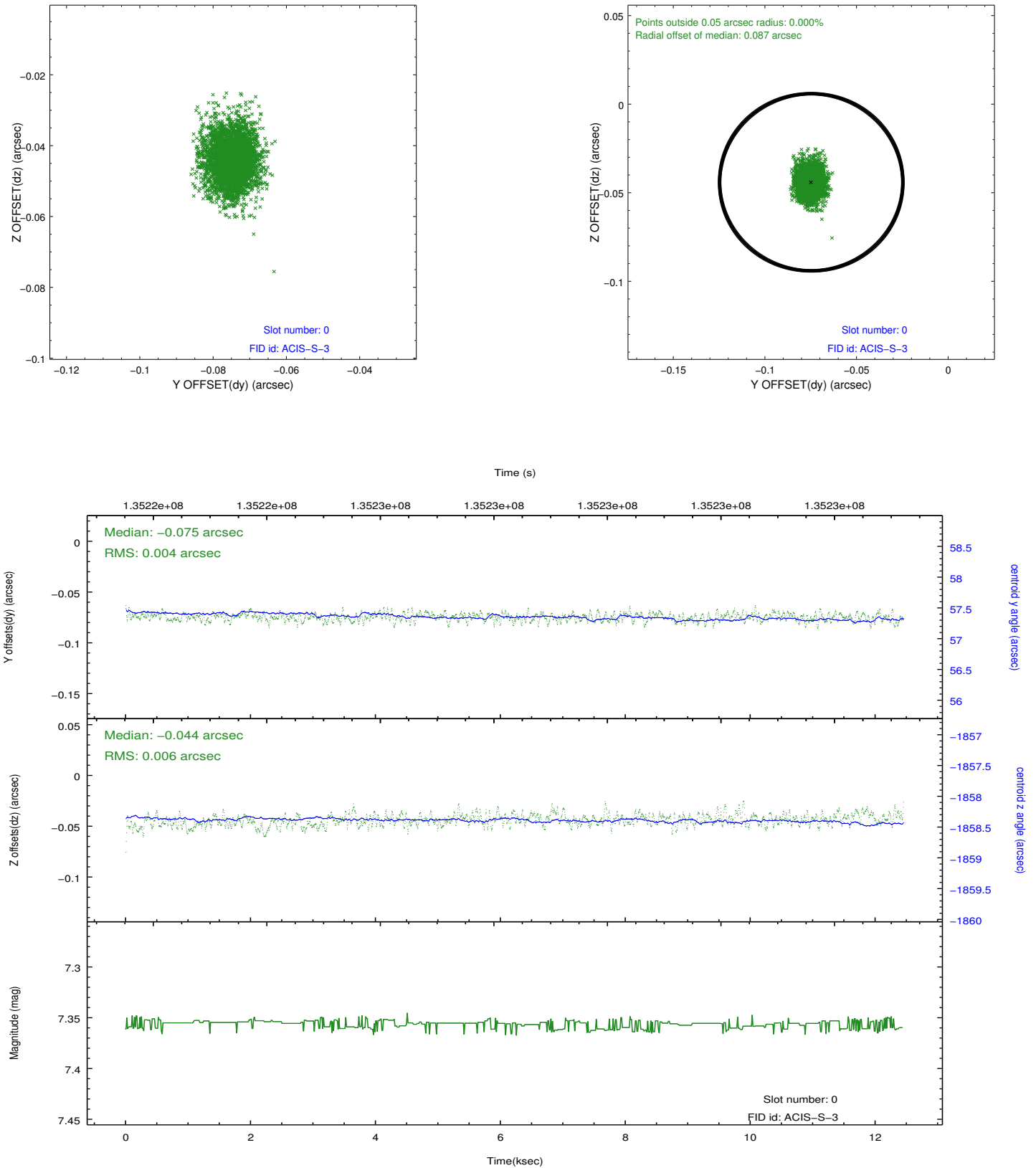


2.4.5 Slot 7

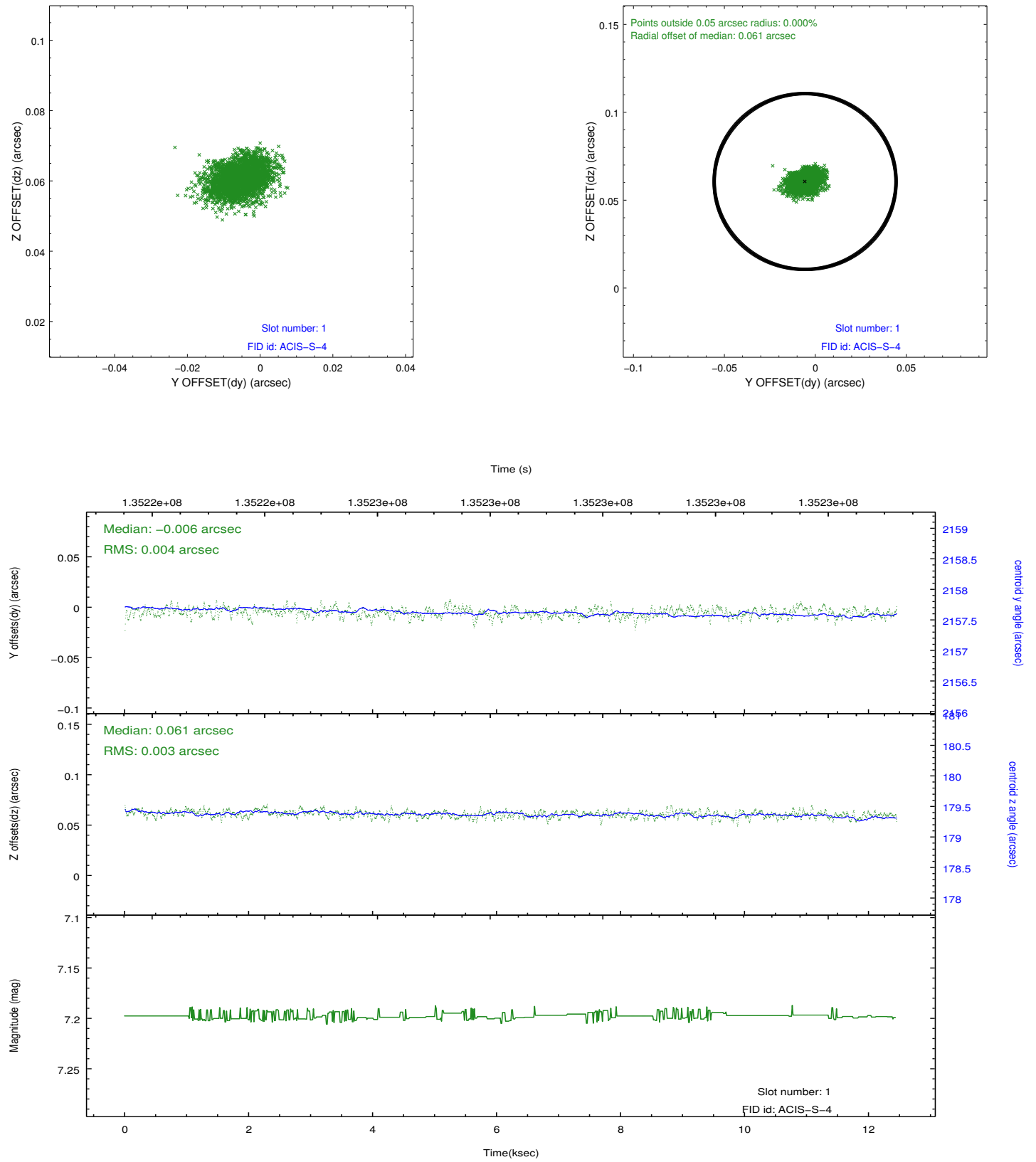


2.5 FID Slots

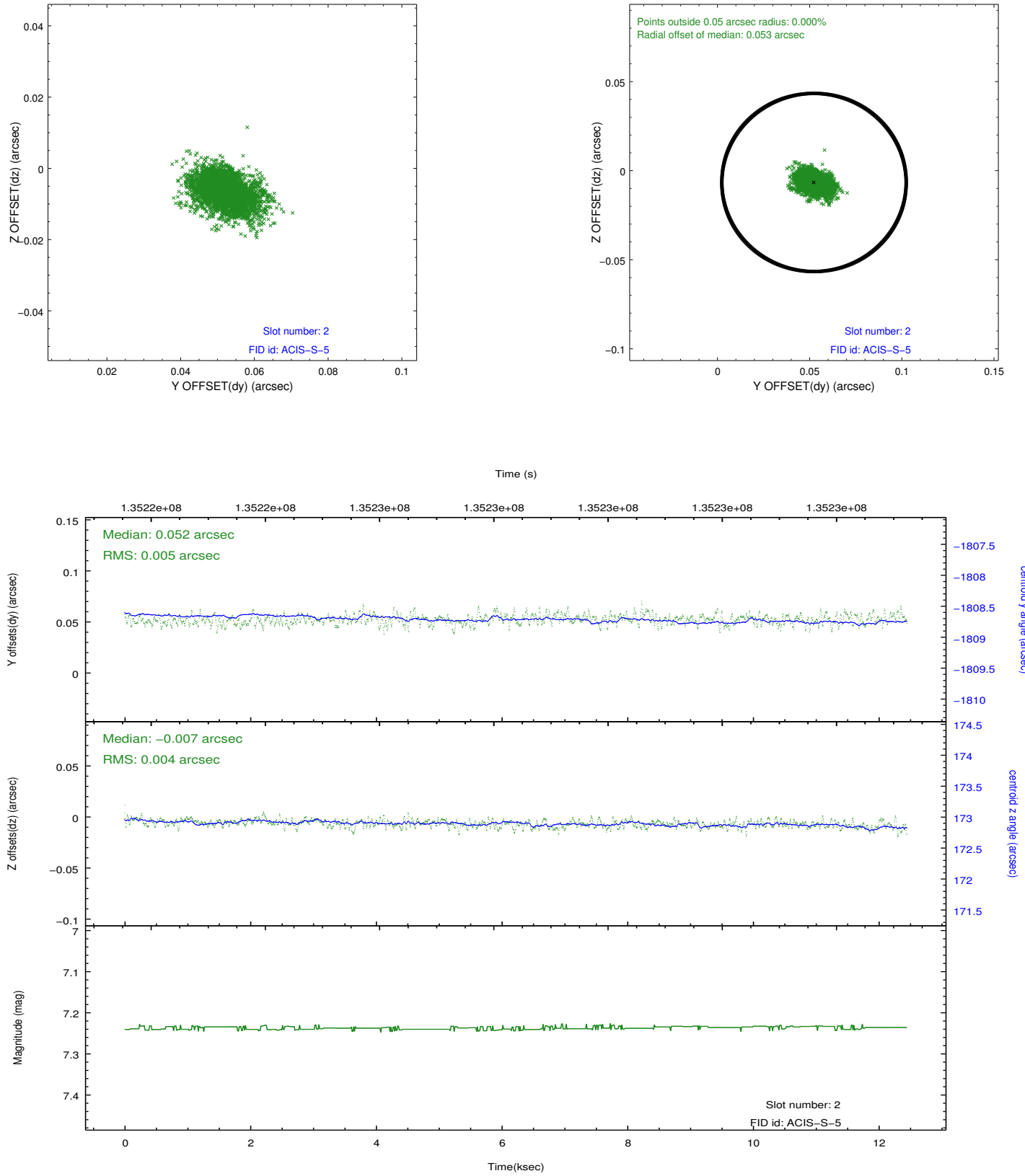
2.5.1 Slot 0



2.5.2 Slot 1



2.5.3 Slot 2



A Summary

A.1 Status

V&V Scientist	Beth Sundheim
V&V Date (YYYY-MM-DD)	2012.10.11
V&V Edition	1
V&V Disposition and Status	OK
V&V Charge Time	11.718

A.2 Comments

Window preference met.