

V&V Reference Report

L2 ASCDS Version : 7.6.8.1

Observation 3447 - L2 Version 001
Chandra X-Ray Center

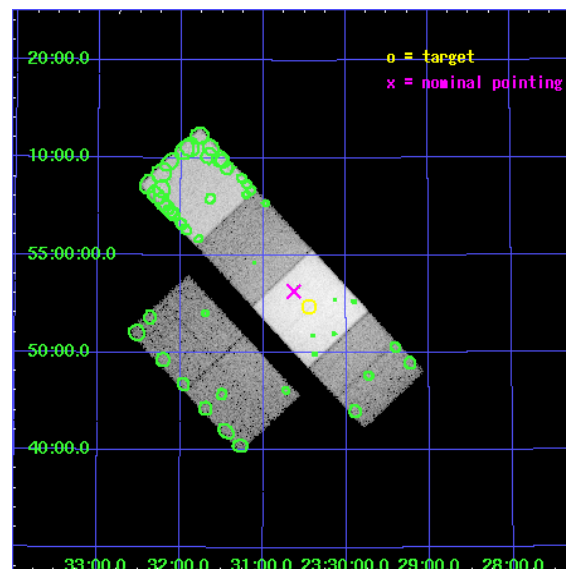
L2 Processing Date : Sep 11 2006

Contents

1	Front	2
2	OBI	3
2.1	OBI	3
2.1.1	Images	3
2.1.2	Bias	3
2.1.3	Parameters	4
2.1.4	Events	4
2.2	Compared Parameters	5
2.3	Aspect	6
2.4	Star Slots	9
2.4.1	Slot 3	9
2.4.2	Slot 4	10
2.4.3	Slot 5	11
2.4.4	Slot 6	12
2.4.5	Slot 7	13
2.5	FID Slots	14
2.5.1	Slot 0	14
2.5.2	Slot 1	15
2.5.3	Slot 2	16
3	Point Sources	17
A	Summary	18
A.1	Status	18
A.2	Comments	18

1 Front

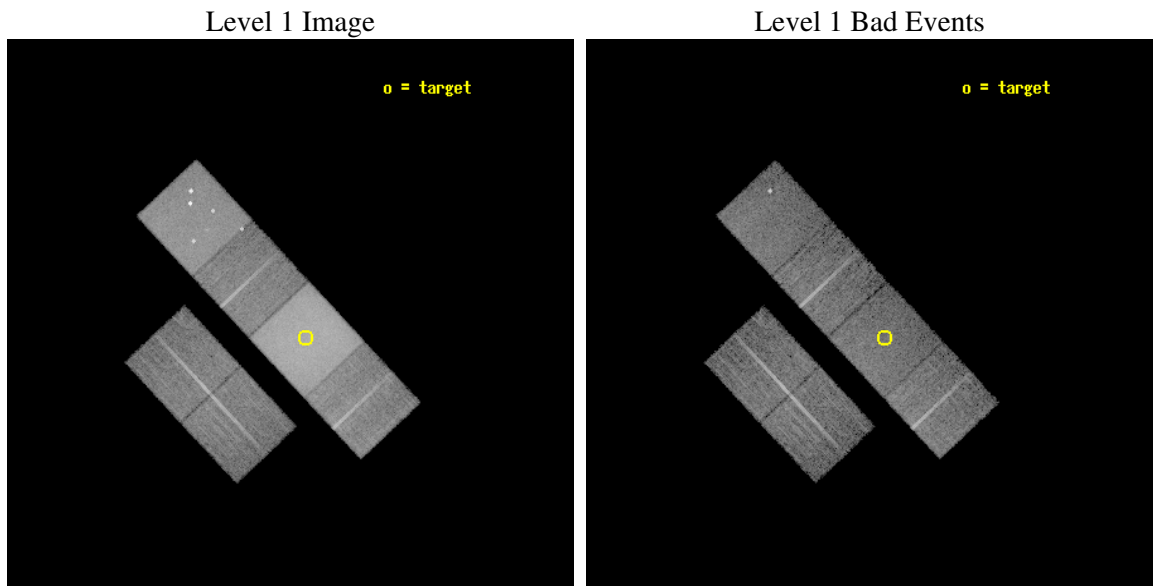
seq_num	100034
obs_id	3447
title	SPECTROSCOPIC IMAGING OF CHARGE EXCHANGE X-RAY EMISSION FROM COMET C/2002 C1
observer	Dr. Konrad Dennerl
object	C/2002 C1
dtcycle	0
cycle	P
ra_targ	352.61117
dec_targ	54.91261
ra_nom	352.65787677103
dec_nom	54.938664175325
roll_nom	46.918421362648
revision	2
ontime	11718.399956346
livetime	11570.014520125
ontime2	11718.399956346
ontime3	11718.399956346
ontime5	11718.399956346
ontime6	11718.399956346
ontime7	11718.399956346
ontime8	11718.399956346
l2events	346029



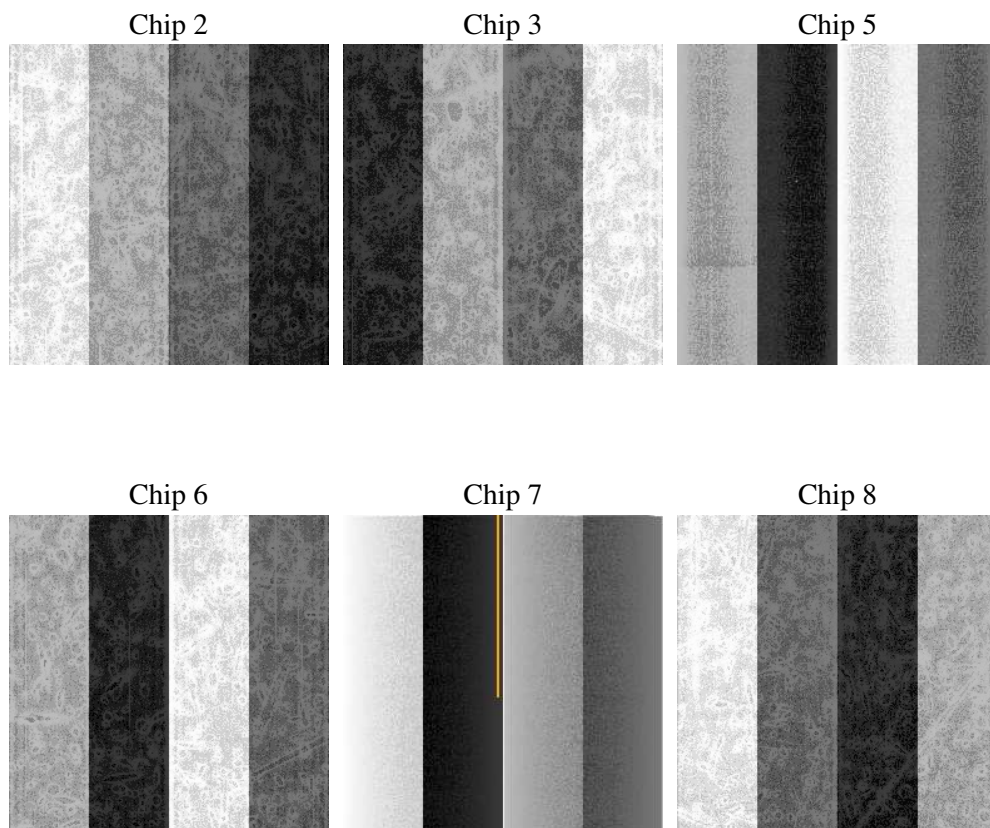
2 OBI

2.1 OBI

2.1.1 Images



2.1.2 Bias



2.1.3 Parameters

obi_num	0
ascdsver	7.6.8.1
caldsver	3.2.3
date	2006-09-11T06:34:39
revision	2

sched_exp_time	11760.000000
ontime	11722.692386866
ontime2	11722.692386866
ontime3	11722.692386866
ontime5	11722.692386866
ontime6	11722.692386866
ontime7	11722.692386866
ontime8	11725.933396935
l1events	771954

2.1.4 Events

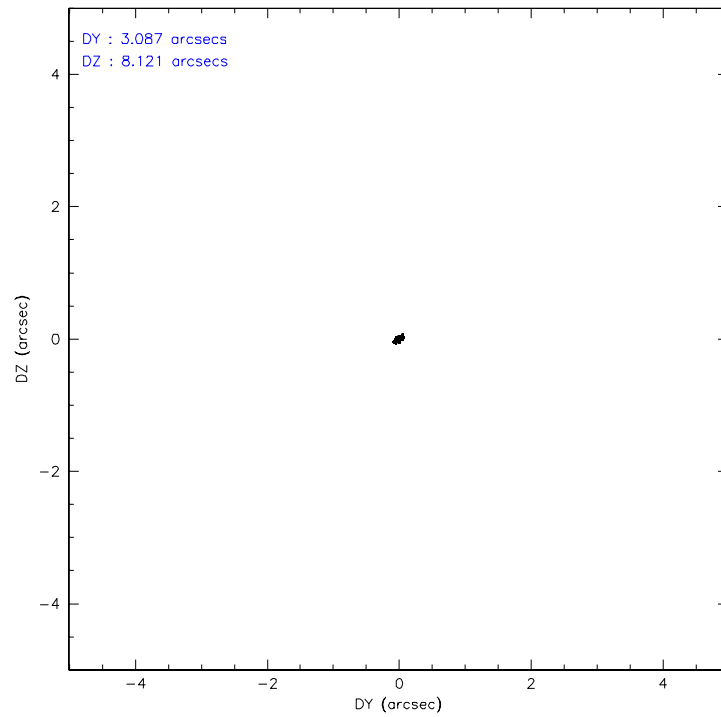
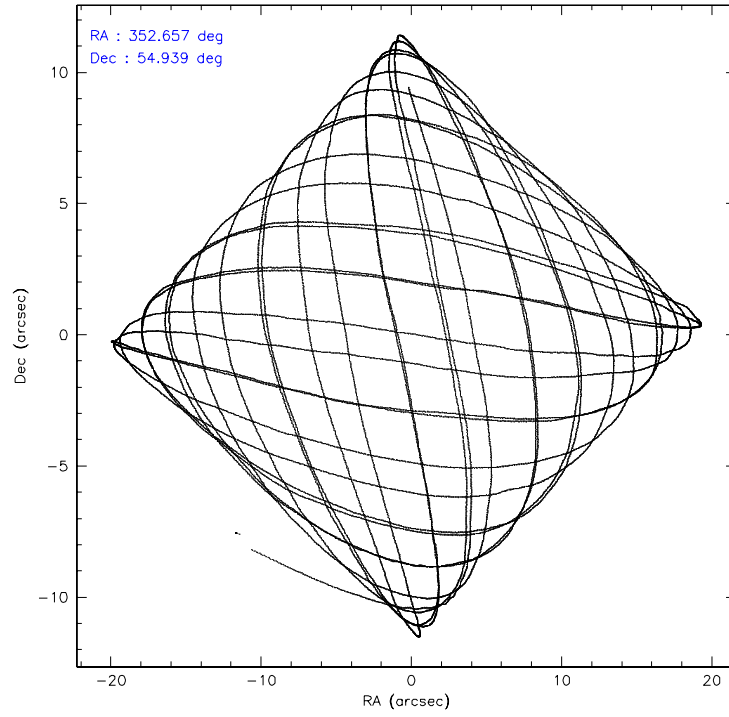
	ccd 2	ccd 3	ccd 5	ccd 6	ccd 7	ccd 8
level 1 events	85345	83876	144946	99474	244243	114070
rejected events	67254	64994	60786	66516	61475	74304
rejected %	78%	77%	41%	66%	25%	65%

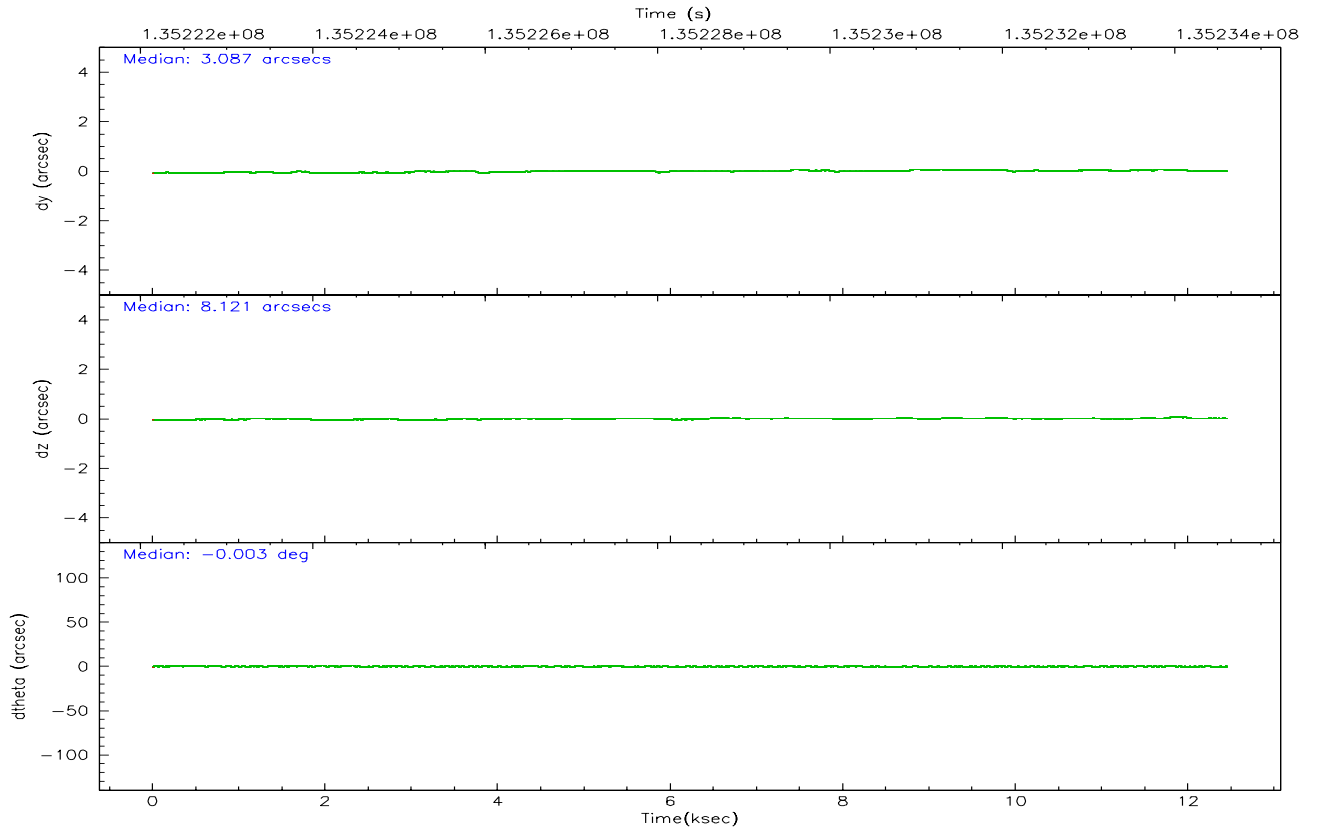
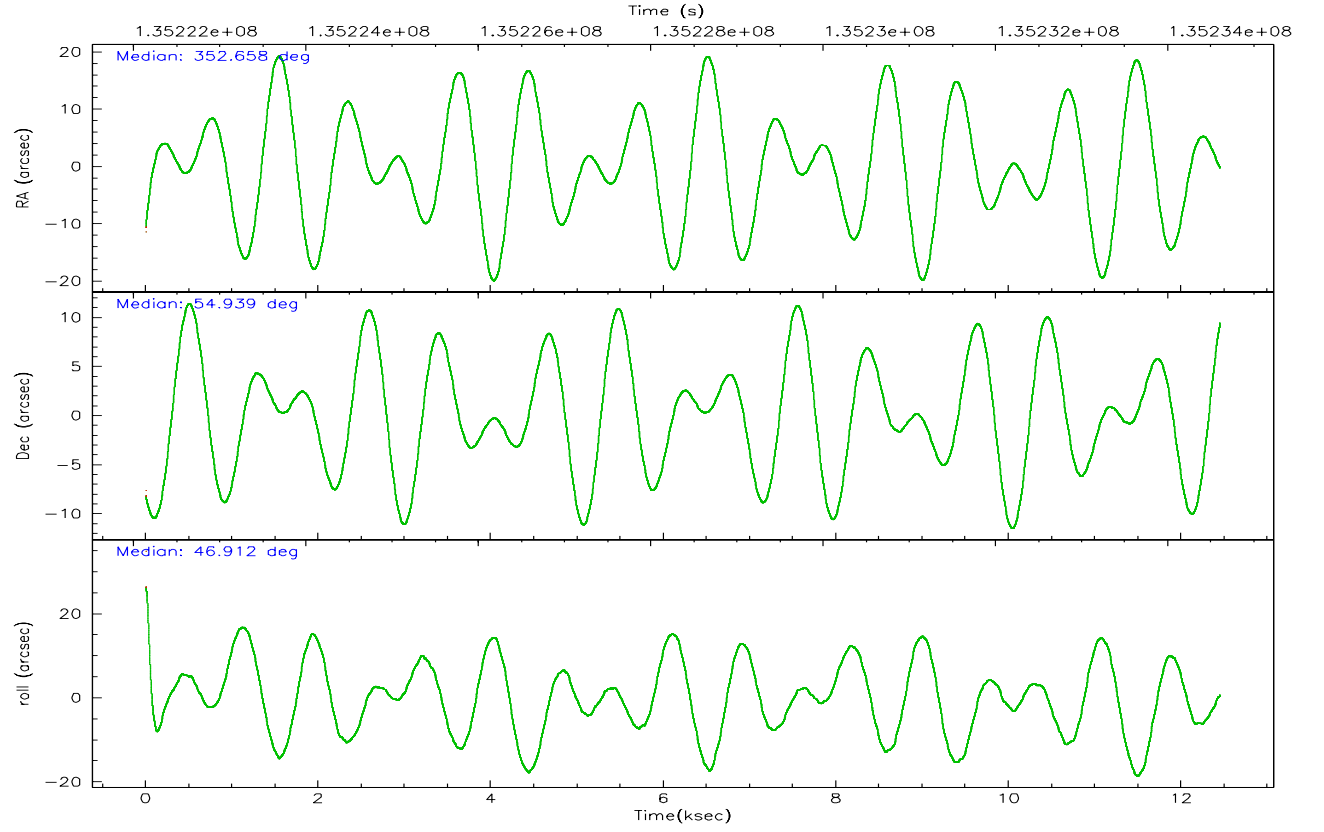
	ccd 2	ccd 3	ccd 5	ccd 6	ccd 7	ccd 8
grade 0 events	12263	12949	24742	25955	67950	24231
	14%	15%	17%	26%	27%	21%
grade 1 events	61	63	133	107	81	124
	0%	0%	0%	0%	0%	0%
grade 2 events	2474	2318	23743	3041	45777	5382
	2%	2%	16%	3%	18%	4%
grade 3 events	889	976	3645	1052	17440	2411
	1%	1%	2%	1%	7%	2%
grade 4 events	901	928	3299	1053	16852	2351
	1%	1%	2%	1%	6%	2%
grade 5 events	2747	3024	5826	3248	7505	4190
	3%	3%	4%	3%	3%	3%
grade 6 events	1570	1714	28753	1868	34784	5406
	1%	2%	19%	1%	14%	4%
grade 7 events	64440	61904	54805	63150	53854	69975
	75%	73%	37%	63%	22%	61%

2.2 Compared Parameters

Parameter	Planned	Actual	Parameter	Planned	Actual
Instrument	ACIS	ACIS	Obspar format version number	6	6
Detector	ACIS-235678	ACIS-235678	Obspar file type	PREDICTED	ACTUAL
Grating	NONE	NONE	Obspar update status	NONE	UPDATED
Data mode	VFAINT	VFAINT	On-chip summing requested	N	N
Observation mode	POINTING	POINTING	Subarray requested	NONE	NONE
Pointing RA	352.647702	352.6578767710336	Alternating exposures requested	N	N
Pointing Dec	54.912084	54.9386641753246	Primary exposure time	0.000000	3.2
Pointing Roll	46.770100	46.91842136264772			
Window start time	135216124.184000	135216124.184000			
Window stop time	135388924.184000	135388924.184000			
SIM focus pos (mm)	-0.684267	-0.6828225247311905			
SIM defocus (mm)	0	0.001444936568705701			
SIM translation stage pos (mm)	-190.132523	-190.1425803651734			
SIM translation stage offset (mm)	0	0.01005778216563158			
Observation start time	135222842.184000	135221629.7876			
Observation start date	2002-04-15T01:52:58	2002-04-15T01:33:49			
Observation end time	135234602.184000	135235408.86316			
Observation end date	2002-04-15T05:08:58	2002-04-15T05:23:28			
Read mode	TIMED	TIMED			

2.3 Aspect



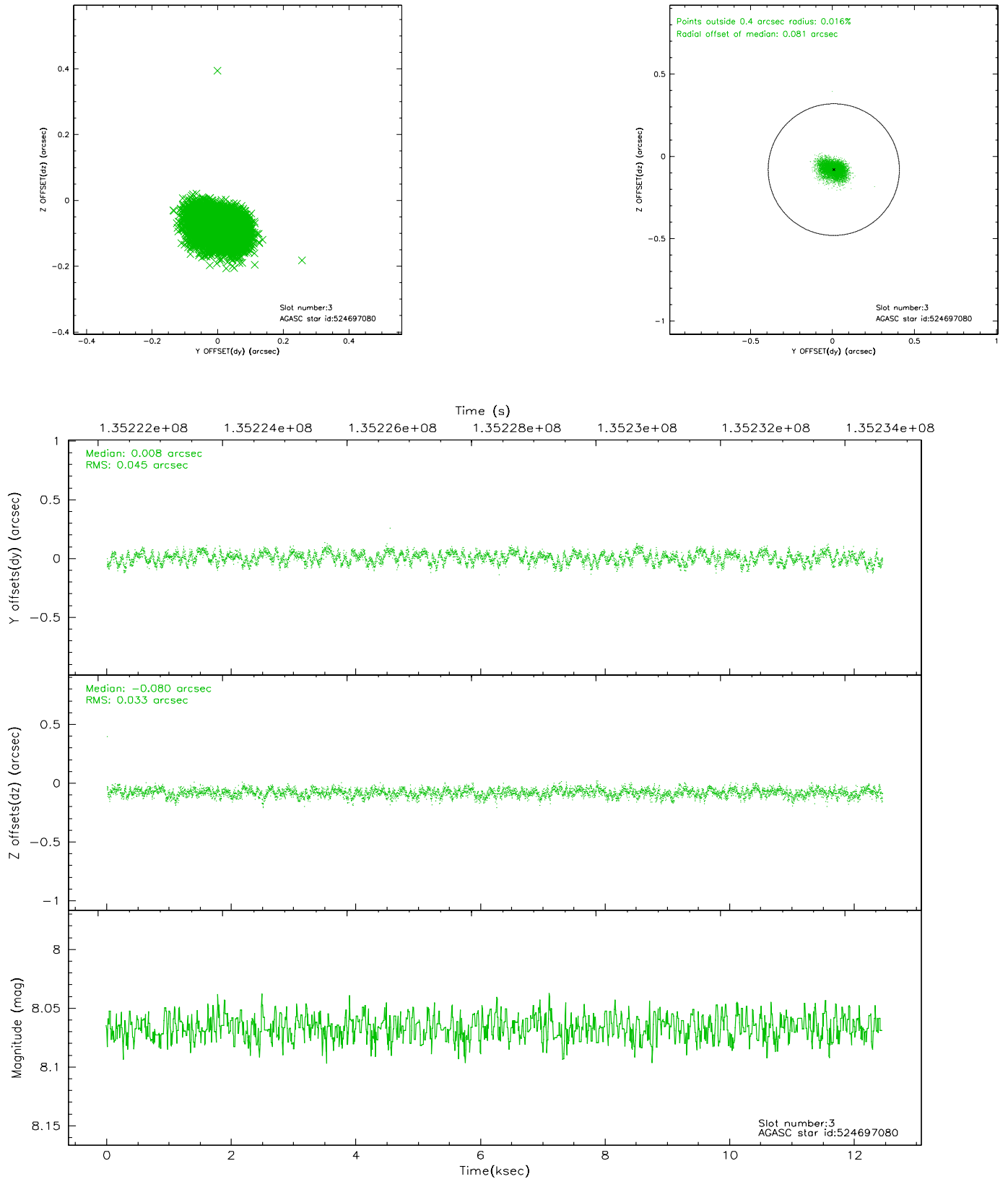


Slot Statistics

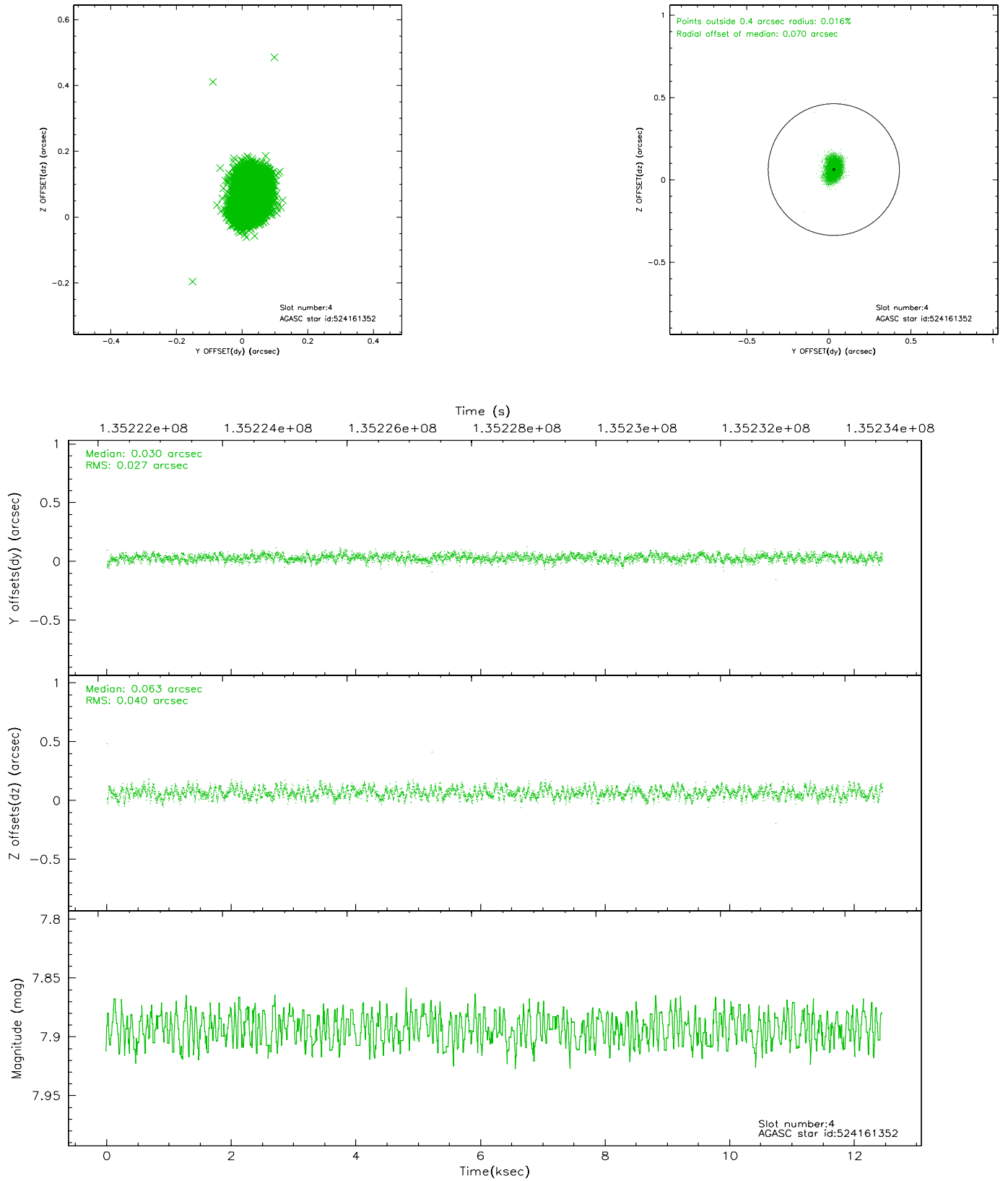
slot	status	id	mag	n_pts	med_dy	med_dz	dr1	dr2	ra	dec	mean_y	mean_z
0	FID	ACIS-S-3	7.36	3037	-0.073	-0.019	0.007	0.011	0.000000	0.000000	57.35	-1858.35
1	FID	ACIS-S-4	7.20	3037	-0.043	0.048	0.005	0.009	0.000000	0.000000	2157.60	178.76
2	FID	ACIS-S-5	7.24	3037	0.088	-0.019	0.006	0.010	0.000000	0.000000	-1807.97	172.96
3	GUIDE	524697080	8.07	6073	0.008	-0.080	0.060	0.095	351.714424	54.973814	-1149.27	1564.98
4	GUIDE	524161352	7.89	6070	0.030	0.063	0.051	0.084	352.951417	54.177997	-1485.71	-2276.10
5	GUIDE	524697864	8.19	6074	-0.012	-0.020	0.055	0.087	352.501566	55.266391	724.32	1091.09
6	GUIDE	524159672	9.10	6070	0.002	0.070	0.087	0.137	352.949522	54.208836	-1407.62	-2196.86
7	GUIDE	524699952	9.08	6071	-0.026	-0.032	0.083	0.132	352.075073	55.341435	326.66	1914.97

2.4 Star Slots

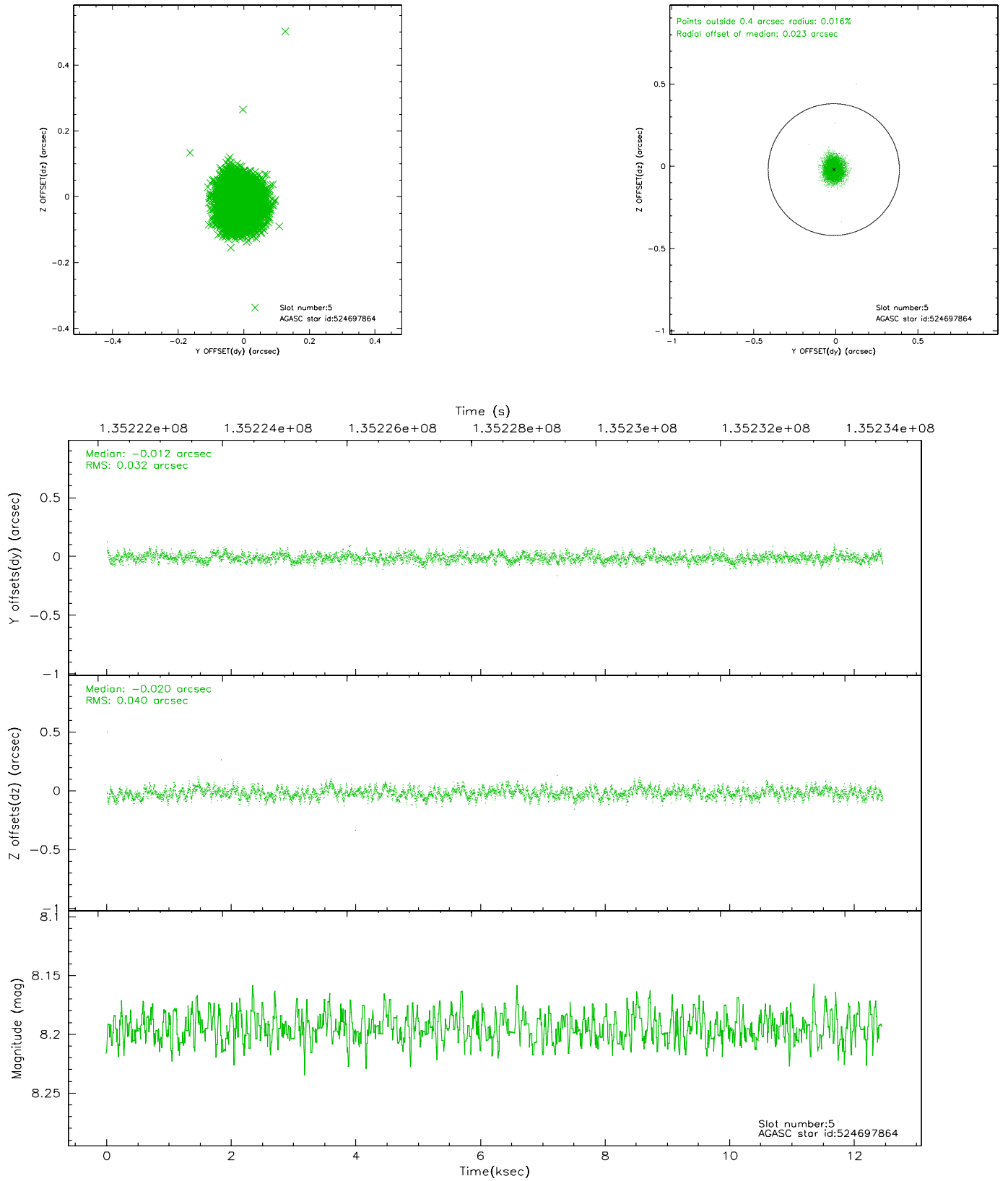
2.4.1 Slot 3



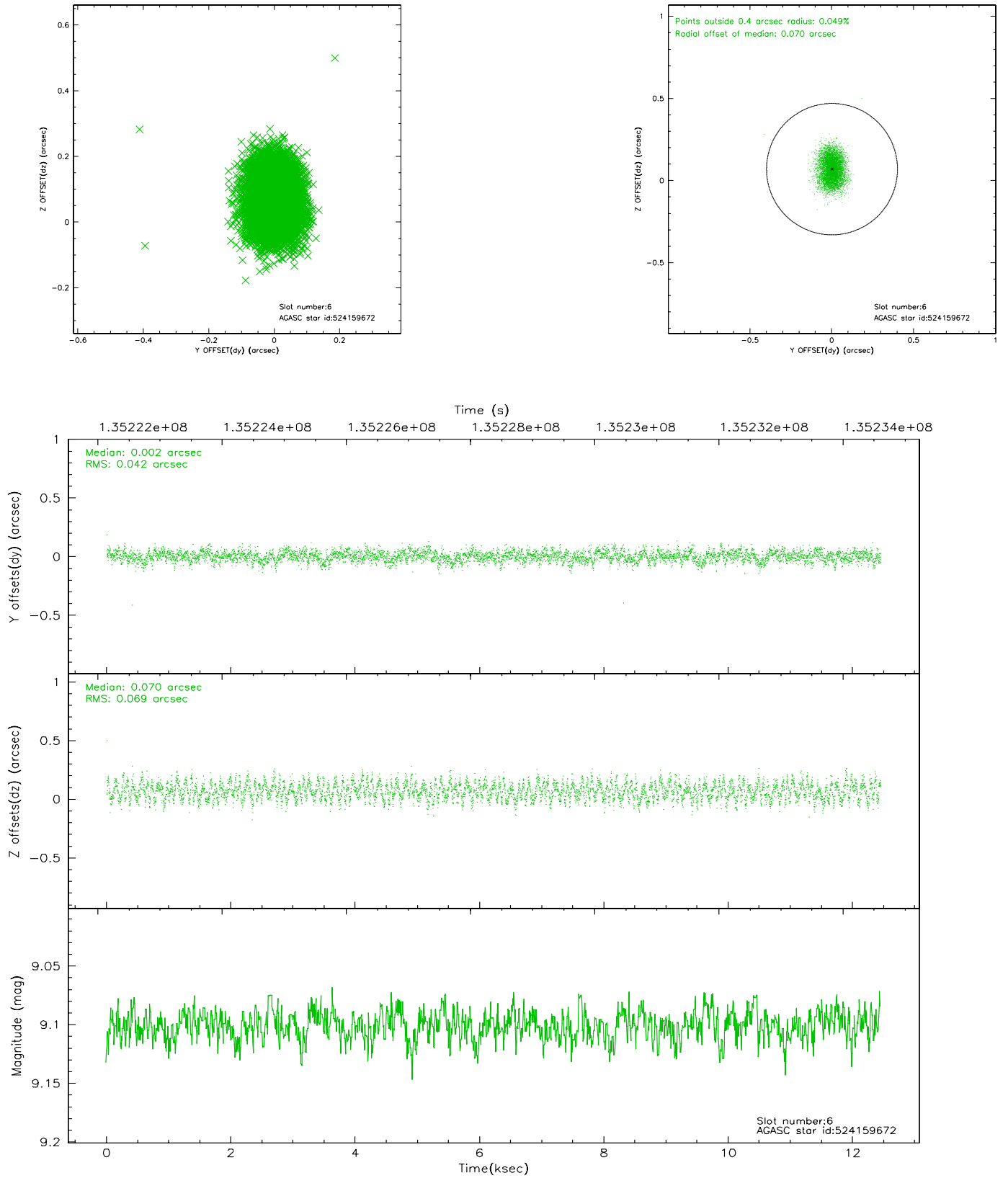
2.4.2 Slot 4



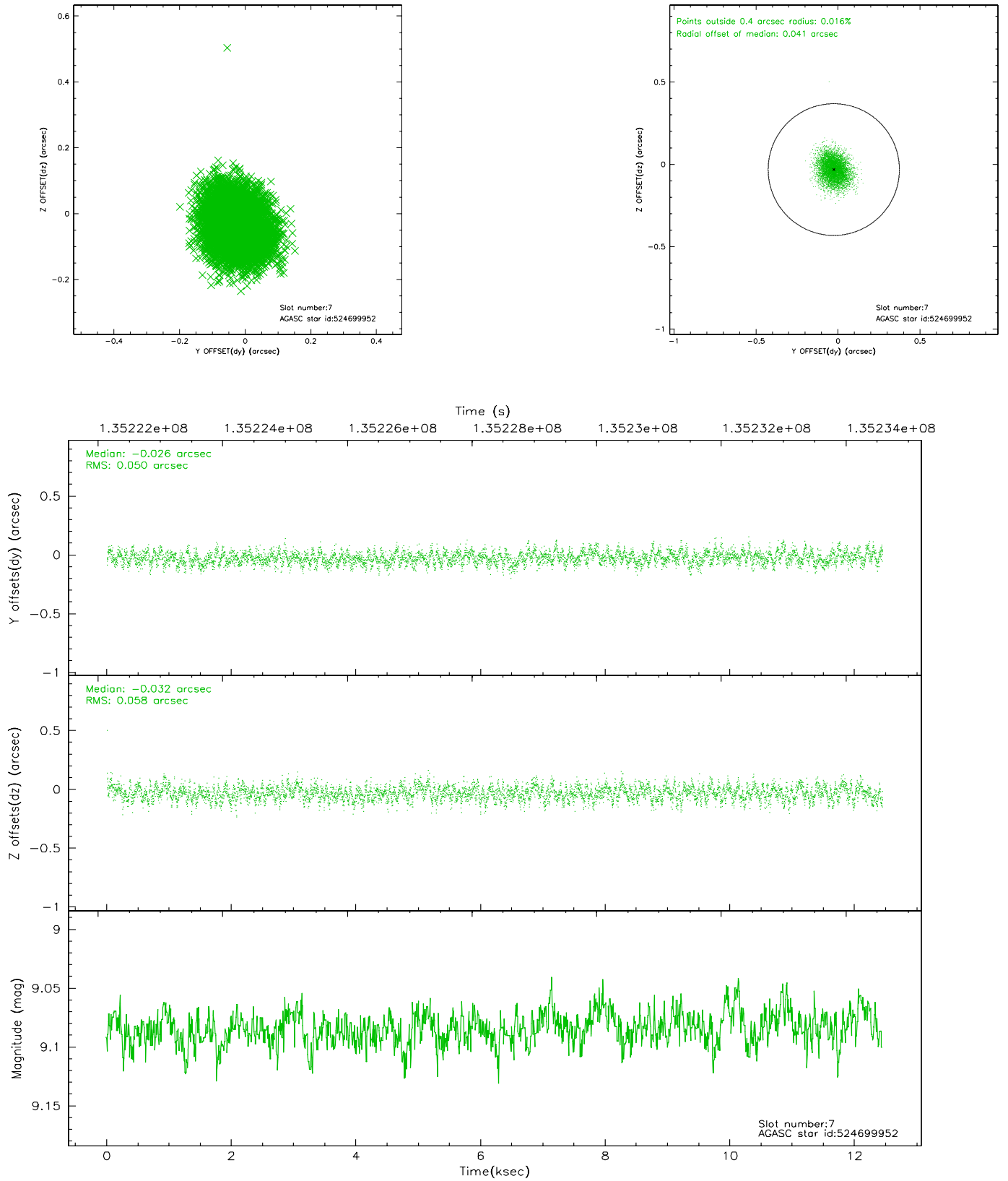
2.4.3 Slot 5



2.4.4 Slot 6

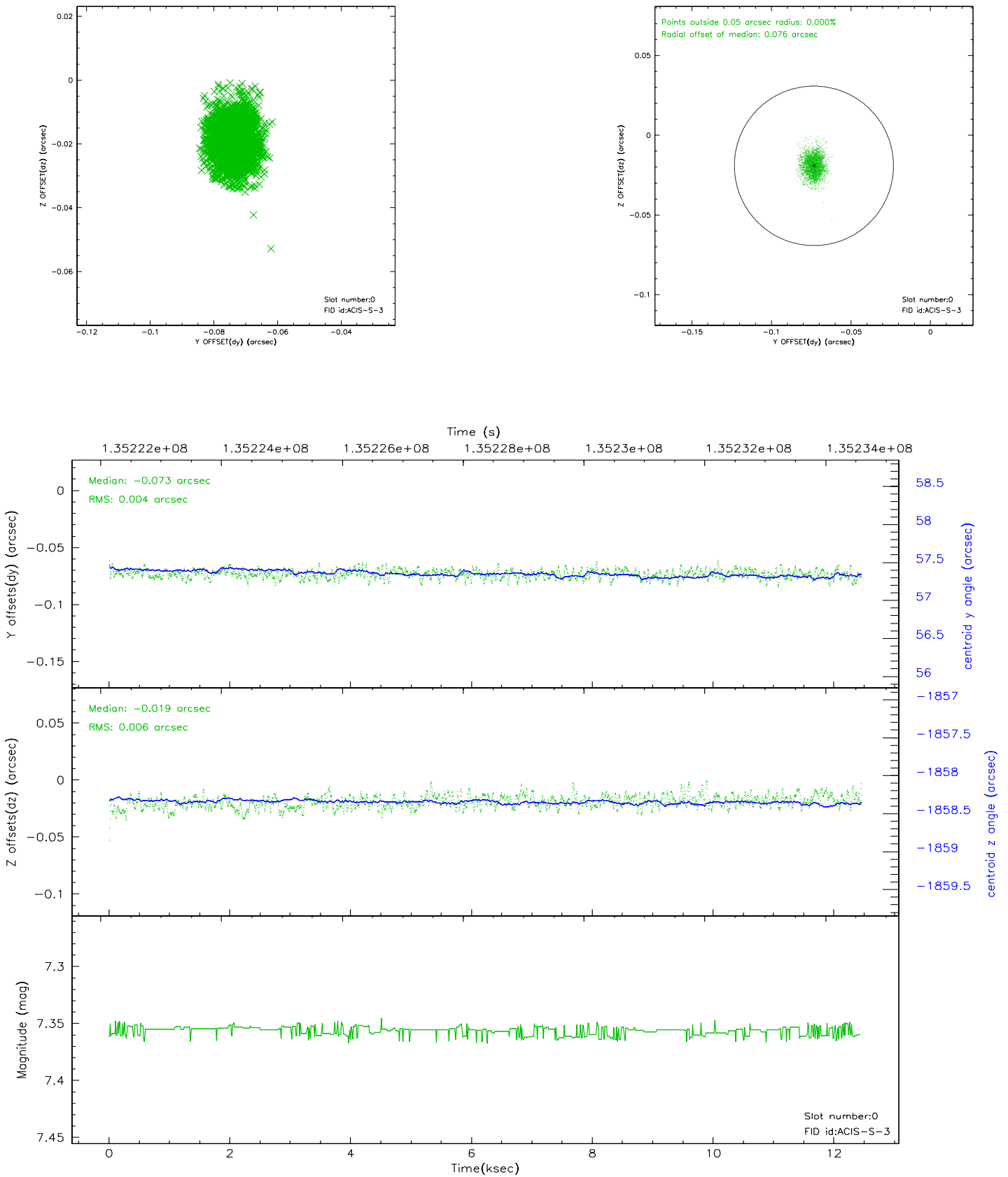


2.4.5 Slot 7

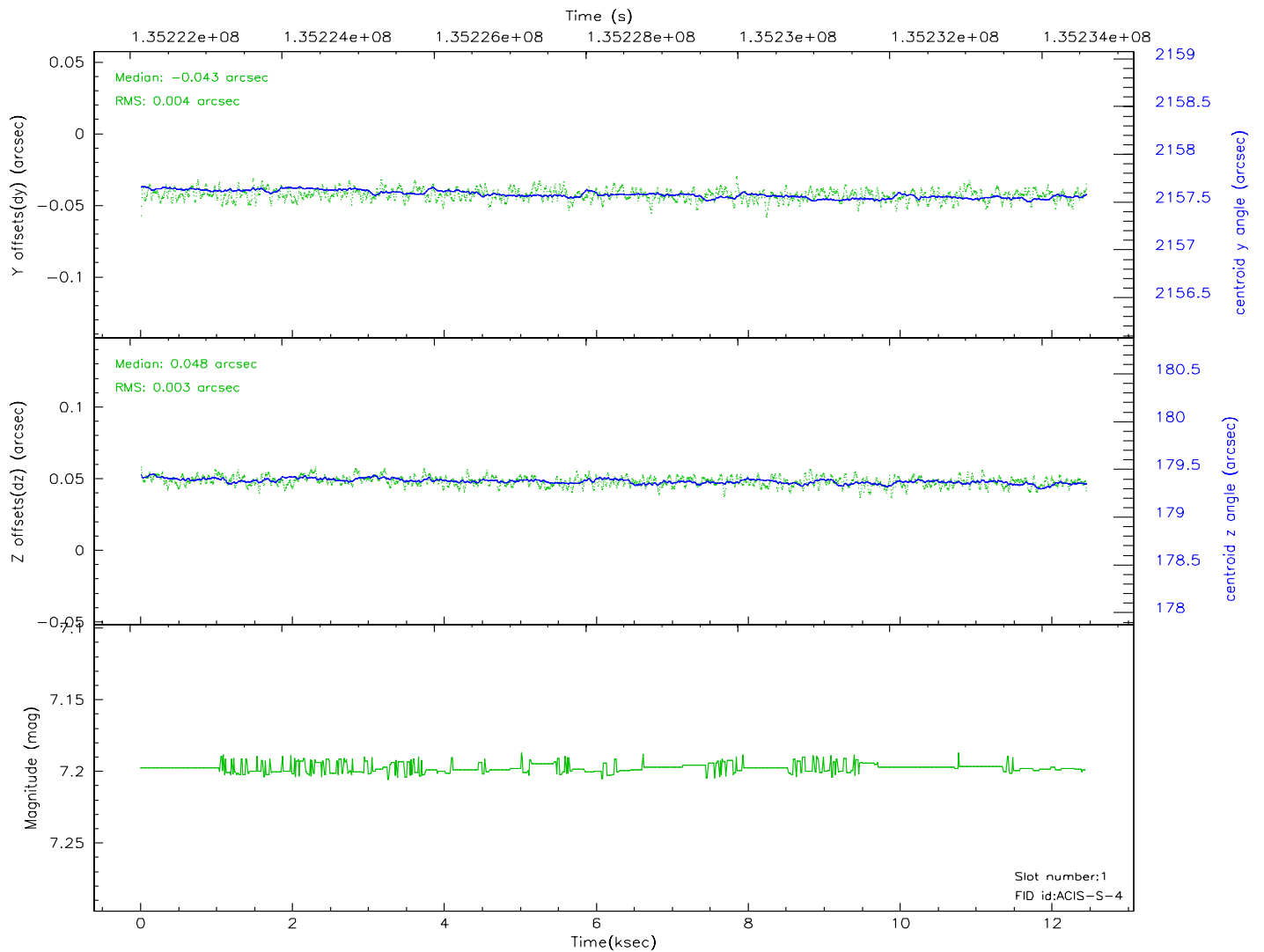
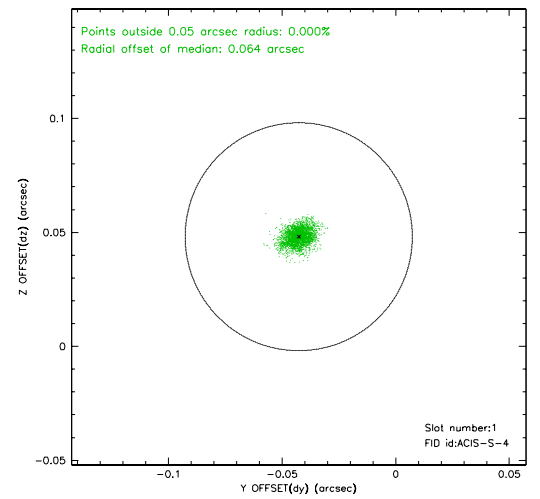
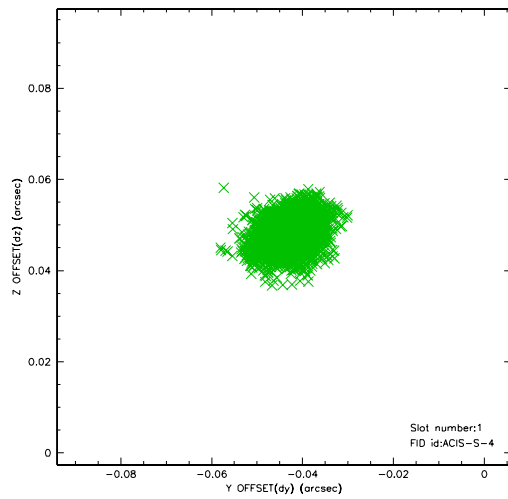


2.5 FID Slots

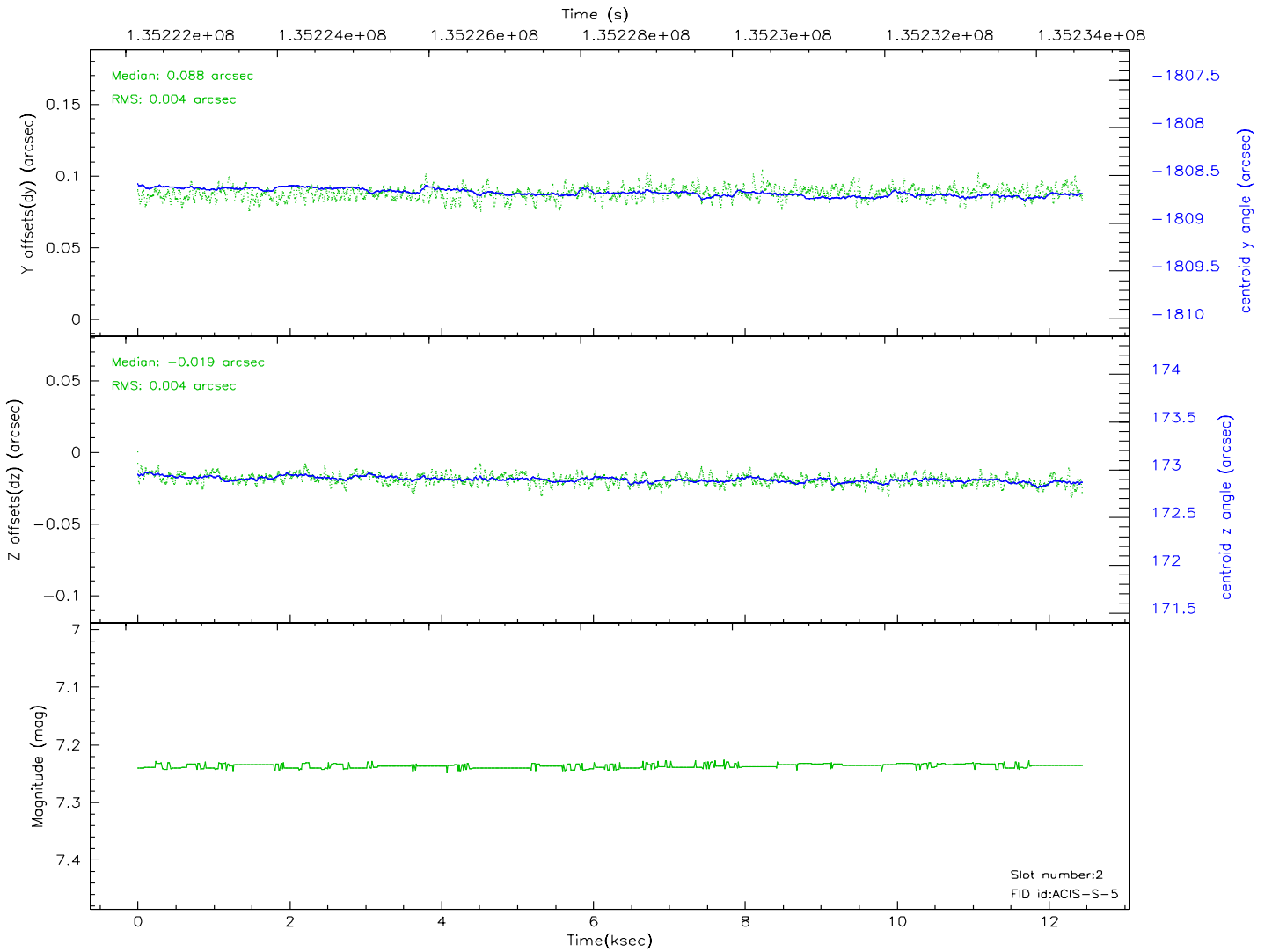
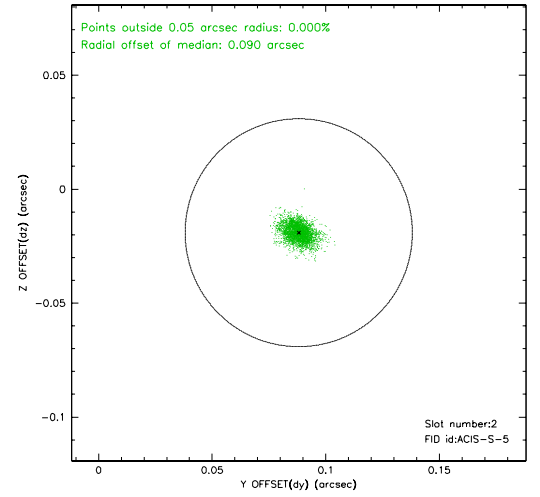
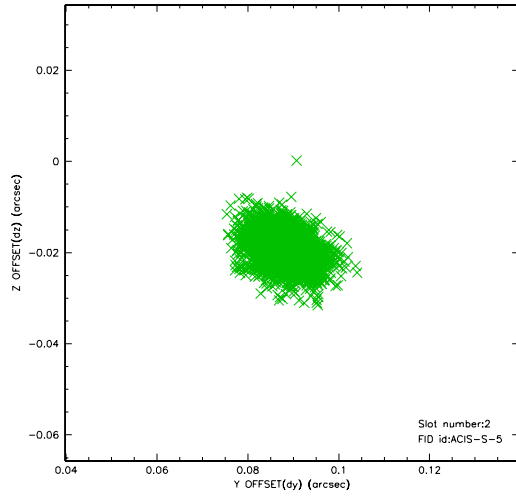
2.5.1 Slot 0



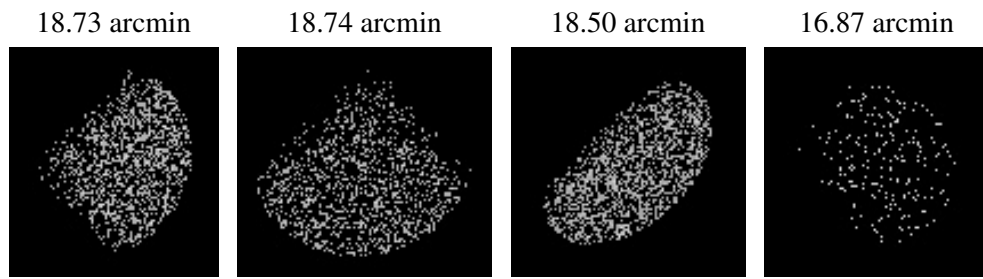
2.5.2 Slot 1



2.5.3 Slot 2



3 Point Sources



A Summary

A.1 Status

V&V Scientist	Jen Lauer
V&V Date (YYYY-MM-DD)	2006.09.11
V&V Edition	1
V&V Disposition and Status	OK
V&V Charge Time	11.718

A.2 Comments

Window constraint met.