

V&V Reference Report

L2 ASCDS Version : 8.4.5

Observation 3247 - L2 Version 3
Chandra X-Ray Center

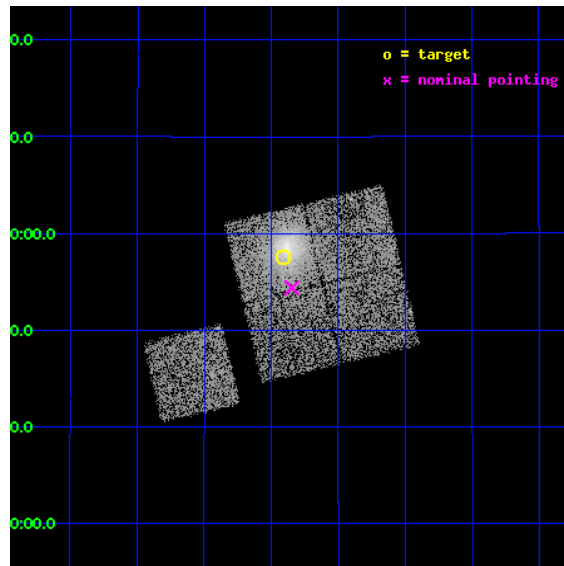
L2 Processing Date : Oct 15 2012

Contents

1	Front	2
2	OBI	3
2.1	OBI	3
2.1.1	Images	3
2.1.2	Bias	3
2.1.3	Parameters	4
2.1.4	Events	4
2.2	Compared Parameters	5
2.3	Aspect	6
2.4	Star Slots	9
2.4.1	Slot 3	9
2.4.2	Slot 4	10
2.4.3	Slot 5	11
2.4.4	Slot 6	12
2.4.5	Slot 7	13
2.5	FID Slots	14
2.5.1	Slot 0	14
2.5.2	Slot 1	15
2.5.3	Slot 2	16
A	Summary	17
A.1	Status	17
A.2	Comments	17

1 Front

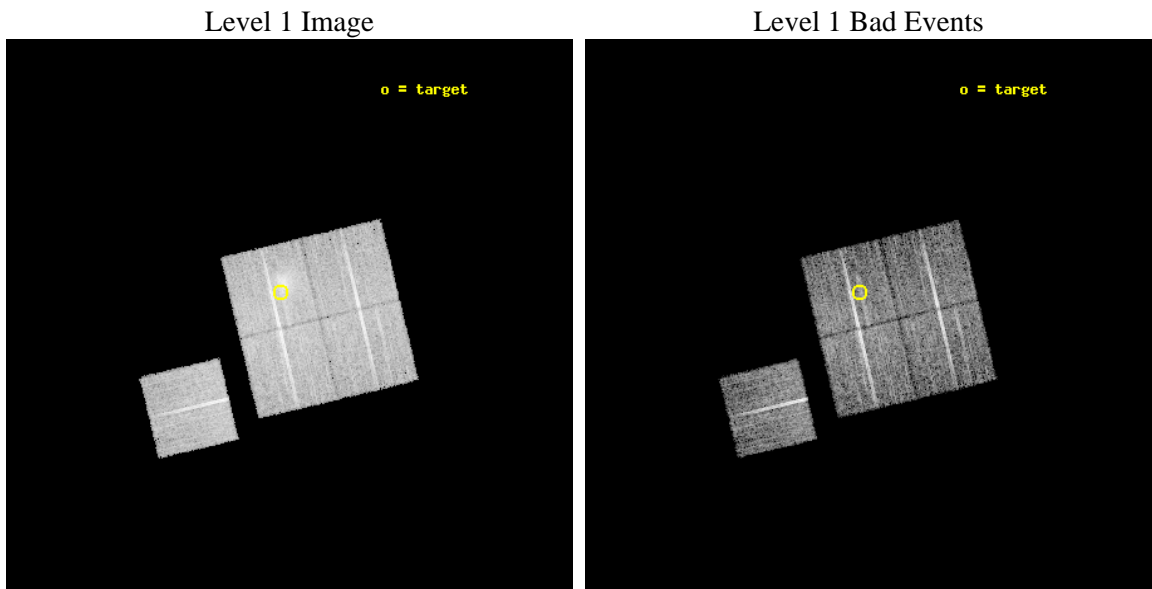
seq_num	800247	Sequence number
obs_id	3247	Observation id
title	OBSERVATION OF BCS CLUSTERS, SECOND SET	Proposal title
observer	DR. LEON VANSPEYBROECK	Principal investigator
object	A2409	Source name
dtcycle	0	
cycle	P	events from which exps? Prim/Second/Both
ra_targ	330.227083	Observer's specified target RA [deg]
dec_targ	20.958889	Observer's specified target Dec [deg]
ra_nom	330.211494867	Nominal RA [deg]
dec_nom	20.906509989359	Nominal Dec [deg]
roll_nom	256.60332967335	Nominal Roll [deg]
revision	3	Processing version of data
ontime	10378.799980015	Sum of GTIs [s]
livetime	10243.193317514	Livetime [s]
ontime0	10378.799980015	Sum of GTIs [s]
ontime1	10375.658999801	Sum of GTIs [s]
ontime2	10378.799980015	Sum of GTIs [s]
ontime3	10378.799980015	Sum of GTIs [s]
ontime6	10378.799980015	Sum of GTIs [s]
l2events	35798	Number of level 2 events



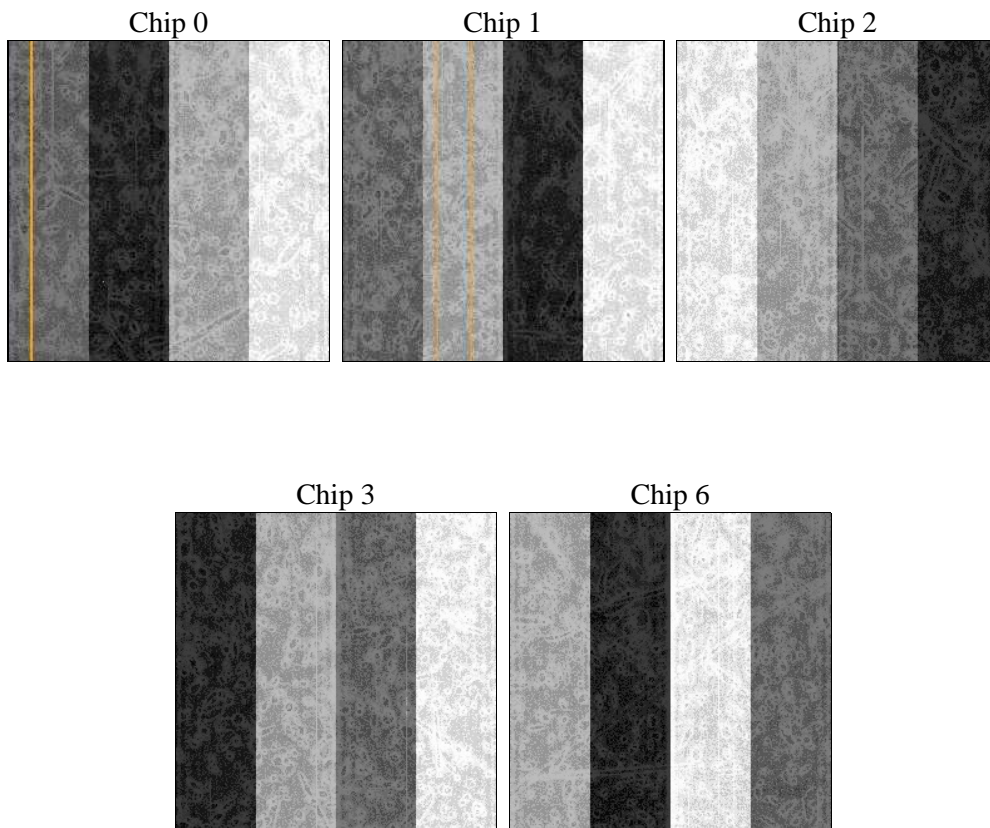
2 OBI

2.1 OBI

2.1.1 Images



2.1.2 Bias



2.1.3 Parameters

obi_num	2	Obi number	sched_exp_time	10200.000000	[s] Scheduled observation exposure time
ascdsver	8.4.5	Processing system revision	ontime	10378.799980015	Sum of GTIs [s]
caldsver	4.5.2	 	ontime0	10378.799980015	Sum of GTIs [s]
date	2012-10-15T12:47:02	Date and time of file creation	ontime1	10375.658999801	Sum of GTIs [s]
revision	3	Processing version of data	ontime2	10378.799980015	Sum of GTIs [s]
			ontime3	10378.799980015	Sum of GTIs [s]
			ontime6	10378.799980015	Sum of GTIs [s]
			l1events	297750	Number of level 1 events

2.1.4 Events

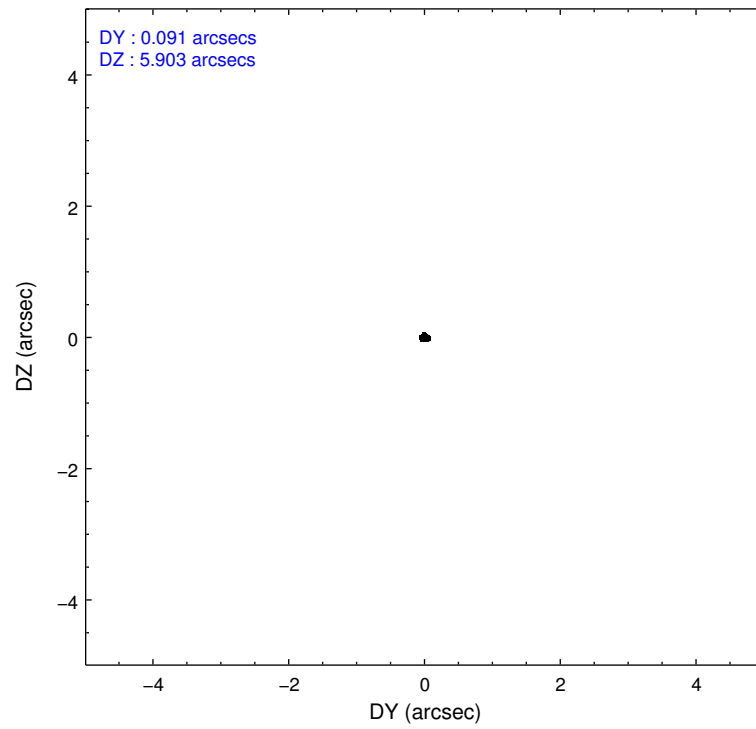
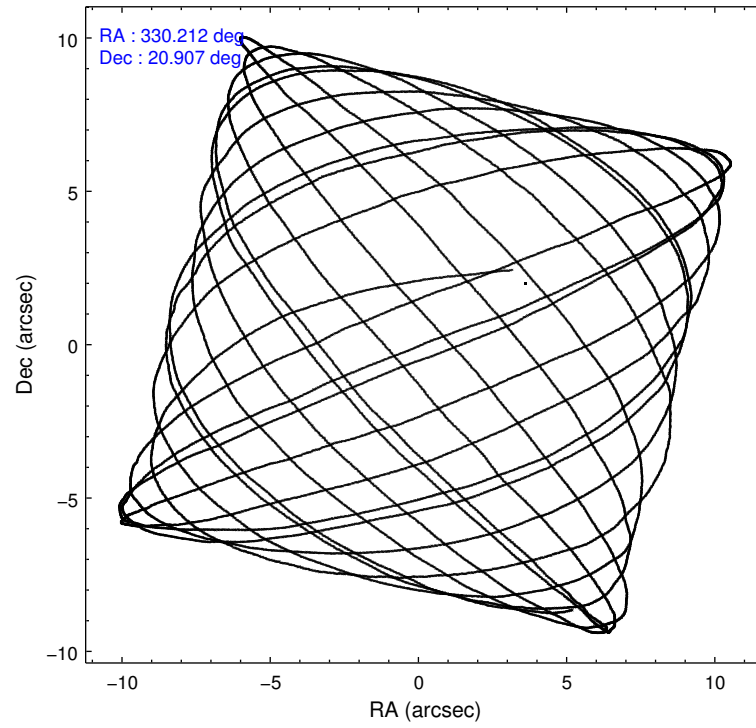
	ccd 0	ccd 1	ccd 2	ccd 3	ccd 6
level 1 events	54659	53475	61338	70500	57778
rejected events	48934	46630	55796	53226	52086
rejected %	89%	87%	90%	75%	90%

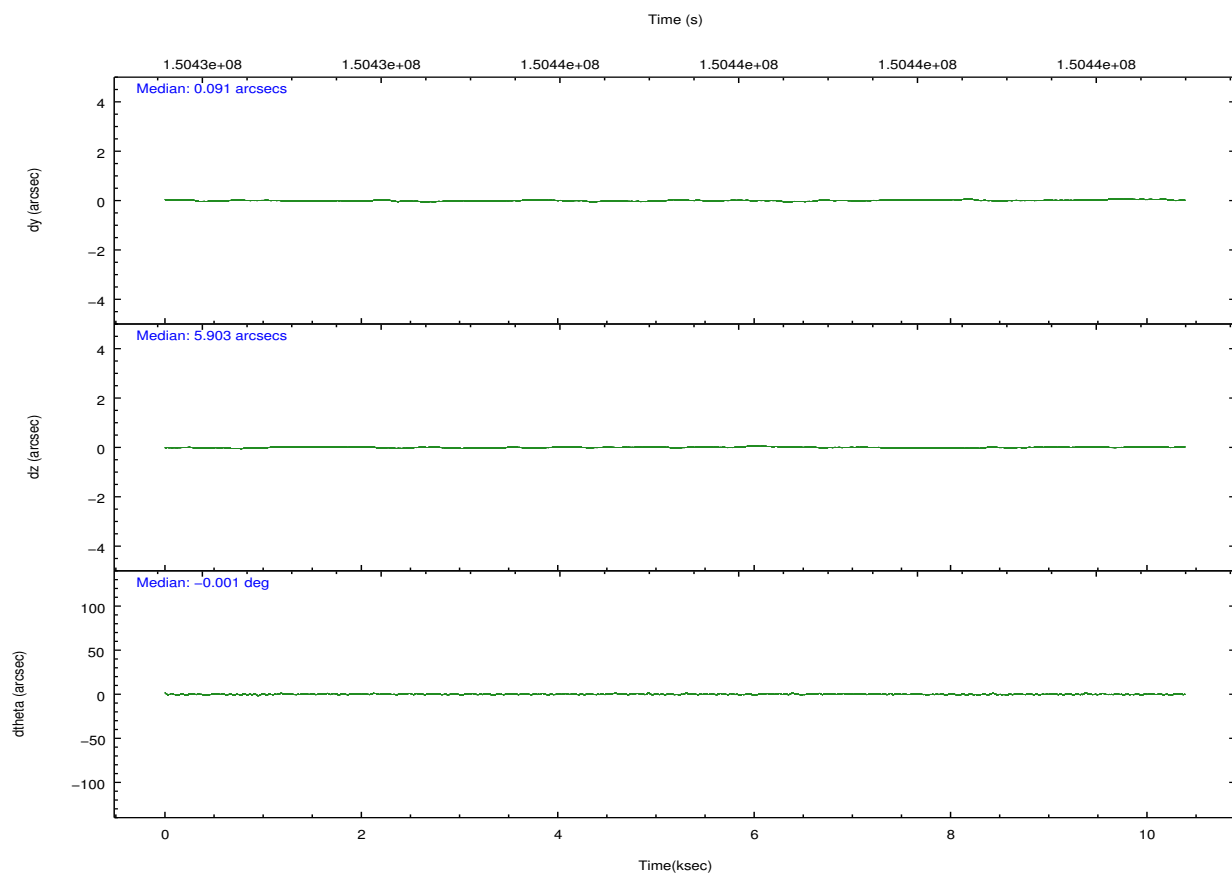
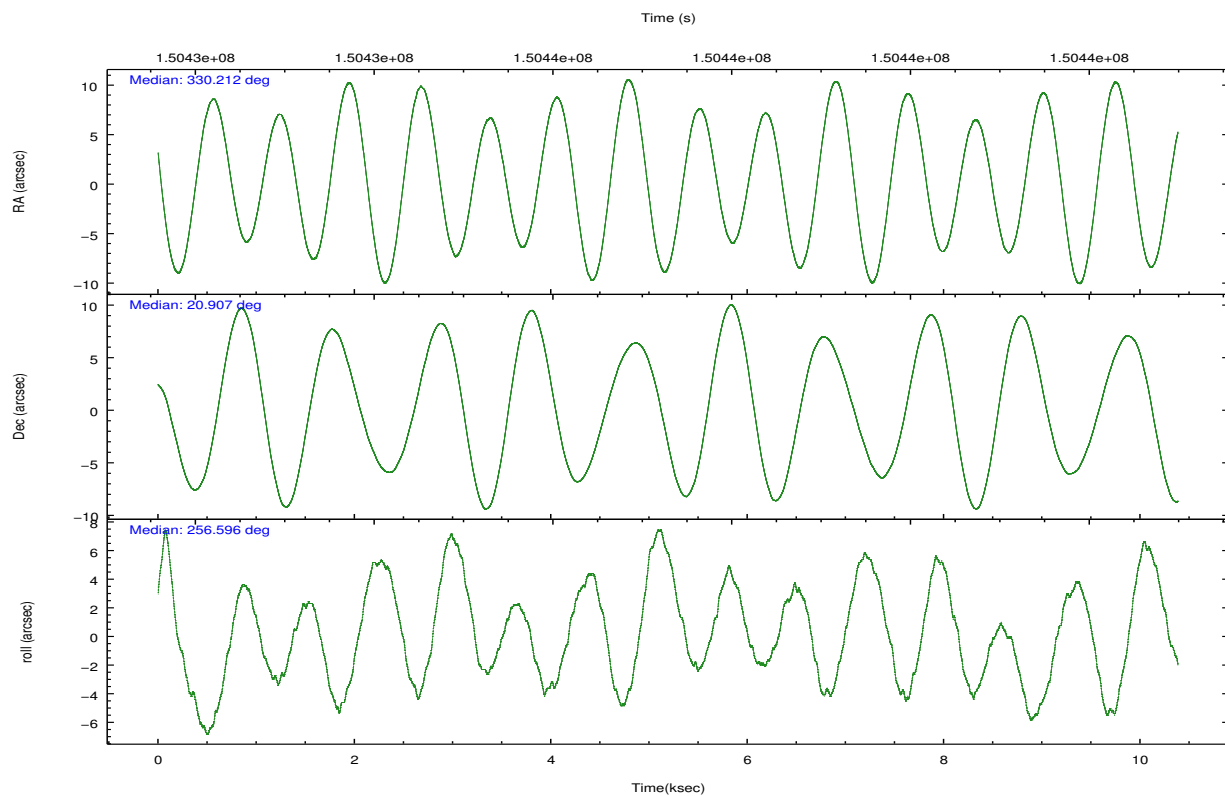
	ccd 0	ccd 1	ccd 2	ccd 3	ccd 6
grade 0 events	2126	2754	2064	11891	2015
	3%	5%	3%	16%	3%
grade 1 events	28	20	26	78	29
	0%	0%	0%	0%	0%
grade 2 events	1322	1400	1314	2260	1231
	2%	2%	2%	3%	2%
grade 3 events	702	817	599	1012	659
	1%	1%	0%	1%	1%
grade 4 events	620	727	663	970	660
	1%	1%	1%	1%	1%
grade 5 events	1958	2221	1870	2174	2133
	3%	4%	3%	3%	3%
grade 6 events	1044	1277	984	1371	1209
	1%	2%	1%	1%	2%
grade 7 events	46859	44259	53818	50744	49842
	85%	82%	87%	71%	86%

2.2 Compared Parameters

Parameter	Planned	Actual	Parameter	Planned	Actual
Instrument	ACIS	ACIS	Obspar format version number	7	7
Detector	ACIS-01236	ACIS-01236	Obspar file type	PREDICTED	ACTUAL
Grating	NONE	NONE	Obspar update status	NONE	UPDATED
Data mode	VFAINT	VFAINT	Number of optional ACIS chips dropped	0	0
Observation mode	POINTING	POINTING	On-chip summing requested	N	N
[deg] Pointing RA	330.203058	330.2114948669997	Subarray requested	NONE	NONE
[deg] Pointing Dec	20.932767	20.90650998935867	Alternating exposures requested	N	N
[deg] Pointing Roll	256.397647	256.6033296733534	[s] Primary exposure time	0.000000	3.1
[mm] SIM focus pos	-0.782348	-0.7809083437167272			
[mm] SIM defocus	0	0.001439871863259334			
[mm] SIM translation stage pos	-225.840463	-225.848371962627			
[mm] SIM translation stage offset	-7.752	-7.744081040302689			
[s] Observation start time (MET)	150432283.184000	150431216.42442			
Observation start date	2002-10-08T02:43:39	2002-10-08T02:26:56			
[s] Observation end time (MET)	150442483.184000	150443069.52491			
Observation end date	2002-10-08T05:33:39	2002-10-08T05:44:29			
Read mode	TIMED	TIMED			

2.3 Aspect



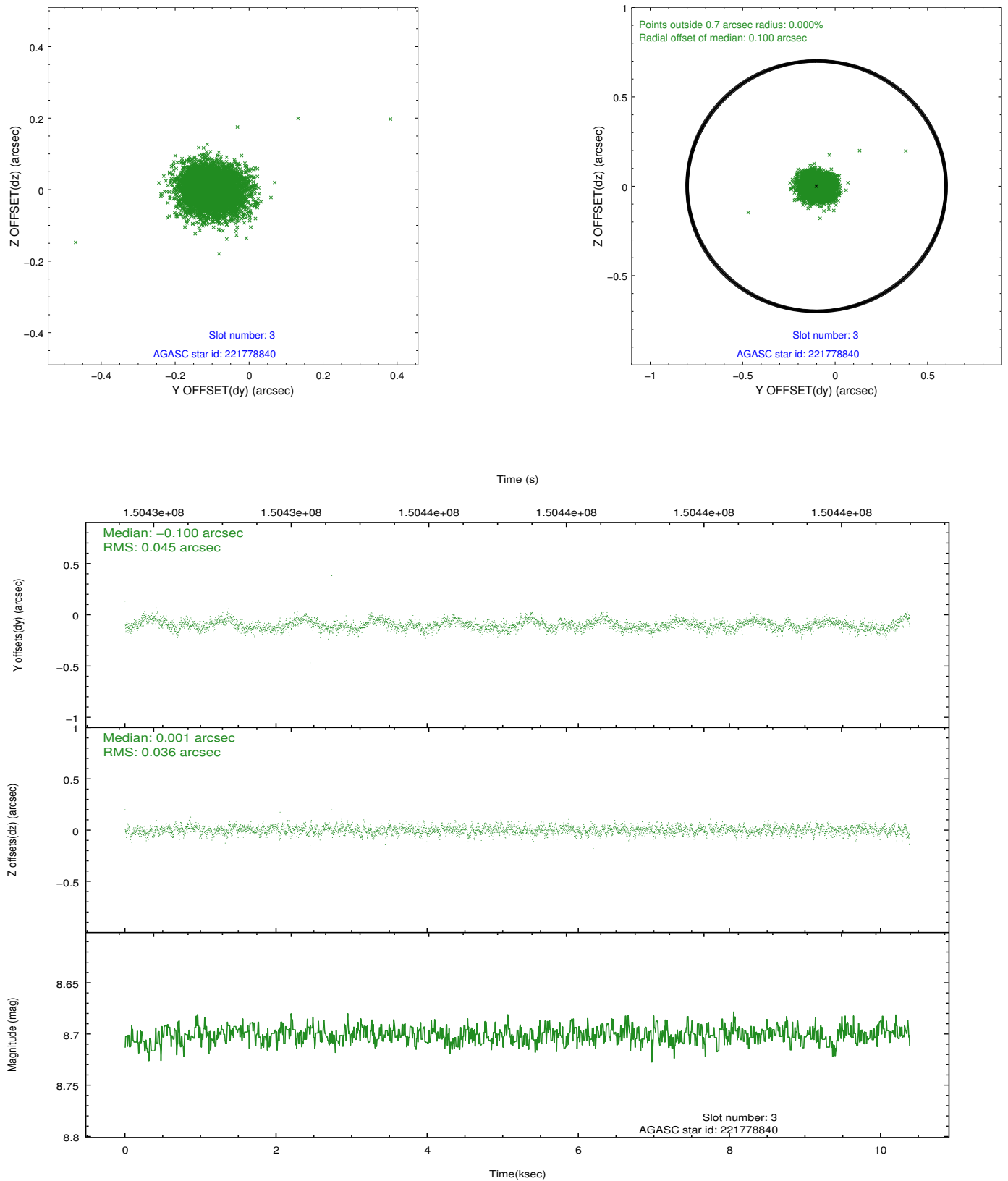


Slot Statistics

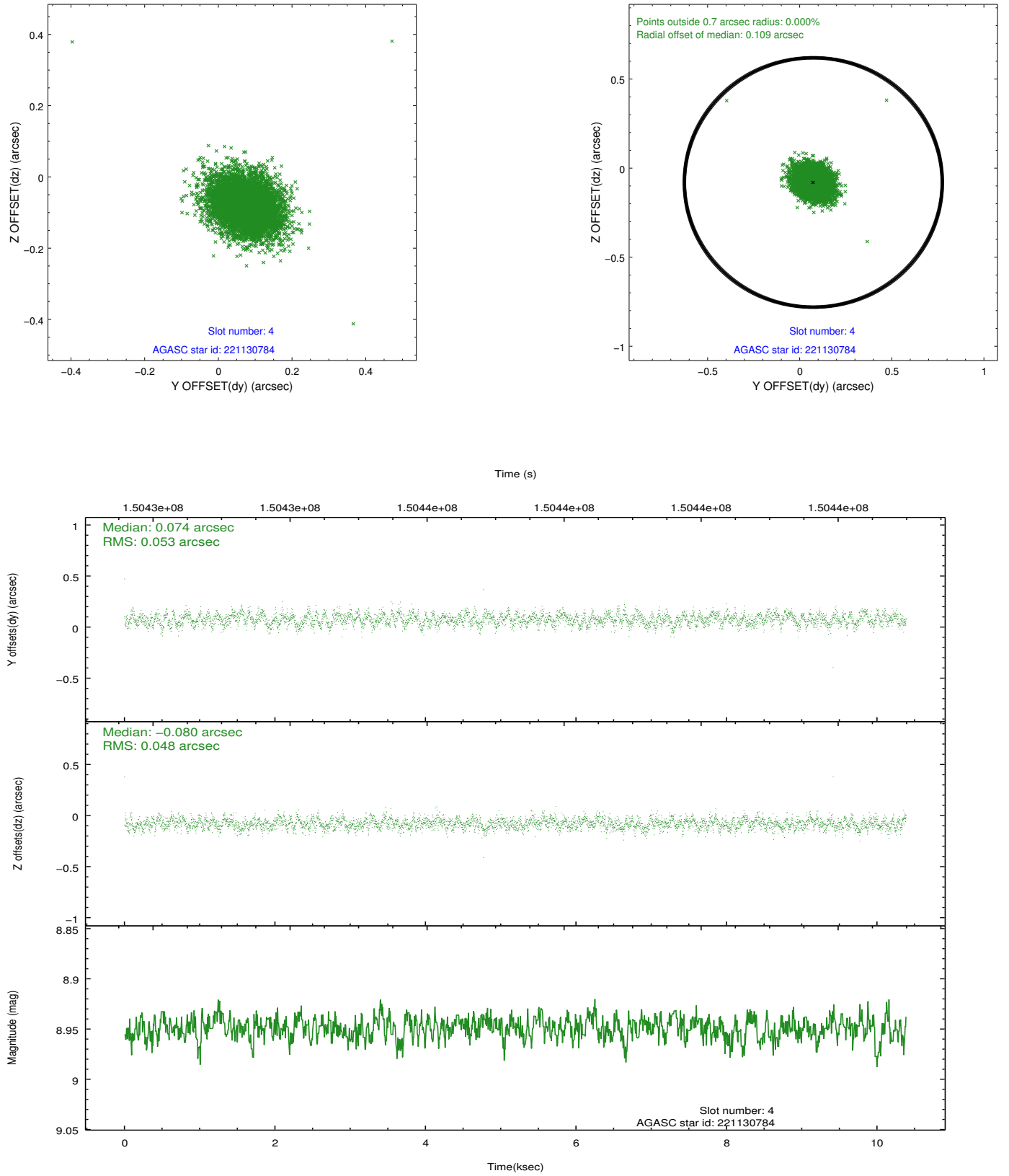
slot	status	id	mag	n_pts	med_dy	med_dz	dr1	dr2	ra	dec	mean_y	mean_z
0	FID	ACIS-I-1	7.22	2532	0.084	-0.046	0.007	0.012	0.000000	0.000000	939.70	-988.30
1	FID	ACIS-I-5	7.23	2532	-0.214	0.086	0.007	0.012	0.000000	0.000000	-1808.39	909.05
2	FID	ACIS-I-6	7.26	2533	0.039	0.030	0.007	0.012	0.000000	0.000000	404.70	1554.04
3	GUIDE	221778840	8.70	5066	-0.100	0.001	0.061	0.099	330.146195	21.409956	-1624.42	-589.58
4	GUIDE	221130784	8.95	5063	0.074	-0.080	0.074	0.119	329.463663	20.512293	2052.62	-2068.61
5	GUIDE	221249800	9.08	5066	0.042	0.056	0.076	0.122	330.575920	20.463921	1344.17	1618.65
6	GUIDE	221252784	9.06	5062	0.005	0.052	0.071	0.114	330.625852	20.537459	1046.91	1720.11
7	GUIDE	221648560	9.30	5064	-0.023	-0.025	0.090	0.141	329.998765	21.543803	-1976.71	-1182.45

2.4 Star Slots

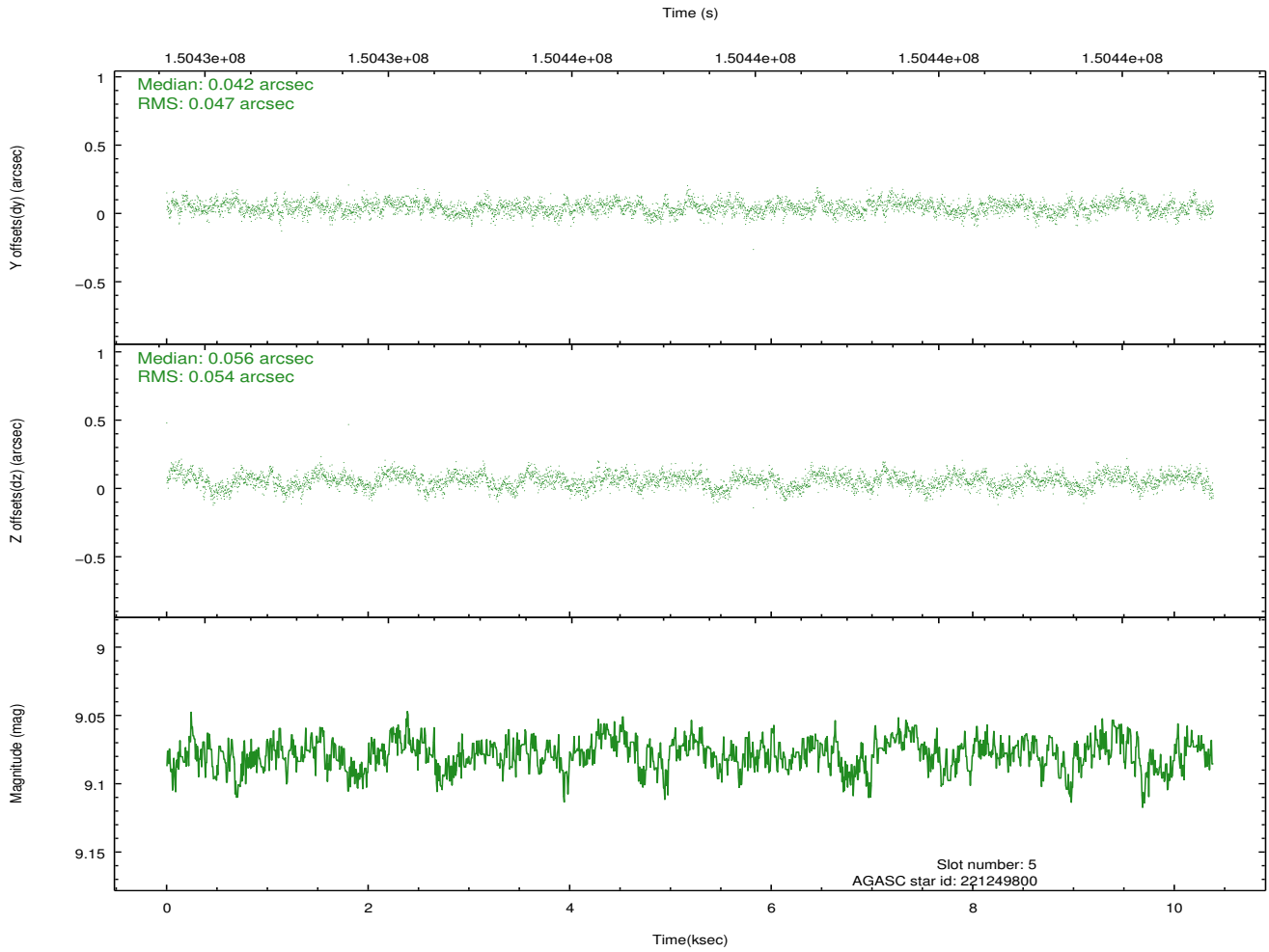
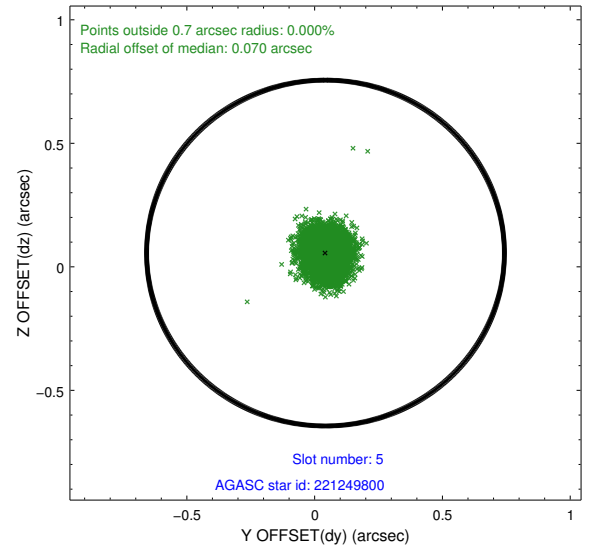
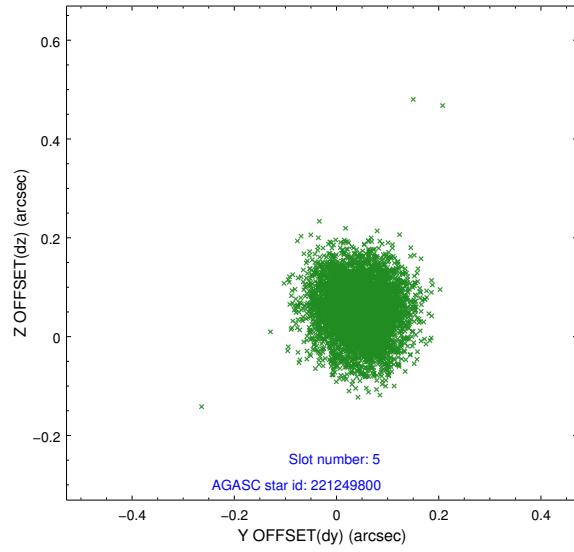
2.4.1 Slot 3



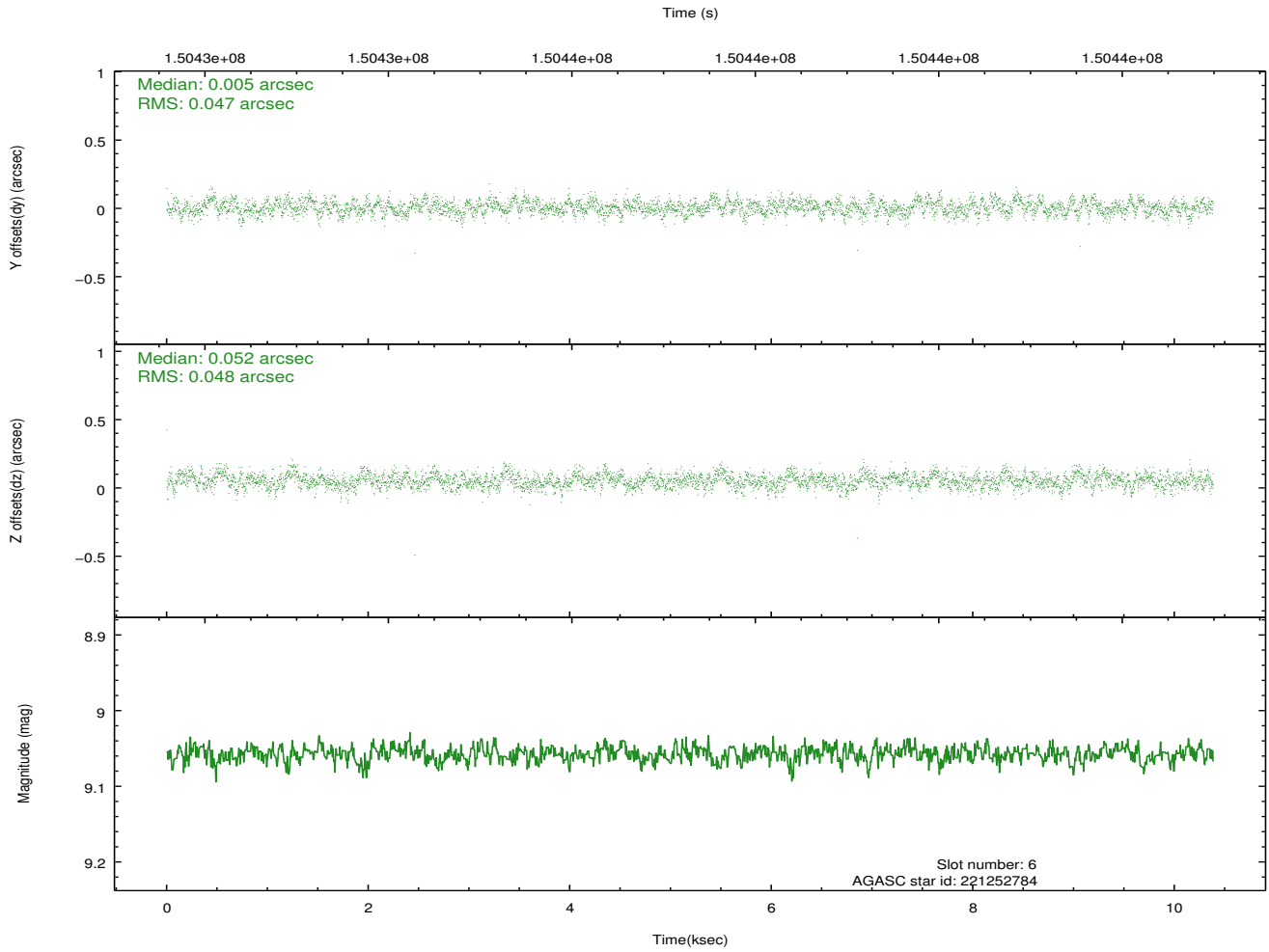
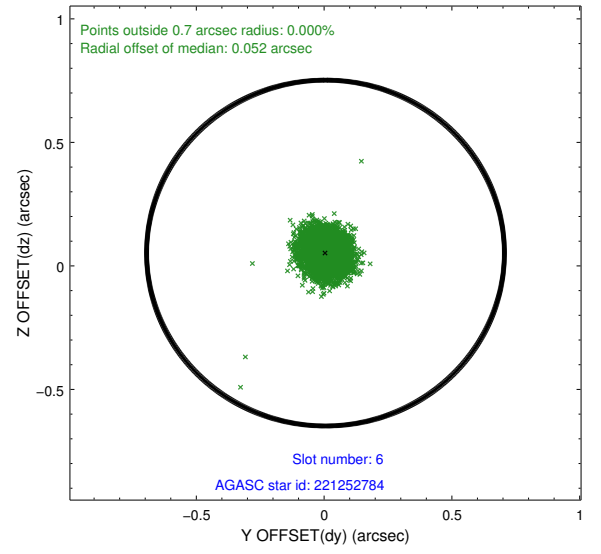
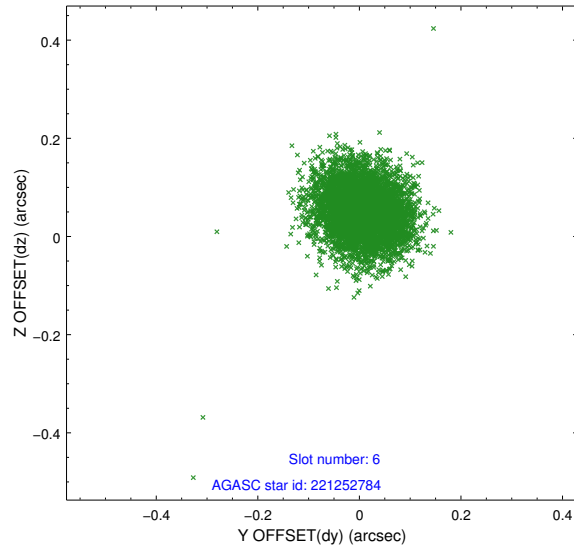
2.4.2 Slot 4



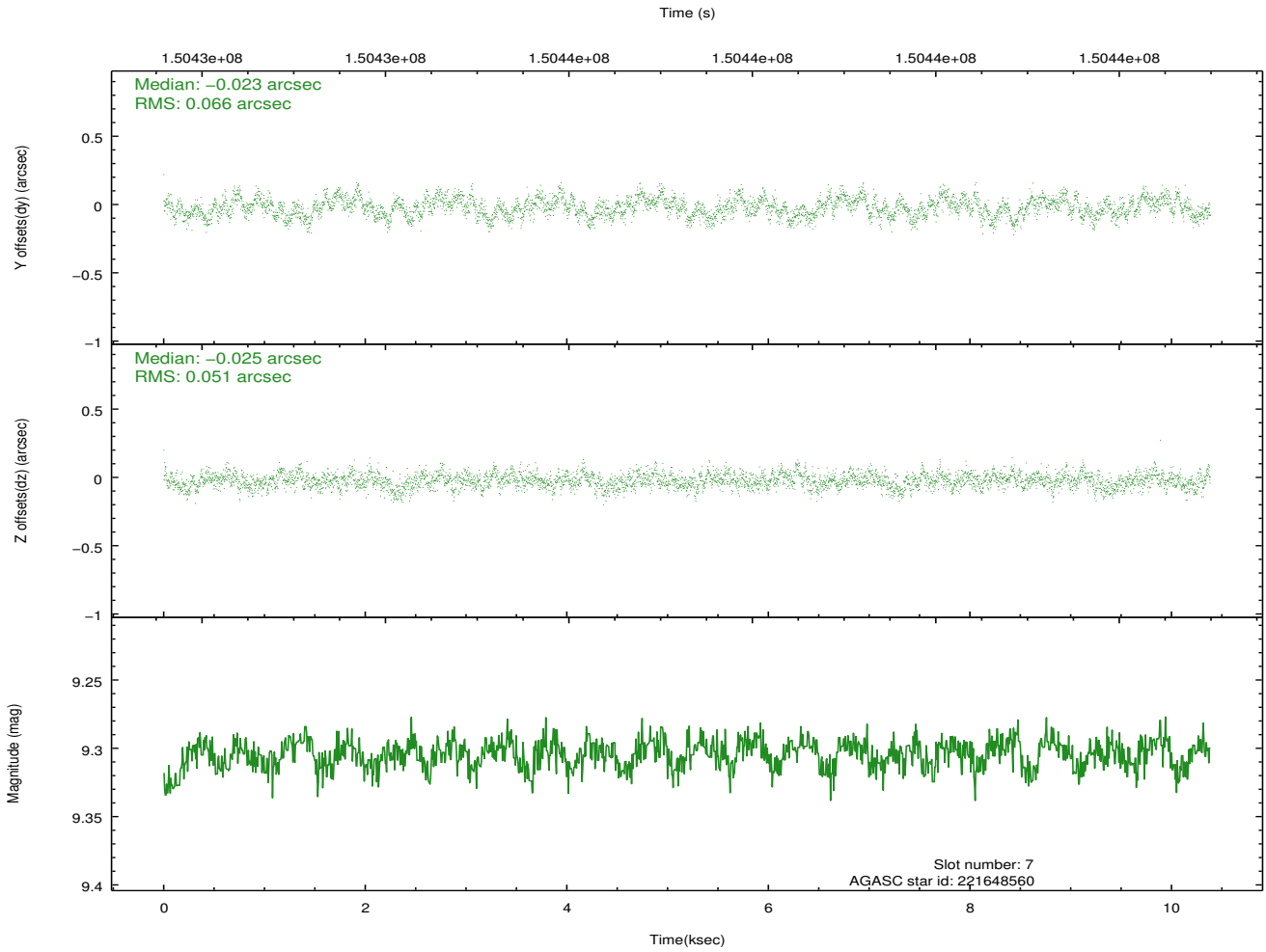
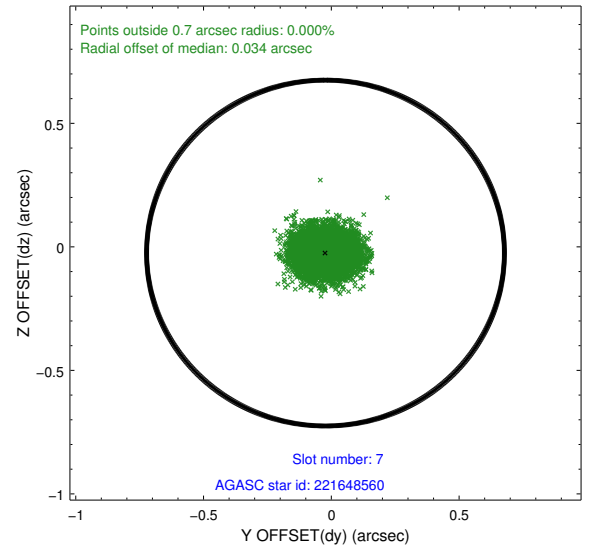
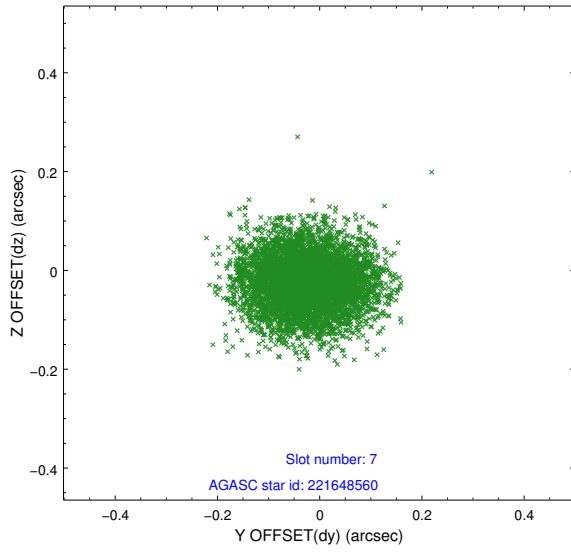
2.4.3 Slot 5



2.4.4 Slot 6

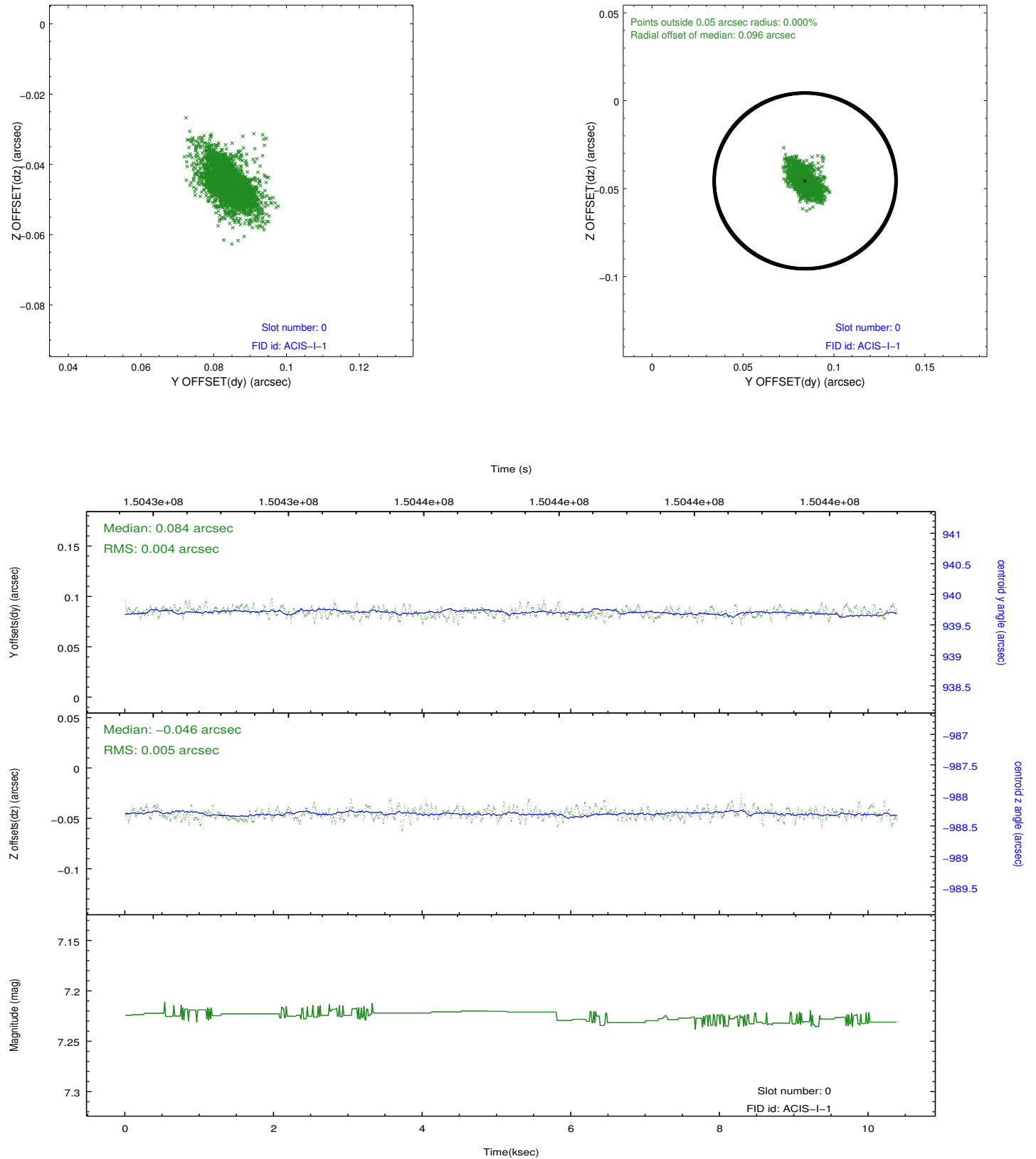


2.4.5 Slot 7

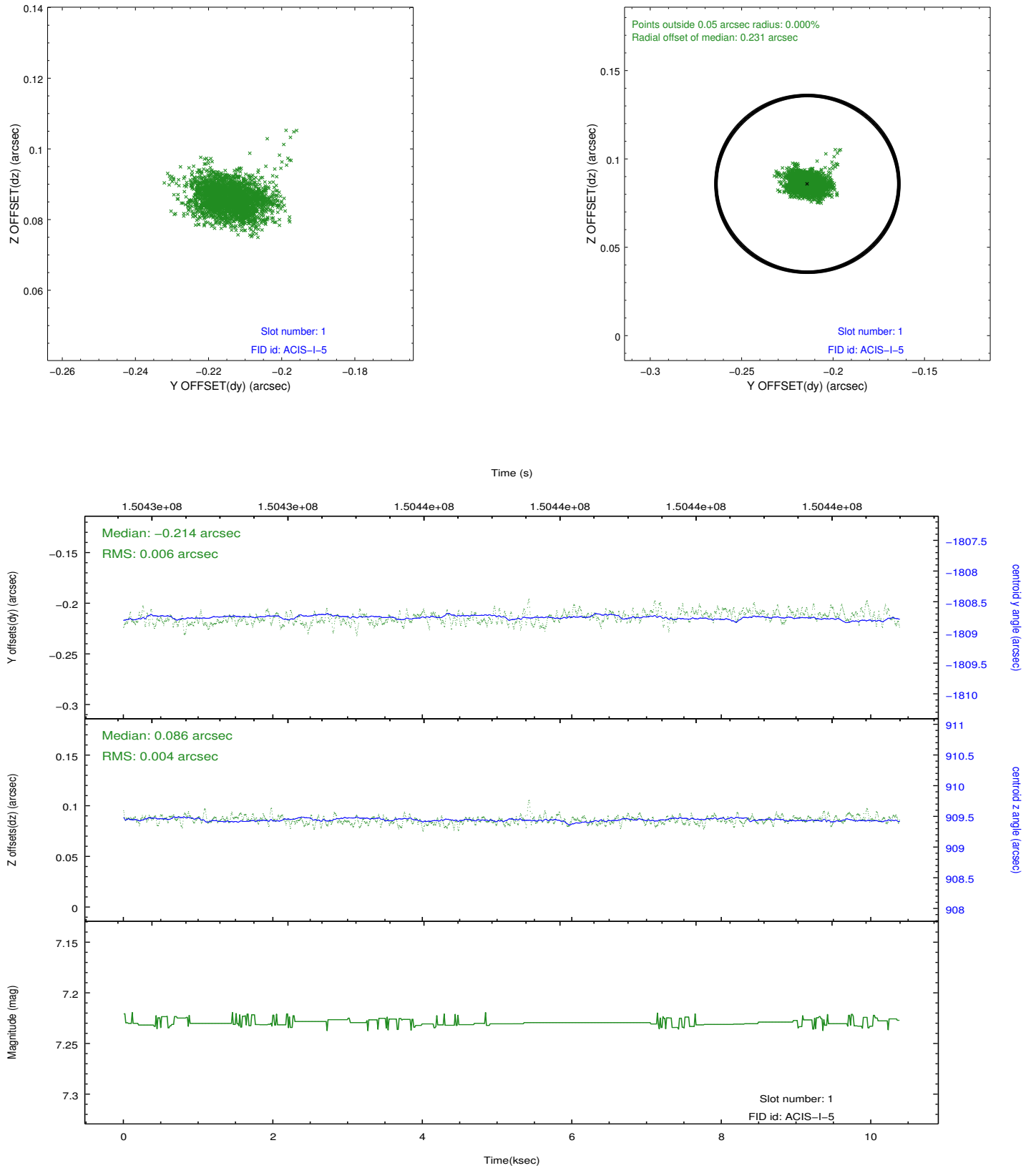


2.5 FID Slots

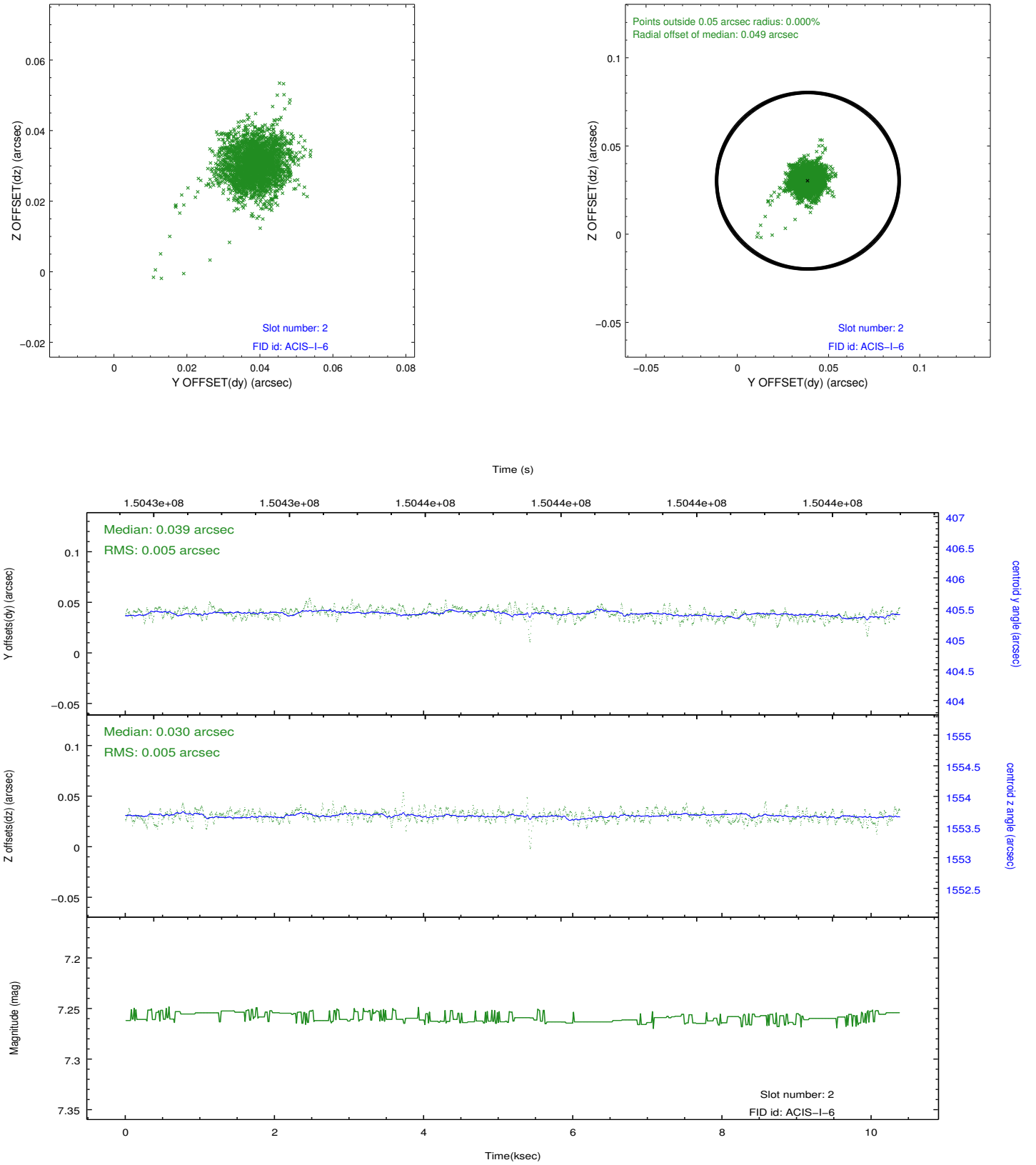
2.5.1 Slot 0



2.5.2 Slot 1



2.5.3 Slot 2



A Summary

A.1 Status

V&V Scientist	Beth Sundheim
V&V Date (YYYY-MM-DD)	2012.10.24
V&V Edition	1
V&V Disposition and Status	OK
V&V Charge Time	10.378

A.2 Comments