

# V&V Reference Report

## L2 ASCDS Version : 7.6.9

Observation 3247 - L2 Version 001  
Chandra X-Ray Center

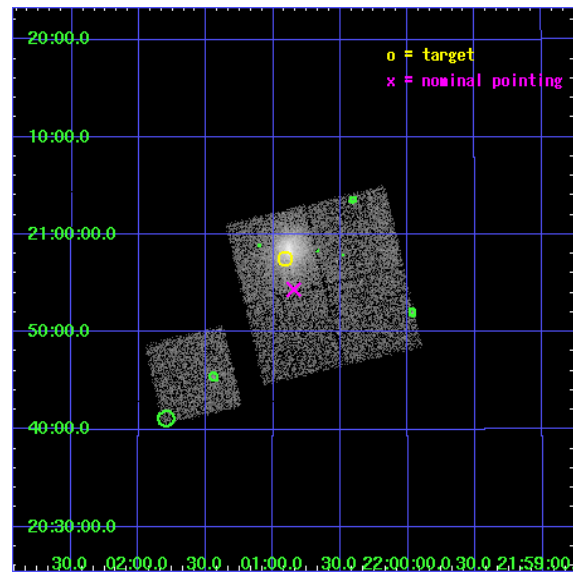
L2 Processing Date : Oct 5 2006

## Contents

<b>1</b>	<b>Front</b>	<b>2</b>
<b>2</b>	<b>OBI</b>	<b>3</b>
2.1	OBI . . . . .	3
2.1.1	Images . . . . .	3
2.1.2	Bias . . . . .	3
2.1.3	Parameters . . . . .	4
2.1.4	Events . . . . .	4
2.2	Compared Parameters . . . . .	5
2.3	Aspect . . . . .	6
2.4	Star Slots . . . . .	9
2.4.1	Slot 3 . . . . .	9
2.4.2	Slot 4 . . . . .	10
2.4.3	Slot 5 . . . . .	11
2.4.4	Slot 6 . . . . .	12
2.4.5	Slot 7 . . . . .	13
2.5	FID Slots . . . . .	14
2.5.1	Slot 0 . . . . .	14
2.5.2	Slot 1 . . . . .	15
2.5.3	Slot 2 . . . . .	16
<b>3</b>	<b>Point Sources</b>	<b>17</b>
<b>A</b>	<b>Summary</b>	<b>18</b>
A.1	Status . . . . .	18
A.2	Comments . . . . .	18

# 1 Front

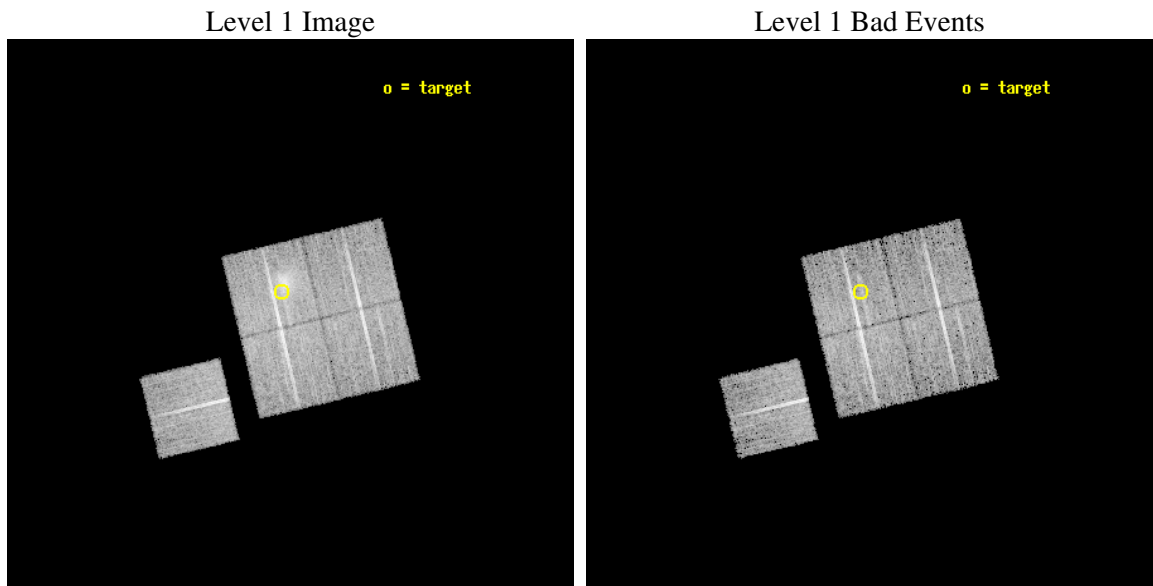
seq_num	800247
obs_id	3247
title	OBSERVATION OF BCS CLUSTERS, SECOND SET
observer	DR. LEON VANSPEYBROECK
object	A2409
dtcycle	0
cycle	P
ra_targ	330.227083
dec_targ	20.958889
ra_nom	330.21149486677
dec_nom	20.906510001034
roll_nom	256.60332967269
revision	2
ontime	10378.799980044
livetime	10243.193317544
ontime0	10378.799980044
ontime1	10375.65899983
ontime2	10378.799980044
ontime3	10378.799980044
ontime6	10378.799980044
l2events	35897



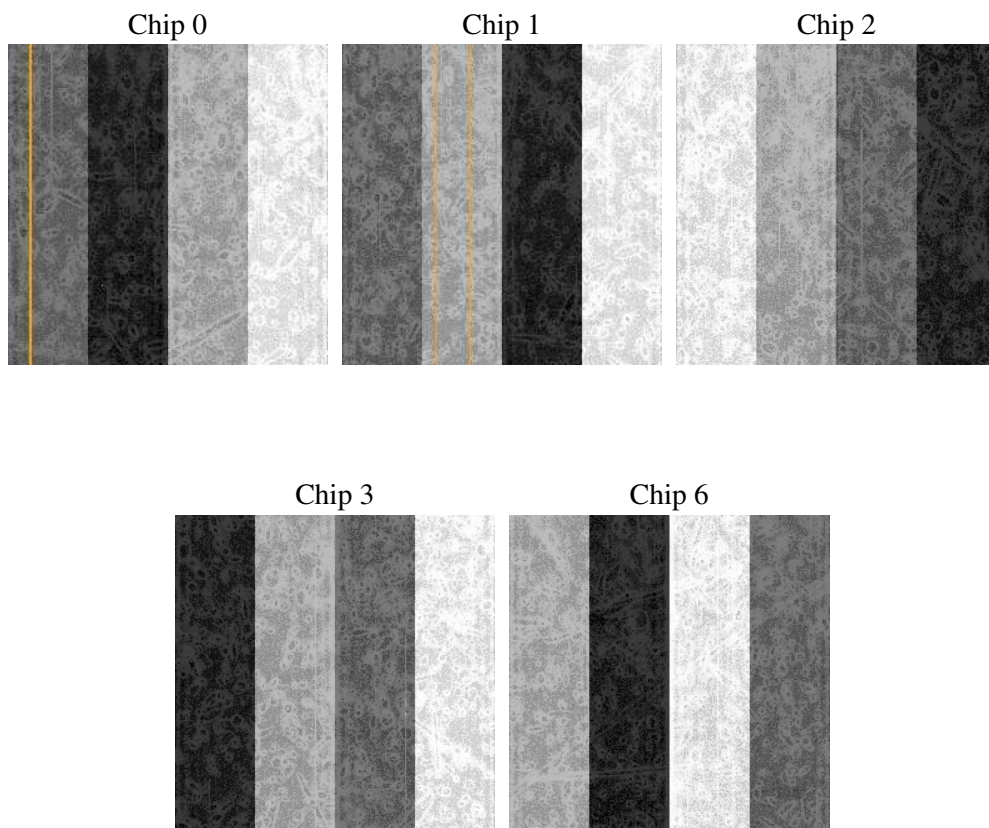
## 2 OBI

### 2.1 OBI

#### 2.1.1 Images



#### 2.1.2 Bias



### 2.1.3 Parameters

obi_num	2
ascdsver	7.6.9
caldbver	3.2.3
date	2006-10-05T22:25:35
revision	2

sched_exp_time	10200.000000
ontime	10534.940916657
ontime0	10534.940916657
ontime1	10531.799936444
ontime2	10534.940916657
ontime3	10534.940916657
ontime6	10534.940916657
l1events	297750

### 2.1.4 Events

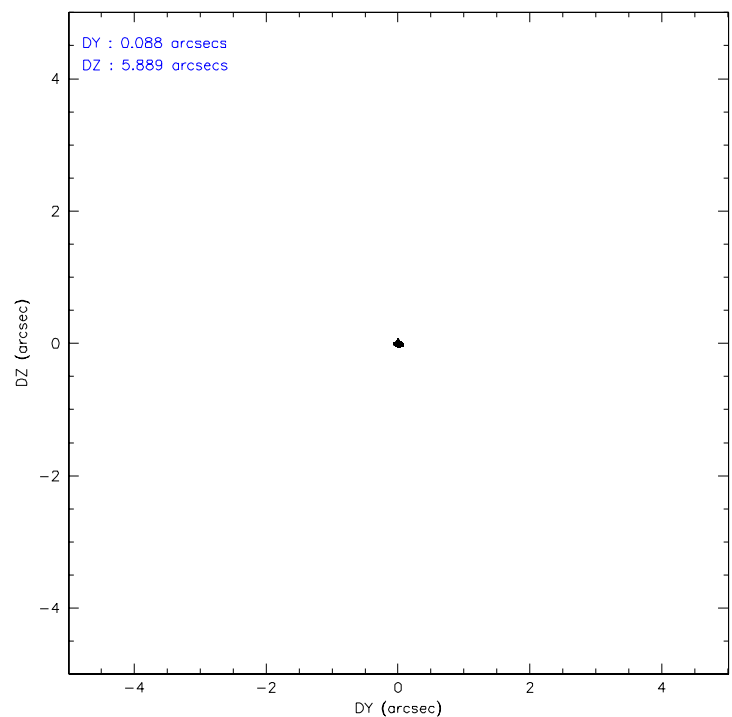
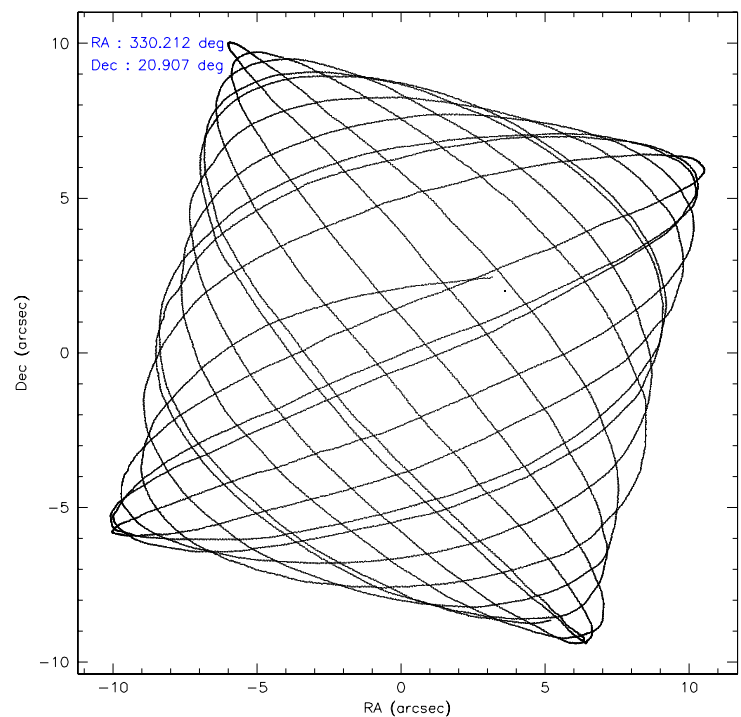
	ccd 0	ccd 1	ccd 2	ccd 3	ccd 6
level 1 events	54659	53475	61338	70500	57778
rejected events	48933	46622	55792	53220	52084
rejected %	89%	87%	90%	75%	90%

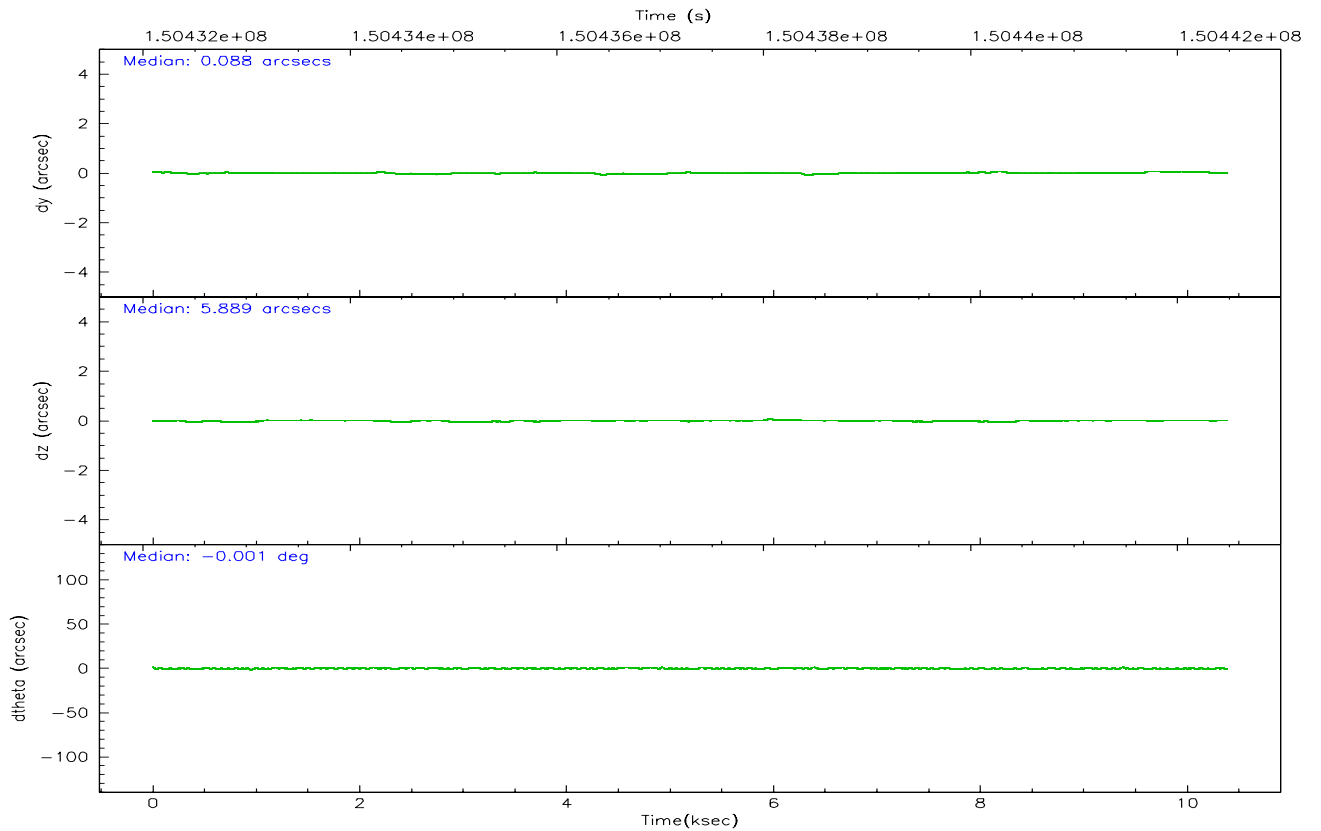
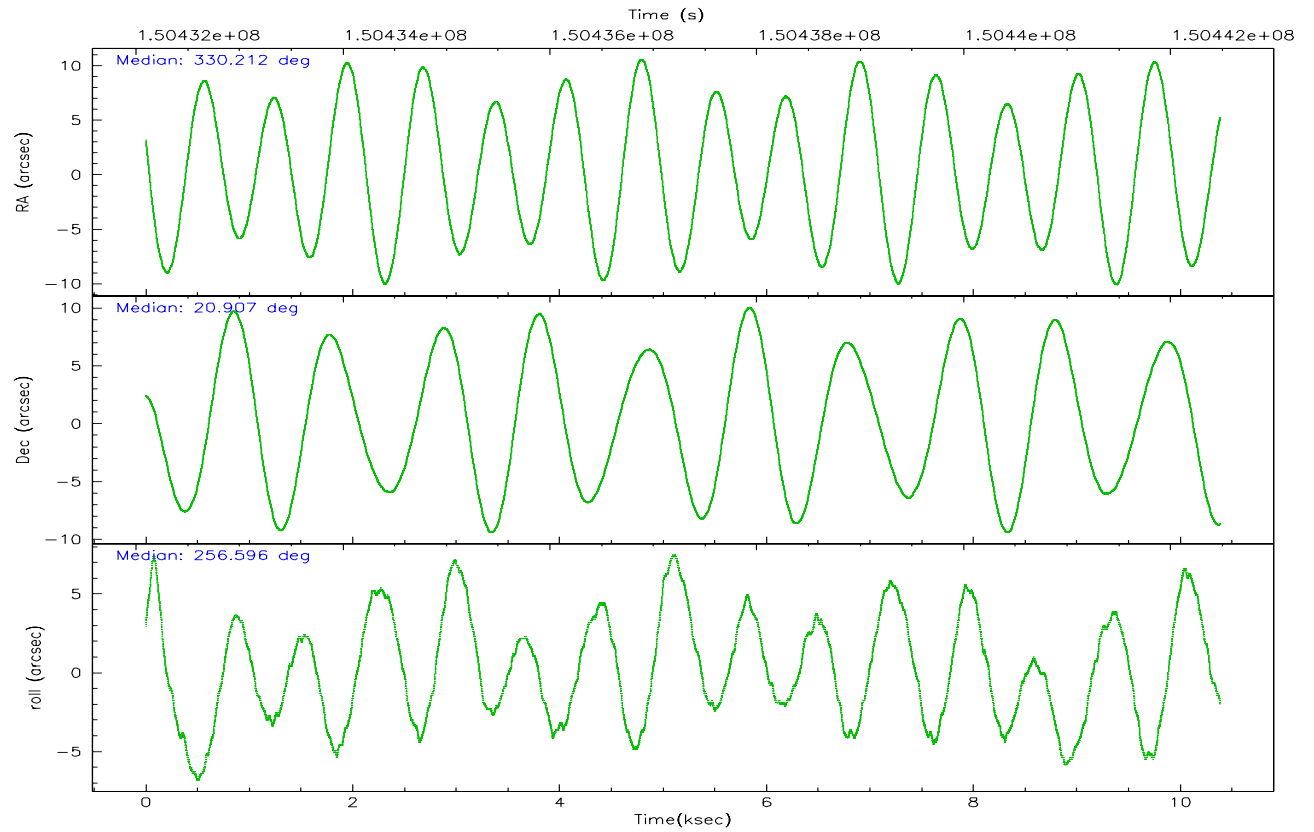
	ccd 0	ccd 1	ccd 2	ccd 3	ccd 6
grade 0 events	2125	2749	2063	11889	2015
	3%	5%	3%	16%	3%
grade 1 events	28	20	26	78	29
	0%	0%	0%	0%	0%
grade 2 events	1323	1405	1314	2262	1231
	2%	2%	2%	3%	2%
grade 3 events	701	817	599	1012	658
	1%	1%	0%	1%	1%
grade 4 events	619	727	661	969	660
	1%	1%	1%	1%	1%
grade 5 events	1958	2216	1865	2169	2131
	3%	4%	3%	3%	3%
grade 6 events	1046	1281	990	1373	1210
	1%	2%	1%	1%	2%
grade 7 events	46859	44260	53820	50748	49844
	85%	82%	87%	71%	86%

## 2.2 Compared Parameters

Parameter	Planned	Actual	Parameter	Planned	Actual
Instrument	ACIS	ACIS	Obspar format version number	6	6
Detector	ACIS-01236	ACIS-01236	Obspar file type	PREDICTED	ACTUAL
Grating	NONE	NONE	Obspar update status	NONE	UPDATED
Data mode	VFAINT	VFAINT	Number of optional ACIS chips dropped	0	0
Observation mode	POINTING	POINTING	On-chip summing requested	N	N
Pointing RA	330.203058	330.2114948667714	Subarray requested	NONE	NONE
Pointing Dec	20.932767	20.90651000103369	Alternating exposures requested	N	N
Pointing Roll	256.397647	256.6033296726941	Primary exposure time	0.000000	3.1
SIM focus pos (mm)	-0.782348	-0.7809083437167272			
SIM defocus (mm)	0	0.001439871863259334			
SIM translation stage pos (mm)	-225.840463	-225.848371962627			
SIM translation stage offset (mm)	-7.752	-7.744081040302689			
Observation start time	150432283.184000	150431216.42442			
Observation start date	2002-10-08T02:43:39	2002-10-08T02:26:56			
Observation end time	150442483.184000	150443069.52491			
Observation end date	2002-10-08T05:33:39	2002-10-08T05:44:29			
Read mode	TIMED	TIMED			

## 2.3 Aspect





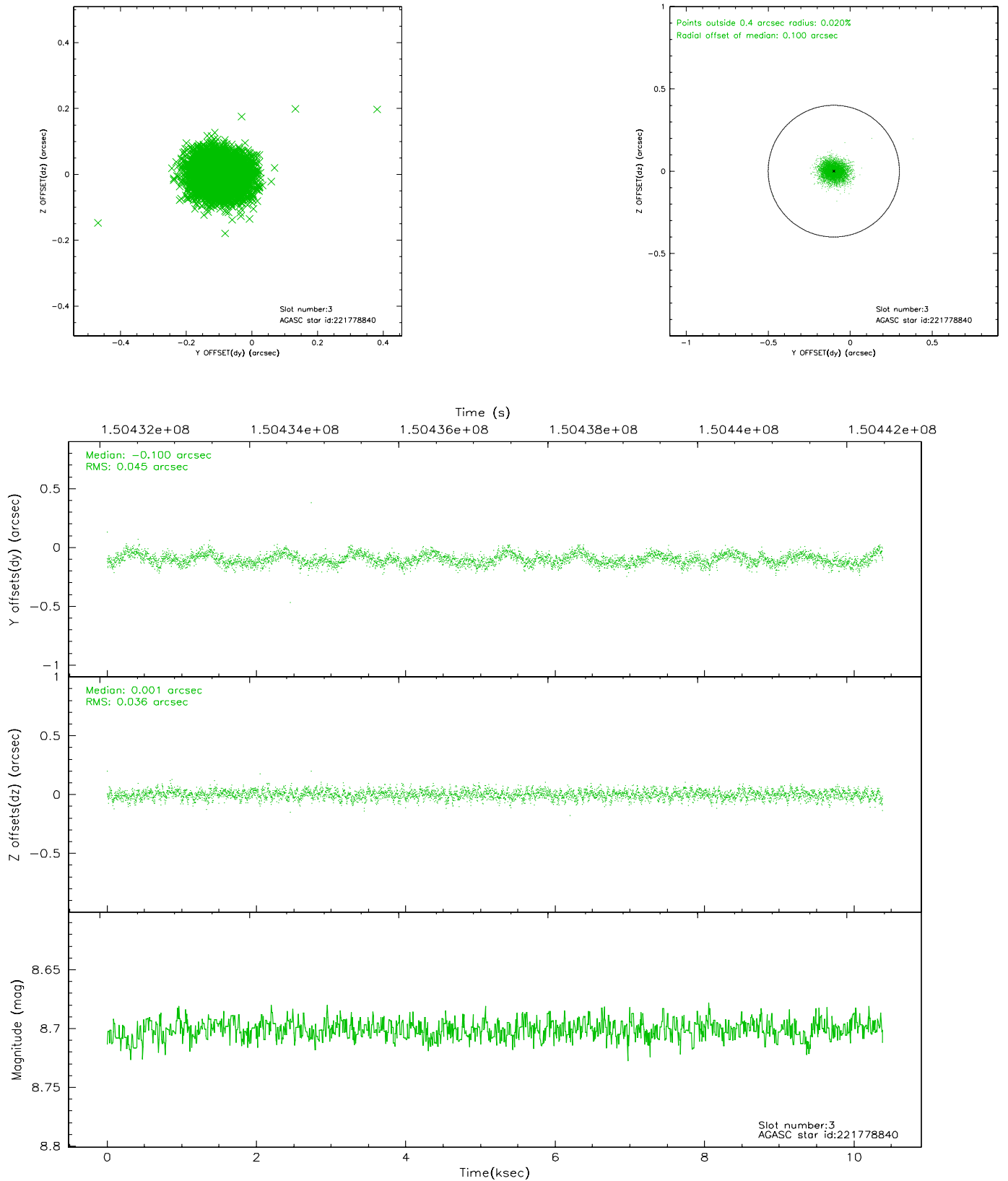
### Slot Statistics

slot	status	id	mag	n_pts	med_dy	med_dz	dr1	dr2	ra	dec	mean_y	mean_z
0	FID	ACIS-I-1	7.22	2532	0.064	-0.018	0.006	0.011	0.000000	0.000000	939.69	-988.26
1	FID	ACIS-I-5	7.23	2532	-0.184	0.078	0.006	0.010	0.000000	0.000000	-1808.35	909.06
2	FID	ACIS-I-6	7.26	2533	0.028	0.011	0.007	0.012	0.000000	0.000000	404.69	1554.04
3	GUIDE	221778840	8.70	5066	-0.100	0.001	0.061	0.099	330.146195	21.409956	-1624.42	-589.58
4	GUIDE	221130784	8.95	5063	0.074	-0.080	0.074	0.119	329.463663	20.512293	2052.62	-2068.61
5	GUIDE	221249800	9.08	5066	0.042	0.056	0.076	0.122	330.575920	20.463921	1344.17	1618.65
6	GUIDE	221252784	9.06	5062	0.005	0.052	0.071	0.114	330.625852	20.537459	1046.91	1720.11
7	GUIDE	221648560	9.30	5064	-0.023	-0.025	0.090	0.141	329.998765	21.543803	-1976.71	-1182.45

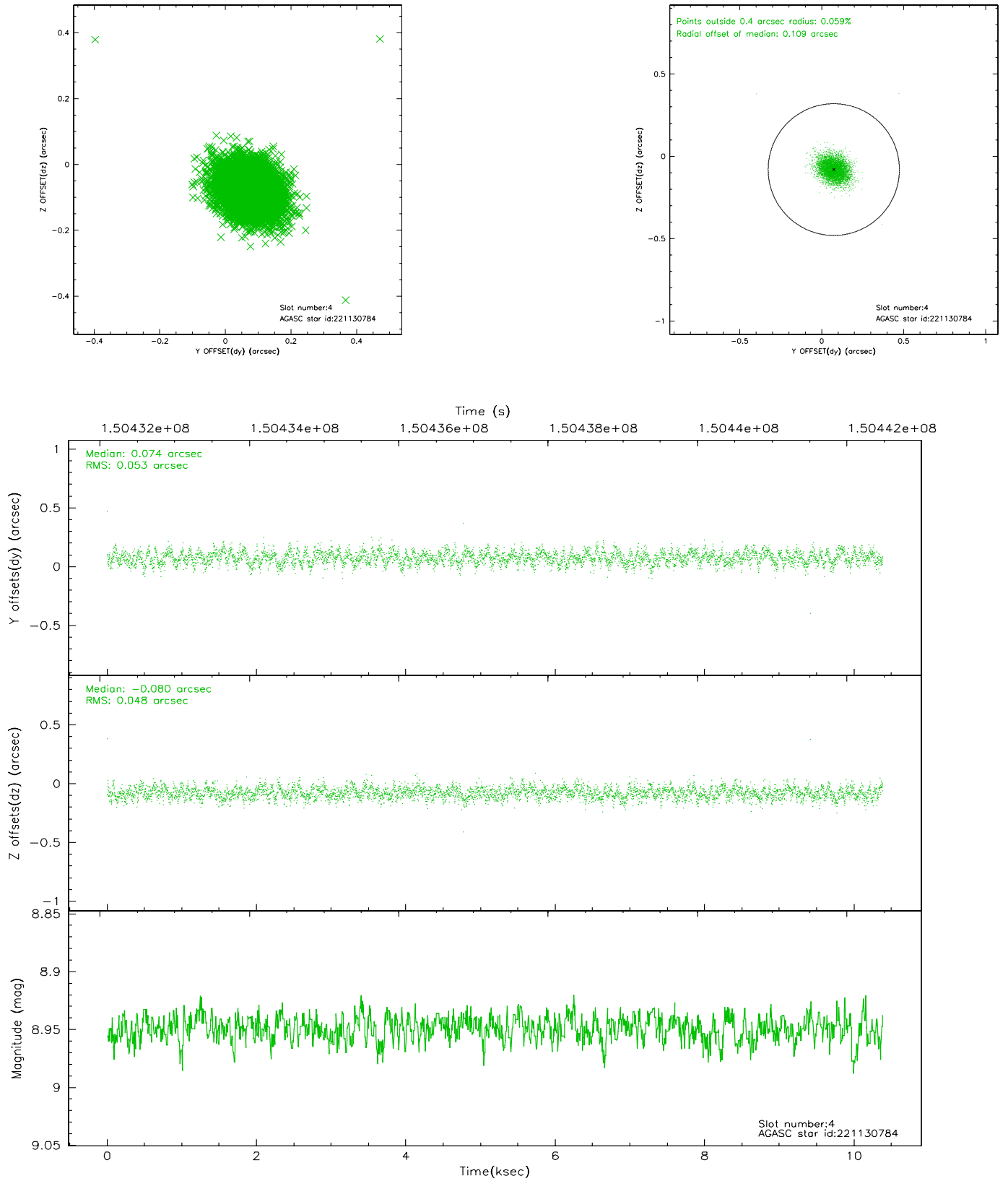


## 2.4 Star Slots

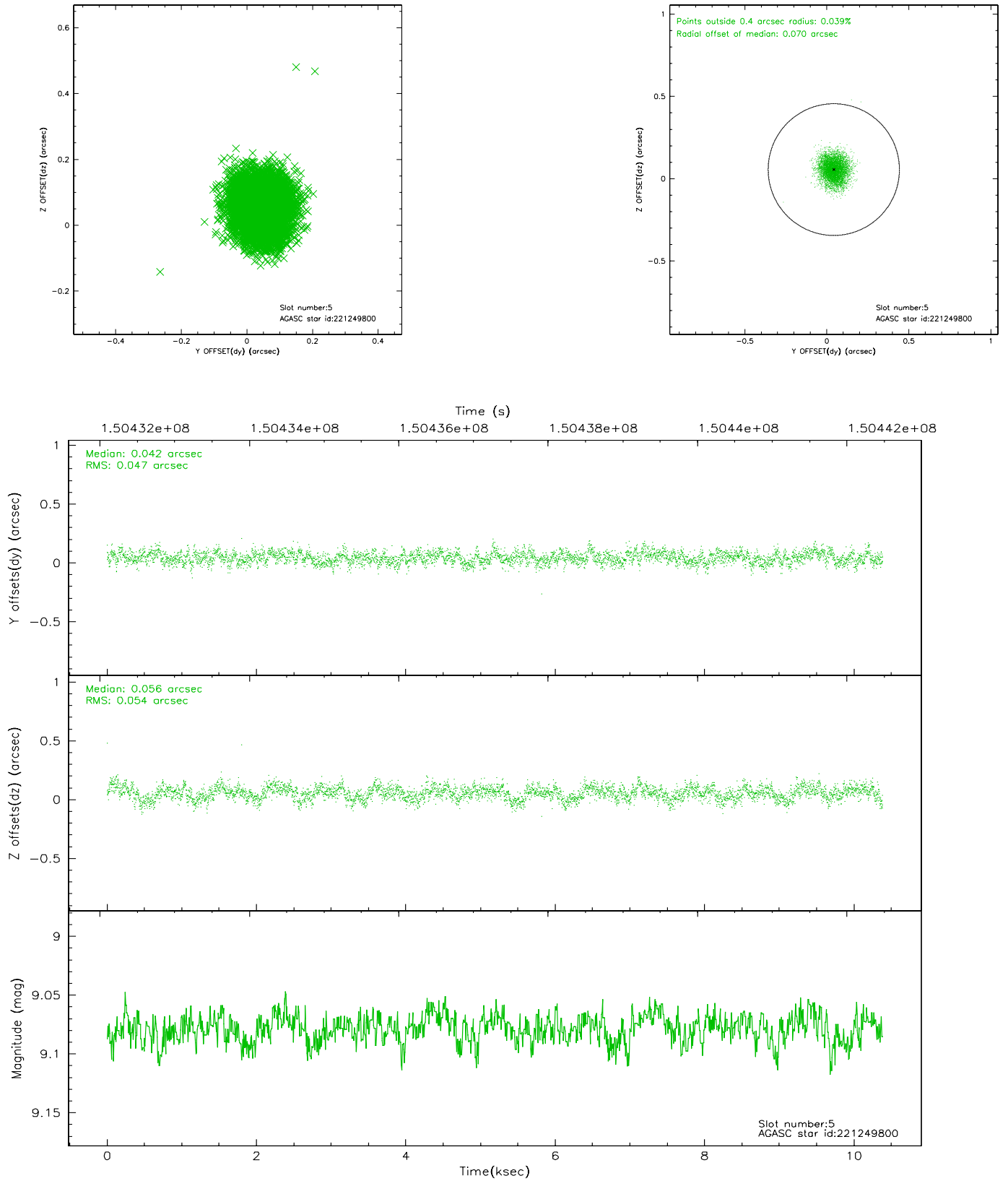
### 2.4.1 Slot 3



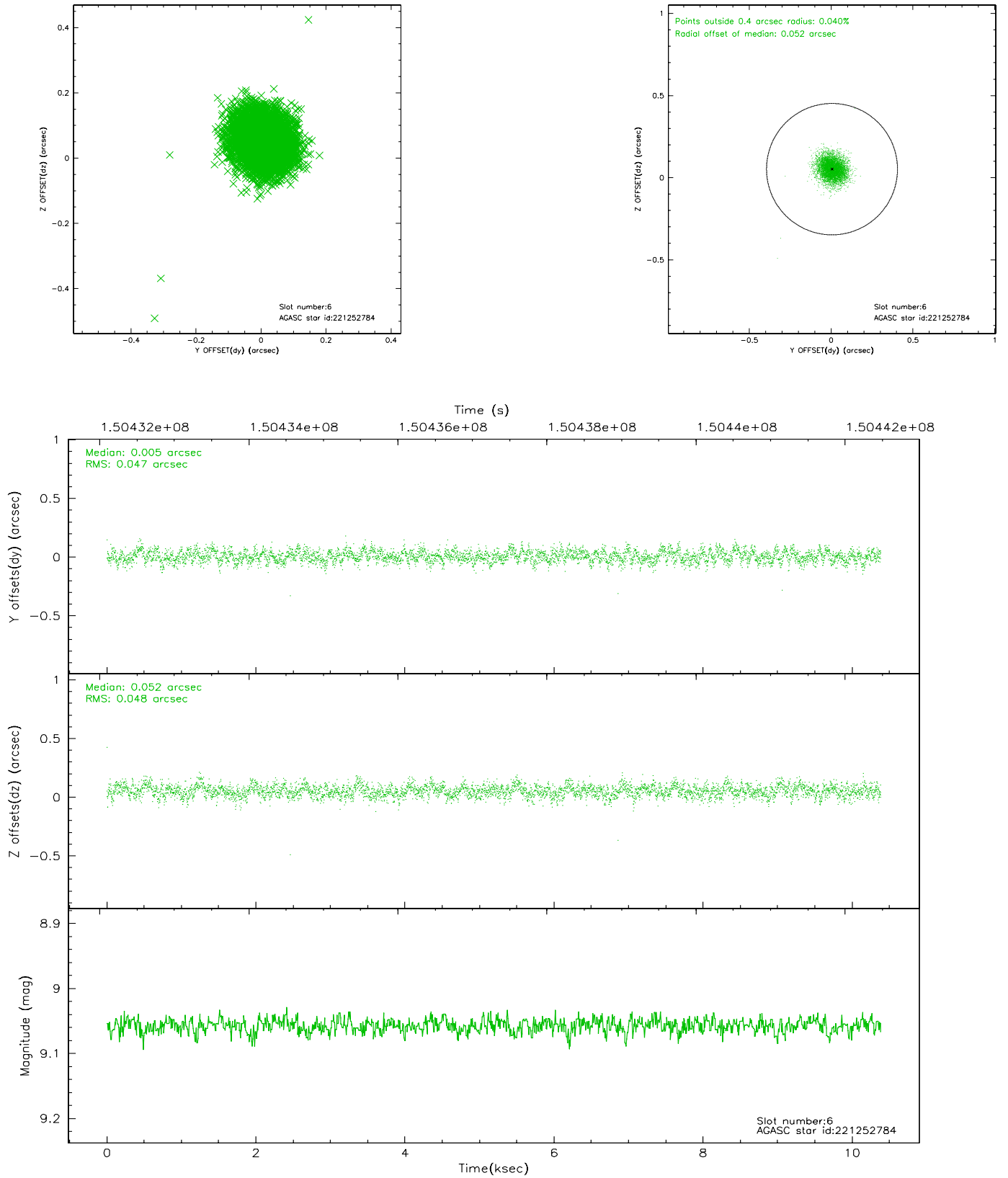
## 2.4.2 Slot 4



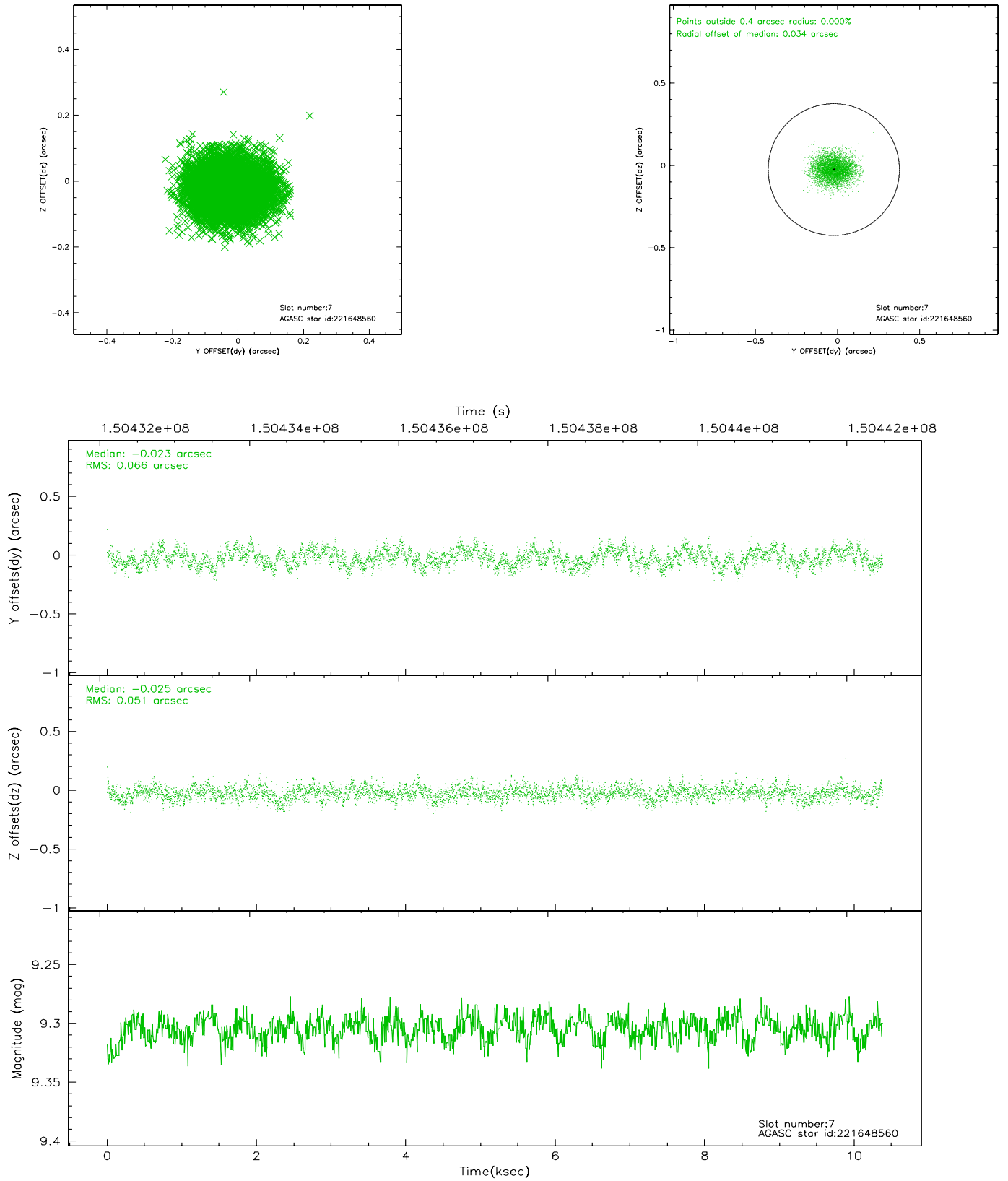
### 2.4.3 Slot 5



## 2.4.4 Slot 6



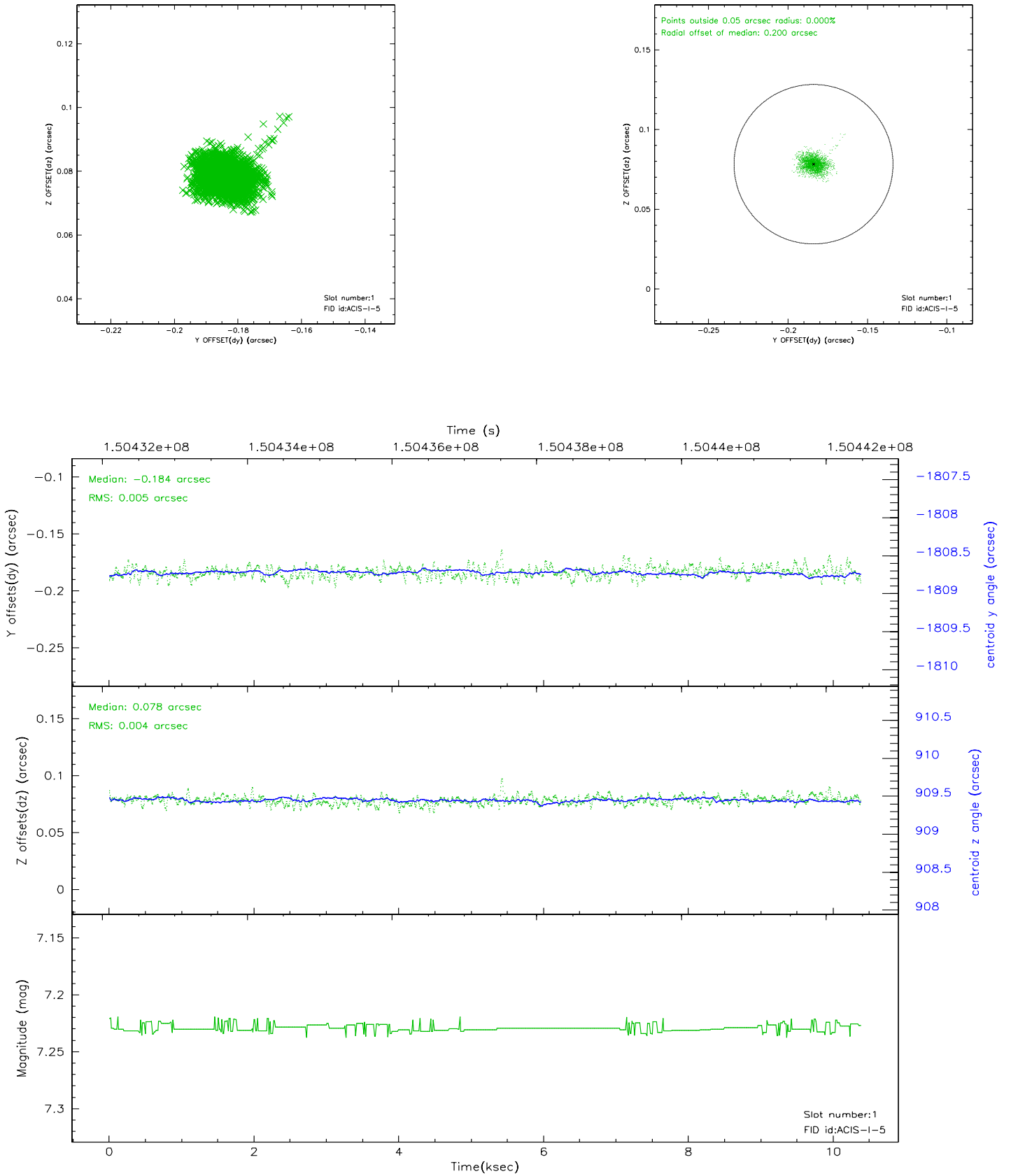
## 2.4.5 Slot 7



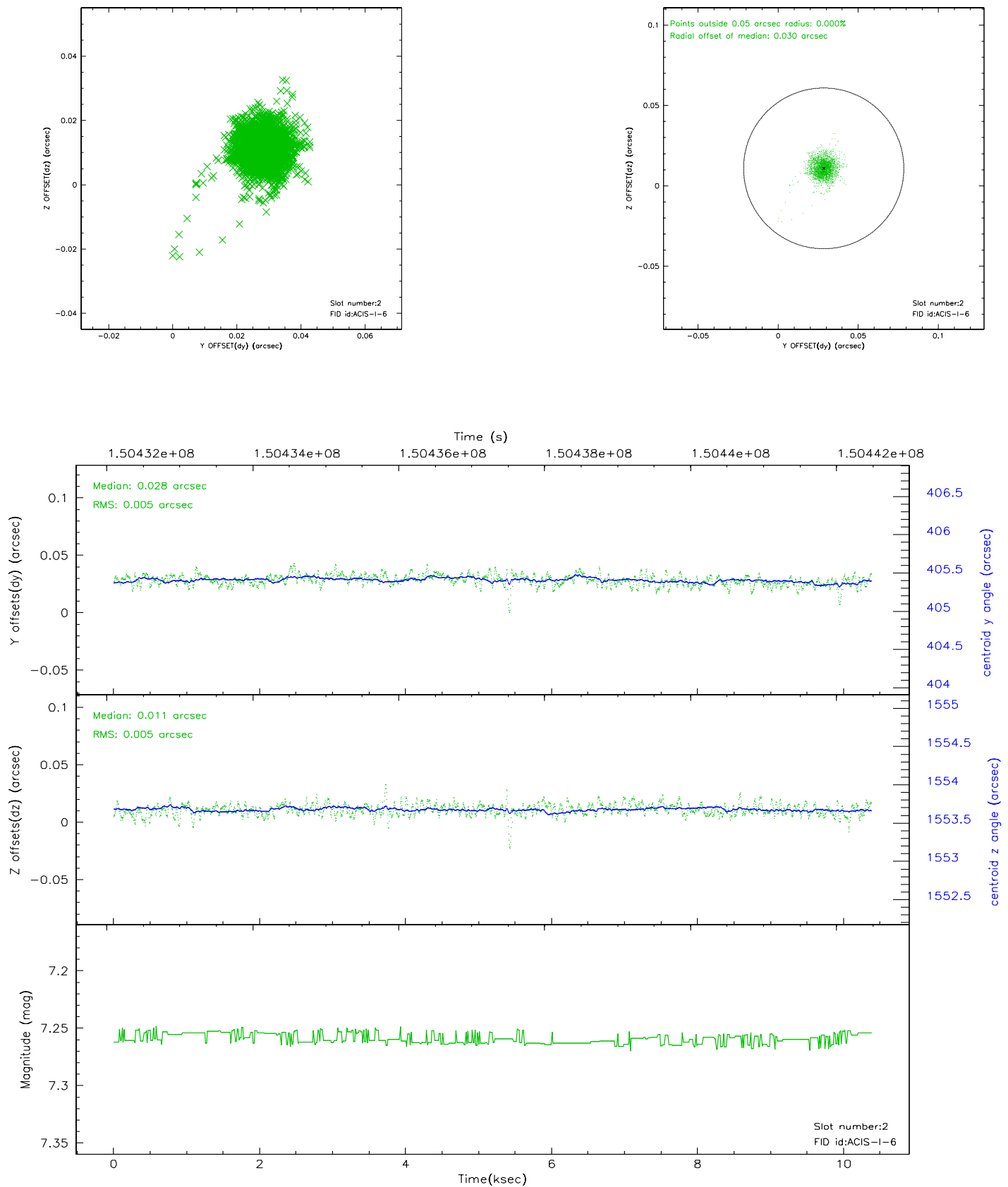
### 2.5.1 Slot 0



## 2.5.2 Slot 1

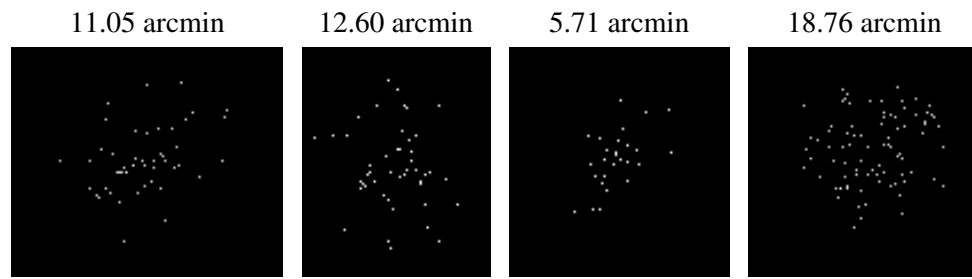


### 2.5.3 Slot 2





### 3 Point Sources



## A Summary

### A.1 Status

V&V Scientist	Beth Sundheim
V&V Date (YYYY-MM-DD)	2006.10.06
V&V Edition	1
V&V Disposition and Status	OK
V&V Charge Time	10.378

### A.2 Comments