

V&V Reference Report

L2 ASCDS Version : 7.6.9

Observation 3137 - L2 Version 001
Chandra X-Ray Center

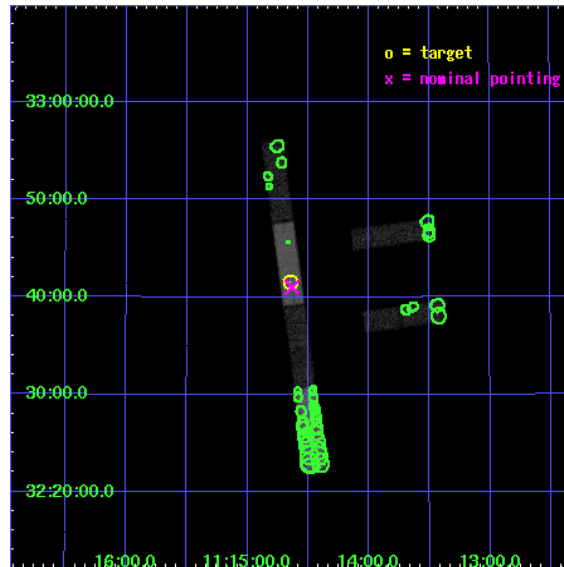
L2 Processing Date : Sep 21 2006

Contents

1	Front	2
2	OBI	3
2.1	OBI	3
2.1.1	Images	3
2.1.2	Bias	3
2.1.3	Parameters	4
2.1.4	Events	4
2.2	Compared Parameters	5
2.3	Aspect	6
2.4	Star Slots	9
2.4.1	Slot 3	9
2.4.2	Slot 4	10
2.4.3	Slot 5	11
2.4.4	Slot 6	12
2.4.5	Slot 7	13
2.5	FID Slots	14
2.5.1	Slot 0	14
2.5.2	Slot 1	15
2.5.3	Slot 2	16
3	Point Sources	17
A	Summary	18
A.1	Status	18
A.2	Comments	18

1 Front

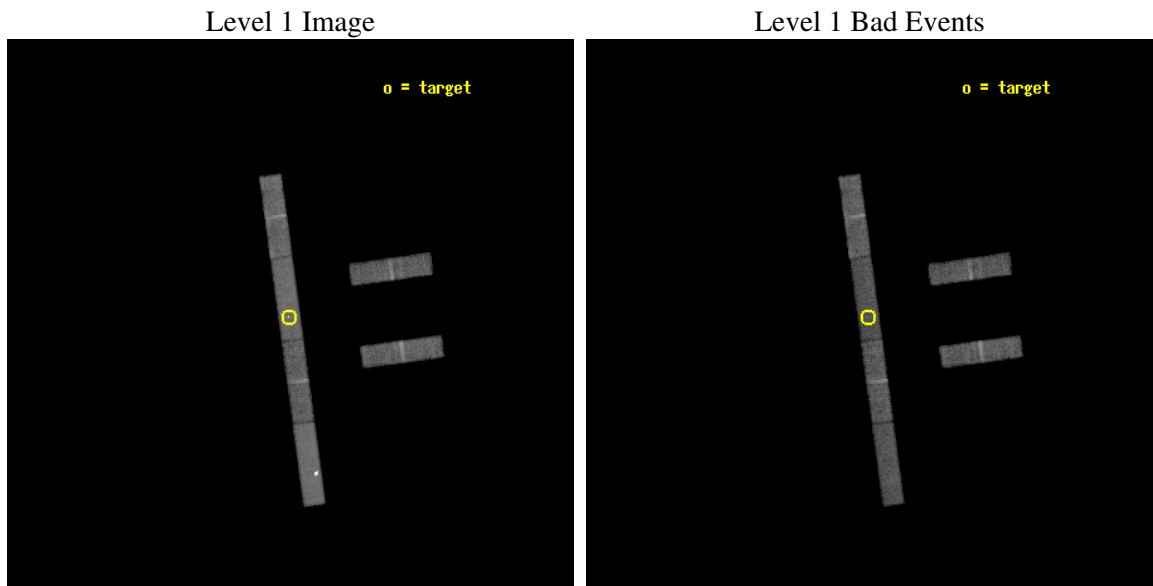
seq_num	700576
obs_id	3137
title	SEARCHING FOR MISSING LINK BETWEEN ULTLALUMINOUS INFRARED GALAXIES AND OPTICALLY-SELECTED QUASARS
observer	Dr. Naohisa Anabuki
object	IRAS 11119+3257
dtcycle	0
cycle	P
ra_targ	168.662083
dec_targ	32.692583
ra_nom	168.65854627647
dec_nom	32.683378814503
roll_nom	262.21465485191
revision	2
ontime	18873.758887649
livetime	18194.922856704
ontime2	18873.758887649
ontime3	18874.899897724
ontime5	18874.899897724
ontime6	18874.899897724
ontime7	18873.758887649
ontime8	18874.899897724
l2events	70449



2 OBI

2.1 OBI

2.1.1 Images



2.1.2 Bias

Chip 2

Chip 3

Chip 5



Chip 6

Chip 7

Chip 8



2.1.3 Parameters

obi_num	0
ascdsver	7.6.9
caldbver	3.2.3
date	2006-09-21T06:56:44
revision	2

sched_exp_time	18322.900000
ontime	18875.985124022
ontime2	18875.985124022
ontime3	18877.126134098
ontime5	18877.126134098
ontime6	18877.126134098
ontime7	18875.985124022
ontime8	18877.126134098
l1events	295929

2.1.4 Events

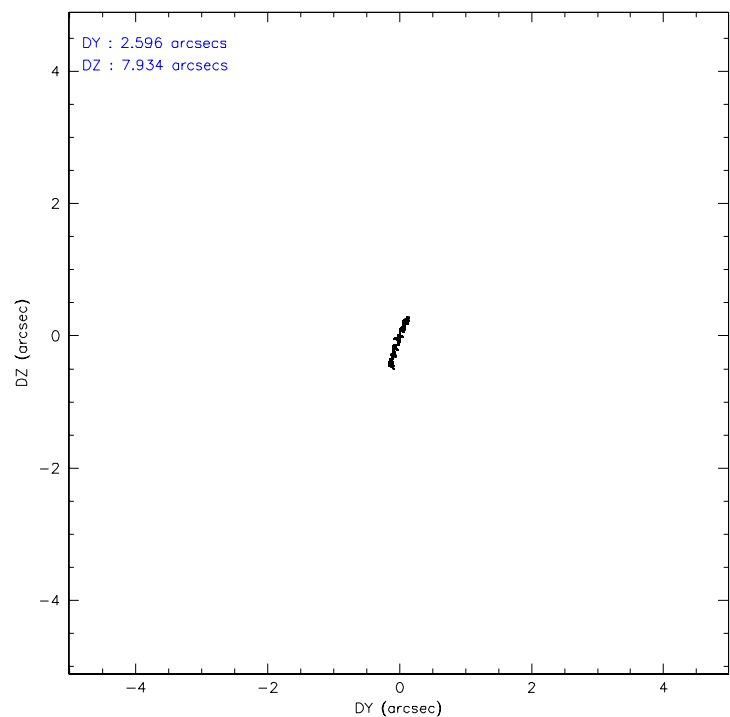
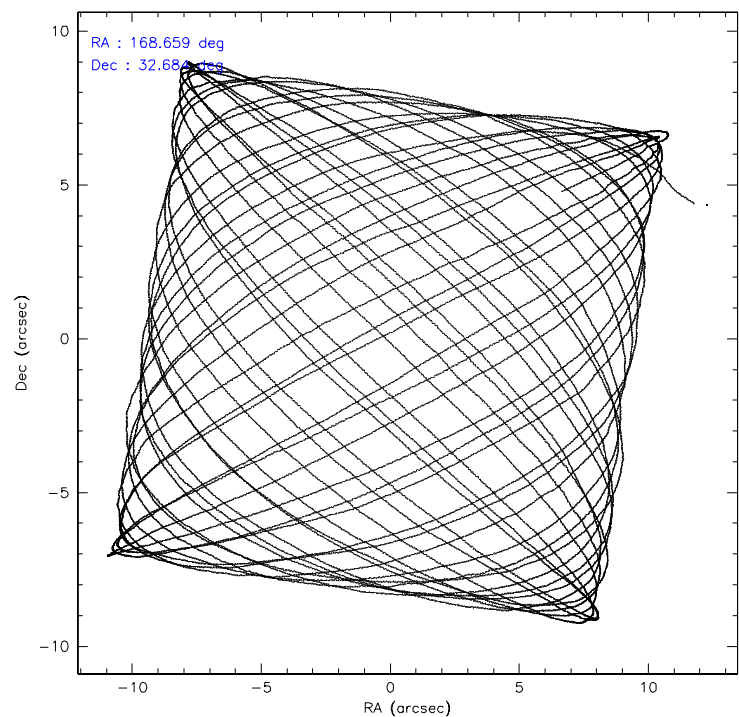
	ccd 2	ccd 3	ccd 5	ccd 6	ccd 7	ccd 8
level 1 events	43690	38768	68456	39966	54256	50793
rejected events	38565	34036	27324	34830	26755	40826
rejected %	88%	87%	39%	87%	49%	80%

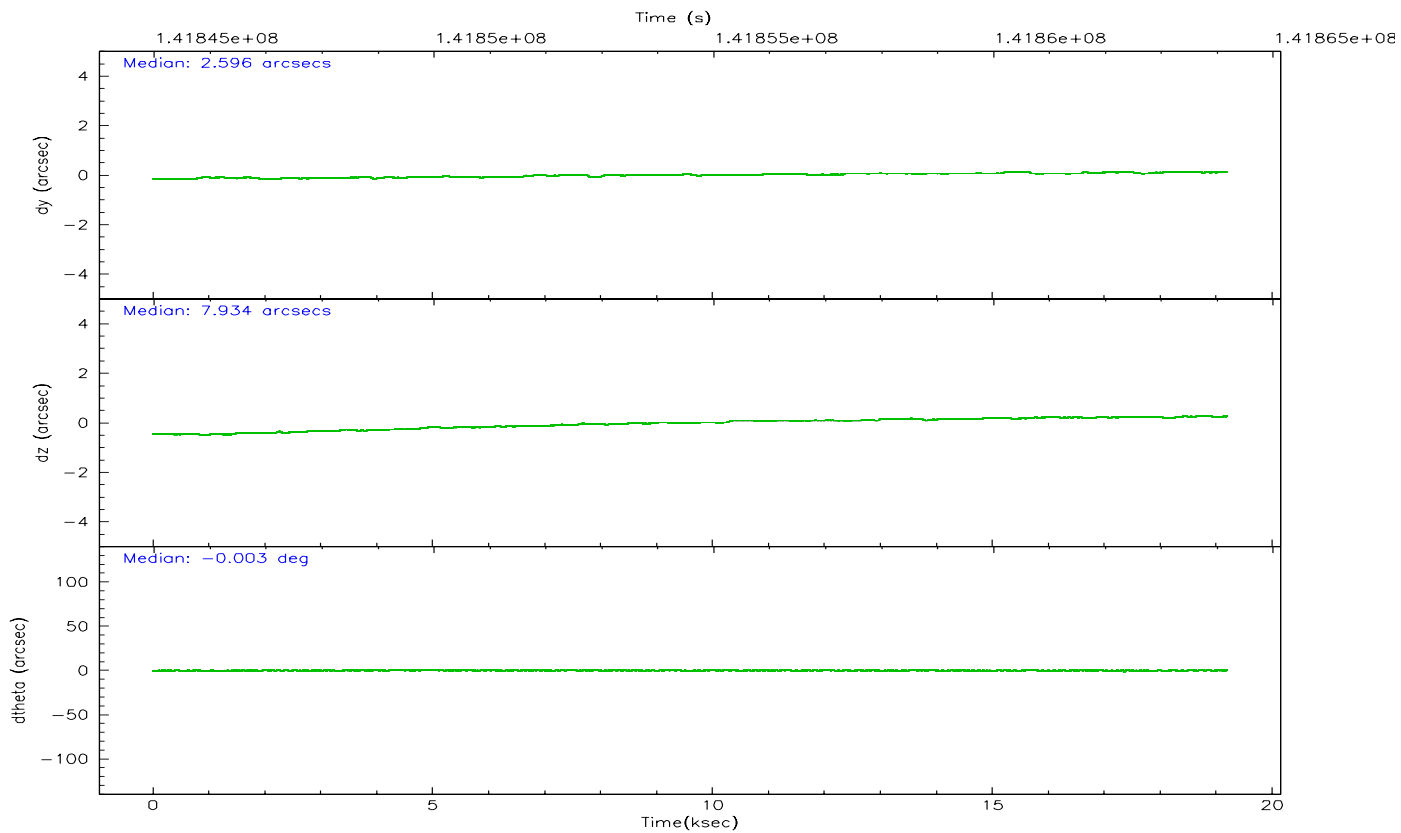
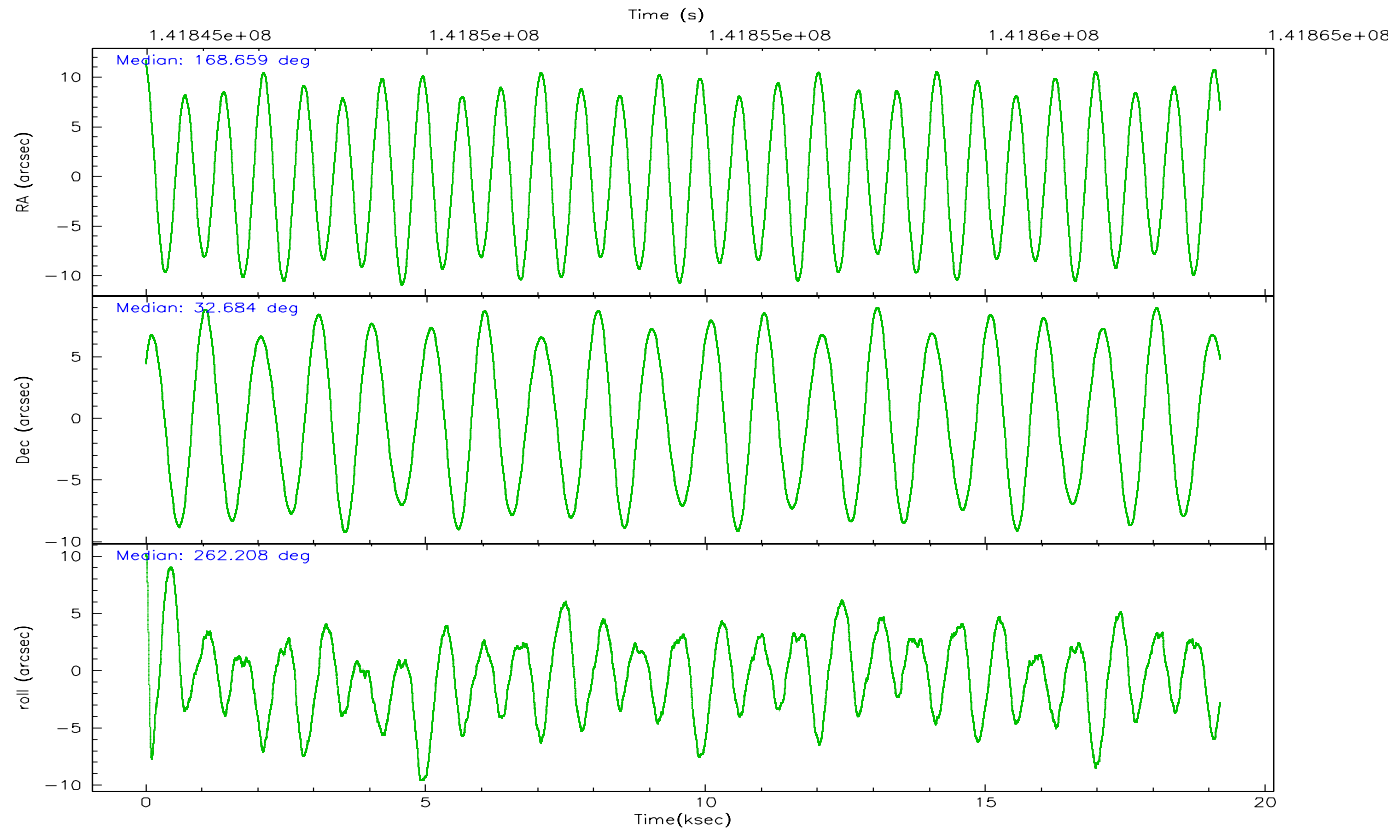
	ccd 2	ccd 3	ccd 5	ccd 6	ccd 7	ccd 8
grade 0 events	2193	2070	16036	2110	2953	3176
	5%	5%	23%	5%	5%	6%
grade 1 events	18	16	54	12	42	21
	0%	0%	0%	0%	0%	0%
grade 2 events	953	792	8498	857	6539	1995
	2%	2%	12%	2%	12%	3%
grade 3 events	639	605	1059	675	2117	1062
	1%	1%	1%	1%	3%	2%
grade 4 events	615	572	981	678	2026	1021
	1%	1%	1%	1%	3%	2%
grade 5 events	1251	1269	2503	1421	3262	1726
	2%	3%	3%	3%	6%	3%
grade 6 events	726	693	14562	816	13867	2713
	1%	1%	21%	2%	25%	5%
grade 7 events	37295	32751	24763	33397	23450	39079
	85%	84%	36%	83%	43%	76%

2.2 Compared Parameters

Parameter	Planned	Actual	Parameter	Planned	Actual
Instrument	ACIS	ACIS	Obspar format version number	6	6
Detector	ACIS-235678	ACIS-235678	Obspar file type	PREDICTED	ACTUAL
Grating	NONE	NONE	Obspar update status	NONE	UPDATED
Data mode	FAINT	FAINT	Number of optional ACIS chips dropped	0	0
Observation mode	POINTING	POINTING	On-chip summing requested	N	N
Pointing RA	168.645916	168.658546276475	Subarray requested	1/4	1/4
Pointing Dec	32.708447	32.68337881450272	Subarray start row	0	385
Pointing Roll	262.064833	262.2146548519079	Subarray row count	1024	256
SIM focus pos (mm)	-0.684267	-0.6828225247311905	Alternating exposures requested	N	N
SIM defocus (mm)	0	0.001444936568705701	Primary exposure time	0.000000	1.1
SIM translation stage pos (mm)	-190.132523	-190.1400660498719			
SIM translation stage offset (mm)	0	0.00754346686406393			
Observation start time	141845850.184000	141844550.70797			
Observation start date	2002-06-30T17:36:26	2002-06-30T17:15:50			
Observation end time	141864173.184000	141864487.98379			
Observation end date	2002-06-30T22:41:49	2002-06-30T22:48:07			
Read mode	TIMED	TIMED			

2.3 Aspect



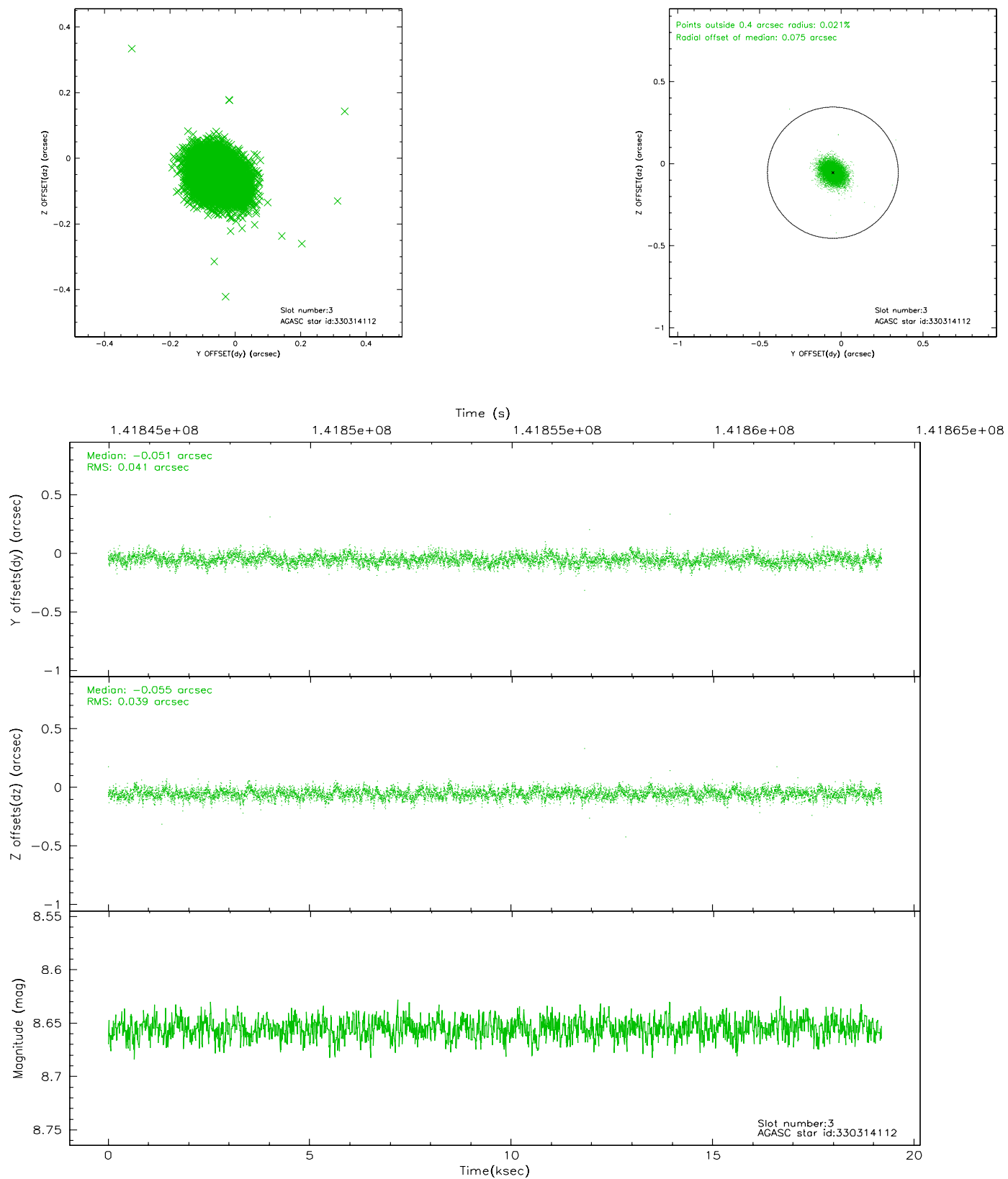


Slot Statistics

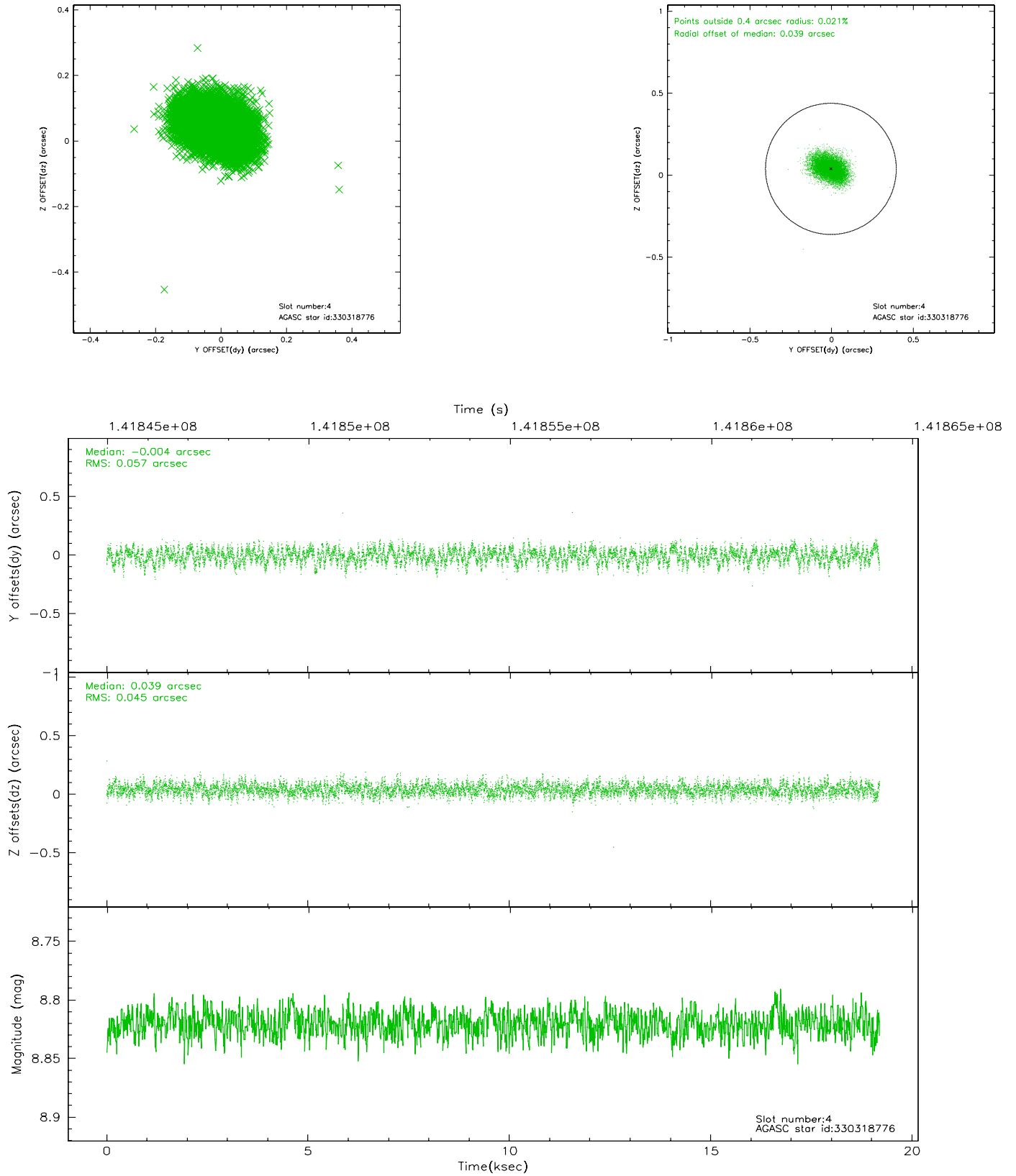
slot	status	id	mag	n_pts	med_dy	med_dz	dr1	dr2	ra	dec	mean_y	mean_z
0	FID	ACIS-S-2	7.11	4682	0.009	0.034	0.008	0.013	0.000000	0.000000	-755.23	-1729.04
1	FID	ACIS-S-4	7.20	4681	-0.089	-0.014	0.007	0.012	0.000000	0.000000	2157.88	179.16
2	FID	ACIS-S-5	7.23	4680	0.048	-0.012	0.008	0.015	0.000000	0.000000	-1807.75	173.10
3	GUIDE	330314112	8.65	9361	-0.051	-0.055	0.059	0.097	168.786435	32.997677	-1089.09	275.73
4	GUIDE	330318776	8.82	9358	-0.004	0.039	0.076	0.125	169.380140	32.881067	-928.83	2111.10
5	GUIDE	330319696	9.00	9355	0.055	-0.062	0.084	0.140	168.037424	32.614753	584.88	-1781.99
6	GUIDE	330310488	9.60	9347	0.119	-0.016	0.093	0.153	168.814332	32.160079	1885.22	780.34
7	GUIDE	330316536	9.35	9359	-0.119	0.091	0.112	0.178	169.386658	33.276438	-2339.73	1924.13

2.4 Star Slots

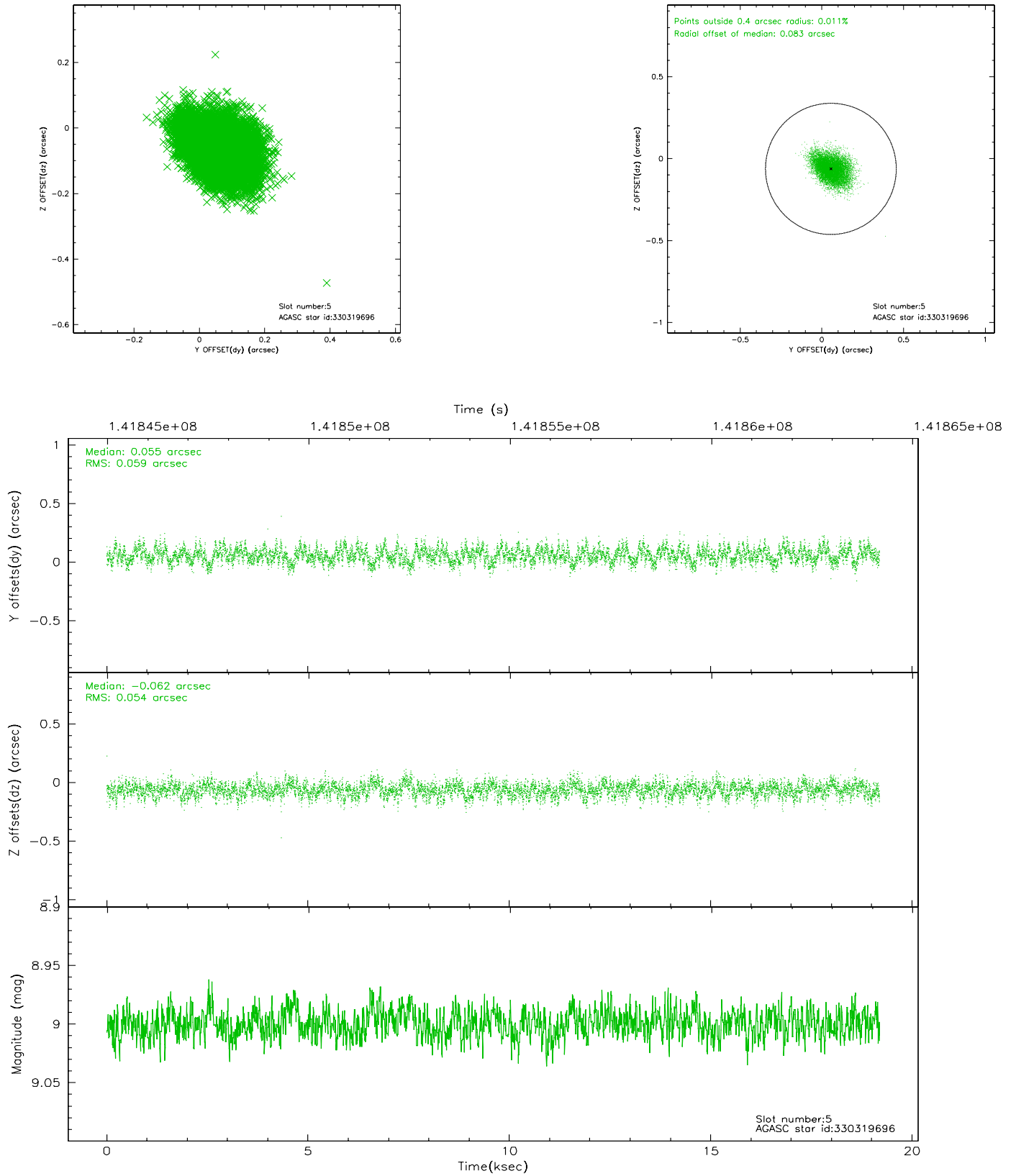
2.4.1 Slot 3



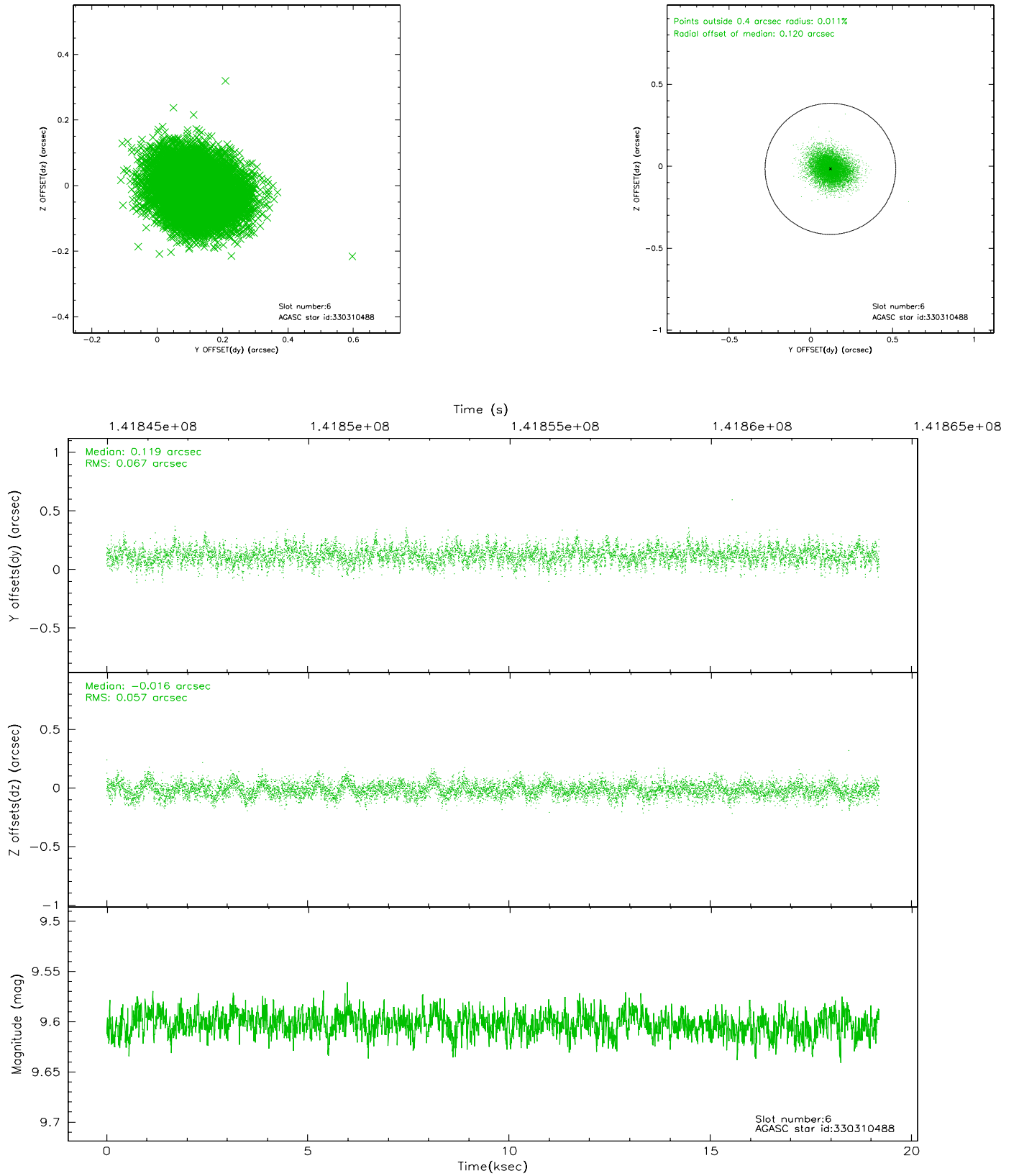
2.4.2 Slot 4



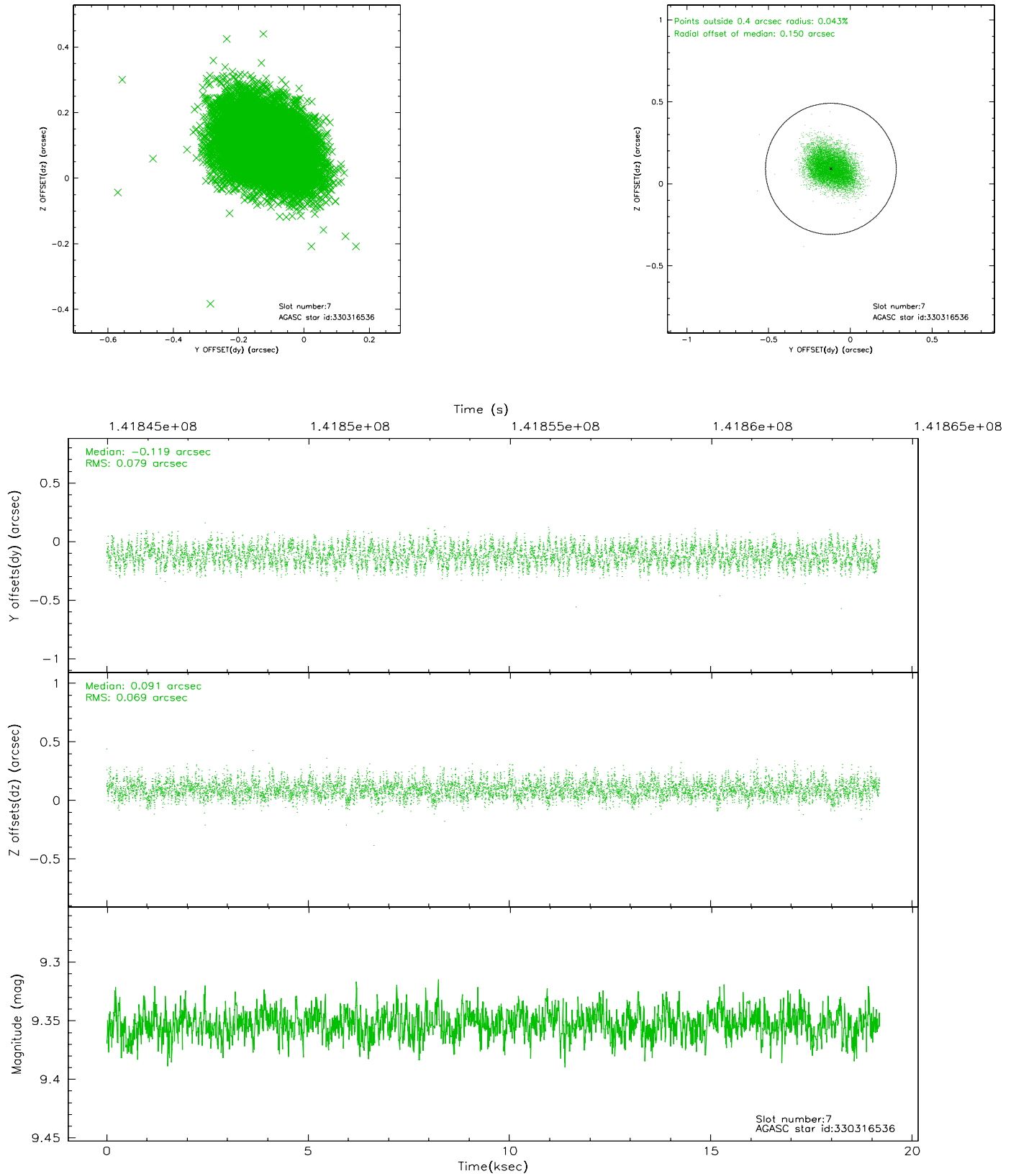
2.4.3 Slot 5



2.4.4 Slot 6

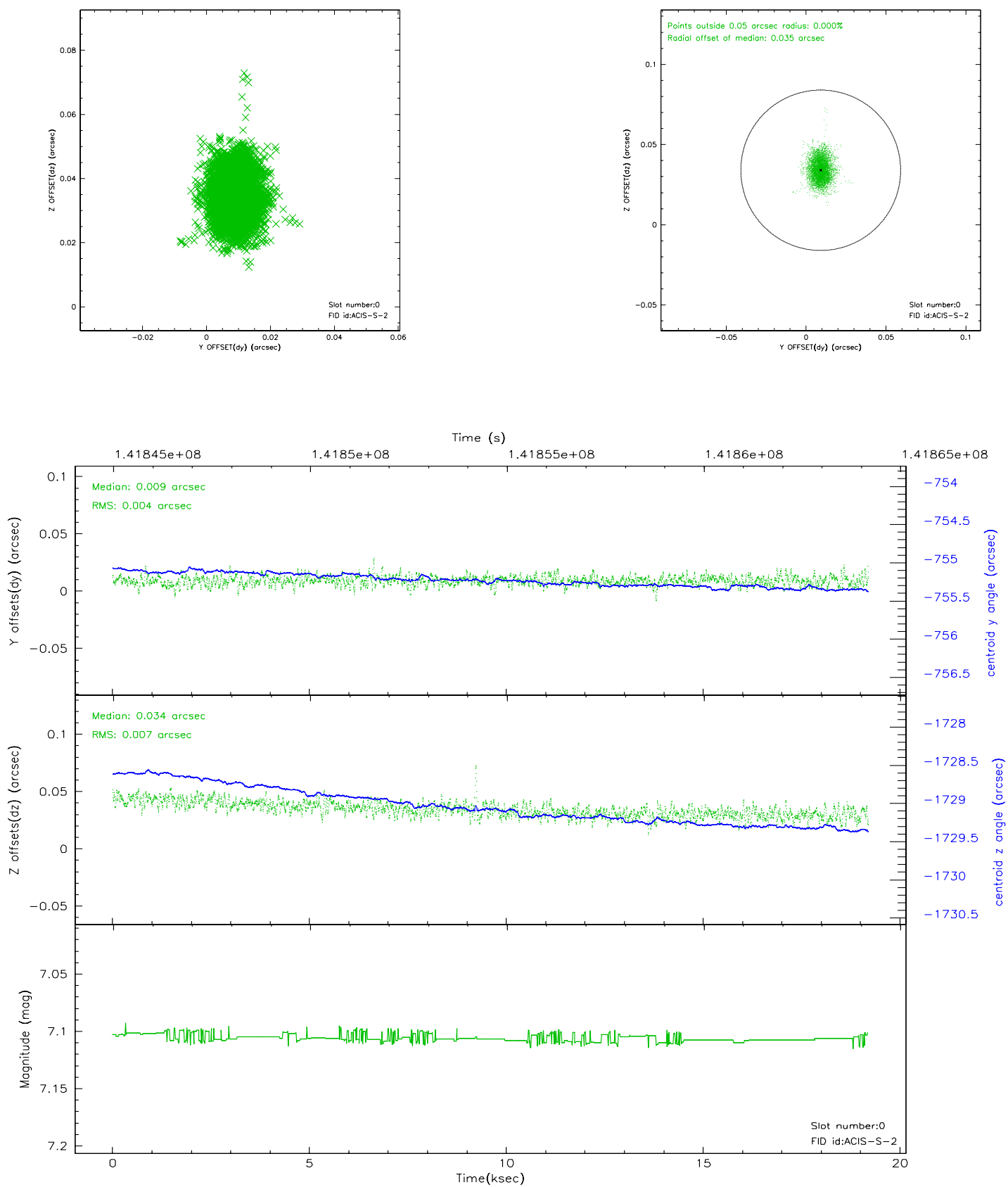


2.4.5 Slot 7

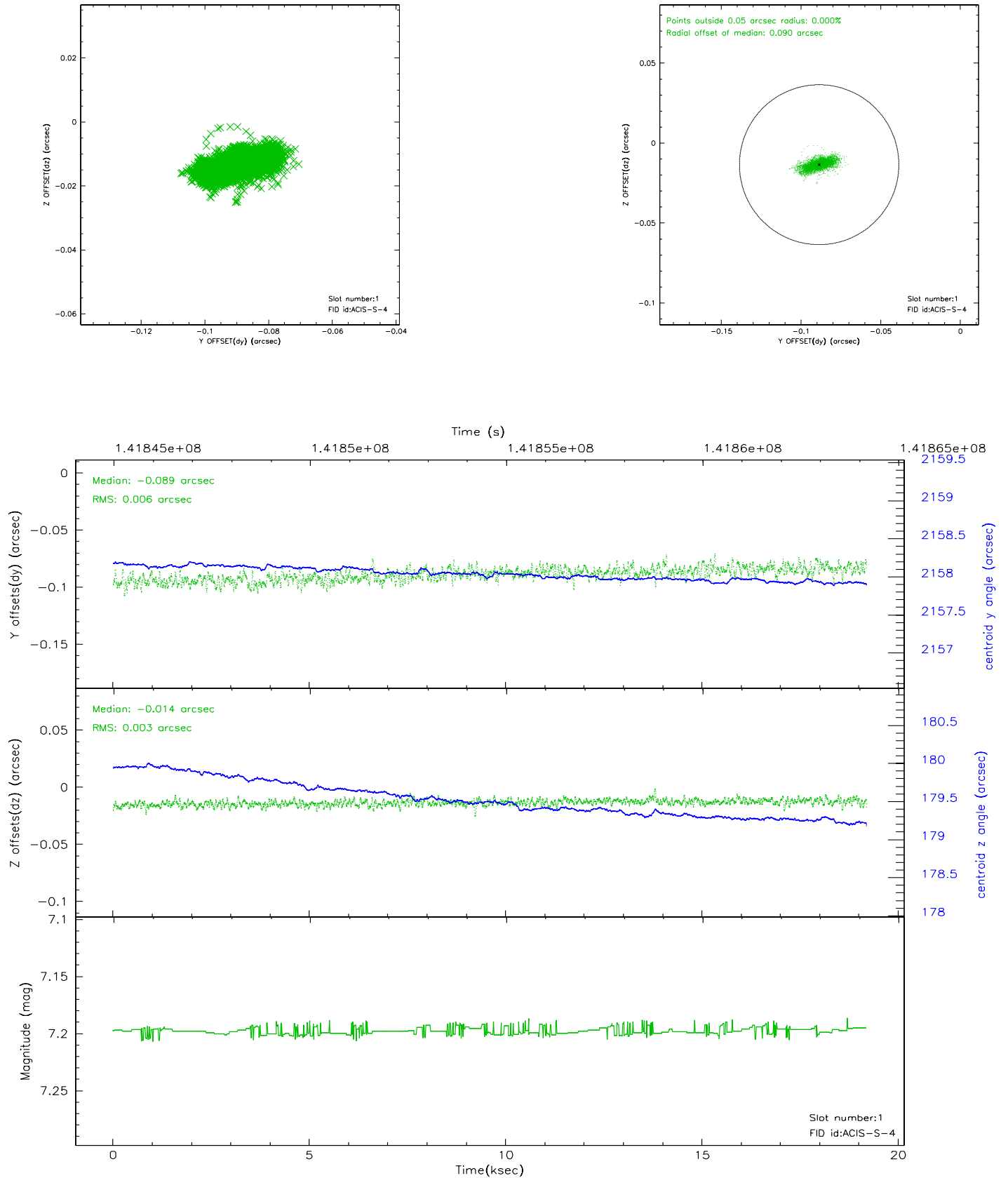


2.5 FID Slots

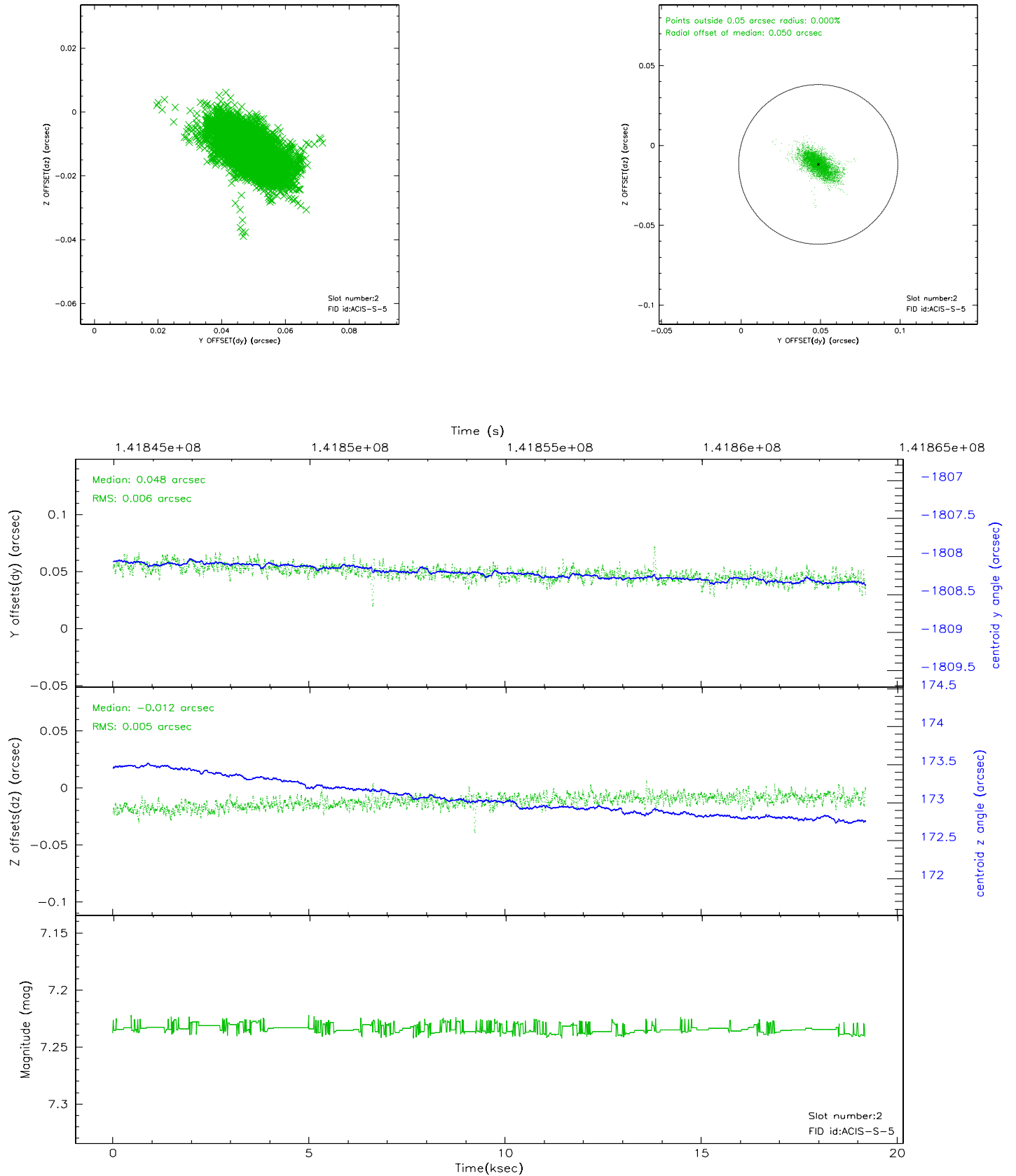
2.5.1 Slot 0



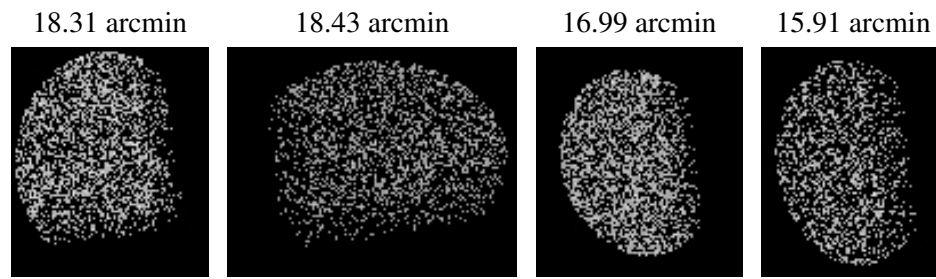
2.5.2 Slot 1



2.5.3 Slot 2



3 Point Sources



A Summary

A.1 Status

V&V Scientist	Beth Sundheim
V&V Date (YYYY-MM-DD)	2006.09.21
V&V Edition	1
V&V Disposition and Status	OK
V&V Charge Time	18.875

A.2 Comments