

V&V Reference Report

L2 ASCDS Version : 8.4.5

Observation 3117 - L2 Version 3
Chandra X-Ray Center

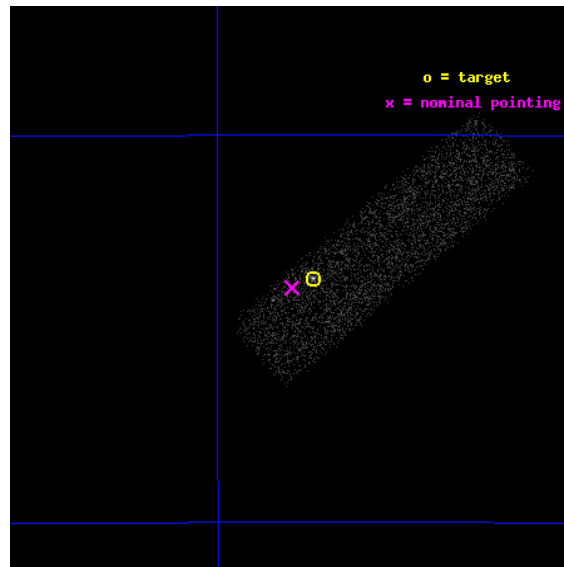
L2 Processing Date : Oct 5 2012

Contents

1	Front	2
2	OBI	3
2.1	OBI	3
2.1.1	Images	3
2.1.2	Bias	3
2.1.3	Parameters	4
2.1.4	Events	4
2.2	Compared Parameters	5
2.3	Aspect	6
2.4	Star Slots	9
2.4.1	Slot 3	9
2.4.2	Slot 4	10
2.4.3	Slot 5	11
2.4.4	Slot 6	12
2.4.5	Slot 7	13
2.5	FID Slots	14
2.5.1	Slot 0	14
2.5.2	Slot 1	15
2.5.3	Slot 2	16
A	Summary	17
A.1	Status	17
A.2	Comments	17

1 Front

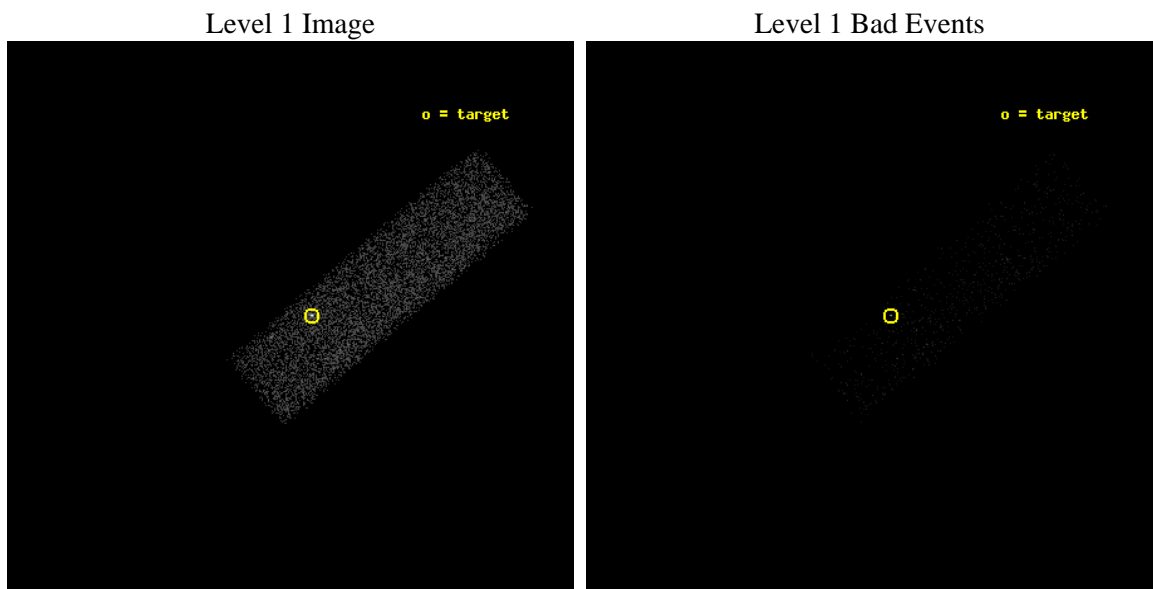
seq_num	700556	Sequence number
obs_id	3117	Observation id
title	A COMPLETE SURVEY FOR X-RAY EMISSION FROM RADIO JETS	Proposal titl
observer	Dr. Herman Marshall	Principal investigator
object	1145-676	Source name
dtcycle	0	
cycle	P	events from which exps? Prim/Second/Both
ra_targ	176.89	Observer's specified target RA [deg]
dec_targ	-67.894917	Observer's specified target Dec [deg]
ra_nom	176.91420863953	Nominal RA [deg]
dec_nom	-67.899058425995	Nominal Dec [deg]
roll_nom	319.70265173797	Nominal Roll [deg]
revision	3	Processing version of data
ontime	4857.6000723839	Sum of GTIs [s]
livetime	4620.5650835955	Livetime [s]
ontime7	4857.6000723839	Sum of GTIs [s]
l2events	6555	Number of level 2 events



2 OBI

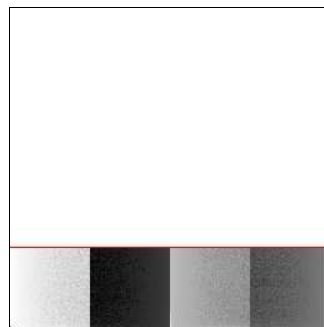
2.1 OBI

2.1.1 Images



2.1.2 Bias

Chip 7



2.1.3 Parameters

obi_num	1	Obi number	sched_exp_time	4700.000000	[s] Scheduled observation exposure time
ascdsver	8.4.5	Processing system revision	ontime	4857.6000723839	Sum of GTIs [s]
caldsver	4.5.2	 	ontime7	4857.6000723839	Sum of GTIs [s]
date	2012-10-05T16:31:21	Date and time of file creation	l1events	13661	Number of level 1 events
revision	3	Processing version of data			

2.1.4 Events

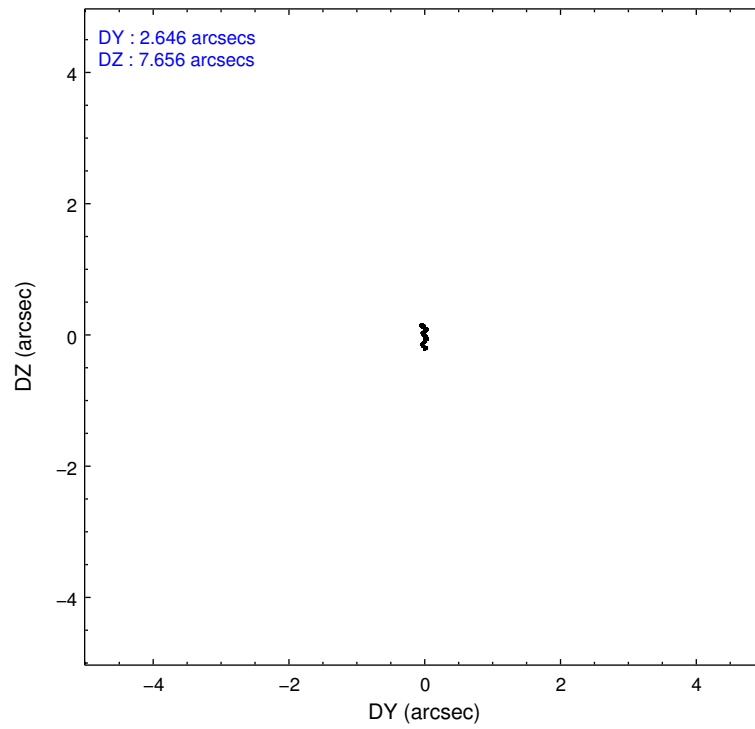
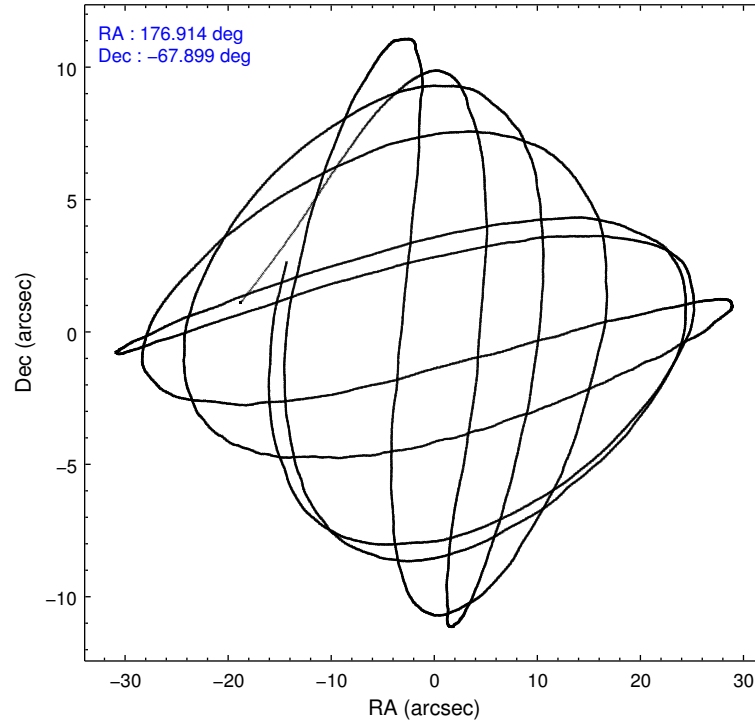
	ccd 7
level 1 events	13661
rejected events	6981
rejected %	51%

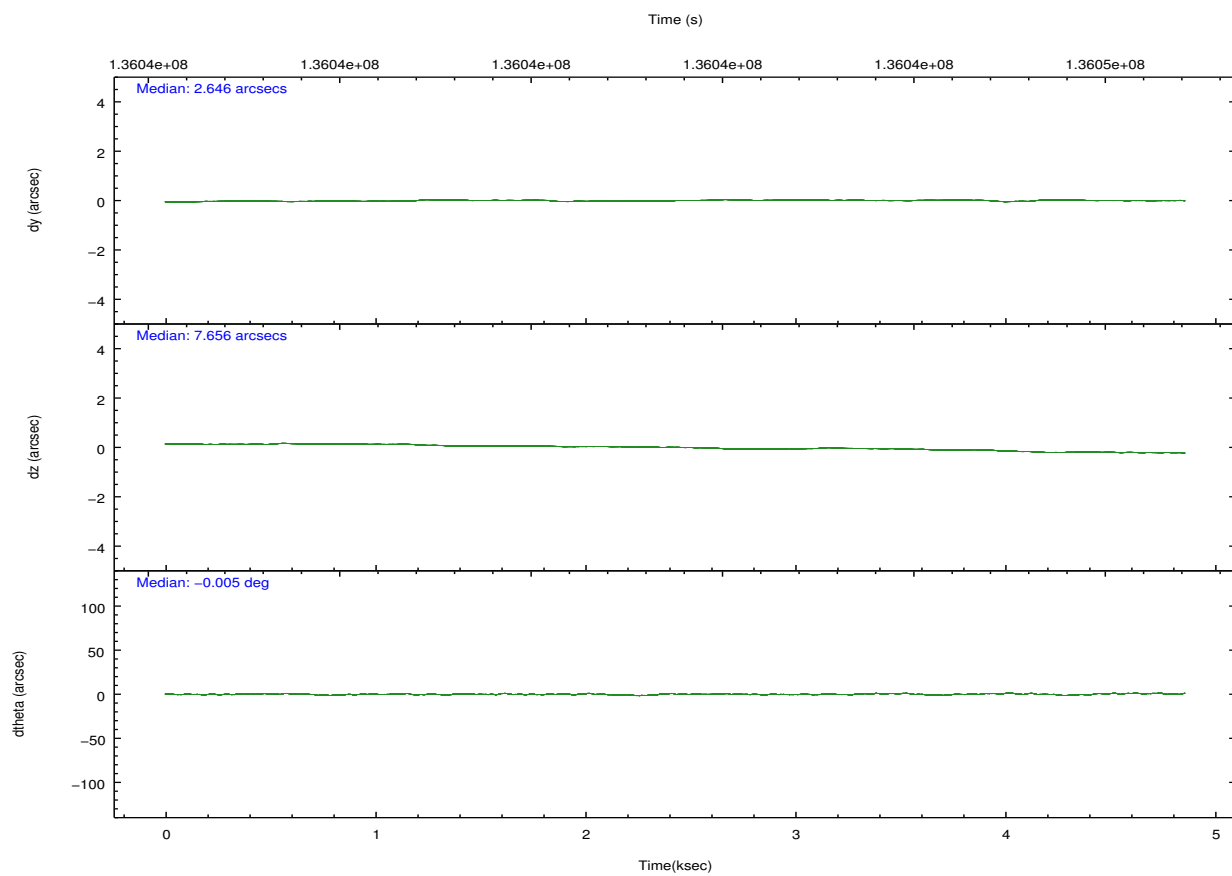
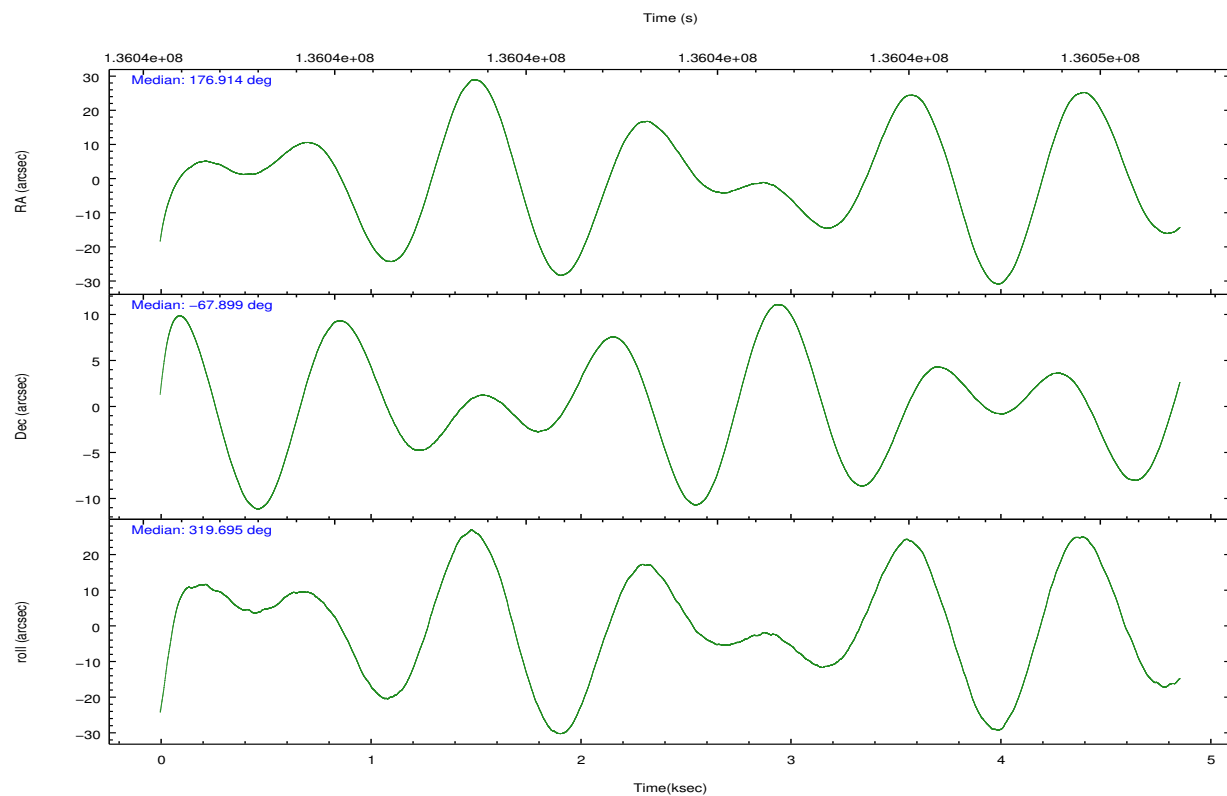
	ccd 7
grade 0 events	923
	6%
grade 1 events	24
	0%
grade 2 events	1562
	11%
grade 3 events	807
	5%
grade 4 events	770
	5%
grade 5 events	1077
	7%
grade 6 events	3372
	24%
grade 7 events	5126
	37%

2.2 Compared Parameters

Parameter	Planned	Actual	Parameter	Planned	Actual
Instrument	ACIS	ACIS	Obspar format version number	7	7
Detector	ACIS-7	ACIS-7	Obspar file type	PREDICTED	ACTUAL
Grating	NONE	NONE	Obspar update status	NONE	UPDATED
Data mode	FAINT	FAINT	Number of optional ACIS chips dropped	0	0
Observation mode	POINTING	POINTING	On-chip summing requested	N	N
[deg] Pointing RA	176.842673	176.9142086395276	Subarray requested	CUSTOM	1/4
[deg] Pointing Dec	-67.894476	-67.89905842599481	Subarray start row	1	1
[deg] Pointing Roll	319.479782	319.7026517379688	Subarray row count	256	256
[mm] SIM focus pos	-0.684267	-0.6828225247311905	Alternating exposures requested	N	N
[mm] SIM defocus	0	0.001444936568705701	[s] Primary exposure time	0.000000	0.8
[mm] SIM translation stage pos	-178.632523	-178.6370735452349			
[mm] SIM translation stage offset	-11.5	-11.49544903777291			
[s] Observation start time (MET)	136041481.184000	136040498.22091			
Observation start date	2002-04-24T13:16:57	2002-04-24T13:01:38			
[s] Observation end time (MET)	136046181.184000	136046744.05867			
Observation end date	2002-04-24T14:35:17	2002-04-24T14:45:44			
Read mode	TIMED	TIMED			

2.3 Aspect



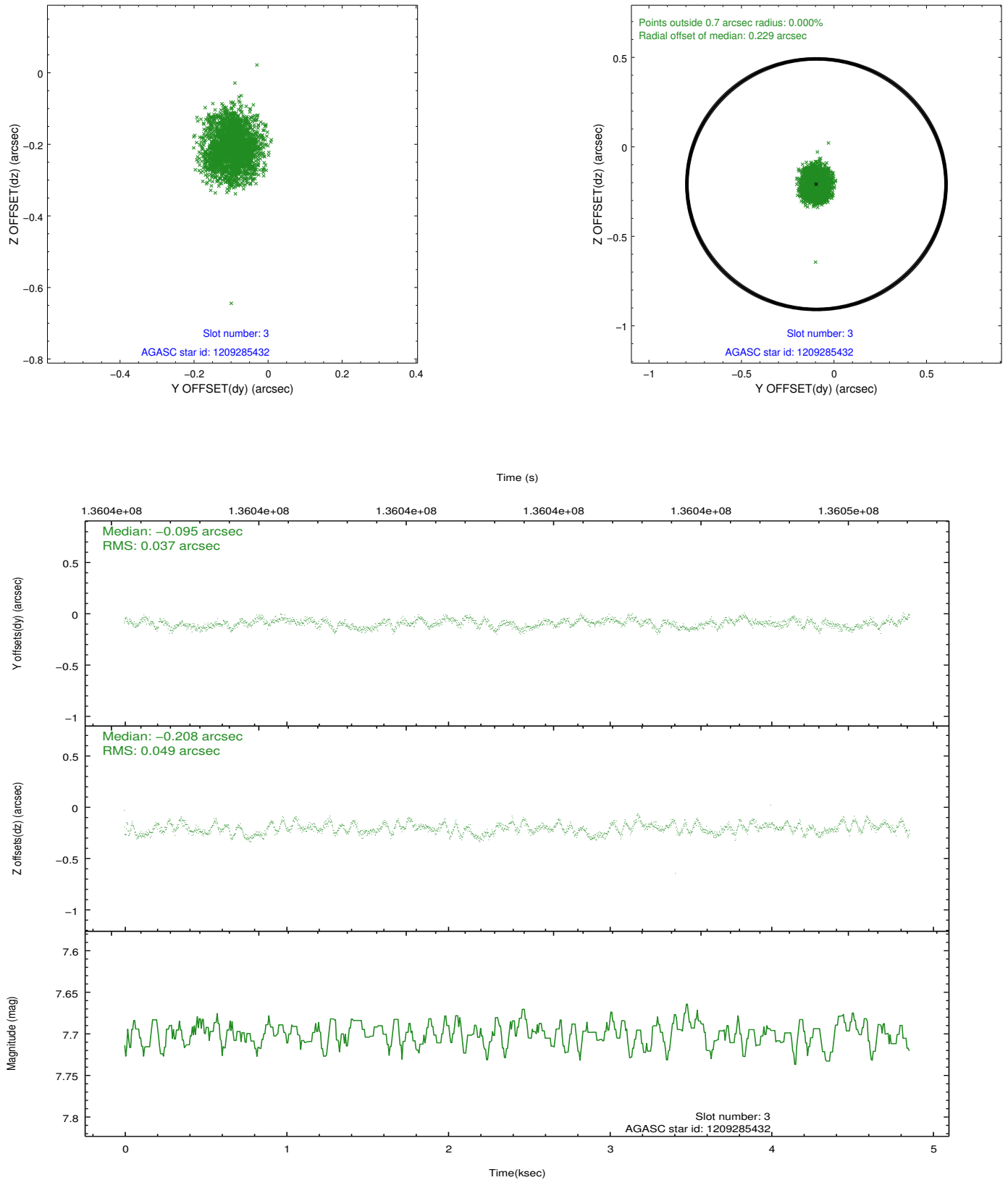


Slot Statistics

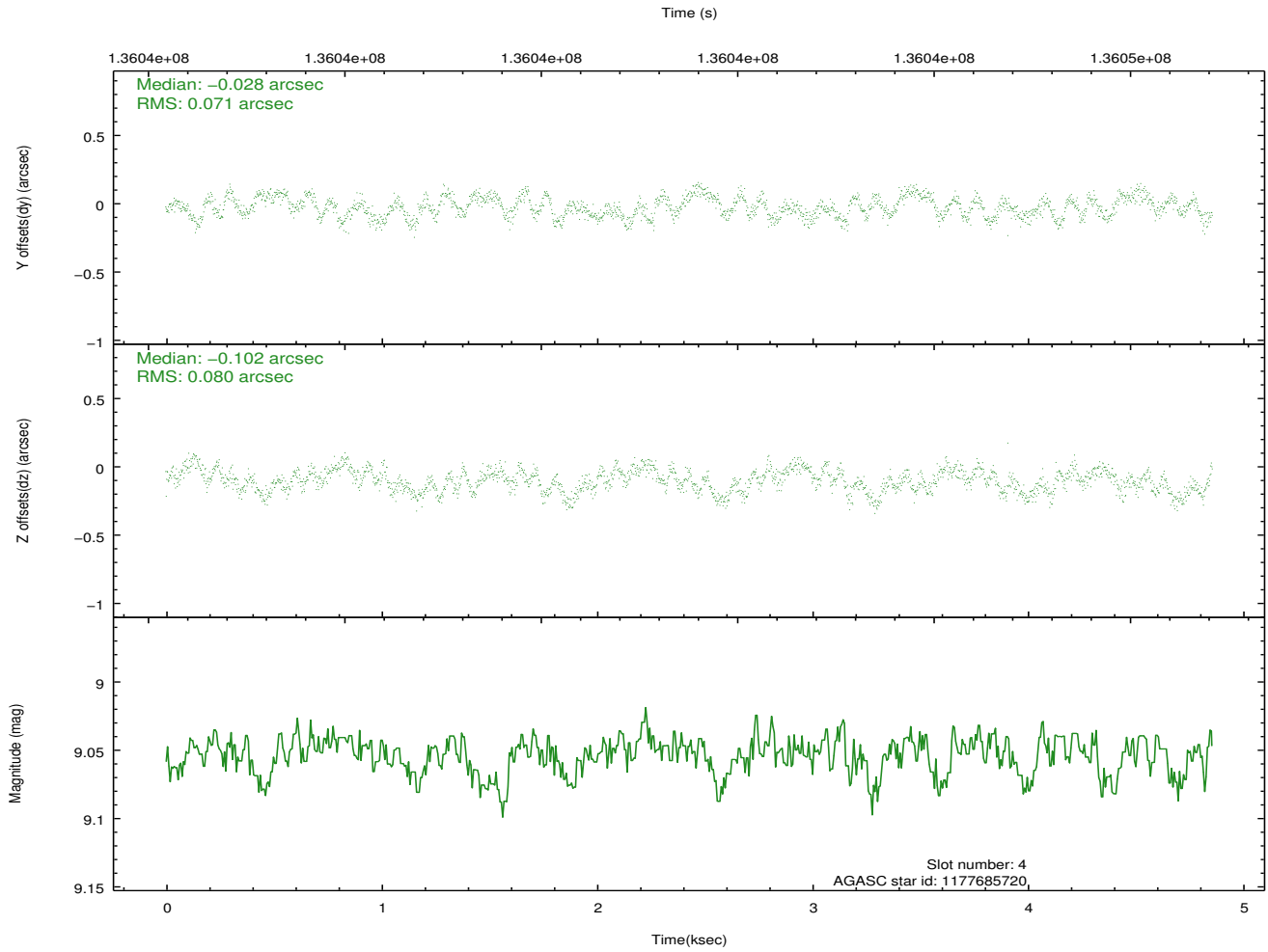
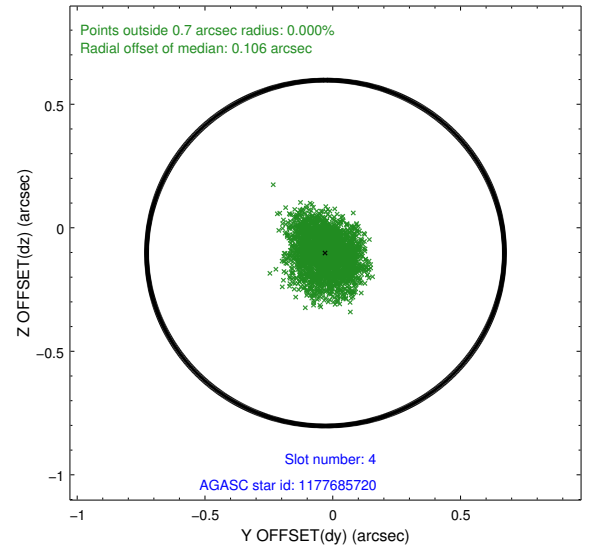
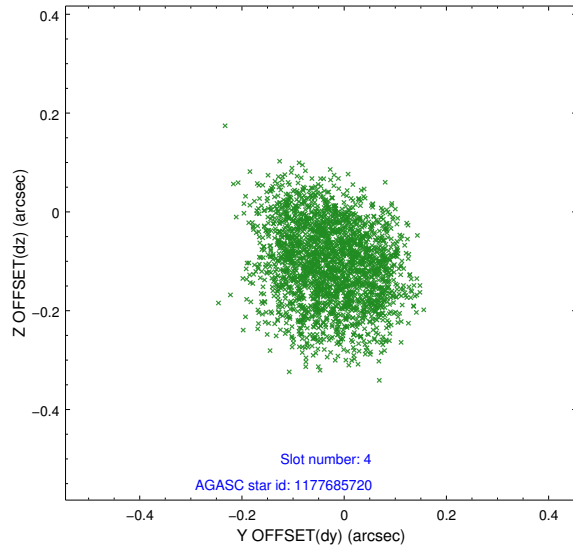
slot	status	id	mag	n_pts	med_dy	med_dz	dr1	dr2	ra	dec	mean_y	mean_z
0	FID	ACIS-S-2	7.08	1186	-0.080	-0.297	0.009	0.015	0.000000	0.000000	-754.46	-1965.78
1	FID	ACIS-S-4	7.17	1185	-0.010	0.118	0.008	0.016	0.000000	0.000000	2158.28	-58.34
2	FID	ACIS-S-5	7.23	1186	0.058	0.187	0.008	0.018	0.000000	0.000000	-1805.58	-63.25
3	GUIDE	1209285432	7.70	2371	-0.095	-0.208	0.066	0.102	178.433599	-67.646848	1095.21	2071.12
4	GUIDE	1177685720	9.05	2371	-0.028	-0.102	0.117	0.177	177.967818	-67.488575	239.68	2108.17
5	GUIDE	1209299440	8.80	2371	0.109	-0.001	0.097	0.150	177.314476	-68.699348	2354.57	-1802.74
6	GUIDE	1209300152	8.63	2371	-0.014	0.201	0.065	0.104	175.613442	-68.398110	-47.68	-2449.81
7	GUIDE	1209276472	9.19	2370	0.025	0.117	0.079	0.129	175.059490	-67.949219	-1680.12	-1743.28

2.4 Star Slots

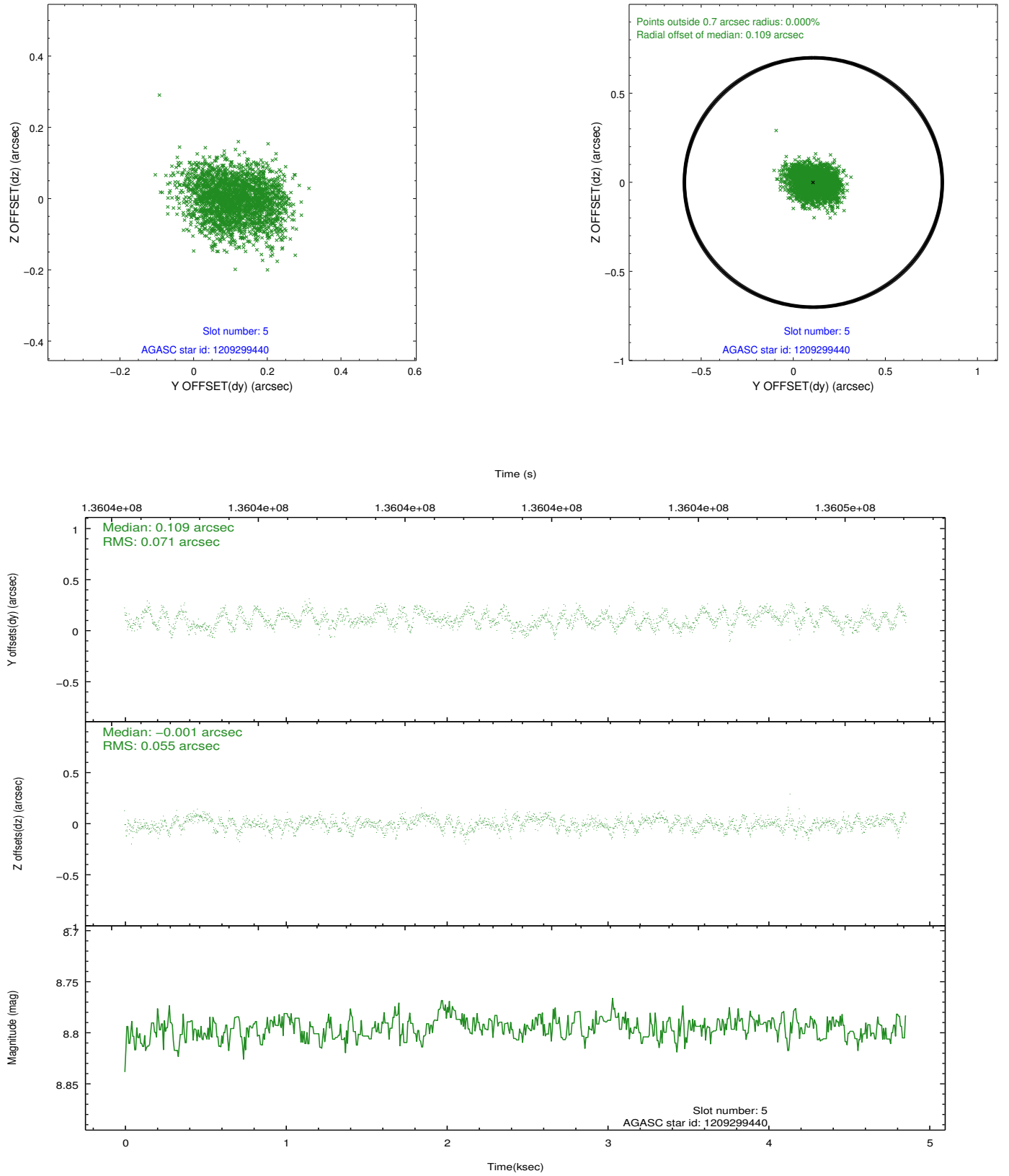
2.4.1 Slot 3



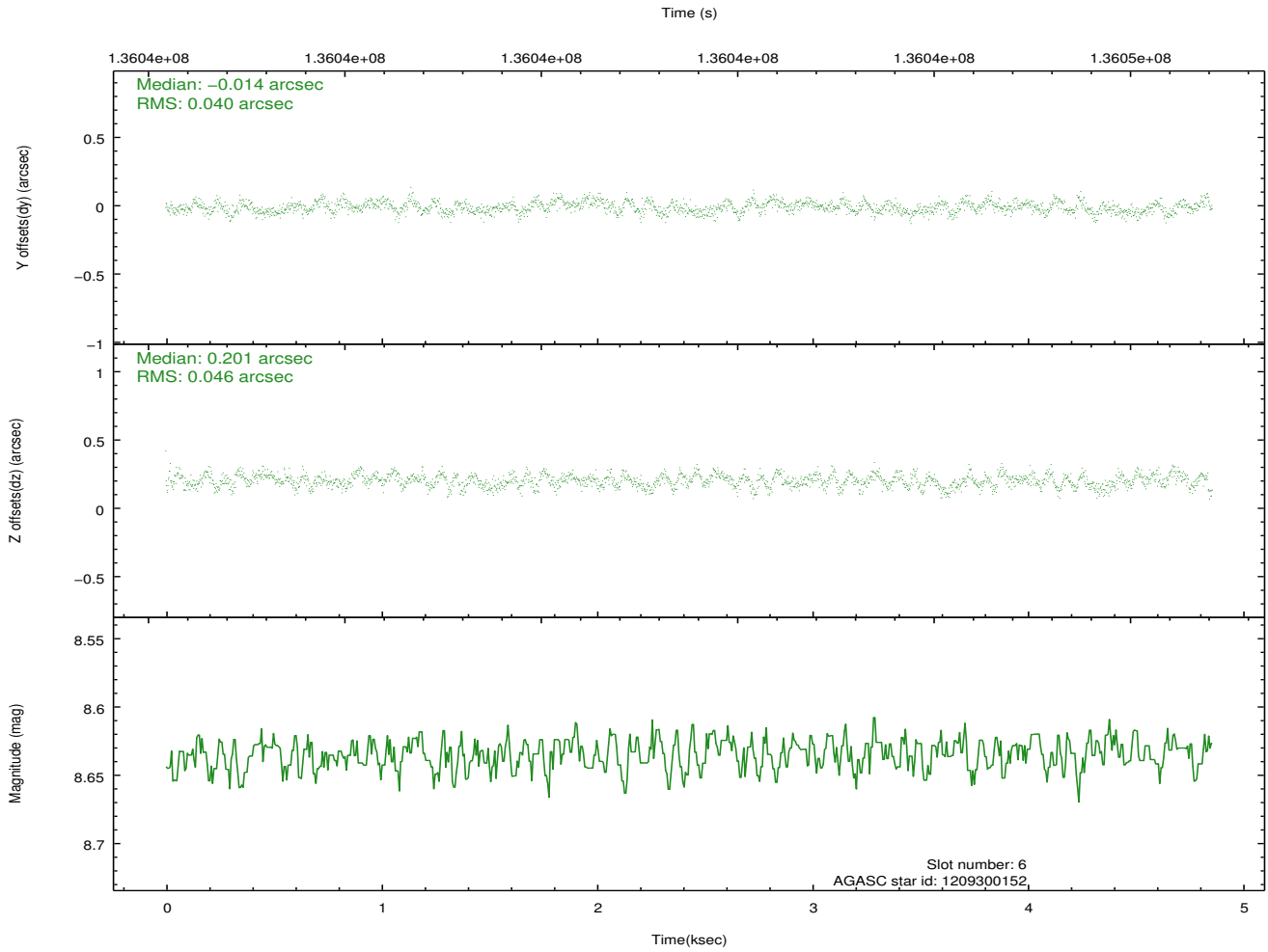
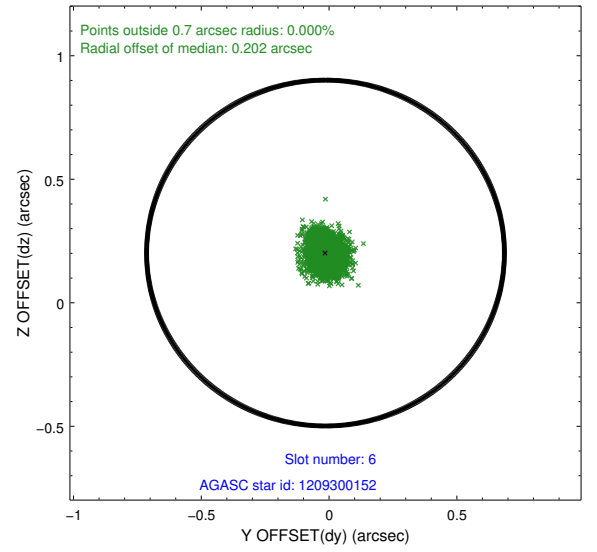
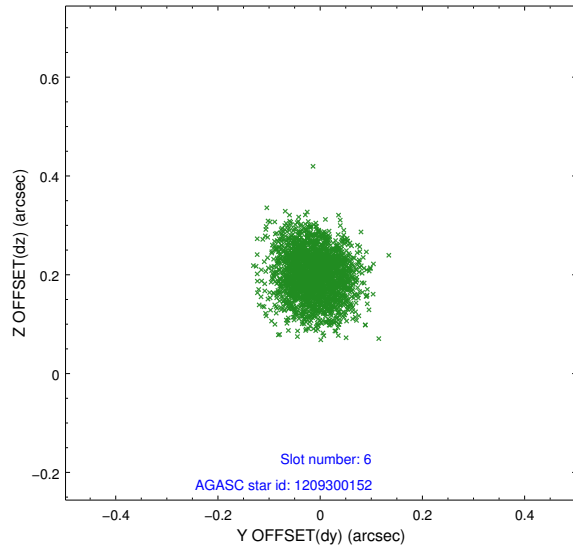
2.4.2 Slot 4



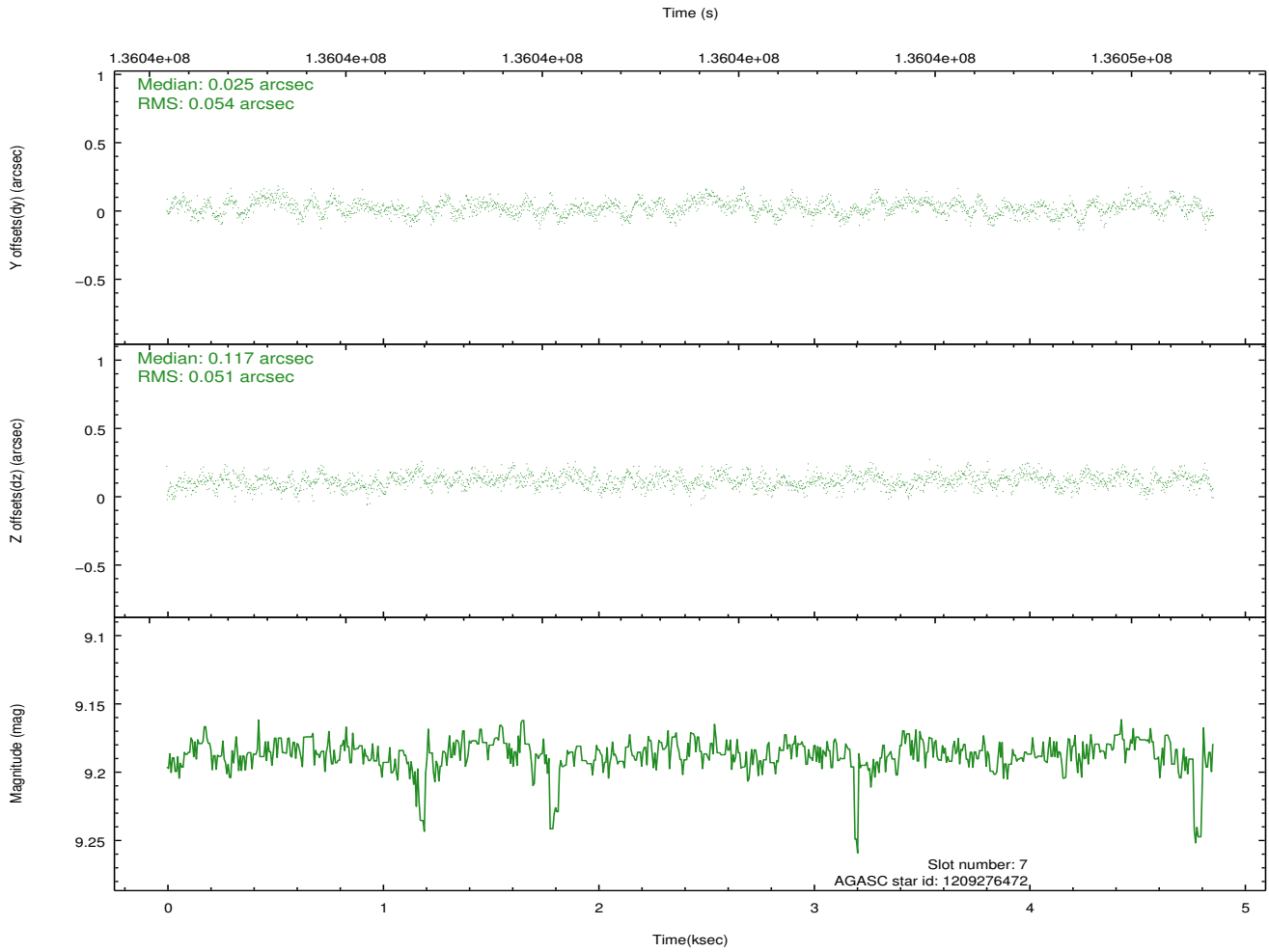
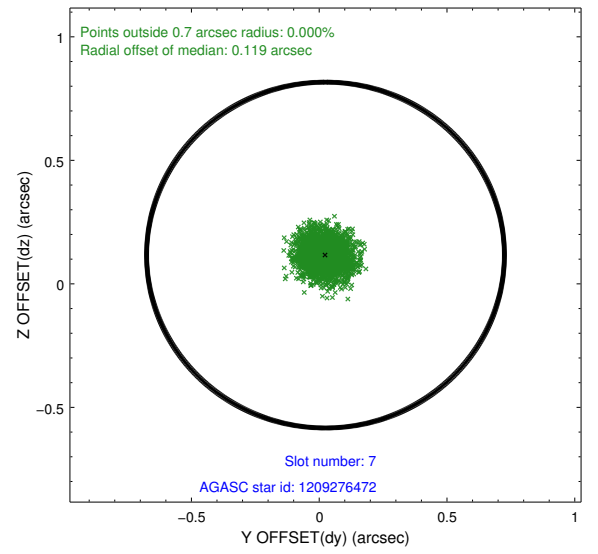
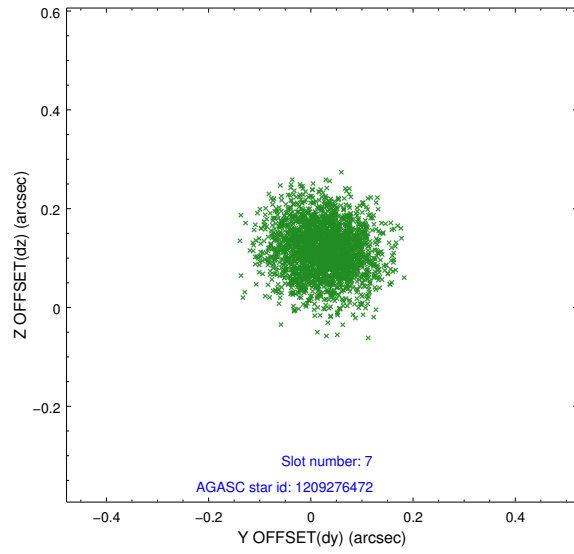
2.4.3 Slot 5



2.4.4 Slot 6

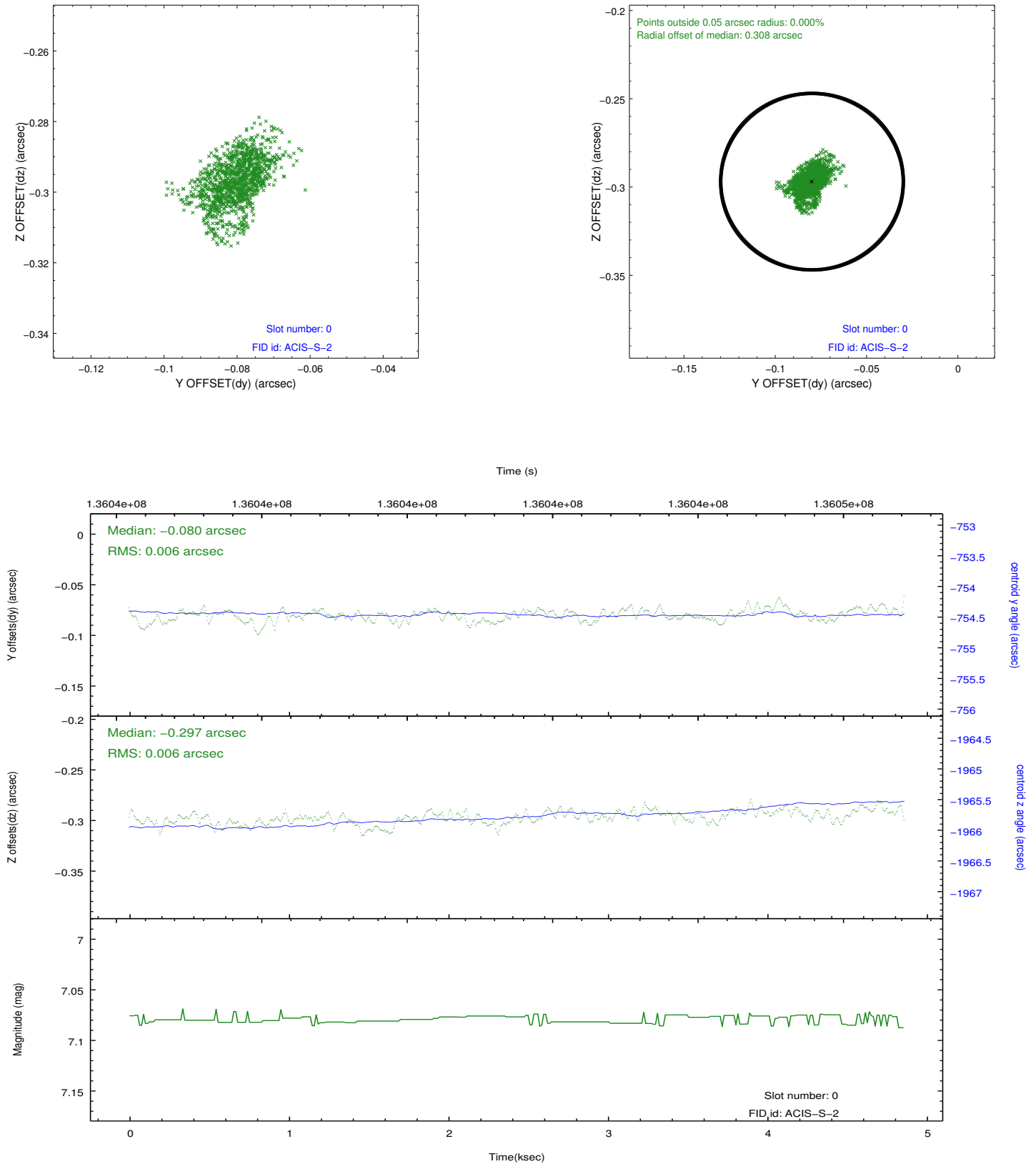


2.4.5 Slot 7

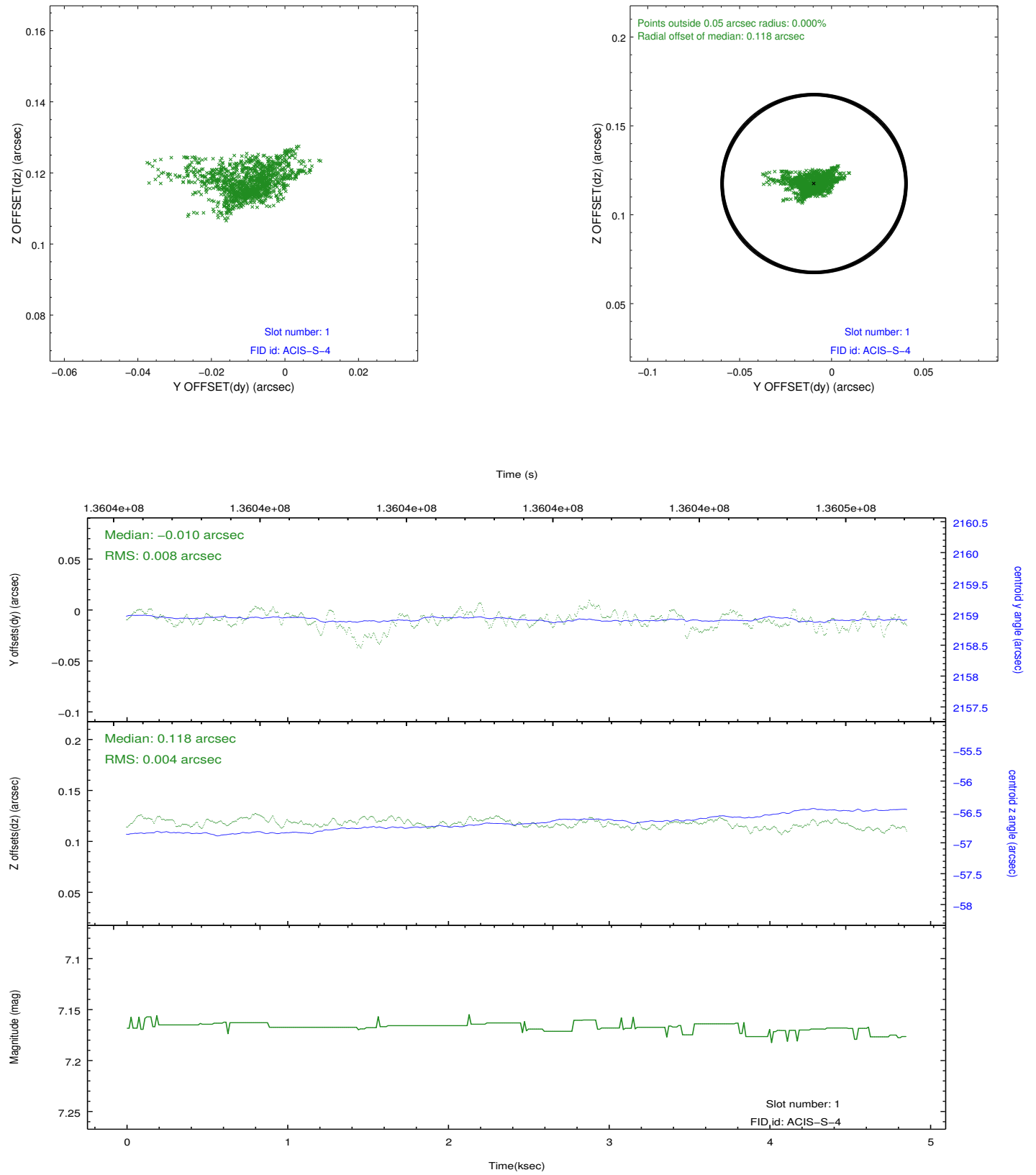


2.5 FID Slots

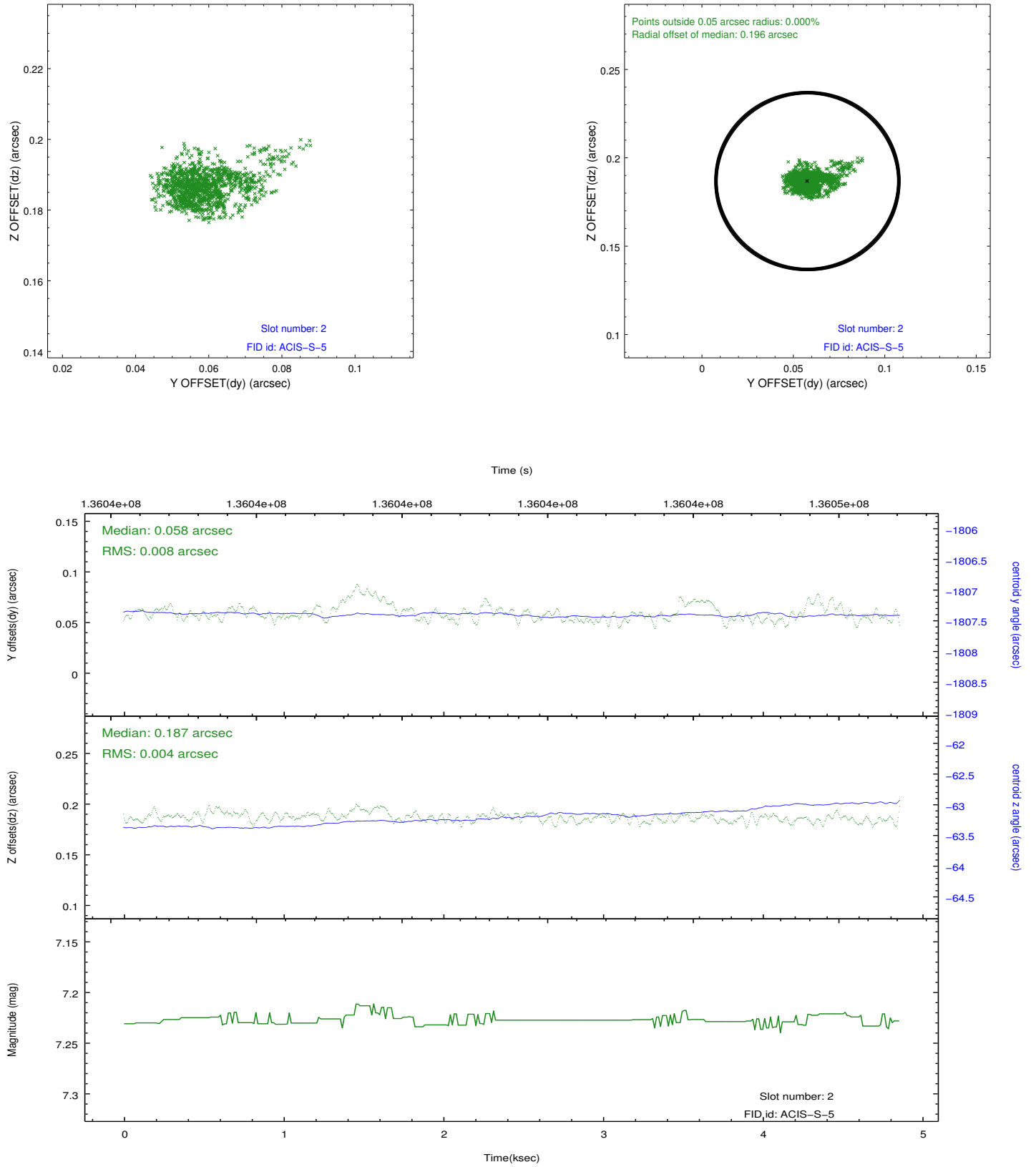
2.5.1 Slot 0



2.5.2 Slot 1



2.5.3 Slot 2



A Summary

A.1 Status

V&V Scientist	Beth Sundheim
V&V Date (YYYY-MM-DD)	2012.10.11
V&V Edition	1
V&V Disposition and Status	OK
V&V Charge Time	4.857

A.2 Comments