

V&V Reference Report

L2 ASCDS Version : 7.6.9

Observation 3077 - L2 Version 001
Chandra X-Ray Center

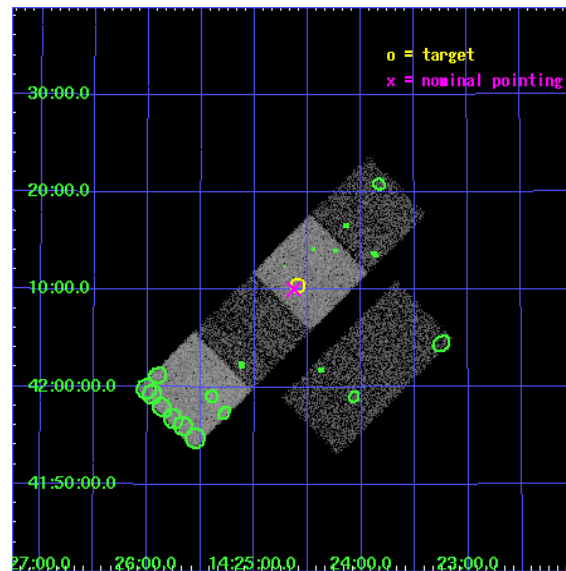
L2 Processing Date : Oct 4 2006

Contents

1	Front	2
2	OBI	3
2.1	OBI	3
2.1.1	Images	3
2.1.2	Bias	3
2.1.3	Parameters	4
2.1.4	Events	4
2.2	Compared Parameters	5
2.3	Aspect	6
2.4	Star Slots	9
2.4.1	Slot 3	9
2.4.2	Slot 4	10
2.4.3	Slot 5	11
2.4.4	Slot 6	12
2.4.5	Slot 7	13
2.5	FID Slots	14
2.5.1	Slot 0	14
2.5.2	Slot 1	15
2.5.3	Slot 2	16
3	Point Sources	17
A	Summary	18
A.1	Status	18
A.2	Comments	18

1 Front

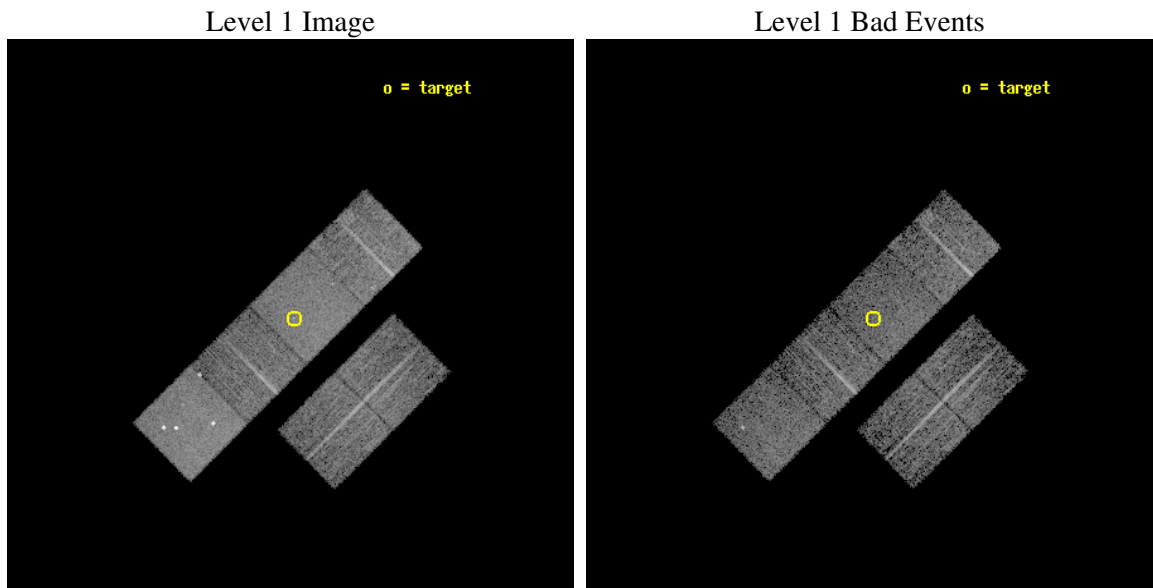
seq_num	700516
obs_id	3077
title	X-RAY WEAK BROAD-LINE QUASARS: ABSORPTION OR INTRINSIC X_RAY WEAKNESS ?
observer	Dr Guido Risaliti
object	HS 1422+4224
dtcycle	0
cycle	P
ra_targ	216.15
dec_targ	42.175167
ra_nom	216.15749483675
dec_nom	42.167342369107
roll_nom	315.15622854463
revision	2
ontime	5958.3999778032
livetime	5882.9511295666
ontime2	5958.3999778032
ontime3	5958.3999778032
ontime5	5958.3999778032
ontime6	5958.3999778032
ontime7	5958.3999778032
ontime8	5958.3999778032
l2events	56429



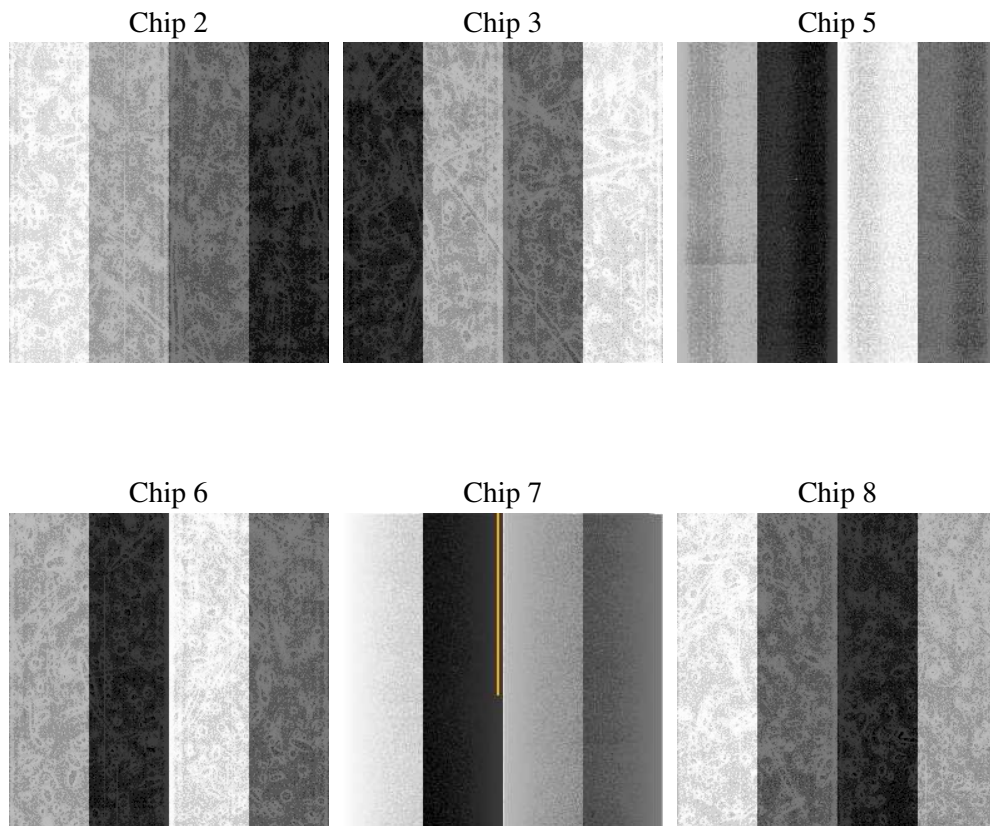
2 OBI

2.1 OBI

2.1.1 Images



2.1.2 Bias



2.1.3 Parameters

obi_num	0
ascdsver	7.6.9
caldbver	3.2.3
date	2006-10-04T18:08:35
revision	2

sched_exp_time	6000.000000
ontime	5963.4378470182
ontime2	5963.4378470182
ontime3	5966.6788570881
ontime5	5966.6788570881
ontime6	5966.6788570881
ontime7	5963.4378470182
ontime8	5966.6788371801
l1events	263597

2.1.4 Events

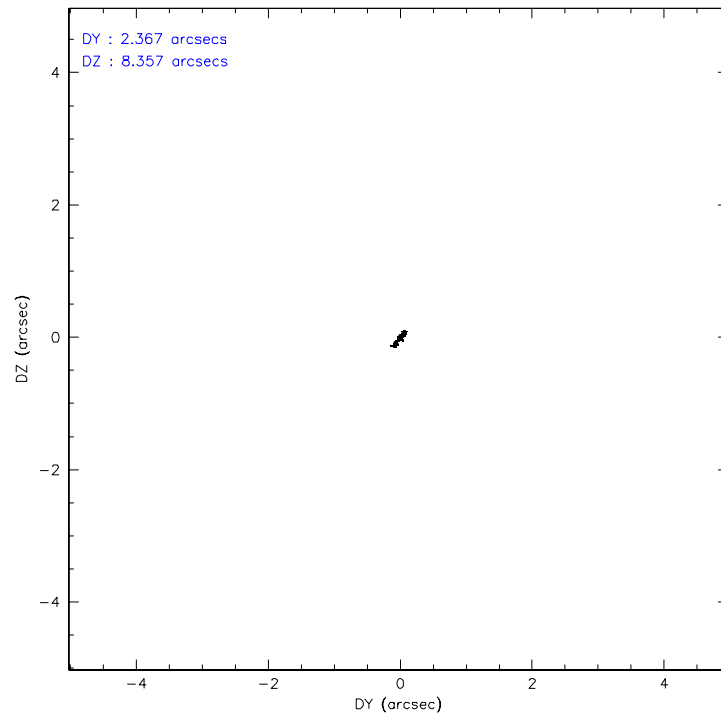
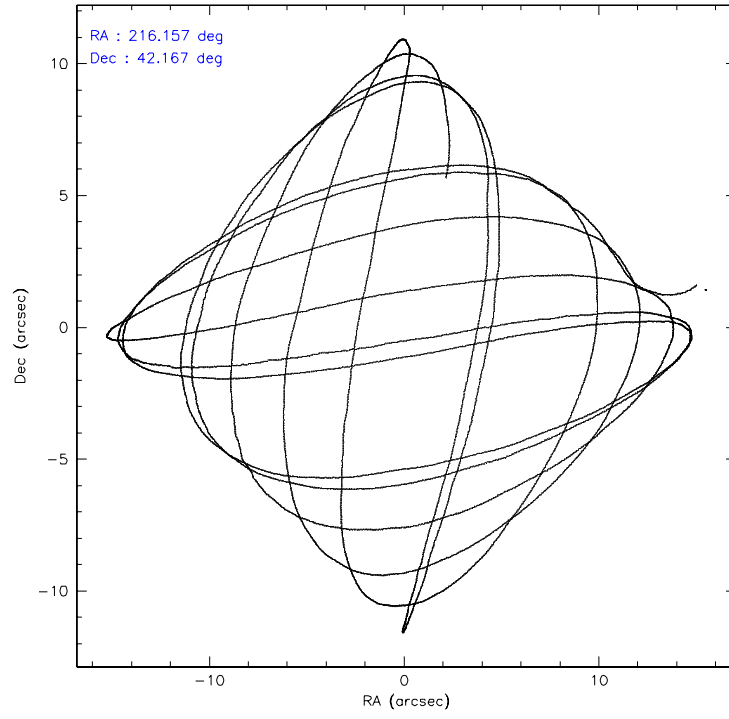
	ccd 2	ccd 3	ccd 5	ccd 6	ccd 7	ccd 8
level 1 events	35909	35443	58523	36752	49508	47462
rejected events	31615	31362	30702	32349	30419	37939
rejected %	88%	88%	52%	88%	61%	79%

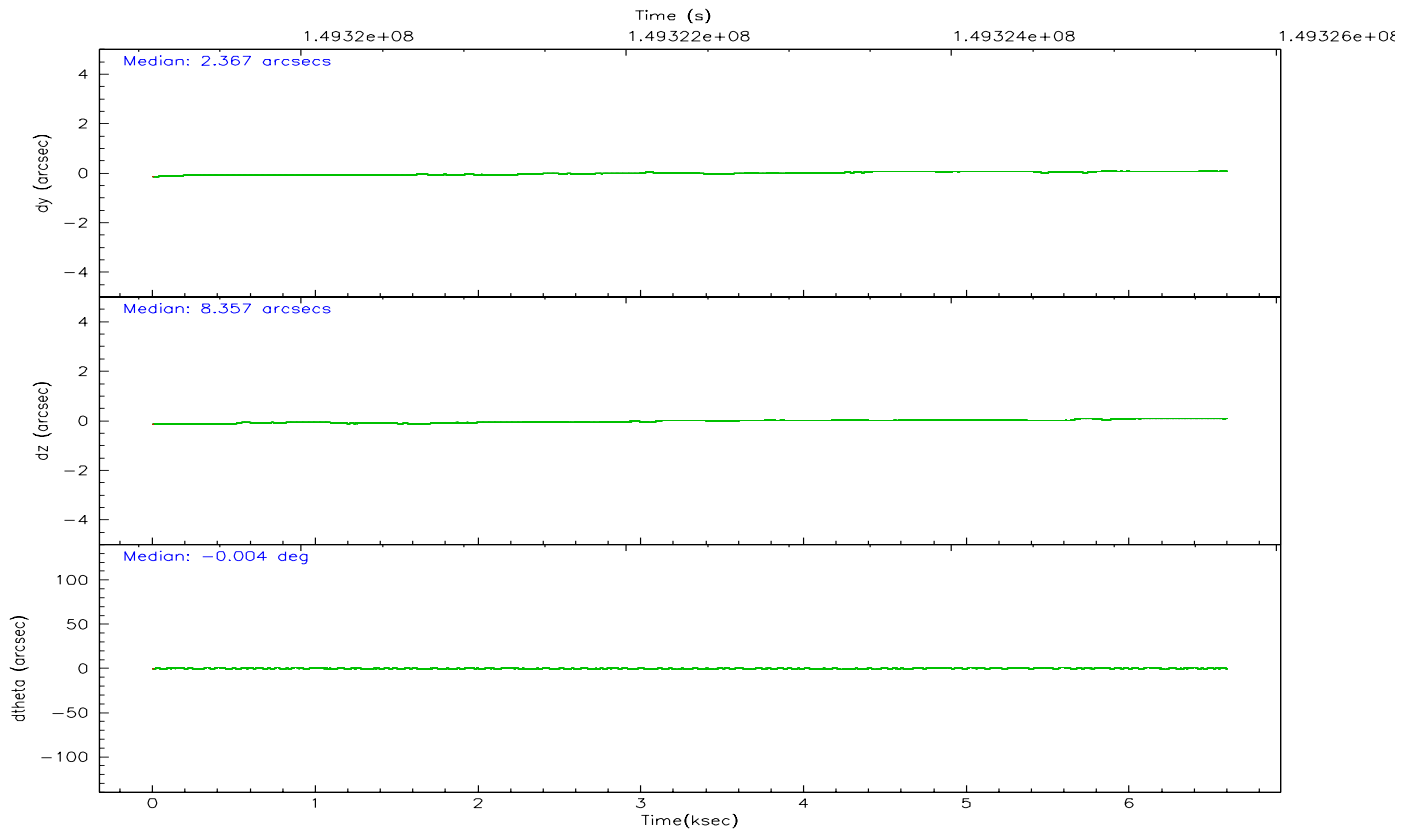
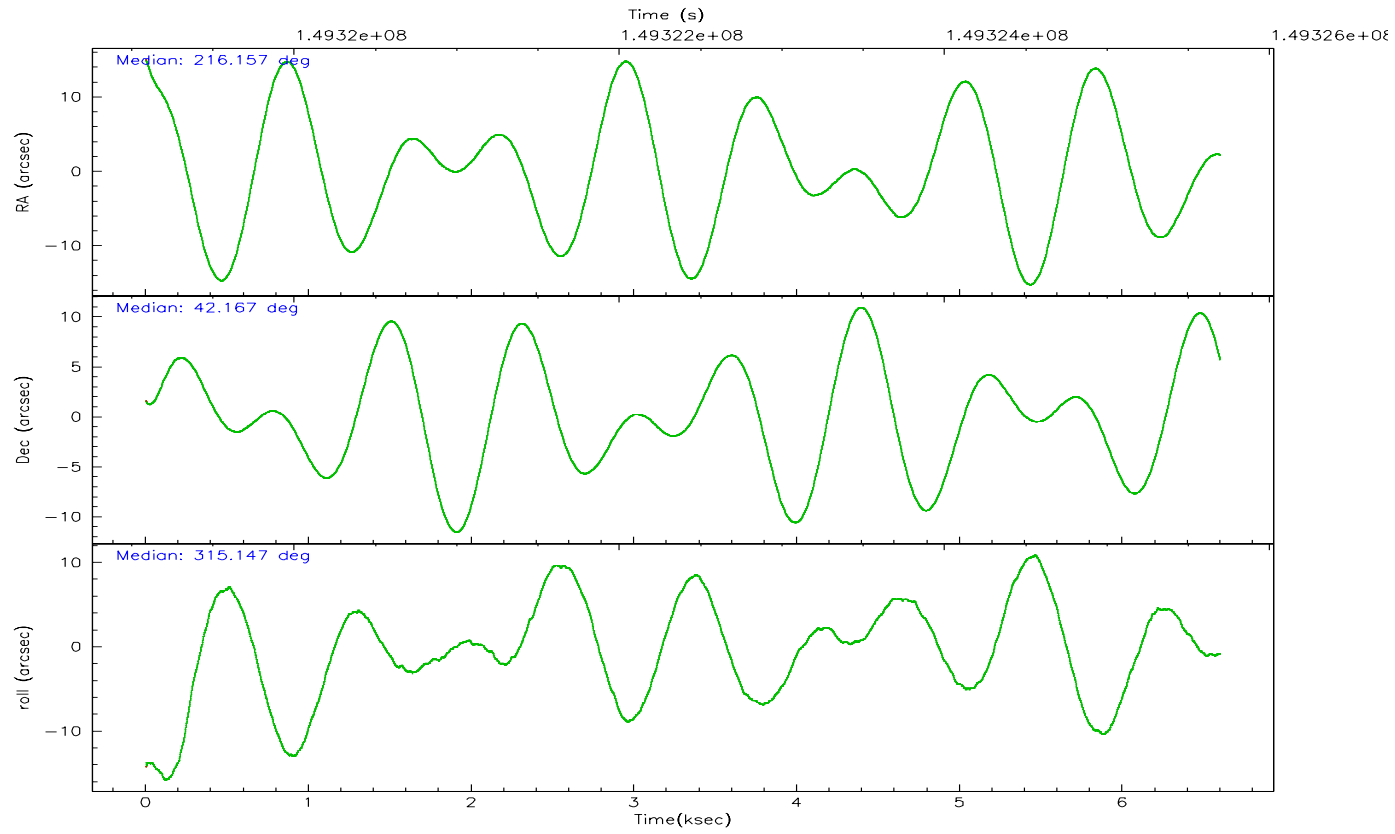
	ccd 2	ccd 3	ccd 5	ccd 6	ccd 7	ccd 8
grade 0 events	1923	1786	5488	1830	1333	3006
	5%	5%	9%	4%	2%	6%
grade 1 events	23	36	361	17	26	39
	0%	0%	0%	0%	0%	0%
grade 2 events	807	746	7720	866	4677	2075
	2%	2%	13%	2%	9%	4%
grade 3 events	424	436	570	476	1002	1012
	1%	1%	0%	1%	2%	2%
grade 4 events	428	448	522	392	1001	956
	1%	1%	0%	1%	2%	2%
grade 5 events	1353	1556	2623	1605	3288	2193
	3%	4%	4%	4%	6%	4%
grade 6 events	714	669	13548	846	11080	2519
	1%	1%	23%	2%	22%	5%
grade 7 events	30237	29766	27691	30720	27101	35662
	84%	83%	47%	83%	54%	75%

2.2 Compared Parameters

Parameter	Planned	Actual	Parameter	Planned	Actual
Instrument	ACIS	ACIS	Obspar format version number	6	6
Detector	ACIS-235678	ACIS-235678	Obspar file type	PREDICTED	ACTUAL
Grating	NONE	NONE	Obspar update status	NONE	UPDATED
Data mode	FAINT	FAINT	Number of optional ACIS chips dropped	0	0
Observation mode	POINTING	POINTING	On-chip summing requested	N	N
Pointing RA	216.121855	216.1574948367466	Subarray requested	NONE	NONE
Pointing Dec	42.173861	42.16734236910712	Alternating exposures requested	N	N
Pointing Roll	315.023530	315.1562285446325	Primary exposure time	0.000000	3.2
SIM focus pos (mm)	-0.684267	-0.6828225247311905			
SIM defocus (mm)	0	0.001444936568705701			
SIM translation stage pos (mm)	-190.132523	-190.1400660498719			
SIM translation stage offset (mm)	0	0.00754346686406393			
Observation start time	149319691.184000	149318528.65334			
Observation start date	2002-09-25T05:40:27	2002-09-25T05:22:08			
Observation end time	149325691.184000	149326293.02866			
Observation end date	2002-09-25T07:20:27	2002-09-25T07:31:33			
Read mode	TIMED	TIMED			

2.3 Aspect



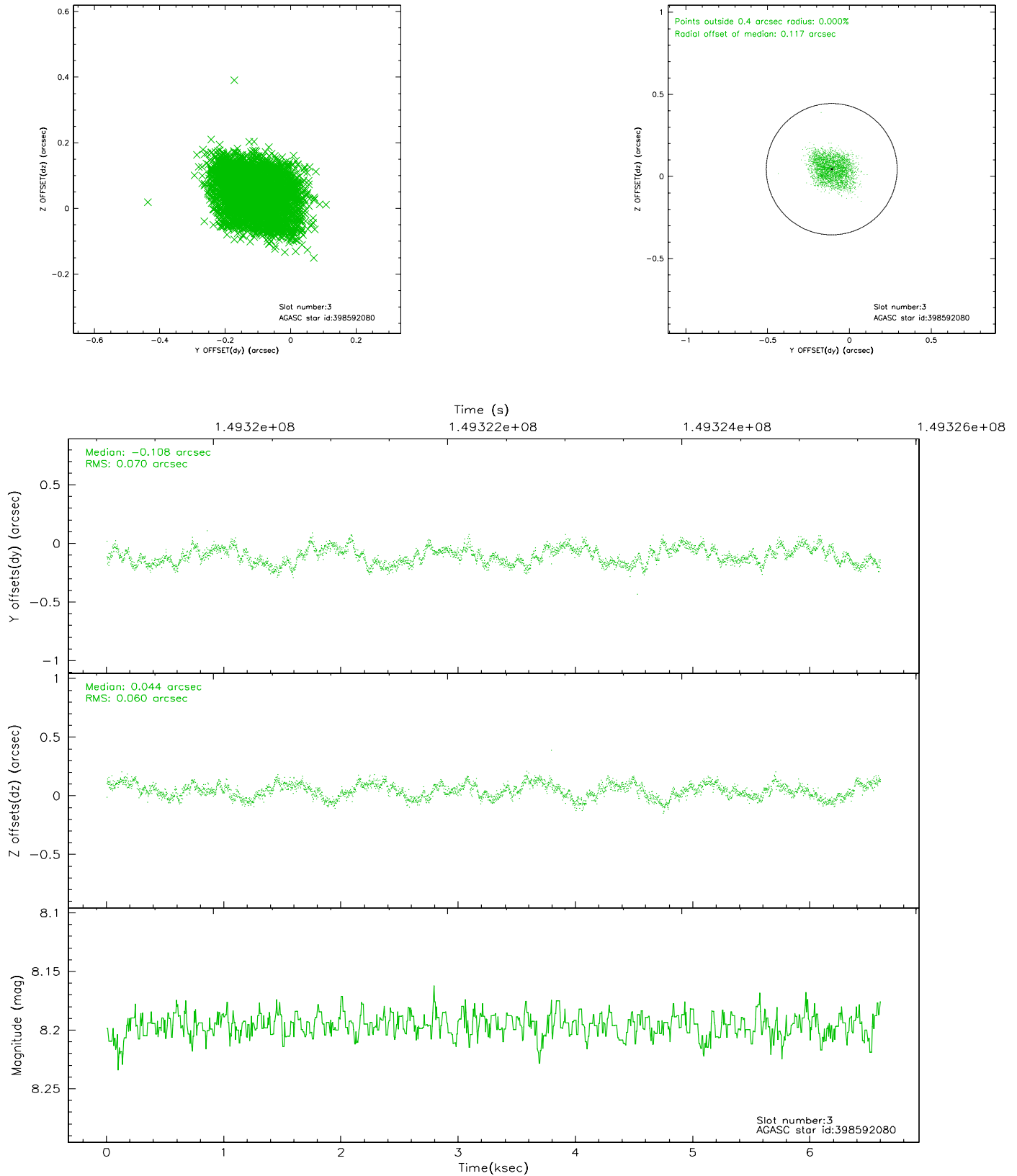


Slot Statistics

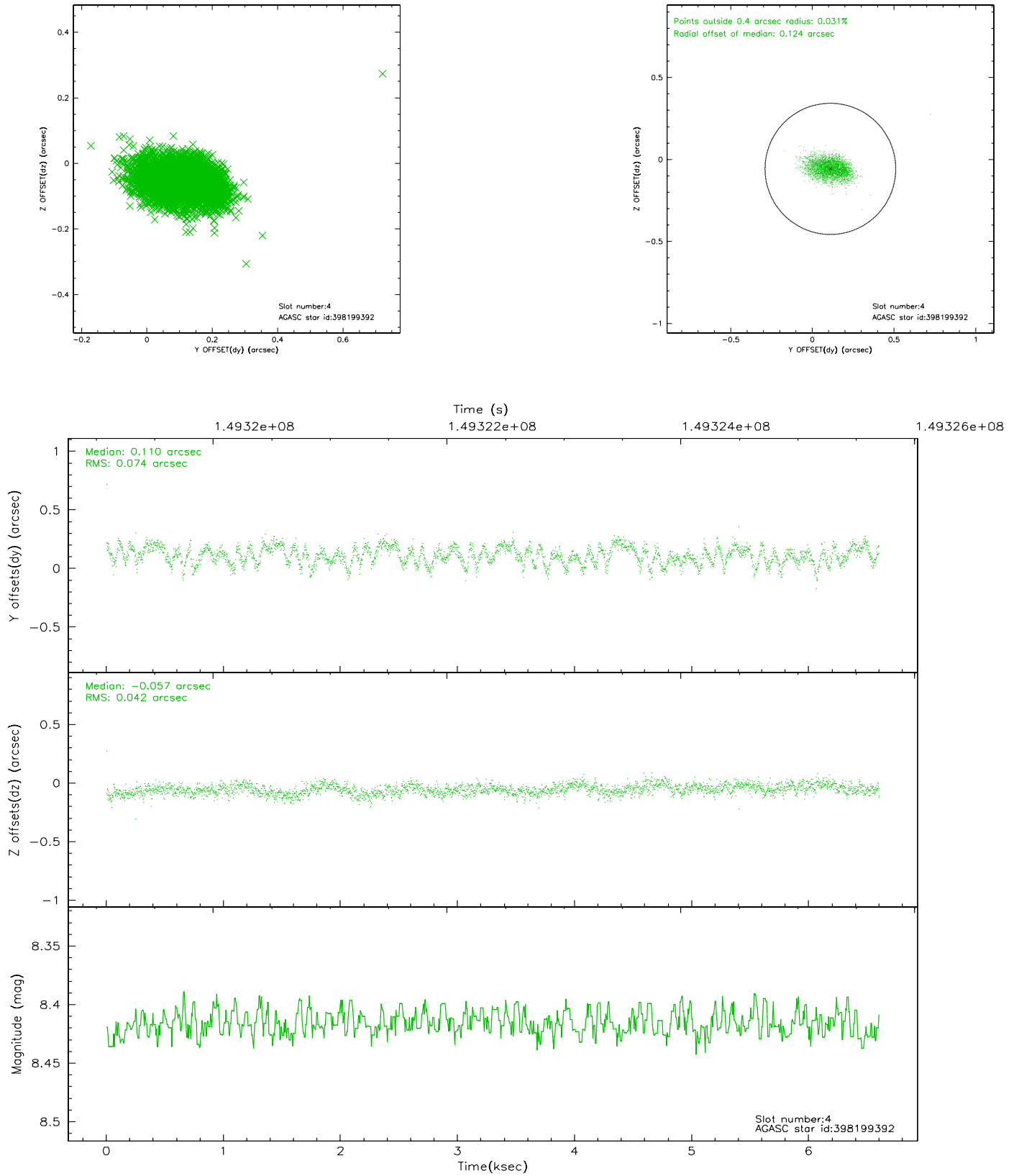
slot	status	id	mag	n_pts	med_dy	med_dz	dr1	dr2	ra	dec	mean_y	mean_z
0	FID	ACIS-S-2	7.11	1610	-0.008	0.012	0.012	0.021	0.000000	0.000000	-755.01	-1729.52
1	FID	ACIS-S-4	7.20	1610	-0.056	0.001	0.013	0.031	0.000000	0.000000	2157.83	178.01
2	FID	ACIS-S-5	7.24	1610	0.035	-0.005	0.011	0.020	0.000000	0.000000	-1806.65	172.72
3	GUIDE	398592080	8.20	3220	-0.108	0.044	0.100	0.150	216.056075	42.661607	-1363.64	1119.15
4	GUIDE	398199392	8.42	3219	0.110	-0.057	0.089	0.145	216.203912	41.275106	2445.20	-2131.61
5	GUIDE	398199408	8.97	3217	-0.054	-0.069	0.070	0.113	216.068323	41.729041	1032.09	-1234.69
6	GUIDE	398329080	9.09	3218	0.030	-0.013	0.084	0.132	216.904044	41.848754	2305.62	661.76
7	GUIDE	398201208	8.94	3215	0.023	0.098	0.083	0.133	216.509925	42.218085	619.40	846.30

2.4 Star Slots

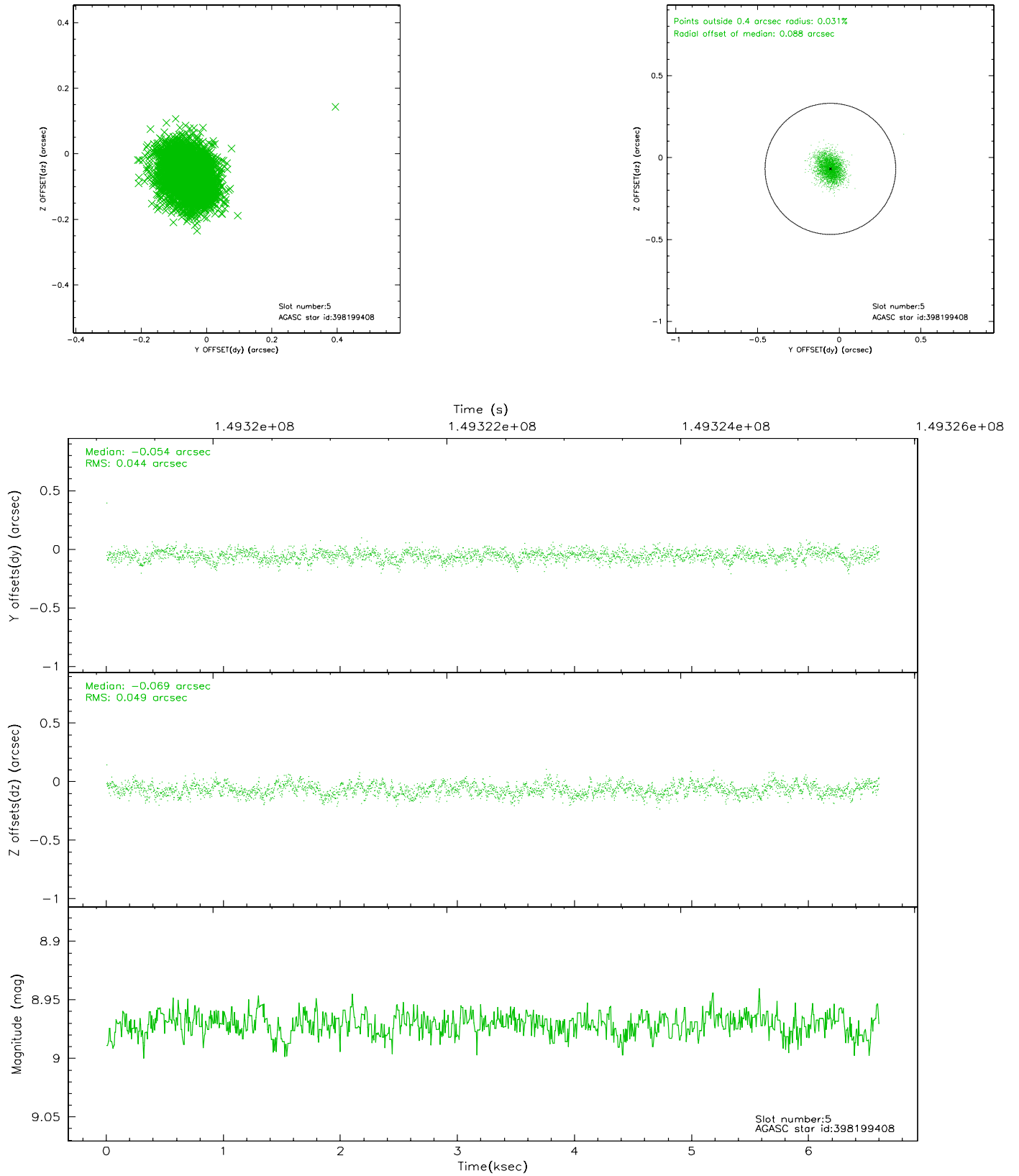
2.4.1 Slot 3



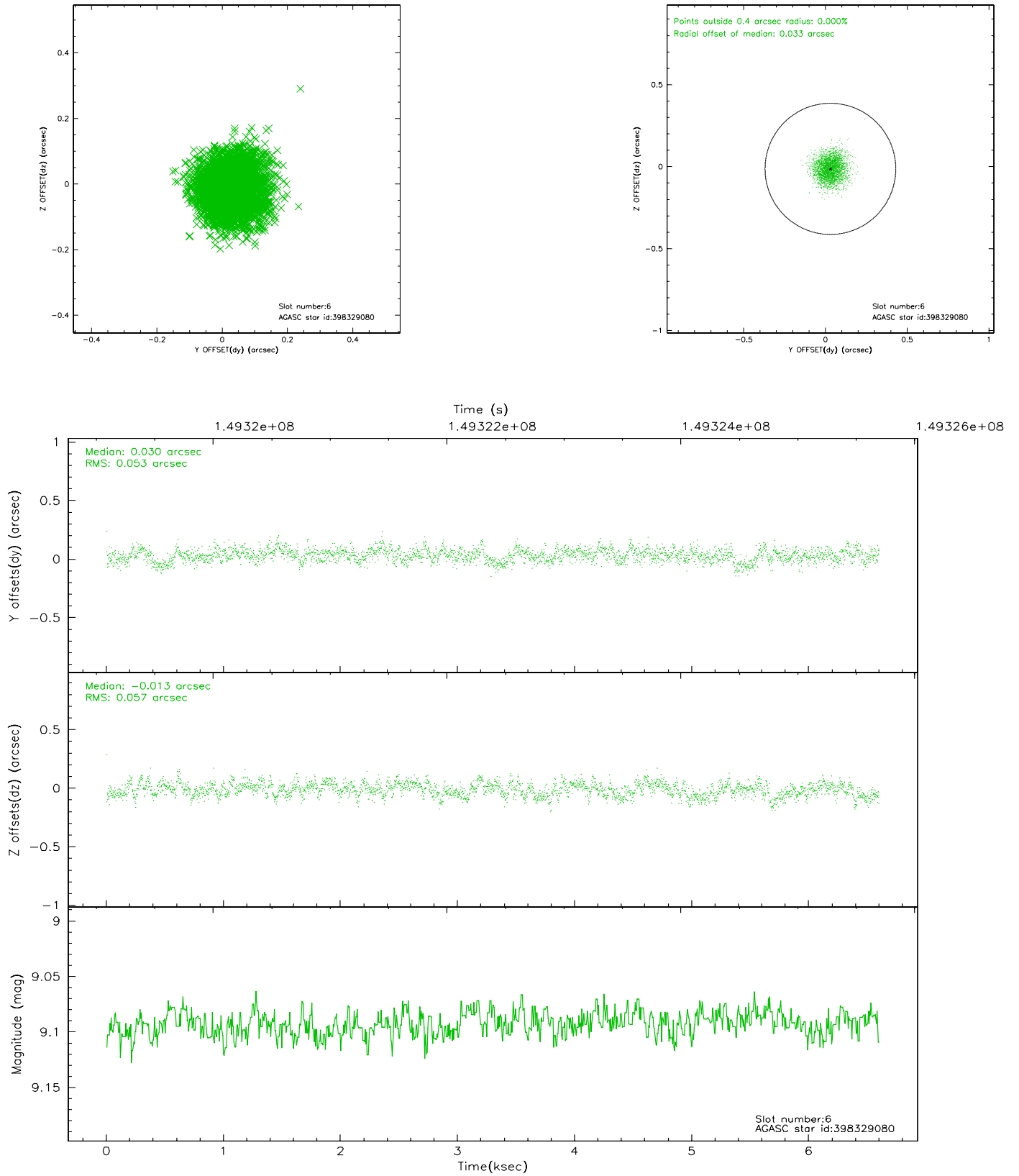
2.4.2 Slot 4



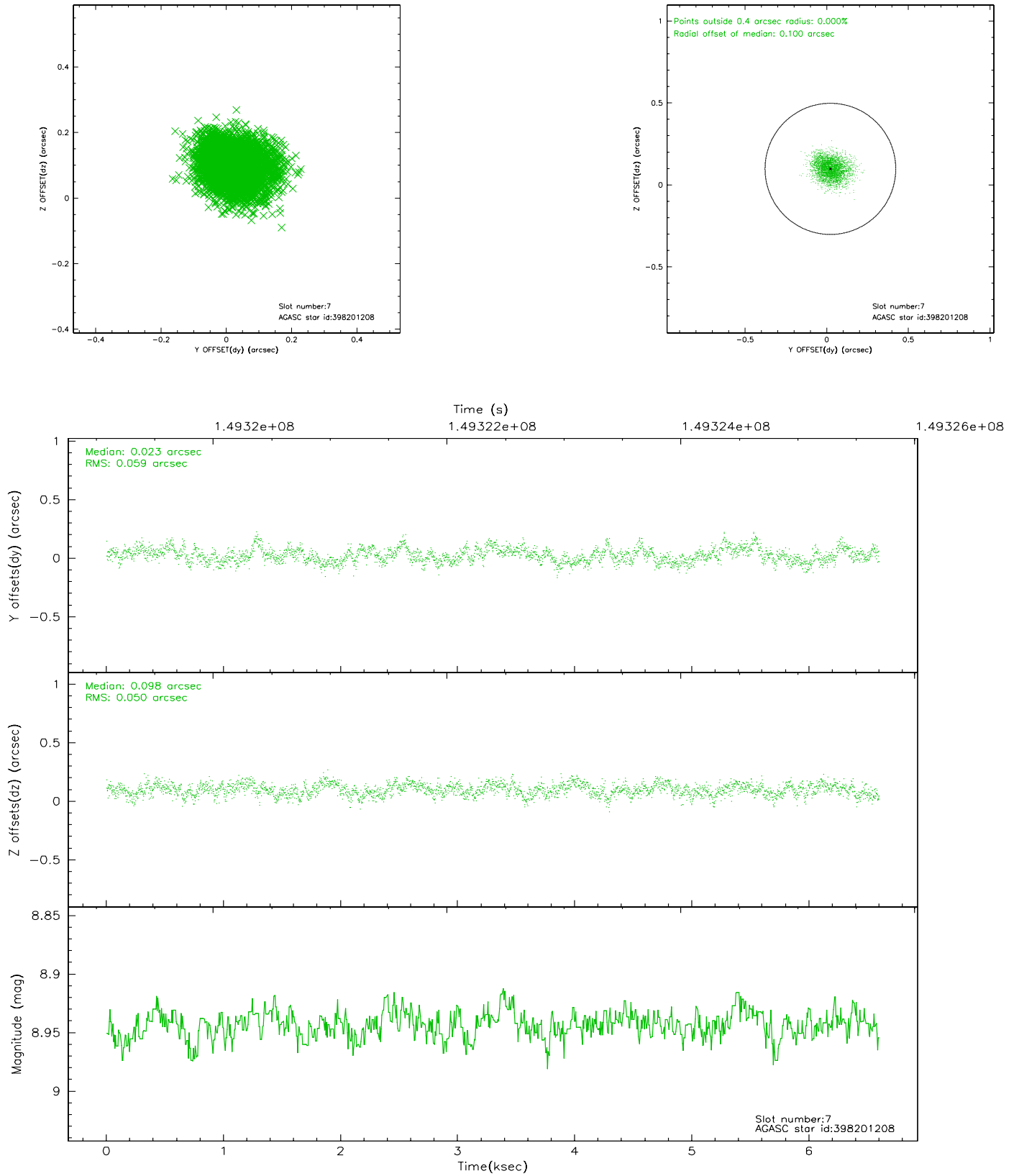
2.4.3 Slot 5



2.4.4 Slot 6

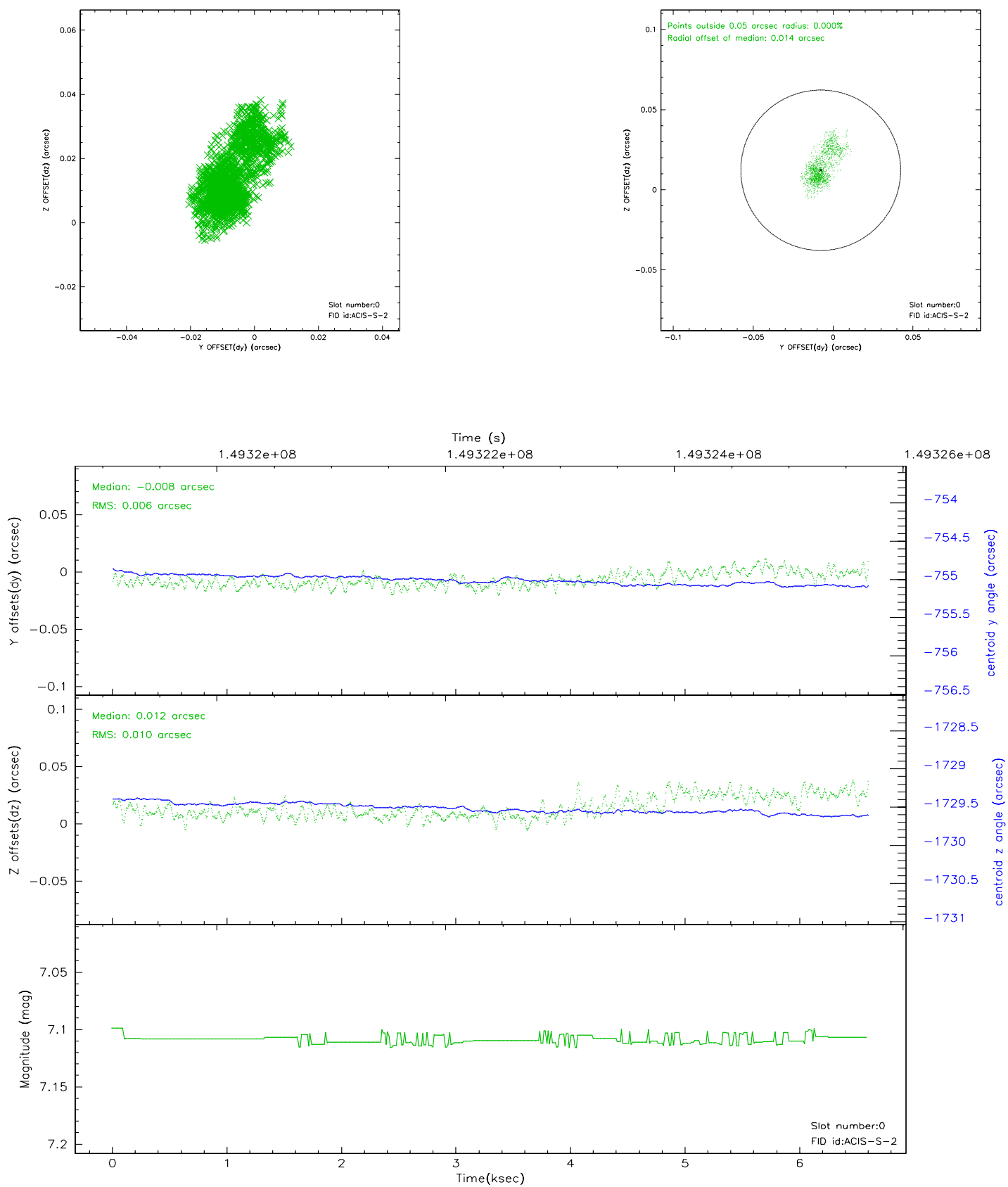


2.4.5 Slot 7

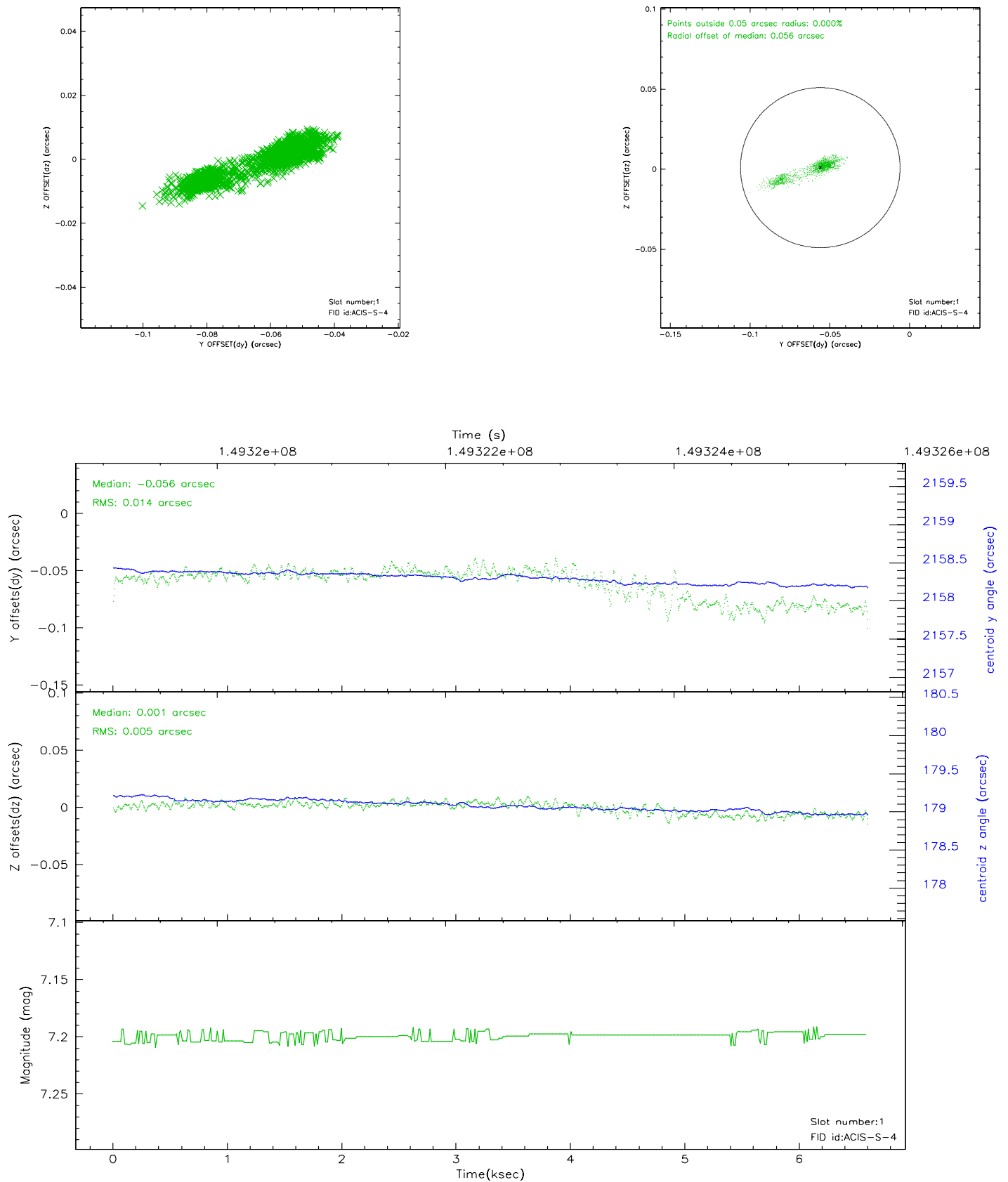


2.5 FID Slots

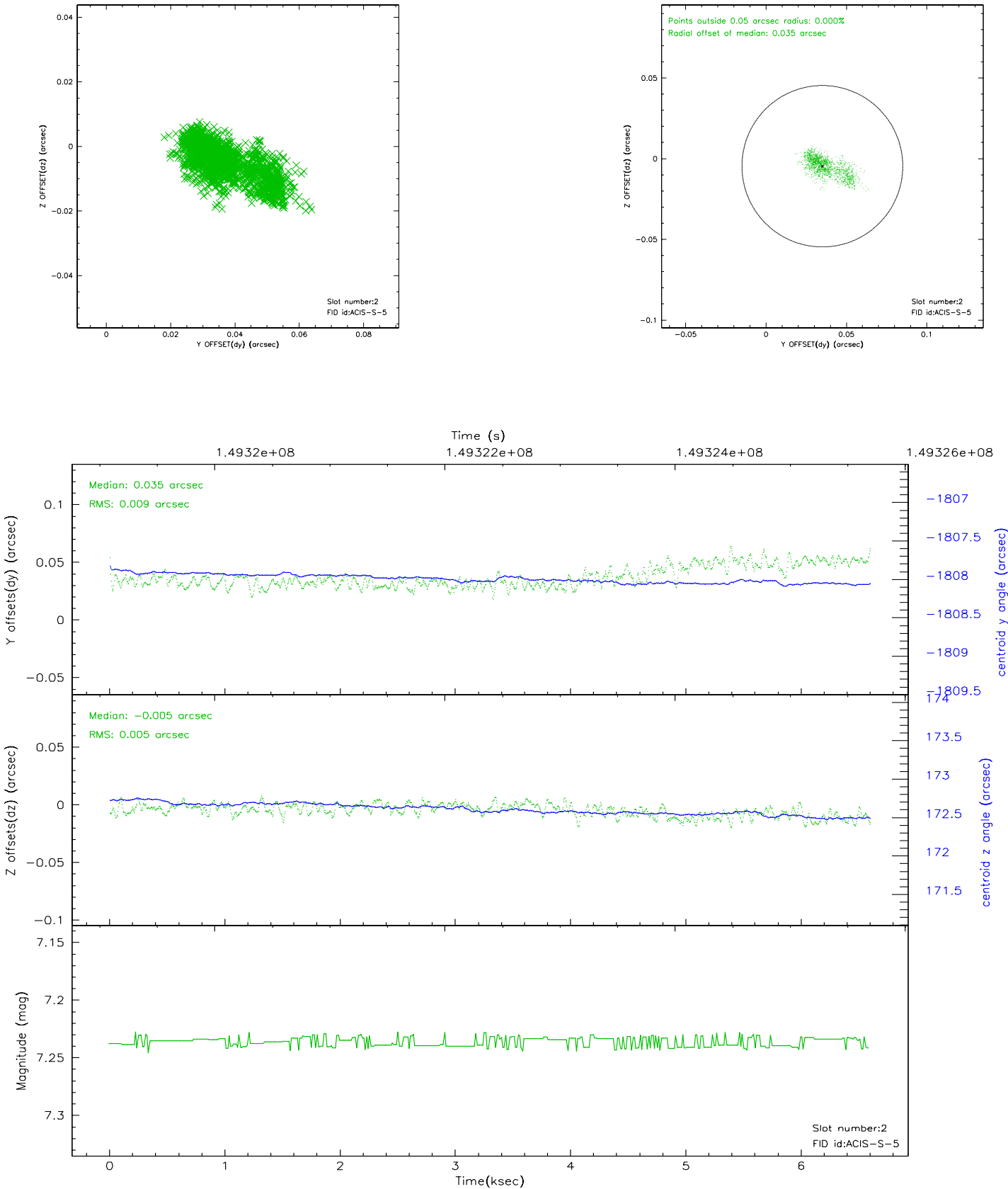
2.5.1 Slot 0



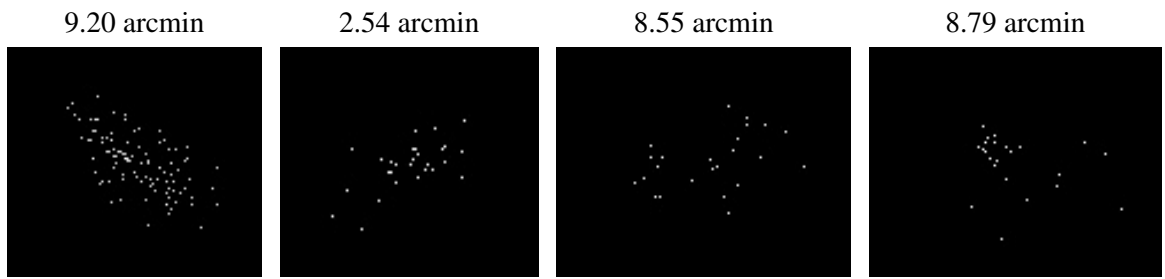
2.5.2 Slot 1



2.5.3 Slot 2



3 Point Sources



A Summary

A.1 Status

V&V Scientist	Beth Sundheim
V&V Date (YYYY-MM-DD)	2006.10.04
V&V Edition	1
V&V Disposition and Status	OK
V&V Charge Time	5.958

A.2 Comments