

V&V Reference Report

L2 ASCDS Version : 7.6.9

Observation 3027 - L2 Version 001
Chandra X-Ray Center

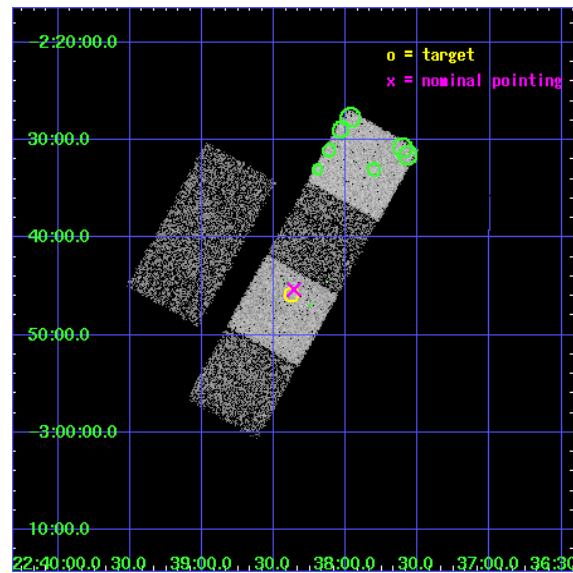
L2 Processing Date : Sep 20 2006

Contents

1	Front	2
2	OBI	3
2.1	OBI	3
2.1.1	Images	3
2.1.2	Bias	3
2.1.3	Parameters	4
2.1.4	Events	4
2.2	Compared Parameters	5
2.3	Aspect	6
2.4	Star Slots	9
2.4.1	Slot 3	9
2.4.2	Slot 4	10
2.4.3	Slot 5	11
2.4.4	Slot 6	12
2.4.5	Slot 7	13
2.5	FID Slots	14
2.5.1	Slot 0	14
2.5.2	Slot 1	15
2.5.3	Slot 2	16
3	Point Sources	17
A	Summary	18
A.1	Status	18
A.2	Comments	18

1 Front

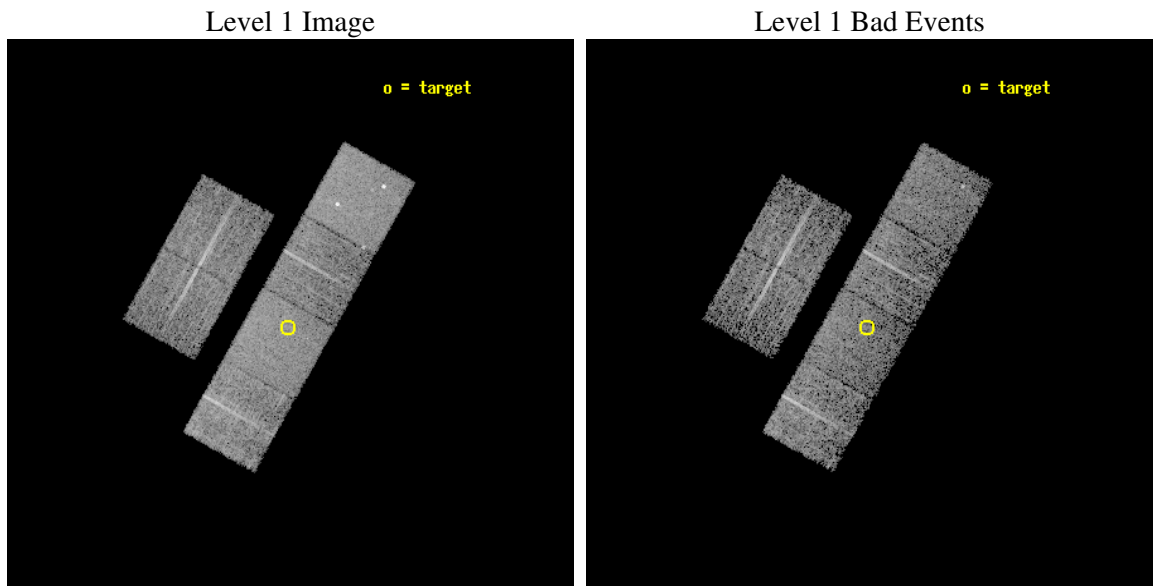
seq_num	700466
obs_id	3027
title	A SYSTEMATIC X-RAY SURVEY OF SUBMILLIMETRE-LUMINOUS QUASARS
observer	Dr Robert Priddey
object	BRI2235-0301
dtcycle	0
cycle	P
ra_targ	339.59375
dec_targ	-2.76475
ra_nom	339.5904638804
dec_nom	-2.7555702805809
roll_nom	119.29309941689
revision	2
ontime	4959.9999815226
livetime	4897.1934752031
ontime2	4959.9999815226
ontime3	4959.9999815226
ontime5	4959.9999815226
ontime6	4959.9999815226
ontime7	4959.9999815226
ontime8	4959.9999815226
l2events	48656



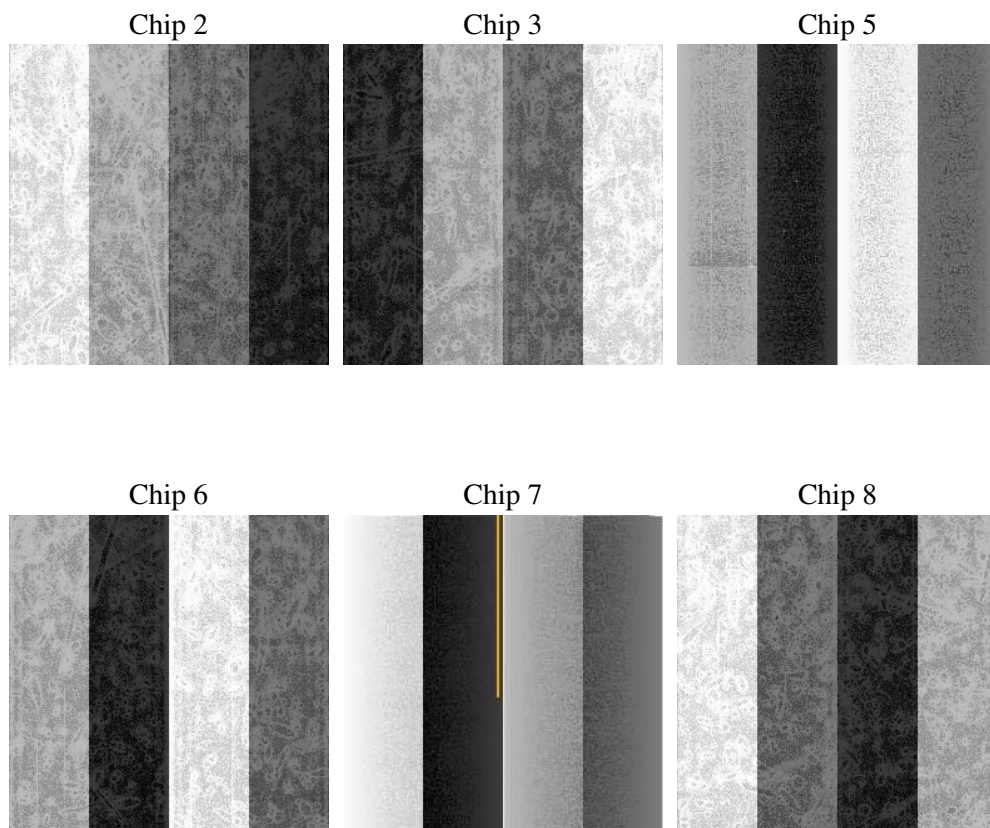
2 OBI

2.1 OBI

2.1.1 Images



2.1.2 Bias



2.1.3 Parameters

obi_num	0
ascdsver	7.6.9
caldsver	3.2.3
date	2006-09-21T00:20:11
revision	2

sched_exp_time	5000.000000
ontime	4965.212723583
ontime2	4965.212723583
ontime3	4965.212723583
ontime5	4965.212723583
ontime6	4965.212723583
ontime7	4965.212723583
ontime8	4965.212723583
l1events	231173

2.1.4 Events

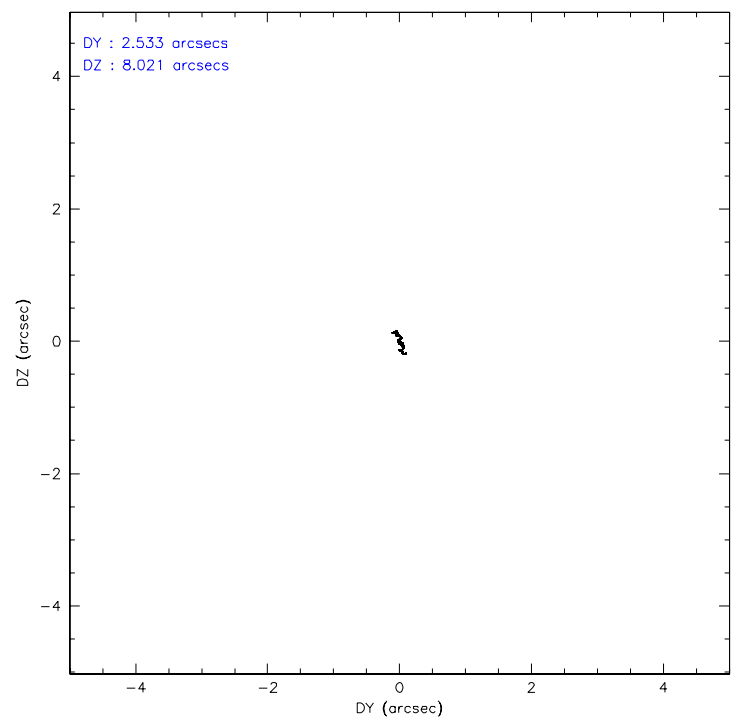
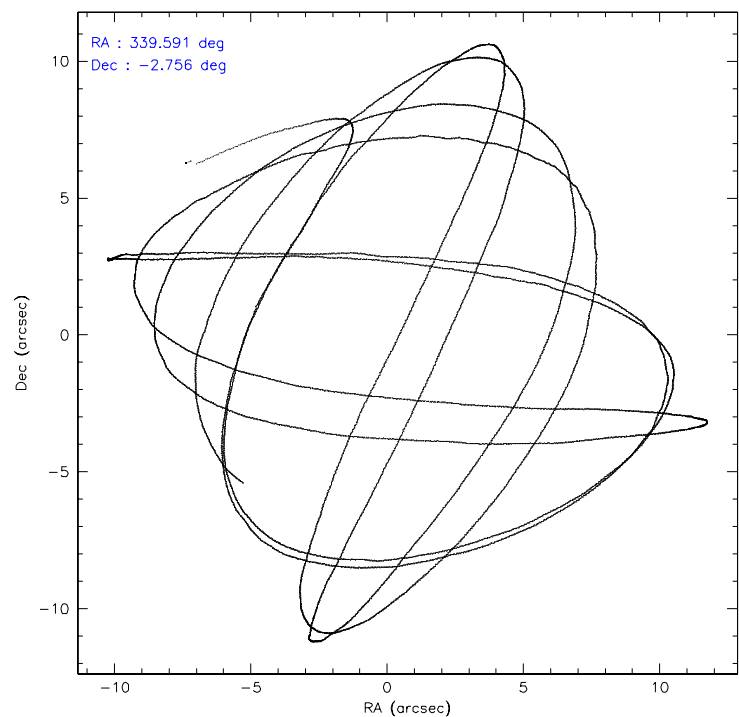
	ccd 2	ccd 3	ccd 5	ccd 6	ccd 7	ccd 8
level 1 events	33052	31322	48297	33029	42825	42648
rejected events	29233	27715	26635	29139	26715	34080
rejected %	88%	88%	55%	88%	62%	79%

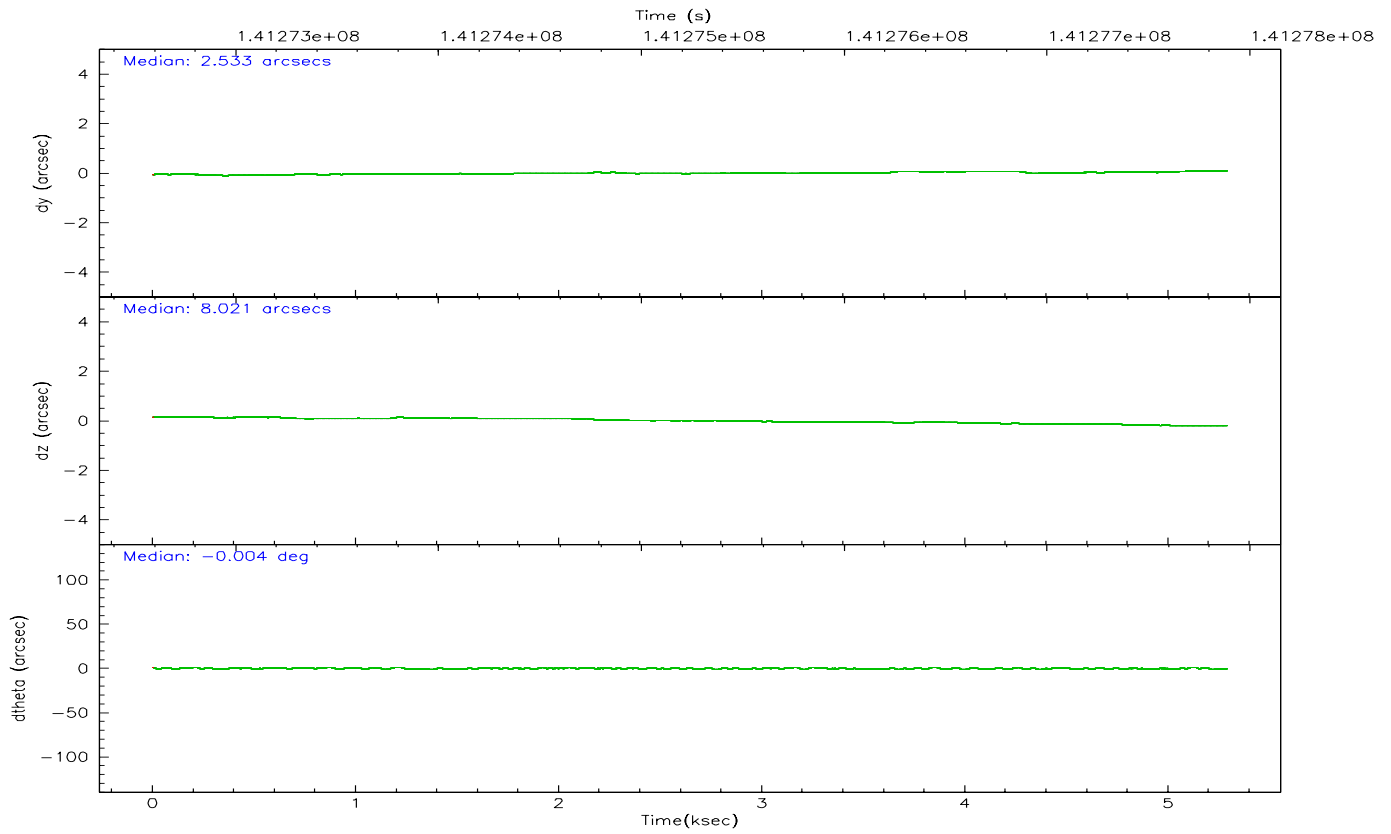
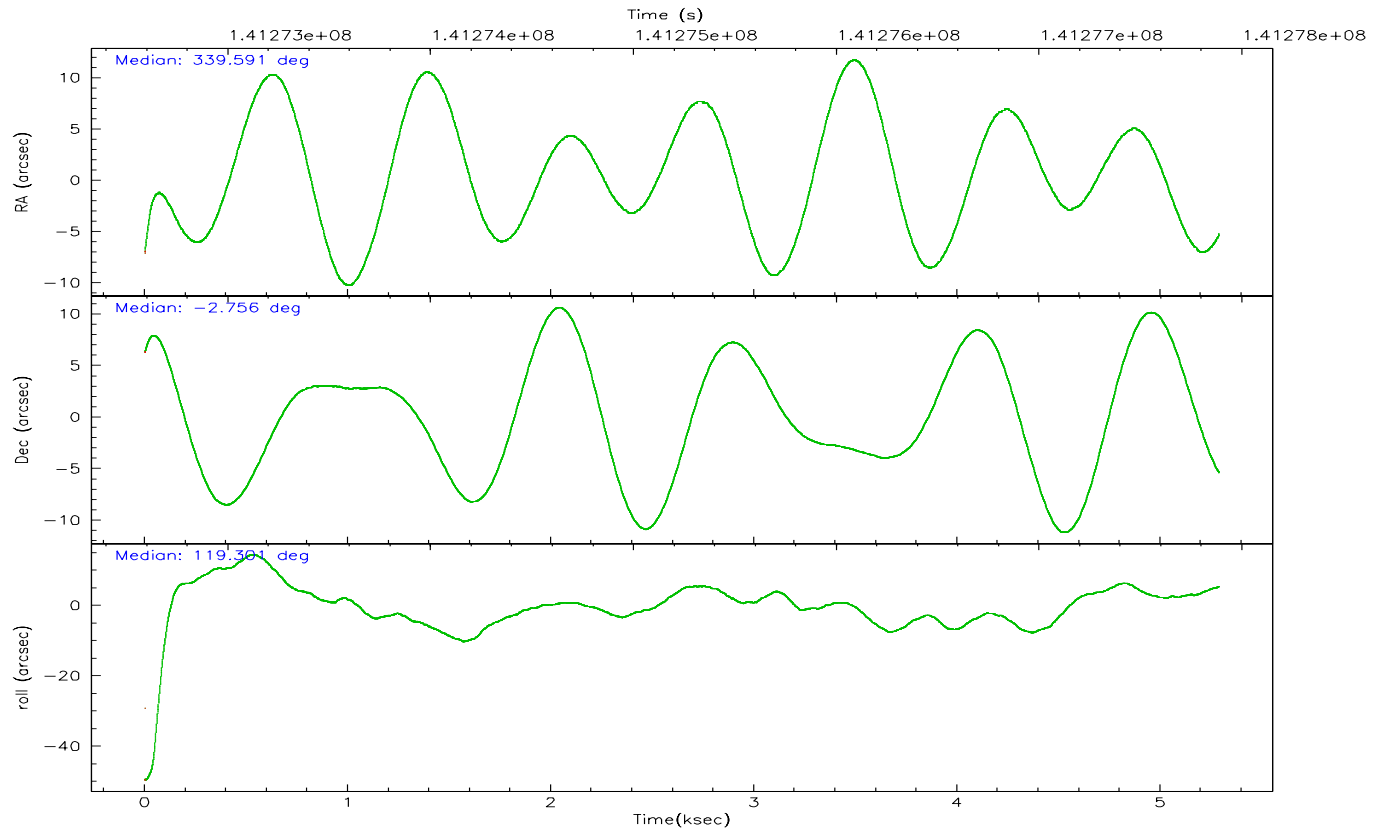
	ccd 2	ccd 3	ccd 5	ccd 6	ccd 7	ccd 8
grade 0 events	1640	1588	2198	1518	949	2664
	4%	5%	4%	4%	2%	6%
grade 1 events	12	18	64	12	32	19
	0%	0%	0%	0%	0%	0%
grade 2 events	808	688	6727	799	4045	1916
	2%	2%	13%	2%	9%	4%
grade 3 events	375	350	465	407	818	908
	1%	1%	0%	1%	1%	2%
grade 4 events	349	371	452	376	778	782
	1%	1%	0%	1%	1%	1%
grade 5 events	1143	1320	2378	1469	2676	1890
	3%	4%	4%	4%	6%	4%
grade 6 events	650	615	11840	796	9544	2320
	1%	1%	24%	2%	22%	5%
grade 7 events	28075	26372	24173	27652	23983	32149
	84%	84%	50%	83%	56%	75%

2.2 Compared Parameters

Parameter	Planned	Actual	Parameter	Planned	Actual
Instrument	ACIS	ACIS	Obspar format version number	6	6
Detector	ACIS-235678	ACIS-235678	Obspar file type	PREDICTED	ACTUAL
Grating	NONE	NONE	Obspar update status	NONE	UPDATED
Data mode	FAINT	FAINT	Number of optional ACIS chips dropped	0	0
Observation mode	POINTING	POINTING	On-chip summing requested	N	N
Pointing RA	339.614196	339.5904638803971	Subarray requested	NONE	NONE
Pointing Dec	-2.769205	-2.755570280580935	Alternating exposures requested	N	N
Pointing Roll	119.137743	119.293099416887	Primary exposure time	0.000000	3.2
SIM focus pos (mm)	-0.684267	-0.6828225247311905			
SIM defocus (mm)	0	0.001444936568705701			
SIM translation stage pos (mm)	-190.132523	-190.1425803651734			
SIM translation stage offset (mm)	0	0.01005778216563158			
Observation start time	141272886.184000	141271862.6845			
Observation start date	2002-06-24T02:27:02	2002-06-24T02:11:02			
Observation end time	141277886.184000	141278496.99727			
Observation end date	2002-06-24T03:50:22	2002-06-24T04:01:36			
Read mode	TIMED	TIMED			

2.3 Aspect



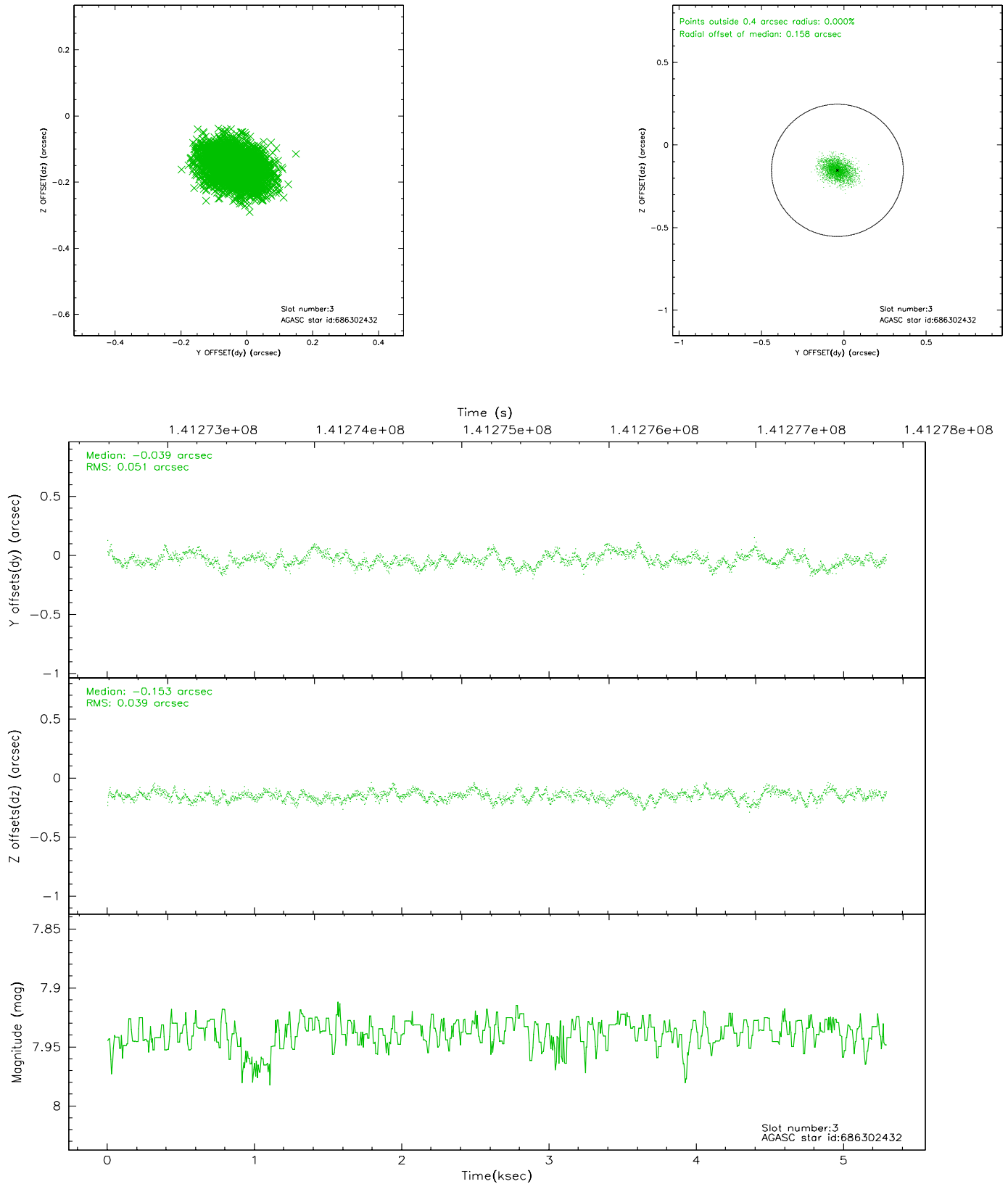


Slot Statistics

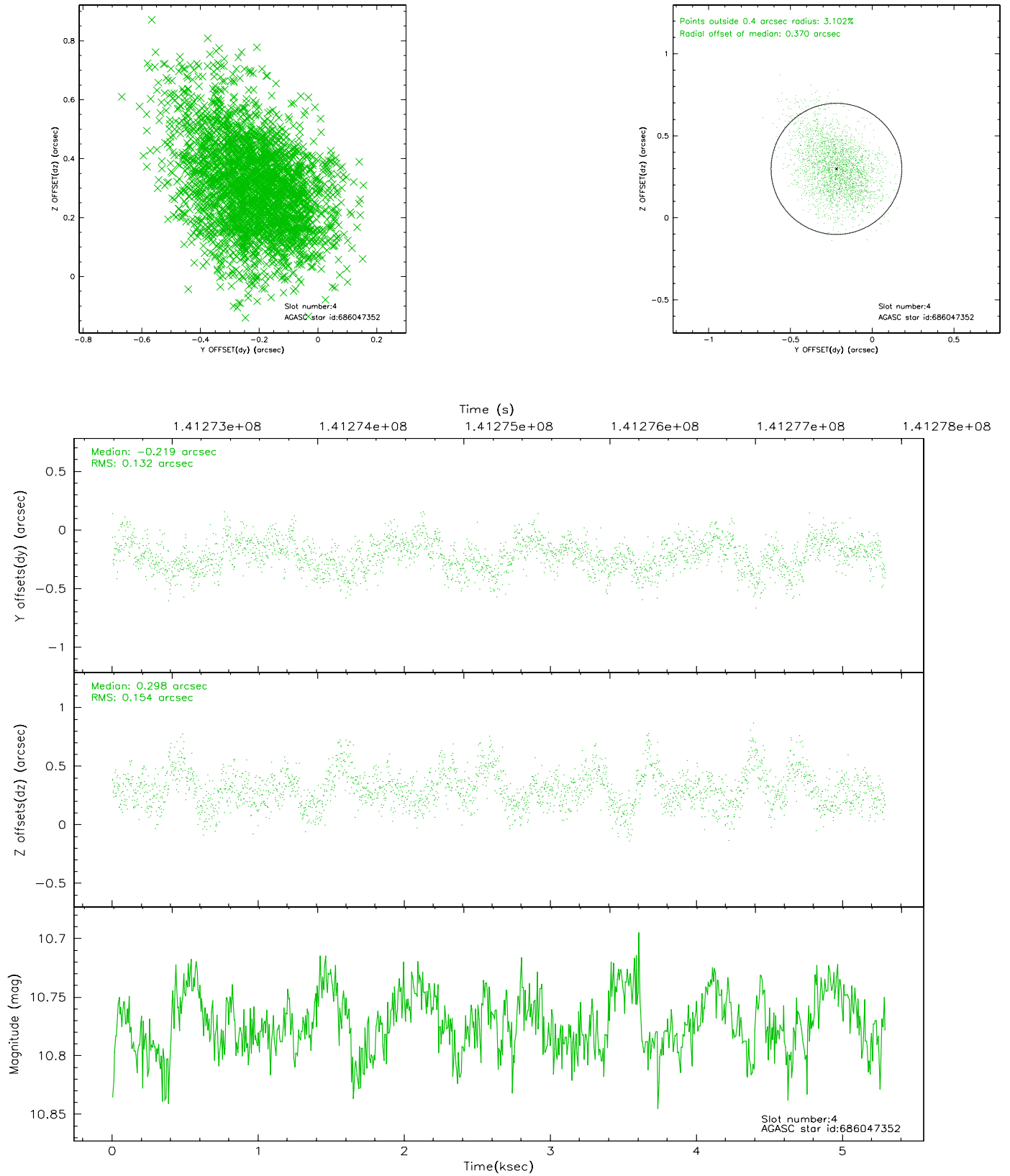
slot	status	id	mag	n_pts	med_dy	med_dz	dr1	dr2	ra	dec	mean_y	mean_z
0	FID	ACIS-S-2	7.11	1291	0.004	0.026	0.007	0.011	0.000000	0.000000	-755.17	-1729.13
1	FID	ACIS-S-4	7.20	1291	-0.091	-0.009	0.005	0.009	0.000000	0.000000	2157.51	178.12
2	FID	ACIS-S-5	7.24	1291	0.055	-0.008	0.007	0.011	0.000000	0.000000	-1806.48	173.11
3	GUIDE	686302432	7.94	2581	-0.039	-0.153	0.067	0.113	339.735415	-3.025854	-1018.79	69.43
4	GUIDE	686047352	10.77	2579	-0.219	0.298	0.210	0.364	340.016753	-2.239482	959.92	-2193.05
5	GUIDE	686294840	8.15	2580	-0.009	-0.149	0.083	0.134	339.527749	-2.898612	-254.71	497.67
6	GUIDE	686432304	9.75	2578	0.143	0.121	0.119	0.185	340.023808	-3.179311	-2006.30	-566.35
7	GUIDE	686302544	9.68	2578	0.130	-0.119	0.098	0.162	339.763105	-3.182117	-1559.18	256.36

2.4 Star Slots

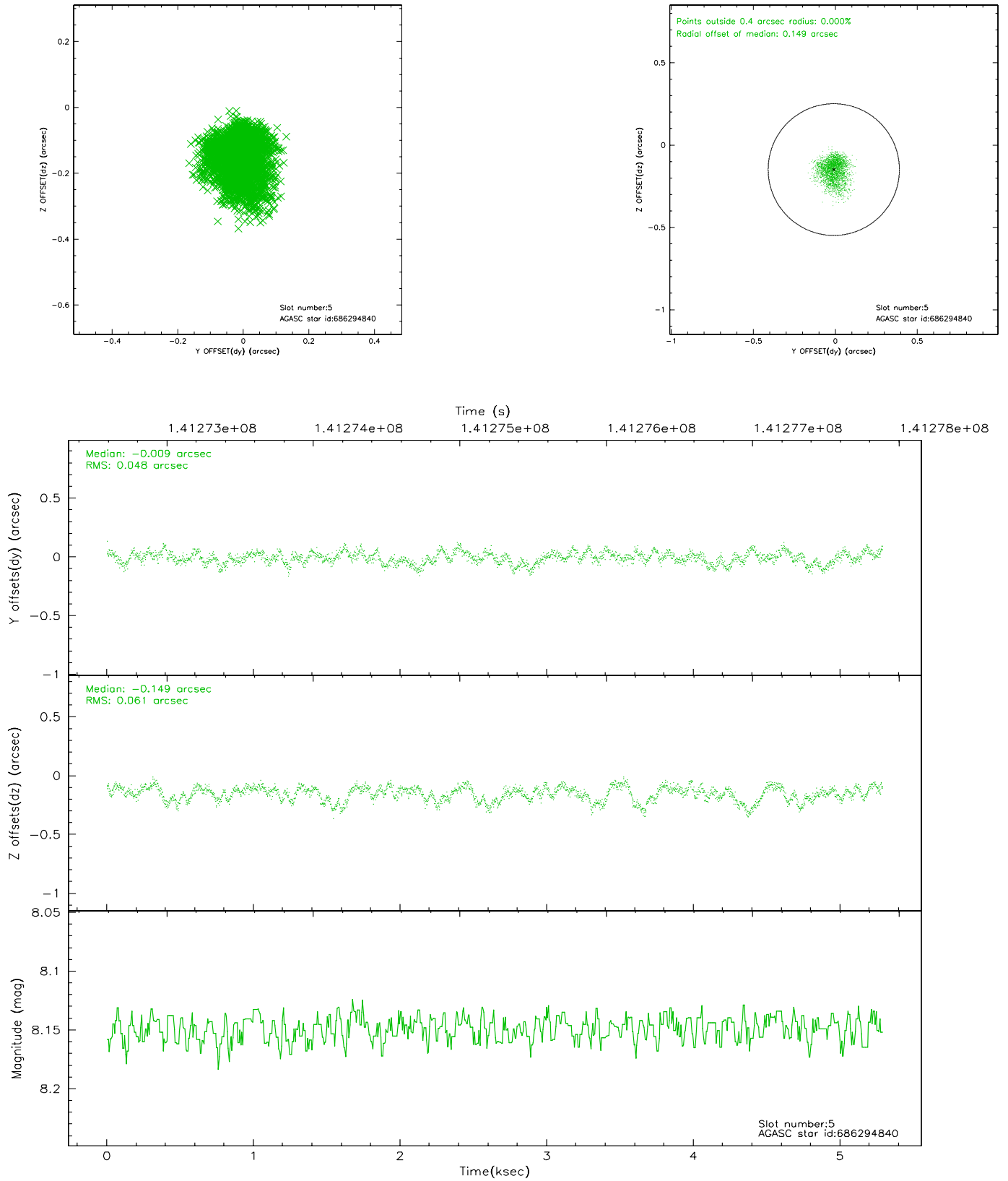
2.4.1 Slot 3



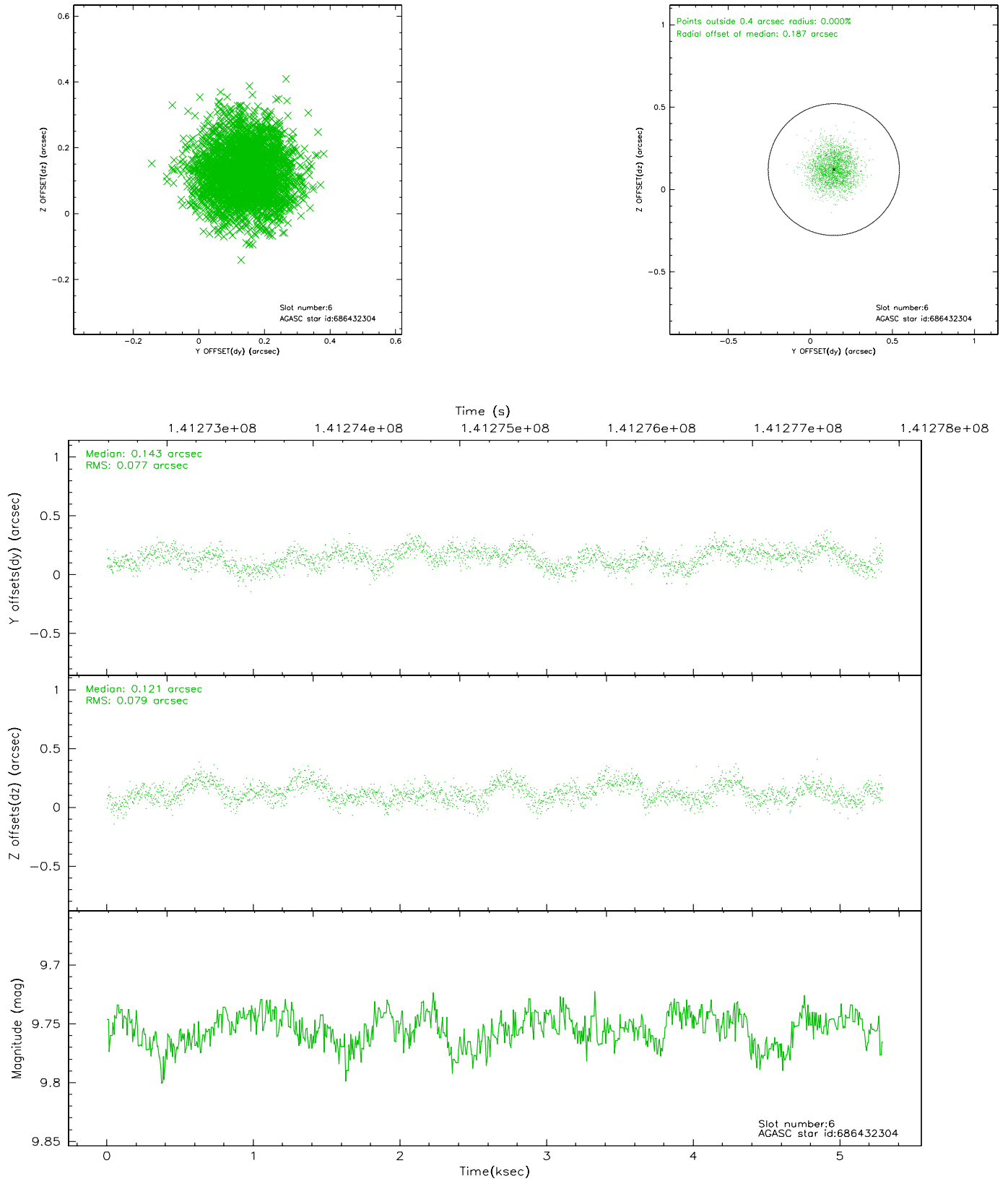
2.4.2 Slot 4



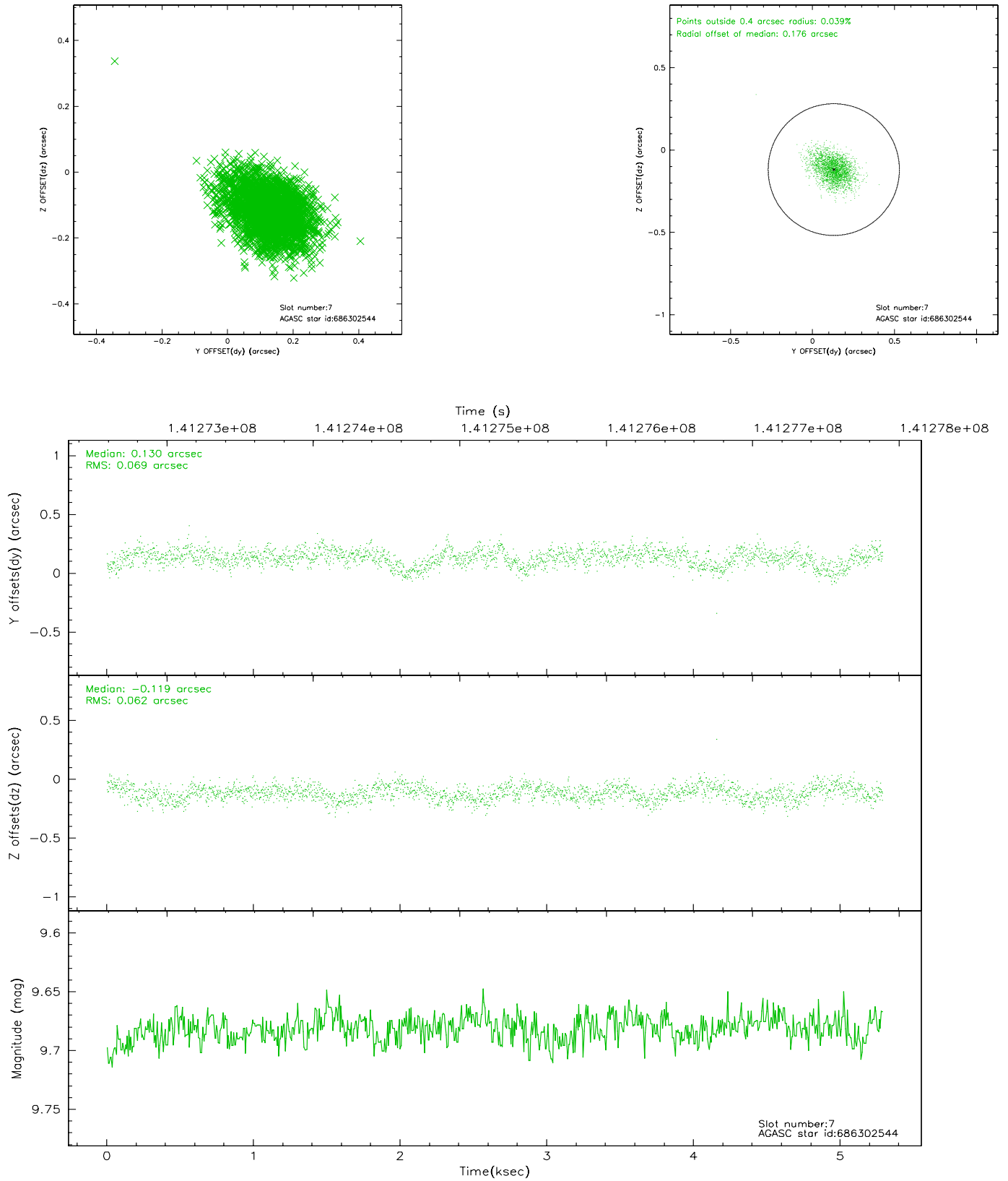
2.4.3 Slot 5



2.4.4 Slot 6

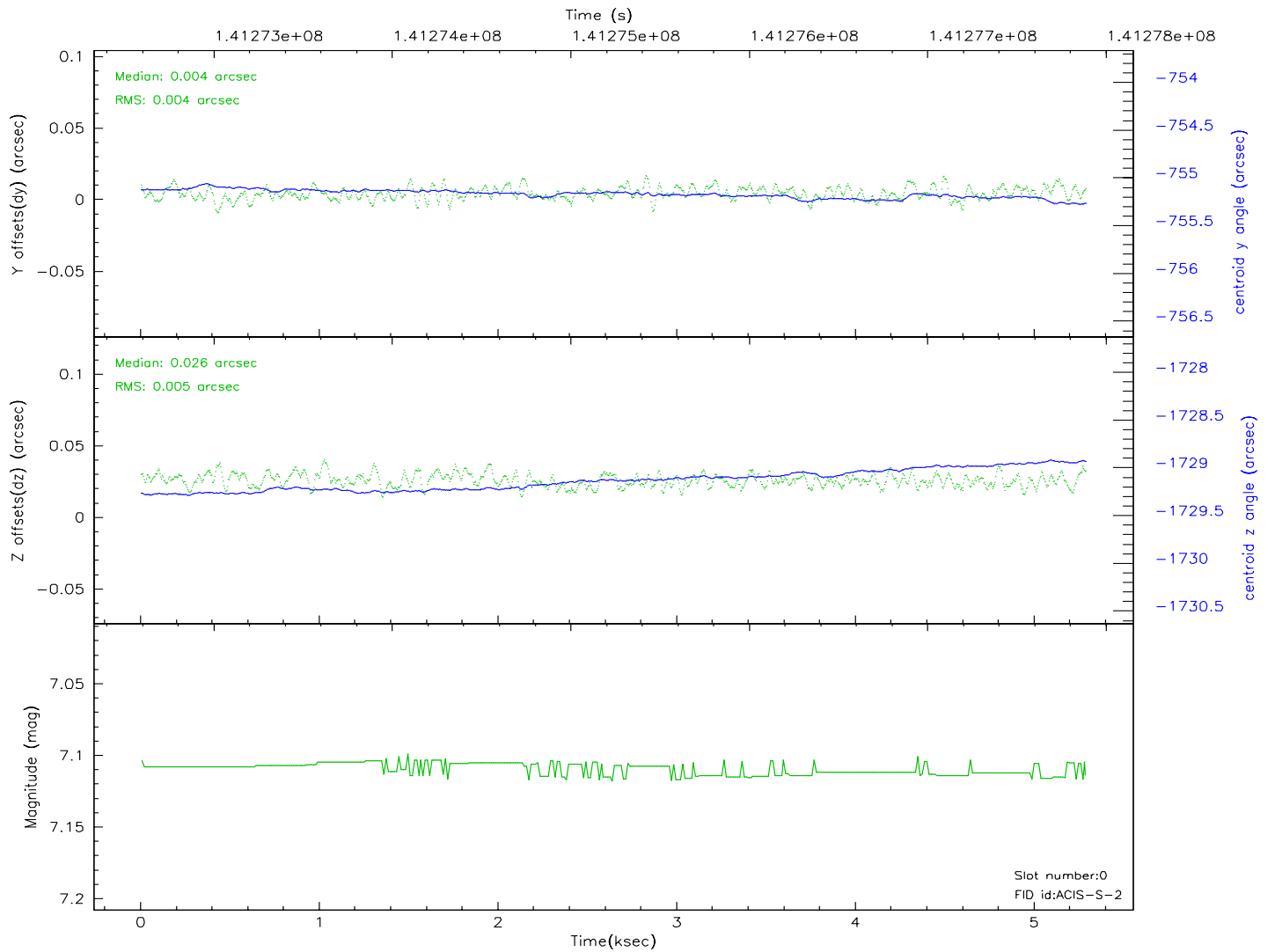
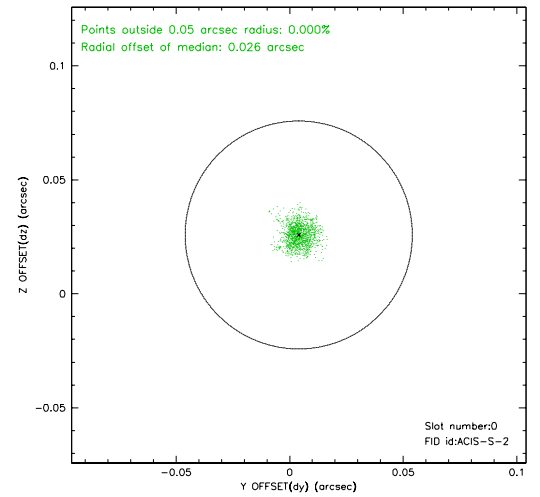
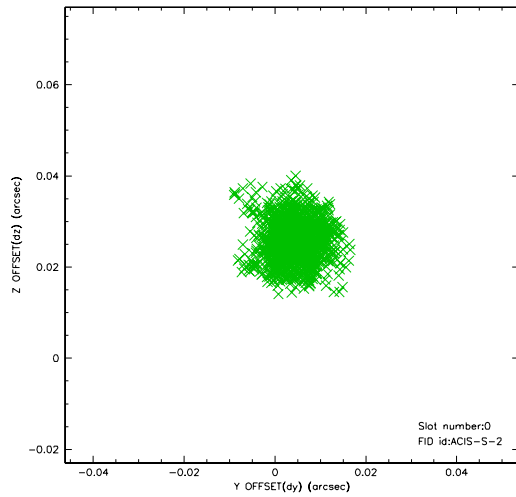


2.4.5 Slot 7

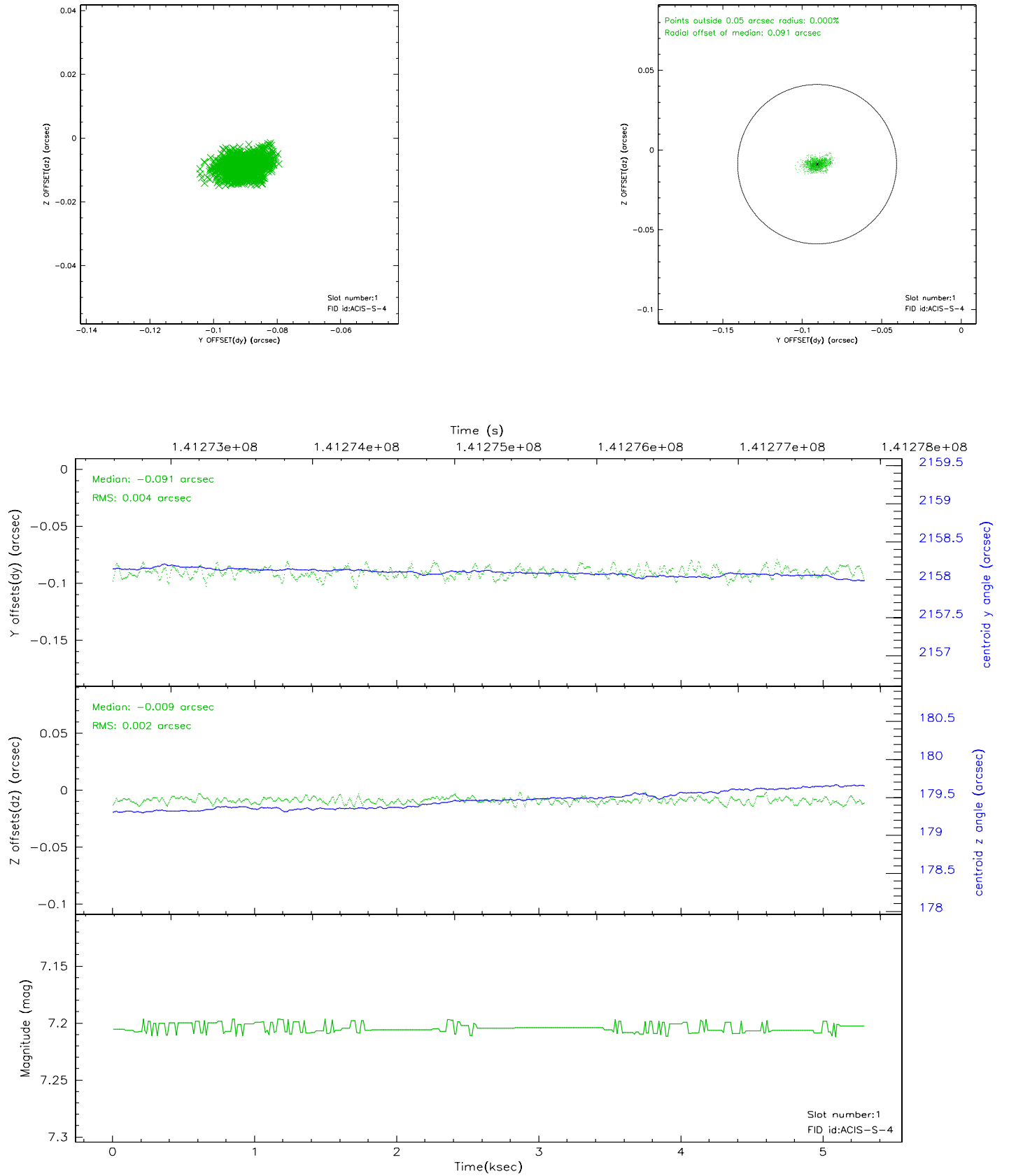


2.5 FID Slots

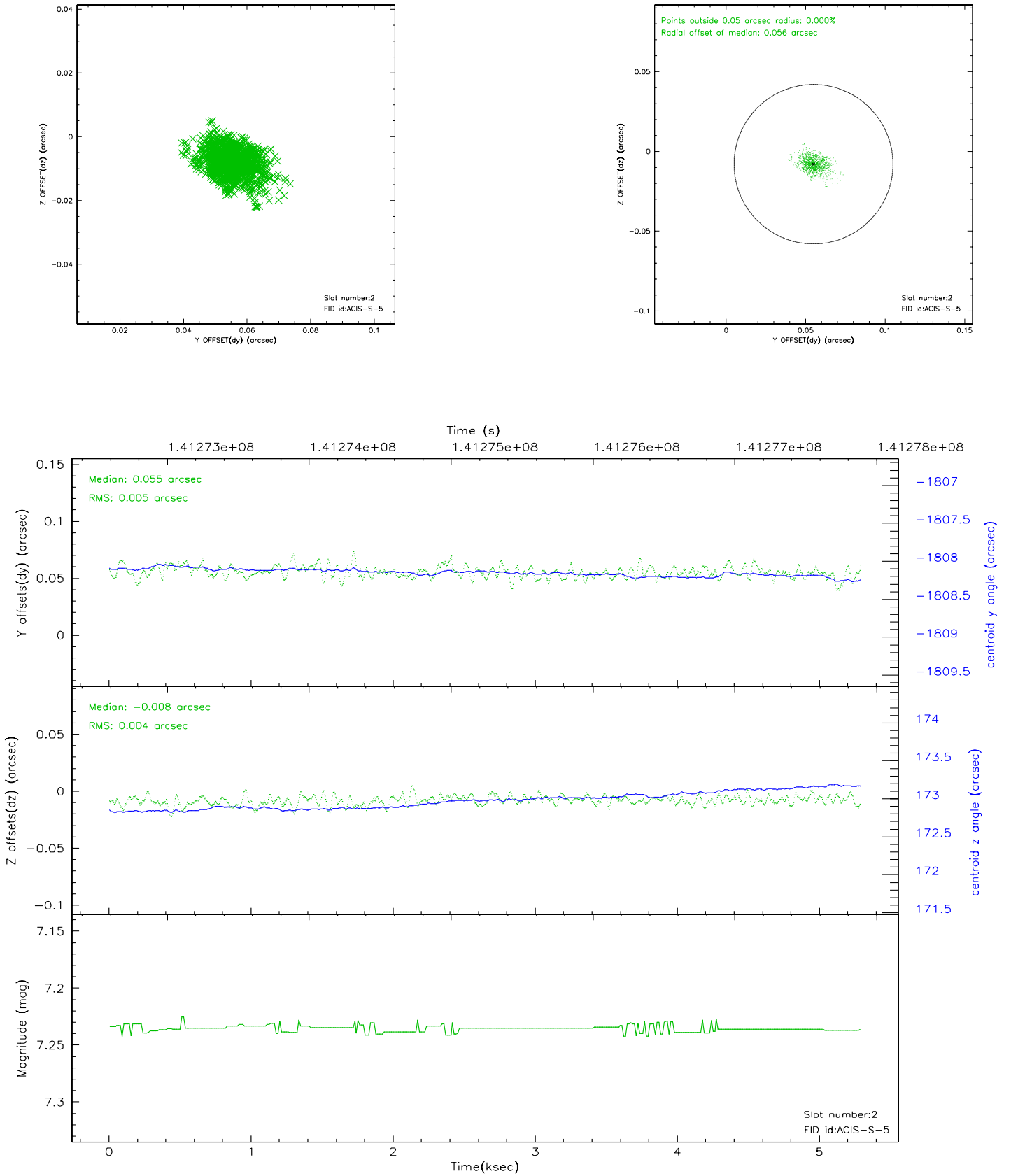
2.5.1 Slot 0



2.5.2 Slot 1



2.5.3 Slot 2



3 Point Sources

A Summary

A.1 Status

V&V Scientist	Beth Sundheim
V&V Date (YYYY-MM-DD)	2006.09.21
V&V Edition	1
V&V Disposition and Status	OK
V&V Charge Time	4.963

A.2 Comments