

# V&V Reference Report

## L2 ASCDS Version : 7.6.9

Observation 2927 - L2 Version 001  
Chandra X-Ray Center

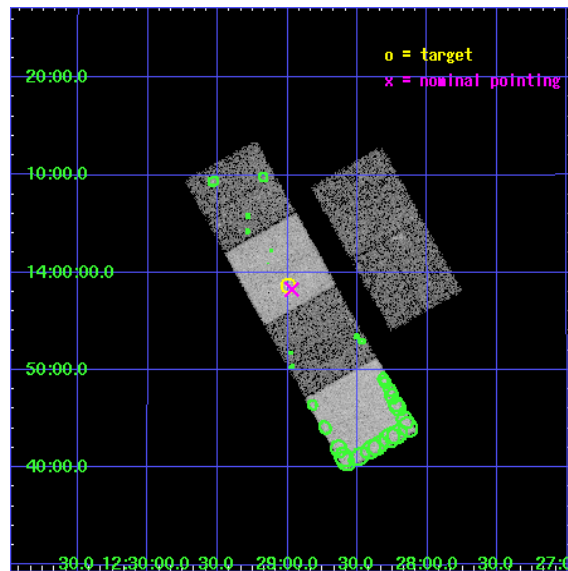
L2 Processing Date : Sep 18 2006

## Contents

<b>1</b>	<b>Front</b>	<b>2</b>
<b>2</b>	<b>OBI</b>	<b>3</b>
2.1	OBI . . . . .	3
2.1.1	Images . . . . .	3
2.1.2	Bias . . . . .	3
2.1.3	Parameters . . . . .	4
2.1.4	Events . . . . .	4
2.2	Compared Parameters . . . . .	5
2.3	Aspect . . . . .	6
2.4	Star Slots . . . . .	9
2.4.1	Slot 3 . . . . .	9
2.4.2	Slot 4 . . . . .	10
2.4.3	Slot 5 . . . . .	11
2.4.4	Slot 6 . . . . .	12
2.4.5	Slot 7 . . . . .	13
2.5	FID Slots . . . . .	14
2.5.1	Slot 0 . . . . .	14
2.5.2	Slot 1 . . . . .	15
2.5.3	Slot 2 . . . . .	16
<b>3</b>	<b>Point Sources</b>	<b>17</b>
<b>A</b>	<b>Summary</b>	<b>18</b>
A.1	Status . . . . .	18
A.2	Comments . . . . .	18

# 1 Front

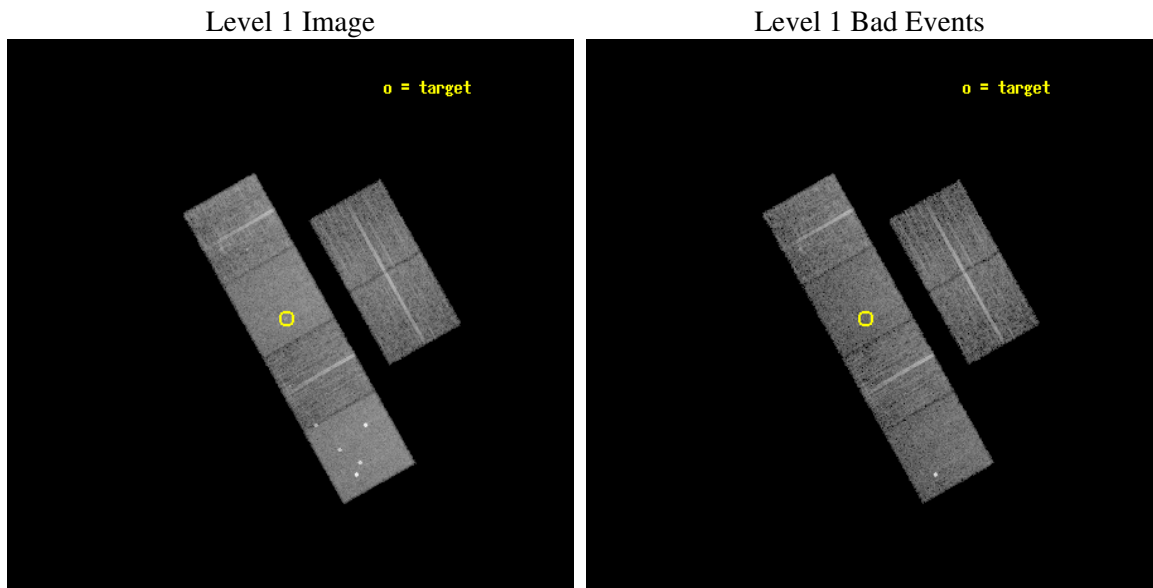
seq_num	600264
obs_id	2927
title	CHANDRA SURVEY OF GALAXIES WITH KNOWN BLACK HOLE MASSES
observer	Dr. Andrew Ptak
object	NGC 4459
dtcycle	0
cycle	P
ra_targ	187.24875
dec_targ	13.978889
ra_nom	187.24234463889
dec_nom	13.971357192518
roll_nom	240.60842144769
revision	2
ontime	9961.5999628901
livetime	9835.4601860047
ontime2	9961.5999628901
ontime3	9961.5999628901
ontime5	9961.5999628901
ontime6	9961.5999628901
ontime7	9961.5999628901
ontime8	9961.5999628901
l2events	102369



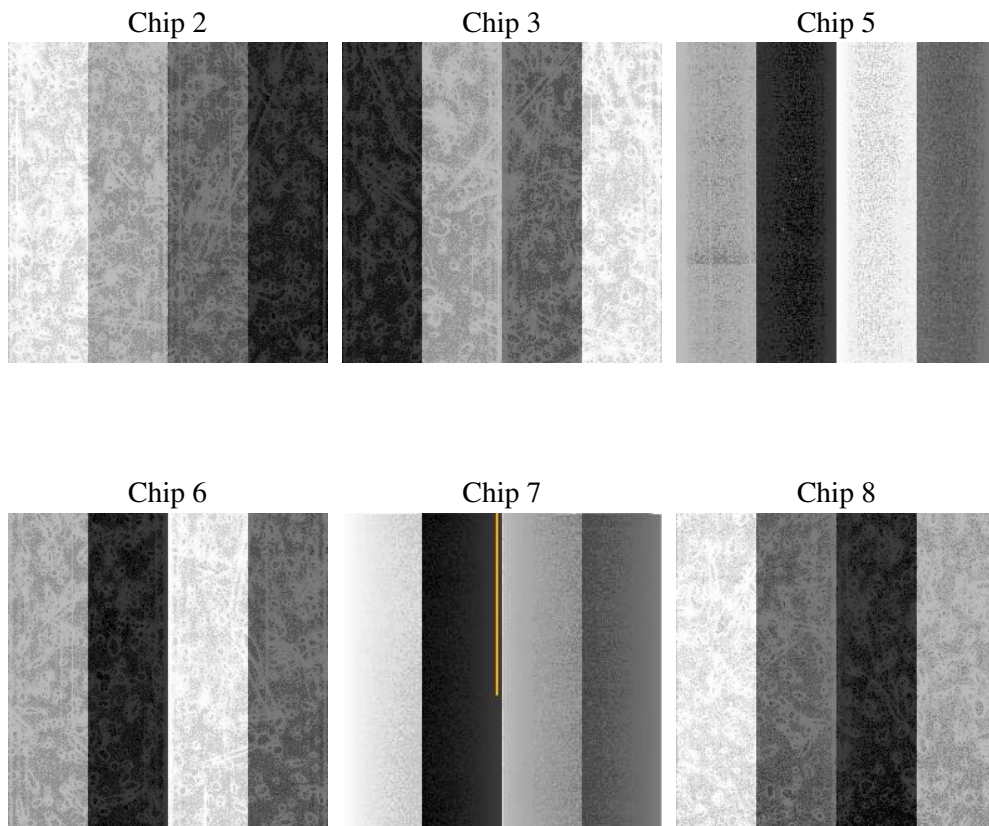
## 2 OBI

### 2.1 OBI

#### 2.1.1 Images



#### 2.1.2 Bias



### 2.1.3 Parameters

obi_num	0
ascdsver	7.6.9
caldbver	3.2.3
date	2006-09-18T03:26:36
revision	2

sched_exp_time	10000.000000
ontime	9966.0751671195
ontime2	9966.0751671195
ontime3	9966.0751671195
ontime5	9966.0751671195
ontime6	9966.075137198
ontime7	9966.0751671195
ontime8	9966.0751671195
l1events	459654

### 2.1.4 Events

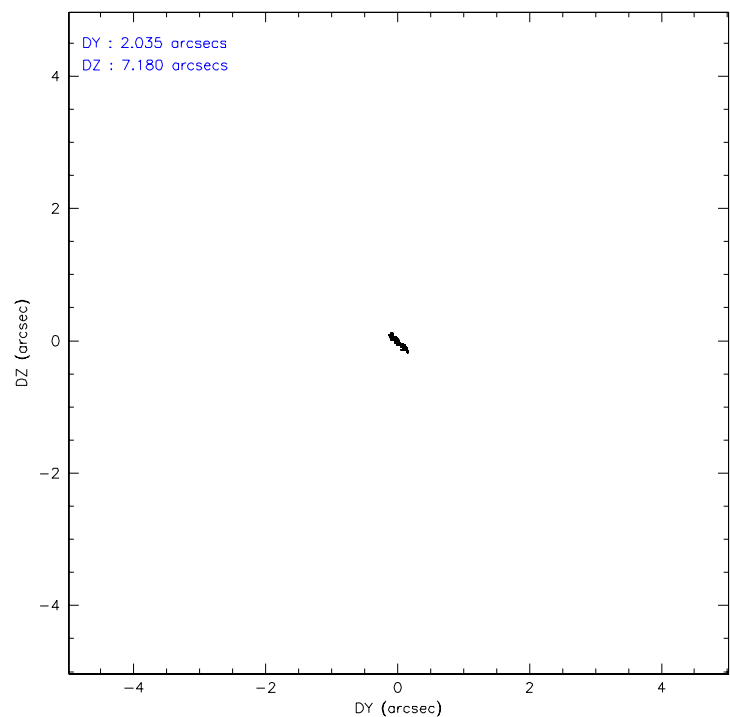
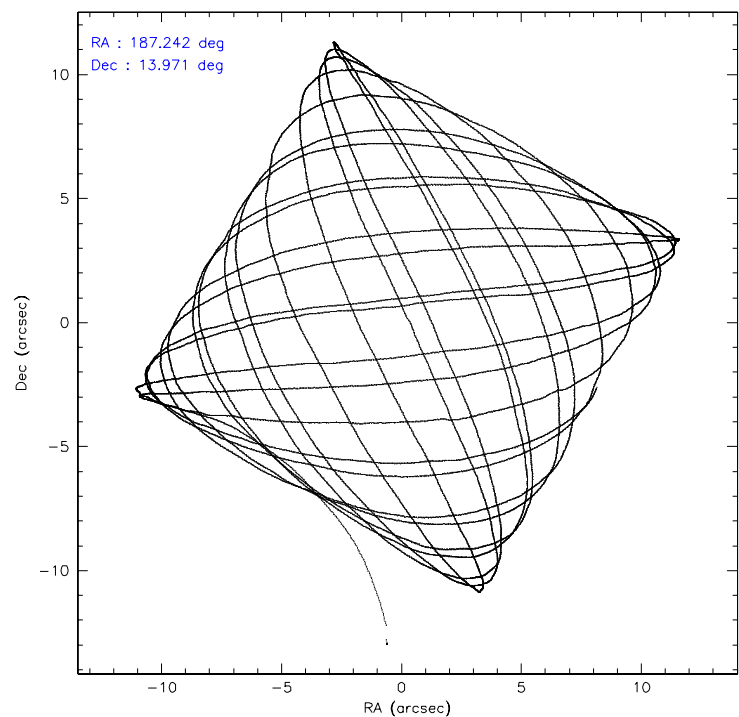
	ccd 2	ccd 3	ccd 5	ccd 6	ccd 7	ccd 8
level 1 events	62760	63549	99895	66713	85440	81297
rejected events	54492	55646	52806	57862	51424	63737
rejected %	86%	87%	52%	86%	60%	78%

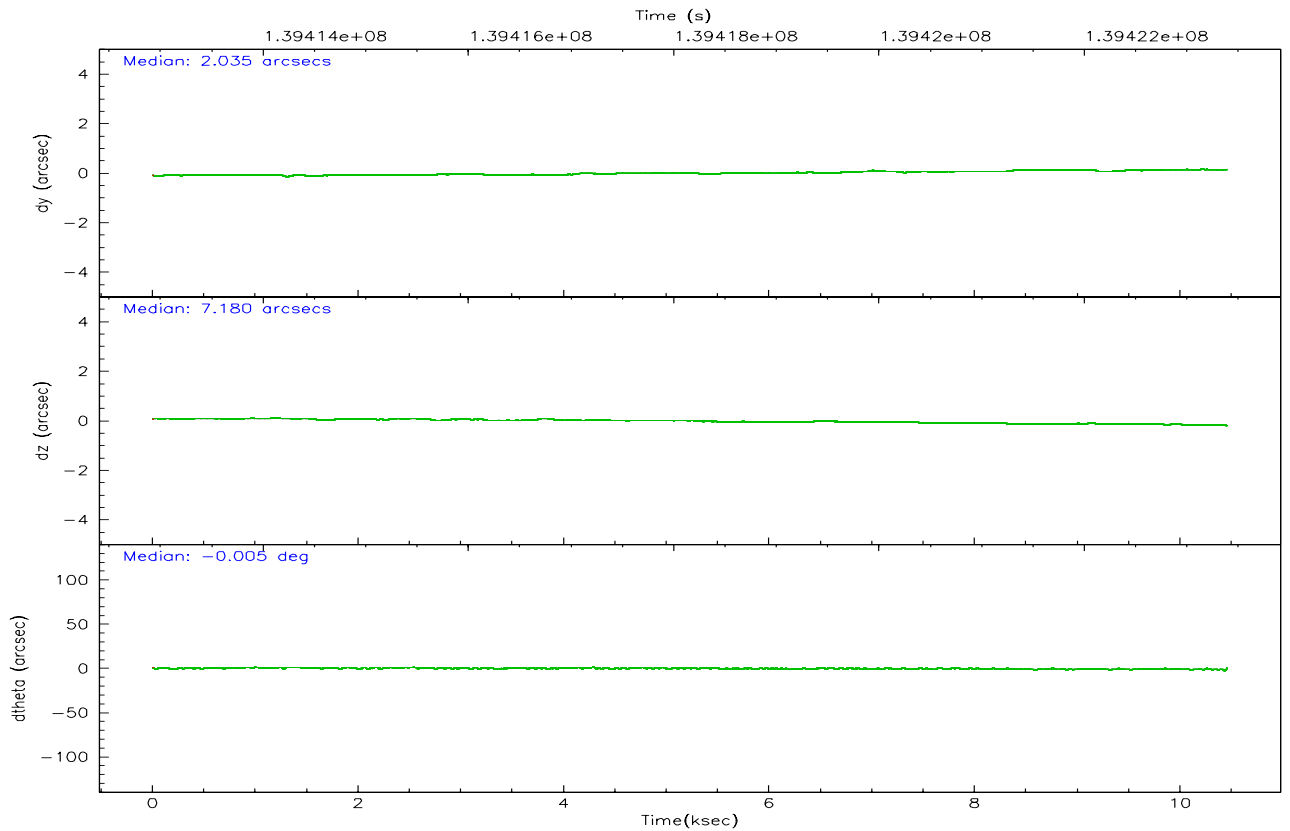
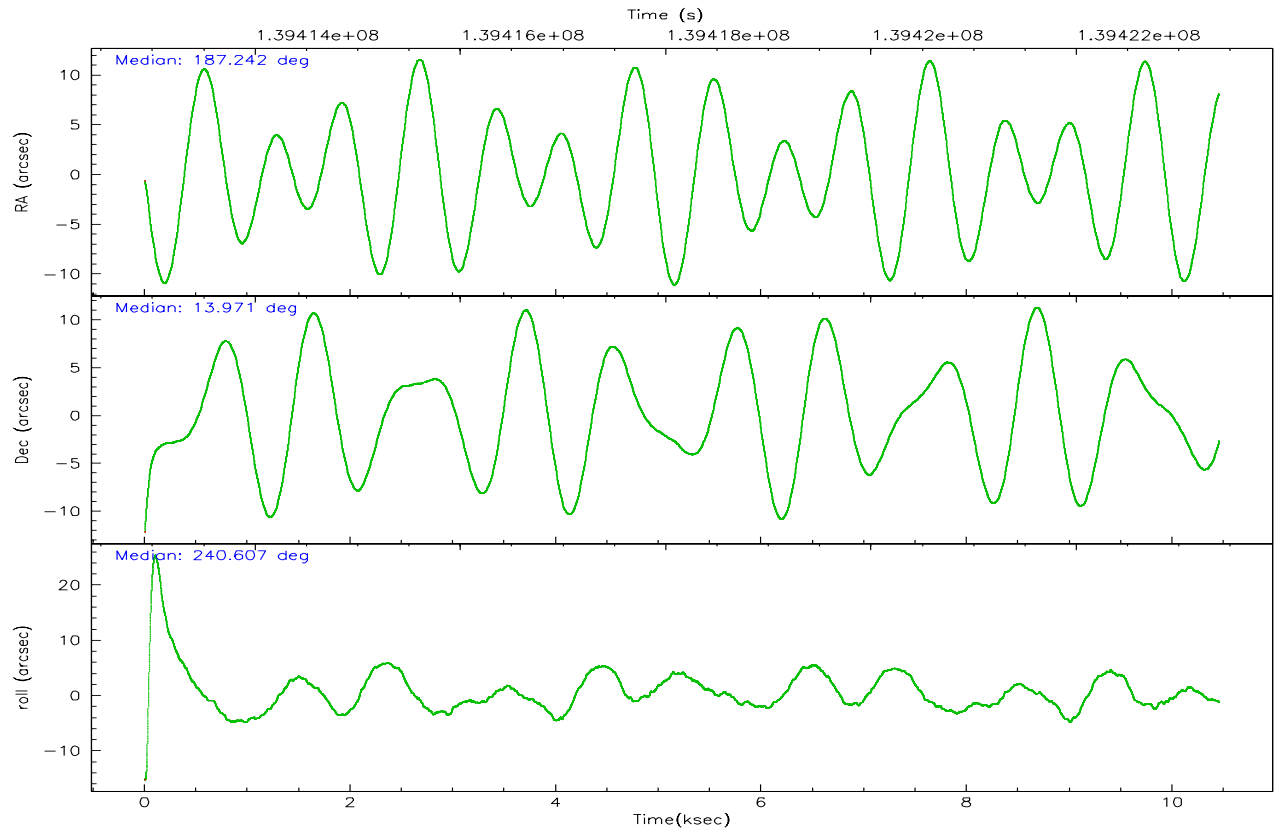
	ccd 2	ccd 3	ccd 5	ccd 6	ccd 7	ccd 8
grade 0 events	3898	3619	7773	4221	2630	6076
	6%	5%	7%	6%	3%	7%
grade 1 events	31	22	494	33	40	55
	0%	0%	0%	0%	0%	0%
grade 2 events	1651	1499	13855	1673	8317	3652
	2%	2%	13%	2%	9%	4%
grade 3 events	689	696	1074	775	1911	1834
	1%	1%	1%	1%	2%	2%
grade 4 events	664	746	1026	742	1955	1756
	1%	1%	1%	1%	2%	2%
grade 5 events	2283	2495	4783	2776	5485	3443
	3%	3%	4%	4%	6%	4%
grade 6 events	1370	1346	23371	1443	19208	4247
	2%	2%	23%	2%	22%	5%
grade 7 events	52174	53126	47519	55050	45894	60234
	83%	83%	47%	82%	53%	74%

## 2.2 Compared Parameters

Parameter	Planned	Actual	Parameter	Planned	Actual
Instrument	ACIS	ACIS	Obspar format version number	6	6
Detector	ACIS-235678	ACIS-235678	Obspar file type	PREDICTED	ACTUAL
Grating	NONE	NONE	Obspar update status	NONE	UPDATED
Data mode	FAINT	FAINT	Number of optional ACIS chips dropped	0	0
Observation mode	POINTING	POINTING	On-chip summing requested	N	N
Pointing RA	187.241739	187.2423446388924	Subarray requested	NONE	NONE
Pointing Dec	13.998647	13.97135719251836	Alternating exposures requested	N	N
Pointing Roll	240.451994	240.6084214476943	Primary exposure time	0.000000	3.2
SIM focus pos (mm)	-0.684267	-0.6828225247311905			
SIM defocus (mm)	0	0.001444936568705701			
SIM translation stage pos (mm)	-190.132523	-190.1400660498719			
SIM translation stage offset (mm)	0	0.00754346686406393			
Observation start time	139413389.184000	139412291.20843			
Observation start date	2002-06-02T13:55:25	2002-06-02T13:38:11			
Observation end time	139423389.184000	139424032.58391			
Observation end date	2002-06-02T16:42:05	2002-06-02T16:53:52			
Read mode	TIMED	TIMED			

## 2.3 Aspect





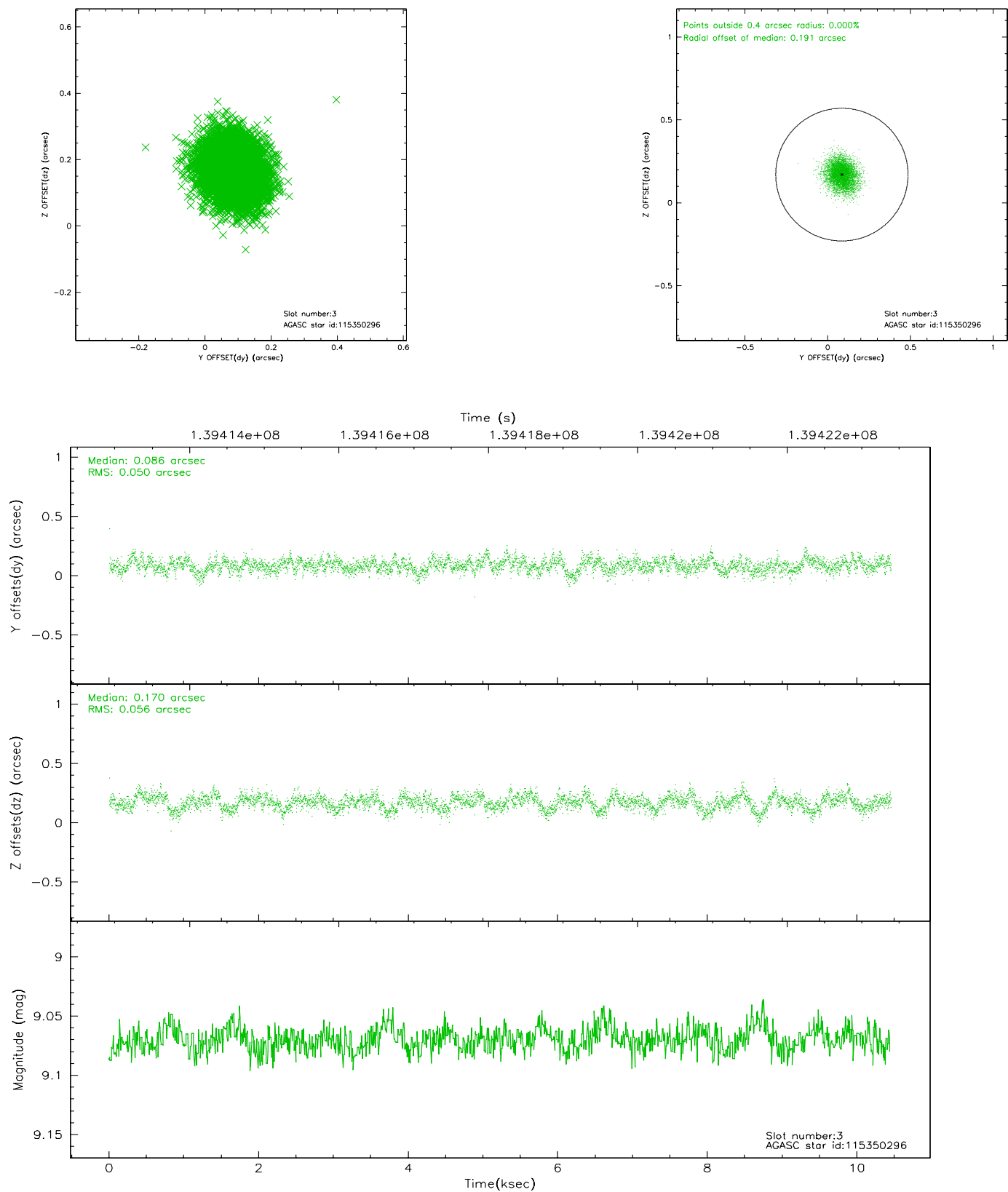
### Slot Statistics

slot	status	id	mag	n_pts	med_dy	med_dz	dr1	dr2	ra	dec	mean_y	mean_z
0	FID	ACIS-S-1	7.18	2551	0.004	-0.014	0.007	0.012	0.000000	0.000000	941.35	-1723.99
1	FID	ACIS-S-5	7.24	2551	0.039	0.026	0.006	0.010	0.000000	0.000000	-1807.29	173.14
2	FID	ACIS-S-6	7.35	2551	-0.064	-0.001	0.008	0.014	0.000000	0.000000	406.35	817.60
3	GUIDE	115350296	9.07	5098	0.086	0.170	0.080	0.129	187.140806	13.950701	322.93	-220.41
4	GUIDE	115344056	9.75	5087	0.029	-0.081	0.122	0.193	186.832724	14.436924	-671.52	-2018.24
5	GUIDE	115344368	10.28	5100	0.076	-0.125	0.151	0.237	187.412928	14.132996	-716.89	281.86
6	GUIDE	115349328	8.74	5100	0.008	-0.019	0.066	0.108	186.721628	14.043786	751.51	-1660.14
7	GUIDE	115343984	6.99	5100	-0.198	0.060	0.061	0.101	187.445111	14.650185	-2391.25	-539.96

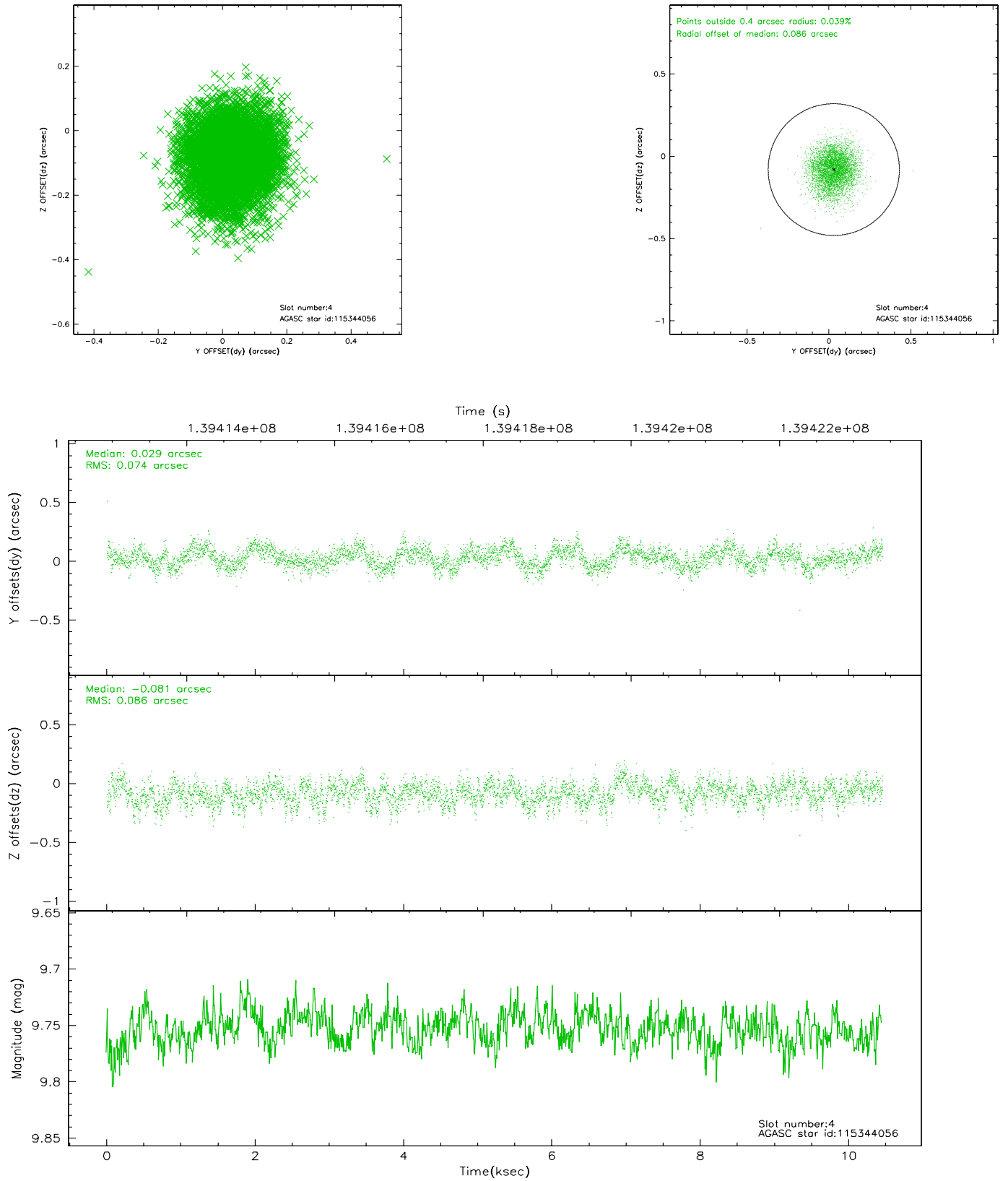


## 2.4 Star Slots

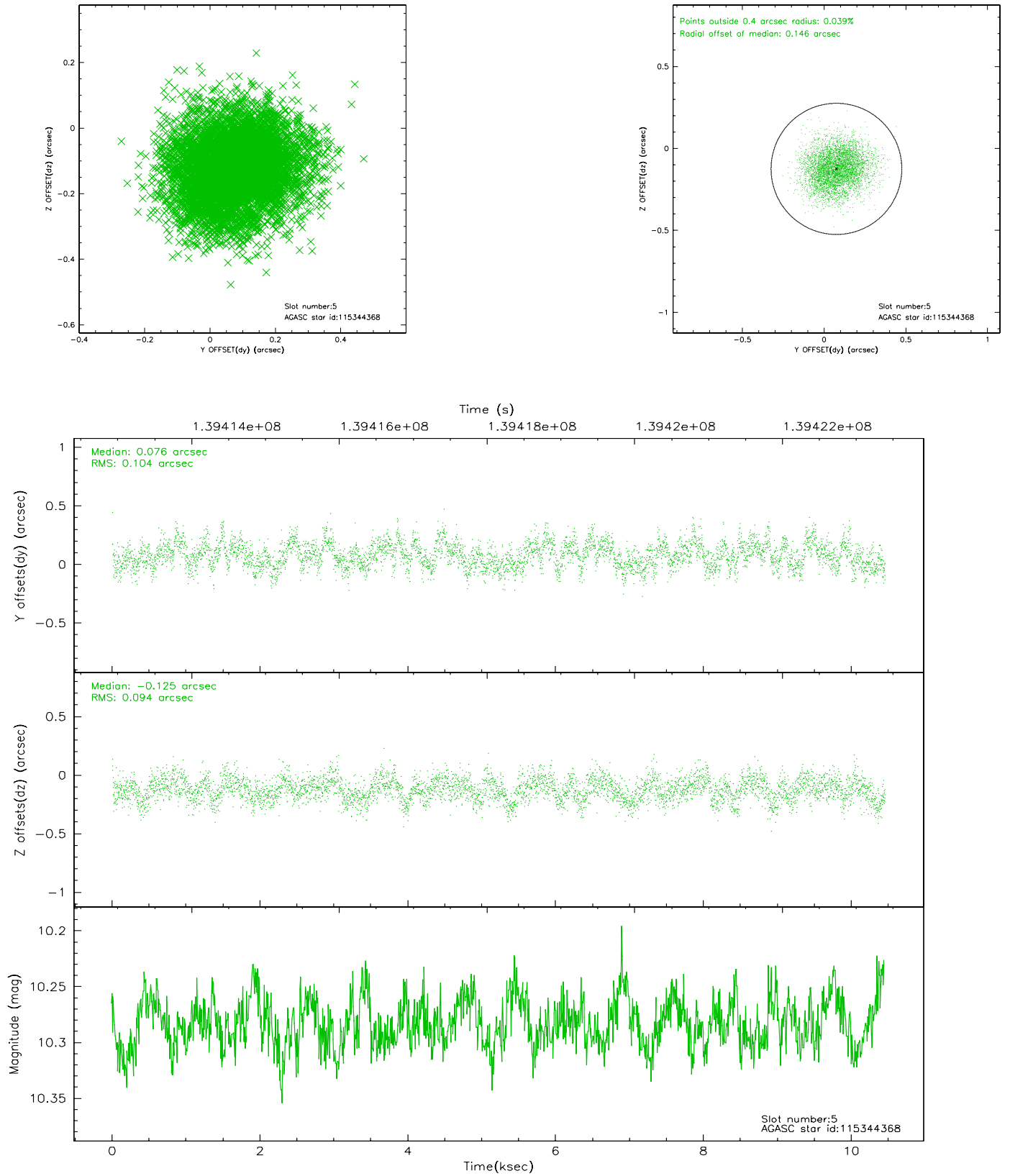
### 2.4.1 Slot 3



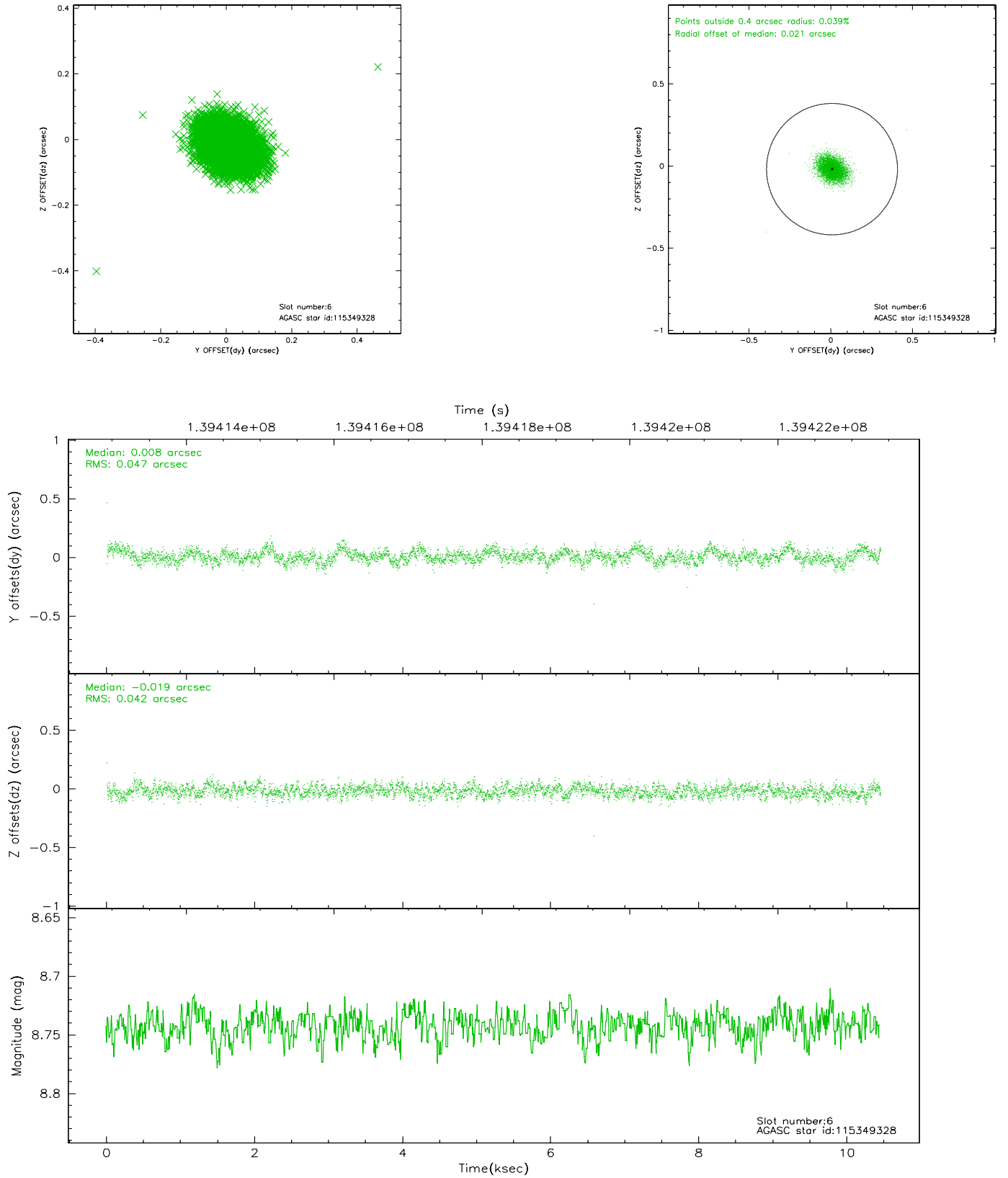
## 2.4.2 Slot 4



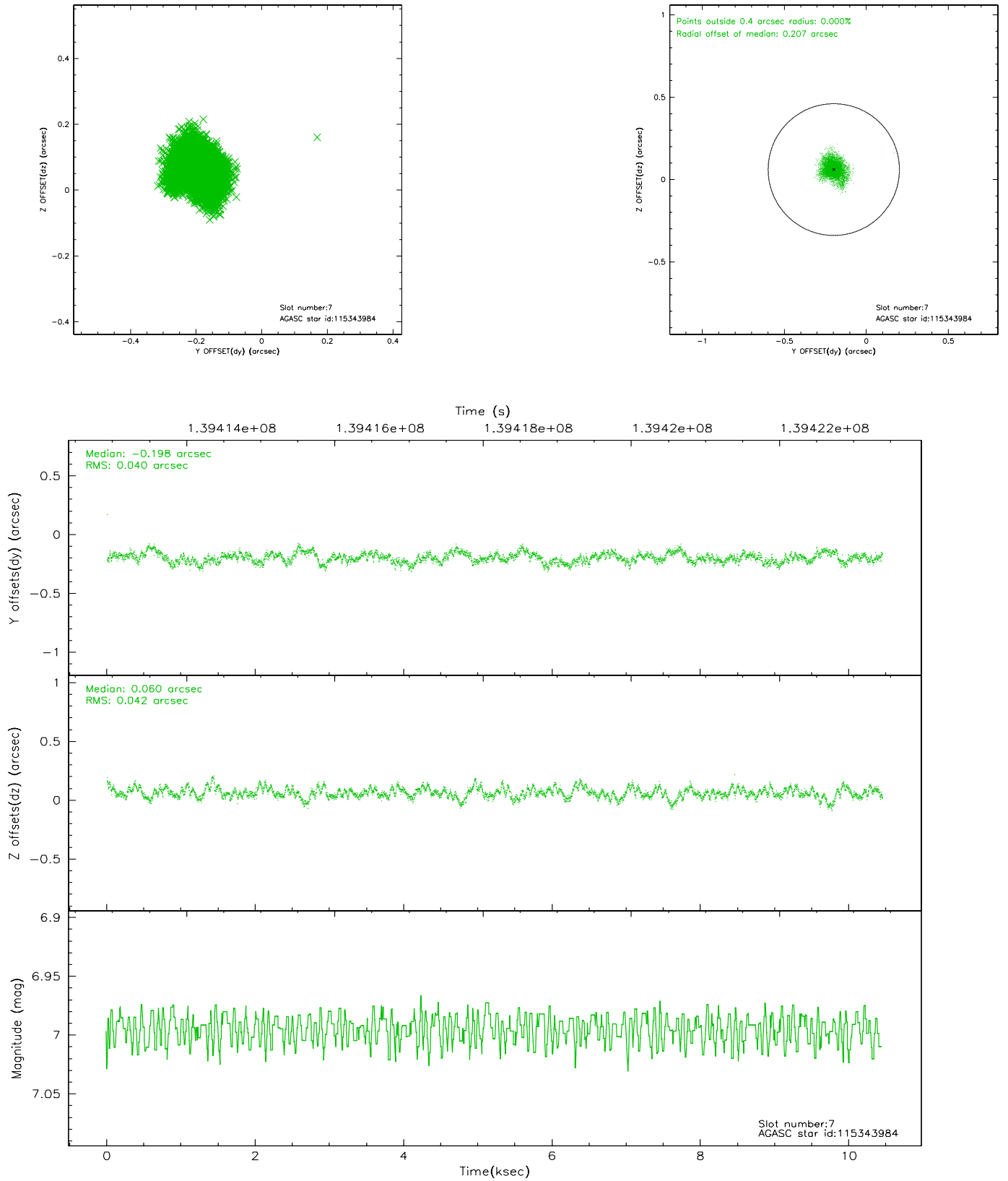
### 2.4.3 Slot 5



## 2.4.4 Slot 6

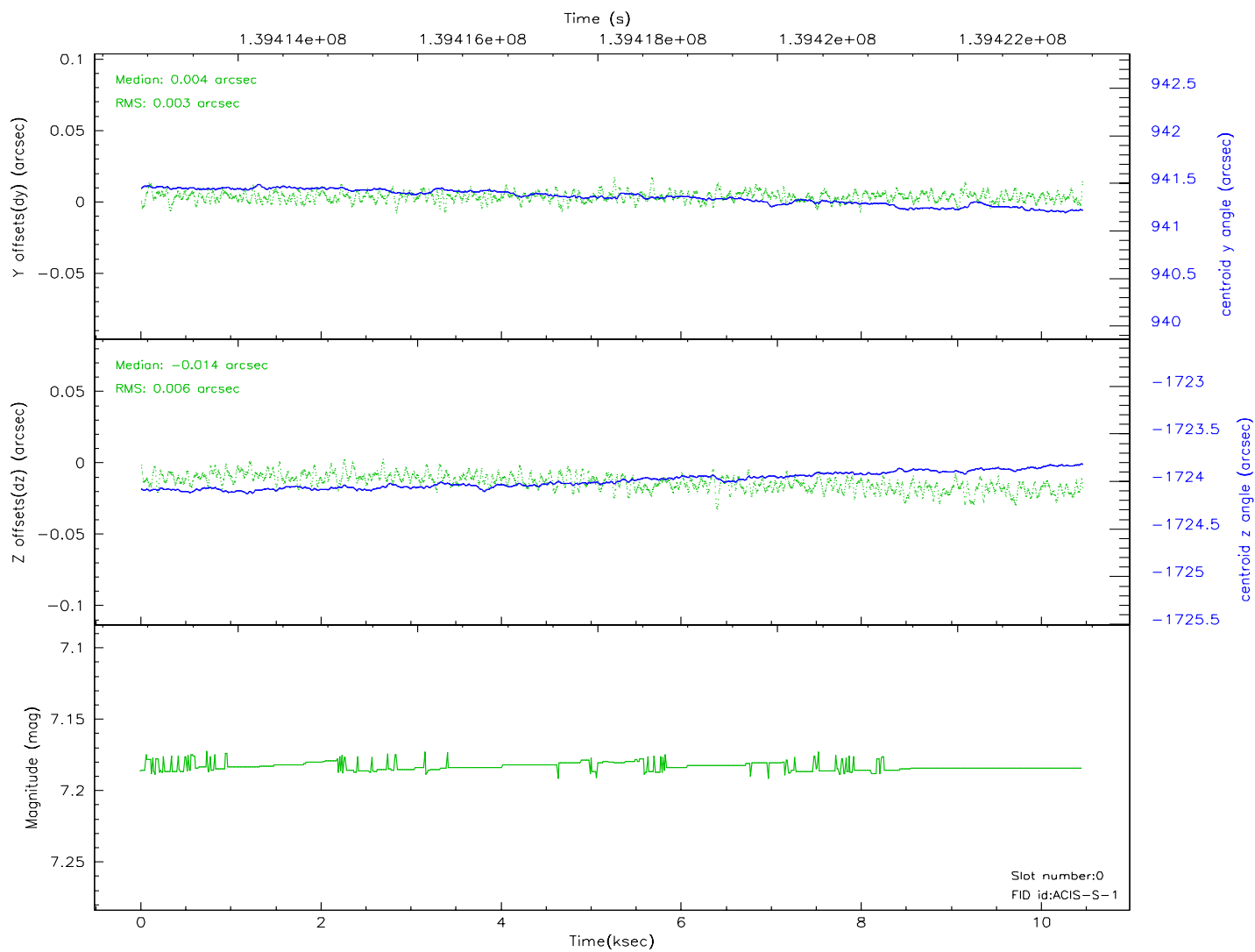
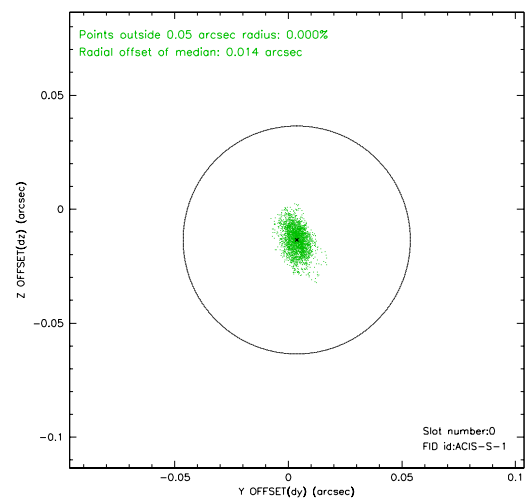
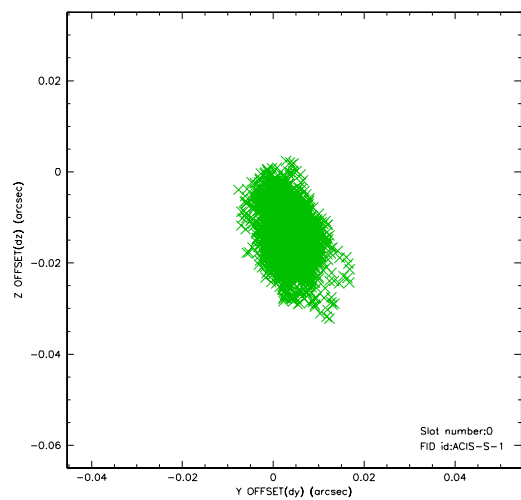


## 2.4.5 Slot 7

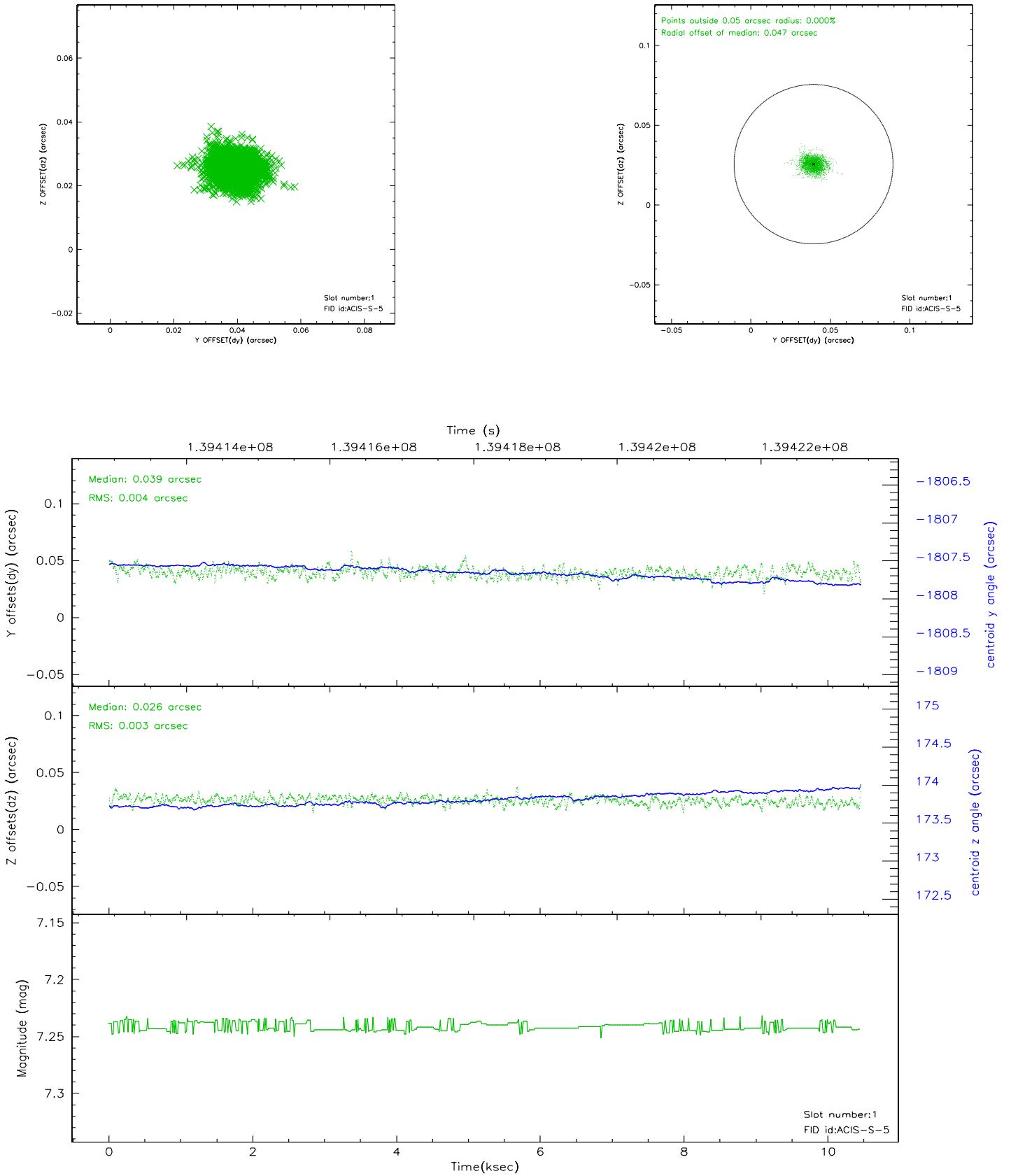


## 2.5 FID Slots

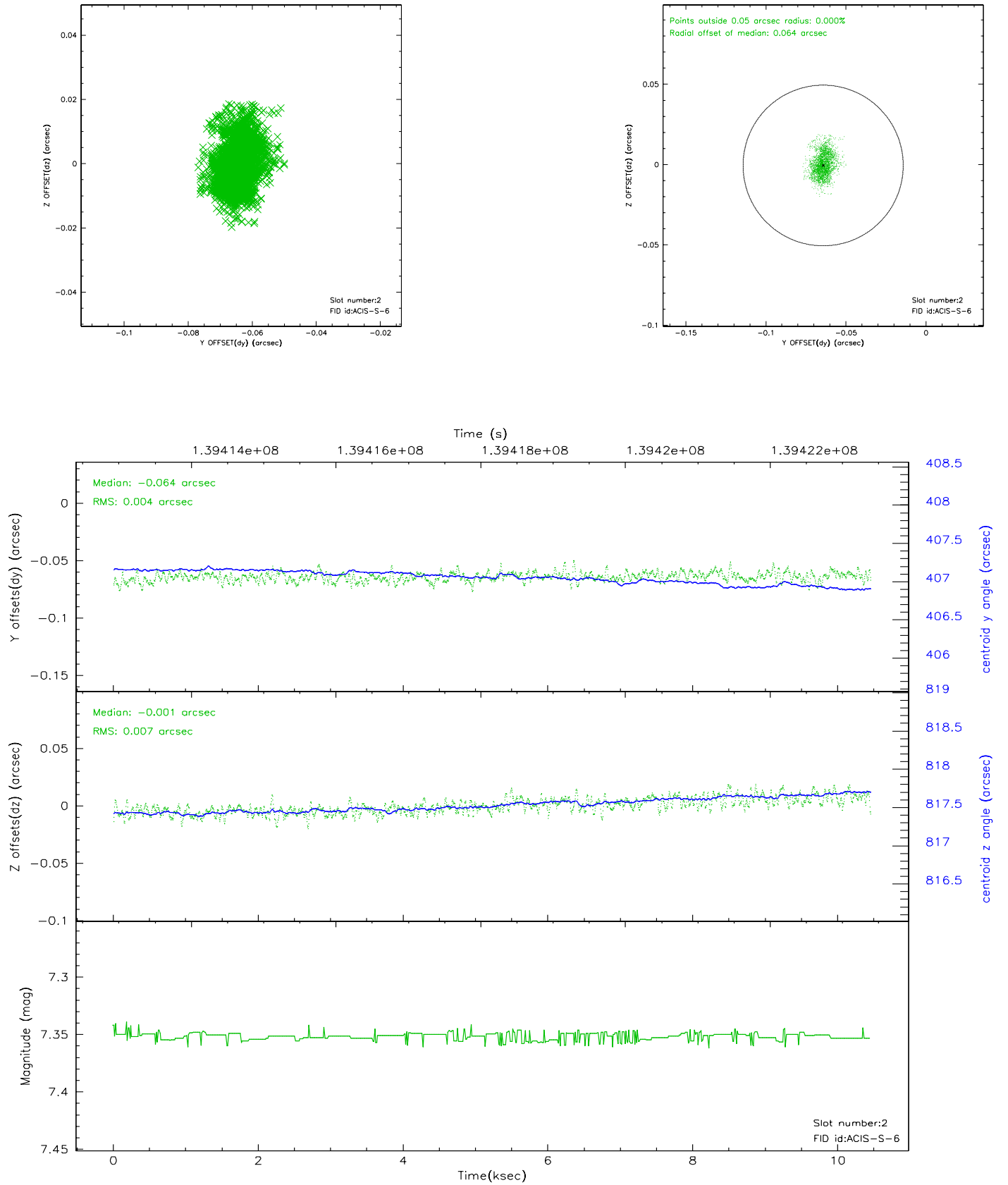
### 2.5.1 Slot 0



## 2.5.2 Slot 1

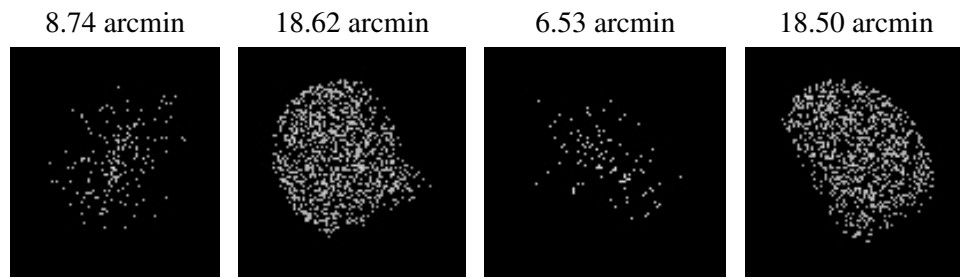


### 2.5.3 Slot 2





### 3 Point Sources



## A Summary

### A.1 Status

V&V Scientist	Jen Lauer
V&V Date (YYYY-MM-DD)	2006.09.18
V&V Edition	1
V&V Disposition and Status	OK
V&V Charge Time	9.961

### A.2 Comments