

V&V Reference Report

L2 ASCDS Version : 8.4.5

Observation 2817 - L2 Version 3
Chandra X-Ray Center

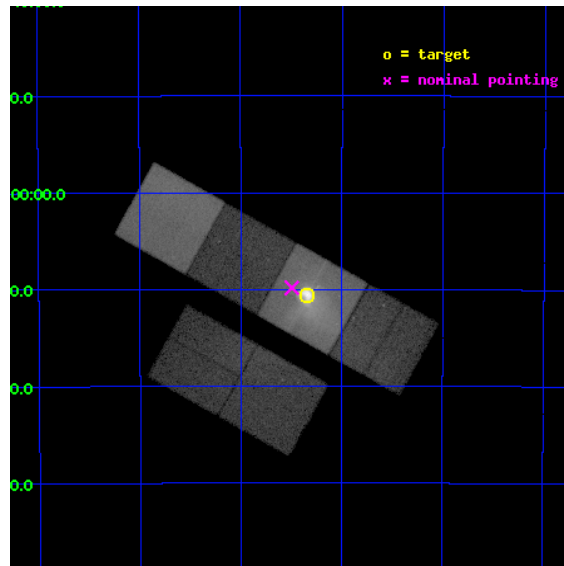
L2 Processing Date : Sep 29 2012

Contents

1	Front	2
2	OBI	3
2.1	OBI	3
2.1.1	Images	3
2.1.2	Bias	3
2.1.3	Parameters	4
2.1.4	Events	4
2.2	Compared Parameters	5
2.3	Aspect	6
2.4	Star Slots	9
2.4.1	Slot 3	9
2.4.2	Slot 4	10
2.4.3	Slot 5	11
2.4.4	Slot 6	12
2.4.5	Slot 7	13
2.5	FID Slots	14
2.5.1	Slot 0	14
2.5.2	Slot 1	15
2.5.3	Slot 2	16
A	Summary	17
A.1	Status	17
A.2	Comments	17

1 Front

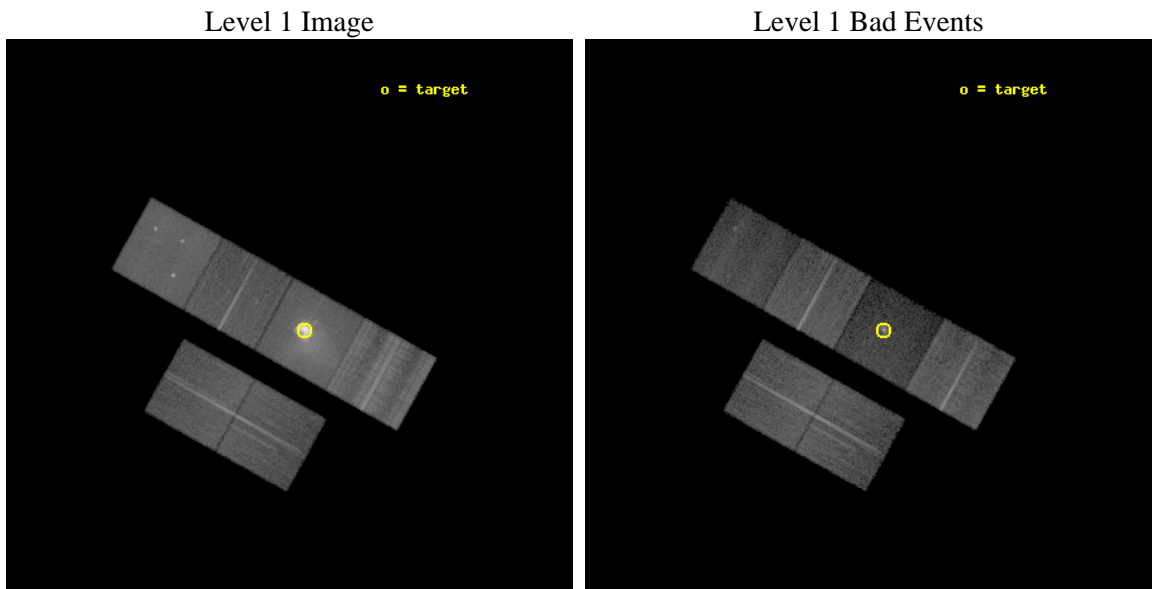
seq_num	500267	Sequence number
obs_id	2817	Observation id
title	THE DYNAMICAL PULSAR-WIND NEBULA IN THE VELA SNR	Proposal title
observer	Dr. George Pavlov	Principal investigator
object	VELA PWN	Source name
dtcycle	0	
cycle	P	events from which exps? Prim/Second/Both
ra_targ	128.83625	Observer's specified target RA [deg]
dec_targ	-45.176667	Observer's specified target Dec [deg]
ra_nom	128.8734980291	Nominal RA [deg]
dec_nom	-45.164057668359	Nominal Dec [deg]
roll_nom	29.156819413092	Nominal Roll [deg]
revision	3	Processing version of data
ontime	19180.800017849	Sum of GTIs [s]
livetime	18937.921178731	Livetime [s]
ontime2	19180.800017849	Sum of GTIs [s]
ontime3	19180.800017849	Sum of GTIs [s]
ontime5	19180.800017849	Sum of GTIs [s]
ontime6	19177.559027672	Sum of GTIs [s]
ontime7	19180.800017849	Sum of GTIs [s]
ontime8	19180.800017849	Sum of GTIs [s]
l2events	632945	Number of level 2 events



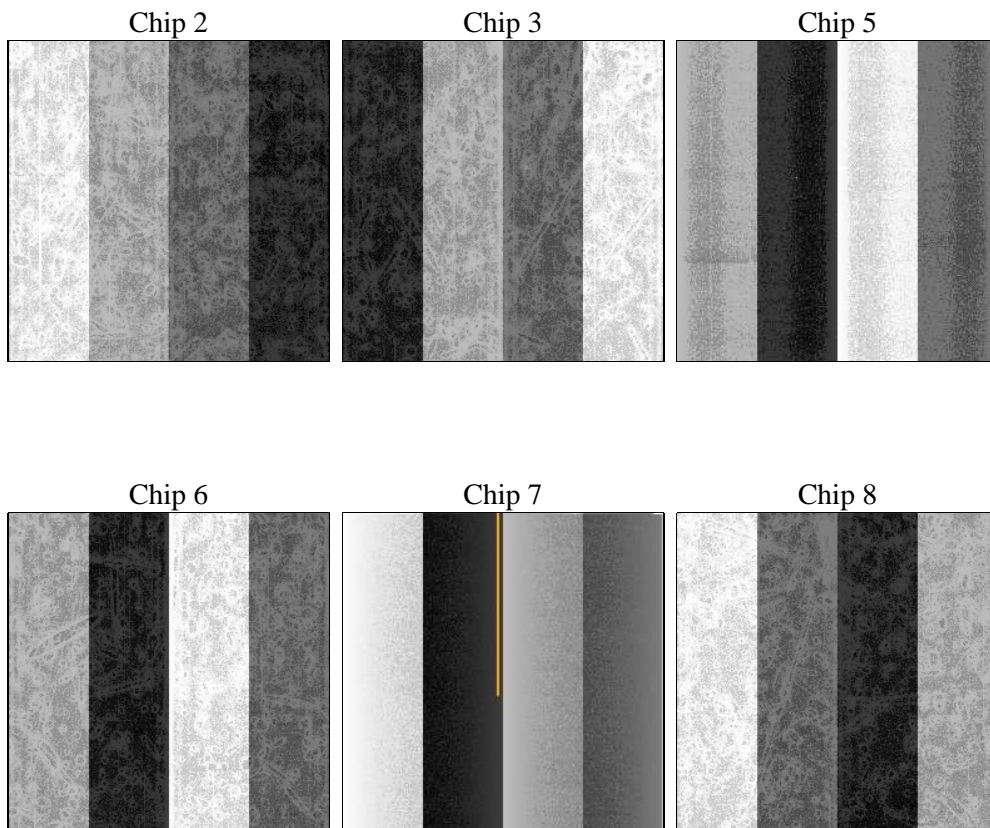
2 OBI

2.1 OBI

2.1.1 Images



2.1.2 Bias



2.1.3 Parameters

obi_num	1	Obi number	sched_exp_time	19000.000000	[s] Scheduled observation exposure time
ascdsver	8.4.5	Processing system revision	ontime	19180.800017849	Sum of GTIs [s]
caldsver	4.5.2	 	ontime2	19180.800017849	Sum of GTIs [s]
date	2012-09-29T15:07:48	Date and time of file creation	ontime3	19180.800017849	Sum of GTIs [s]
revision	3	Processing version of data	ontime5	19180.800017849	Sum of GTIs [s]
			ontime6	19177.559027672	Sum of GTIs [s]
			ontime7	19180.800017849	Sum of GTIs [s]
			ontime8	19180.800017849	Sum of GTIs [s]
			l1events	1367219	Number of level 1 events

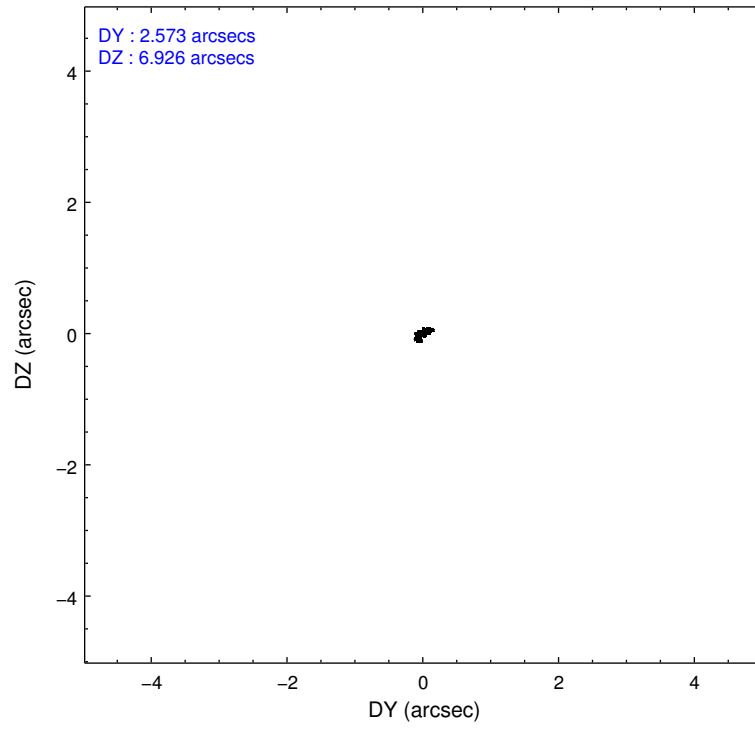
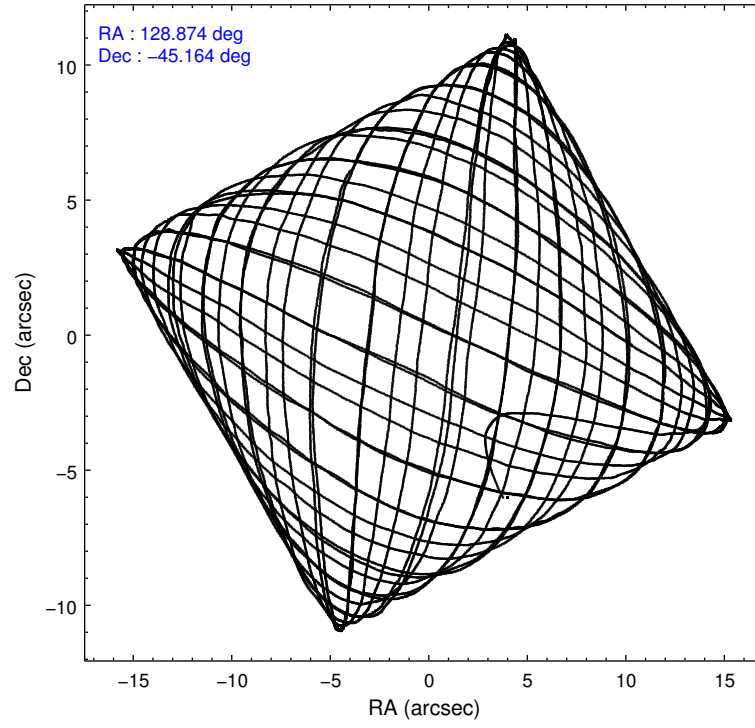
2.1.4 Events

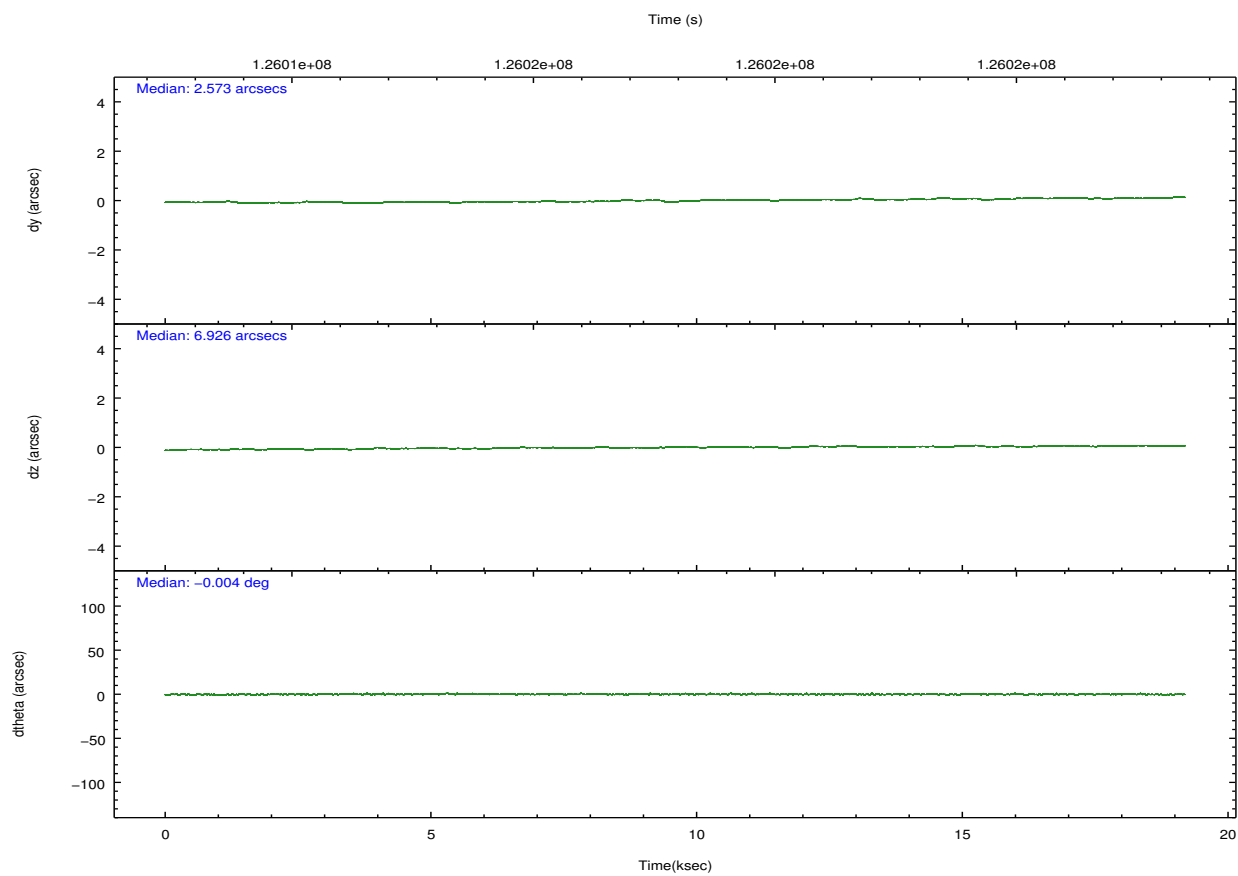
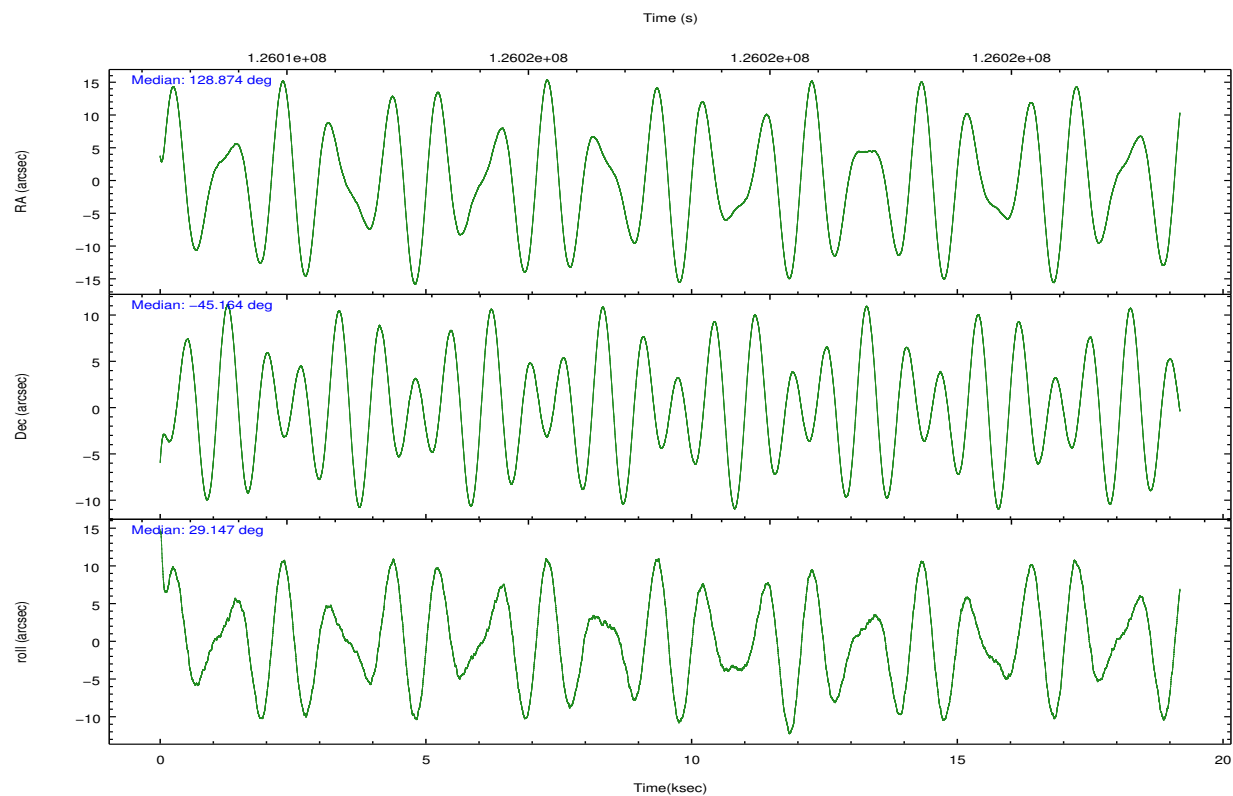
	ccd 2	ccd 3	ccd 5	ccd 6	ccd 7	ccd 8		ccd 2	ccd 3	ccd 5	ccd 6	ccd 7	ccd 8
level 1 events	161170	145318	209641	152964	437978	260148	grade 0 events	24385	24526	47183	26156	117188	56358
rejected events	126280	111565	67067	117090	62599	129953		15%	16%	22%	17%	26%	21%
rejected %	78%	76%	31%	76%	14%	49%	grade 1 events	167	137	362	155	801	372
								0%	0%	0%	0%	0%	0%
							grade 2 events	5515	4211	37852	4969	94193	17928
								3%	2%	18%	3%	21%	6%
							grade 3 events	1550	1690	9579	1654	41445	19116
								0%	1%	4%	1%	9%	7%
							grade 4 events	1869	1609	9383	1737	41334	16621
								1%	1%	4%	1%	9%	6%
							grade 5 events	2814	3128	11289	3358	13407	5813
								1%	2%	5%	2%	3%	2%
							grade 6 events	2417	2391	42412	2568	86072	24065
								1%	1%	20%	1%	19%	9%
							grade 7 events	122453	107626	51581	112367	43538	119875
								75%	74%	24%	73%	9%	46%

2.2 Compared Parameters

Parameter	Planned	Actual	Parameter	Planned	Actual
Instrument	ACIS	ACIS	Obspar format version number	7	7
Detector	ACIS-235678	ACIS-235678	Obspar file type	PREDICTED	ACTUAL
Grating	NONE	NONE	Obspar update status	NONE	UPDATED
Data mode	FAINT	FAINT	Number of optional ACIS chips dropped	0	0
Observation mode	POINTING	POINTING	On-chip summing requested	N	N
[deg] Pointing RA	128.854047	128.873498029097	Subarray requested	NONE	NONE
[deg] Pointing Dec	-45.187632	-45.1640576683586	Alternating exposures requested	N	N
[deg] Pointing Roll	28.986384	29.15681941309235	[s] Primary exposure time	0.000000	3.2
[mm] SIM focus pos	-0.684267	-0.6828225247311905			
[mm] SIM defocus	0	0.001444936568705701			
[mm] SIM translation stage pos	-190.132523	-190.1400660498719			
[mm] SIM translation stage offset	0	0.00754346686406393			
[s] Observation start time (MET)	126008526.184000	126007174.10287			
Observation start date	2001-12-29T10:21:02	2001-12-29T09:59:34			
[s] Observation end time (MET)	126027526.184000	126028206.07872			
Observation end date	2001-12-29T15:37:42	2001-12-29T15:50:06			
Read mode	TIMED	TIMED			

2.3 Aspect



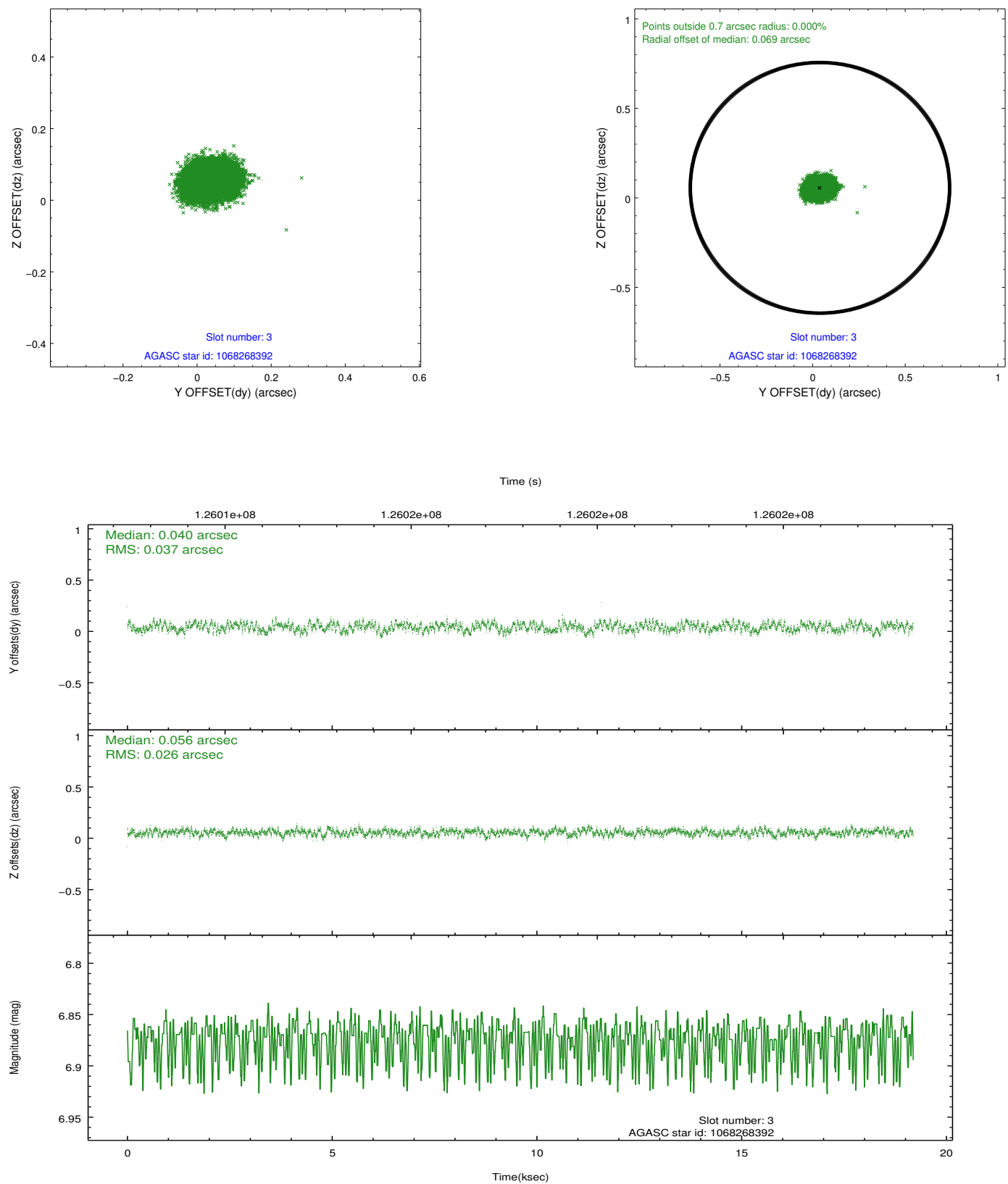


Slot Statistics

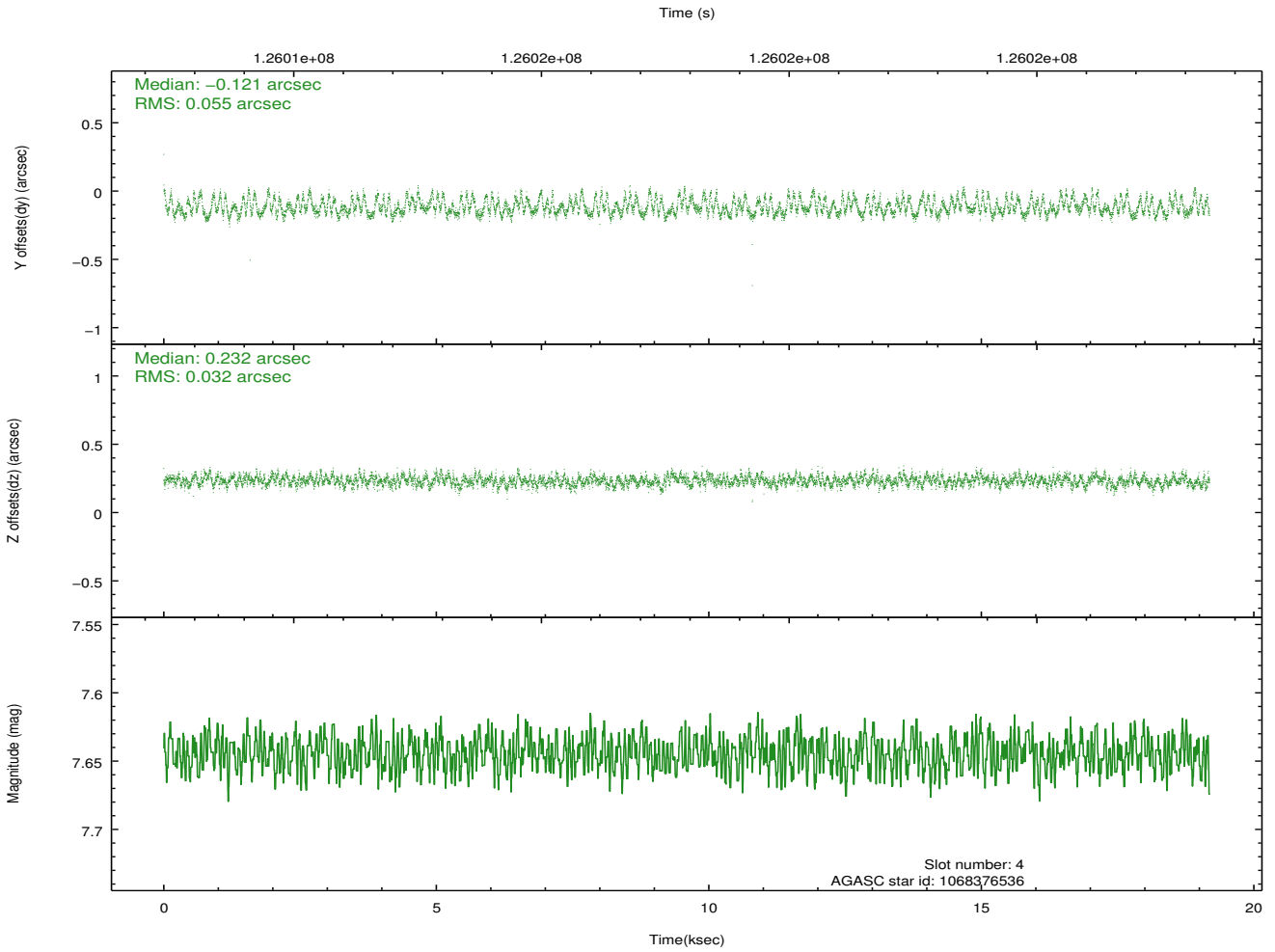
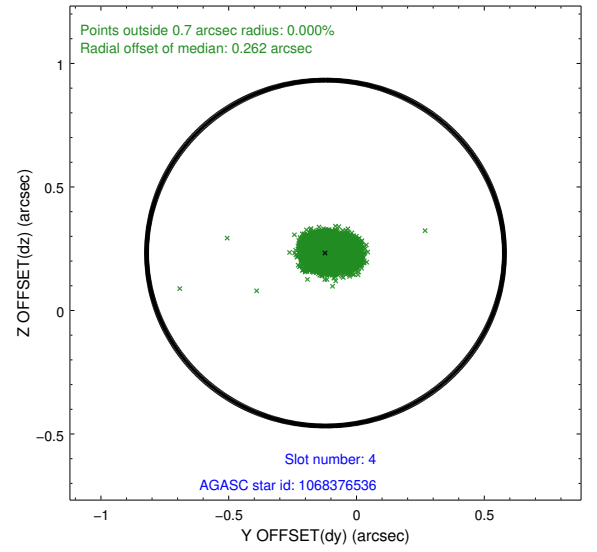
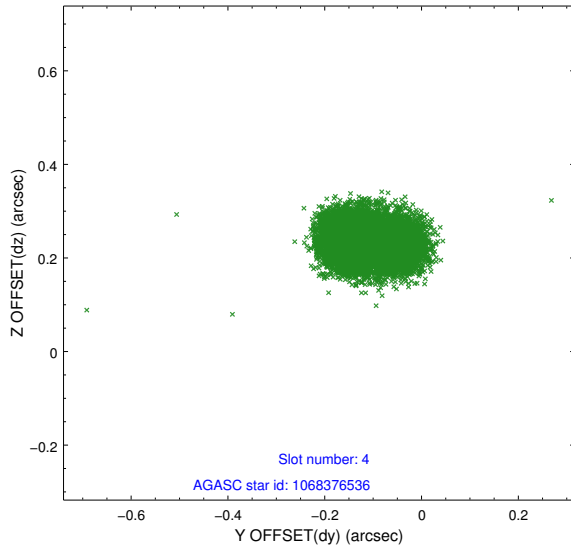
slot	status	id	mag	n_pts	med_dy	med_dz	dr1	dr2	ra	dec	mean_y	mean_z
0	FID	ACIS-S-1	7.19	4680	0.018	-0.051	0.007	0.012	0.000000	0.000000	940.82	-1723.78
1	FID	ACIS-S-5	7.24	4678	0.009	0.024	0.007	0.012	0.000000	0.000000	-1808.04	173.70
2	FID	ACIS-S-6	7.35	4679	-0.048	0.039	0.007	0.011	0.000000	0.000000	406.14	817.86
3	GUIDE	1068268392	6.87	9358	0.040	0.056	0.049	0.076	128.257754	-45.752904	-2299.20	-1059.78
4	GUIDE	1068376536	7.64	9358	-0.121	0.232	0.068	0.109	129.556408	-45.593502	835.54	-2142.31
5	GUIDE	1005871784	8.00	9356	-0.021	-0.199	0.069	0.109	128.533947	-44.544833	401.53	2420.07
6	GUIDE	1005861048	8.41	9360	-0.012	-0.155	0.074	0.119	128.669106	-44.528323	734.08	2305.63
7	GUIDE	1068399176	9.10	9357	0.113	0.065	0.072	0.120	129.539137	-45.338406	1249.93	-1321.17

2.4 Star Slots

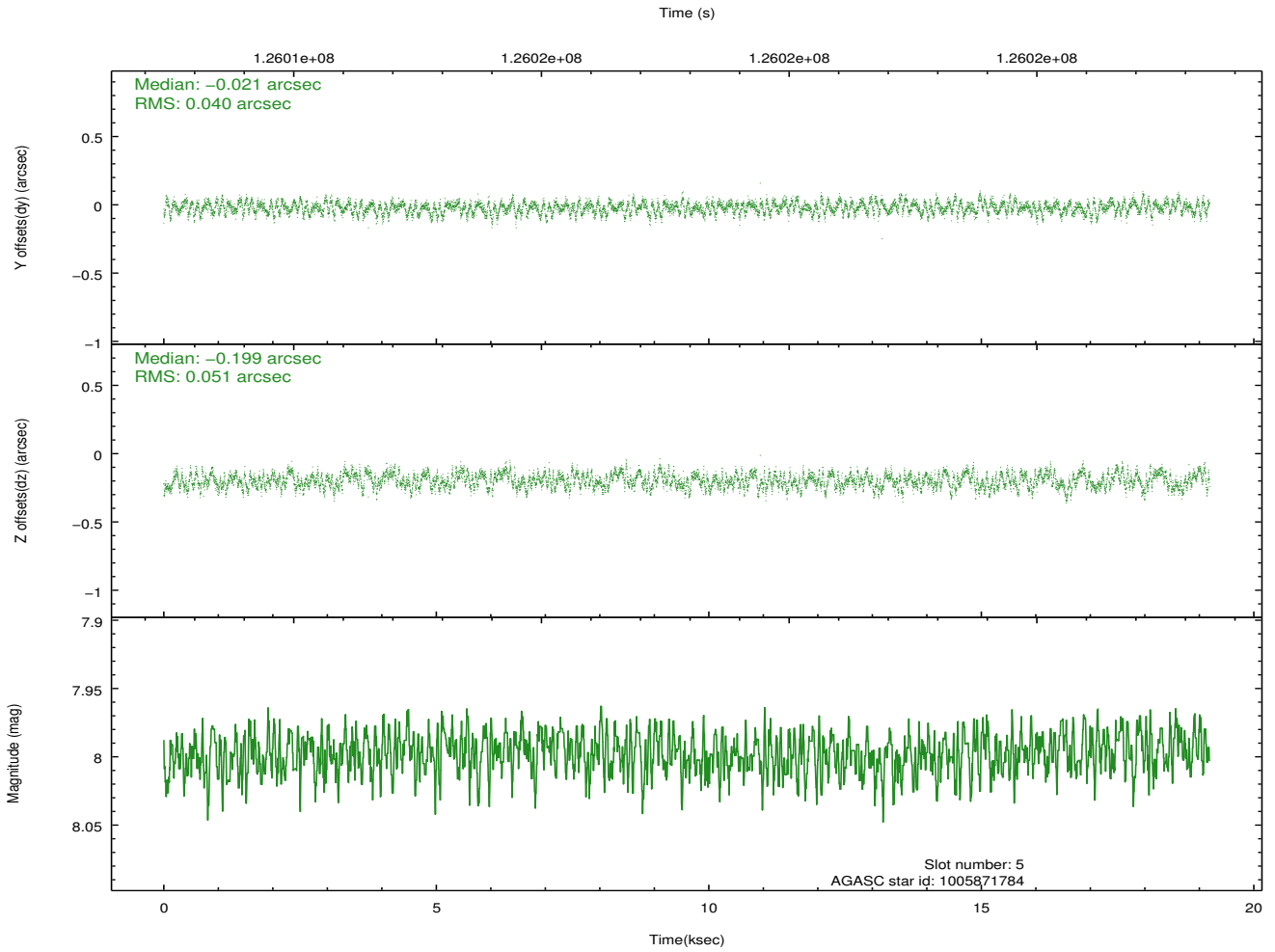
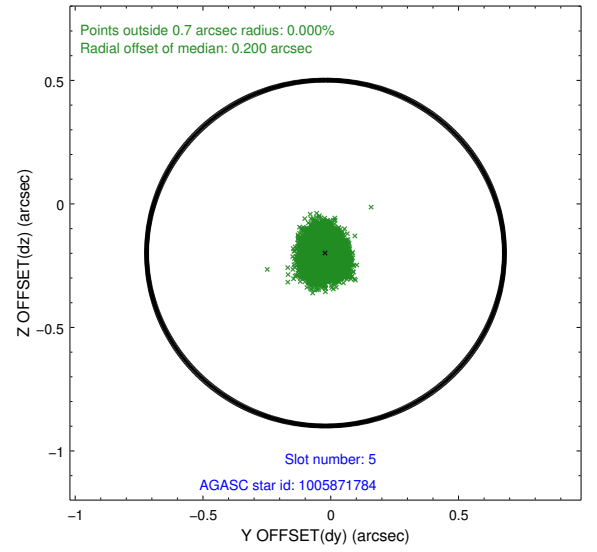
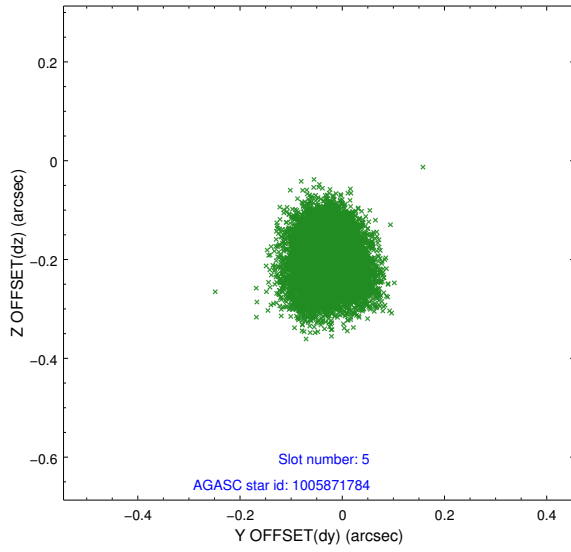
2.4.1 Slot 3



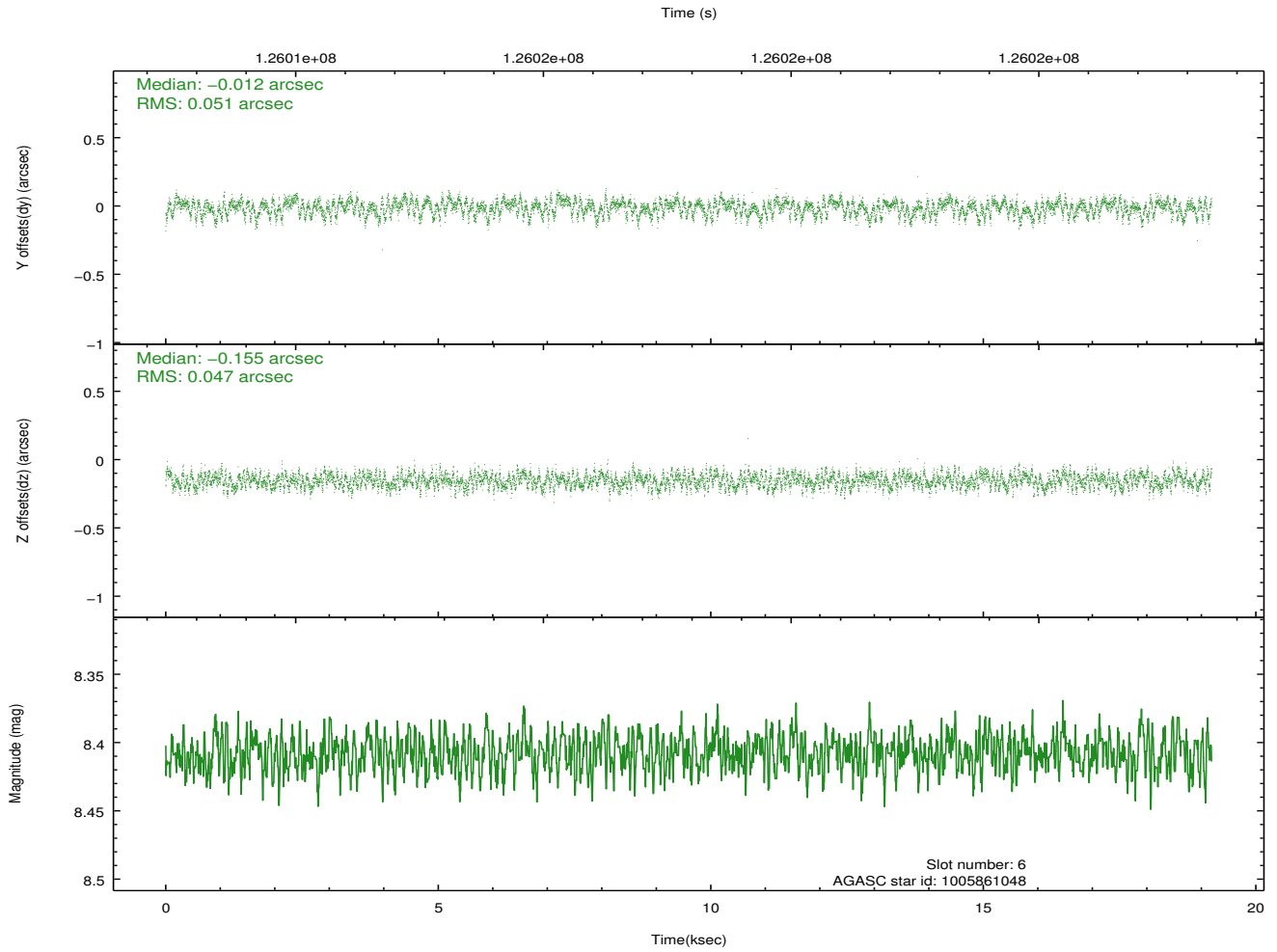
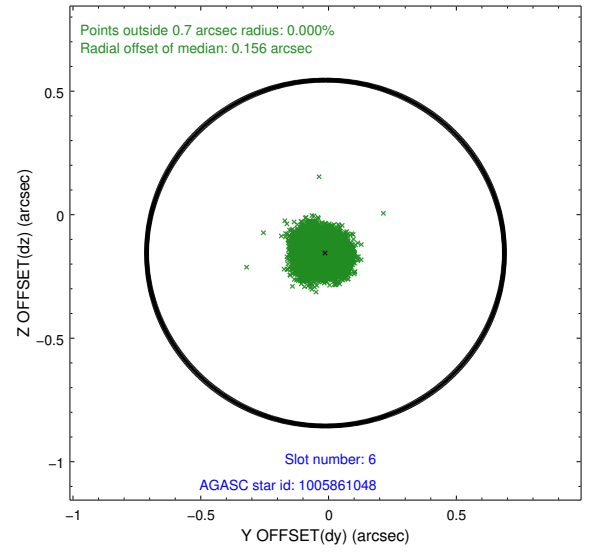
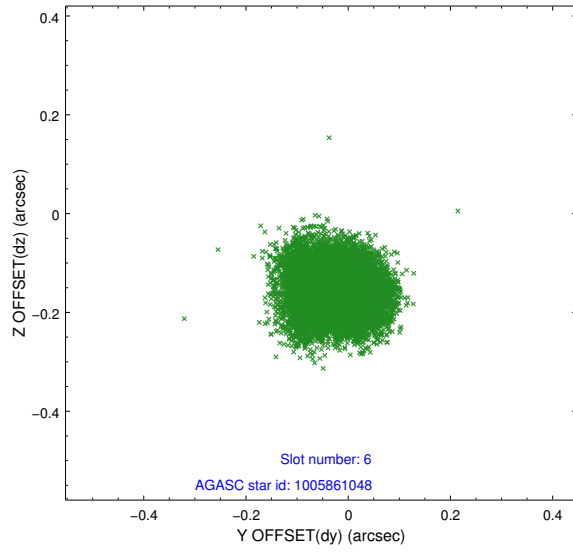
2.4.2 Slot 4



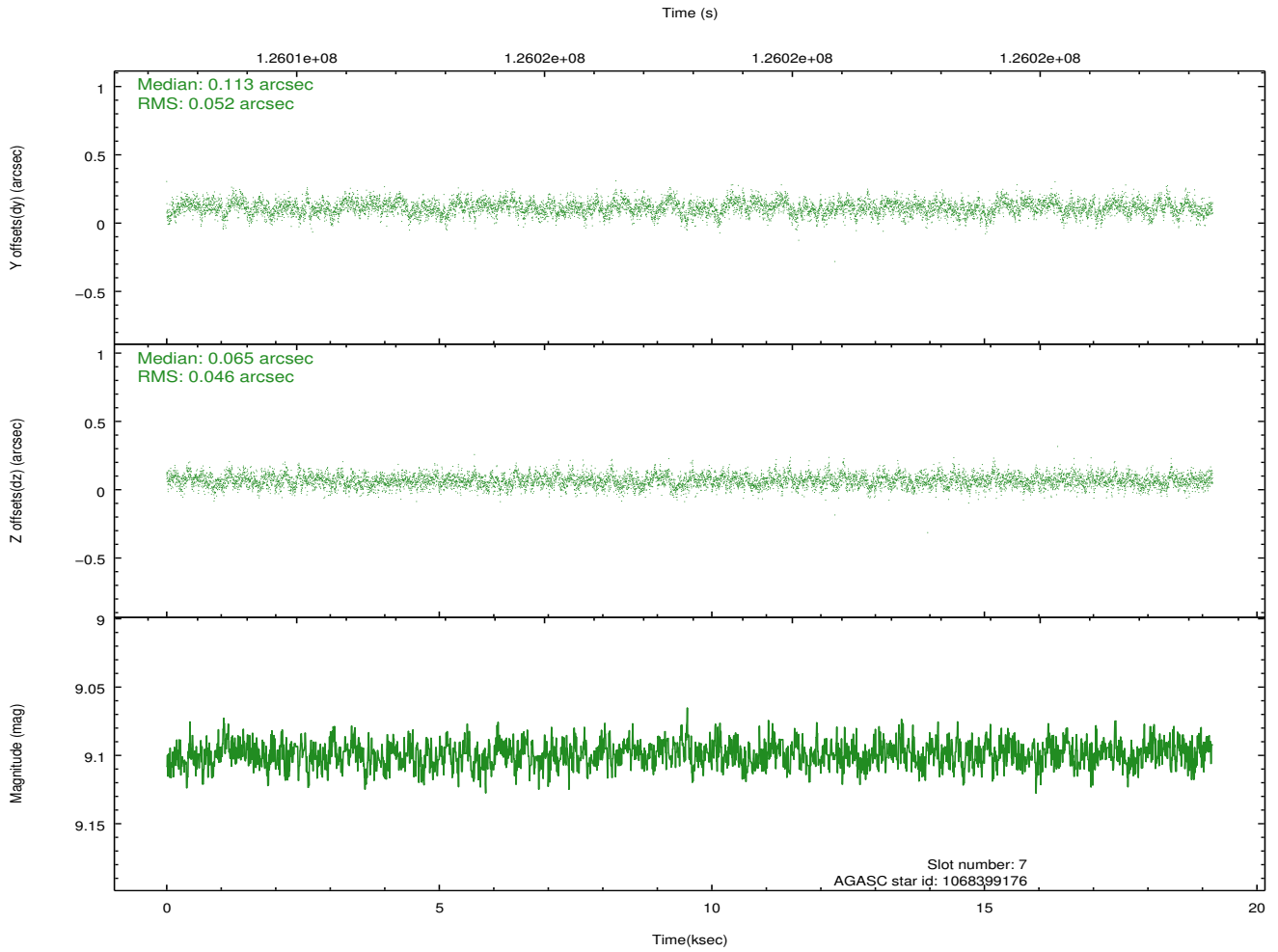
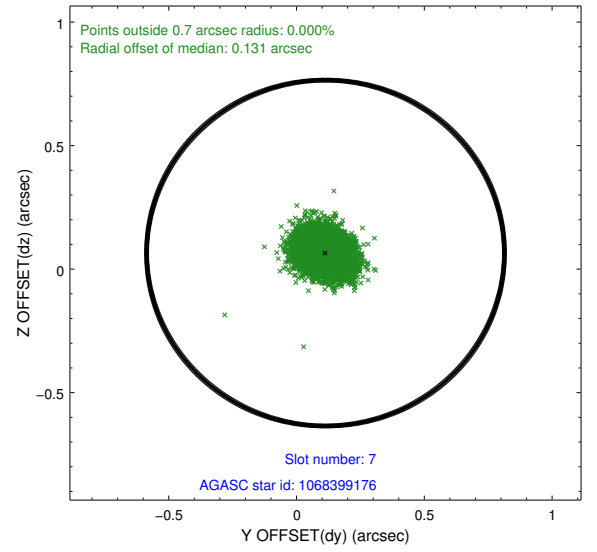
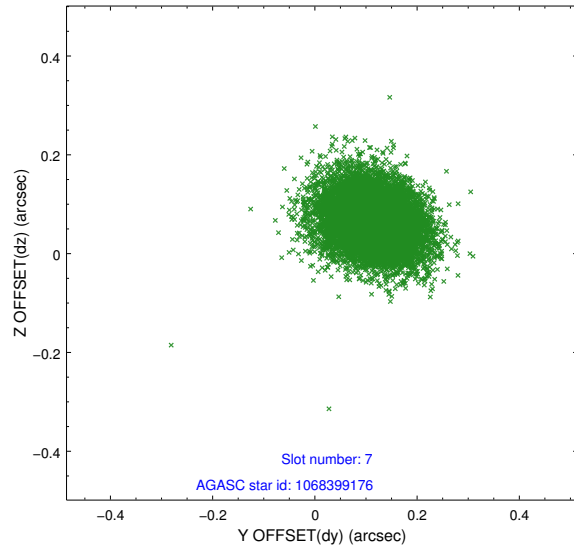
2.4.3 Slot 5



2.4.4 Slot 6

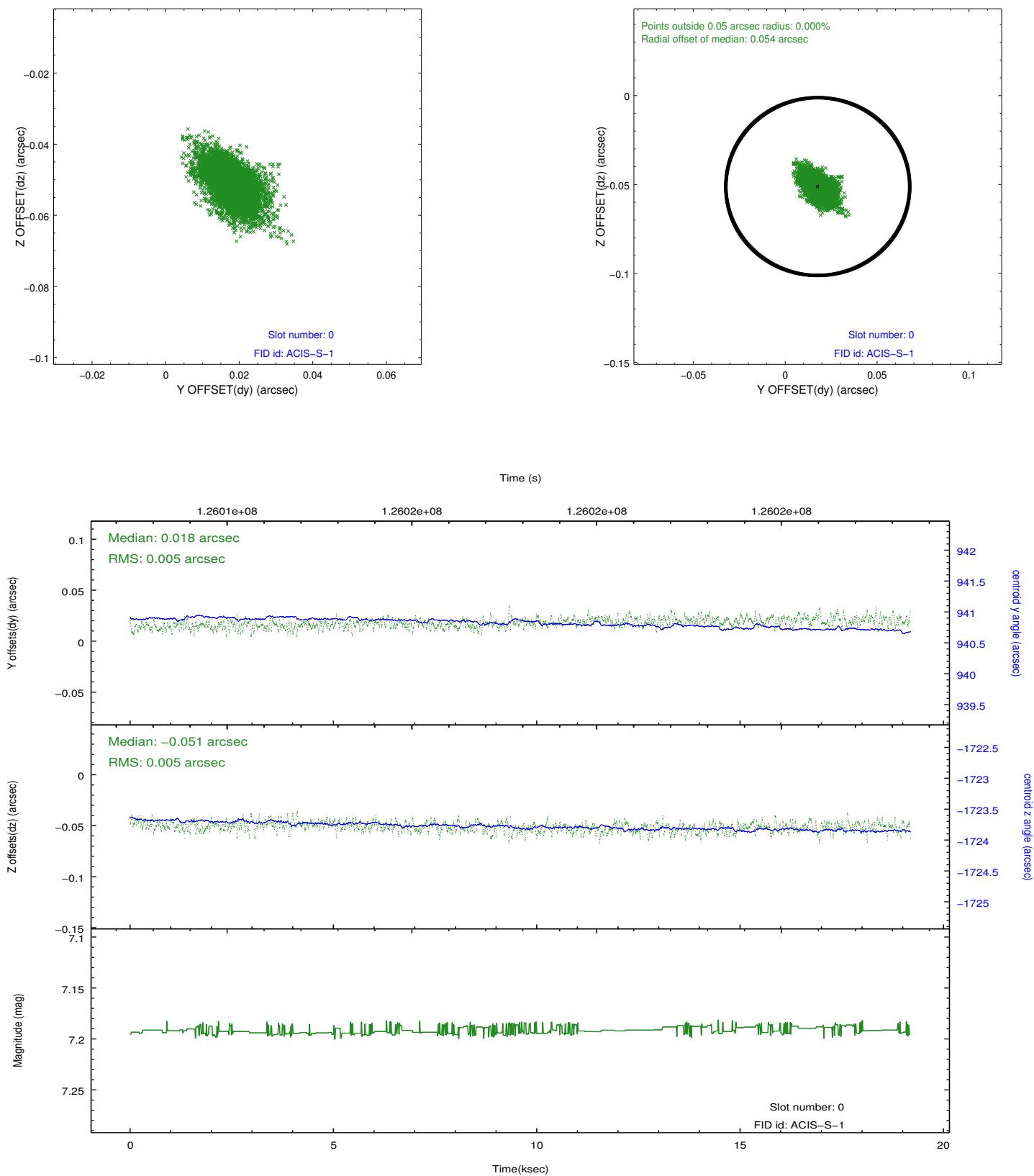


2.4.5 Slot 7

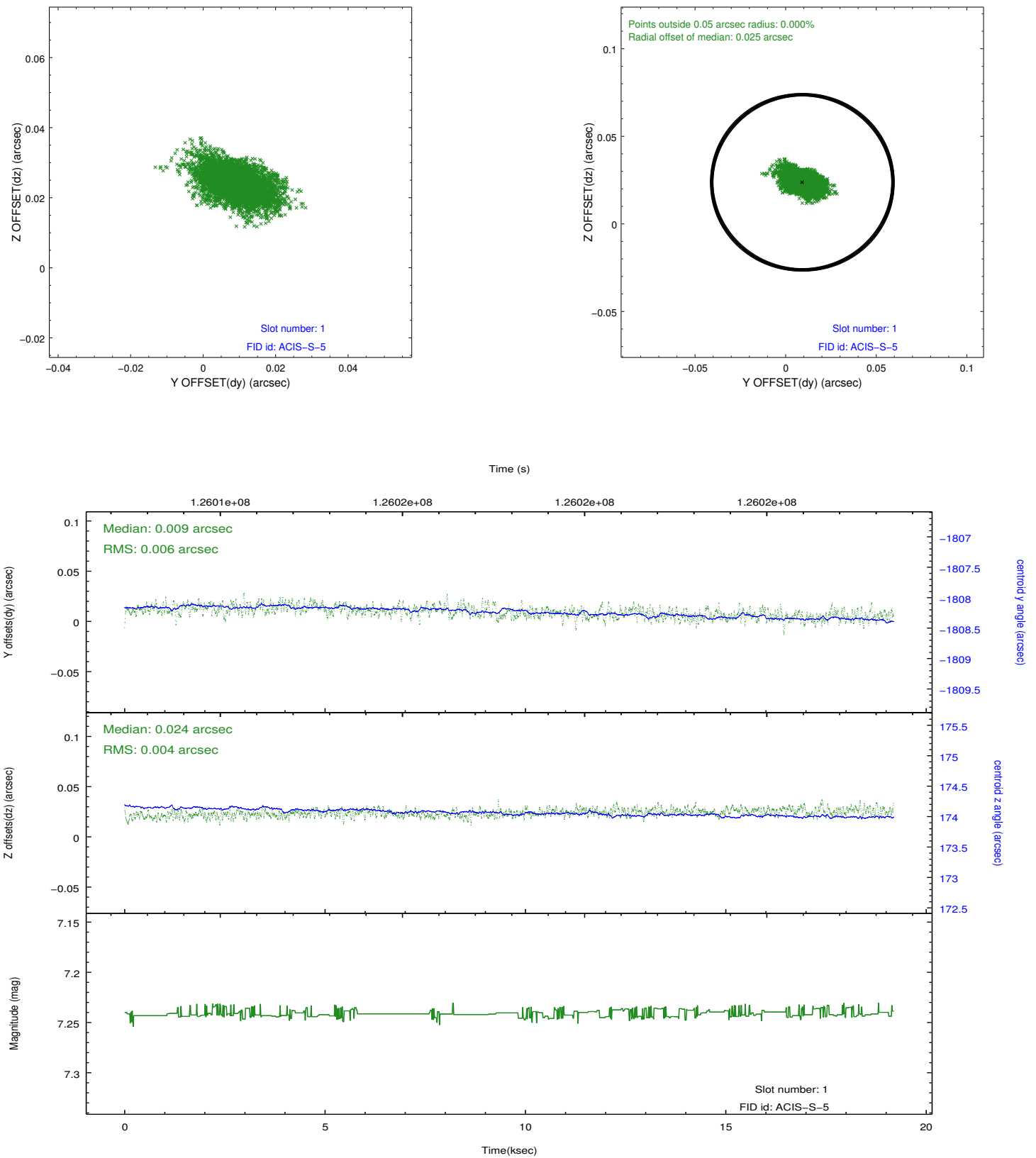


2.5 FID Slots

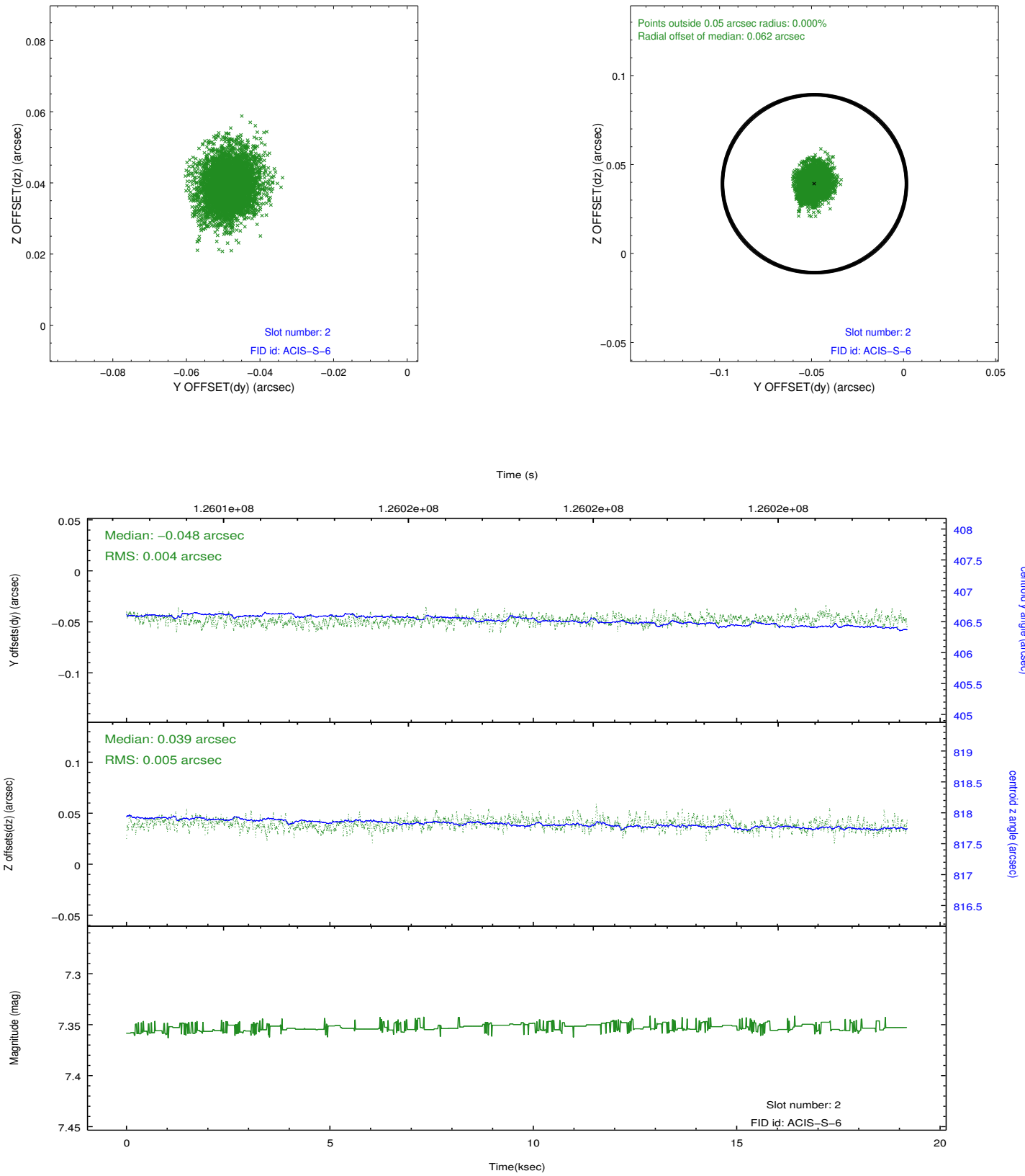
2.5.1 Slot 0



2.5.2 Slot 1



2.5.3 Slot 2



A Summary

A.1 Status

V&V Scientist	Jen Lauer
V&V Date (YYYY-MM-DD)	2012.10.01
V&V Edition	1
V&V Disposition and Status	OK
V&V Charge Time	19.18

A.2 Comments