

# V&V Reference Report

## L2 ASCDS Version : 8.4.5

Observation 2137 - L2 Version 3  
Chandra X-Ray Center

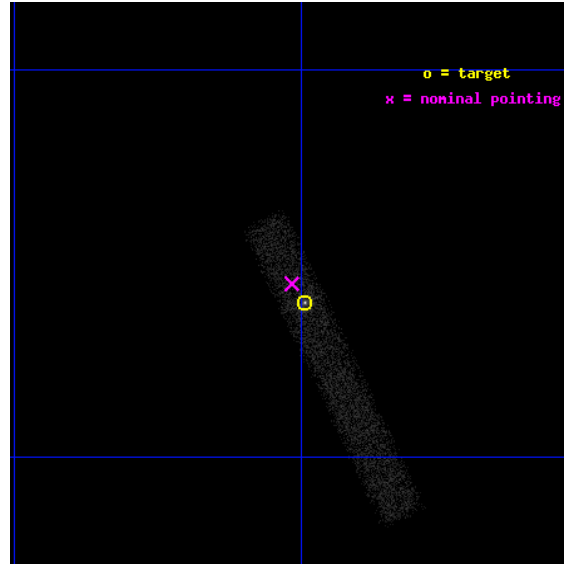
L2 Processing Date : Sep 6 2012

## Contents

<b>1</b>	<b>Front</b>	<b>2</b>
<b>2</b>	<b>OBI</b>	<b>3</b>
2.1	OBI . . . . .	3
2.1.1	Images . . . . .	3
2.1.2	Bias . . . . .	3
2.1.3	Parameters . . . . .	4
2.1.4	Events . . . . .	4
2.2	Compared Parameters . . . . .	5
2.3	Aspect . . . . .	6
2.4	Star Slots . . . . .	9
2.4.1	Slot 3 . . . . .	9
2.4.2	Slot 4 . . . . .	10
2.4.3	Slot 5 . . . . .	11
2.4.4	Slot 6 . . . . .	12
2.4.5	Slot 7 . . . . .	13
2.5	FID Slots . . . . .	14
2.5.1	Slot 0 . . . . .	14
2.5.2	Slot 1 . . . . .	15
2.5.3	Slot 2 . . . . .	16
<b>A</b>	<b>Summary</b>	<b>17</b>
A.1	Status . . . . .	17
A.2	Comments . . . . .	17

# 1 Front

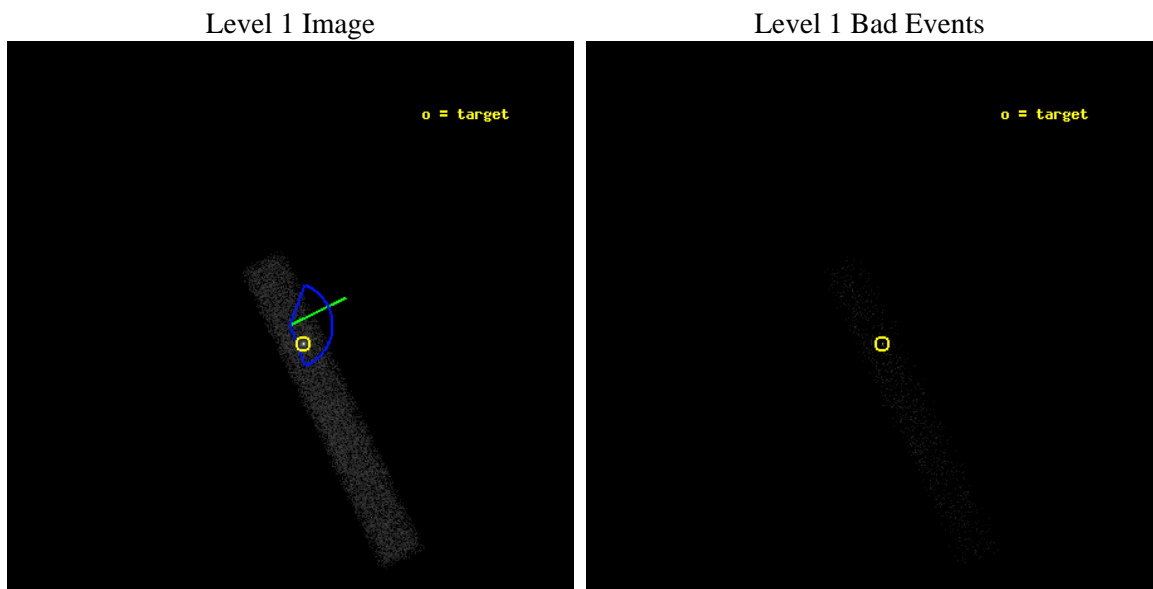
seq_num	700327	Sequence number
obs_id	2137	Observation id
title	AN UNBIASED SURVEY OF X-RAY AND OPTICAL EMISSION FROM EXTENDED RADIO JETS IN AGN	Proposal title
observer	Dr. Rita Sambruna	Principal investigator
object	1055+018	Source name
dtcycle	0	&#160
cycle	P	events from which exps? Prim/Second/Both
ra_targ	164.623333	Observer's specified target RA [deg]
dec_targ	1.566389	Observer's specified target Dec [deg]
ra_nom	164.62913505812	Nominal RA [deg]
dec_nom	1.5743843718131	Nominal Dec [deg]
roll_nom	64.389515886929	Nominal Roll [deg]
revision	3	Processing version of data
ontime	10270.000153035	Sum of GTIs [s]
livetime	9314.3480437466	Livetime [s]
ontime7	10270.000153035	Sum of GTIs [s]
l2events	14322	Number of level 2 events



## 2 OBI

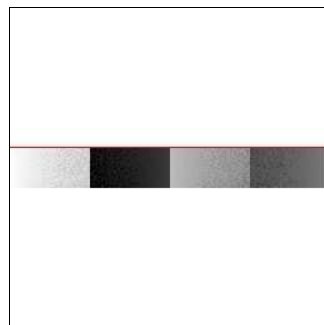
### 2.1 OBI

#### 2.1.1 Images



#### 2.1.2 Bias

Chip 7



### 2.1.3 Parameters

obi_num	0	Obi number	sched_exp_time	9800.000000	[s] Scheduled observation exposure time
ascdsver	8.4.5	Processing system revision	ontime	10270.000153035	Sum of GTIs [s]
caldsver	4.5.1.1	&#160	ontime7	10270.000153035	Sum of GTIs [s]
date	2012-09-06T09:26:22	Date and time of file creation	l1events	21298	Number of level 1 events
revision	3	Processing version of data			

### 2.1.4 Events

	<b>ccd 7</b>
level 1 events	21298
rejected events	6715
rejected %	31%

	<b>ccd 7</b>
grade 0 events	3124
	14%
grade 1 events	57
	0%
grade 2 events	3320
	15%
grade 3 events	1730
	8%
grade 4 events	1634
	7%
grade 5 events	1241
	5%
grade 6 events	5254
	24%
grade 7 events	4938
	23%

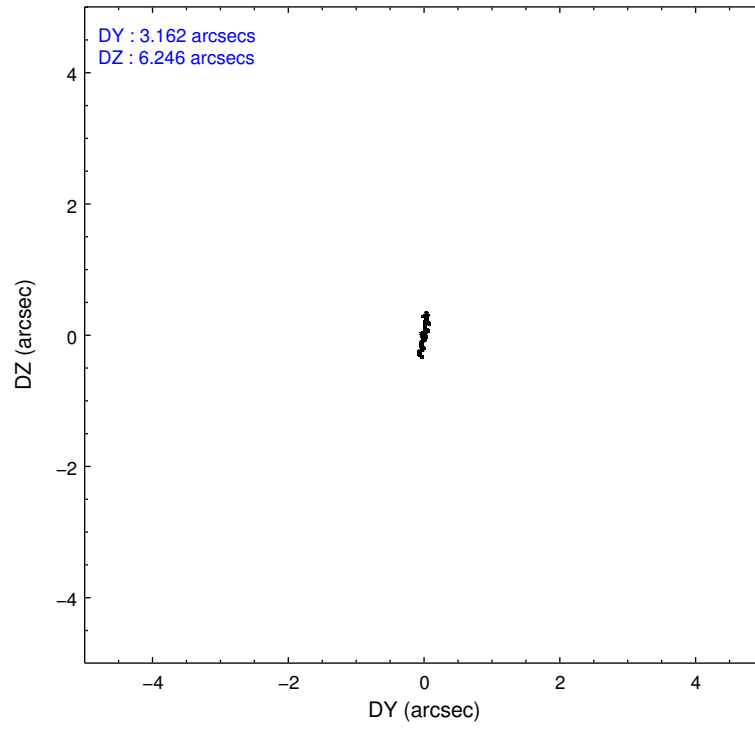
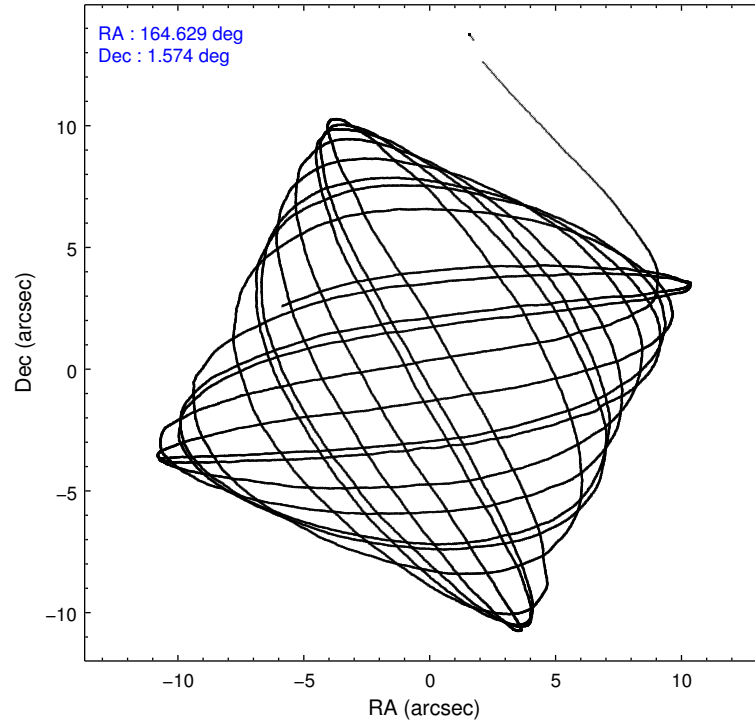


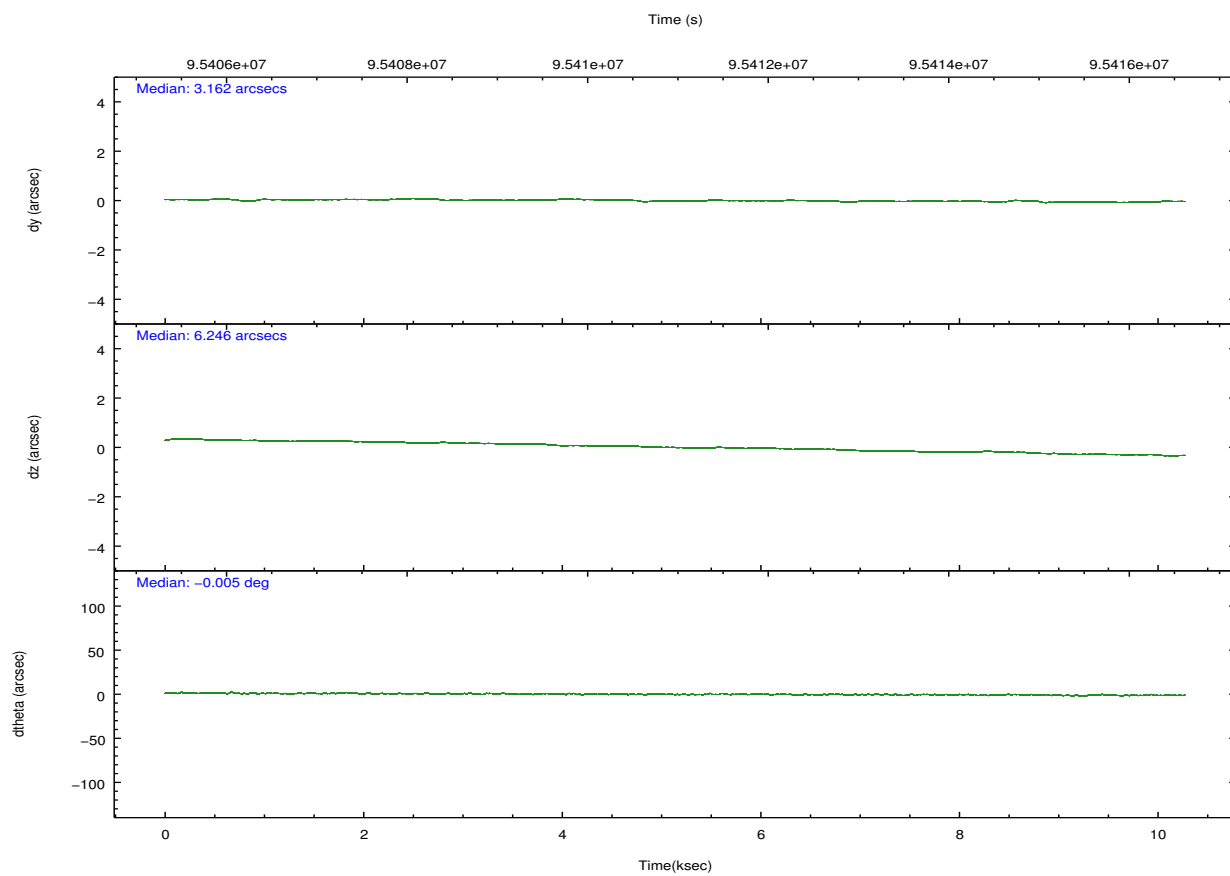
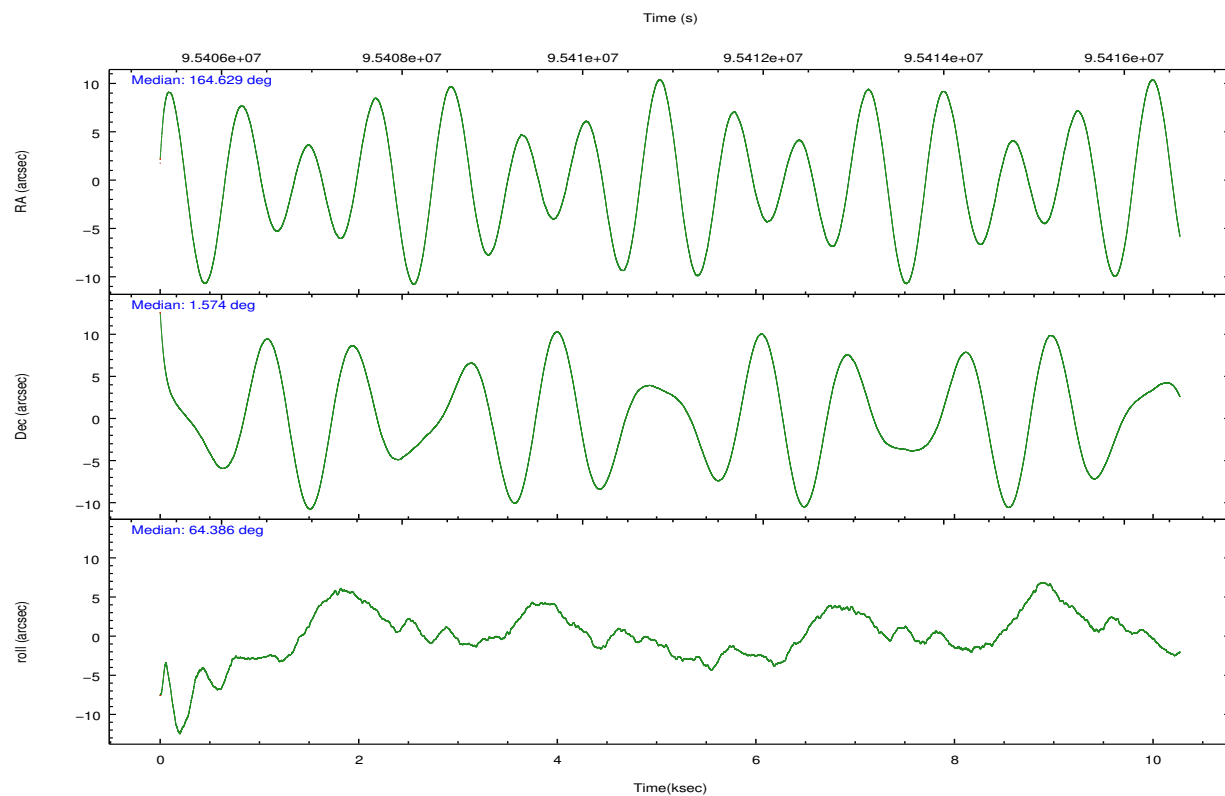
## 2.2 Compared Parameters

Parameter	Planned	Actual
Instrument	ACIS	ACIS
Detector	ACIS-7	ACIS-7
Grating	NONE	NONE
Data mode	FAINT	FAINT
Observation mode	POINTING	POINTING
[deg] Pointing RA	164.631432	164.6291350581223
[deg] Pointing Dec	1.547116	1.574384371813079
[deg] Pointing Roll	64.232819	64.38951588692942
[deg] Roll angle	90.000000	90.000000
[deg] Roll tolerance	69.000000	69.000000
Roll constraint allows 180D rotation	N	N
[mm] SIM focus pos	-0.684267	-0.6828225247311905
[mm] SIM defocus	0	0.001444936568705701
[mm] SIM translation stage pos	-190.132523	-190.1425803651734
[mm] SIM translation stage offset	0	0.01005778216563158
[s] Observation start time (MET)	95406304.184000	95405201.353522
Observation start date	2001-01-09T05:44:00	2001-01-09T05:26:41
[s] Observation end time (MET)	95416104.184000	95417154.39148
Observation end date	2001-01-09T08:27:20	2001-01-09T08:45:54
Read mode	TIMED	TIMED

Parameter	Planned	Actual
Obspar format version number	7	7
Obspar file type	PREDICTED	ACTUAL
Obspar update status	NONE	UPDATED
Number of optional ACIS chips dropped	0	0
On-chip summing requested	N	N
Subarray requested	CUSTOM	1/8
Subarray start row	449	449
Subarray row count	128	128
Alternating exposures requested	N	N
[s] Primary exposure time	0.000000	0.4

## 2.3 Aspect



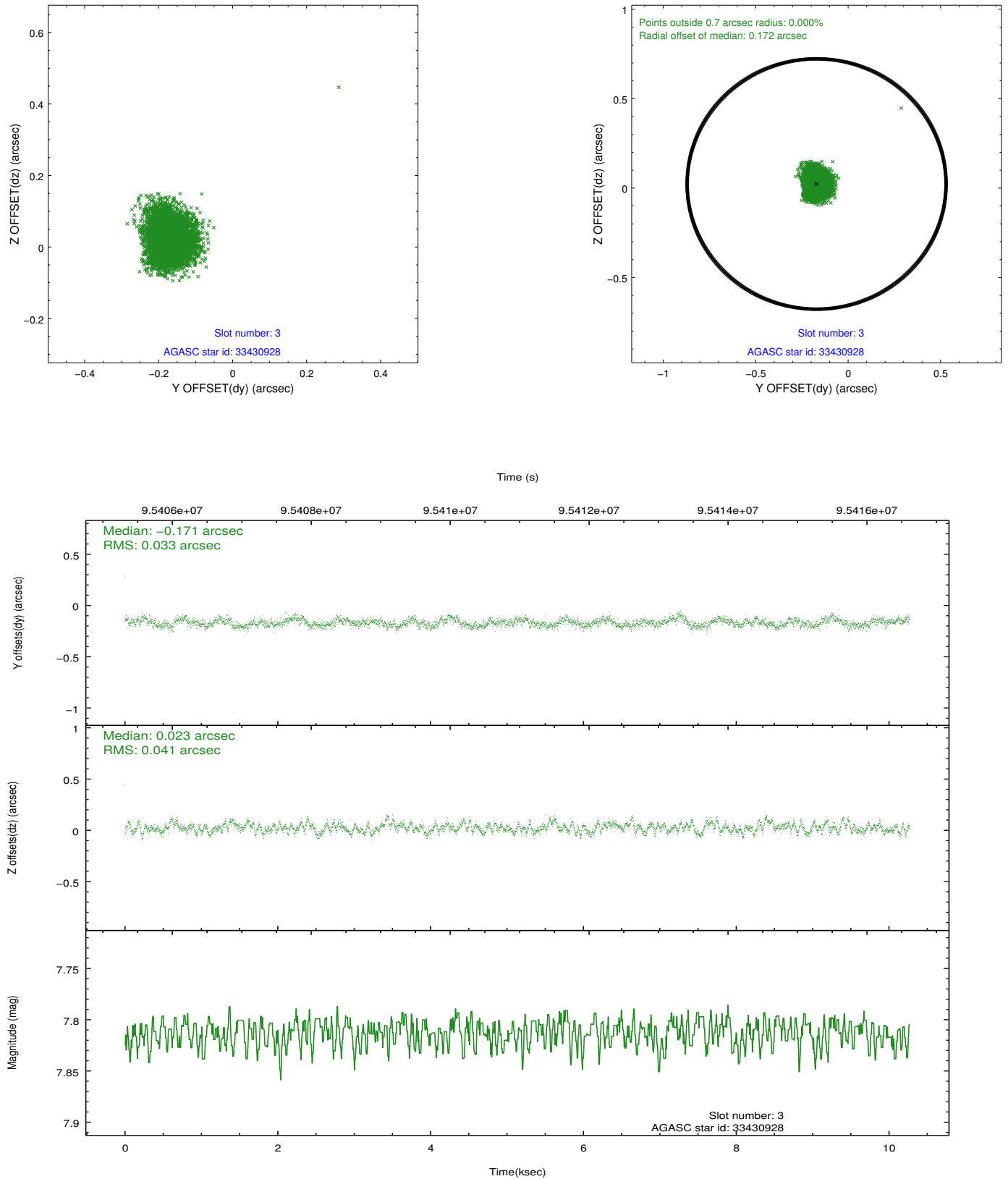


### Slot Statistics

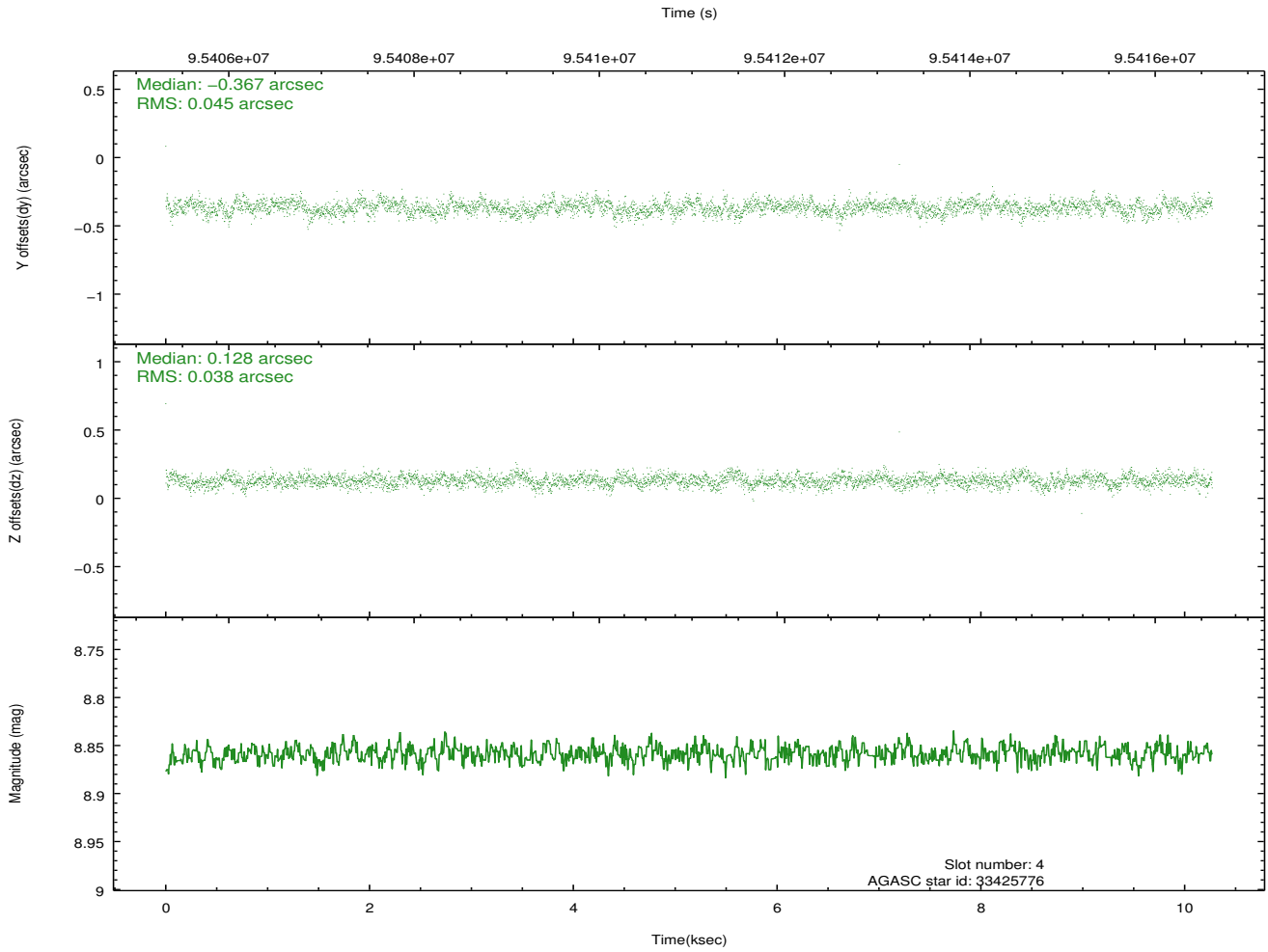
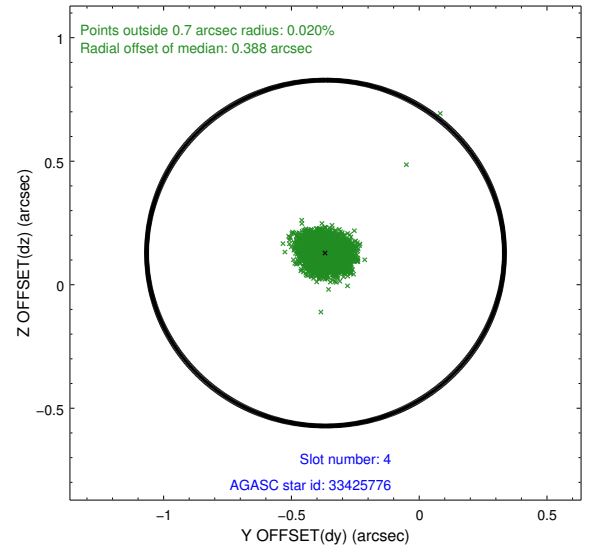
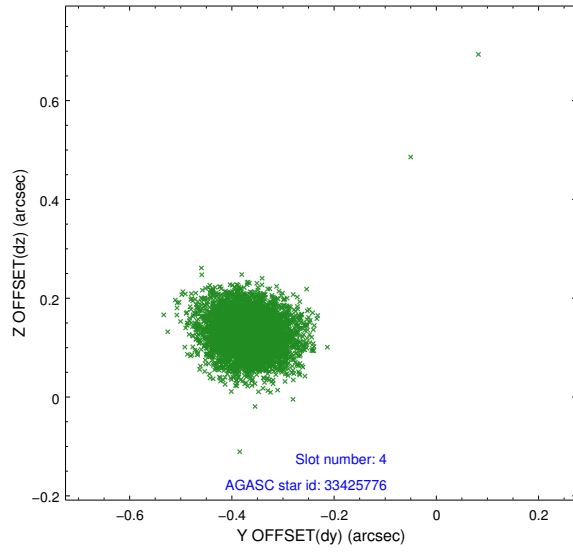
slot	status	id	mag	n_pts	med_dy	med_dz	dr1	dr2	ra	dec	mean_y	mean_z
0	FID	ACIS-S-1	7.19	2506	0.003	-0.047	0.013	0.020	0.000000	0.000000	940.22	-1723.03
1	FID	ACIS-S-5	7.24	2506	0.002	0.006	0.008	0.012	0.000000	0.000000	-1808.47	174.07
2	FID	ACIS-S-6	7.35	2506	-0.027	0.052	0.009	0.014	0.000000	0.000000	405.21	818.64
3	GUIDE	33430928	7.81	5011	-0.171	0.023	0.055	0.089	164.698903	1.729219	695.39	66.68
4	GUIDE	33425776	8.86	5011	-0.367	0.128	0.061	0.101	164.749355	2.195075	2284.55	632.57
5	GUIDE	33429488	9.52	5004	0.005	0.355	0.095	0.154	164.948285	1.078555	-1023.00	-1759.66
6	GUIDE	33431256	9.37	5010	0.445	-0.467	0.081	0.135	164.194963	1.515001	-786.99	1363.78
7	GUIDE	33431792	10.21	5007	0.087	-0.037	0.127	0.206	164.225936	1.063093	-2204.04	557.35

## 2.4 Star Slots

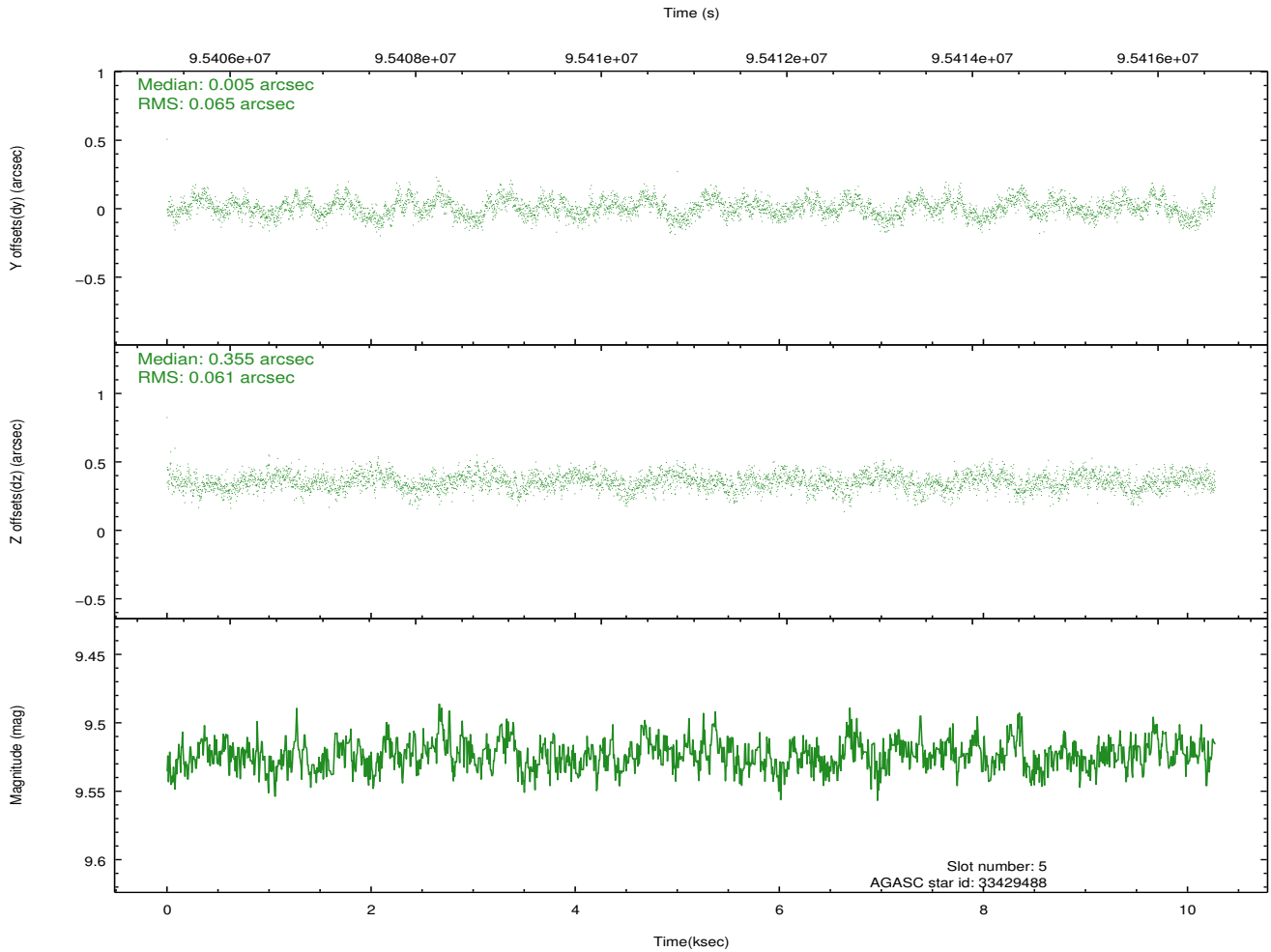
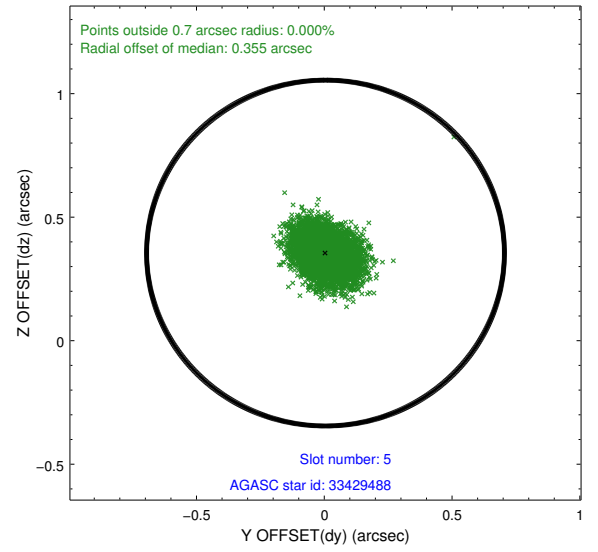
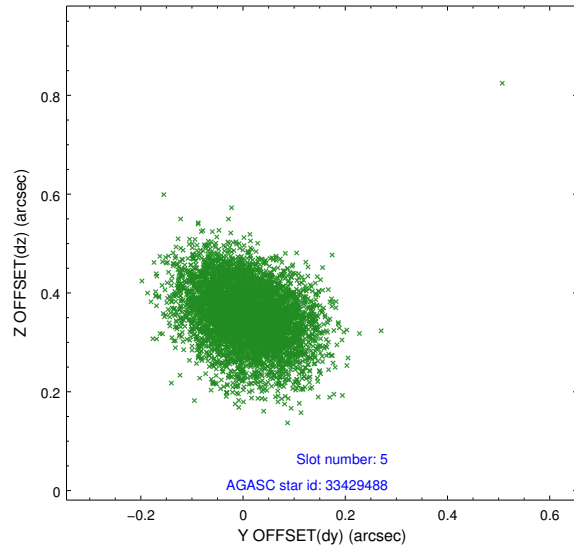
### 2.4.1 Slot 3



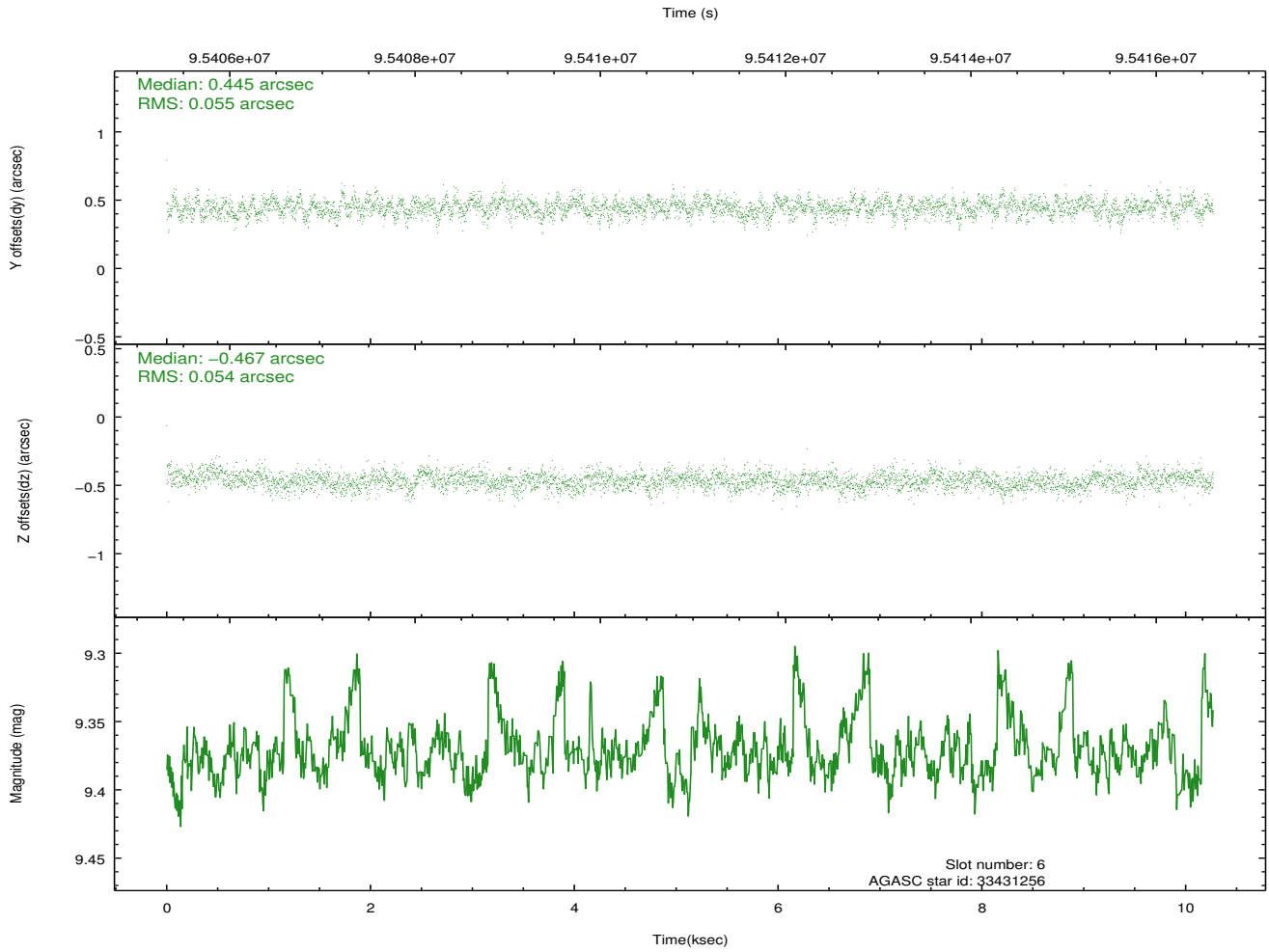
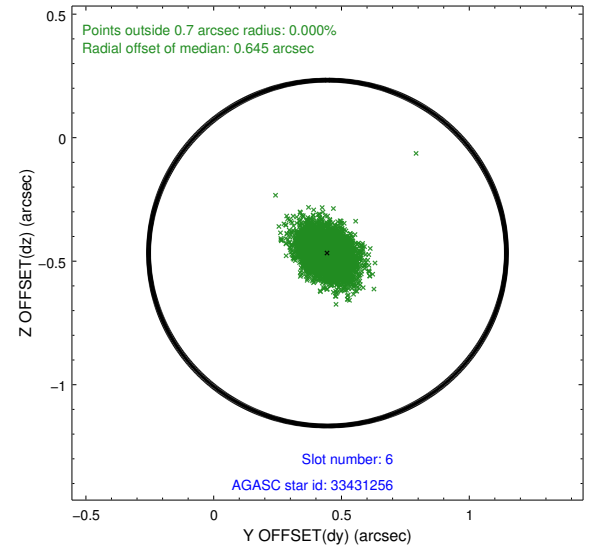
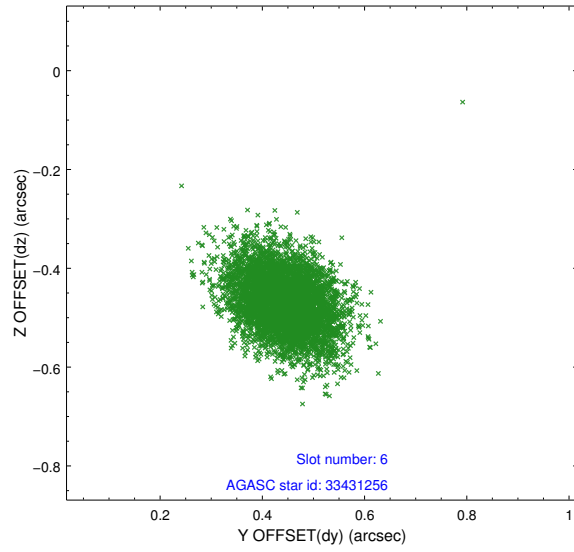
## 2.4.2 Slot 4



### 2.4.3 Slot 5

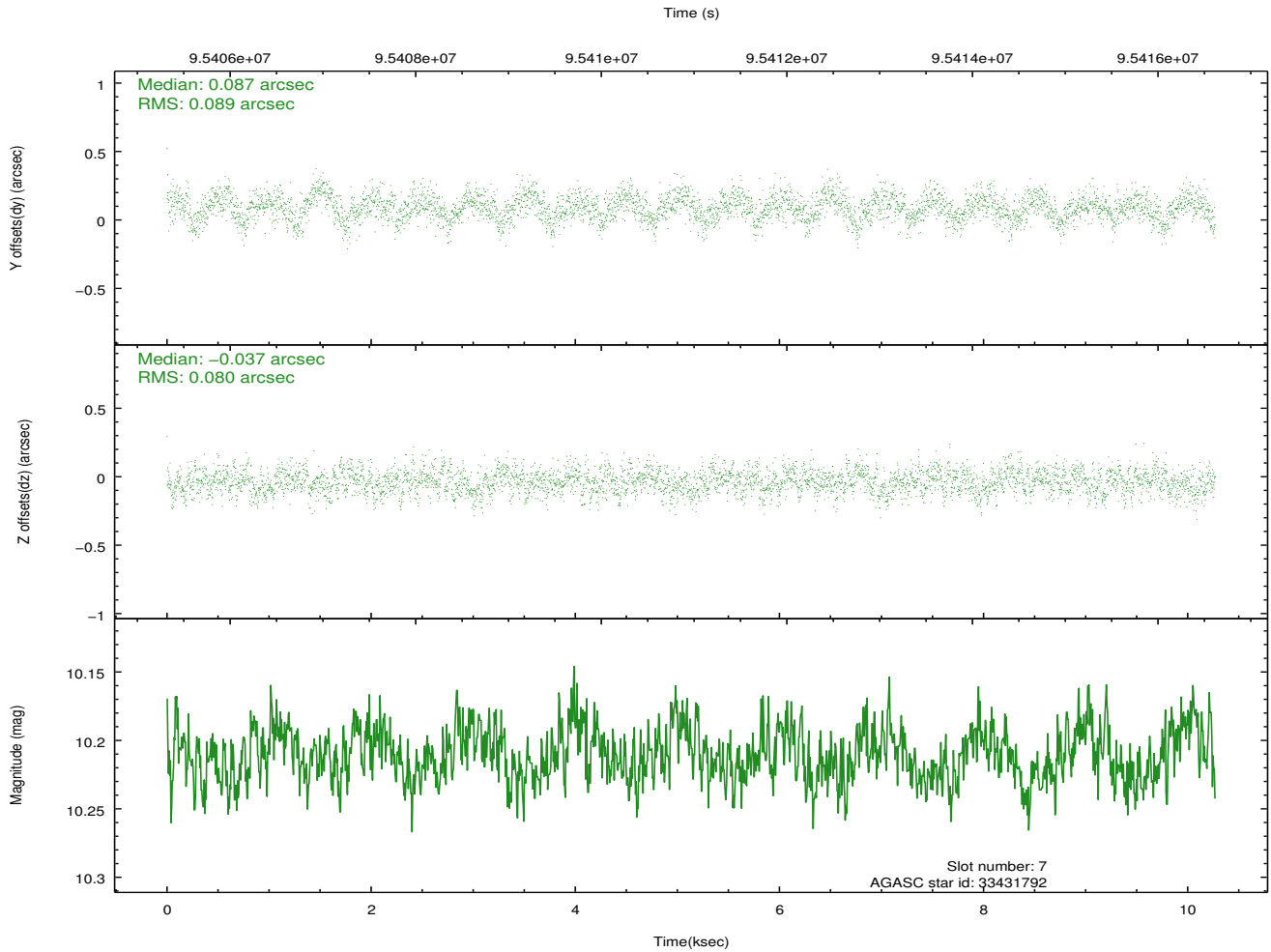
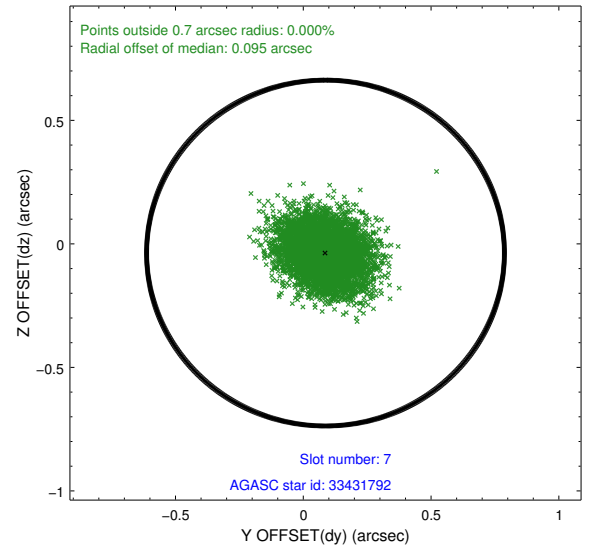
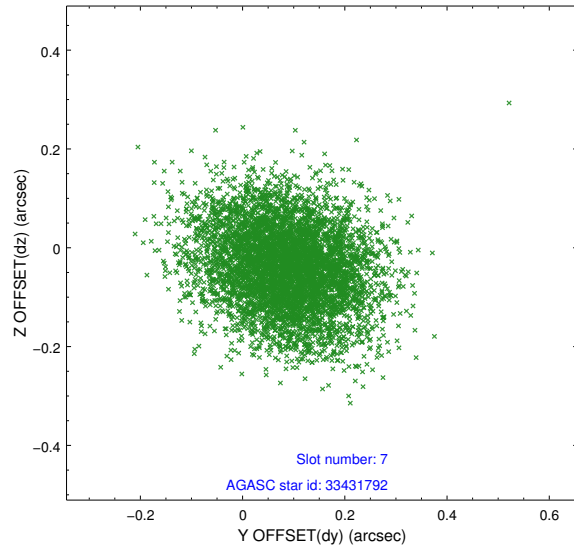


## 2.4.4 Slot 6



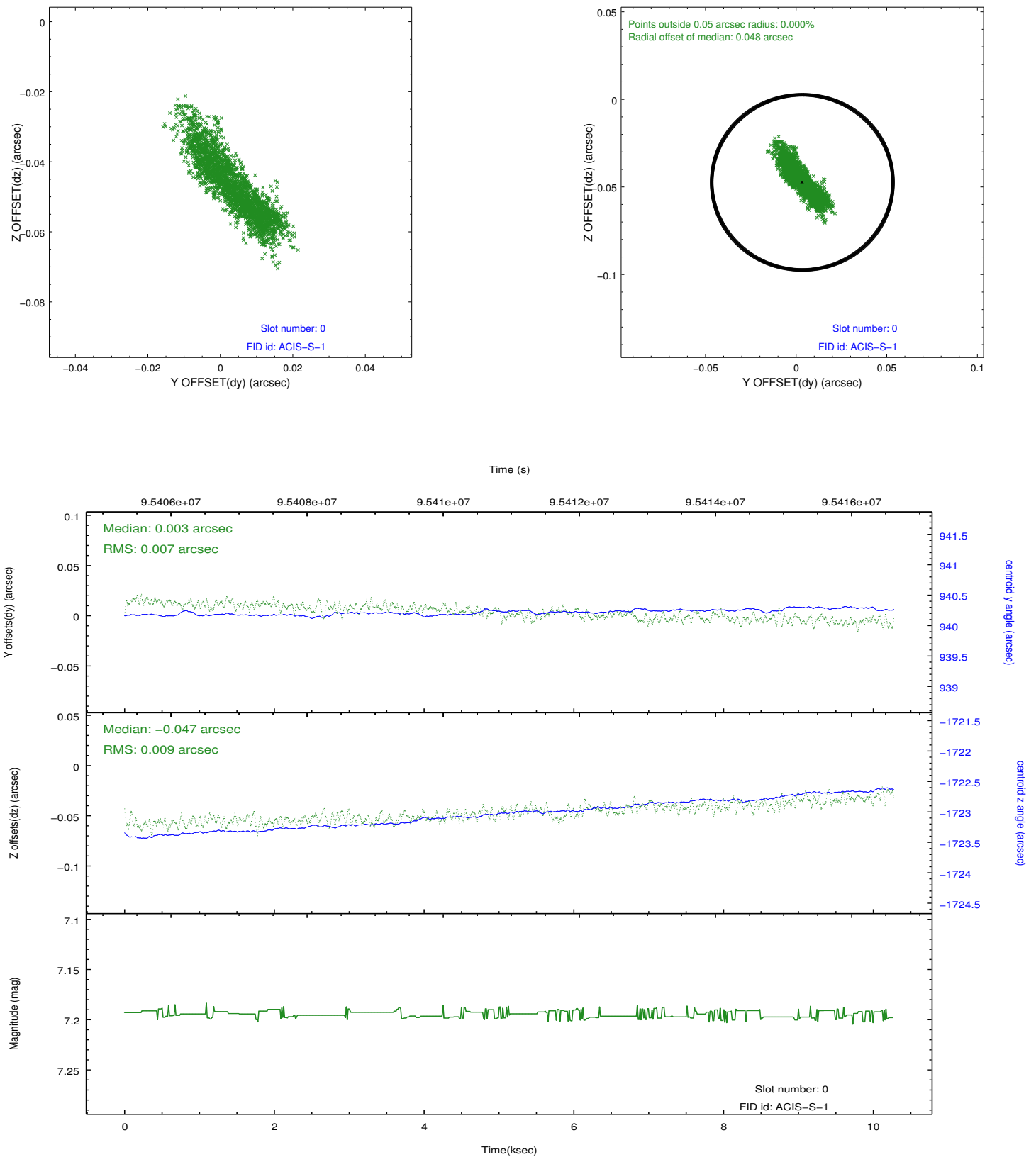


## 2.4.5 Slot 7

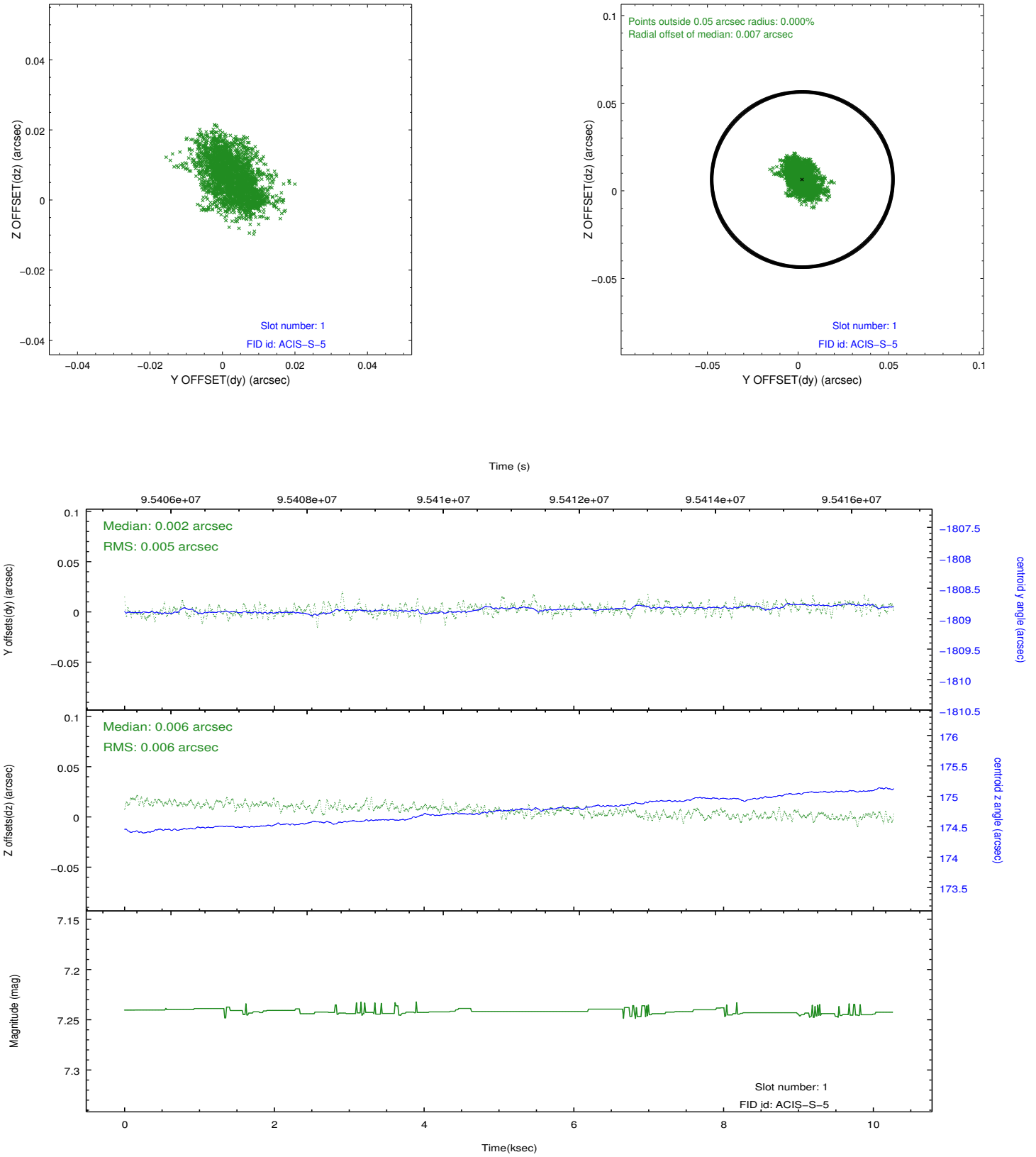


## 2.5 FID Slots

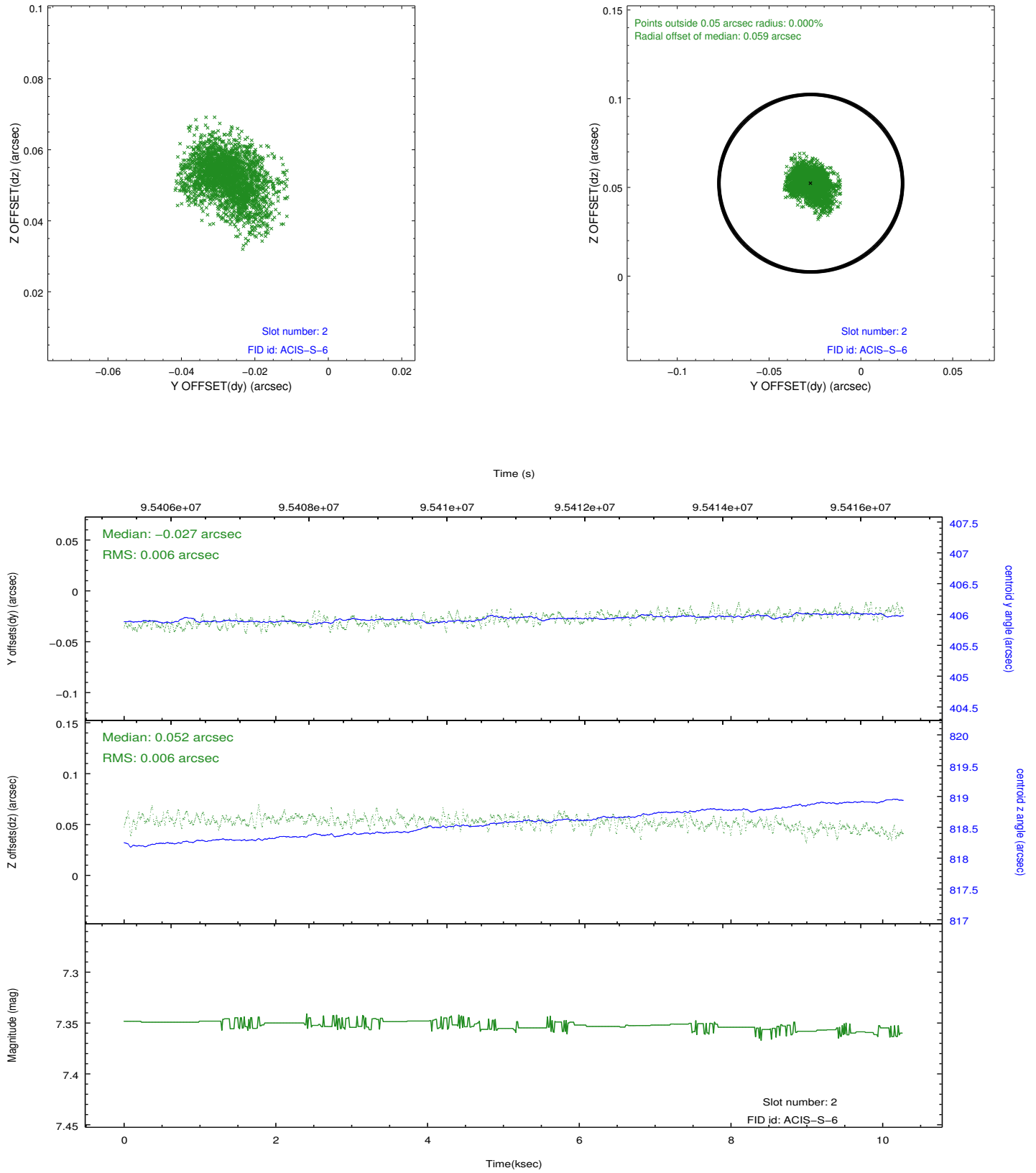
### 2.5.1 Slot 0



## 2.5.2 Slot 1



### 2.5.3 Slot 2



## A Summary

### A.1 Status

V&V Scientist	Jen Lauer
V&V Date (YYYY-MM-DD)	2012.09.14
V&V Edition	1
V&V Disposition and Status	OK
V&V Charge Time	10.27

### A.2 Comments

Roll constraint met.