

# V&V Reference Report

## L2 ASCDS Version : 7.6.9

Observation 2057 - L2 Version 001  
Chandra X-Ray Center

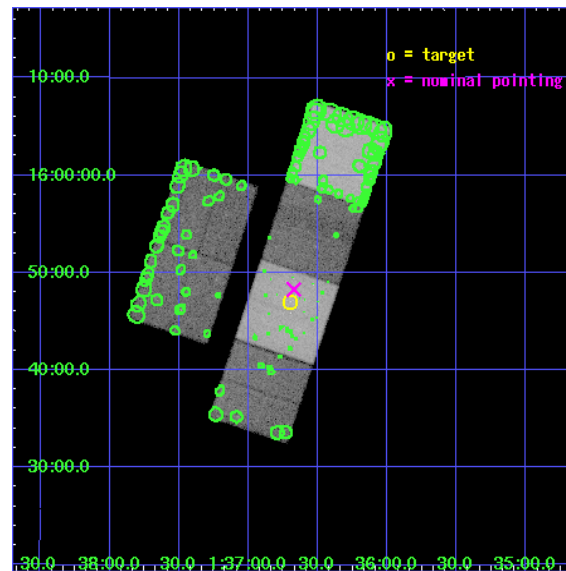
L2 Processing Date : Dec 8 2006

## Contents

<b>1</b>	<b>Front</b>	<b>2</b>
<b>2</b>	<b>OBI</b>	<b>3</b>
2.1	OBI . . . . .	3
2.1.1	Images . . . . .	3
2.1.2	Bias . . . . .	3
2.1.3	Parameters . . . . .	4
2.1.4	Events . . . . .	4
2.2	Compared Parameters . . . . .	5
2.3	Aspect . . . . .	6
2.4	Star Slots . . . . .	9
2.4.1	Slot 3 . . . . .	9
2.4.2	Slot 4 . . . . .	10
2.4.3	Slot 5 . . . . .	11
2.4.4	Slot 6 . . . . .	12
2.4.5	Slot 7 . . . . .	13
2.5	FID Slots . . . . .	14
2.5.1	Slot 0 . . . . .	14
2.5.2	Slot 1 . . . . .	15
2.5.3	Slot 2 . . . . .	16
<b>3</b>	<b>Point Sources</b>	<b>17</b>
<b>A</b>	<b>Summary</b>	<b>18</b>
A.1	Status . . . . .	18
A.2	Comments . . . . .	18

# 1 Front

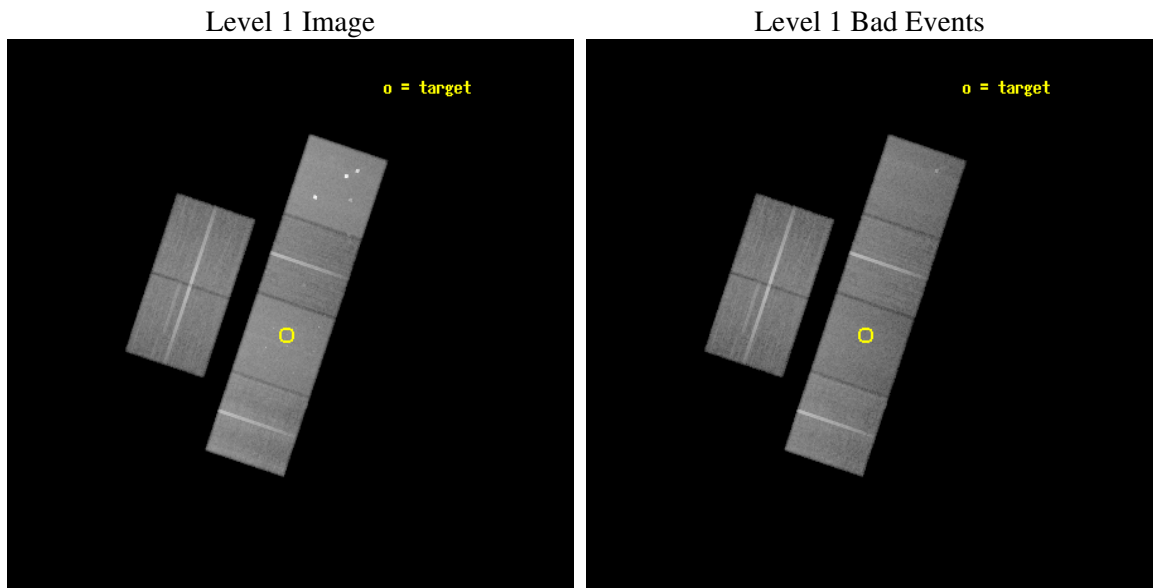
seq_num	600191
obs_id	2057
title	THE X-RAY POINT SOURCE POPULATION IN SPIRAL GALAXIES
observer	Dr. Andrea Prestwich
object	NGC 628
dtcycle	0
cycle	P
ra_targ	24.17375
dec_targ	15.783056
ra_nom	24.168107746367
dec_nom	15.804910132242
roll_nom	108.47164645146
revision	2
ontime	46950.400043726
livetime	46355.885808235
ontime2	46950.400043726
ontime3	46950.400043726
ontime5	46950.400043726
ontime6	46943.918093309
ontime7	46950.400043726
ontime8	46950.400043726
l2events	454865



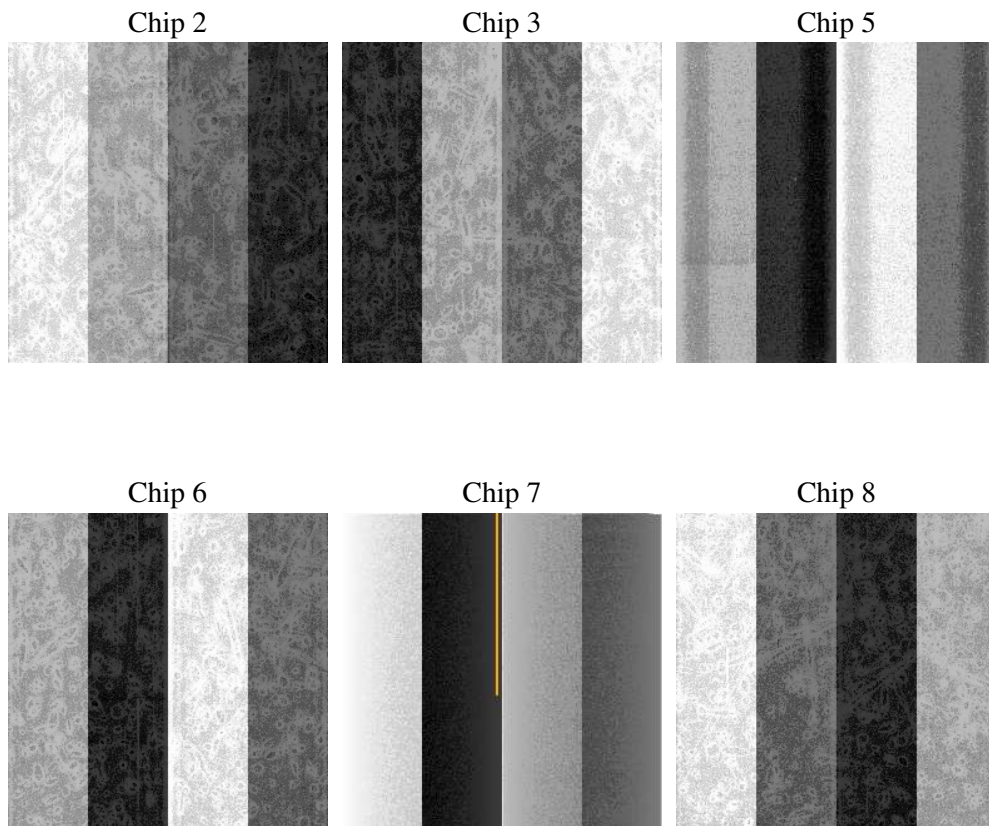
## 2 OBI

### 2.1 OBI

#### 2.1.1 Images



#### 2.1.2 Bias



### 2.1.3 Parameters

obi_num	0
ascdsver	7.6.9
caldsver	3.2.4
date	2006-12-08T09:21:05
revision	2

sched_exp_time	47000.000000
ontime	46955.567671254
ontime2	46955.567671254
ontime3	46955.567671254
ontime5	46955.567671254
ontime6	46949.085720837
ontime7	46955.567671254
ontime8	46955.567671254
l1events	2149399

### 2.1.4 Events

	ccd 2	ccd 3	ccd 5	ccd 6	ccd 7	ccd 8
level 1 events	312535	302047	451774	309830	393945	379268
rejected events	277640	267784	239128	274094	239663	303614
rejected %	88%	88%	52%	88%	60%	80%

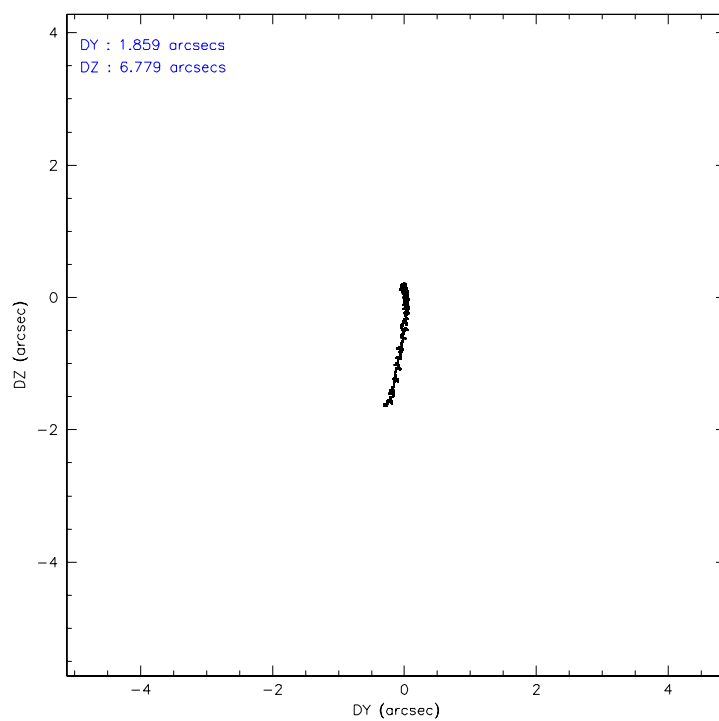
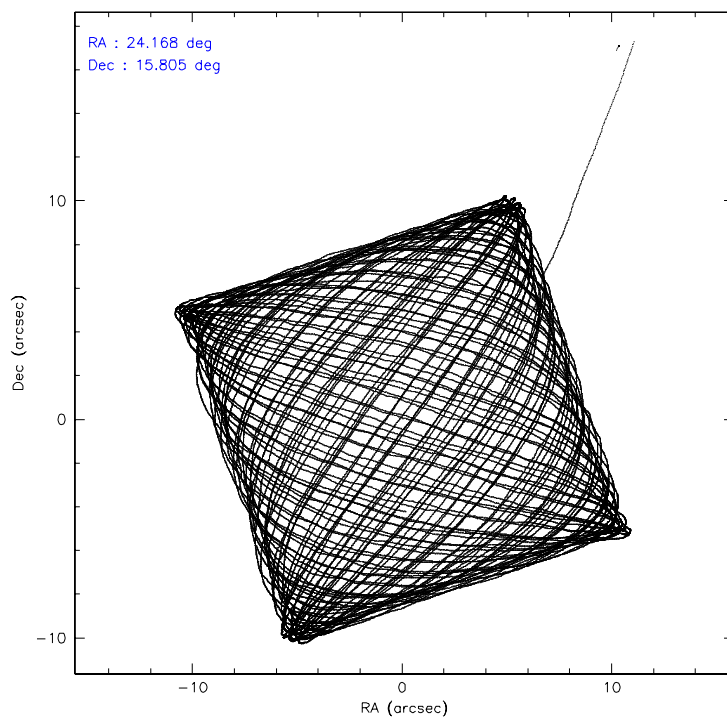
	ccd 2	ccd 3	ccd 5	ccd 6	ccd 7	ccd 8
grade 0 events	14978	14852	38266	15027	10178	24430
	4%	4%	8%	4%	2%	6%
grade 1 events	156	120	1084	167	229	233
	0%	0%	0%	0%	0%	0%
grade 2 events	7427	6794	58059	6984	37900	16463
	2%	2%	12%	2%	9%	4%
grade 3 events	3261	3265	4537	3475	8358	7978
	1%	1%	1%	1%	2%	2%
grade 4 events	3236	3293	4455	3359	8159	7350
	1%	1%	0%	1%	2%	1%
grade 5 events	10592	11602	20926	13100	26189	16110
	3%	3%	4%	4%	6%	4%
grade 6 events	6009	6068	107369	6895	89709	19443
	1%	2%	23%	2%	22%	5%
grade 7 events	266876	256053	217078	260823	213223	287261
	85%	84%	48%	84%	54%	75%

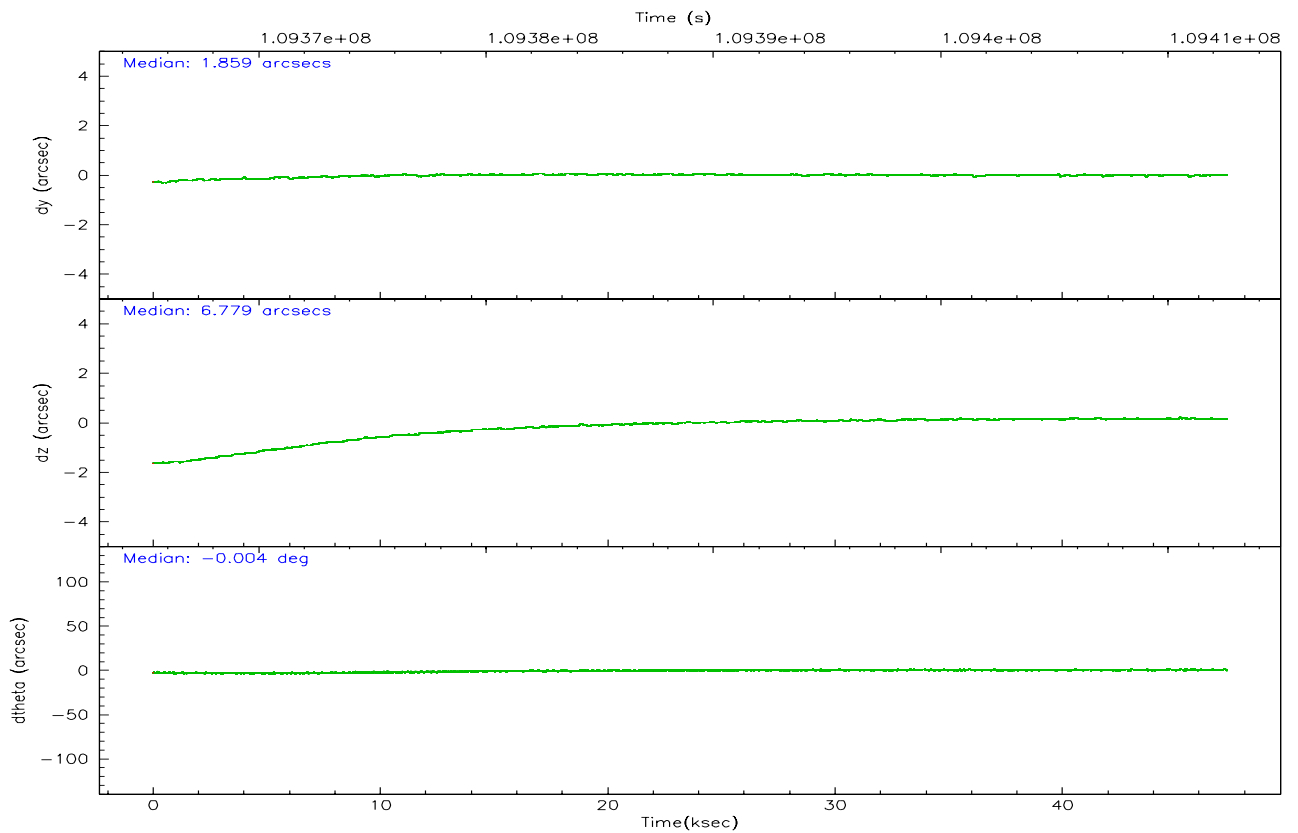
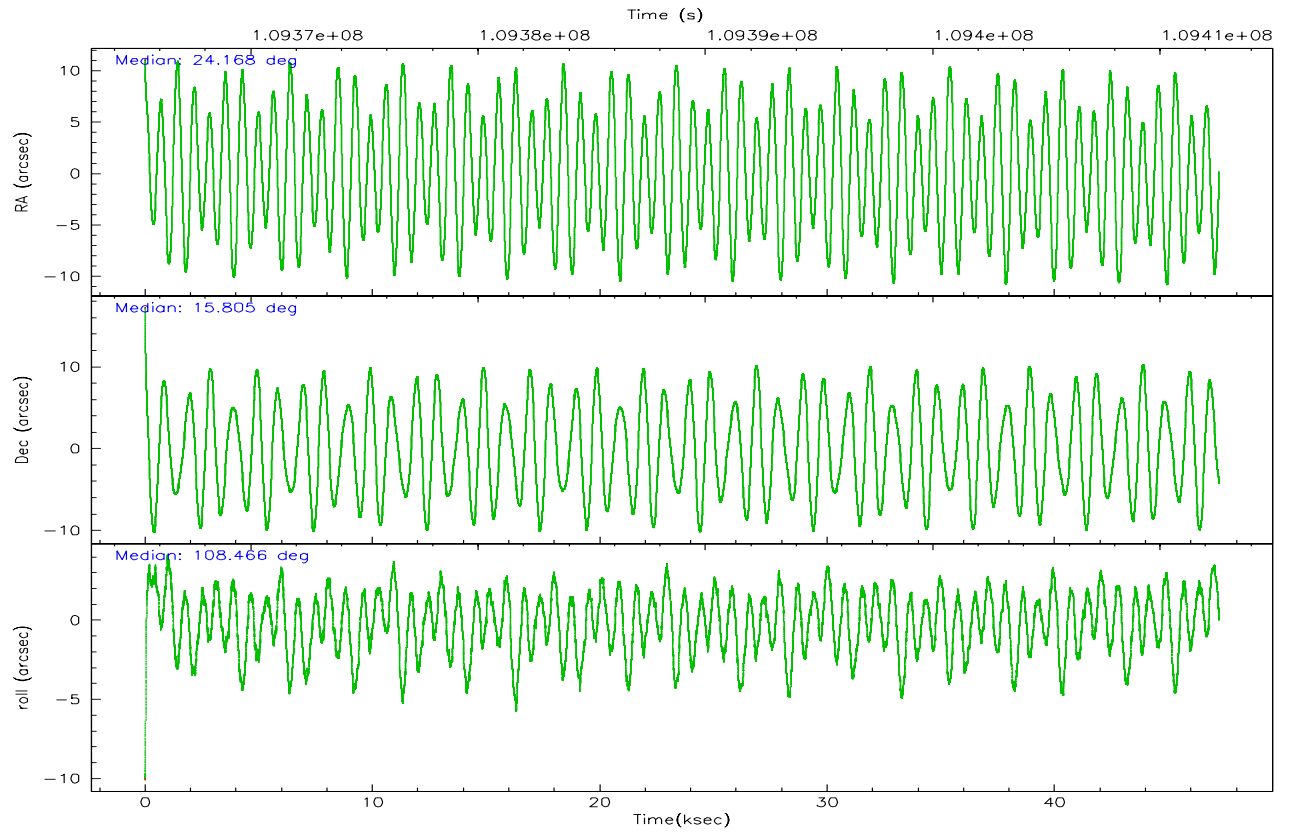


## 2.2 Compared Parameters

Parameter	Planned	Actual	Parameter	Planned	Actual
Instrument	ACIS	ACIS	Obspar format version number	6	6
Detector	ACIS-235678	ACIS-235678	Obspar file type	PREDICTED	ACTUAL
Grating	NONE	NONE	Obspar update status	NONE	UPDATED
Data mode	FAINT	FAINT	Number of optional ACIS chips dropped	0	0
Observation mode	POINTING	POINTING	On-chip summing requested	N	N
Pointing RA	24.189534	24.16810774636698	Subarray requested	NONE	NONE
Pointing Dec	15.787031	15.80491013224222	Alternating exposures requested	N	N
Pointing Roll	108.309185	108.4716464514646	Primary exposure time	0.000000	3.2
SIM focus pos (mm)	-0.684267	-0.6828225247311905			
SIM defocus (mm)	0	0.001444936568705701			
SIM translation stage pos (mm)	-190.132523	-190.1425803651734			
SIM translation stage offset (mm)	0	0.01005778216563158			
Observation start time	109365596.184000	109364589.76889			
Observation start date	2001-06-19T19:18:52	2001-06-19T19:03:09			
Observation end time	109412596.184000	109413069.19578			
Observation end date	2001-06-20T08:22:12	2001-06-20T08:31:09			
Read mode	TIMED	TIMED			

## 2.3 Aspect



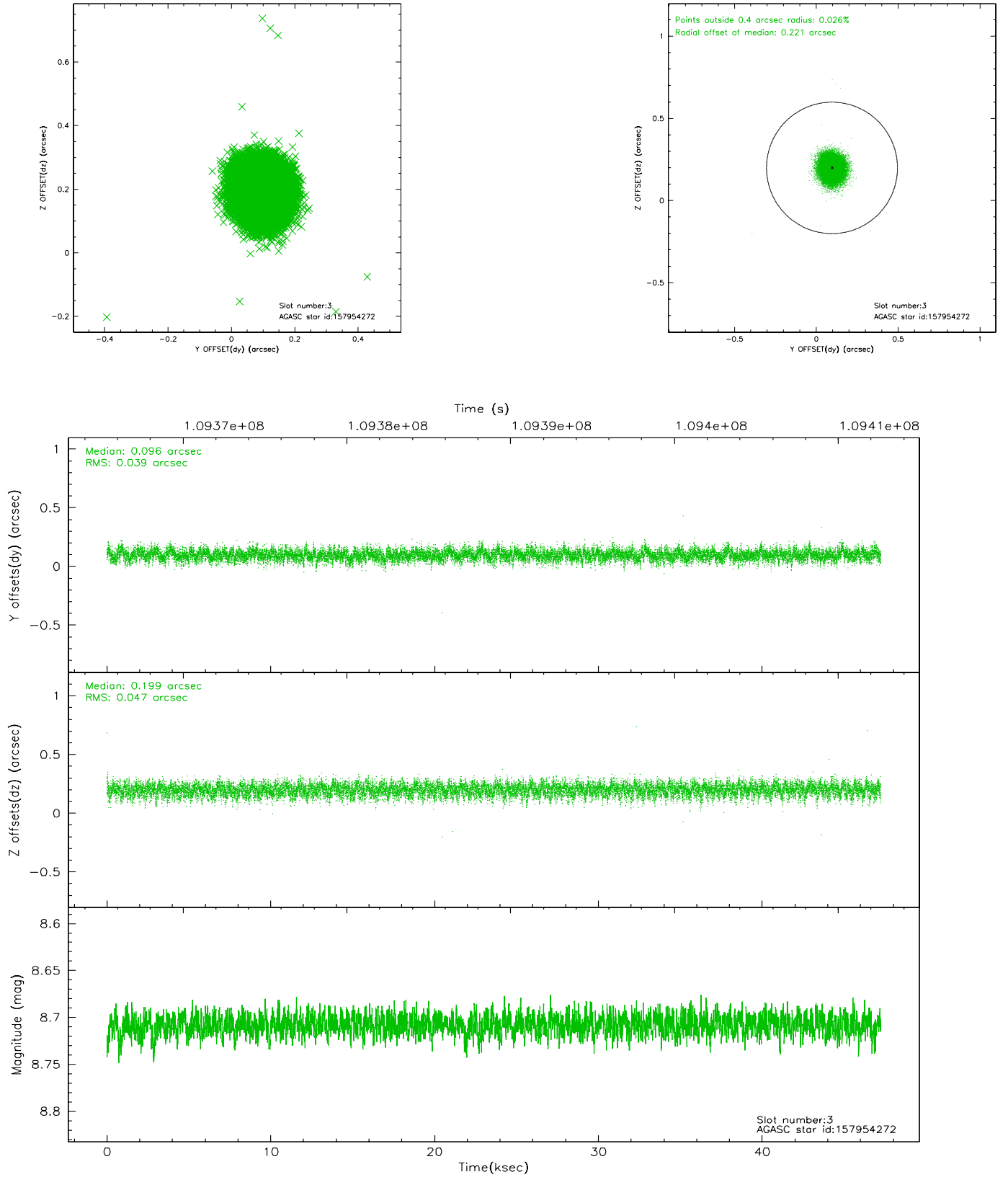


### Slot Statistics

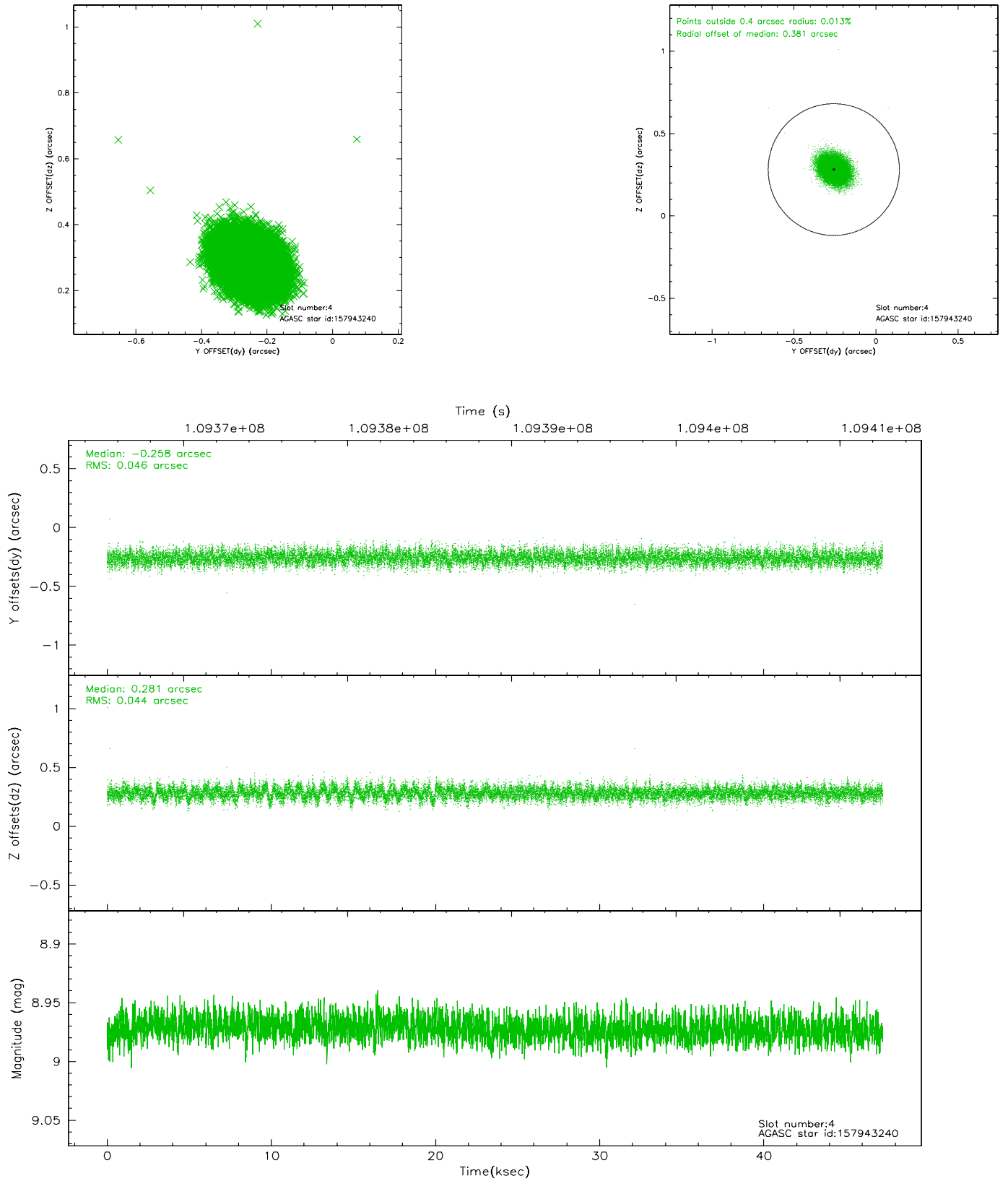
slot	status	id	mag	n_pts	med_dy	med_dz	dr1	dr2	ra	dec	mean_y	mean_z
0	FID	ACIS-S-2	7.11	11522	-0.013	0.031	0.010	0.017	0.000000	0.000000	-754.44	-1727.62
1	FID	ACIS-S-4	7.20	11518	-0.102	-0.002	0.011	0.022	0.000000	0.000000	2158.73	180.88
2	FID	ACIS-S-5	7.24	11521	0.083	-0.021	0.008	0.013	0.000000	0.000000	-1807.22	174.47
3	GUIDE	157954272	8.71	23043	0.096	0.199	0.065	0.104	24.932144	15.423798	-2047.20	-2037.32
4	GUIDE	157943240	8.97	23034	-0.258	0.281	0.068	0.111	24.500363	16.361777	1627.02	-1669.28
5	GUIDE	157036752	9.08	23037	-0.098	-0.126	0.090	0.152	23.400830	16.130370	2034.35	2199.67
6	GUIDE	157029352	9.06	23039	0.089	-0.274	0.087	0.147	23.764744	15.271289	-1298.54	1983.05
7	GUIDE	157953216	9.37	23030	0.172	-0.076	0.079	0.131	24.189817	15.248642	-1840.97	607.79

## 2.4 Star Slots

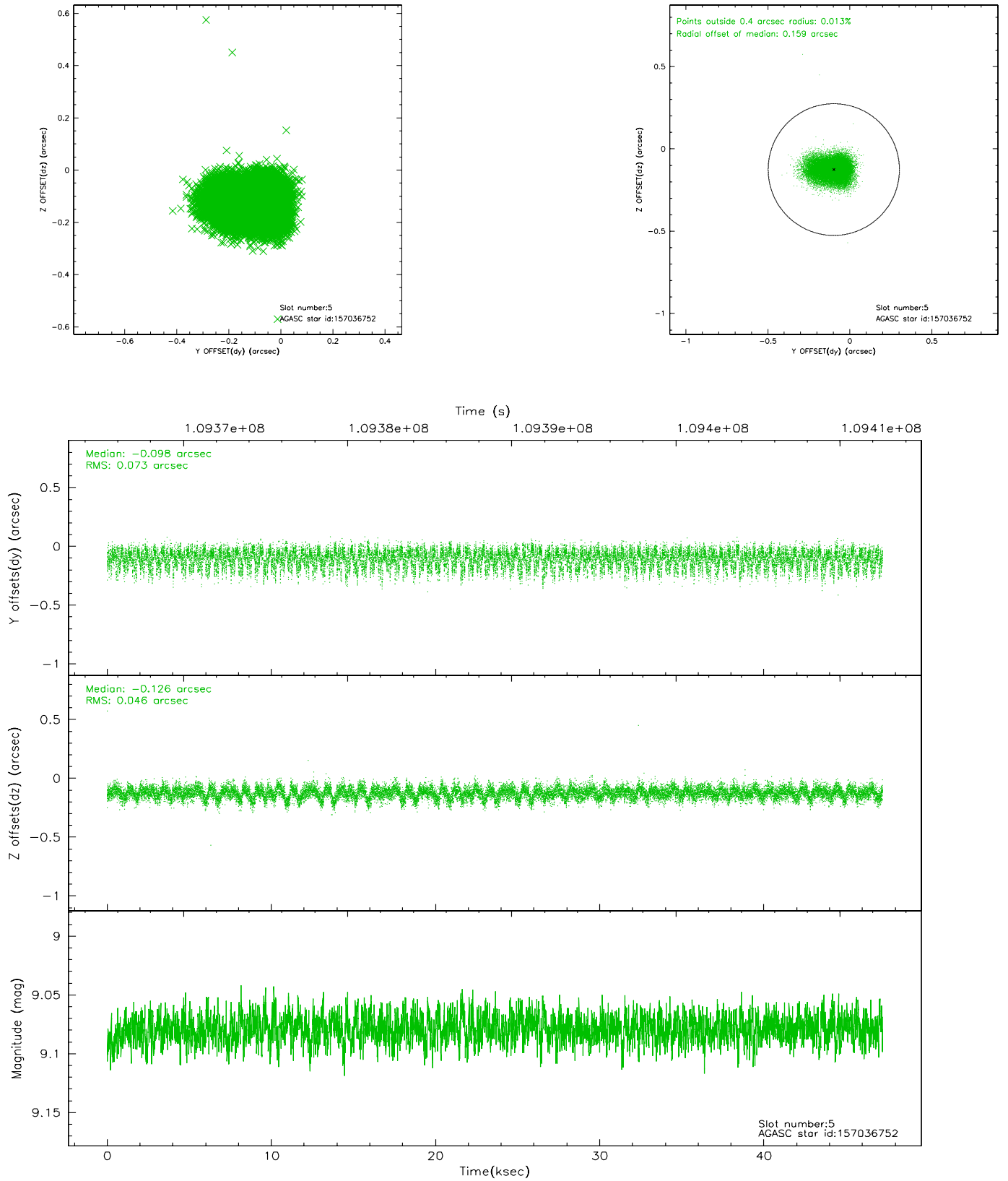
### 2.4.1 Slot 3



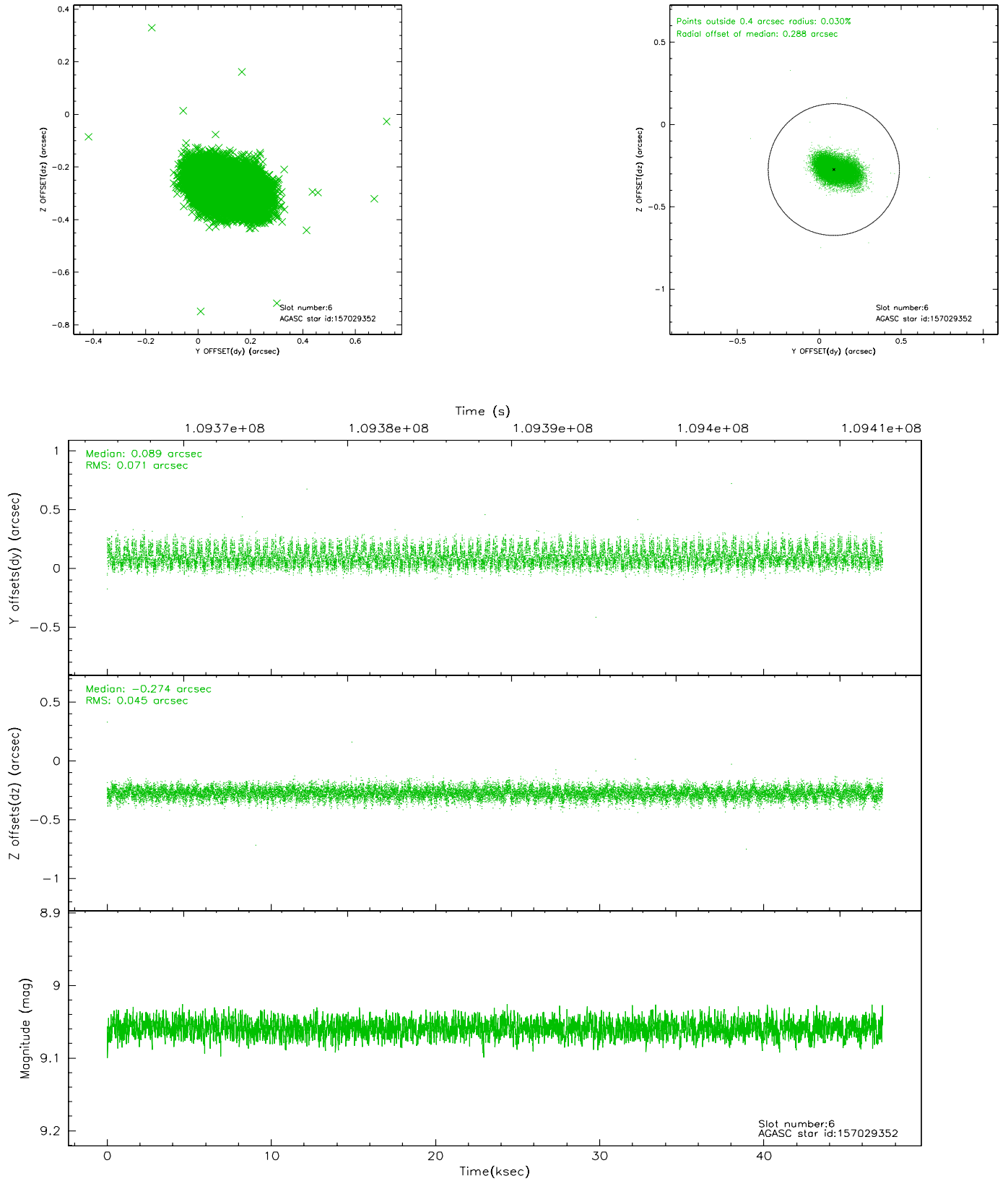
## 2.4.2 Slot 4



### 2.4.3 Slot 5

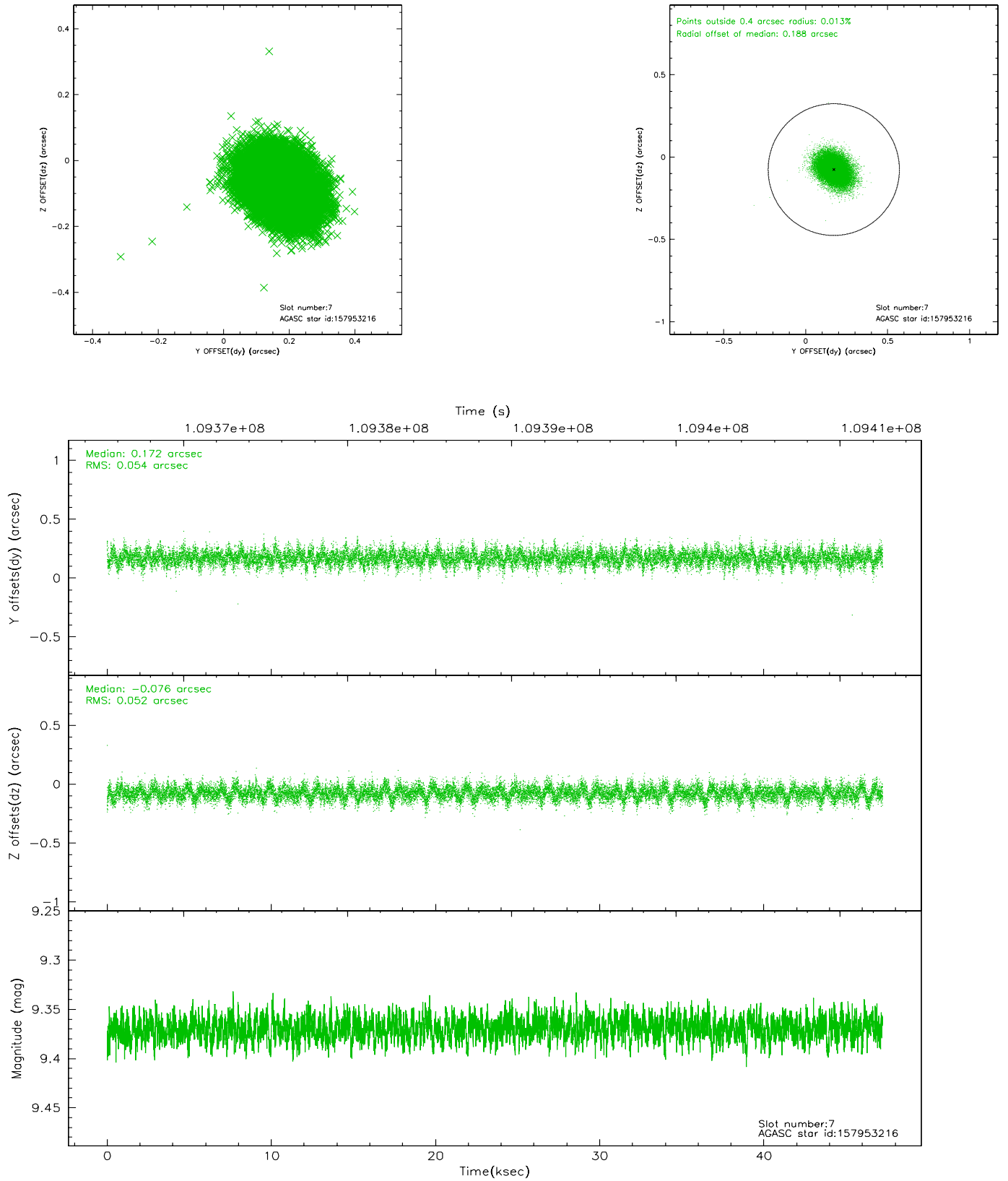


## 2.4.4 Slot 6



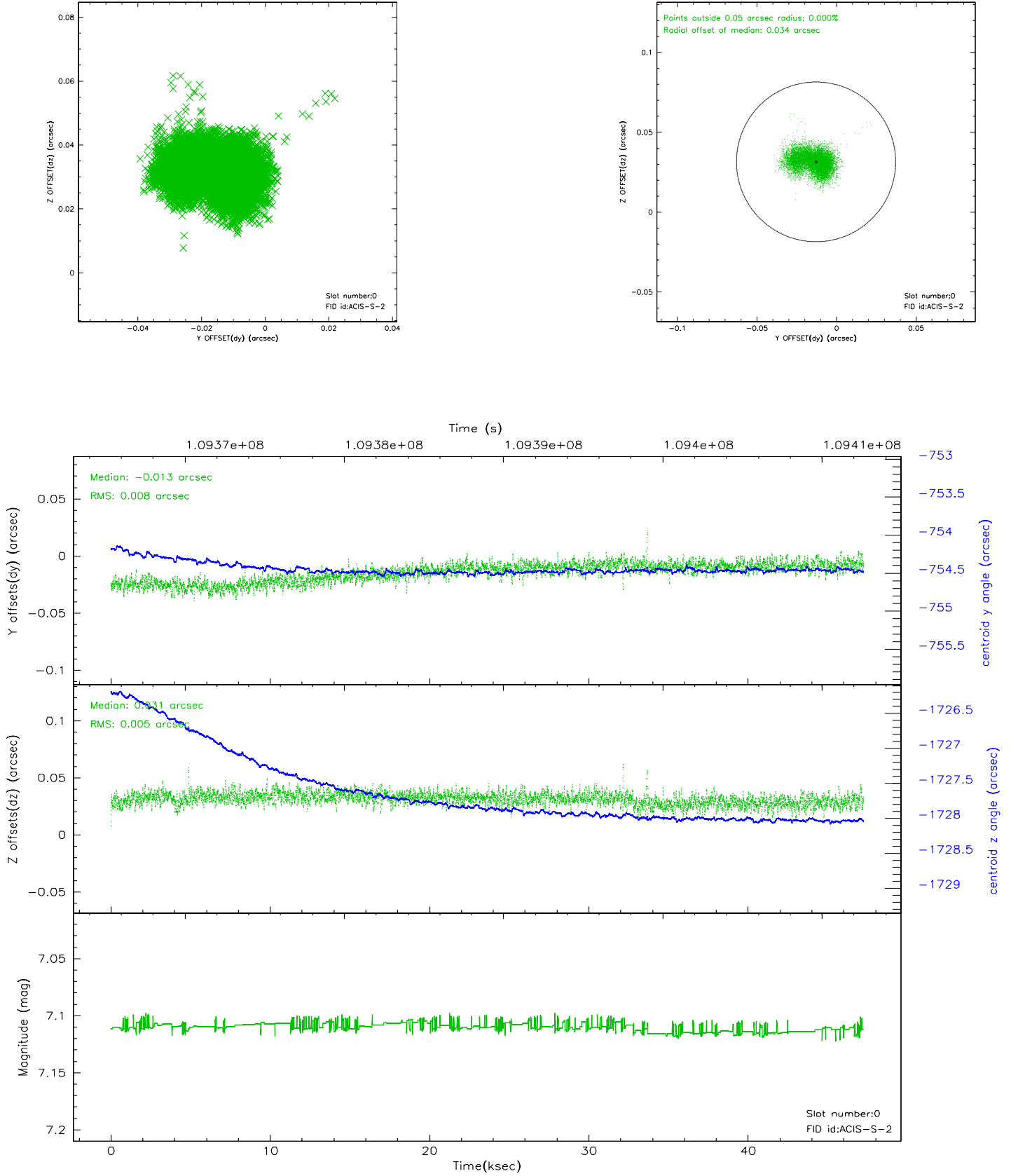


## 2.4.5 Slot 7

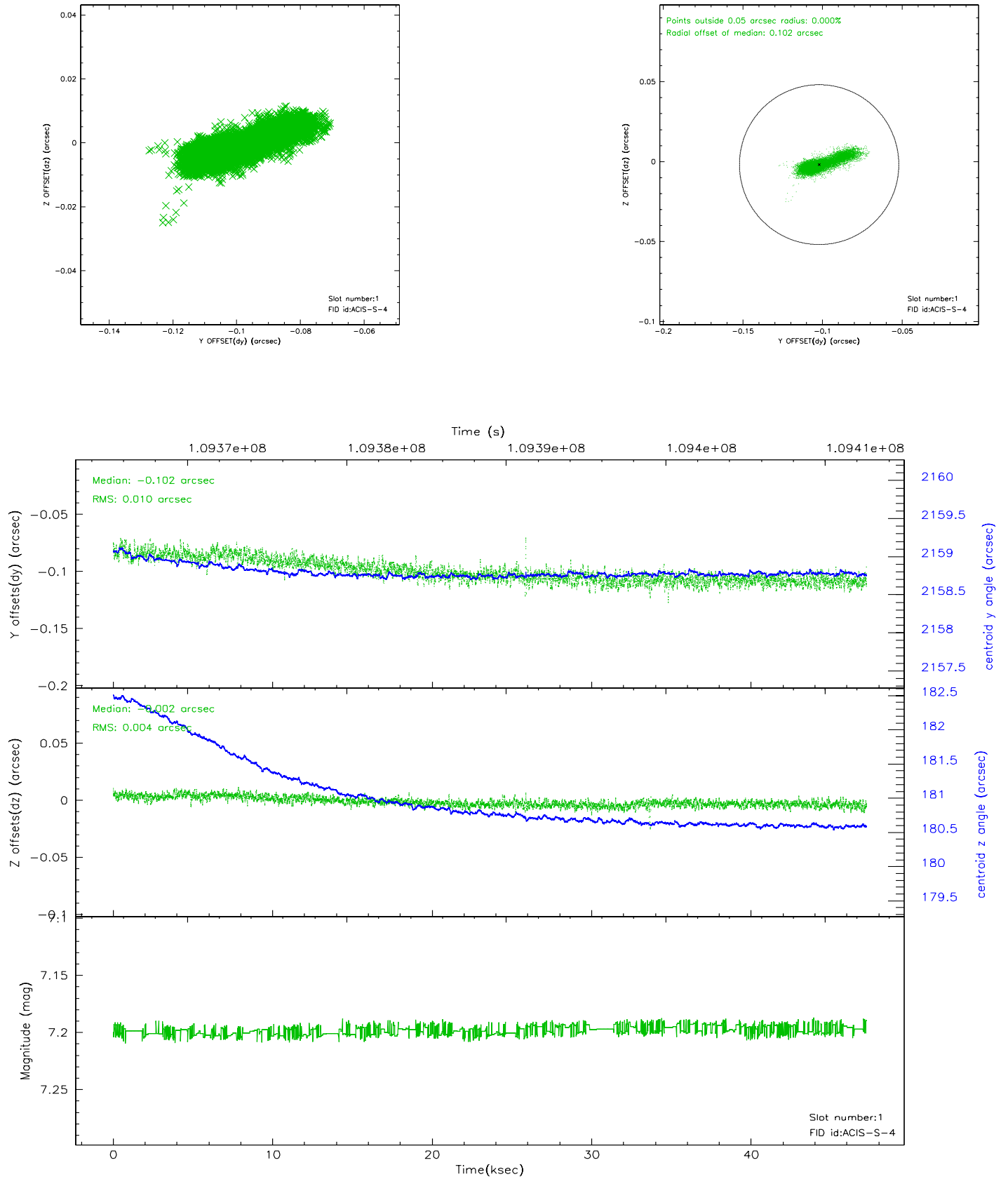


## 2.5 FID Slots

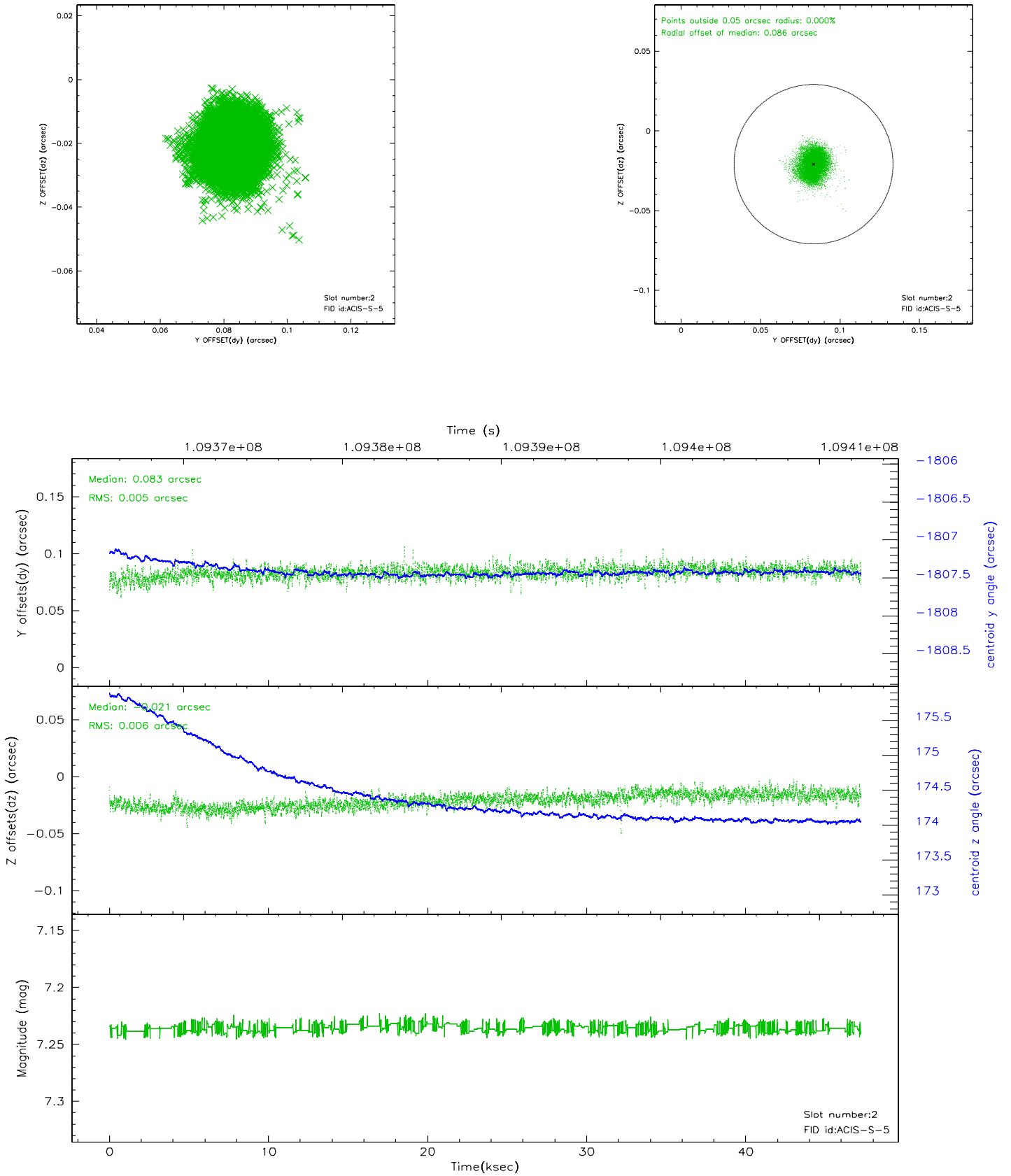
### 2.5.1 Slot 0



## 2.5.2 Slot 1

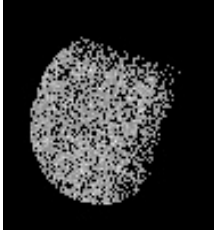


### 2.5.3 Slot 2

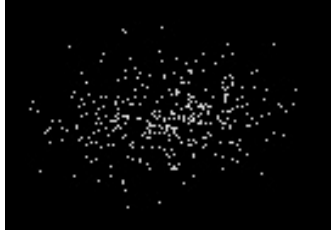


### 3 Point Sources

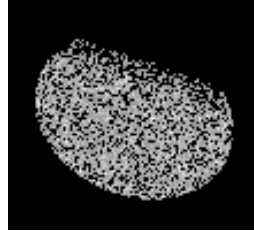
18.65 arcmin



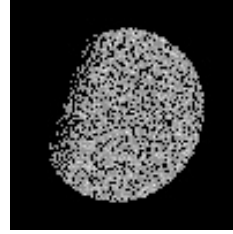
3.59 arcmin



18.54 arcmin



18.17 arcmin



## A Summary

### A.1 Status

V&V Scientist	Beth Sundheim
V&V Date (YYYY-MM-DD)	2006.12.08
V&V Edition	1
V&V Disposition and Status	OK
V&V Charge Time	47

### A.2 Comments