

V&V Reference Report

L2 ASCDS Version : 7.6.9

Observation 2047 - L2 Version 001
Chandra X-Ray Center

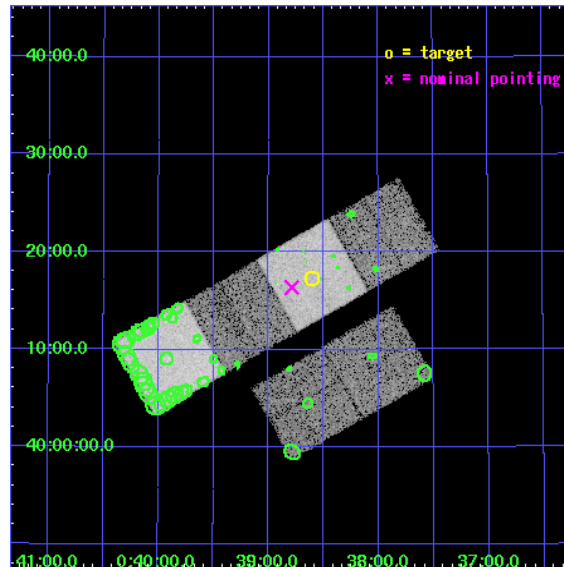
L2 Processing Date : Nov 7 2006

Contents

1	Front	2
2	OBI	3
2.1	OBI	3
2.1.1	Images	3
2.1.2	Bias	3
2.1.3	Parameters	4
2.1.4	Events	4
2.2	Compared Parameters	5
2.3	Aspect	6
2.4	Star Slots	9
2.4.1	Slot 3	9
2.4.2	Slot 4	10
2.4.3	Slot 5	11
2.4.4	Slot 6	12
2.4.5	Slot 7	13
2.5	FID Slots	14
2.5.1	Slot 0	14
2.5.2	Slot 1	15
2.5.3	Slot 2	16
3	Point Sources	17
A	Summary	18
A.1	Status	18
A.2	Comments	18

1 Front

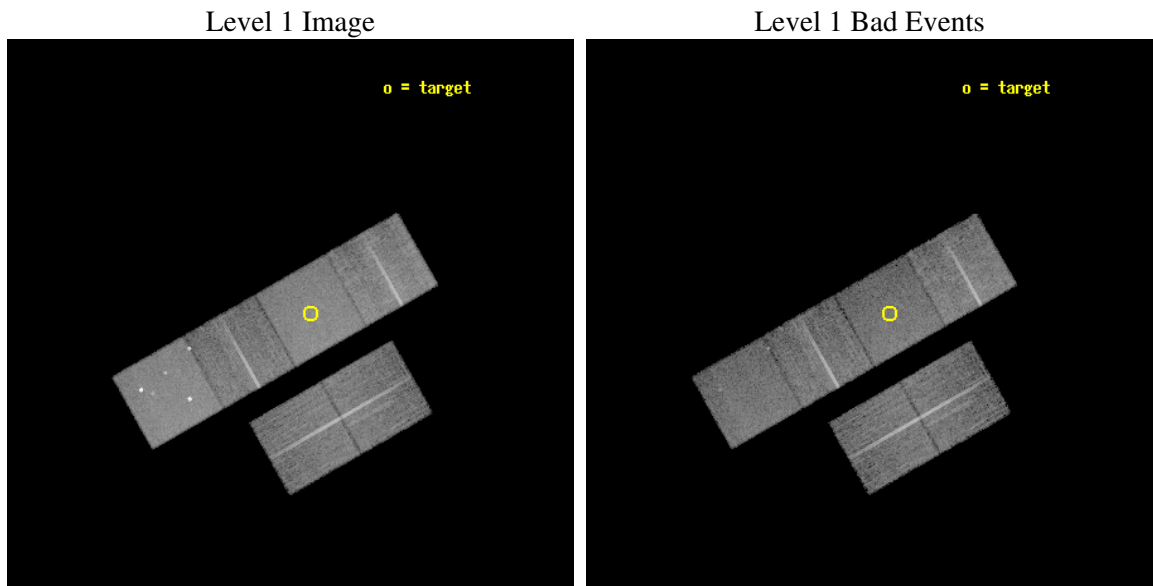
seq_num	600181
obs_id	2047
title	2001: A SPACE CENSUS -- SUPERSOFT X-RAY SOURCES AND OTHER X-RAY SOURCES IN M31
observer	Dr Rosanne Di Stefano
object	M31_1
dtcycle	0
cycle	P
ra_targ	9.652083
dec_targ	40.288889
ra_nom	9.6968901764127
dec_nom	40.273091415003
roll_nom	330.37342708652
revision	2
ontime	14774.40001376
livetime	14587.31766471
ontime2	14774.40001376
ontime3	14774.40001376
ontime5	14774.40001376
ontime6	14771.159053504
ontime7	14774.40001376
ontime8	14771.159193113
l2events	139672



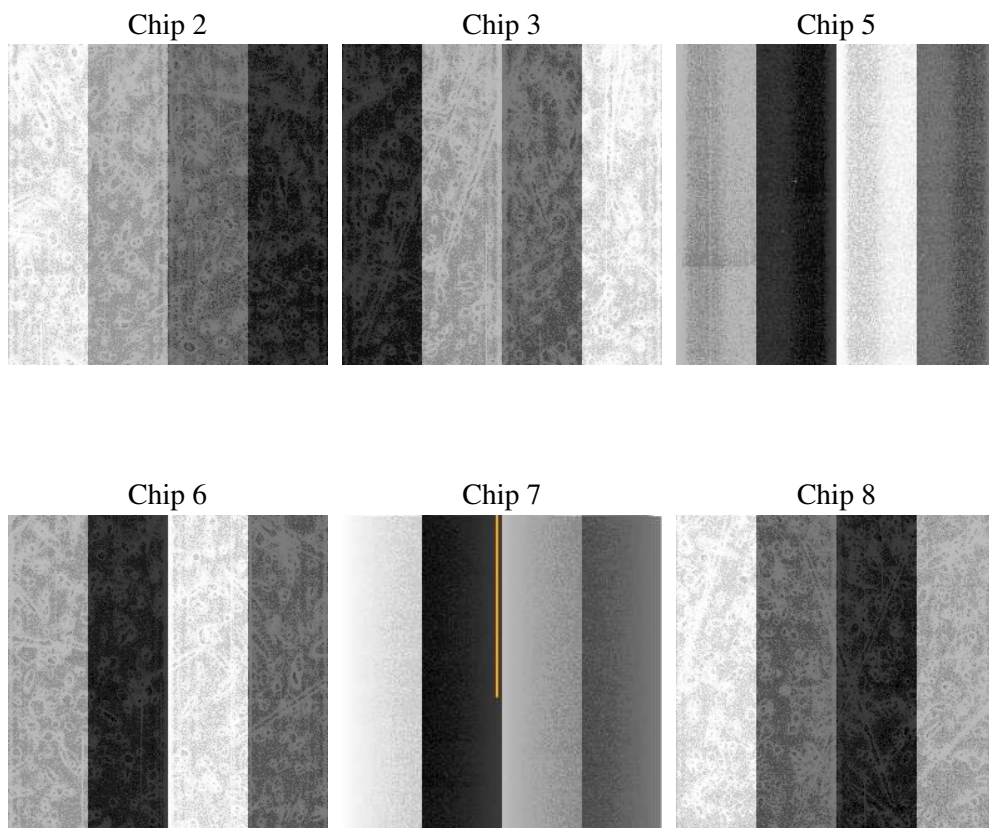
2 OBI

2.1 OBI

2.1.1 Images



2.1.2 Bias



2.1.3 Parameters

obi_num	0
ascdsver	7.6.9
caldbver	3.2.3
date	2006-11-07T21:34:32
revision	2

sched_exp_time	15064.740000
ontime	14778.944720954
ontime2	14778.944720954
ontime3	14778.944720954
ontime5	14778.944720954
ontime6	14775.703760698
ontime7	14778.944720954
ontime8	14775.703790635
l1events	671393

2.1.4 Events

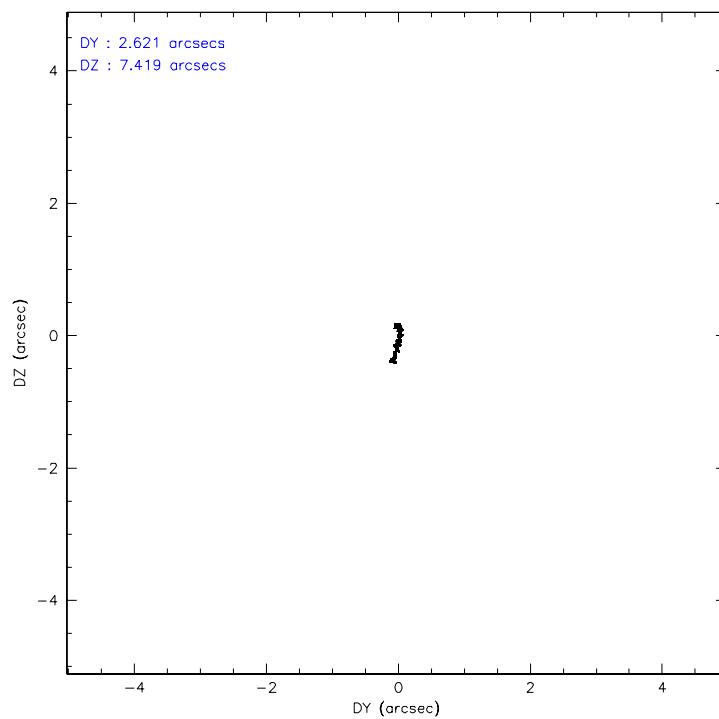
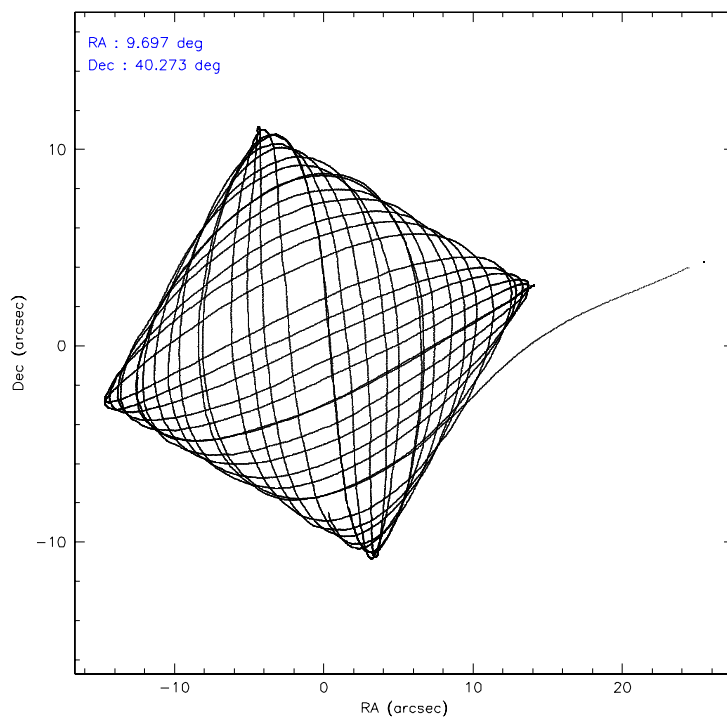
	ccd 2	ccd 3	ccd 5	ccd 6	ccd 7	ccd 8
level 1 events	97379	93102	140779	96246	121674	122213
rejected events	86721	82554	74582	85431	74481	99359
rejected %	89%	88%	52%	88%	61%	81%

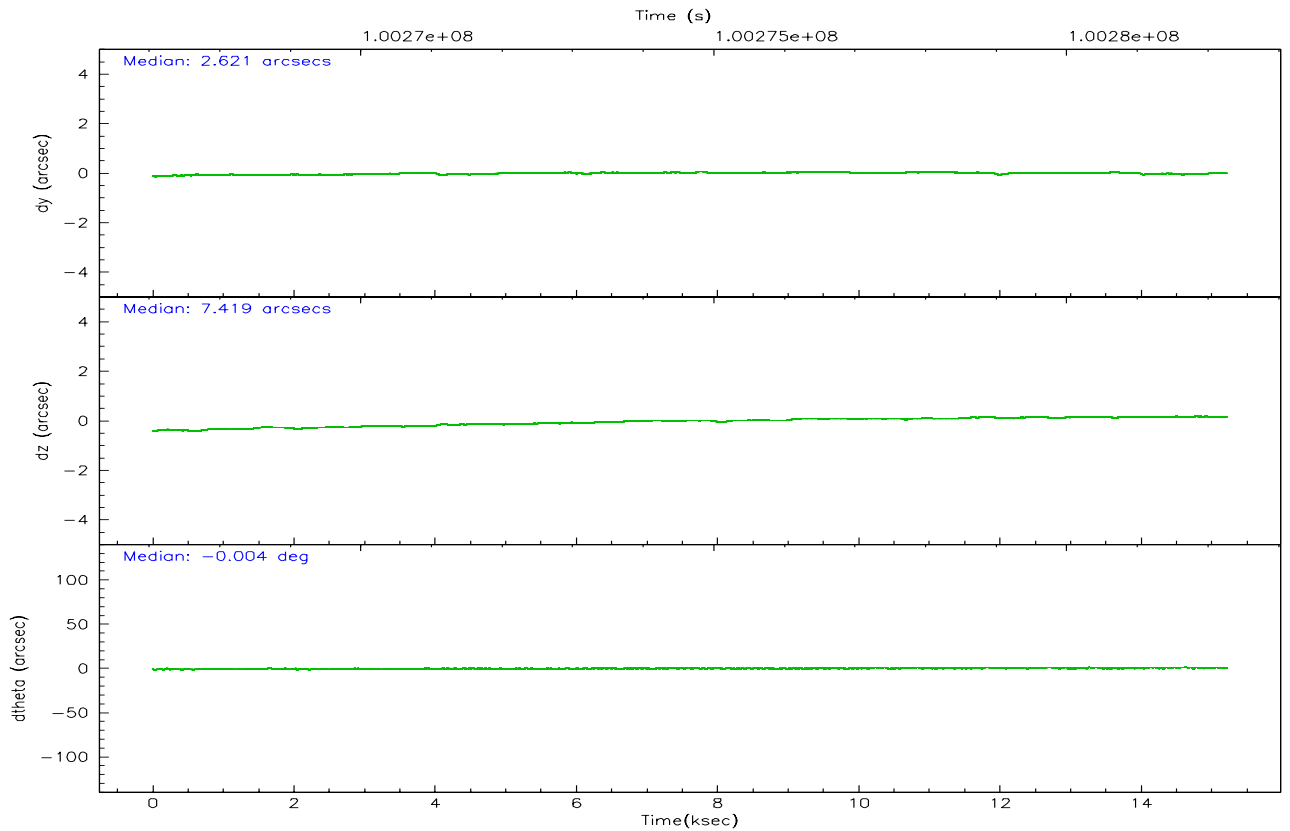
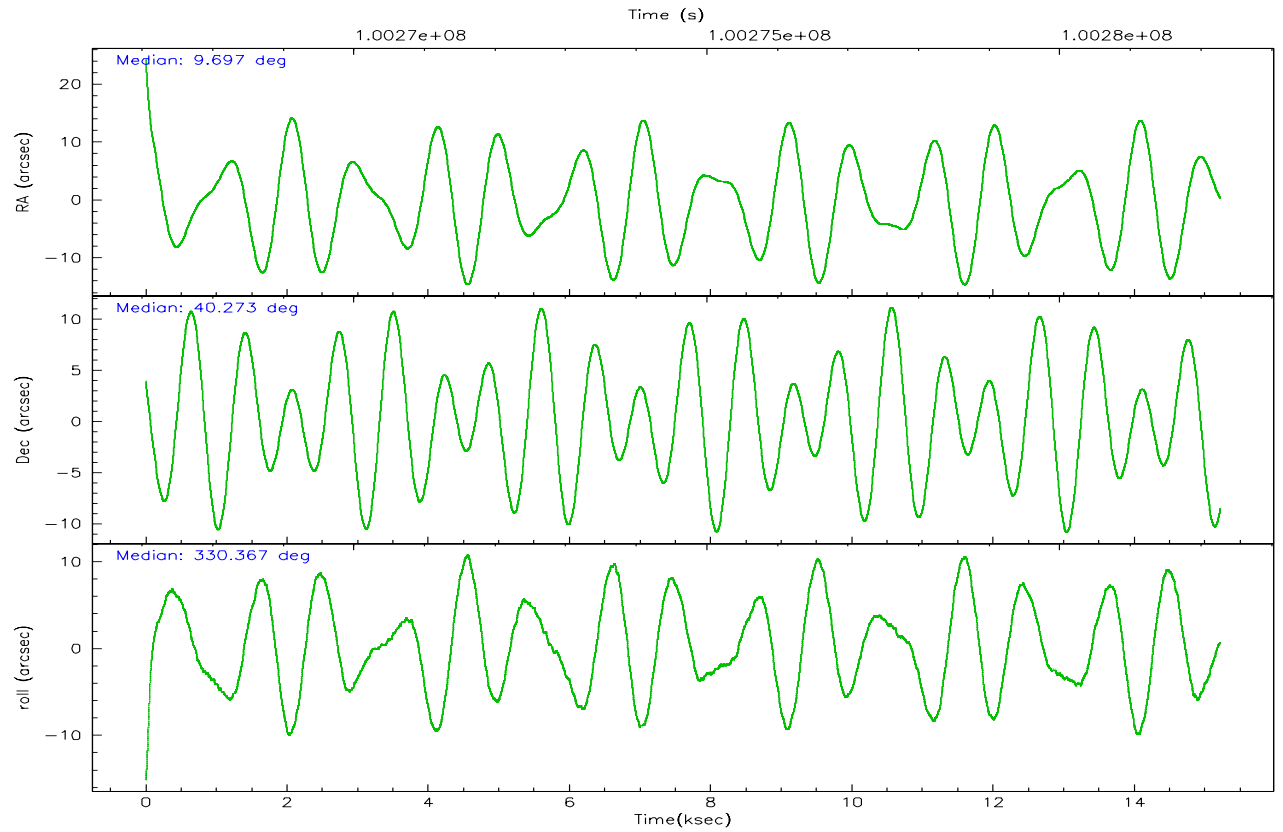
	ccd 2	ccd 3	ccd 5	ccd 6	ccd 7	ccd 8
grade 0 events	4420	4440	8713	4406	3036	7290
	4%	4%	6%	4%	2%	5%
grade 1 events	38	36	320	53	65	62
	0%	0%	0%	0%	0%	0%
grade 2 events	2322	2111	20511	2128	11485	4881
	2%	2%	14%	2%	9%	3%
grade 3 events	1015	1053	1527	1093	2604	2575
	1%	1%	1%	1%	2%	2%
grade 4 events	978	1034	1483	1066	2623	2455
	1%	1%	1%	1%	2%	2%
grade 5 events	3313	3574	6532	4016	8286	5015
	3%	3%	4%	4%	6%	4%
grade 6 events	1923	1915	33975	2125	27450	5656
	1%	2%	24%	2%	22%	4%
grade 7 events	83370	78939	67718	81359	66125	94279
	85%	84%	48%	84%	54%	77%

2.2 Compared Parameters

Parameter	Planned	Actual	Parameter	Planned	Actual
Instrument	ACIS	ACIS	Obspar format version number	6	6
Detector	ACIS-235678	ACIS-235678	Obspar file type	PREDICTED	ACTUAL
Grating	NONE	NONE	Obspar update status	NONE	UPDATED
Data mode	FAINT	FAINT	Number of optional ACIS chips dropped	0	0
Observation mode	POINTING	POINTING	On-chip summing requested	N	N
Pointing RA	9.661078	9.696890176412719	Subarray requested	NONE	NONE
Pointing Dec	40.272683	40.27309141500253	Alternating exposures requested	N	N
Pointing Roll	330.239962	330.373427086516	Primary exposure time	0.000000	3.2
SIM focus pos (mm)	-0.684267	-0.6828225247311905			
SIM defocus (mm)	0	0.001444936568705701			
SIM translation stage pos (mm)	-190.132523	-190.1400660498719			
SIM translation stage offset (mm)	0	0.00754346686406393			
Observation start time	100267210.184000	100266116.44073			
Observation start date	2001-03-06T11:59:06	2001-03-06T11:41:56			
Observation end time	100282275.184000	100282589.72886			
Observation end date	2001-03-06T16:10:11	2001-03-06T16:16:29			
Read mode	TIMED	TIMED			

2.3 Aspect



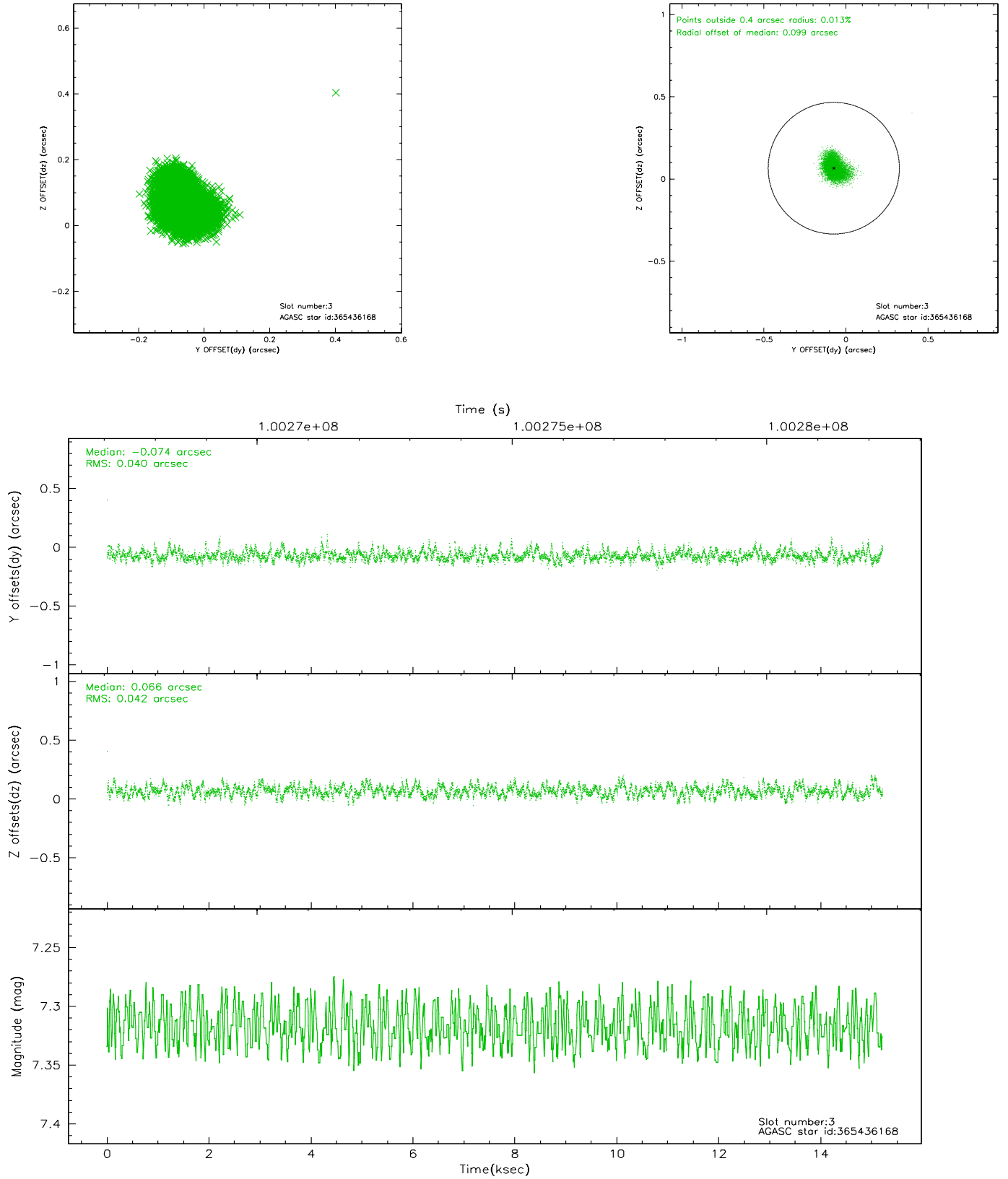


Slot Statistics

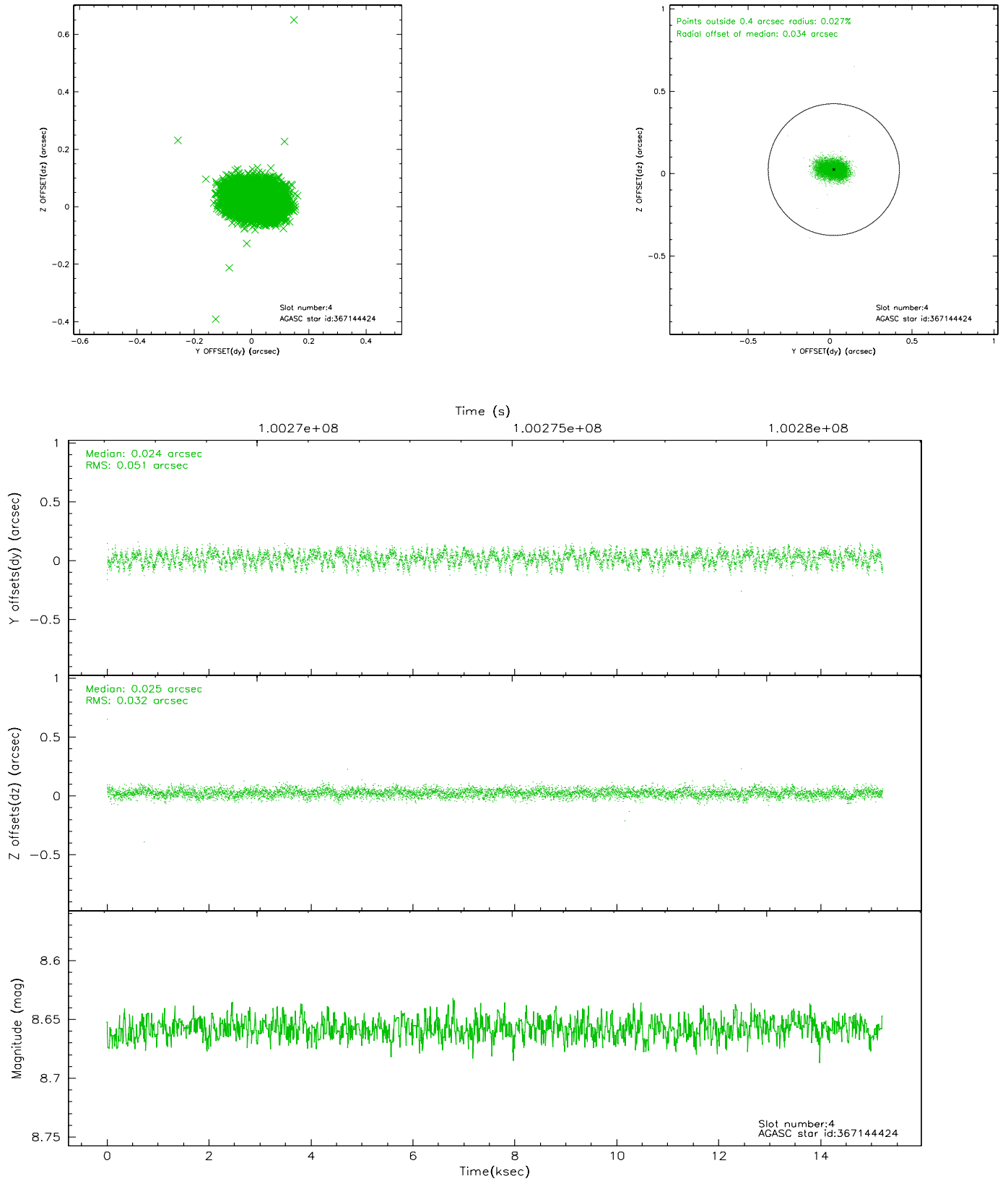
slot	status	id	mag	n_pts	med_dy	med_dz	dr1	dr2	ra	dec	mean_y	mean_z
0	FID	ACIS-S-2	7.11	3711	0.007	0.017	0.008	0.012	0.000000	0.000000	-755.24	-1728.53
1	FID	ACIS-S-4	7.20	3711	-0.089	-0.008	0.006	0.010	0.000000	0.000000	2157.81	179.61
2	FID	ACIS-S-5	7.24	3712	0.051	-0.000	0.007	0.011	0.000000	0.000000	-1807.65	173.64
3	GUIDE	365436168	7.32	7423	-0.074	0.066	0.062	0.102	9.360006	40.332380	-823.41	-222.22
4	GUIDE	367144424	8.66	7419	0.024	0.025	0.063	0.103	10.464515	40.309136	1845.64	1217.79
5	GUIDE	365431072	9.01	7419	-0.112	0.093	0.081	0.132	9.376278	41.092224	-2134.84	2178.97
6	GUIDE	365435256	8.89	7420	0.072	-0.081	0.089	0.137	9.519215	39.682445	714.66	-2039.01
7	GUIDE	367147216	7.50	7419	0.090	-0.101	0.058	0.100	10.028762	39.440654	2374.96	-2091.04

2.4 Star Slots

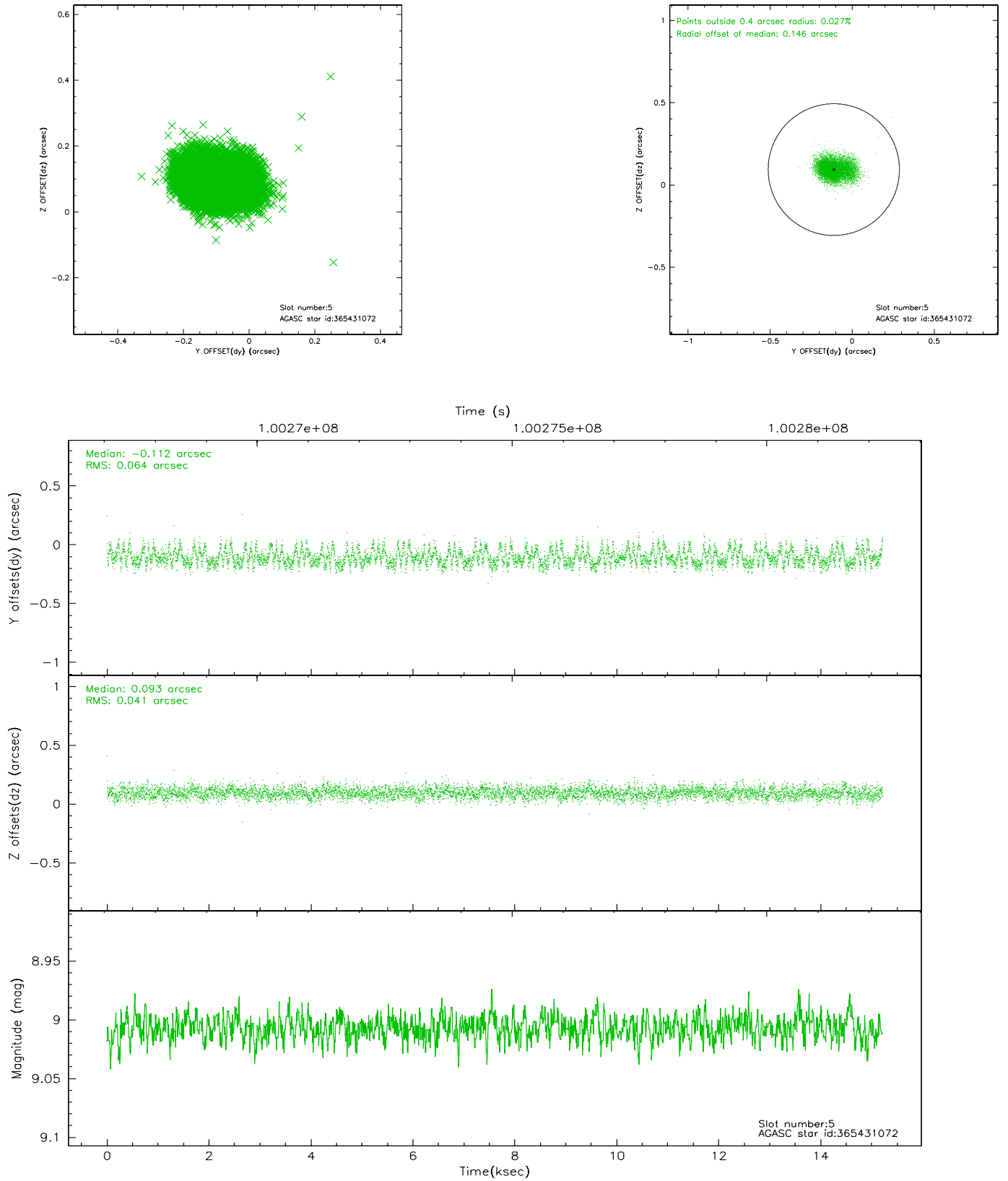
2.4.1 Slot 3



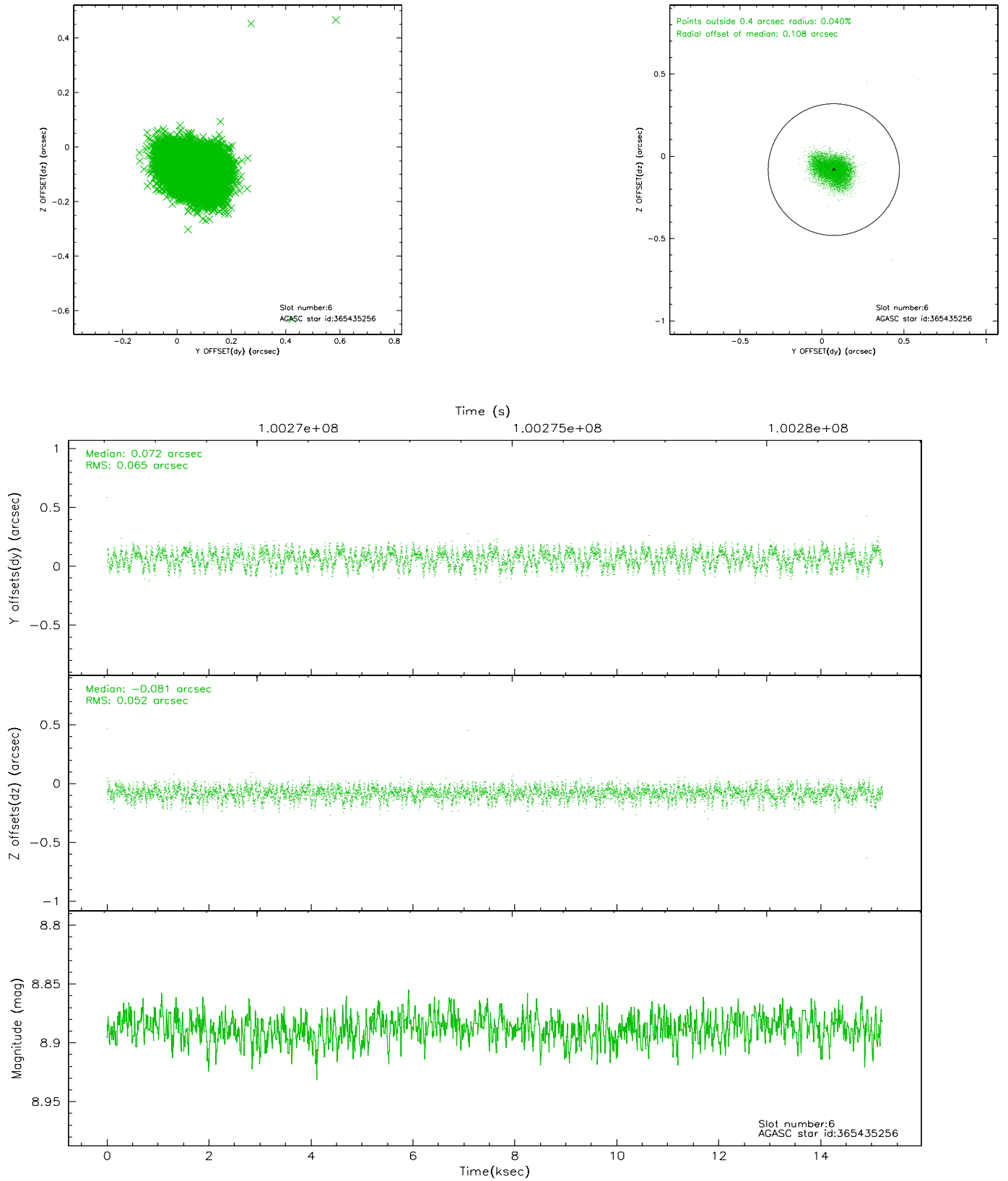
2.4.2 Slot 4



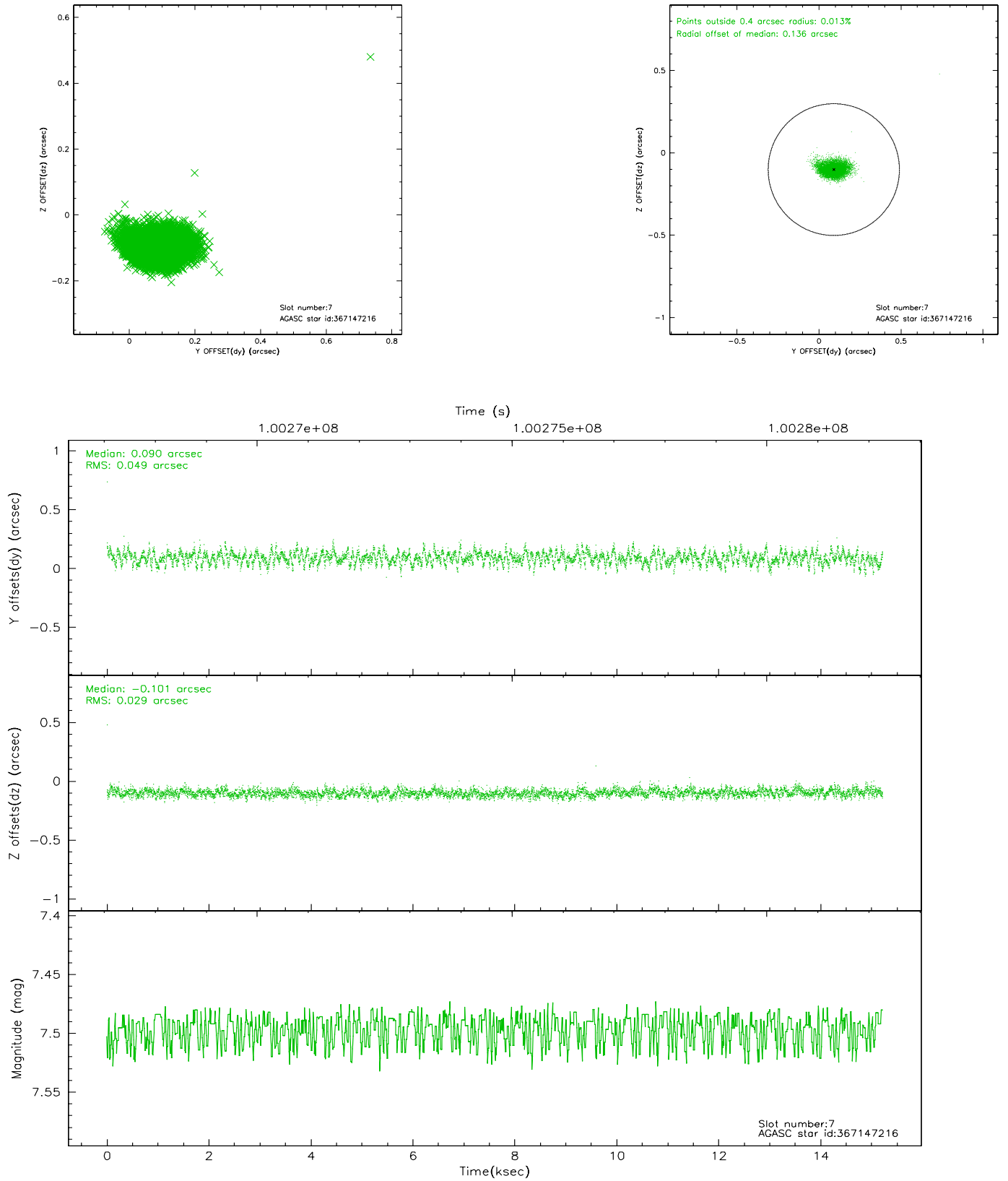
2.4.3 Slot 5



2.4.4 Slot 6

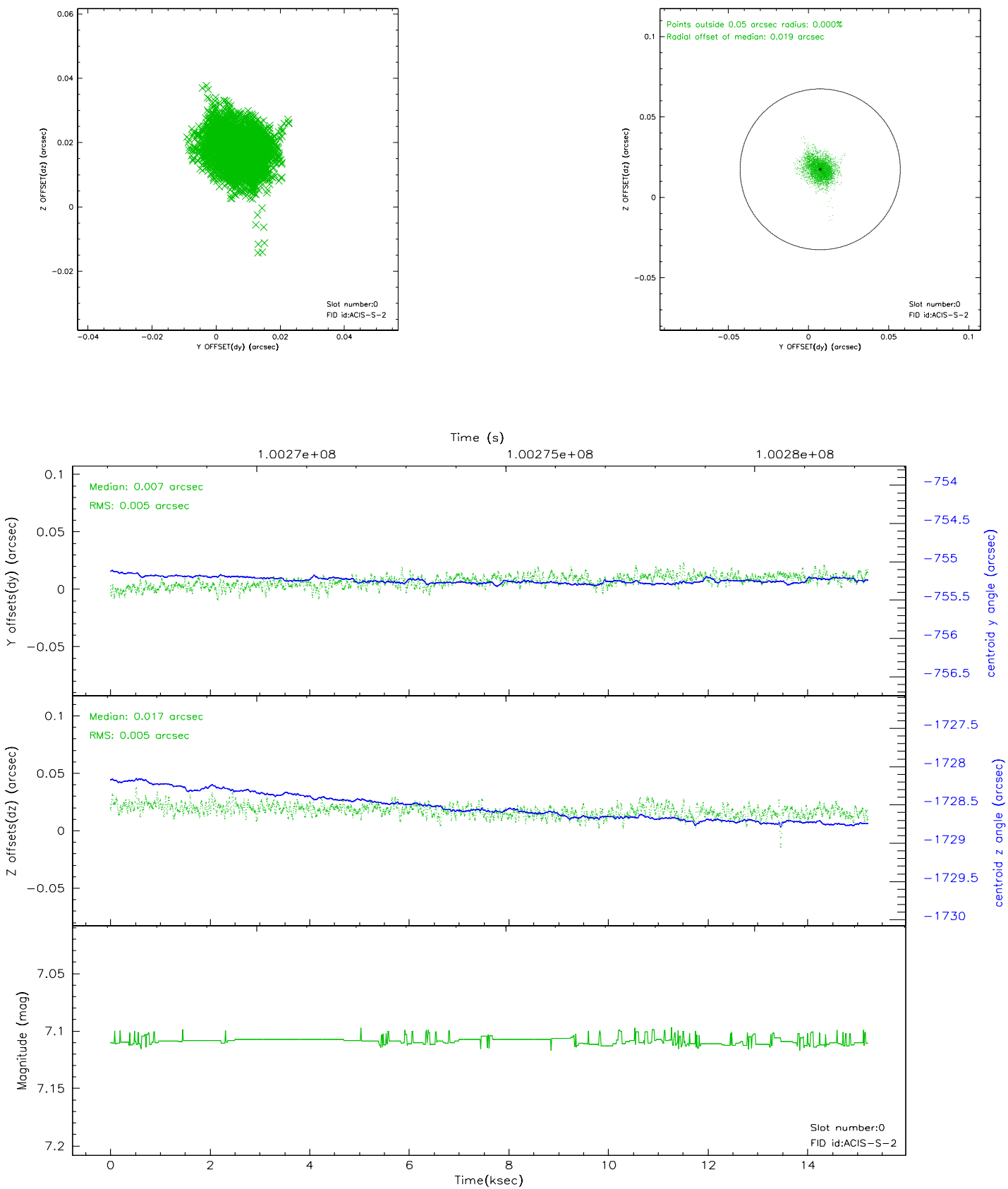


2.4.5 Slot 7

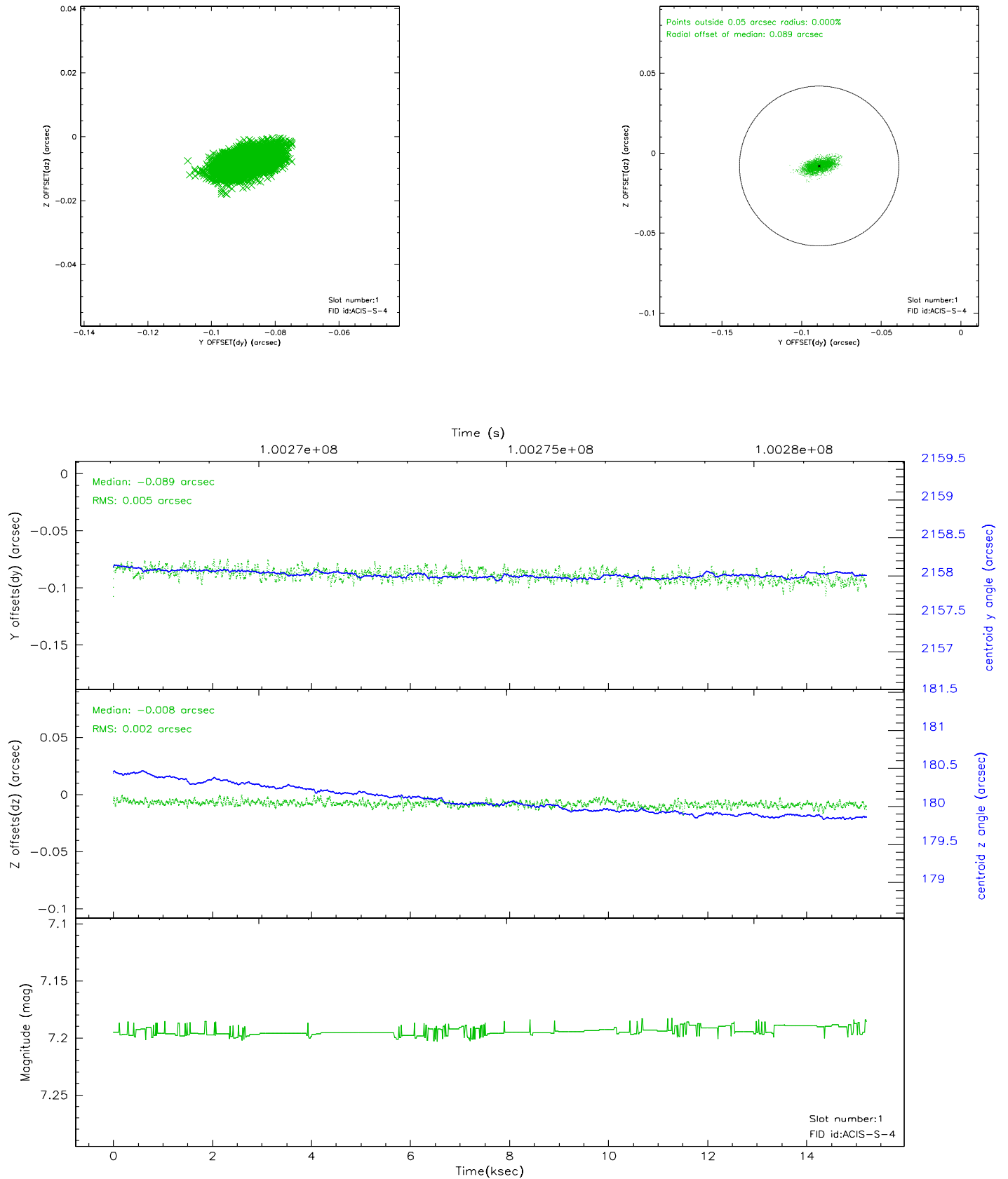


2.5 FID Slots

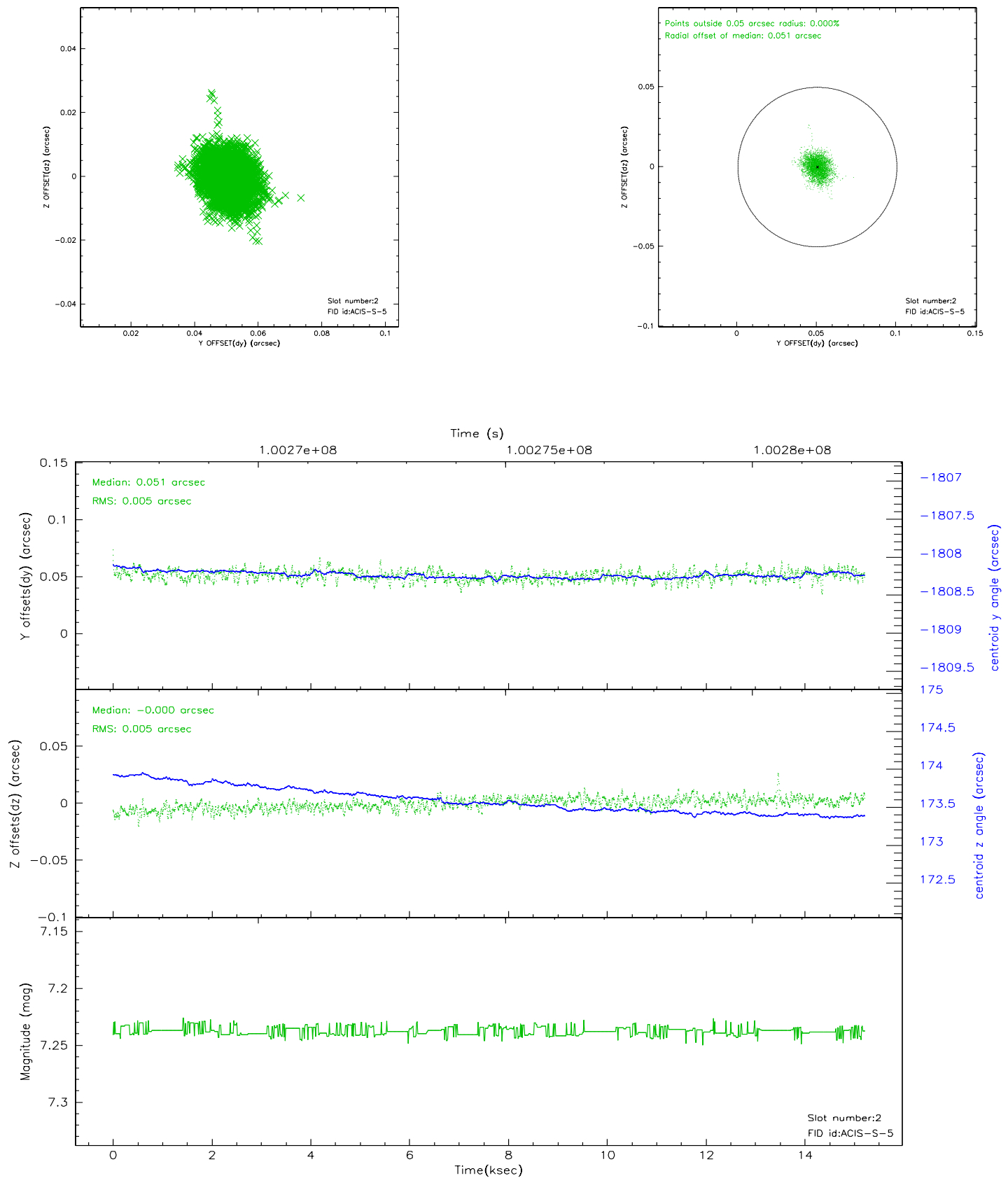
2.5.1 Slot 0



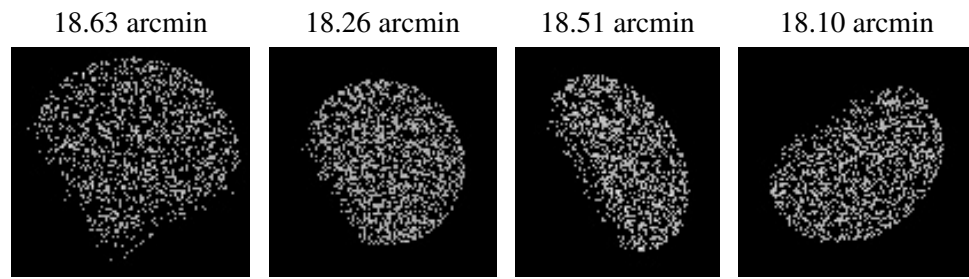
2.5.2 Slot 1



2.5.3 Slot 2



3 Point Sources



A Summary

A.1 Status

V&V Scientist	Jen Lauer
V&V Date (YYYY-MM-DD)	2006.11.08
V&V Edition	1
V&V Disposition and Status	OK
V&V Charge Time	14.774

A.2 Comments

Monitor constraint met.