

V&V Reference Report

L2 ASCDS Version : 10.4.3.1

Observation 18827 - L2 Version 1
Chandra X-Ray Center

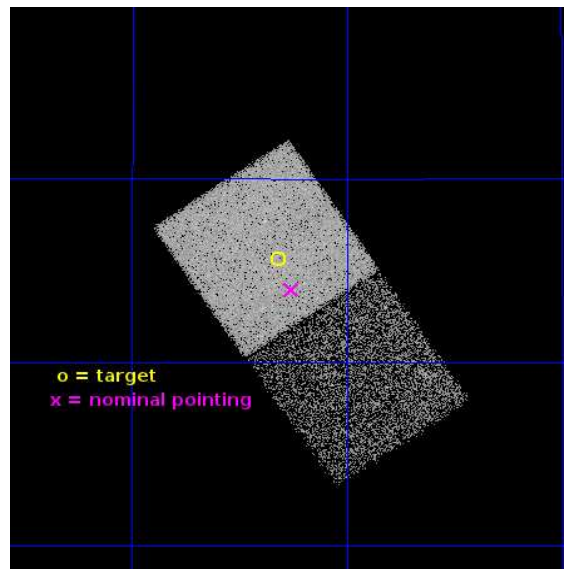
L2 Processing Date : Apr 20 2016

Contents

1	Front	2
2	OBI	3
2.1	OBI	3
2.1.1	Images	3
2.1.2	Bias	3
2.1.3	Parameters	4
2.1.4	Events	4
2.2	Compared Parameters	5
2.3	Aspect	6
2.4	Star Slots	9
2.4.1	Slot 3	9
2.4.2	Slot 4	10
2.4.3	Slot 5	11
2.4.4	Slot 6	12
2.4.5	Slot 7	13
2.5	FID Slots	14
2.5.1	Slot 0	14
2.5.2	Slot 1	15
2.5.3	Slot 2	16
A	Summary	17
A.1	Status	17
A.2	Comments	17

1 Front

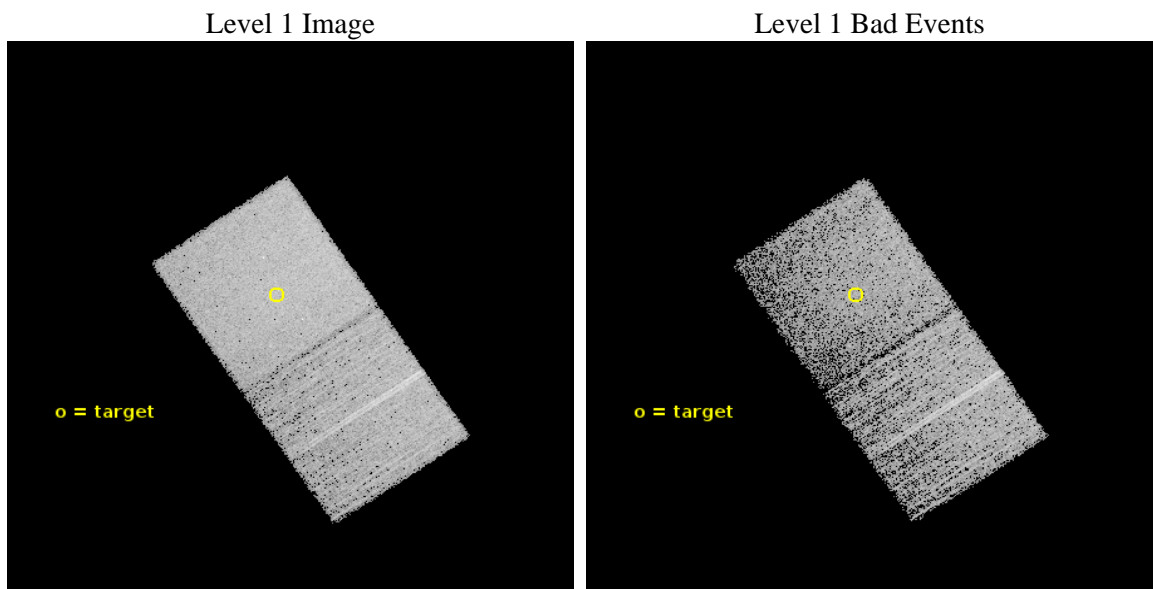
seq_num	502663	Sequence number
obs_id	18827	Observation id
title	Understanding the Mass-Loss History of the Progenitors of Type II _n Supernovae: SN 2016bkv	Proposal title
observer	Daniel Patnaude	Principal investigator
object	SN2016bkv	Source name
dtcycle	0	
cycle	P	events from which exps? Prim/Second/Both
ra_targ	154.580417	Observer's specified target RA [deg]
dec_targ	41.427583	Observer's specified target Dec [deg]
ra_nom	154.56452420209	Nominal RA [deg]
dec_nom	41.399457616497	Nominal Dec [deg]
roll_nom	236.03706398899	Nominal Roll [deg]
revision	1	Processing version of data
ontime	15081.0	Sum of GTIs [s]
livetime	14877.476126588	Livetime [s]
ontime6	15081.0	Sum of GTIs [s]
ontime7	15081.0	Sum of GTIs [s]
l2events	61661	Number of level 2 events



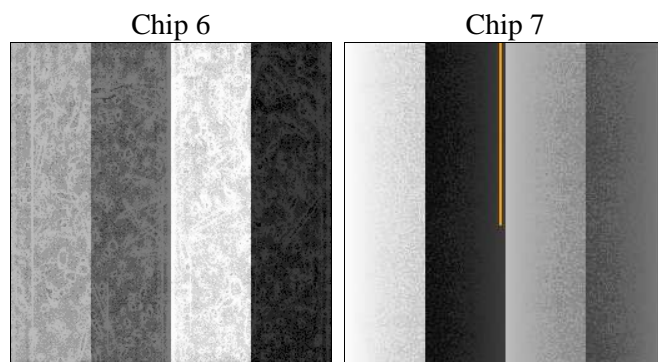
2 OBI

2.1 OBI

2.1.1 Images



2.1.2 Bias



2.1.3 Parameters

obi_num	0	Obi number	sched_exp_time	15000.000000	[s] Scheduled observation exposure time
ascdsver	10.4.3.1	Processing system revision	ontime	15081.0	Sum of GTIs [s]
caldsver	4.7.1	 	ontime6	15081.0	Sum of GTIs [s]
date	2016-04-20T15:54:33	Date and time of file creation	ontime7	15081.0	Sum of GTIs [s]
revision	1	Processing version of data	l1events	215717	Number of level 1 events

2.1.4 Events

	ccd 6	ccd 7
level 1 events	94667	121050
rejected events	83970	67326
rejected %	88%	55%

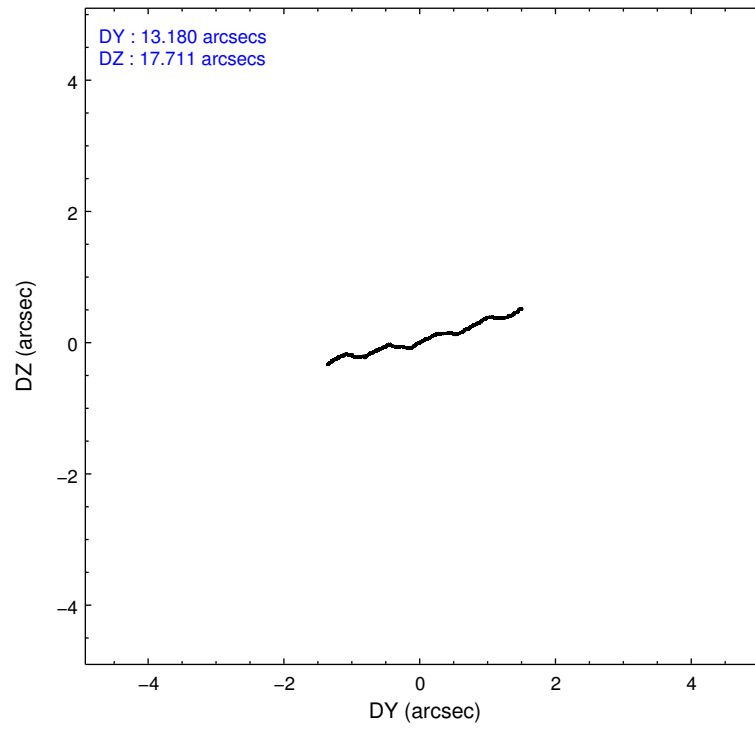
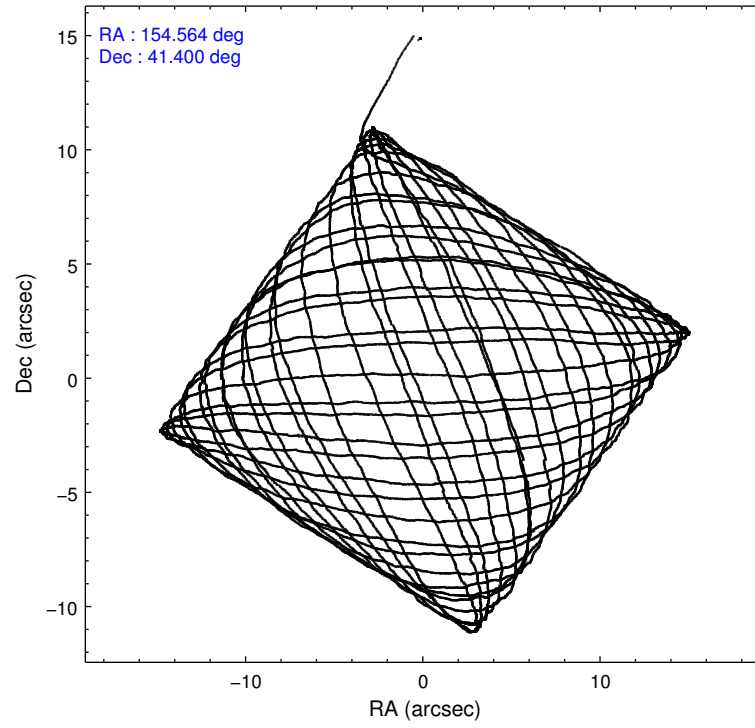
	ccd 6	ccd 7
grade 0 events	3592	4826
	3%	3%
grade 1 events	37	157
	0%	0%
grade 2 events	2499	11226
	2%	9%
grade 3 events	1123	4580
	1%	3%
grade 4 events	1024	4492
	1%	3%
grade 5 events	4506	12399
	4%	10%
grade 6 events	2462	28615
	2%	23%
grade 7 events	79424	54755
	83%	45%

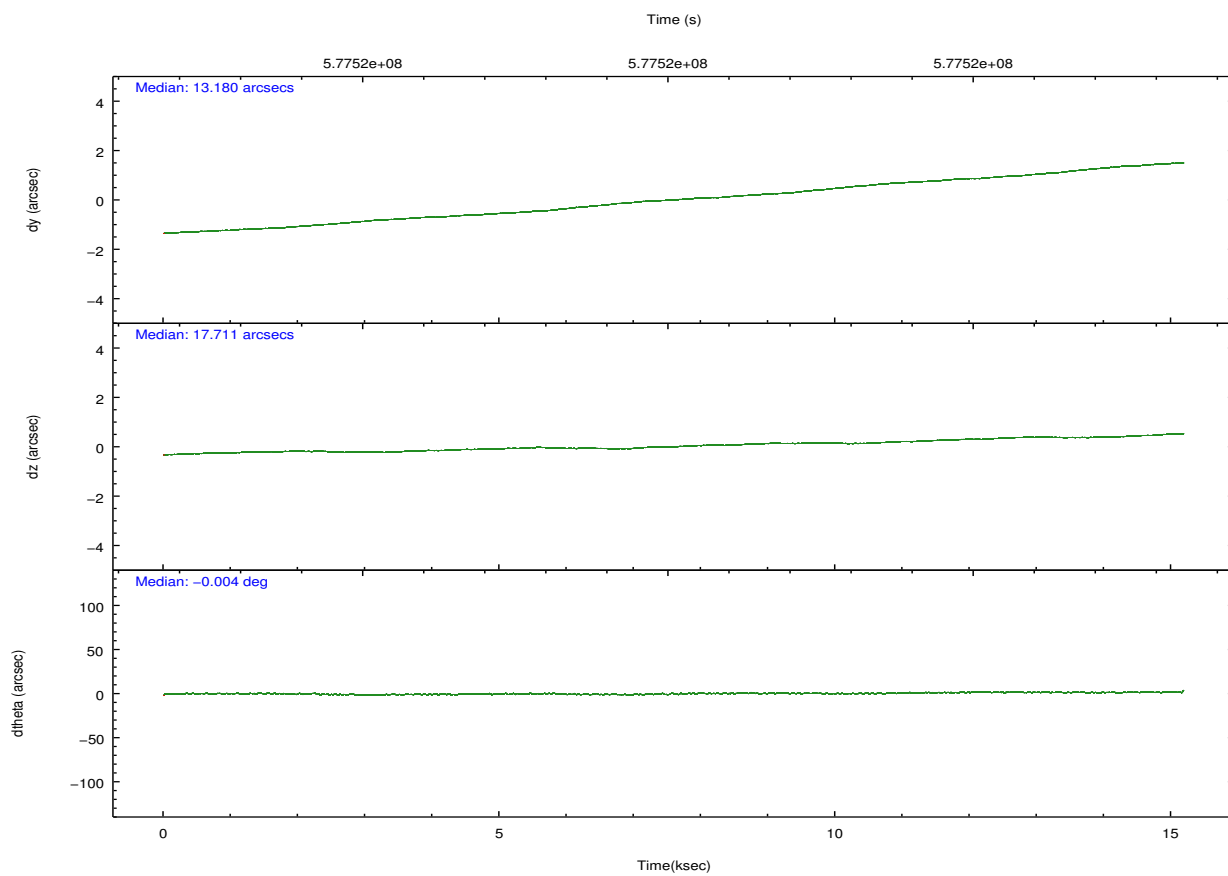
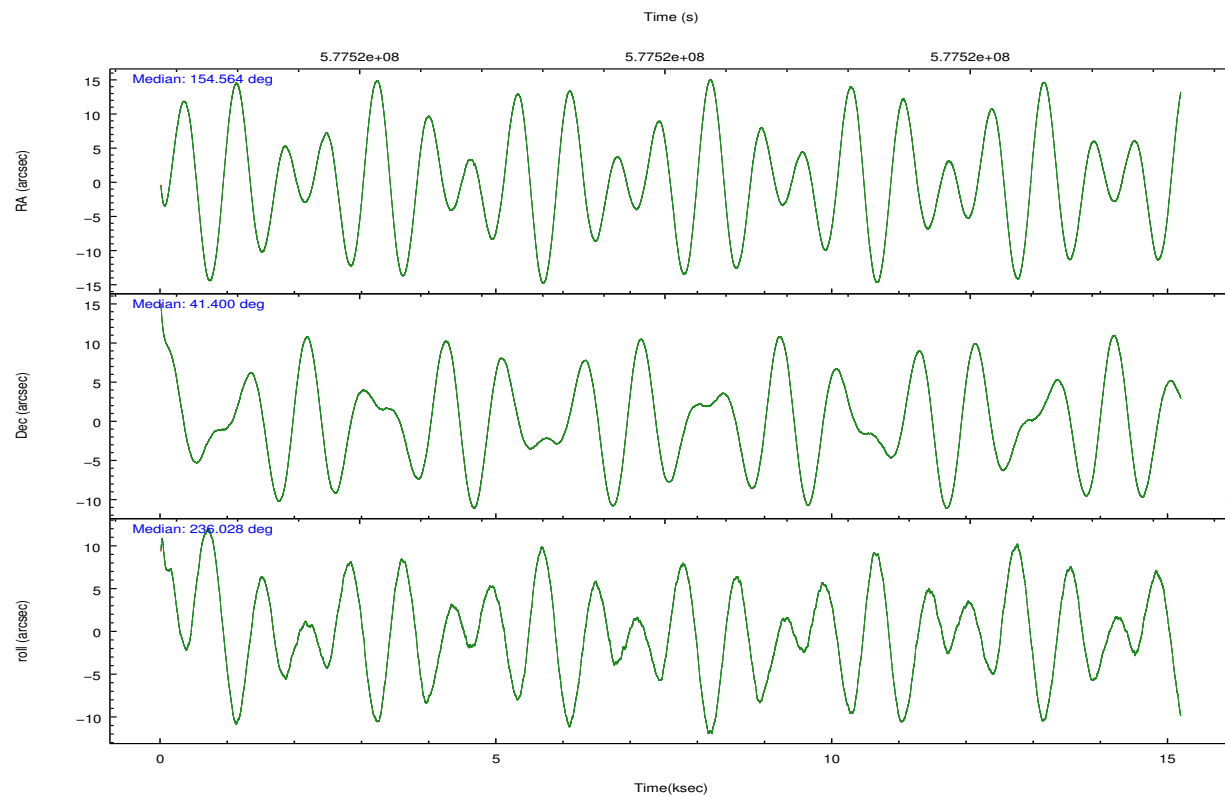
2.2 Compared Parameters

Parameter	Planned	Actual
Instrument	ACIS	ACIS
Detector	ACIS-67	ACIS-67
Grating	NONE	NONE
Data mode	VFAINT	VFAINT
Observation mode	POINTING	POINTING
[deg] Pointing RA	154.566568	154.5645242020933
[deg] Pointing Dec	41.426829	41.39945761649727
[deg] Pointing Roll	235.879080	236.0370639889918
[mm] SIM focus pos	-0.684267	-0.6828225247311905
[mm] SIM defocus	0	0.001444936568705701
[mm] SIM translation stage pos	-190.132523	-190.1400660498719
[mm] SIM translation stage offset	0	0.00754346686406393
[s] Observation start time (MET)	577512708.184000	577511557.31748
Observation start date	2016-04-20T04:10:40	2016-04-20T03:52:37
[s] Observation end time (MET)	577527708.184000	577528331.4434299
Observation end date	2016-04-20T08:20:40	2016-04-20T08:32:11
Read mode	TIMED	TIMED

Parameter	Planned	Actual
Obspar format version number	7	7
Obspar file type	PREDICTED	ACTUAL
Obspar update status	NONE	UPDATED
Number of optional ACIS chips dropped	0	0
On-chip summing requested	N	N
Subarray requested	NONE	NONE
Alternating exposures requested	N	N
[s] Primary exposure time	0.000000	3

2.3 Aspect



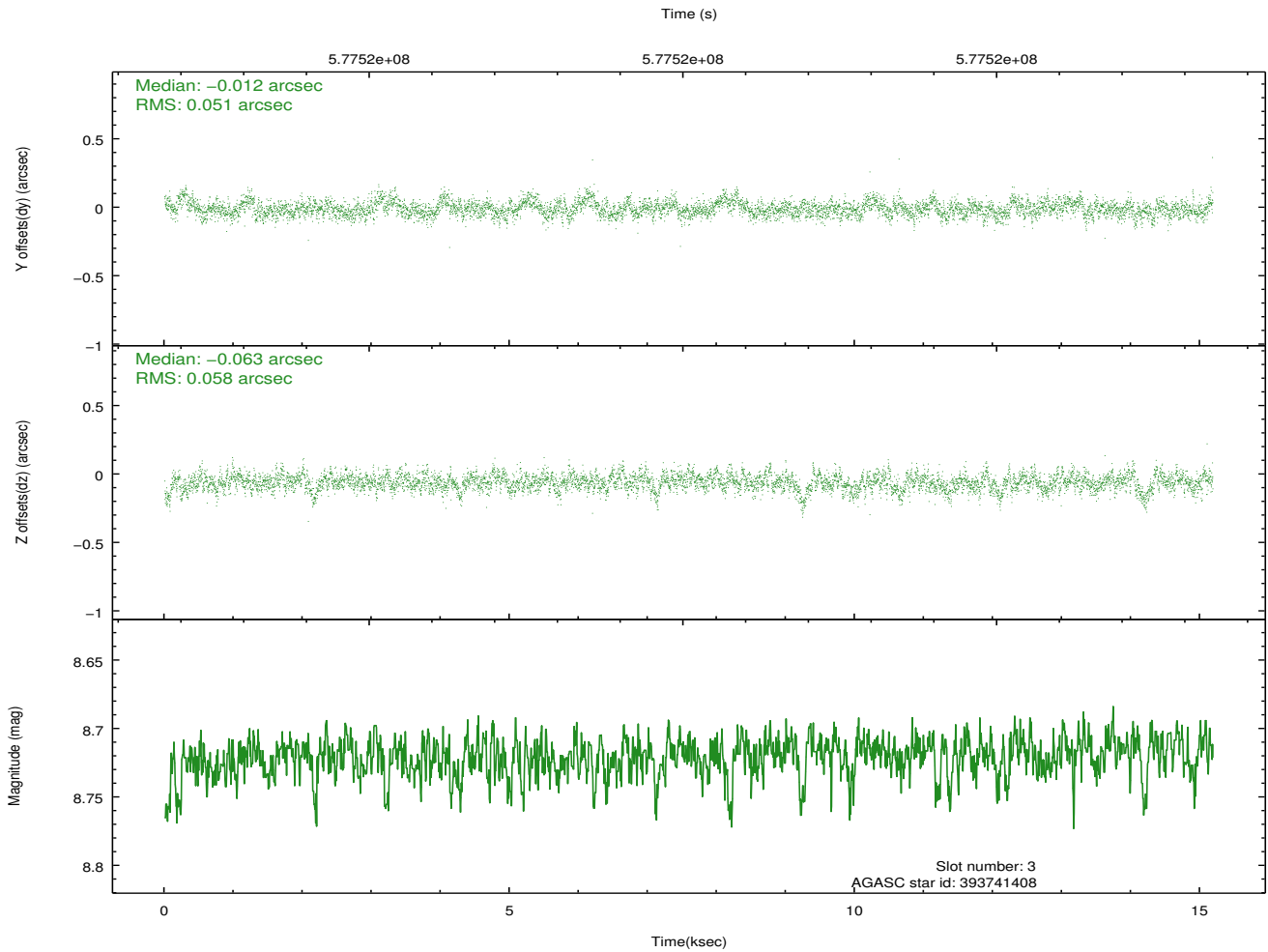
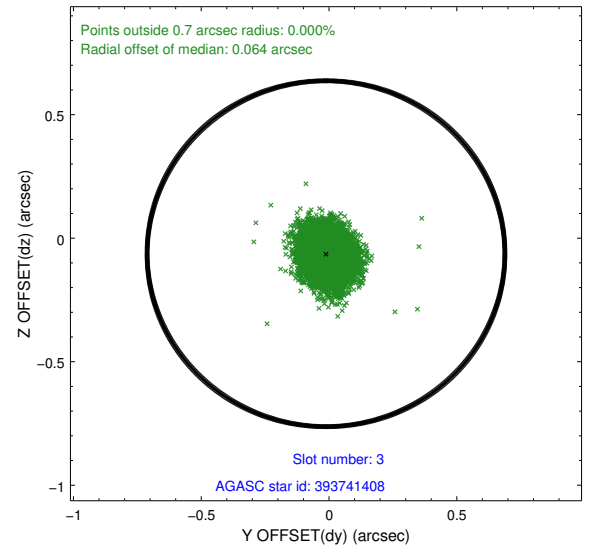
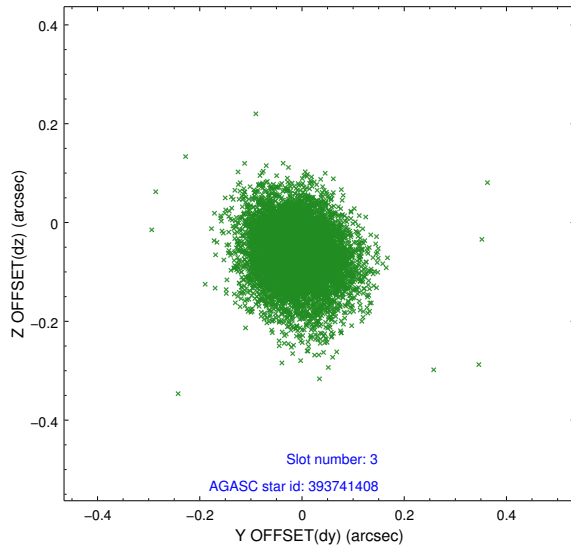


Slot Statistics

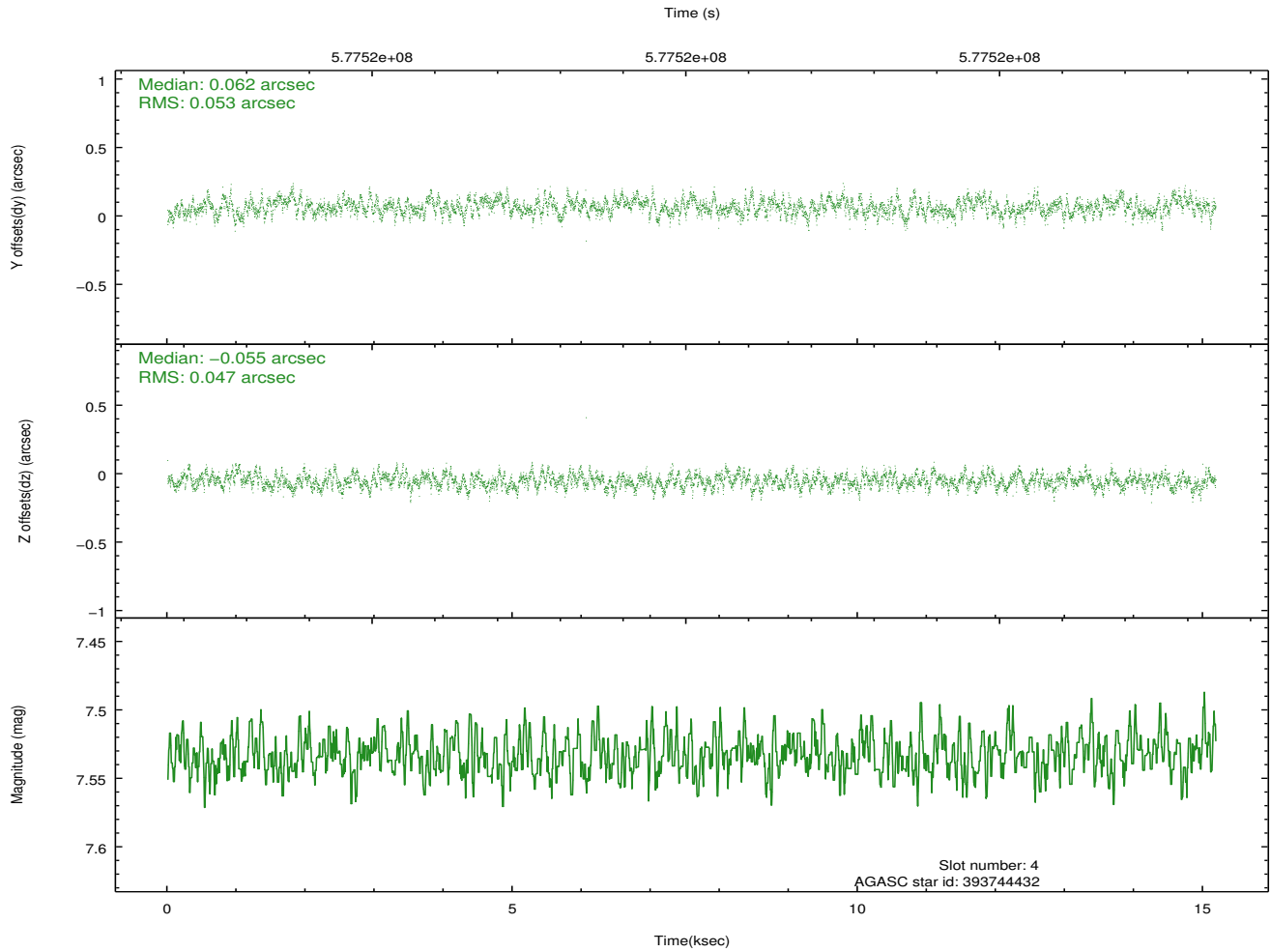
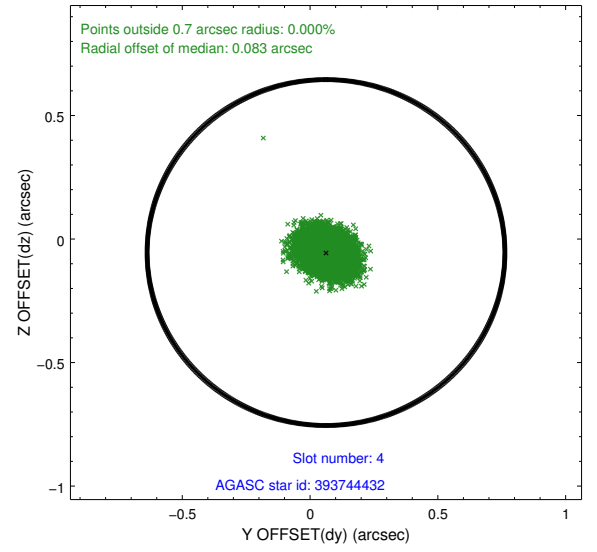
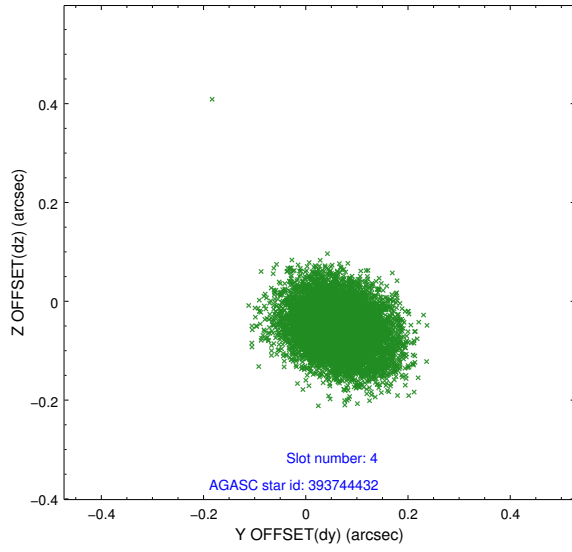
slot	status	used	id	mag	n_pts	med_dy	med_dz	dr1	dr2	ra	dec	mean_y	mean_z
0	FID		ACIS-S-2	7.10	3704	-0.123	-0.130	0.028	0.055	0.000000	0.000000	-766.25	-1739.34
1	FID		ACIS-S-4	7.21	3704	0.414	0.092	0.037	0.058	0.000000	0.000000	2147.45	169.05
2	FID		ACIS-S-5	7.23	3704	-0.321	0.041	0.017	0.040	0.000000	0.000000	-1818.89	163.01
3	GUIDE	used	393741408	8.72	7400	-0.012	-0.063	0.081	0.136	155.277424	41.211418	-443.49	2024.44
4	GUIDE	used	393744432	7.53	7407	0.062	-0.055	0.076	0.122	154.158907	41.275848	1067.14	-608.40
5	GUIDE	used	393750208	9.12	7404	0.148	0.048	0.111	0.190	154.121764	41.410175	721.67	-961.87
6	GUIDE	used	393750360	8.75	7401	0.077	-0.089	0.115	0.175	154.163124	41.305451	972.45	-658.73
7	GUIDE	used	393740640	7.22	7337	-0.283	0.159	0.075	0.135	155.265288	41.849393	-2316.51	693.76

2.4 Star Slots

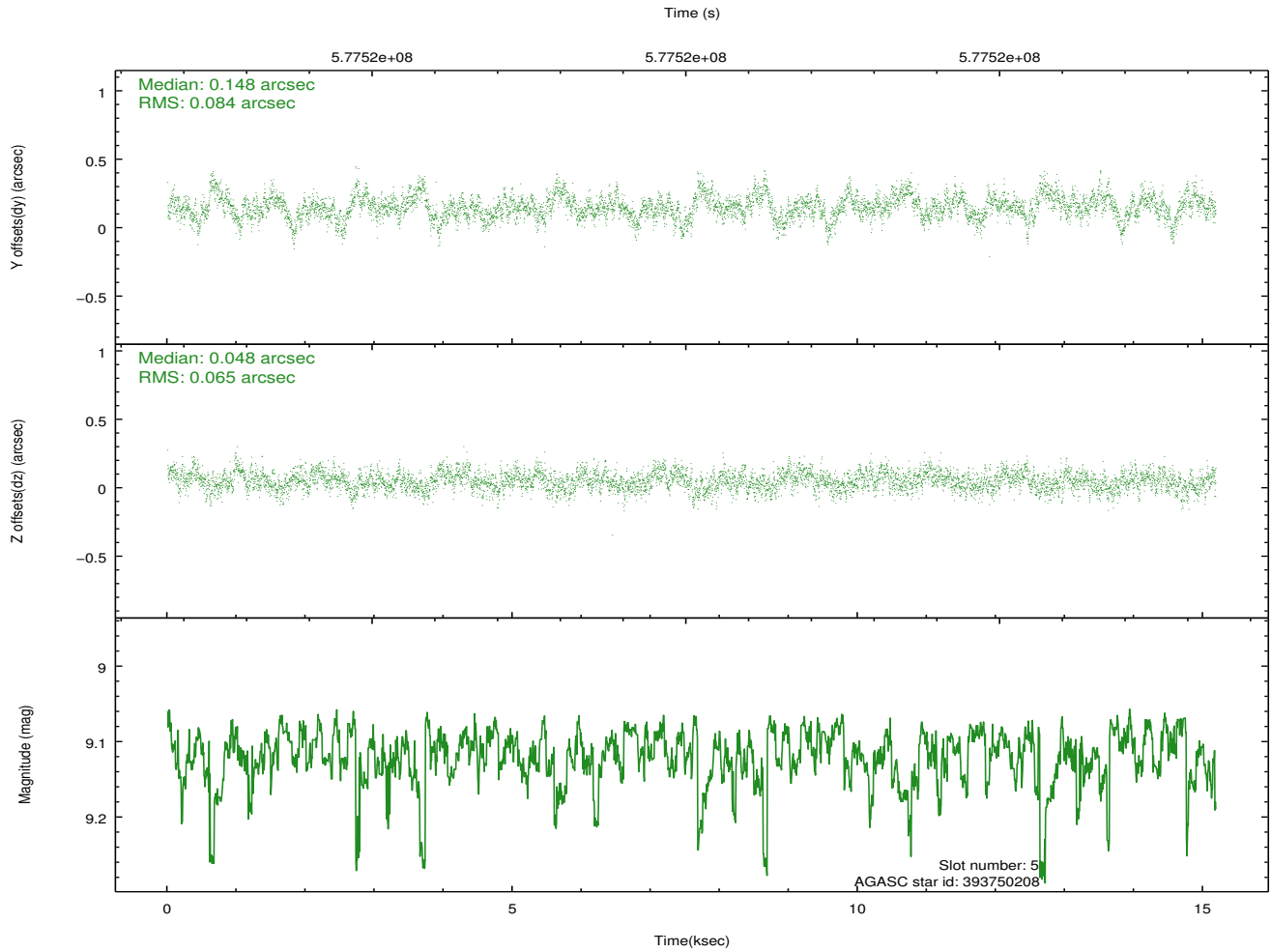
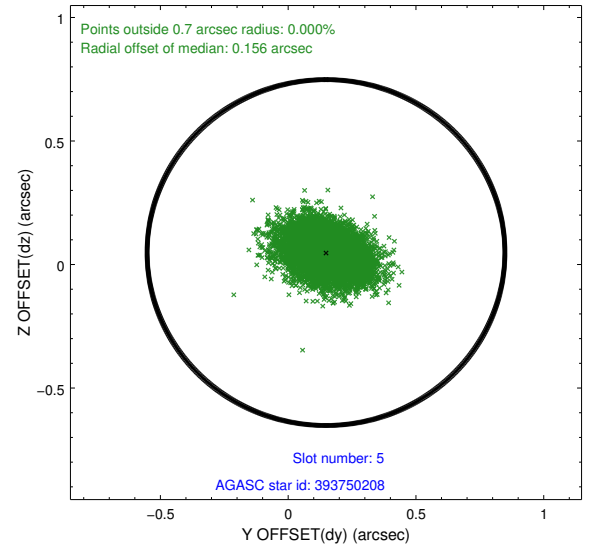
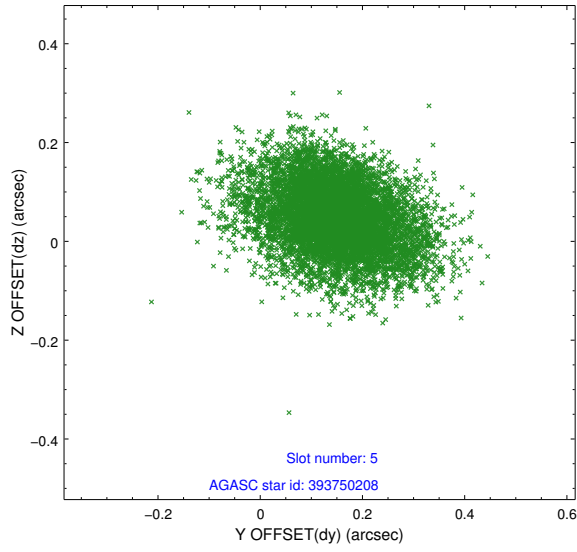
2.4.1 Slot 3



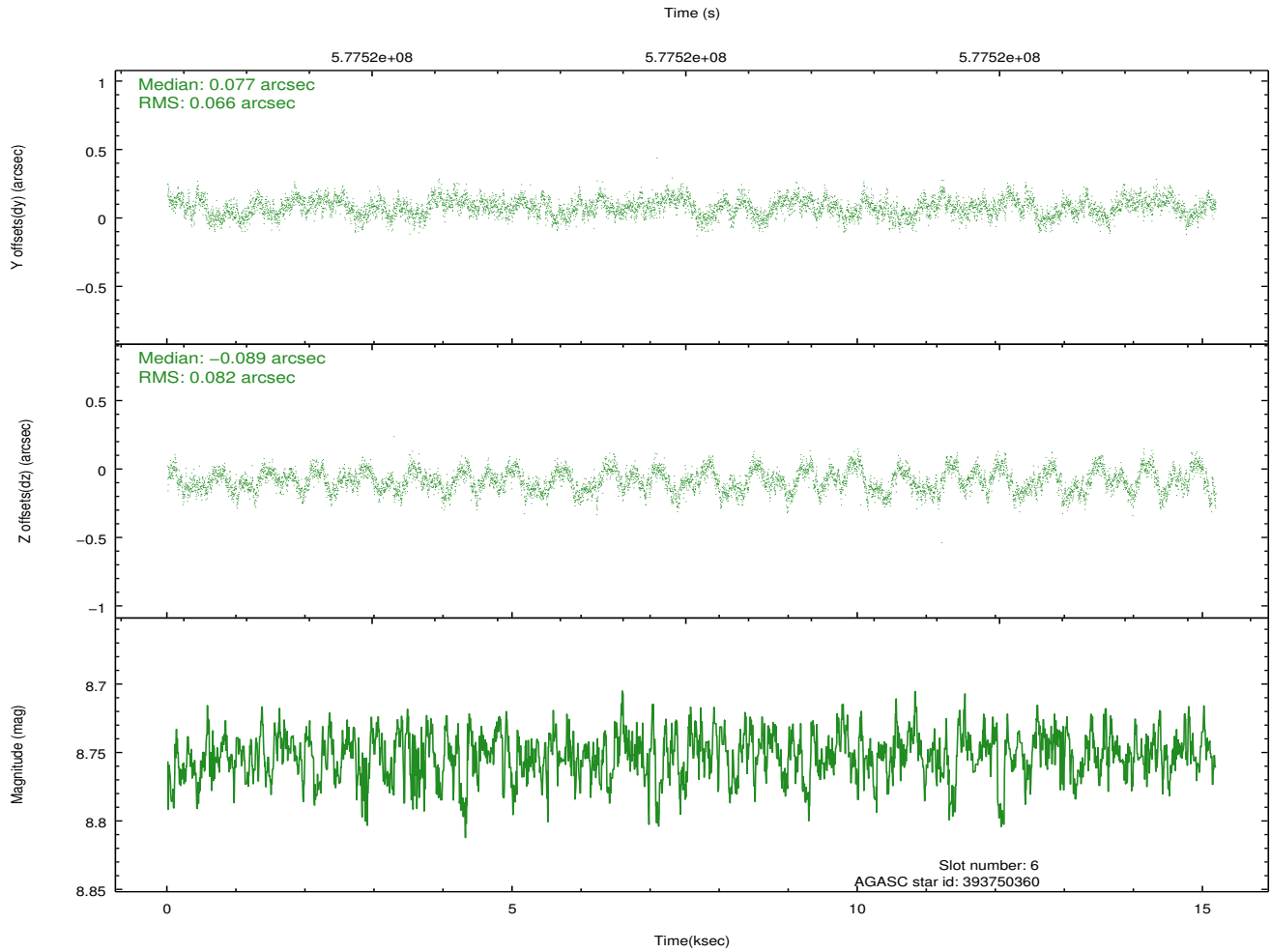
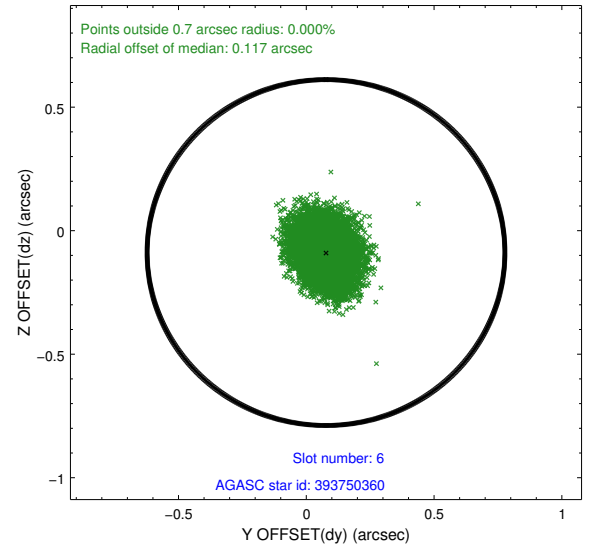
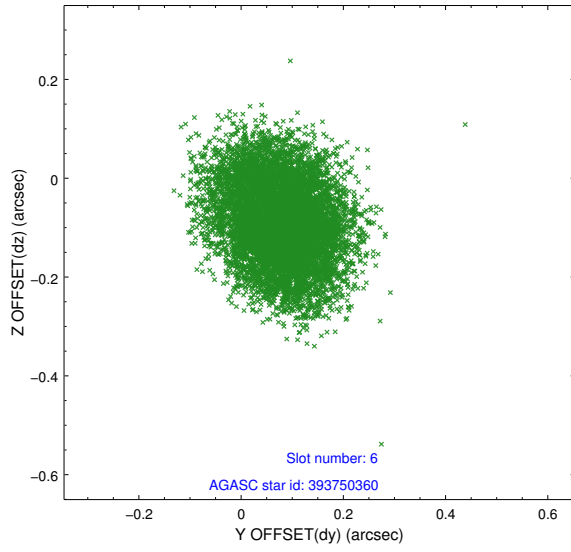
2.4.2 Slot 4



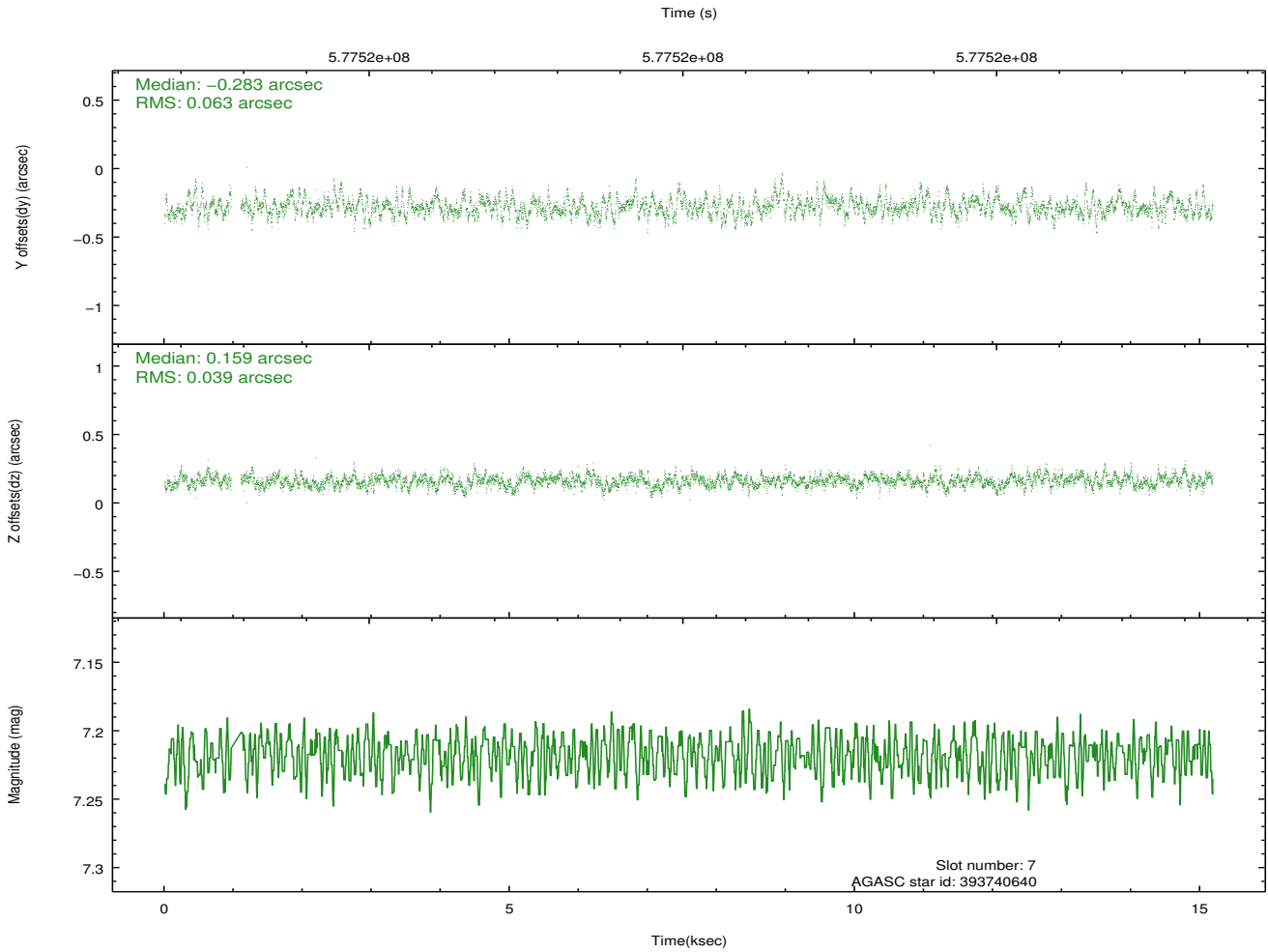
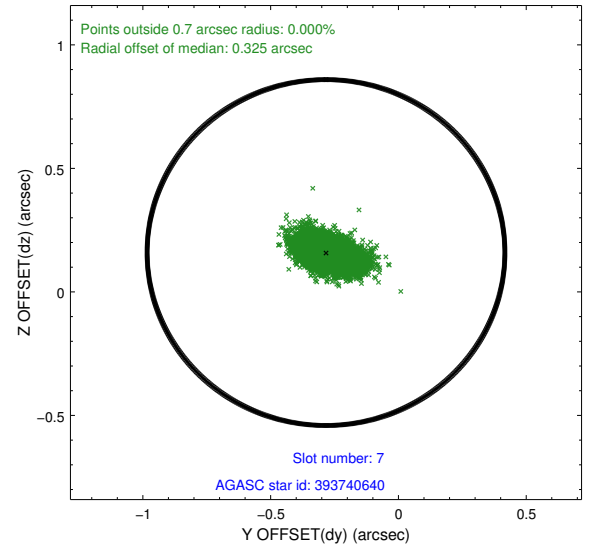
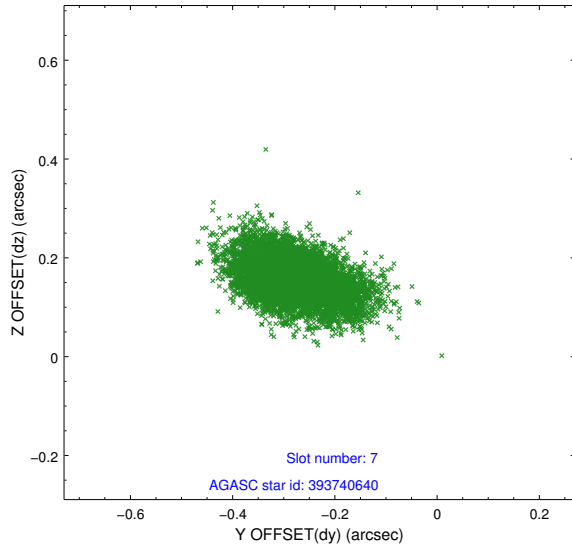
2.4.3 Slot 5



2.4.4 Slot 6

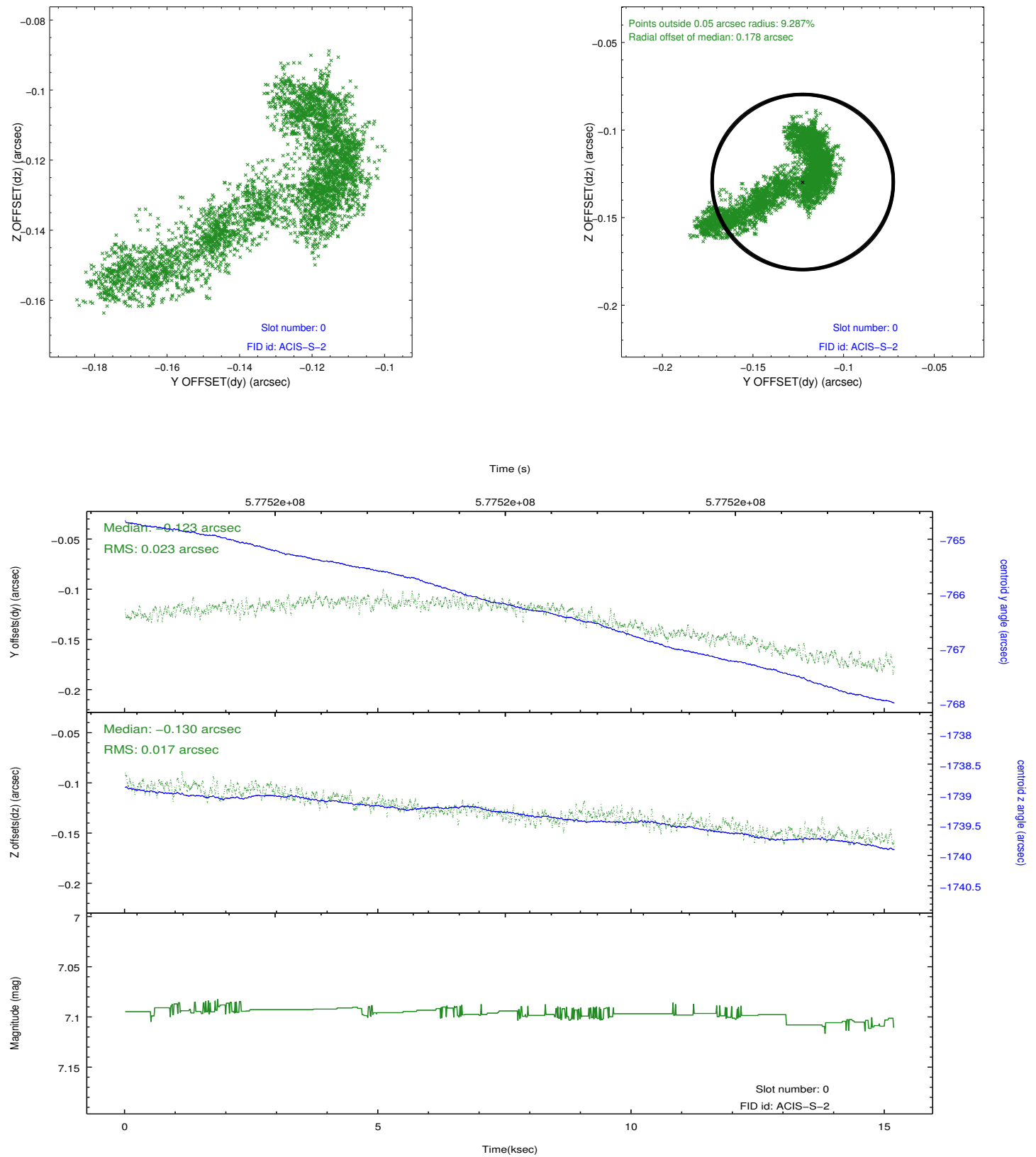


2.4.5 Slot 7

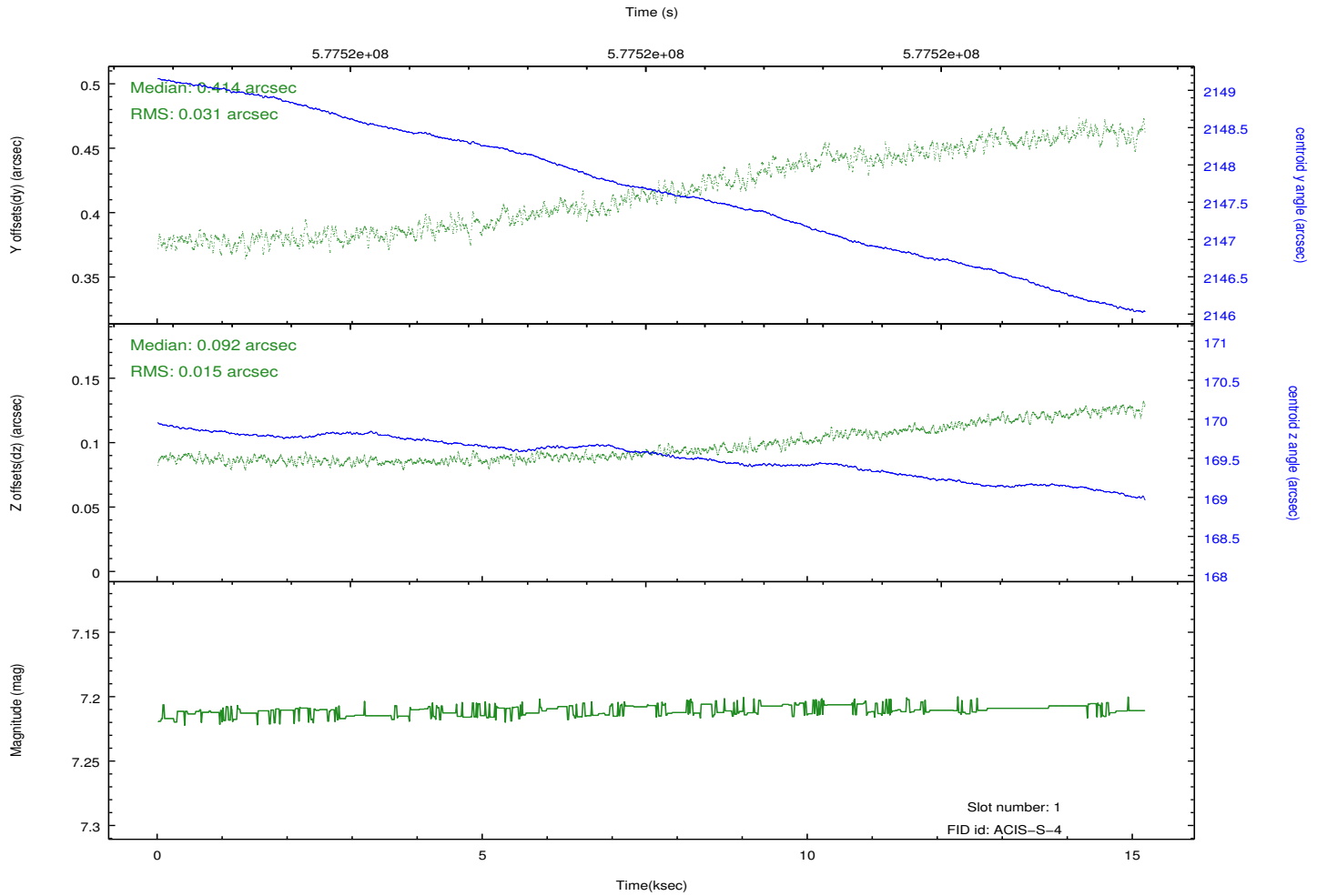
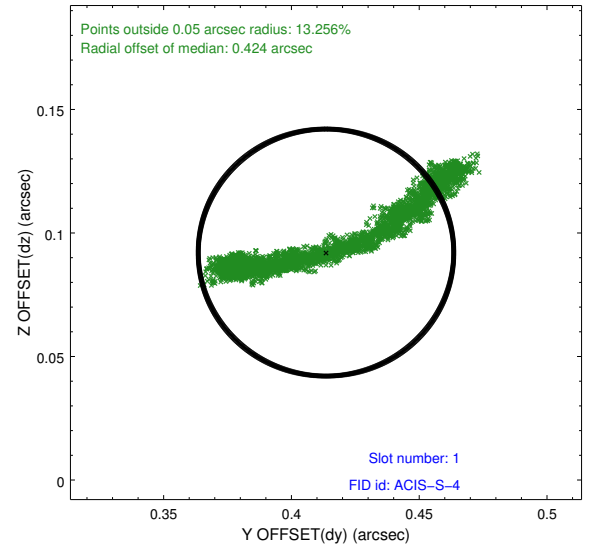
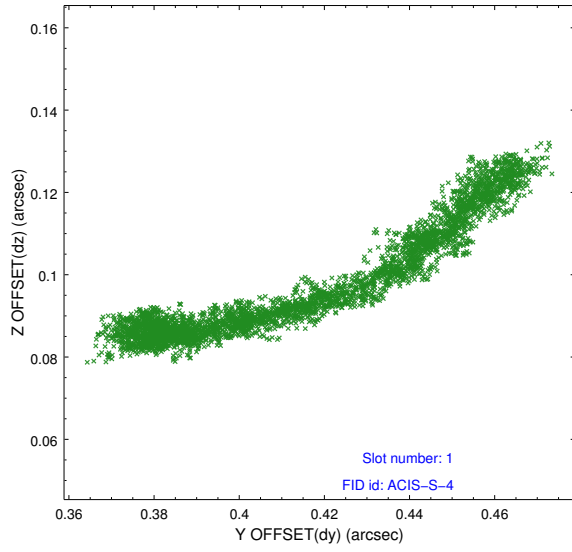


2.5 FID Slots

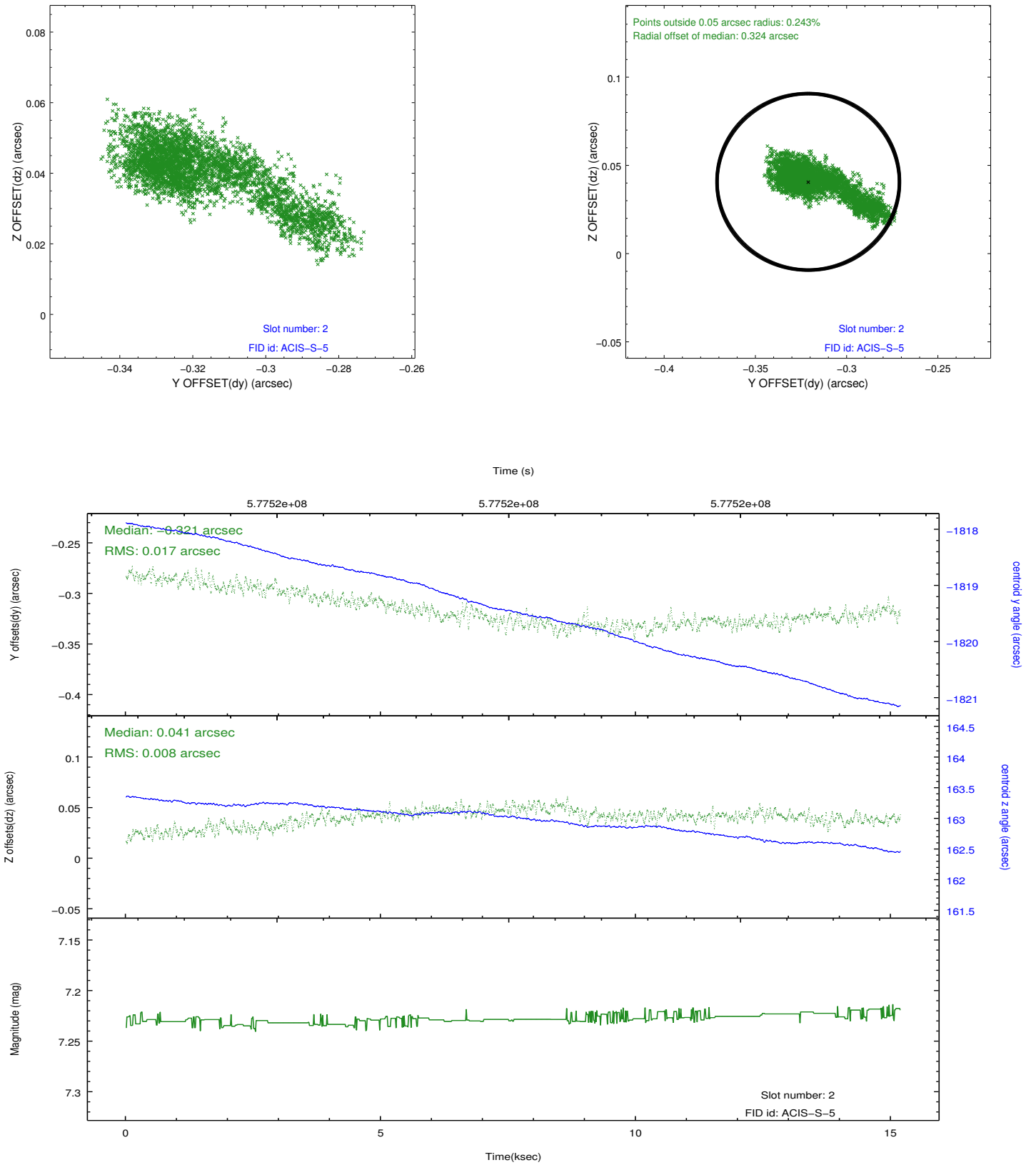
2.5.1 Slot 0



2.5.2 Slot 1



2.5.3 Slot 2



A Summary

A.1 Status

V&V Scientist	Jen Lauer
V&V Date (YYYY-MM-DD)	2016.04.20
V&V Edition	1
V&V Disposition and Status	OK
V&V Charge Time	15.081

A.2 Comments