

V&V Reference Report

L2 ASCDS Version : 7.6.10

Observation 1787 - L2 Version 4
Chandra X-Ray Center

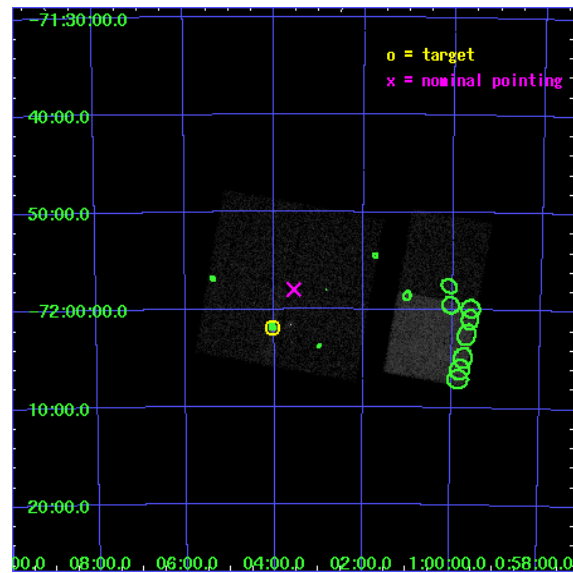
L2 Processing Date : Nov 20 2008

Contents

1	Front	2
2	OBI	3
2.1	OBI	3
2.1.1	Images	3
2.1.2	Bias	3
2.1.3	Parameters	4
2.1.4	Events	4
2.2	Compared Parameters	5
2.3	Aspect	6
2.4	Star Slots	9
2.4.1	Slot 3	9
2.4.2	Slot 4	10
2.4.3	Slot 5	11
2.4.4	Slot 6	12
2.4.5	Slot 7	13
2.5	FID Slots	14
2.5.1	Slot 0	14
2.5.2	Slot 1	15
2.5.3	Slot 2	16
3	Point Sources	17
A	Summary	18
A.1	Status	18
A.2	Comments	18

1 Front

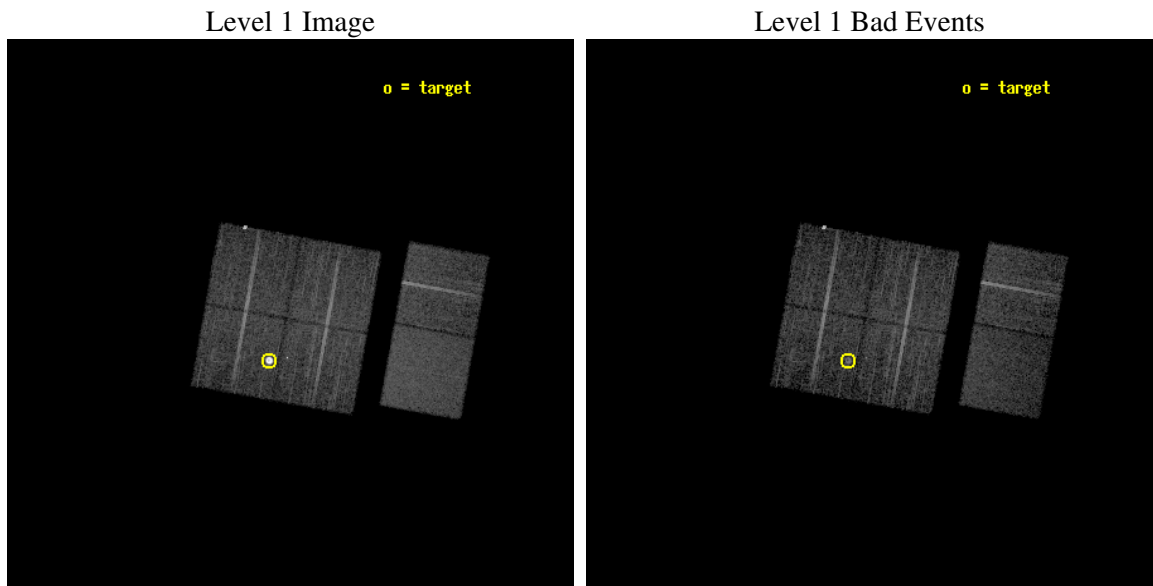
seq_num	590213
obs_id	1787
title	ACIS CHIP RESPONSE TO LINES WITH E=0.6-1.5 KEV
observer	Dr. CXC Calibration
object	E0102-72.3 [Chip I1, T=110, Offsets=-4,-1,0]
dtcycle	0
cycle	P
ra_targ	16.01
dec_targ	-72.032028
ra_nom	15.890377400349
dec_nom	-71.966273308188
roll_nom	100.28396043459
revision	4
ontime	7689.6000071615
livetime	7592.2296617496
ontime0	7686.3590469509
ontime1	7689.6000071615
ontime2	7689.6000071615
ontime3	7689.6000071615
ontime6	7689.6000071615
ontime7	7689.6000071615
l2events	78422



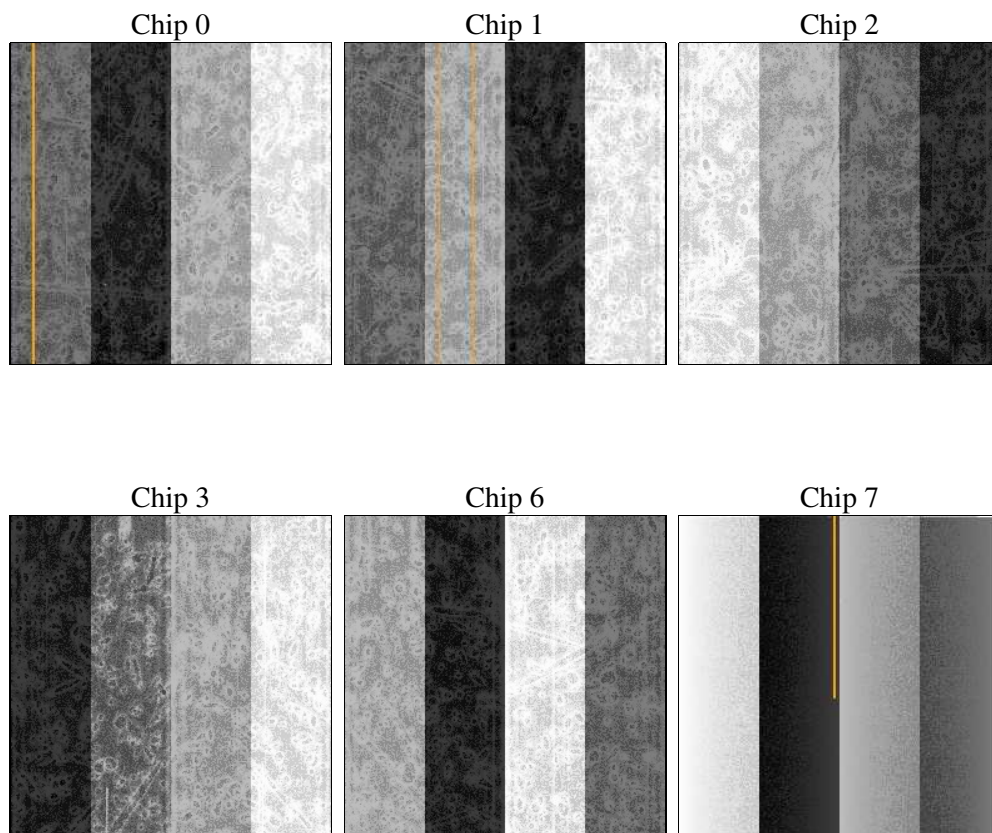
2 OBI

2.1 OBI

2.1.1 Images



2.1.2 Bias



2.1.3 Parameters

obi_num	0
ascdsver	7.6.11.9
caldsver	3.5.0
date	2008-11-20T15:25:23
revision	4

sched_exp_time	7930.065000
ontime	7689.6000071615
ontime0	7686.3590469509
ontime1	7689.6000071615
ontime2	7689.6000071615
ontime3	7689.6000071615
ontime6	7689.6000071615
ontime7	7689.6000071615
l1events	354156

2.1.4 Events

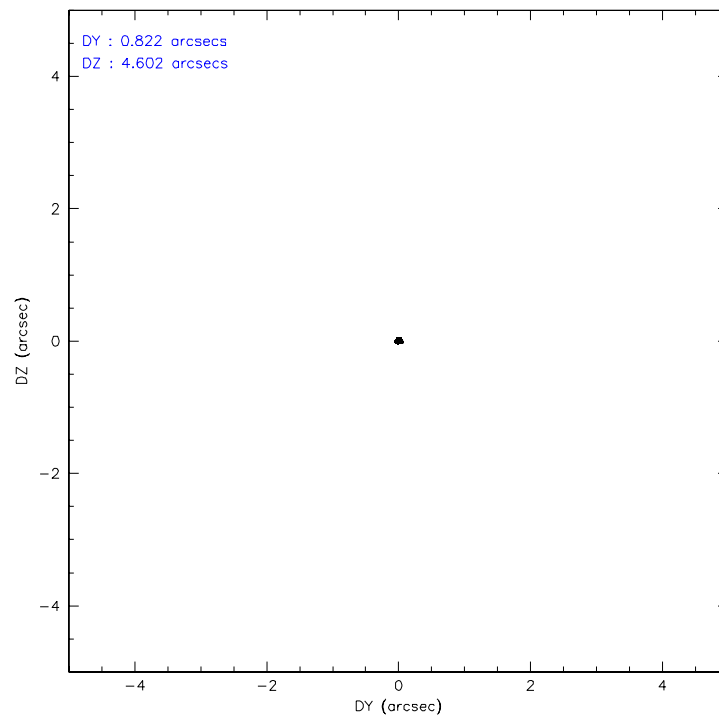
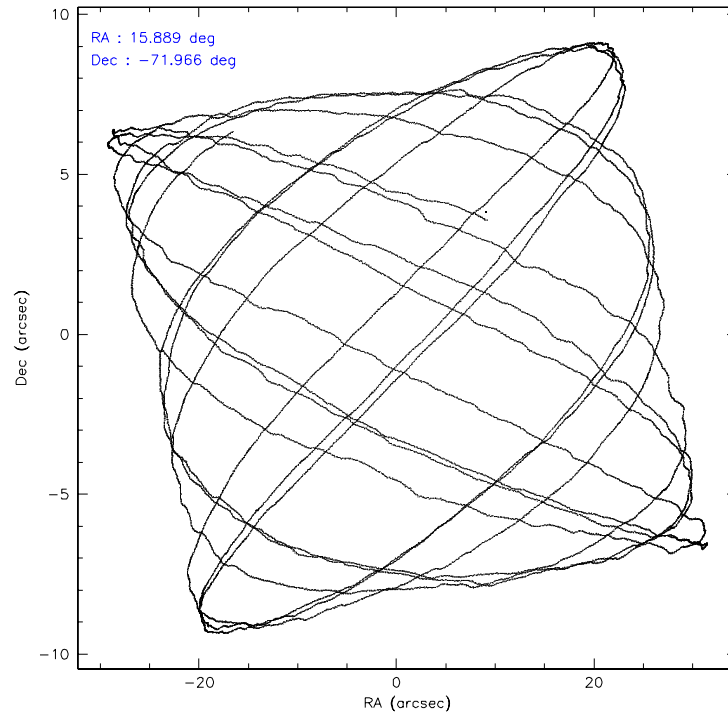
	ccd 0	ccd 1	ccd 2	ccd 3	ccd 6	ccd 7
level 1 events	50585	78341	55569	54375	53318	61968
rejected events	45195	43796	50255	48130	47755	37327
rejected %	89%	55%	90%	88%	89%	60%

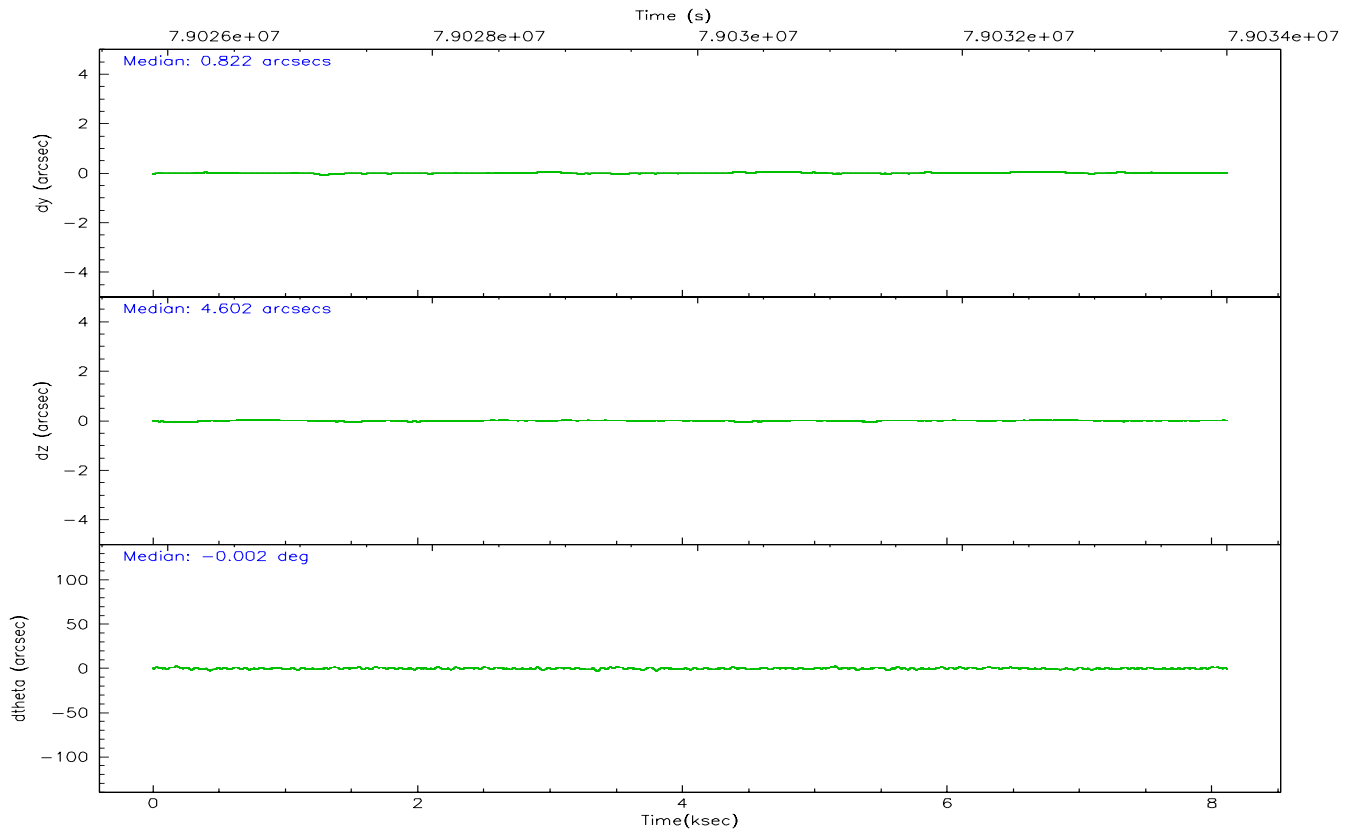
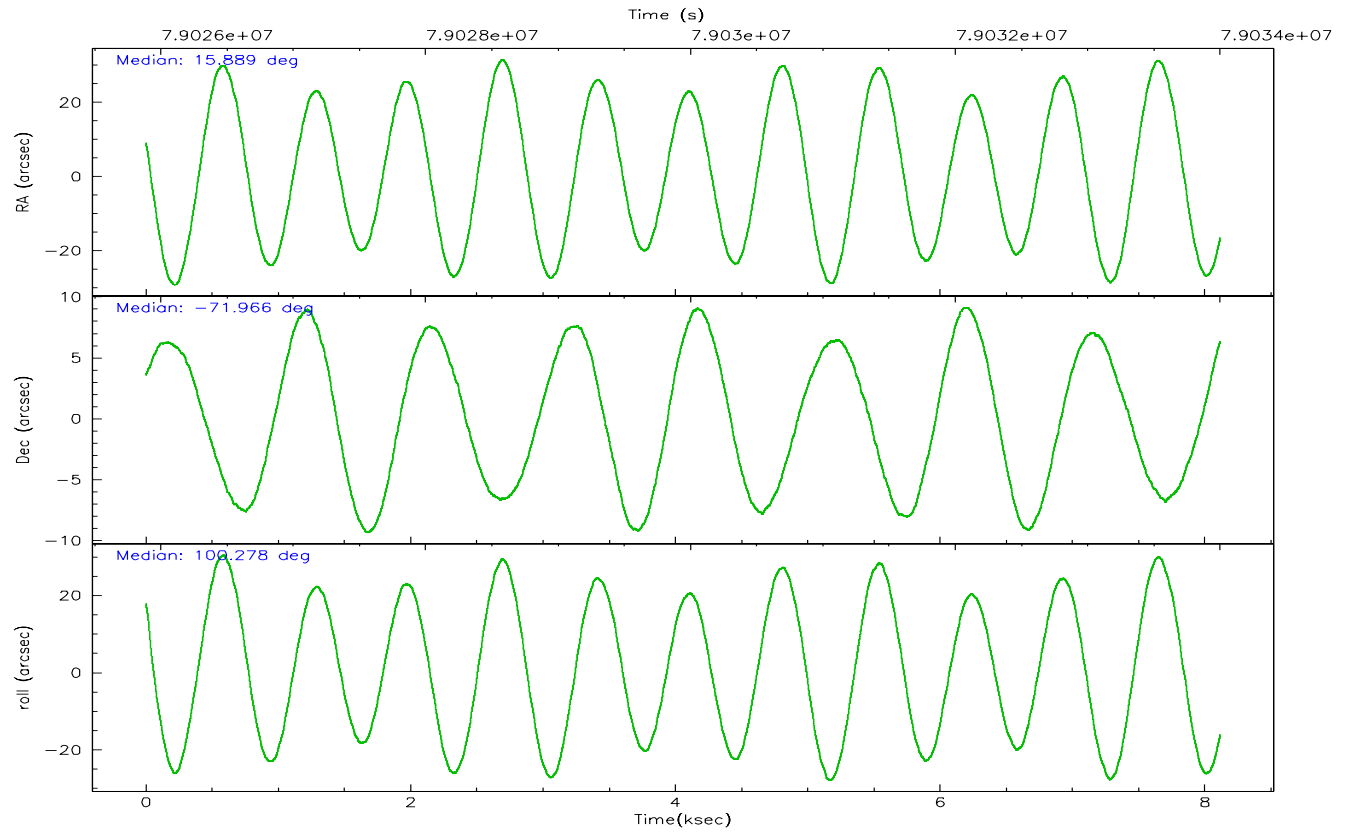
	ccd 0	ccd 1	ccd 2	ccd 3	ccd 6	ccd 7
grade 0 events	1251	26498	1339	1659	1174	1901
	2%	33%	2%	3%	2%	3%
grade 1 events	2307	216	14	19	12	33
	4%	0%	0%	0%	0%	0%
grade 2 events	2134	4632	2026	2437	2119	5221
	4%	5%	3%	4%	3%	8%
grade 3 events	400	866	328	357	331	1451
	0%	1%	0%	0%	0%	2%
grade 4 events	348	900	347	339	329	1376
	0%	1%	0%	0%	0%	2%
grade 5 events	1023	1200	973	1103	1254	3656
	2%	1%	1%	2%	2%	5%
grade 6 events	1261	1677	1275	1459	1612	14716
	2%	2%	2%	2%	3%	23%
grade 7 events	41861	42352	49267	47002	46487	33614
	82%	54%	88%	86%	87%	54%

2.2 Compared Parameters

Parameter	Planned	Actual	Parameter	Planned	Actual
Instrument	ACIS	ACIS	Obspar format version number	6	6
Detector	ACIS-012367	ACIS-012367	Obspar file type	PREDICTED	ACTUAL
Grating	NONE	NONE	Obspar update status	NONE	UPDATED
Data mode	FAINT	FAINT	Number of optional ACIS chips dropped	0	0
Observation mode	POINTING	POINTING	On-chip summing requested	N	N
Pointing RA	15.947893	15.89037740034893	Subarray requested	NONE	NONE
Pointing Dec	-71.987371	-71.96627330818825	Alternating exposures requested	N	N
Pointing Roll	100.129966	100.2839604345866	Primary exposure time	3.200000	3.2
SIM focus pos (mm)	-0.782348	-0.7809083437167272			
SIM defocus (mm)	0	0.001439871863259334			
SIM translation stage pos (mm)	-233.592463	-233.5874344608287			
SIM translation stage offset (mm)	0	-0.005018542100998502			
Observation start time	79026079.184000	79025702.78568999			
Observation start date	2000-07-03T15:40:15	2000-07-03T15:35:02			
Observation end time	79034009.184000	79034318.93600801			
Observation end date	2000-07-03T17:52:25	2000-07-03T17:58:38			
Read mode	TIMED	TIMED			

2.3 Aspect



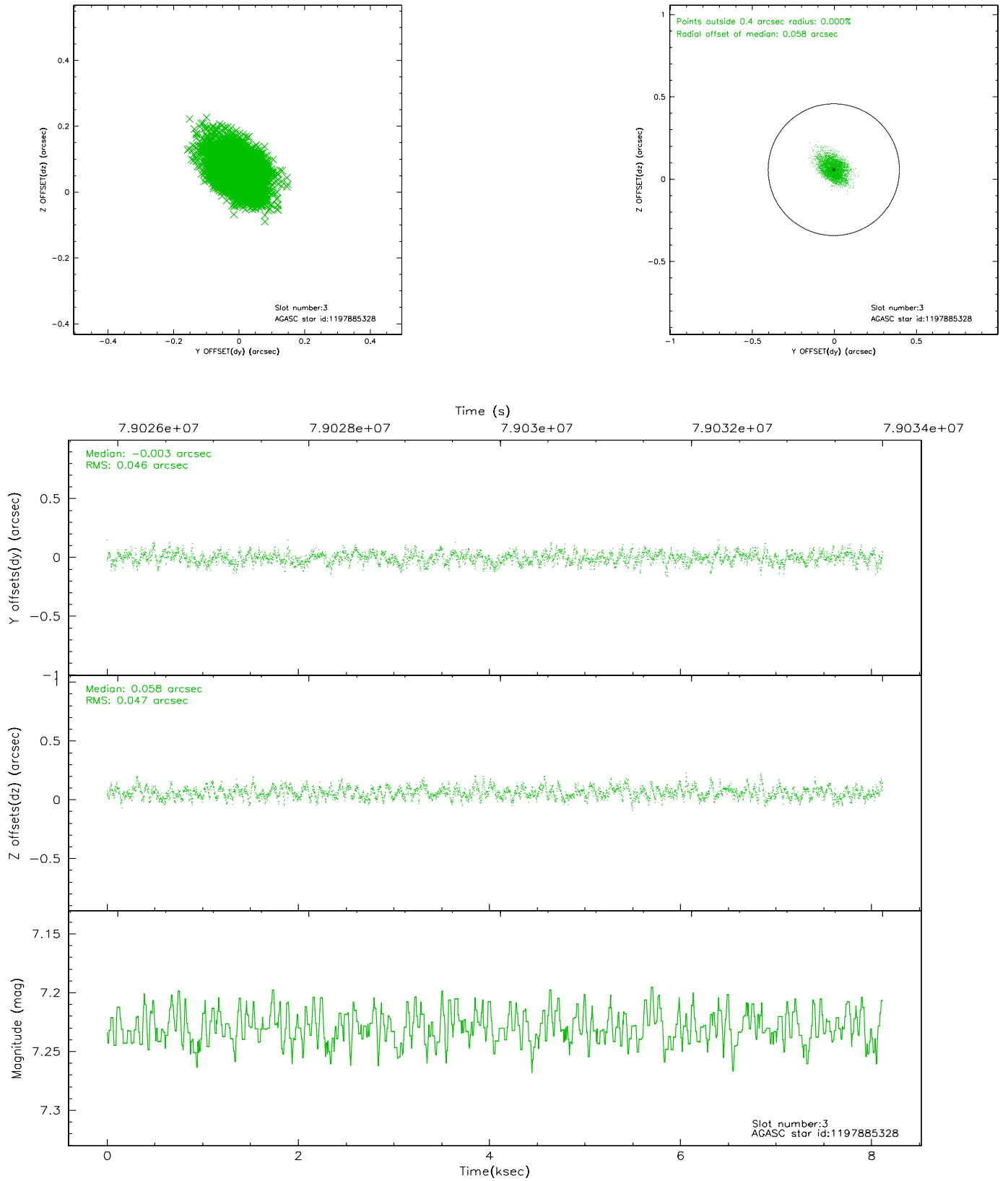


Slot Statistics

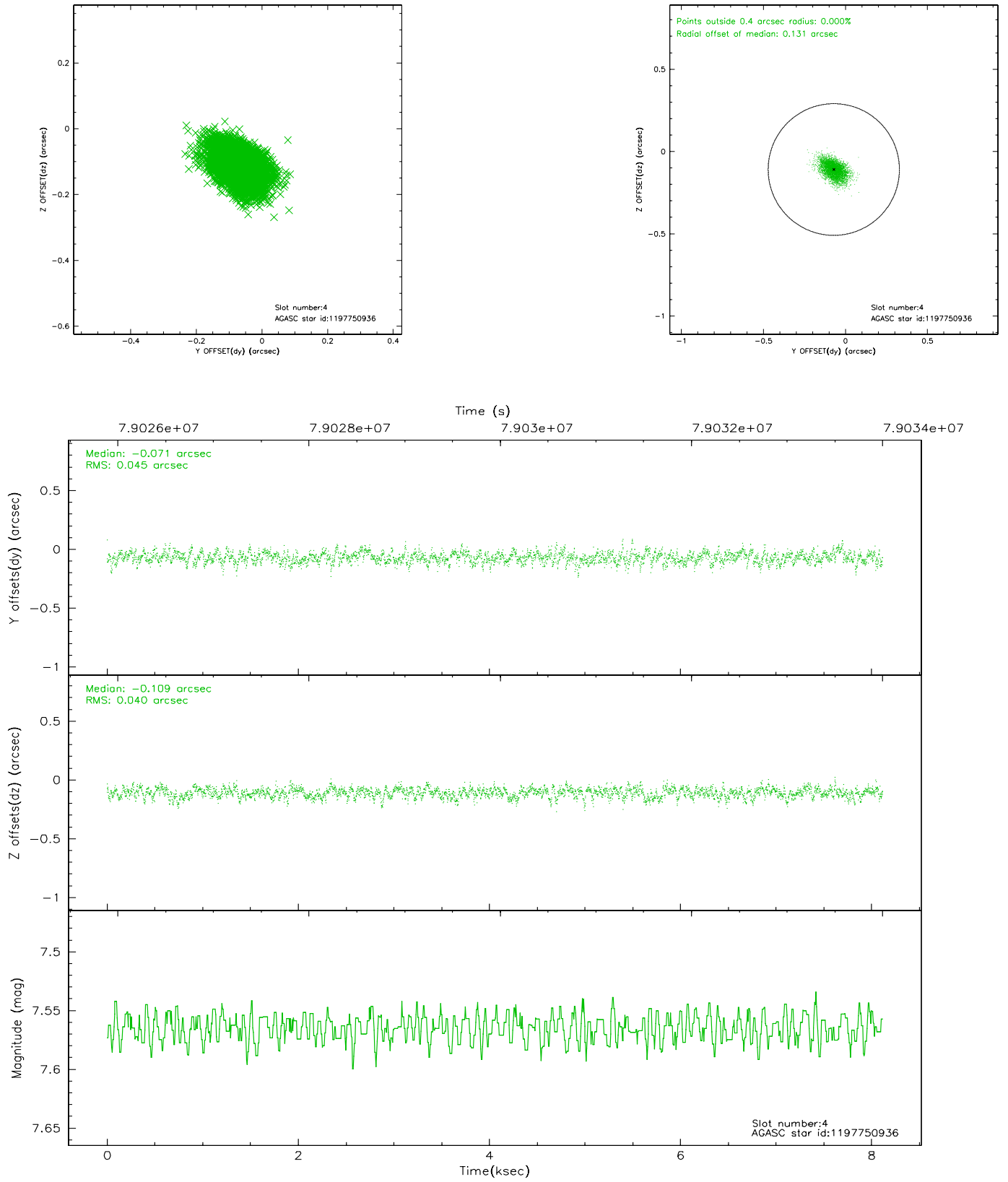
slot	status	id	mag	n_pts	med_dy	med_dz	dr1	dr2	ra	dec	mean_y	mean_z
0	FID	ACIS-I-2	7.15	1980	-0.029	0.021	0.006	0.010	0.000000	0.000000	-755.17	-834.28
1	FID	ACIS-I-4	7.19	1980	-0.074	0.030	0.007	0.012	0.000000	0.000000	2158.52	1071.57
2	FID	ACIS-I-6	7.27	1980	0.004	0.013	0.009	0.015	0.000000	0.000000	405.82	1714.52
3	GUIDE	1197885328	7.23	3960	-0.003	0.058	0.068	0.114	16.283090	-71.733943	830.74	-533.84
4	GUIDE	1197750936	7.56	3960	-0.071	-0.109	0.062	0.106	15.387940	-71.549550	1661.09	349.92
5	GUIDE	1197884536	8.49	3957	0.003	0.036	0.067	0.118	17.160729	-71.835289	286.76	-1434.91
6	GUIDE	1197750640	9.74	3958	0.094	-0.044	0.098	0.161	15.758835	-72.088048	-320.02	268.13
7	GUIDE	1197878768	9.62	3956	-0.022	0.061	0.121	0.196	16.656786	-71.304581	2271.29	-1237.81

2.4 Star Slots

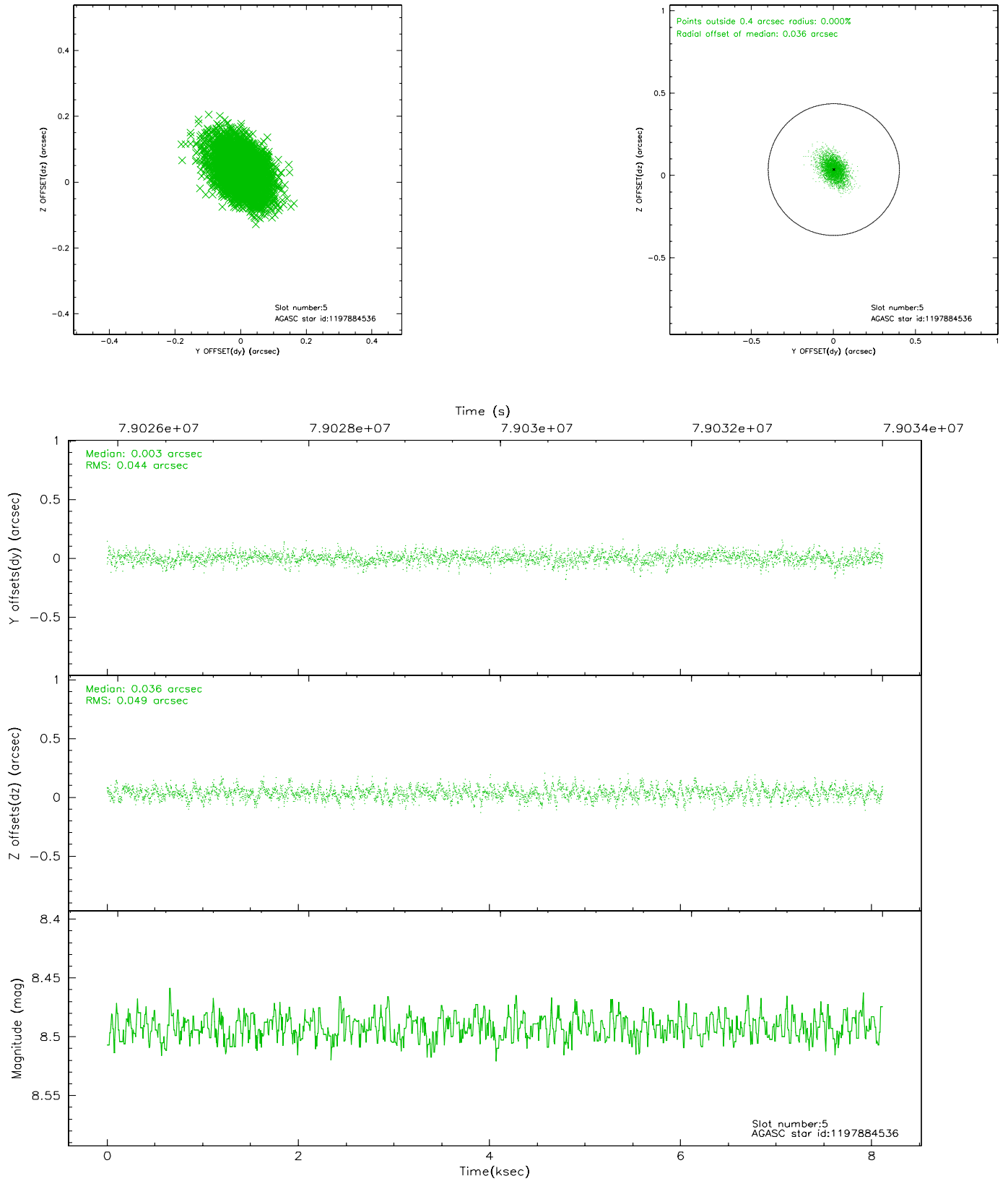
2.4.1 Slot 3



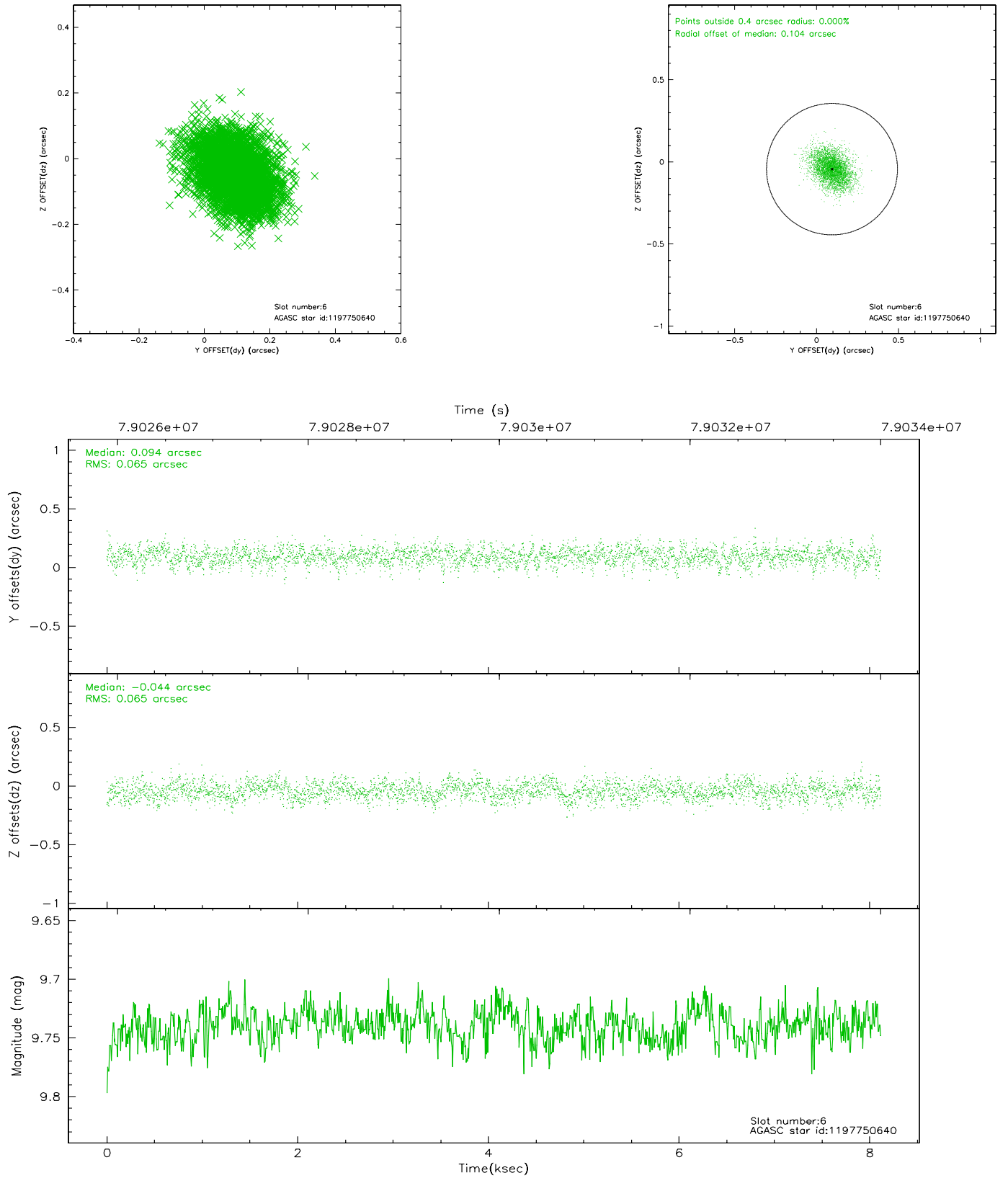
2.4.2 Slot 4



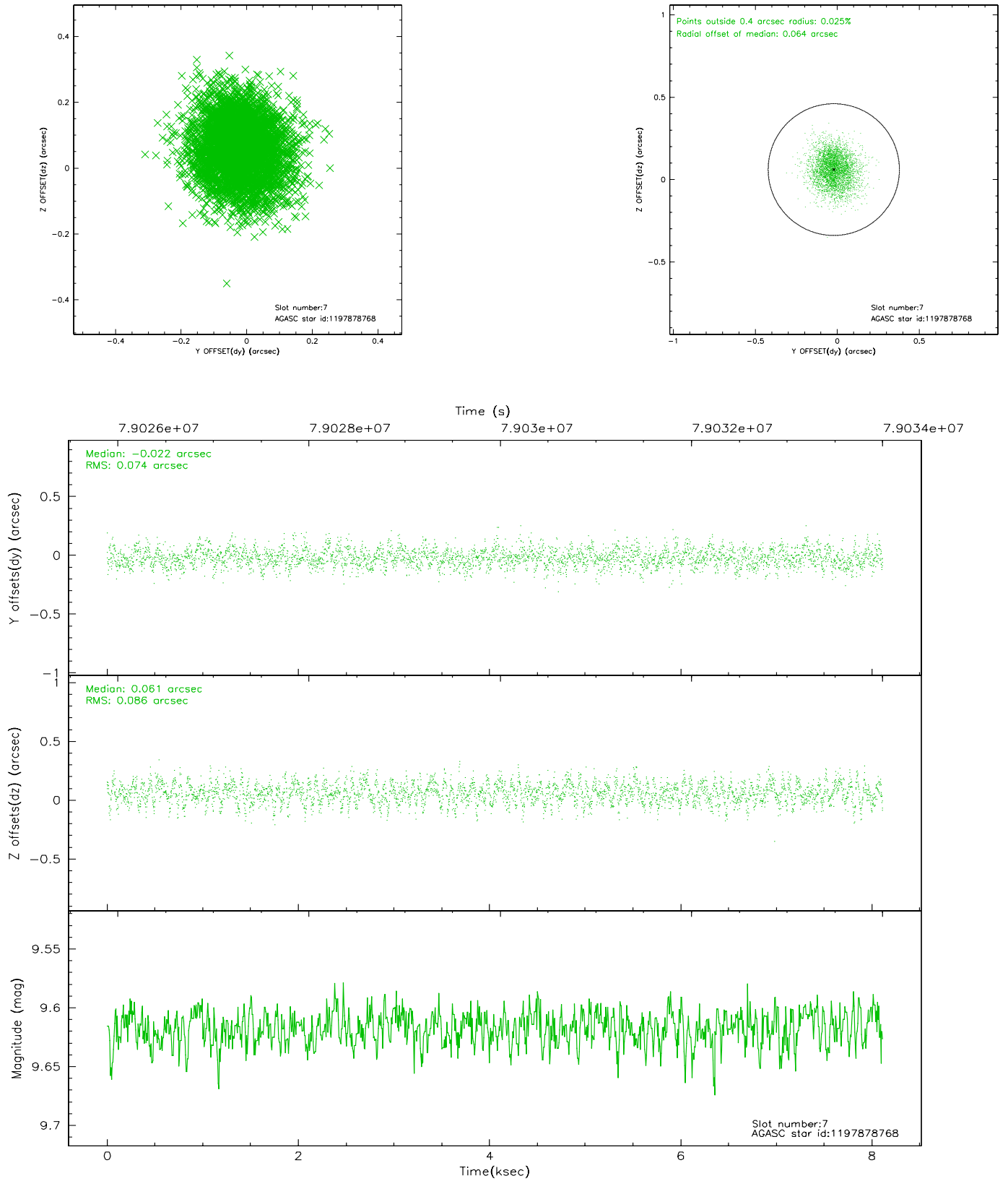
2.4.3 Slot 5



2.4.4 Slot 6

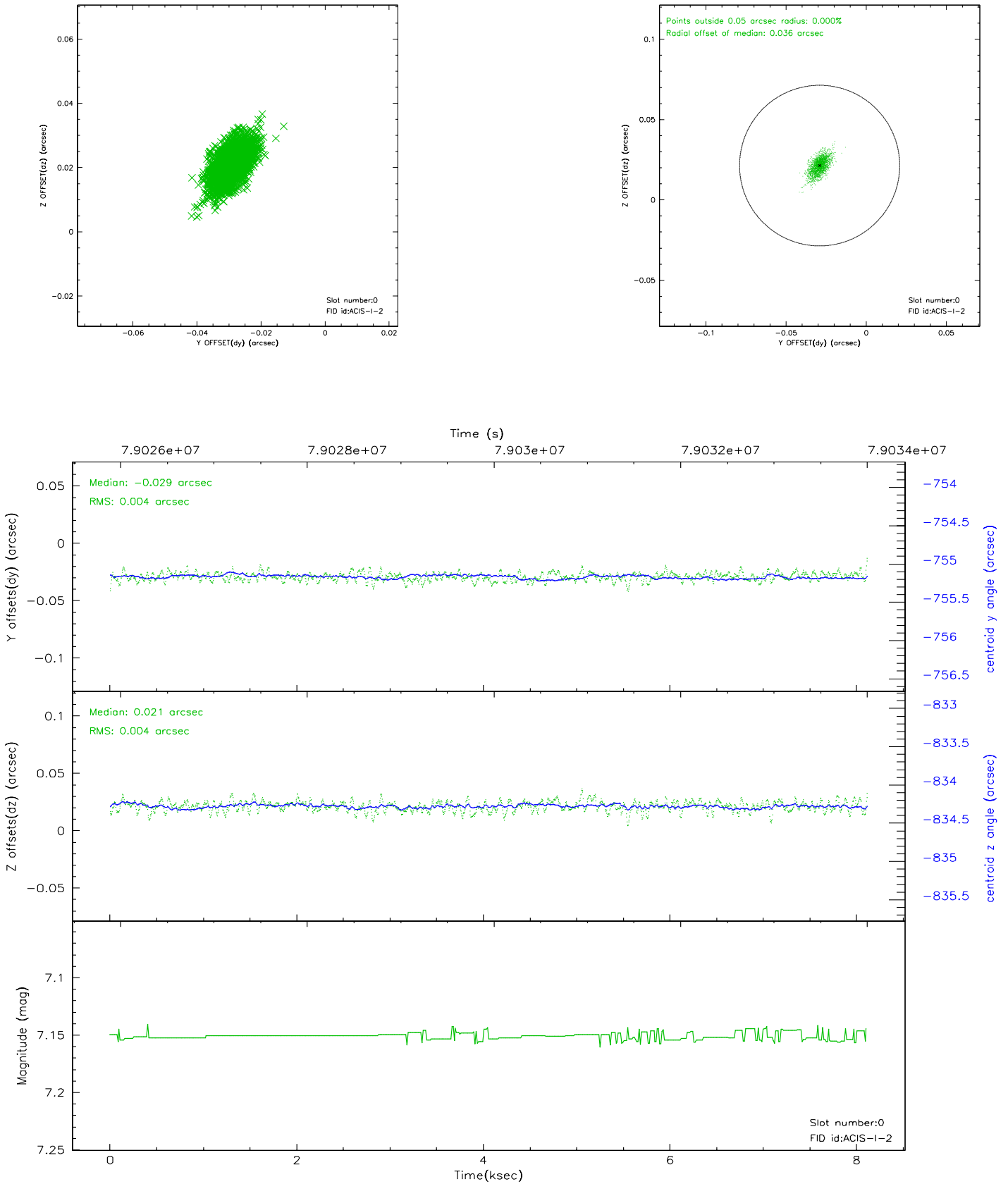


2.4.5 Slot 7

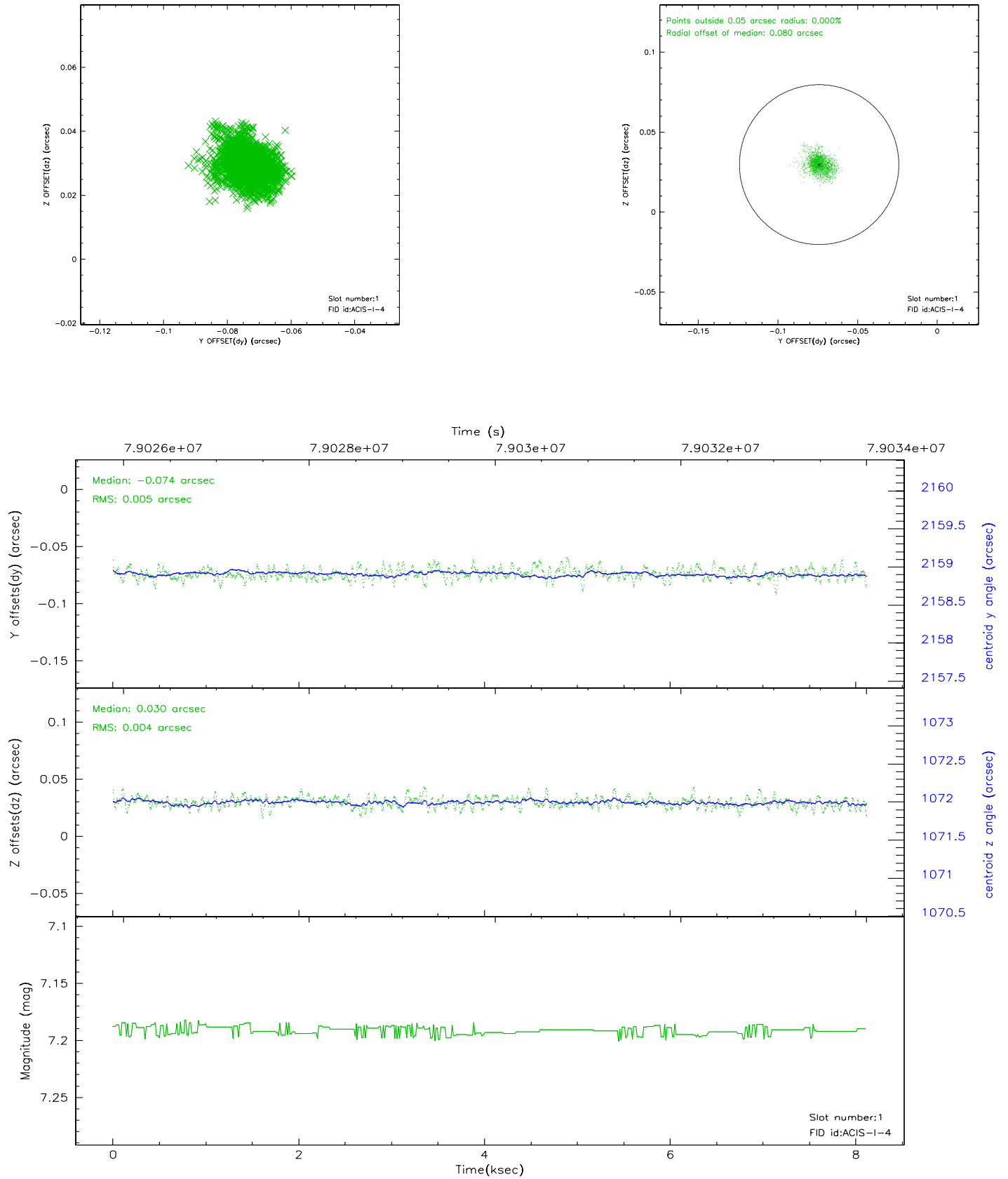


2.5 FID Slots

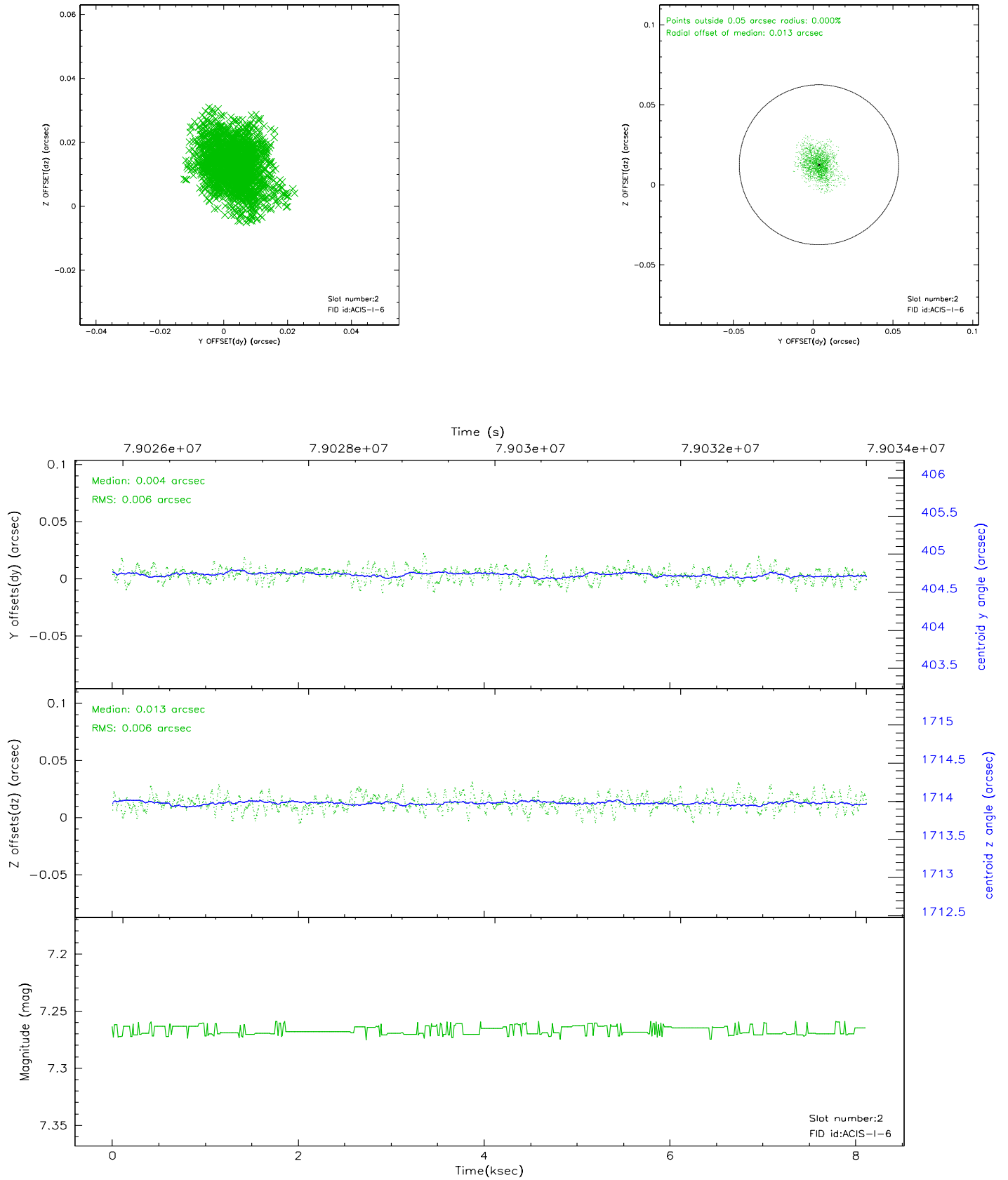
2.5.1 Slot 0



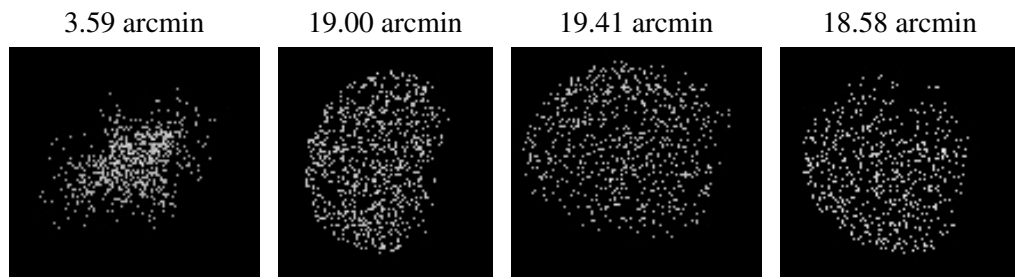
2.5.2 Slot 1



2.5.3 Slot 2



3 Point Sources



A Summary

A.1 Status

V&V Scientist	Joy Nichols
V&V Date (YYYY-MM-DD)	2008.11.21
V&V Edition	1
V&V Disposition and Status	OK
V&V Charge Time	7.692

A.2 Comments

This calibration observation was acquired with the focal plane temperature raised from -120C to -110C, for attempted recalibration of ACIS for the

1999-09-16 through 2000-01-28 period.

=====

This reprocessing of the data applies no

CTI correction because none is available for that temperature.

=====

Focal plane temperature is warmer than -118.7 C degrees during the entire

observation. This temperature is the upper limit of the verified ACIS calibration for the front-illuminated chips. The focal plane temperature

is warmer than -116.7 degrees C for approximately the entire observation.

This temperature is the upper limit of the verified ACIS calibration for the back-illuminated chips.

The ACIS spectral response calibration is less accurate at these warmer temperatures than it is at -119.7 C. Users whose science objectives depend

on the most accurate spectral response (ie: fitting line-rich spectra) may

notice an effect. Users whose science objectives do not depend on the most accurate spectral response should not notice an effect.