

V&V Reference Report

L2 ASCDS Version : 10.3.3

Observation 17407 - L2 Version 1
Chandra X-Ray Center

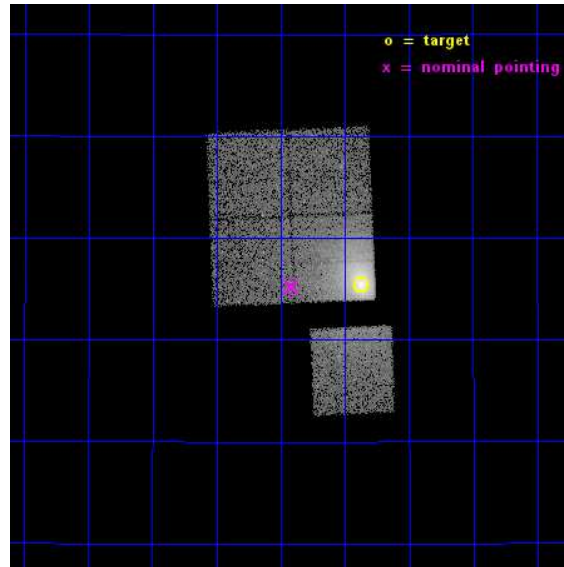
L2 Processing Date : Apr 19 2015

Contents

1	Front	2
2	OBI	3
2.1	OBI	3
2.1.1	Images	3
2.1.2	Bias	3
2.1.3	Parameters	4
2.1.4	Events	4
2.2	Compared Parameters	5
2.3	Aspect	6
2.4	Star Slots	9
2.4.1	Slot 3	9
2.4.2	Slot 4	10
2.4.3	Slot 5	11
2.4.4	Slot 6	12
2.4.5	Slot 7	13
2.5	FID Slots	14
2.5.1	Slot 0	14
2.5.2	Slot 1	15
2.5.3	Slot 2	16
A	Summary	17
A.1	Status	17
A.2	Comments	17

1 Front

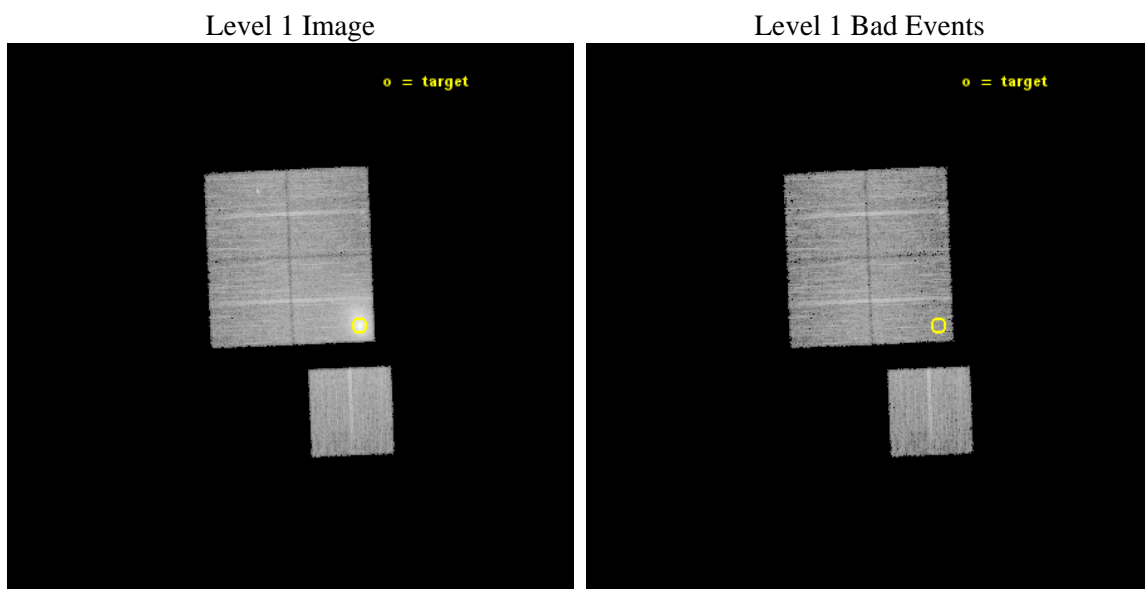
seq_num	890107	Sequence number
obs_id	17407	Observation id
title	AO-16 Calibration Observations of A1795	Proposal title
observer	Dr. CXC Calibration	Principal investigator
object	A1795	Source name
dtcycle	0	
cycle	P	events from which exps? Prim/Second/Both
ra_targ	207.219583	Observer's specified target RA [deg]
dec_targ	26.590833	Observer's specified target Dec [deg]
ra_nom	207.35428023105	Nominal RA [deg]
dec_nom	26.587166274505	Nominal Dec [deg]
roll_nom	177.64014711292	Nominal Roll [deg]
revision	1	Processing version of data
ontime	15077.162473083	Sum of GTIs [s]
livetime	14880.168245726	Livetime [s]
ontime0	15077.080393076	Sum of GTIs [s]
ontime1	15073.980352759	Sum of GTIs [s]
ontime2	15077.162473083	Sum of GTIs [s]
ontime3	15077.203513026	Sum of GTIs [s]
ontime6	15077.039353013	Sum of GTIs [s]
l2events	97545	Number of level 2 events



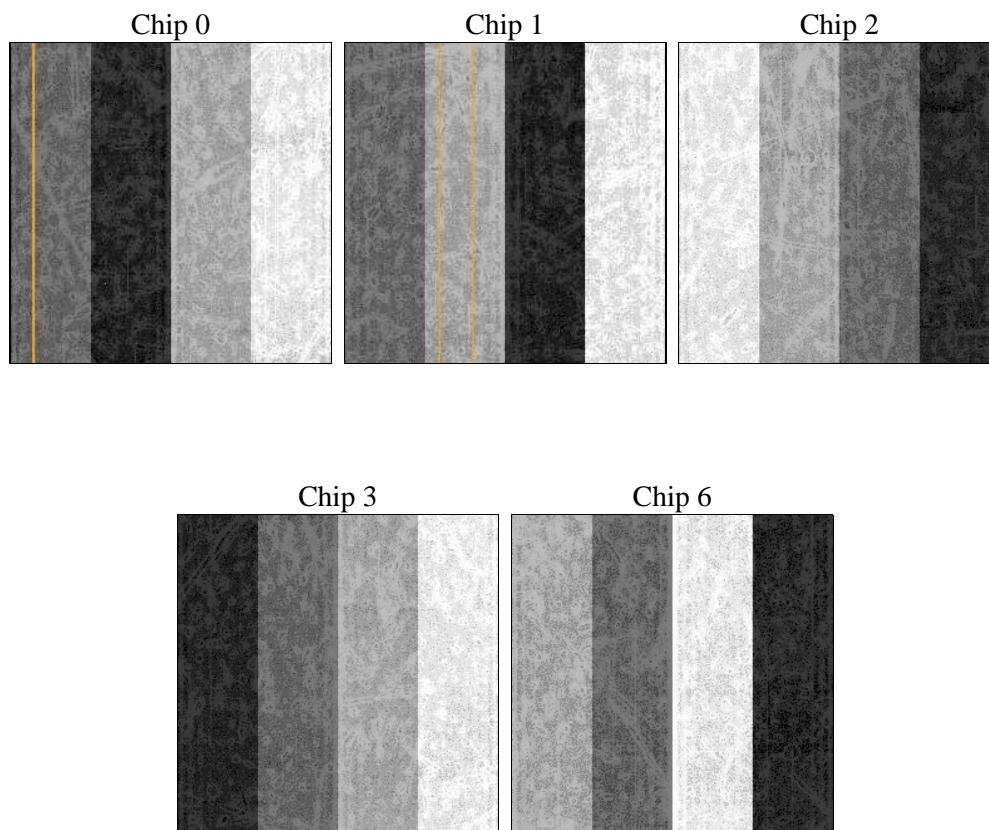
2 OBI

2.1 OBI

2.1.1 Images



2.1.2 Bias



2.1.3 Parameters

obi_num	1	Obi number	sched_exp_time	15000.000000	[s] Scheduled observation exposure time
ascdsver	10.3.3	Processing system revision	ontime	15077.162473083	Sum of GTIs [s]
caldbver	4.6.7	 	ontime0	15077.080393076	Sum of GTIs [s]
date	2015-04-19T04:48:32	Date and time of file creation	ontime1	15073.980352759	Sum of GTIs [s]
revision	1	Processing version of data	ontime2	15077.162473083	Sum of GTIs [s]
			ontime3	15077.203513026	Sum of GTIs [s]
			ontime6	15077.039353013	Sum of GTIs [s]
			l1events	410905	Number of level 1 events

2.1.4 Events

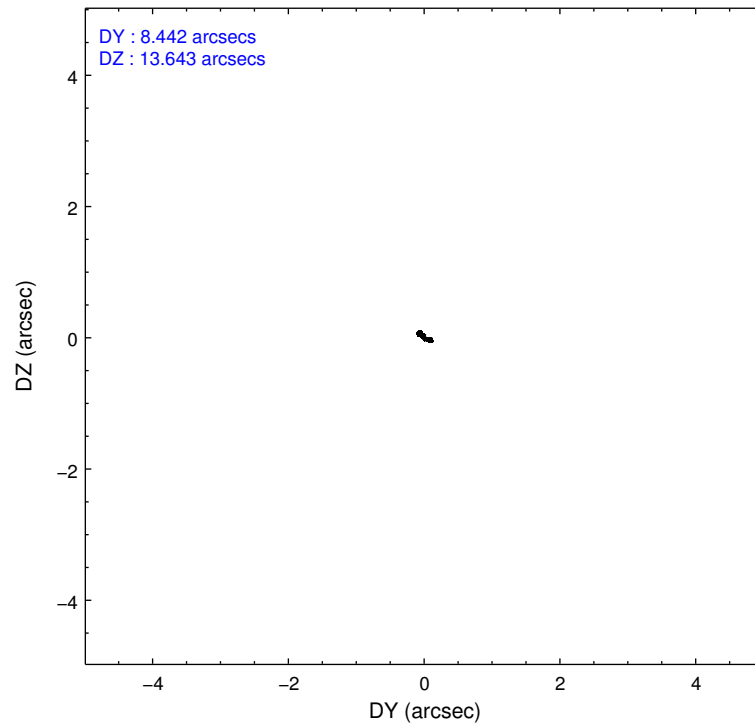
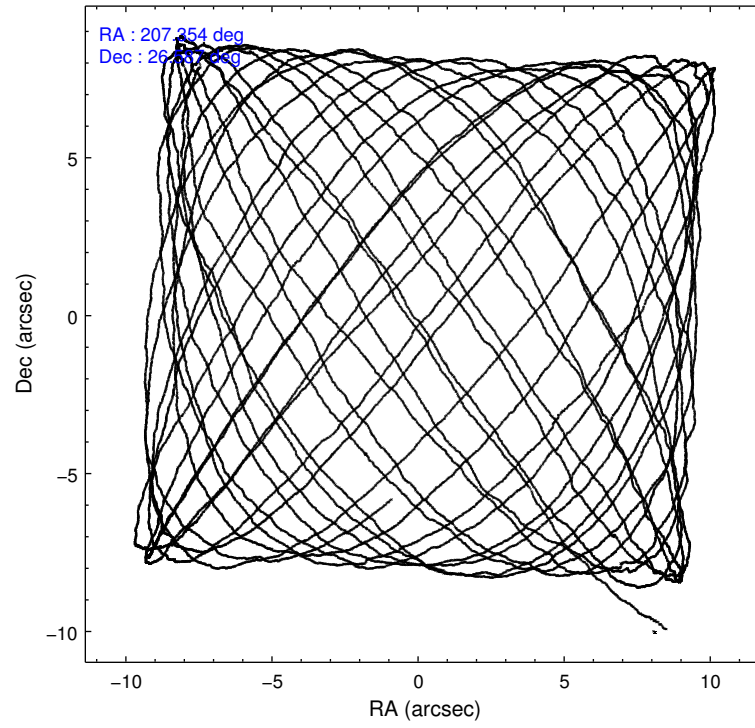
	ccd 0	ccd 1	ccd 2	ccd 3	ccd 6
level 1 events	65679	66277	131678	70971	76300
rejected events	56293	57086	62886	62191	64054
rejected %	85%	86%	47%	87%	83%

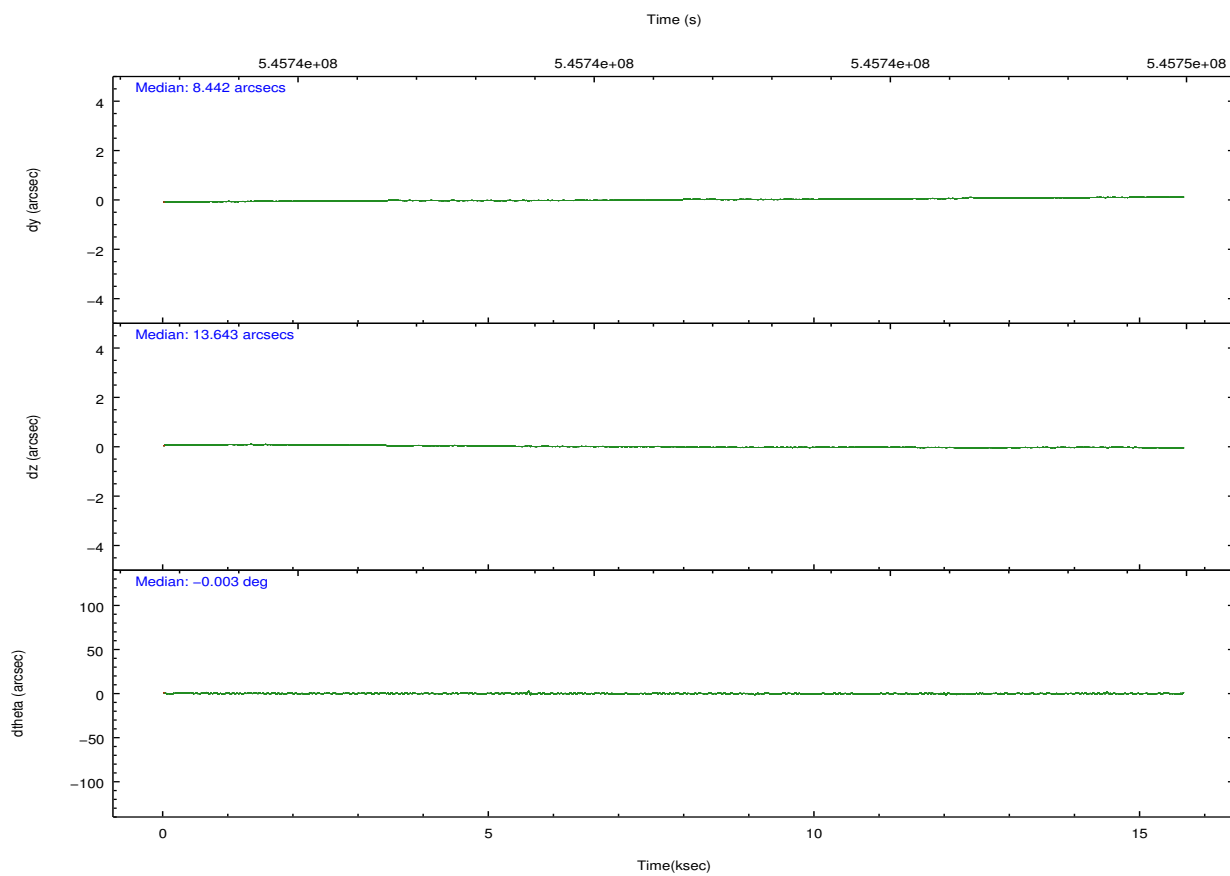
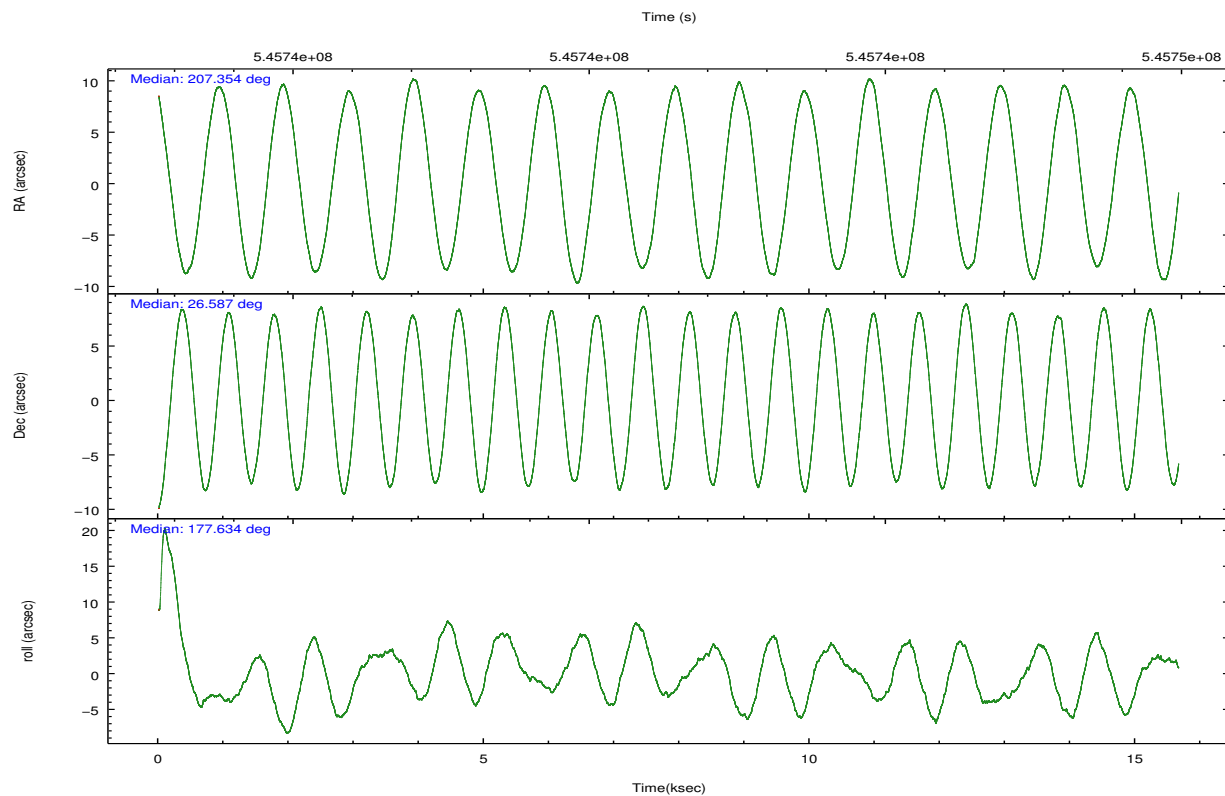
	ccd 0	ccd 1	ccd 2	ccd 3	ccd 6
grade 0 events	3763	3284	50945	3525	5634
	5%	4%	38%	4%	7%
grade 1 events	37	27	188	38	28
	0%	0%	0%	0%	0%
grade 2 events	2098	2097	8367	1830	2643
	3%	3%	6%	2%	3%
grade 3 events	872	796	2999	782	867
	1%	1%	2%	1%	1%
grade 4 events	827	778	2983	844	828
	1%	1%	2%	1%	1%
grade 5 events	3052	3118	3099	3521	3253
	4%	4%	2%	4%	4%
grade 6 events	1831	2239	3530	1800	2276
	2%	3%	2%	2%	2%
grade 7 events	53199	53938	59567	58631	60771
	80%	81%	45%	82%	79%

2.2 Compared Parameters

Parameter	Planned	Actual	Parameter	Planned	Actual
Instrument	ACIS	ACIS	Obspar format version number	7	7
Detector	ACIS-01236	ACIS-01236	Obspar file type	PREDICTED	ACTUAL
Grating	NONE	NONE	Obspar update status	NONE	UPDATED
Data mode	VFAINT	VFAINT	Number of optional ACIS chips dropped	0	0
Observation mode	POINTING	POINTING	On-chip summing requested	N	N
[deg] Pointing RA	207.381616	207.3542802310463	Subarray requested	NONE	NONE
[deg] Pointing Dec	26.600072	26.58716627450503	Alternating exposures requested	N	N
[deg] Pointing Roll	177.419223	177.6401471129153	[s] Primary exposure time	0.000000	3.1
[s] Window start time (MET)	544233667.184000	544233667.184000			
[s] Window stop time (MET)	546739267.184000	546739267.184000			
[mm] SIM focus pos	-0.782348	-0.7809083437167272			
[mm] SIM defocus	0	0.001439871863259334			
[mm] SIM translation stage pos	-215.164963	-215.162531930997			
[mm] SIM translation stage offset	-18.4275	-18.42992107193268			
[s] Observation start time (MET)	545734181.184000	545732859.15798			
Observation start date	2015-04-18T08:48:34	2015-04-18T08:27:39			
[s] Observation end time (MET)	545749181.184000	545749315.0214			
Observation end date	2015-04-18T12:58:34	2015-04-18T13:01:55			
Read mode	TIMED	TIMED			

2.3 Aspect



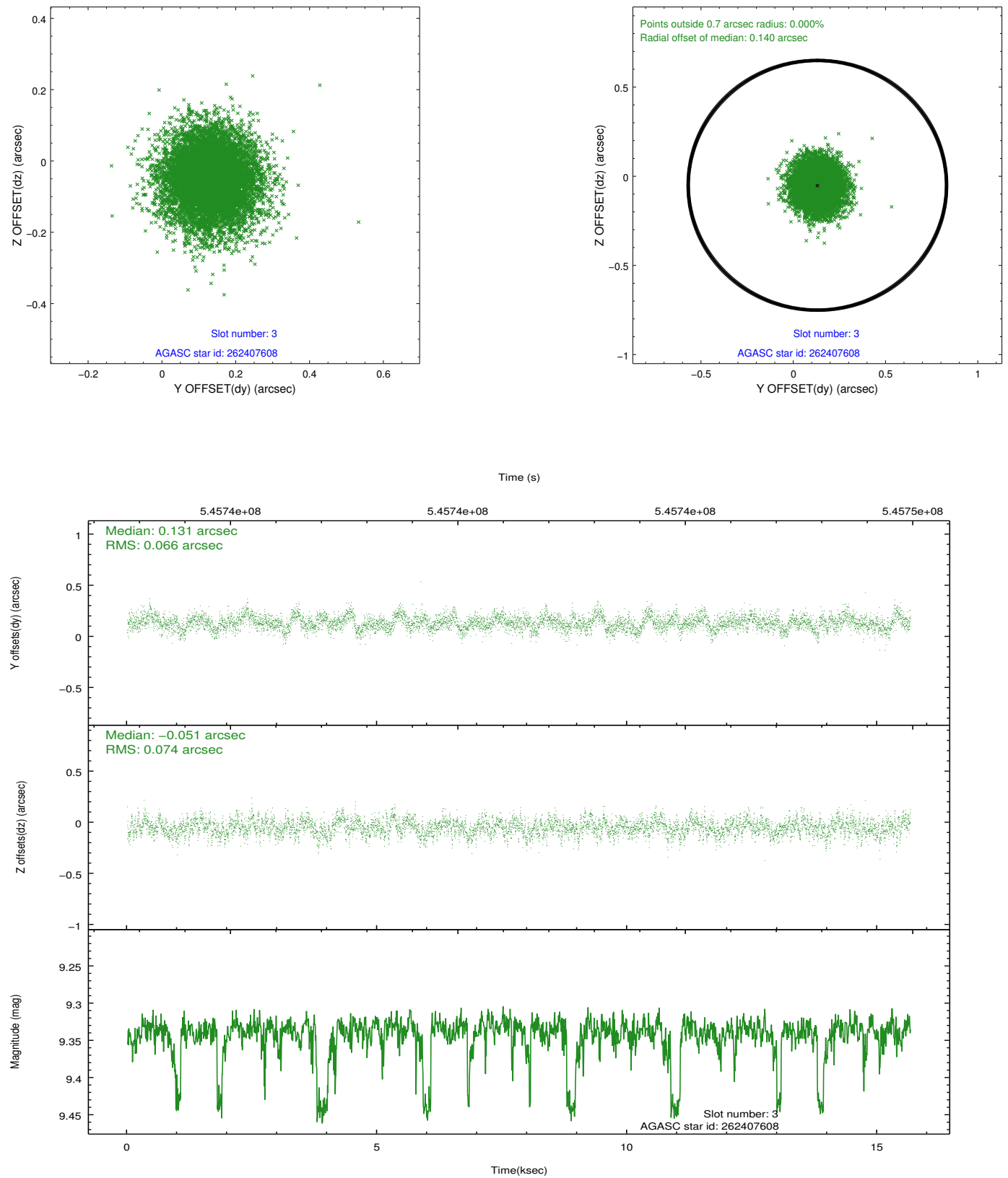


Slot Statistics

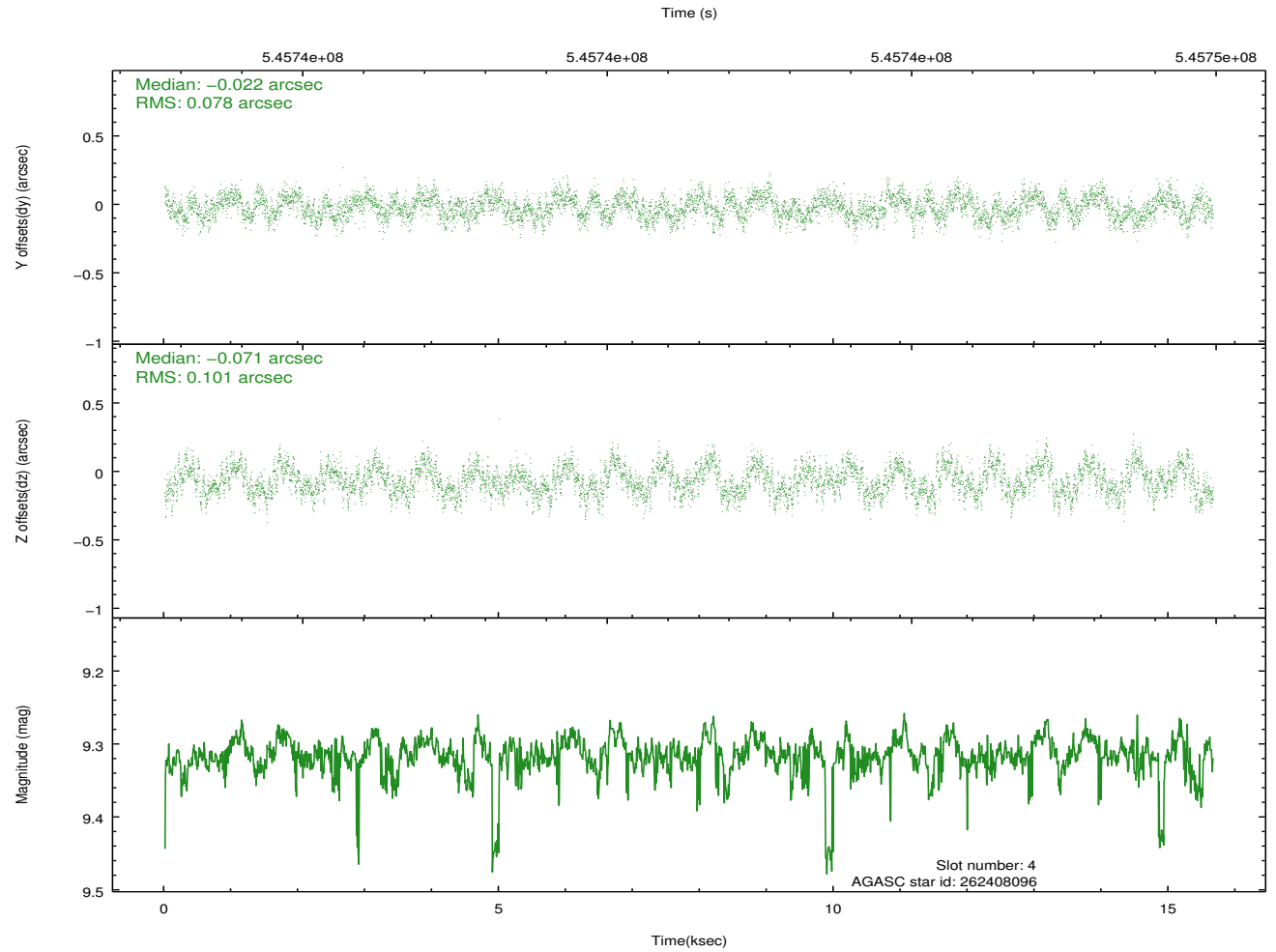
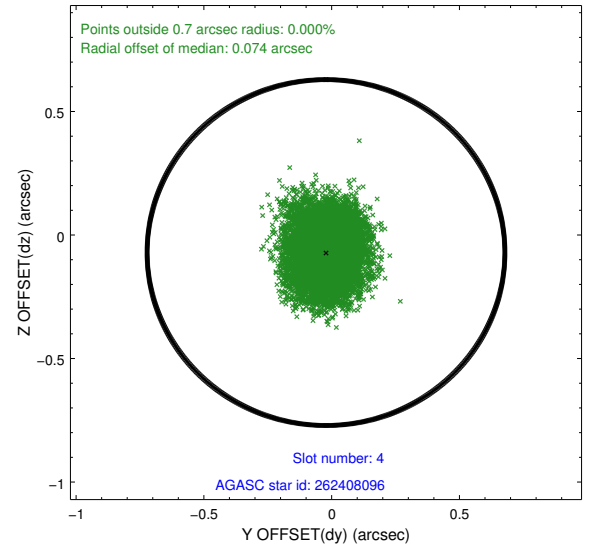
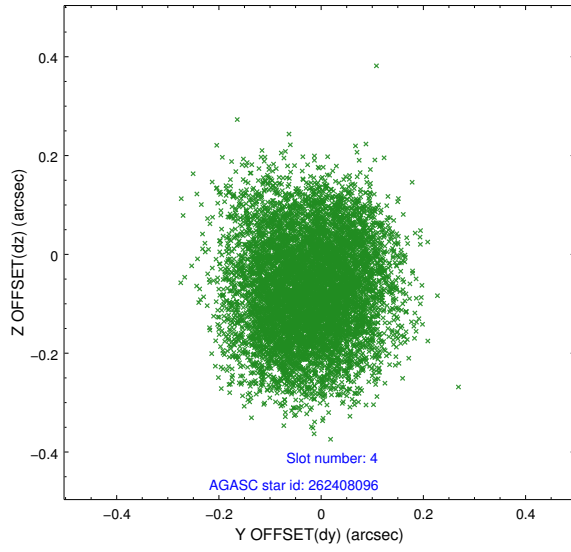
slot	status	used	id	mag	n_pts	med_dy	med_dz	dr1	dr2	ra	dec	mean_y	mean_z
0	FID		ACIS-I-1	7.25	3820	0.298	-0.262	0.007	0.013	0.000000	0.000000	931.17	-1215.94
1	FID		ACIS-I-5	7.27	3820	-0.459	0.208	0.006	0.011	0.000000	0.000000	-1817.58	681.71
2	FID		ACIS-I-6	7.31	3820	0.070	0.125	0.007	0.012	0.000000	0.000000	396.12	1326.51
3	GUIDE	used	262407608	9.34	7632	0.131	-0.051	0.106	0.171	207.378401	26.435507	-16.30	592.61
4	GUIDE	used	262408096	9.31	7635	-0.022	-0.071	0.138	0.213	207.011678	26.515421	1177.48	356.62
5	GUIDE	used	262408512	7.99	7637	0.048	0.067	0.092	0.145	207.800210	27.128796	-1253.44	-1963.84
6	GUIDE	used	262408936	9.61	7631	-0.090	0.061	0.184	0.293	207.154731	26.726554	748.99	-422.31
7	GUIDE	used	262414456	9.26	7634	-0.065	-0.005	0.128	0.220	208.043290	26.129682	-2212.58	1590.20

2.4 Star Slots

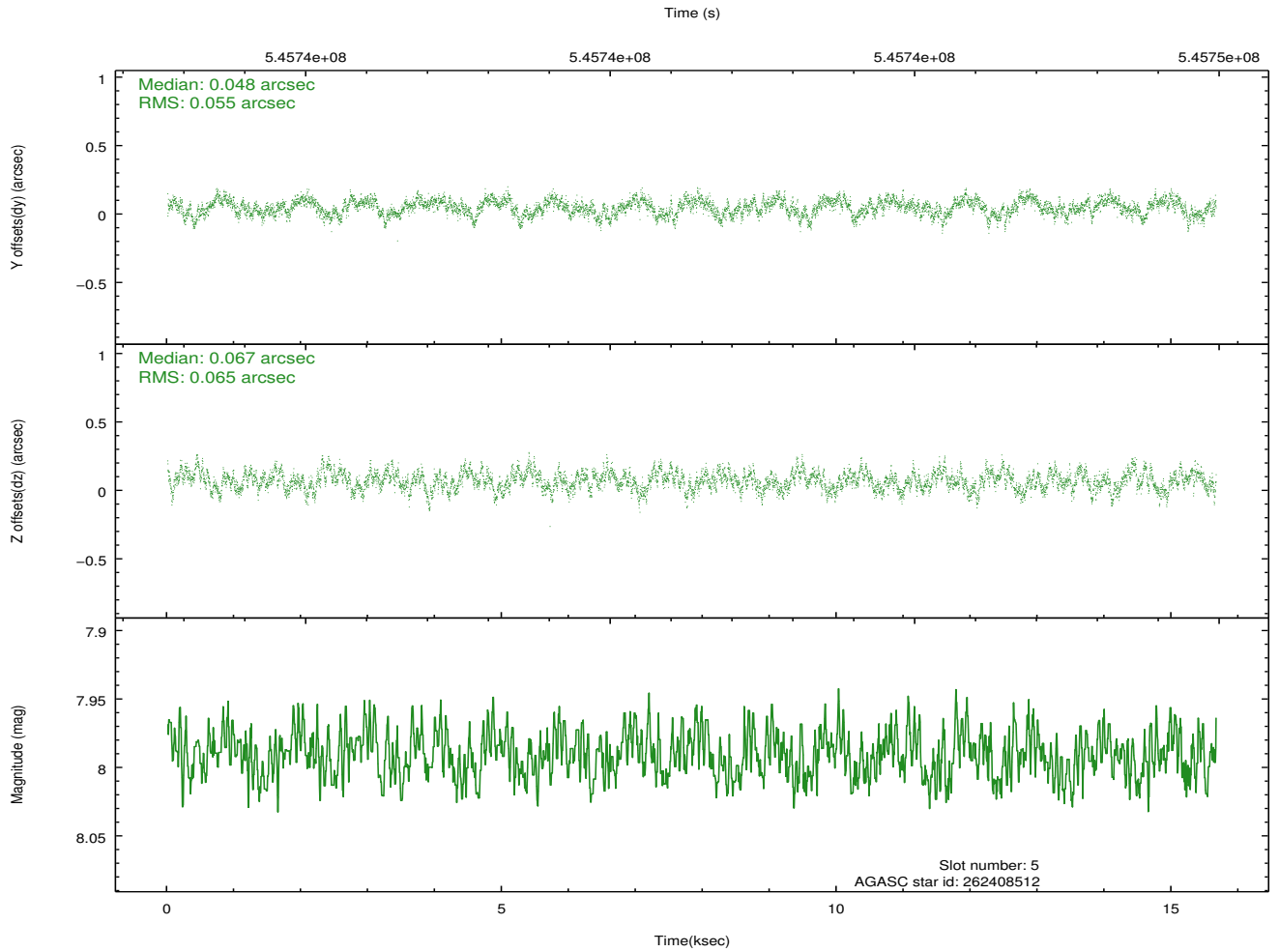
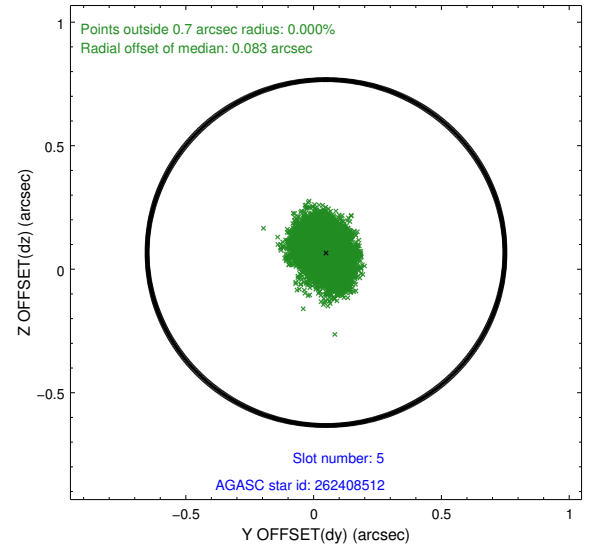
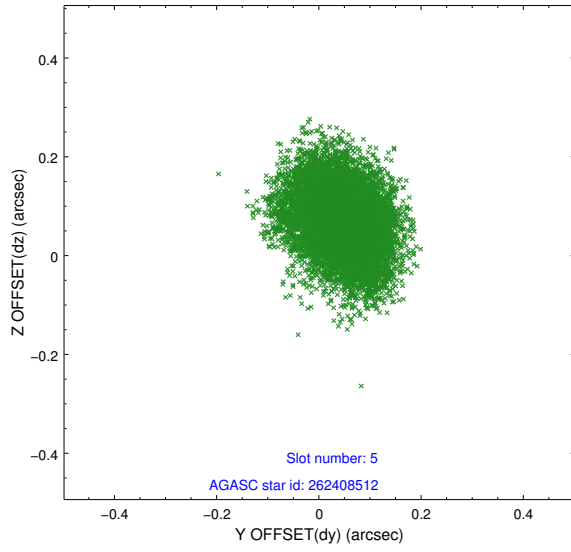
2.4.1 Slot 3



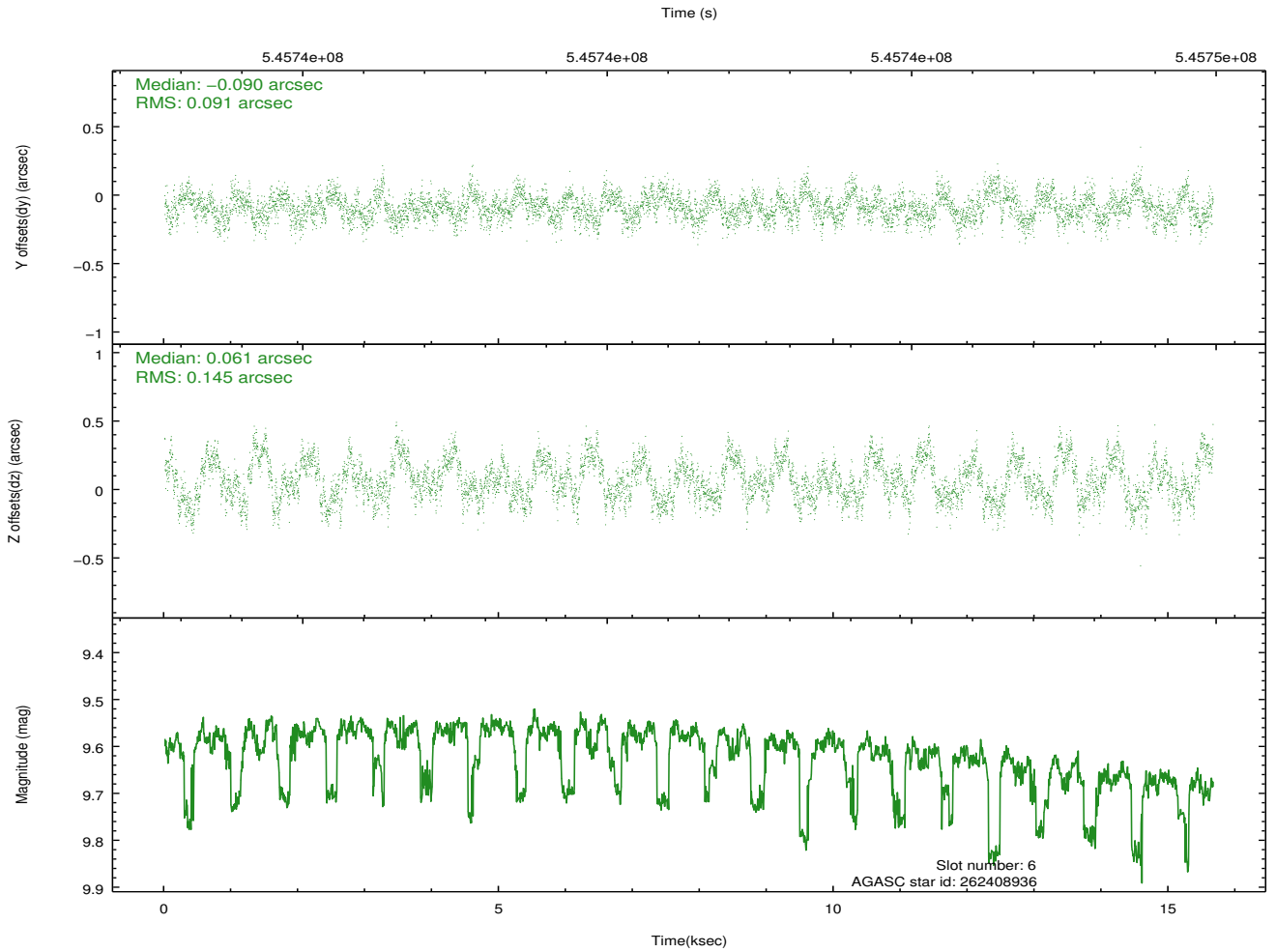
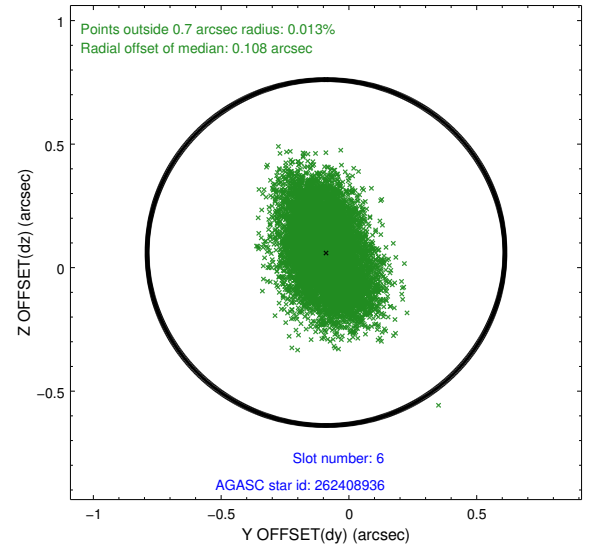
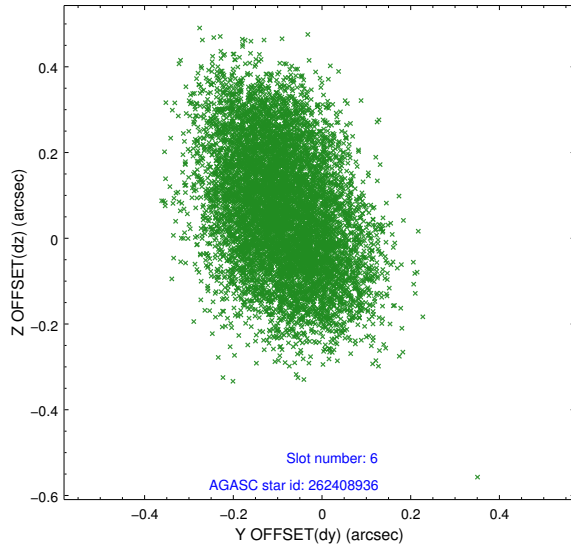
2.4.2 Slot 4



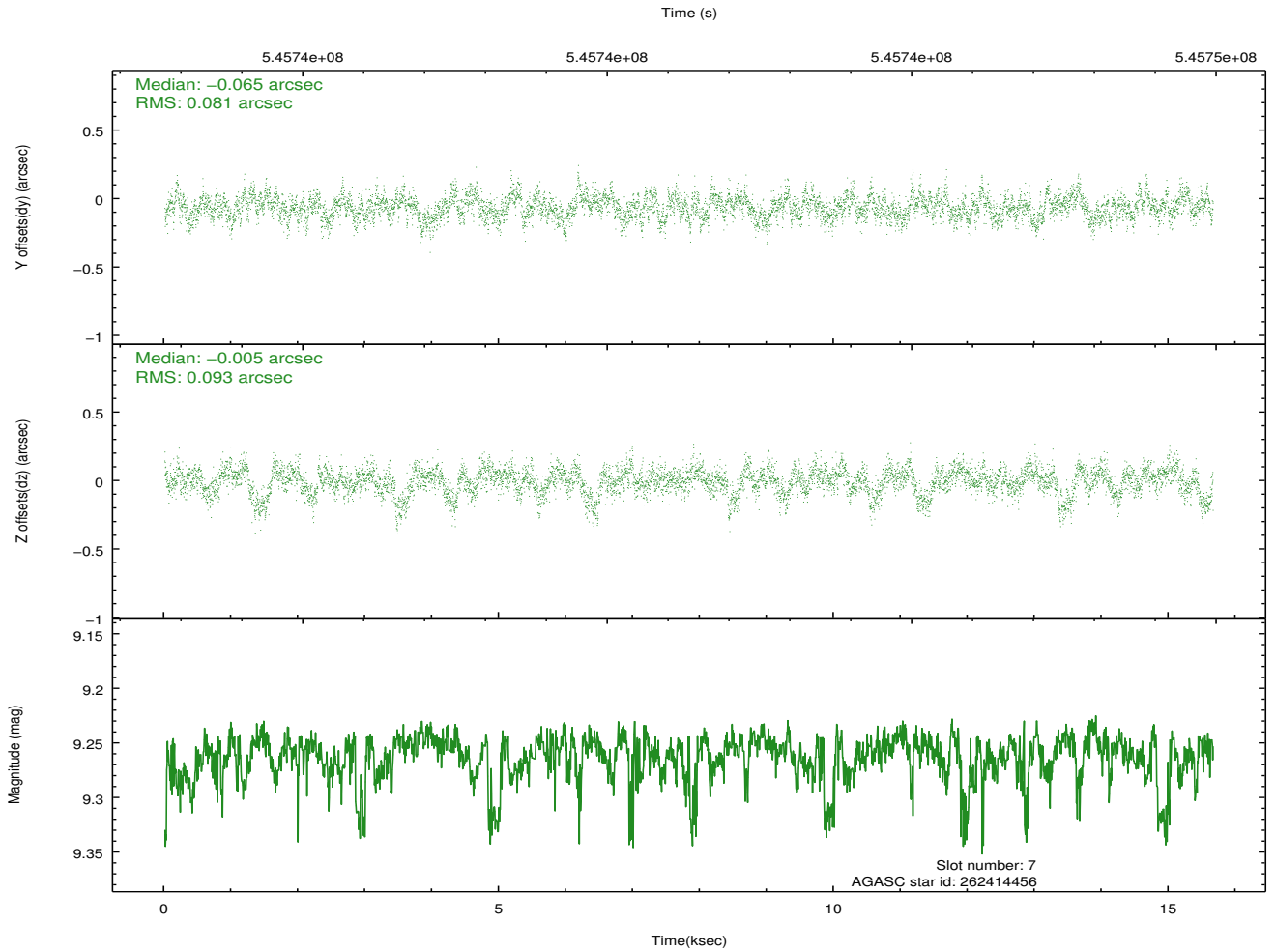
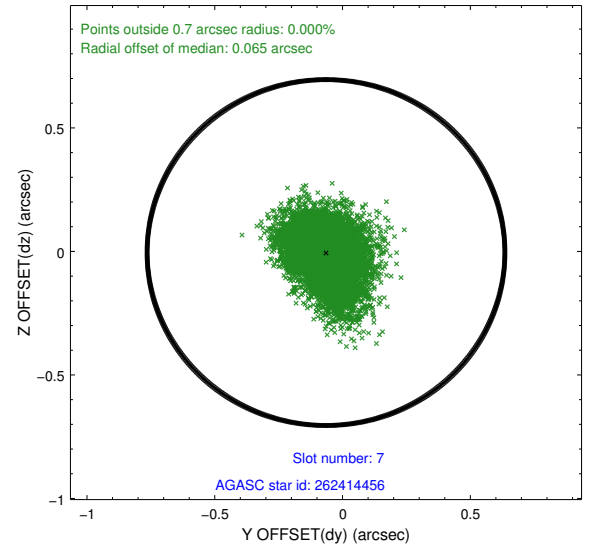
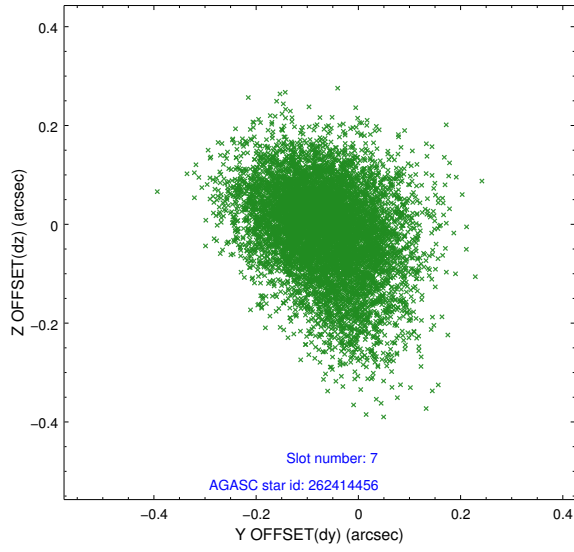
2.4.3 Slot 5



2.4.4 Slot 6

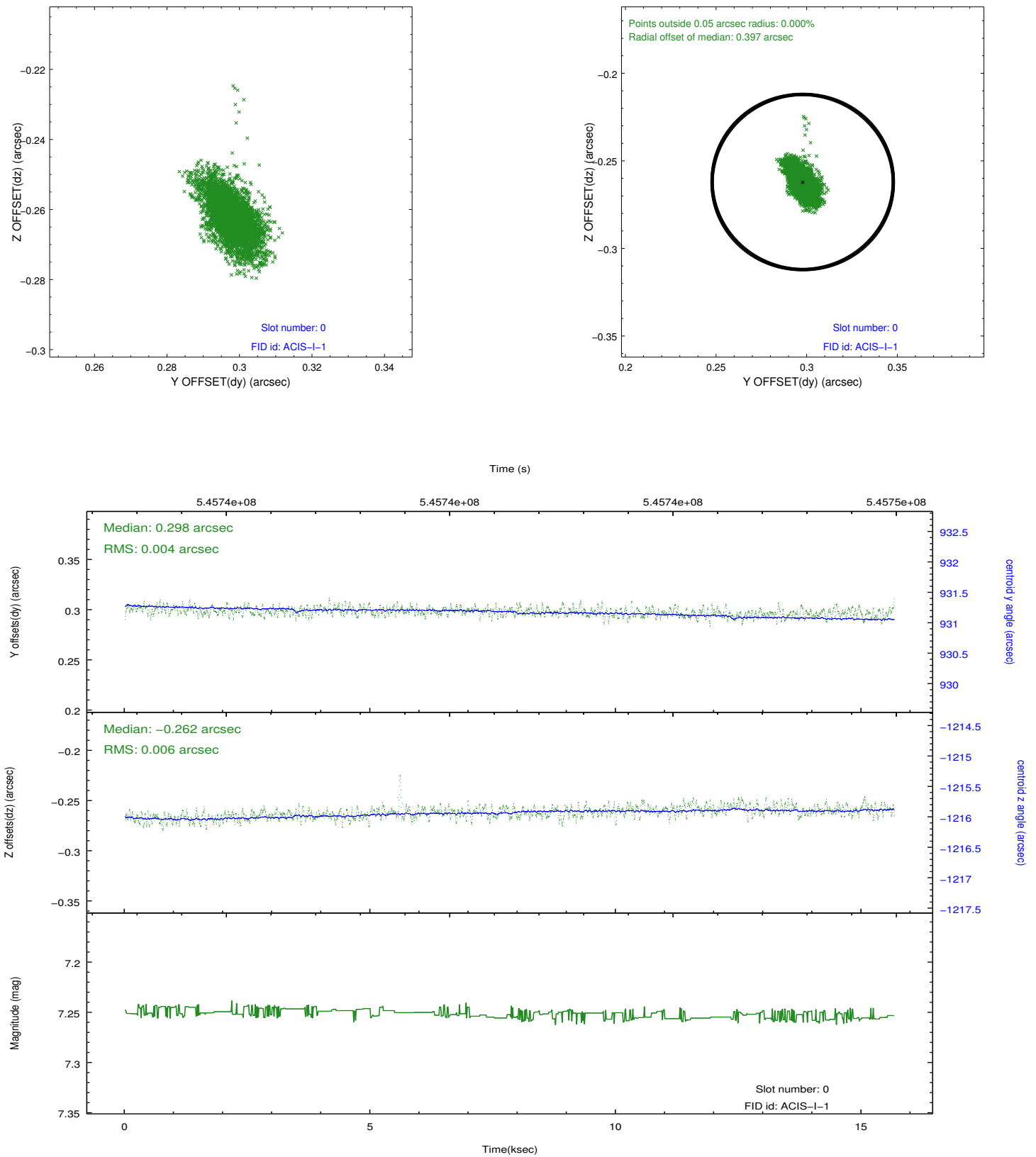


2.4.5 Slot 7

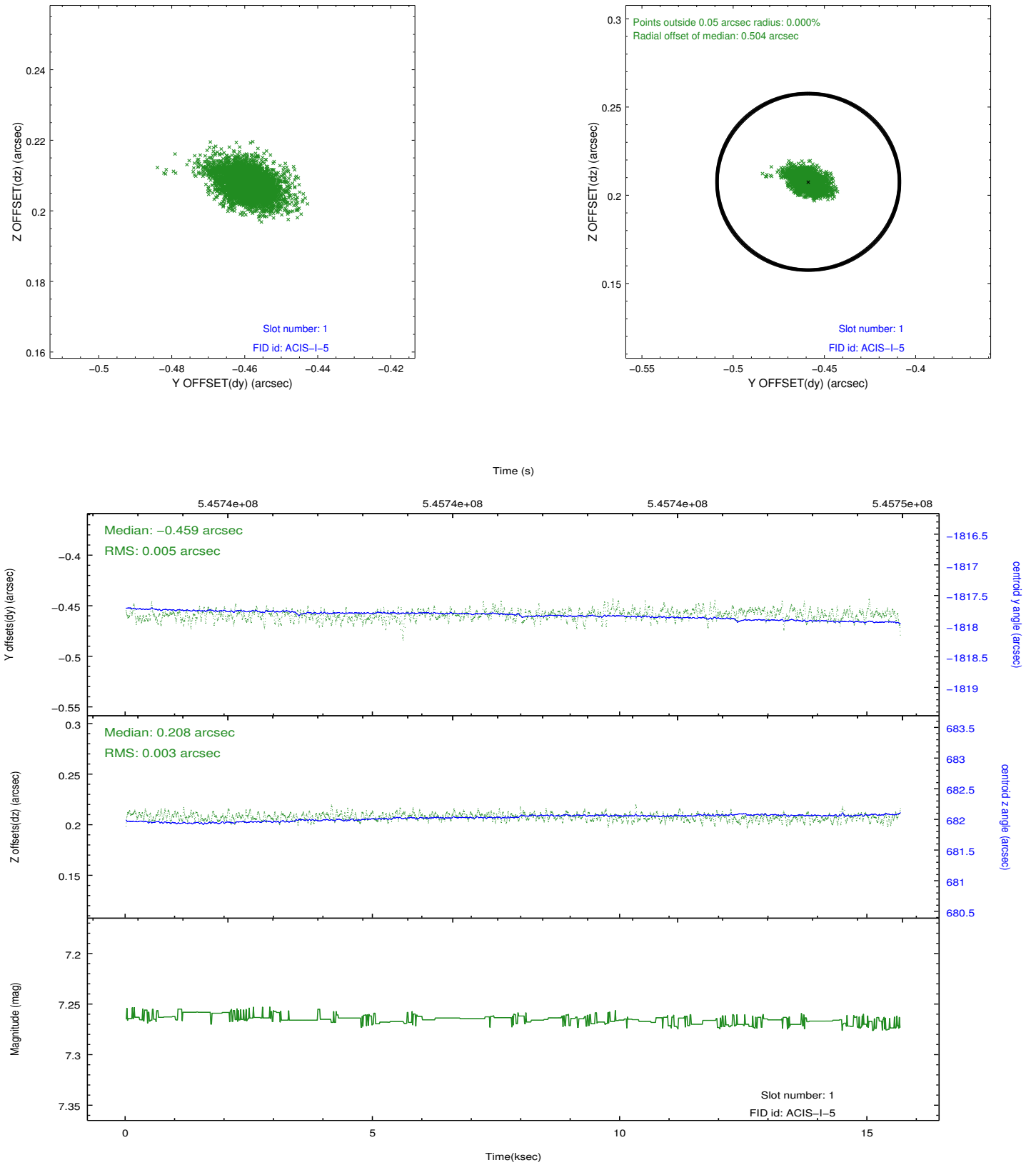


2.5 FID Slots

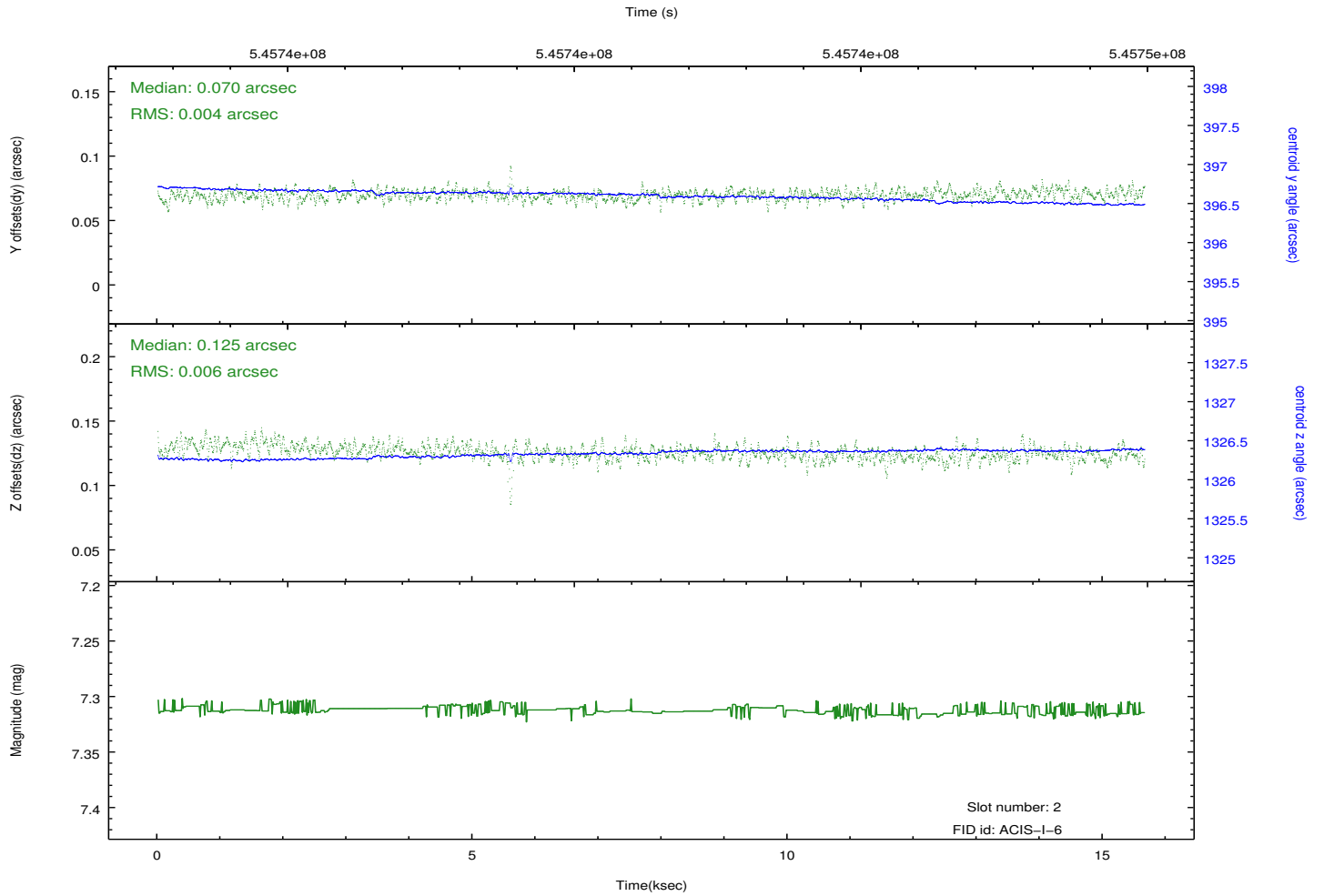
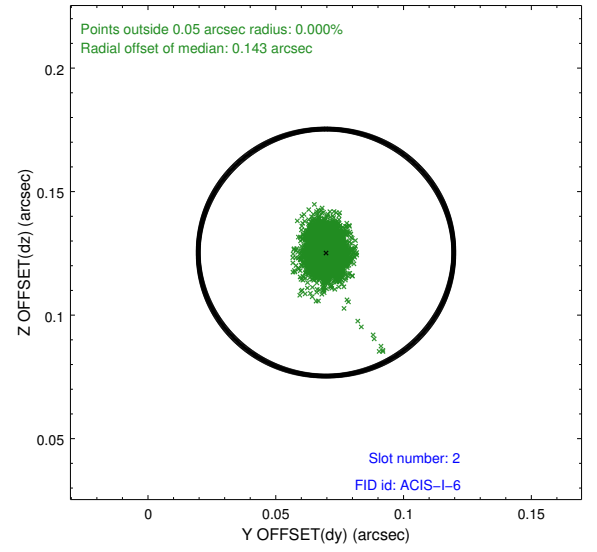
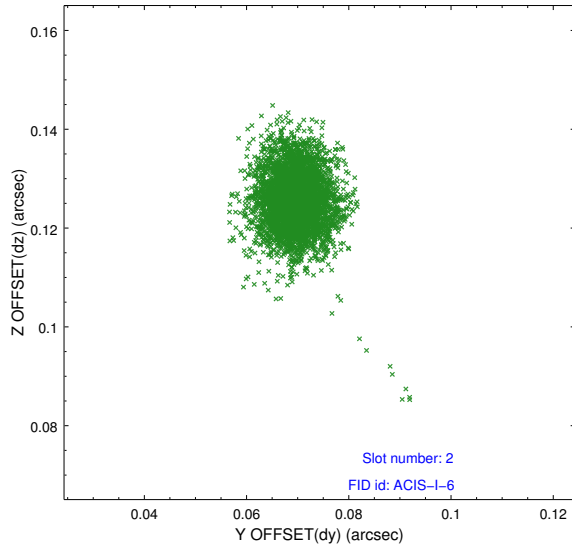
2.5.1 Slot 0



2.5.2 Slot 1



2.5.3 Slot 2



A Summary

A.1 Status

V&V Scientist	Beth Sundheim
V&V Date (YYYY-MM-DD)	2015.04.21
V&V Edition	1
V&V Disposition and Status	OK
V&V Charge Time	15.077162473083

A.2 Comments

Window preference met.