

# V&V Reference Report

## L2 ASCDS Version : 8.4.5

Observation 1737 - L2 Version 6  
Chandra X-Ray Center

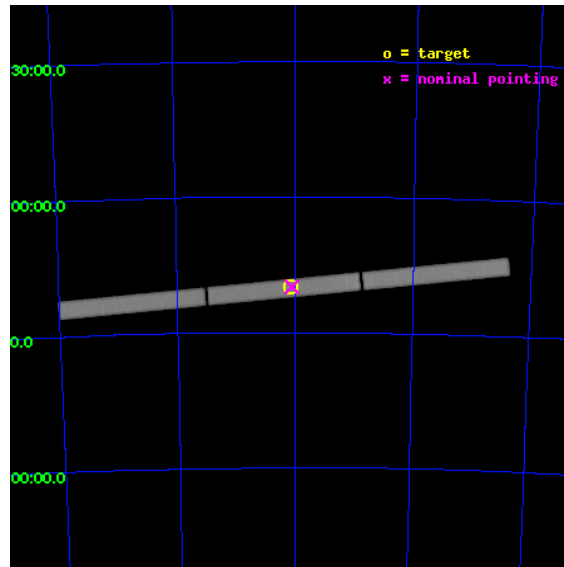
L2 Processing Date : Aug 29 2012

## Contents

<b>1</b>	<b>Front</b>	<b>2</b>
<b>2</b>	<b>OBI</b>	<b>3</b>
2.1	OBI . . . . .	3
2.1.1	Images . . . . .	3
2.1.2	Parameters . . . . .	4
2.1.3	Events . . . . .	4
2.2	Compared Parameters . . . . .	5
2.3	Aspect . . . . .	6
2.4	Star Slots . . . . .	9
2.4.1	Slot 3 . . . . .	9
2.4.2	Slot 4 . . . . .	10
2.4.3	Slot 5 . . . . .	11
2.4.4	Slot 6 . . . . .	12
2.4.5	Slot 7 . . . . .	13
2.5	FID Slots . . . . .	14
2.5.1	Slot 0 . . . . .	14
2.5.2	Slot 1 . . . . .	15
2.5.3	Slot 2 . . . . .	16
<b>A</b>	<b>Summary</b>	<b>17</b>
A.1	Status . . . . .	17
A.2	Comments . . . . .	17

# 1 Front

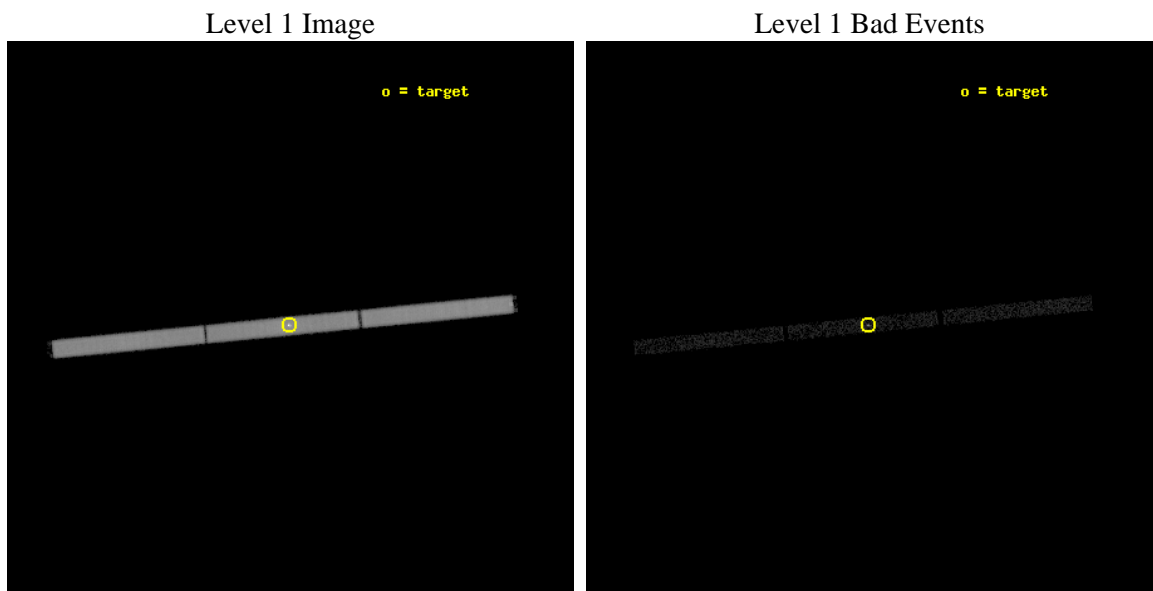
seq_num	590186	Sequence number
obs_id	1737	Observation id
title	VERIFICATION OF AXAF TIMING CAPABILITY	Proposal title
observer	Dr. CXC Calibration	Principal investigator
object	PSR B0540-69	Source name
ra_targ	85.04625	Observer's specified target RA [deg]
dec_targ	-69.332	Observer's specified target Dec [deg]
ra_nom	85.032012929516	Nominal RA [deg]
dec_nom	-69.331227164605	Nominal Dec [deg]
roll_nom	174.3793802807	Nominal Roll [deg]
revision	6	Processing version of data
ontime	9738.7816090286	[s]
livetime	9682.9319119276	Ontime multiplied by DTCOR
l2events	442407	Number of level 2 events



## 2 OBI

### 2.1 OBI

#### 2.1.1 Images



### 2.1.2 Parameters

obi_num	0	Obi number	sched_exp_time	9885.000000	[s] Scheduled observation exposure time
ascdsver	8.4.5	Processing system revision	ontime	9738.7816090286	[s]
caldsver	4.5.1.1	&#160	l1events	630619	Number of level 1 events
date	2012-08-29T11:44:24	Date and time of file creation			
revision	5	Processing version of data			

### 2.1.3 Events

Level 1 Events

	<b>segment 1</b>	<b>segment 2</b>	<b>segment 3</b>
level 1 events	198924	212342	219353
rejected events	3496	5291	3764
rejected %	1%	2%	1%

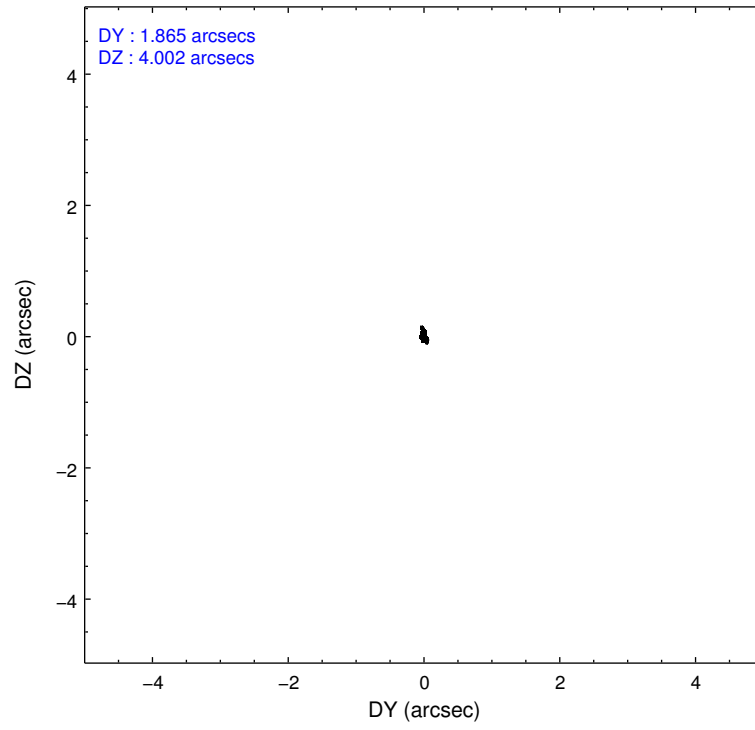
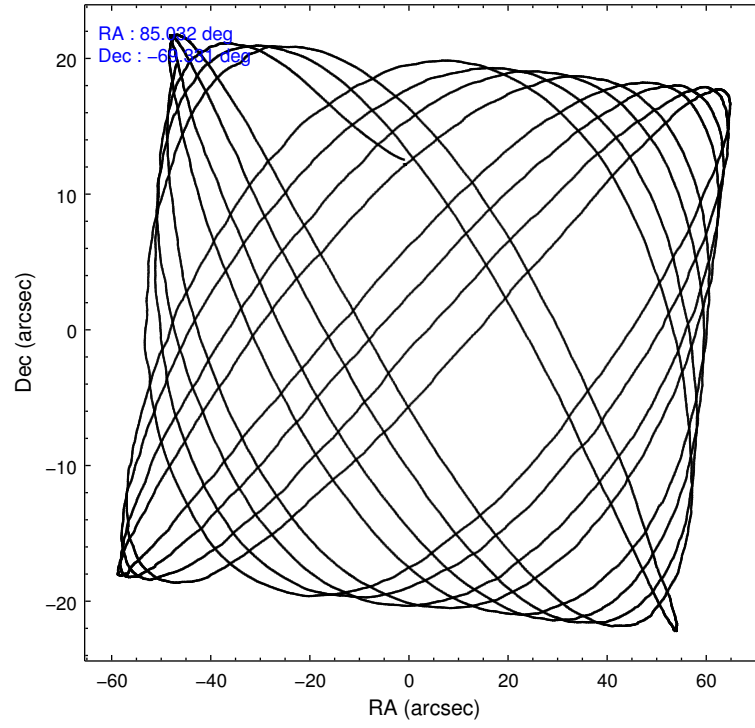


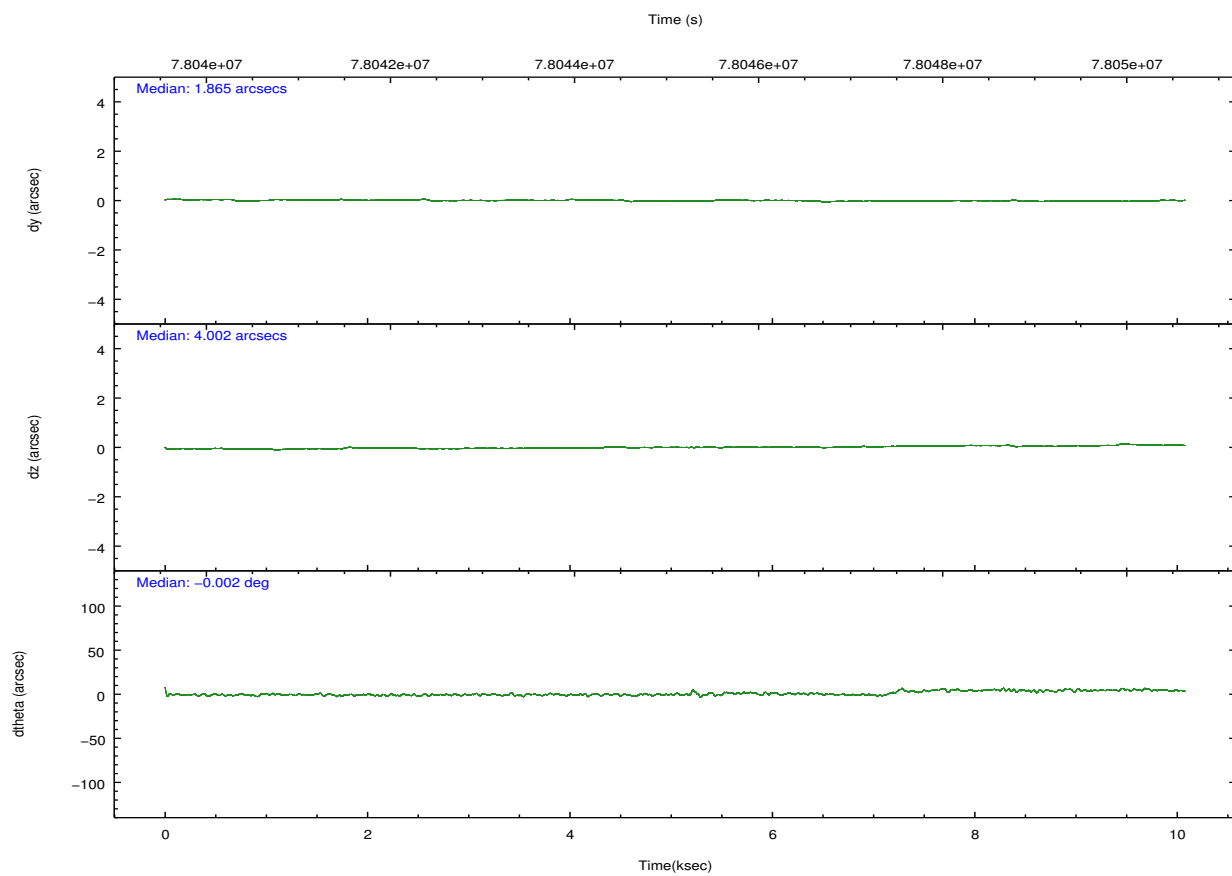
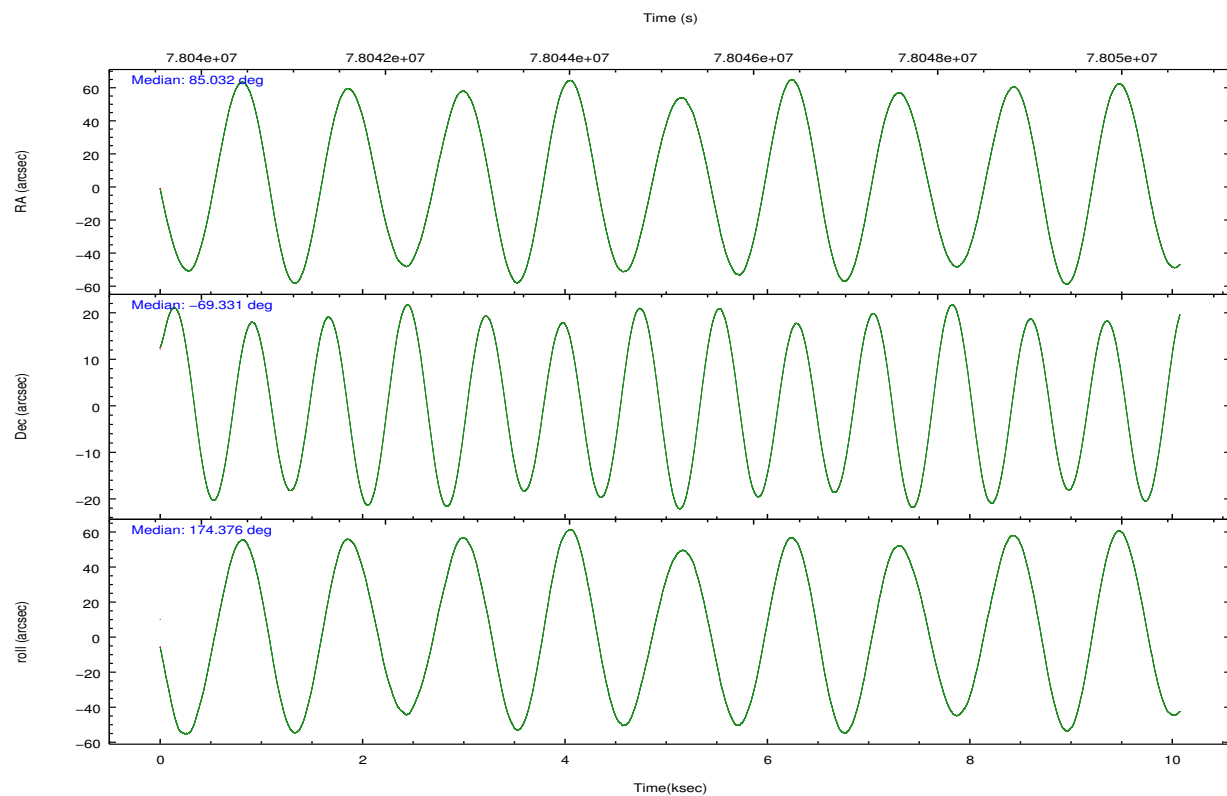
## 2.2 Compared Parameters

Parameter	Planned	Actual
Instrument	HRC	HRC
Detector	HRC-S	HRC-S
Grating	NONE	NONE
Data mode	OBSERVING	OBSERVING
Observation mode	POINTING	POINTING
[deg] Pointing RA	85.105132	85.0320129295158
[deg] Pointing Dec	-69.318310	-69.33122716460477
[deg] Pointing Roll	174.380454	174.3793802807043
[mm] SIM focus pos	-1.429586	-1.428180813131781
[mm] SIM defocus	0.1037507710433287	0.1051558262725154
[mm] SIM translation stage pos	250.455976	250.466033080201
[mm] SIM translation stage offset	0	-0.01005468664627074
[s] Observation start time (MET)	78040247.184000	78039873.636843
Observation start date	2000-06-22T05:49:43	2000-06-22T05:44:33
[s] Observation end time (MET)	78050132.184000	78050266.624726
Observation end date	2000-06-22T08:34:28	2000-06-22T08:37:46

Parameter	Planned	Actual
Obspar format version number	7	7
Obspar file type	PREDICTED	ACTUAL
Obspar update status	NONE	UPDATED

## 2.3 Aspect



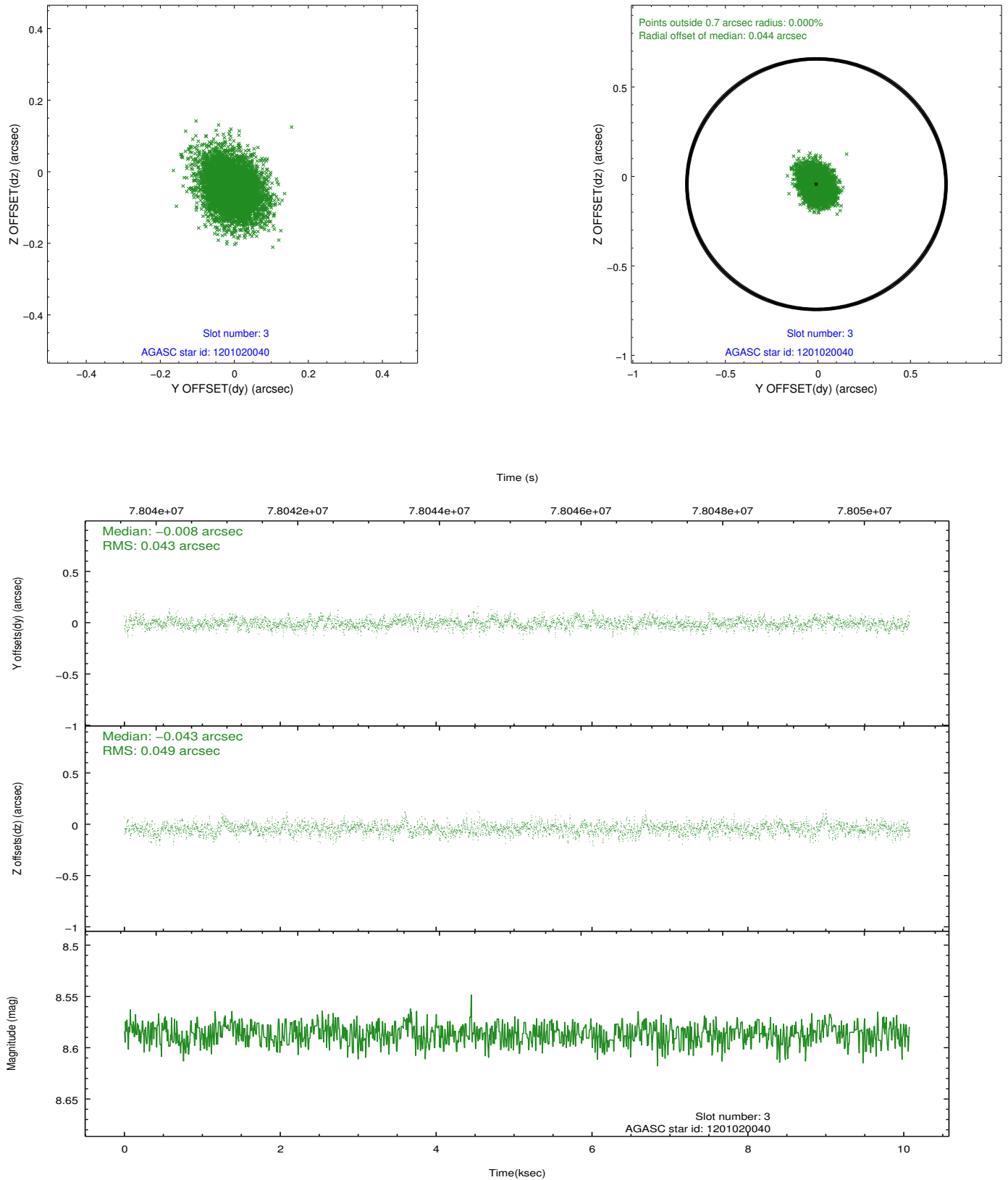


### Slot Statistics

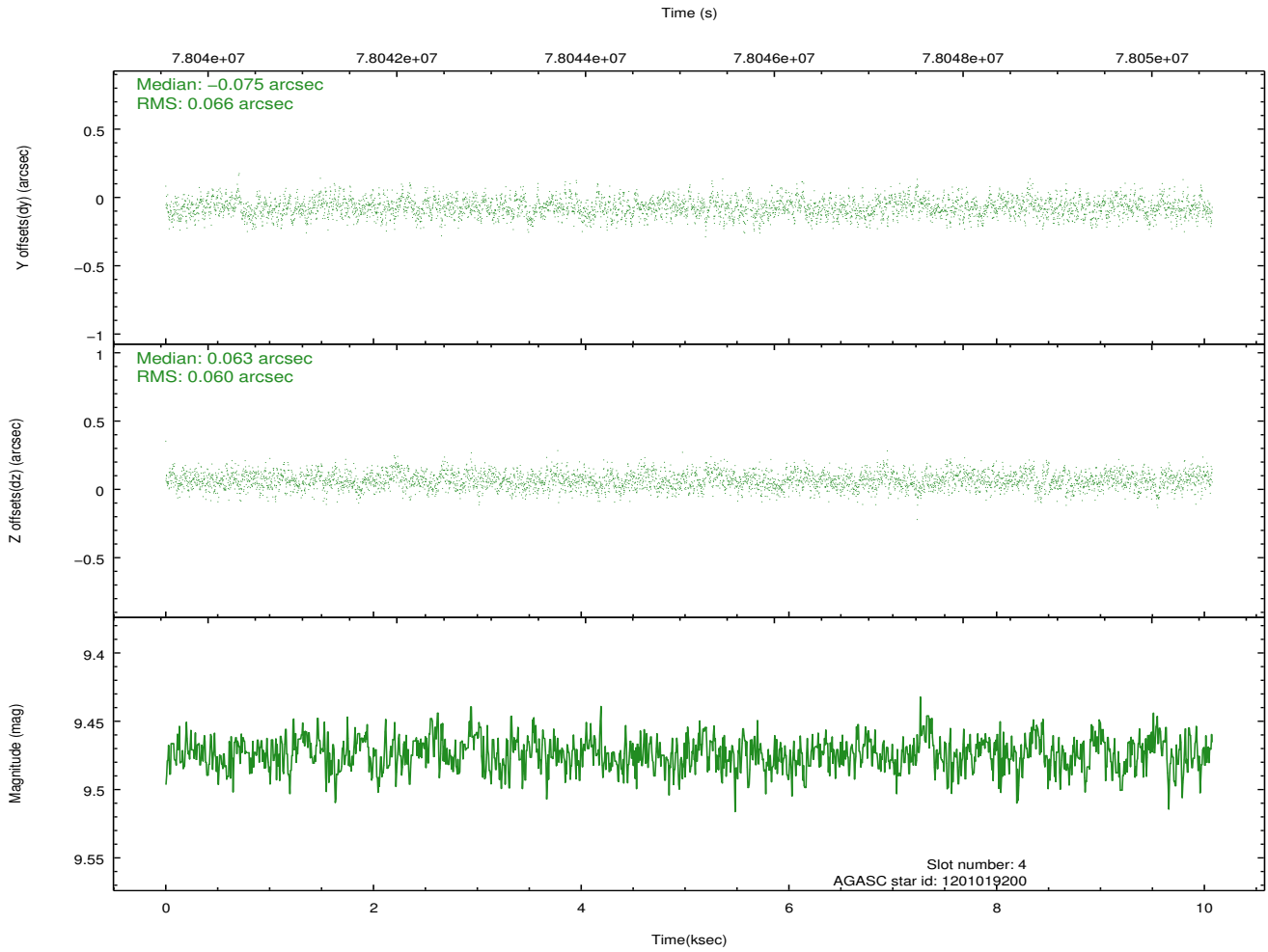
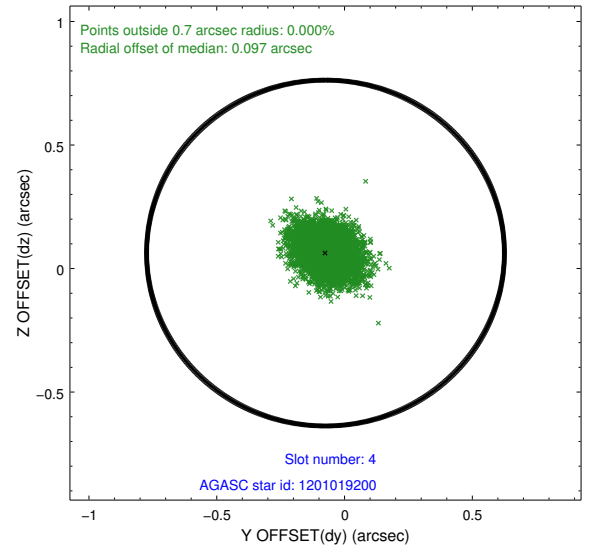
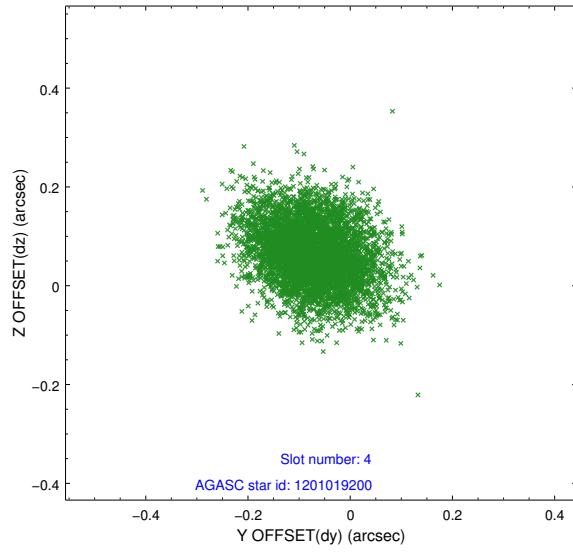
slot	status	id	mag	n_pts	med_dy	med_dz	dr1	dr2	ra	dec	mean_y	mean_z
0	FID	HRC-S-1	6.95	2458	0.125	-0.102	0.008	0.014	0.000000	0.000000	-1155.91	-452.40
1	FID	HRC-S-3	6.98	2458	0.135	-0.096	0.010	0.017	0.000000	0.000000	-1159.06	576.95
2	FID	HRC-S-4	6.92	2458	0.128	-0.098	0.006	0.009	0.000000	0.000000	1241.91	579.84
3	GUIDE	1201020040	8.59	4913	-0.008	-0.043	0.068	0.115	85.379163	-68.879396	-198.55	-1606.36
4	GUIDE	1201019200	9.47	4913	-0.075	0.063	0.094	0.154	84.213591	-68.777384	1346.59	-1815.80
5	GUIDE	1201406992	9.27	4912	0.061	-0.061	0.081	0.136	83.682859	-69.471866	1731.31	746.60
6	GUIDE	1200885760	9.47	4911	-0.088	0.080	0.096	0.155	83.723637	-68.777667	1981.02	-1739.98
7	GUIDE	1201020088	10.59	4911	0.105	-0.038	0.141	0.231	86.319248	-68.997756	-1446.36	-1286.69

## 2.4 Star Slots

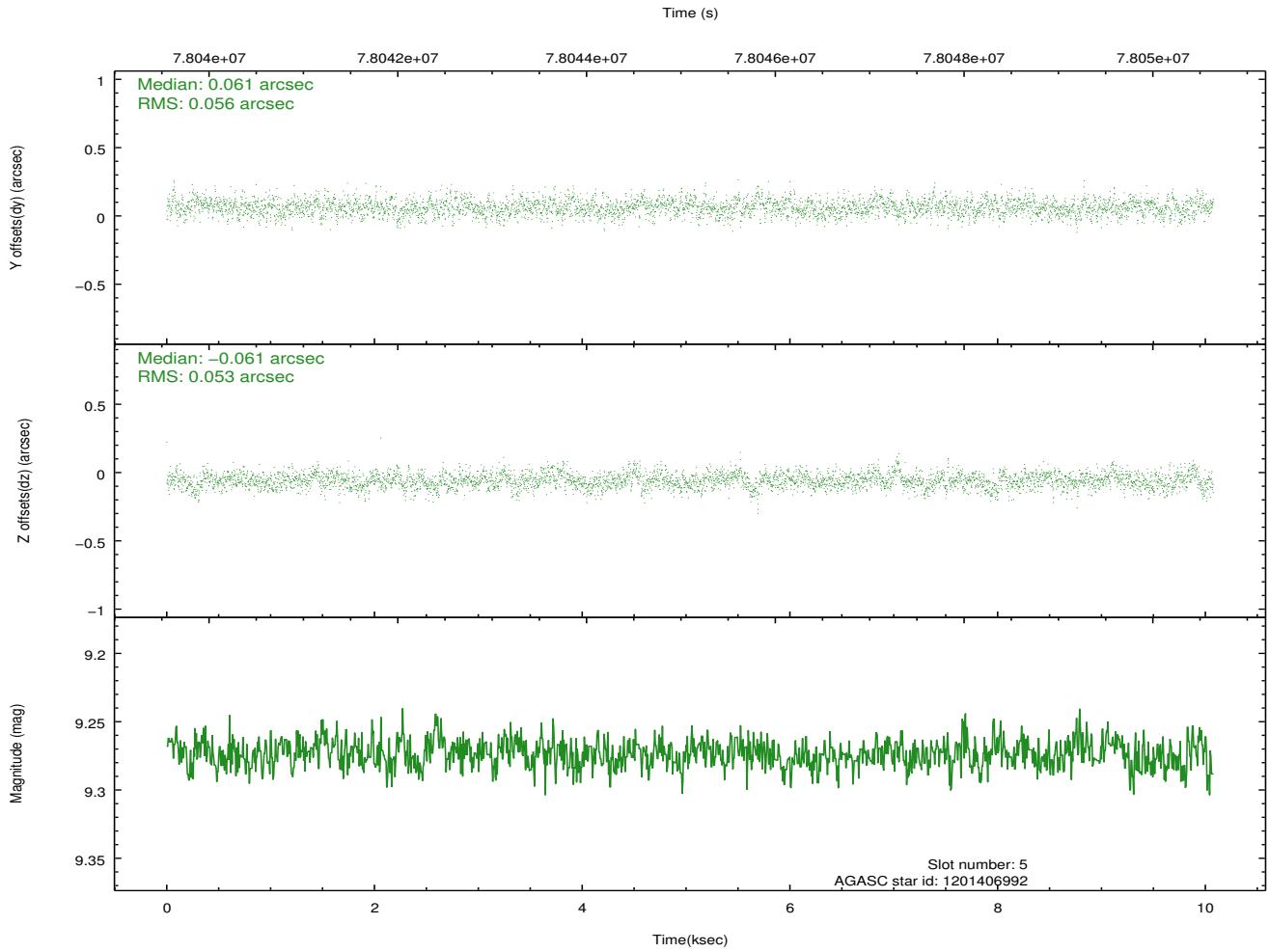
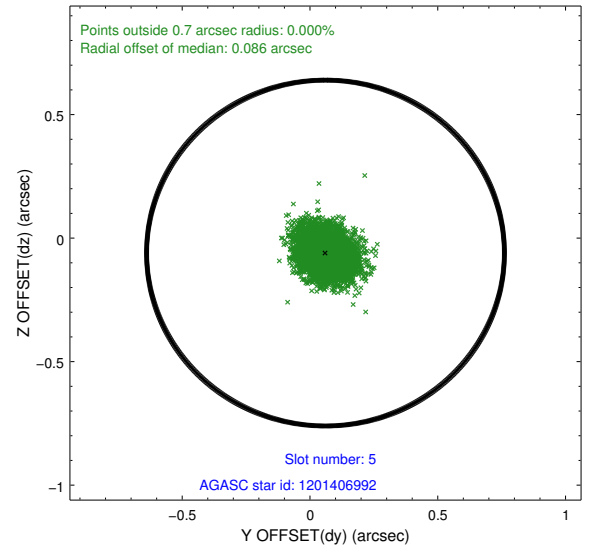
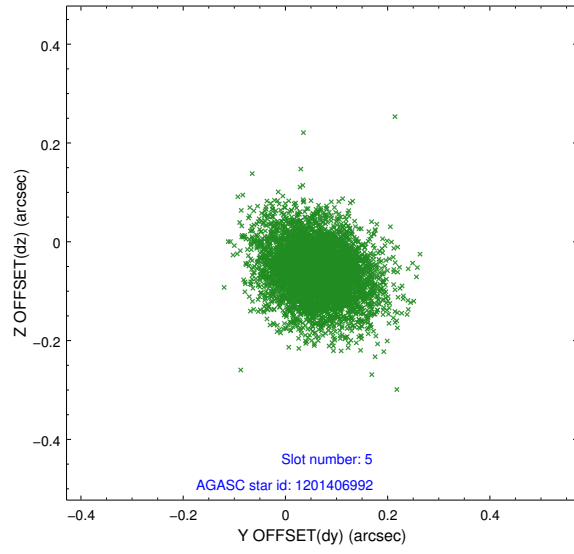
### 2.4.1 Slot 3



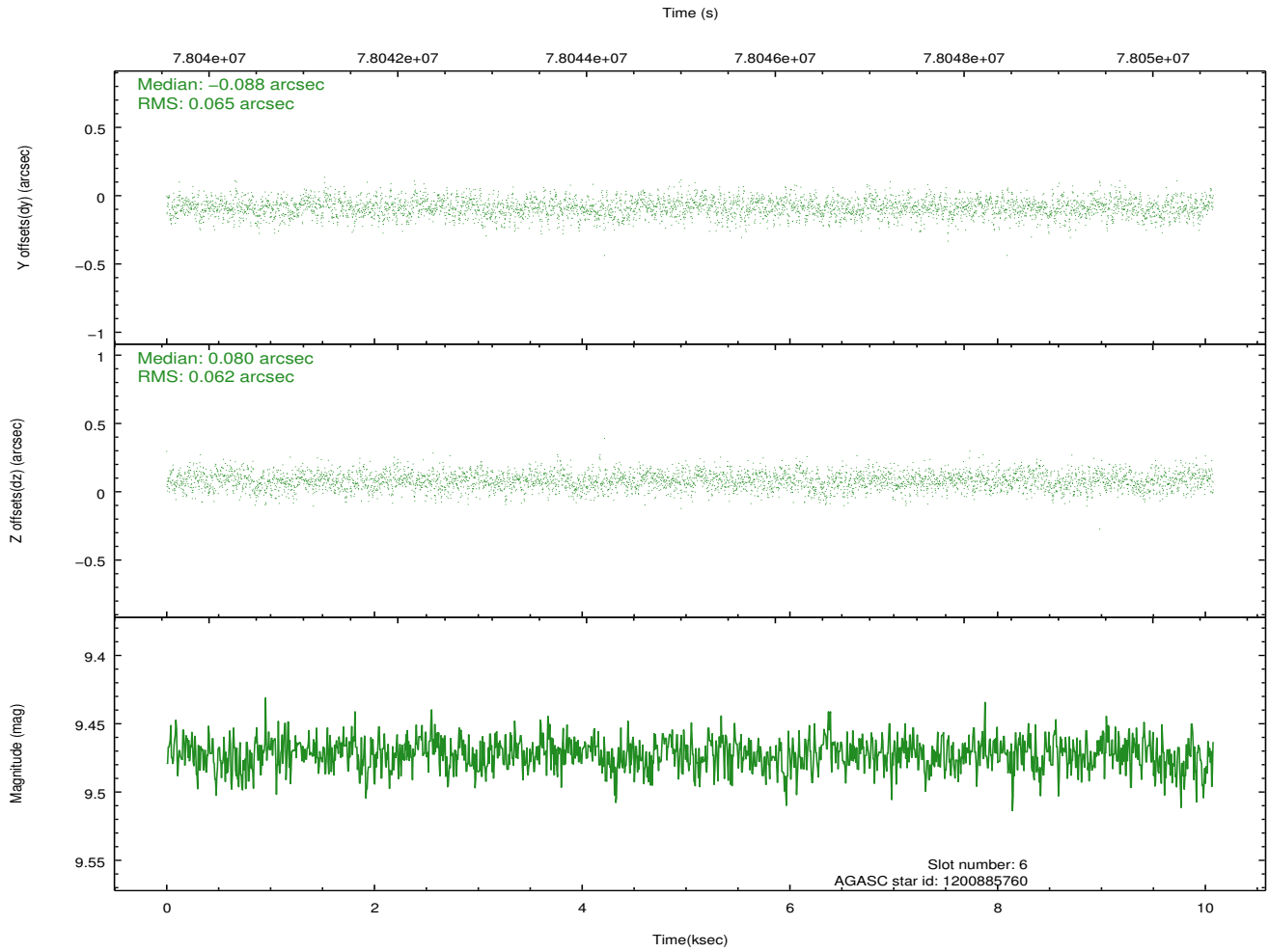
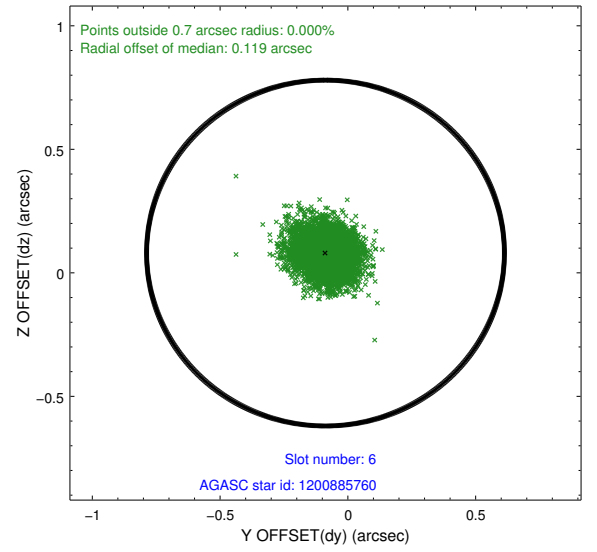
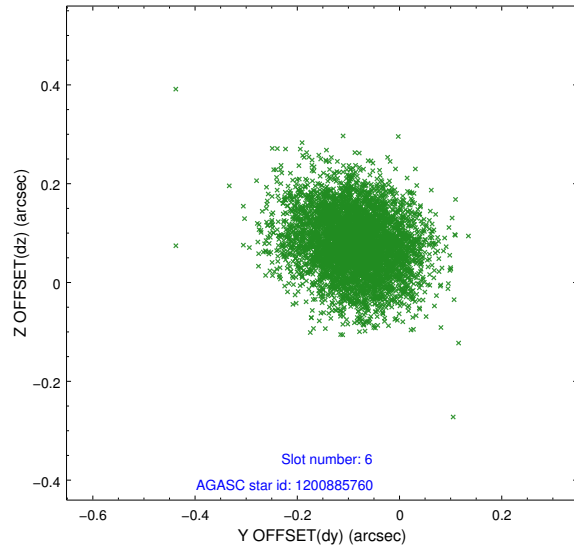
## 2.4.2 Slot 4



### 2.4.3 Slot 5

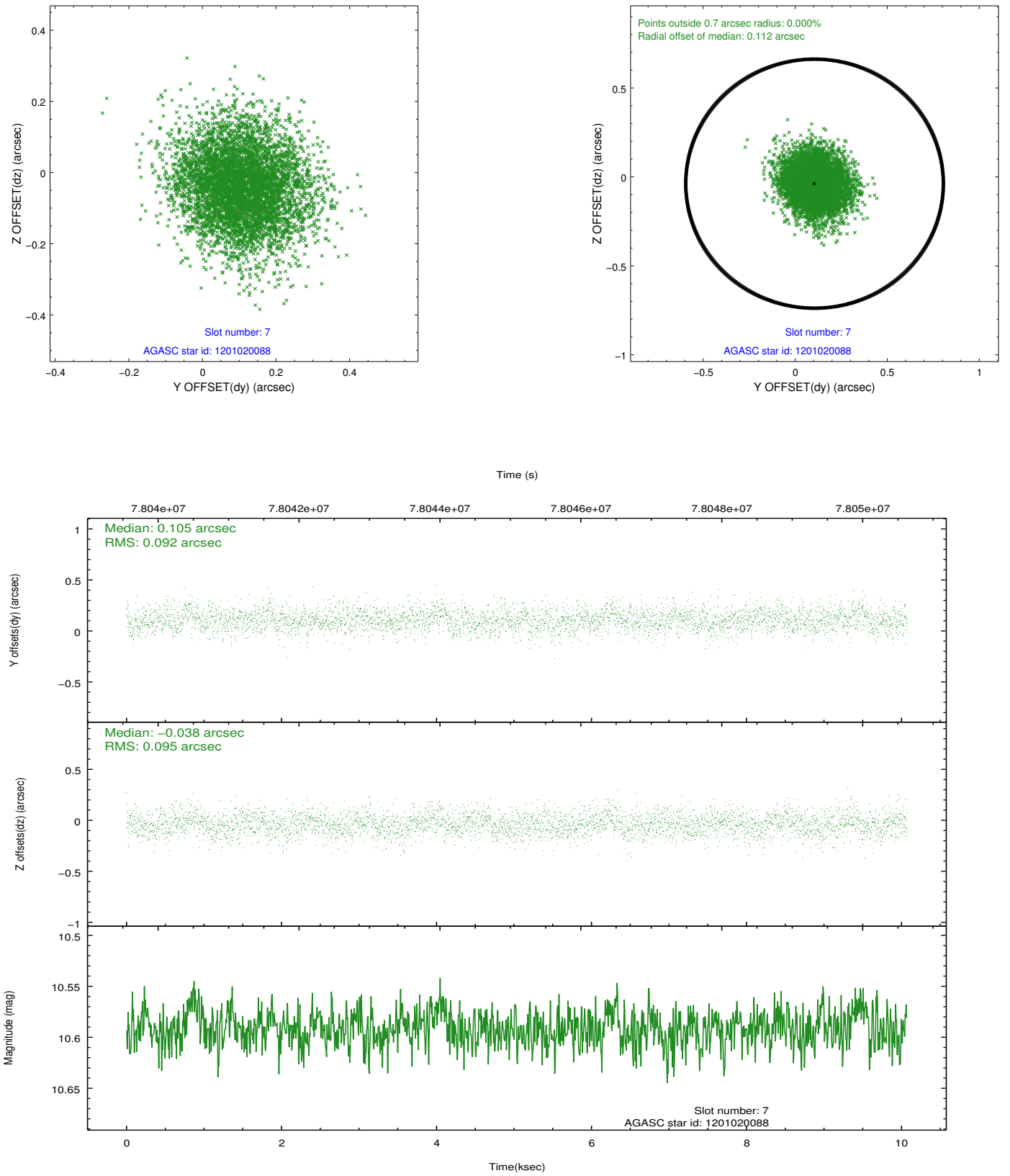


## 2.4.4 Slot 6



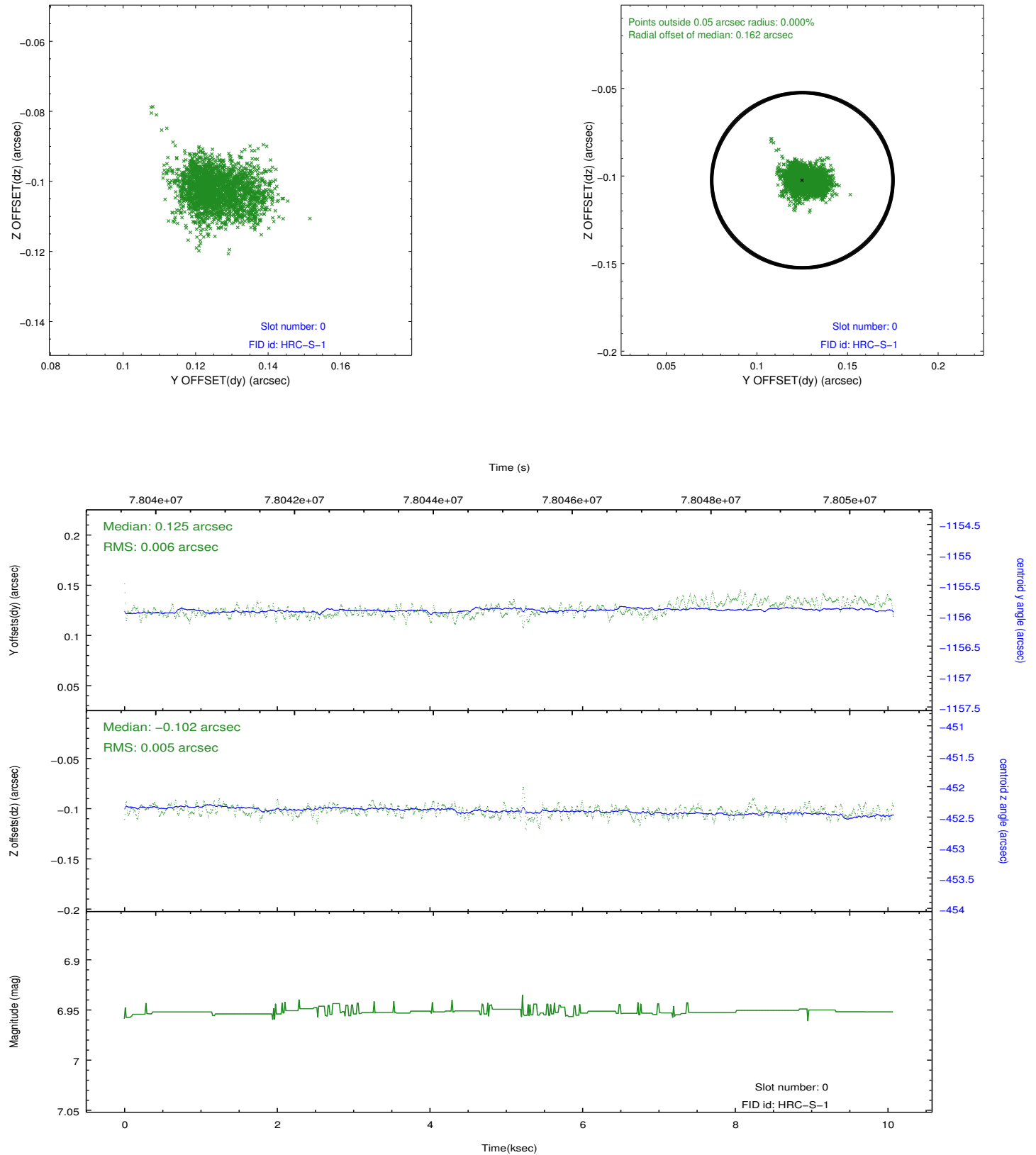


## 2.4.5 Slot 7

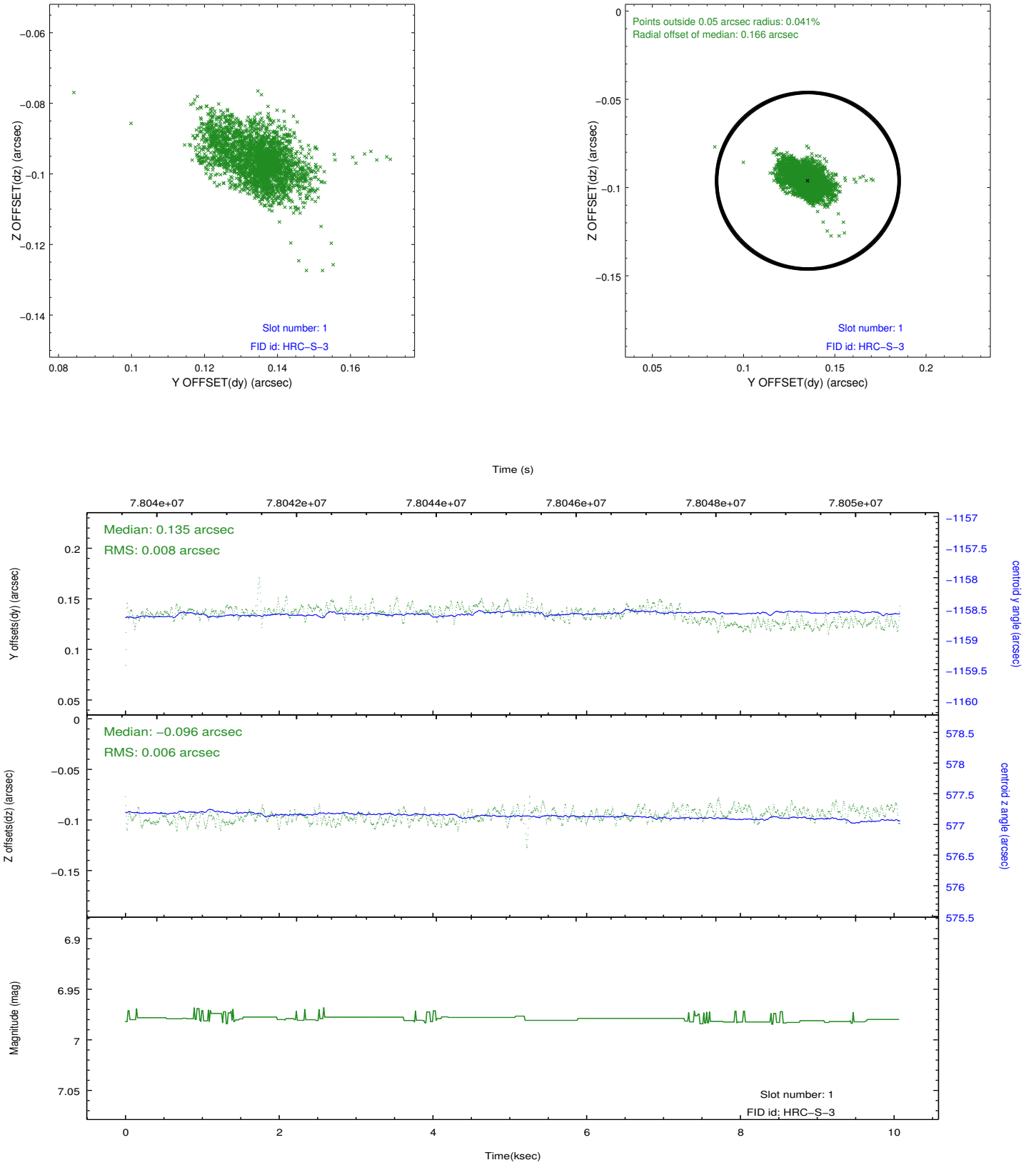


## 2.5 FID Slots

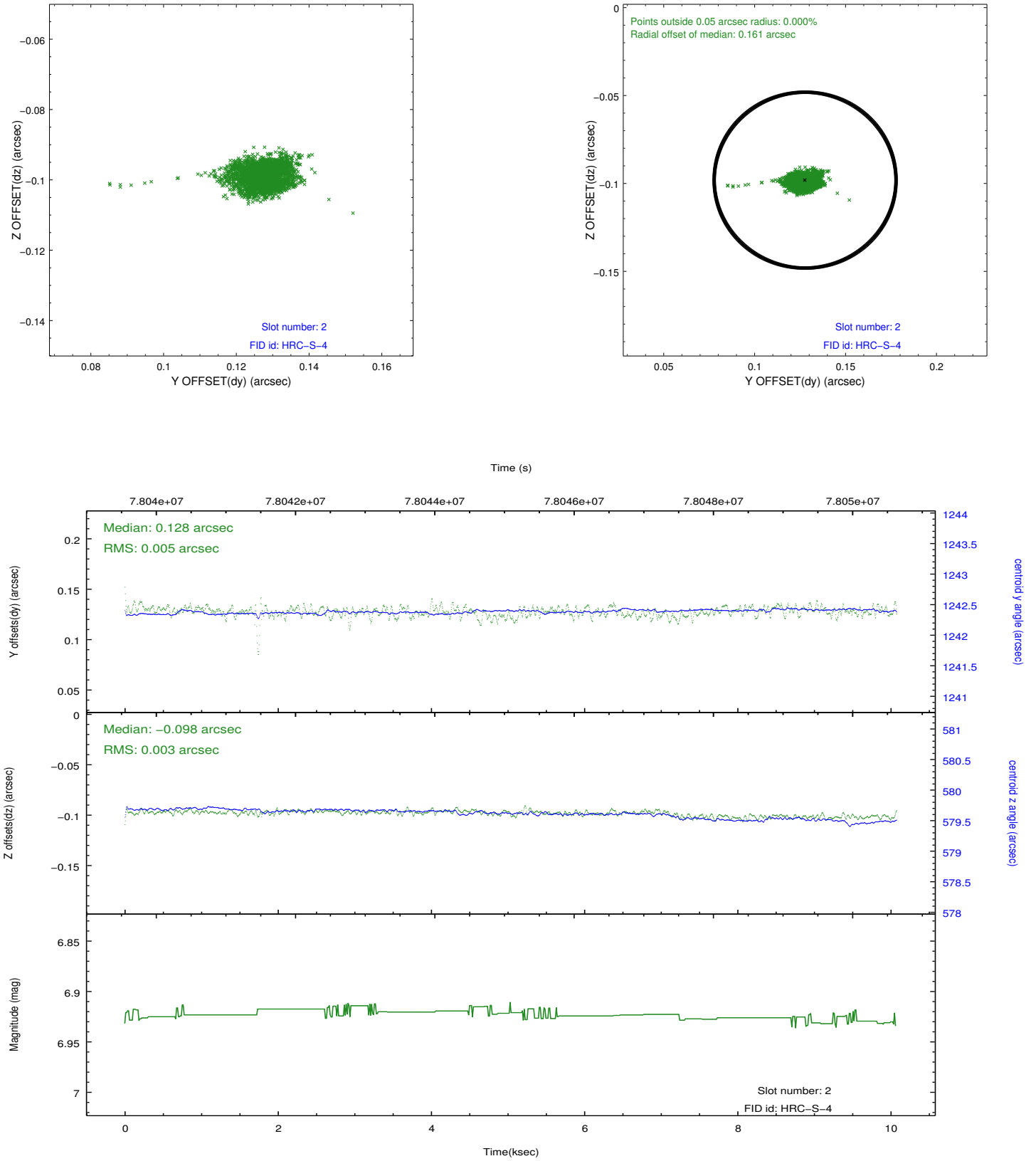
### 2.5.1 Slot 0



## 2.5.2 Slot 1



### 2.5.3 Slot 2



## A Summary

### A.1 Status

V&V Scientist	Jen Lauer
V&V Date (YYYY-MM-DD)	2012.08.31
V&V Edition	1
V&V Disposition and Status	OK
V&V Charge Time	9.738

### A.2 Comments