

# V&V Reference Report

## L2 ASCDS Version : 10.3.3

Observation 16677 - L2 Version 1  
Chandra X-Ray Center

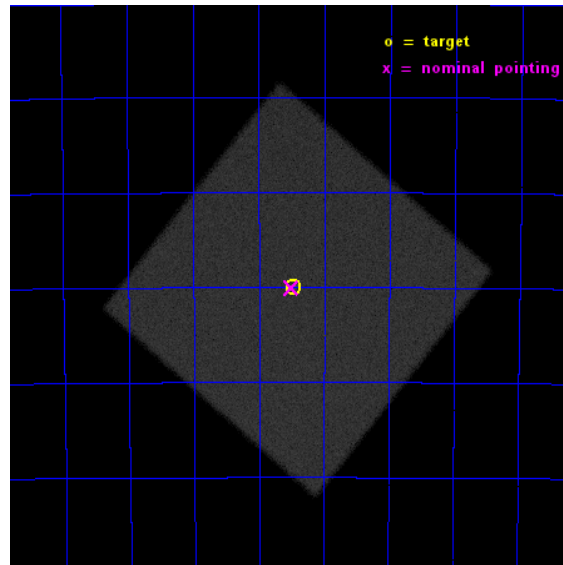
L2 Processing Date : May 7 2015

## Contents

<b>1</b>	<b>Front</b>	<b>2</b>
<b>2</b>	<b>OBI</b>	<b>3</b>
2.1	OBI . . . . .	3
2.1.1	Images . . . . .	3
2.1.2	Parameters . . . . .	4
2.1.3	Events . . . . .	4
2.2	Compared Parameters . . . . .	5
2.3	Aspect . . . . .	6
2.4	Star Slots . . . . .	9
2.4.1	Slot 3 . . . . .	9
2.4.2	Slot 4 . . . . .	10
2.4.3	Slot 5 . . . . .	11
2.4.4	Slot 6 . . . . .	12
2.4.5	Slot 7 . . . . .	13
2.5	FID Slots . . . . .	14
2.5.1	Slot 0 . . . . .	14
2.5.2	Slot 1 . . . . .	15
2.5.3	Slot 2 . . . . .	16
<b>A</b>	<b>Summary</b>	<b>17</b>
A.1	Status . . . . .	17
A.2	Comments . . . . .	17

# 1 Front

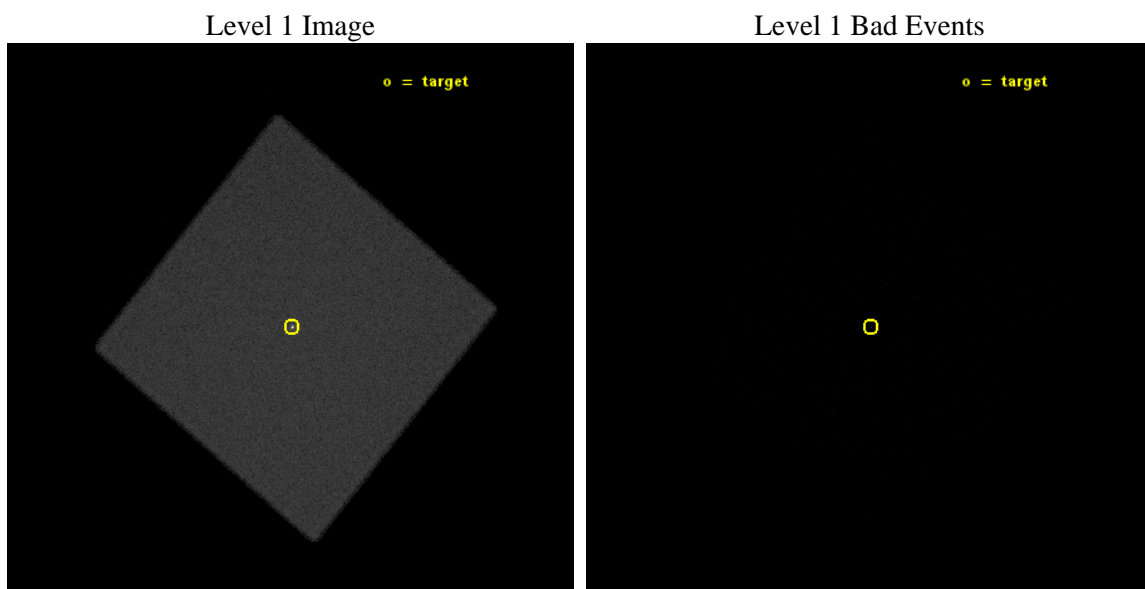
seq_num	200998	Sequence number
obs_id	16677	Observation id
title	Alpha Centauri at a Crossroads	Proposal title
observer	Dr. Thomas Ayres	Principal investigator
object	ALPHA CEN	Source name
ra_targ	219.867917	Observer's specified target RA [deg]
dec_targ	-60.832556	Observer's specified target Dec [deg]
ra_nom	219.87553123595	Nominal RA [deg]
dec_nom	-60.834435219345	Nominal Dec [deg]
roll_nom	354.75976488691	Nominal Roll [deg]
revision	1	Processing version of data
ontime	10146.731819034	[s]
livetime	10072.488771738	Ontime multiplied by DTCOR
l2events	604387	Number of level 2 events



## 2 OBI

### 2.1 OBI

#### 2.1.1 Images



### 2.1.2 Parameters

obi_num	0	Obi number	sched_exp_time	10000.000000	[s] Scheduled observation exposure time
ascdsver	10.3.3	Processing system revision	ontime	10146.731819034	[s]
caldsver	4.6.7	&#160	l1events	874946	Number of level 1 events
date	2015-05-07T17:29:34	Date and time of file creation			
revision	1	Processing version of data			

### 2.1.3 Events

#### Level 1 Events

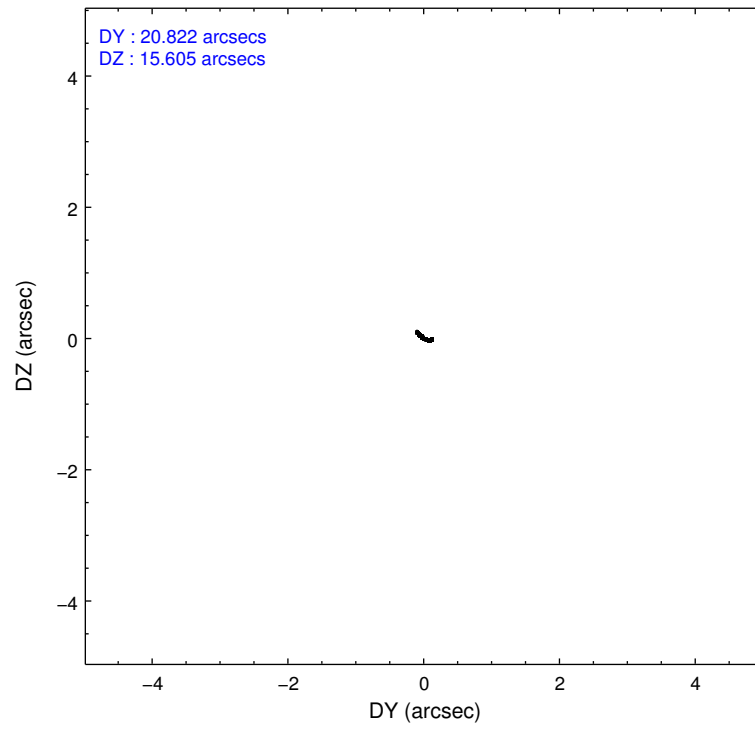
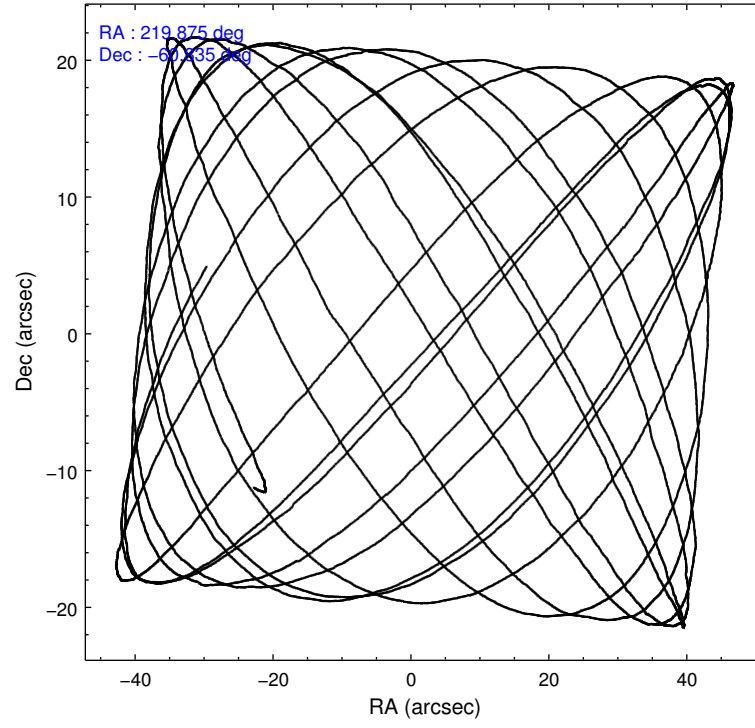
	<b>segment 0</b>
level 1 events	874946
rejected events	75086
rejected %	8%

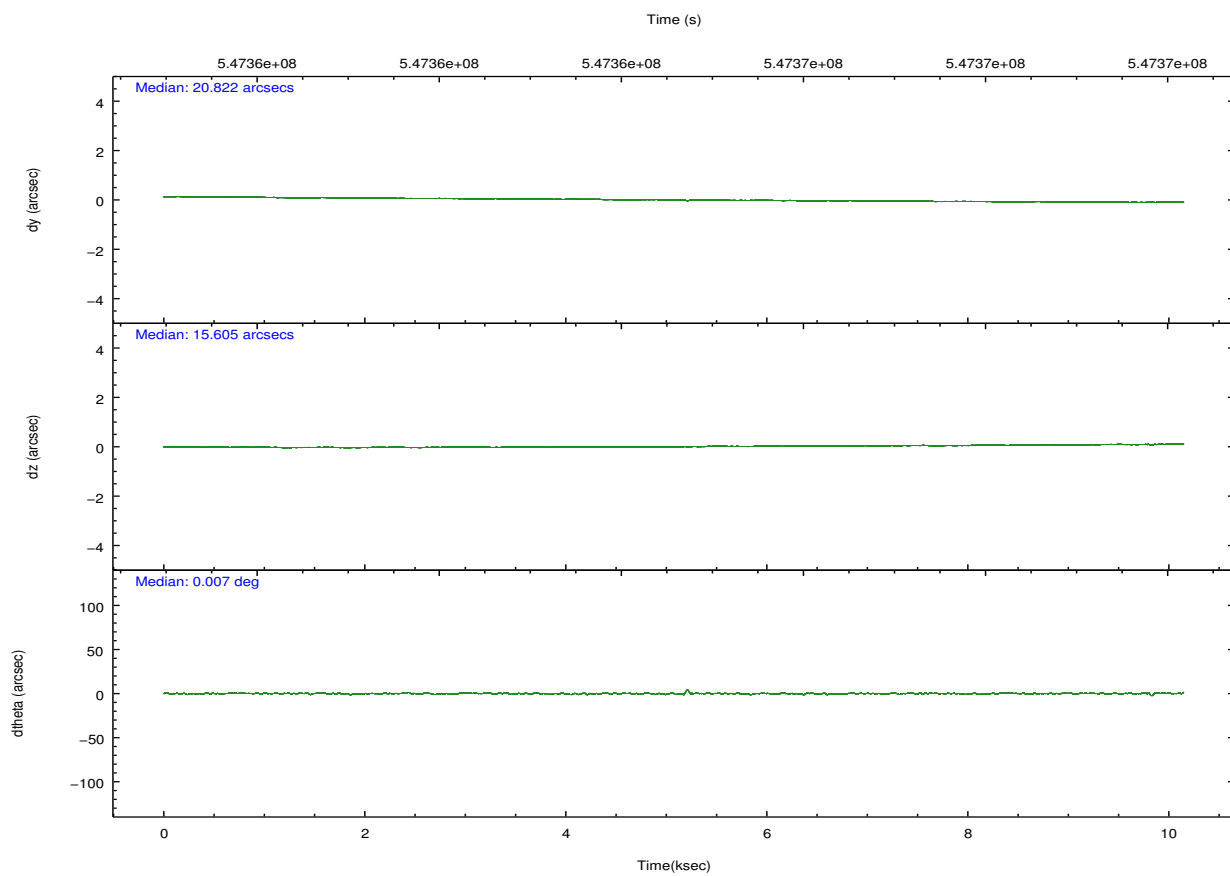
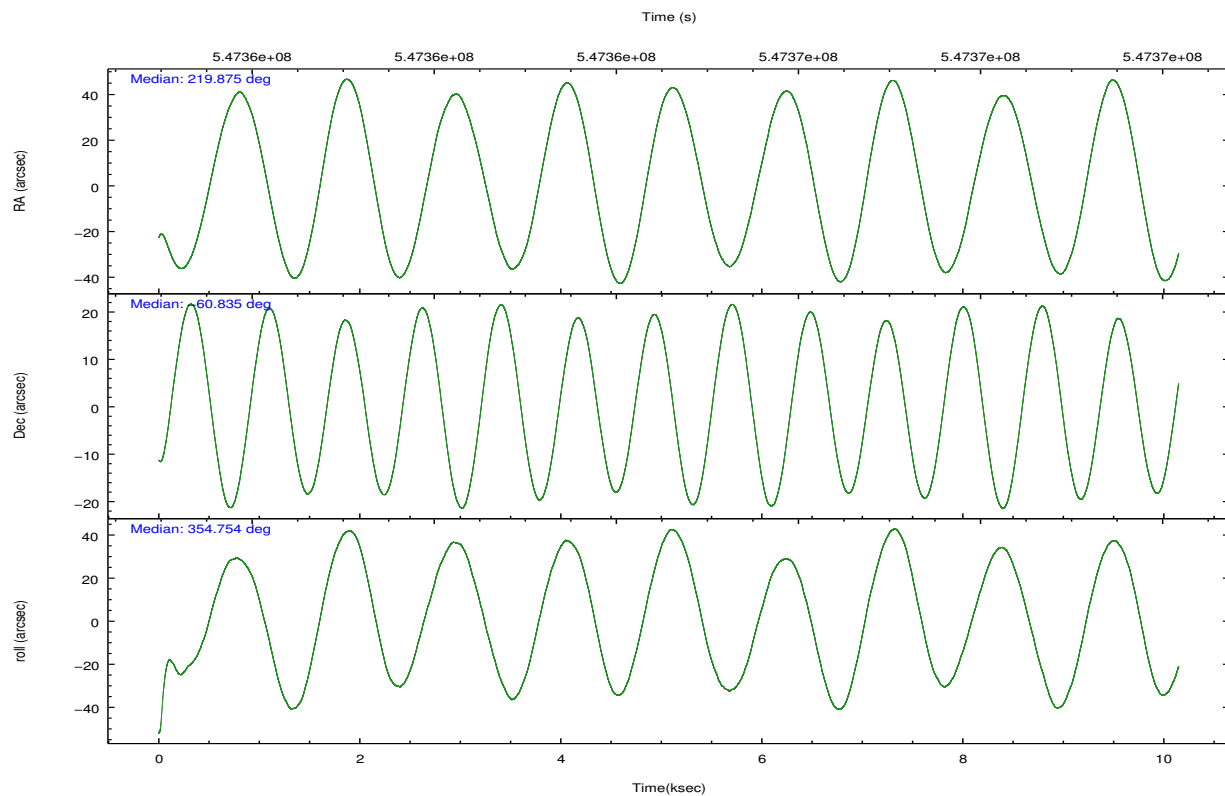


## 2.2 Compared Parameters

Parameter	Planned	Actual	Parameter	Planned	Actual
Instrument	HRC	HRC	Obspar format version number	7	7
Detector	HRC-I	HRC-I	Obspar file type	PREDICTED	ACTUAL
Grating	NONE	NONE	Obspar update status	NONE	UPDATED
Data mode	OBSERVING	OBSERVING			
Observation mode	POINTING	POINTING			
[deg] Pointing RA	219.825504	219.8755312359486			
[deg] Pointing Dec	-60.846416	-60.83443521934488			
[deg] Pointing Roll	354.811624	354.7597648869056			
[mm] SIM focus pos	-1.040293	-1.038866356238299			
[mm] SIM defocus	0	0.001426264420575141			
[mm] SIM translation stage pos	126.985494	126.9804656746847			
[mm] SIM translation stage offset	0	0.005023216916882234			
[s] Observation start time (MET)	547359637.184000	547358573.31164			
Observation start date	2015-05-07T04:19:30	2015-05-07T04:02:53			
[s] Observation end time (MET)	547369637.184000	547370867.67483			
Observation end date	2015-05-07T07:06:10	2015-05-07T07:27:47			

## 2.3 Aspect



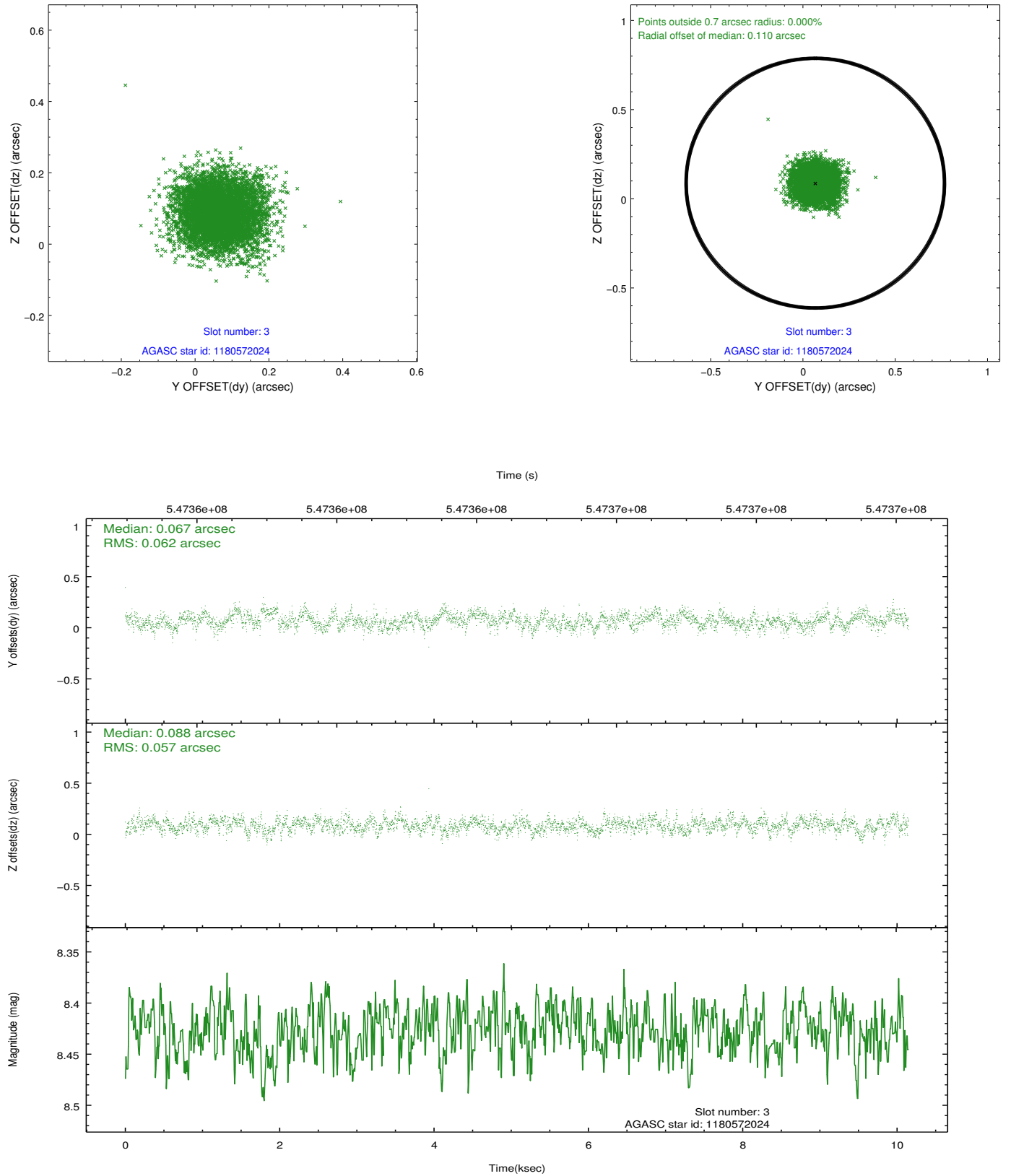


### Slot Statistics

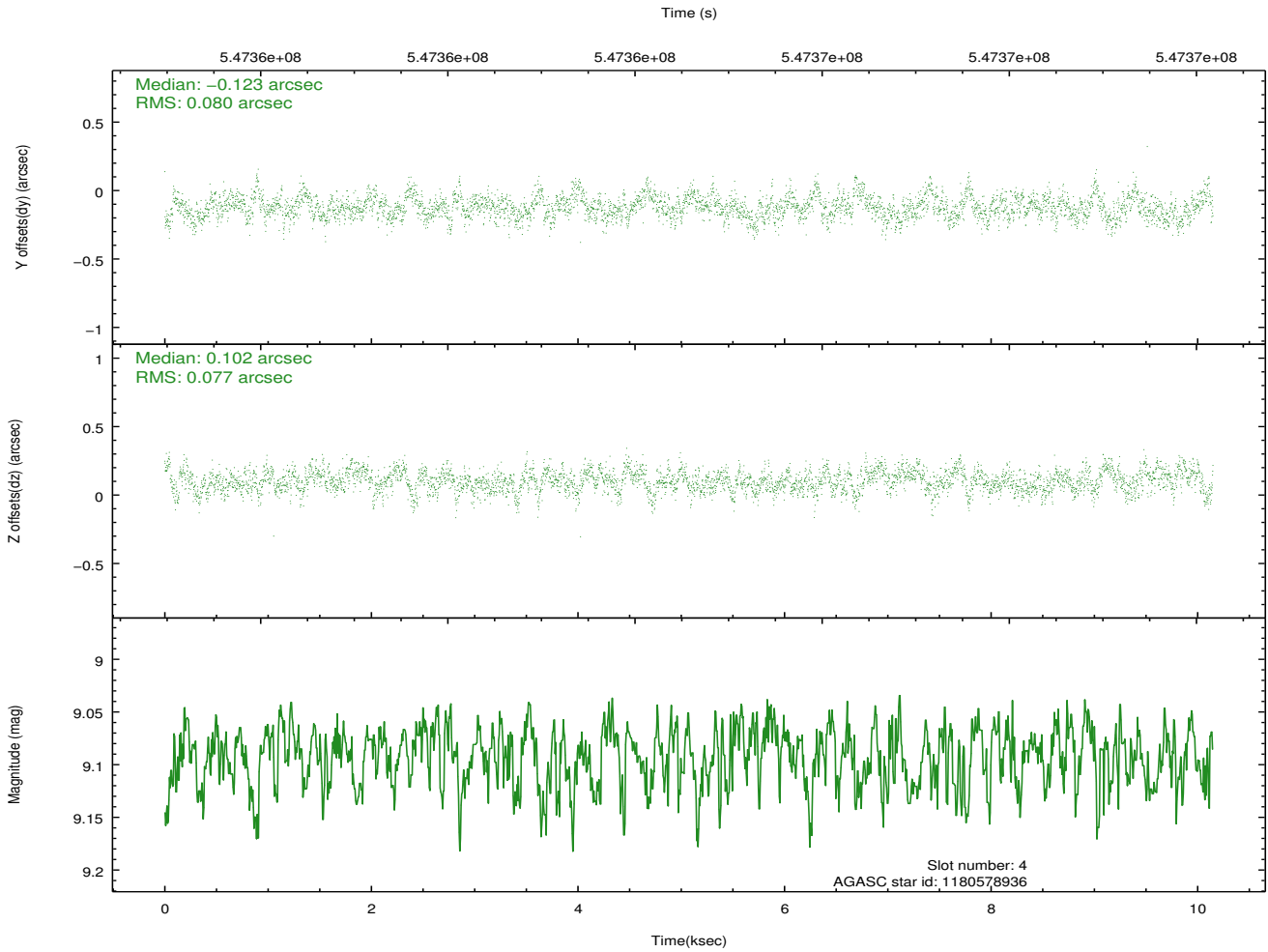
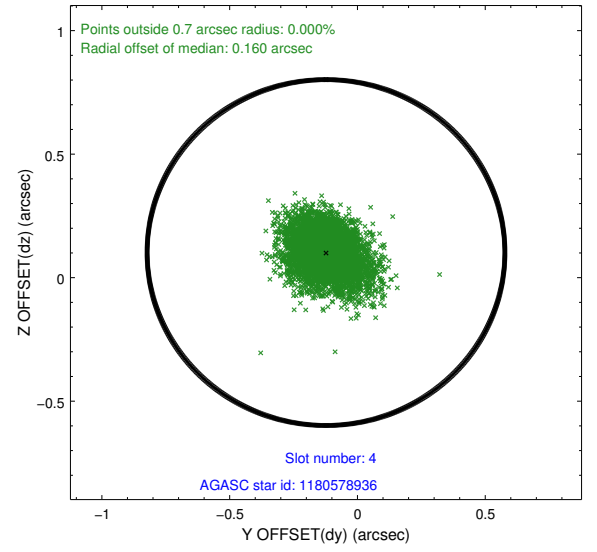
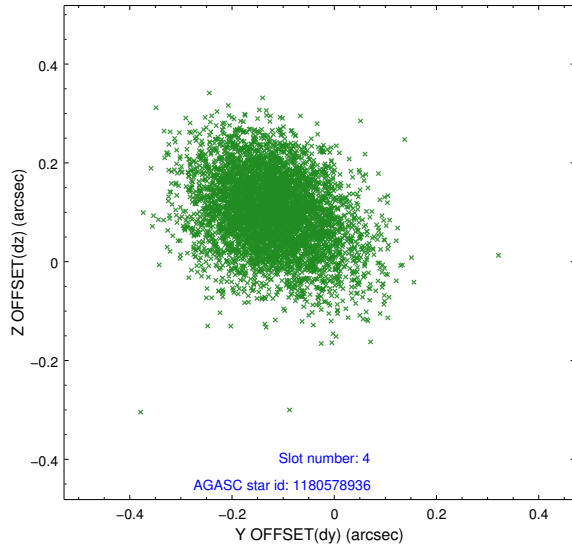
slot	status	used	id	mag	n_pts	med_dy	med_dz	dr1	dr2	ra	dec	mean_y	mean_z
0	FID		HRC-I-1	6.96	2475	-0.133	0.009	0.008	0.012	0.000000	0.000000	-776.88	-1303.69
1	FID		HRC-I-2	6.99	2475	0.228	-0.056	0.009	0.016	0.000000	0.000000	835.79	-1305.80
2	FID		HRC-I-3	7.05	2475	0.024	-0.042	0.008	0.016	0.000000	0.000000	-1204.94	1000.29
3	GUIDE	used	1180572024	8.43	4948	0.067	0.088	0.090	0.144	220.930377	-60.981487	1967.76	-325.49
4	GUIDE	used	1180578936	9.09	4951	-0.123	0.102	0.116	0.195	220.919358	-61.155393	1995.05	-951.33
5	GUIDE	used	1180606544	9.51	4944	-0.245	-0.123	0.143	0.240	218.967988	-60.174357	-1746.36	2260.49
6	GUIDE	used	1180607792	9.25	4948	0.302	0.106	0.134	0.214	218.783899	-60.204433	-2062.87	2119.15
7	GUIDE	used	1180612104	8.95	4950	0.006	-0.172	0.127	0.201	220.502279	-60.631704	1120.84	872.32

## 2.4 Star Slots

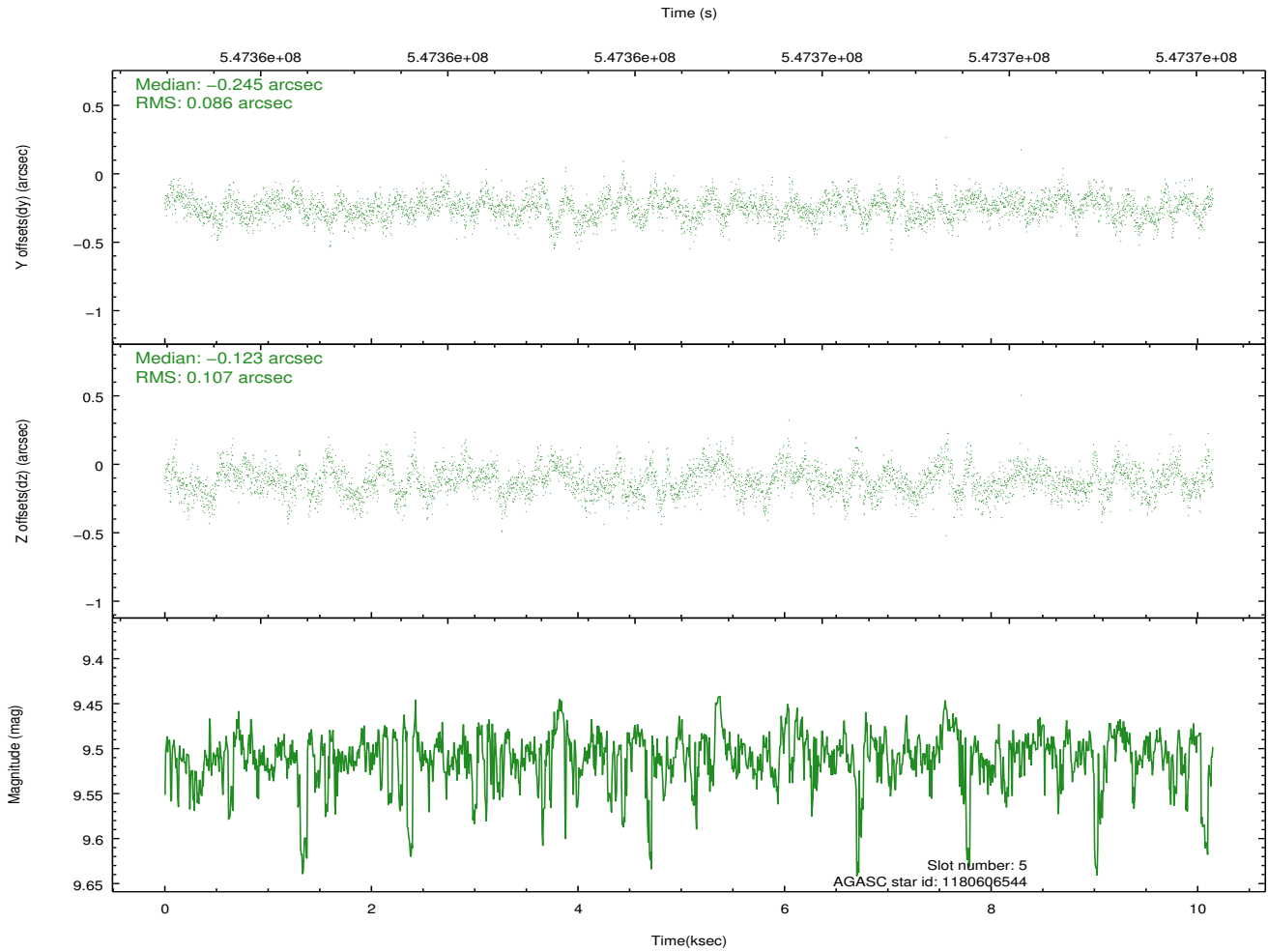
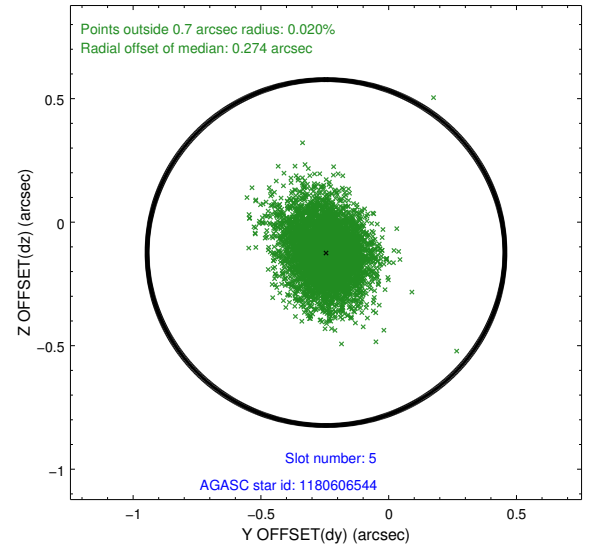
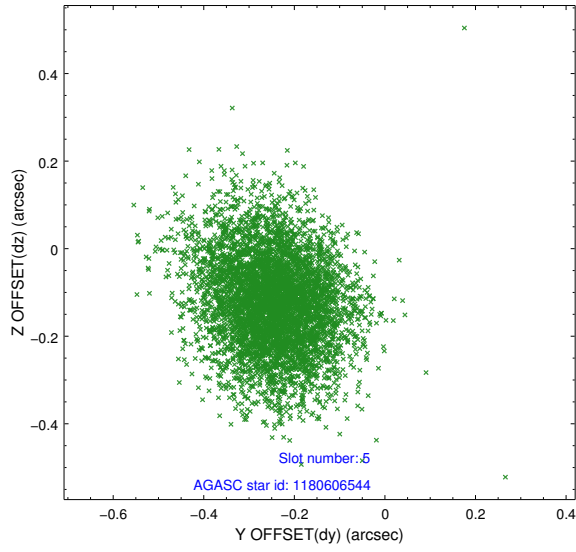
### 2.4.1 Slot 3



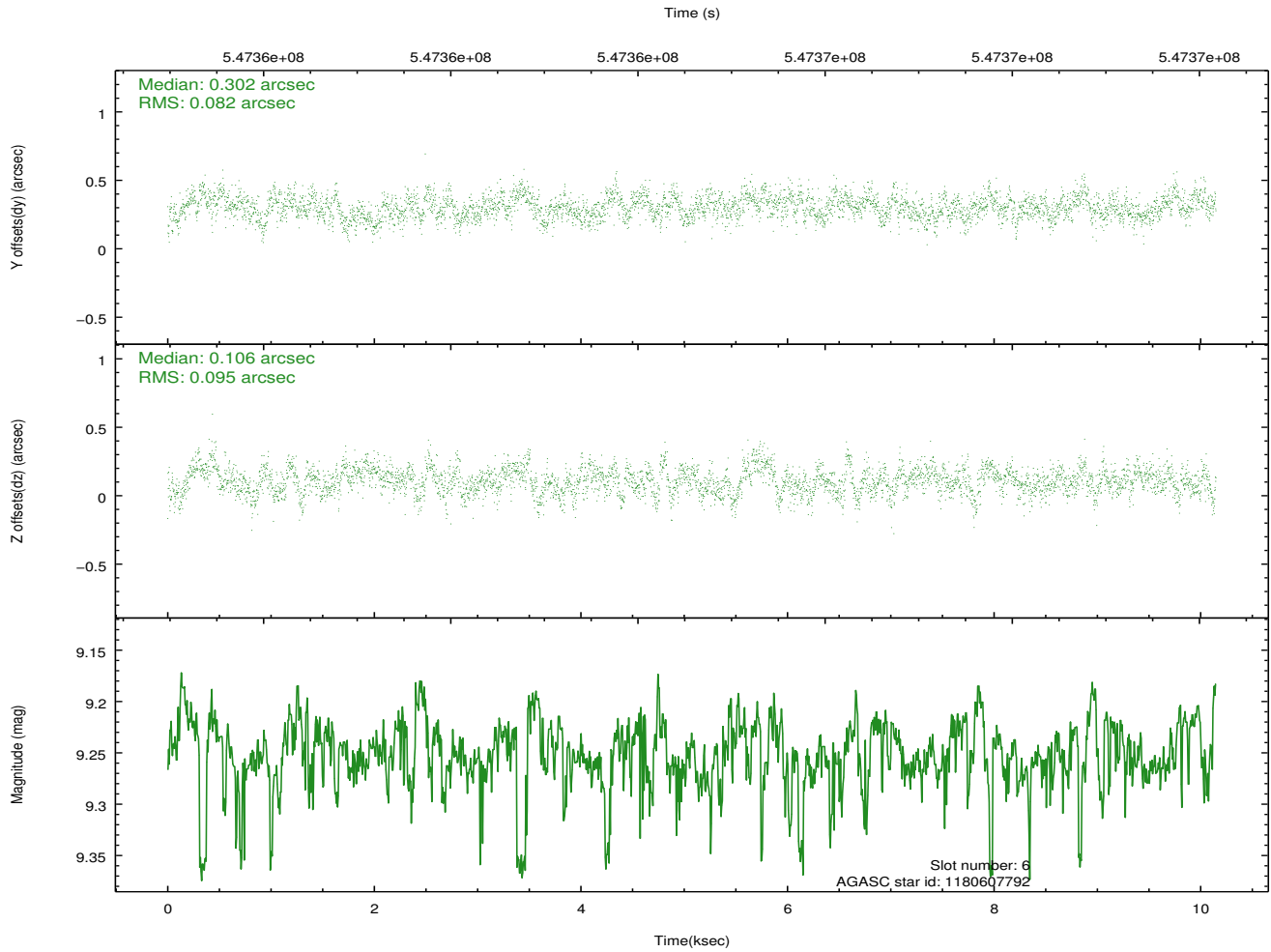
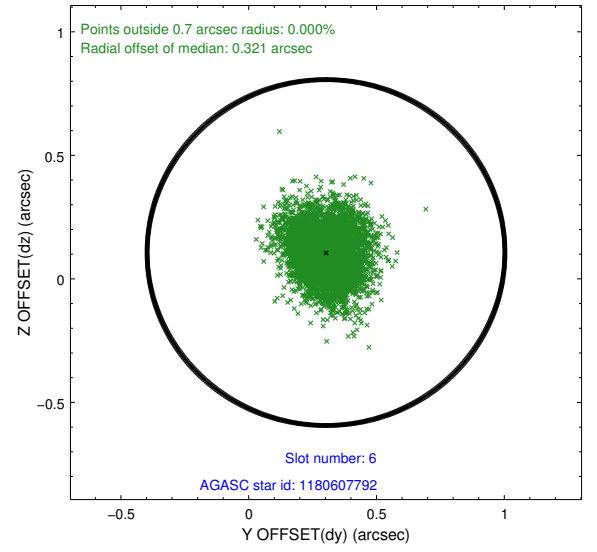
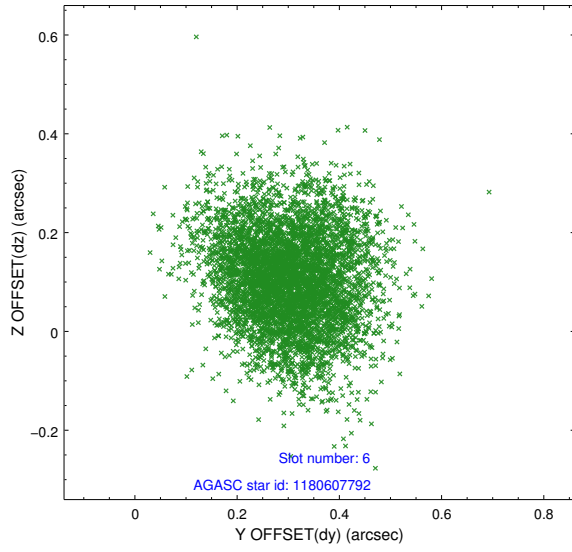
## 2.4.2 Slot 4



### 2.4.3 Slot 5

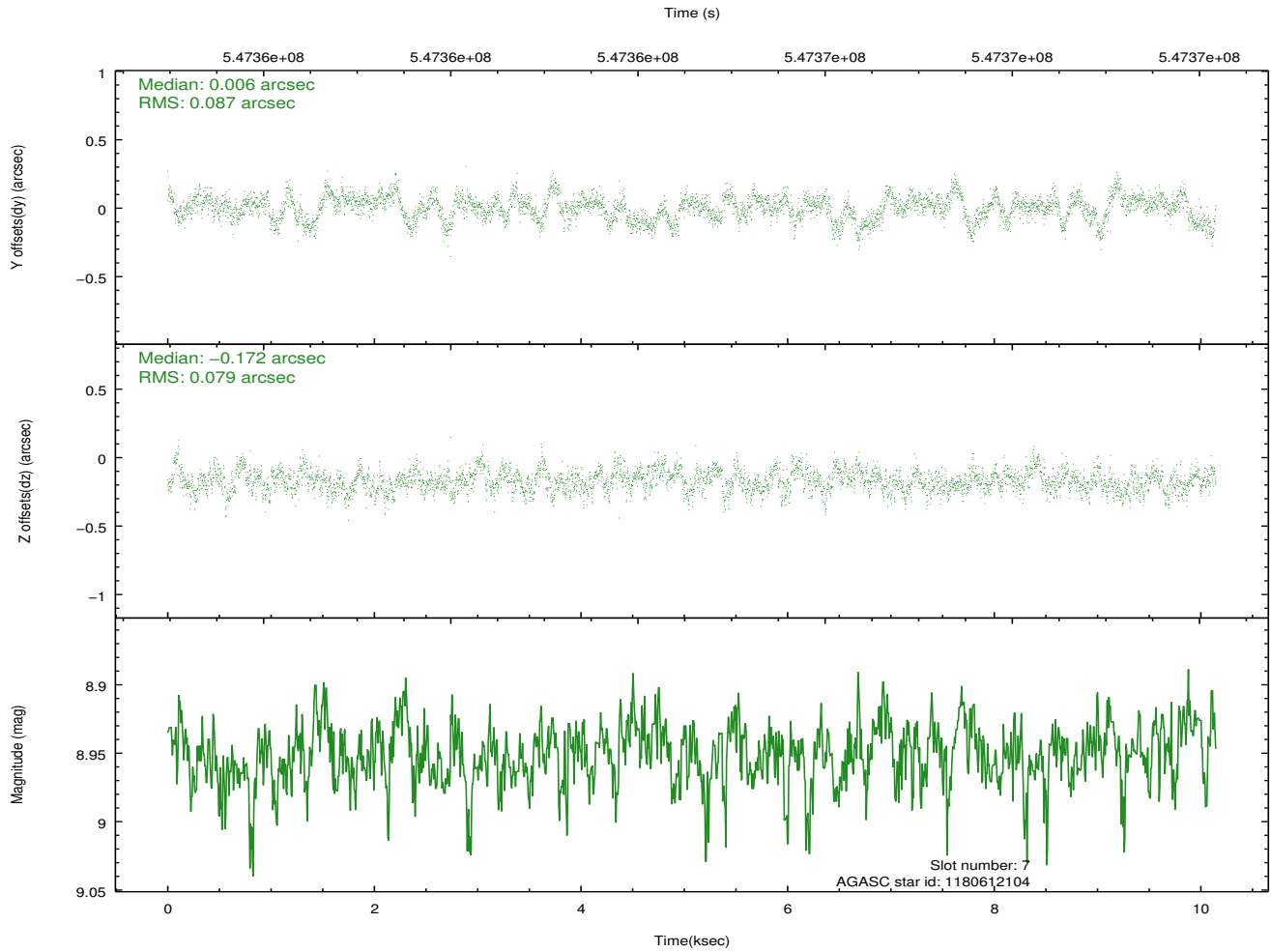
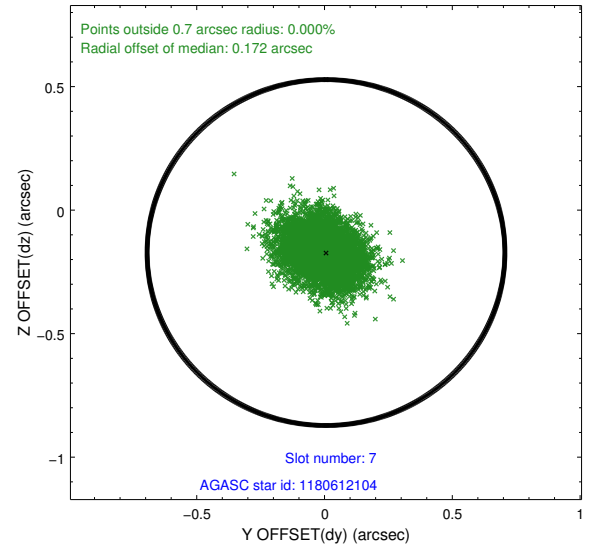
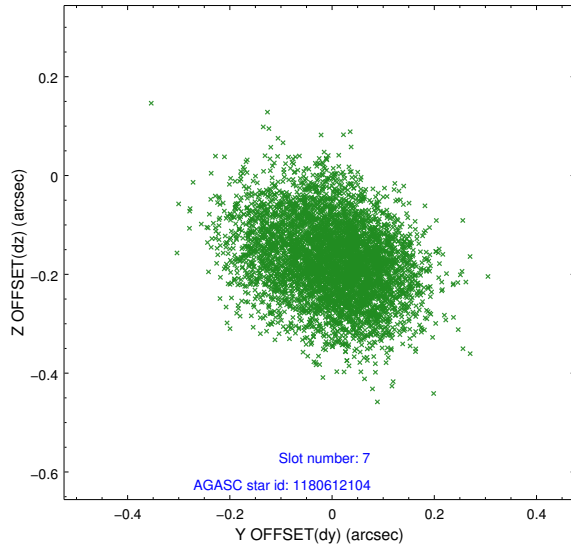


## 2.4.4 Slot 6



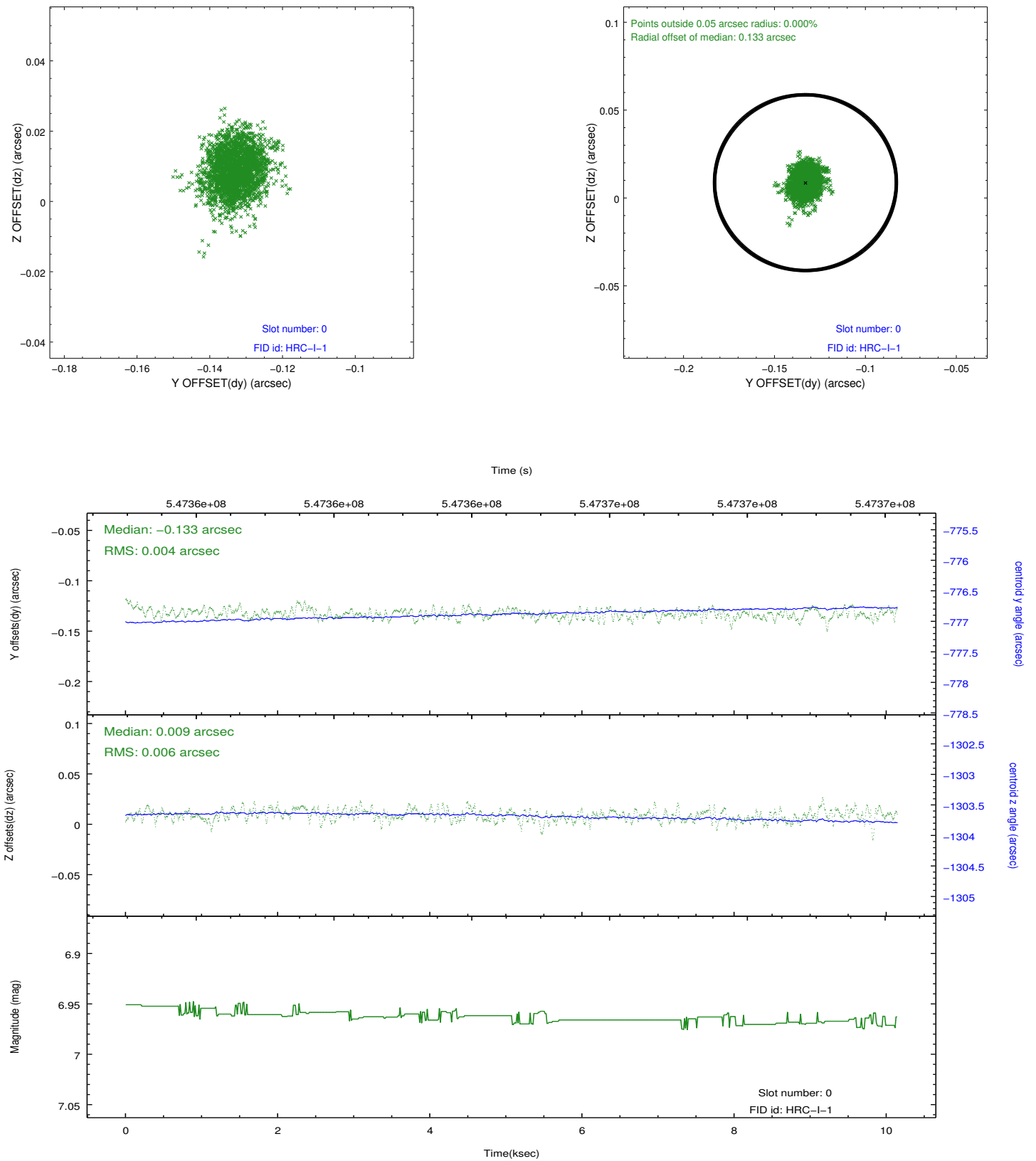


## 2.4.5 Slot 7

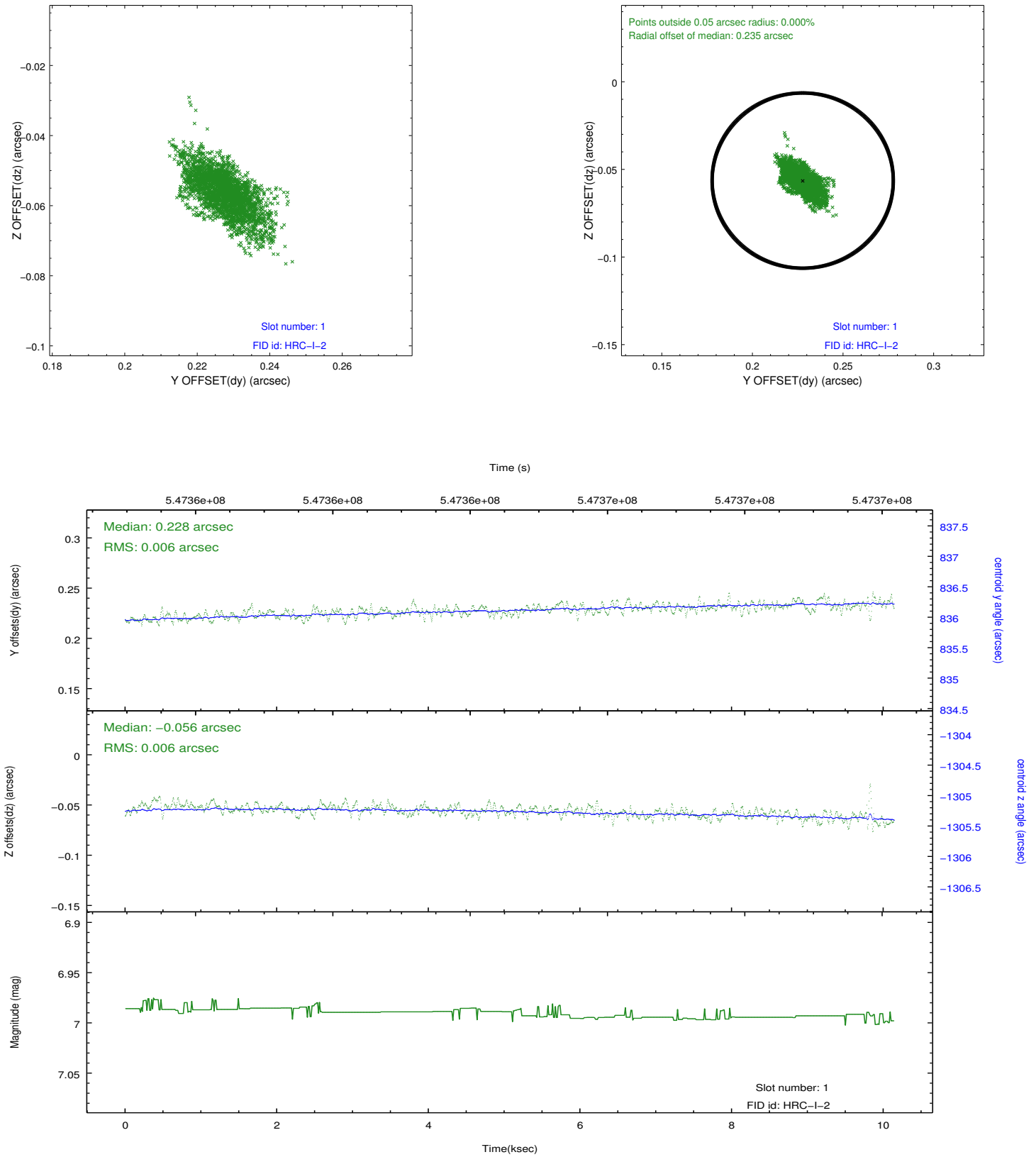


## 2.5 FID Slots

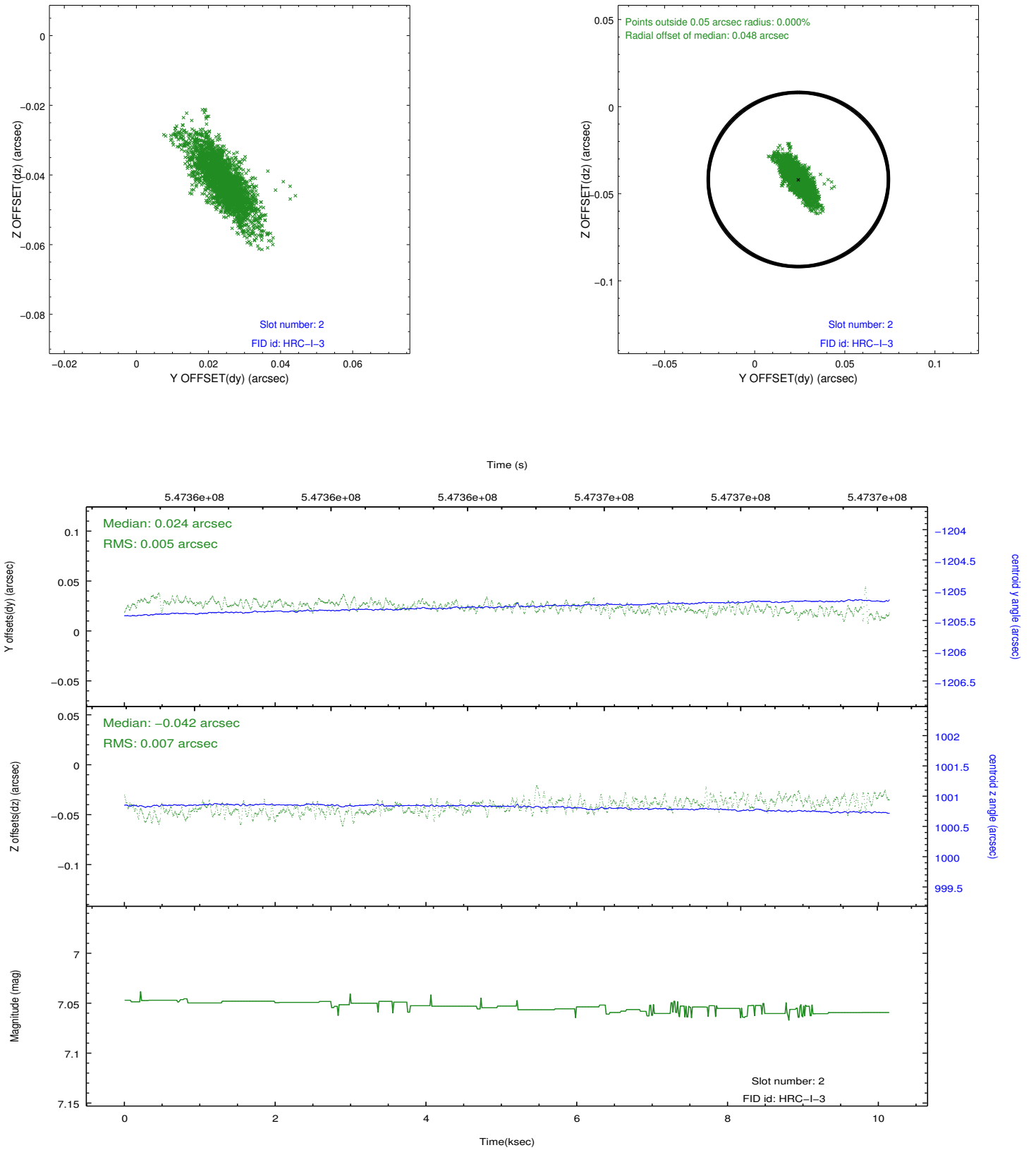
### 2.5.1 Slot 0



## 2.5.2 Slot 1



### 2.5.3 Slot 2



# A Summary

## A.1 Status

V&V Scientist	Beth Sundheim
V&V Date (YYYY-MM-DD)	2015.05.07
V&V Edition	1
V&V Disposition and Status	OK
V&V Charge Time	10.146731819034

## A.2 Comments

Joint proposal with HST.