

V&V Reference Report

L2 ASCDS Version : 10.4

Observation 16657 - L2 Version 1
Chandra X-Ray Center

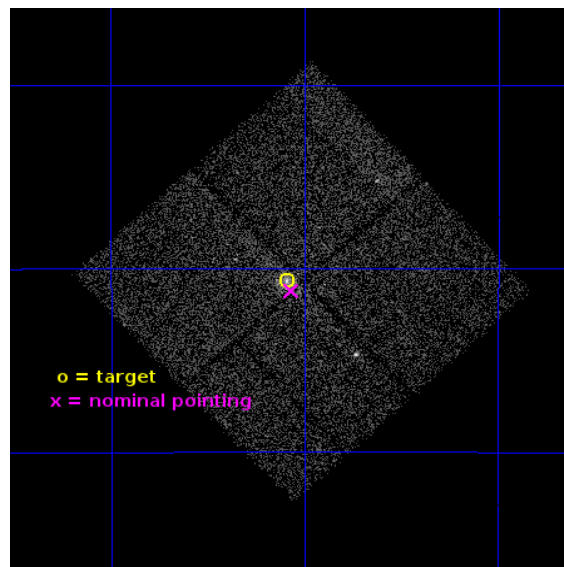
L2 Processing Date : Jun 14 2015

Contents

1	Front	2
2	OBI	3
2.1	OBI	3
2.1.1	Images	3
2.1.2	Bias	3
2.1.3	Parameters	4
2.1.4	Events	4
2.2	Compared Parameters	5
2.3	Aspect	6
2.4	Star Slots	9
2.4.1	Slot 3	9
2.4.2	Slot 4	10
2.4.3	Slot 5	11
2.4.4	Slot 6	12
2.4.5	Slot 7	13
2.5	FID Slots	14
2.5.1	Slot 0	14
2.5.2	Slot 1	15
2.5.3	Slot 2	16
A	Summary	17
A.1	Status	17
A.2	Comments	17

1 Front

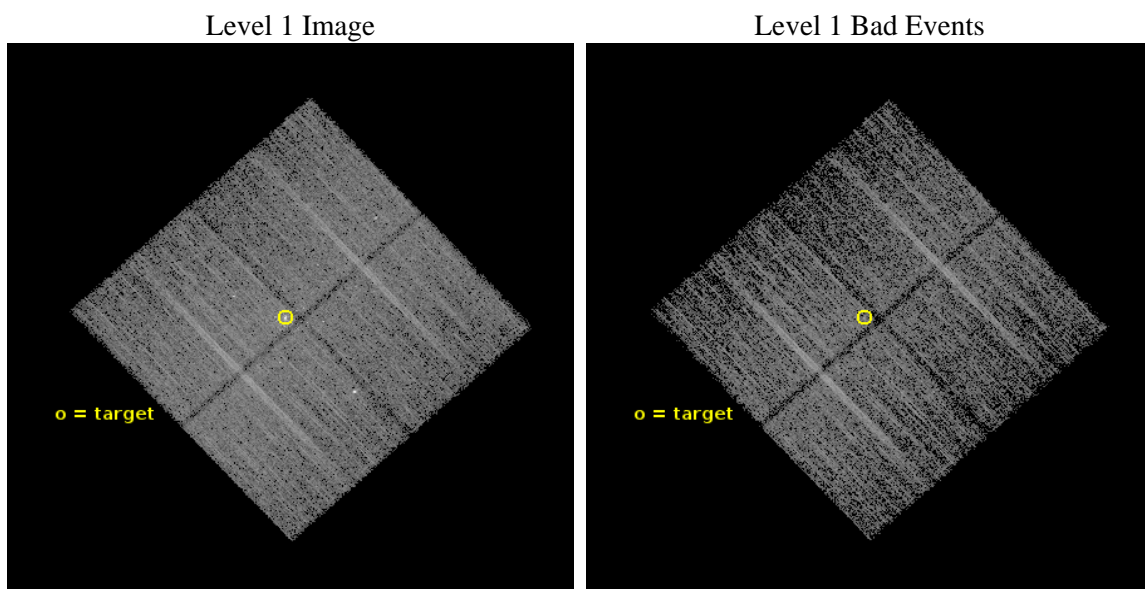
seq_num	200978	Sequence number
obs_id	16657	Observation id
title	RCW 38: A Unique Laboratory for the Formation and Dynamics of Young Star Clusters	Proposal title
observer	Prof. Eric Feigelson	Principal investigator
object	RCW 38	Source name
dtcycle	0	
cycle	P	events from which exps? Prim/Second/Both
ra_targ	134.772917	Observer's specified target RA [deg]
dec_targ	-47.511111	Observer's specified target Dec [deg]
ra_nom	134.7669770419	Nominal RA [deg]
dec_nom	-47.52025857748	Nominal Dec [deg]
roll_nom	227.20429821716	Nominal Roll [deg]
revision	1	Processing version of data
ontime	15046.887544274	Sum of GTIs [s]
livetime	14850.288881151	Livetime [s]
ontime0	15046.764424324	Sum of GTIs [s]
ontime1	15046.805464268	Sum of GTIs [s]
ontime2	15046.846504331	Sum of GTIs [s]
ontime3	15046.887544274	Sum of GTIs [s]
l2events	38476	Number of level 2 events



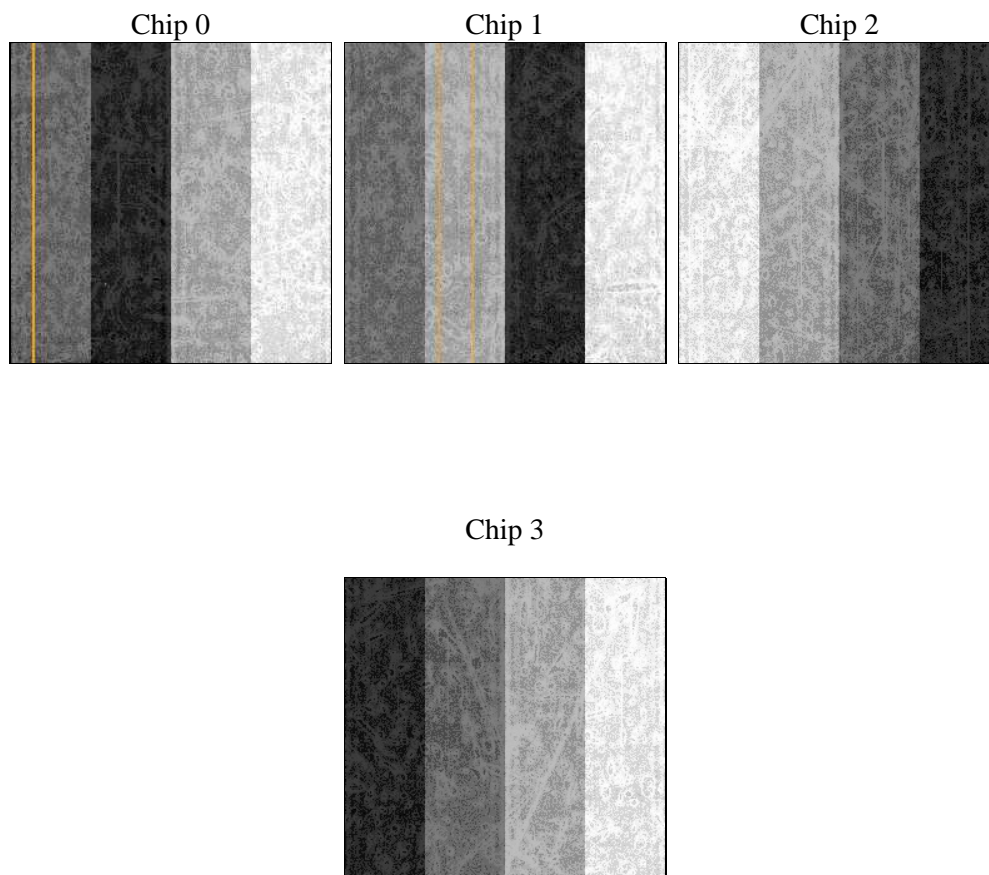
2 OBI

2.1 OBI

2.1.1 Images



2.1.2 Bias



2.1.3 Parameters

obi_num	2	Obi number	sched_exp_time	15255.864000	[s] Scheduled observation exposure time
ascdsver	10.4	Processing system revision	ontime	15046.887544274	Sum of GTIs [s]
caldsver	4.6.7	 	ontime0	15046.764424324	Sum of GTIs [s]
date	2015-06-14T12:04:49	Date and time of file creation	ontime1	15046.805464268	Sum of GTIs [s]
revision	1	Processing version of data	ontime2	15046.846504331	Sum of GTIs [s]
			ontime3	15046.887544274	Sum of GTIs [s]
			l1events	305094	Number of level 1 events

2.1.4 Events

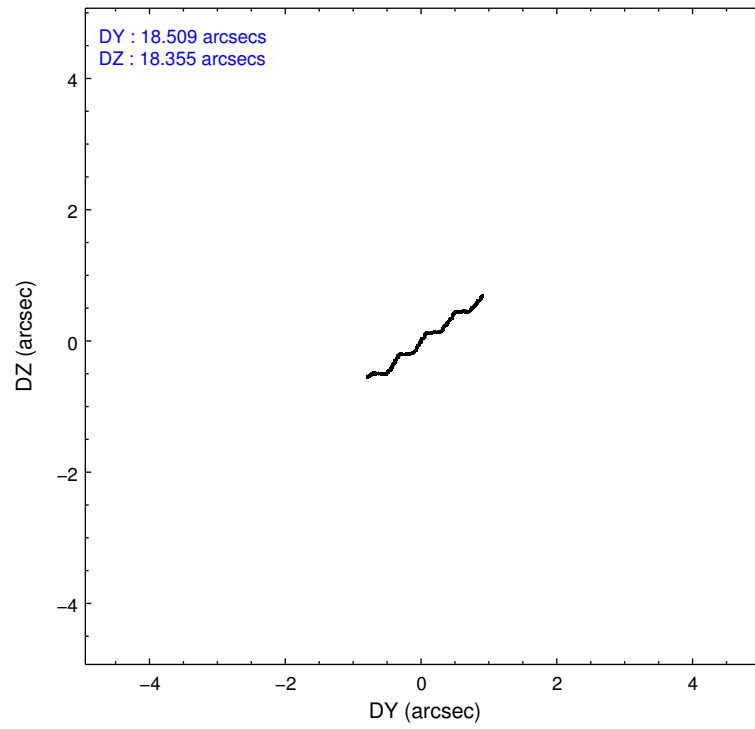
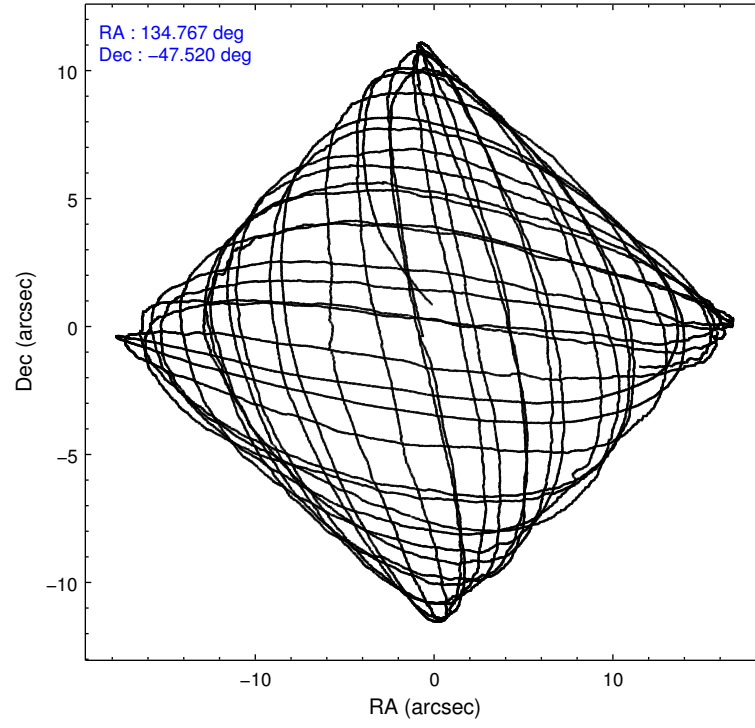
	ccd 0	ccd 1	ccd 2	ccd 3
level 1 events	69959	71077	81979	82079
rejected events	60352	59720	70951	69359
rejected %	86%	84%	86%	84%

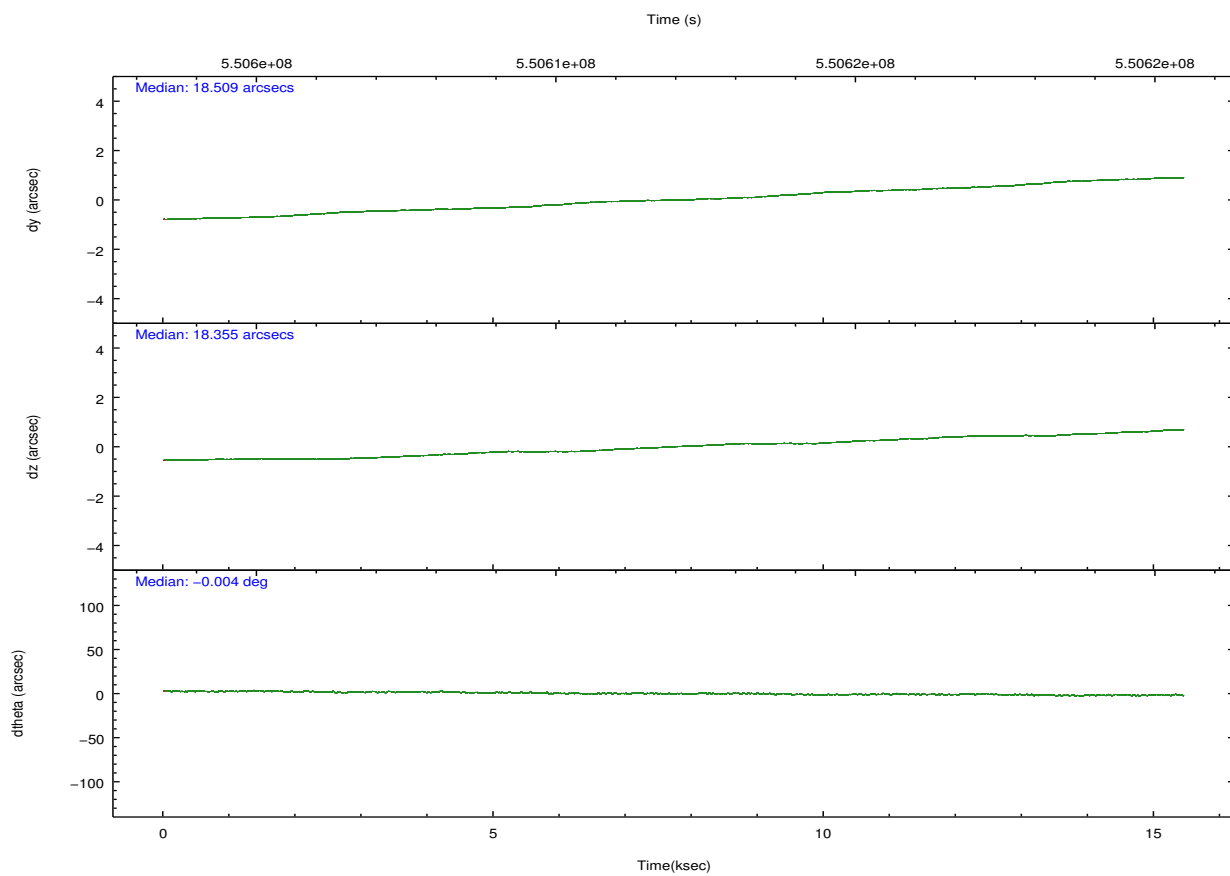
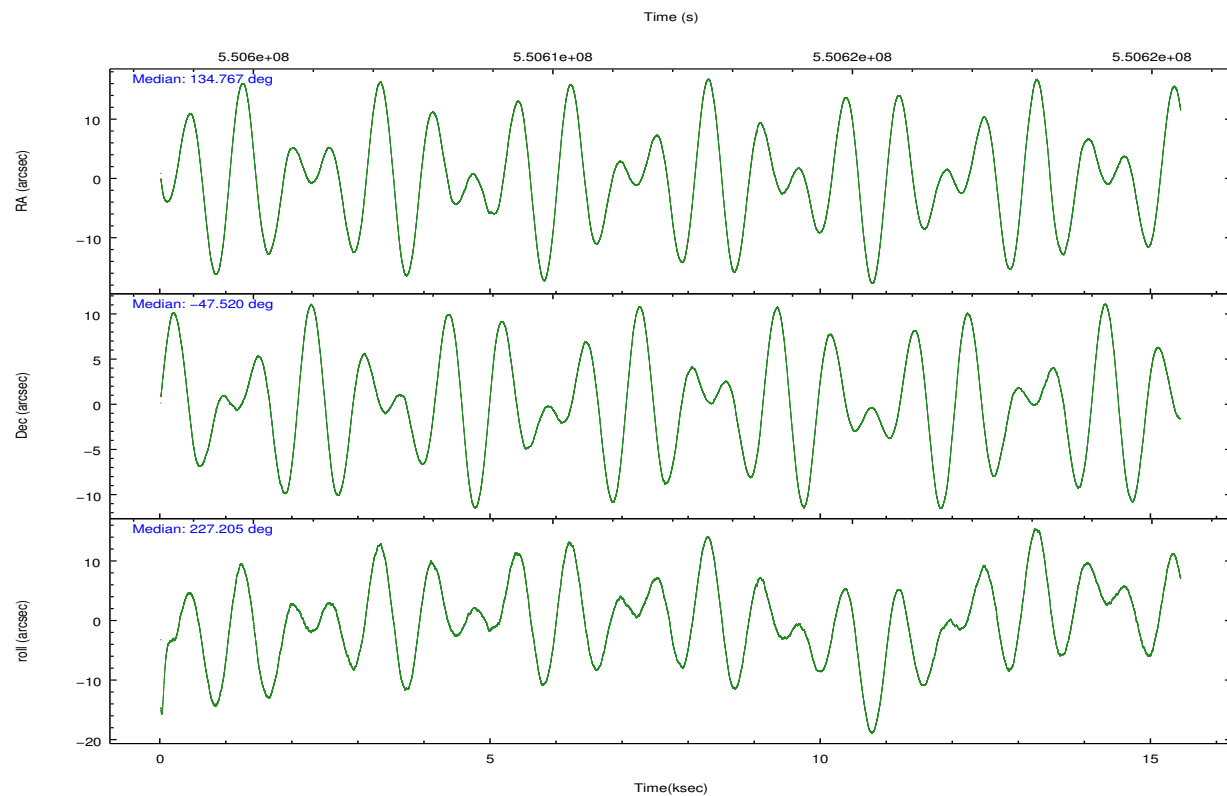
	ccd 0	ccd 1	ccd 2	ccd 3
grade 0 events	3593	4362	4689	6250
	5%	6%	5%	7%
grade 1 events	45	44	76	83
	0%	0%	0%	0%
grade 2 events	2273	2763	2452	2415
	3%	3%	2%	2%
grade 3 events	990	1013	964	1020
	1%	1%	1%	1%
grade 4 events	849	999	1031	1029
	1%	1%	1%	1%
grade 5 events	3699	3745	3350	4163
	5%	5%	4%	5%
grade 6 events	1905	2228	1894	2010
	2%	3%	2%	2%
grade 7 events	56605	55923	67523	65109
	80%	78%	82%	79%

2.2 Compared Parameters

Parameter	Planned	Actual	Parameter	Planned	Actual
Instrument	ACIS	ACIS	Obspar format version number	7	7
Detector	ACIS-0123	ACIS-0123	Obspar file type	PREDICTED	ACTUAL
Grating	NONE	NONE	Obspar update status	NONE	UPDATED
Data mode	VFAINT	VFAINT	Number of optional ACIS chips dropped	0	0
Observation mode	POINTING	POINTING	On-chip summing requested	N	N
[deg] Pointing RA	134.775830	134.7669770419021	Subarray requested	NONE	NONE
[deg] Pointing Dec	-47.493349	-47.52025857747951	Alternating exposures requested	N	N
[deg] Pointing Roll	227.002145	227.2042982171618	[s] Primary exposure time	0.000000	3.1
[mm] SIM focus pos	-0.782348	-0.7809083437167272			
[mm] SIM defocus	0	0.001439871863259334			
[mm] SIM translation stage pos	-233.592463	-233.5874344608287			
[mm] SIM translation stage offset	0	-0.005018542100998502			
[s] Observation start time (MET)	550604427.184000	550603699.91873			
Observation start date	2015-06-13T17:39:20	2015-06-13T17:28:19			
[s] Observation end time (MET)	550619683.184000	550619920.03214			
Observation end date	2015-06-13T21:53:36	2015-06-13T21:58:40			
Read mode	TIMED	TIMED			

2.3 Aspect



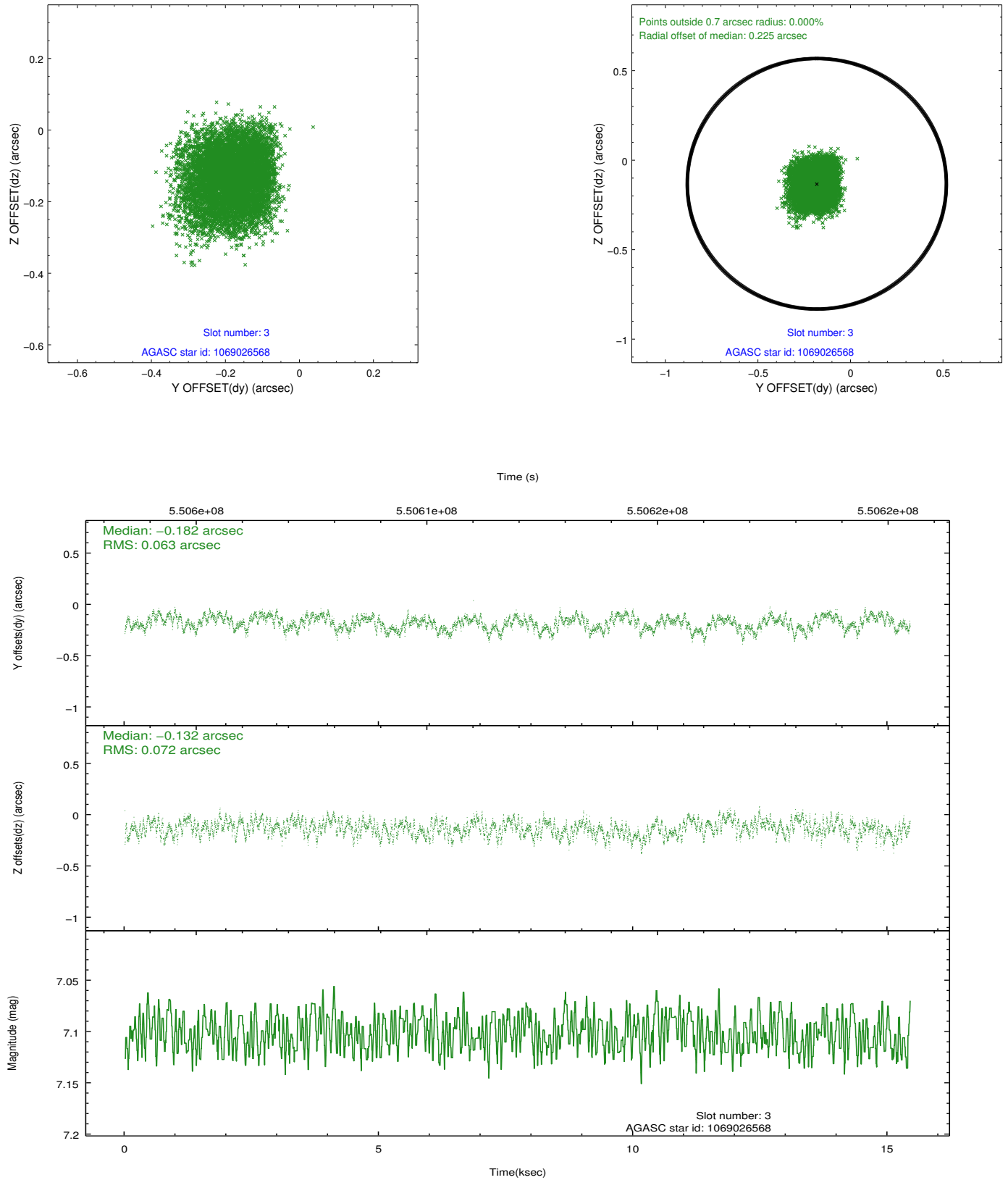


Slot Statistics

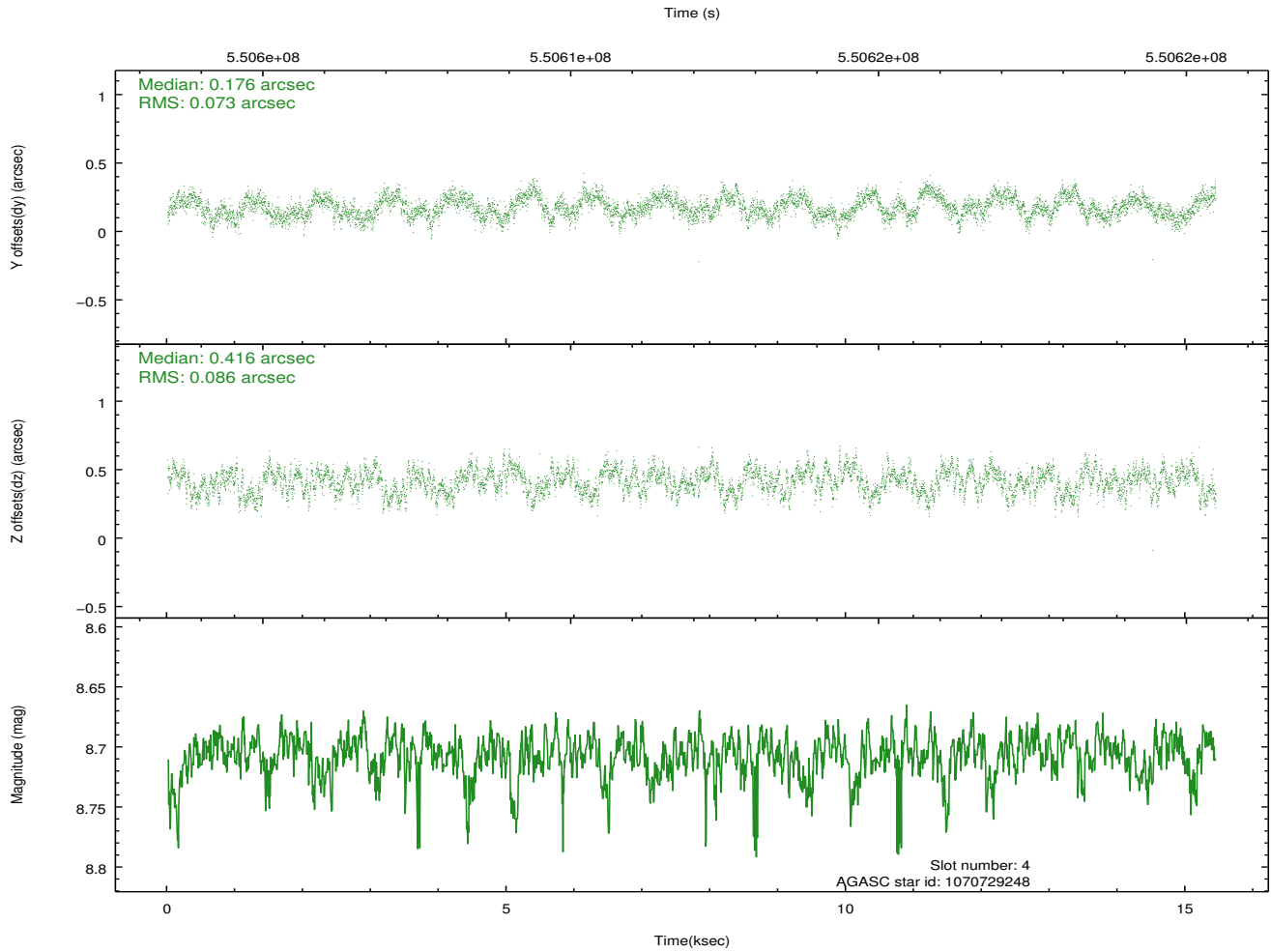
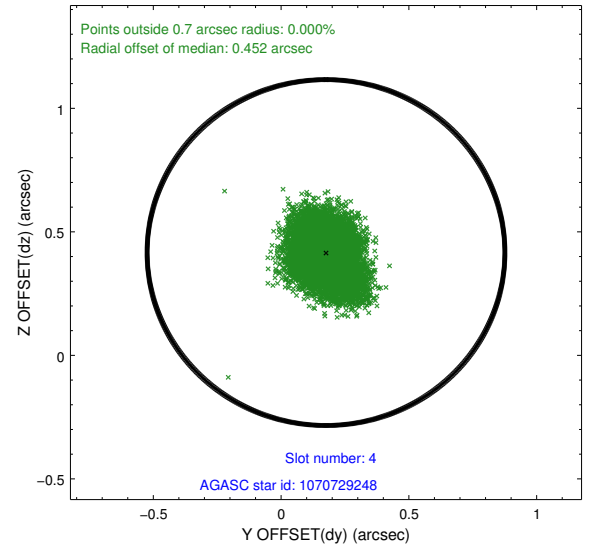
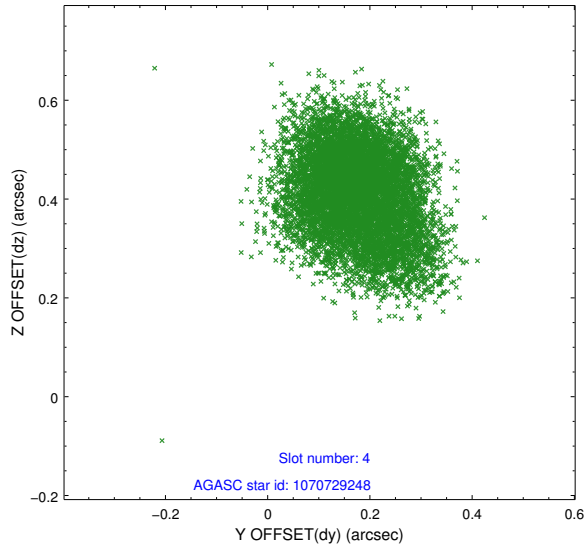
slot	status	used	id	mag	n_pts	med_dy	med_dz	dr1	dr2	ra	dec	mean_y	mean_z
0	FID		ACIS-I-1	7.10	3767	0.065	0.017	0.014	0.034	0.000000	0.000000	920.92	-842.00
1	FID		ACIS-I-5	7.09	3767	-0.321	0.048	0.010	0.016	0.000000	0.000000	-1827.47	1055.30
2	FID		ACIS-I-6	7.09	3767	0.164	0.008	0.013	0.022	0.000000	0.000000	386.17	1700.15
3	GUIDE	used	1069026568	7.10	7533	-0.182	-0.132	0.103	0.158	134.843519	-48.291320	1990.49	2078.17
4	GUIDE	used	1070729248	8.71	7530	0.176	0.416	0.121	0.192	135.048995	-47.118313	-1442.64	-429.95
5	GUIDE	used	1070729768	6.99	7533	-0.117	0.087	0.091	0.151	136.024083	-47.441445	-2191.73	2112.14
6	GUIDE	used	1070731648	8.04	7532	0.131	-0.065	0.080	0.133	135.285038	-47.251382	-1482.81	318.43
7	GUIDE	used	1070729592	7.34	7530	-0.008	-0.303	0.066	0.107	135.107946	-47.337671	-961.38	211.55

2.4 Star Slots

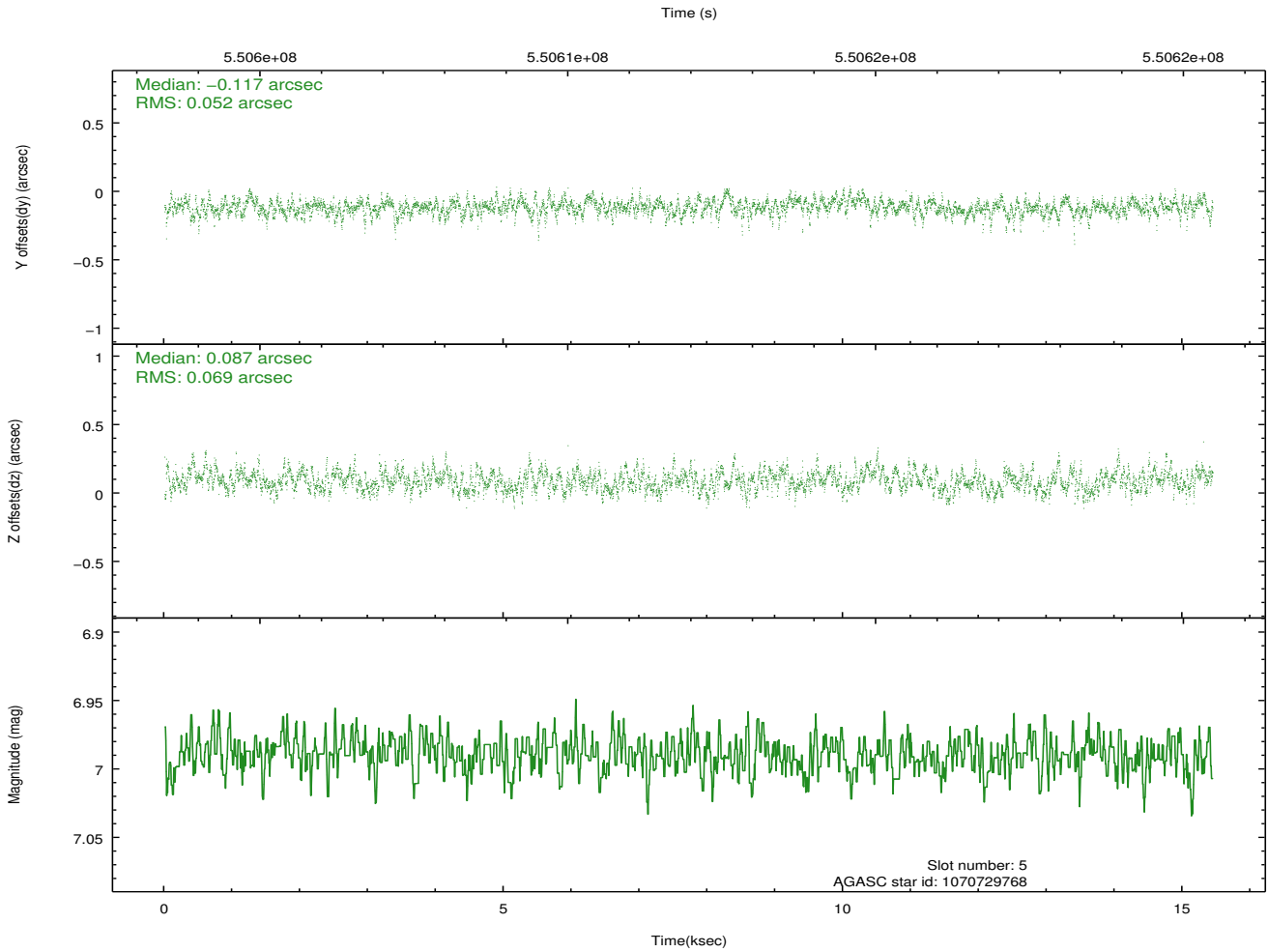
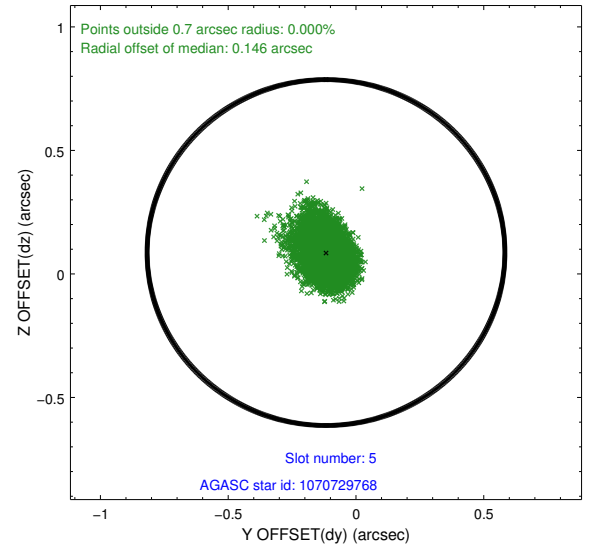
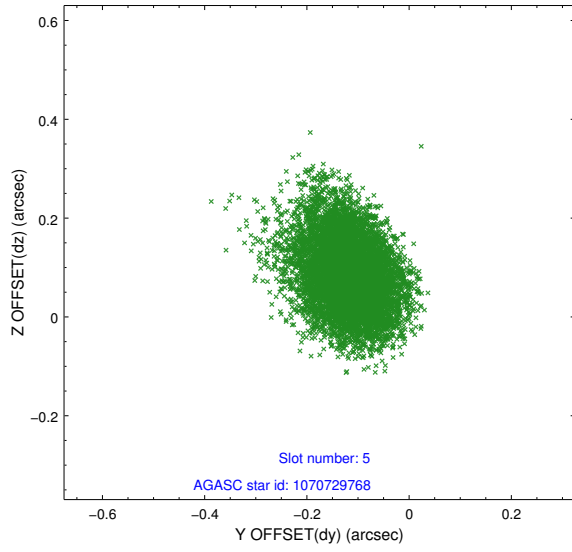
2.4.1 Slot 3



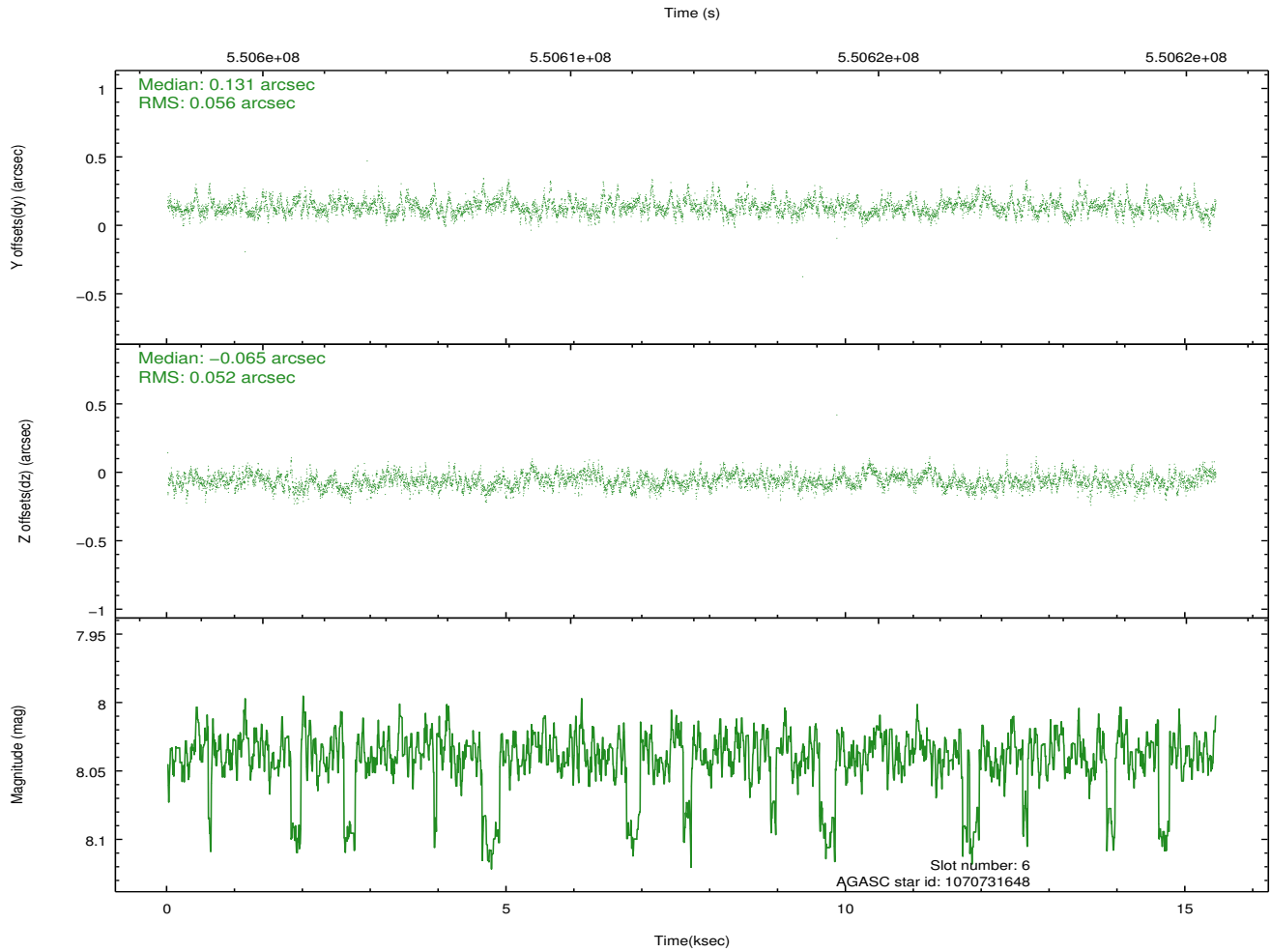
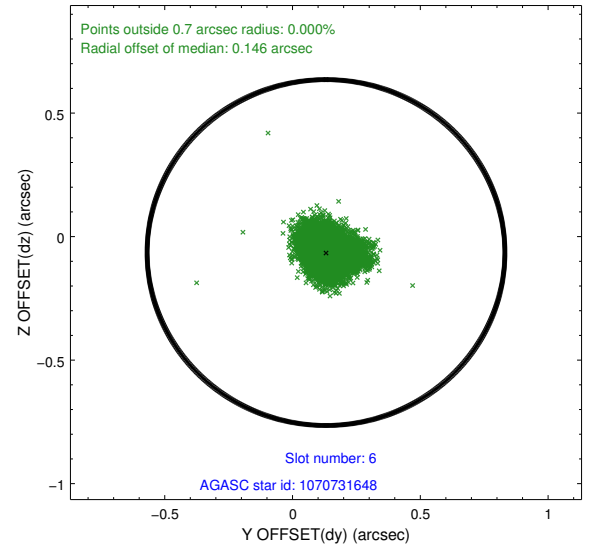
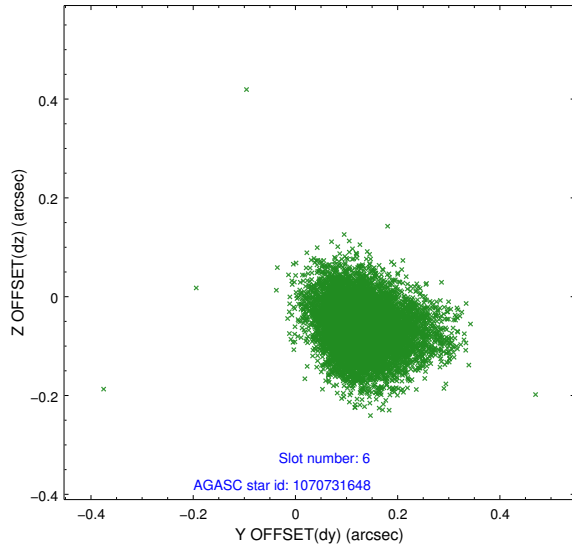
2.4.2 Slot 4



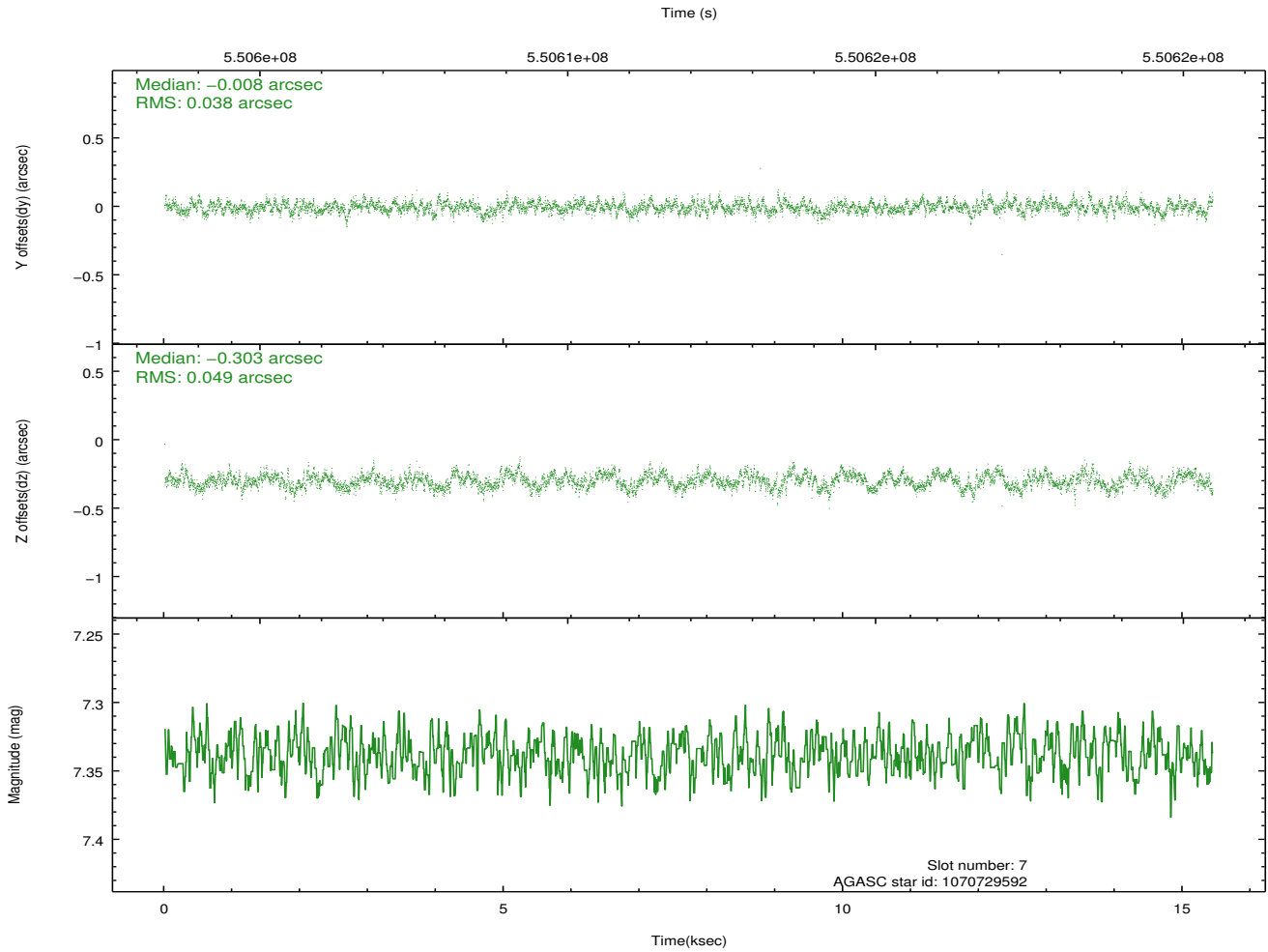
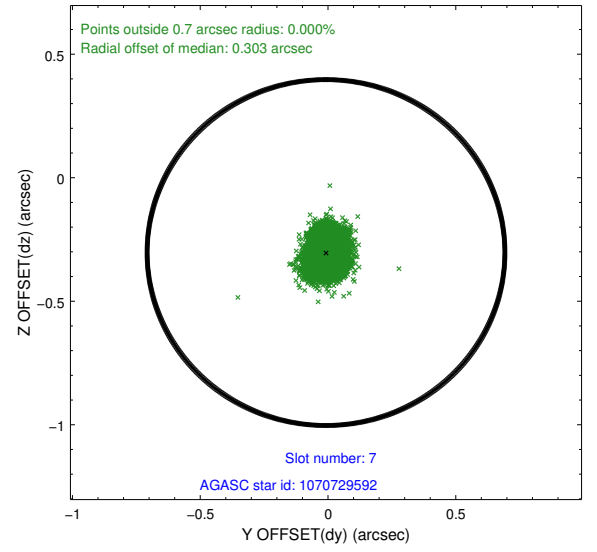
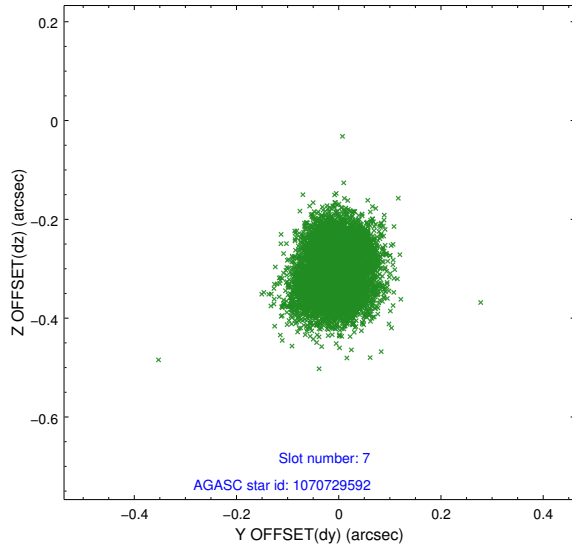
2.4.3 Slot 5



2.4.4 Slot 6

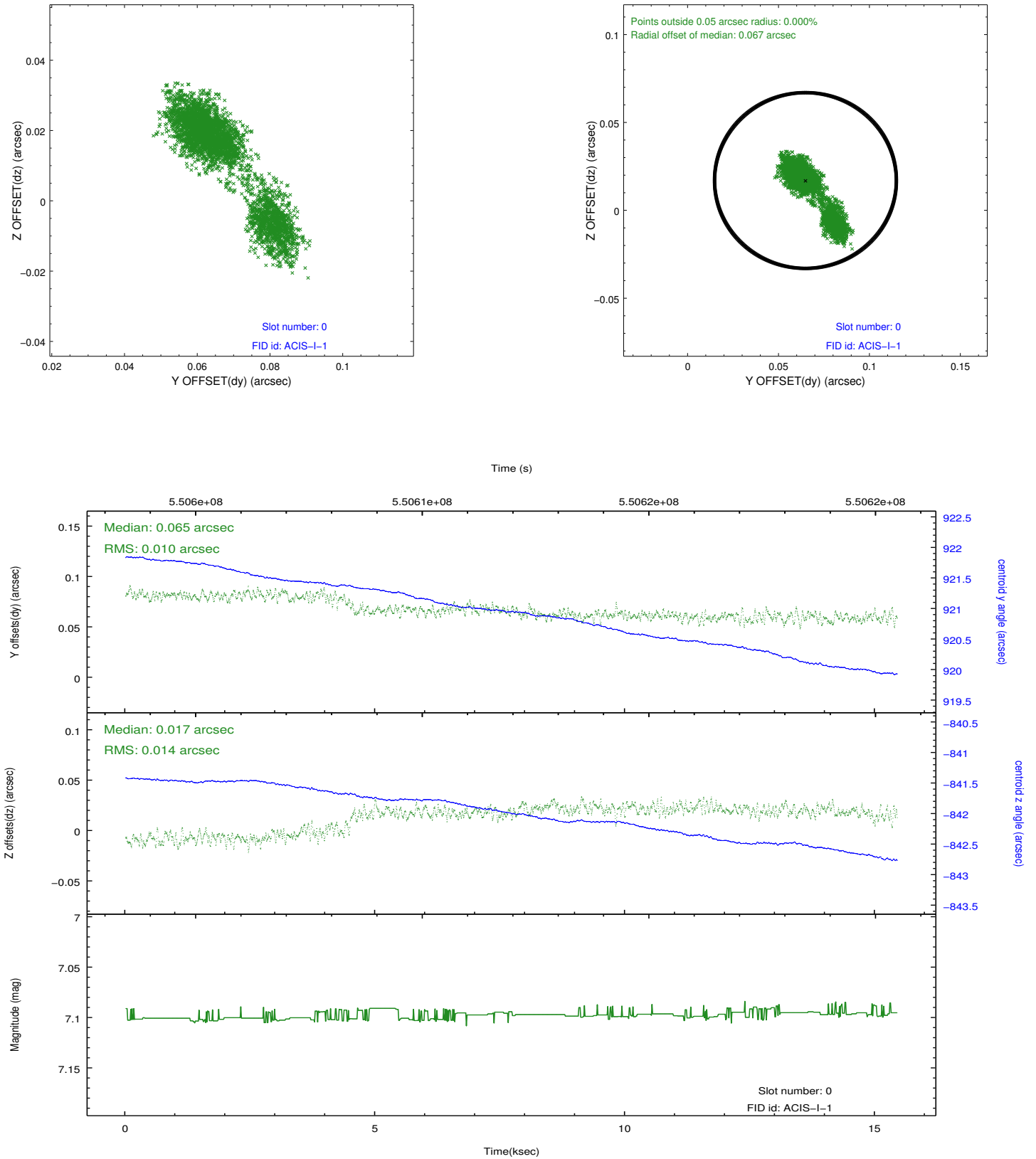


2.4.5 Slot 7

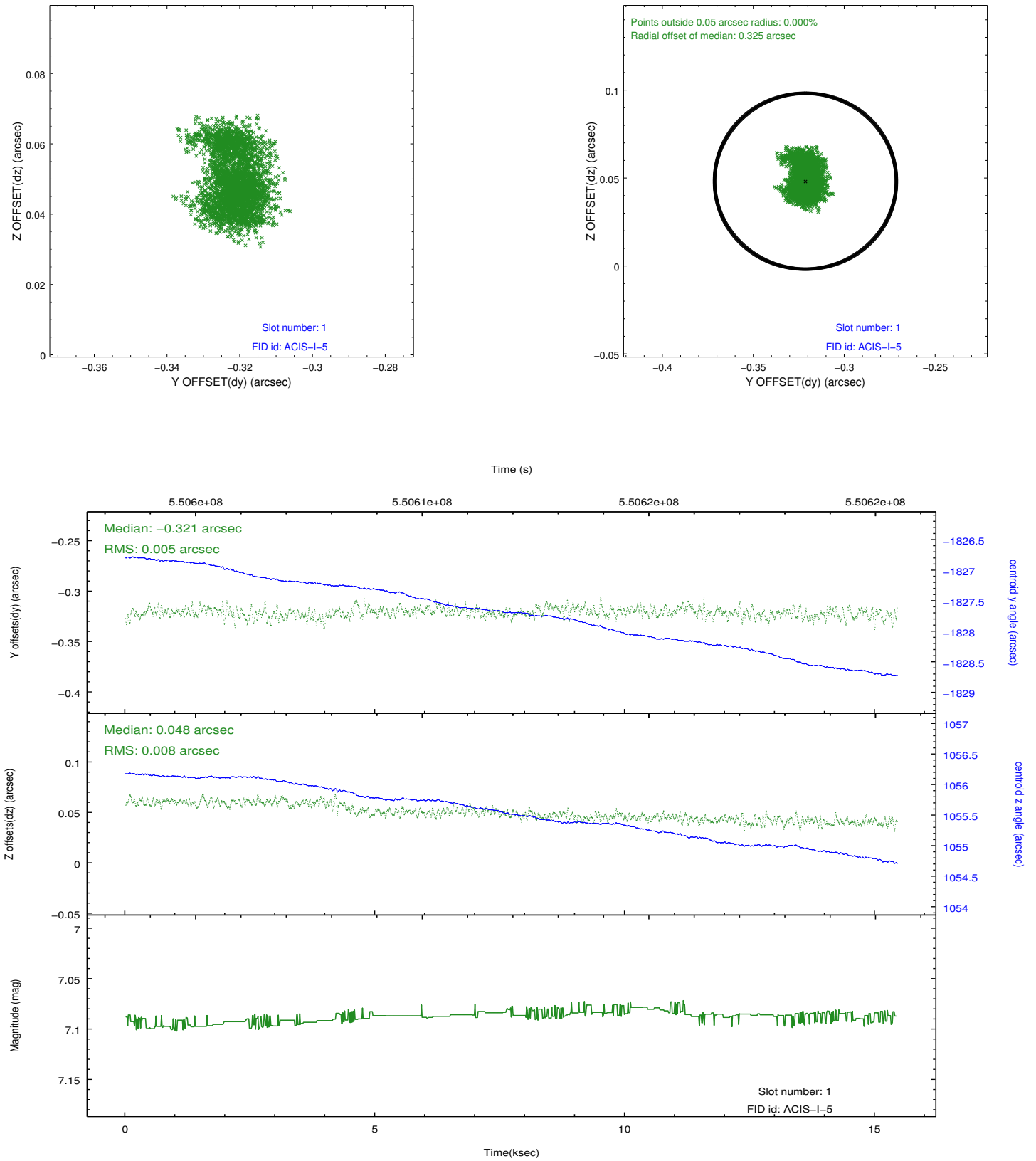


2.5 FID Slots

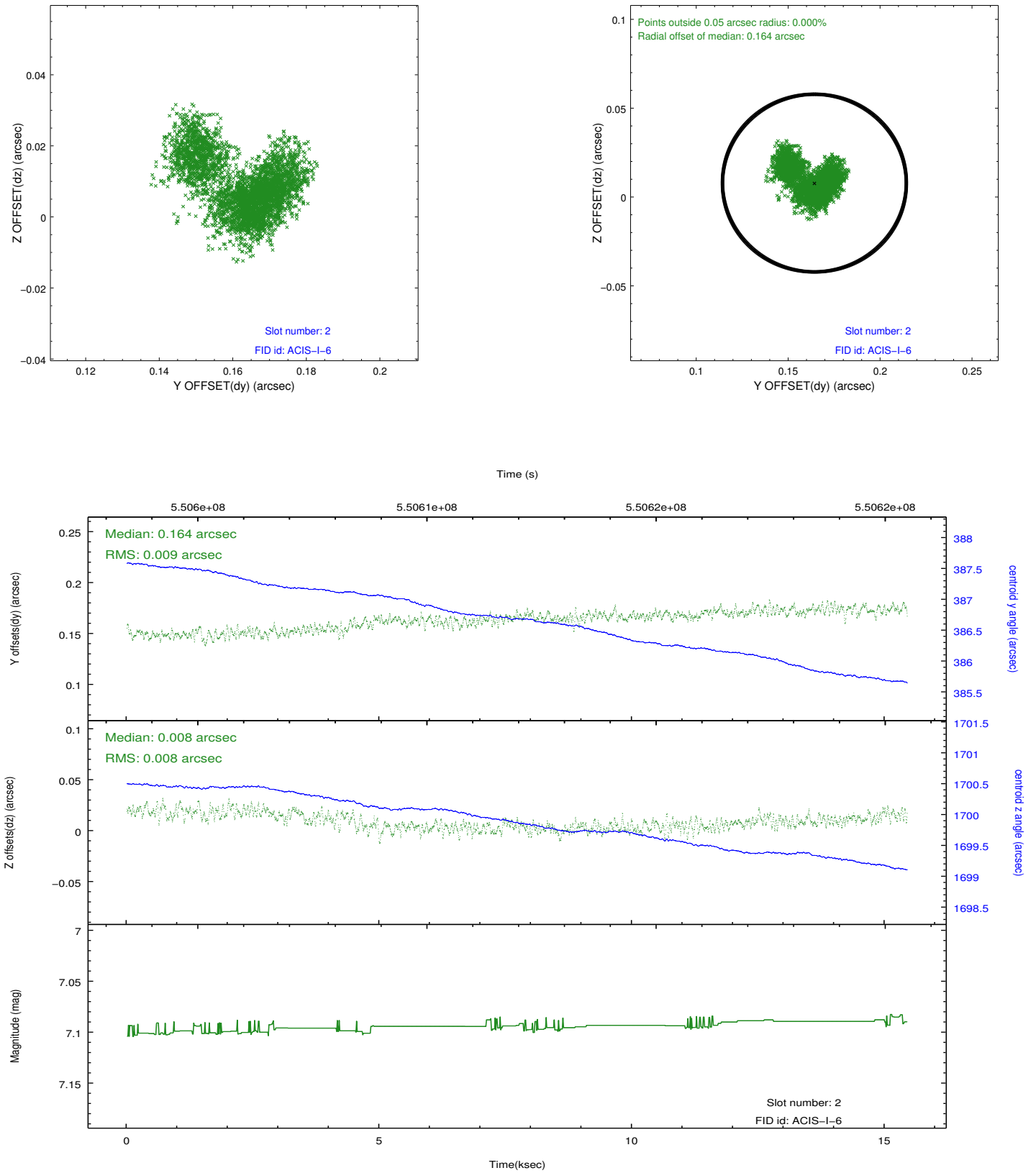
2.5.1 Slot 0



2.5.2 Slot 1



2.5.3 Slot 2



A Summary

A.1 Status

V&V Scientist	Jen Lauer
V&V Date (YYYY-MM-DD)	2015.06.14
V&V Edition	1
V&V Disposition and Status	OK
V&V Charge Time	15.046887544274

A.2 Comments