

V&V Reference Report

L2 ASCDS Version : 10.2.1

Observation 16287 - L2 Version 2
Chandra X-Ray Center

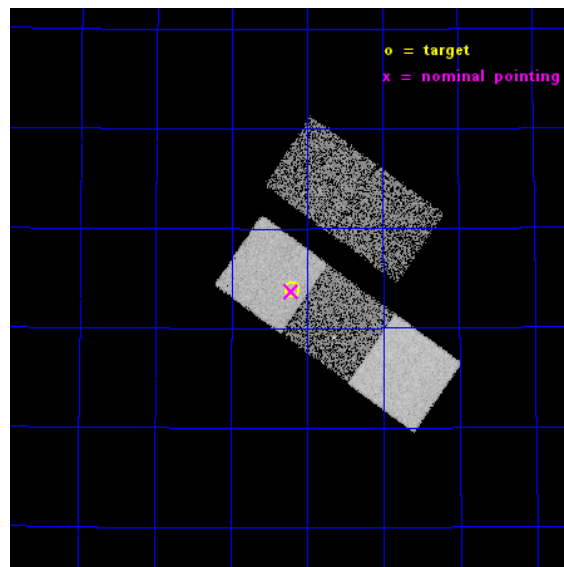
L2 Processing Date : Dec 9 2014

Contents

1	Front	2
2	OBI	3
2.1	OBI	3
2.1.1	Images	3
2.1.2	Bias	3
2.1.3	Parameters	4
2.1.4	Events	4
2.2	Compared Parameters	5
2.3	Aspect	6
2.4	Star Slots	9
2.4.1	Slot 3	9
2.4.2	Slot 4	10
2.4.3	Slot 5	11
2.4.4	Slot 6	12
2.4.5	Slot 7	13
2.5	FID Slots	14
2.5.1	Slot 0	14
2.5.2	Slot 1	15
2.5.3	Slot 2	16
A	Summary	17
A.1	Status	17
A.2	Comments	17

1 Front

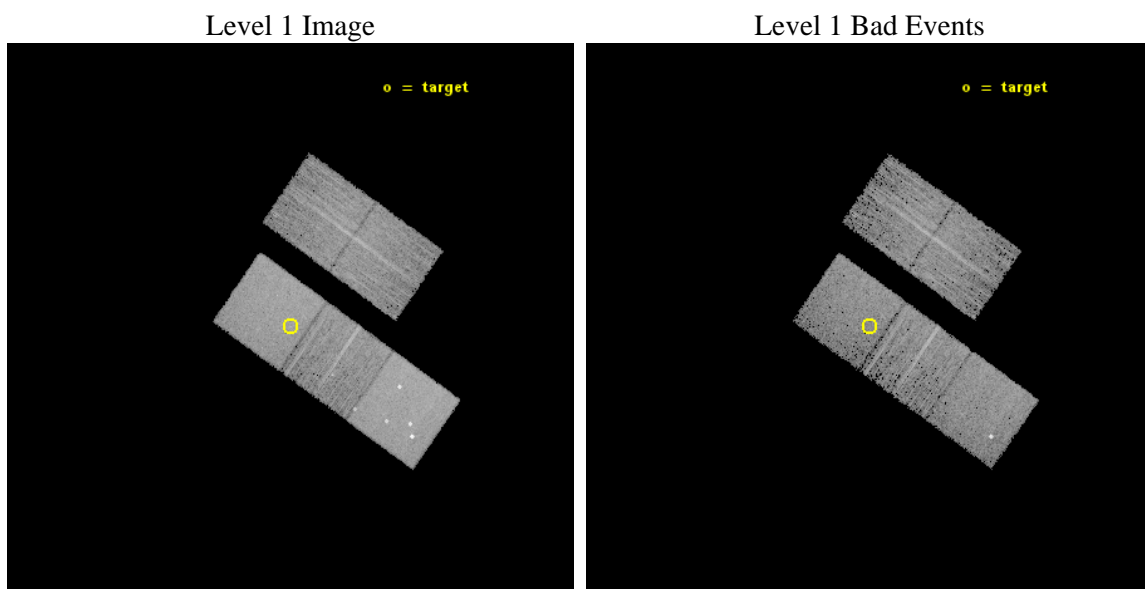
seq_num	901118	Sequence number
obs_id	16287	Observation id
title	Exploring low stellar mass galaxies in large dark matter halos	Pro
observer	Dr Stephen Murray	Principal investigator
object	UGC03816	Source name
dtcycle	0	
cycle	P	events from which exps? Prim/Second/Both
ra_targ	110.801667	Observer's specified target RA [deg]
dec_targ	58.064778	Observer's specified target Dec [deg]
ra_nom	110.80196099352	Nominal RA [deg]
dec_nom	58.061782615289	Nominal Dec [deg]
roll_nom	215.31524530334	Nominal Roll [deg]
revision	2	Processing version of data
ontime	10068.800077438	Sum of GTIs [s]
livetime	9937.2437918838	Livetime [s]
ontime2	10068.800077438	Sum of GTIs [s]
ontime3	10068.800077438	Sum of GTIs [s]
ontime5	10068.800077438	Sum of GTIs [s]
ontime6	10068.800077438	Sum of GTIs [s]
ontime7	10068.800077438	Sum of GTIs [s]
l2events	80570	Number of level 2 events



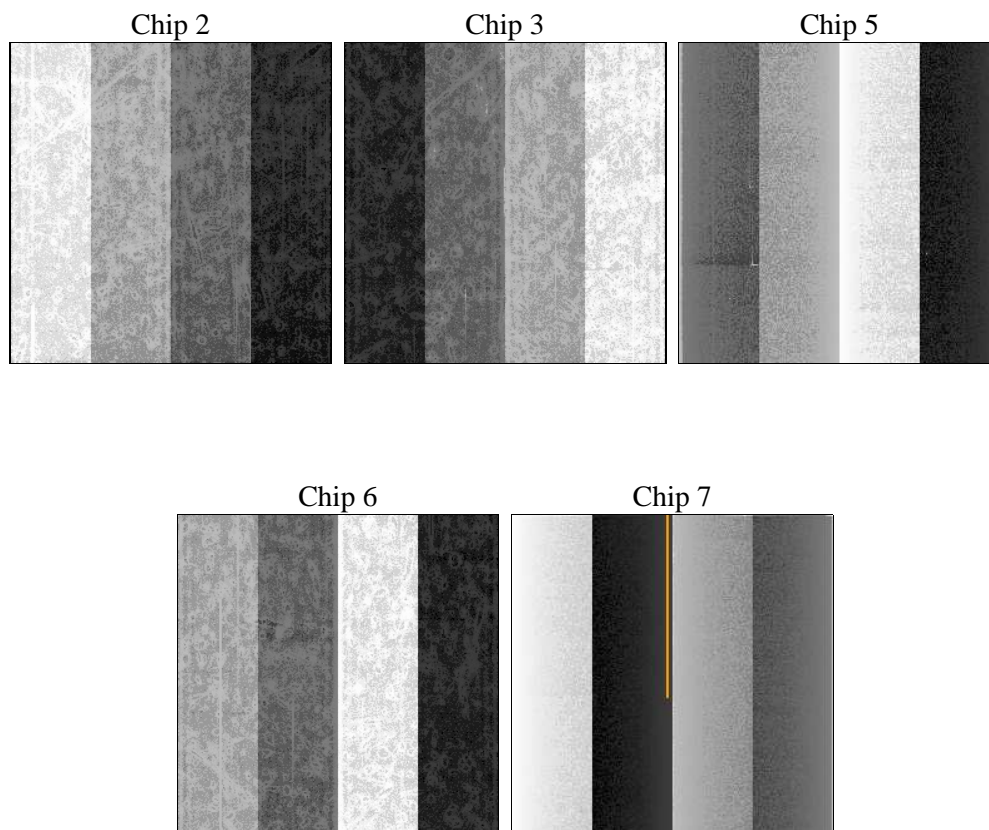
2 OBI

2.1 OBI

2.1.1 Images



2.1.2 Bias



2.1.3 Parameters

obi_num	0	Obi number	sched_exp_time	10000.000000	[s] Scheduled observation exposure time
ascdsver	10.3.1	Processing system revision	ontime	10068.800077438	Sum of GTIs [s]
caldsver	4.6.4	 	ontime2	10068.800077438	Sum of GTIs [s]
date	2014-12-10T03:31:50	Date and time of file creation	ontime3	10068.800077438	Sum of GTIs [s]
revision	2	Processing version of data	ontime5	10068.800077438	Sum of GTIs [s]
			ontime6	10068.800077438	Sum of GTIs [s]
			ontime7	10068.800077438	Sum of GTIs [s]
			l1events	294316	Number of level 1 events

2.1.4 Events

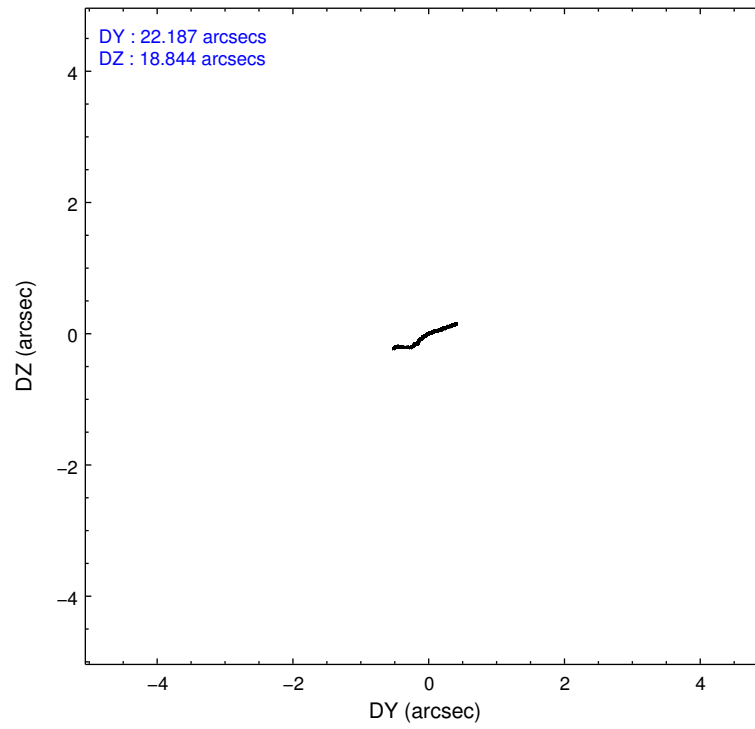
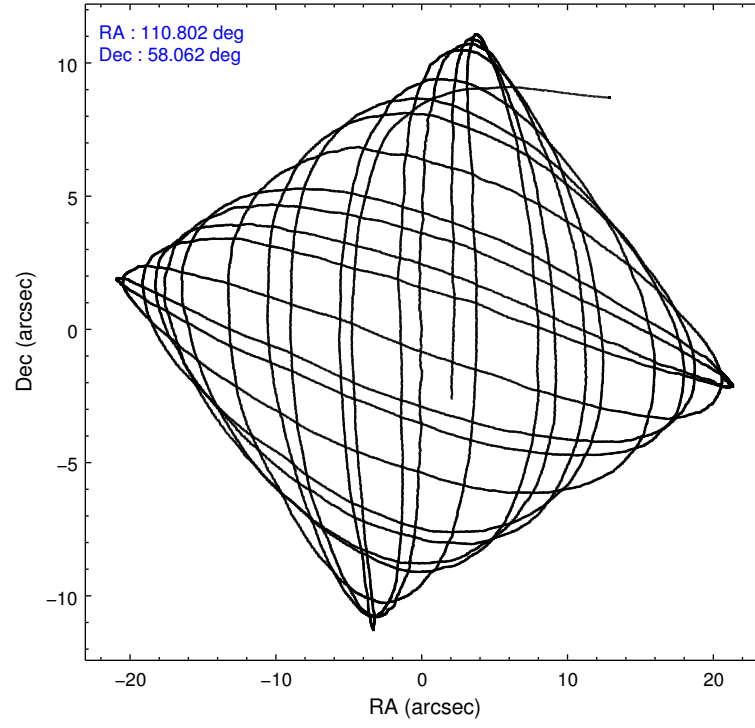
	ccd 2	ccd 3	ccd 5	ccd 6	ccd 7
level 1 events	46142	45373	87096	48053	67652
rejected events	40541	39927	43970	41901	38114
rejected %	87%	87%	50%	87%	56%

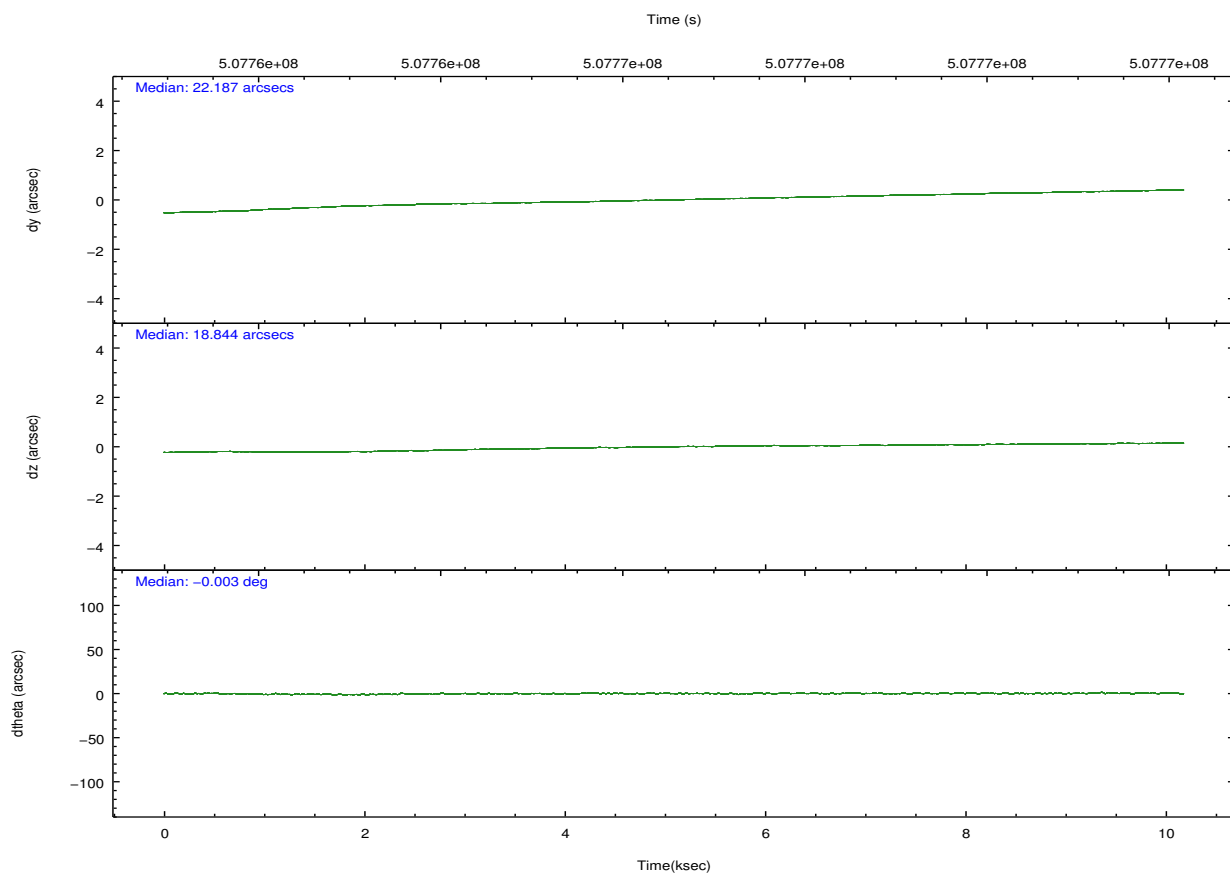
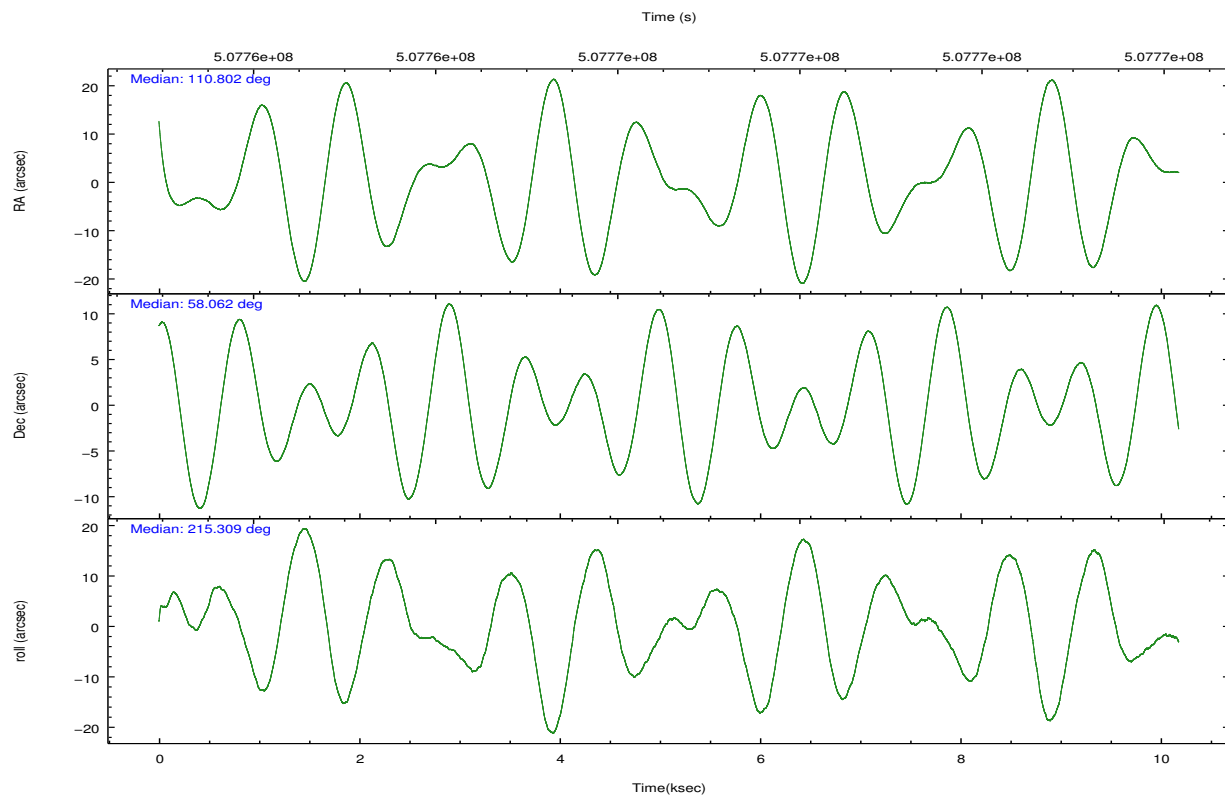
	ccd 2	ccd 3	ccd 5	ccd 6	ccd 7
grade 0 events	1948	1872	6477	2143	2659
	4%	4%	7%	4%	3%
grade 1 events	30	34	162	26	71
	0%	0%	0%	0%	0%
grade 2 events	1359	1213	12920	1390	6143
	2%	2%	14%	2%	9%
grade 3 events	587	597	1404	631	2528
	1%	1%	1%	1%	3%
grade 4 events	564	611	1272	608	2482
	1%	1%	1%	1%	3%
grade 5 events	2195	2652	6016	2546	6959
	4%	5%	6%	5%	10%
grade 6 events	1146	1156	21067	1383	15738
	2%	2%	24%	2%	23%
grade 7 events	38313	37238	37778	39326	31072
	83%	82%	43%	81%	45%

2.2 Compared Parameters

Parameter	Planned	Actual	Parameter	Planned	Actual
Instrument	ACIS	ACIS	Obspar format version number	7	7
Detector	ACIS-23567	ACIS-23567	Obspar file type	PREDICTED	ACTUAL
Grating	NONE	NONE	Obspar update status	NONE	UPDATED
Data mode	VFAINT	VFAINT	Number of optional ACIS chips dropped	0	0
Observation mode	POINTING	POINTING	On-chip summing requested	N	N
[deg] Pointing RA	110.822902	110.8019609935167	Subarray requested	NONE	NONE
[deg] Pointing Dec	58.086754	58.06178261528886	Alternating exposures requested	N	N
[deg] Pointing Roll	215.140827	215.315245303336	[s] Primary exposure time	0.000000	3.1
[mm] SIM focus pos	-0.684267	-0.6828225247311905			
[mm] SIM defocus	0	0.001444936568705701			
[mm] SIM translation stage pos	-190.132523	-190.1425803651734			
[mm] SIM translation stage offset	0	0.01005778216563158			
[s] Observation start time (MET)	507761646.184000	507760107.42507			
Observation start date	2014-02-02T20:52:59	2014-02-02T20:28:27			
[s] Observation end time (MET)	507771646.184000	507772190.63824			
Observation end date	2014-02-02T23:39:39	2014-02-02T23:49:50			
Read mode	TIMED	TIMED			

2.3 Aspect



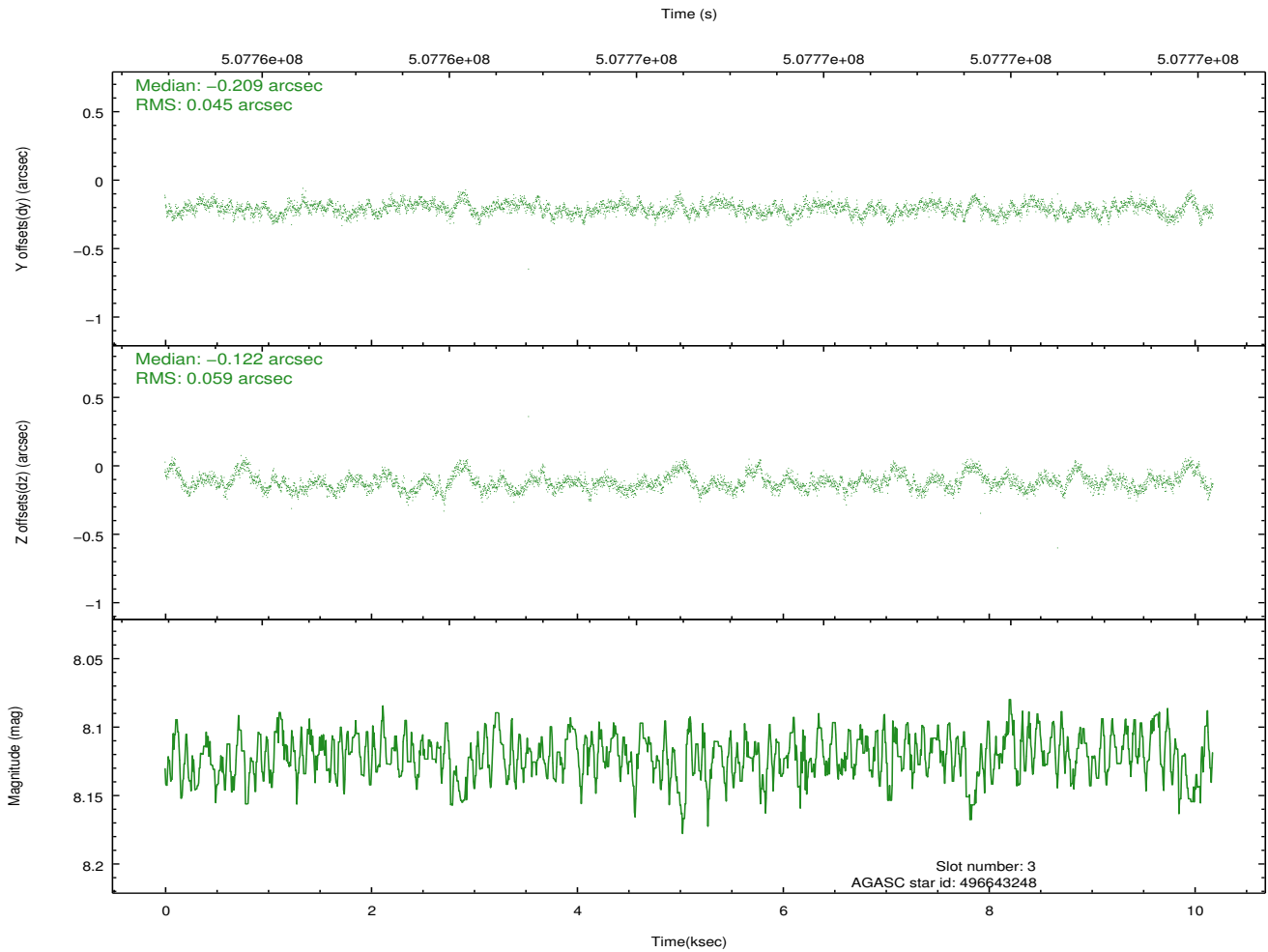
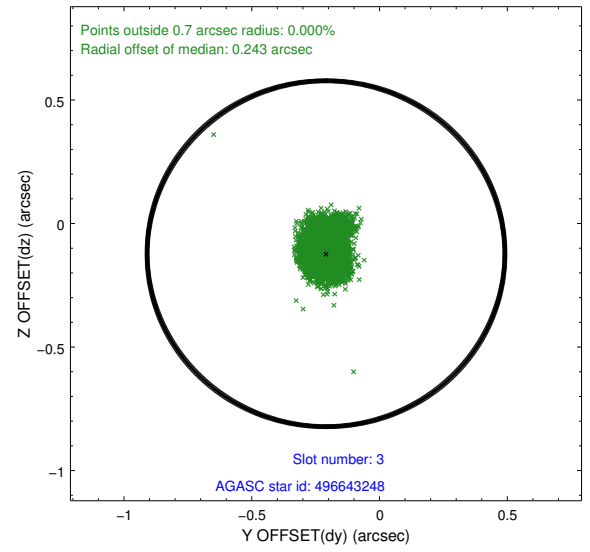
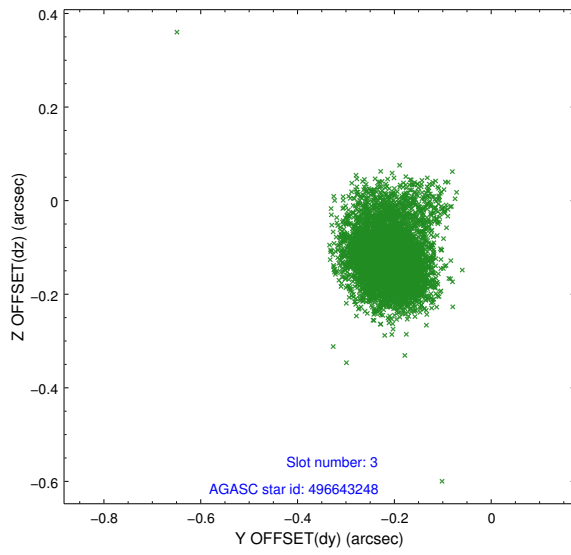


Slot Statistics

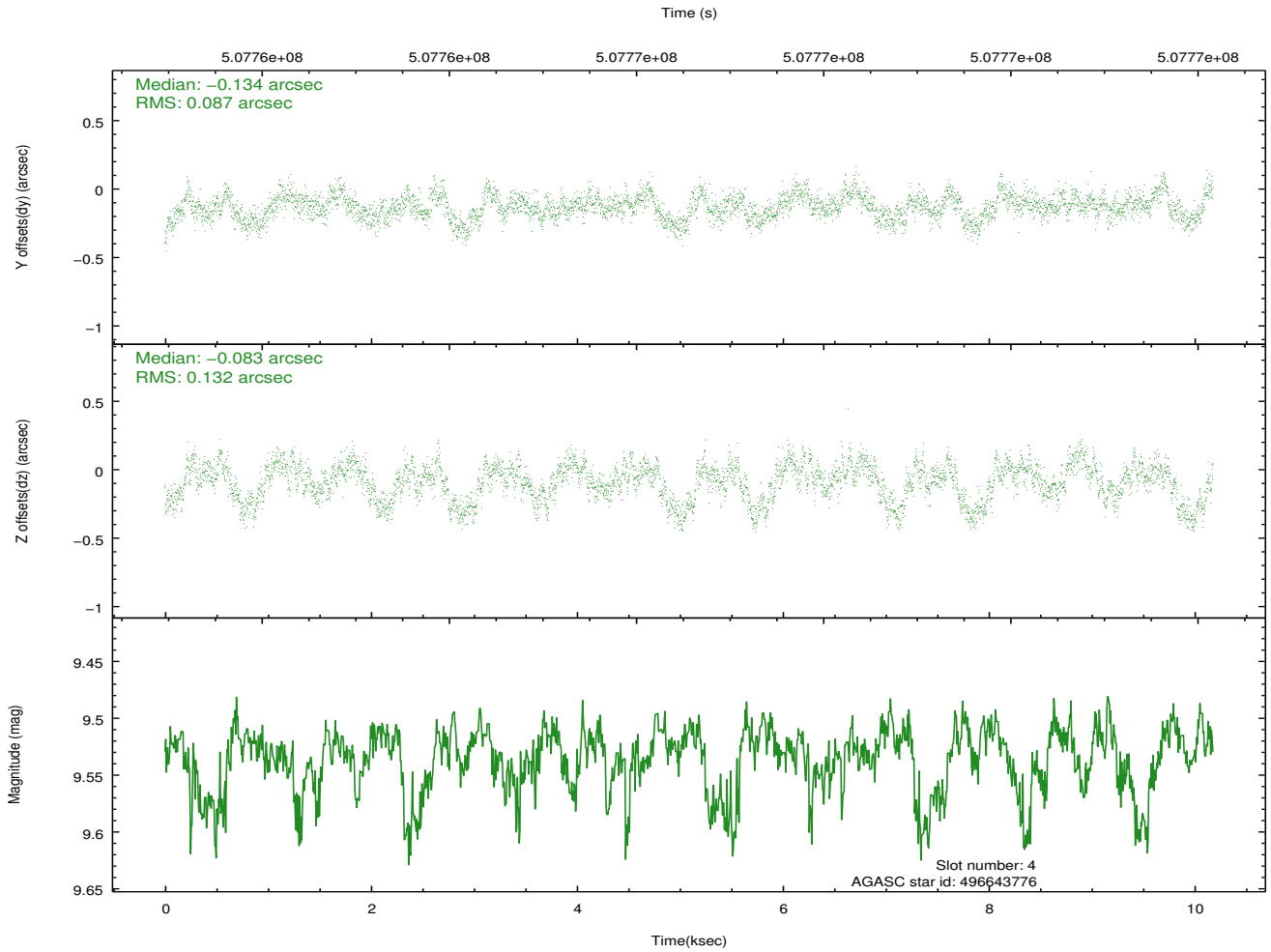
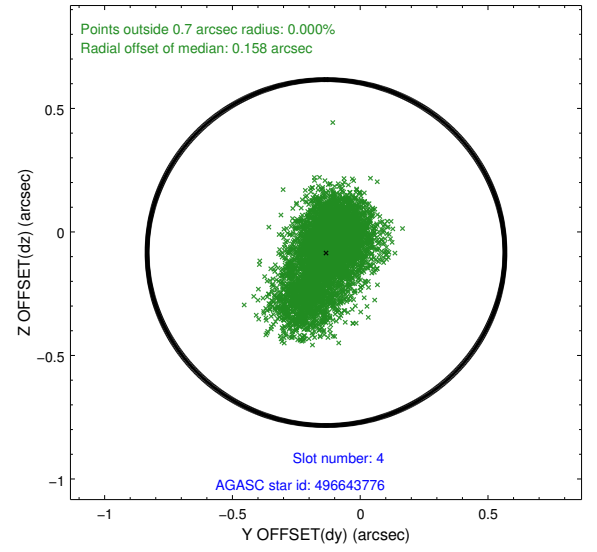
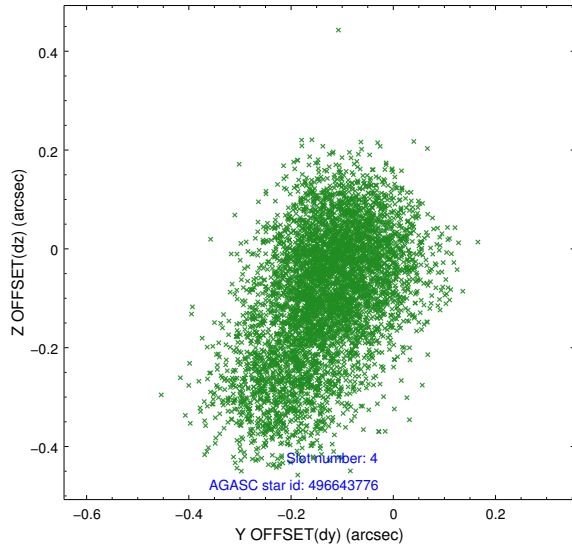
slot	status	used	id	mag	n_pts	med_dy	med_dz	dr1	dr2	ra	dec	mean_y	mean_z
0	FID		ACIS-S-2	6.96	2483	-0.149	-0.083	0.014	0.021	0.000000	0.000000	-775.53	-1740.31
1	FID		ACIS-S-4	7.05	2483	0.195	0.080	0.012	0.018	0.000000	0.000000	2137.89	167.73
2	FID		ACIS-S-6	7.18	2483	-0.074	0.010	0.008	0.012	0.000000	0.000000	387.24	805.69
3	GUIDE	used	496643248	8.12	4966	-0.209	-0.122	0.077	0.131	110.920928	57.577203	901.43	1609.49
4	GUIDE	used	496643776	9.53	4960	-0.134	-0.083	0.168	0.282	111.082220	57.466546	874.04	2114.68
5	GUIDE	used	497170216	9.61	4961	0.231	-0.030	0.141	0.227	111.623561	58.338341	-1763.10	123.38
6	GUIDE	used	497170448	8.89	4899	0.071	0.310	0.080	0.131	111.293308	58.320261	-1213.09	-177.43
7	GUIDE	used	496519720	7.82	4966	0.040	-0.065	0.087	0.140	109.333947	58.049364	2379.69	-1547.26

2.4 Star Slots

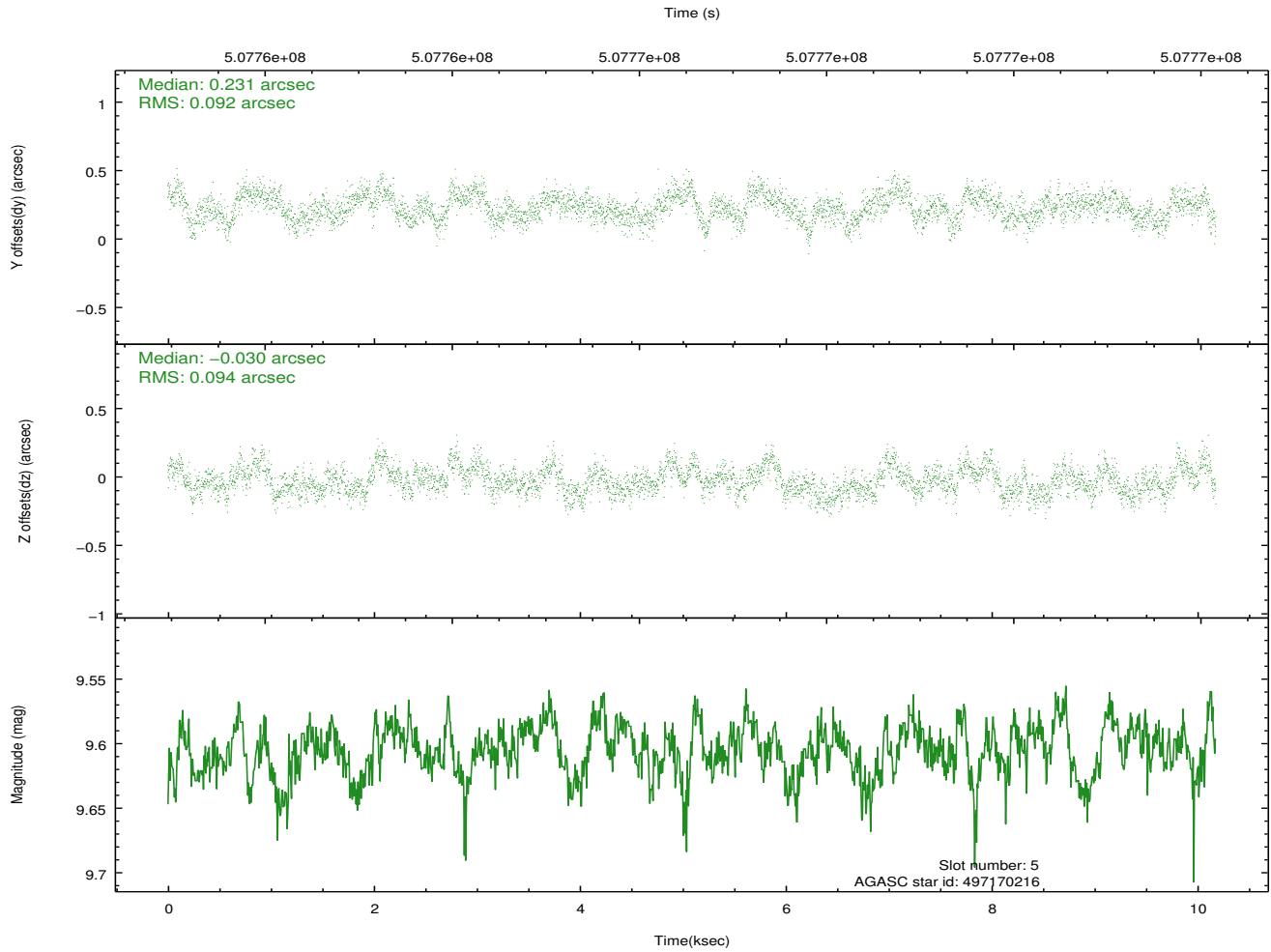
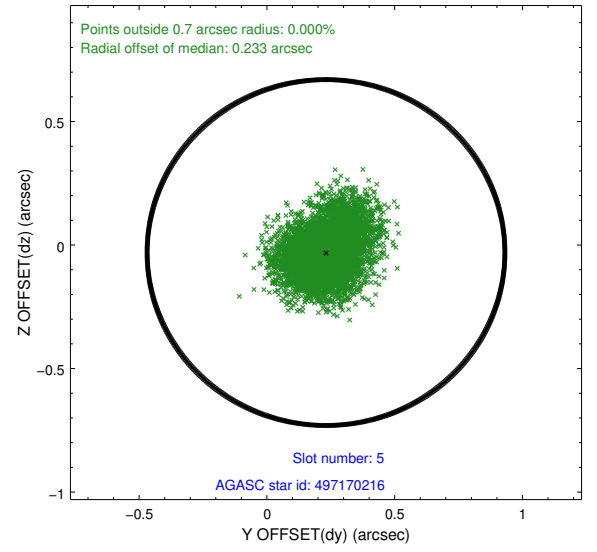
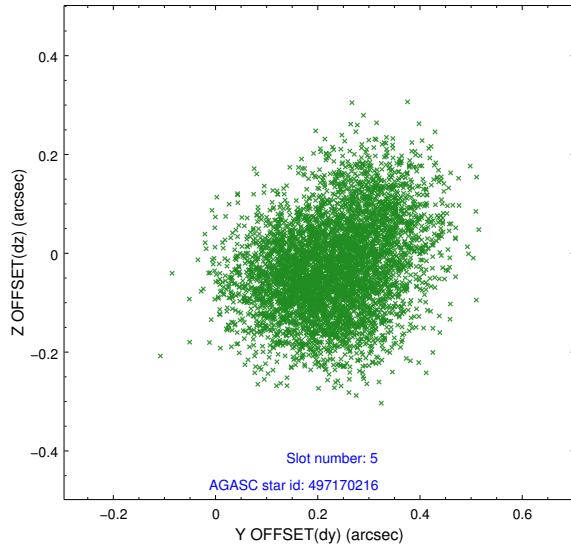
2.4.1 Slot 3



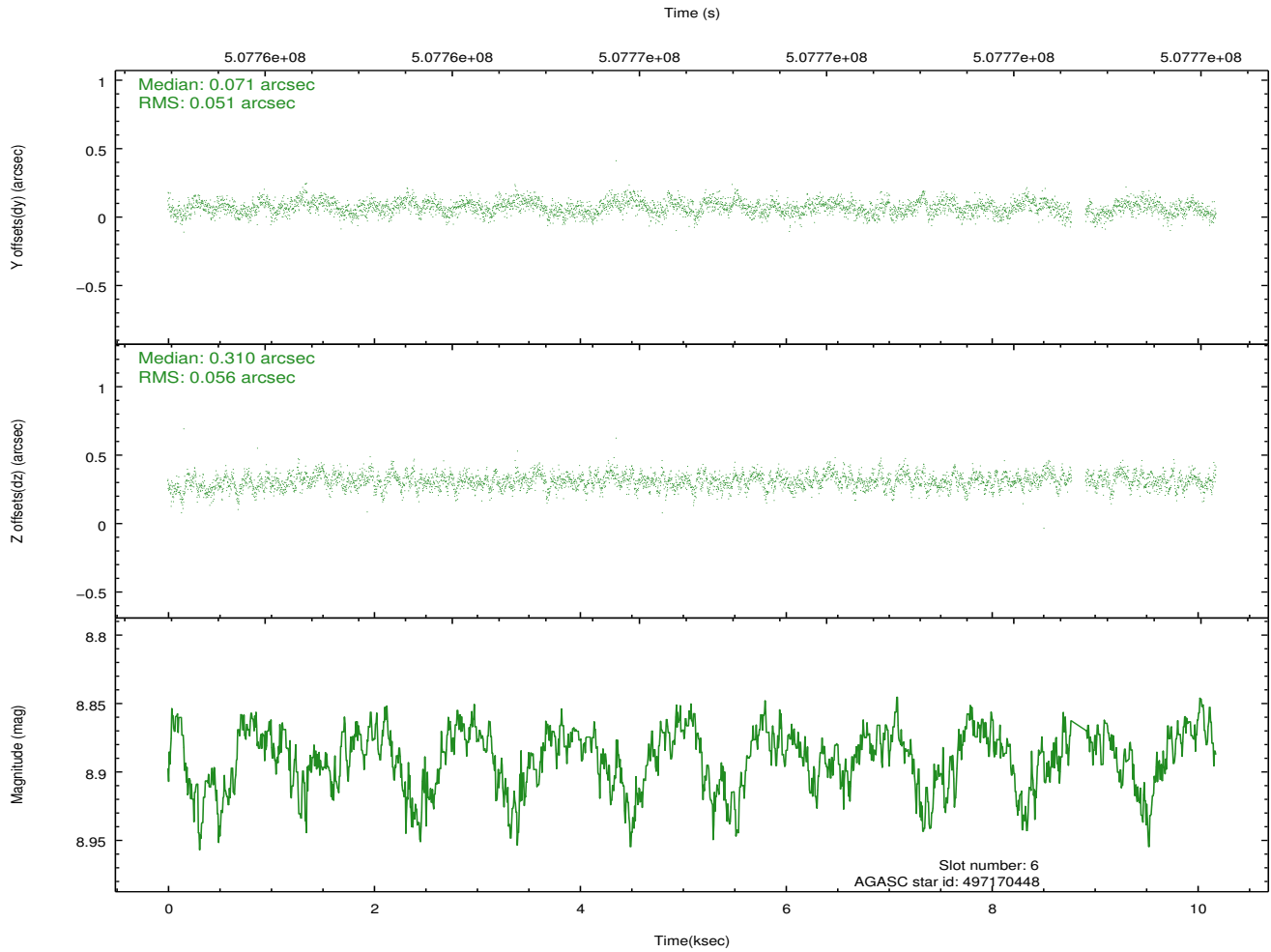
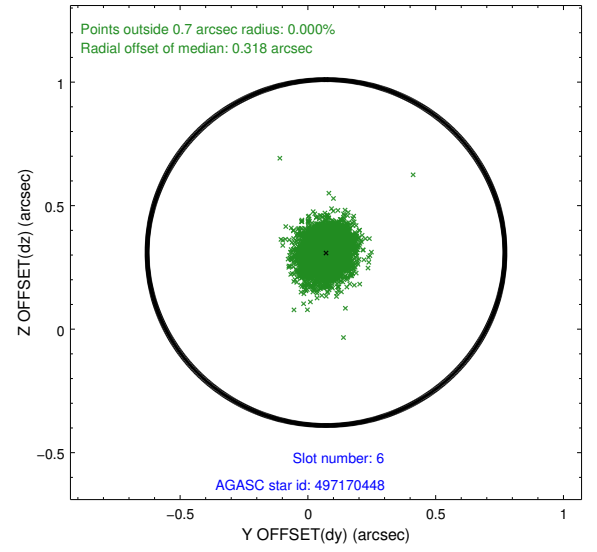
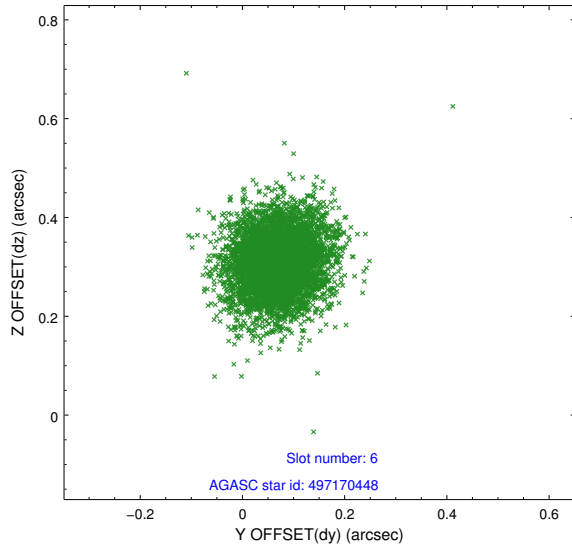
2.4.2 Slot 4



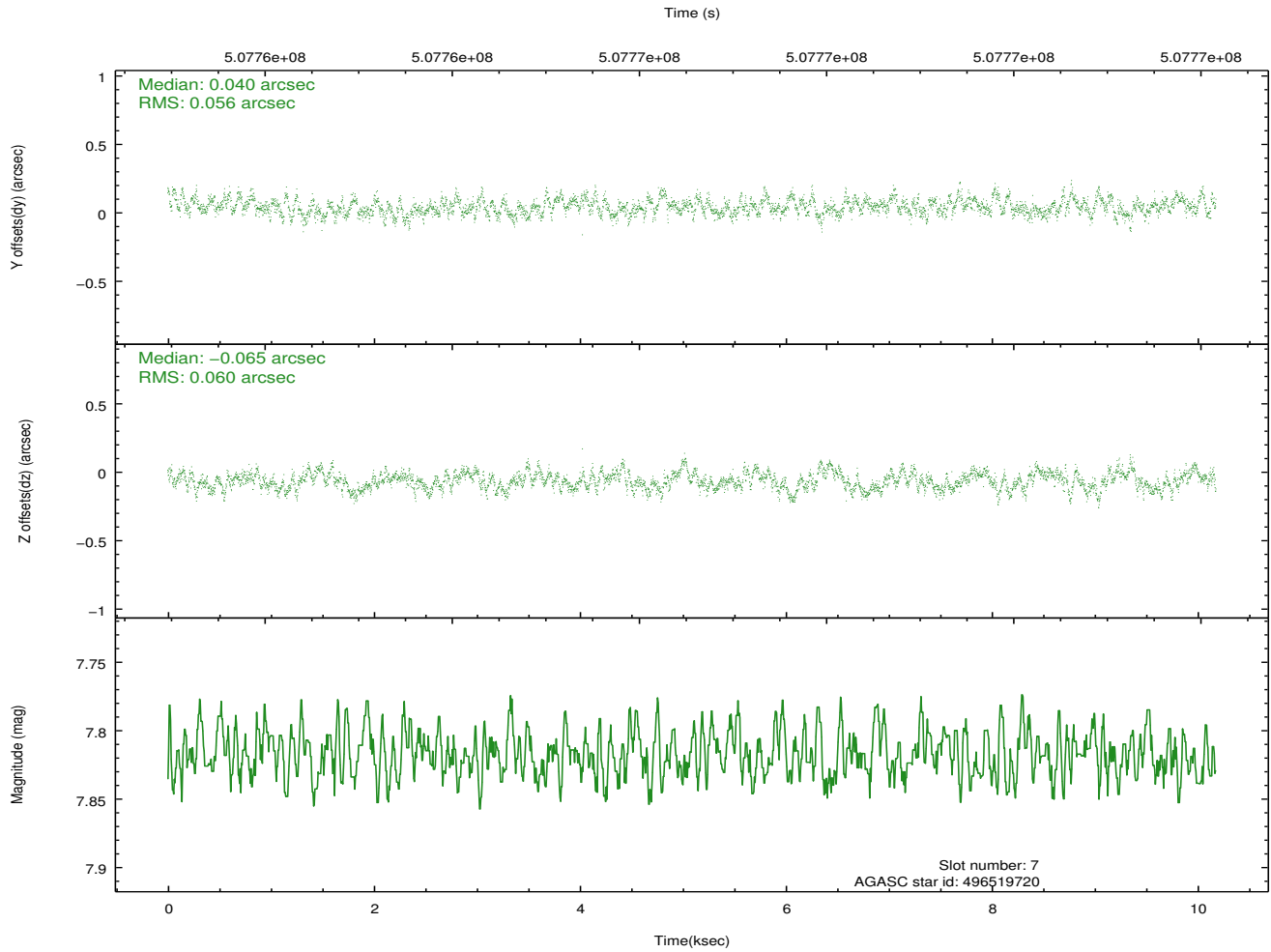
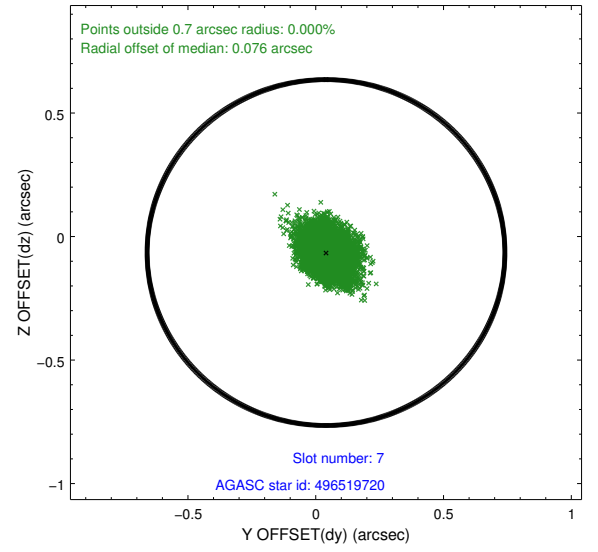
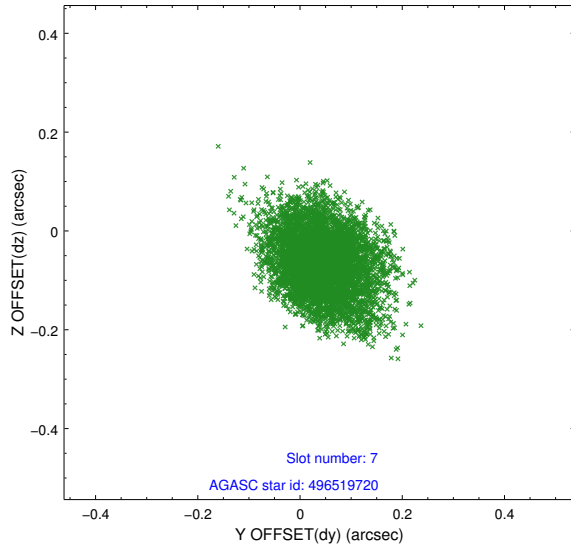
2.4.3 Slot 5



2.4.4 Slot 6

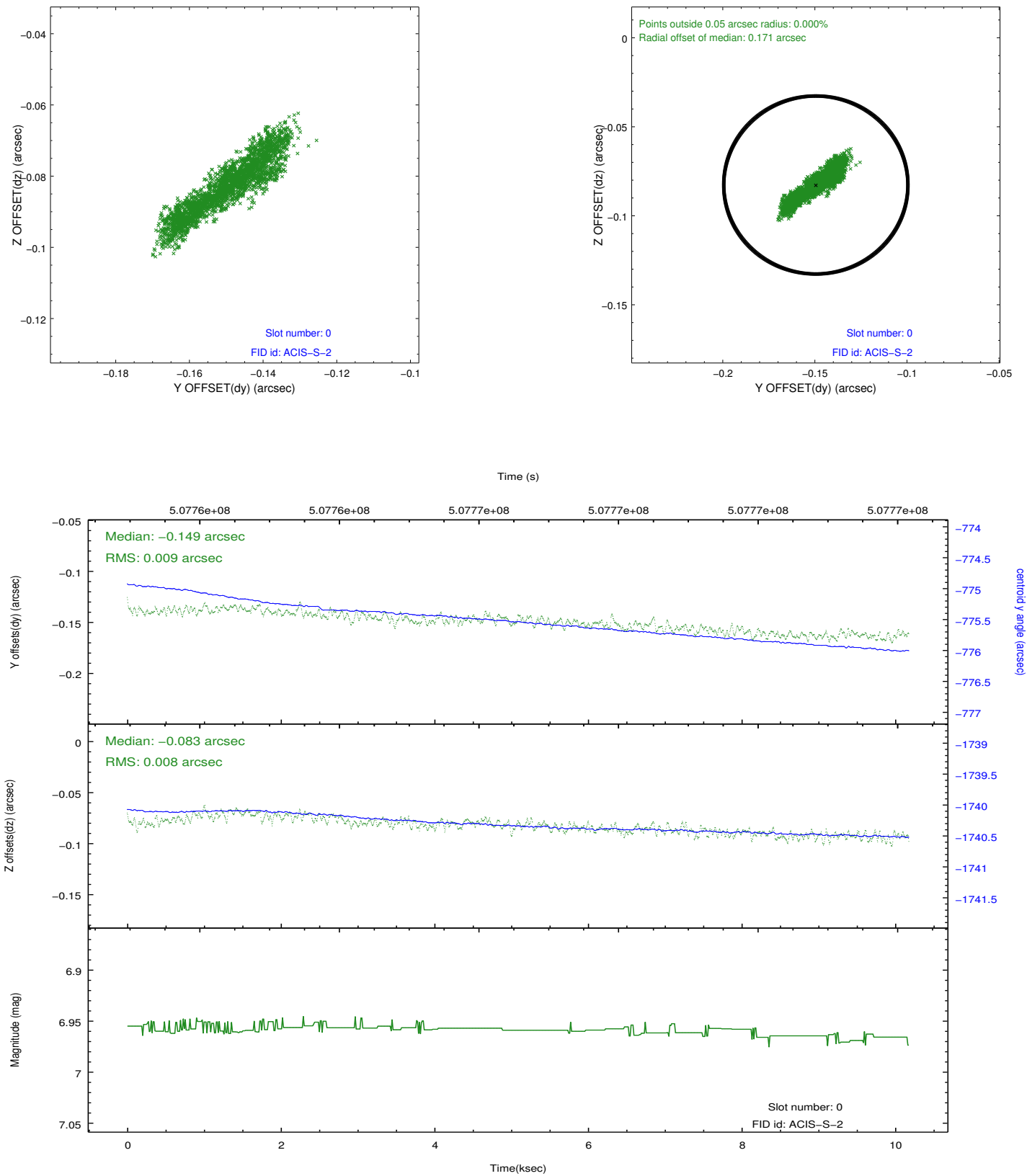


2.4.5 Slot 7

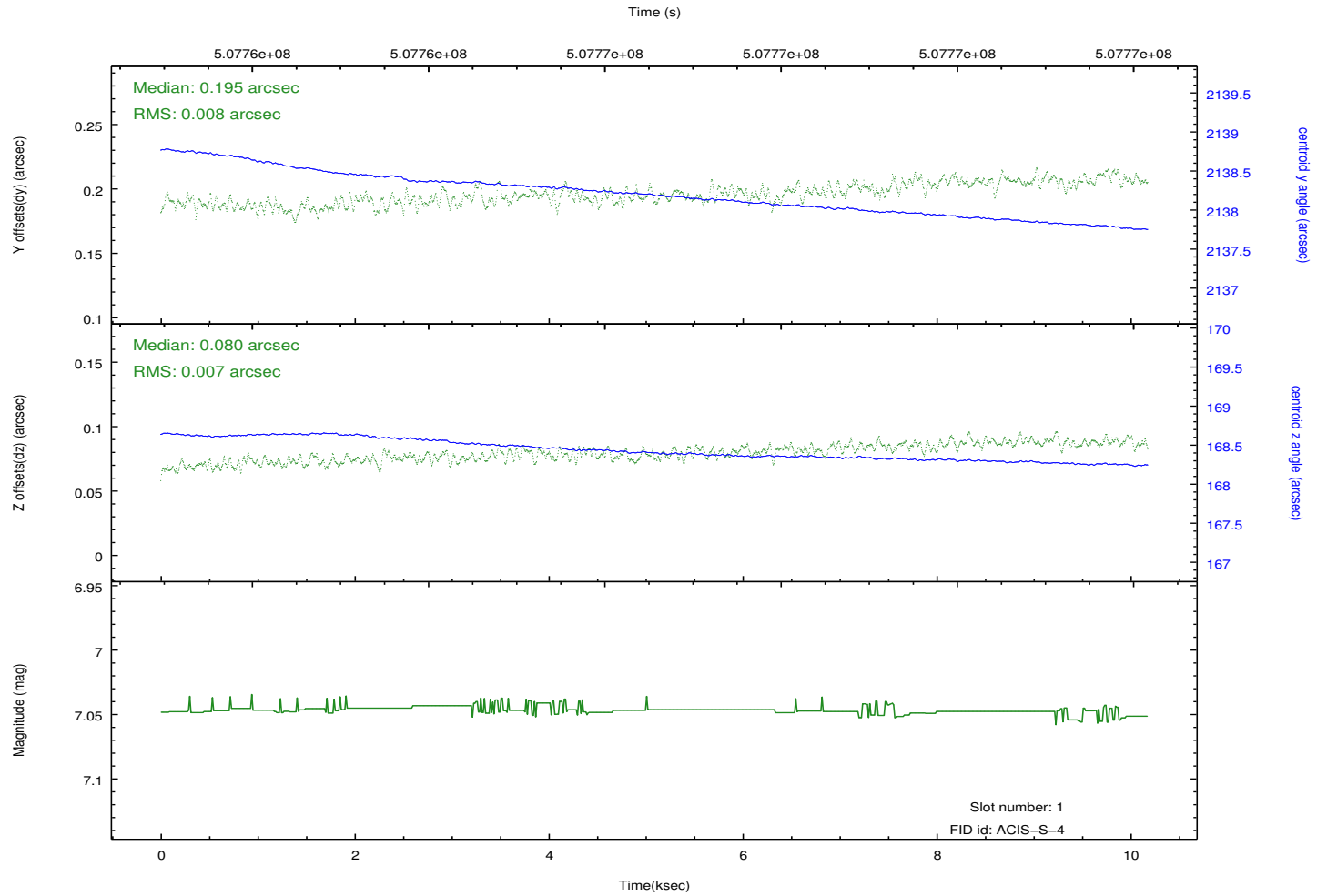
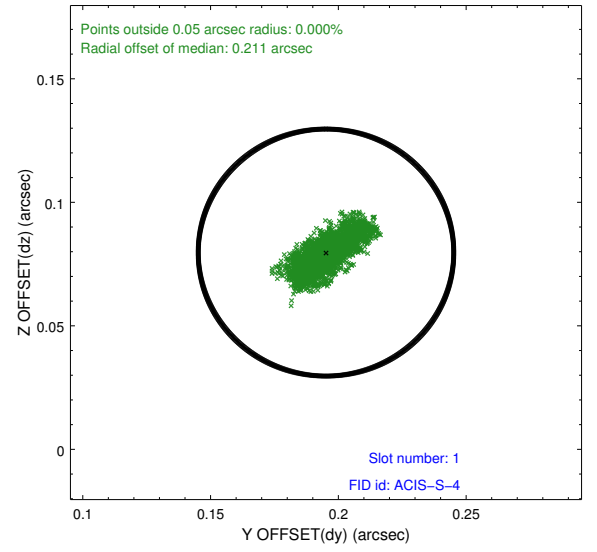
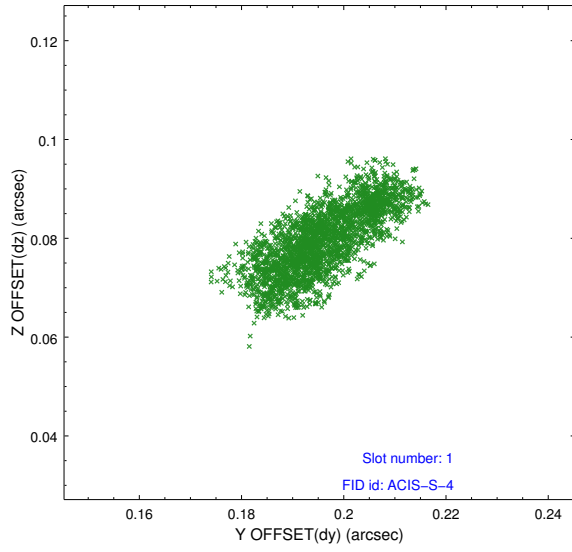


2.5 FID Slots

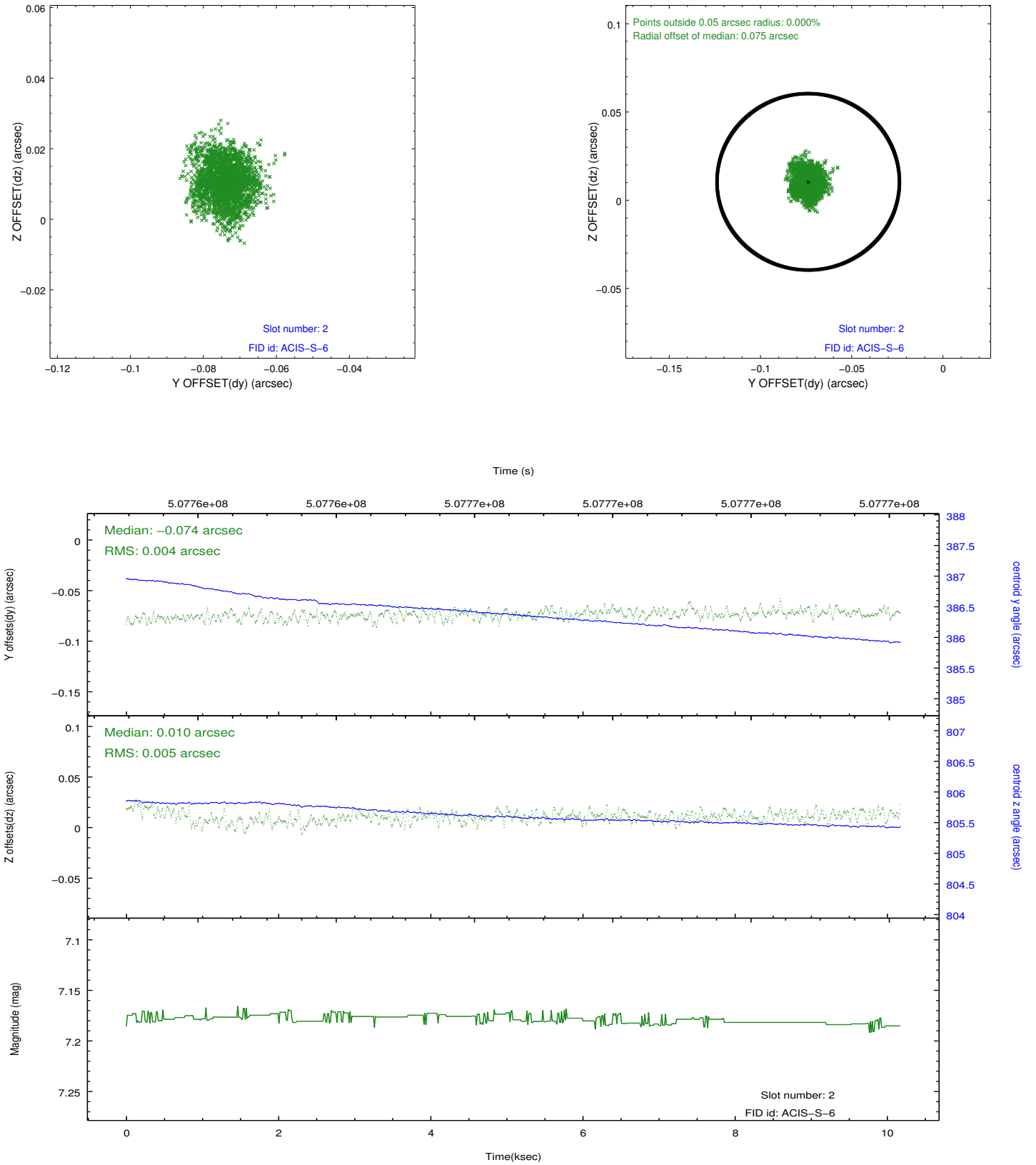
2.5.1 Slot 0



2.5.2 Slot 1



2.5.3 Slot 2



A Summary

A.1 Status

V&V Scientist	Beth Sundheim
V&V Date (YYYY-MM-DD)	2014.12.16
V&V Edition	1
V&V Disposition and Status	OK
V&V Charge Time	10.068800077438

A.2 Comments

These data have been reprocessed with new aspect alignment calibration files that correct small mean offsets (up to 0.4 arcsecs) and improve overall astrometric accuracy. The new calibration was determined using data from the time period being reprocessed and was performed using cross-correlation of X-ray sources with radio and optical counterparts.