

V&V Reference Report

L2 ASCDS Version : 7.6.9

Observation 1577 - L2 Version 001
Chandra X-Ray Center

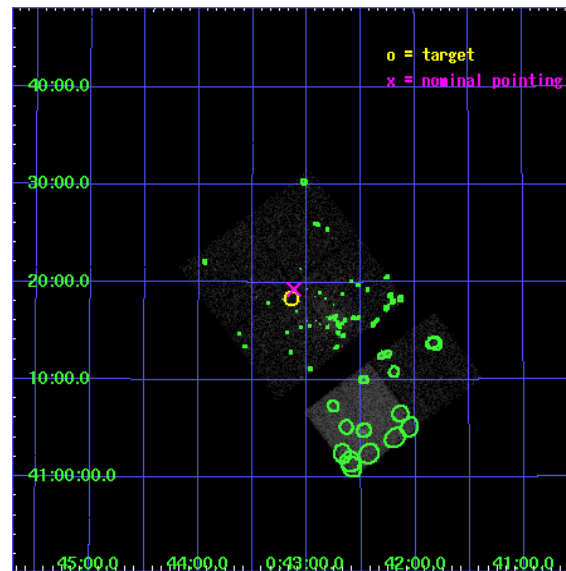
L2 Processing Date : Dec 21 2006

Contents

1	Front	2
2	OBI	3
2.1	OBI	3
2.1.1	Images	3
2.1.2	Bias	3
2.1.3	Parameters	4
2.1.4	Events	4
2.2	Compared Parameters	5
2.3	Aspect	6
2.4	Star Slots	9
2.4.1	Slot 3	9
2.4.2	Slot 4	10
2.4.3	Slot 5	11
2.4.4	Slot 6	12
2.4.5	Slot 7	13
2.5	FID Slots	14
2.5.1	Slot 0	14
2.5.2	Slot 1	15
2.5.3	Slot 2	16
3	Point Sources	17
A	Summary	18
A.1	Status	18
A.2	Comments	18

1 Front

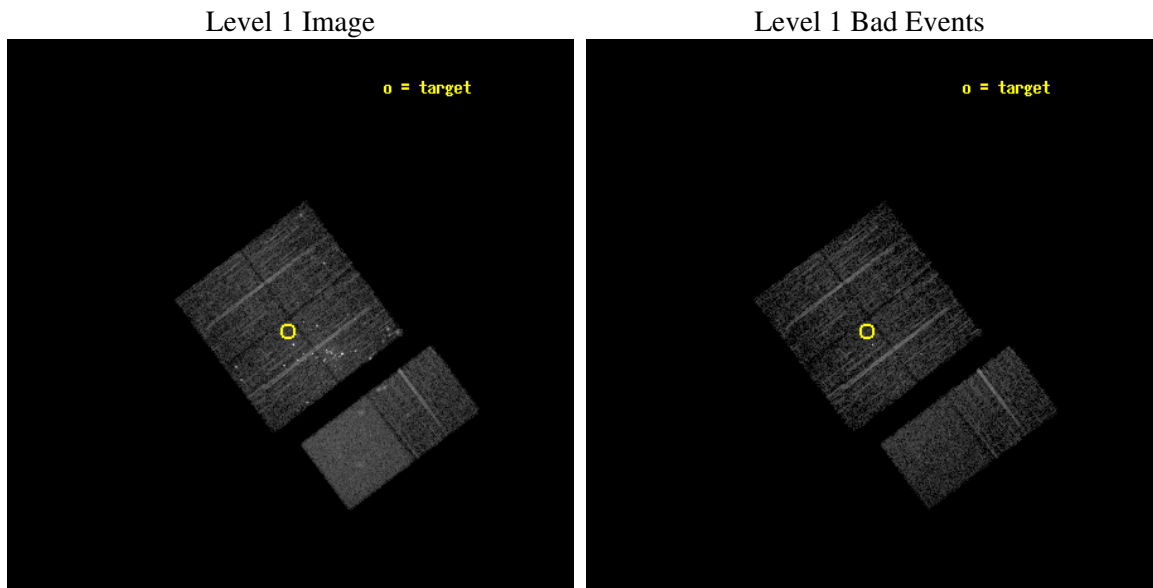
seq_num	600134
obs_id	1577
title	M31 NUCLEAR REGION
observer	Dr Stephen Murray
object	M31 NUCLEUS
dtcycle	0
cycle	P
ra_targ	10.785417
dec_targ	41.305556
ra_nom	10.780135090194
dec_nom	41.321339559327
roll_nom	143.00020895937
revision	2
ontime	4976.0000046343
livetime	4912.9908963881
ontime0	4972.7590144724
ontime1	4969.518133983
ontime2	4976.0000046343
ontime3	4976.0000046343
ontime6	4976.0000046343
ontime7	4976.0000046343
l2events	55888



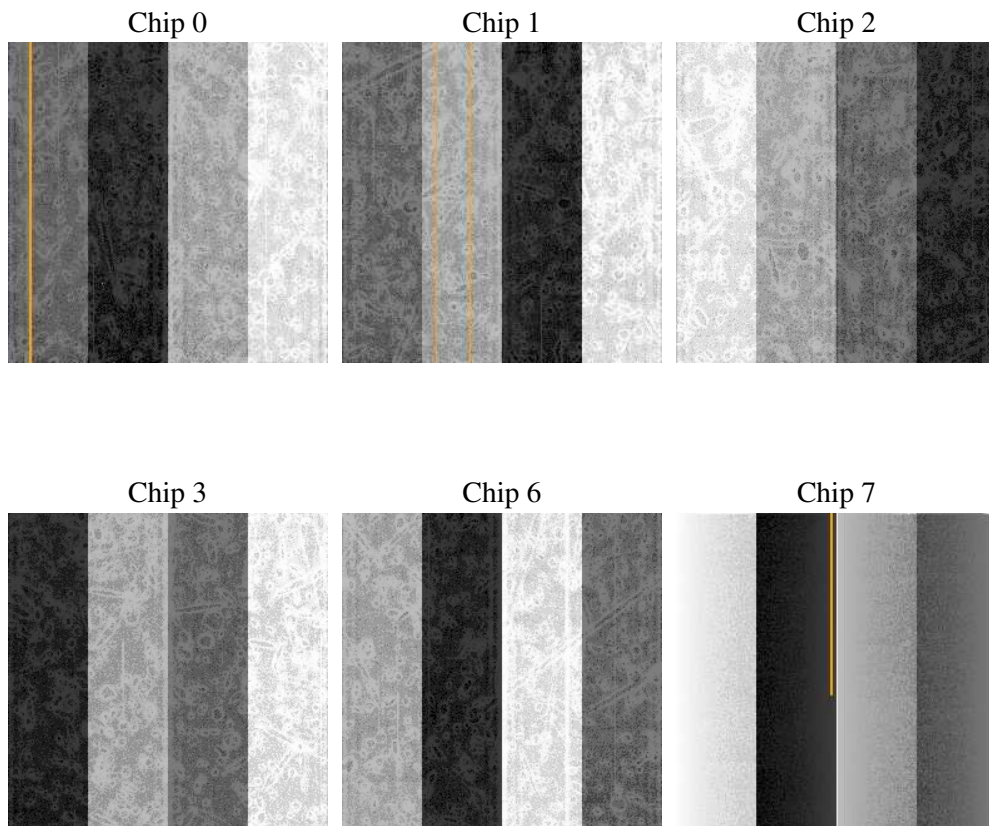
2 OBI

2.1 OBI

2.1.1 Images



2.1.2 Bias



2.1.3 Parameters

obi_num	0
ascdsver	7.6.9
caldsver	3.2.4
date	2006-12-22T00:29:12
revision	2

sched_exp_time	5022.000000
ontime	4981.4155970067
ontime0	4978.1746068448
ontime1	4974.9337064326
ontime2	4981.4155770838
ontime3	4981.4155970067
ontime6	4981.4155970067
ontime7	4981.4155970067
l1events	213460

2.1.4 Events

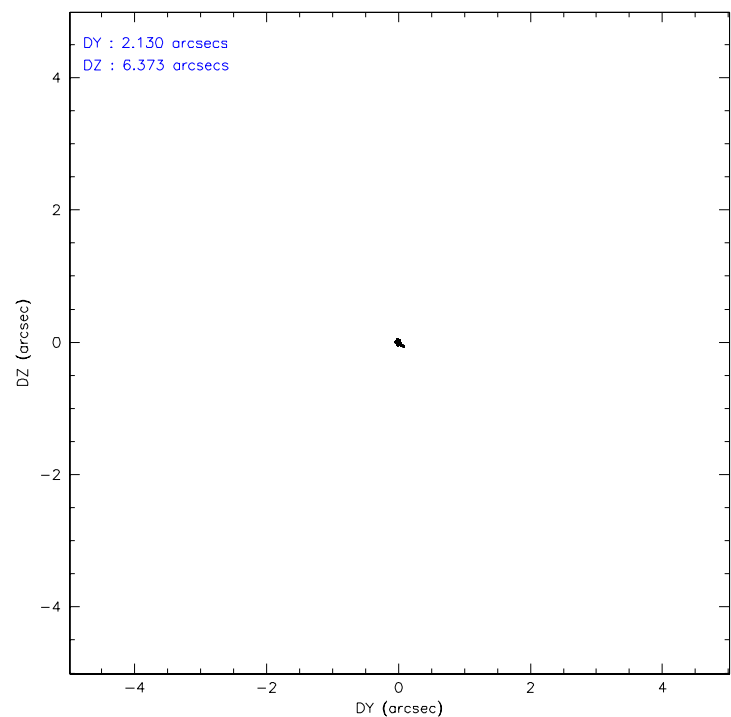
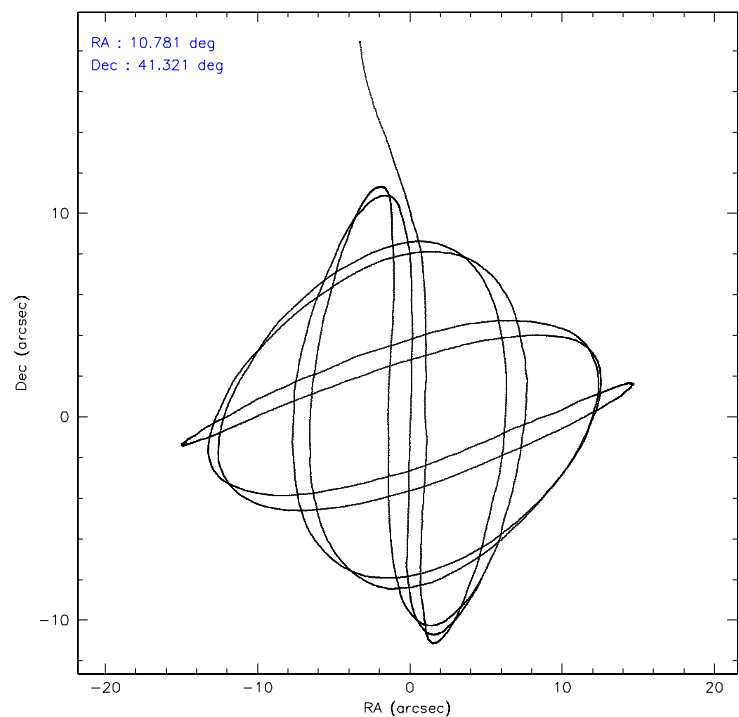
	ccd 0	ccd 1	ccd 2	ccd 3	ccd 6	ccd 7
level 1 events	29759	28690	39478	36239	31362	47932
rejected events	24900	24236	26416	27355	26249	24394
rejected %	83%	84%	66%	75%	83%	50%

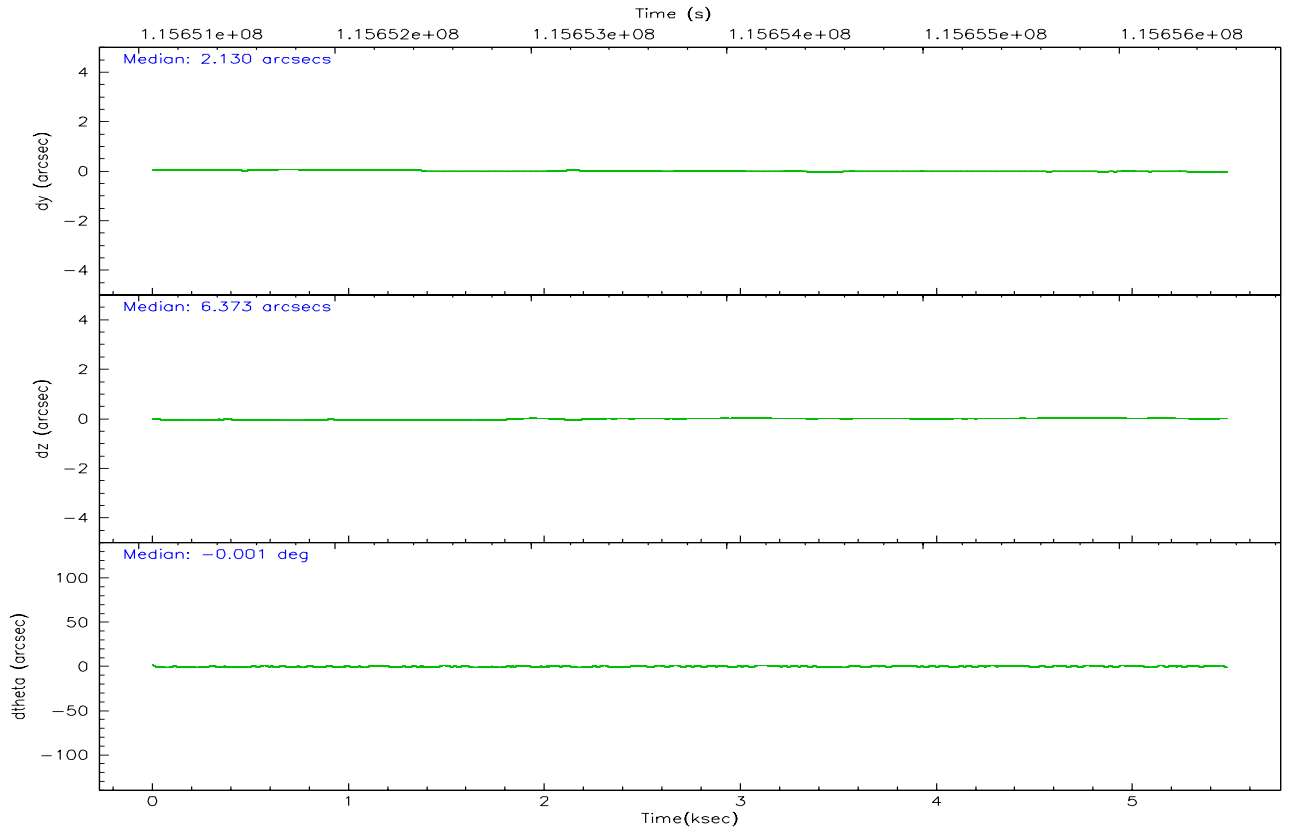
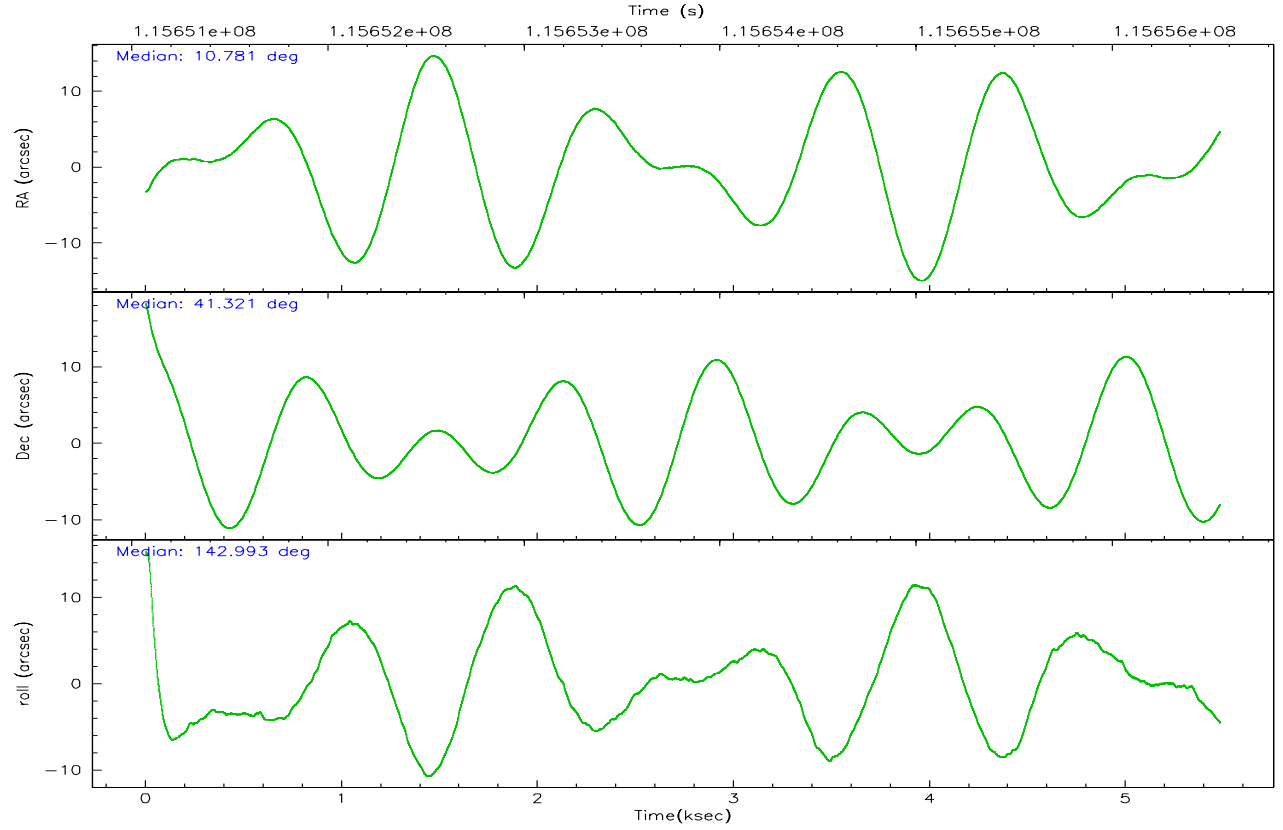
	ccd 0	ccd 1	ccd 2	ccd 3	ccd 6	ccd 7
grade 0 events	2557	2087	9394	5691	2863	2054
	8%	7%	23%	15%	9%	4%
grade 1 events	18	16	118	267	19	24
	0%	0%	0%	0%	0%	0%
grade 2 events	943	882	1691	1314	836	5400
	3%	3%	4%	3%	2%	11%
grade 3 events	362	385	609	523	341	1348
	1%	1%	1%	1%	1%	2%
grade 4 events	332	369	595	534	371	1404
	1%	1%	1%	1%	1%	2%
grade 5 events	1055	1142	1048	1341	1330	2562
	3%	3%	2%	3%	4%	5%
grade 6 events	670	733	785	835	714	13366
	2%	2%	1%	2%	2%	27%
grade 7 events	23822	23076	25238	25734	24888	21774
	80%	80%	63%	71%	79%	45%

2.2 Compared Parameters

Parameter	Planned	Actual	Parameter	Planned	Actual
Instrument	ACIS	ACIS	Obspar format version number	6	6
Detector	ACIS-012367	ACIS-012367	Obspar file type	PREDICTED	ACTUAL
Grating	NONE	NONE	Obspar update status	NONE	UPDATED
Data mode	FAINT	FAINT	Number of optional ACIS chips dropped	0	0
Observation mode	POINTING	POINTING	On-chip summing requested	N	N
Pointing RA	10.816408	10.78013509019438	Subarray requested	NONE	NONE
Pointing Dec	41.318050	41.32133955932652	Alternating exposures requested	N	N
Pointing Roll	142.767517	143.0002089593693	Primary exposure time	0.000000	3.2
Window start time	115257664.184000	115257664.184000			
Window stop time	115776064.184000	115776064.184000			
SIM focus pos (mm)	-0.782348	-0.7809083437167272			
SIM defocus (mm)	0	0.001439871863259334			
SIM translation stage pos (mm)	-233.592463	-233.5874344608287			
SIM translation stage offset (mm)	0	-0.005018542100998502			
Observation start time	115651535.184000	115650436.8531			
Observation start date	2001-08-31T13:24:31	2001-08-31T13:07:16			
Observation end time	115656557.184000	115657282.82837			
Observation end date	2001-08-31T14:48:13	2001-08-31T15:01:22			
Read mode	TIMED	TIMED			

2.3 Aspect



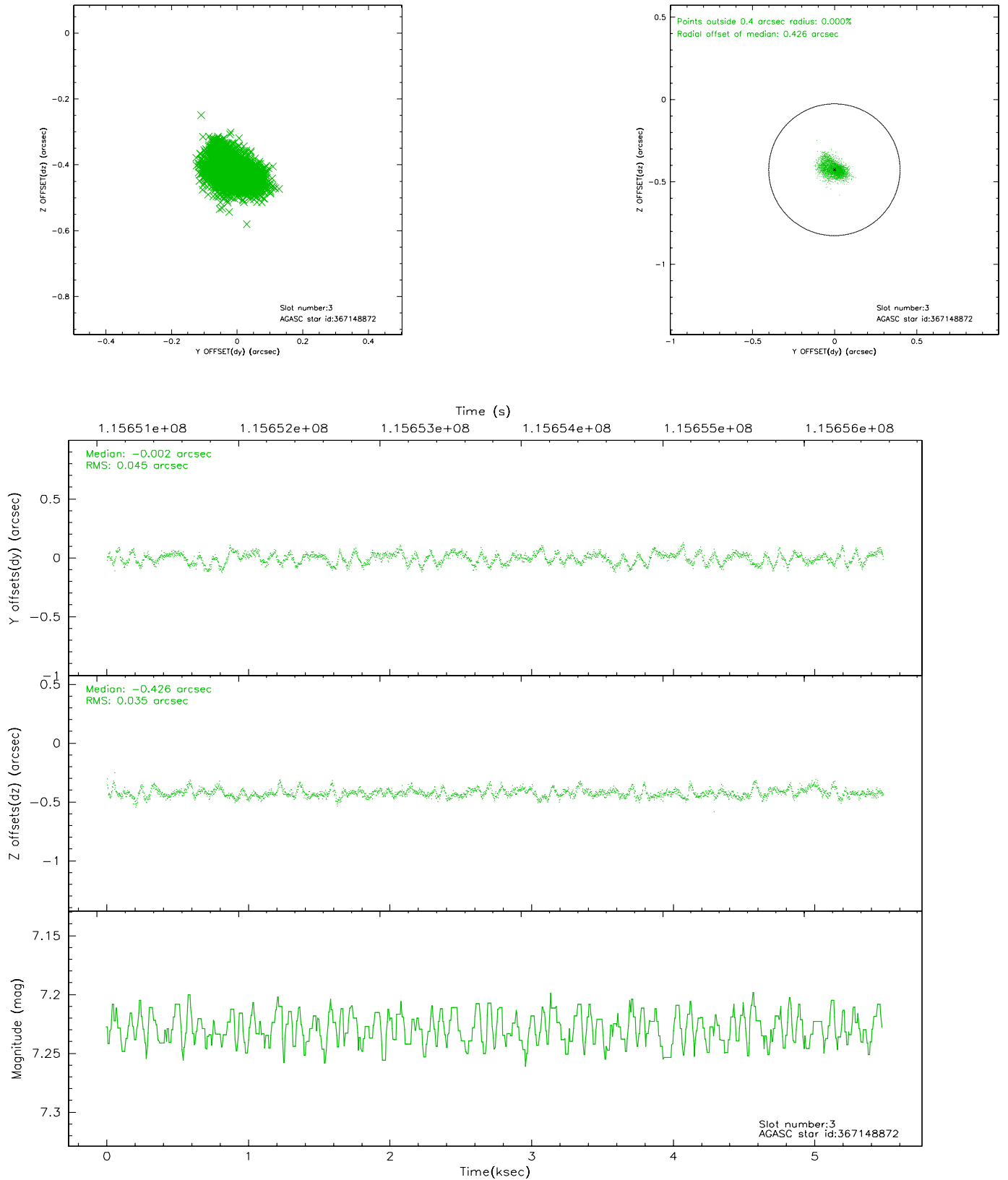


Slot Statistics

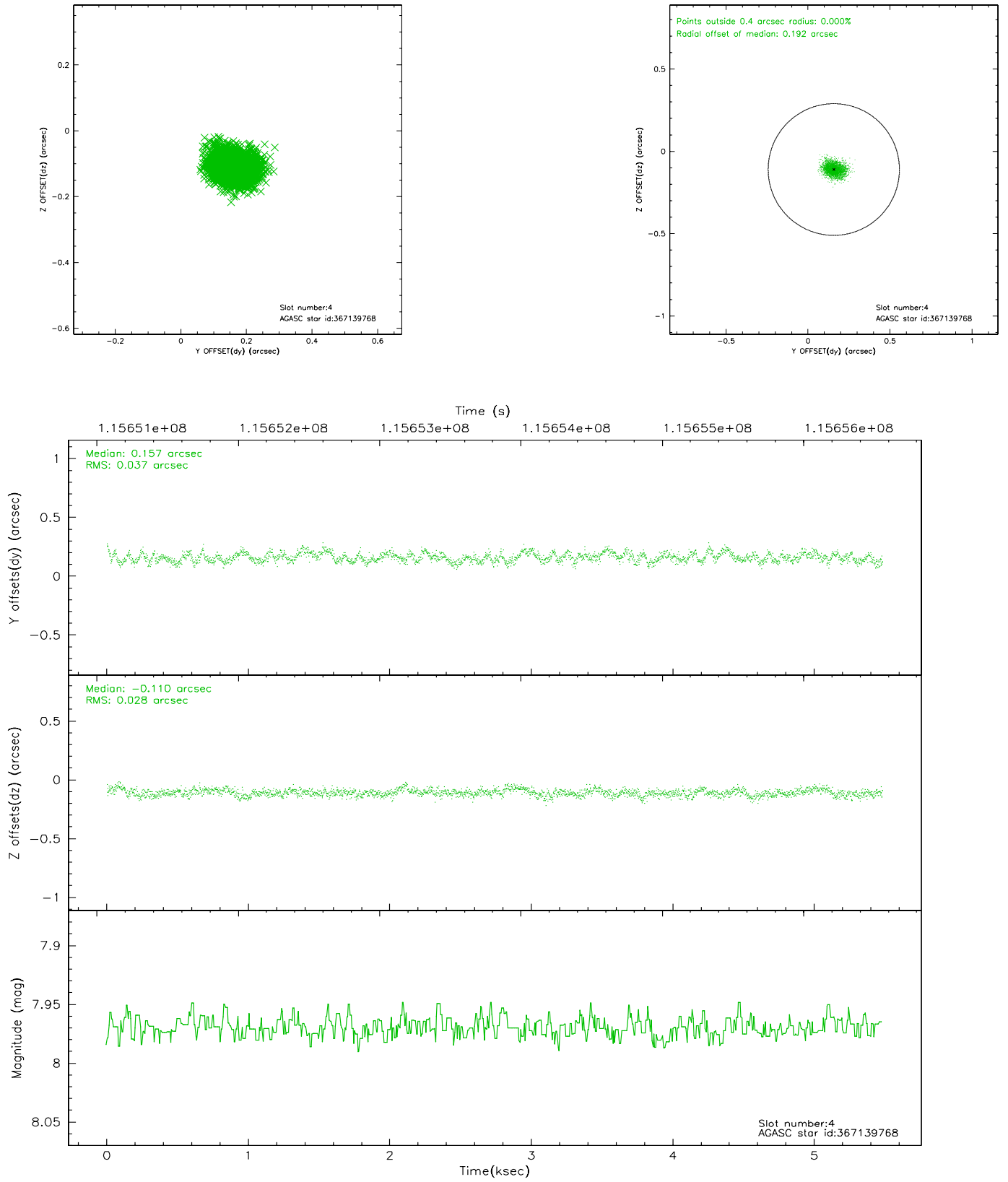
slot	status	id	mag	n_pts	med_dy	med_dz	dr1	dr2	ra	dec	mean_y	mean_z
0	FID	ACIS-I-1	7.24	1336	-0.036	0.054	0.006	0.010	0.000000	0.000000	937.63	-829.71
1	FID	ACIS-I-5	7.23	1336	0.002	0.035	0.006	0.010	0.000000	0.000000	-1809.79	1067.26
2	FID	ACIS-I-6	7.26	1337	-0.057	-0.018	0.006	0.011	0.000000	0.000000	402.01	1712.92
3	GUIDE	367148872	7.23	2674	-0.002	-0.426	0.061	0.100	10.505940	40.688258	-694.77	2316.81
4	GUIDE	367139768	7.97	2674	0.157	-0.110	0.049	0.079	11.069715	40.685175	-1927.12	1395.85
5	GUIDE	367657272	8.40	2672	0.084	0.224	0.060	0.099	11.834471	41.298907	-2222.96	-1623.04
6	GUIDE	367674552	8.84	2671	-0.022	0.120	0.064	0.104	11.016238	41.570845	123.43	-1050.73
7	GUIDE	367671800	9.41	2668	-0.217	0.192	0.088	0.143	10.554735	41.964935	1969.09	-1430.73

2.4 Star Slots

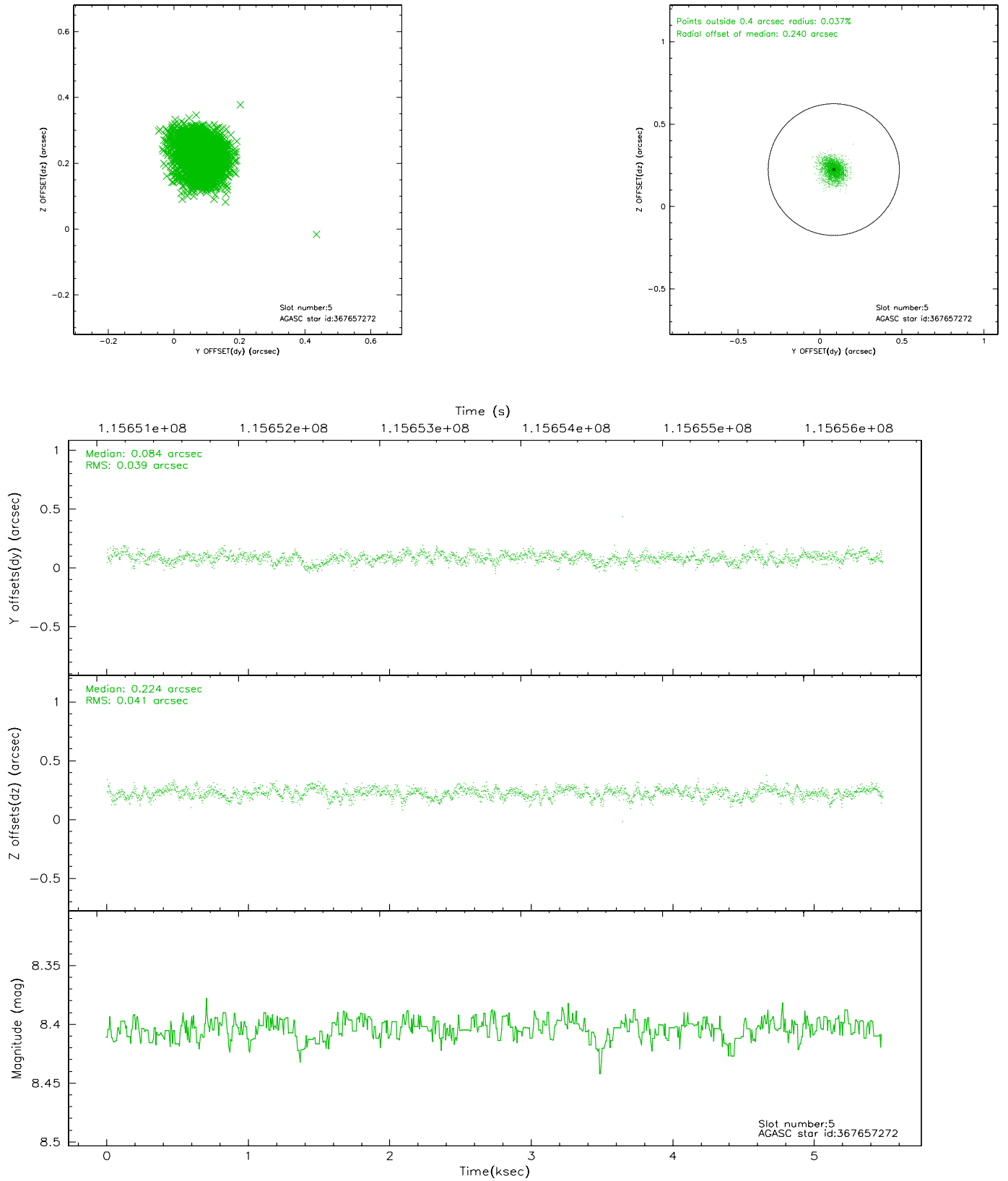
2.4.1 Slot 3



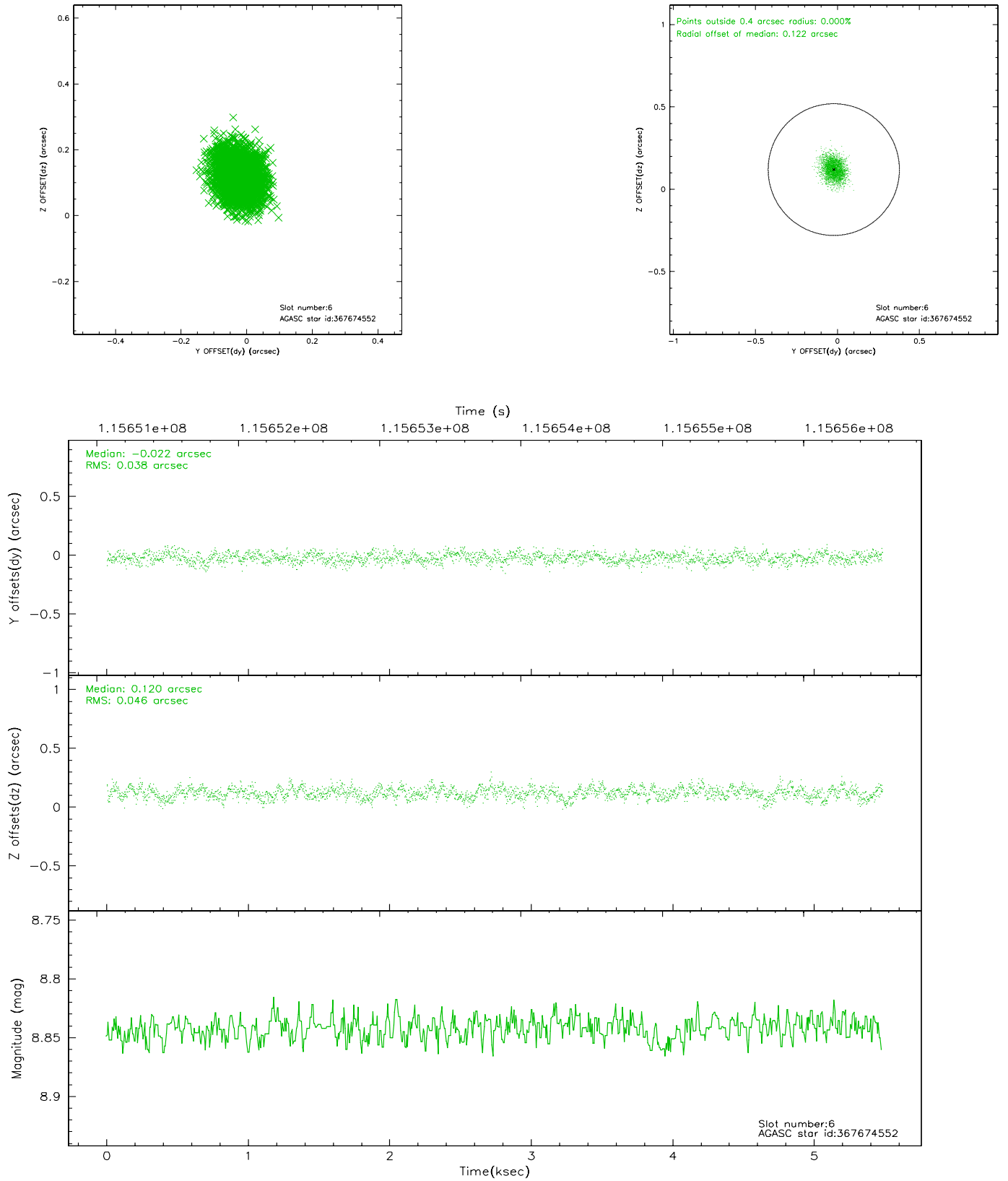
2.4.2 Slot 4



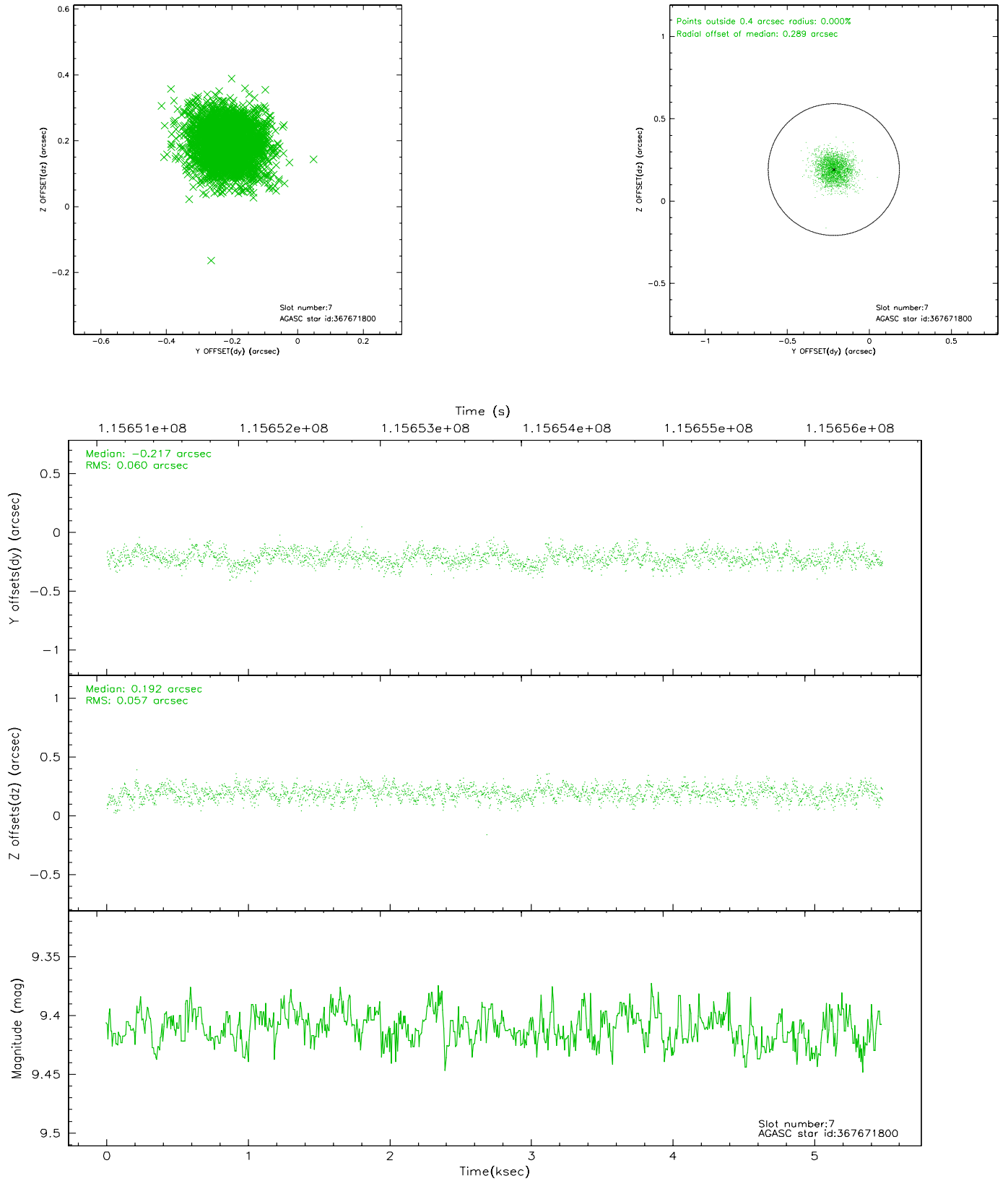
2.4.3 Slot 5



2.4.4 Slot 6

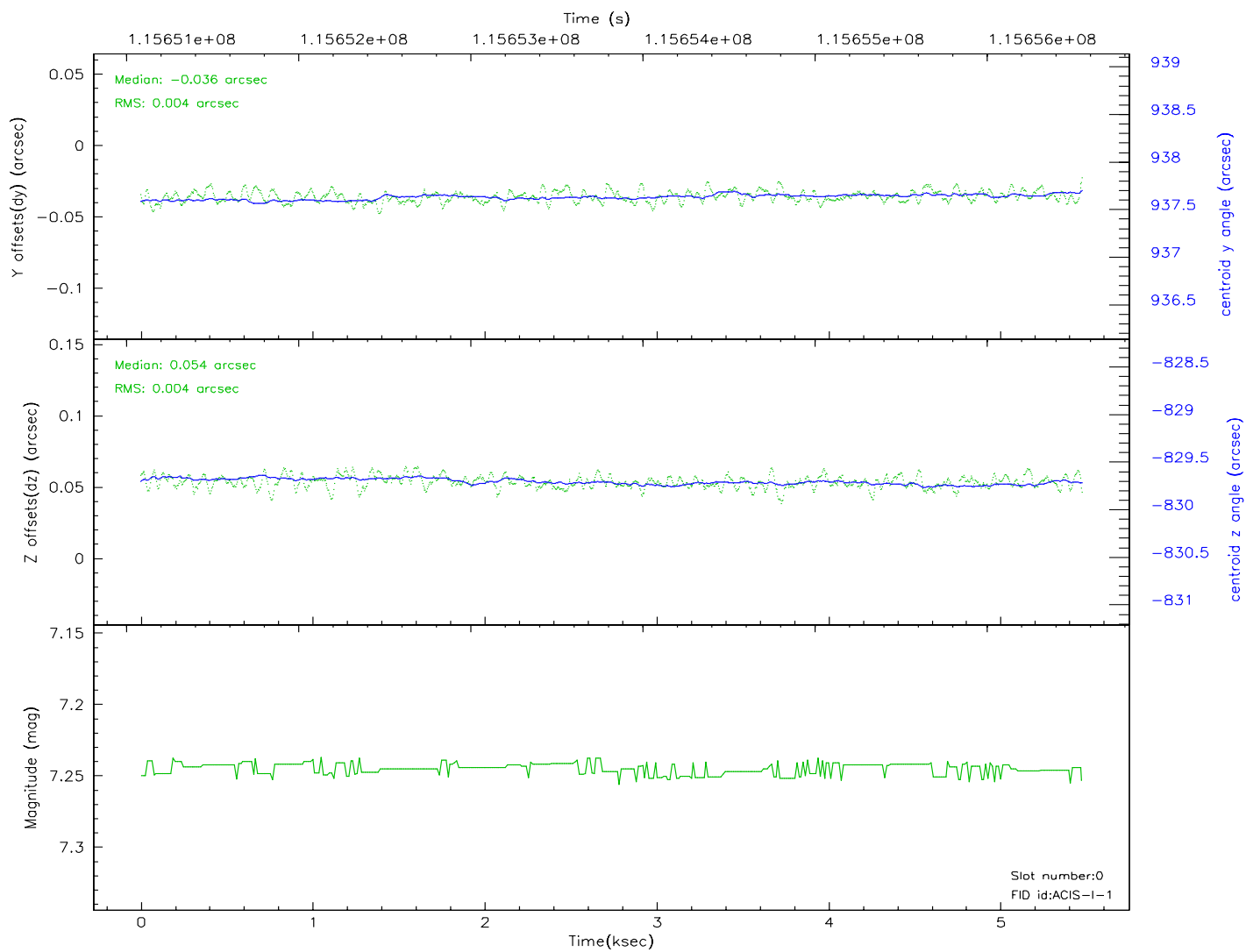
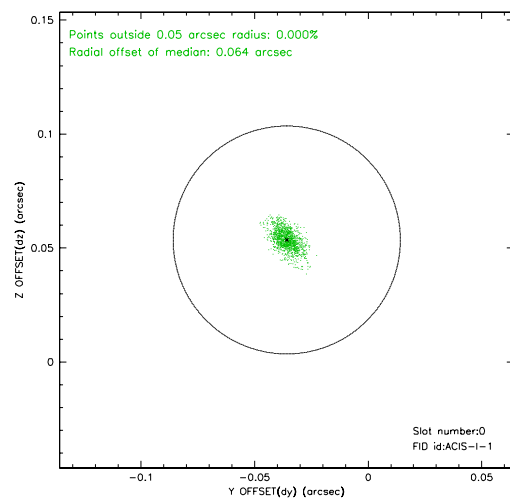
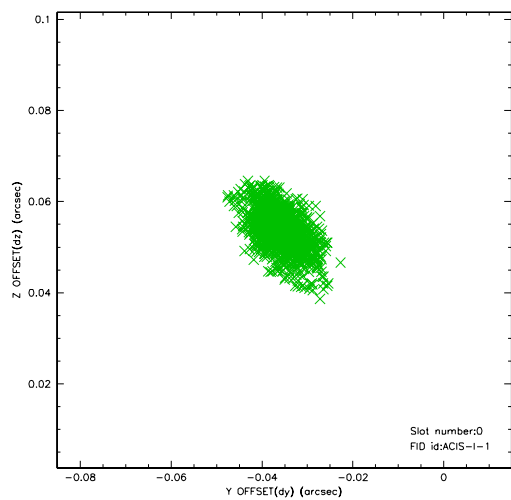


2.4.5 Slot 7

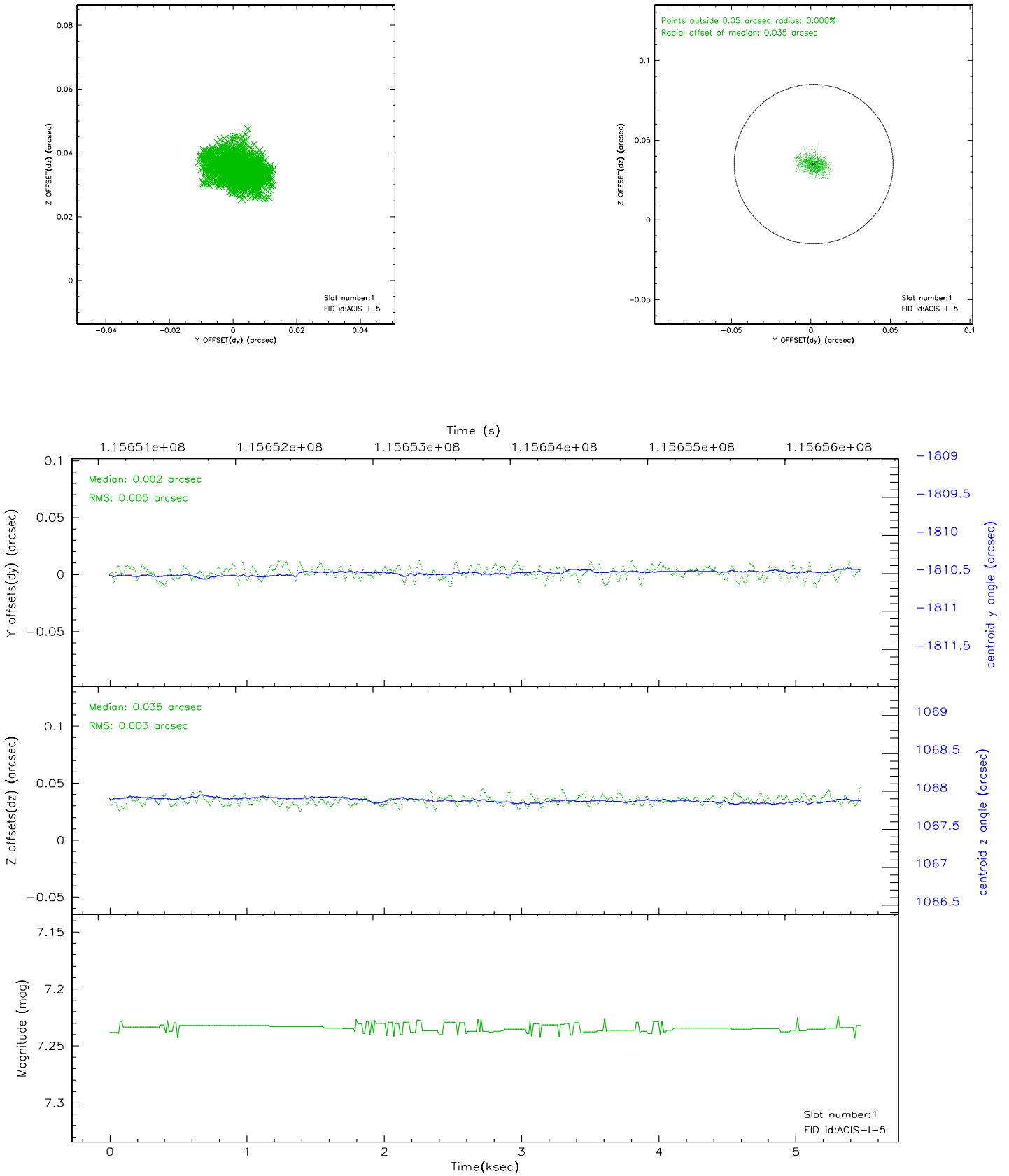


2.5 FID Slots

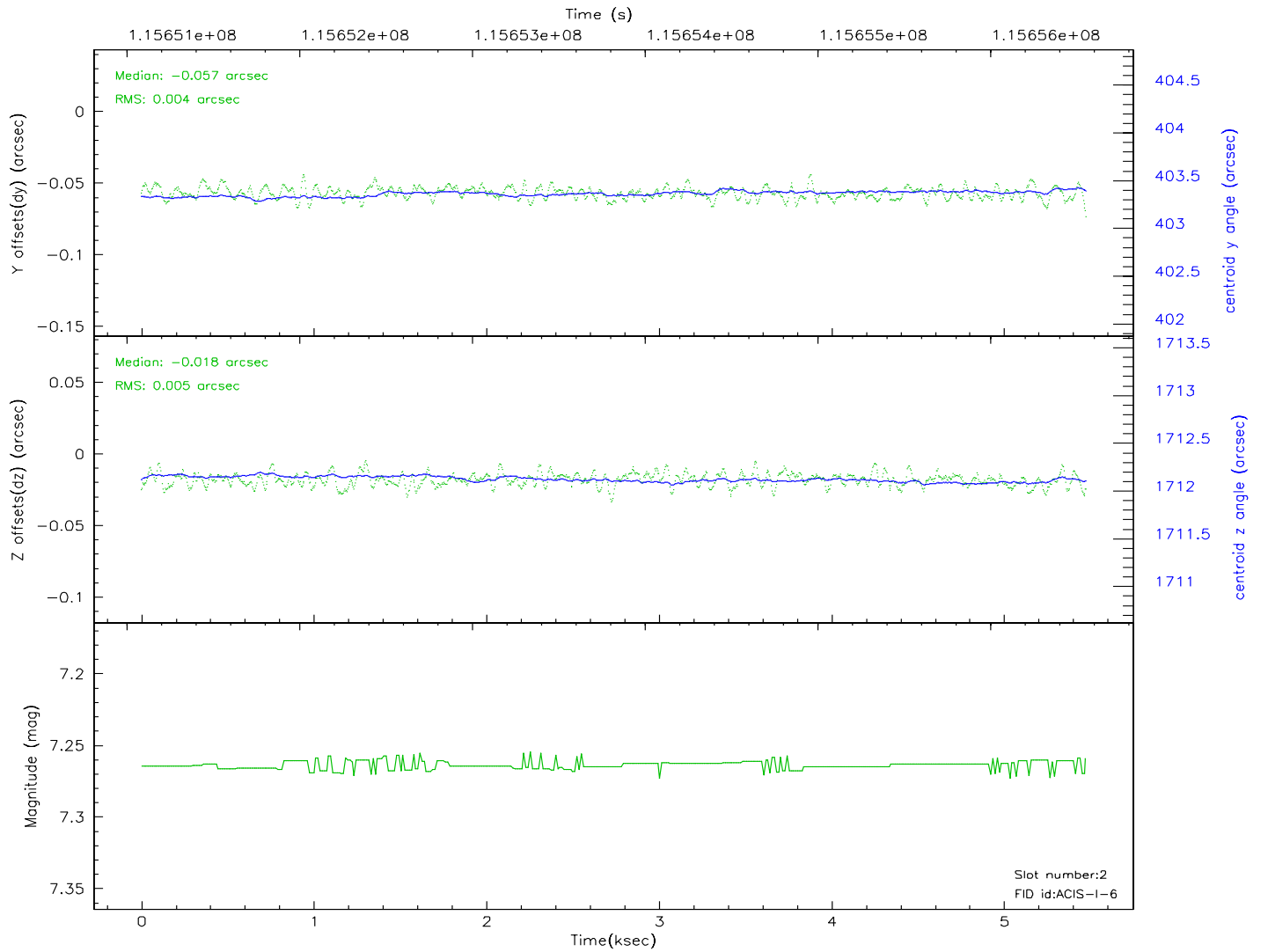
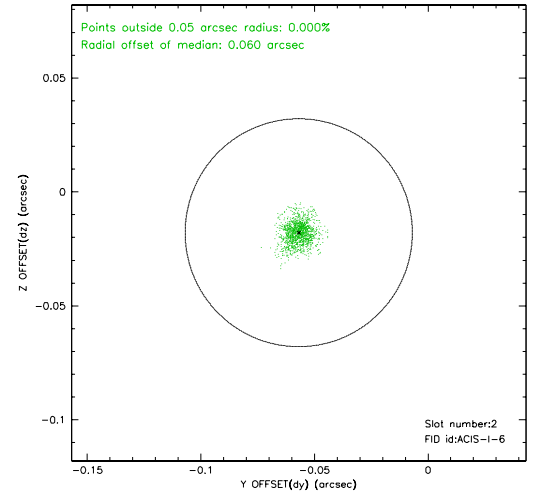
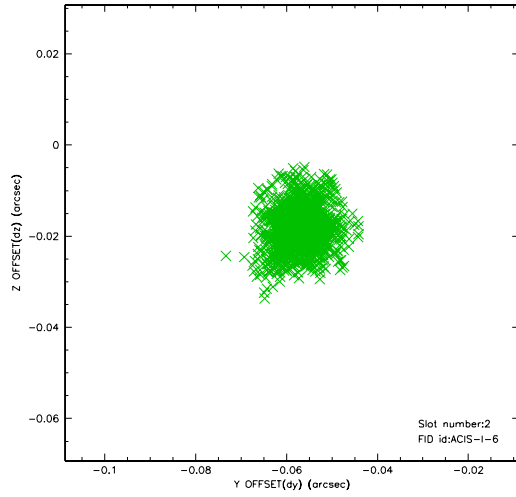
2.5.1 Slot 0



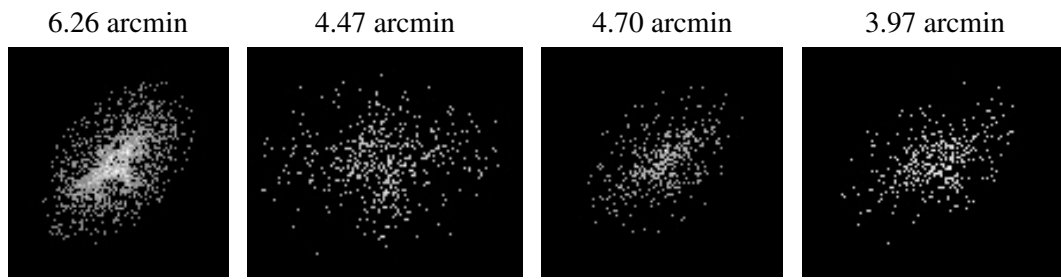
2.5.2 Slot 1



2.5.3 Slot 2



3 Point Sources



A Summary

A.1 Status

V&V Scientist	Jen Lauer
V&V Date (YYYY-MM-DD)	2006.12.22
V&V Edition	1
V&V Disposition and Status	OK
V&V Charge Time	4.979

A.2 Comments

Window constraint met.