

V&V Reference Report

L2 ASCDS Version : 7.6.9

Observation 1537 - L2 Version 001
Chandra X-Ray Center

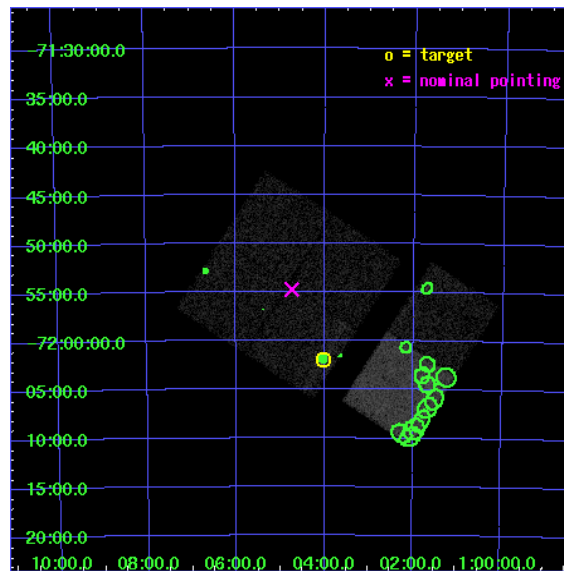
L2 Processing Date : Nov 25 2006

Contents

1	Front	2
2	OBI	3
2.1	OBI	3
2.1.1	Images	3
2.1.2	Bias	3
2.1.3	Parameters	4
2.1.4	Events	4
2.2	Compared Parameters	5
2.3	Aspect	6
2.4	Star Slots	9
2.4.1	Slot 3	9
2.4.2	Slot 4	10
2.4.3	Slot 5	11
2.4.4	Slot 6	12
2.4.5	Slot 7	13
2.5	FID Slots	14
2.5.1	Slot 0	14
2.5.2	Slot 1	15
2.5.3	Slot 2	16
3	Point Sources	17
A	Summary	18
A.1	Status	18
A.2	Comments	18

1 Front

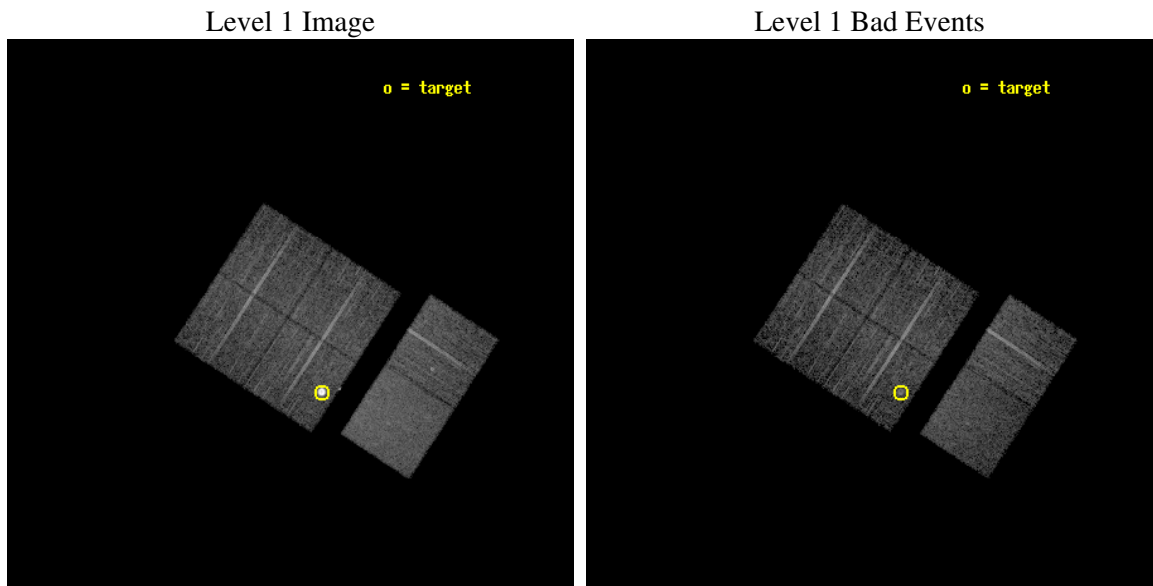
seq_num	590146
obs_id	1537
title	ACIS CALIBRATION OBSERVATION OF THE SUPERNOVA REMNANT E0102-72 (JUNE 2001)
observer	Dr. CXC Calibration
object	E0102-72.3 [Chip I3, T=120, Offsets=-4,6,0]
dtcycle	0
cycle	P
ra_targ	16.01
dec_targ	-72.032028
ra_nom	16.184607126718
dec_nom	-71.912567728311
roll_nom	123.13688466924
revision	2
ontime	7513.6000069976
livetime	7418.4582795622
ontime0	7513.6000069976
ontime1	7513.6000069976
ontime2	7513.6000069976
ontime3	7513.6000069976
ontime6	7513.6000069976
ontime7	7513.6000069976
l2events	70070



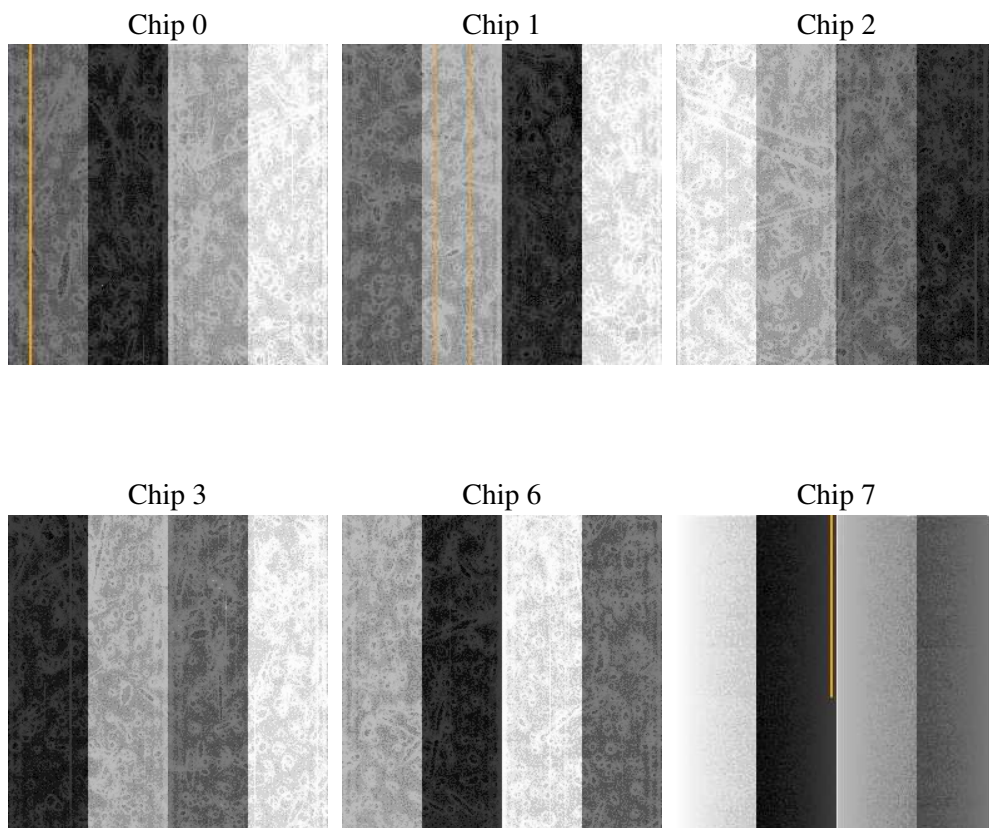
2 OBI

2.1 OBI

2.1.1 Images



2.1.2 Bias



2.1.3 Parameters

obi_num	0
ascdsver	7.6.9
caldsver	3.2.4
date	2006-11-25T07:05:39
revision	2

sched_exp_time	7755.000000
ontime	7519.11595276
ontime0	7519.1159826815
ontime1	7519.1159826815
ontime2	7519.1159826815
ontime3	7519.11595276
ontime6	7519.1159826815
ontime7	7519.1159826815
l1events	325236

2.1.4 Events

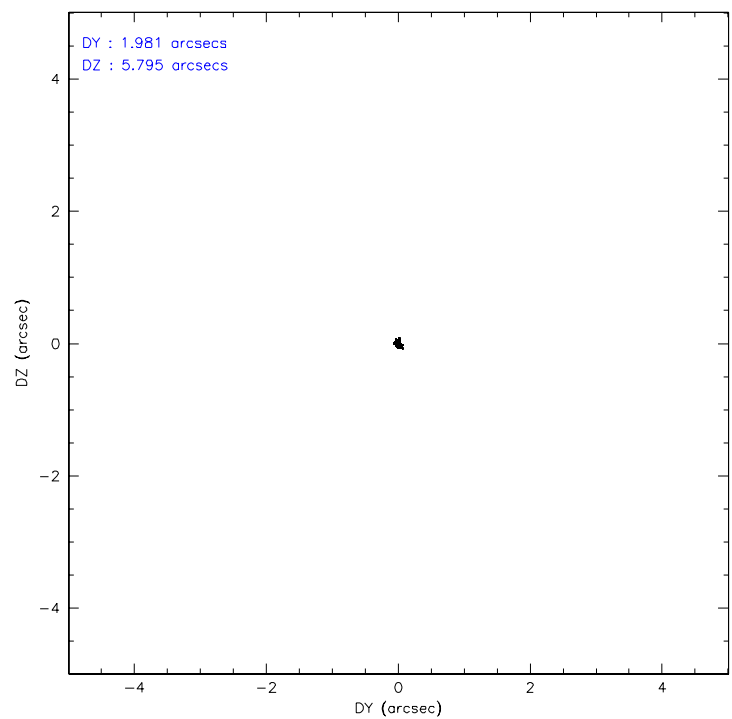
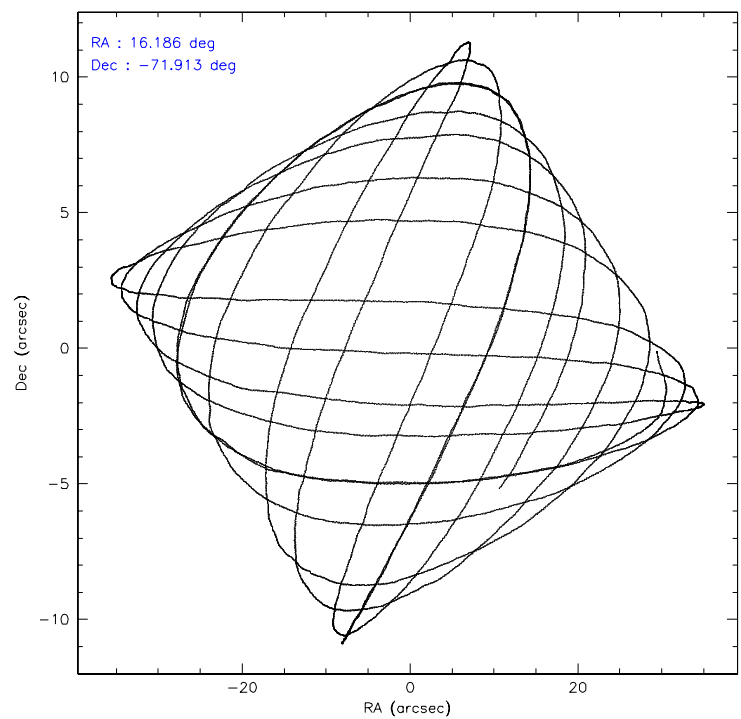
	ccd 0	ccd 1	ccd 2	ccd 3	ccd 6	ccd 7
level 1 events	44835	44068	48394	71288	53003	63648
rejected events	39063	38159	42884	43257	46848	39063
rejected %	87%	86%	88%	60%	88%	61%

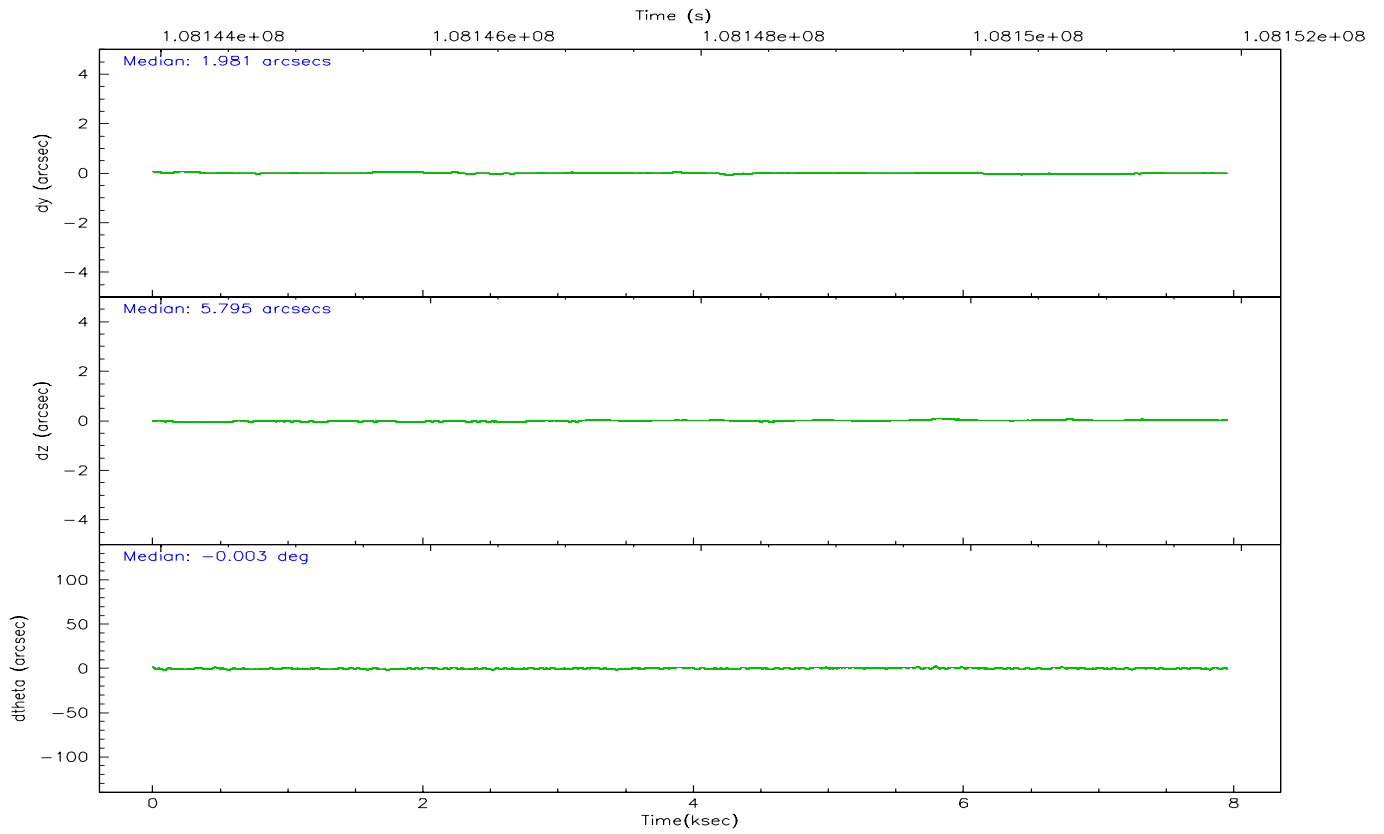
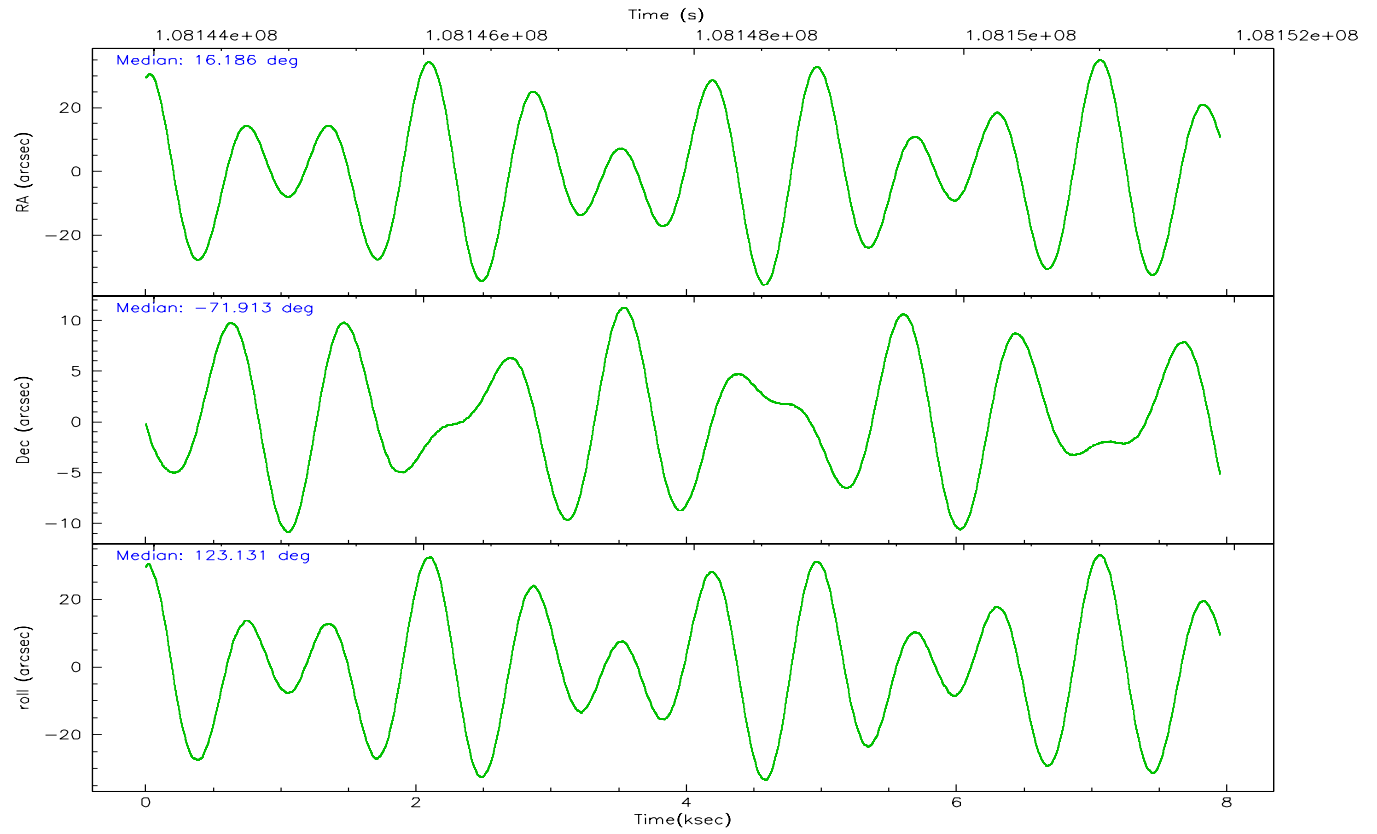
	ccd 0	ccd 1	ccd 2	ccd 3	ccd 6	ccd 7
grade 0 events	2492	2408	2349	22243	2747	1650
	5%	5%	4%	31%	5%	2%
grade 1 events	29	27	29	192	28	38
	0%	0%	0%	0%	0%	0%
grade 2 events	1206	1177	1175	2768	1169	6009
	2%	2%	2%	3%	2%	9%
grade 3 events	585	589	528	904	550	1368
	1%	1%	1%	1%	1%	2%
grade 4 events	526	626	530	1006	557	1320
	1%	1%	1%	1%	1%	2%
grade 5 events	1760	1892	1698	1896	2169	4209
	3%	4%	3%	2%	4%	6%
grade 6 events	968	1110	930	1120	1134	14247
	2%	2%	1%	1%	2%	22%
grade 7 events	37269	36239	41155	41159	44649	34807
	83%	82%	85%	57%	84%	54%

2.2 Compared Parameters

Parameter	Planned	Actual	Parameter	Planned	Actual
Instrument	ACIS	ACIS	Obspar format version number	6	6
Detector	ACIS-012367	ACIS-012367	Obspar file type	PREDICTED	ACTUAL
Grating	NONE	NONE	Obspar update status	NONE	UPDATED
Data mode	FAINT	FAINT	Number of optional ACIS chips dropped	0	0
Observation mode	POINTING	POINTING	On-chip summing requested	N	N
Pointing RA	16.263510	16.18460712671761	Subarray requested	NONE	NONE
Pointing Dec	-71.924946	-71.91256772831061	Alternating exposures requested	N	N
Pointing Roll	123.003207	123.1368846692427	Primary exposure time	0.000000	3.2
Window start time	107740864.184000	107740864.184000			
Window stop time	110246464.184000	110246464.184000			
SIM focus pos (mm)	-0.782348	-0.7809083437167272			
SIM defocus (mm)	0	0.001439871863259334			
SIM translation stage pos (mm)	-233.592463	-233.5874344608287			
SIM translation stage offset (mm)	0	-0.005018542100998502			
Observation start time	108144140.184000	108143666.6088			
Observation start date	2001-06-05T16:01:16	2001-06-05T15:54:26			
Observation end time	108151895.184000	108152121.83413			
Observation end date	2001-06-05T18:10:31	2001-06-05T18:15:21			
Read mode	TIMED	TIMED			

2.3 Aspect



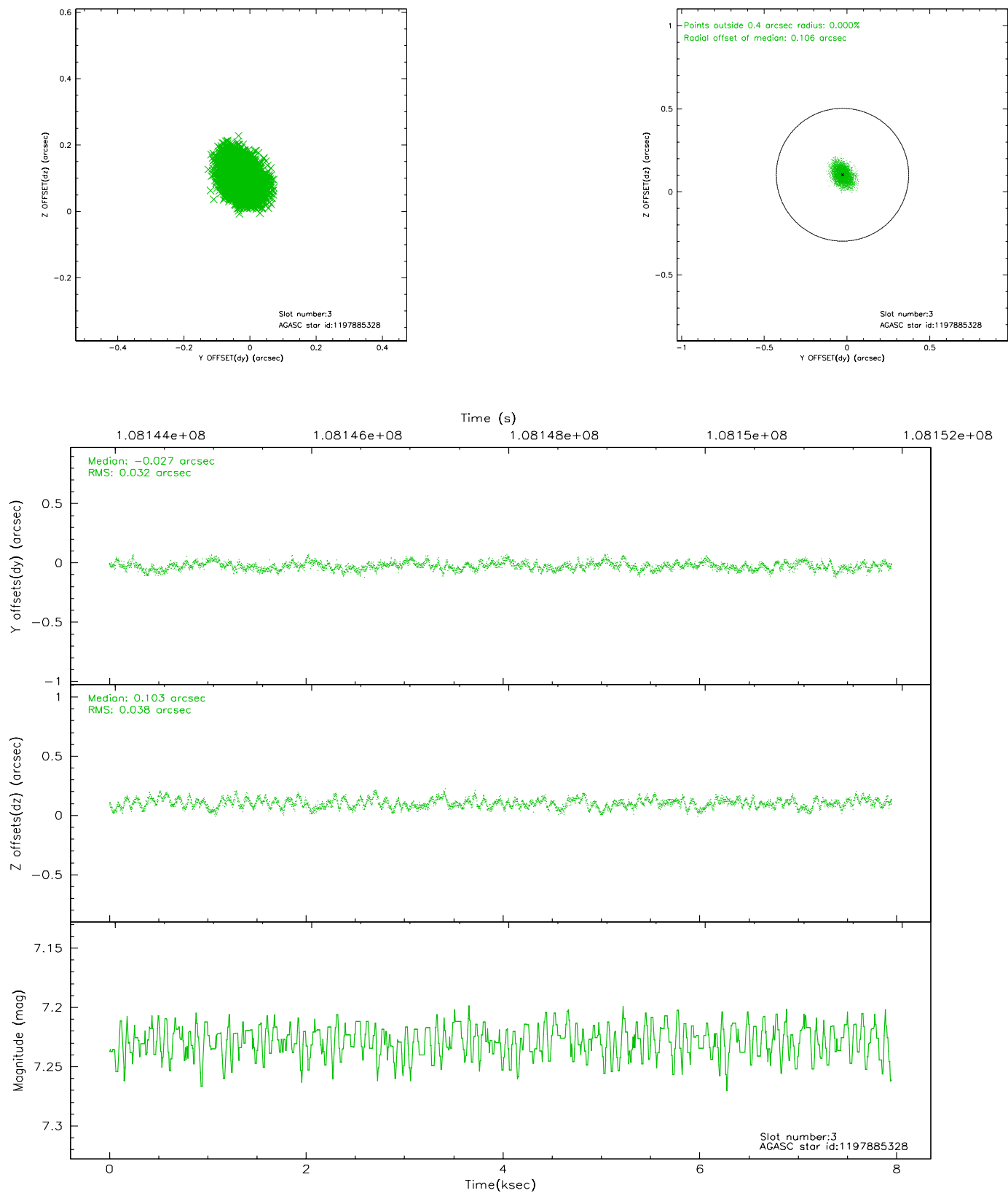


Slot Statistics

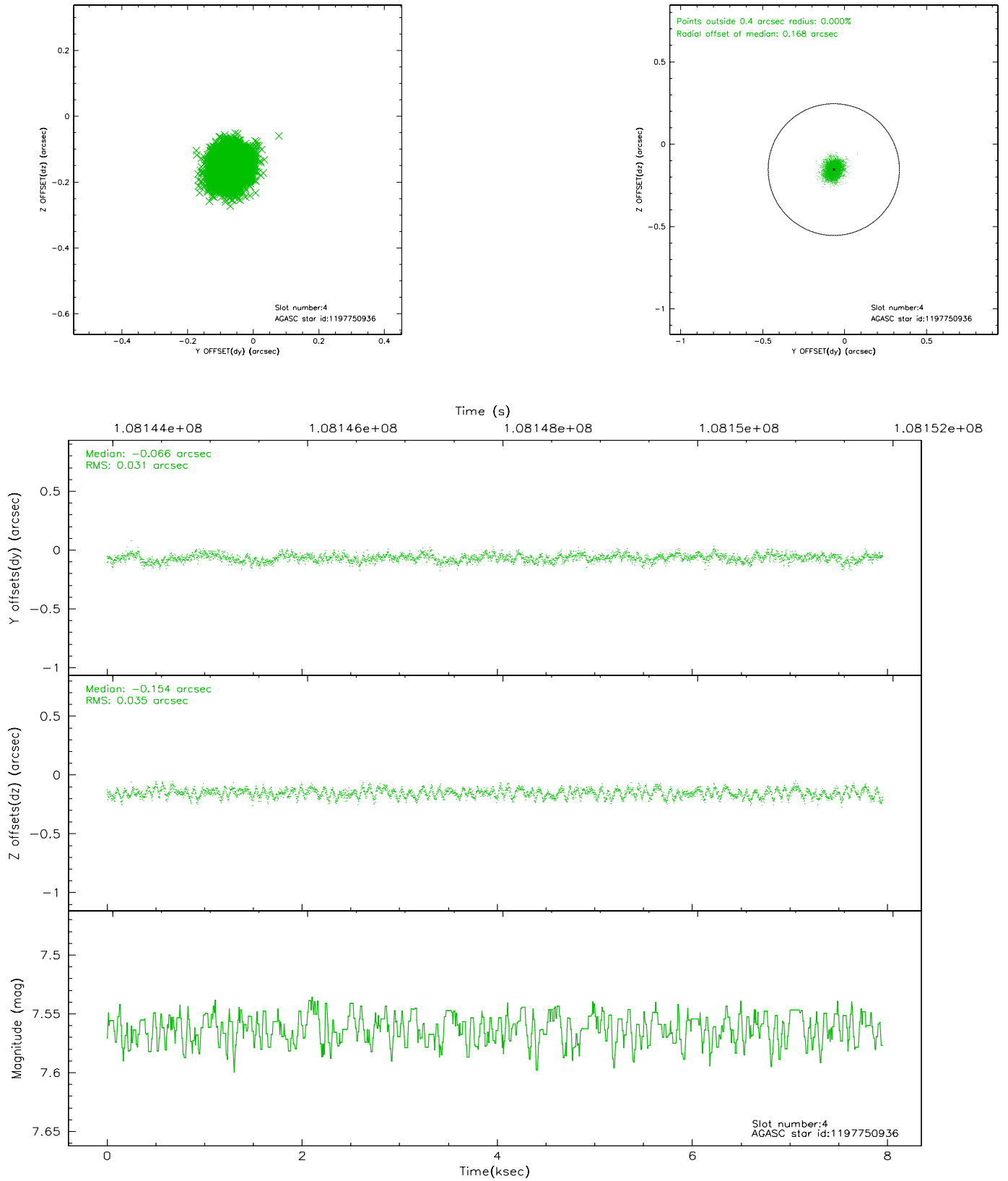
slot	status	id	mag	n_pts	med_dy	med_dz	dr1	dr2	ra	dec	mean_y	mean_z
0	FID	ACIS-I-2	7.15	1937	-0.025	-0.041	0.009	0.015	0.000000	0.000000	-756.35	-835.57
1	FID	ACIS-I-4	7.18	1938	-0.051	0.034	0.005	0.010	0.000000	0.000000	2157.35	1070.34
2	FID	ACIS-I-5	7.23	1939	-0.025	0.076	0.009	0.014	0.000000	0.000000	-1809.28	1069.02
3	GUIDE	1197885328	7.23	3879	-0.027	0.103	0.054	0.087	16.283090	-71.733943	565.64	-392.41
4	GUIDE	1197750936	7.56	3879	-0.066	-0.154	0.051	0.079	15.387940	-71.549550	1671.67	105.03
5	GUIDE	1197884536	8.50	3878	0.089	0.001	0.062	0.098	17.160729	-71.835289	-282.39	-1015.53
6	GUIDE	1197884712	8.31	3877	0.034	-0.045	0.052	0.084	16.087398	-72.252690	-883.59	805.12
7	GUIDE	1197878768	9.61	3876	-0.029	0.091	0.110	0.178	16.656786	-71.304581	1625.54	-1595.20

2.4 Star Slots

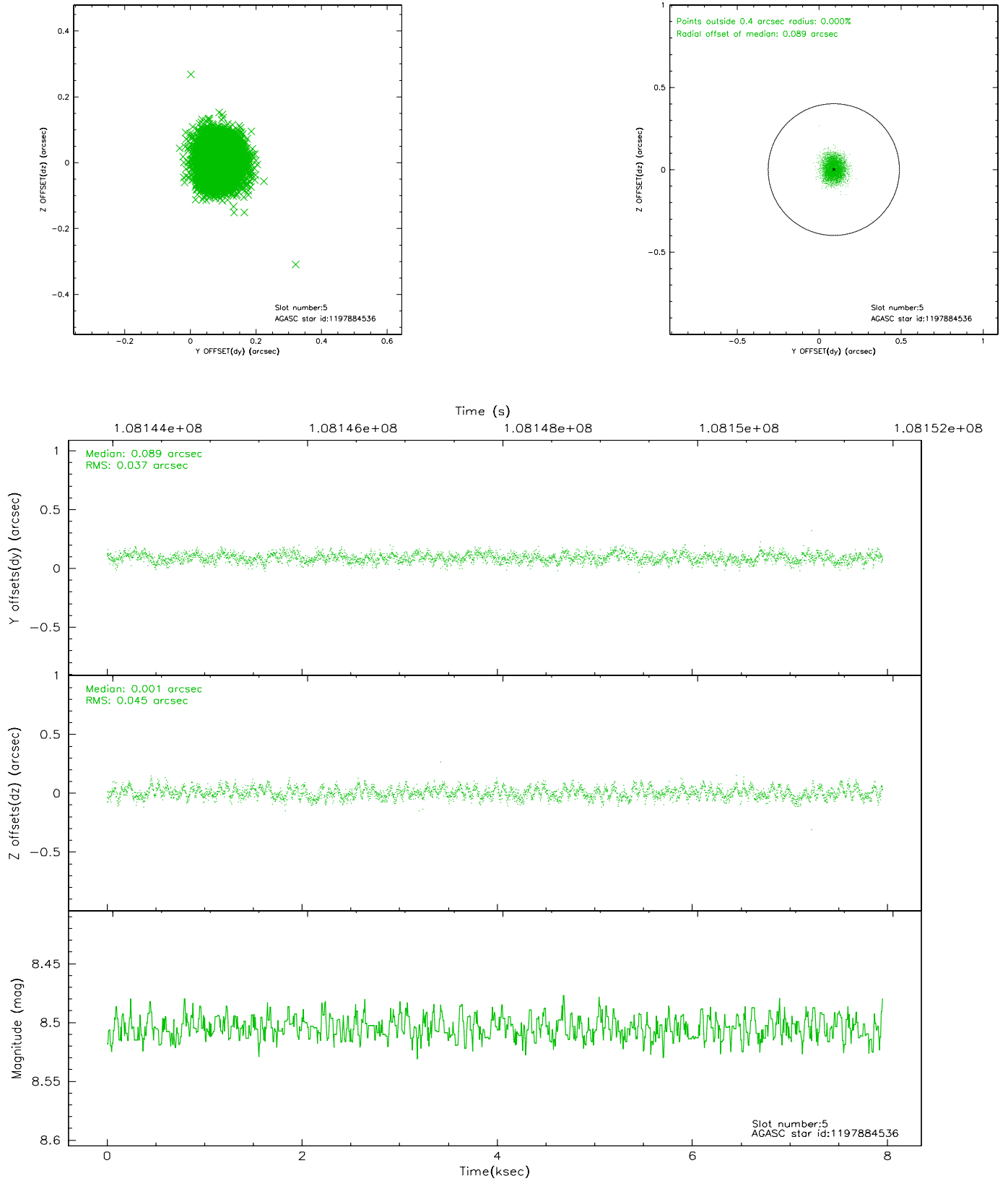
2.4.1 Slot 3



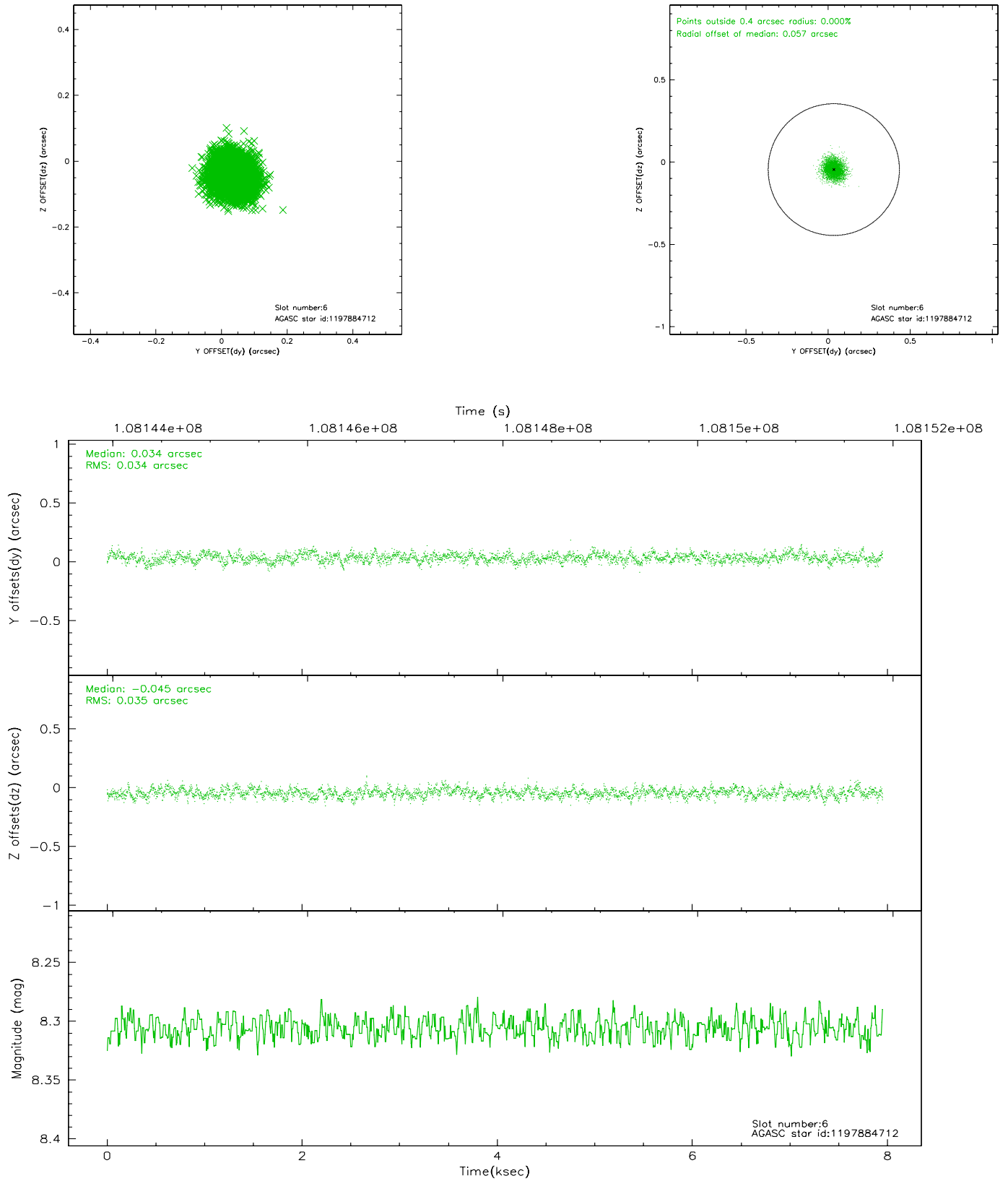
2.4.2 Slot 4



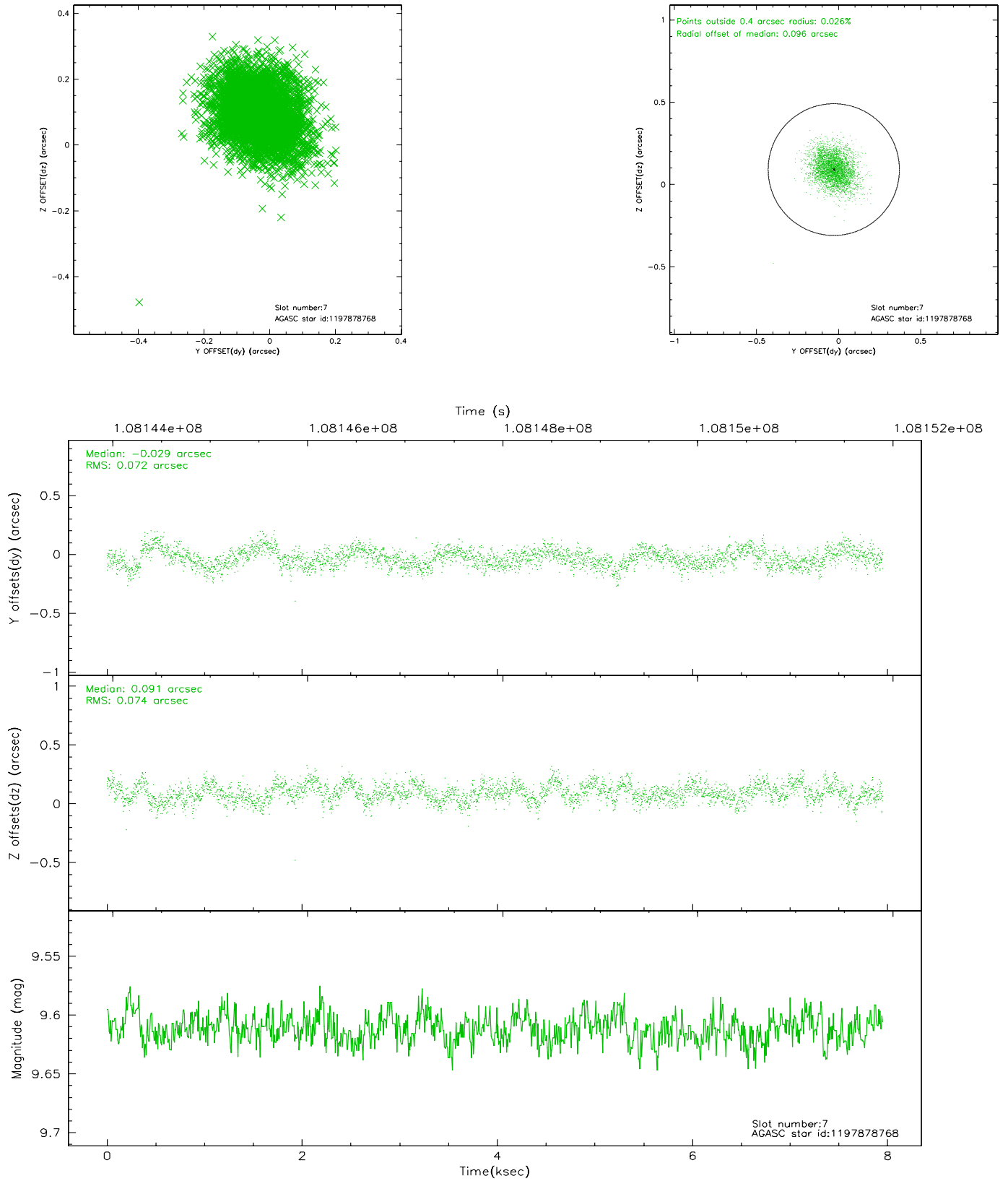
2.4.3 Slot 5



2.4.4 Slot 6

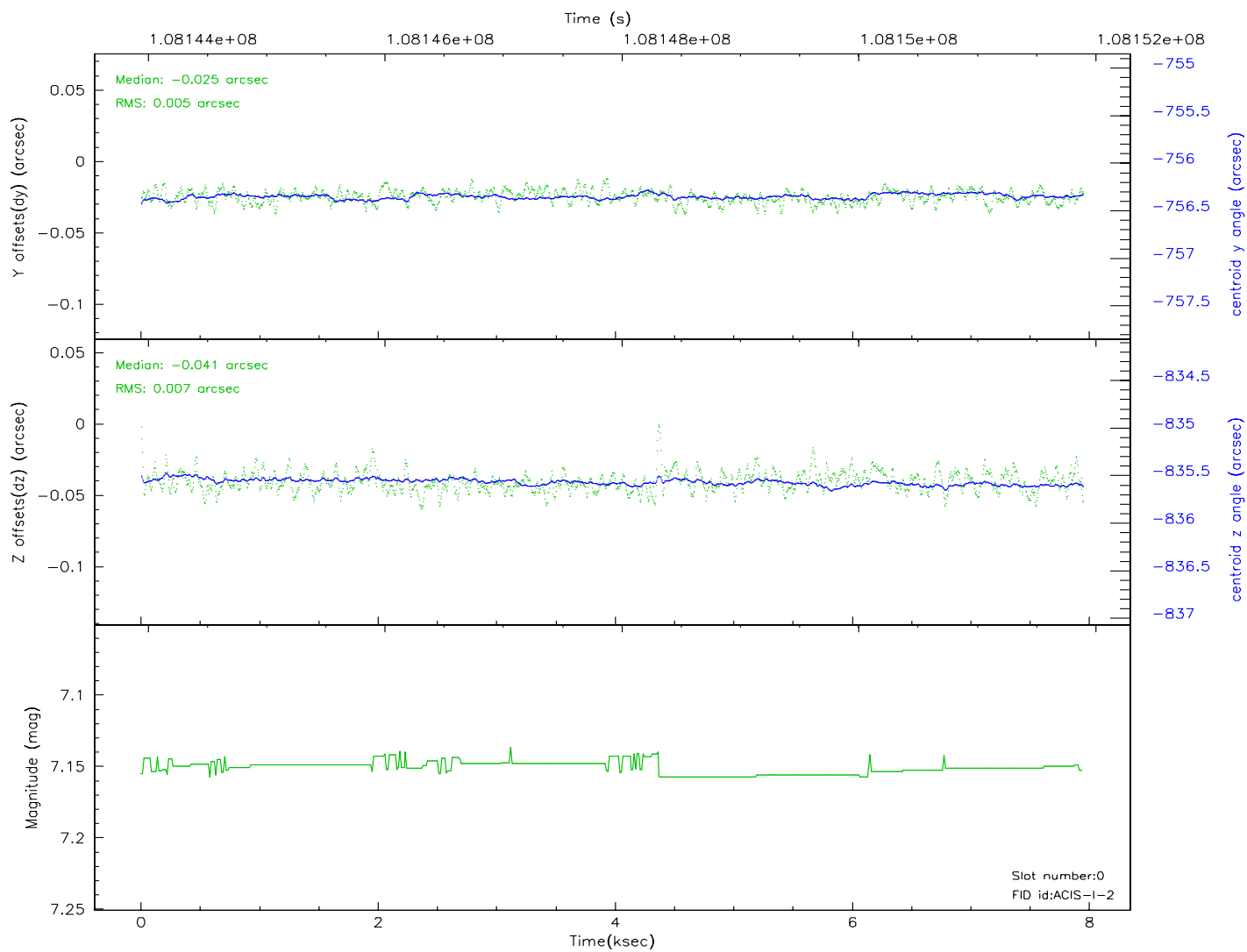
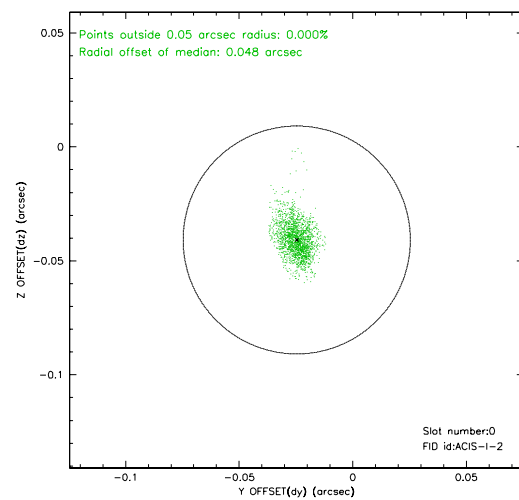
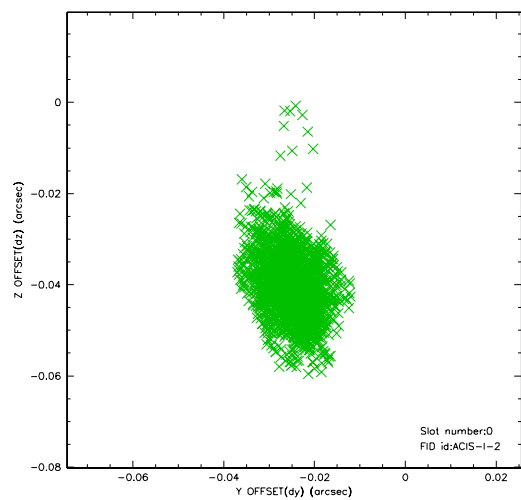


2.4.5 Slot 7

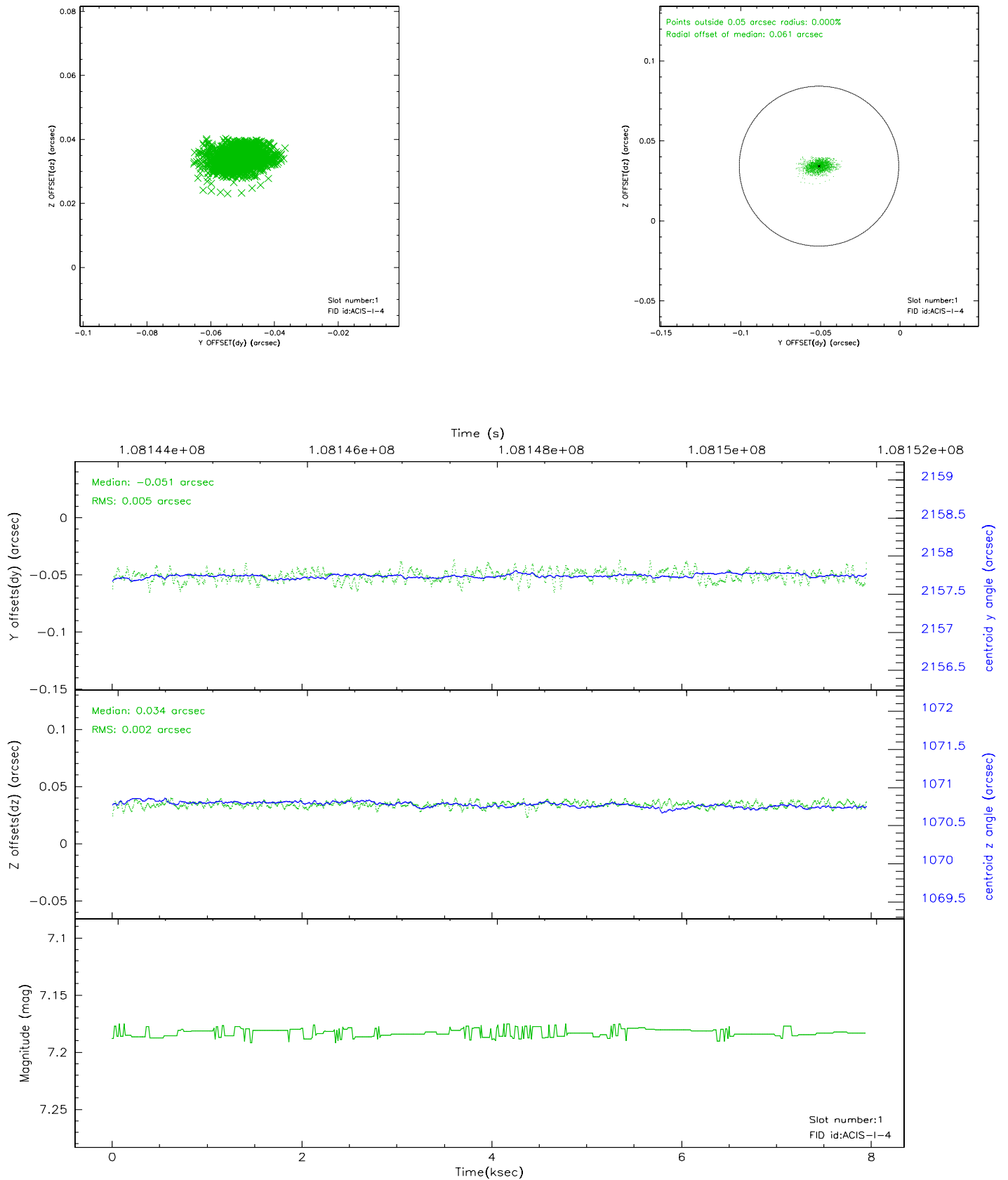


2.5 FID Slots

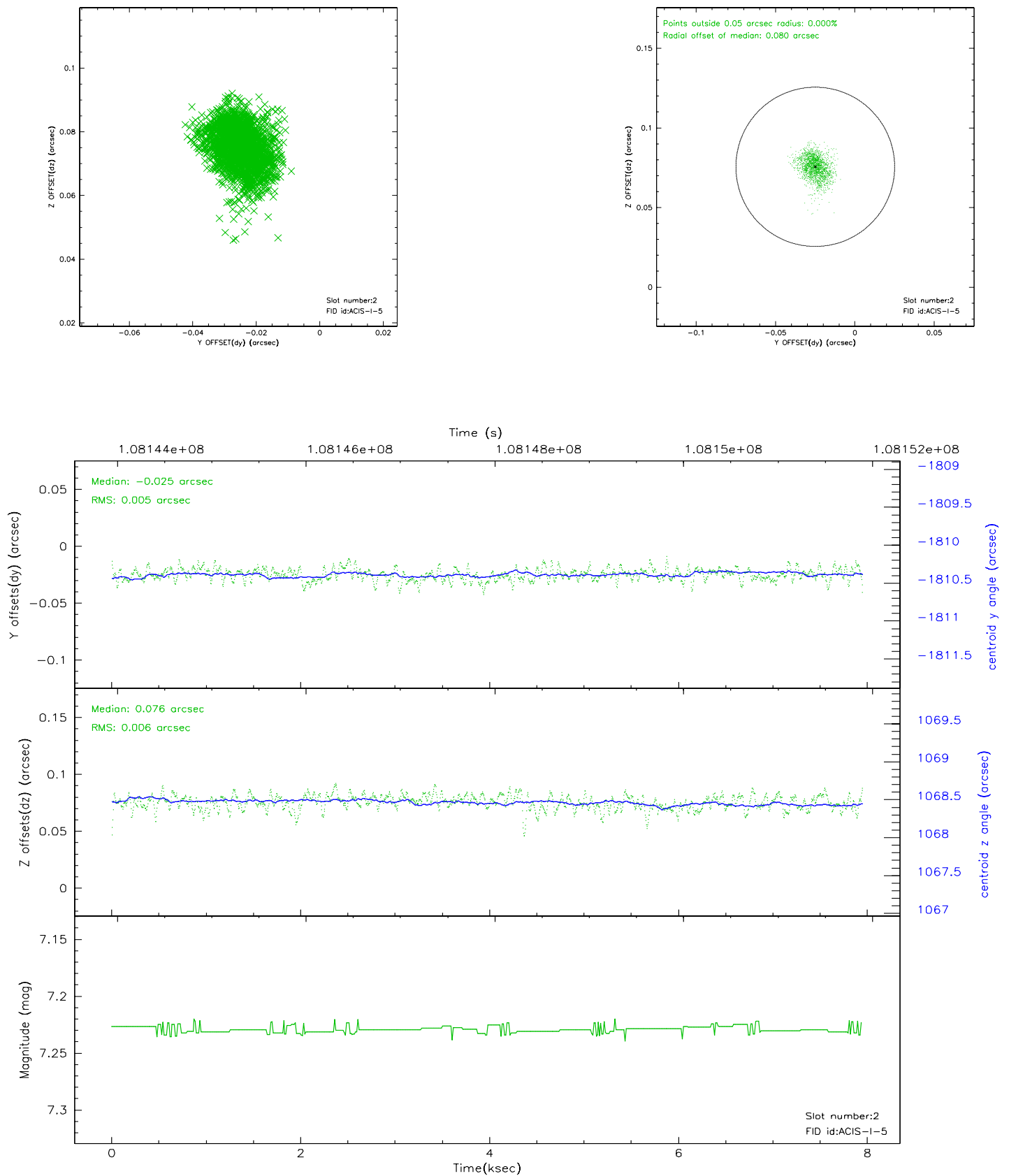
2.5.1 Slot 0



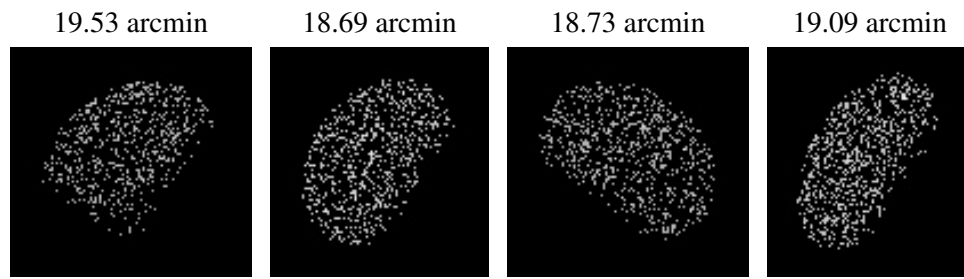
2.5.2 Slot 1



2.5.3 Slot 2



3 Point Sources



A Summary

A.1 Status

V&V Scientist	Beth Sundheim
V&V Date (YYYY-MM-DD)	2006.11.27
V&V Edition	1
V&V Disposition and Status	OK
V&V Charge Time	7.5

A.2 Comments

Window constraint OK.