

V&V Reference Report

L2 ASCDS Version : 8.4.5

Observation 15267 - L2 Version 1
Chandra X-Ray Center

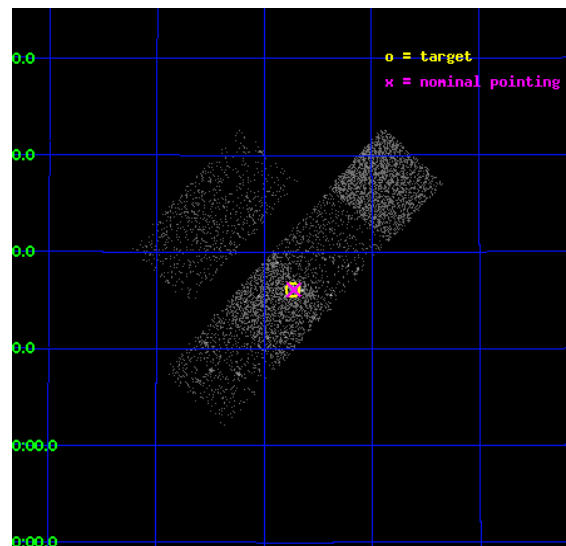
L2 Processing Date : Aug 17 2012

Contents

1	Front	2
2	OBI Primary	3
2.1	OBI	3
2.1.1	Images	3
2.1.2	Bias	3
2.1.3	Parameters	4
2.1.4	Events	4
2.2	Compared Parameters	5
2.3	Aspect	6
2.4	Star Slots	9
2.4.1	Slot 3	9
2.4.2	Slot 4	10
2.4.3	Slot 5	11
2.4.4	Slot 6	12
2.4.5	Slot 7	13
2.5	FID Slots	14
2.5.1	Slot 0	14
2.5.2	Slot 1	15
2.5.3	Slot 2	16
3	OBI Secondary	17
3.1	OBI	17
3.1.1	Images	17
3.1.2	Bias	17
3.1.3	Parameters	18
3.1.4	Events	18
A	Summary	19
A.1	Status	19
A.2	Comments	19

1 Front

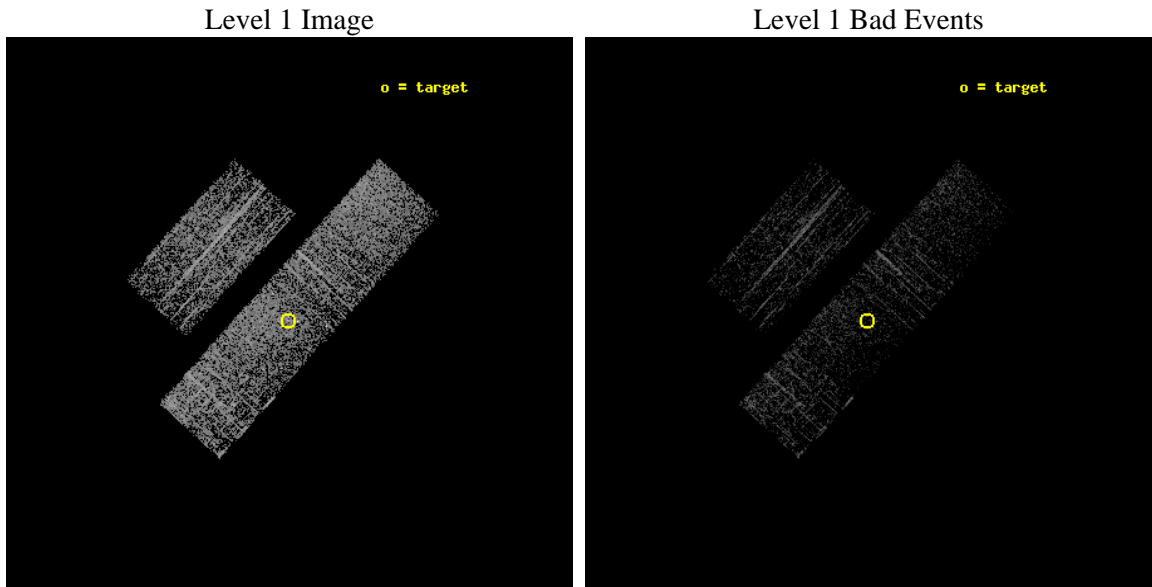
seq_num	601018	Sequence number
obs_id	15267	Observation id
title	M31*: A Resolved Low-Luminosity Accretion Flow Surrounding a Newly Active LLAGN (ACIS/GTO)	Proposal title
observer	Professor Gordon Garmire	Principal investigator
object	M31*	Source name
dtcycle	0	
cycle	P	events are from which exps? P[rimary] S[econdar
ra_targ	10.685	Observer's specified target RA [deg]
dec_targ	41.268972	Observer's specified target Dec [deg]
ra_nom	10.681046426912	Nominal RA [deg]
dec_nom	41.268460921035	Nominal Dec [deg]
roll_nom	132.15924779689	Nominal Roll [deg]
revision	1	Processing version of data
ontime	2637.6777898073	Sum of GTIs [s]
livetime	415.23410905408	Livetime [s]
ontime2	2637.6777898073	Sum of GTIs [s]
ontime3	2637.6777898073	Sum of GTIs [s]
ontime5	2637.6777898073	Sum of GTIs [s]
ontime6	2637.6777898073	Sum of GTIs [s]
ontime7	2637.6777898073	Sum of GTIs [s]
ontime8	2637.6777898073	Sum of GTIs [s]
l2events	8103	Number of level 2 events



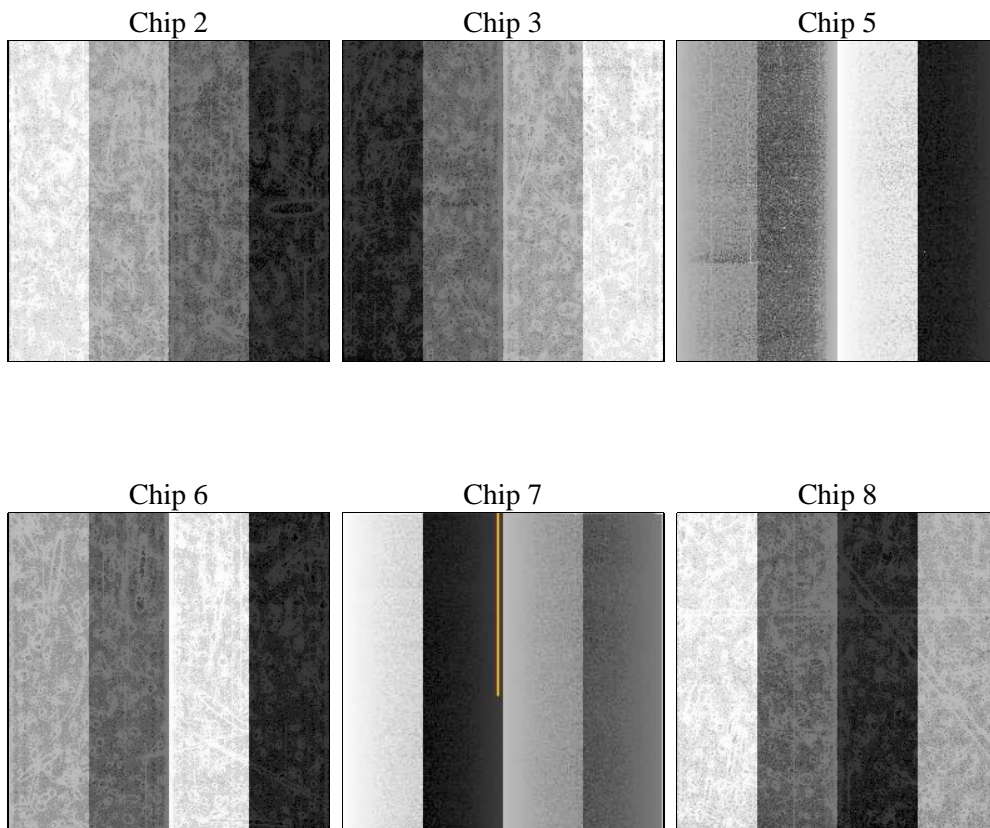
2 OBI Primary

2.1 OBI

2.1.1 Images



2.1.2 Bias



2.1.3 Parameters

obi_num	0	Obi number	sched_exp_time	14000.000000	[s] Scheduled observation exposure time
ascdsver	8.4.5	Processing system revision	ontime	2637.6777898073	Sum of GTIs [s]
caldsver	4.5.1.1	 	ontime2	2637.6777898073	Sum of GTIs [s]
date	2012-08-17T16:45:17	Date and time of file creation	ontime3	2637.6777898073	Sum of GTIs [s]
revision	1	Processing version of data	ontime5	2637.6777898073	Sum of GTIs [s]
			ontime6	2637.6777898073	Sum of GTIs [s]
			ontime7	2637.6777898073	Sum of GTIs [s]
			ontime8	2637.6777898073	Sum of GTIs [s]
			l1events	45449	Number of level 1 events

2.1.4 Events

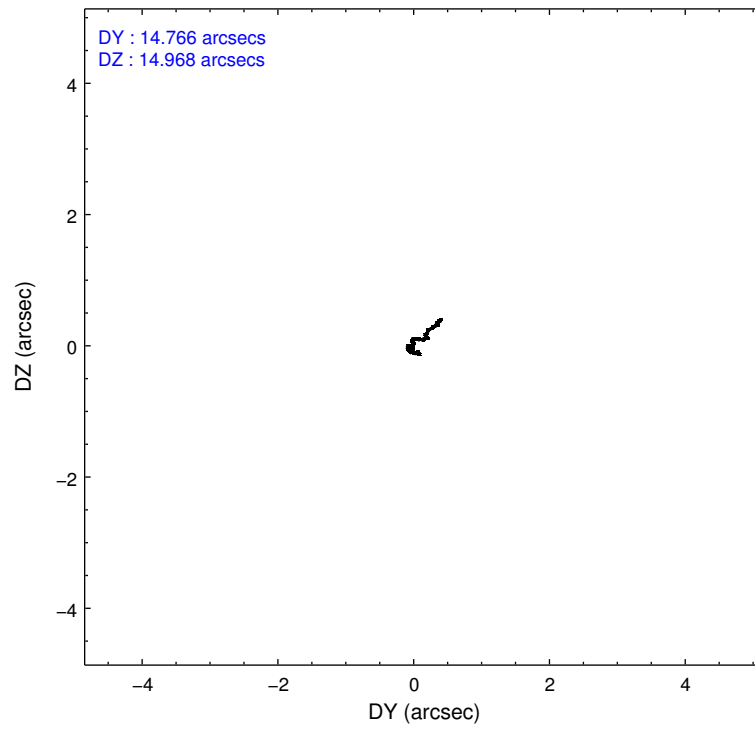
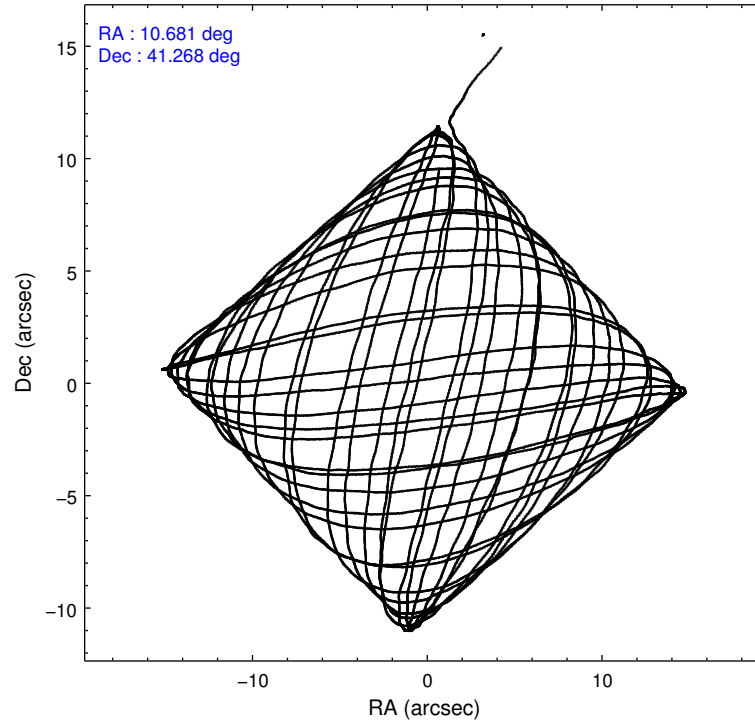
	ccd 2	ccd 3	ccd 5	ccd 6	ccd 7	ccd 8
level 1 events	7235	6091	7612	7175	8098	9238
rejected events	6715	5528	4850	6342	4815	7741
rejected %	92%	90%	63%	88%	59%	83%

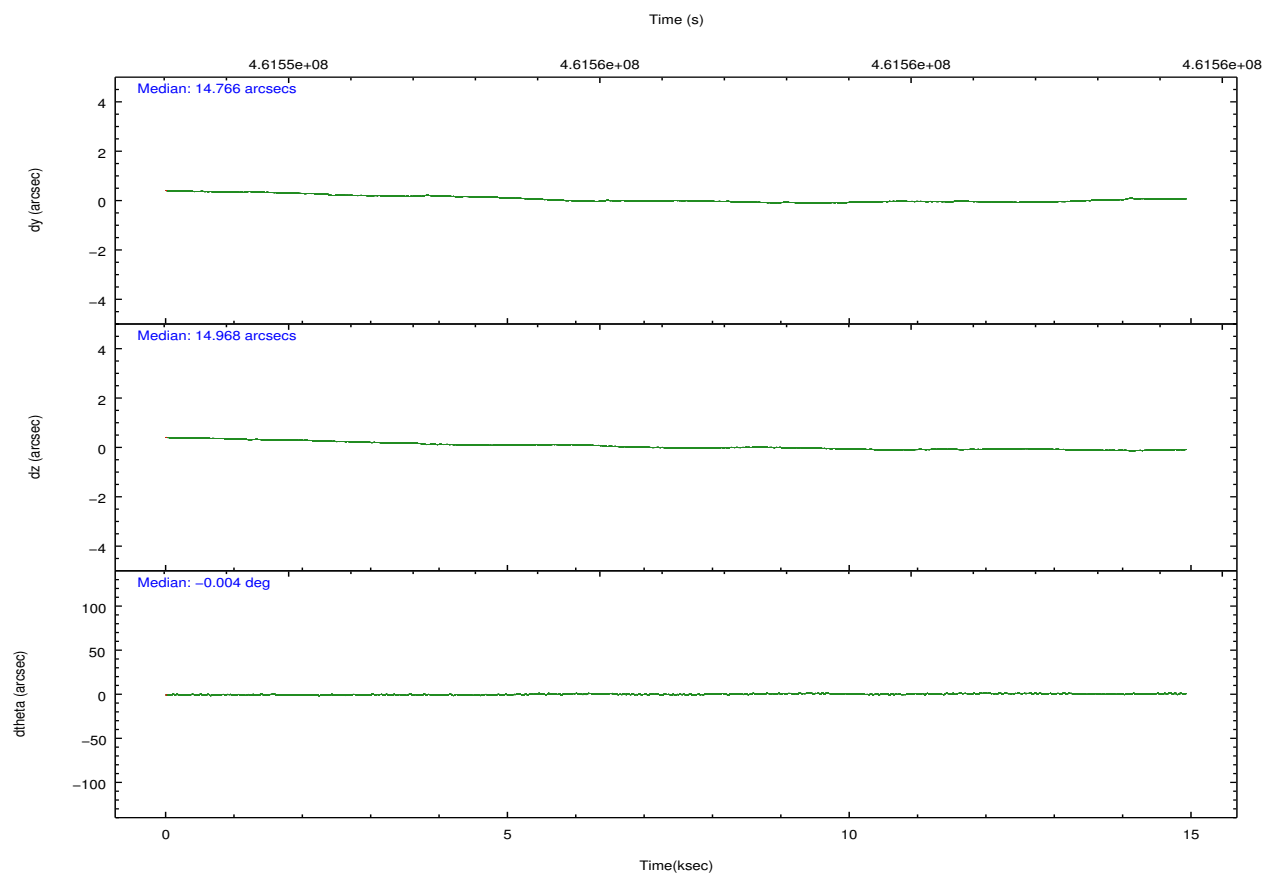
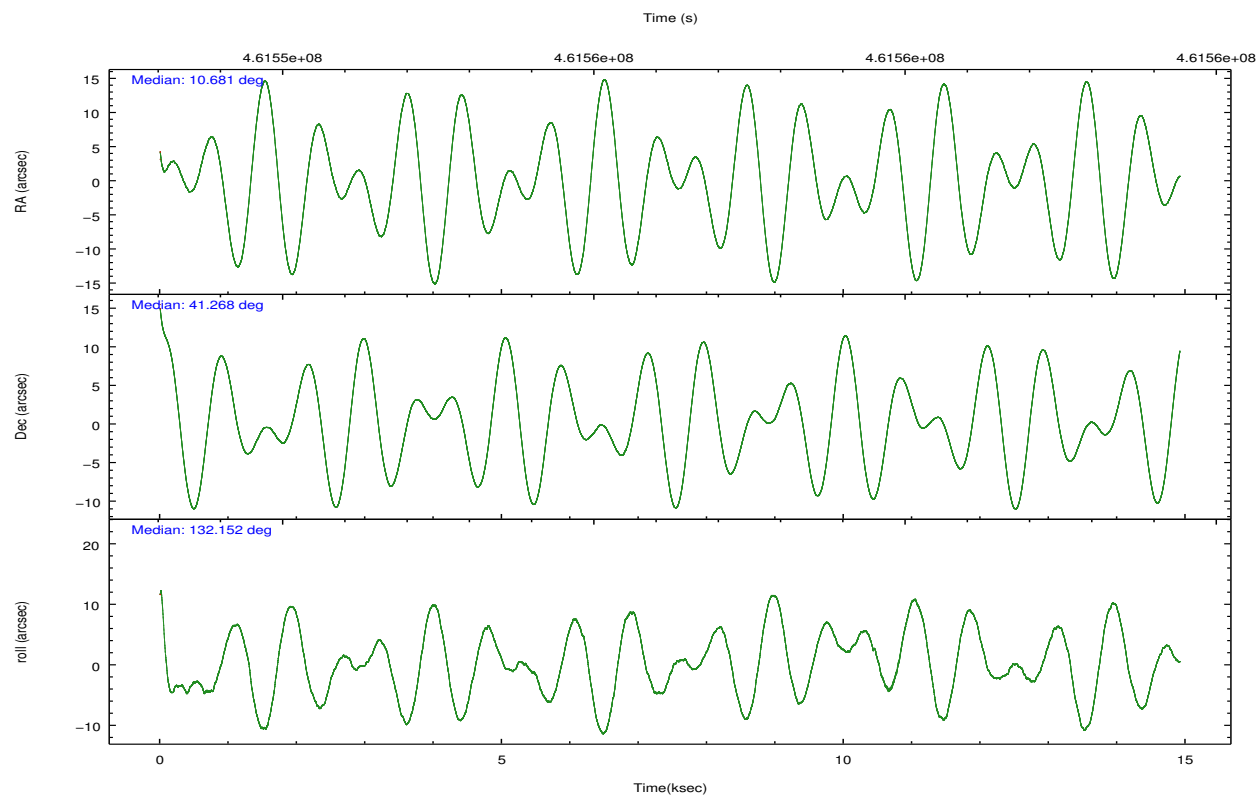
	ccd 2	ccd 3	ccd 5	ccd 6	ccd 7	ccd 8
grade 0 events	144	162	145	343	536	397
	1%	2%	1%	4%	6%	4%
grade 1 events	2	2	10	2	7	6
	0%	0%	0%	0%	0%	0%
grade 2 events	142	150	804	189	816	389
	1%	2%	10%	2%	10%	4%
grade 3 events	55	67	128	87	340	147
	0%	1%	1%	1%	4%	1%
grade 4 events	66	65	102	78	330	142
	0%	1%	1%	1%	4%	1%
grade 5 events	254	281	605	260	629	393
	3%	4%	7%	3%	7%	4%
grade 6 events	115	119	1586	138	1266	425
	1%	1%	20%	1%	15%	4%
grade 7 events	6457	5245	4232	6078	4174	7339
	89%	86%	55%	84%	51%	79%

2.2 Compared Parameters

Parameter	Planned	Actual	Parameter	Planned	Actual
Instrument	ACIS	ACIS	Obspar format version number	7	7
Detector	ACIS-235678	ACIS-235678	Obspar file type	PREDICTED	ACTUAL
Grating	NONE	NONE	Obspar update status	NONE	UPDATED
Data mode	FAINT	FAINT	CCD I0 on	N	N
Observation mode	POINTING	POINTING	CCD I1 on	N	N
[deg] Pointing RA	10.715803	10.68104642691219	CCD I2 on	Y	Y
[deg] Pointing Dec	41.260437	41.26846092103516	CCD I3 on	Y	Y
[deg] Pointing Roll	131.979690	132.1592477968905	CCD S0 on	N	N
[mm] SIM focus pos	-0.684267	-0.6828225247311905	CCD S1 on	O2	Y
[mm] SIM defocus	0	0.001444936568705701	CCD S2 on	Y	Y
[mm] SIM translation stage pos	-190.132523	-190.1400660498719	CCD S3 on	Y	Y
[mm] SIM translation stage offset	0	0.00754346686406393	CCD S4 on	O1	Y
[s] Observation start time (MET)	461549694.184000	461548110.09312	CCD S5 on	N	N
Observation start date	2012-08-17T00:13:47	2012-08-16T23:48:30	Number of optional ACIS chips dropped	0	0
[s] Observation end time (MET)	461563694.184000	461564842.19401	On-chip summing requested	N	N
Observation end date	2012-08-17T04:07:07	2012-08-17T04:27:22	Subarray requested	NONE	NONE
Read mode	TIMED	TIMED	Alternating exposures requested	Y	Y
			[s] Primary exposure time	0.600000	0.6
			[s] Secondary exposure time	0.000000	3.2
			Duty cycle	5	5

2.3 Aspect



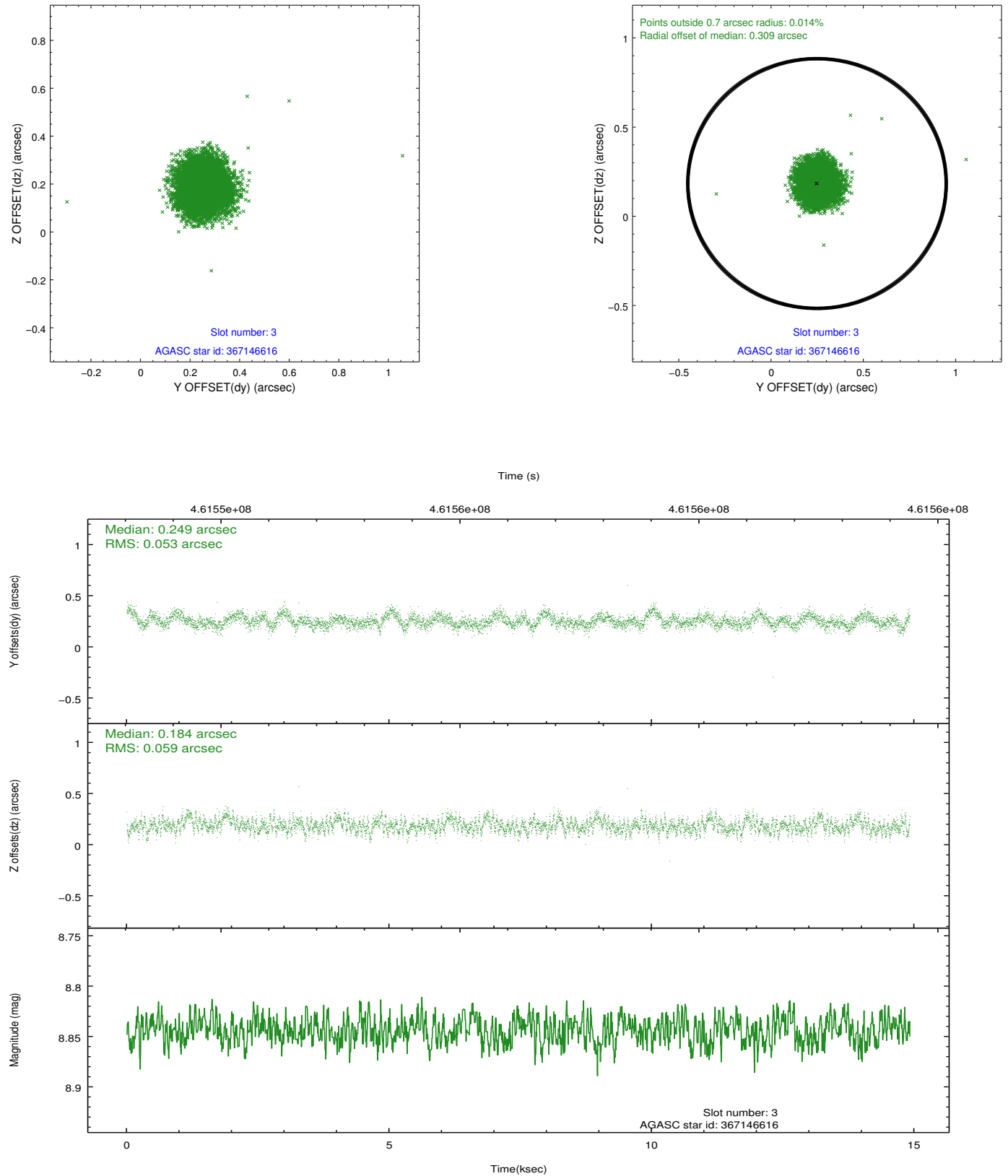


Slot Statistics

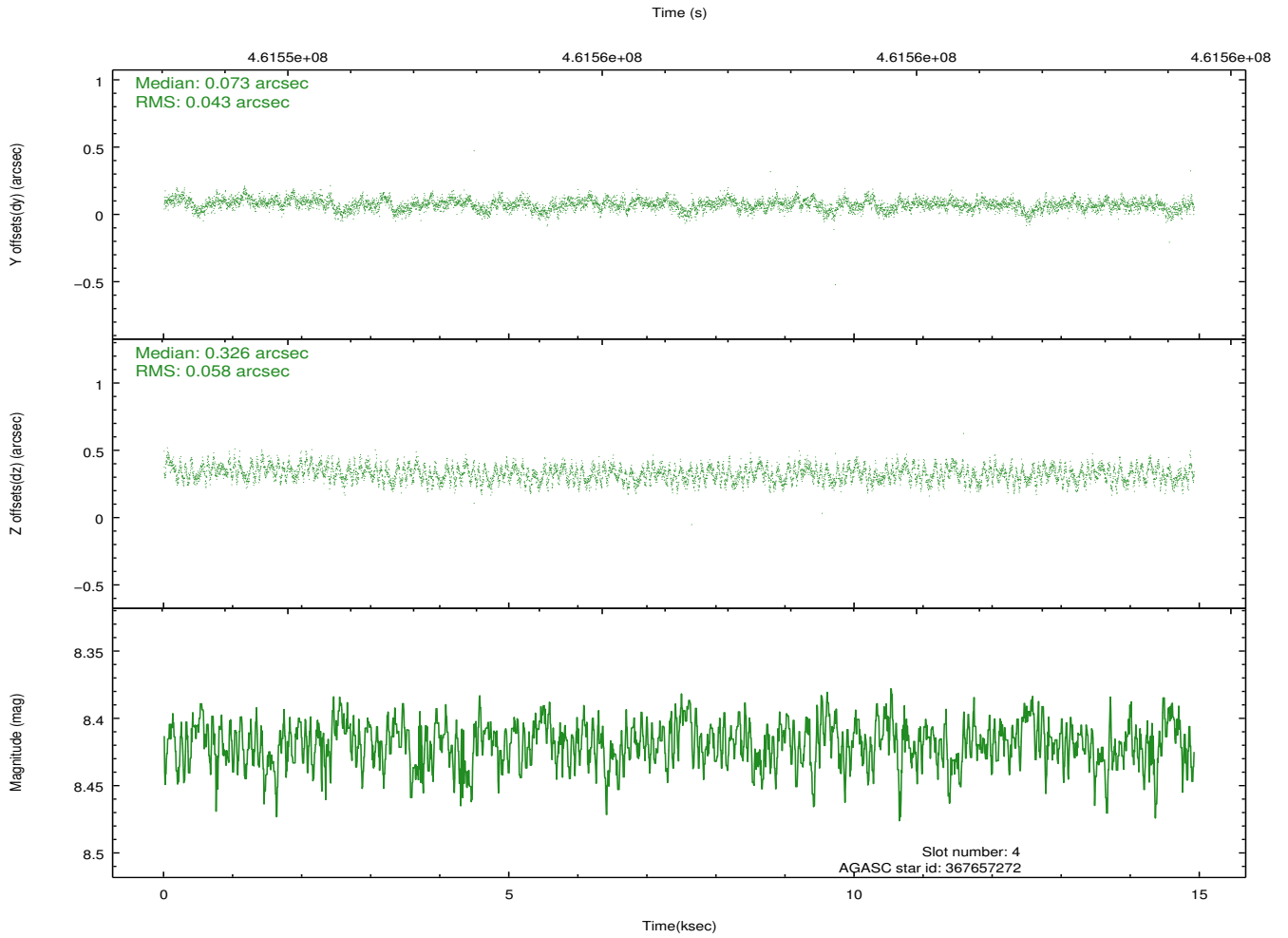
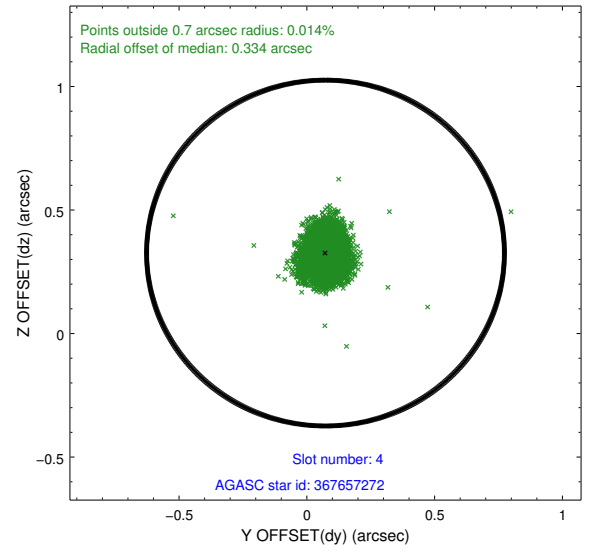
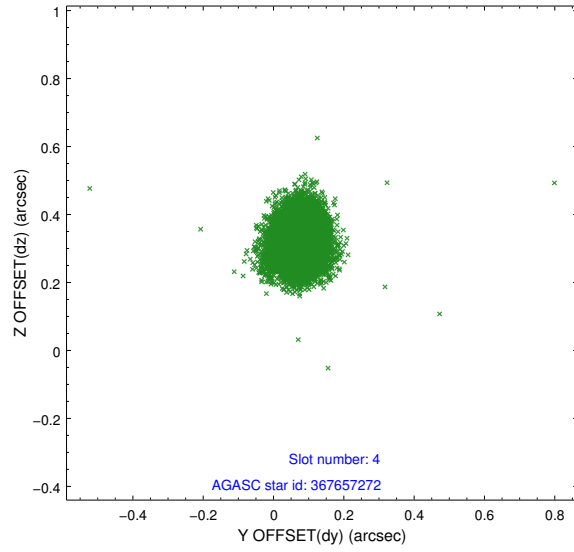
slot	status	id	mag	n_pts	med_dy	med_dz	dr1	dr2	ra	dec	mean_y	mean_z
0	FID	ACIS-S-2	6.91	3638	-0.122	-0.030	0.009	0.023	0.000000	0.000000	-767.91	-1736.44
1	FID	ACIS-S-4	7.00	3639	0.276	0.067	0.008	0.019	0.000000	0.000000	2145.61	171.84
2	FID	ACIS-S-5	7.03	3639	-0.186	-0.028	0.010	0.032	0.000000	0.000000	-1820.44	165.74
3	GUIDE	367146616	8.84	7272	0.249	0.184	0.084	0.134	11.418645	41.190163	-1455.21	-1251.08
4	GUIDE	367657272	8.42	7275	0.073	0.326	0.077	0.120	11.834471	41.298907	-1905.82	-2354.58
5	GUIDE	367663272	9.28	7236	-0.106	-0.057	0.089	0.149	10.656279	41.699429	1282.26	-937.00
6	GUIDE	367674552	8.85	7249	-0.128	0.054	0.079	0.127	11.016238	41.570845	290.82	-1349.66
7	GUIDE	367148872	7.22	7275	-0.088	-0.507	0.068	0.112	10.505940	40.688258	-1148.04	1803.31

2.4 Star Slots

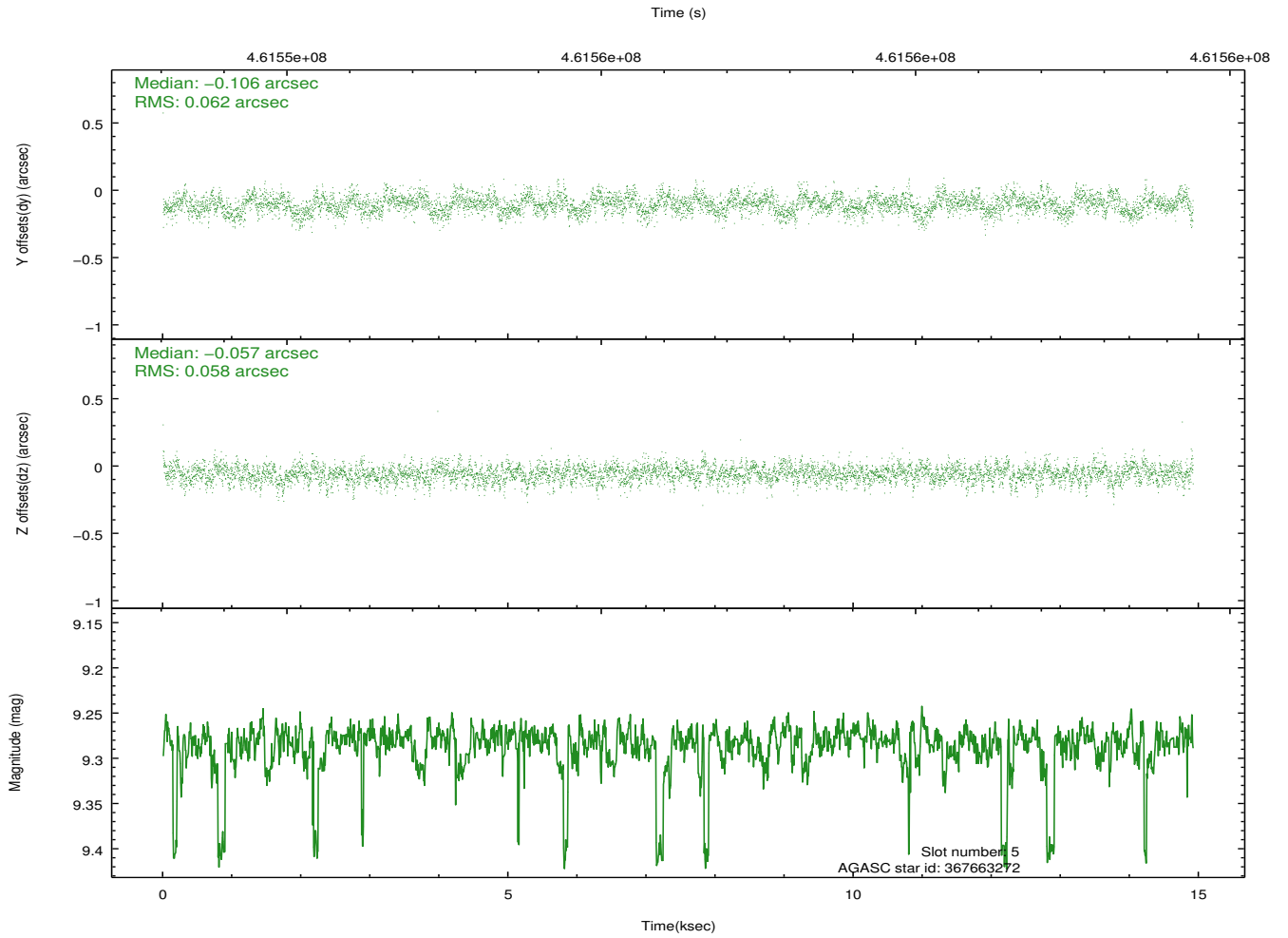
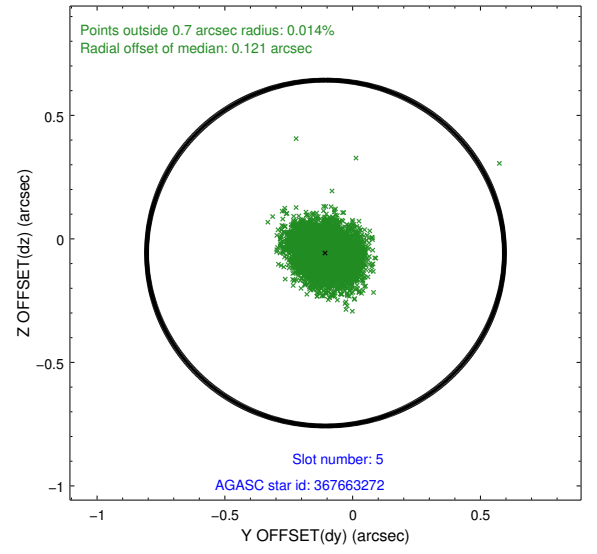
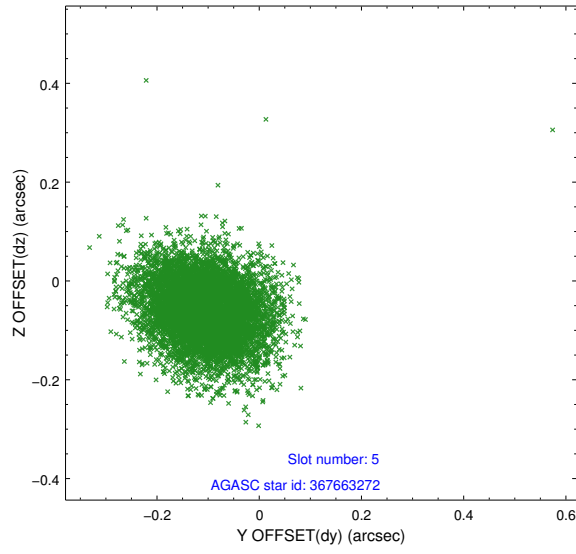
2.4.1 Slot 3



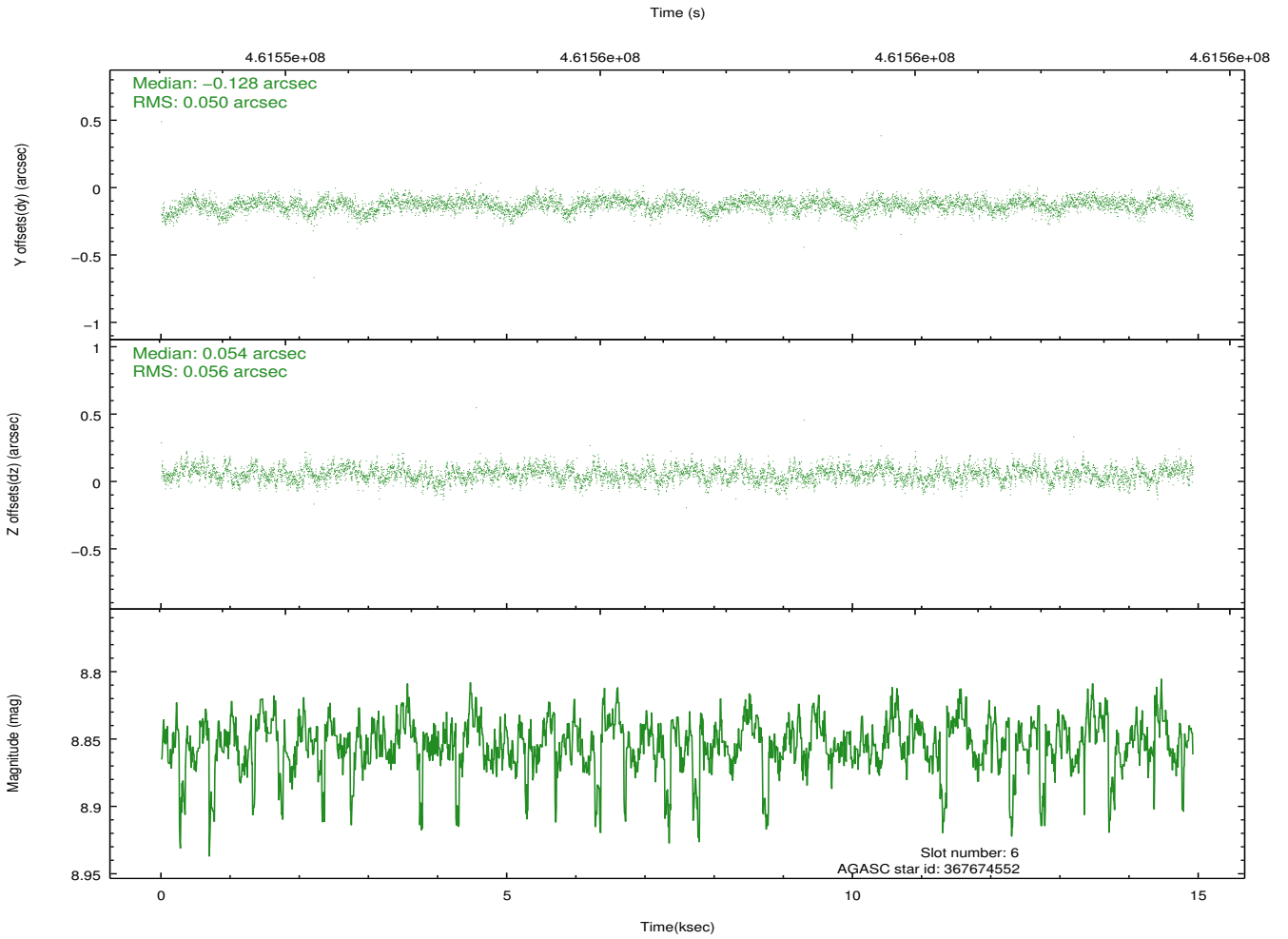
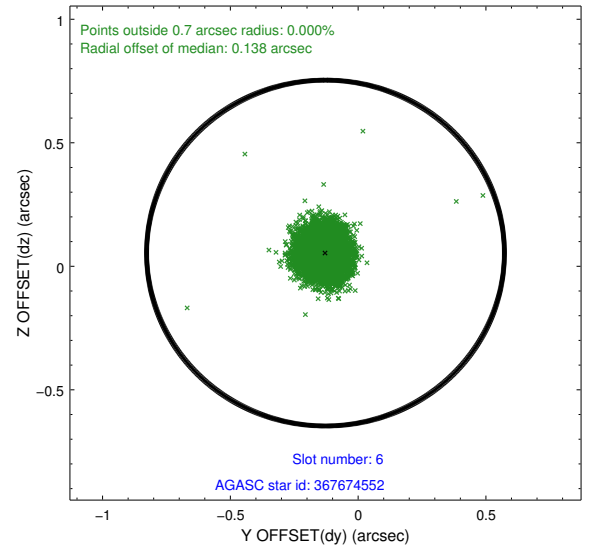
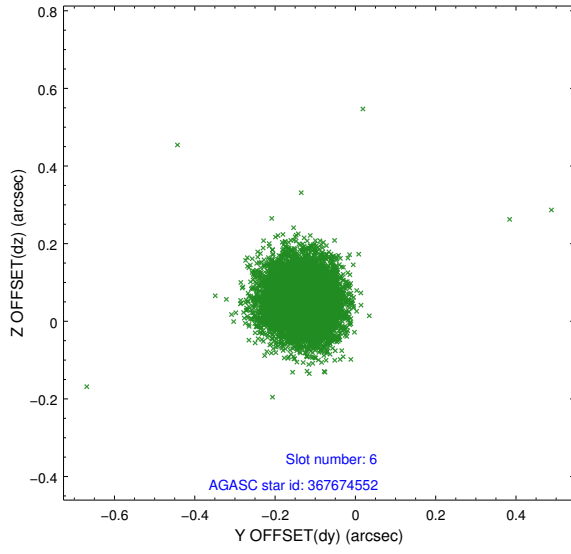
2.4.2 Slot 4



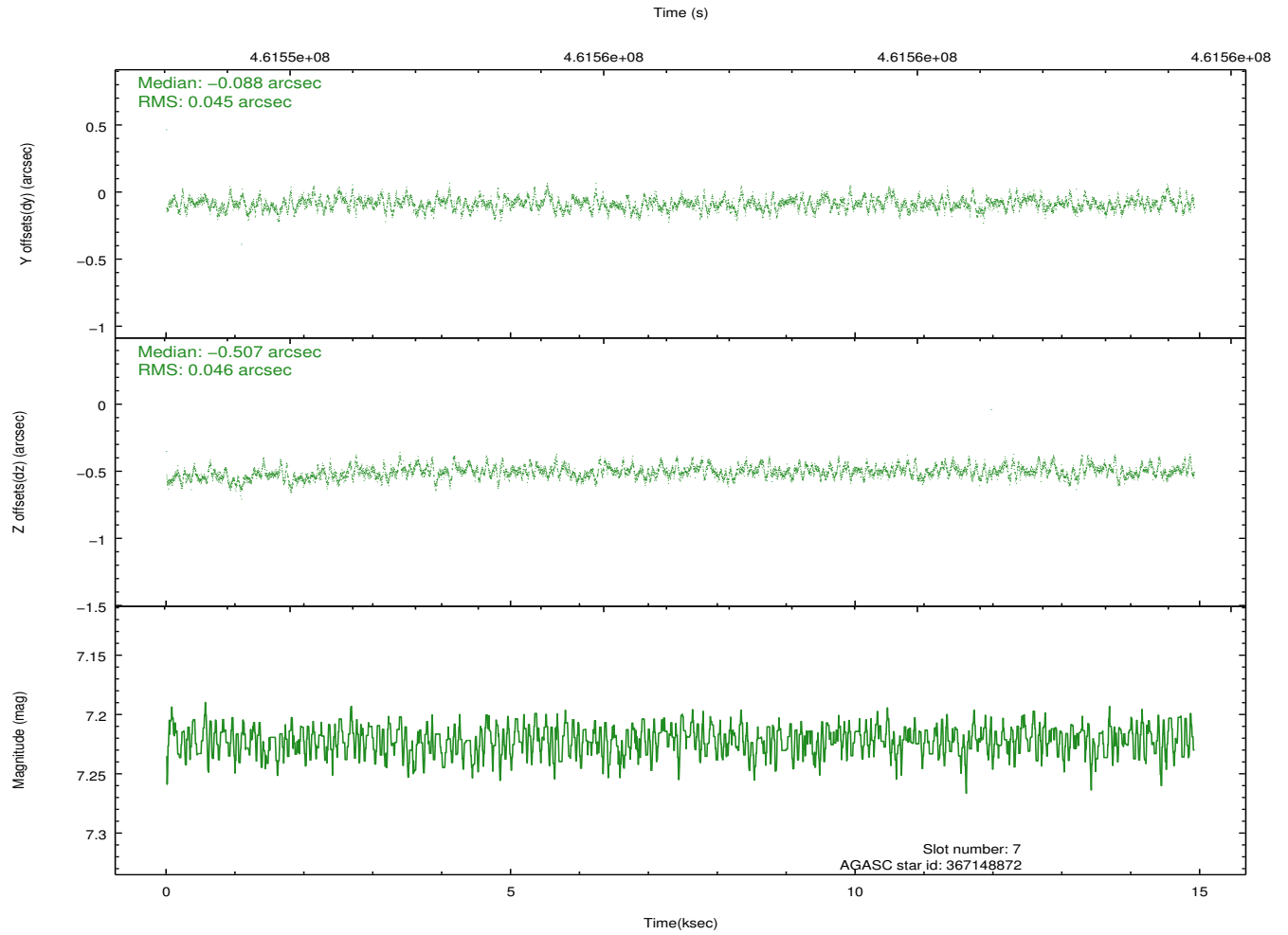
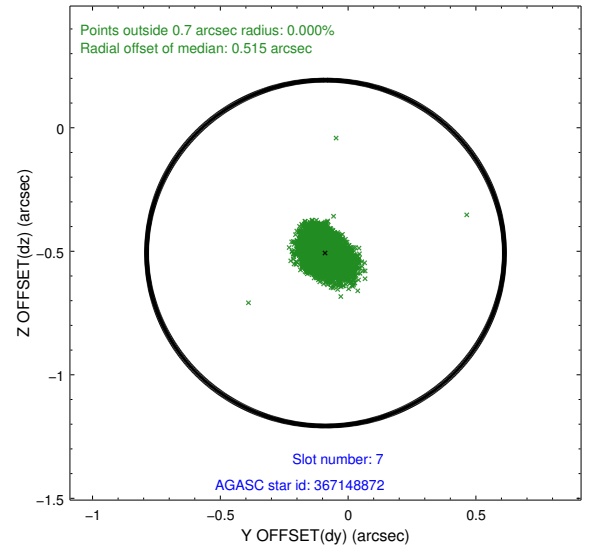
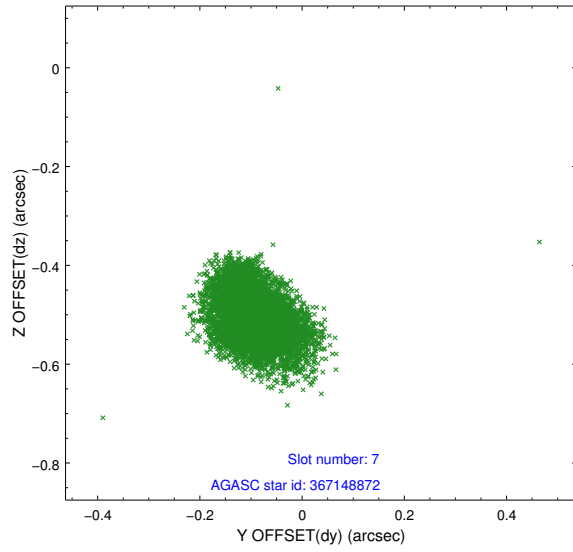
2.4.3 Slot 5



2.4.4 Slot 6

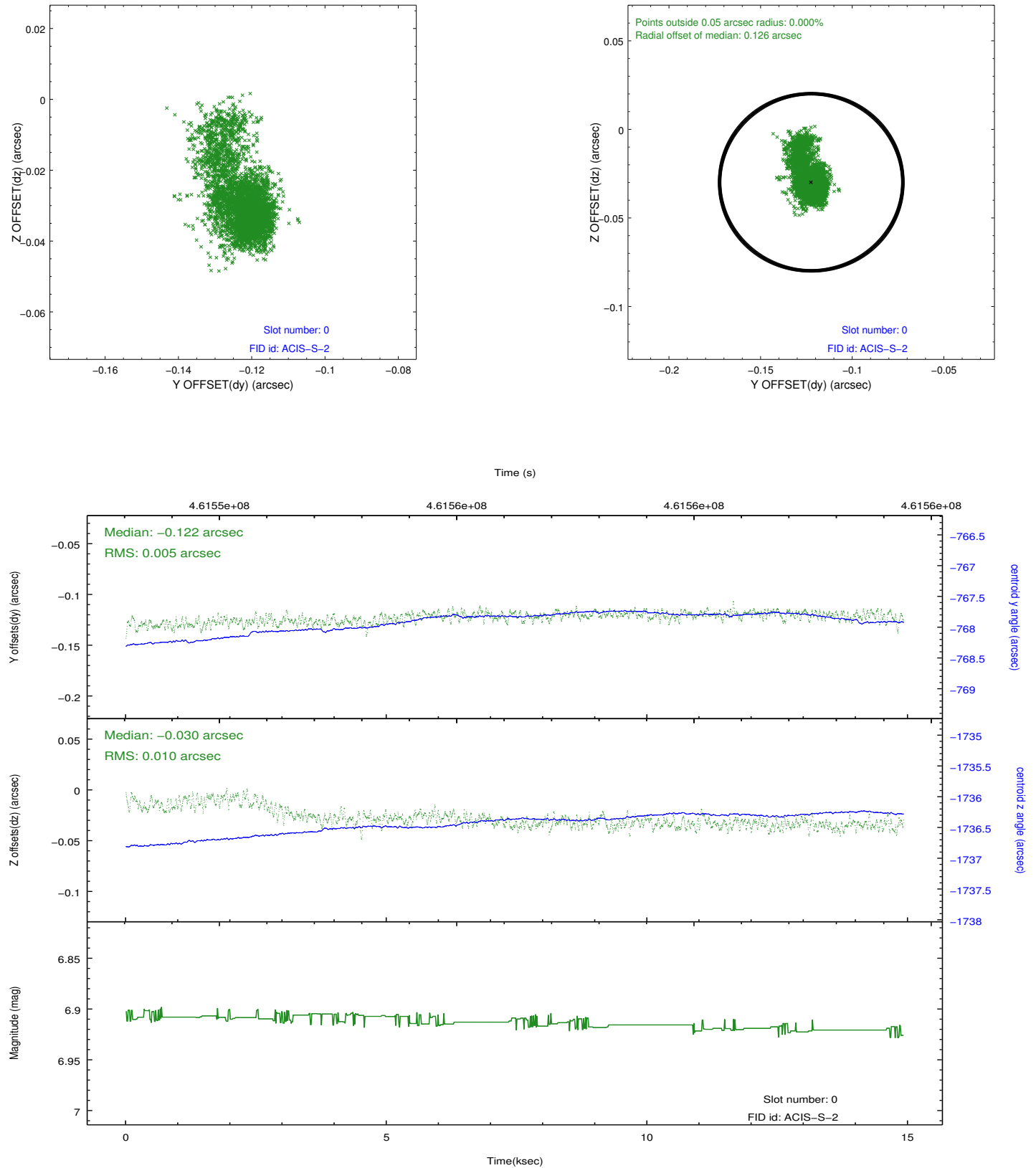


2.4.5 Slot 7

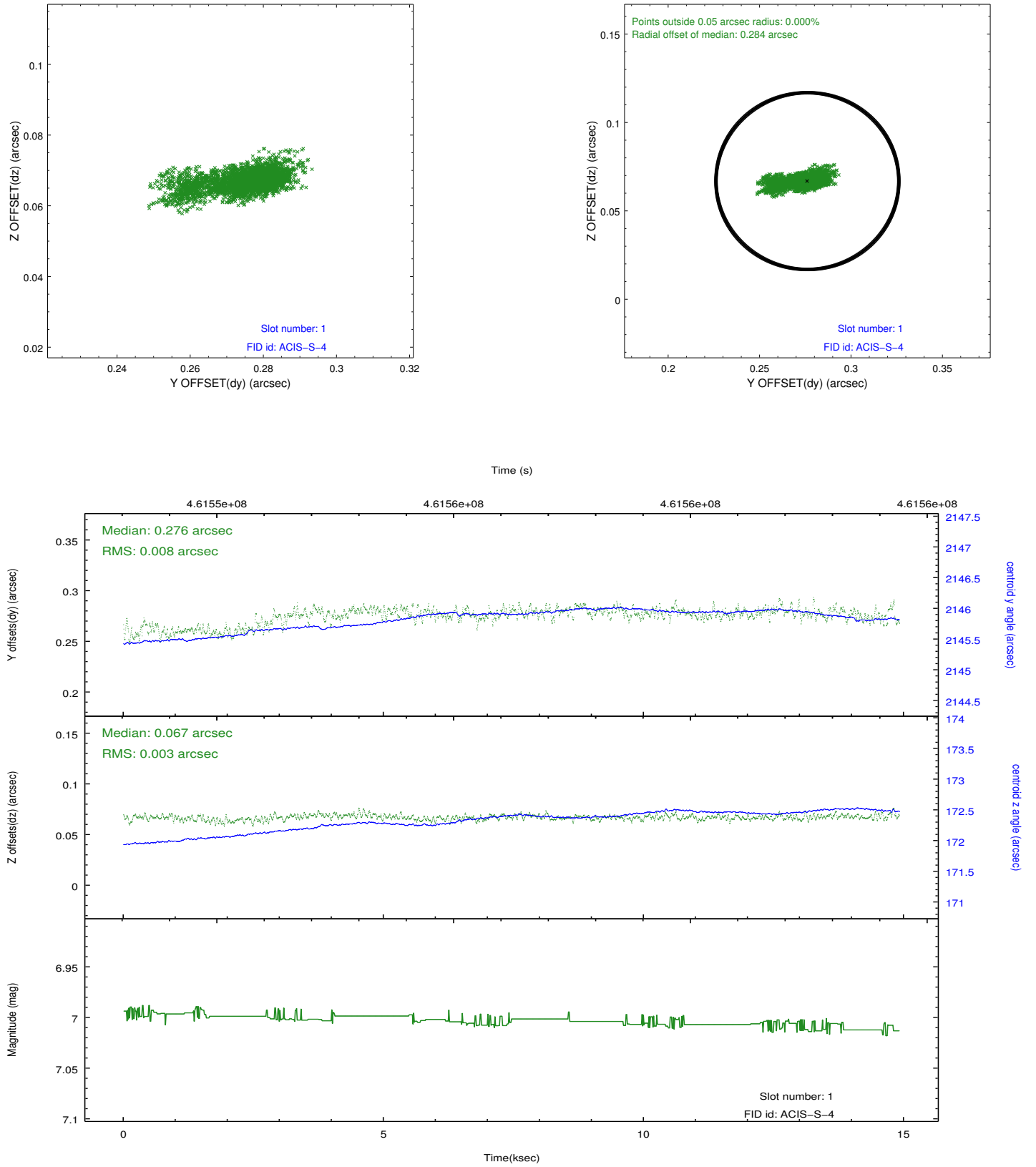


2.5 FID Slots

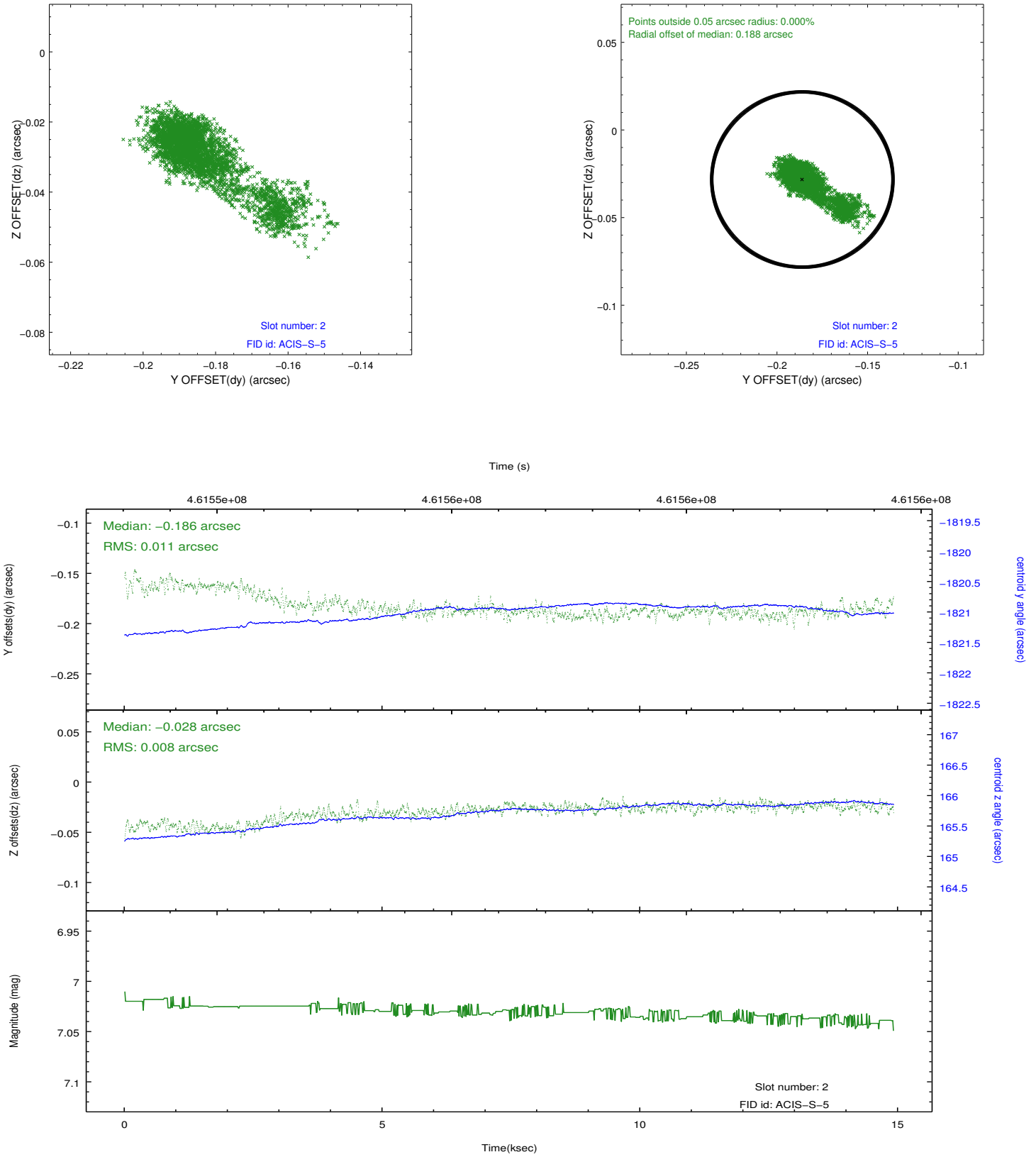
2.5.1 Slot 0



2.5.2 Slot 1



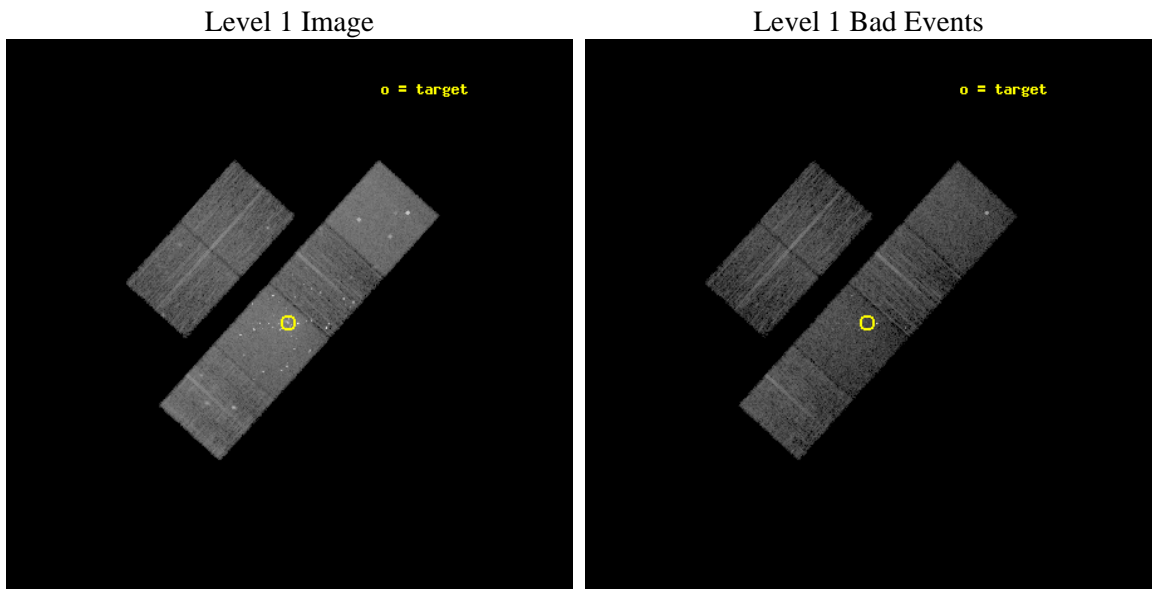
2.5.3 Slot 2



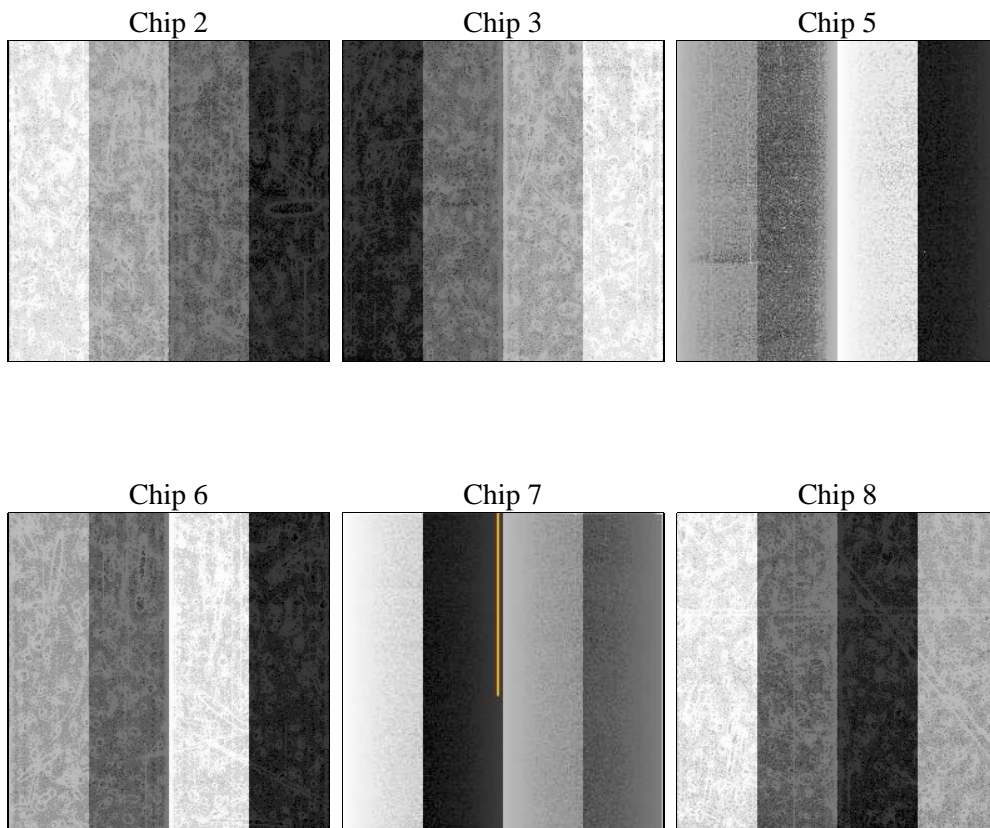
3 OBI Secondary

3.1 OBI

3.1.1 Images



3.1.2 Bias



3.1.3 Parameters

obi_num	0	Obi number	sched_exp_time	14000.000000	[s] Scheduled observation exposure time
ascdsver	8.4.5	Processing system revision	ontime	11240.14330411	Sum of GTIs [s]
caldsver	4.5.1.1	 	ontime2	11240.143242121	Sum of GTIs [s]
date	2012-08-17T16:46:03	Date and time of file creation	ontime3	11240.143390119	Sum of GTIs [s]
revision	1	Processing version of data	ontime5	11240.143284082	Sum of GTIs [s]
			ontime6	11240.143321753	Sum of GTIs [s]
			ontime7	11240.14330411	Sum of GTIs [s]
			ontime8	11240.143450379	Sum of GTIs [s]
			l1events	453419	Number of level 1 events

3.1.4 Events

	ccd 2	ccd 3	ccd 5	ccd 6	ccd 7	ccd 8		ccd 2	ccd 3	ccd 5	ccd 6	ccd 7	ccd 8
level 1 events	58249	52489	97653	62782	105323	76923	grade 0 events	2924	3087	6257	7484	10527	7027
rejected events	50980	45252	48487	49377	44216	55515		5%	5%	6%	11%	9%	9%
rejected %	87%	86%	49%	78%	41%	72%	grade 1 events	28	31	1216	84	188	68
								0%	0%	1%	0%	0%	0%
							grade 2 events	1679	1402	15561	2211	14110	4971
								2%	2%	15%	3%	13%	6%
							grade 3 events	665	750	1668	950	5988	2032
								1%	1%	1%	1%	5%	2%
							grade 4 events	687	679	1627	995	5913	1935
								1%	1%	1%	1%	5%	2%
							grade 5 events	2588	2902	7172	2923	8522	4278
								4%	5%	7%	4%	8%	5%
							grade 6 events	1315	1321	24073	1774	24601	5451
								2%	2%	24%	2%	23%	7%
							grade 7 events	48363	42317	40079	46361	35474	51161
								83%	80%	41%	73%	33%	66%

A Summary

A.1 Status

V&V Scientist	Joy Nichols
V&V Date (YYYY-MM-DD)	2012.08.20
V&V Edition	1
V&V Disposition and Status	OK
V&V Charge Time	13.8778210939173

A.2 Comments