

V&V Reference Report

L2 ASCDS Version : 10.0.1

Observation 14907 - L2 Version 2
Chandra X-Ray Center

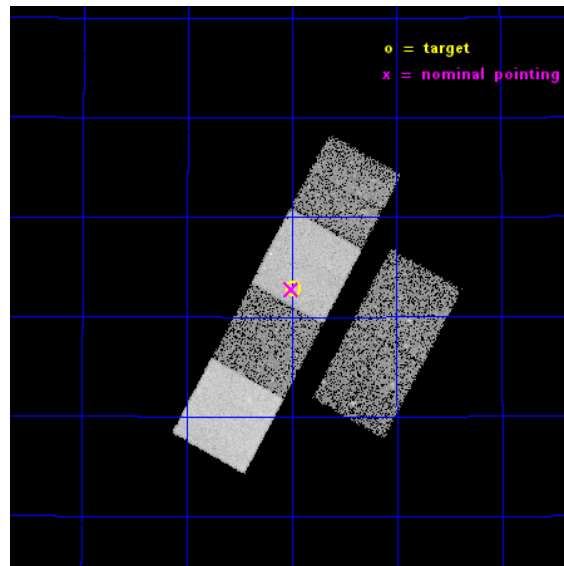
L2 Processing Date : Dec 6 2014

Contents

1	Front	2
2	OBI	3
2.1	OBI	3
2.1.1	Images	3
2.1.2	Bias	3
2.1.3	Parameters	4
2.1.4	Events	4
2.2	Compared Parameters	5
2.3	Aspect	6
2.4	Star Slots	9
2.4.1	Slot 3	9
2.4.2	Slot 4	10
2.4.3	Slot 5	11
2.4.4	Slot 6	12
2.4.5	Slot 7	13
2.5	FID Slots	14
2.5.1	Slot 0	14
2.5.2	Slot 1	15
2.5.3	Slot 2	16
A	Summary	17
A.1	Status	17
A.2	Comments	17

1 Front

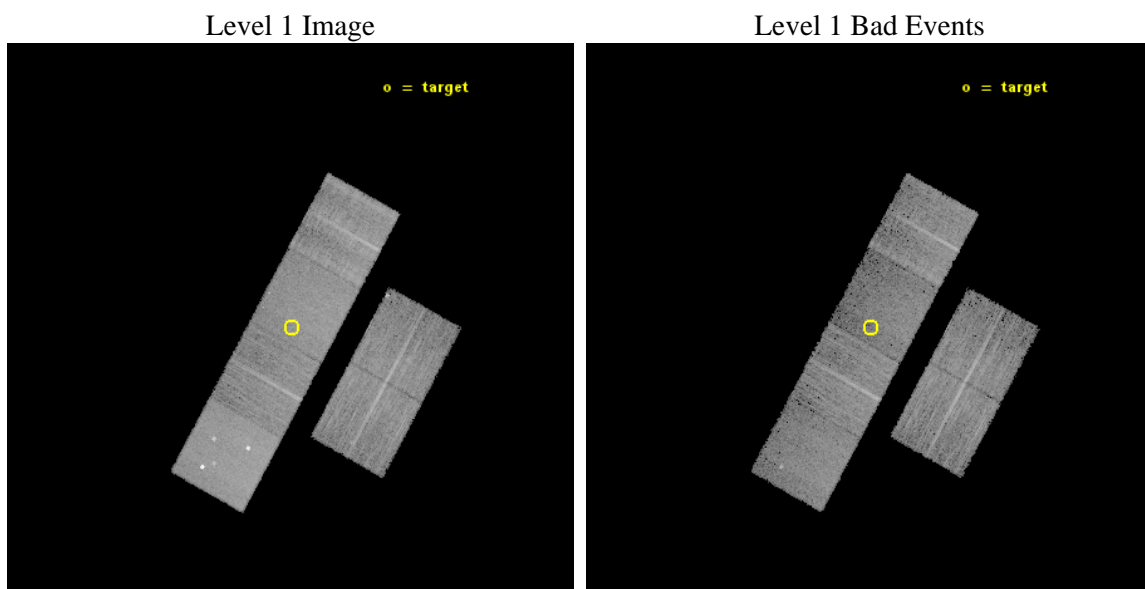
seq_num	601037	Sequence number
obs_id	14907	Observation id
title	The Origin of Elevated X-ray Emission in Strong Halpha Emitting Galaxies	Proposal title
observer	Dr. Ranga Ram Chary	Principal investigator
object	HAE 221	Source name
dtcycle	0	
cycle	P	events from which exps? Prim/Second/Both
ra_targ	212.746667	Observer's specified target RA [deg]
dec_targ	43.046361	Observer's specified target Dec [deg]
ra_nom	212.75078366416	Nominal RA [deg]
dec_nom	43.046147310038	Nominal Dec [deg]
roll_nom	298.68464688729	Nominal Roll [deg]
revision	2	Processing version of data
ontime	15966.677748382	Sum of GTIs [s]
livetime	15764.498060753	Livetime [s]
ontime2	15966.718788385	Sum of GTIs [s]
ontime3	15966.554628372	Sum of GTIs [s]
ontime5	15966.636708379	Sum of GTIs [s]
ontime6	15966.595668375	Sum of GTIs [s]
ontime7	15966.677748382	Sum of GTIs [s]
ontime8	15966.513588369	Sum of GTIs [s]
l2events	116321	Number of level 2 events



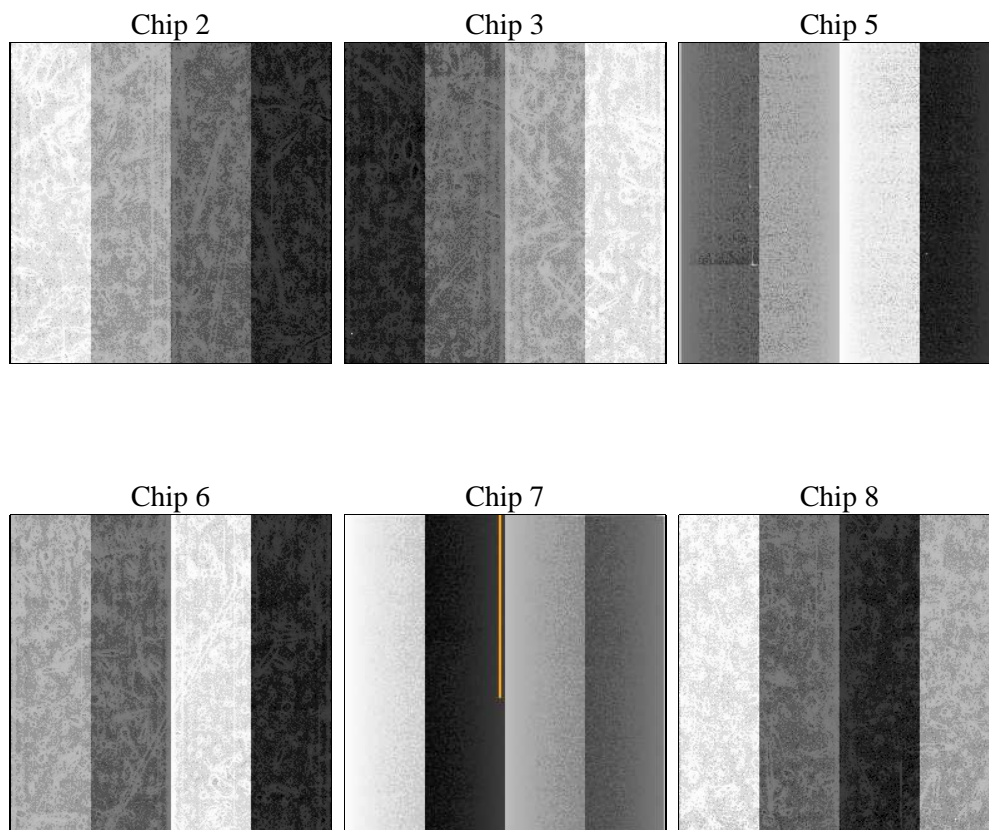
2 OBI

2.1 OBI

2.1.1 Images



2.1.2 Bias



2.1.3 Parameters

obi_num	1	Obi number	sched_exp_time	16000.000000	[s] Scheduled observation exposure time
ascdsver	10.3.1	Processing system revision	ontime	15966.677748382	Sum of GTIs [s]
caldbver	4.6.4	 	ontime2	15966.718788385	Sum of GTIs [s]
date	2014-12-06T10:39:27	Date and time of file creation	ontime3	15966.554628372	Sum of GTIs [s]
revision	2	Processing version of data	ontime5	15966.636708379	Sum of GTIs [s]
			ontime6	15966.595668375	Sum of GTIs [s]
			ontime7	15966.677748382	Sum of GTIs [s]
			ontime8	15966.513588369	Sum of GTIs [s]
			l1events	478802	Number of level 1 events

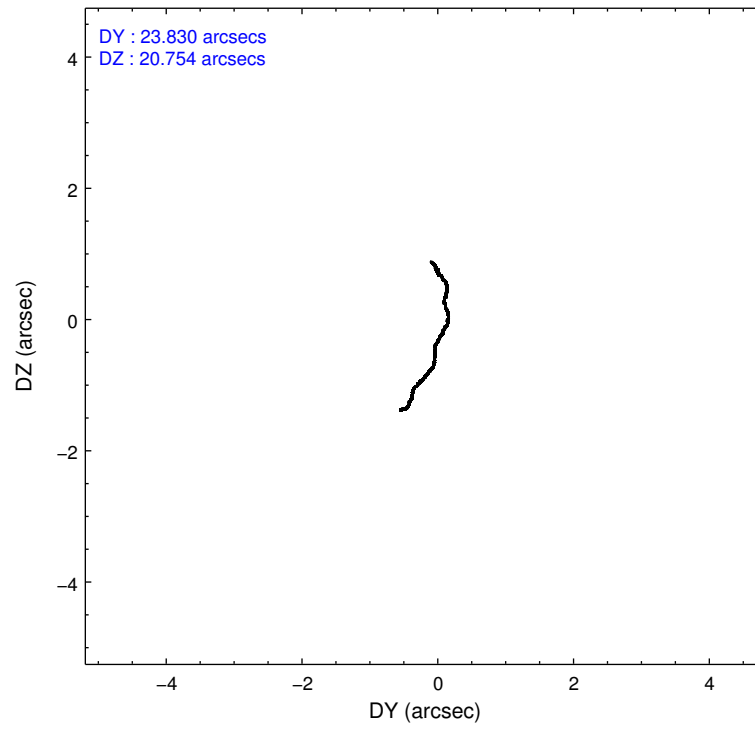
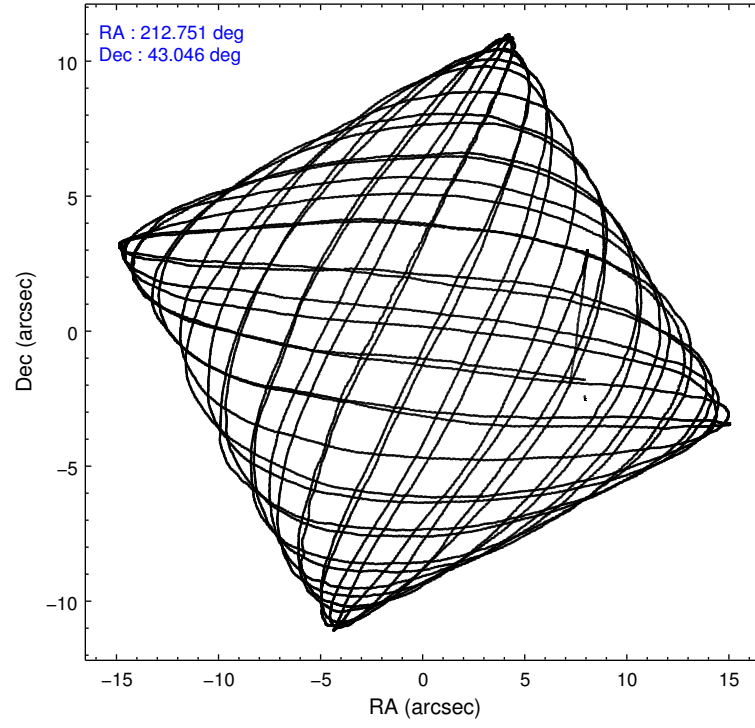
2.1.4 Events

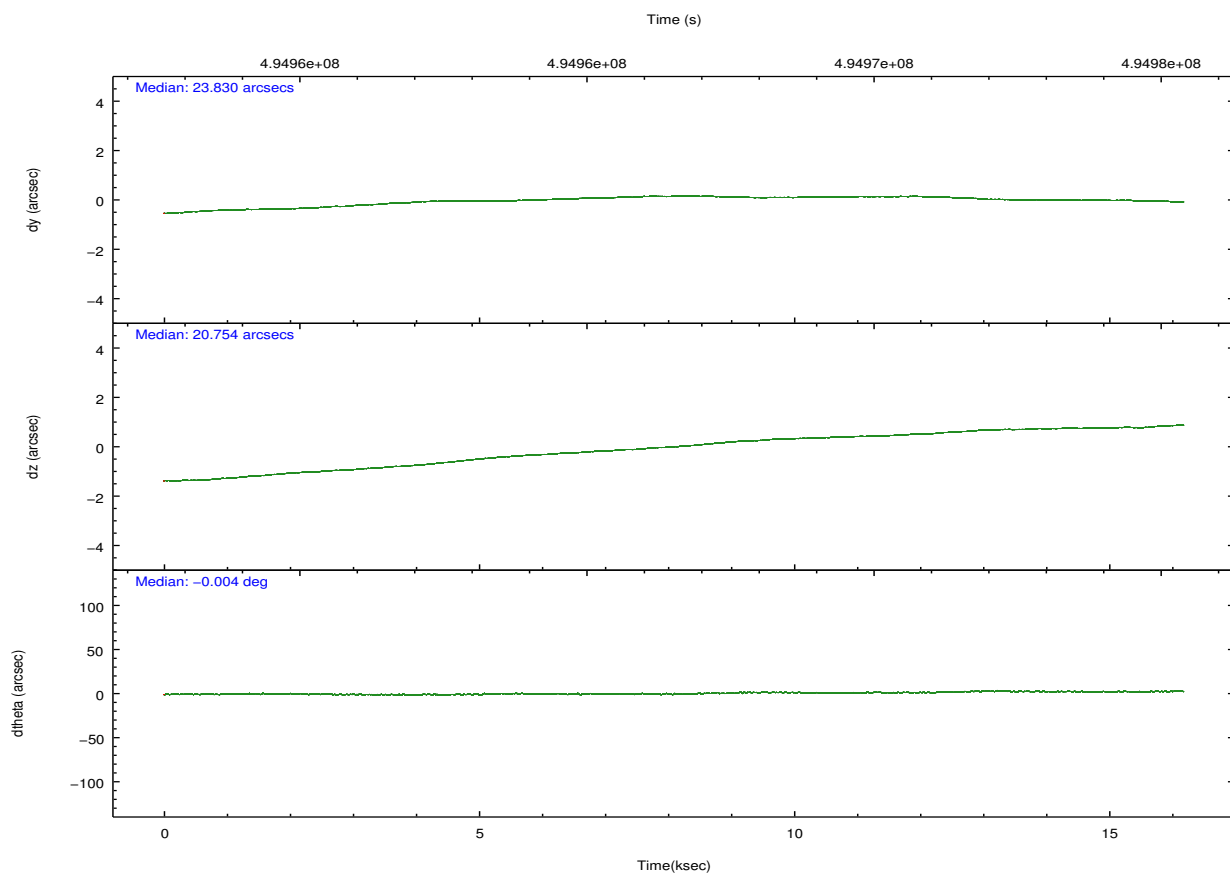
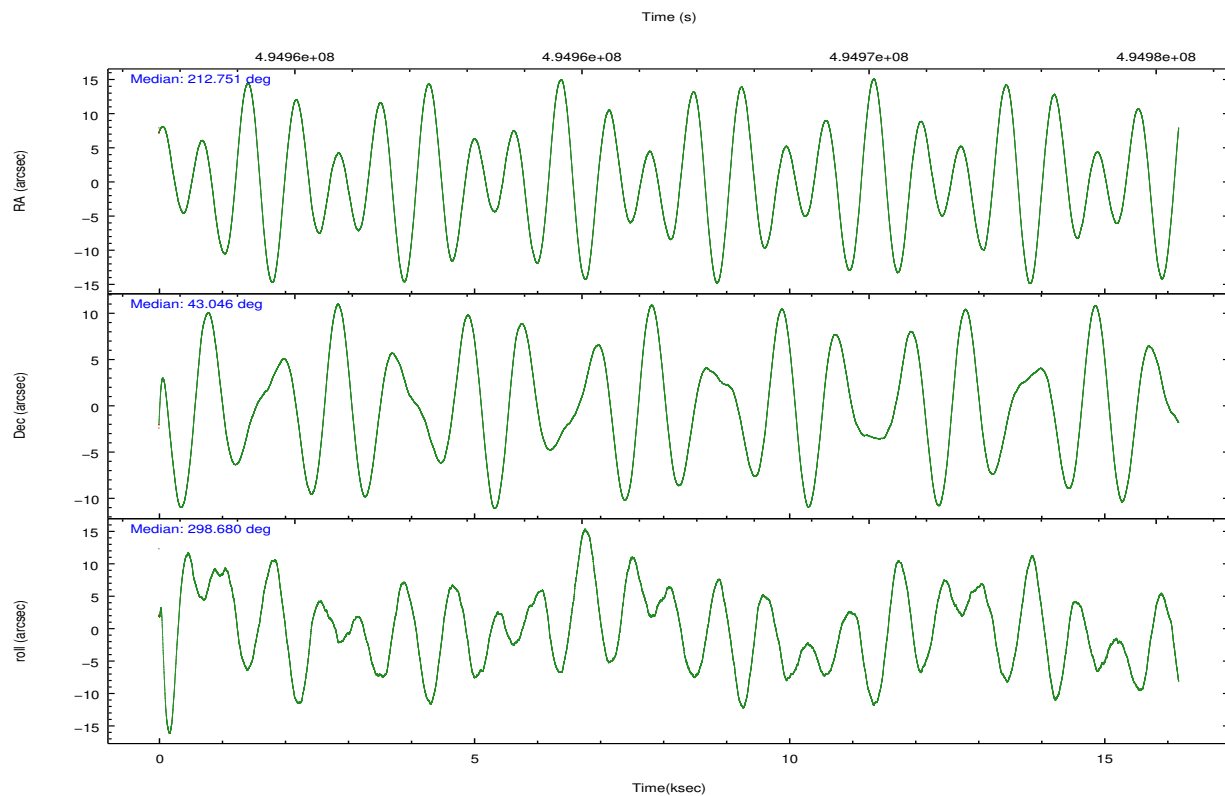
	ccd 2	ccd 3	ccd 5	ccd 6	ccd 7	ccd 8		ccd 2	ccd 3	ccd 5	ccd 6	ccd 7	ccd 8
level 1 events	68477	63011	111337	69517	80788	85672	grade 0 events	2948	3287	10433	2866	3832	6573
rejected events	60621	55072	50575	61401	41998	62041		4%	5%	9%	4%	4%	7%
rejected %	88%	87%	45%	88%	51%	72%	grade 1 events	45	36	493	40	98	56
								0%	0%	0%	0%	0%	0%
							grade 2 events	1915	1662	18265	1809	8334	5739
								2%	2%	16%	2%	10%	6%
							grade 3 events	755	791	2034	842	3415	2580
								1%	1%	1%	1%	4%	3%
							grade 4 events	755	795	2017	835	3435	2448
								1%	1%	1%	1%	4%	2%
							grade 5 events	2601	3120	8115	3189	8513	4715
								3%	4%	7%	4%	10%	5%
							grade 6 events	1483	1405	28035	1768	19784	6300
								2%	2%	25%	2%	24%	7%
							grade 7 events	57975	51915	41945	58168	33377	57261
								84%	82%	37%	83%	41%	66%

2.2 Compared Parameters

Parameter	Planned	Actual	Parameter	Planned	Actual
Instrument	ACIS	ACIS	Obspar format version number	7	7
Detector	ACIS-235678	ACIS-235678	Obspar file type	PREDICTED	ACTUAL
Grating	NONE	NONE	Obspar update status	NONE	UPDATED
Data mode	FAINT	FAINT	CCD I0 on	N	N
Observation mode	POINTING	POINTING	CCD I1 on	N	N
[deg] Pointing RA	212.718568	212.7507836641612	CCD I2 on	Y	Y
[deg] Pointing Dec	43.060045	43.04614731003775	CCD I3 on	Y	Y
[deg] Pointing Roll	298.550005	298.684646887291	CCD S0 on	N	N
[mm] SIM focus pos	-0.684267	-0.6828225247311905	CCD S1 on	O1	Y
[mm] SIM defocus	0	0.001444936568705701	CCD S2 on	Y	Y
[mm] SIM translation stage pos	-190.132523	-190.1400660498719	CCD S3 on	Y	Y
[mm] SIM translation stage offset	0	0.00754346686406393	CCD S4 on	Y	Y
[s] Observation start time (MET)	494958604.184000	494957456.97335	CCD S5 on	N	N
Observation start date	2013-09-07T16:28:57	2013-09-07T16:10:56	Number of optional ACIS chips dropped	0	0
[s] Observation end time (MET)	494974604.184000	494975674.29935	On-chip summing requested	N	N
Observation end date	2013-09-07T20:55:37	2013-09-07T21:14:34	Subarray requested	NONE	NONE
Read mode	TIMED	TIMED	Alternating exposures requested	N	N
			[s] Primary exposure time	0.000000	3.2

2.3 Aspect



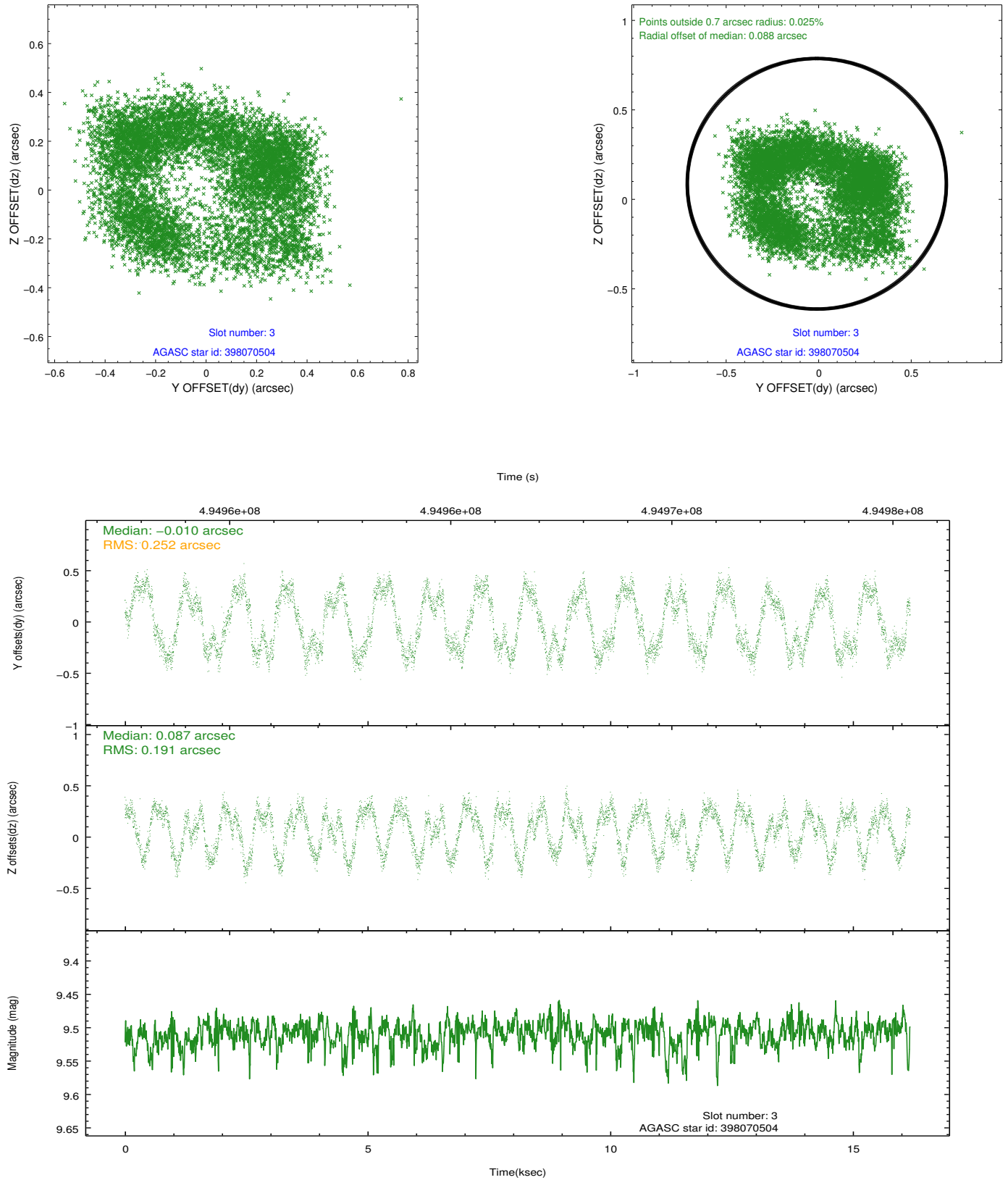


Slot Statistics

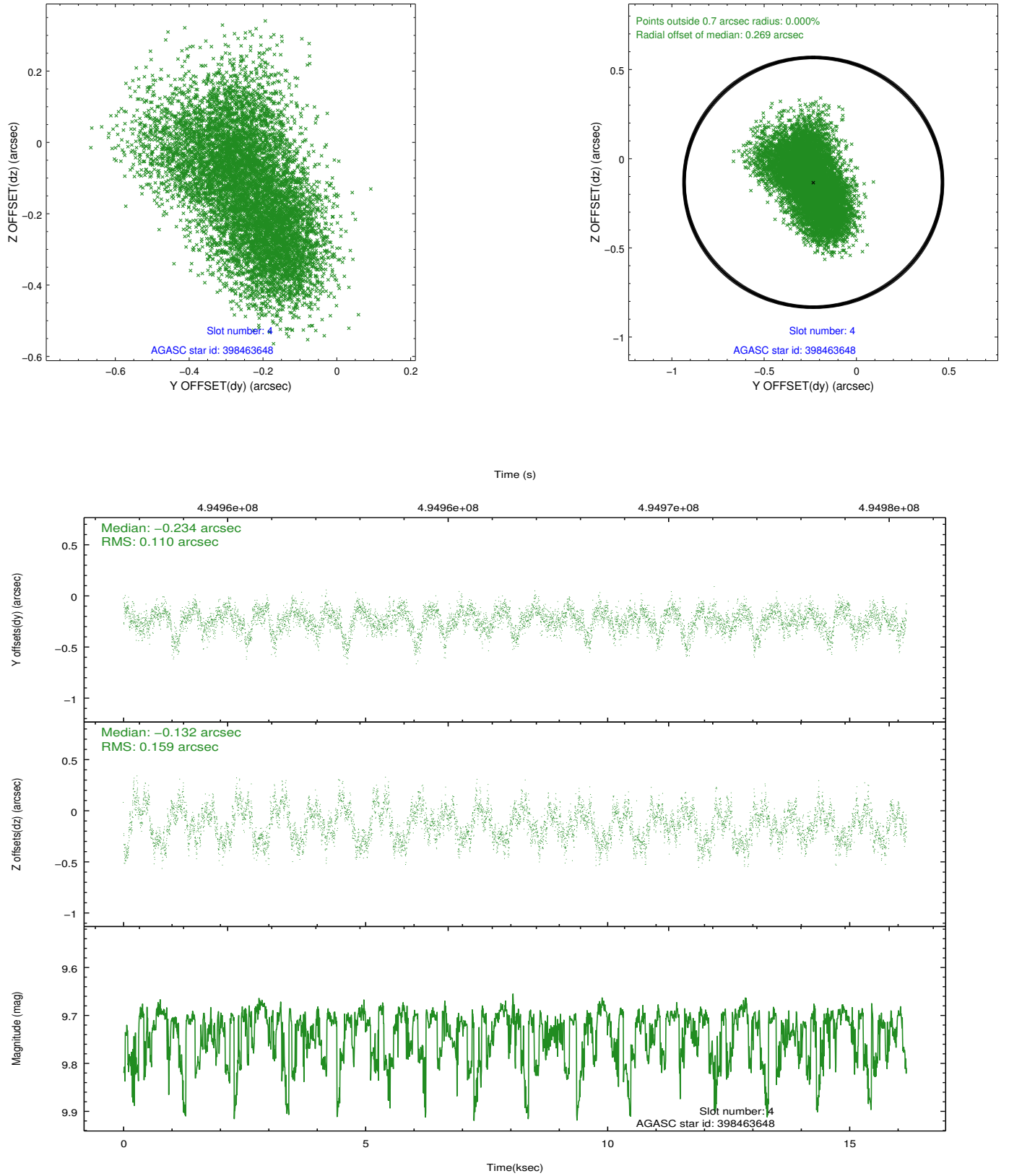
slot	status	used	id	mag	n_pts	med_dy	med_dz	dr1	dr2	ra	dec	mean_y	mean_z
0	FID		ACIS-S-2	6.95	3947	-0.141	-0.009	0.014	0.021	0.000000	0.000000	-777.14	-1742.20
1	FID		ACIS-S-4	7.04	3947	0.313	0.070	0.010	0.016	0.000000	0.000000	2136.47	166.08
2	FID		ACIS-S-5	7.05	3947	-0.205	-0.053	0.012	0.019	0.000000	0.000000	-1829.70	159.94
3	GUIDE	used	398070504	9.51	7849	-0.010	0.087	0.348	0.467	212.865591	42.444160	2132.83	-717.47
4	GUIDE	used	398463648	9.73	7808	-0.234	-0.132	0.209	0.329	213.282191	43.018368	837.34	1234.05
5	GUIDE	used	398463704	9.63	7837	0.097	0.057	0.208	0.303	211.803567	42.974585	-892.14	-2257.08
6	GUIDE	used	398465424	9.65	7875	0.037	-0.236	0.149	0.230	212.802687	43.106658	-43.46	272.60
7	GUIDE	used	398466888	9.55	7880	0.134	0.260	0.169	0.280	211.850253	43.442539	-2303.84	-1330.04

2.4 Star Slots

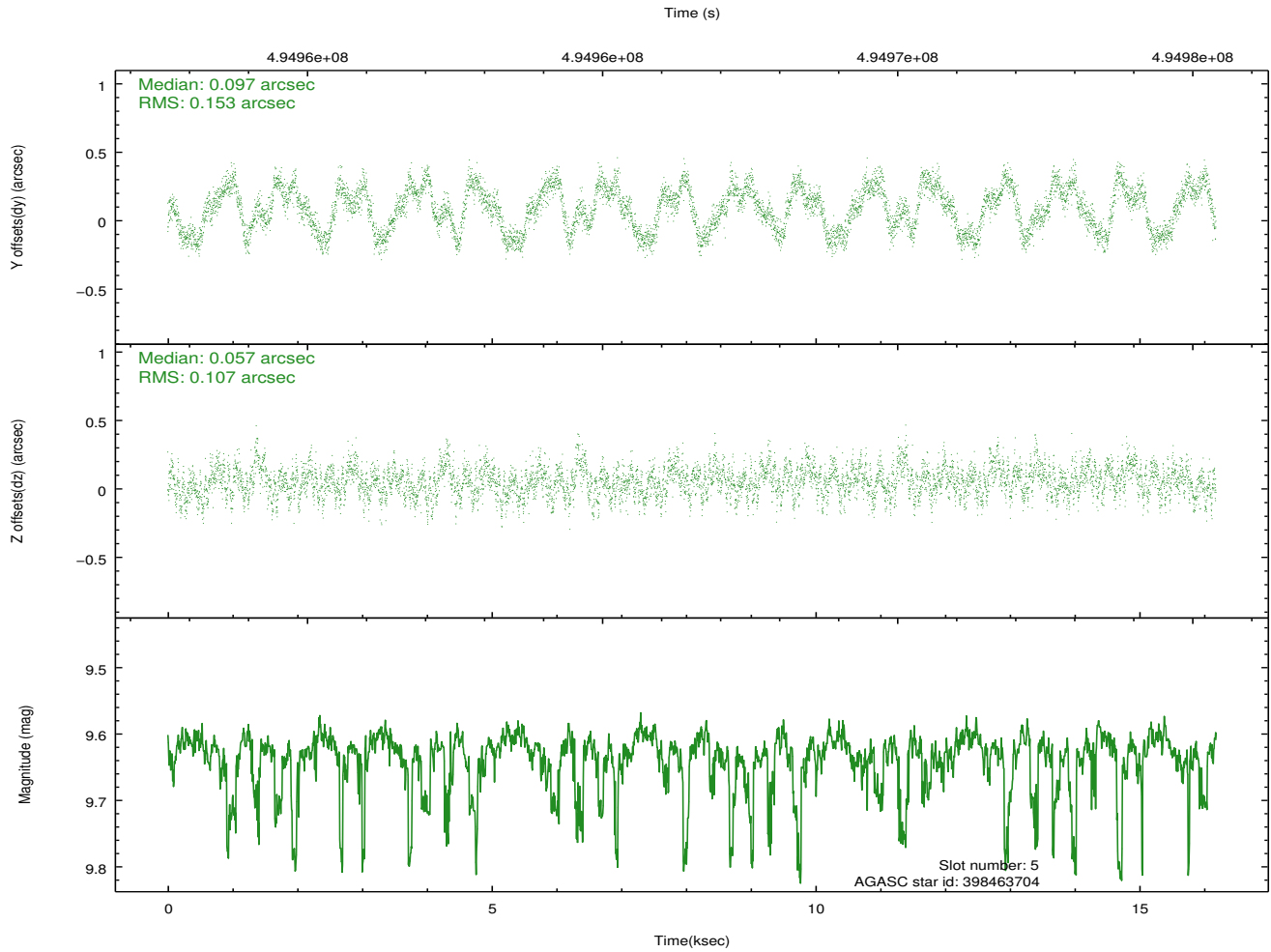
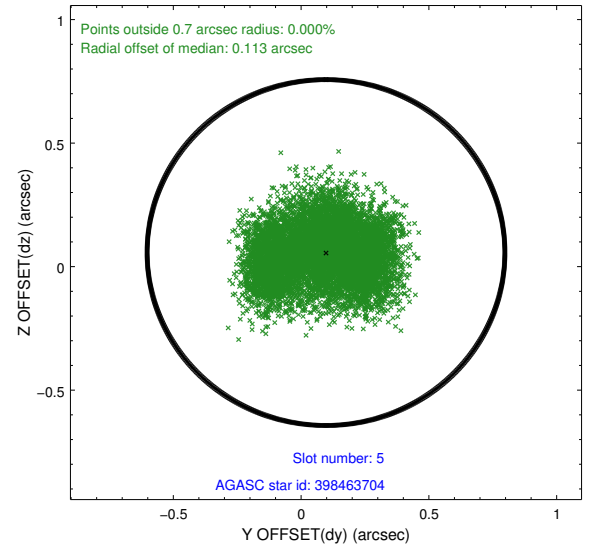
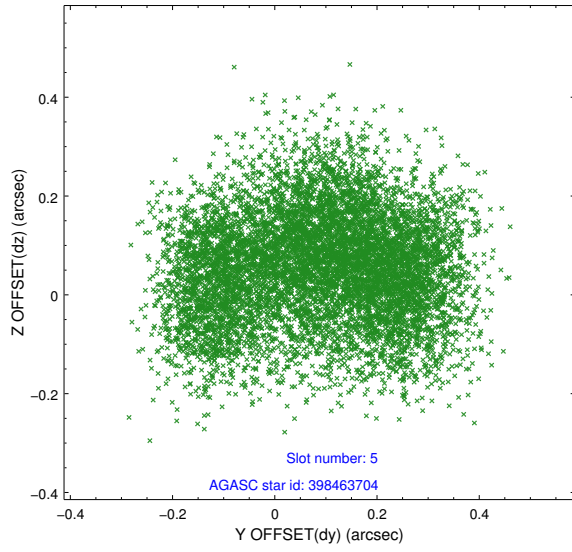
2.4.1 Slot 3



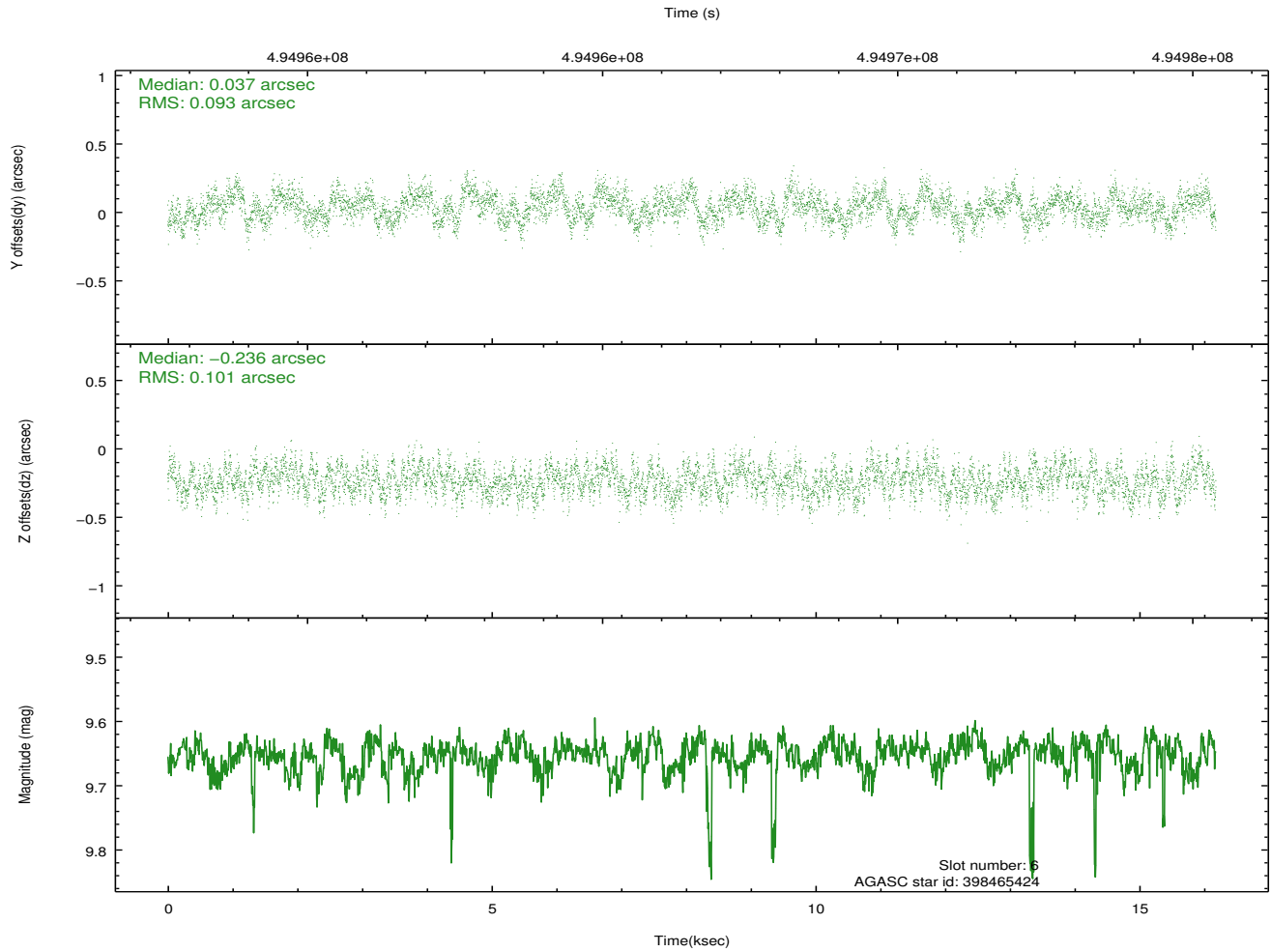
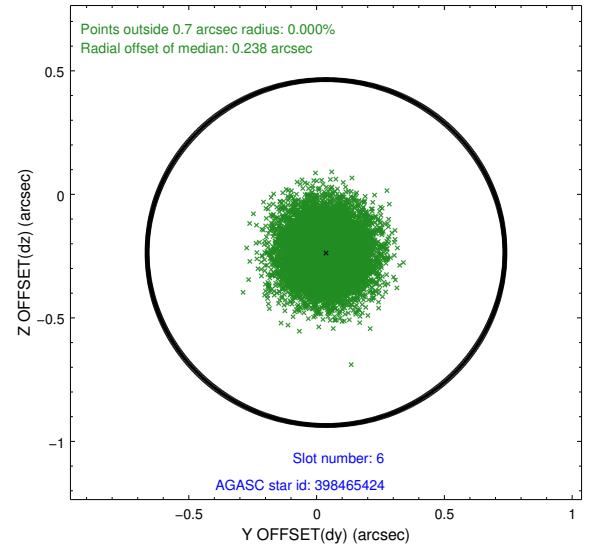
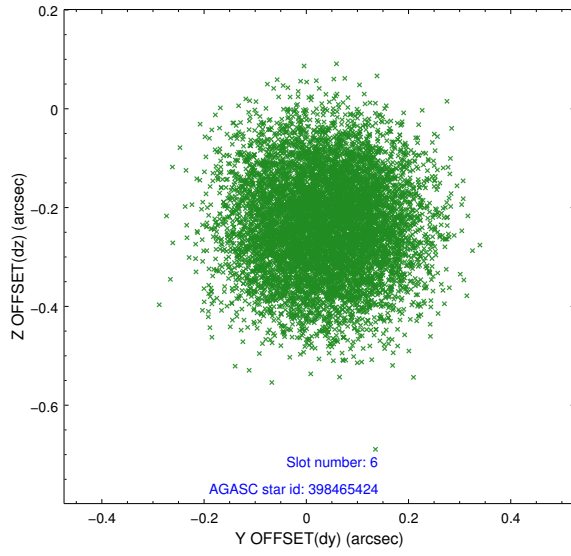
2.4.2 Slot 4



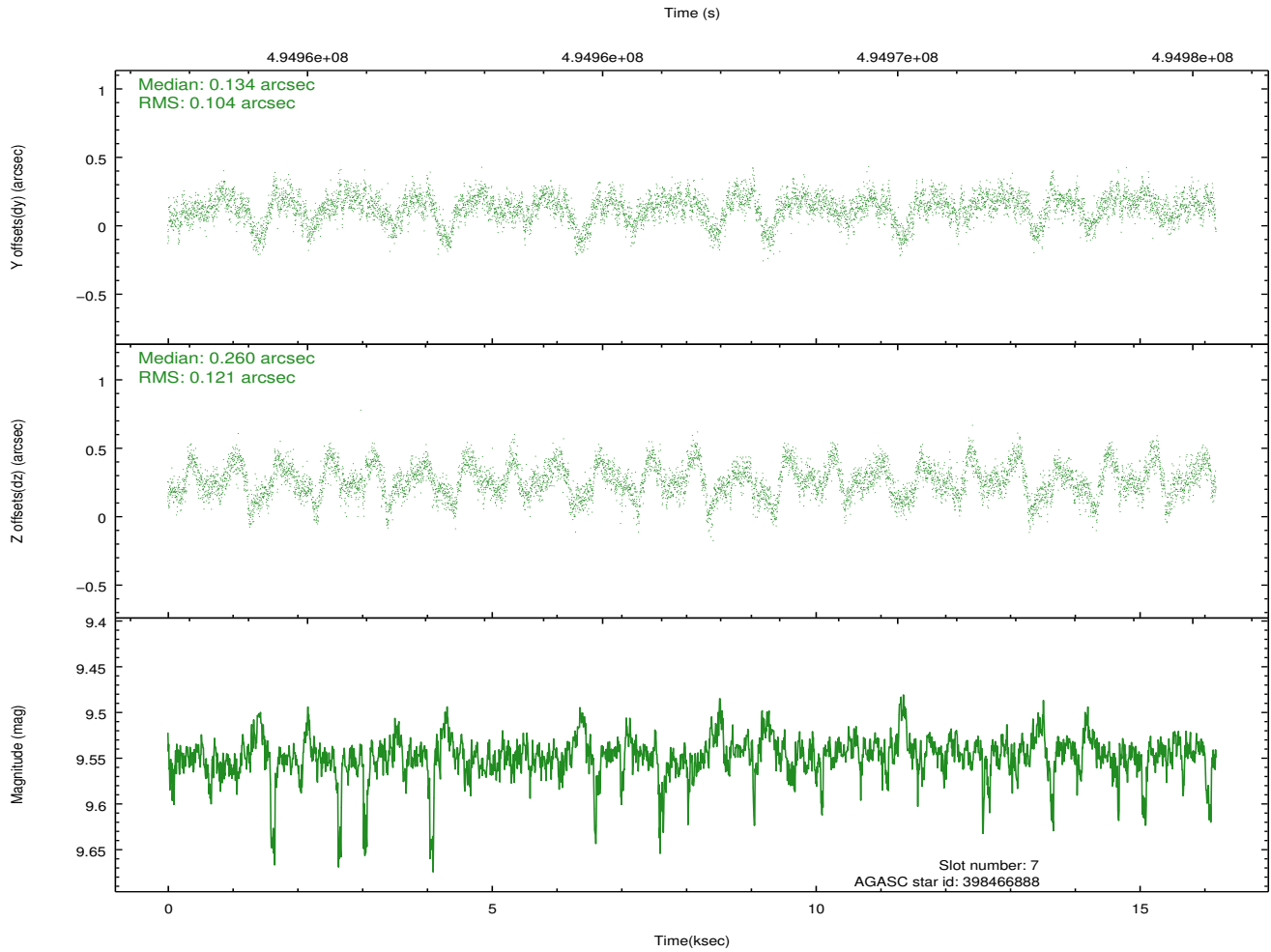
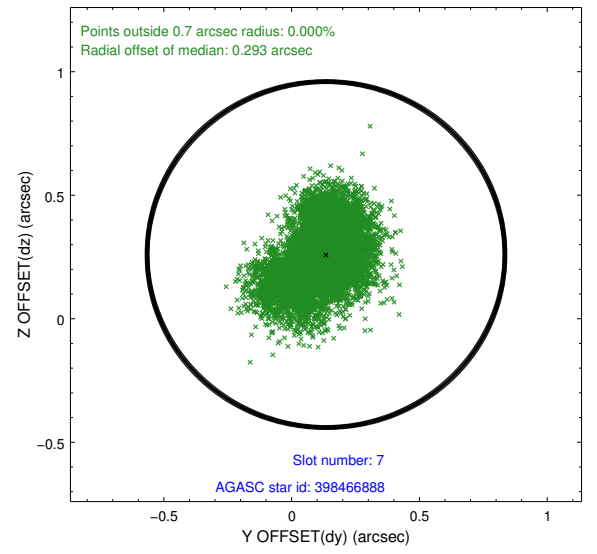
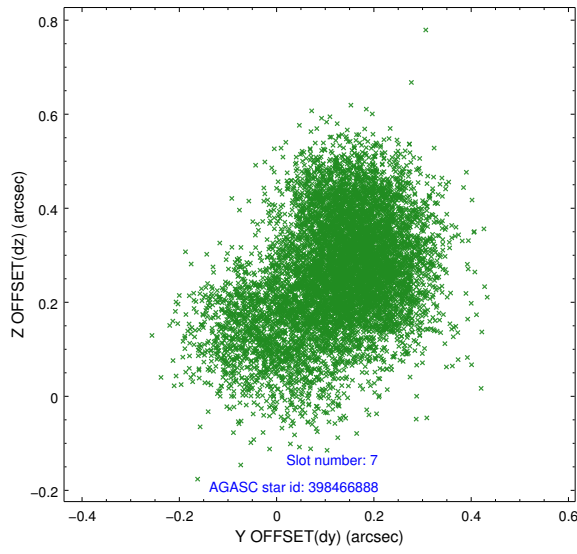
2.4.3 Slot 5



2.4.4 Slot 6

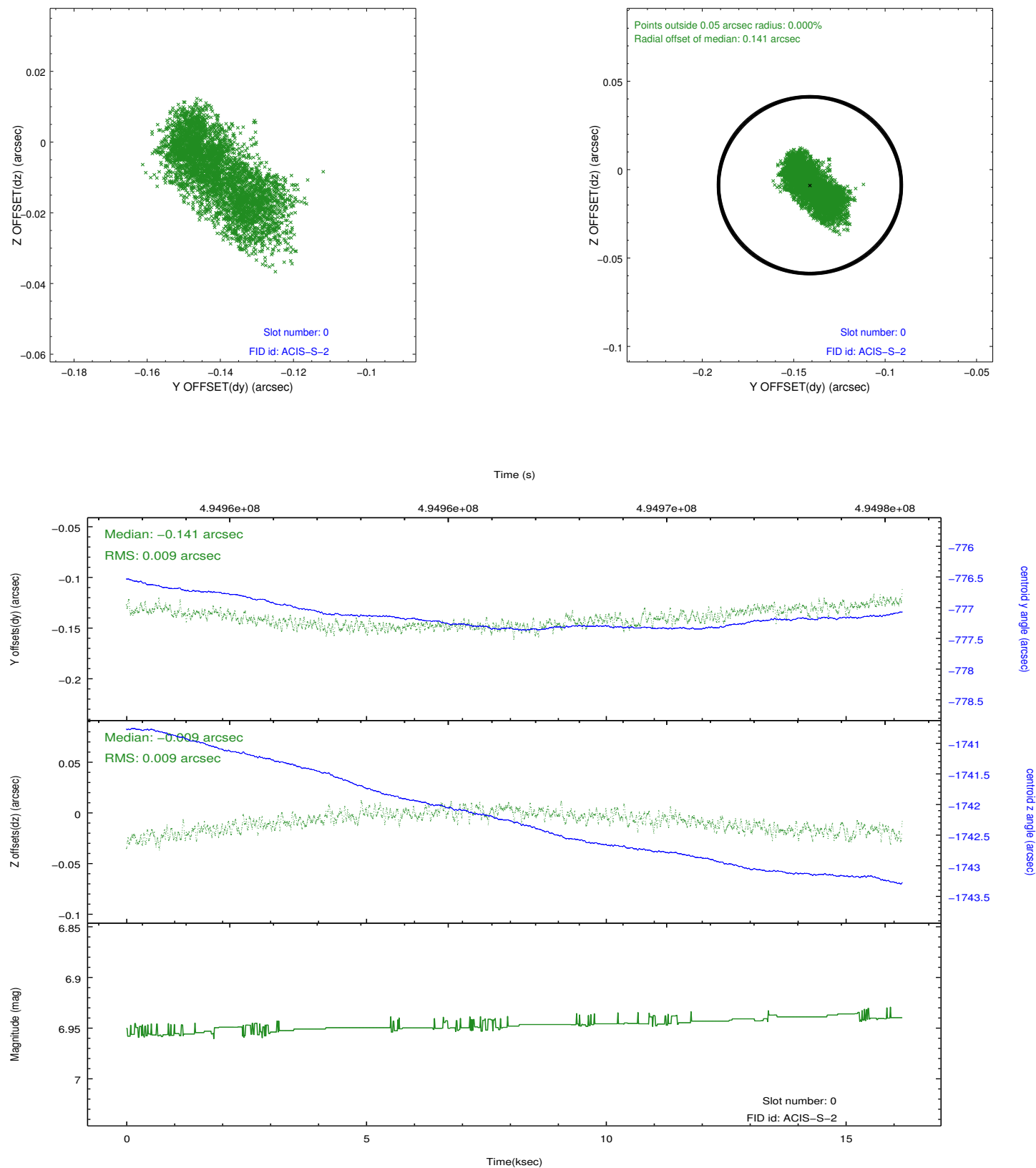


2.4.5 Slot 7

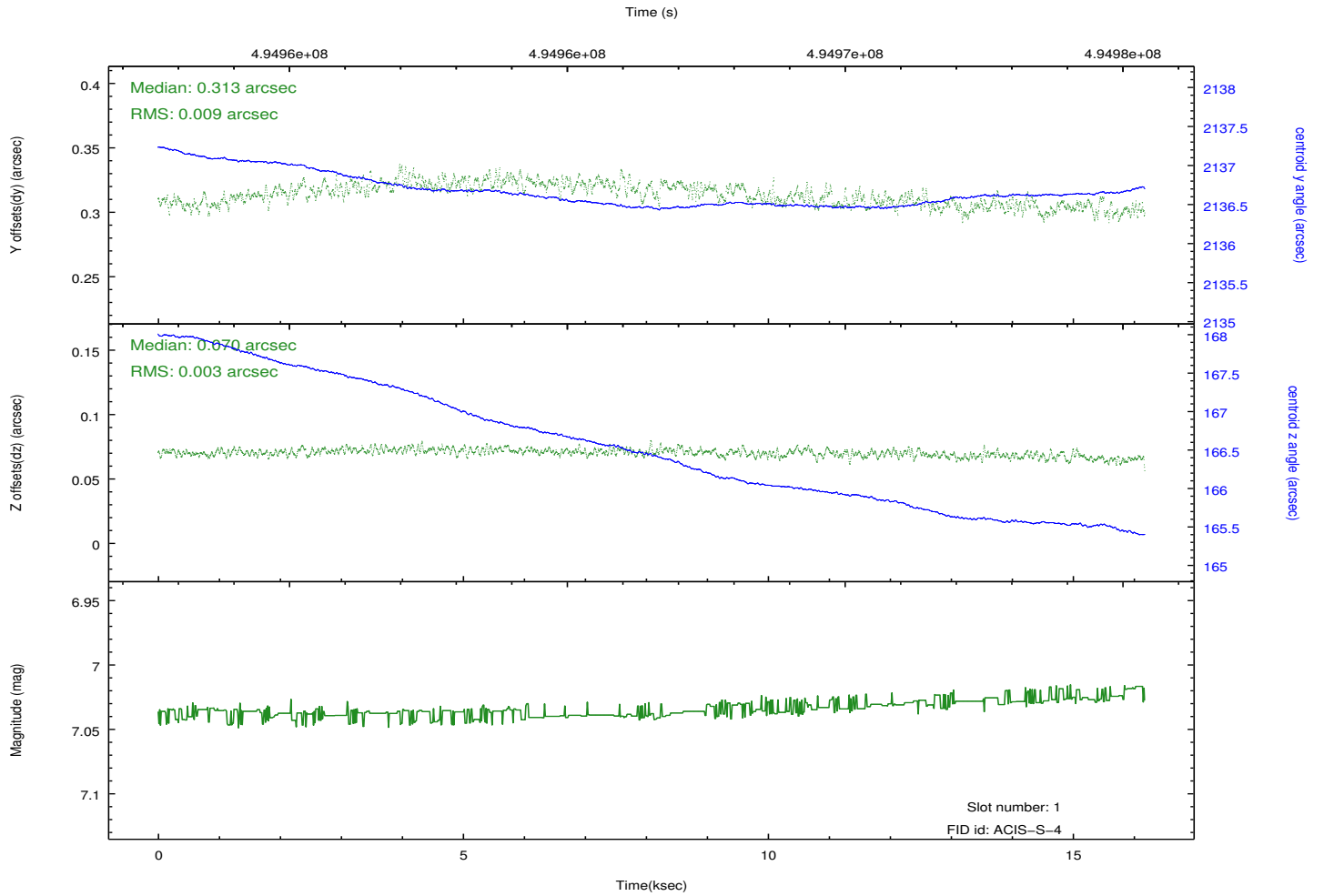
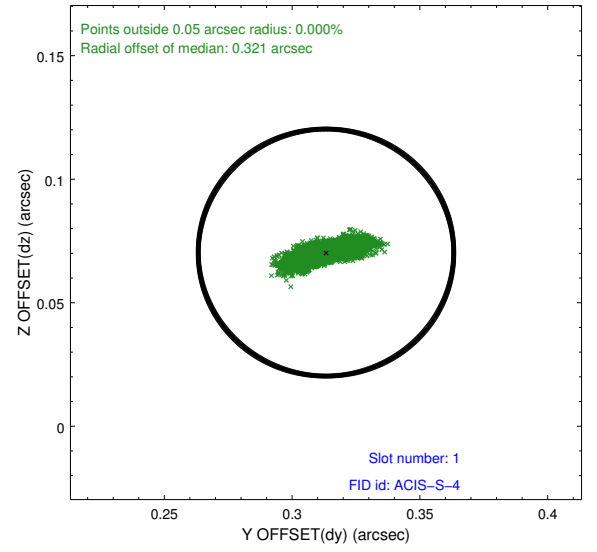
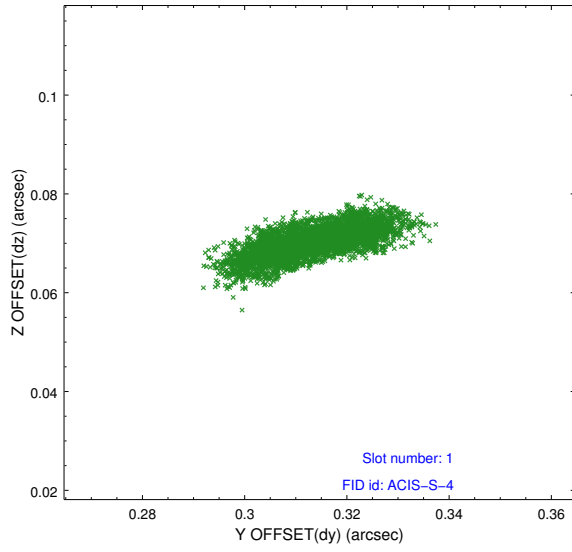


2.5 FID Slots

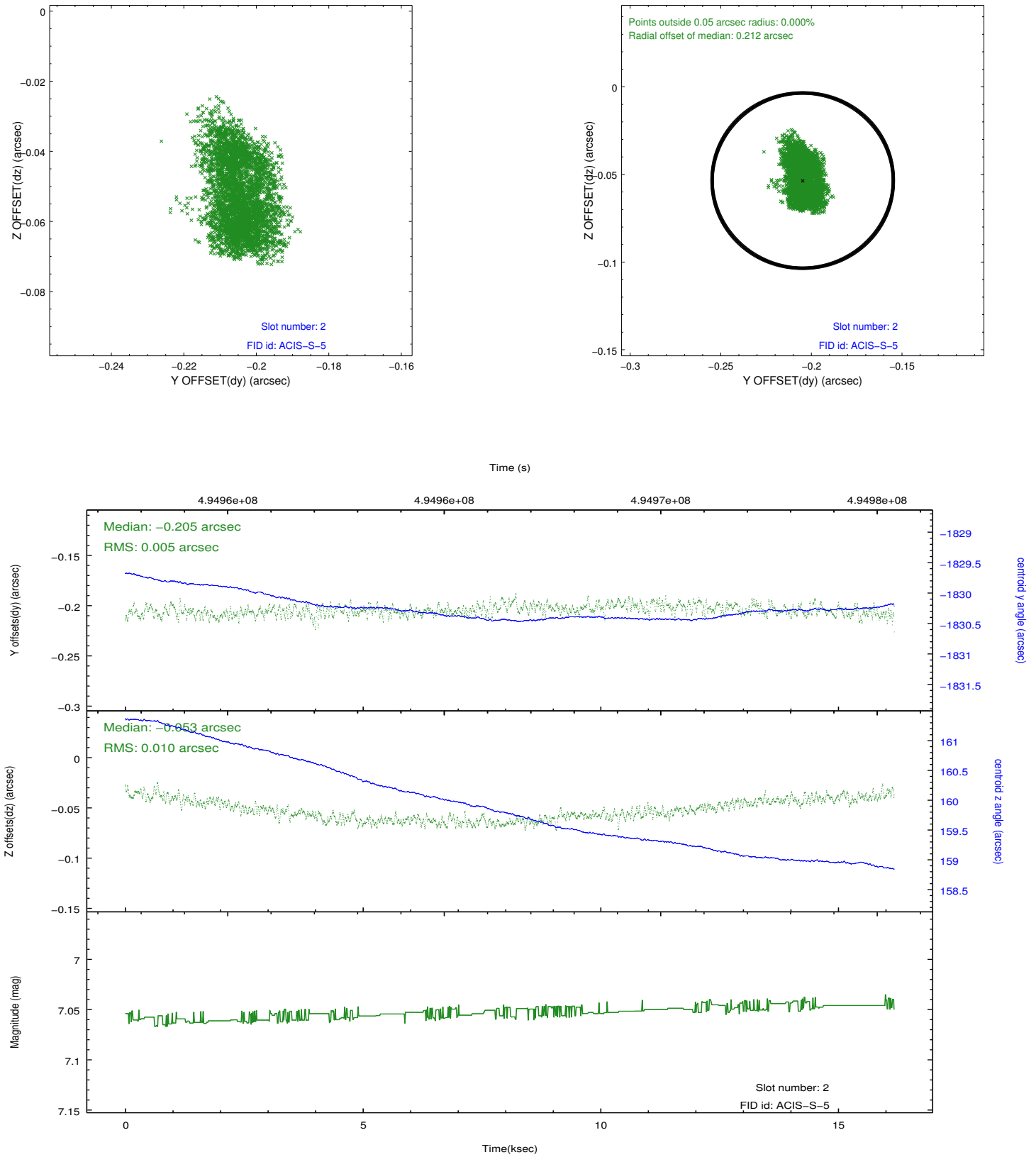
2.5.1 Slot 0



2.5.2 Slot 1



2.5.3 Slot 2



A Summary

A.1 Status

V&V Scientist	Jen Lauer
V&V Date (YYYY-MM-DD)	2014.12.12
V&V Edition	1
V&V Disposition and Status	OK
V&V Charge Time	15.966677748382

A.2 Comments

These data have been reprocessed with new aspect alignment calibration files that correct small mean offsets (up to 0.4 arcsecs) and improve overall astrometric accuracy. The new calibration was determined using data from the time period being reprocessed and was performed using cross-correlation of X-ray sources with radio and optical counterparts.