

V&V Reference Report

L2 ASCDS Version : 8.2.1

Observation 147 - L2 Version 4

Chandra X-Ray Center

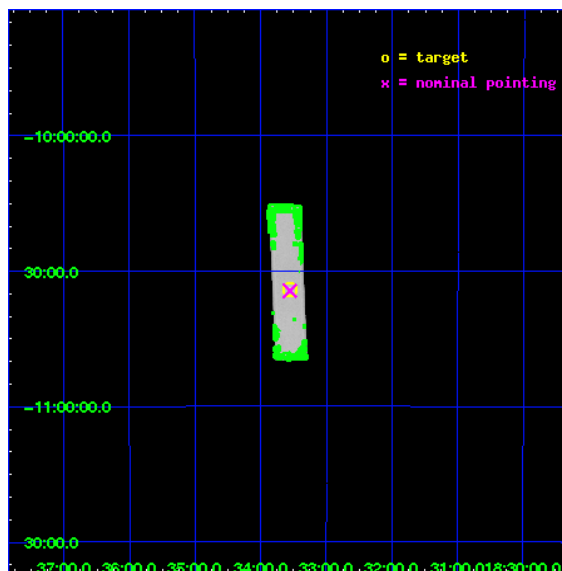
L2 Processing Date : Jan 13 2010

Contents

1	Front	2
2	OBI	3
2.1	OBI	3
2.1.1	Images	3
2.1.2	Parameters	4
2.1.3	Events	4
2.2	Compared Parameters	5
2.3	Aspect	6
2.4	Star Slots	9
2.4.1	Slot 3	9
2.4.2	Slot 4	10
2.4.3	Slot 5	11
2.4.4	Slot 6	12
2.4.5	Slot 7	13
2.5	FID Slots	14
2.5.1	Slot 0	14
2.5.2	Slot 1	15
2.5.3	Slot 2	16
3	Point Sources	17
A	Summary	18
A.1	Status	18
A.2	Comments	18

1 Front

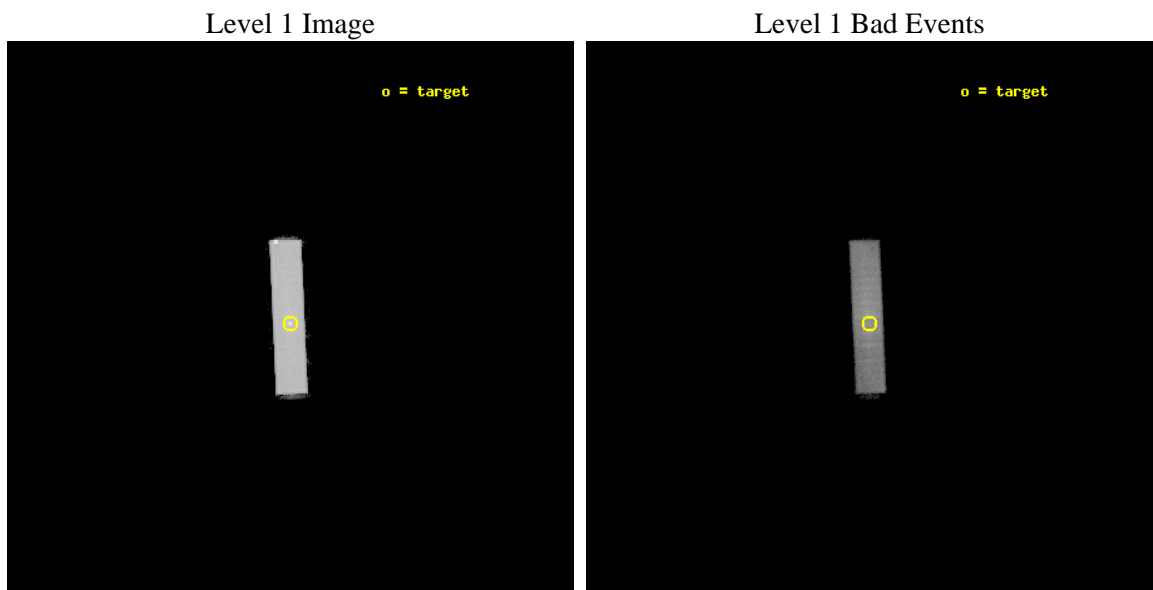
seq_num	590015	Sequence number
obs_id	147	Observation id
title	HRC RESPONSE TO CONTINUUM SOURCE.	Proposal title
observer	Dr. CXC Calibration	Principal investigator
object	G21.5-0.9 [HRC-S, Offsets=0,0,0 CENTER MCP]	Source name
ra_targ	278.389583	Observer's specified target RA
dec_targ	-10.568528	Observer's specified target Dec
ra_nom	278.3886303124	Nominal RA
dec_nom	-10.573933889382	Nominal Dec
roll_nom	267.44700867983	Nominal Roll
revision	4	Processing version of data
ontime	9723.4065991119	[s]
livetime	9652.230334328	Ontime multiplied by DTCOR
l2events	404431	Number of level 2 events



2 OBI

2.1 OBI

2.1.1 Images



2.1.2 Parameters

obi_num	0	Obi number	sched_exp_time	10000.000000	Scheduled observation exposure time
ascdsver	8.2.1	Processing system revision	ontime	9723.4065991119	[s]
caldbver	4.1.5	 	ll events	579566	Number of level 1 events
date	2010-01-13T04:19:45	Date and time of file creation			
revision	3	Processing version of data			

2.1.3 Events

Level 1 Events

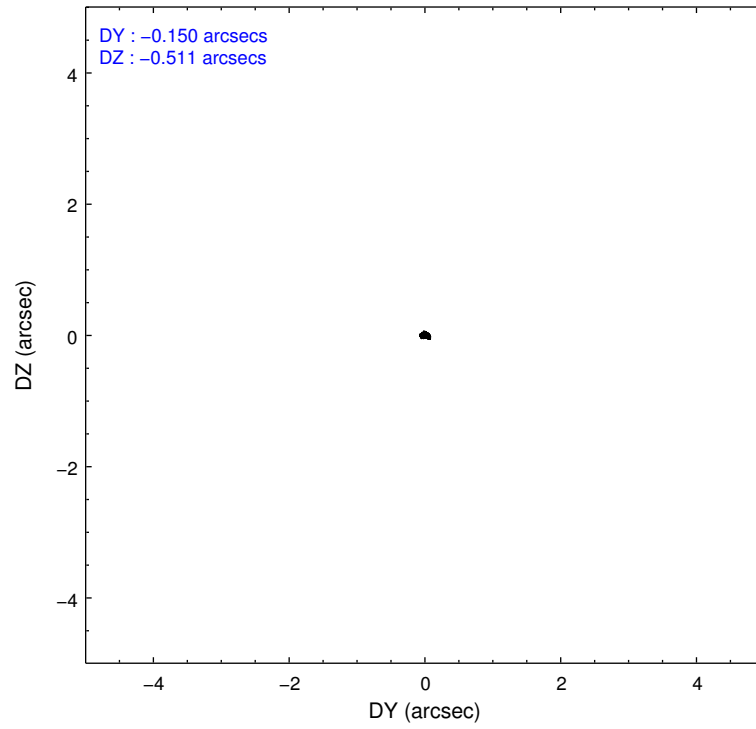
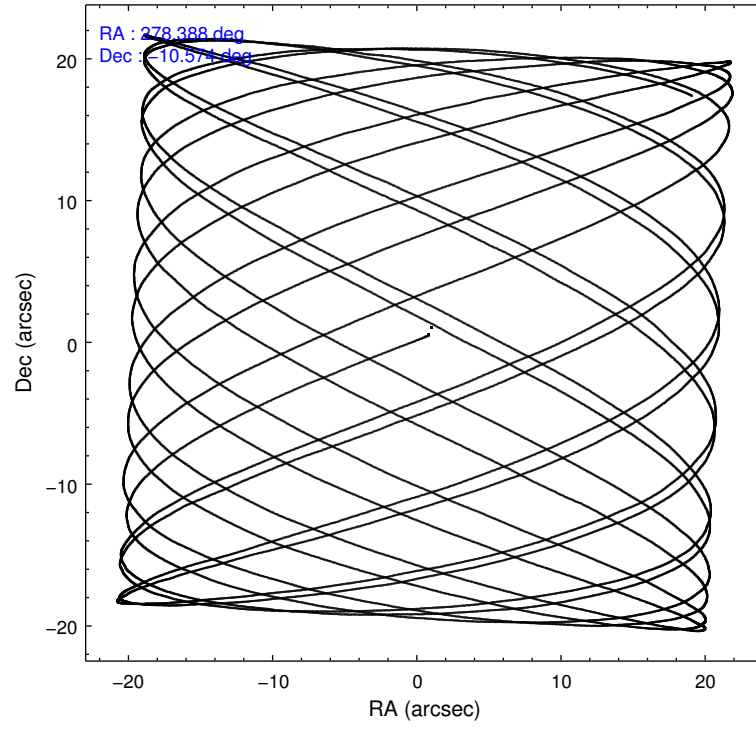
	segment 1	segment 2	segment 3
level 1 events	0	579566	0
rejected events	0	138279	0
rejected %	0%	23%	0%

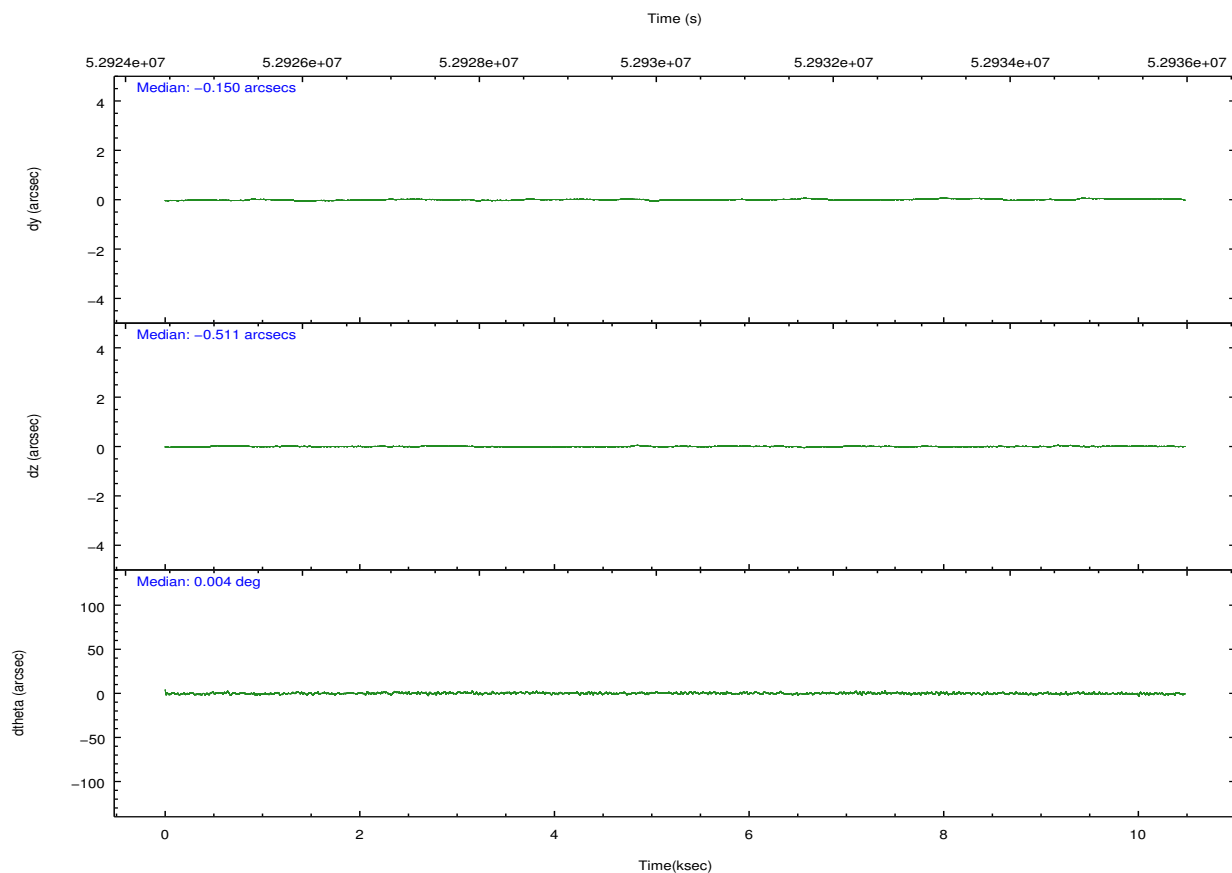
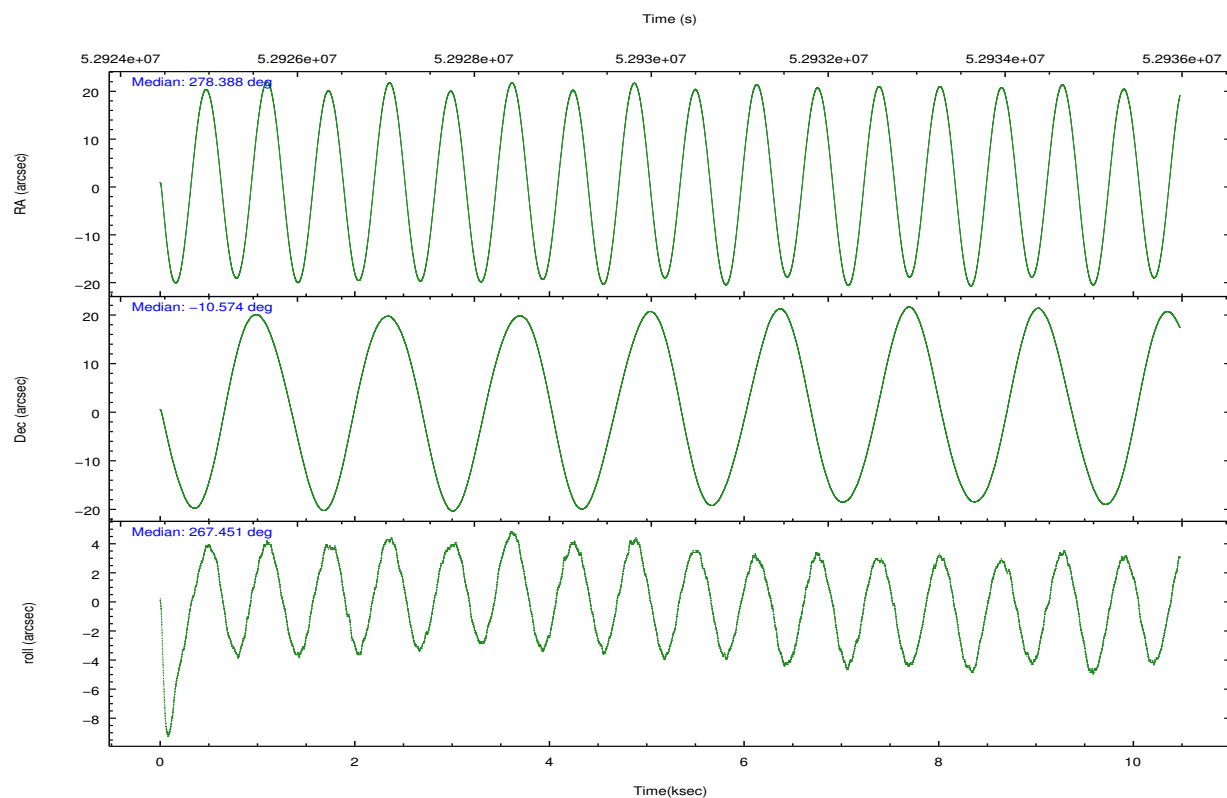
2.2 Compared Parameters

Parameter	Planned	Actual
Instrument	HRC	HRC
Detector	HRC-S	HRC-S
Grating	NONE	NONE
Data mode	OBSERVING	OBSERVING
Observation mode	POINTING	POINTING
Pointing RA	278.374561	278.3886303124033
Pointing Dec	-10.548504	-10.57393388938248
Pointing Roll	267.377089	267.4470086798256
SIM focus pos (mm)	-1.429586	-1.370509375638239
SIM defocus (mm)	0.1037507710433287	0.1628272637660579
SIM translation stage pos (mm)	250.455976	250.466033080201
SIM translation stage offset (mm)	0	-0.01005468664627074
Observation start time	52925452.184000	52924786.07646
Observation start date	1999-09-05T13:29:48	1999-09-05T13:19:46
Observation end time	52935452.184000	52936221.489371
Observation end date	1999-09-05T16:16:28	1999-09-05T16:30:21

Parameter	Planned	Actual
Obspar format version number	6	6
Obspar file type	PREDICTED	ACTUAL
Obspar update status	NONE	UPDATED

2.3 Aspect



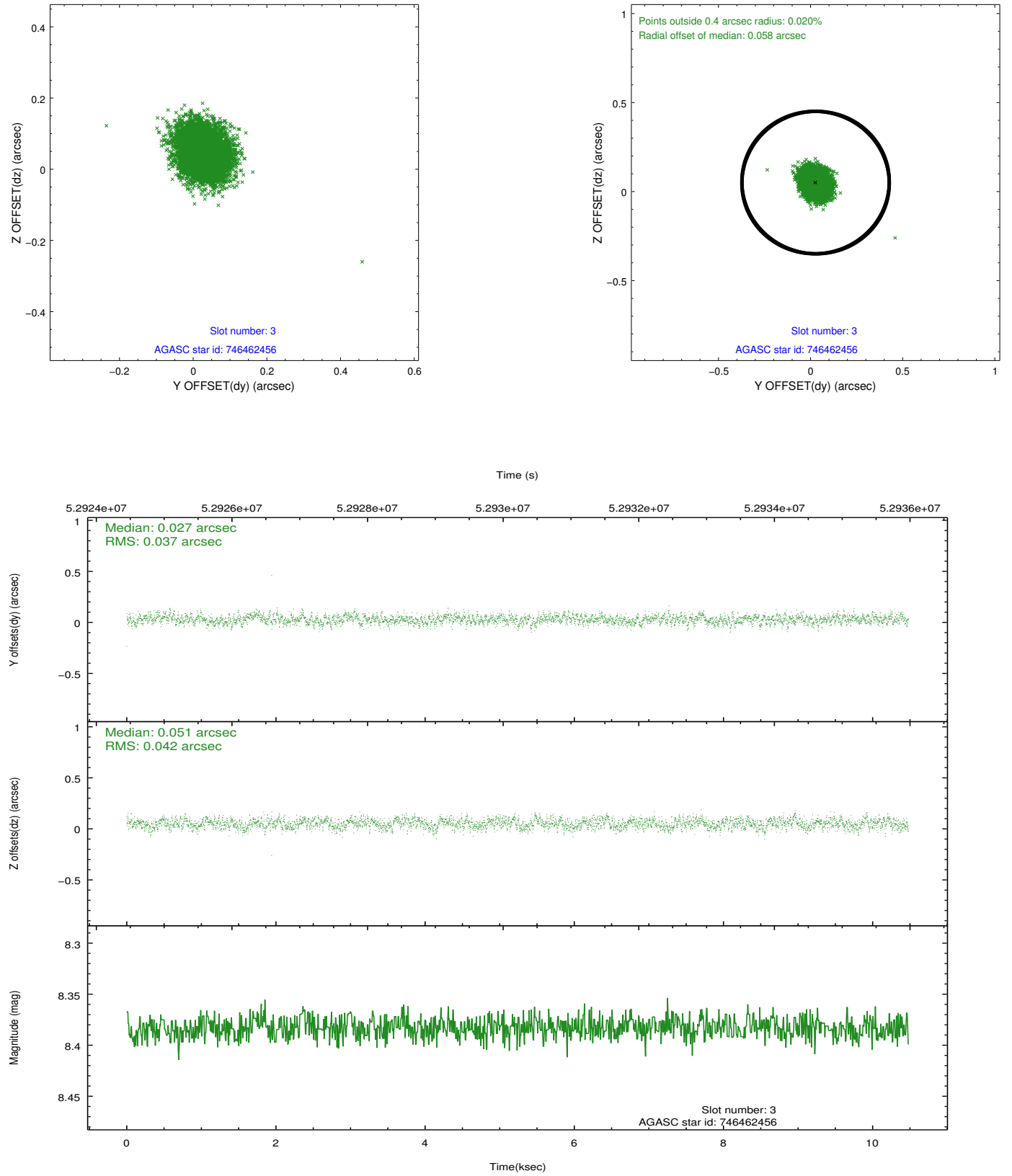


Slot Statistics

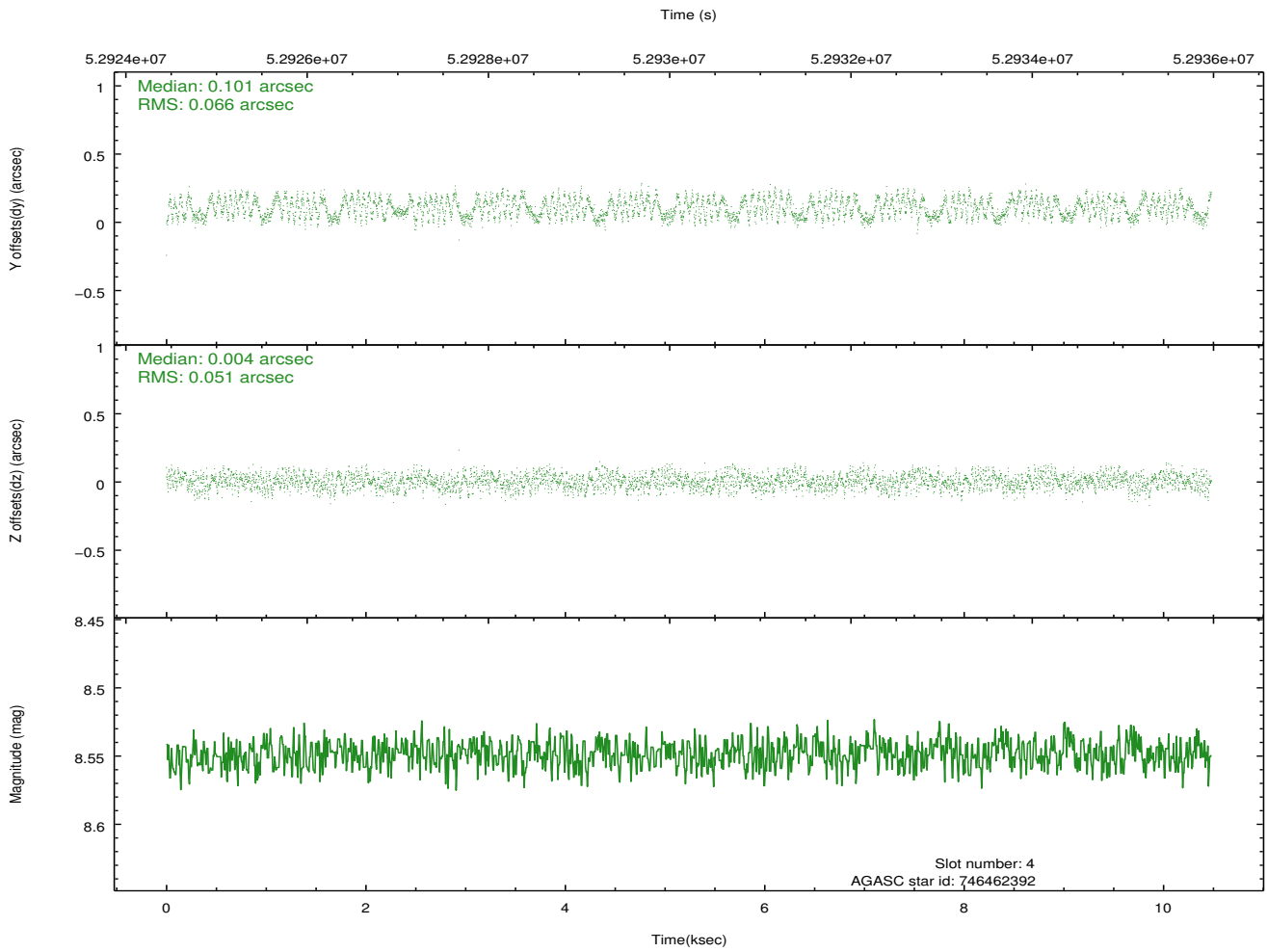
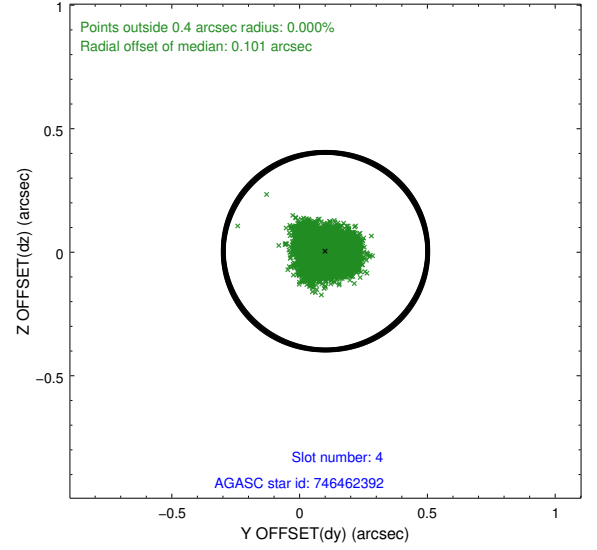
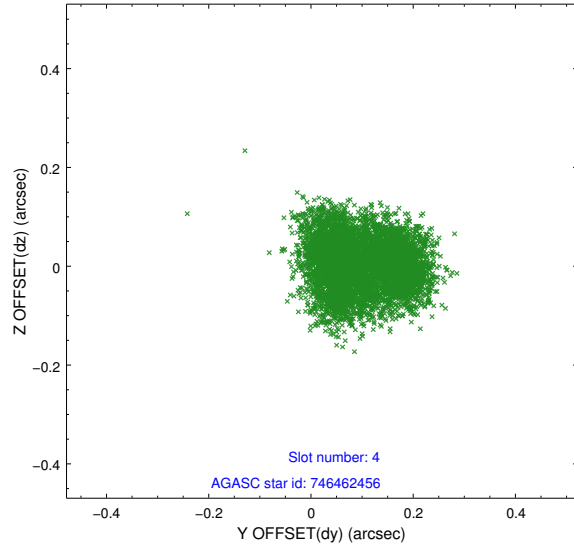
slot	status	id	mag	n_pts	med_dy	med_dz	dr1	dr2	ra	dec	mean_y	mean_z
0	FID	HRC-S-1	6.99	5113	0.151	-0.064	0.006	0.010	0.000000	0.000000	-1153.89	-447.60
1	FID	HRC-S-3	7.01	5113	0.091	-0.124	0.007	0.011	0.000000	0.000000	-1156.76	581.79
2	FID	HRC-S-4	6.98	5113	0.147	-0.109	0.005	0.009	0.000000	0.000000	1244.29	584.26
3	GUIDE	746462456	8.38	5108	0.027	0.051	0.060	0.095	278.652171	-10.530173	-110.51	979.30
4	GUIDE	746462392	8.55	5113	0.101	0.004	0.093	0.132	279.038421	-10.890715	1125.89	2401.74
5	GUIDE	746460272	8.92	5111	-0.075	0.017	0.080	0.123	278.847488	-10.152127	-1500.80	1610.23
6	GUIDE	746460328	9.81	5108	-0.078	-0.084	0.126	0.202	278.603974	-9.898096	-2376.44	706.78
7	GUIDE	746461728	9.80	5107	0.021	0.002	0.118	0.181	278.986921	-10.530755	-161.34	2163.16

2.4 Star Slots

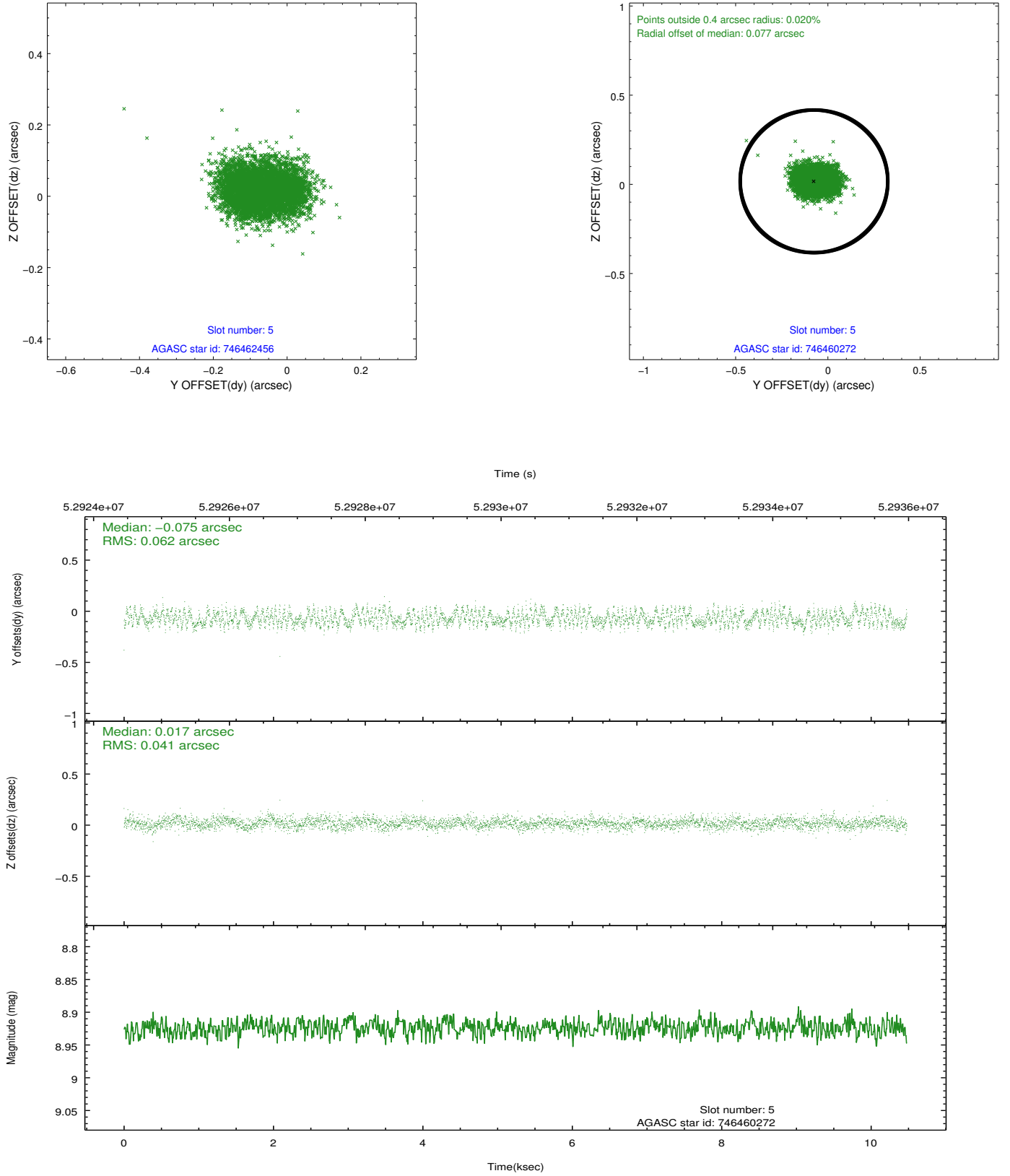
2.4.1 Slot 3



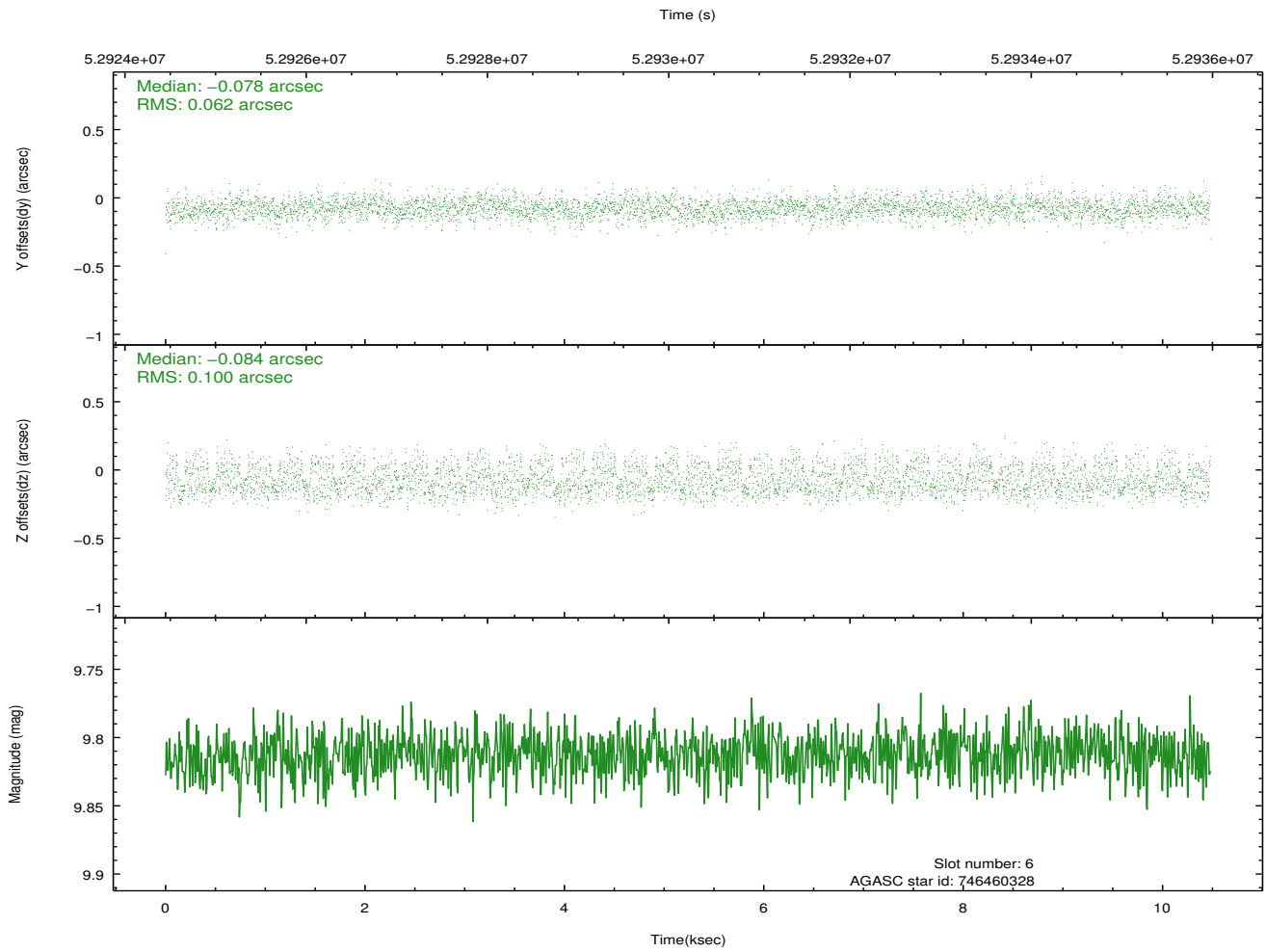
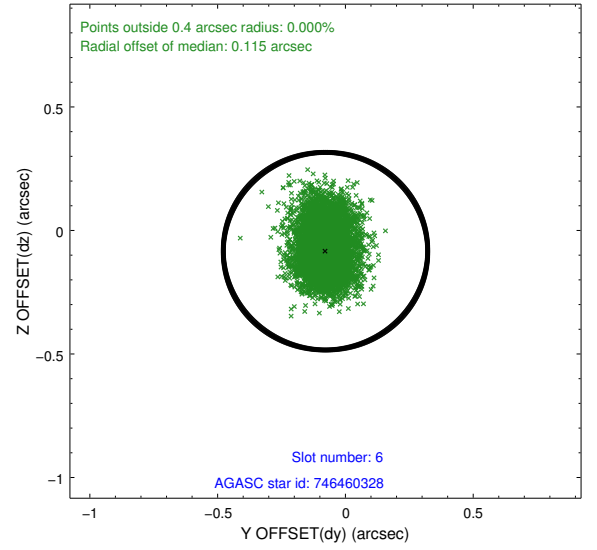
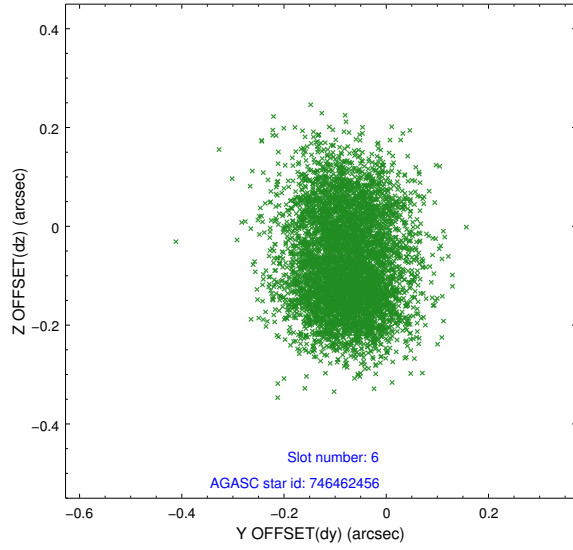
2.4.2 Slot 4



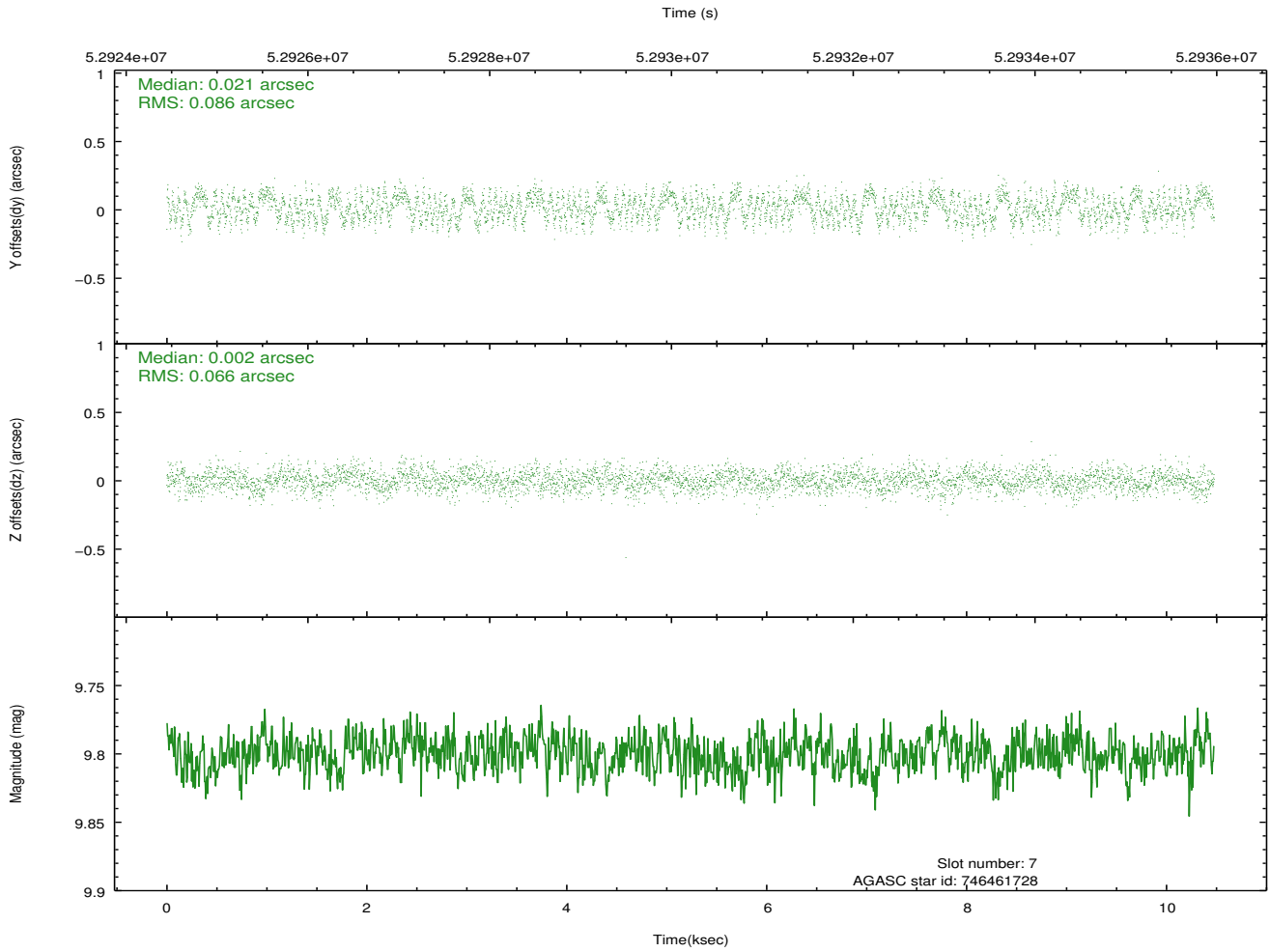
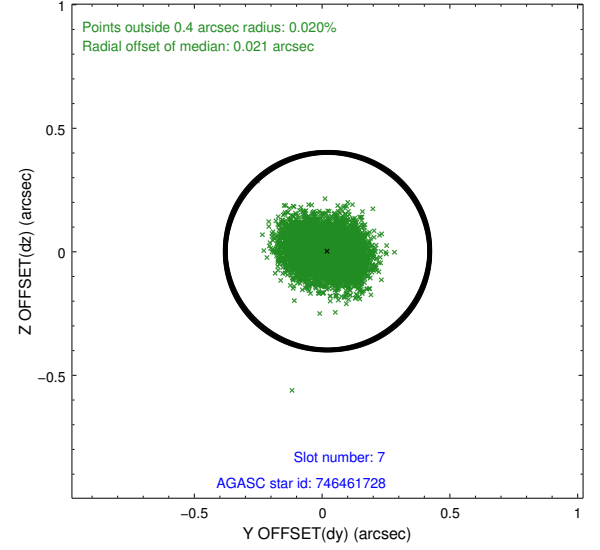
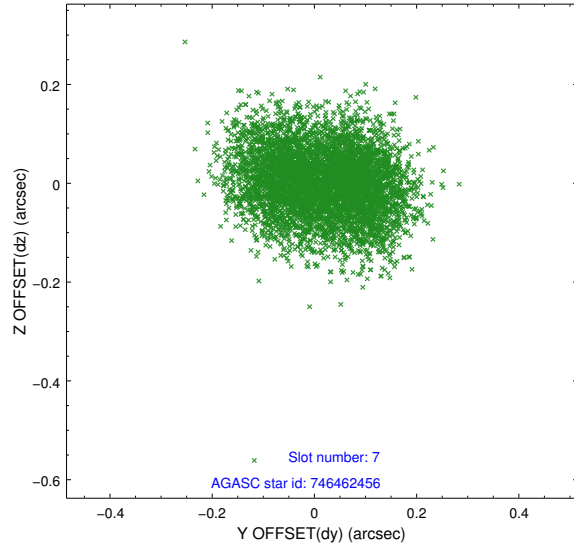
2.4.3 Slot 5



2.4.4 Slot 6

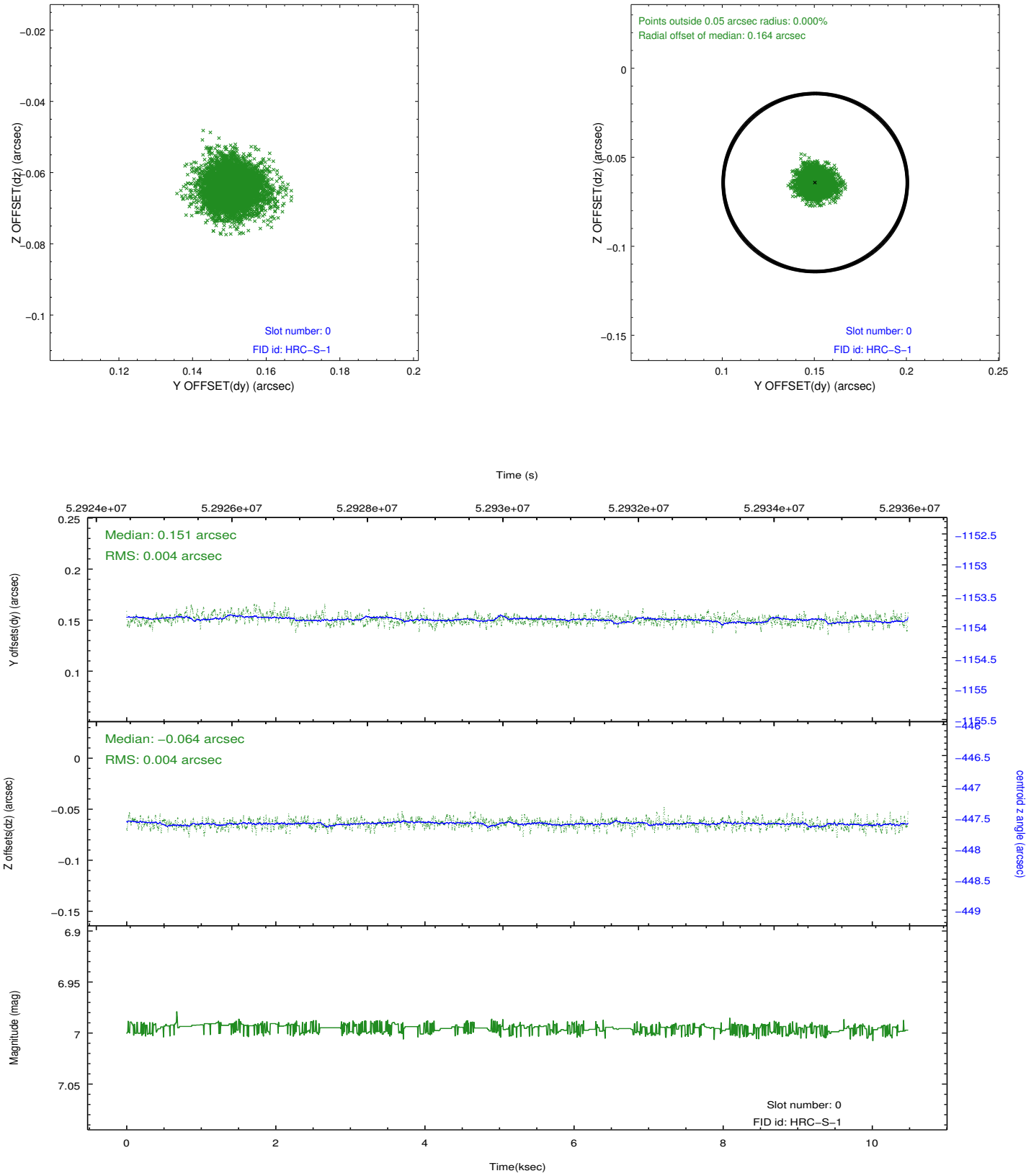


2.4.5 Slot 7

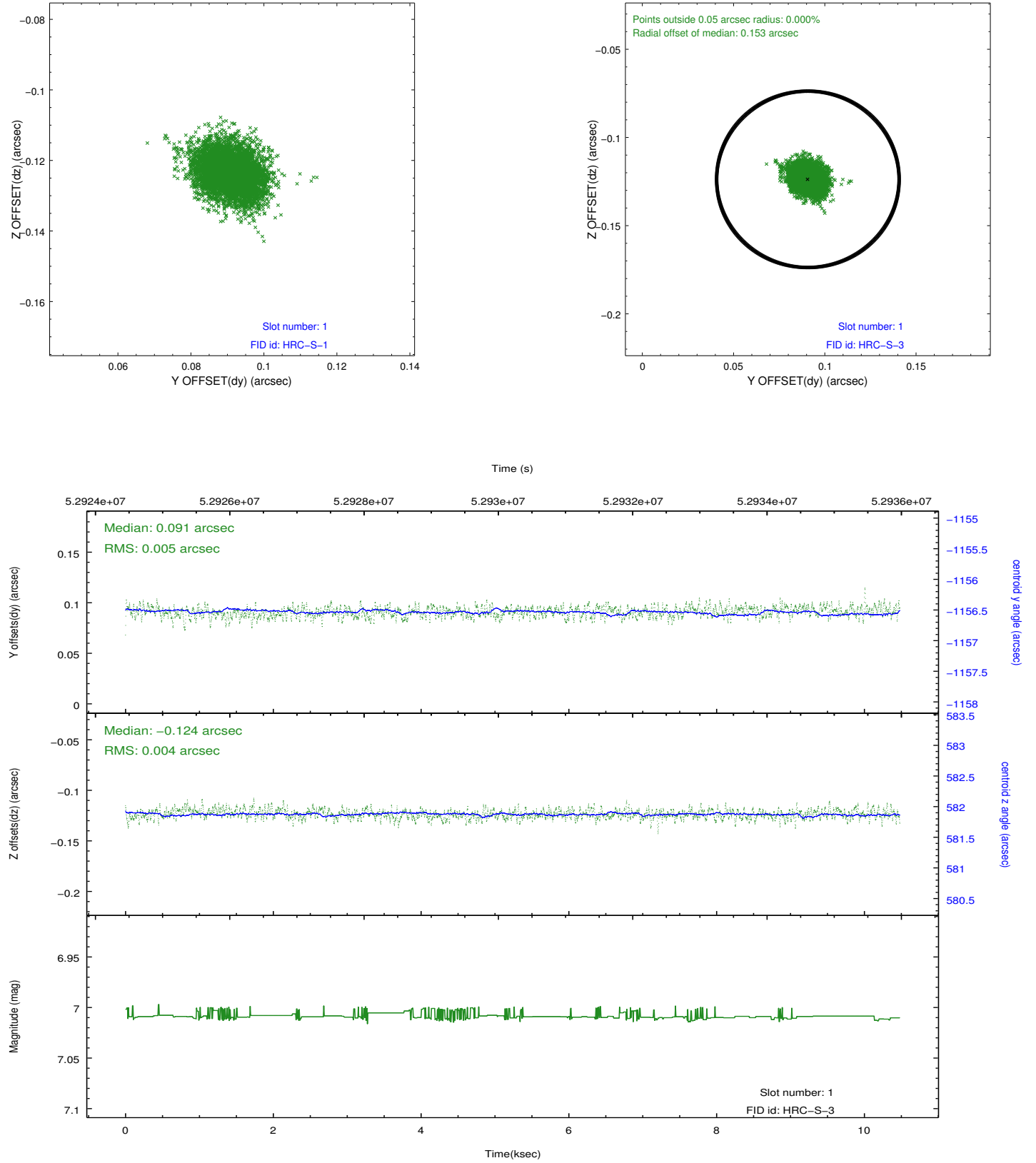


2.5 FID Slots

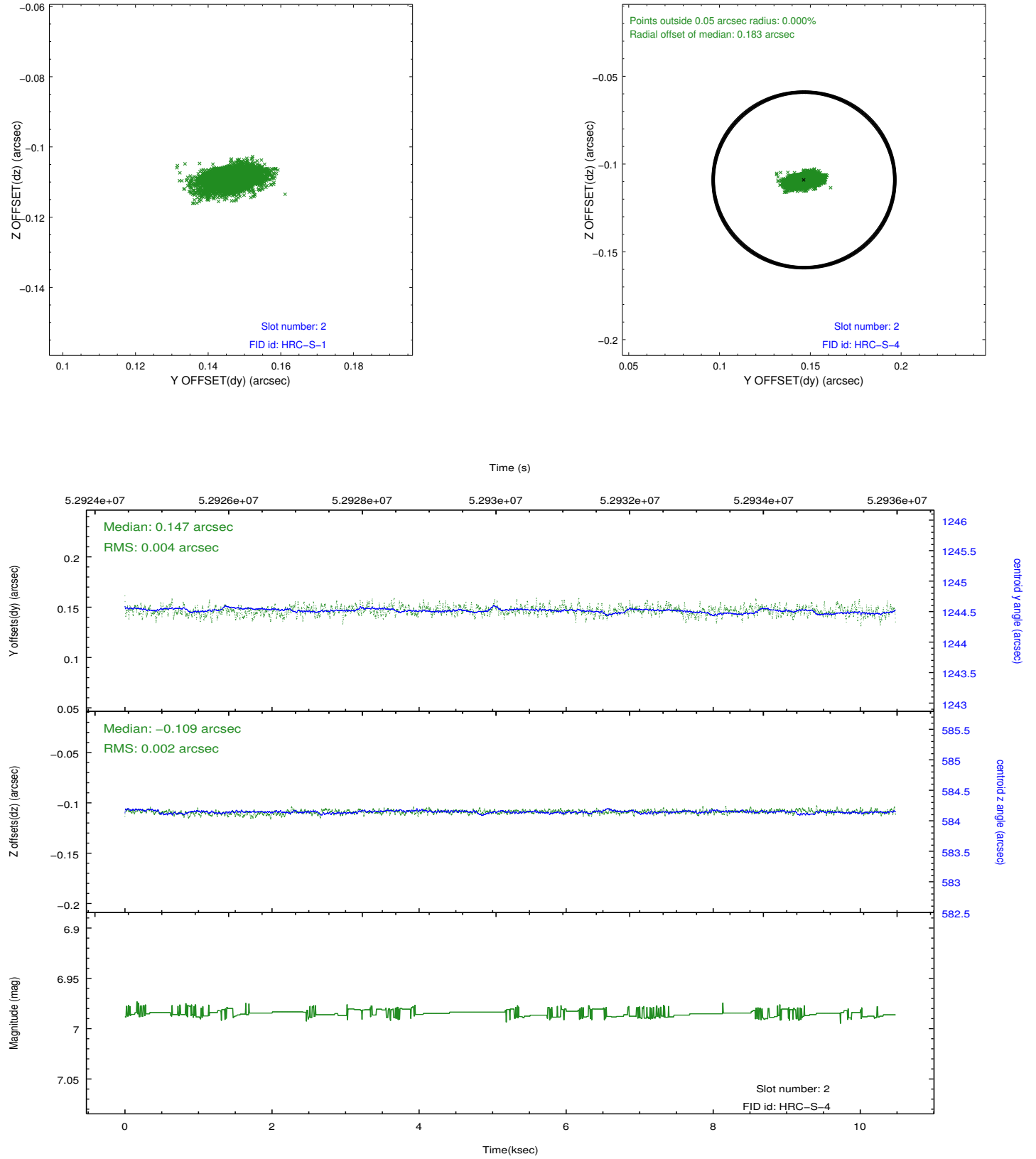
2.5.1 Slot 0



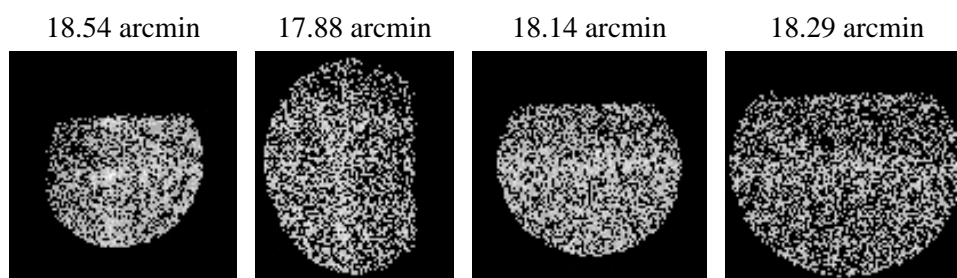
2.5.2 Slot 1



2.5.3 Slot 2



3 Point Sources



A Summary

A.1 Status

V&V Scientist	Joy Nichols
V&V Date (YYYY-MM-DD)	2010.01.29
V&V Edition	1
V&V Disposition and Status	OK
V&V Charge Time	9.721

A.2 Comments

This target is a Standard Candle with well known continuum spectrum. It is used to measure absolute sensitivity and to monitor detector performance.