

# V&V Reference Report

## L2 ASCDS Version : 8.1.1

Observation 1417 - L2 Version 5

Chandra X-Ray Center

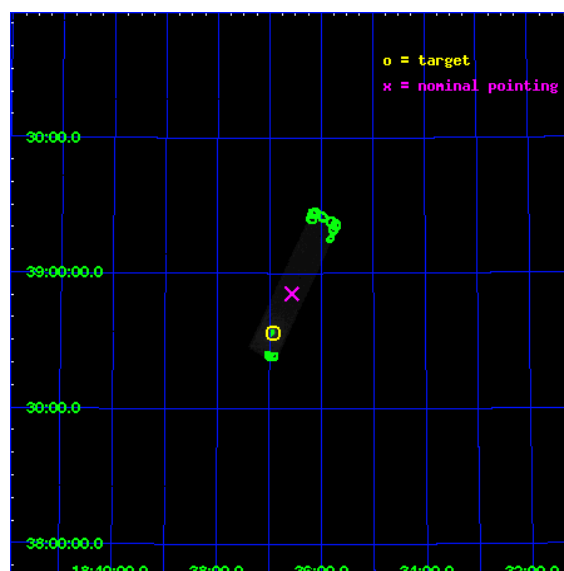
L2 Processing Date : Nov 20 2009

## Contents

<b>1</b>	<b>Front</b>	<b>2</b>
<b>2</b>	<b>OBI</b>	<b>3</b>
2.1	OBI . . . . .	3
2.1.1	Images . . . . .	3
2.1.2	Parameters . . . . .	4
2.1.3	Events . . . . .	4
2.2	Compared Parameters . . . . .	5
2.3	Aspect . . . . .	6
2.4	Star Slots . . . . .	9
2.4.1	Slot 3 . . . . .	9
2.4.2	Slot 4 . . . . .	10
2.4.3	Slot 5 . . . . .	11
2.4.4	Slot 6 . . . . .	12
2.4.5	Slot 7 . . . . .	13
2.5	FID Slots . . . . .	14
2.5.1	Slot 0 . . . . .	14
2.5.2	Slot 1 . . . . .	15
2.5.3	Slot 2 . . . . .	16
<b>3</b>	<b>Point Sources</b>	<b>17</b>
<b>A</b>	<b>Summary</b>	<b>18</b>
A.1	Status . . . . .	18
A.2	Comments . . . . .	18

# 1 Front

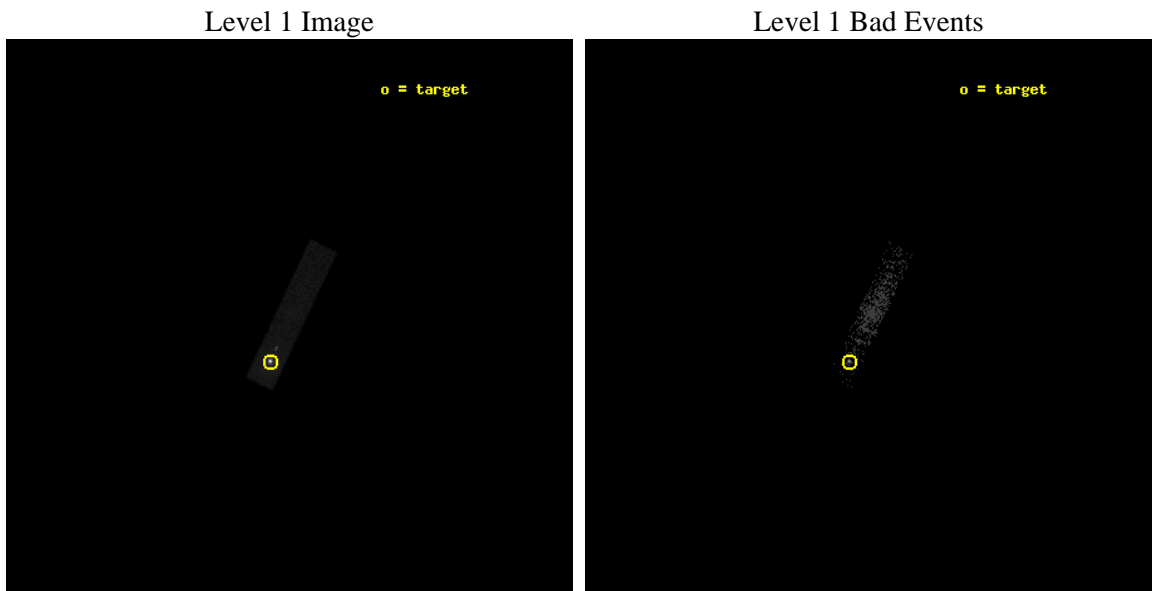
seq_num	280367	Sequence number
obs_id	1417	Observation id
title	TEST OF UV SENSITIVITY	Proposal title
observer	Dr. CXC Calibration	Principal investigator
object	VEGA	Source name
ra_targ	279.230833	Observer's specified target RA
dec_targ	38.7795	Observer's specified target Dec
ra_nom	279.14205533133	Nominal RA
dec_nom	38.925149521421	Nominal Dec
roll_nom	295.23036857767	Nominal Roll
revision	5	Processing version of data
ontime	3203.3813655674	[s]
livetime	1869.2956178846	Ontime multiplied by DTCOR
l2events	557453	Number of level 2 events



## 2 OBI

### 2.1 OBI

#### 2.1.1 Images



2.1.2 Parameters

obi_num	0	Obi number	sched_exp_time	3000.000000	Scheduled observation exposure time
ascdsver	8.1.1	Processing system revision	ontime	3203.3813655674	[s]
caldbver	4.1.4	&#160	l1events	599205	Number of level 1 events
date	2009-11-20T18:50:44	Date and time of file creation			
revision	4	Processing version of data			

2.1.3 Events

Level 1 Events

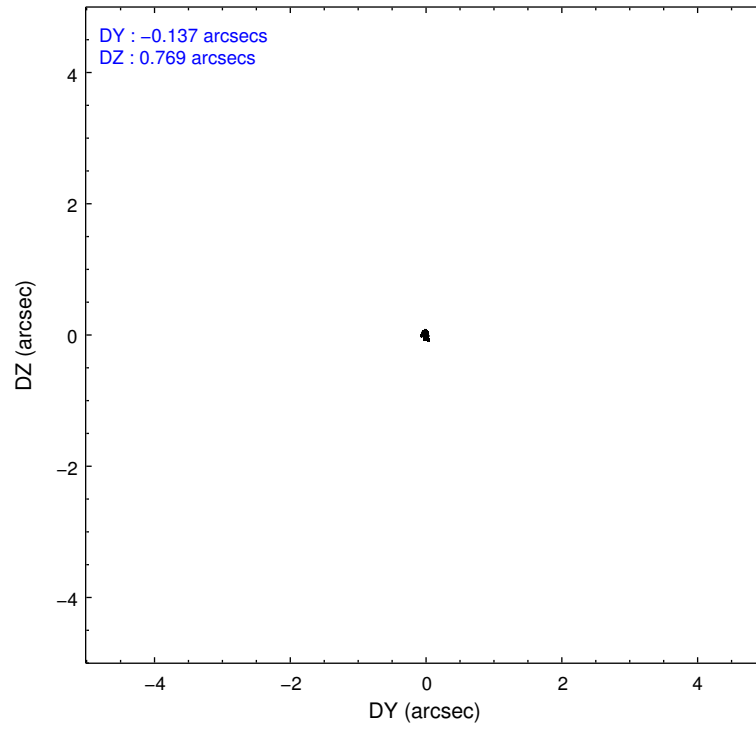
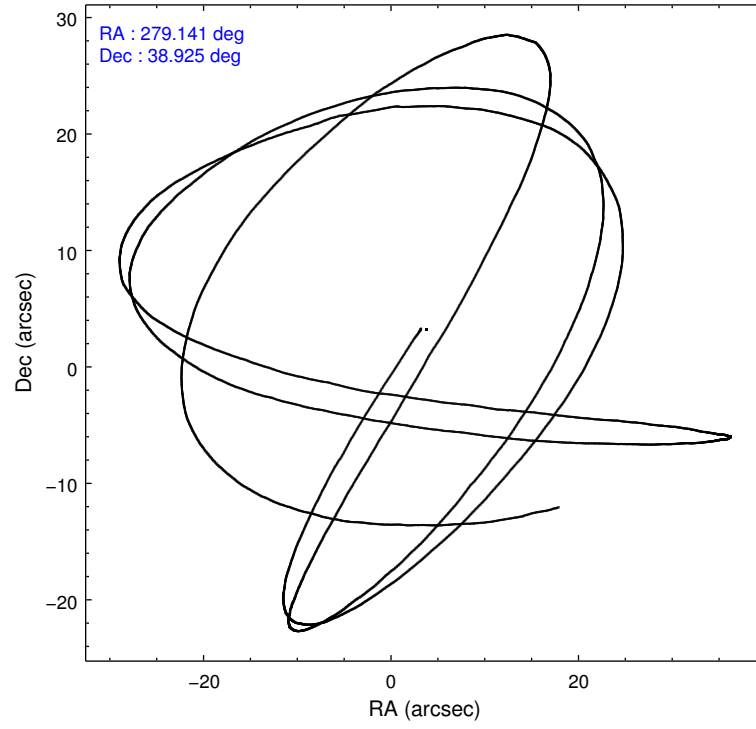
	segment 1	segment 2	segment 3
level 1 events	0	599205	0
rejected events	0	32184	0
rejected %	0%	5%	0%

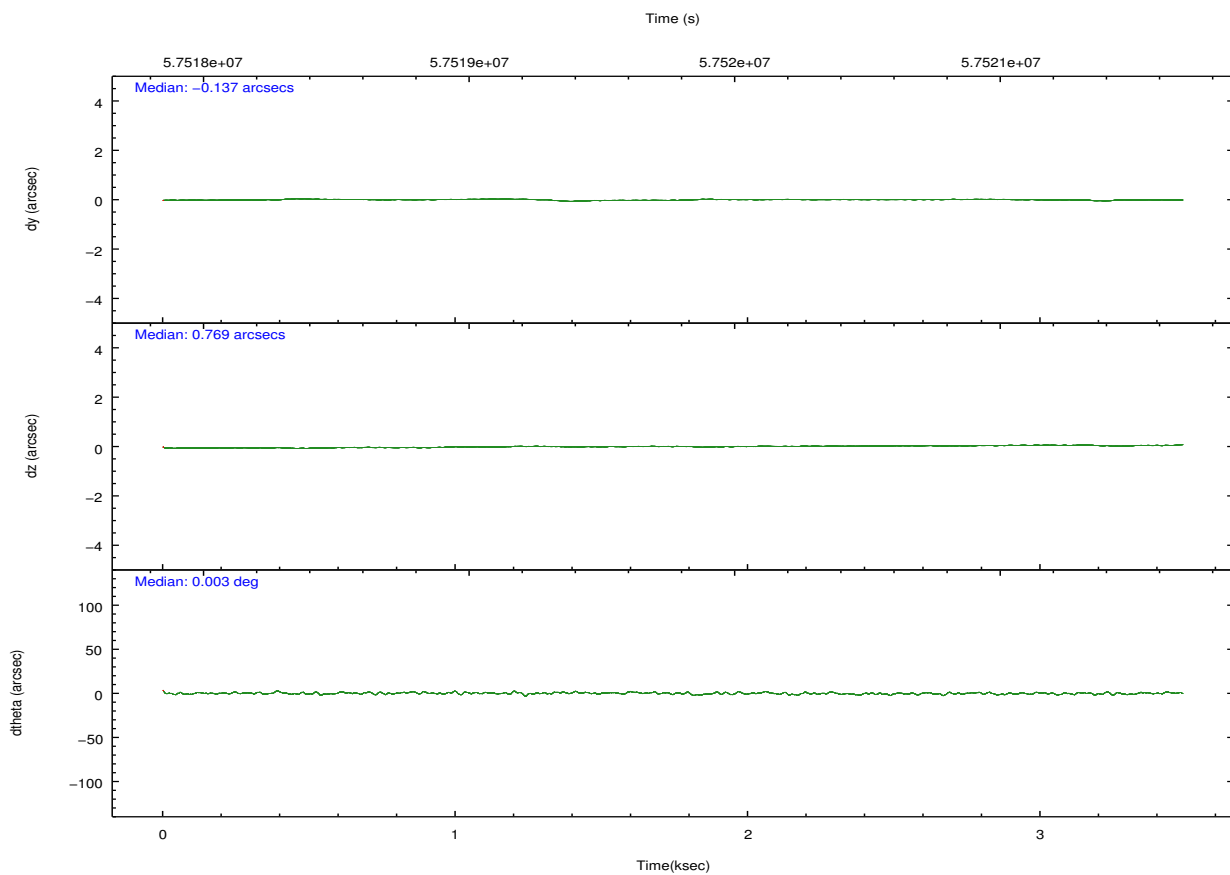
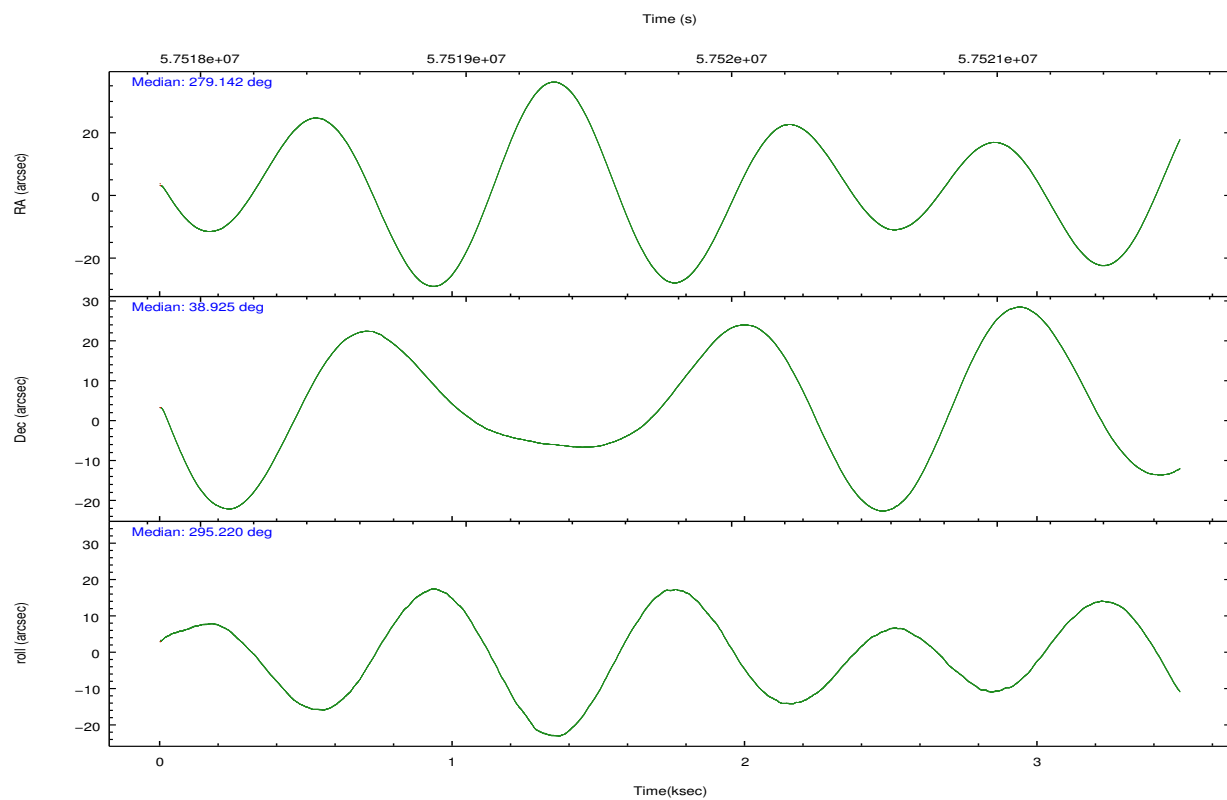
## 2.2 Compared Parameters

Parameter	Planned	Actual
Instrument	HRC	HRC
Detector	HRC-S	HRC-S
Grating	NONE	NONE
Data mode	OBSERVING	OBSERVING
Observation mode	POINTING	POINTING
Pointing RA	279.111122	279.1420553313256
Pointing Dec	38.941221	38.92514952142111
Pointing Roll	295.182471	295.2303685776726
SIM focus pos (mm)	-1.536095	-1.608774427437079
SIM defocus (mm)	-0.002758228956671258	-0.07543778803278212
SIM translation stage pos (mm)	250.455976	250.466033080201
SIM translation stage offset (mm)	0	-0.01005468664627074
Observation start time	57518513.184000	57517847.122032
Observation start date	1999-10-28T17:20:49	1999-10-28T17:10:47
Observation end time	57521513.184000	57521646.797169
Observation end date	1999-10-28T18:10:49	1999-10-28T18:14:06

Parameter	Planned	Actual
Obspar format version number	6	6
Obspar file type	PREDICTED	ACTUAL
Obspar update status	NONE	UPDATED

## 2.3 Aspect



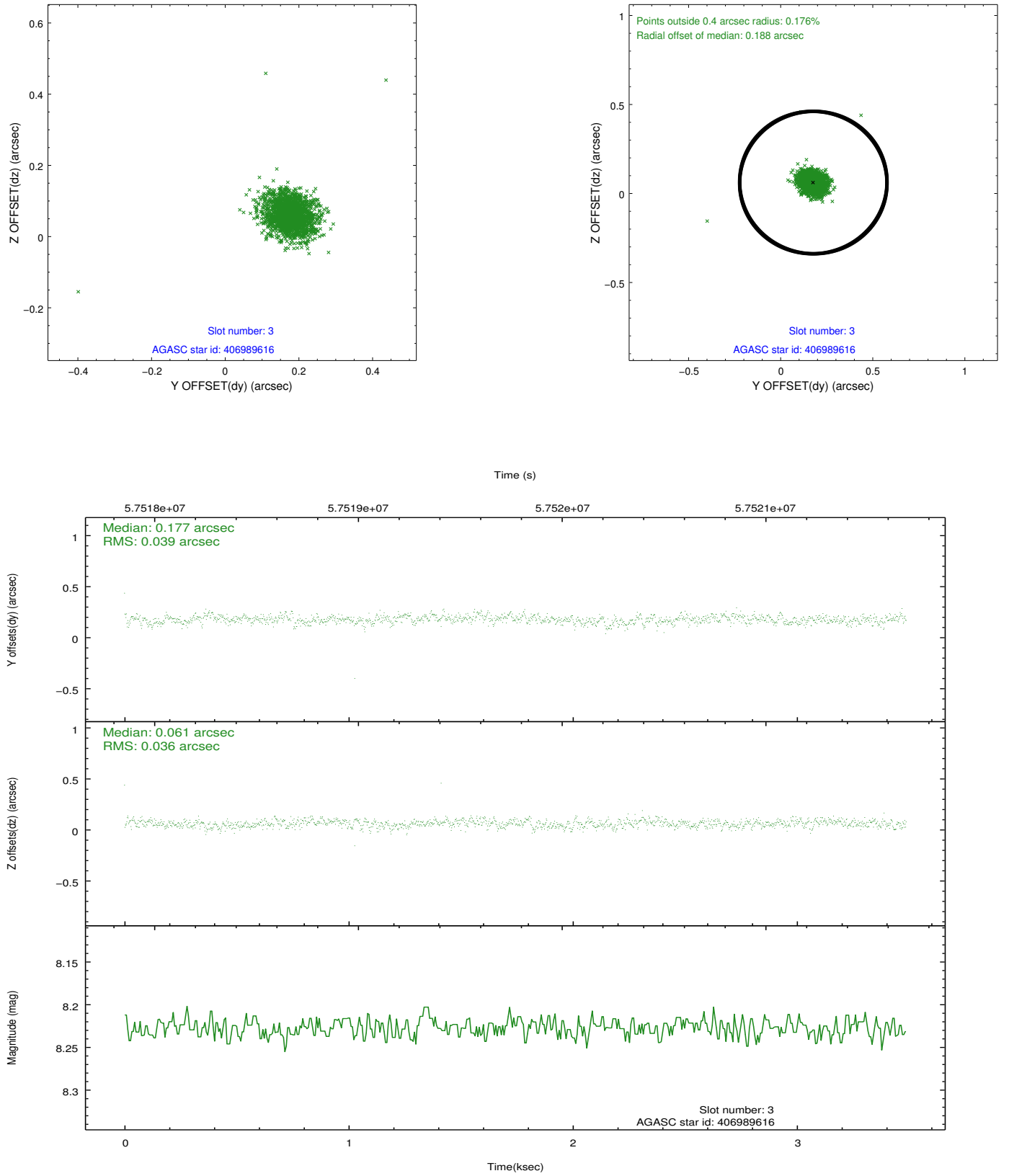


Slot Statistics

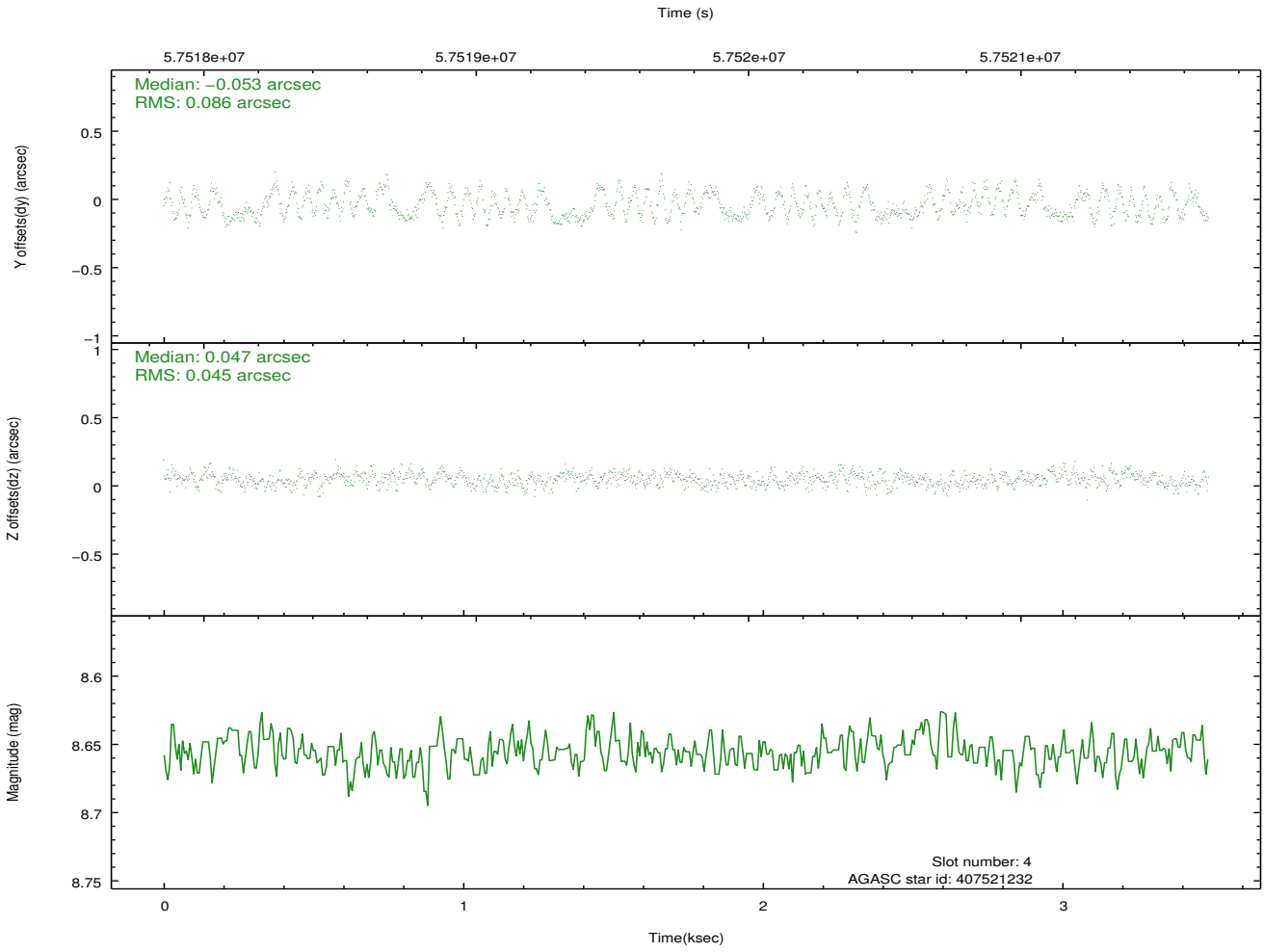
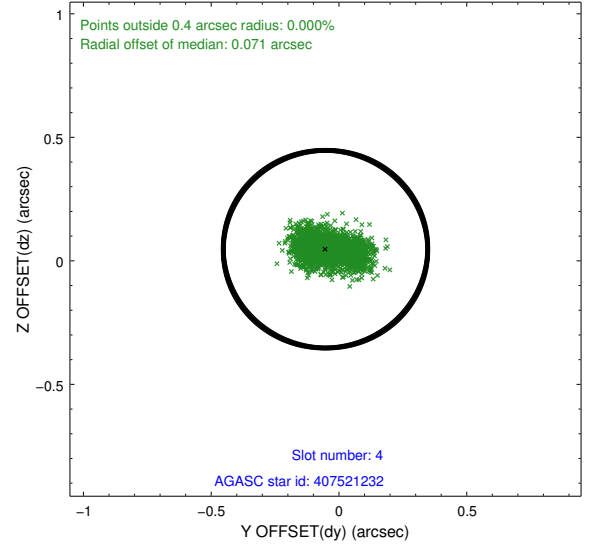
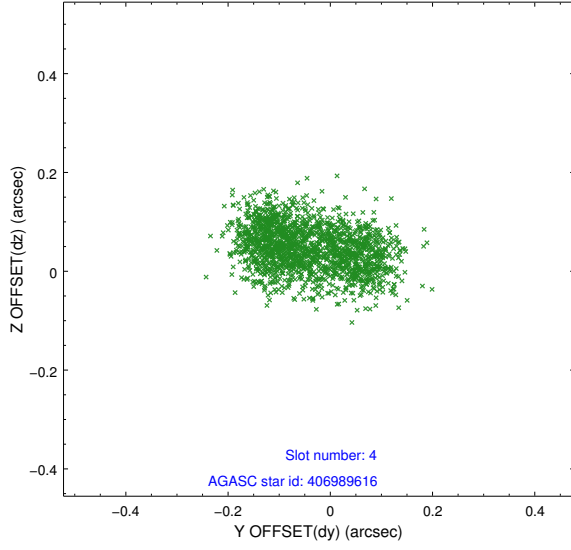
slot	status	id	mag	n_pts	med_dy	med_dz	dr1	dr2	ra	dec	mean_y	mean_z
0	FID	HRC-S-1	6.98	1702	0.150	-0.118	0.006	0.010	0.000000	0.000000	-1153.85	-448.98
1	FID	HRC-S-3	7.00	1701	0.102	-0.070	0.007	0.011	0.000000	0.000000	-1157.19	580.31
2	FID	HRC-S-4	6.96	1702	0.136	-0.109	0.004	0.009	0.000000	0.000000	1243.78	583.19
3	GUIDE	406989616	8.23	1702	0.177	0.061	0.052	0.085	279.202881	38.520843	1479.48	-407.74
4	GUIDE	407521232	8.66	1701	-0.053	0.047	0.105	0.162	279.628883	39.431715	-988.80	2057.51
5	GUIDE	406985256	8.63	1702	-0.131	-0.089	0.061	0.099	278.693335	38.842203	-178.94	-1207.63
6	GUIDE	406987712	9.77	1702	0.016	-0.049	0.118	0.185	278.575925	38.383014	1172.12	-2218.60
7	GUIDE	407518008	9.82	1699	-0.012	0.031	0.146	0.225	279.525308	39.586399	-1615.20	2029.74

## 2.4 Star Slots

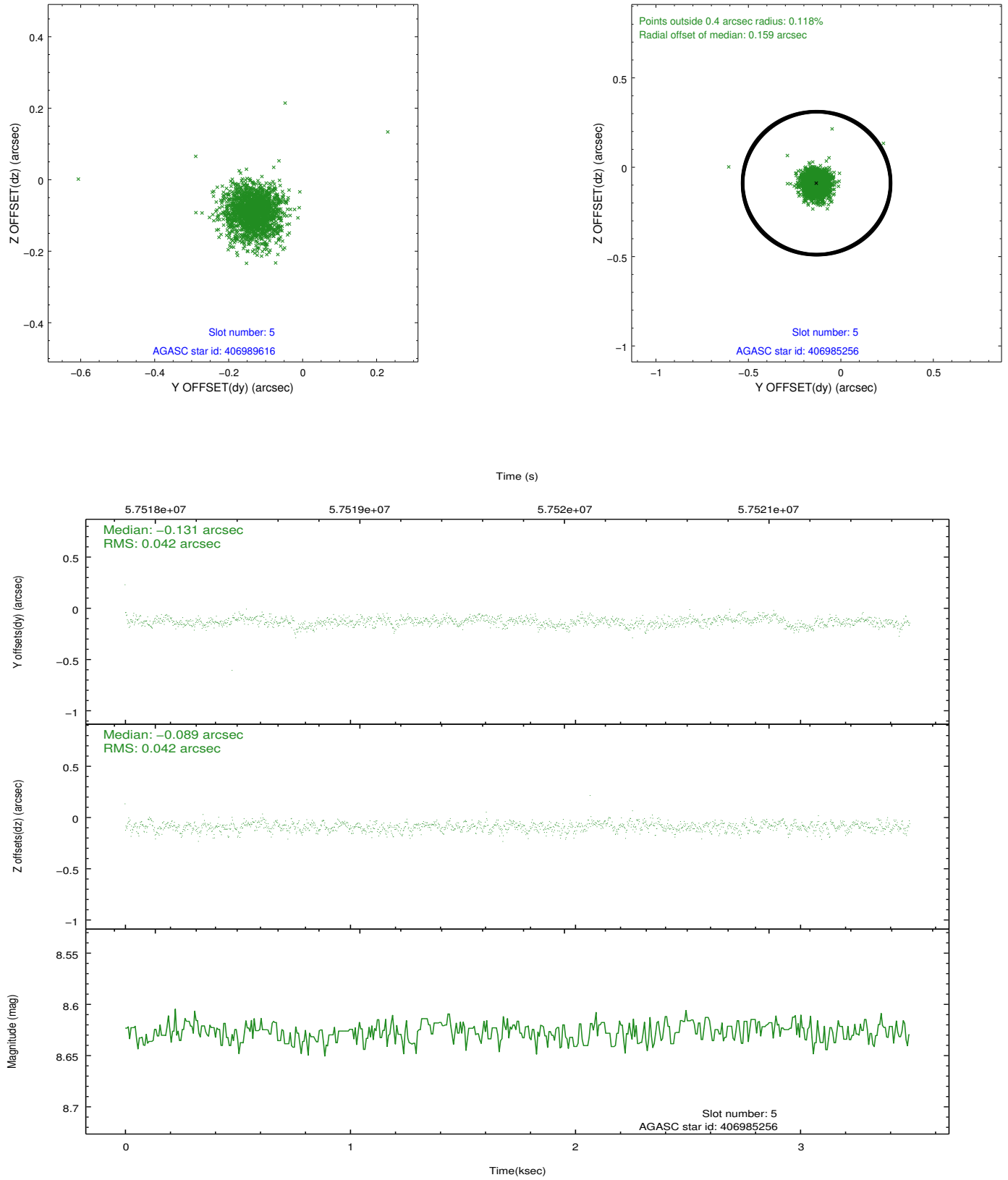
### 2.4.1 Slot 3



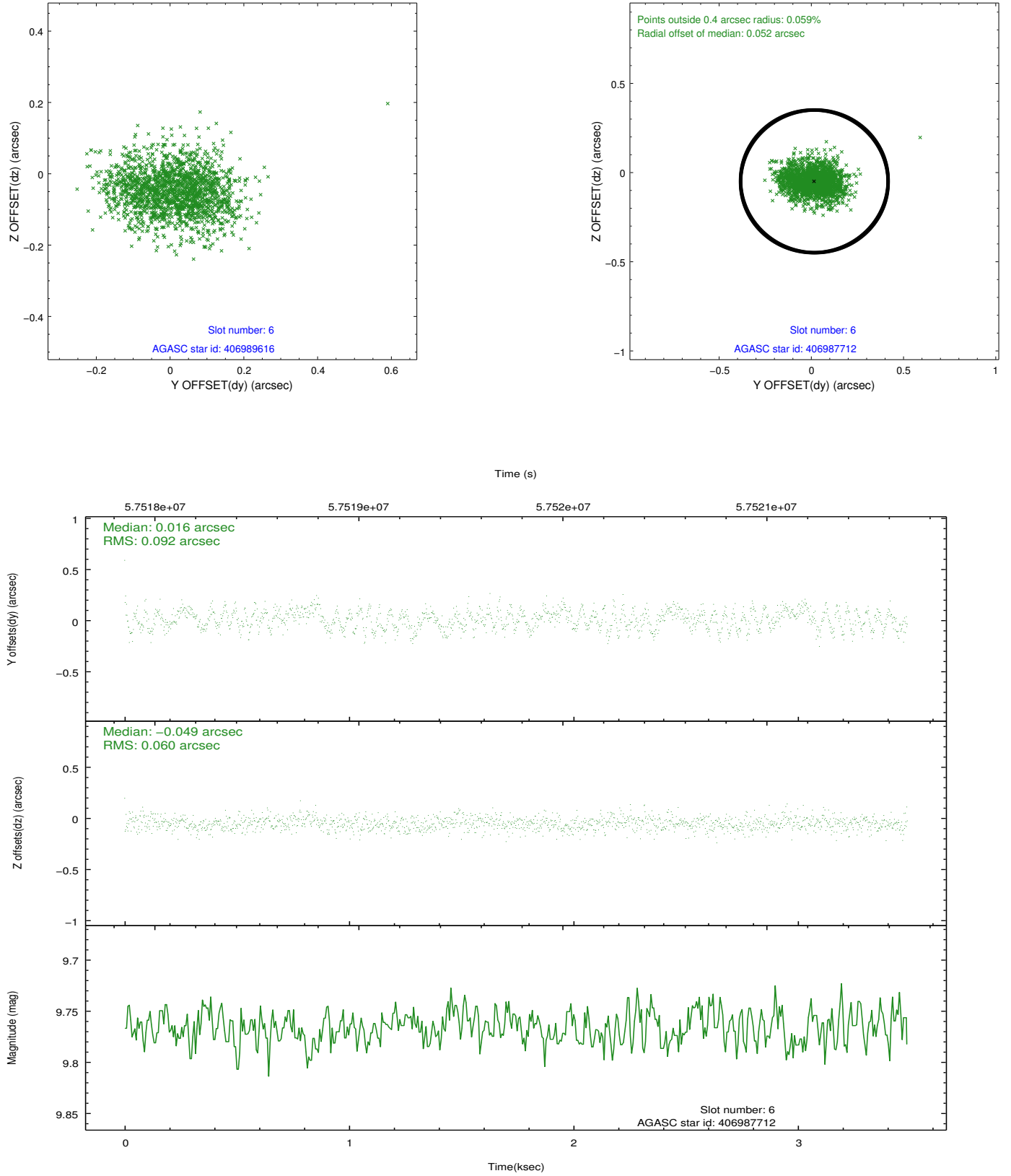
## 2.4.2 Slot 4



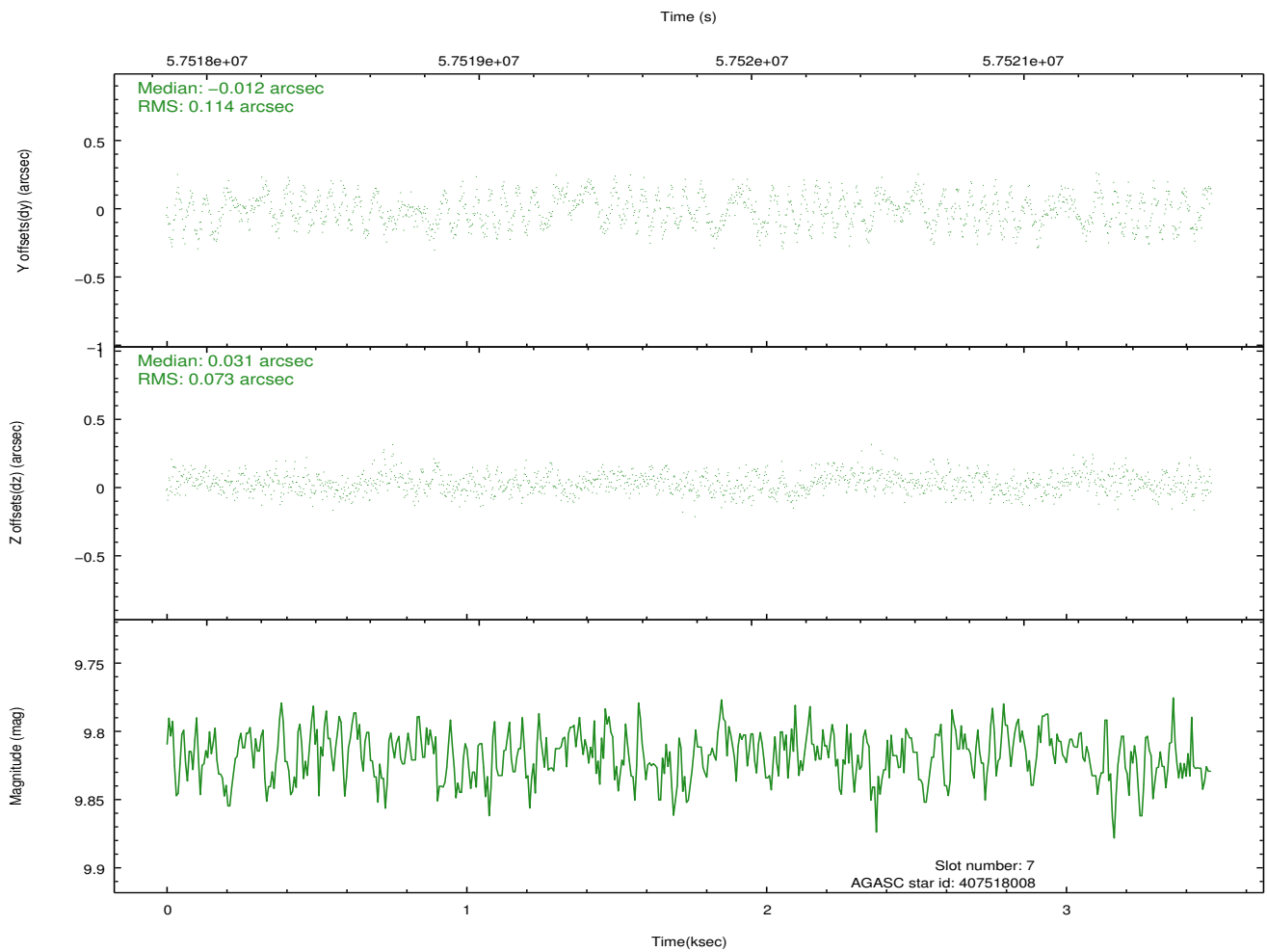
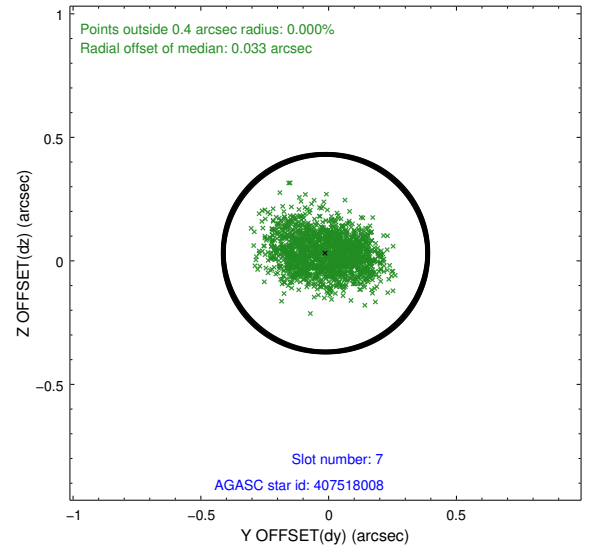
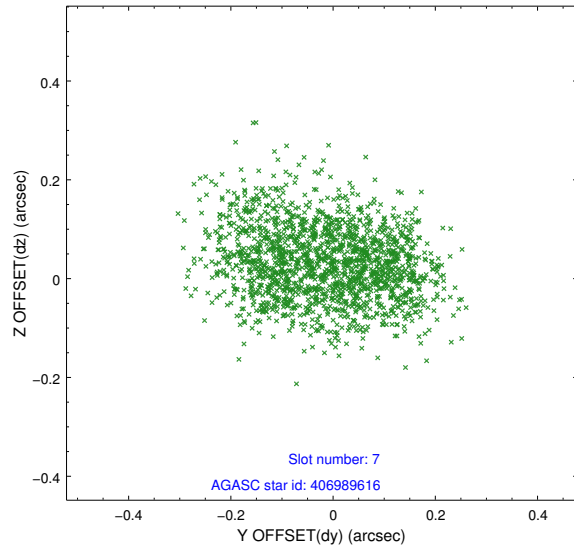
### 2.4.3 Slot 5



## 2.4.4 Slot 6

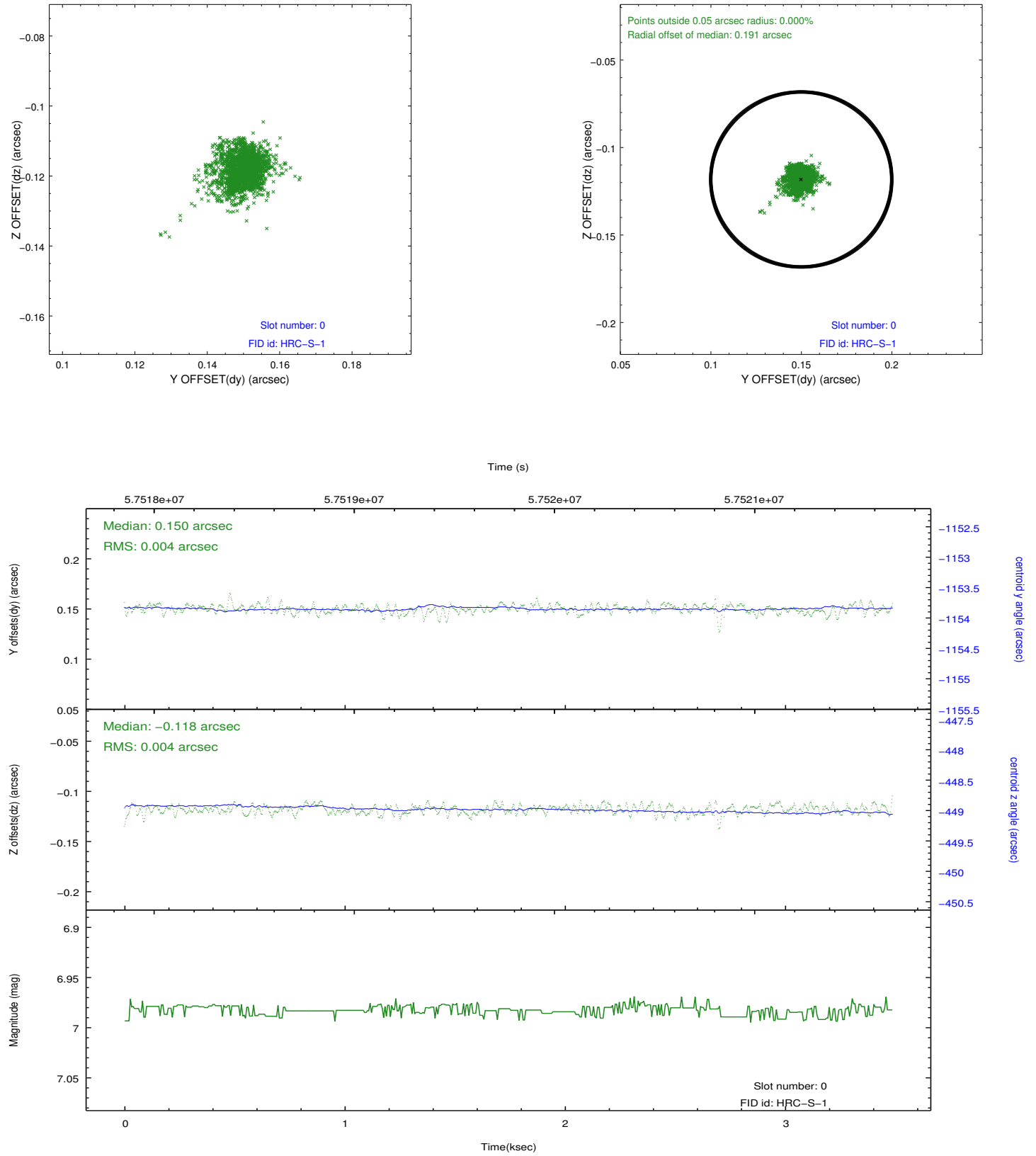


## 2.4.5 Slot 7

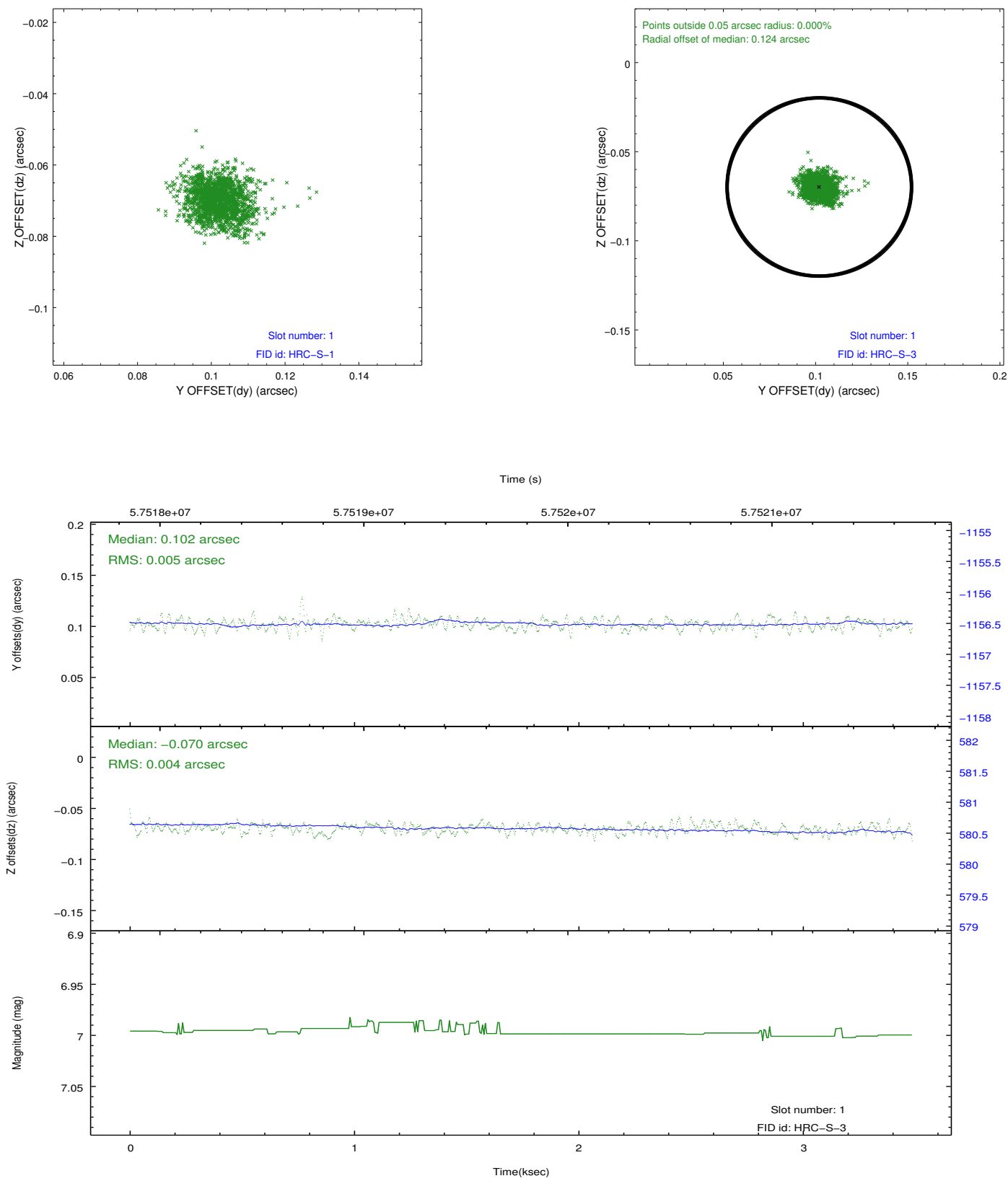


## 2.5 FID Slots

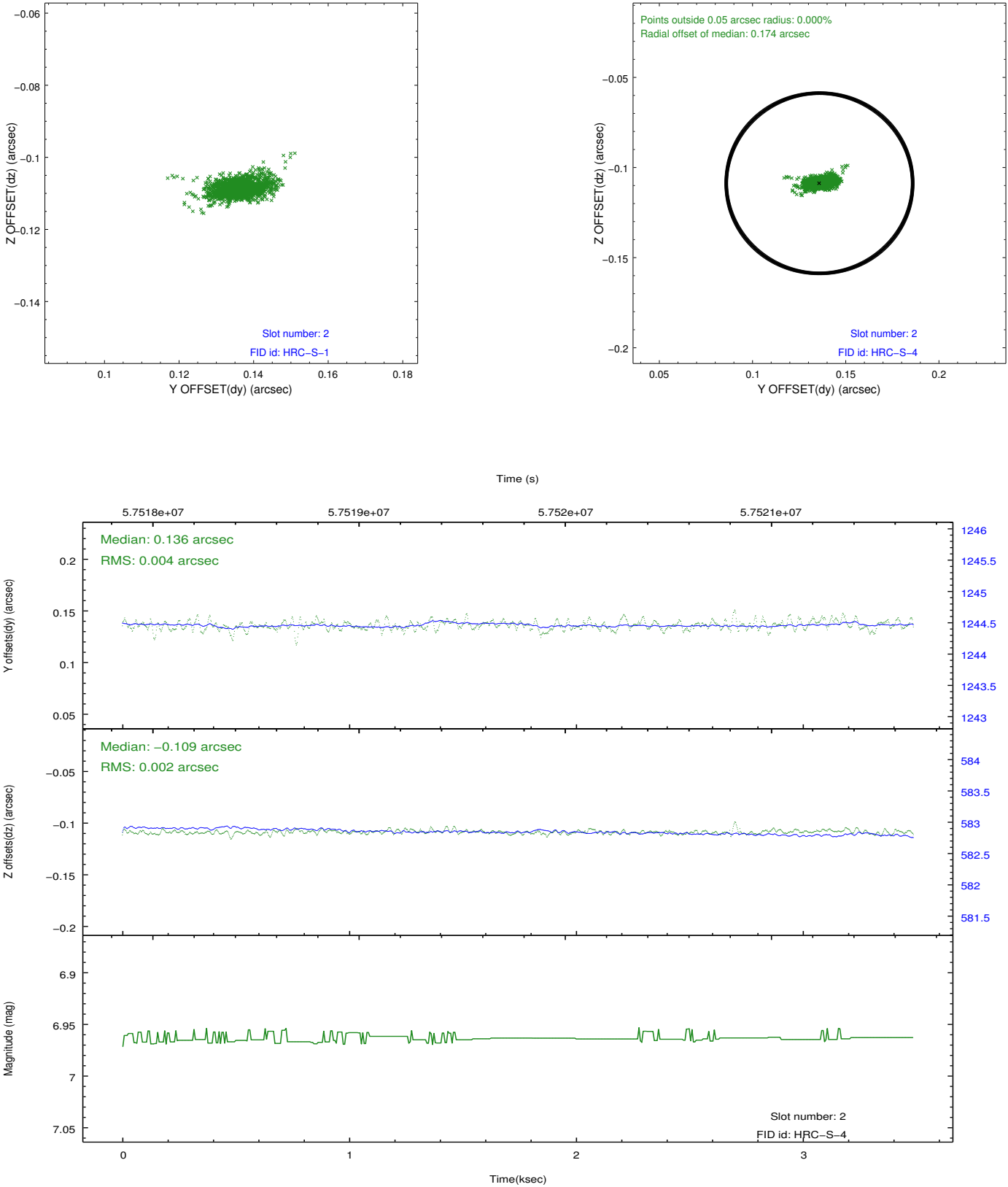
### 2.5.1 Slot 0



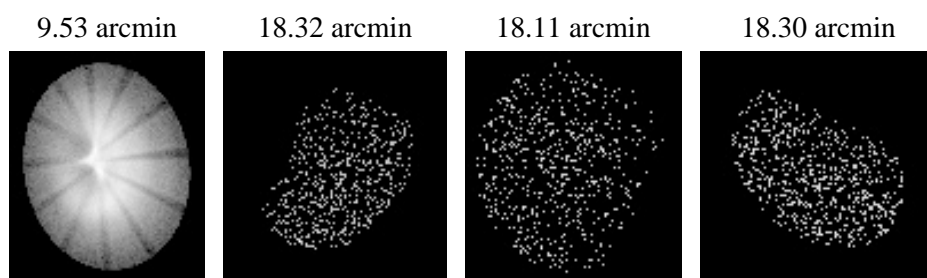
2.5.2 Slot 1



2.5.3 Slot 2



### 3 Point Sources



## A Summary

### A.1 Status

V&V Scientist	Joy Nichols
V&V Date (YYYY-MM-DD)	2009.12.01
V&V Edition	1
V&V Disposition and Status	OK
V&V Charge Time	3.203

### A.2 Comments