

V&V Reference Report

L2 ASCDS Version : 8.4.5

Observation 14017 - L2 Version 2
Chandra X-Ray Center

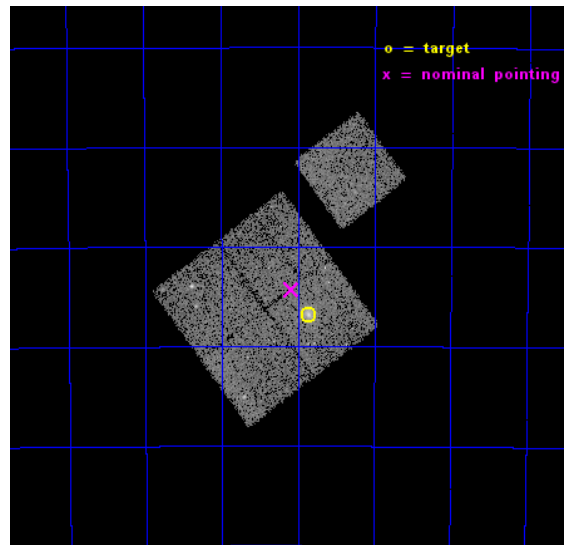
L2 Processing Date : Nov 29 2014

Contents

1	Front	2
2	OBI	3
2.1	OBI	3
2.1.1	Images	3
2.1.2	Bias	3
2.1.3	Parameters	4
2.1.4	Events	4
2.2	Compared Parameters	5
2.3	Aspect	6
2.4	Star Slots	9
2.4.1	Slot 3	9
2.4.2	Slot 4	10
2.4.3	Slot 5	11
2.4.4	Slot 6	12
2.4.5	Slot 7	13
2.5	FID Slots	14
2.5.1	Slot 0	14
2.5.2	Slot 1	15
2.5.3	Slot 2	16
A	Summary	17
A.1	Status	17
A.2	Comments	17

1 Front

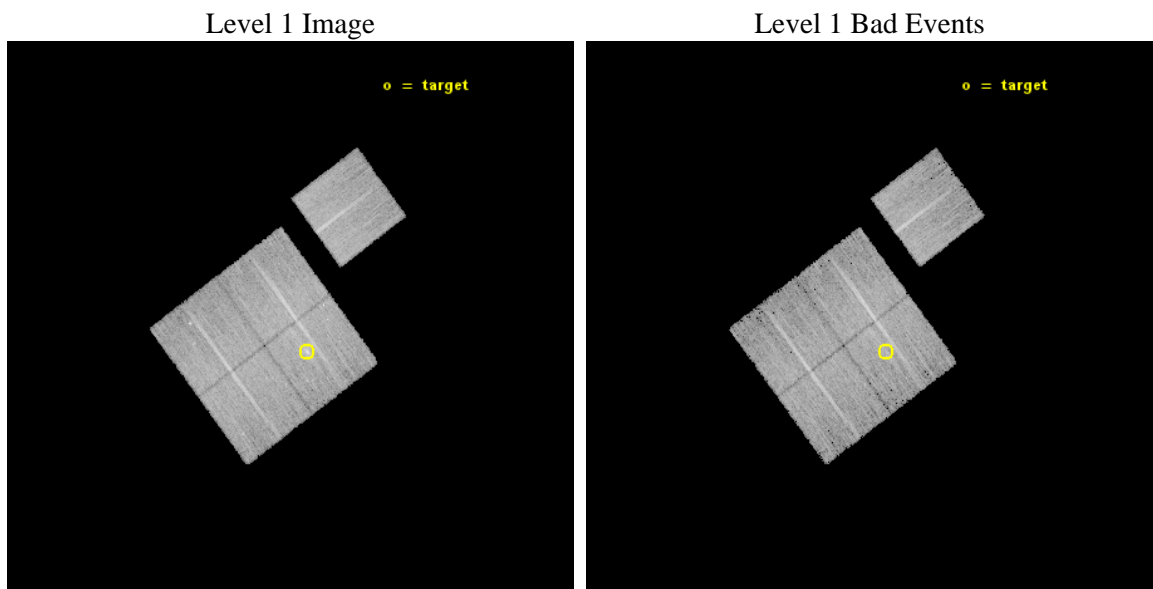
seq_num	801197	Sequence number
obs_id	14017	Observation id
title	A DETAILED CHANDRA/HST STUDY OF THE FIRST z approx 1 CLUSTER BLINDLY DISCOVERED IN THE PLANCK ALL SKY SURVEY	Proposal title
observer	Dr. Pasquale Mazzotta	Principal investigator
object	PLCKG266.6-27.3	Source name
dtcycle	0	
cycle	P	events from which exps? Prim/Second/Both
ra_targ	93.966667	Observer's specified target RA [deg]
dec_targ	-57.781	Observer's specified target Dec [deg]
ra_nom	94.021461527843	Nominal RA [deg]
dec_nom	-57.738123109107	Nominal Dec [deg]
roll_nom	53.255047758548	Nominal Roll [deg]
revision	2	Processing version of data
ontime	15205.459126651	Sum of GTIs [s]
livetime	15006.788609065	Livetime [s]
ontime0	15205.459146619	Sum of GTIs [s]
ontime1	15208.600116968	Sum of GTIs [s]
ontime2	15208.600116968	Sum of GTIs [s]
ontime3	15205.459126651	Sum of GTIs [s]
ontime6	15208.600116968	Sum of GTIs [s]
l2events	44079	Number of level 2 events



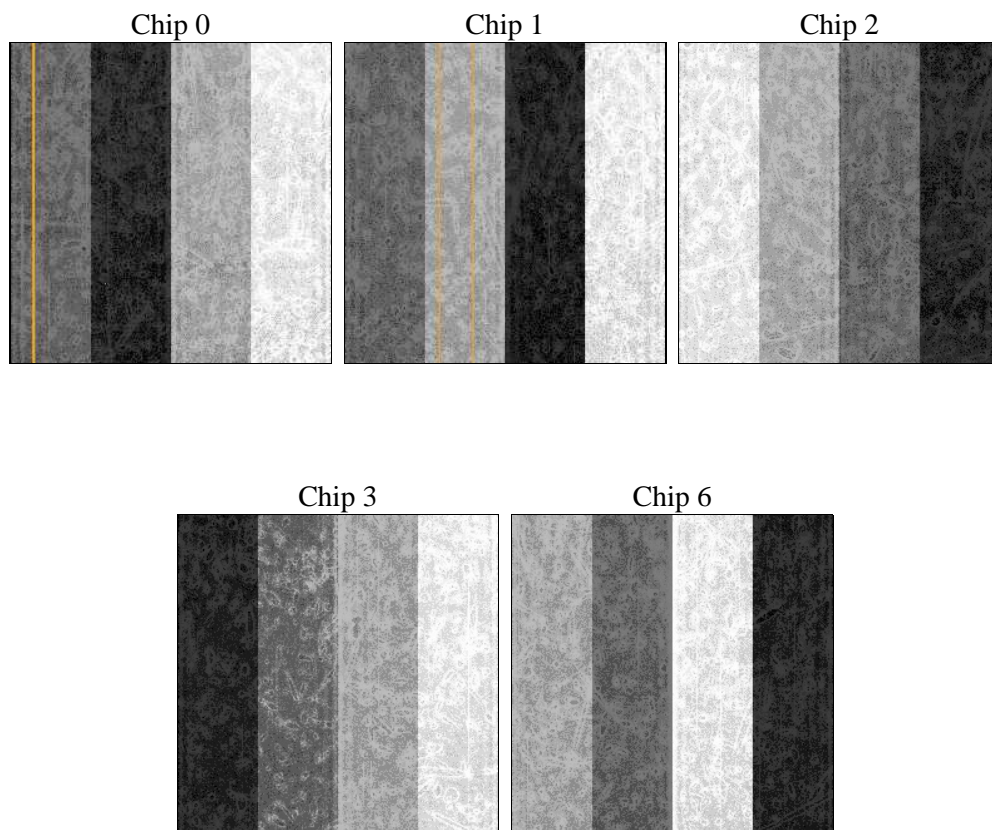
2 OBI

2.1 OBI

2.1.1 Images



2.1.2 Bias



2.1.3 Parameters

obi_num	0	Obi number	sched_exp_time	15125.000000	[s] Scheduled observation exposure time
ascdsver	10.3	Processing system revision	ontime	15205.459126651	Sum of GTIs [s]
caldbver	4.6.4	 	ontime0	15205.459146619	Sum of GTIs [s]
date	2014-11-29T09:19:49	Date and time of file creation	ontime1	15208.600116968	Sum of GTIs [s]
revision	2	Processing version of data	ontime2	15208.600116968	Sum of GTIs [s]
			ontime3	15205.459126651	Sum of GTIs [s]
			ontime6	15208.600116968	Sum of GTIs [s]
			l1events	384348	Number of level 1 events

2.1.4 Events

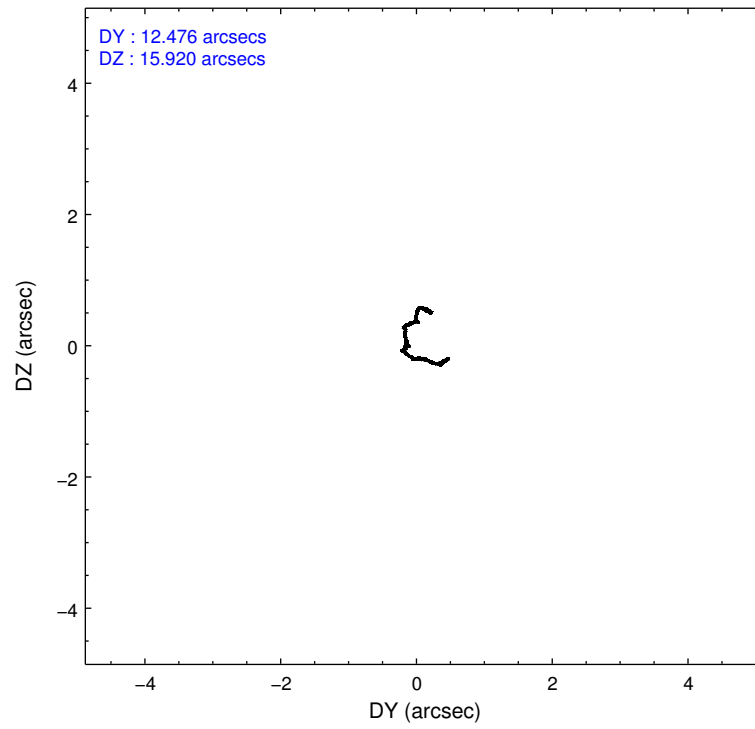
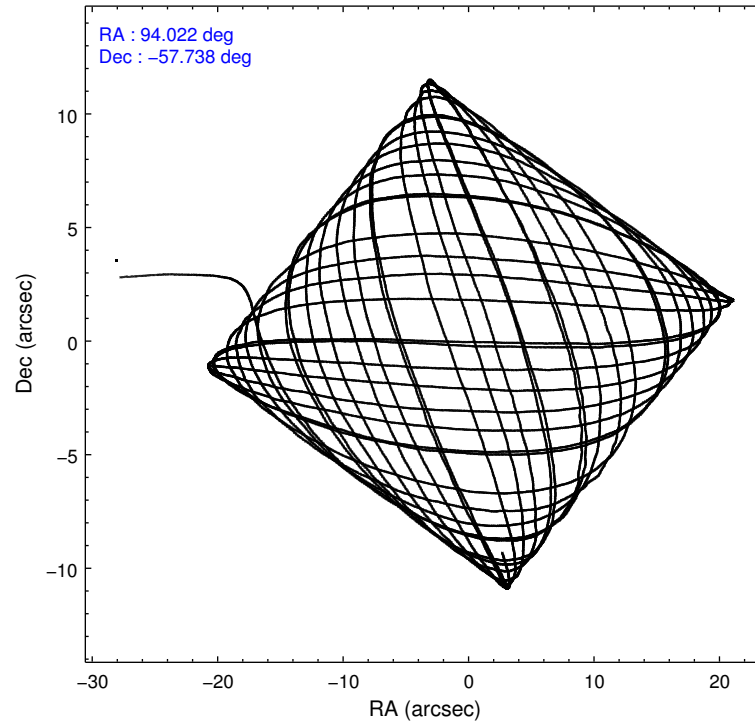
	ccd 0	ccd 1	ccd 2	ccd 3	ccd 6
level 1 events	72245	75130	78547	79476	78950
rejected events	62378	64481	69092	67900	68828
rejected %	86%	85%	87%	85%	87%

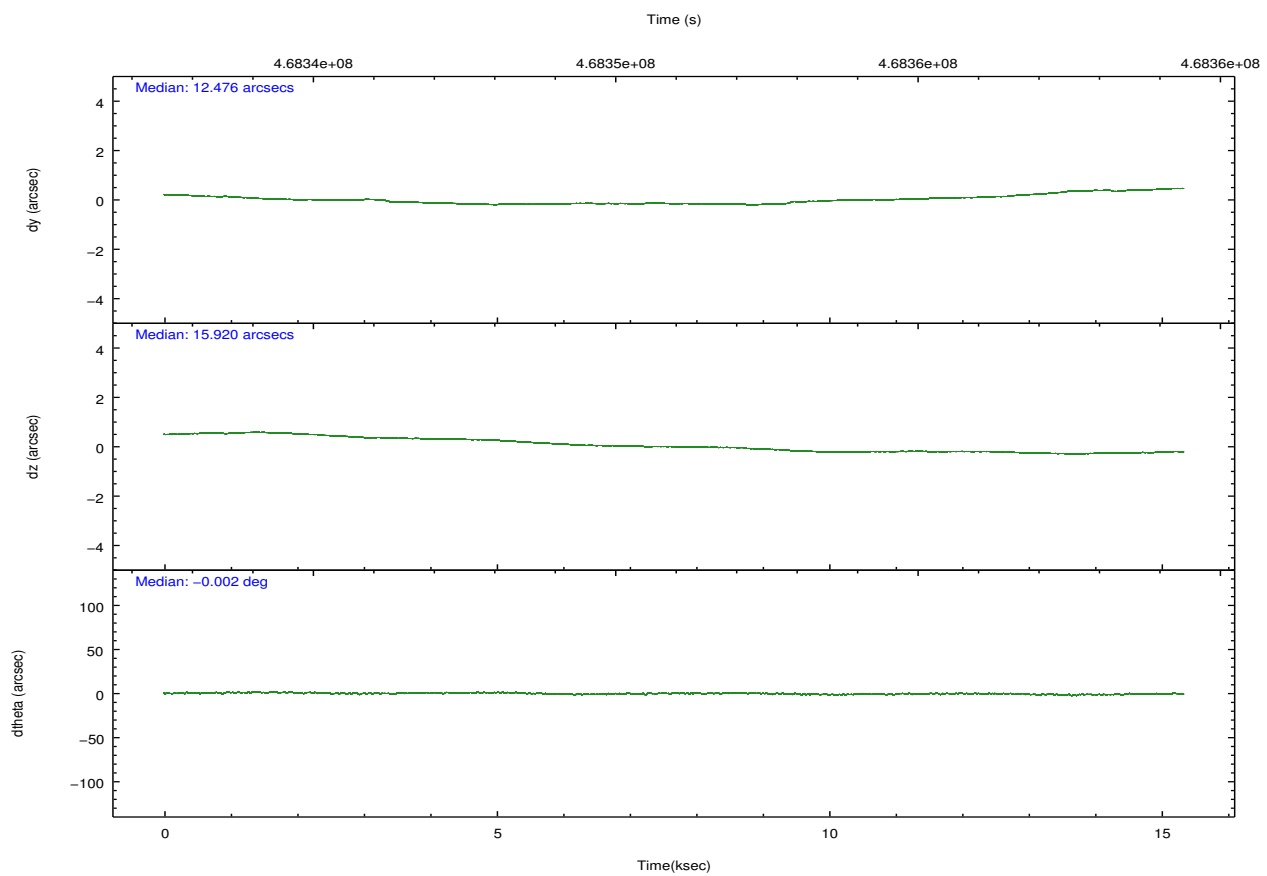
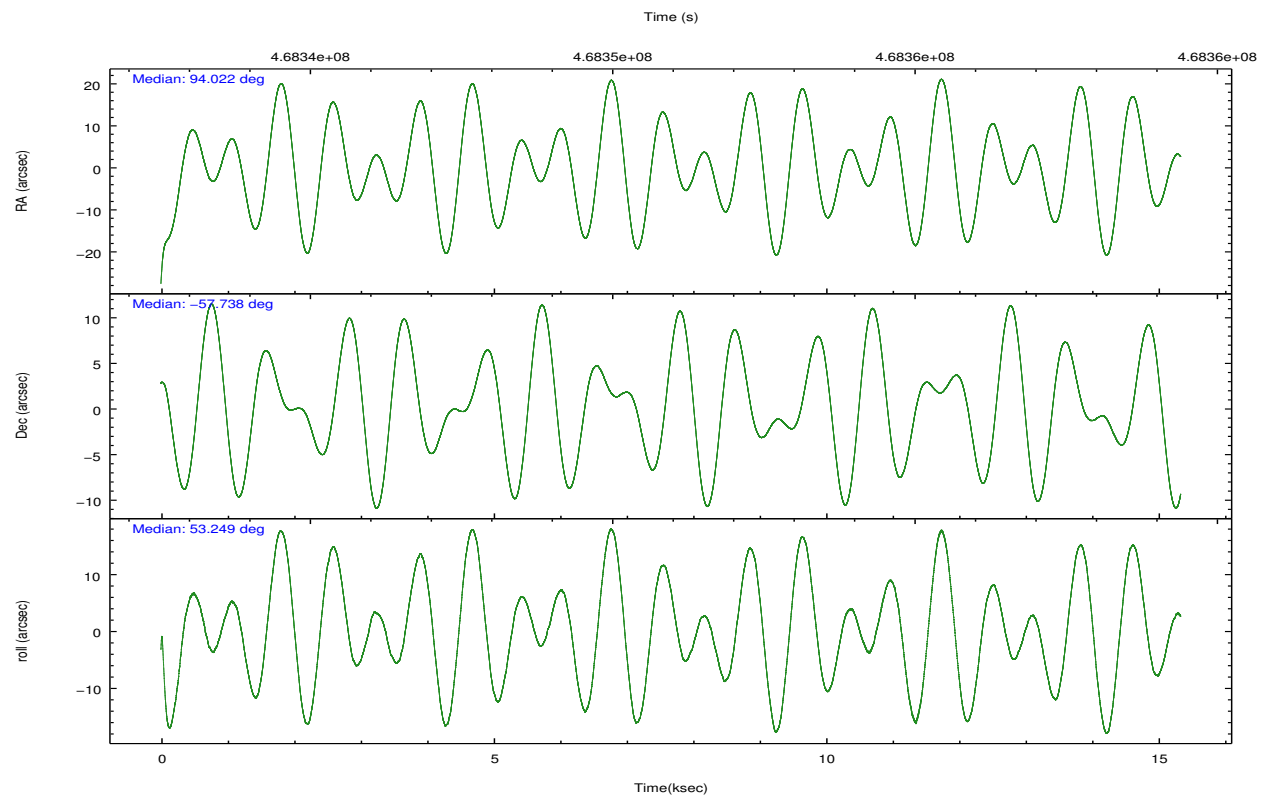
	ccd 0	ccd 1	ccd 2	ccd 3	ccd 6
grade 0 events	3603	3795	3313	5133	3639
	4%	5%	4%	6%	4%
grade 1 events	53	45	36	67	39
	0%	0%	0%	0%	0%
grade 2 events	2312	2462	2306	2352	2215
	3%	3%	2%	2%	2%
grade 3 events	1023	1063	986	1059	1017
	1%	1%	1%	1%	1%
grade 4 events	899	1046	977	1070	1008
	1%	1%	1%	1%	1%
grade 5 events	3723	3936	3628	4231	4153
	5%	5%	4%	5%	5%
grade 6 events	2034	2285	1876	1966	2245
	2%	3%	2%	2%	2%
grade 7 events	58598	60498	65425	63598	64634
	81%	80%	83%	80%	81%

2.2 Compared Parameters

Parameter	Planned	Actual	Parameter	Planned	Actual
Instrument	ACIS	ACIS	Obspar format version number	7	7
Detector	ACIS-01236	ACIS-01236	Obspar file type	PREDICTED	ACTUAL
Grating	NONE	NONE	Obspar update status	NONE	UPDATED
Data mode	VFAINT	VFAINT	CCD I0 on	Y	Y
Observation mode	POINTING	POINTING	CCD I1 on	Y	Y
[deg] Pointing RA	94.015667	94.02146152784272	CCD I2 on	Y	Y
[deg] Pointing Dec	-57.765429	-57.73812310910718	CCD I3 on	Y	Y
[deg] Pointing Roll	53.041443	53.25504775854775	CCD S0 on	N	N
[mm] SIM focus pos	-0.782348	-0.7809083437167272	CCD S1 on	N	N
[mm] SIM defocus	0	0.001439871863259334	CCD S2 on	O1	Y
[mm] SIM translation stage pos	-225.842463	-225.8433433320239	CCD S3 on	N	N
[mm] SIM translation stage offset	-7.75	-7.749109670905796	CCD S4 on	N	N
[s] Observation start time (MET)	468343492.184000	468342524.36991	CCD S5 on	N	N
Observation start date	2012-11-03T15:23:45	2012-11-03T15:08:44	Number of optional ACIS chips dropped	0	0
[s] Observation end time (MET)	468358617.184000	468359463.00832	On-chip summing requested	N	N
Observation end date	2012-11-03T19:35:50	2012-11-03T19:51:03	Subarray requested	NONE	NONE
Read mode	TIMED	TIMED	Alternating exposures requested	N	N
			[s] Primary exposure time	0.000000	3.1

2.3 Aspect



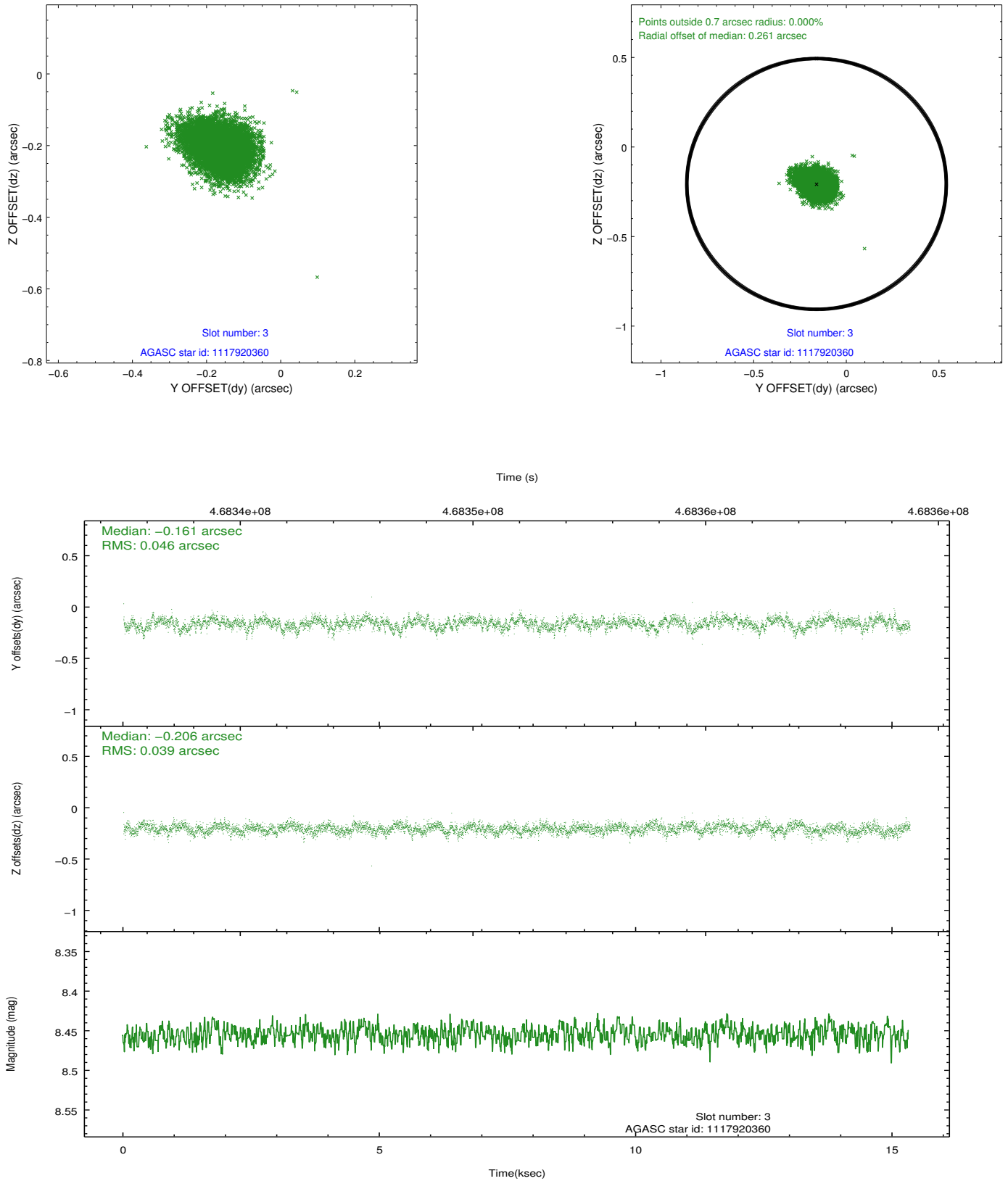


Slot Statistics

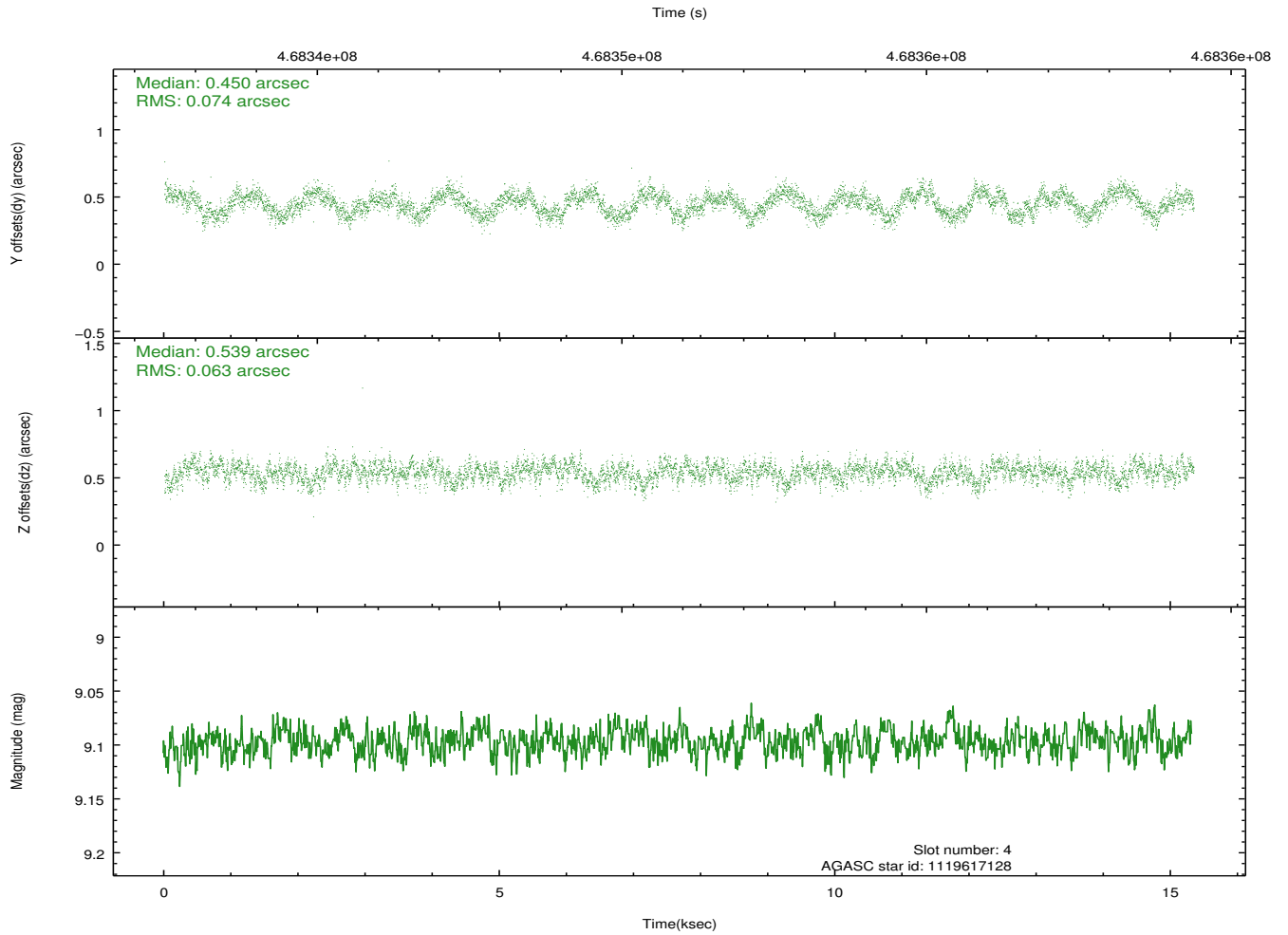
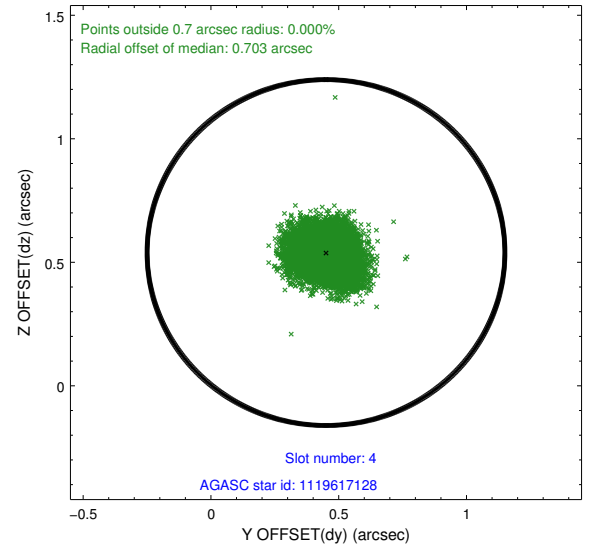
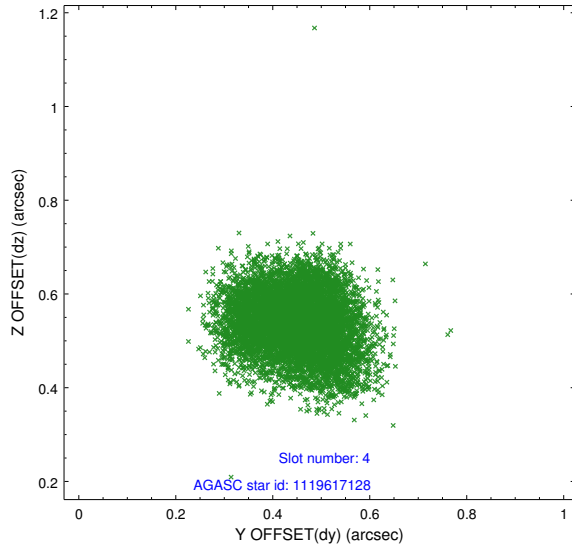
slot	status	used	id	mag	n_pts	med_dy	med_dz	dr1	dr2	ra	dec	mean_y	mean_z
0	FID		ACIS-I-1	7.04	3741	0.143	-0.127	0.010	0.025	0.000000	0.000000	927.03	-998.81
1	FID		ACIS-I-5	7.03	3741	-0.262	0.121	0.012	0.019	0.000000	0.000000	-1821.33	898.71
2	FID		ACIS-I-6	7.05	3741	0.024	0.076	0.013	0.027	0.000000	0.000000	392.13	1543.52
3	GUIDE	used	1117920360	8.45	7478	-0.161	-0.206	0.064	0.105	92.689586	-57.826981	-1725.14	1882.72
4	GUIDE	used	1119617128	9.10	7475	0.450	0.539	0.105	0.163	93.986624	-58.000911	-710.01	-464.56
5	GUIDE	used	1119617976	8.00	7483	-0.213	-0.256	0.071	0.115	94.543198	-57.336411	1847.54	107.46
6	GUIDE	used	1119619792	9.40	7460	0.039	-0.113	0.110	0.178	93.499770	-57.916921	-1031.19	458.04
7	GUIDE	used	1119625992	9.05	7474	-0.112	0.041	0.113	0.193	95.619183	-57.592105	2329.79	-2118.42

2.4 Star Slots

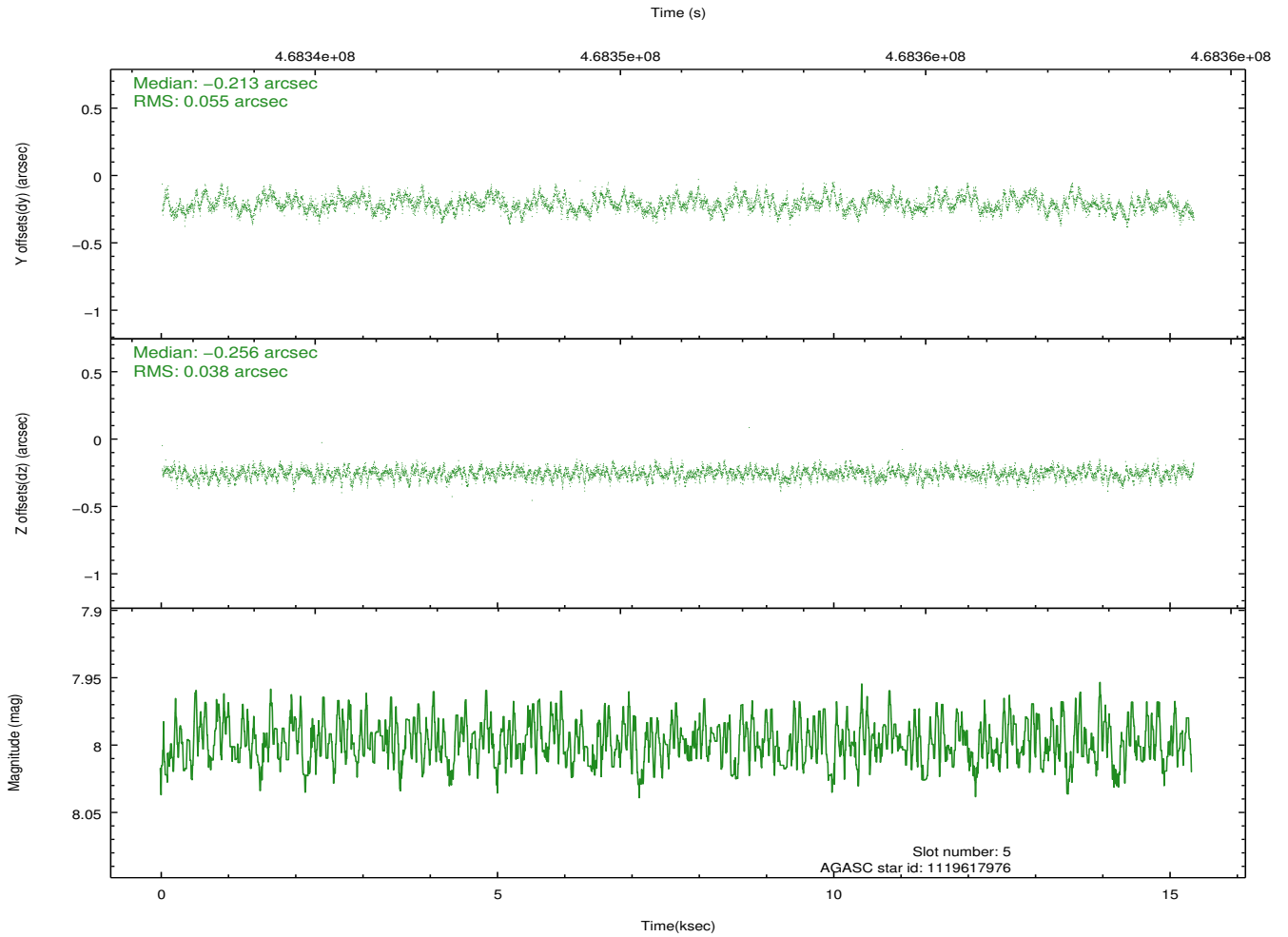
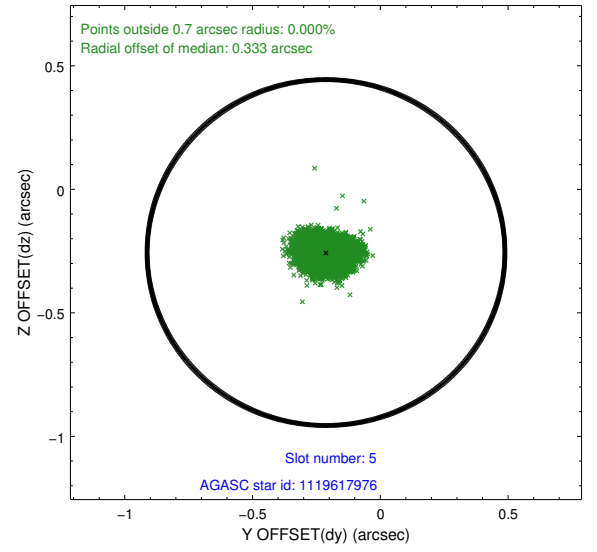
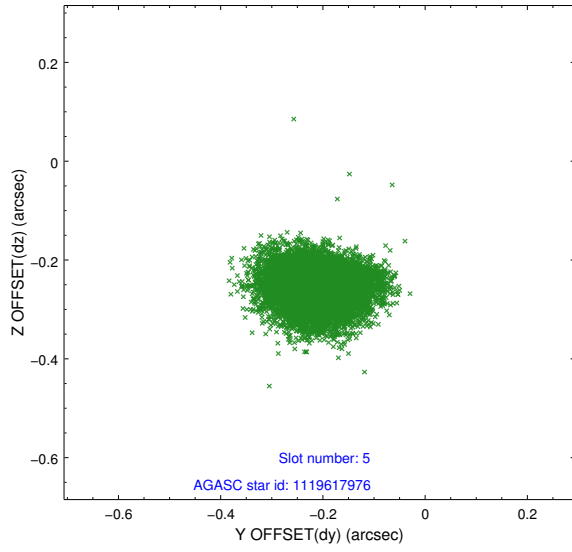
2.4.1 Slot 3



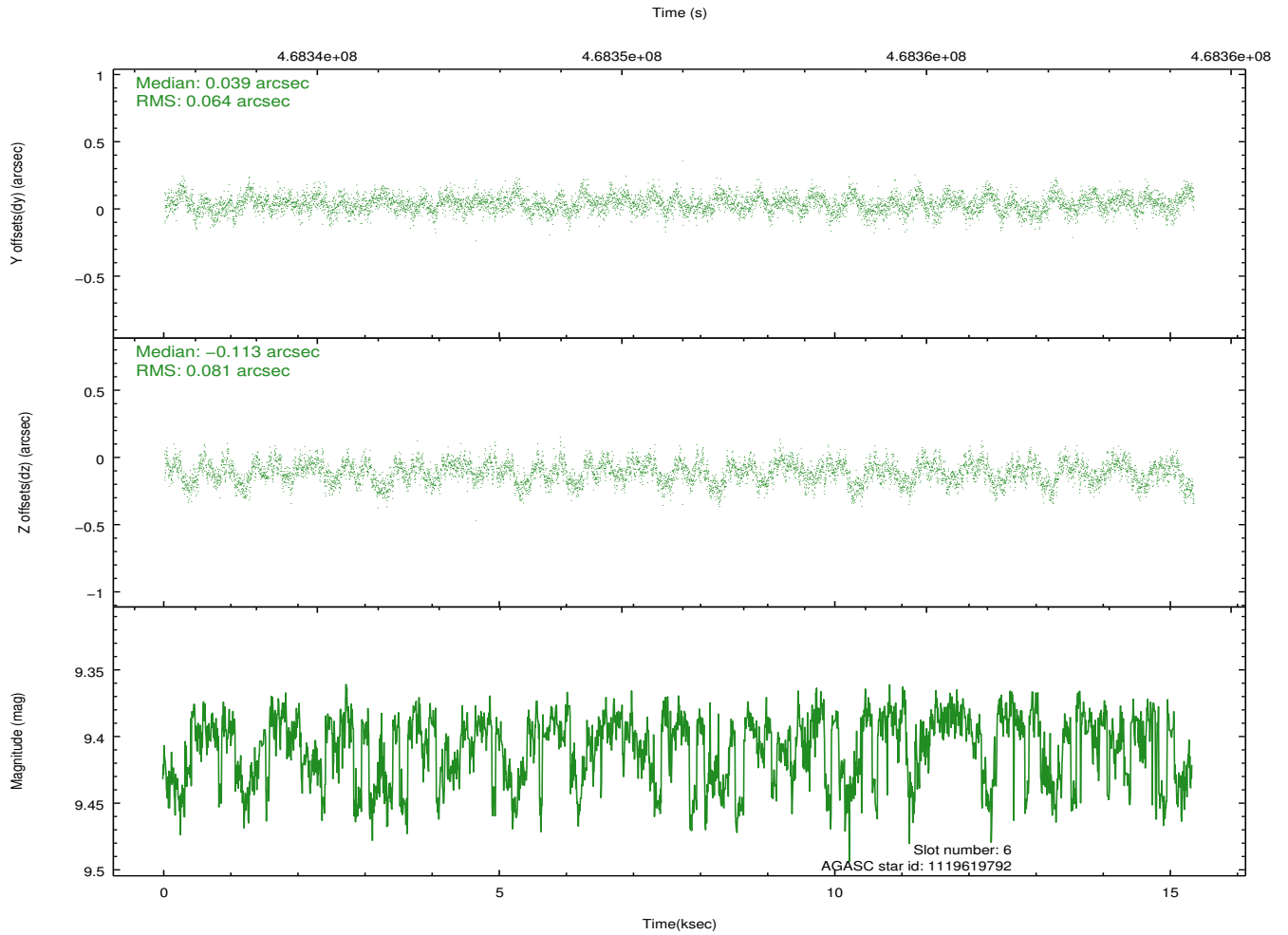
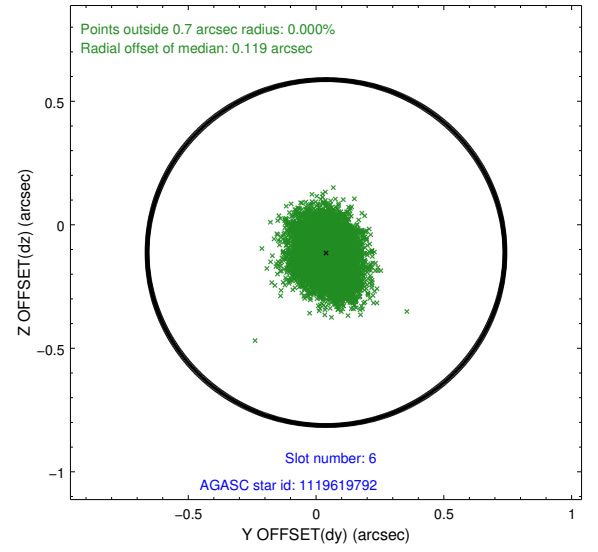
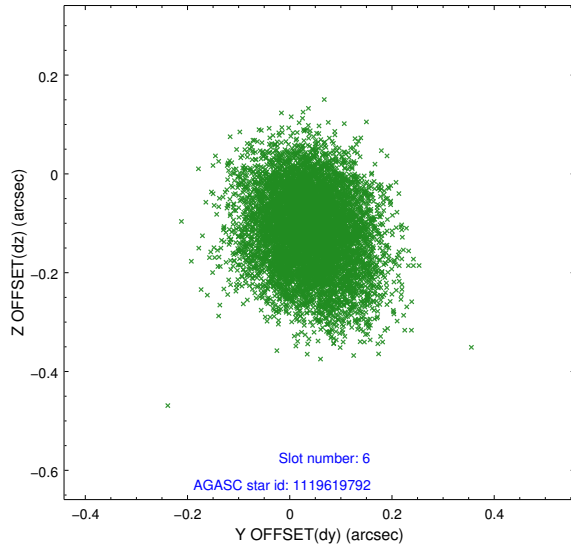
2.4.2 Slot 4



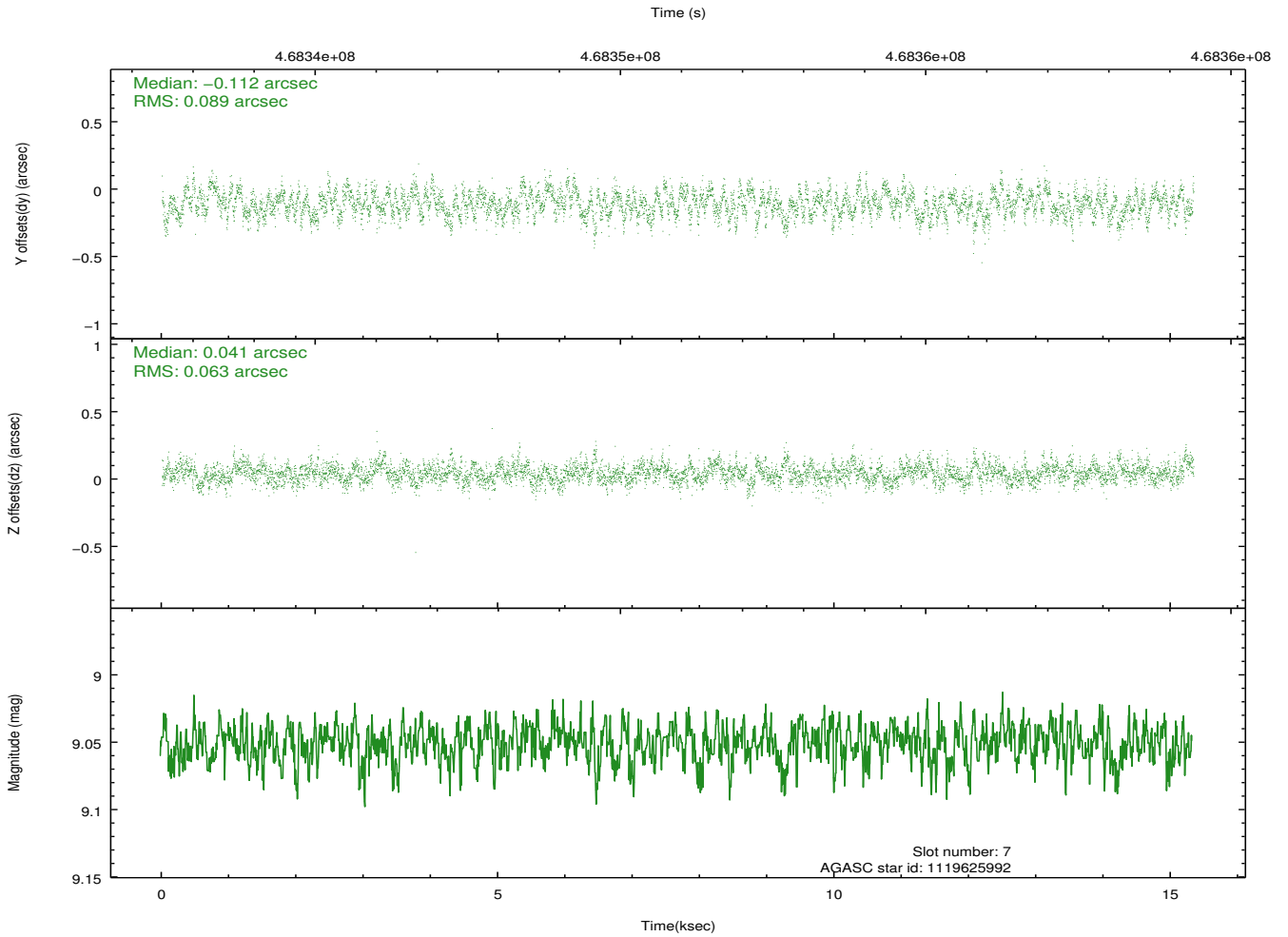
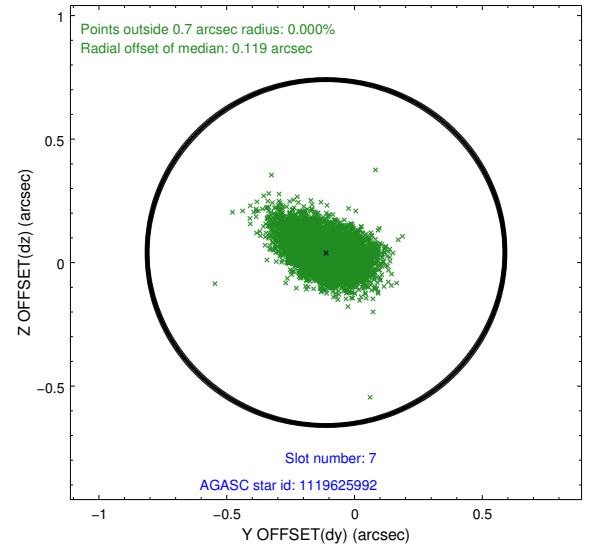
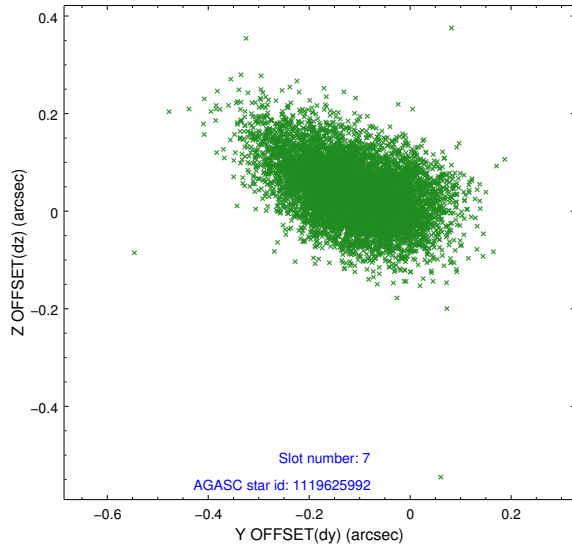
2.4.3 Slot 5



2.4.4 Slot 6

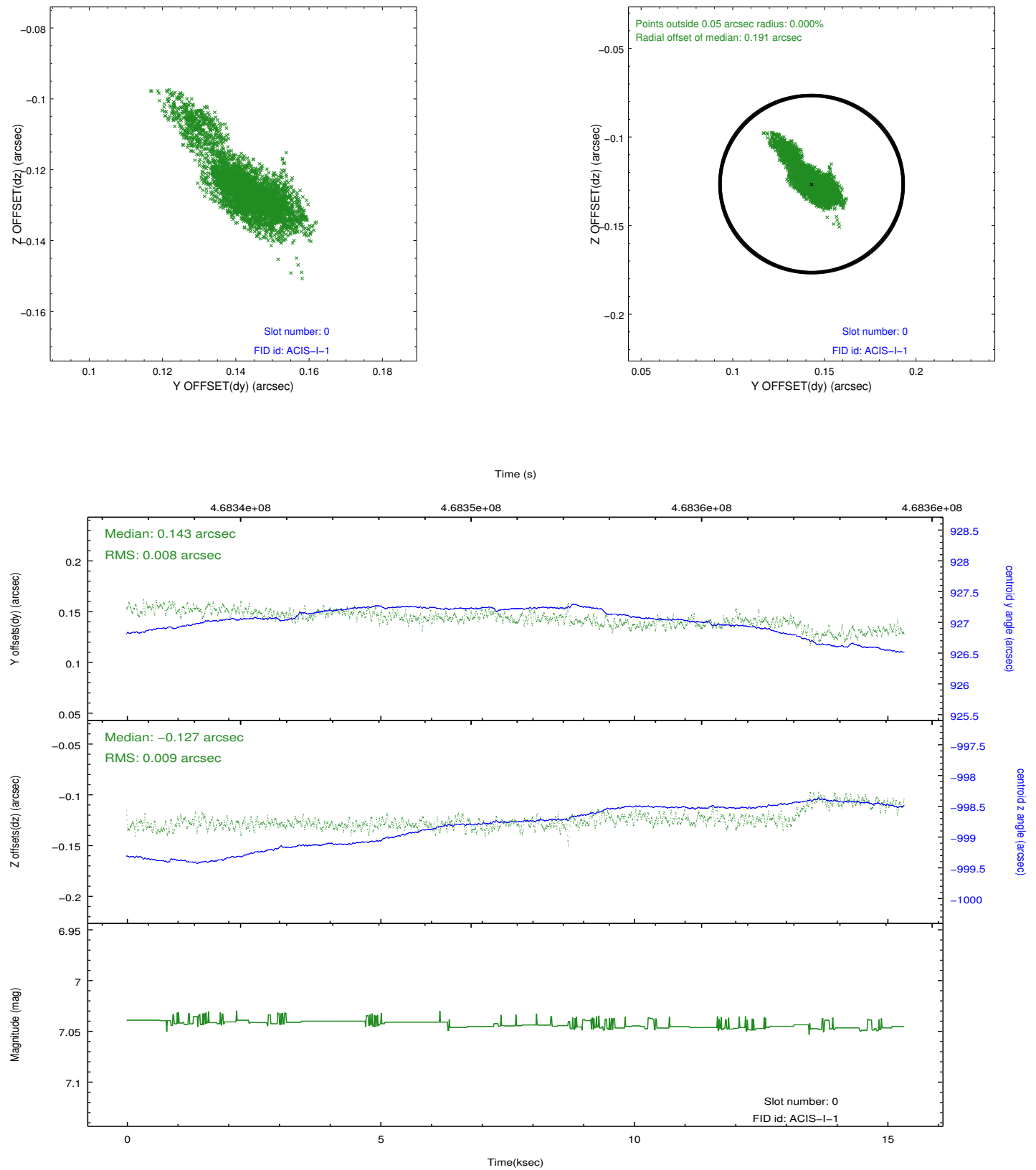


2.4.5 Slot 7

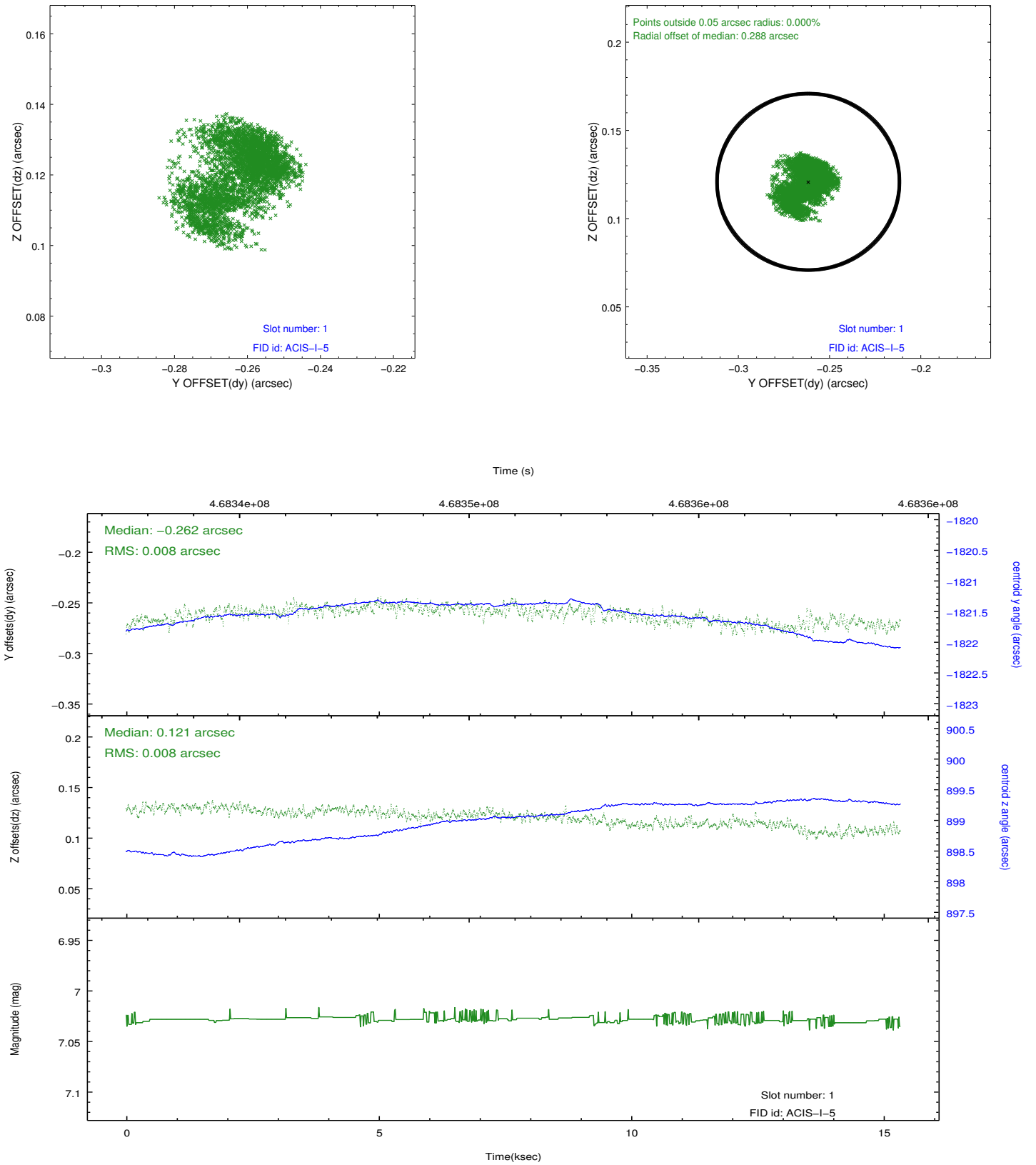


2.5 FID Slots

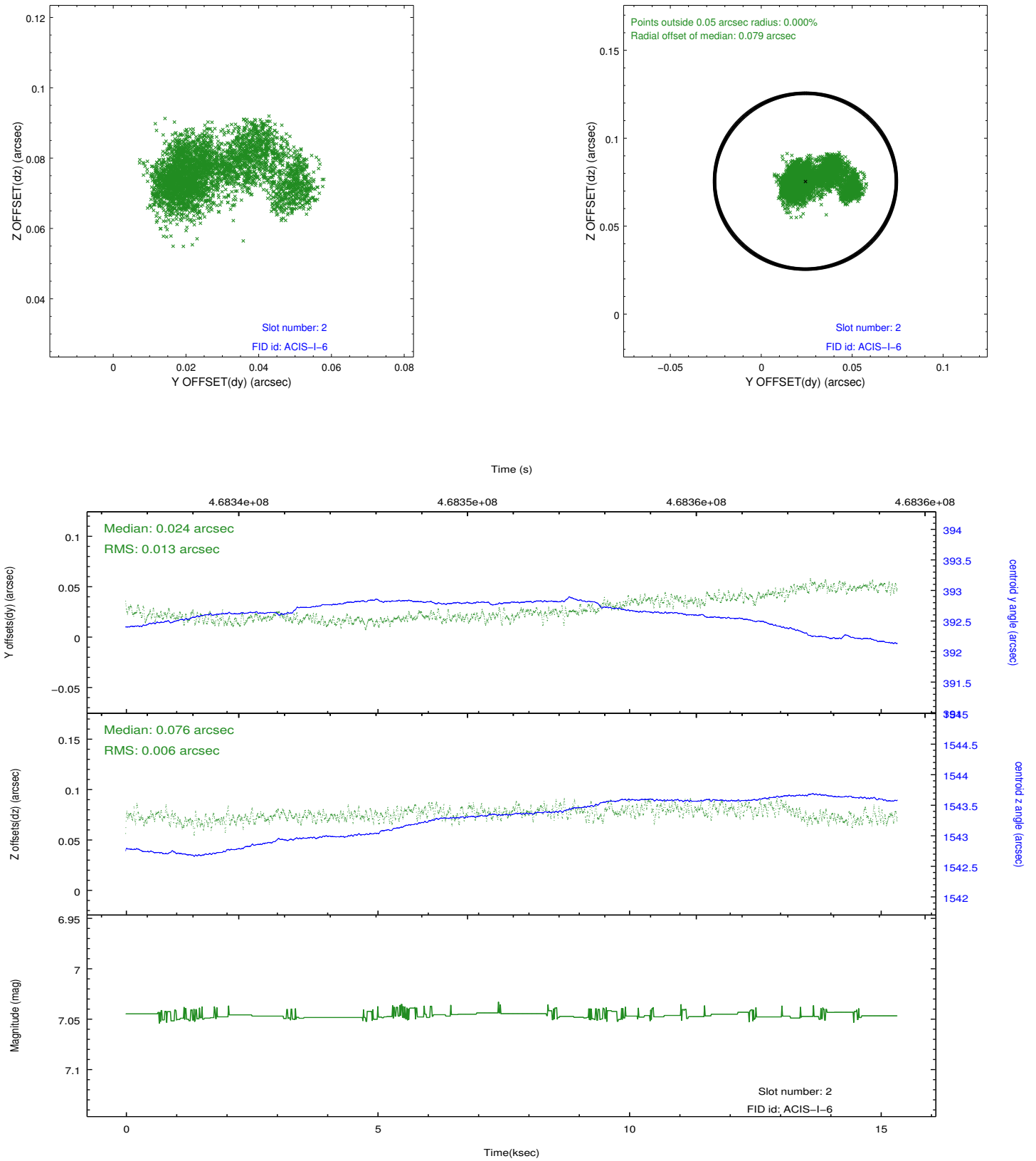
2.5.1 Slot 0



2.5.2 Slot 1



2.5.3 Slot 2



A Summary

A.1 Status

V&V Scientist	Jen Lauer
V&V Date (YYYY-MM-DD)	2014.12.03
V&V Edition	1
V&V Disposition and Status	OK
V&V Charge Time	15.205459126651

A.2 Comments

These data have been reprocessed with new aspect alignment calibration files that correct small mean offsets (up to 0.4 arcsecs) and improve overall astrometric accuracy. The new calibration was determined using data from the time period being reprocessed and was performed using cross-correlation of X-ray sources with radio and optical counterparts.