

# V&V Reference Report

## L2 ASCDS Version : 7.6.11

Observation 1317 - L2 Version 2  
Chandra X-Ray Center

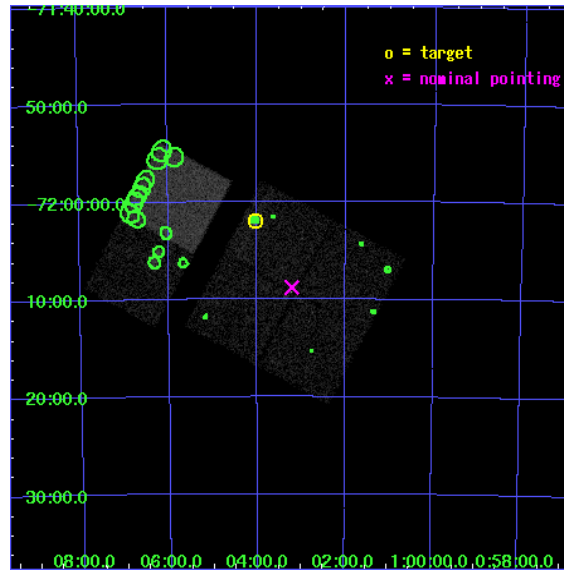
L2 Processing Date : Jul 13 2007

## Contents

<b>1</b>	<b>Front</b>	<b>2</b>
<b>2</b>	<b>OBI</b>	<b>3</b>
2.1	OBI . . . . .	3
2.1.1	Images . . . . .	3
2.1.2	Bias . . . . .	3
2.1.3	Parameters . . . . .	4
2.1.4	Events . . . . .	4
2.2	Compared Parameters . . . . .	5
2.3	Aspect . . . . .	6
2.4	Star Slots . . . . .	9
2.4.1	Slot 3 . . . . .	9
2.4.2	Slot 4 . . . . .	10
2.4.3	Slot 5 . . . . .	11
2.4.4	Slot 6 . . . . .	12
2.4.5	Slot 7 . . . . .	13
2.5	FID Slots . . . . .	14
2.5.1	Slot 0 . . . . .	14
2.5.2	Slot 1 . . . . .	15
2.5.3	Slot 2 . . . . .	16
<b>3</b>	<b>Point Sources</b>	<b>17</b>
<b>A</b>	<b>Summary</b>	<b>18</b>
A.1	Status . . . . .	18
A.2	Comments . . . . .	18

# 1 Front

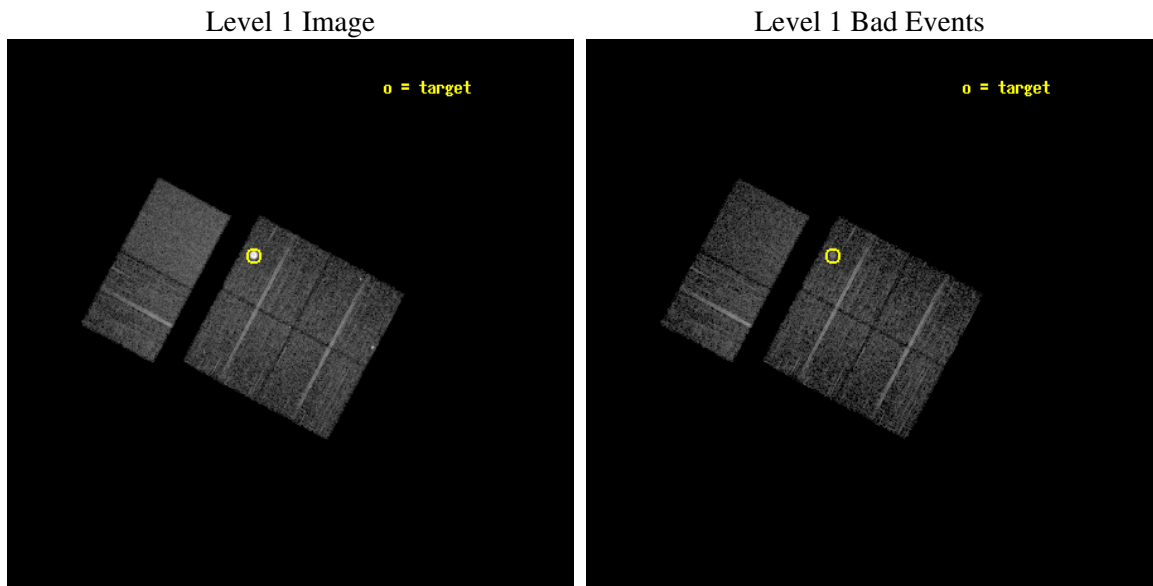
seq_num	590131
obs_id	1317
title	ACIS CALIBRATION OBSERVATION OF THE SUPERNOVA REMNANT E0102-72 (DEC 2000)
observer	Dr. CXC Calibration
object	E0102-72.3 [Chip I3, T=120, Offsets=-4,6,0]
dtcycle	0
cycle	P
ra_targ	16.01
dec_targ	-72.032028
ra_nom	15.802480414872
dec_nom	-72.146670864343
roll_nom	298.1523186151
revision	2
ontime	6956.800006479
livetime	6868.7088159149
ontime0	6956.800006479
ontime1	6956.800006479
ontime2	6956.800006479
ontime3	6956.800006479
ontime6	6956.800006479
ontime7	6956.800006479
l2events	65019



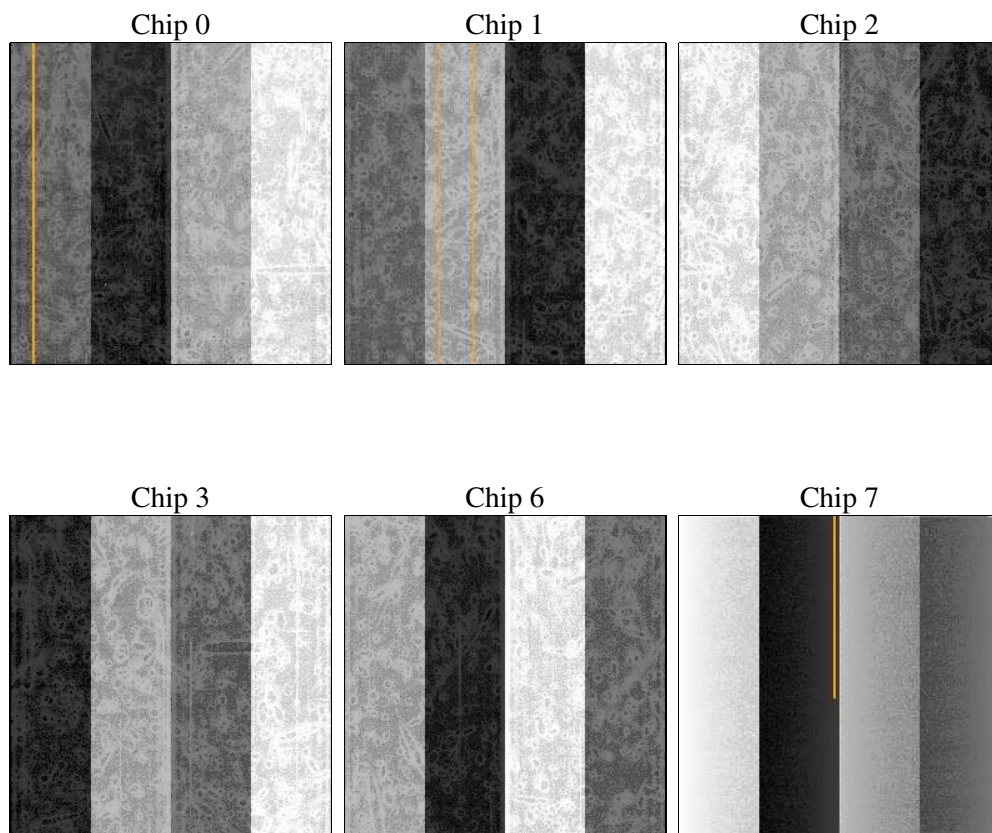
## 2 OBI

### 2.1 OBI

#### 2.1.1 Images



#### 2.1.2 Bias



### 2.1.3 Parameters

obi_num	0
ascdsver	7.6.11
caldsver	3.4.0
date	2007-07-13T16:57:26
revision	2

sched_exp_time	7200.000000
ontime	6956.800006479
ontime0	6956.800006479
ontime1	6956.800006479
ontime2	6956.800006479
ontime3	6956.800006479
ontime6	6956.800006479
ontime7	6956.800006479
l1events	277768

### 2.1.4 Events

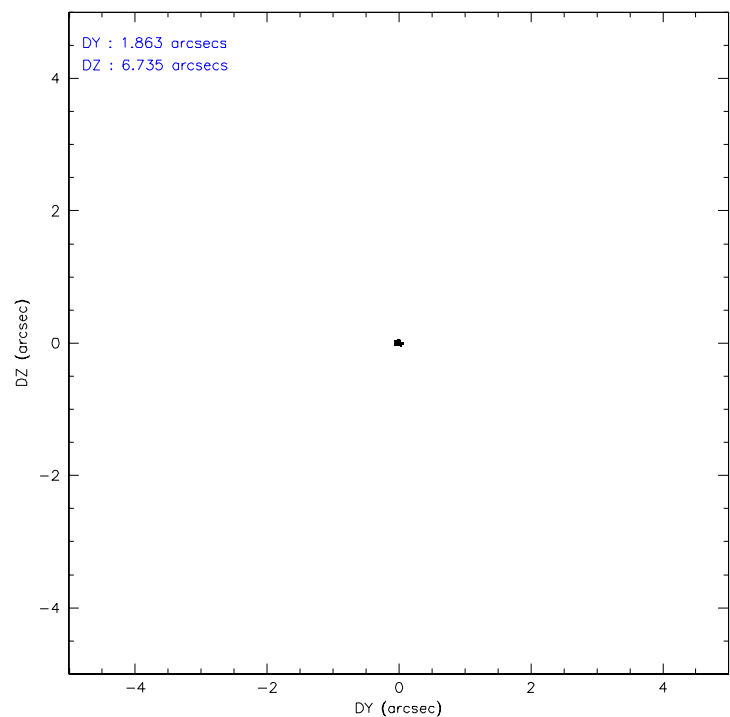
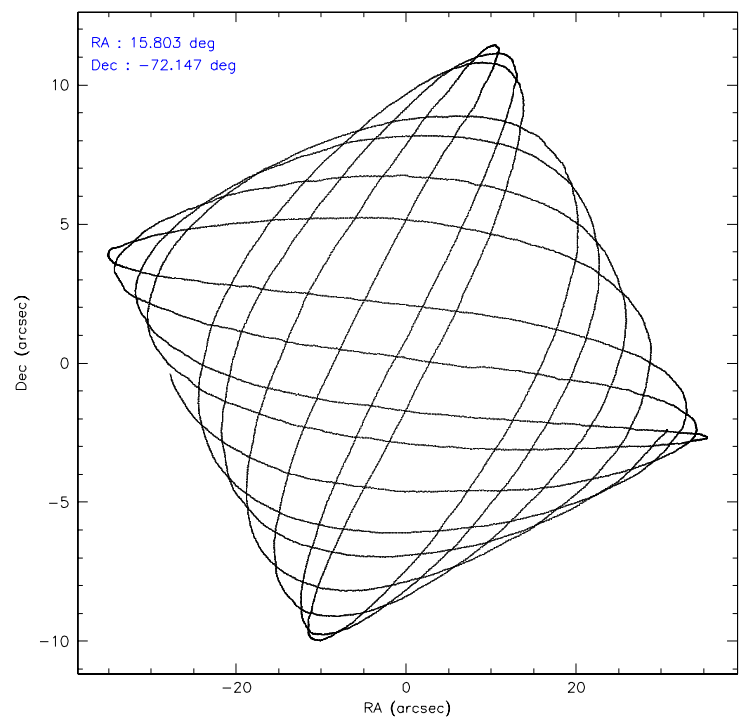
	ccd 0	ccd 1	ccd 2	ccd 3	ccd 6	ccd 7
level 1 events	37672	38941	41149	63321	43331	53354
rejected events	32536	33064	35804	36547	38247	31332
rejected %	86%	84%	87%	57%	88%	58%

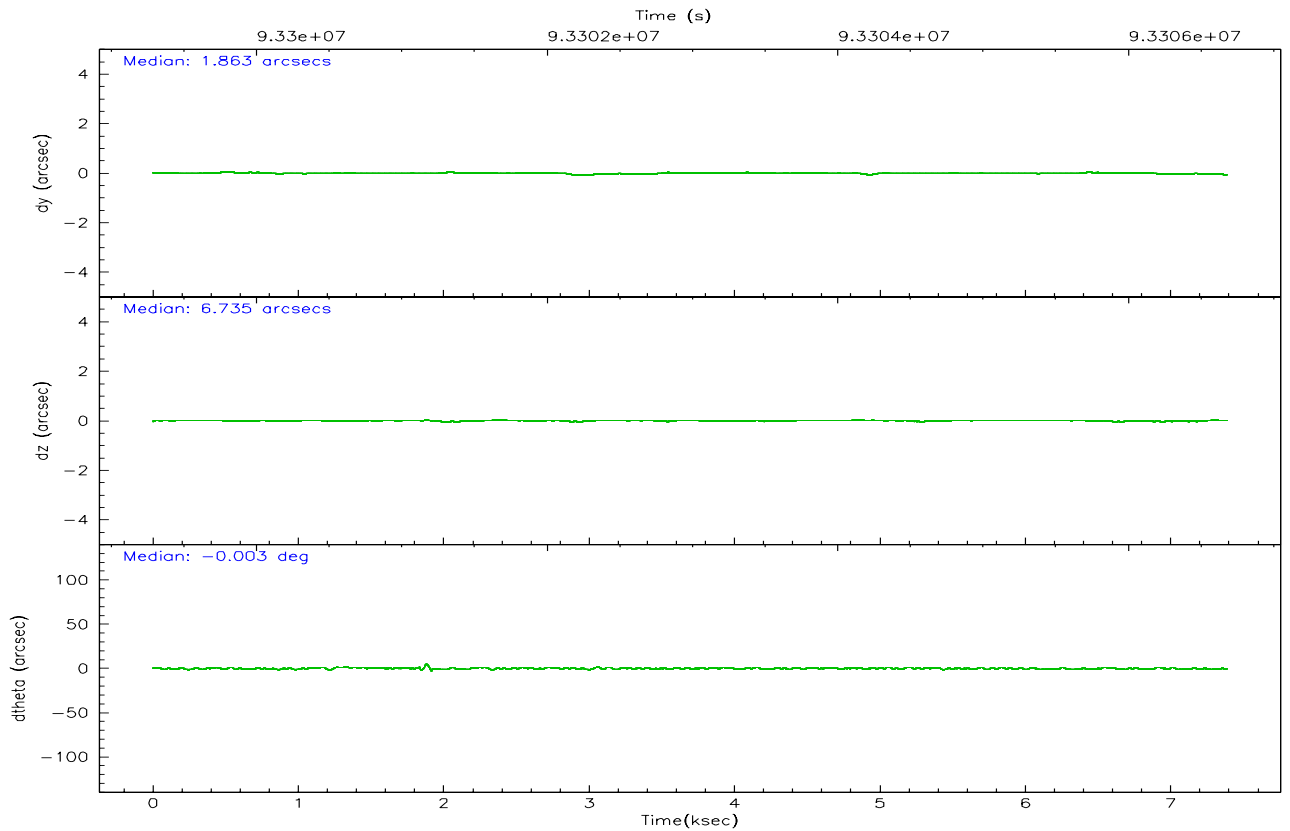
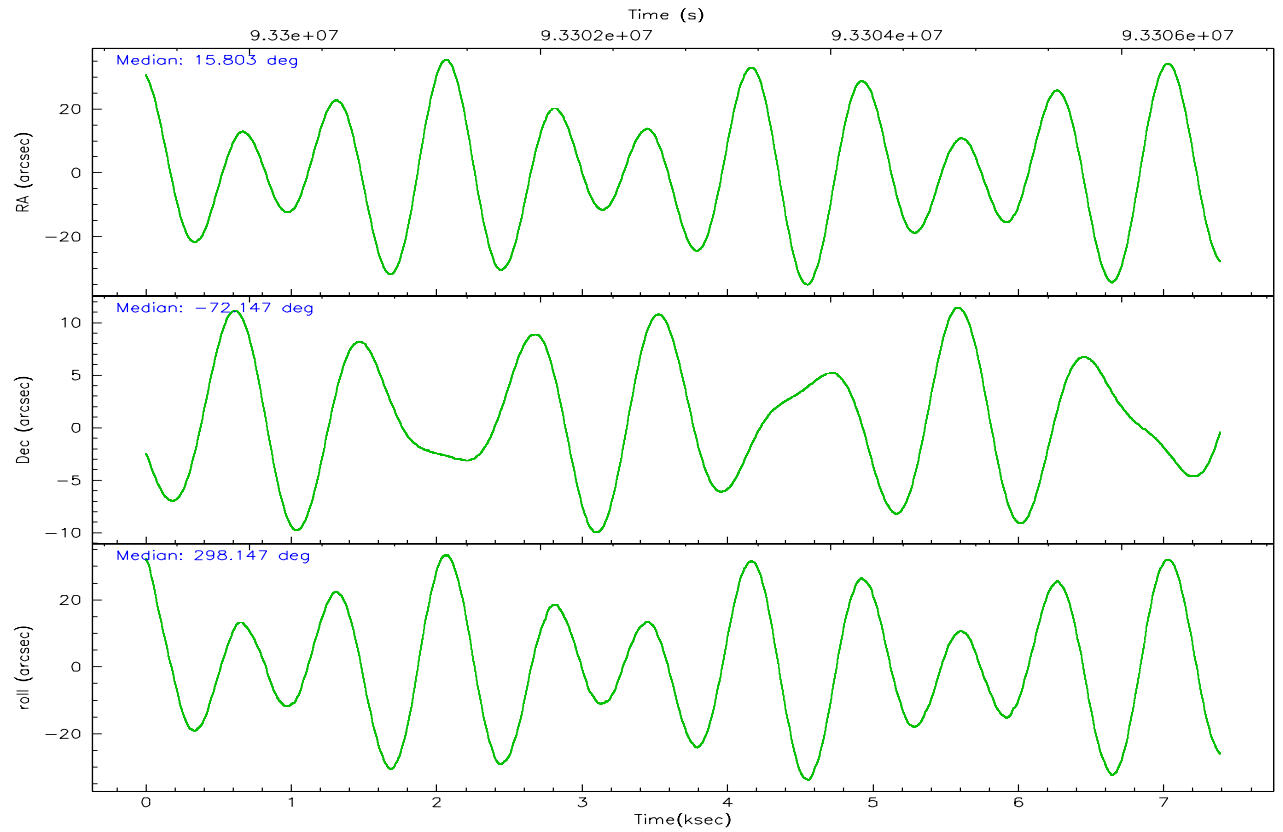
	ccd 0	ccd 1	ccd 2	ccd 3	ccd 6	ccd 7
grade 0 events	2365	2684	2635	21633	2290	2293
	6%	6%	6%	34%	5%	4%
grade 1 events	17	22	29	165	21	45
	0%	0%	0%	0%	0%	0%
grade 2 events	1004	1107	1001	2477	945	4267
	2%	2%	2%	3%	2%	7%
grade 3 events	503	554	471	861	498	2054
	1%	1%	1%	1%	1%	3%
grade 4 events	453	564	437	811	430	2021
	1%	1%	1%	1%	0%	3%
grade 5 events	1514	1630	1377	1570	1787	5053
	4%	4%	3%	2%	4%	9%
grade 6 events	819	978	804	1014	926	11408
	2%	2%	1%	1%	2%	21%
grade 7 events	30997	31402	34395	34790	36434	26213
	82%	80%	83%	54%	84%	49%

## 2.2 Compared Parameters

Parameter	Planned	Actual	Parameter	Planned	Actual
Instrument	ACIS	ACIS	Obspar format version number	6	6
Detector	ACIS-012367	ACIS-012367	Obspar file type	PREDICTED	ACTUAL
Grating	NONE	NONE	Obspar update status	NONE	UPDATED
Data mode	FAINT	FAINT	Number of optional ACIS chips dropped	0	0
Observation mode	POINTING	POINTING	On-chip summing requested	N	N
Pointing RA	15.726393	15.80248041487188	Subarray requested	NONE	NONE
Pointing Dec	-72.132044	-72.14667086434274	Alternating exposures requested	N	N
Pointing Roll	297.871219	298.1523186150987	Primary exposure time	0.000000	3.2
Window start time	92016064.184000	92016064.184000			
Window stop time	94608064.184000	94608064.184000			
SIM focus pos (mm)	-0.782348	-0.7809083437167272			
SIM defocus (mm)	0	0.001439871863259334			
SIM translation stage pos (mm)	-233.592463	-233.5874344608287			
SIM translation stage offset (mm)	0	-0.005018542100998502			
Observation start time	93299477.184000	93299101.99787401			
Observation start date	2000-12-15T20:30:13	2000-12-15T20:25:01			
Observation end time	93306677.184000	93306811.535669			
Observation end date	2000-12-15T22:30:13	2000-12-15T22:33:31			
Read mode	TIMED	TIMED			

## 2.3 Aspect





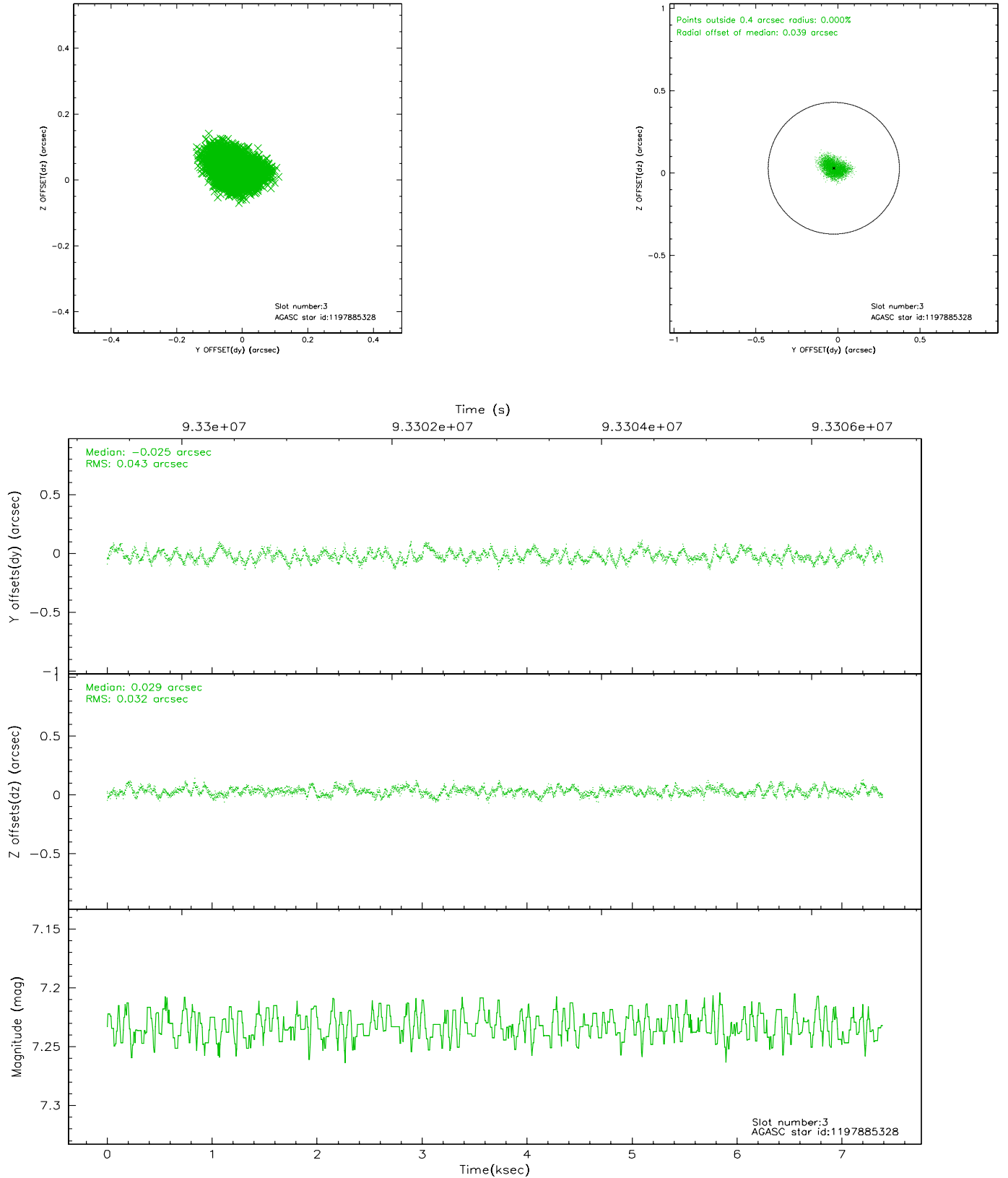
### Slot Statistics

slot	status	id	mag	n_pts	med_dy	med_dz	dr1	dr2	ra	dec	mean_y	mean_z
0	FID	ACIS-I-2	7.15	1802	-0.027	-0.051	0.008	0.015	0.000000	0.000000	-756.23	-836.54
1	FID	ACIS-I-4	7.18	1801	-0.072	0.038	0.006	0.010	0.000000	0.000000	2157.42	1069.35
2	FID	ACIS-I-5	7.23	1801	-0.001	0.082	0.008	0.014	0.000000	0.000000	-1809.05	1068.10
3	GUIDE	1197885328	7.23	3605	-0.025	0.029	0.058	0.091	16.283090	-71.733943	-971.51	1223.84
4	GUIDE	1198189696	7.37	3605	-0.043	0.067	0.051	0.079	15.223750	-72.697522	1549.20	-1428.04
5	GUIDE	1197750936	7.56	3604	-0.045	-0.013	0.045	0.075	15.387940	-71.549550	-2033.34	638.19
6	GUIDE	1197884536	8.50	3603	0.004	0.029	0.065	0.107	17.160729	-71.835289	-176.40	1913.44
7	GUIDE	1197884712	8.29	3603	0.107	-0.111	0.048	0.077	16.087398	-72.252690	569.59	146.96

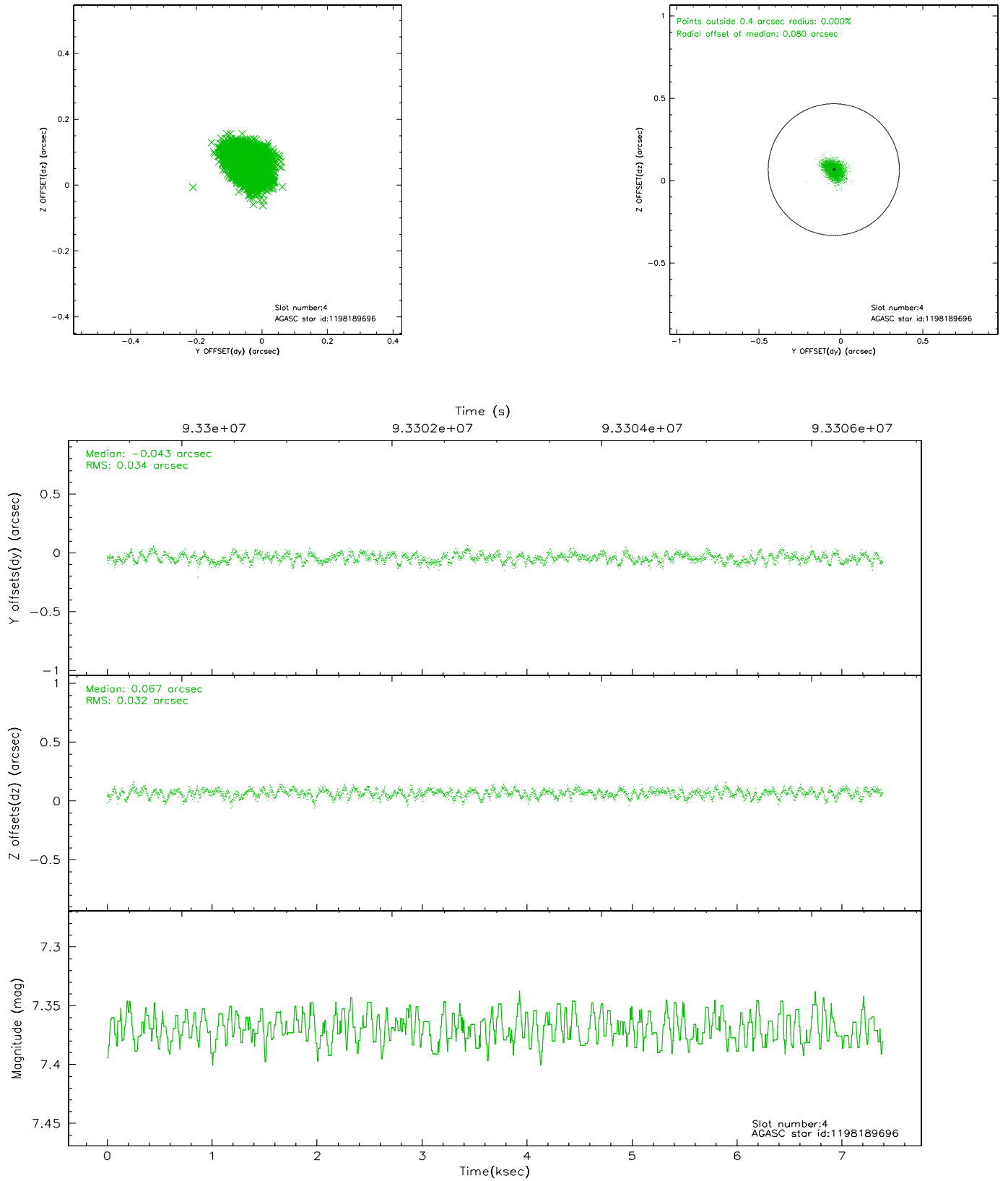


## 2.4 Star Slots

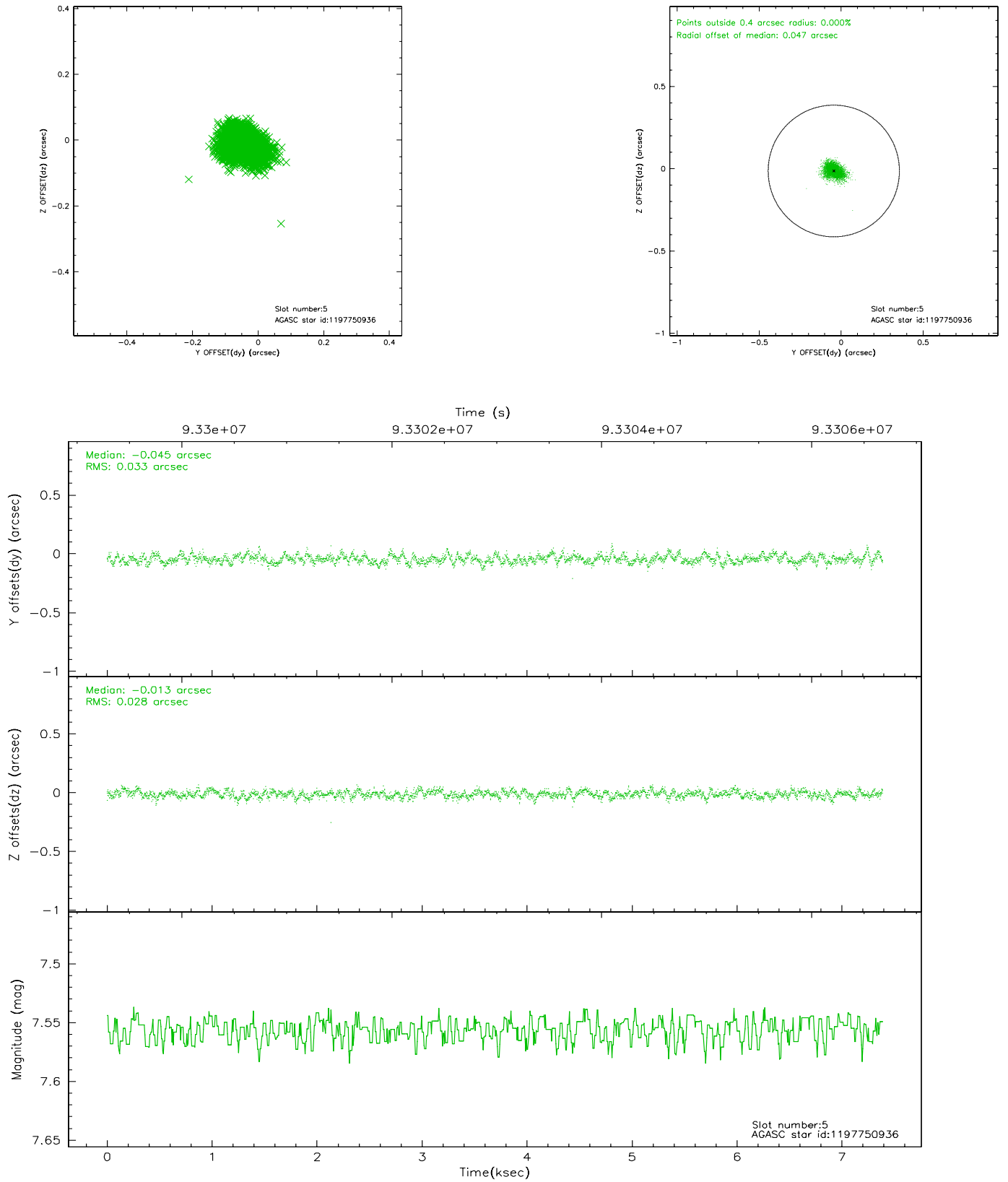
### 2.4.1 Slot 3



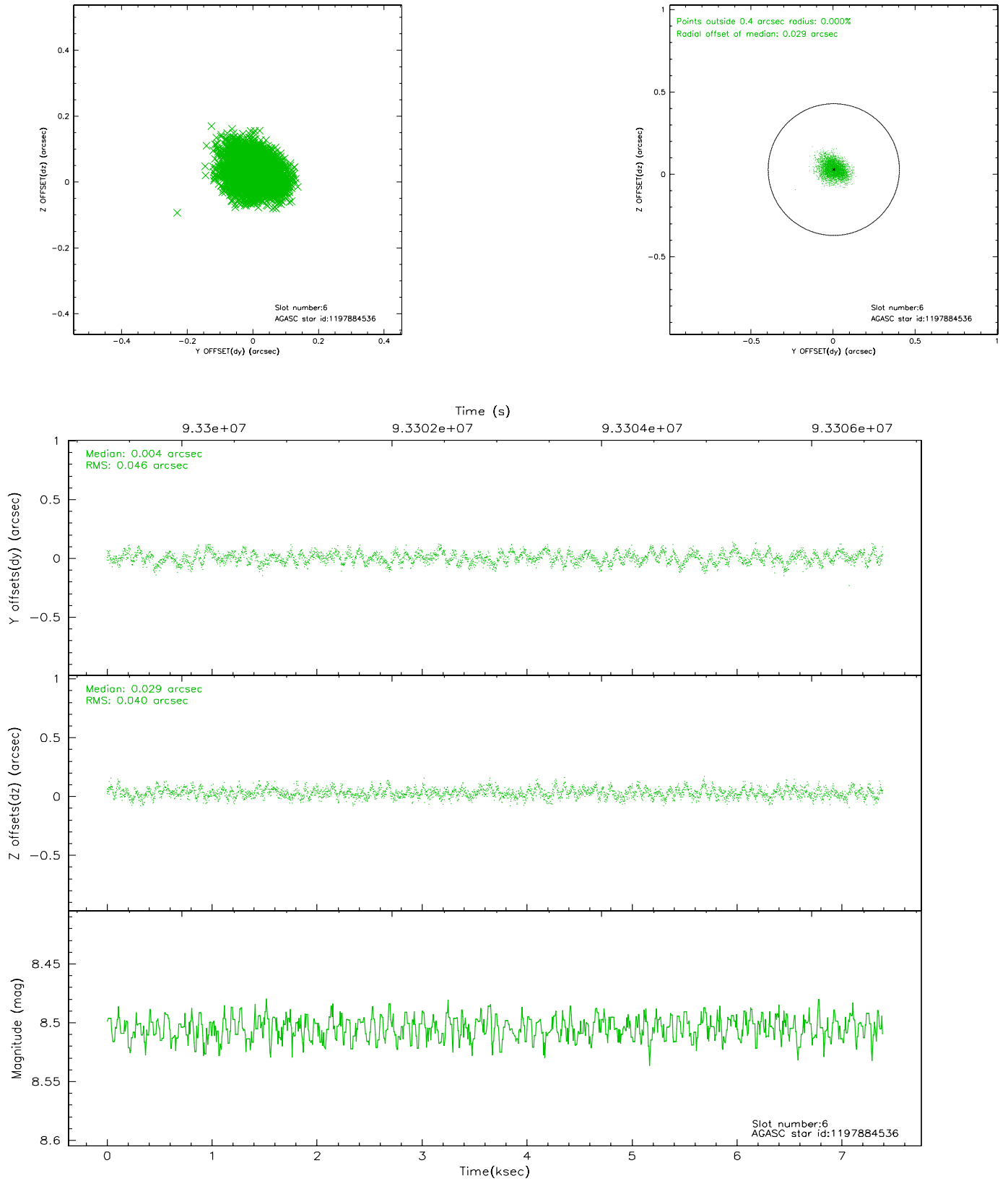
## 2.4.2 Slot 4



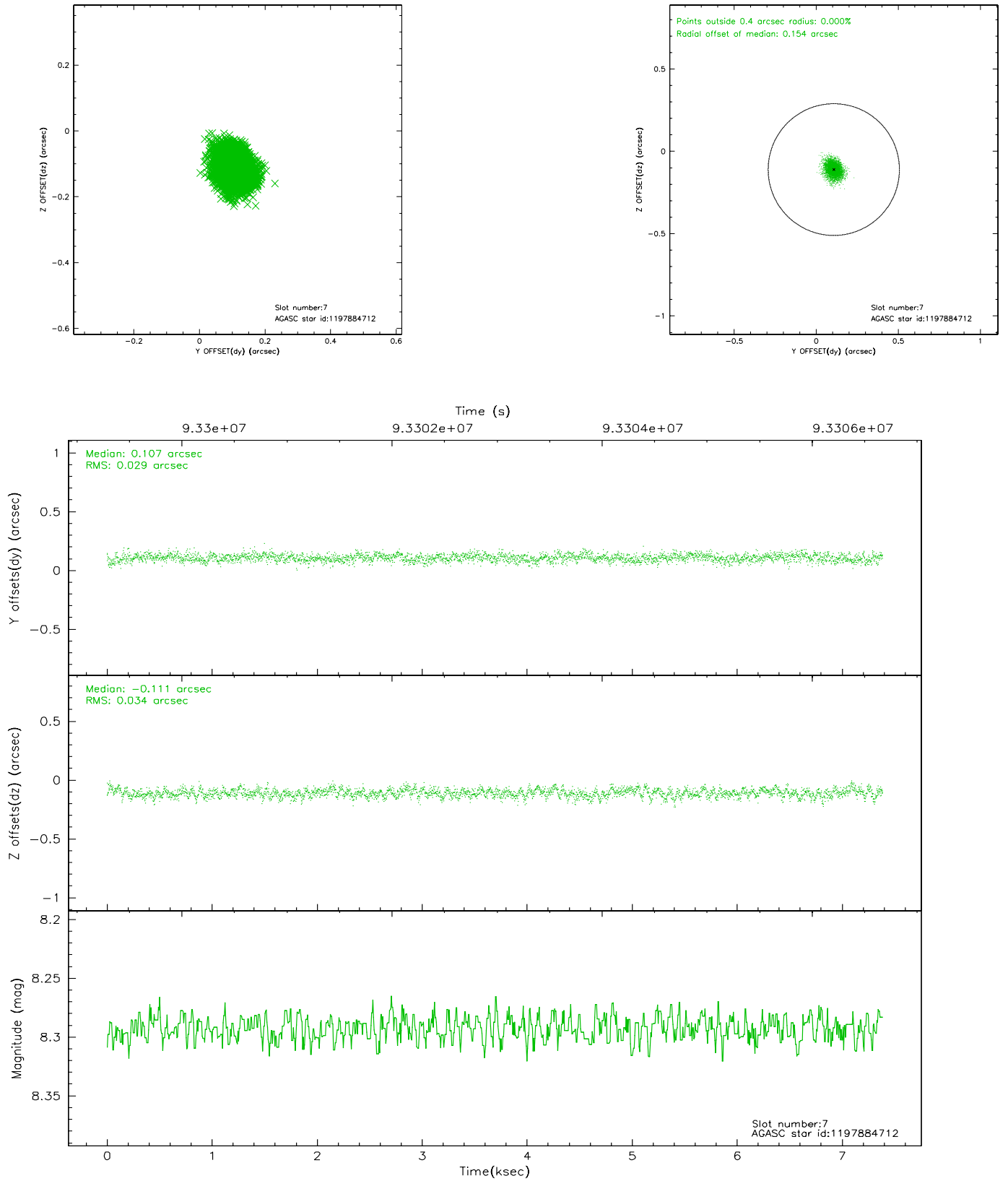
### 2.4.3 Slot 5



## 2.4.4 Slot 6

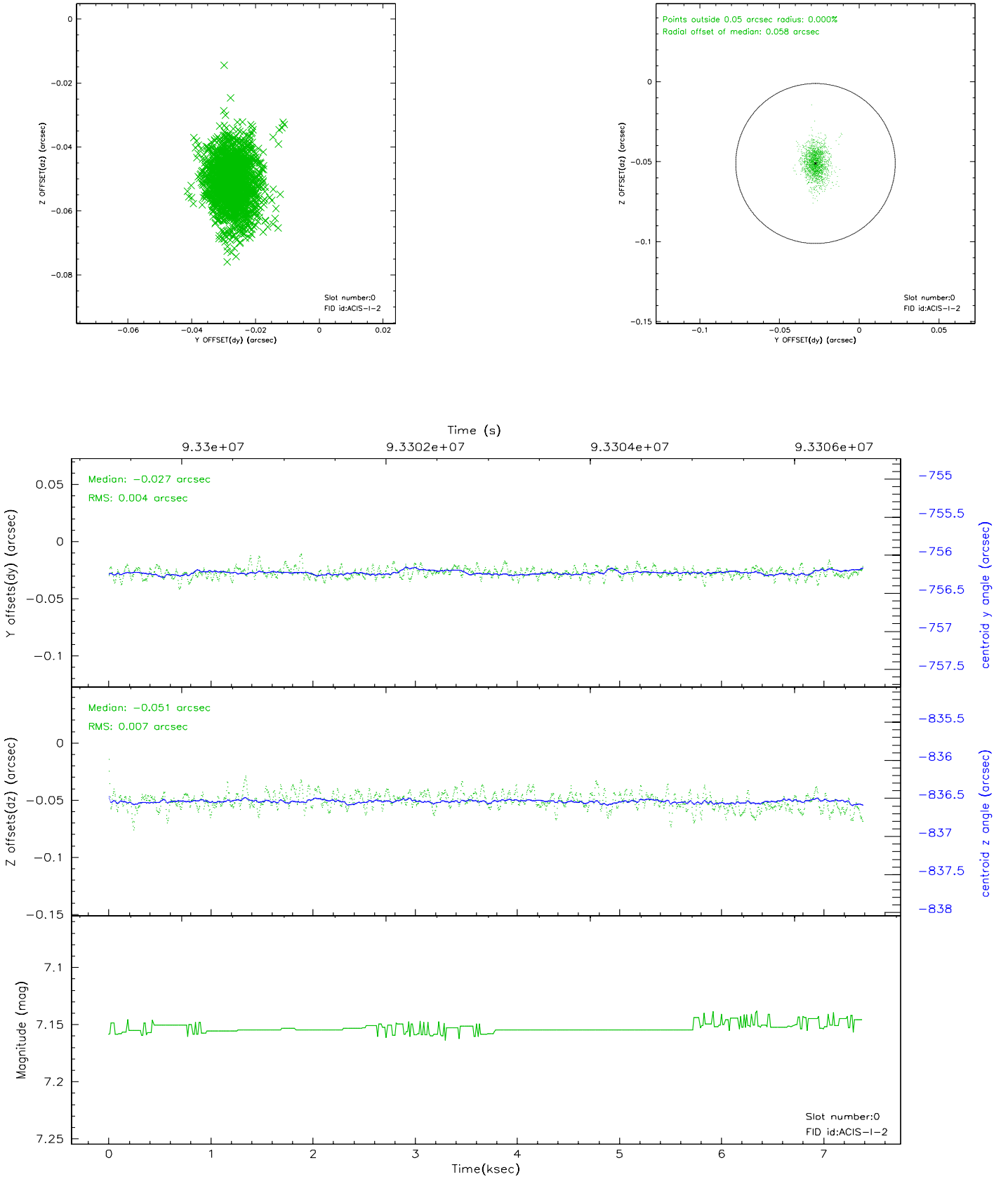


## 2.4.5 Slot 7

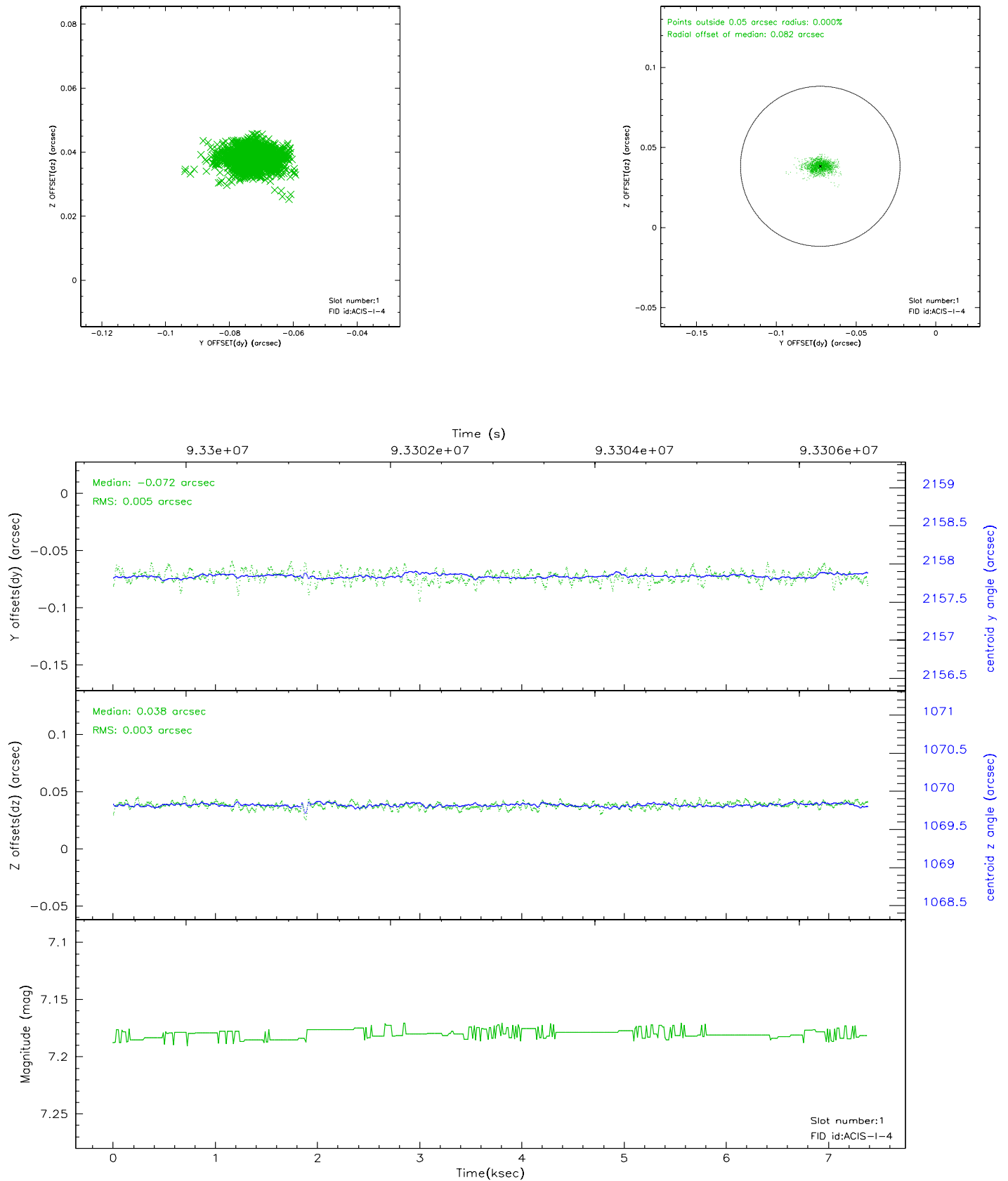


## 2.5 FID Slots

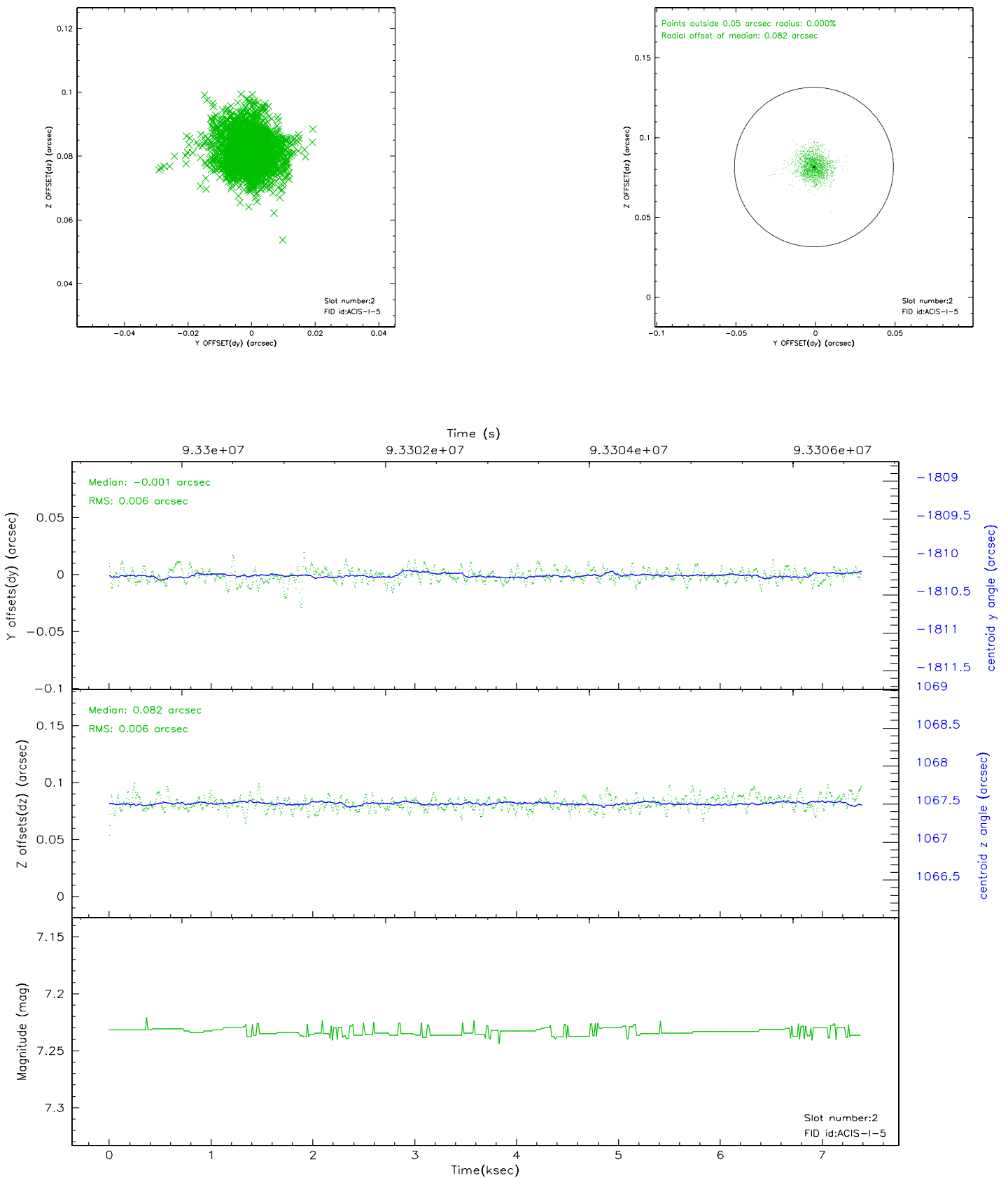
### 2.5.1 Slot 0



## 2.5.2 Slot 1

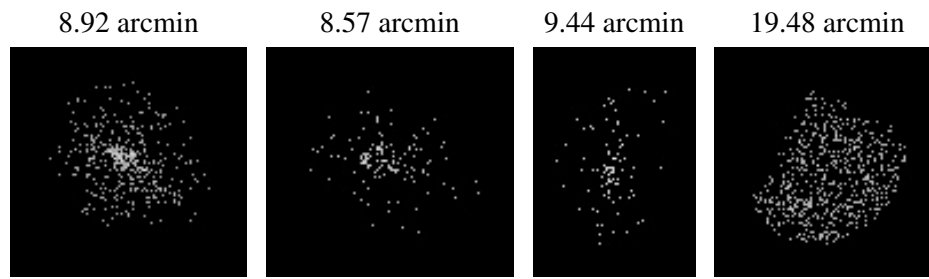


### 2.5.3 Slot 2





### 3 Point Sources



# A Summary

## A.1 Status

V&V Scientist	Joy Nichols
V&V Date (YYYY-MM-DD)	2010.10.01
V&V Edition	2
V&V Disposition and Status	OK
V&V Charge Time	6.96

## A.2 Comments

There are 2 observations with the obsid number 1317. They appear in separate spacecraft loads with these duplicate numbers. Because the 2 obsids used different instrument configurations, the telemetry file of the other obsid 1317 was edited to create a new obsid number, obsid 62870. This obsid retains the 1317 designation.