

V&V Reference Report

L2 ASCDS Version : 8.4.3

Observation 12507 - L2 Version 3
Chandra X-Ray Center

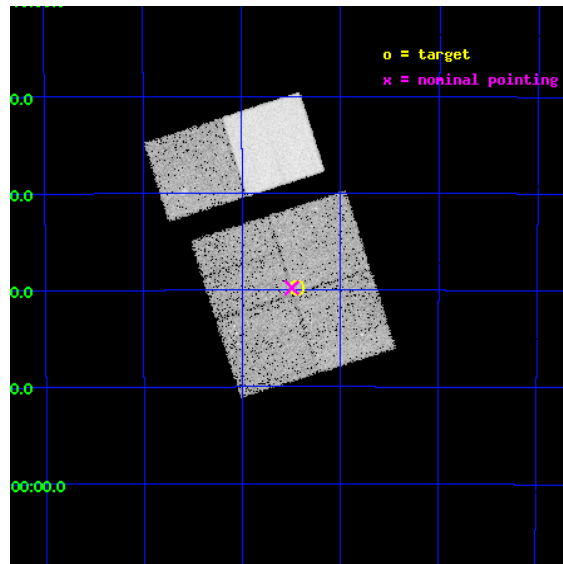
L2 Processing Date : Feb 11 2012

Contents

1	Front	2
2	OBI	3
2.1	OBI	3
2.1.1	Images	3
2.1.2	Bias	3
2.1.3	Parameters	4
2.1.4	Events	4
2.2	Compared Parameters	5
2.3	Aspect	6
2.4	Star Slots	9
2.4.1	Slot 3	9
2.4.2	Slot 4	10
2.4.3	Slot 5	11
2.4.4	Slot 6	12
2.4.5	Slot 7	13
2.5	FID Slots	14
2.5.1	Slot 0	14
2.5.2	Slot 1	15
2.5.3	Slot 2	16
A	Summary	17
A.1	Status	17
A.2	Comments	17

1 Front

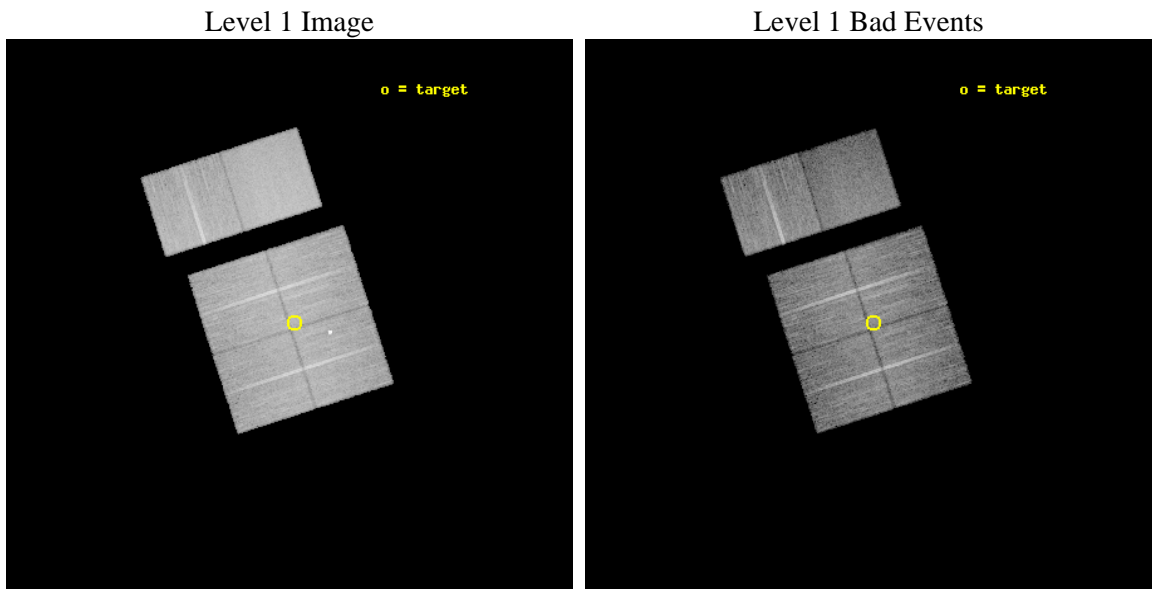
seq_num	401248	Sequence number
obs_id	12507	Observation id
title	Census of the Normal Spiral Arm Region	Proposal title
observer	Dr. John Tomsick	Principal investigator
object	Norma Region	Source name
dtcycle	0	
cycle	P	events from which exps? Prim/Second/Both
ra_targ	250.36145	Observer's specified target RA [deg]
dec_targ	-46.662887	Observer's specified target Dec [deg]
ra_nom	250.37320120326	Nominal RA [deg]
dec_nom	-46.662950521452	Nominal Dec [deg]
roll_nom	342.21723694473	Nominal Roll [deg]
revision	3	Processing version of data
ontime	19052.534872055	Sum of GTIs [s]
livetime	18811.280203446	Livetime [s]
ontime0	19055.652782381	Sum of GTIs [s]
ontime1	19045.970721006	Sum of GTIs [s]
ontime2	19052.493812025	Sum of GTIs [s]
ontime3	19052.534872055	Sum of GTIs [s]
ontime6	19055.857982397	Sum of GTIs [s]
ontime7	19055.816942394	Sum of GTIs [s]
l2events	134094	Number of level 2 events



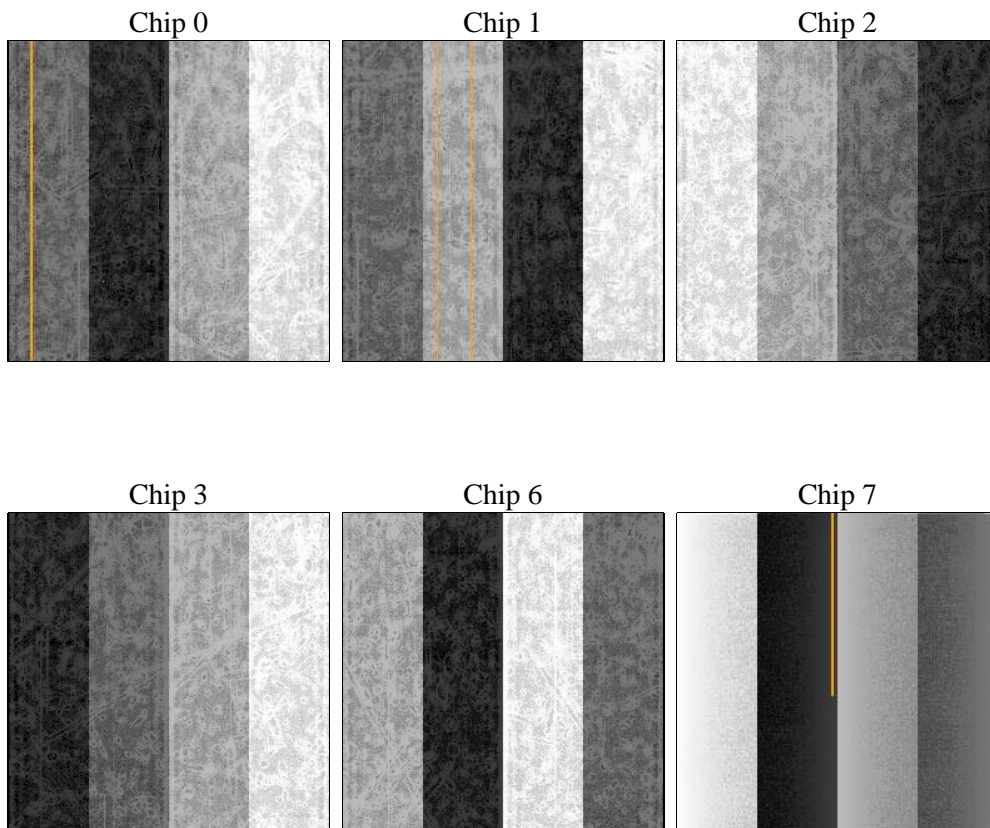
2 OBI

2.1 OBI

2.1.1 Images



2.1.2 Bias



2.1.3 Parameters

obi_num	0	Obi number	sched_exp_time	19000.000000	[s] Scheduled observation exposure time
ascdsver	8.4.3	Processing system revision	ontime	19052.534872055	Sum of GTIs [s]
caldsver	4.4.7	 	ontime0	19055.652782381	Sum of GTIs [s]
date	2012-02-11T17:36:49	Date and time of file creation	ontime1	19045.970721006	Sum of GTIs [s]
revision	3	Processing version of data	ontime2	19052.493812025	Sum of GTIs [s]
			ontime3	19052.534872055	Sum of GTIs [s]
			ontime6	19055.857982397	Sum of GTIs [s]
			ontime7	19055.816942394	Sum of GTIs [s]
			l1events	753752	Number of level 1 events

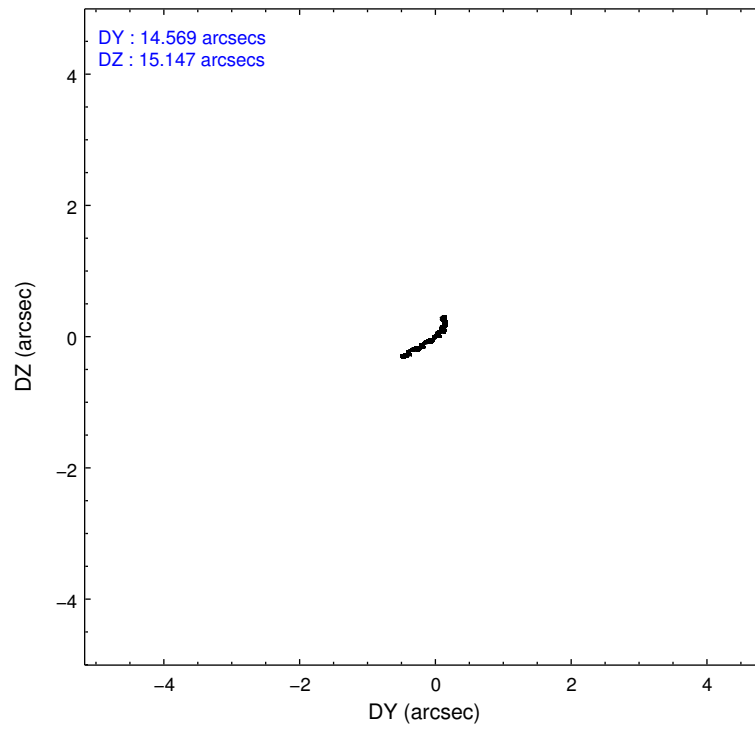
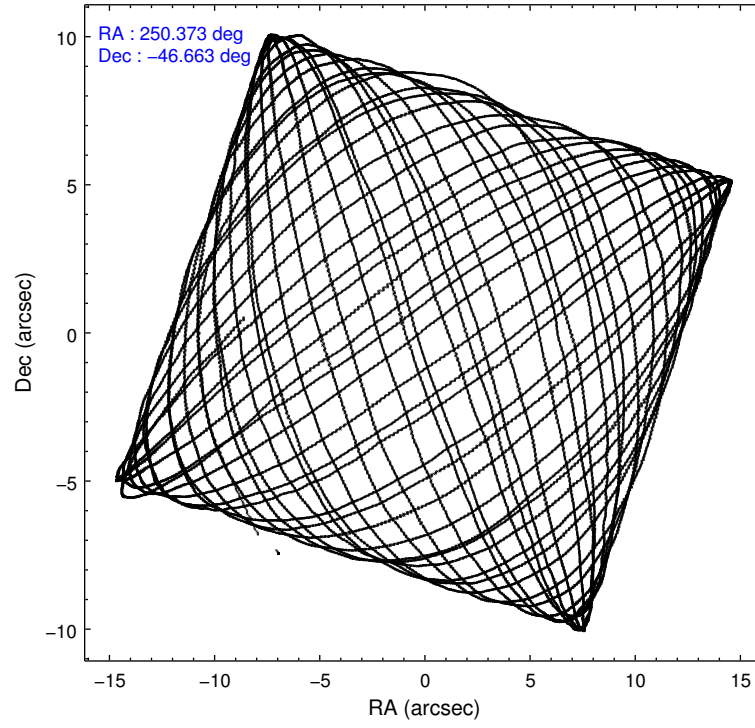
2.1.4 Events

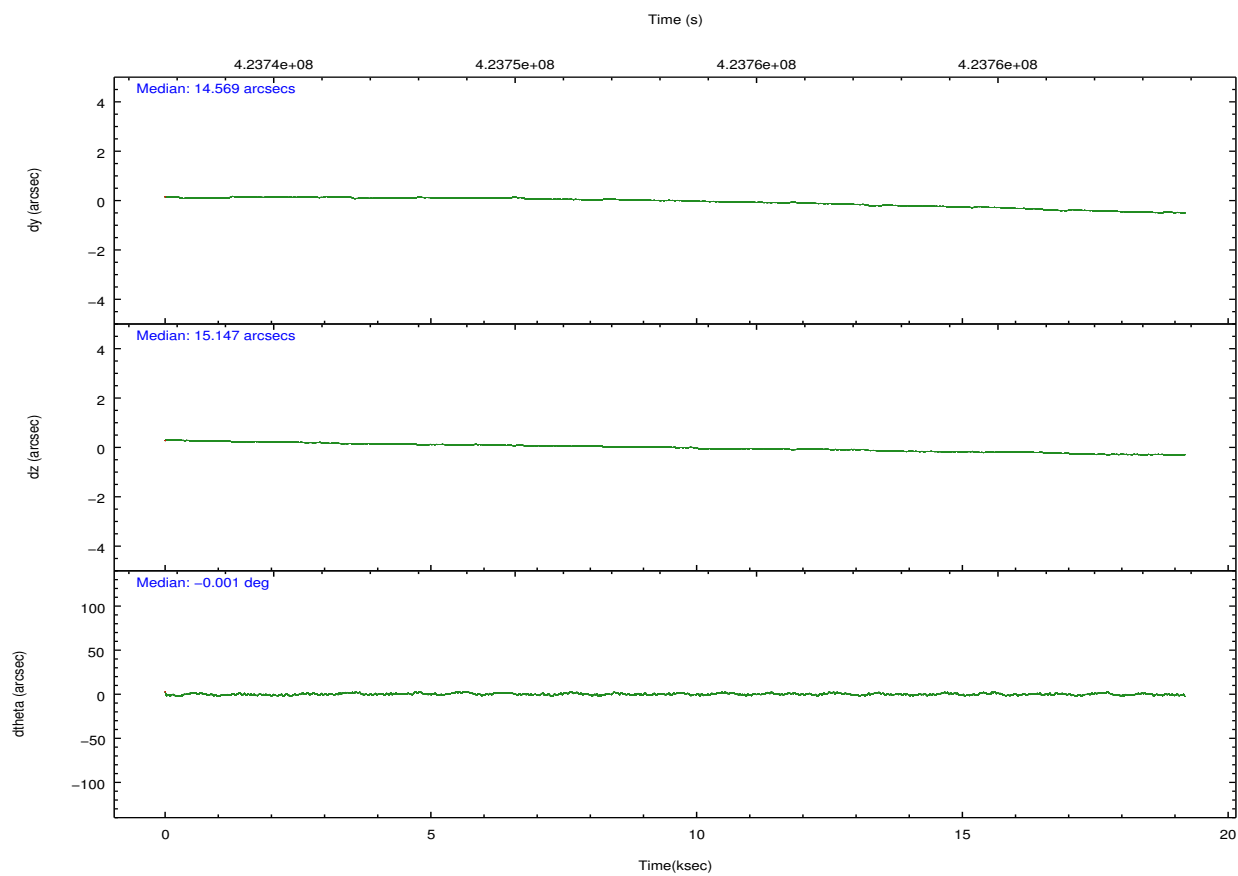
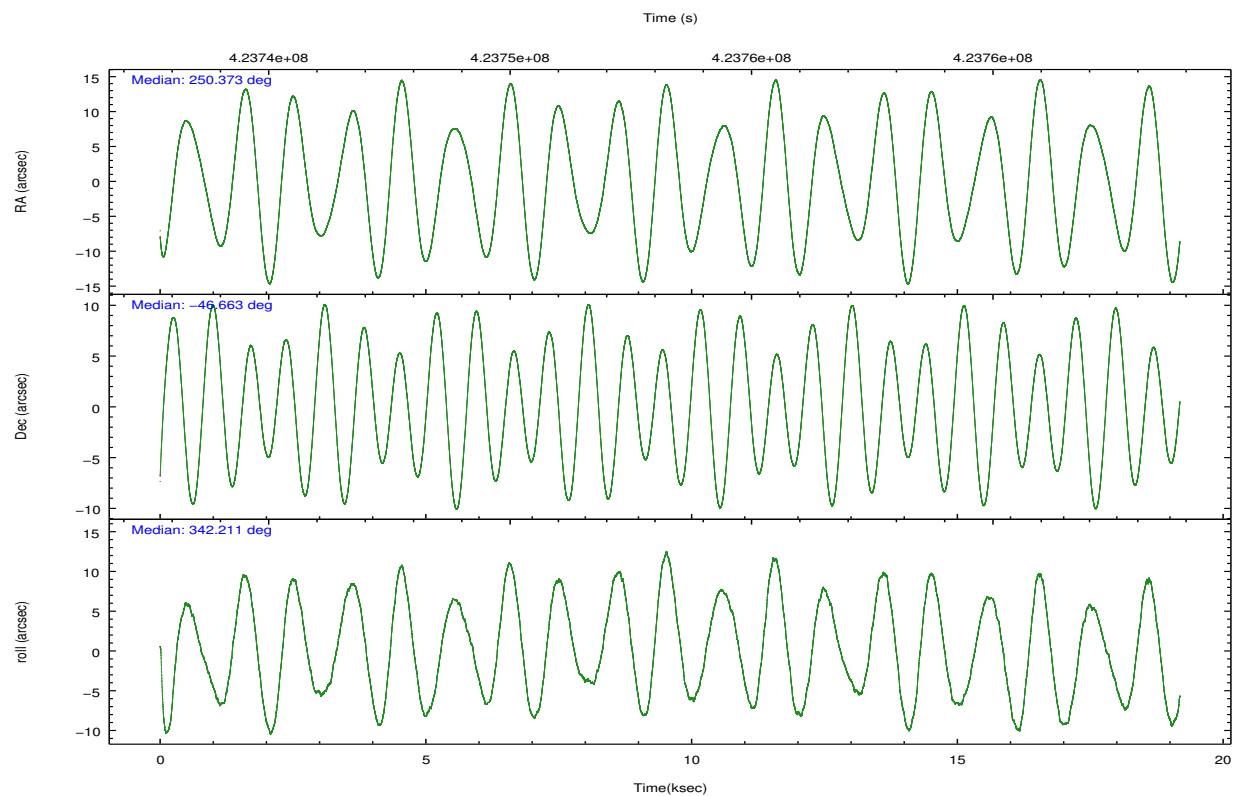
	ccd 0	ccd 1	ccd 2	ccd 3	ccd 6	ccd 7		ccd 0	ccd 1	ccd 2	ccd 3	ccd 6	ccd 7
level 1 events	110284	116580	123175	121696	127026	154991	grade 0 events	5977	8780	5918	6038	6036	6624
rejected events	95073	97680	108457	106944	111303	84235		5%	7%	4%	4%	4%	4%
rejected %	86%	83%	88%	87%	87%	54%	grade 1 events	72	98	74	77	65	206
								0%	0%	0%	0%	0%	0%
							grade 2 events	3549	3699	3391	3028	3461	14806
								3%	3%	2%	2%	2%	9%
							grade 3 events	1530	1579	1370	1471	1460	6079
								1%	1%	1%	1%	1%	3%
							grade 4 events	1422	1540	1403	1429	1520	6102
								1%	1%	1%	1%	1%	3%
							grade 5 events	4885	5225	4479	5544	5875	16084
								4%	4%	3%	4%	4%	10%
							grade 6 events	2740	3306	2636	2787	3248	37159
								2%	2%	2%	2%	2%	23%
							grade 7 events	90109	92353	103904	101322	105361	67931
								81%	79%	84%	83%	82%	43%

2.2 Compared Parameters

Parameter	Planned	Actual	Parameter	Planned	Actual
Instrument	ACIS	ACIS	Obspar format version number	7	7
Detector	ACIS-012367	ACIS-012367	Obspar file type	PREDICTED	ACTUAL
Grating	NONE	NONE	Obspar update status	NONE	UPDATED
Data mode	VFAINT	VFAINT	CCD I0 on	Y	Y
Observation mode	POINTING	POINTING	CCD I1 on	Y	Y
[deg] Pointing RA	250.334105	250.3732012032624	CCD I2 on	Y	Y
[deg] Pointing Dec	-46.668881	-46.66295052145238	CCD I3 on	Y	Y
[deg] Pointing Roll	341.980111	342.217236944726	CCD S0 on	N	N
[mm] SIM focus pos	-0.782348	-0.7809083437167272	CCD S1 on	N	N
[mm] SIM defocus	0	0.001439871863259334	CCD S2 on	O2	Y
[mm] SIM translation stage pos	-233.592463	-233.5874344608287	CCD S3 on	O1	Y
[mm] SIM translation stage offset	0	-0.005018542100998502	CCD S4 on	N	N
[s] Observation start time (MET)	423743899.184000	423742553.98549	CCD S5 on	N	N
Observation start date	2011-06-06T10:37:13	2011-06-06T10:15:53	Number of optional ACIS chips dropped	0	0
[s] Observation end time (MET)	423762899.184000	423763033.99905	On-chip summing requested	N	N
Observation end date	2011-06-06T15:53:53	2011-06-06T15:57:13	Subarray requested	NONE	NONE
Read mode	TIMED	TIMED	Alternating exposures requested	N	N
			[s] Primary exposure time	0.000000	3.2

2.3 Aspect



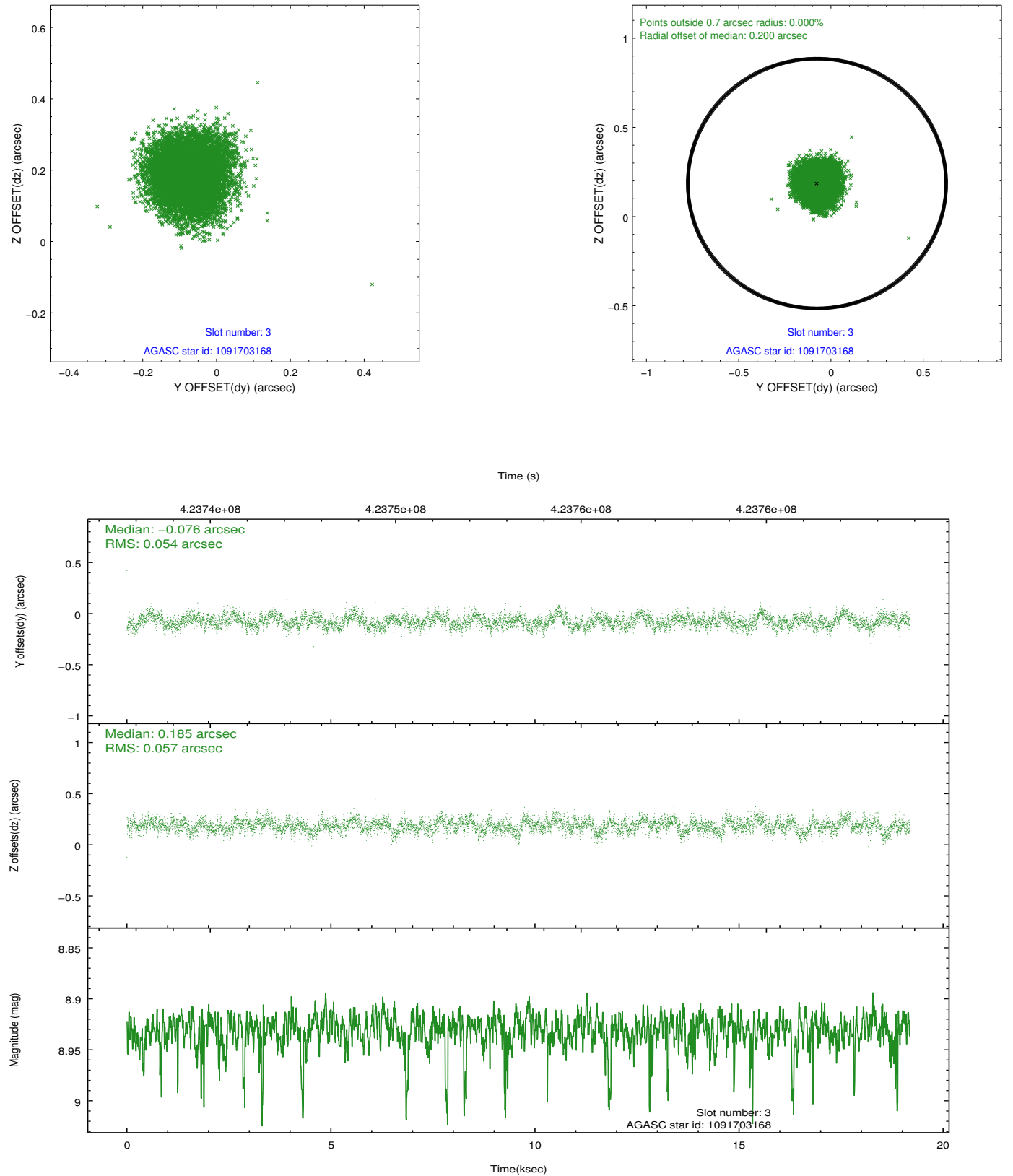


Slot Statistics

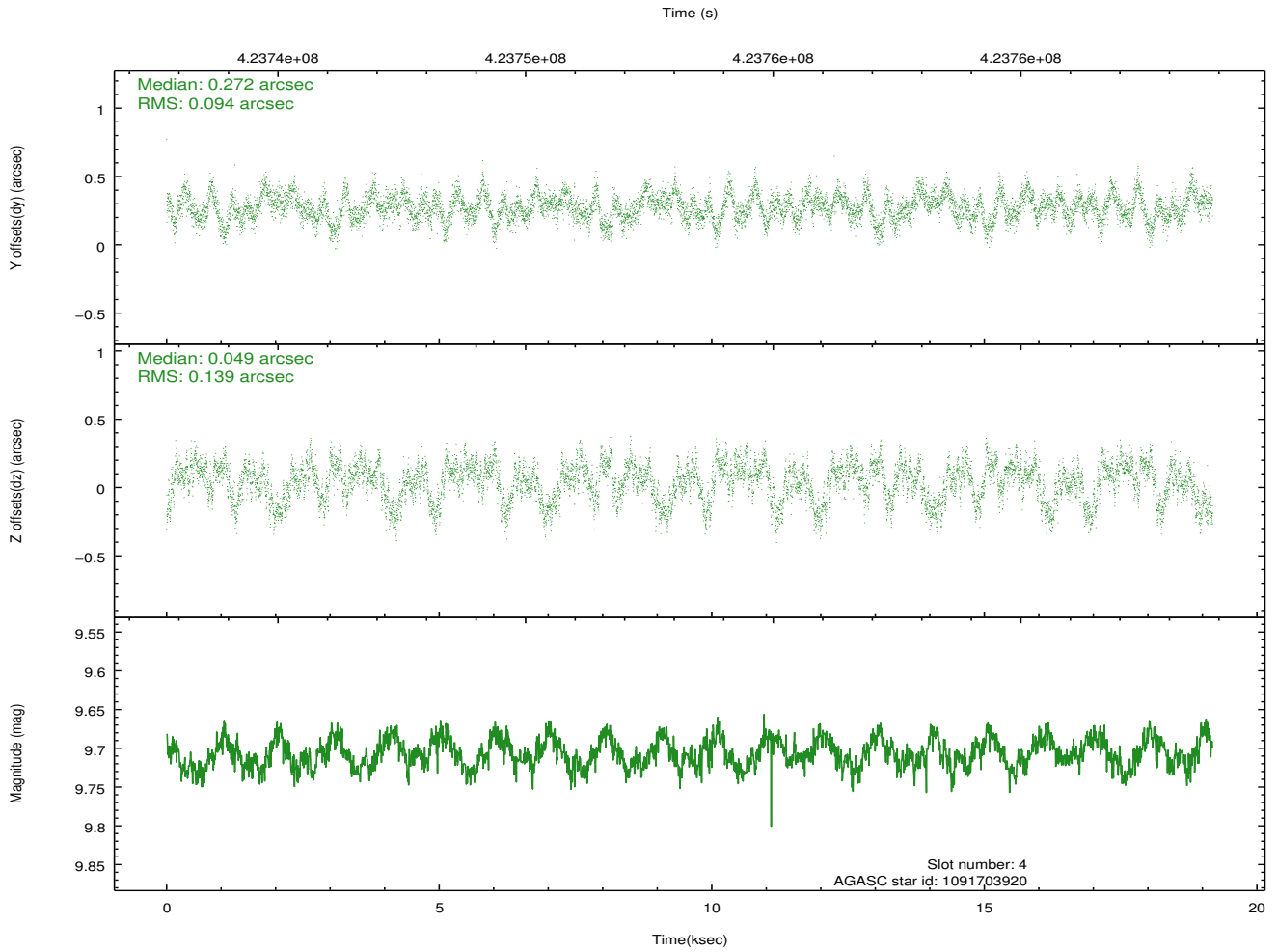
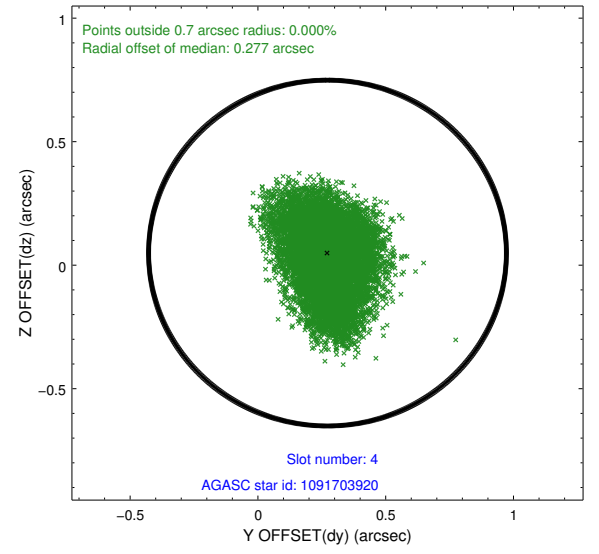
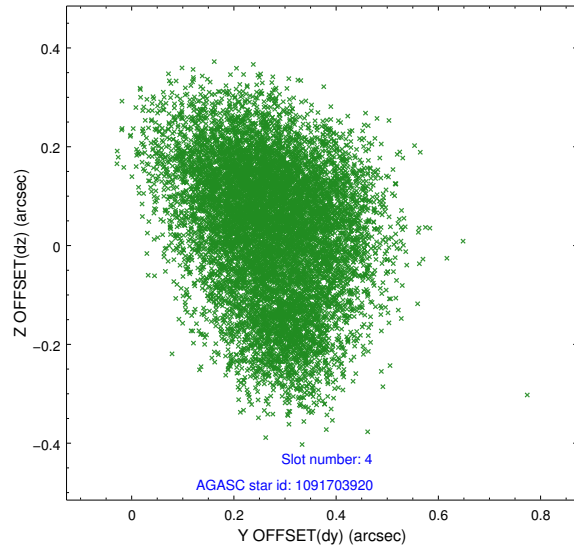
slot	status	id	mag	n_pts	med_dy	med_dz	dr1	dr2	ra	dec	mean_y	mean_z
0	FID	ACIS-I-1	7.09	4680	0.026	0.034	0.012	0.019	0.000000	0.000000	924.99	-838.72
1	FID	ACIS-I-2	6.99	4680	-0.126	-0.060	0.013	0.023	0.000000	0.000000	-769.14	-845.32
2	FID	ACIS-I-6	7.08	4680	0.009	0.093	0.011	0.019	0.000000	0.000000	390.56	1703.06
3	GUIDE	1091703168	8.93	9334	-0.076	0.185	0.083	0.133	249.174634	-47.078871	-2239.41	-2302.78
4	GUIDE	1091703920	9.71	9349	0.272	0.049	0.181	0.288	249.858992	-46.910499	-840.35	-1192.10
5	GUIDE	1091704704	10.11	9294	0.094	0.243	0.241	0.366	249.457504	-47.039620	-1627.89	-1945.79
6	GUIDE	1091842752	7.50	9292	0.016	-0.052	0.097	0.151	250.934866	-47.105704	1888.47	-1045.35
7	GUIDE	1091334688	6.13	9359	-0.313	-0.414	0.083	0.126	250.764858	-46.070295	357.51	2378.92

2.4 Star Slots

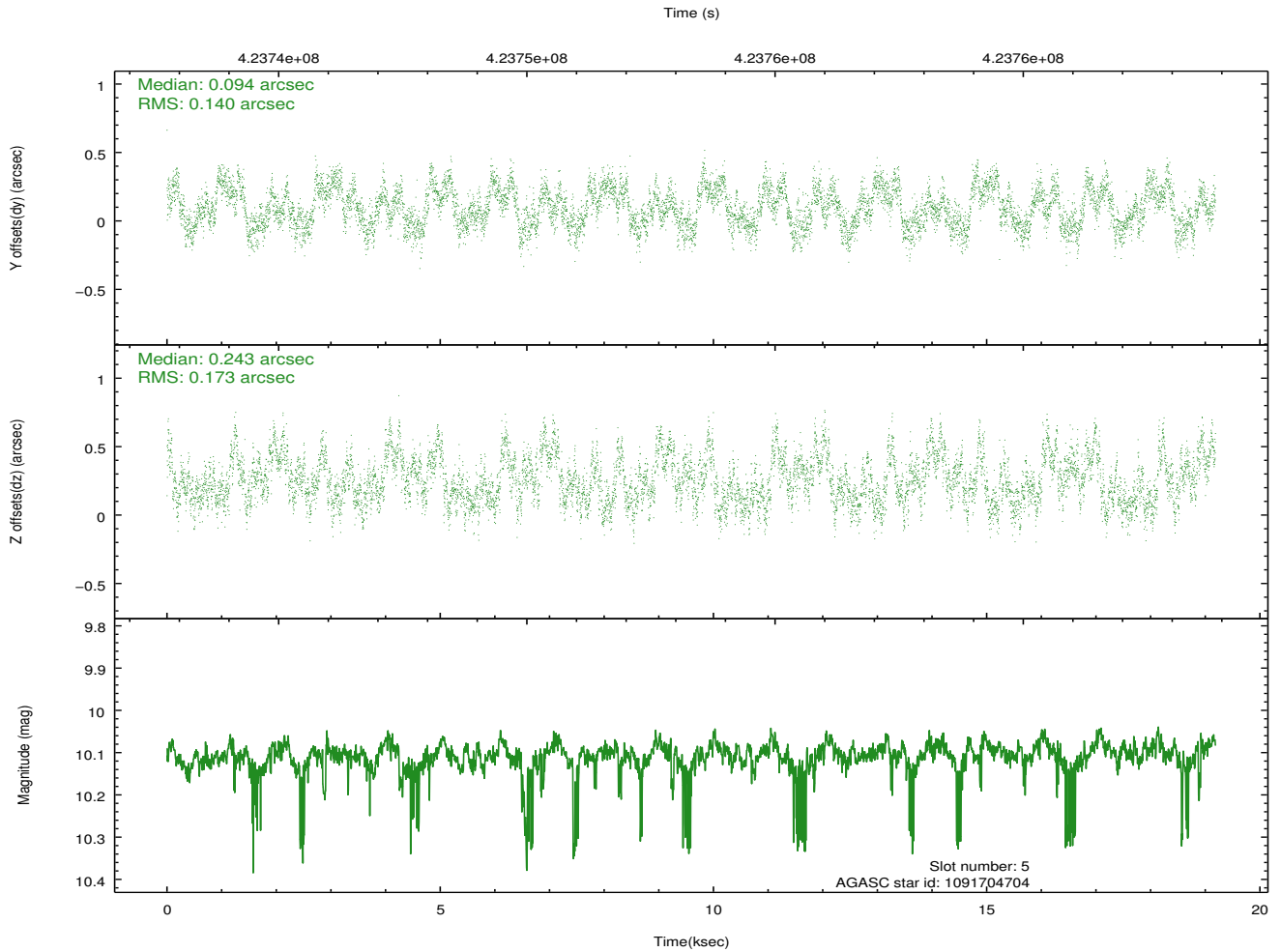
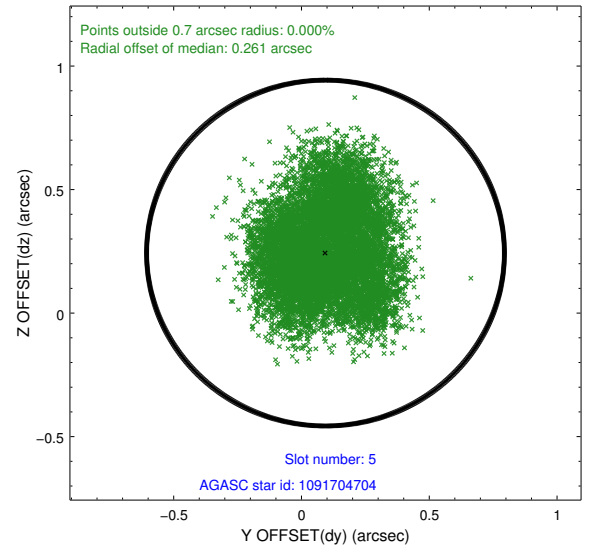
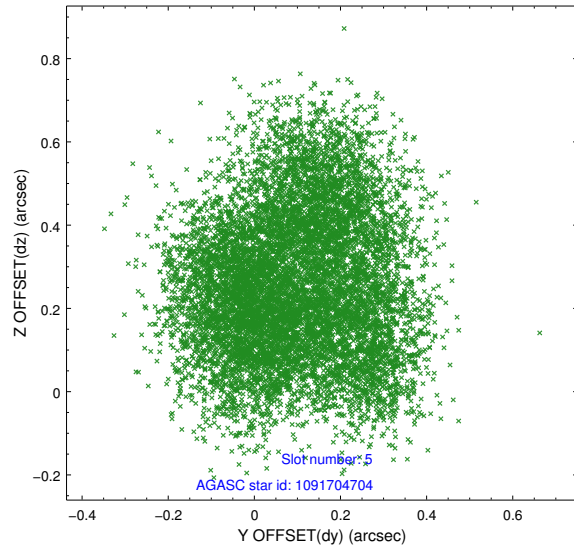
2.4.1 Slot 3



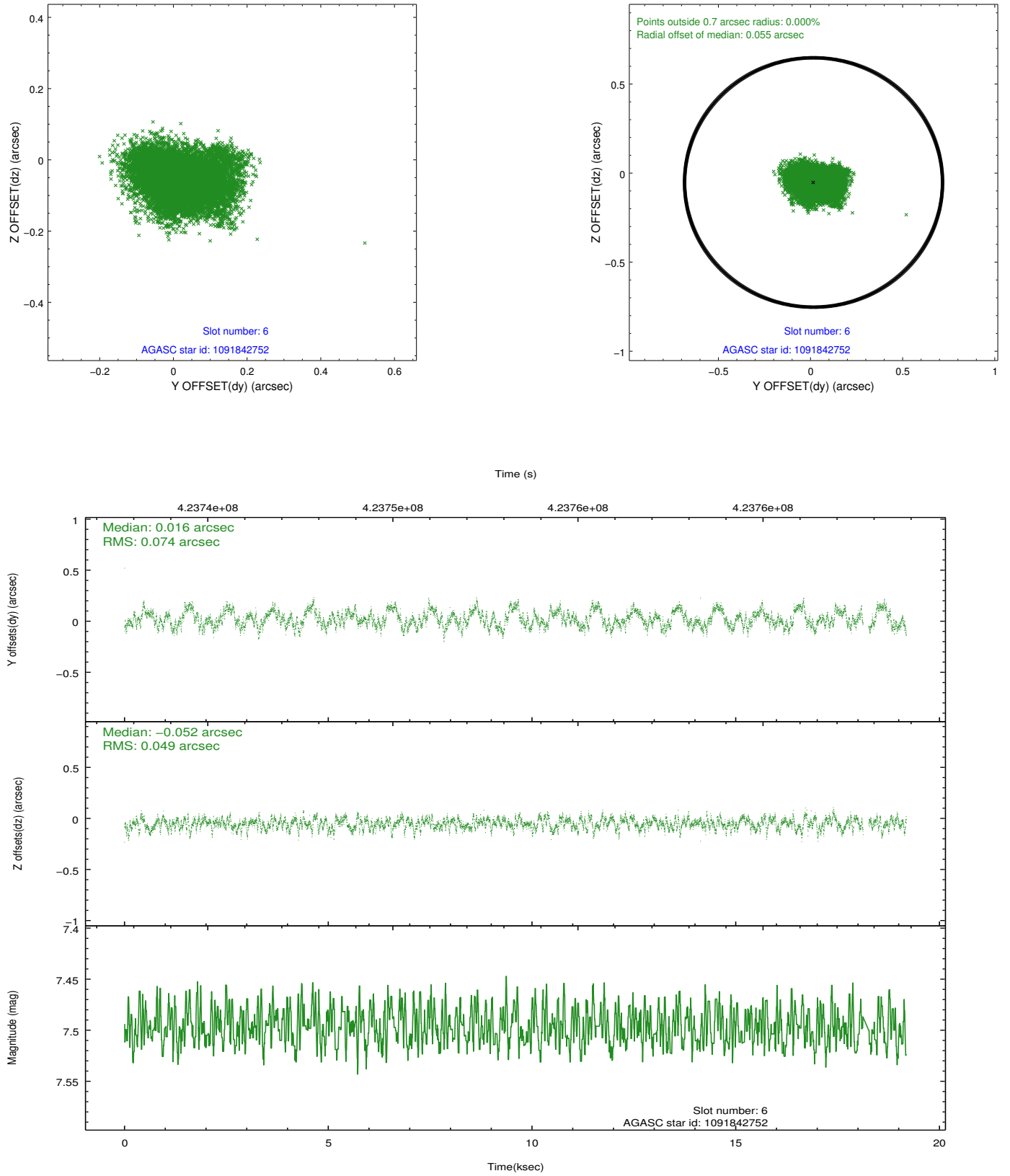
2.4.2 Slot 4



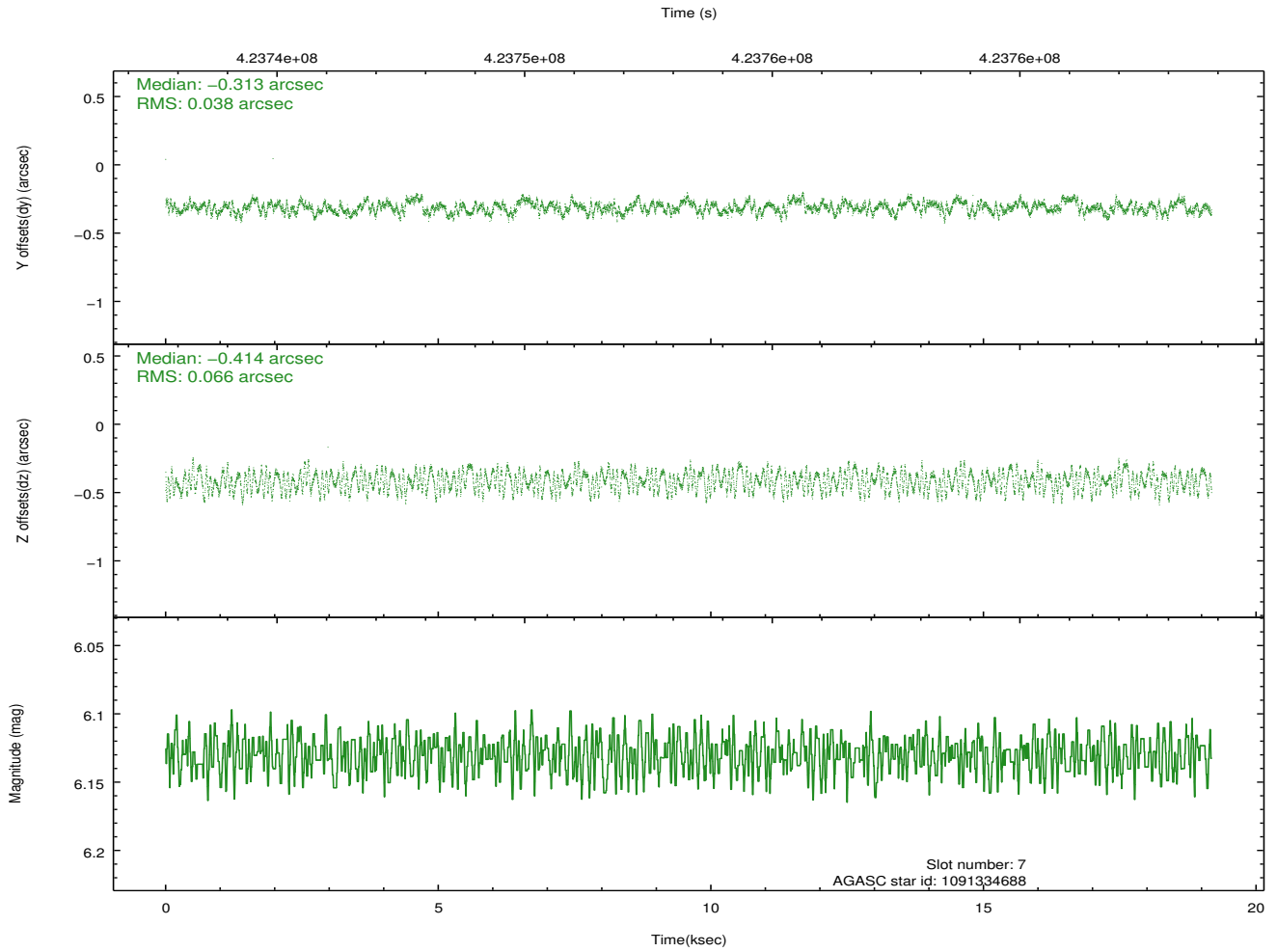
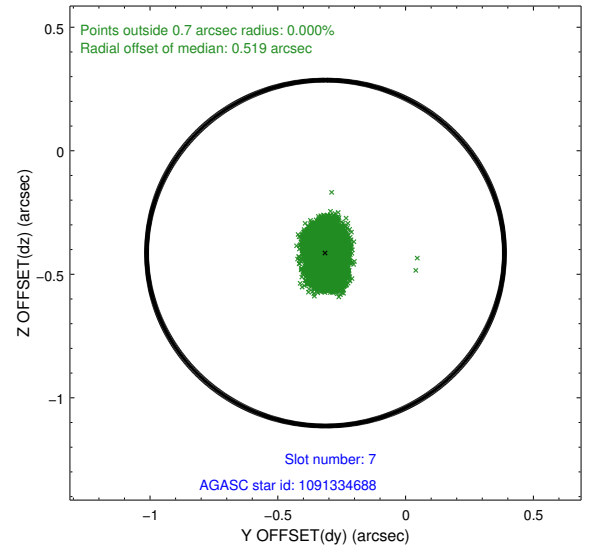
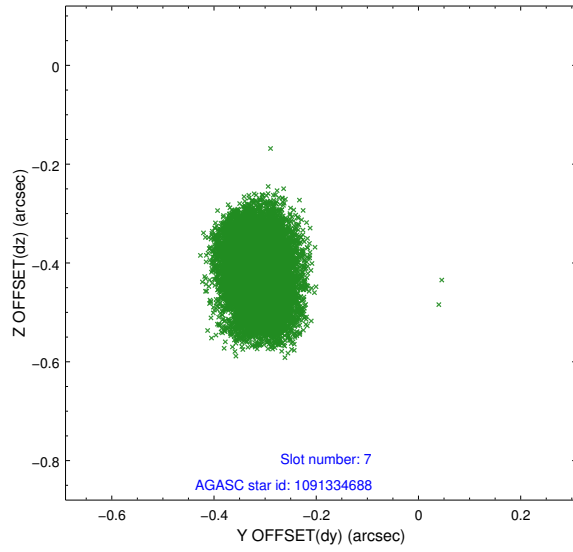
2.4.3 Slot 5



2.4.4 Slot 6

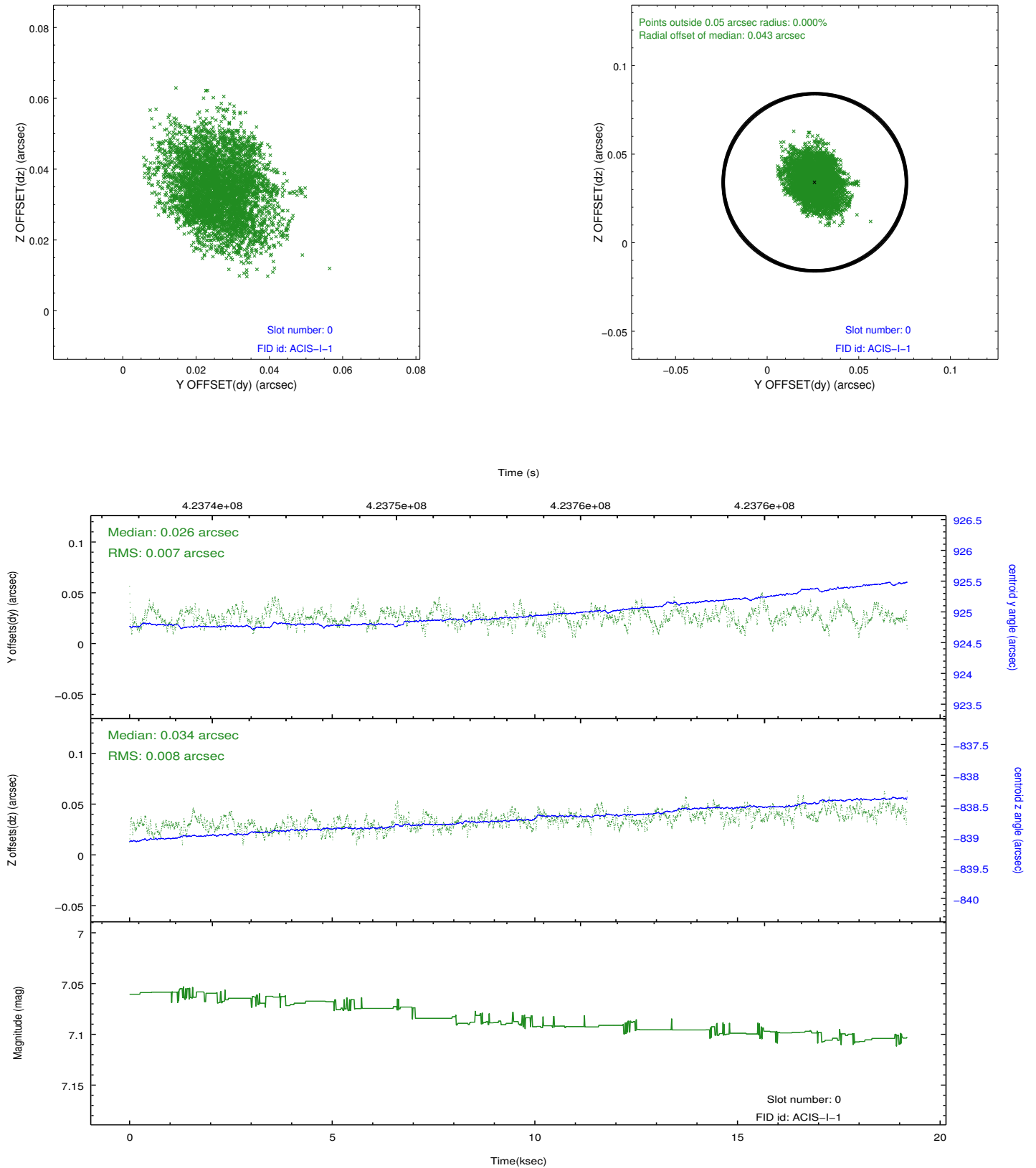


2.4.5 Slot 7

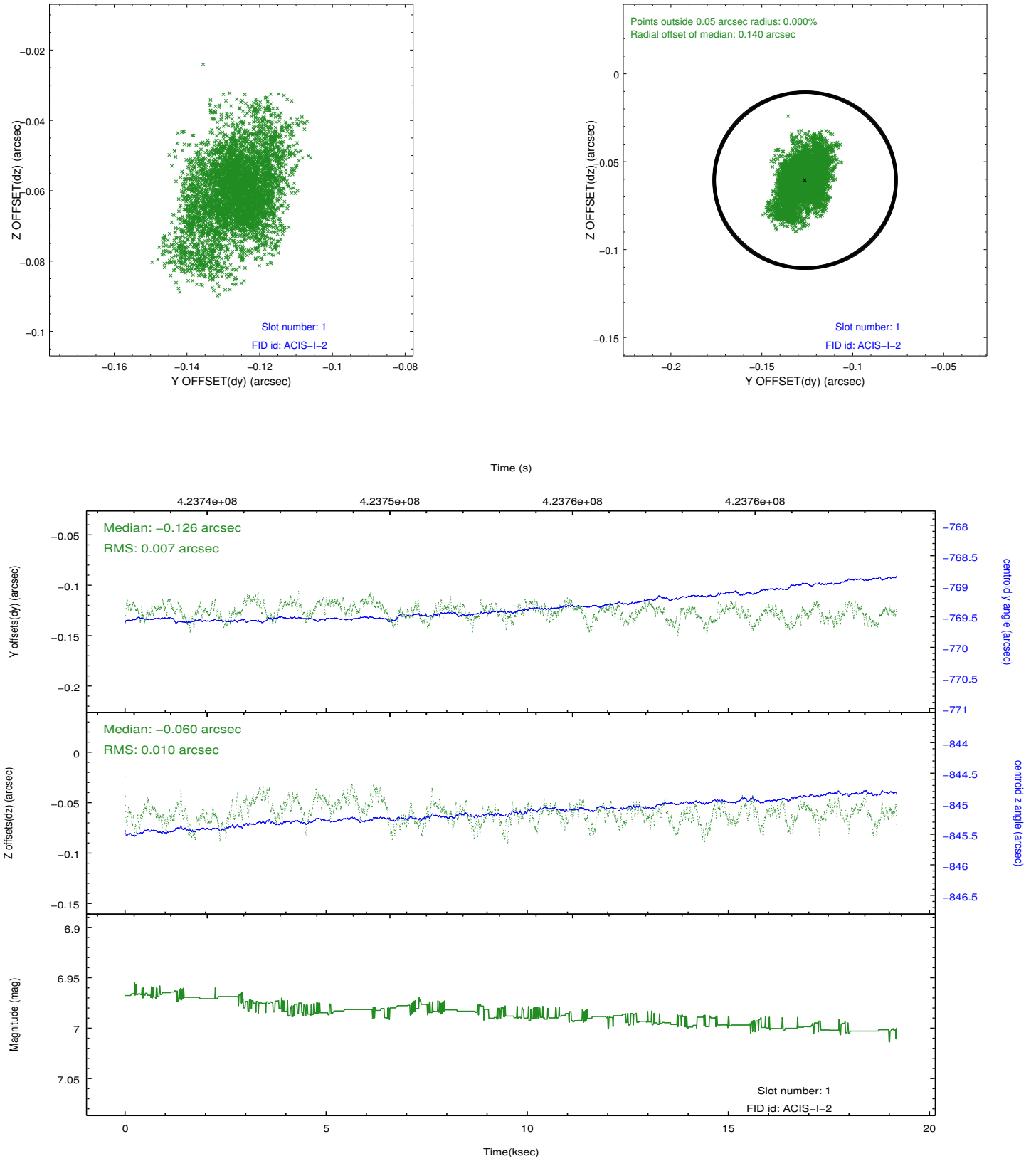


2.5 FID Slots

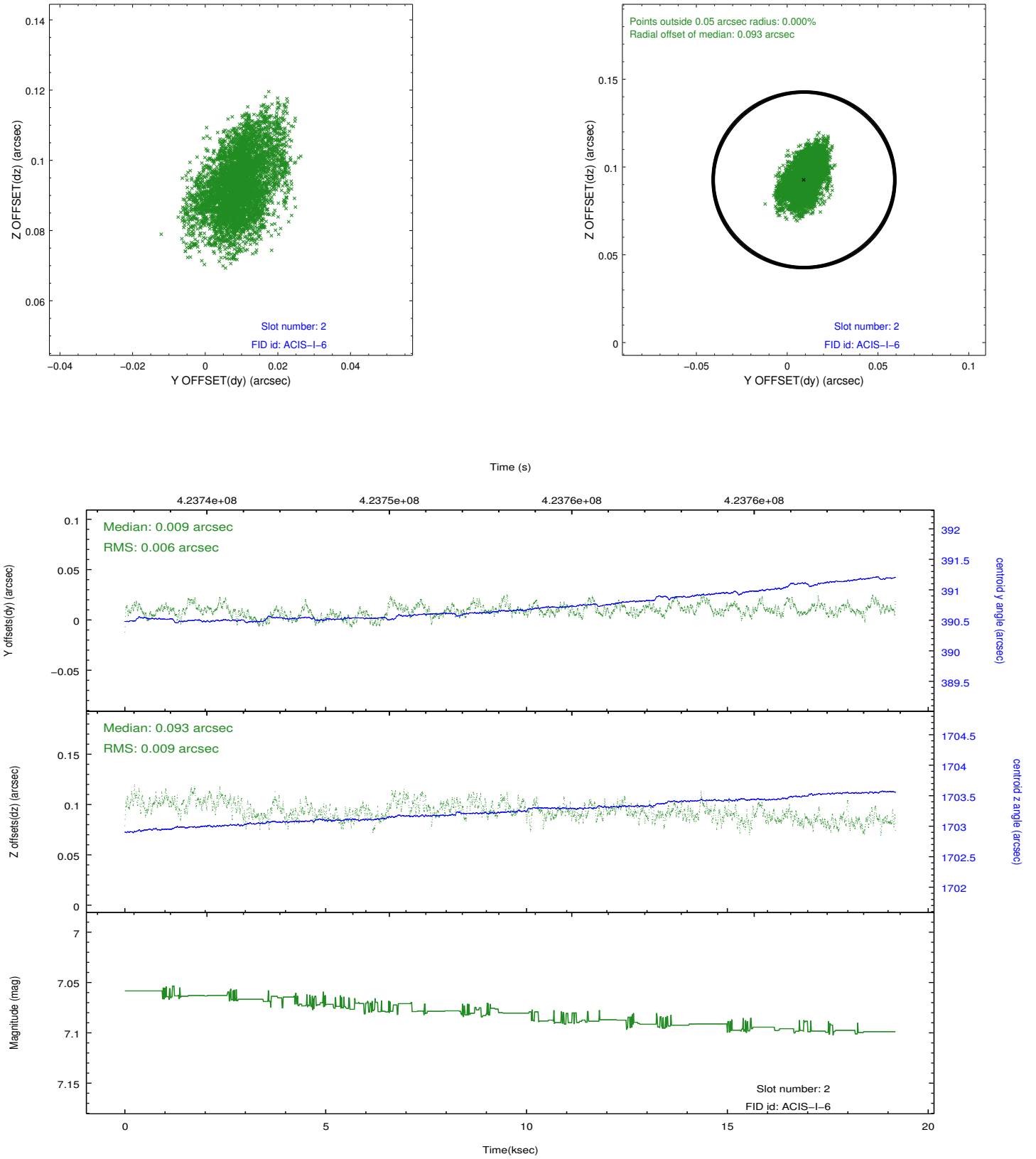
2.5.1 Slot 0



2.5.2 Slot 1



2.5.3 Slot 2



A Summary

A.1 Status

V&V Scientist	Jen Lauer
V&V Date (YYYY-MM-DD)	2012.02.14
V&V Edition	1
V&V Disposition and Status	OK
V&V Charge Time	19.052534866452

A.2 Comments

Joint proposal with NOAO.