

V&V Reference Report

L2 ASCDS Version : 8.4.5

Observation 12097 - L2 Version 2
Chandra X-Ray Center

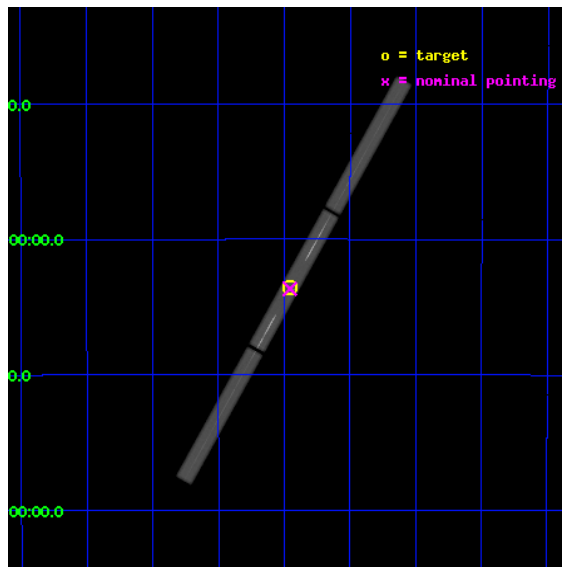
L2 Processing Date : Jun 27 2012

Contents

1	Front	2
2	OBI	3
2.1	OBI	3
2.1.1	Images	3
2.1.2	Parameters	4
2.1.3	Events	4
2.2	Compared Parameters	5
2.3	Aspect	6
2.4	Star Slots	9
2.4.1	Slot 3	9
2.4.2	Slot 4	10
2.4.3	Slot 5	11
2.4.4	Slot 6	12
2.4.5	Slot 7	13
2.5	FID Slots	14
2.5.1	Slot 0	14
2.5.2	Slot 1	15
2.5.3	Slot 2	16
3	Gratings	17
3.1	LETG Arm	17
A	Summary	19
A.1	Status	19
A.2	Comments	19

1 Front

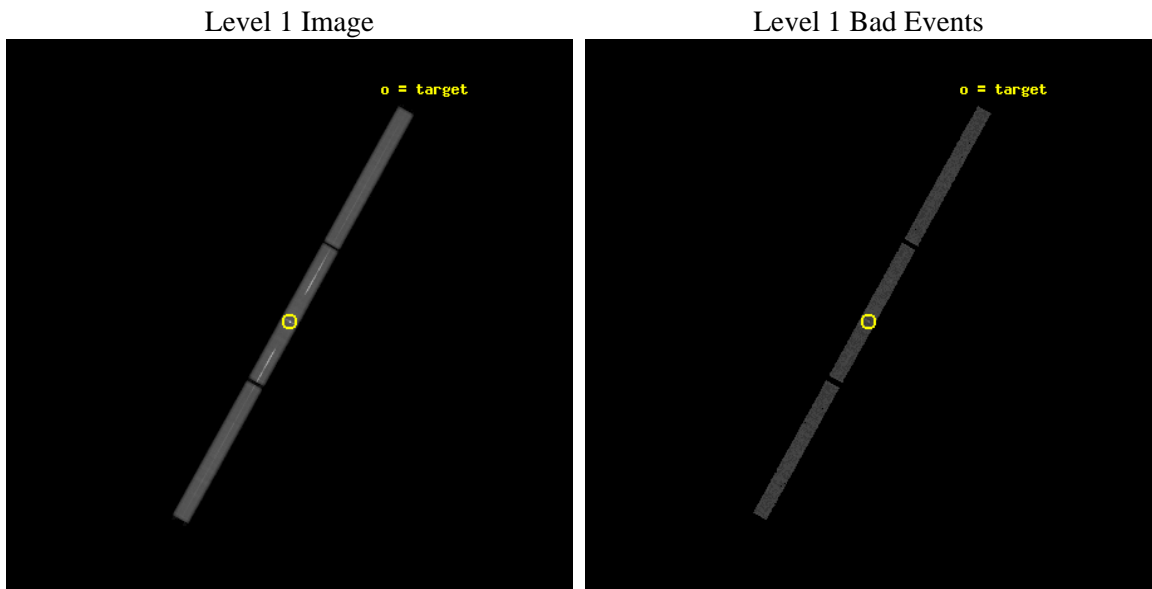
seq_num	300274	Sequence number
obs_id	12097	Observation id
title	The early SSS phase of the Classical Nova KT Eri	Proposal title
observer	Dr. Jan-Uwe Ness	Principal investigator
object	KT Eri	Source name
ra_targ	71.975833	Observer's specified target RA [deg]
dec_targ	-10.178639	Observer's specified target Dec [deg]
ra_nom	71.97814614463	Nominal RA [deg]
dec_nom	-10.182842146734	Nominal Dec [deg]
roll_nom	299.12604460049	Nominal Roll [deg]
revision	2	Processing version of data
ontime	15183.582018971	[s]
livetime	14950.154281671	Ontime multiplied by DTCOR
l2events	1961189	Number of level 2 events



2 OBI

2.1 OBI

2.1.1 Images



2.1.2 Parameters

obi_num	0	Obi number	sched_exp_time	15000.000000	[s] Scheduled observation exposure time
ascdsver	8.4.5	Processing system revision	ontime	15183.582018971	[s]
caldsver	4.5.0	 	l1events	2467175	Number of level 1 events
date	2012-06-27T16:07:44	Date and time of file creation			
revision	2	Processing version of data			

2.1.3 Events

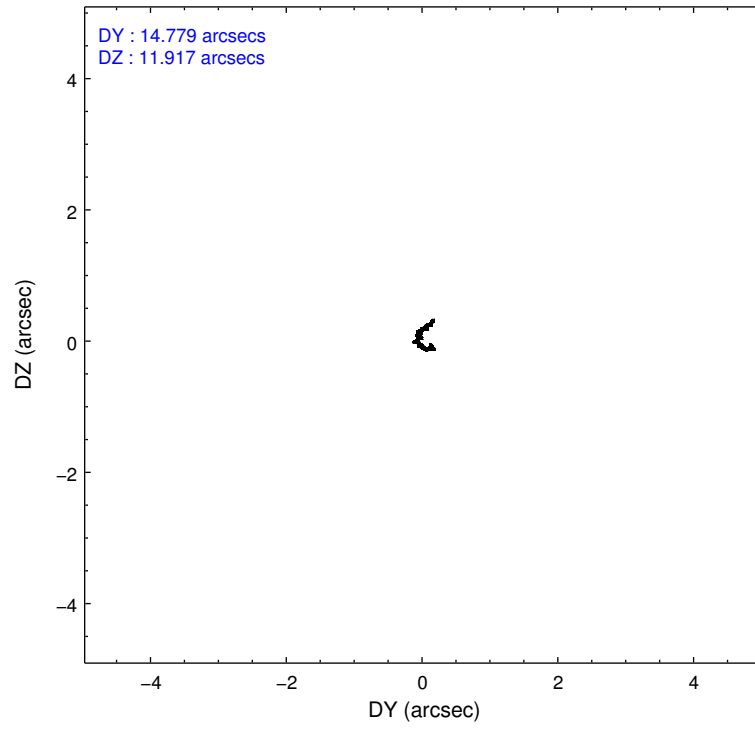
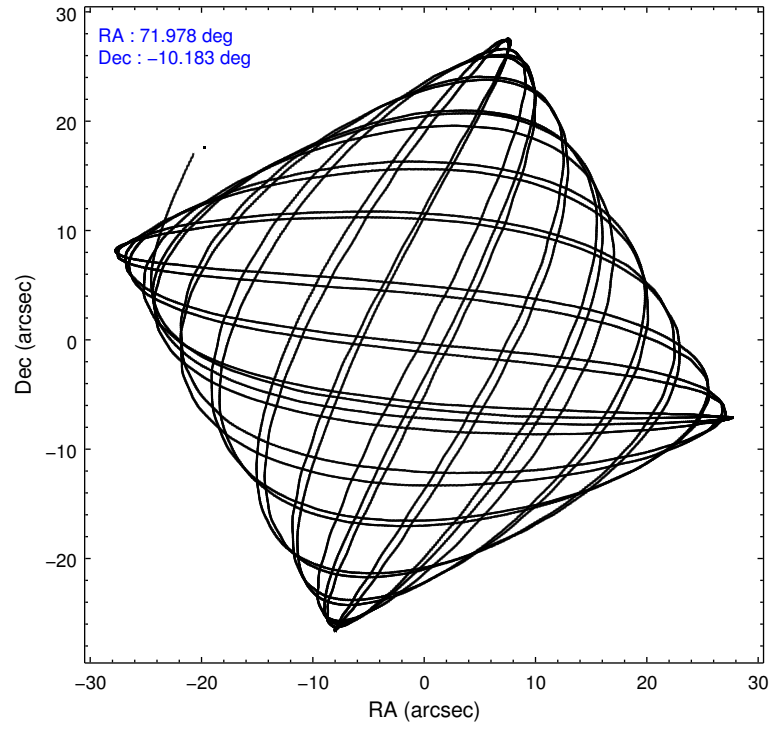
Level 1 Events

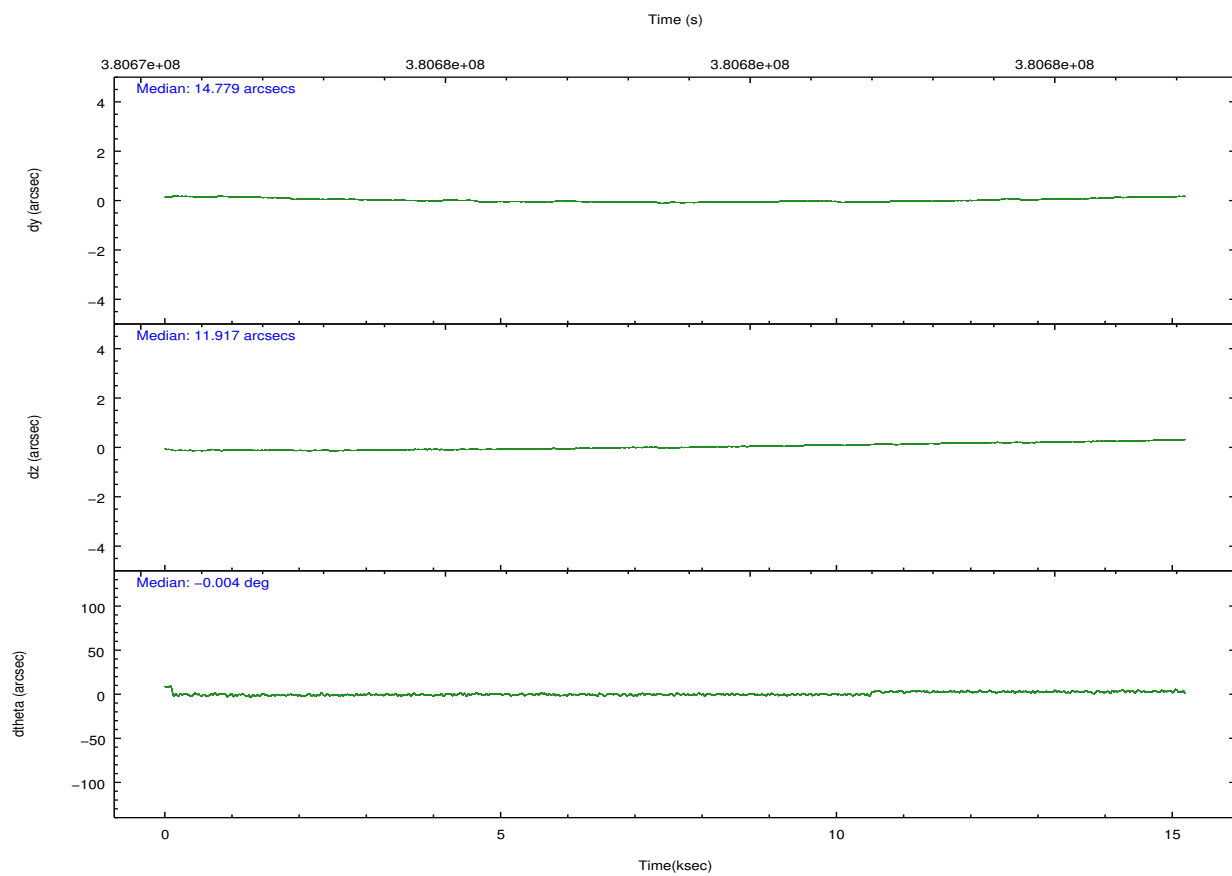
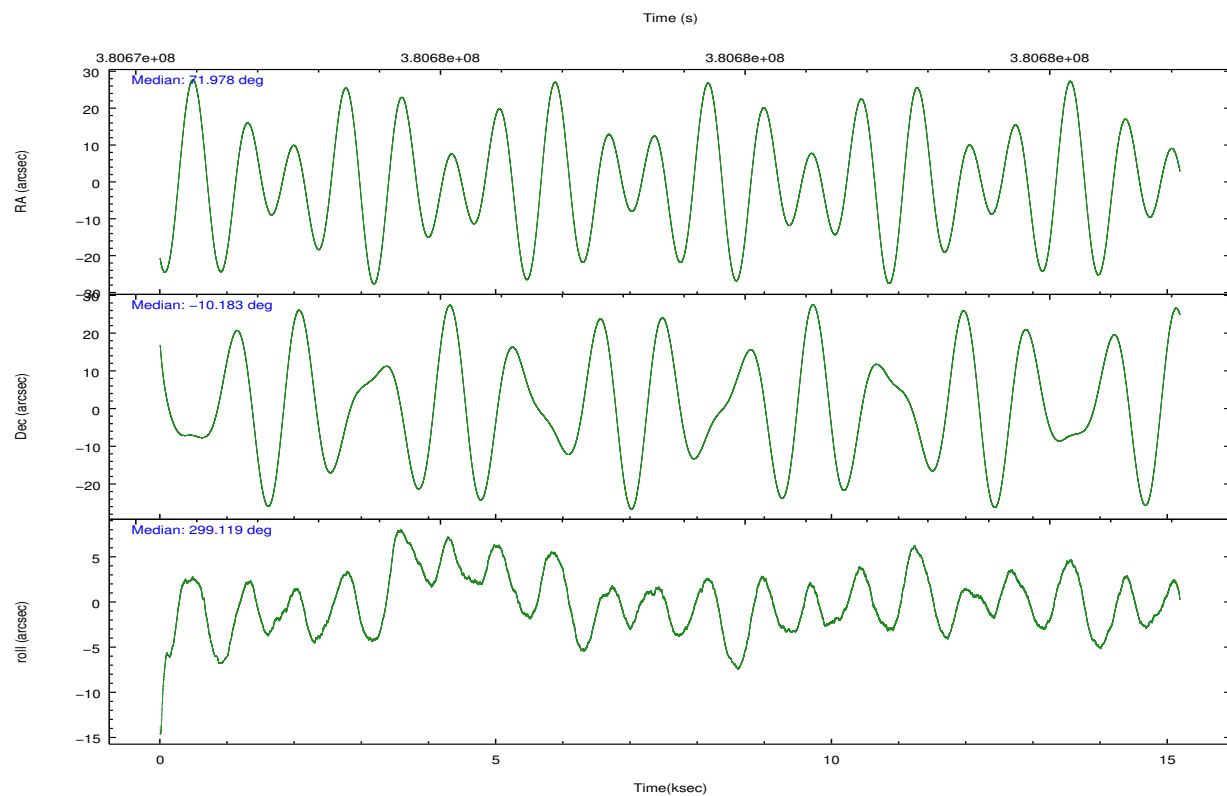
	segment 1	segment 2	segment 3
level 1 events	652510	1154887	659778
rejected events	33243	37124	33759
rejected %	5%	3%	5%

2.2 Compared Parameters

Parameter	Planned	Actual	Parameter	Planned	Actual
Instrument	HRC	HRC	Obspar format version number	7	7
Detector	HRC-S	HRC-S	Obspar file type	PREDICTED	ACTUAL
Grating	LETG	LETG	Obspar update status	NONE	UPDATED
Data mode	OBSERVING	OBSERVING			
Observation mode	POINTING	POINTING			
[deg] Pointing RA	71.952387	71.9781461446297			
[deg] Pointing Dec	-10.169349	-10.18284214673424			
[deg] Pointing Roll	299.054163	299.1260446004943			
[mm] SIM focus pos	-1.429586	-1.428180813131781			
[mm] SIM defocus	0.1037507710433287	0.1051558262725154			
[mm] SIM translation stage pos	250.455976	250.4635187648994			
[mm] SIM translation stage offset	0	-0.007540371344731511			
[s] Observation start time (MET)	380671358.184000	380670532.21183			
Observation start date	2010-01-23T22:01:32	2010-01-23T21:48:52			
[s] Observation end time (MET)	380686358.184000	380687130.03767			
Observation end date	2010-01-24T02:11:32	2010-01-24T02:25:30			

2.3 Aspect



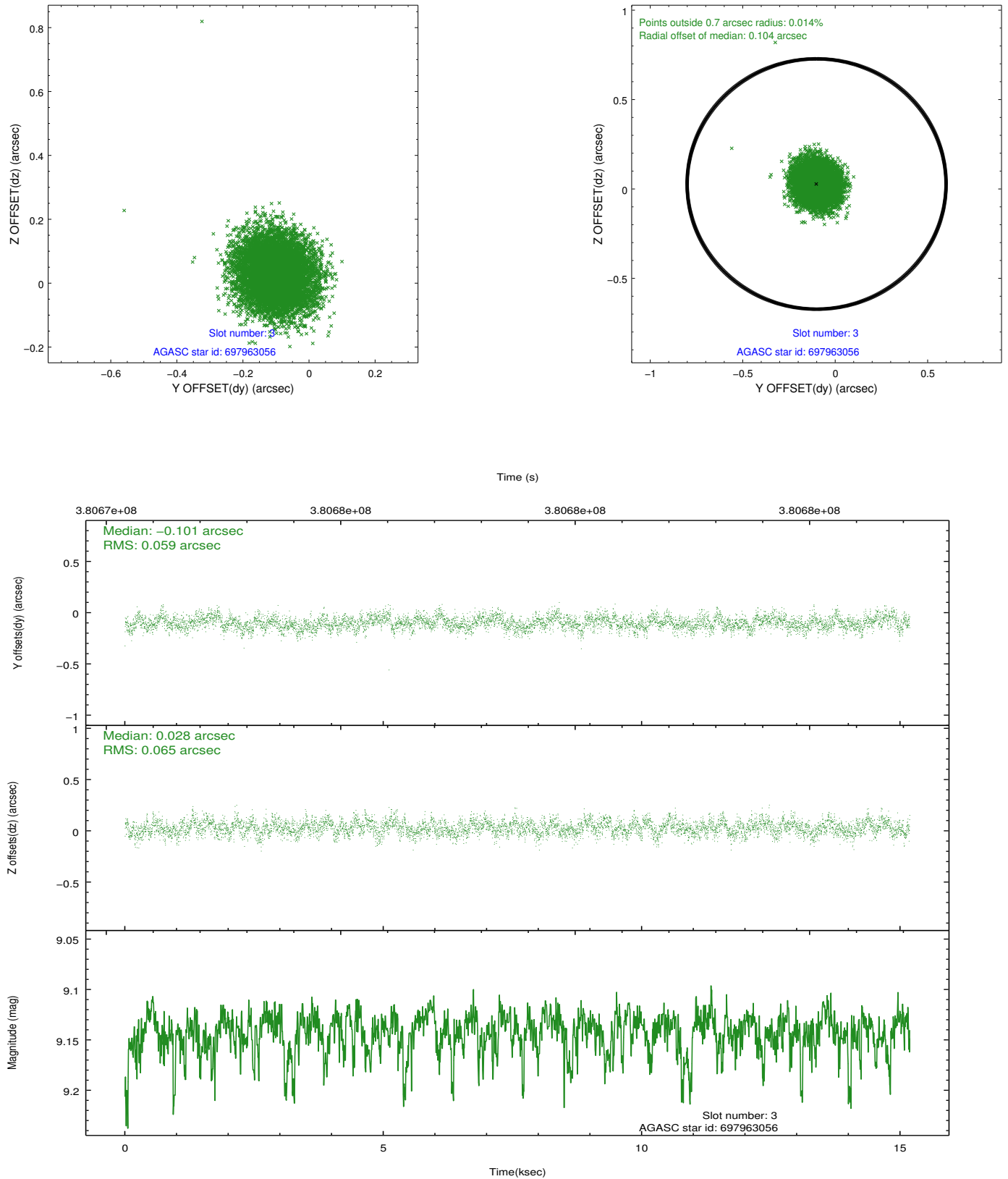


Slot Statistics

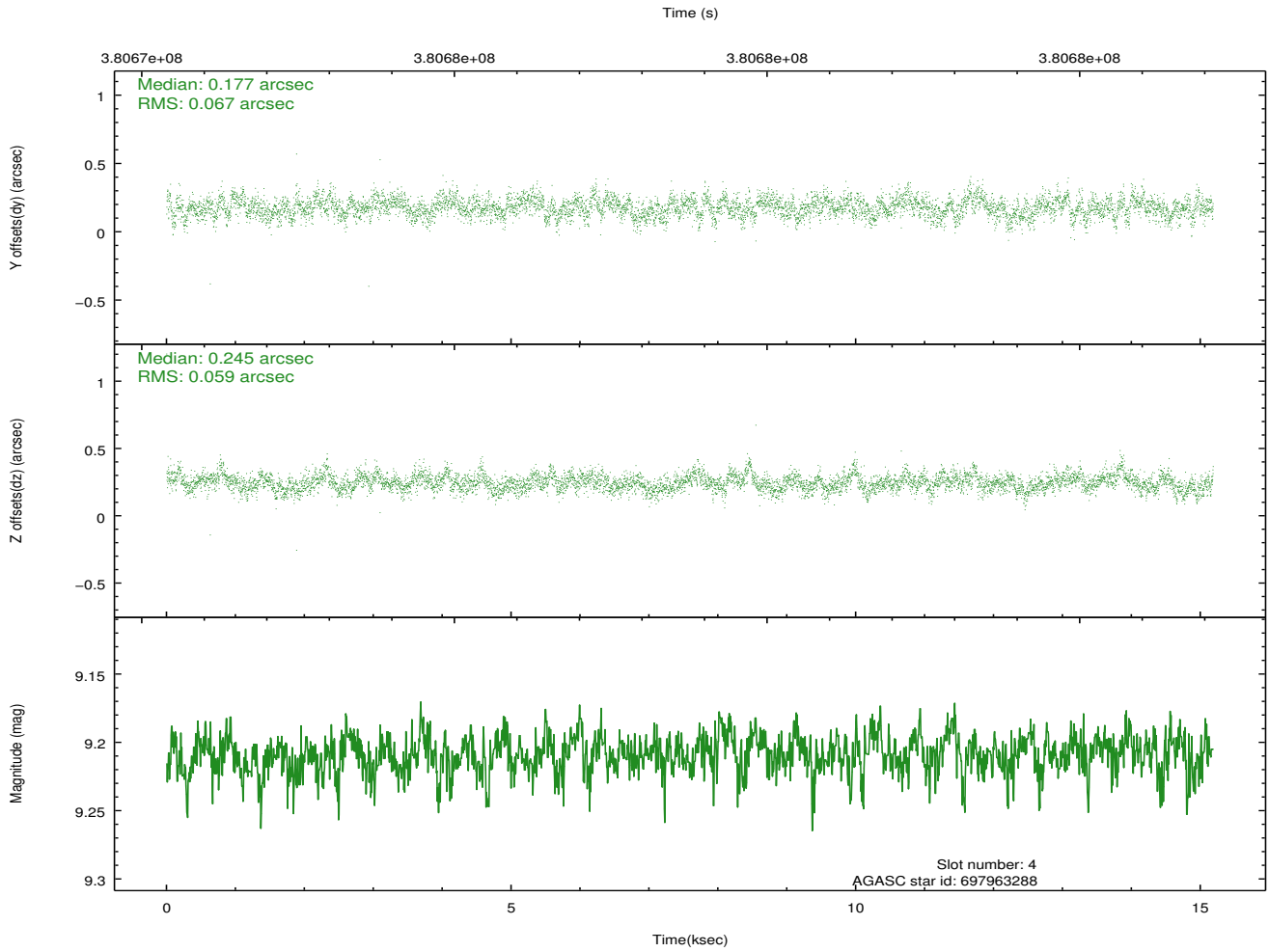
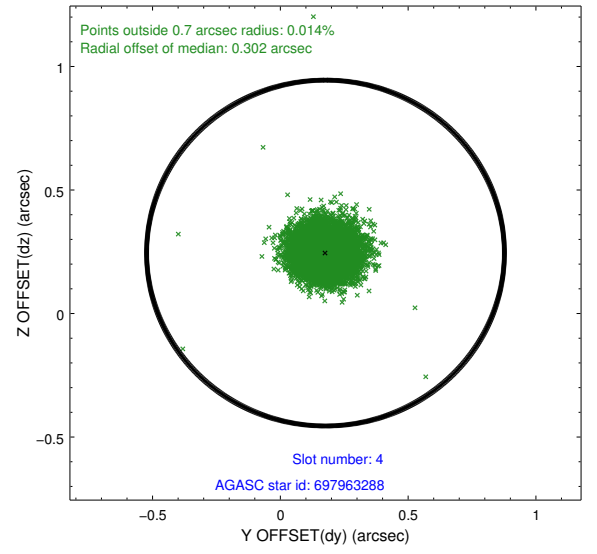
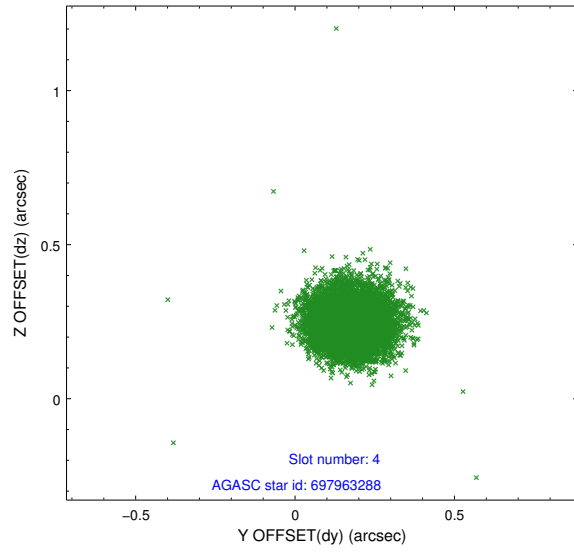
slot	status	id	mag	n_pts	med_dy	med_dz	dr1	dr2	ra	dec	mean_y	mean_z
0	FID	HRC-S-1	7.06	3704	0.011	-0.133	0.006	0.011	0.000000	0.000000	-1169.27	-460.65
1	FID	HRC-S-2	7.03	3704	0.185	-0.103	0.022	0.043	0.000000	0.000000	1230.27	-453.35
2	FID	HRC-S-4	6.98	3701	0.206	-0.069	0.018	0.039	0.000000	0.000000	1229.51	571.40
3	GUIDE	697963056	9.14	7391	-0.101	0.028	0.093	0.149	72.545470	-10.265861	1325.82	1667.45
4	GUIDE	697963288	9.21	7396	0.177	0.245	0.092	0.153	72.359717	-10.592578	2033.37	520.51
5	GUIDE	697970576	8.28	7401	-0.116	-0.028	0.082	0.129	71.548767	-10.222268	-526.32	-1342.87
6	GUIDE	697971944	9.20	7397	0.020	-0.254	0.104	0.174	71.714219	-10.975346	2128.62	-2145.22
7	GUIDE	697973824	7.98	7406	0.019	0.010	0.068	0.110	72.012098	-10.590000	1427.25	-550.93

2.4 Star Slots

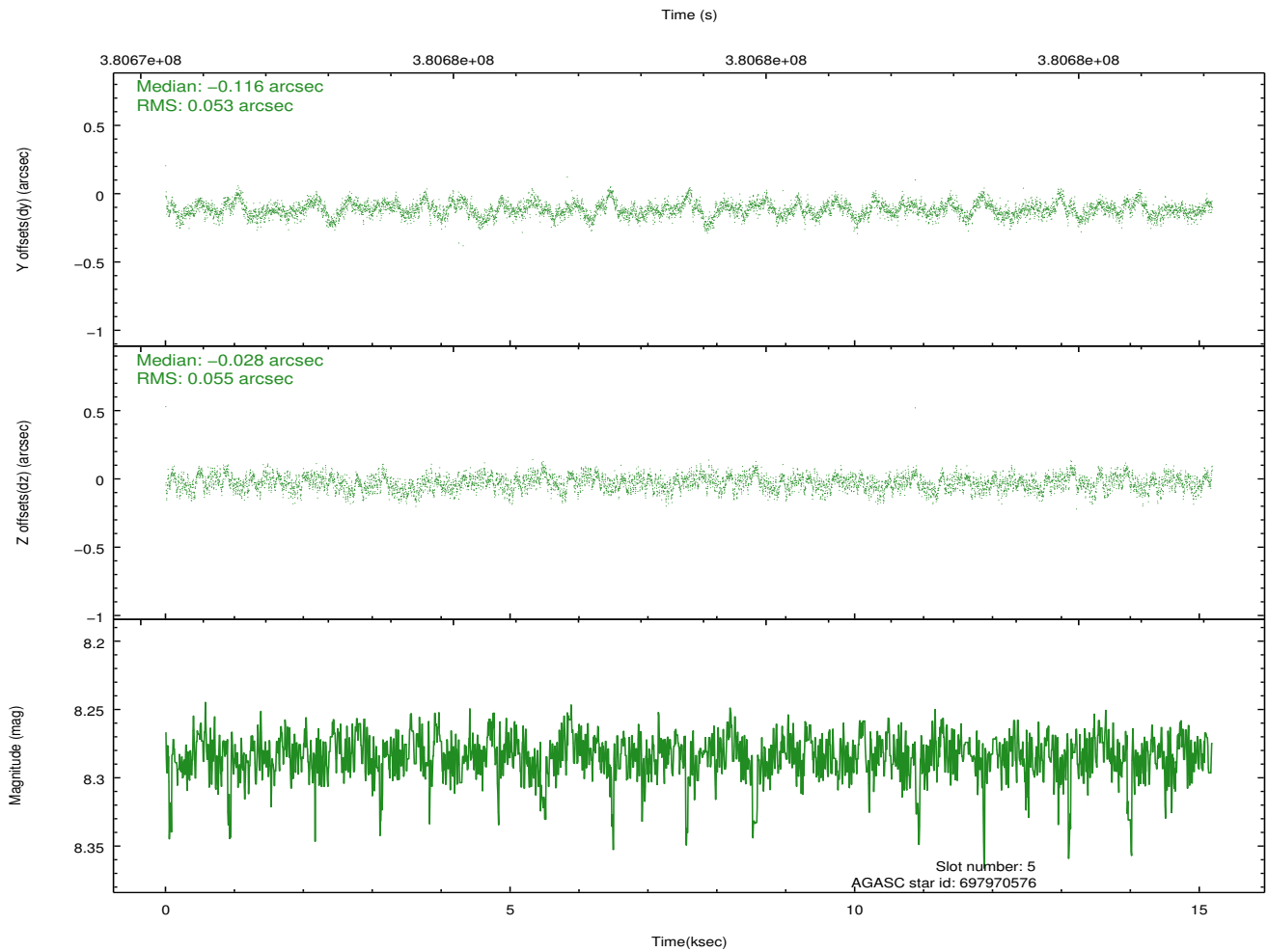
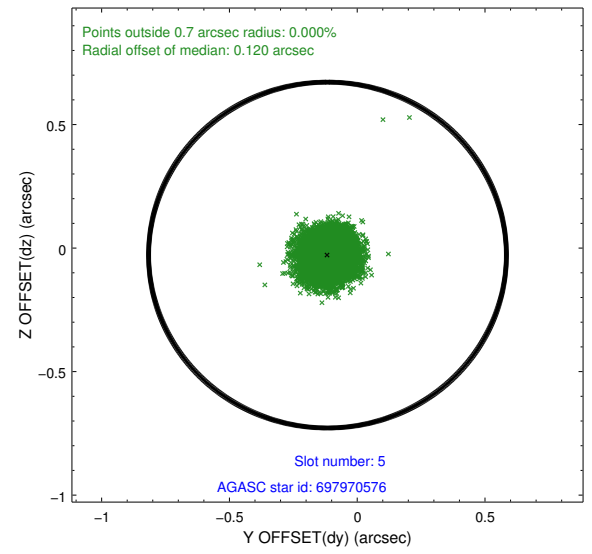
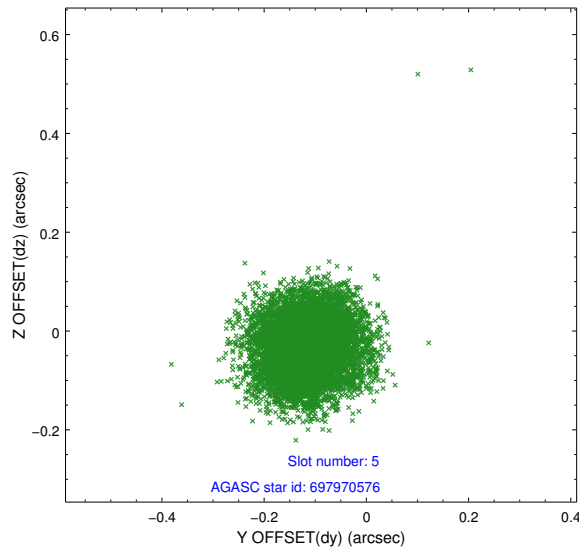
2.4.1 Slot 3



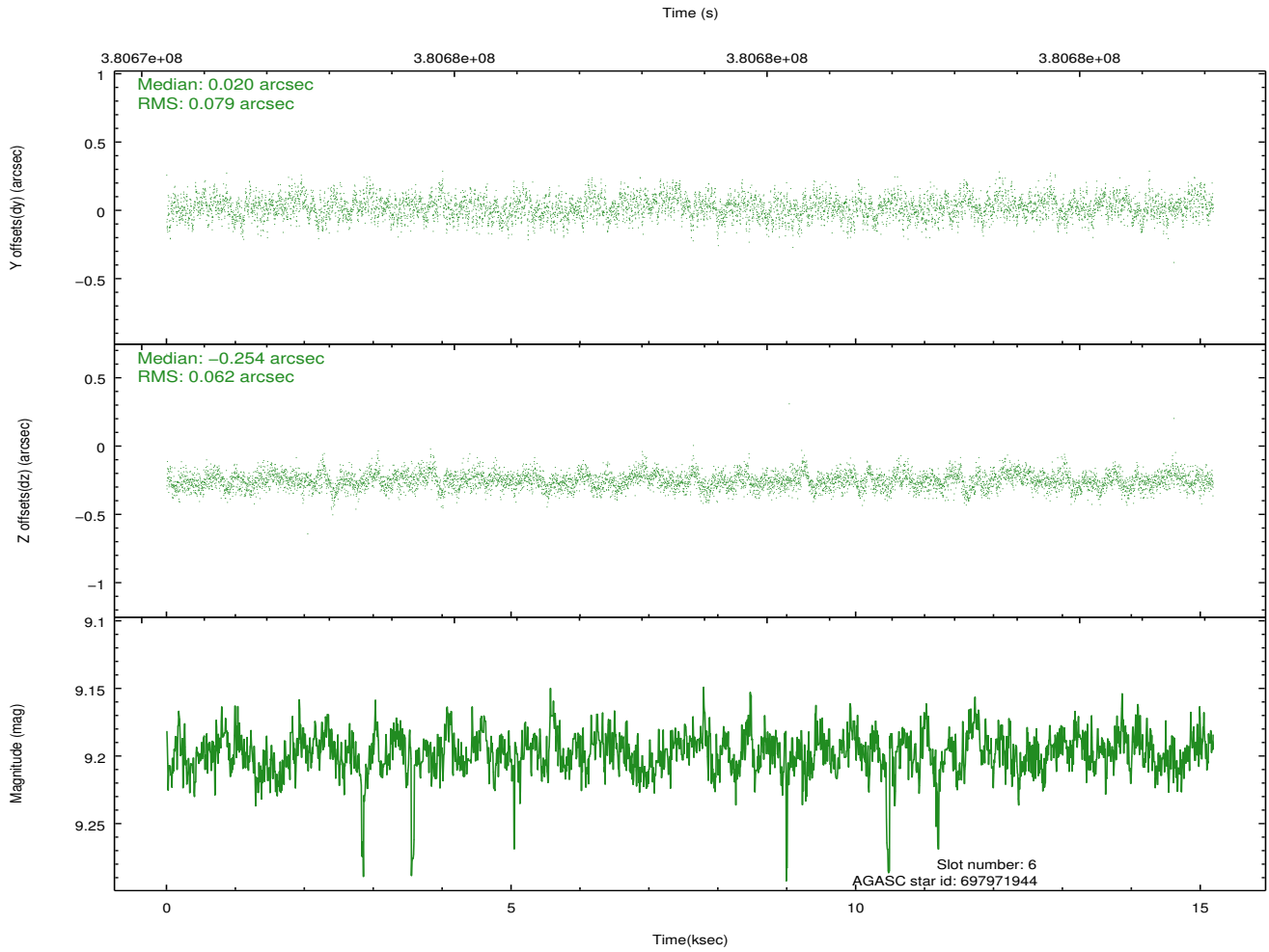
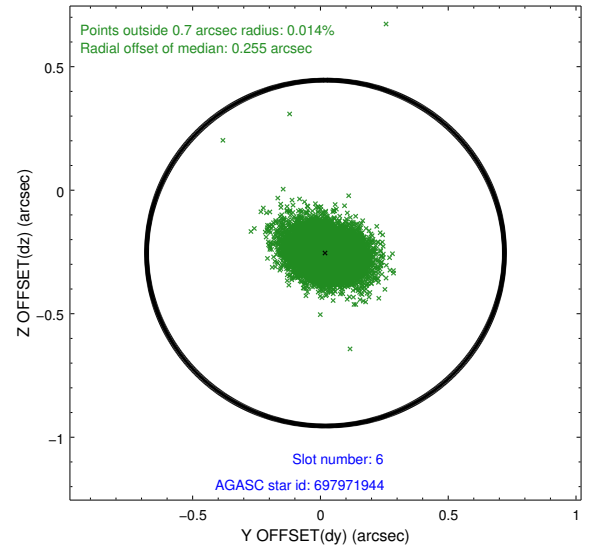
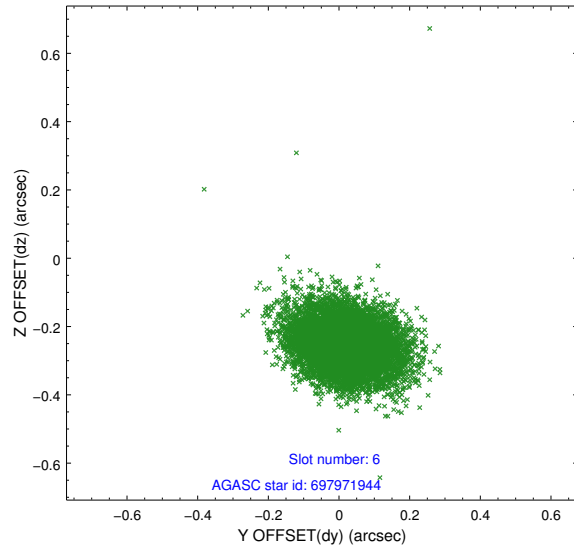
2.4.2 Slot 4



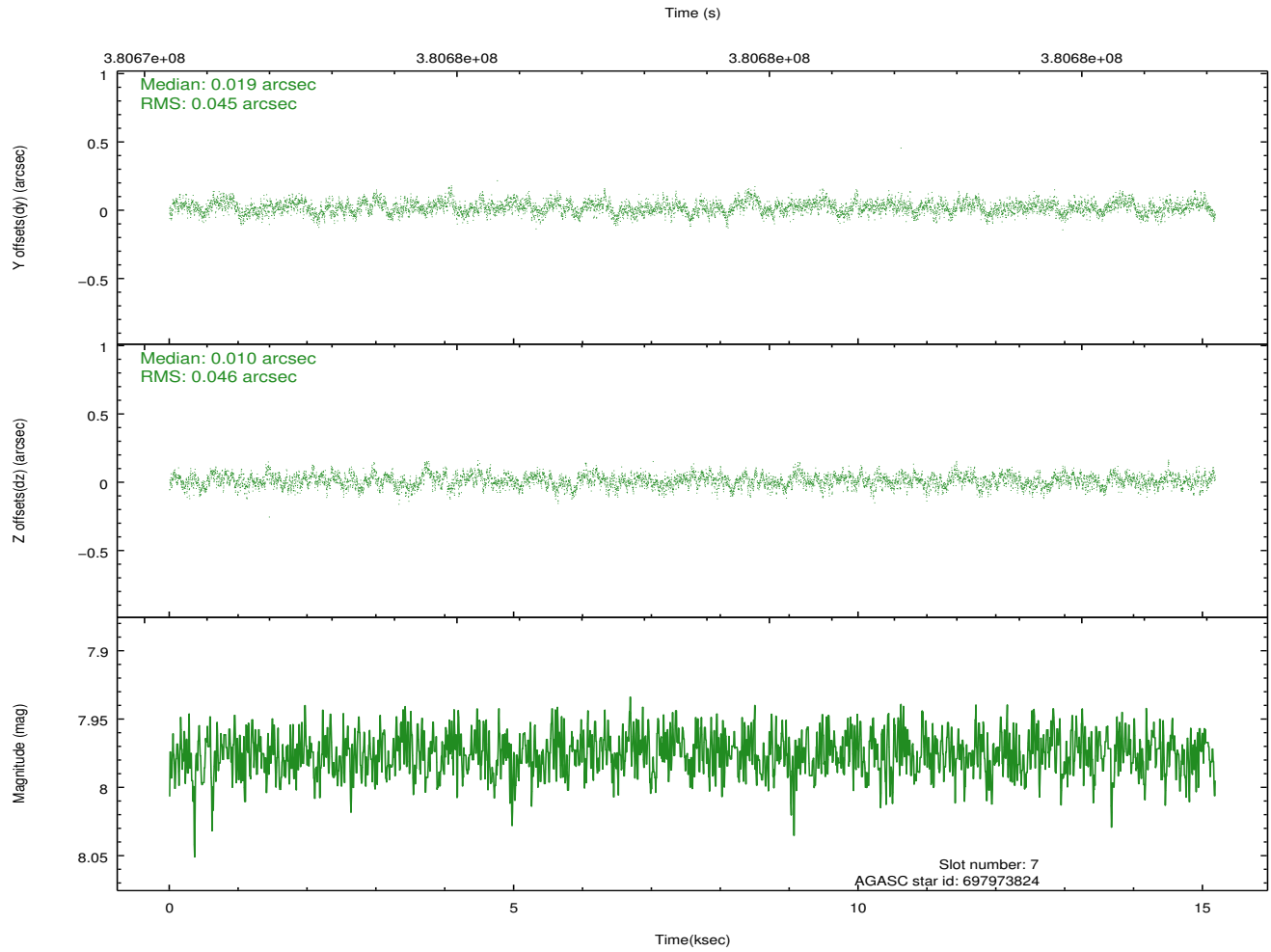
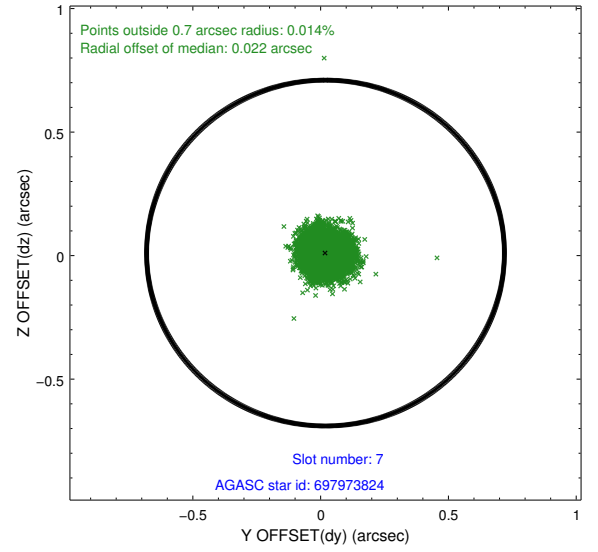
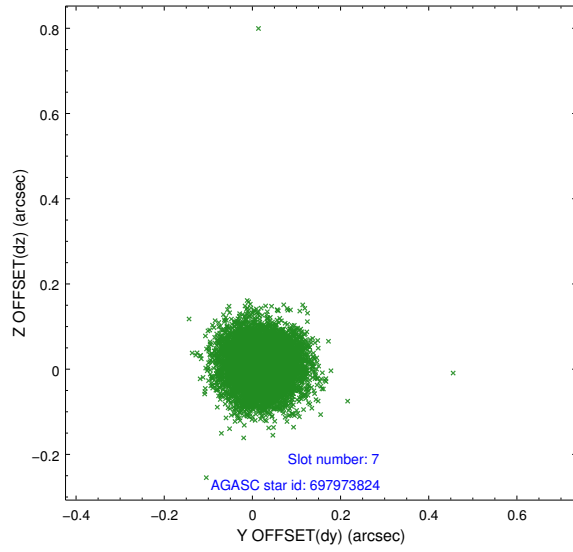
2.4.3 Slot 5



2.4.4 Slot 6

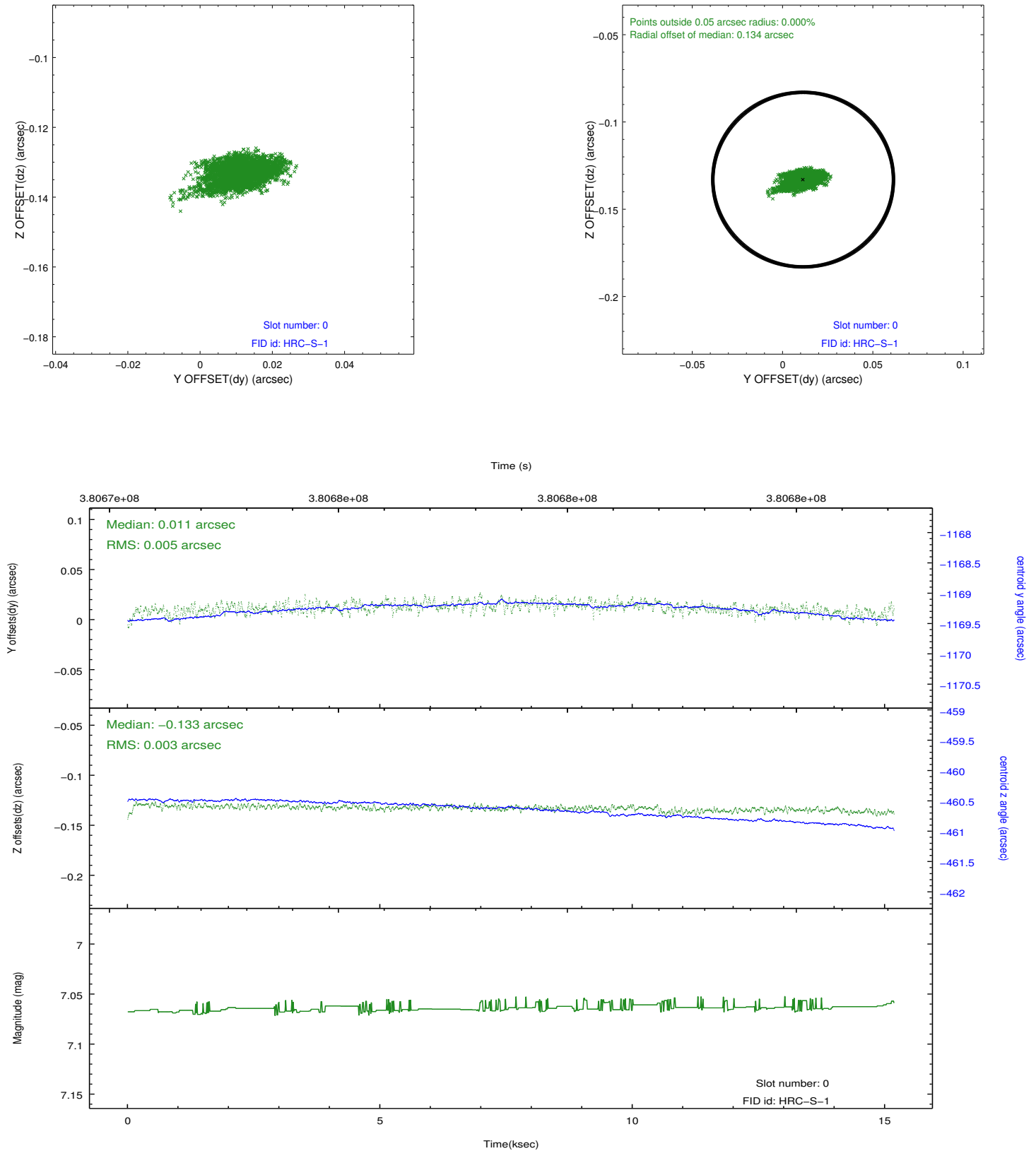


2.4.5 Slot 7

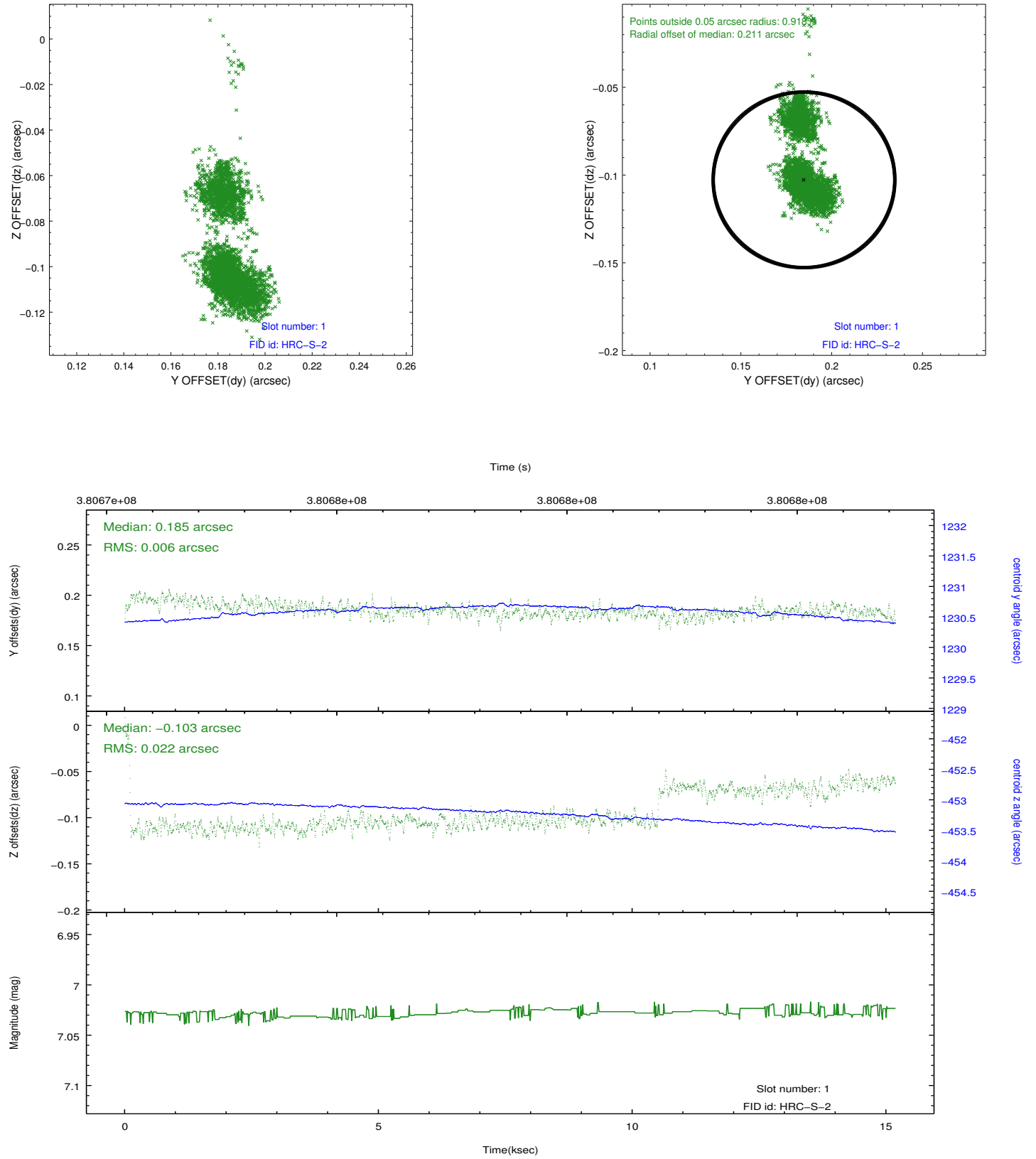


2.5 FID Slots

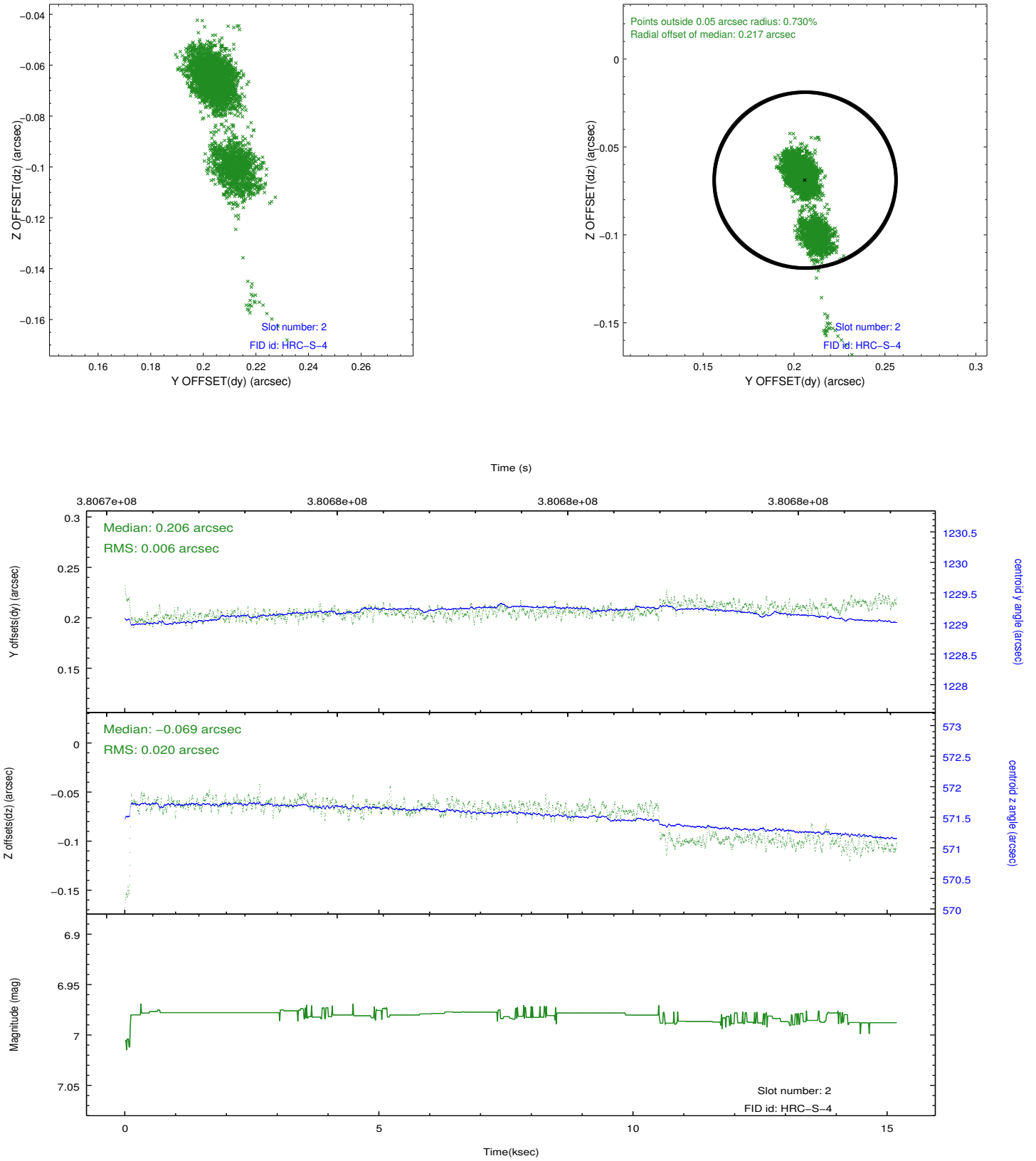
2.5.1 Slot 0



2.5.2 Slot 1

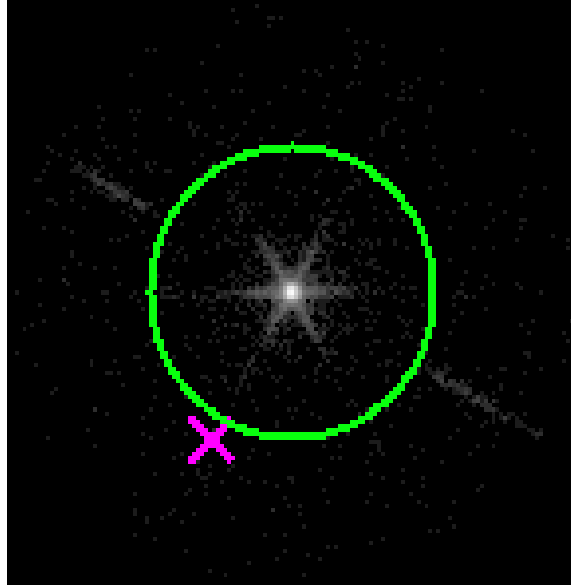


2.5.3 Slot 2

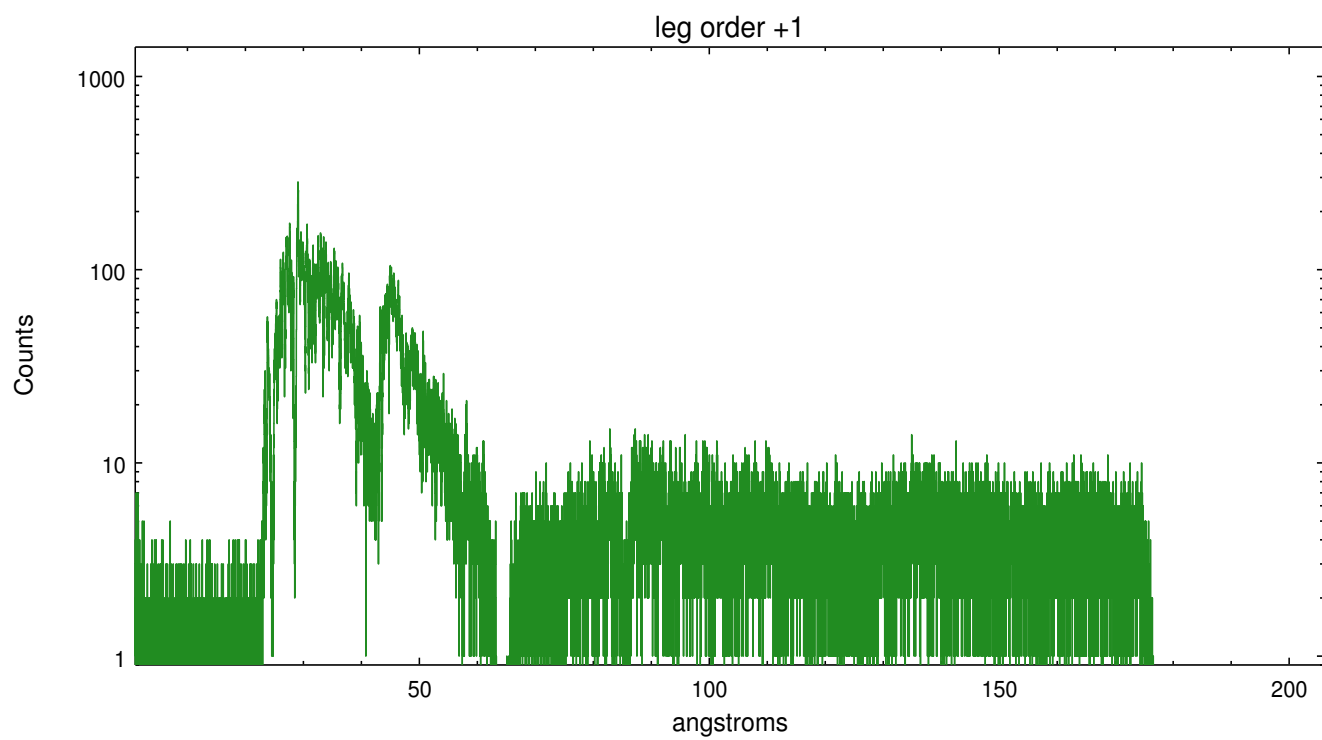
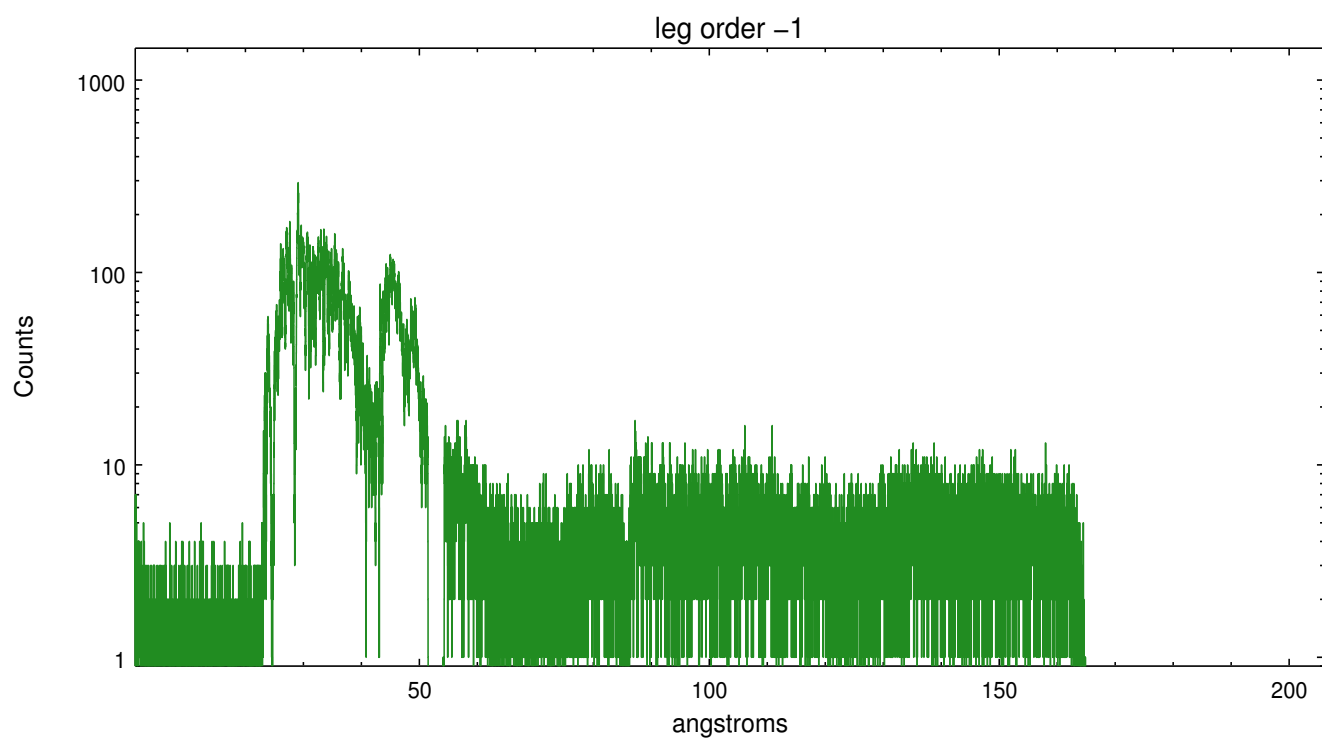


3 Gratings

3.1 LETG Arm



LETG Zero Order



A Summary

A.1 Status

V&V Scientist	Joy Nichols
V&V Date (YYYY-MM-DD)	2012.07.02
V&V Edition	1
V&V Disposition and Status	OK
V&V Charge Time	15.183582

A.2 Comments