

V&V Reference Report

L2 ASCDS Version : 8.4.5

Observation 11237 - L2 Version 2
Chandra X-Ray Center

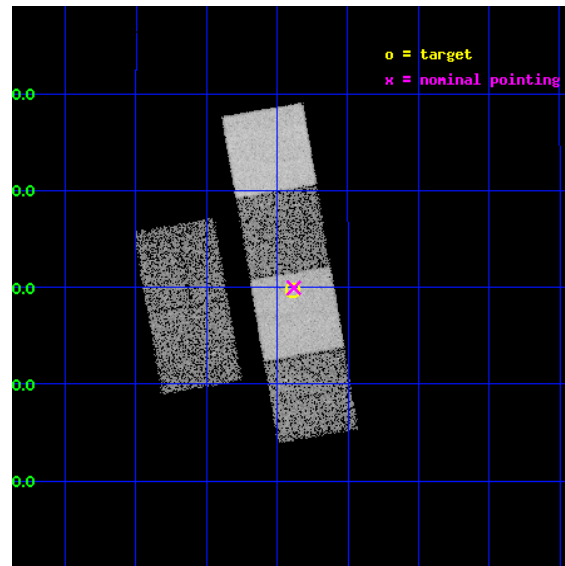
L2 Processing Date : Jul 7 2012

Contents

1	Front	2
2	OBI	3
2.1	OBI	3
2.1.1	Images	3
2.1.2	Bias	3
2.1.3	Parameters	4
2.1.4	Events	4
2.2	Compared Parameters	5
2.3	Aspect	6
2.4	Star Slots	9
2.4.1	Slot 3	9
2.4.2	Slot 4	10
2.4.3	Slot 5	11
2.4.4	Slot 6	12
2.4.5	Slot 7	13
2.5	FID Slots	14
2.5.1	Slot 0	14
2.5.2	Slot 1	15
2.5.3	Slot 2	16
A	Summary	17
A.1	Status	17
A.2	Comments	17

1 Front

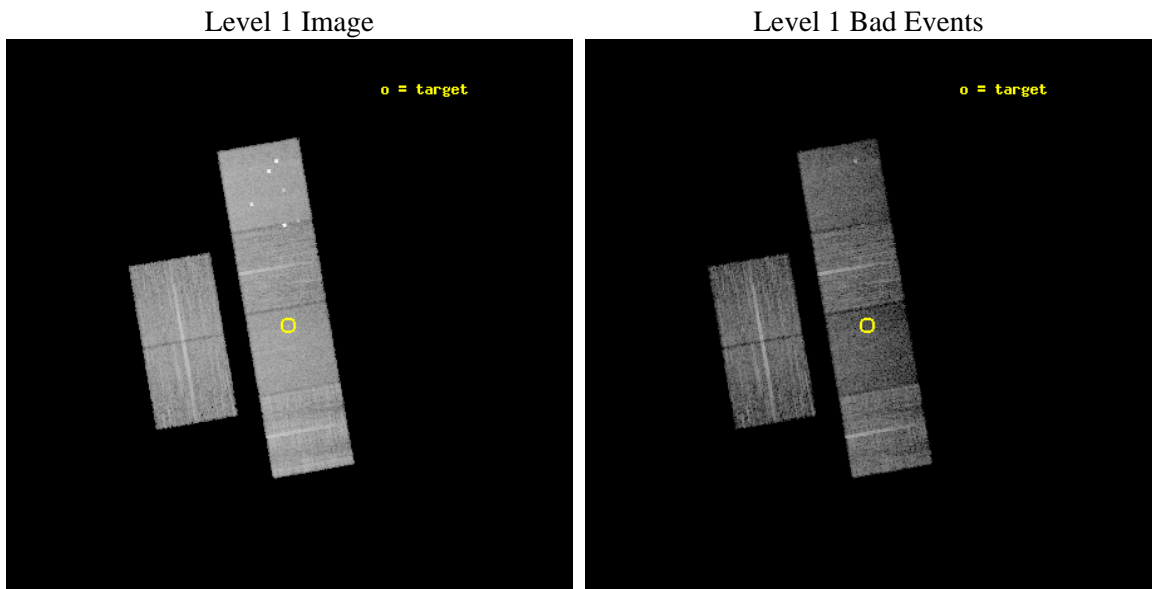
seq_num	501322	Sequence number
obs_id	11237	Observation id
title	Chandra Observations of New X-ray Supernovae	Proposal title
observer	Prof. David Pooley	Principal investigator
object	SN 2010jl	Source name
dtcycle	0	
cycle	P	events from which exps? Prim/Second/Both
ra_targ	145.722208	Observer's specified target RA [deg]
dec_targ	9.494944	Observer's specified target Dec [deg]
ra_nom	145.7204278912	Nominal RA [deg]
dec_nom	9.4994471974641	Nominal Dec [deg]
roll_nom	80.156958637127	Nominal Roll [deg]
revision	2	Processing version of data
ontime	10049.898643672	Sum of GTIs [s]
livetime	9922.6407757238	Livetime [s]
ontime2	10049.939683676	Sum of GTIs [s]
ontime3	10046.534513414	Sum of GTIs [s]
ontime5	10049.857603669	Sum of GTIs [s]
ontime6	10049.816563666	Sum of GTIs [s]
ontime7	10049.898643672	Sum of GTIs [s]
ontime8	10049.734483659	Sum of GTIs [s]
l2events	103290	Number of level 2 events



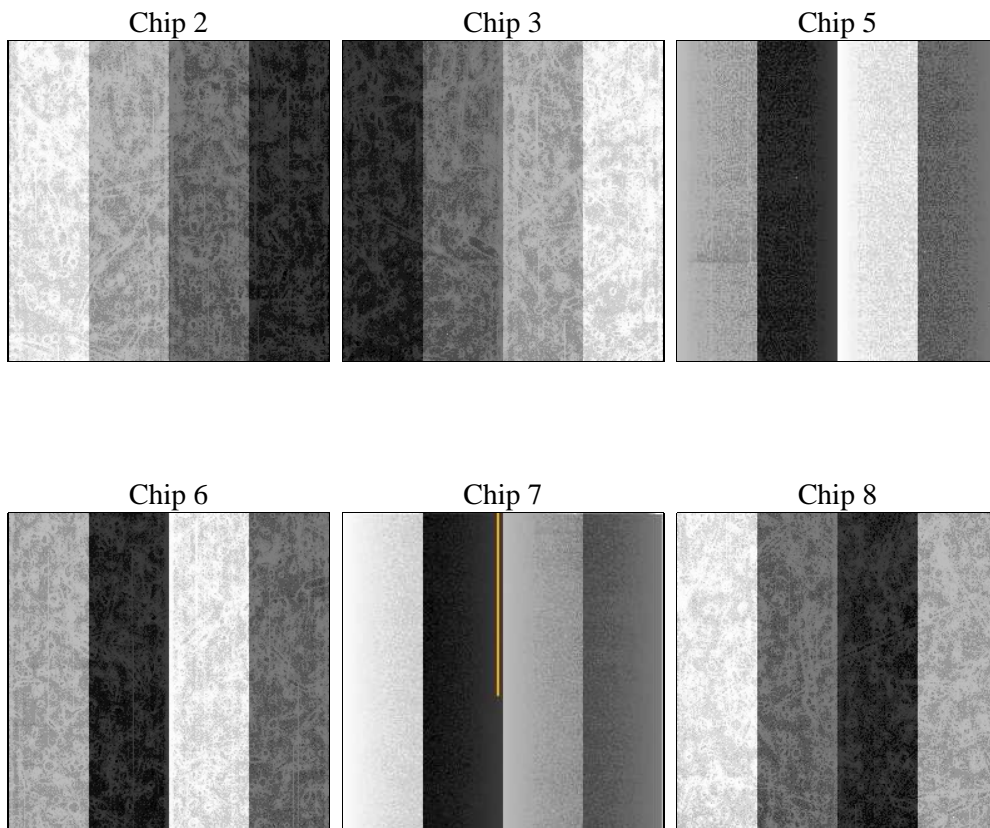
2 OBI

2.1 OBI

2.1.1 Images



2.1.2 Bias



2.1.3 Parameters

obi_num	0	Obi number	sched_exp_time	10000.000000	[s] Scheduled observation exposure time
ascdsver	8.4.5	Processing system revision	ontime	10049.898643672	Sum of GTIs [s]
caldsver	4.5.0	 	ontime2	10049.939683676	Sum of GTIs [s]
date	2012-07-07T03:16:56	Date and time of file creation	ontime3	10046.534513414	Sum of GTIs [s]
revision	2	Processing version of data	ontime5	10049.857603669	Sum of GTIs [s]
			ontime6	10049.816563666	Sum of GTIs [s]
			ontime7	10049.898643672	Sum of GTIs [s]
			ontime8	10049.734483659	Sum of GTIs [s]
			l1events	447543	Number of level 1 events

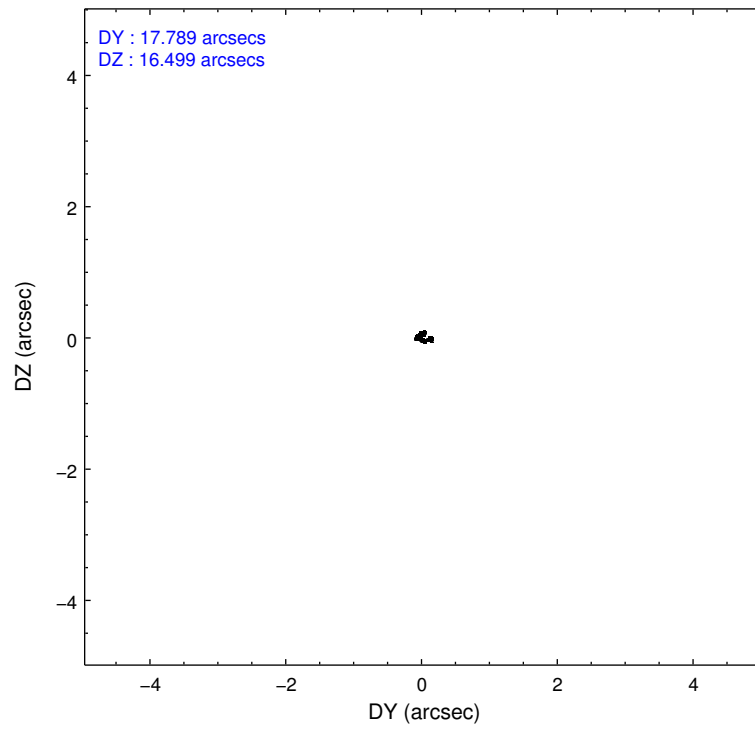
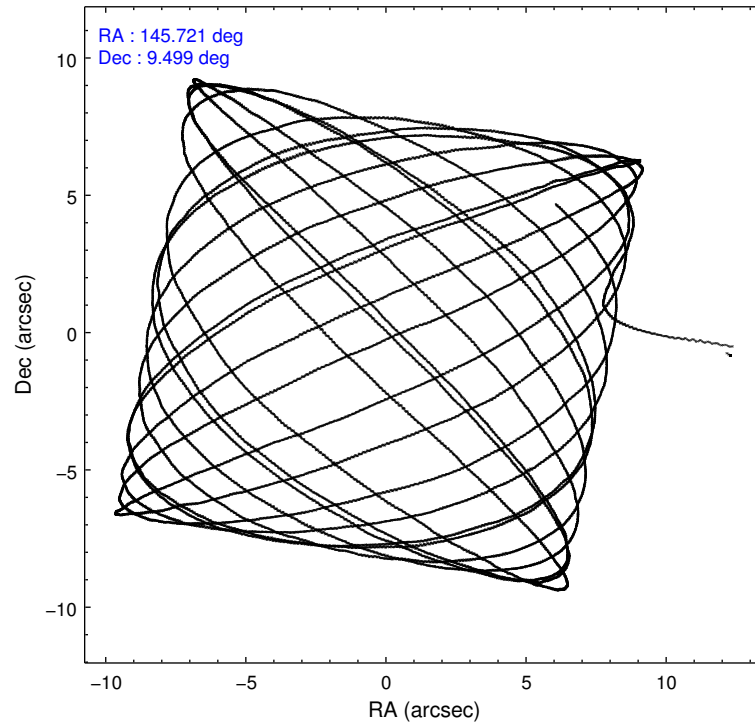
2.1.4 Events

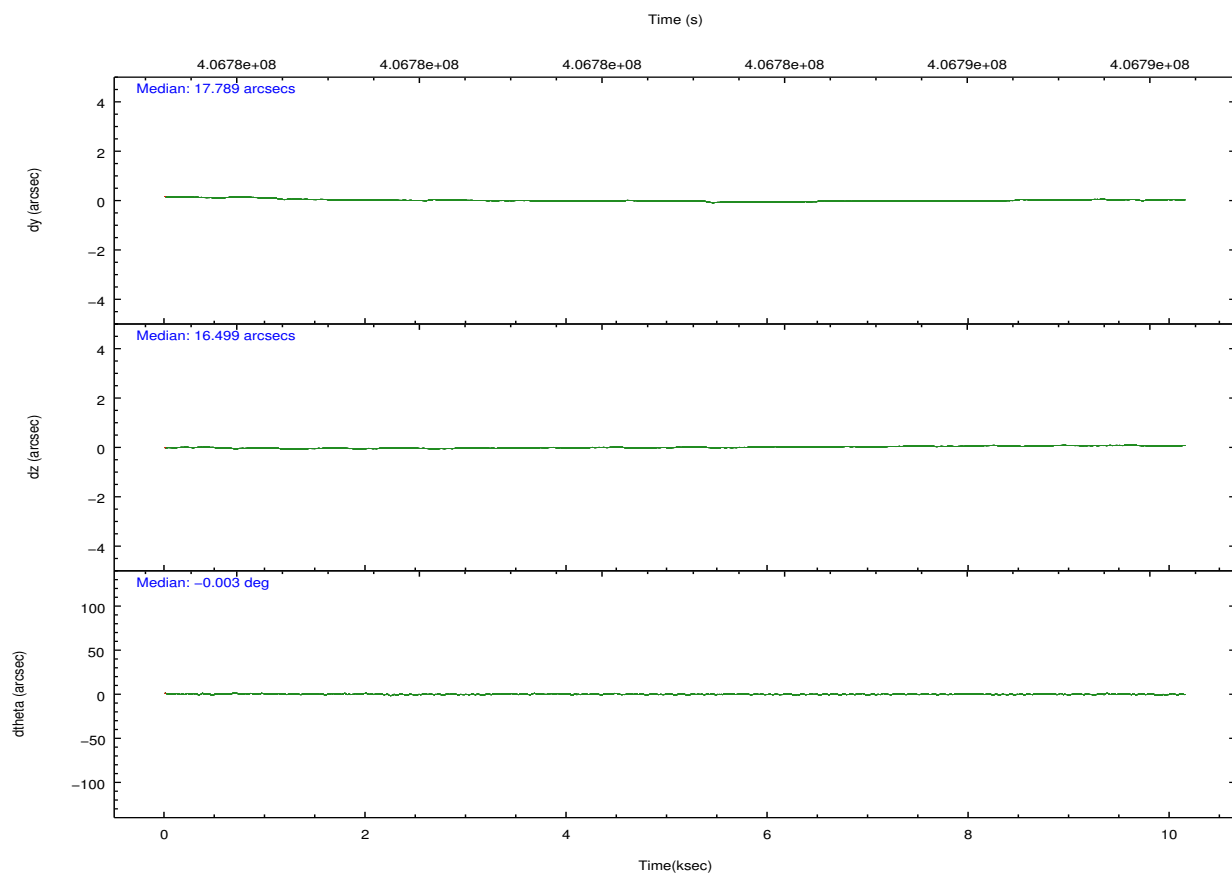
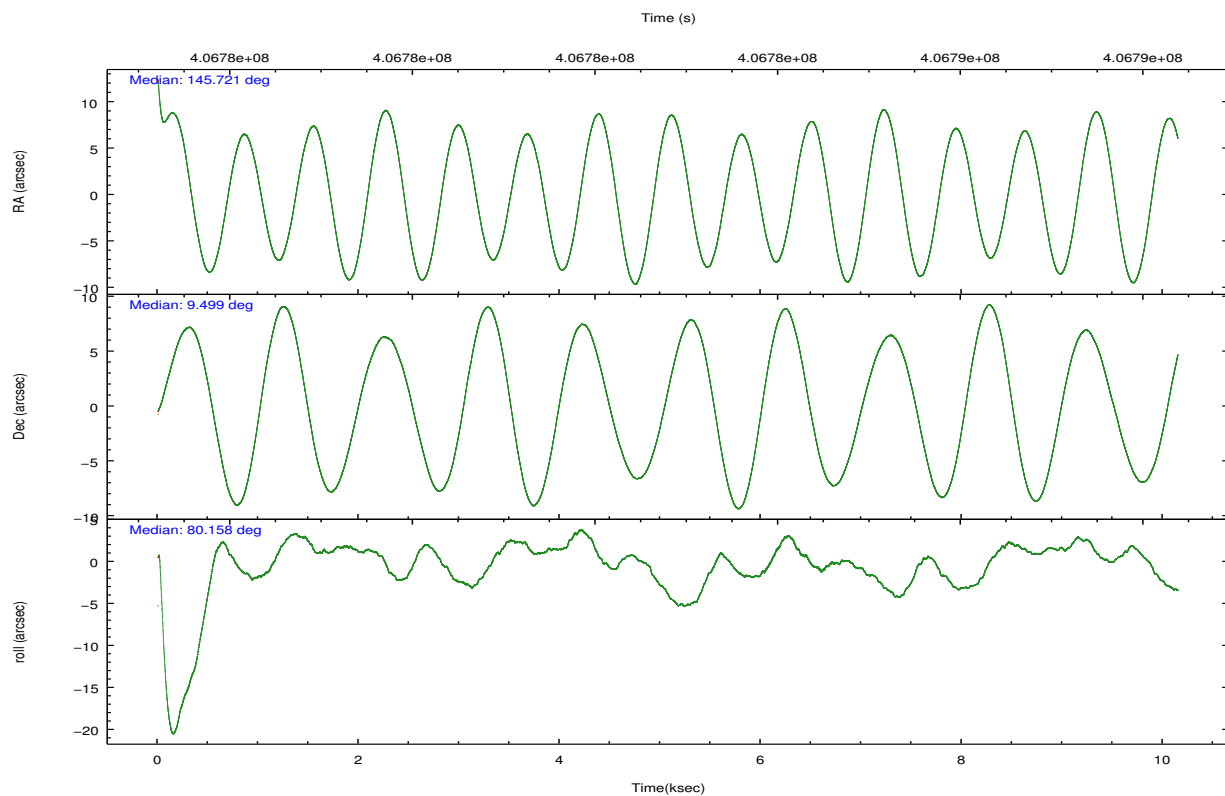
	ccd 2	ccd 3	ccd 5	ccd 6	ccd 7	ccd 8		ccd 2	ccd 3	ccd 5	ccd 6	ccd 7	ccd 8
level 1 events	64974	62695	97240	68708	70710	83216	grade 0 events	2611	2352	9434	2746	3470	6704
rejected events	57985	56129	44025	58397	36317	60052		4%	3%	9%	3%	4%	8%
rejected %	89%	89%	45%	84%	51%	72%	grade 1 events	55	39	310	28	126	63
								0%	0%	0%	0%	0%	0%
							grade 2 events	1750	1477	15511	4588	7351	5510
								2%	2%	15%	6%	10%	6%
							grade 3 events	706	738	1875	760	3177	2623
								1%	1%	1%	1%	4%	3%
							grade 4 events	713	661	1927	748	3152	2346
								1%	1%	1%	1%	4%	2%
							grade 5 events	2337	2573	7209	2601	7487	3894
								3%	4%	7%	3%	10%	4%
							grade 6 events	1213	1340	24481	1470	17258	5991
								1%	2%	25%	2%	24%	7%
							grade 7 events	55589	53515	36493	55767	28689	56085
								85%	85%	37%	81%	40%	67%

2.2 Compared Parameters

Parameter	Planned	Actual	Parameter	Planned	Actual
Instrument	ACIS	ACIS	Obspar format version number	7	7
Detector	ACIS-235678	ACIS-235678	Obspar file type	PREDICTED	ACTUAL
Grating	NONE	NONE	Obspar update status	NONE	UPDATED
Data mode	VFAINT	VFAINT	CCD I0 on	N	N
Observation mode	POINTING	POINTING	CCD I1 on	N	N
[deg] Pointing RA	145.730285	145.7204278911967	CCD I2 on	O1	Y
[deg] Pointing Dec	9.473913	9.499447197464145	CCD I3 on	O2	Y
[deg] Pointing Roll	79.998671	80.15695863712699	CCD S0 on	N	N
[mm] SIM focus pos	-0.684267	-0.6828225247311905	CCD S1 on	Y	Y
[mm] SIM defocus	0	0.001444936568705701	CCD S2 on	Y	Y
[mm] SIM translation stage pos	-190.132523	-190.1400660498719	CCD S3 on	Y	Y
[mm] SIM translation stage offset	0	0.00754346686406393	CCD S4 on	Y	Y
[s] Observation start time (MET)	406777885.184000	406776742.34459	CCD S5 on	N	N
Observation start date	2010-11-22T01:50:19	2010-11-22T01:32:22	Number of optional ACIS chips dropped	0	0
[s] Observation end time (MET)	406787885.184000	406788780.97021	On-chip summing requested	N	N
Observation end date	2010-11-22T04:36:59	2010-11-22T04:53:00	Subarray requested	NONE	NONE
Read mode	TIMED	TIMED	Alternating exposures requested	N	N
			[s] Primary exposure time	0.000000	3.2

2.3 Aspect



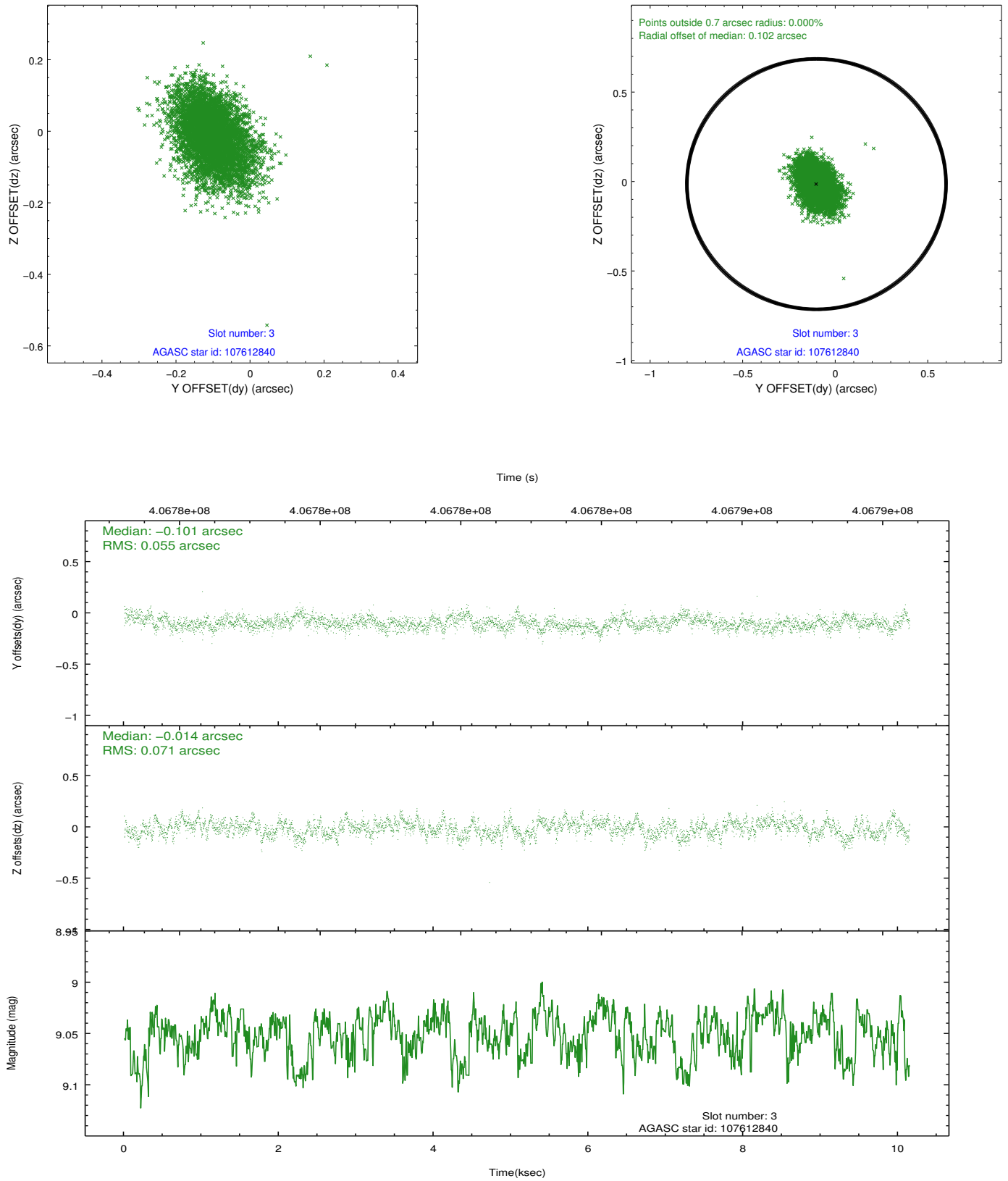


Slot Statistics

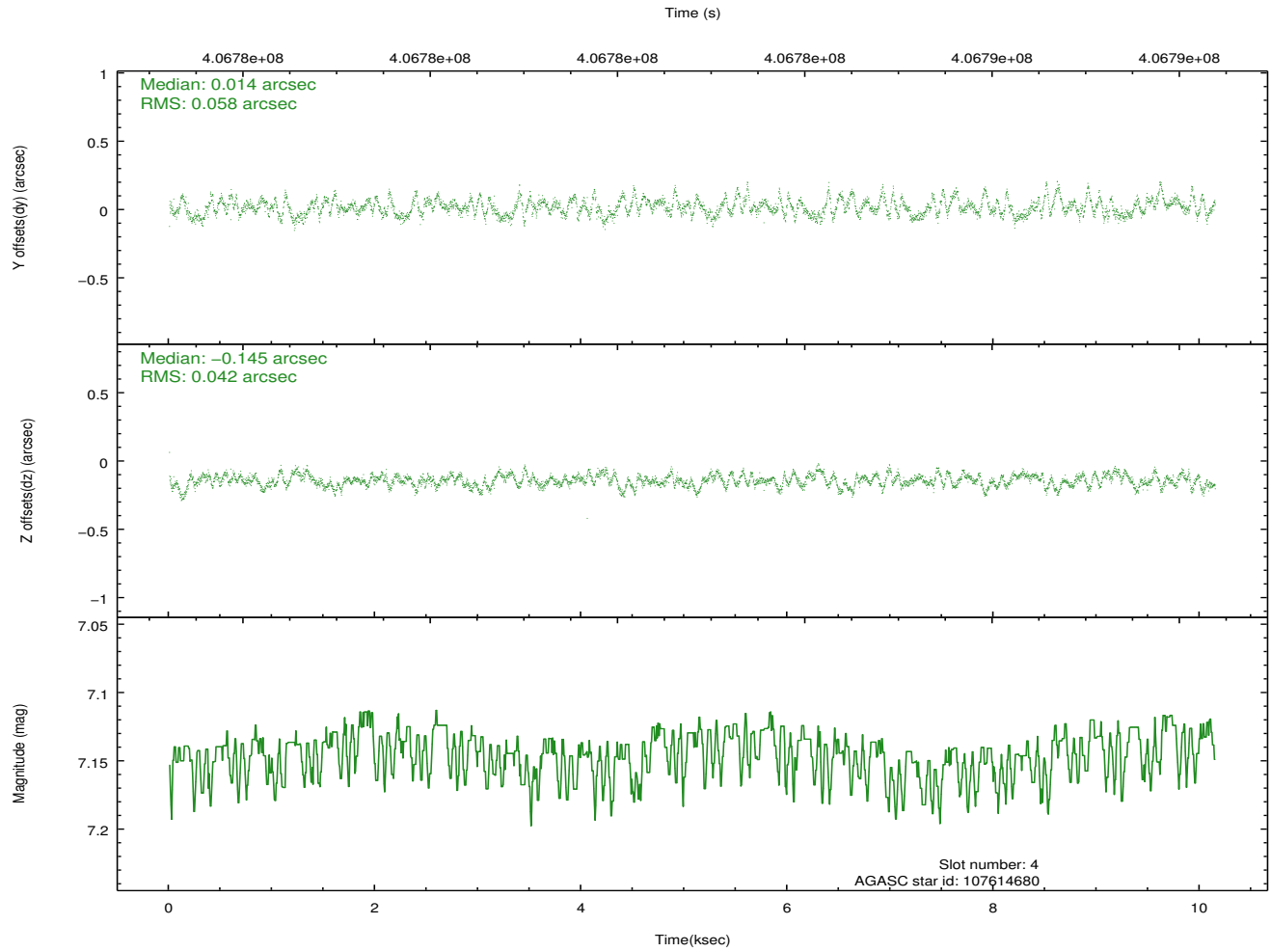
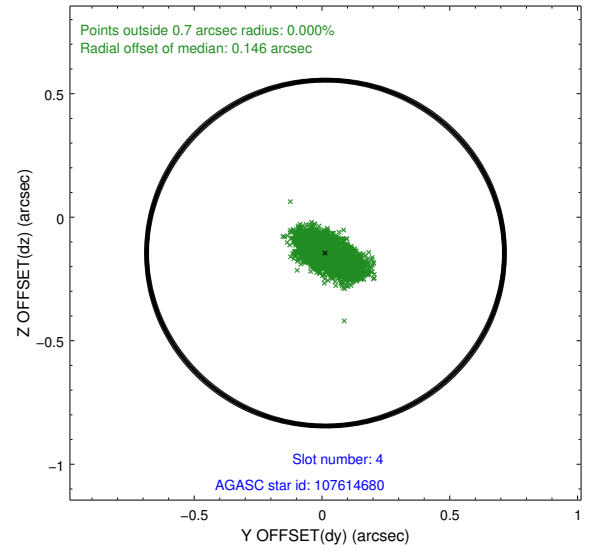
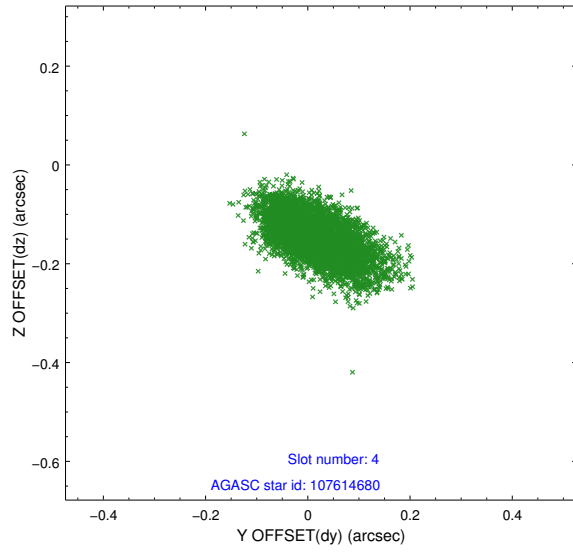
slot	status	id	mag	n_pts	med_dy	med_dz	dr1	dr2	ra	dec	mean_y	mean_z
0	FID	ACIS-S-2	6.89	2475	-0.092	-0.059	0.006	0.012	0.000000	0.000000	-770.97	-1737.97
1	FID	ACIS-S-4	6.96	2475	0.152	0.027	0.007	0.011	0.000000	0.000000	2142.35	170.00
2	FID	ACIS-S-6	7.10	2475	-0.088	0.039	0.007	0.012	0.000000	0.000000	391.73	808.04
3	GUIDE	107612840	9.05	4947	-0.101	-0.014	0.094	0.157	145.374441	9.465044	-250.46	1239.43
4	GUIDE	107614680	7.15	4950	0.014	-0.145	0.075	0.130	145.310964	8.995416	-1955.08	1169.97
5	GUIDE	107617024	8.33	4948	-0.239	-0.313	0.066	0.105	145.130994	9.426697	-535.87	2067.04
6	GUIDE	108535368	9.43	4947	0.109	-0.054	0.116	0.184	145.589122	8.980598	-1836.05	186.65
7	GUIDE	108531080	8.75	4947	0.210	0.527	0.074	0.123	145.751319	8.809136	-2344.03	-488.41

2.4 Star Slots

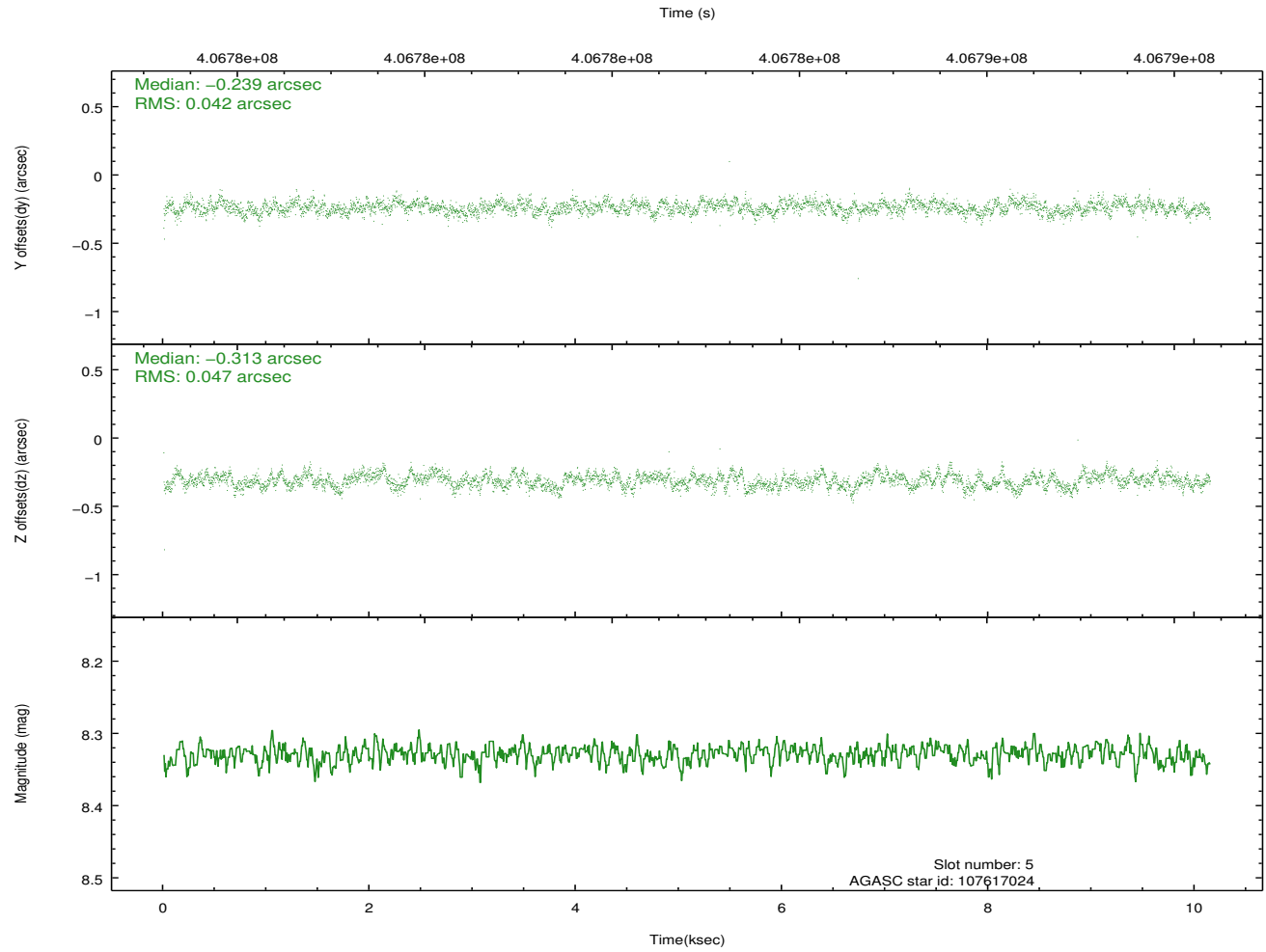
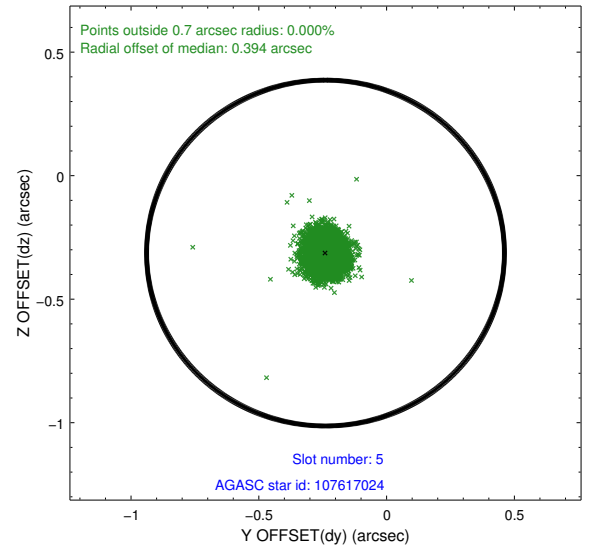
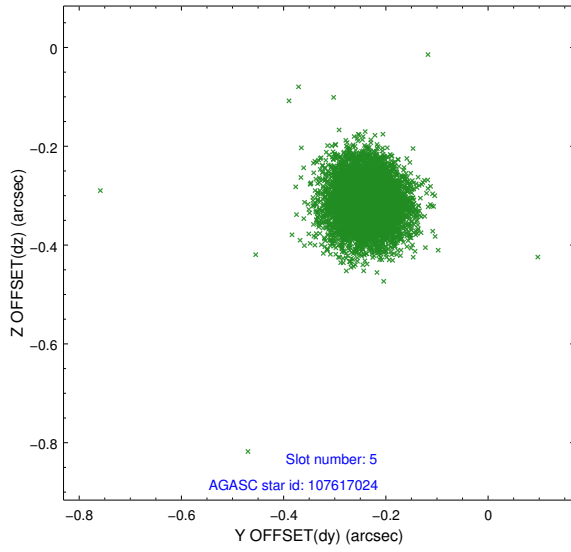
2.4.1 Slot 3



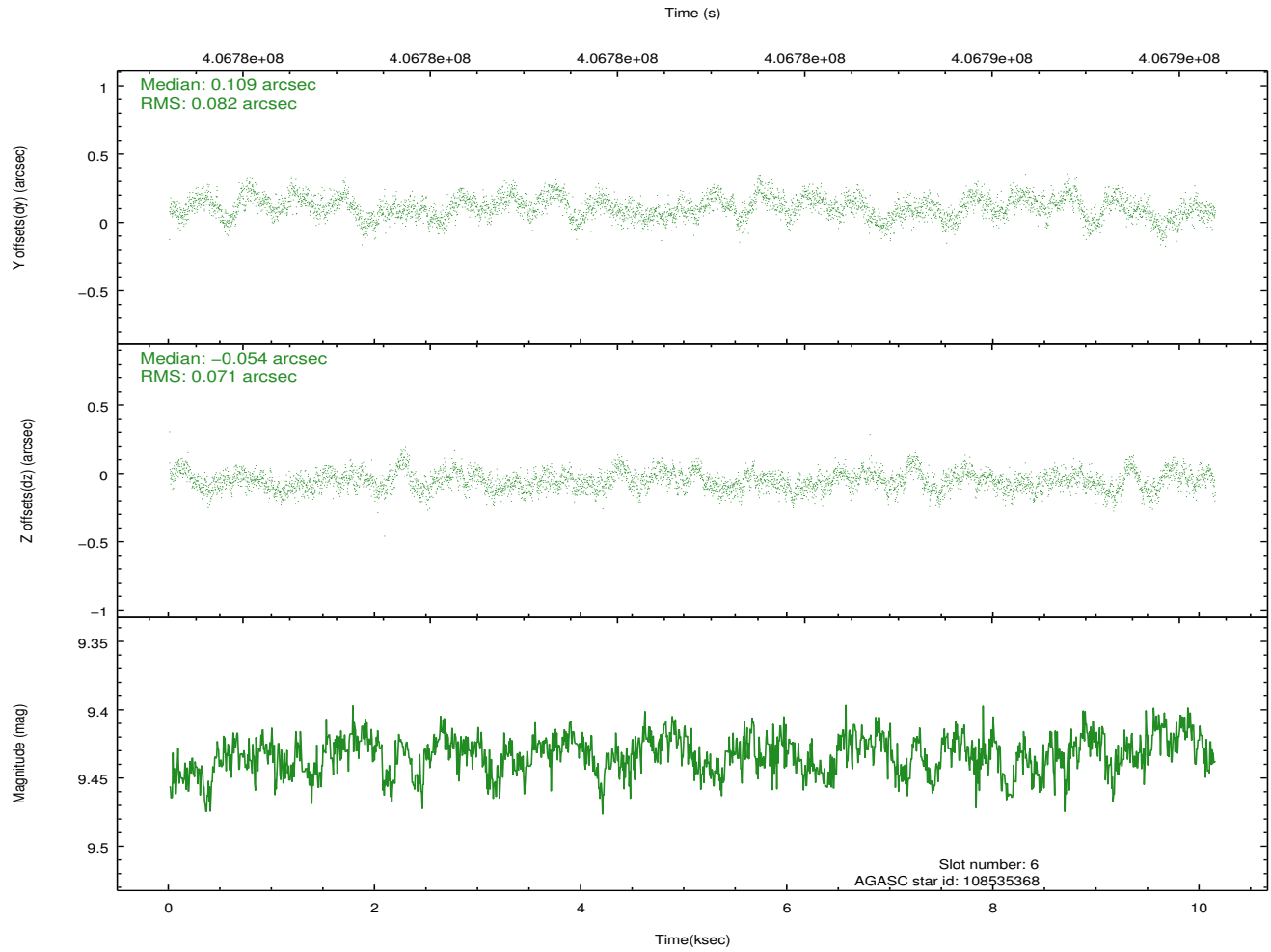
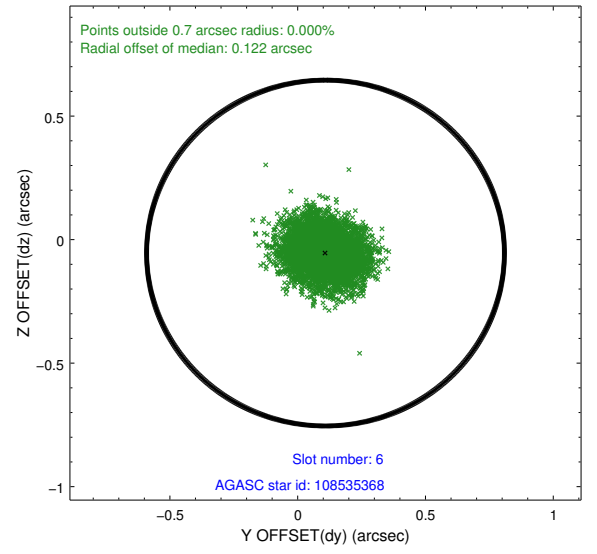
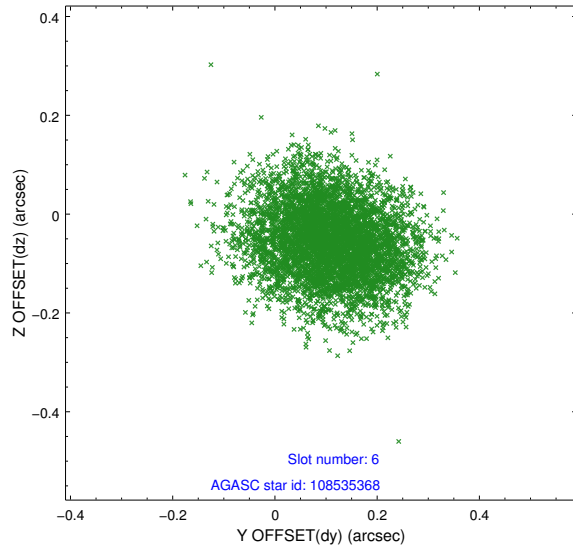
2.4.2 Slot 4



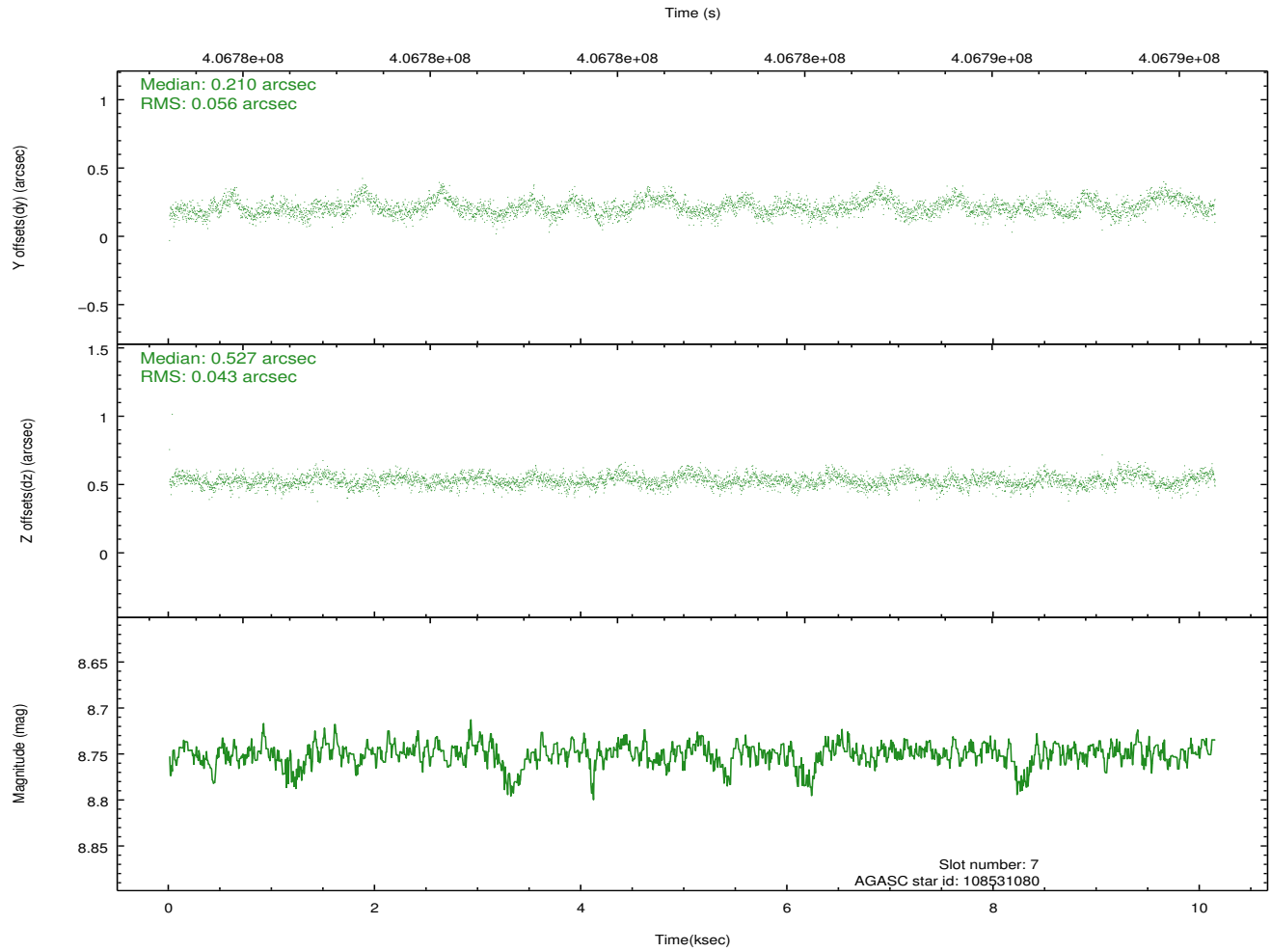
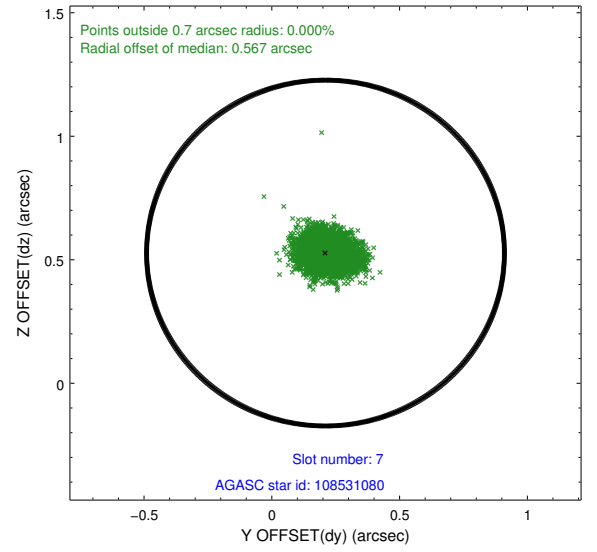
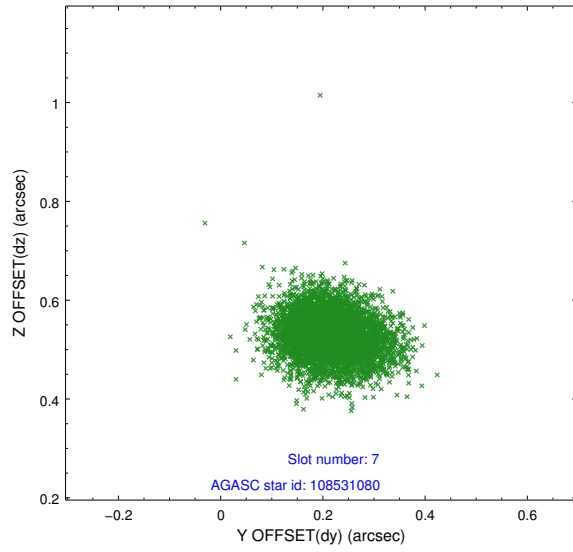
2.4.3 Slot 5



2.4.4 Slot 6

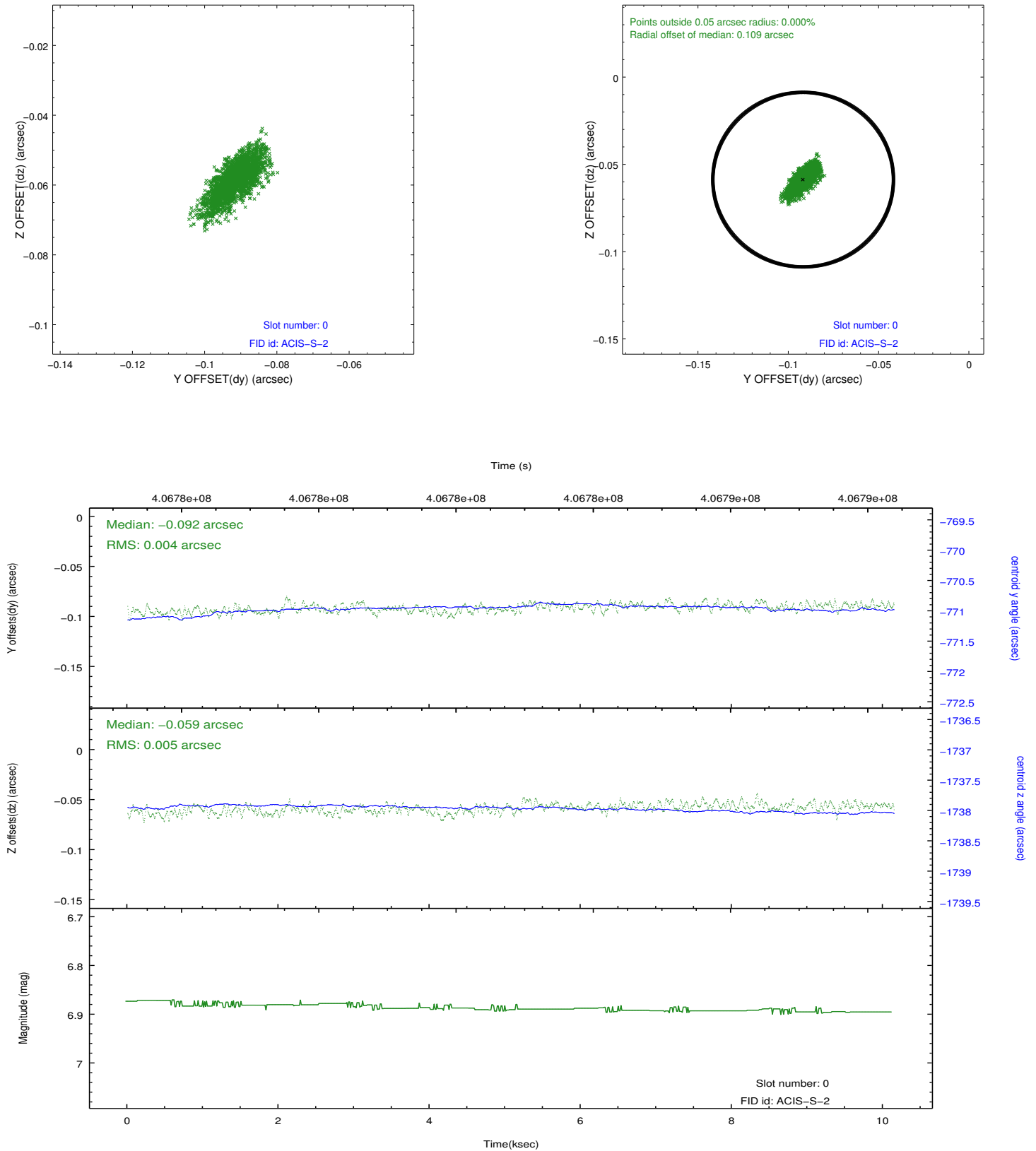


2.4.5 Slot 7

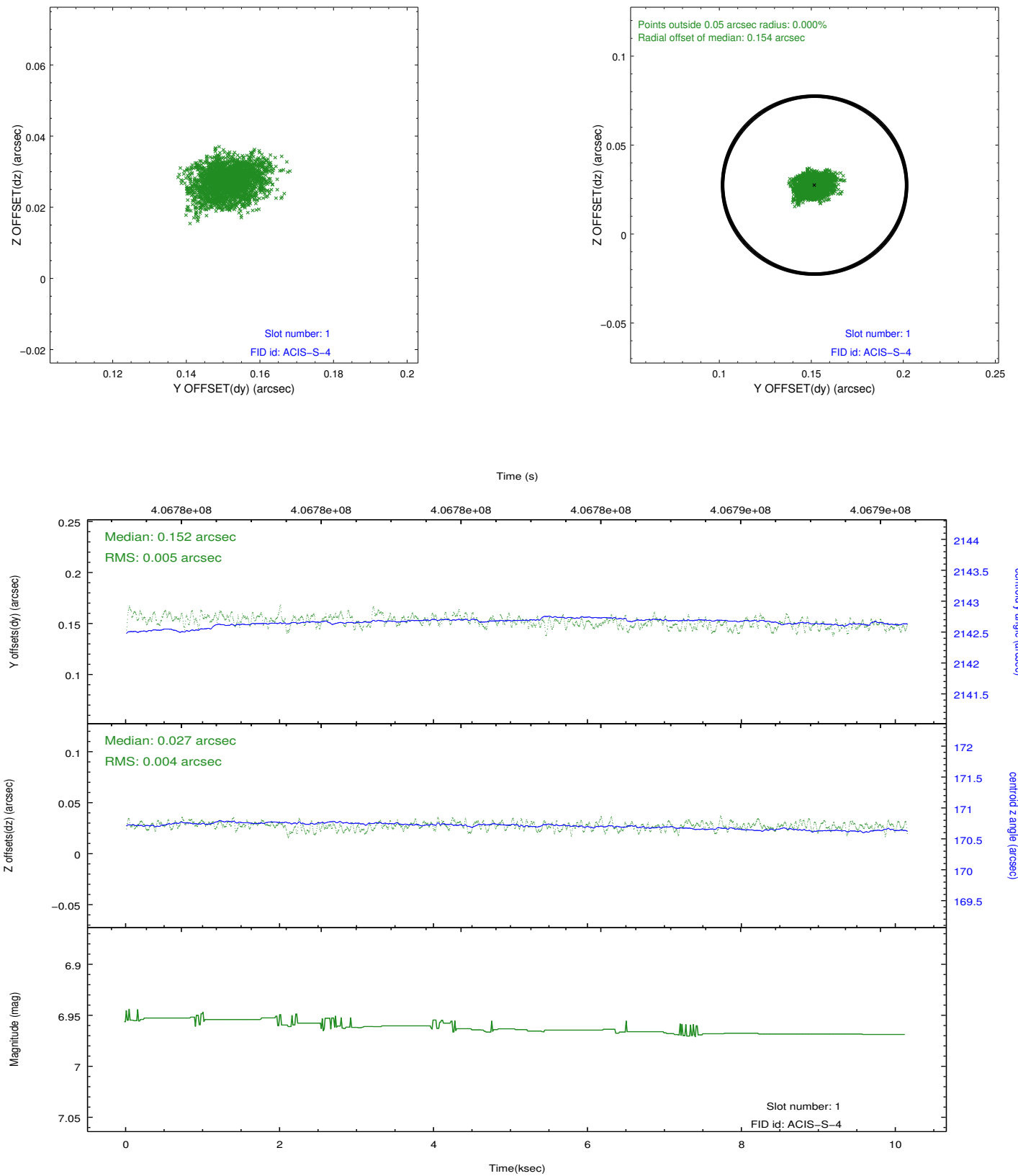


2.5 FID Slots

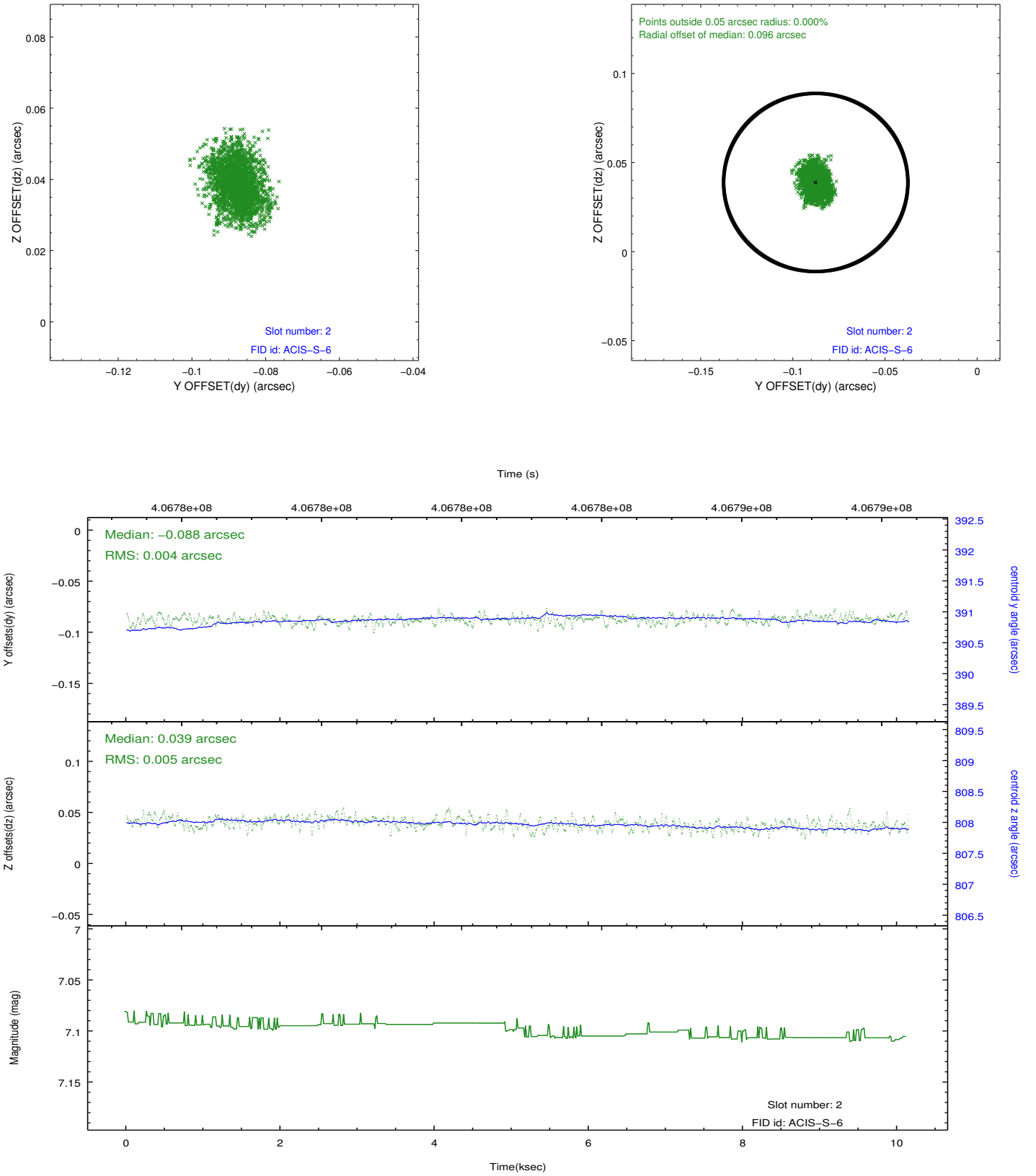
2.5.1 Slot 0



2.5.2 Slot 1



2.5.3 Slot 2



A Summary

A.1 Status

V&V Scientist	Jen Lauer
V&V Date (YYYY-MM-DD)	2012.07.16
V&V Edition	1
V&V Disposition and Status	OK
V&V Charge Time	10.049898643136

A.2 Comments