

V&V Reference Report

L2 ASCDS Version : 8.1.2

Observation 1097 - L2 Version 5

Chandra X-Ray Center

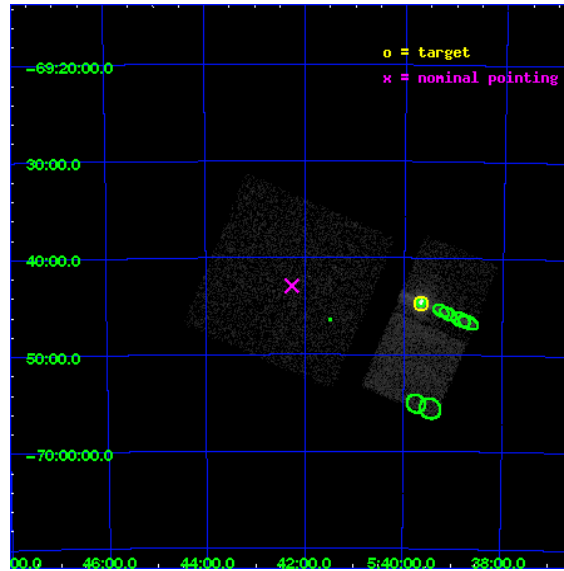
L2 Processing Date : Dec 17 2009

Contents

1	Front	2
2	OBI	3
2.1	OBI	3
2.1.1	Images	3
2.1.2	Bias	3
2.1.3	Parameters	4
2.1.4	Events	4
2.2	Compared Parameters	5
2.3	Aspect	6
2.4	Star Slots	9
2.4.1	Slot 3	9
2.4.2	Slot 4	10
2.4.3	Slot 5	11
2.4.4	Slot 6	12
2.5	FID Slots	13
2.5.1	Slot 0	13
2.5.2	Slot 1	14
2.5.3	Slot 2	15
3	Point Sources	16
A	Summary	17
A.1	Status	17
A.2	Comments	17

1 Front

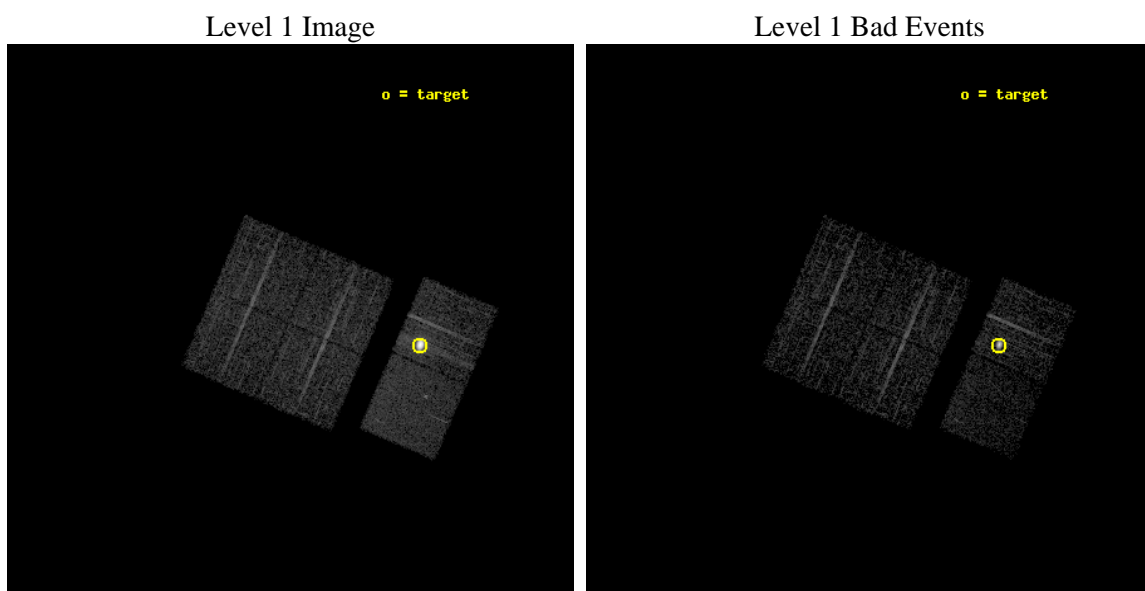
seq_num	480047	Sequence number
obs_id	1097	Observation id
title	 	Proposal title
observer	Dr. CXC Calibration	Principal investigator
object	LMC X-1	Source name
dtcycle	0	
cycle	P	events from which exps? Prim/Second/Both
ra_targ	84.914583	Observer's specified target RA
dec_targ	-69.743611	Observer's specified target Dec
ra_nom	85.565708304424	Nominal RA
dec_nom	-69.71535454881	Nominal Dec
roll_nom	113.27712925001	Nominal Roll
revision	5	Processing version of data
ontime	1758.5748897344	Sum of GTIs [s]
livetime	1736.3067555939	Livetime [s]
ontime0	1758.7390497327	Sum of GTIs [s]
ontime1	1758.6980097368	Sum of GTIs [s]
ontime2	1758.6569697335	Sum of GTIs [s]
ontime3	1758.6159297377	Sum of GTIs [s]
ontime6	1758.5748897344	Sum of GTIs [s]
ontime7	1758.780089736	Sum of GTIs [s]
l2events	88320	Number of level 2 events



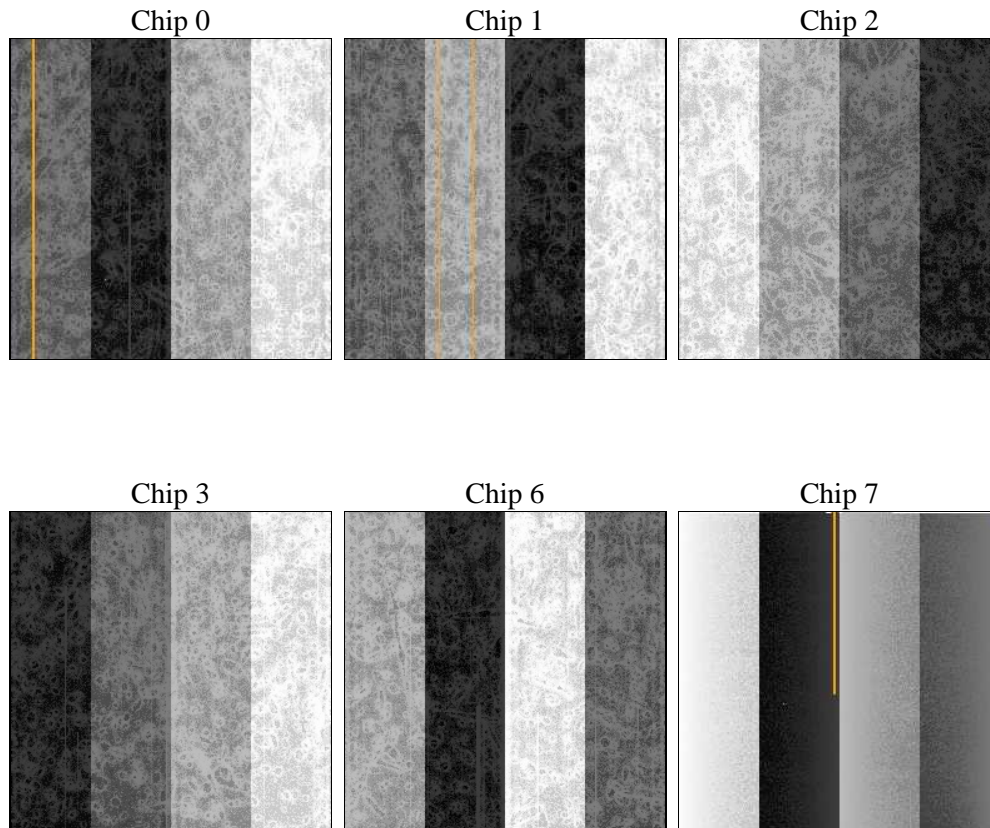
2 OBI

2.1 OBI

2.1.1 Images



2.1.2 Bias



2.1.3 Parameters

obi_num	1	Obi number	sched_exp_time	2000.000000	Scheduled observation exposure time
ascdsver	8.1.2	ASCDS version number	ontime	1758.5748897344	Sum of GTIs [s]
caldsver	4.1.4	 	ontime0	1758.7390497327	Sum of GTIs [s]
date	2009-12-17T09:24:50	Date and time of file creation	ontime1	1758.6980097368	Sum of GTIs [s]
revision	3	Processing version of data	ontime2	1758.6569697335	Sum of GTIs [s]
			ontime3	1758.6159297377	Sum of GTIs [s]
			ontime6	1758.5748897344	Sum of GTIs [s]
			ontime7	1758.780089736	Sum of GTIs [s]
			l1events	184848	Number of level 1 events

2.1.4 Events

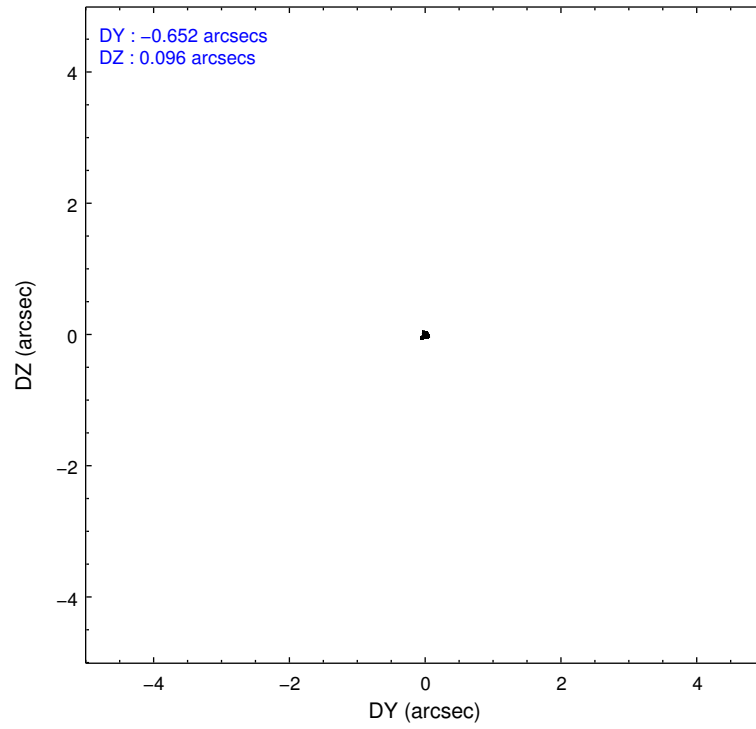
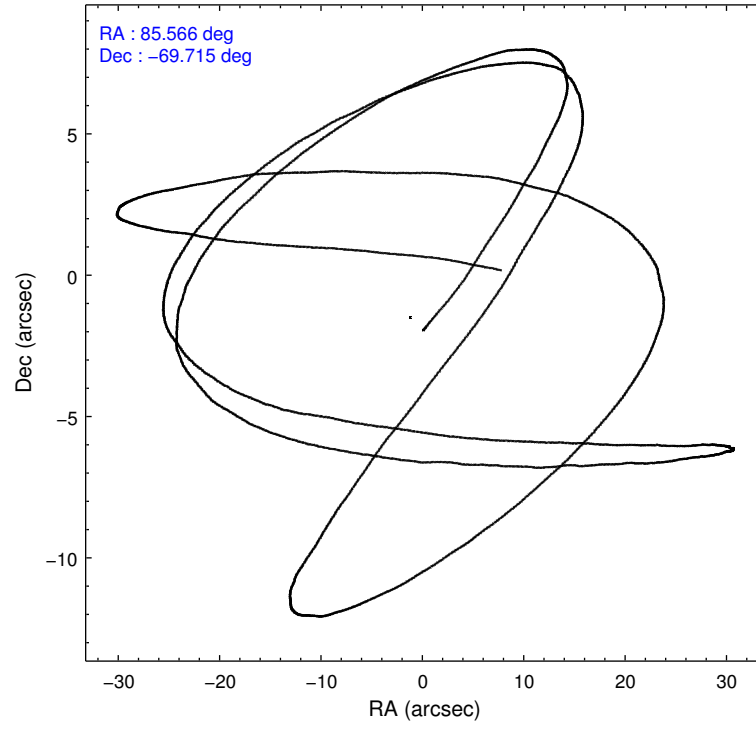
	ccd 0	ccd 1	ccd 2	ccd 3	ccd 6	ccd 7
level 1 events	16762	15881	17486	17590	98331	18798
rejected events	14556	13632	15161	15310	24809	10682
rejected %	86%	85%	86%	87%	25%	56%

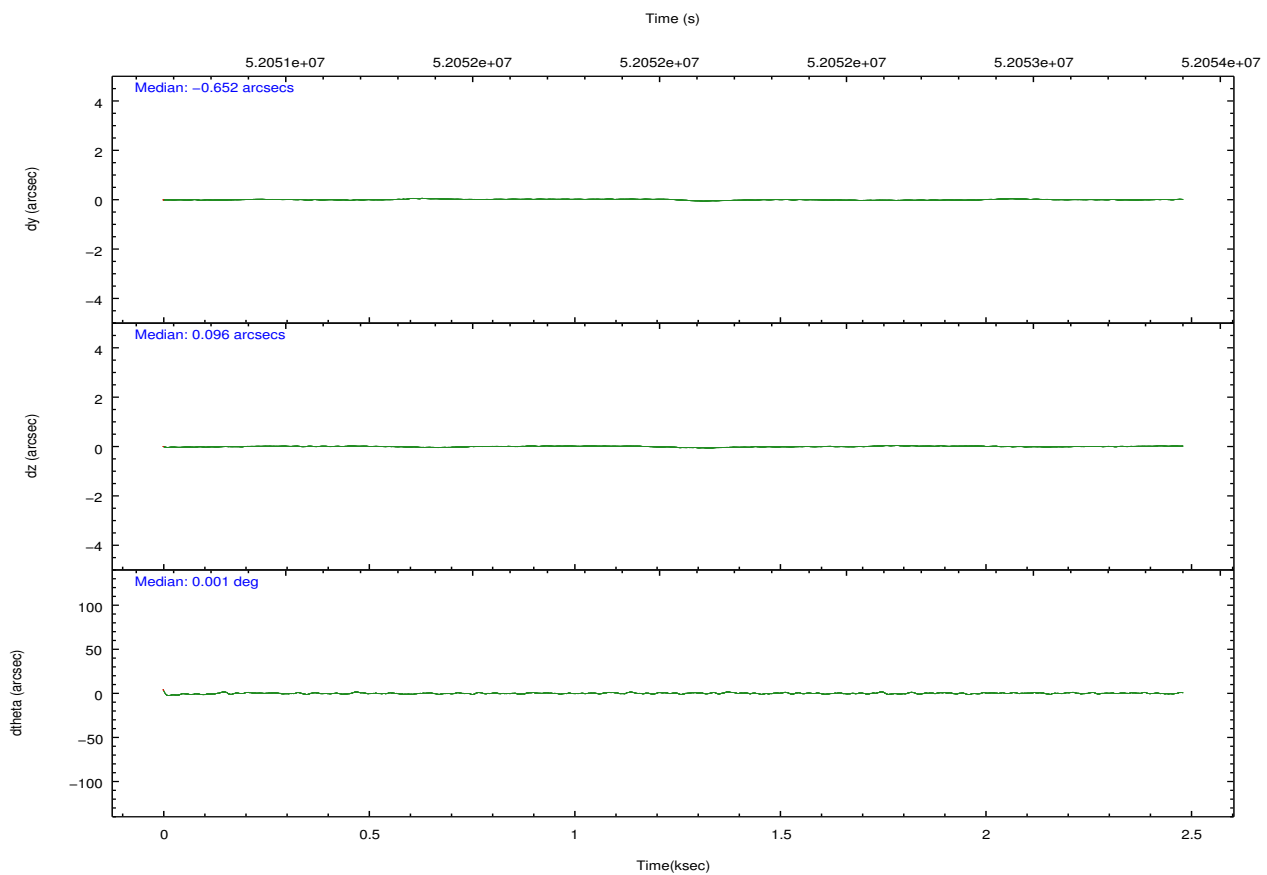
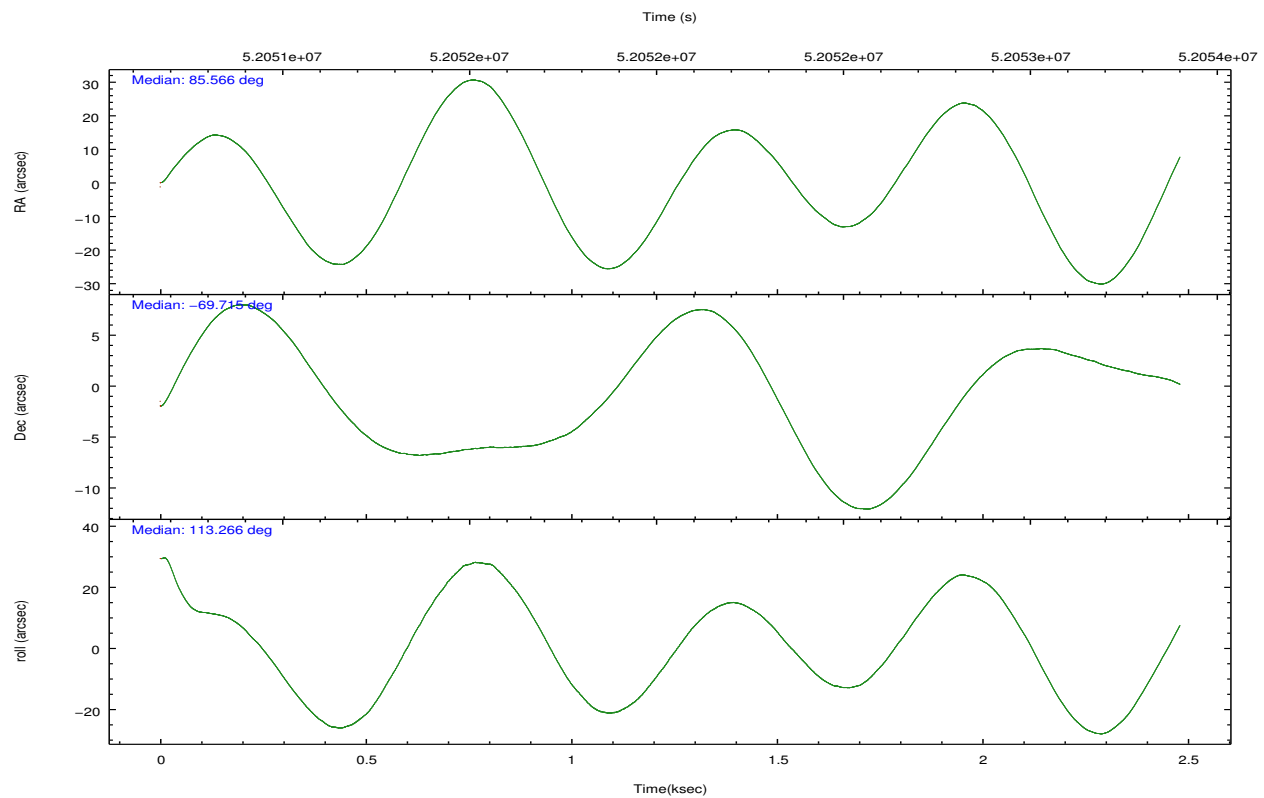
	ccd 0	ccd 1	ccd 2	ccd 3	ccd 6	ccd 7
grade 0 events	1169	1128	1350	1225	51437	840
	6%	7%	7%	6%	52%	4%
grade 1 events	7	7	9	10	4444	11
	0%	0%	0%	0%	4%	0%
grade 2 events	421	447	374	452	11786	1362
	2%	2%	2%	2%	11%	7%
grade 3 events	160	182	163	159	3467	801
	0%	1%	0%	0%	3%	4%
grade 4 events	161	187	148	177	3465	688
	0%	1%	0%	1%	3%	3%
grade 5 events	460	460	393	430	2870	1115
	2%	2%	2%	2%	2%	5%
grade 6 events	299	305	291	274	3518	4436
	1%	1%	1%	1%	3%	23%
grade 7 events	14085	13165	14758	14863	17344	9545
	84%	82%	84%	84%	17%	50%

2.2 Compared Parameters

Parameter	Planned	Actual	Parameter	Planned	Actual
Instrument	ACIS	ACIS	Obspar format version number	6	6
Detector	ACIS-012367	ACIS-012367	Obspar file type	PREDICTED	ACTUAL
Grating	NONE	NONE	Obspar update status	NONE	UPDATED
Data mode	FAINT	FAINT	Number of optional ACIS chips dropped	0	0
Observation mode	POINTING	POINTING	On-chip summing requested	N	N
Pointing RA	85.629307	85.56570830442421	Subarray requested	NONE	NONE
Pointing Dec	-69.732885	-69.71535454881021	Alternating exposures requested	N	N
Pointing Roll	113.127938	113.2771292500127	Primary exposure time	0.000000	3.2
SIM focus pos (mm)	-0.782348	-0.7362356599963374			
SIM defocus (mm)	0	0.04611255558364913			
SIM translation stage pos (mm)	-233.592463	-233.5874344608287			
SIM translation stage offset (mm)	0	-0.005018542100998502			
Observation start time	52051275.184000	52050608.645054			
Observation start date	1999-08-26T10:40:11	1999-08-26T10:30:08			
Observation end time	52053275.184000	52053638.545163			
Observation end date	1999-08-26T11:13:31	1999-08-26T11:20:38			
Read mode	TIMED	TIMED			

2.3 Aspect



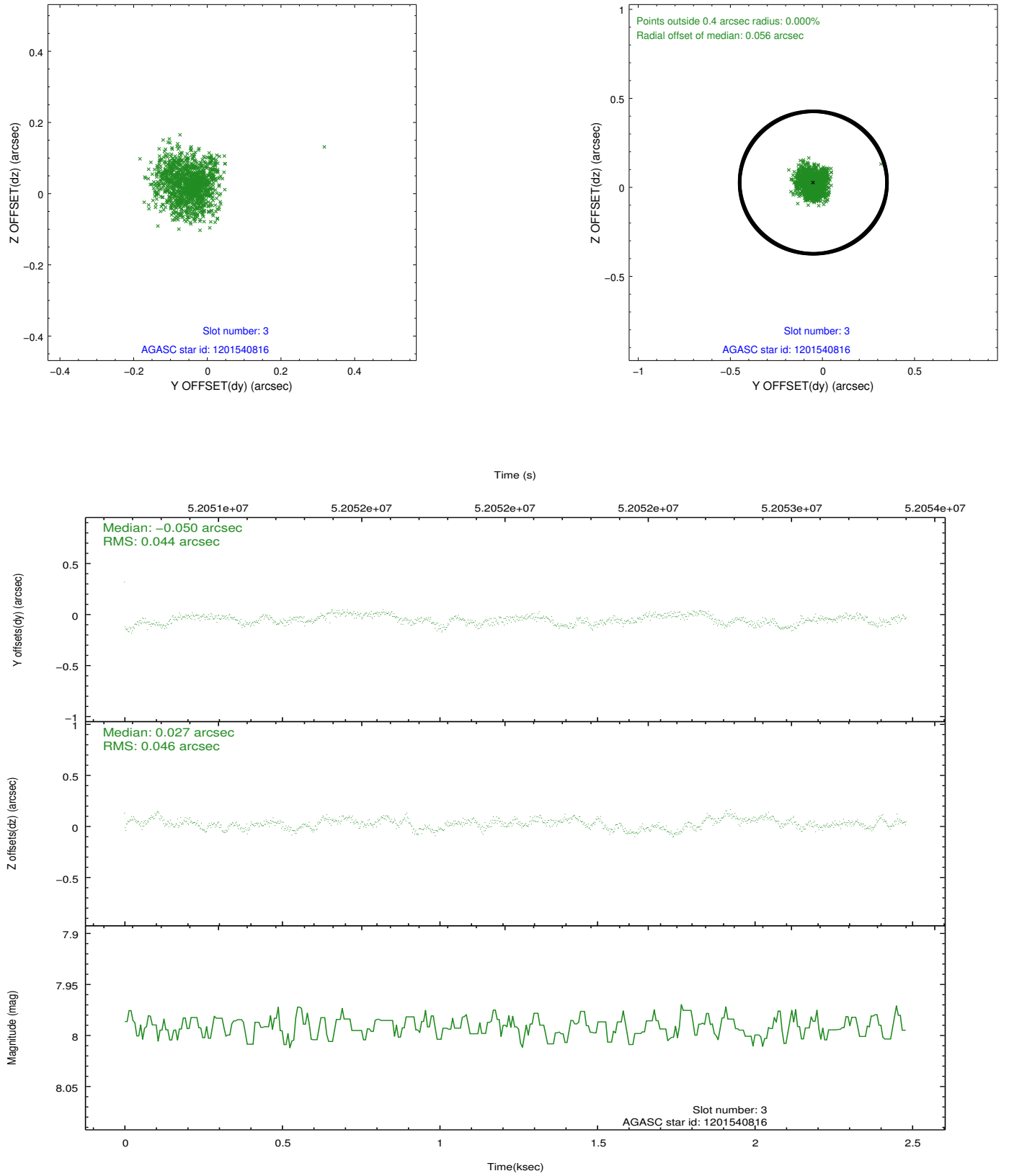


Slot Statistics

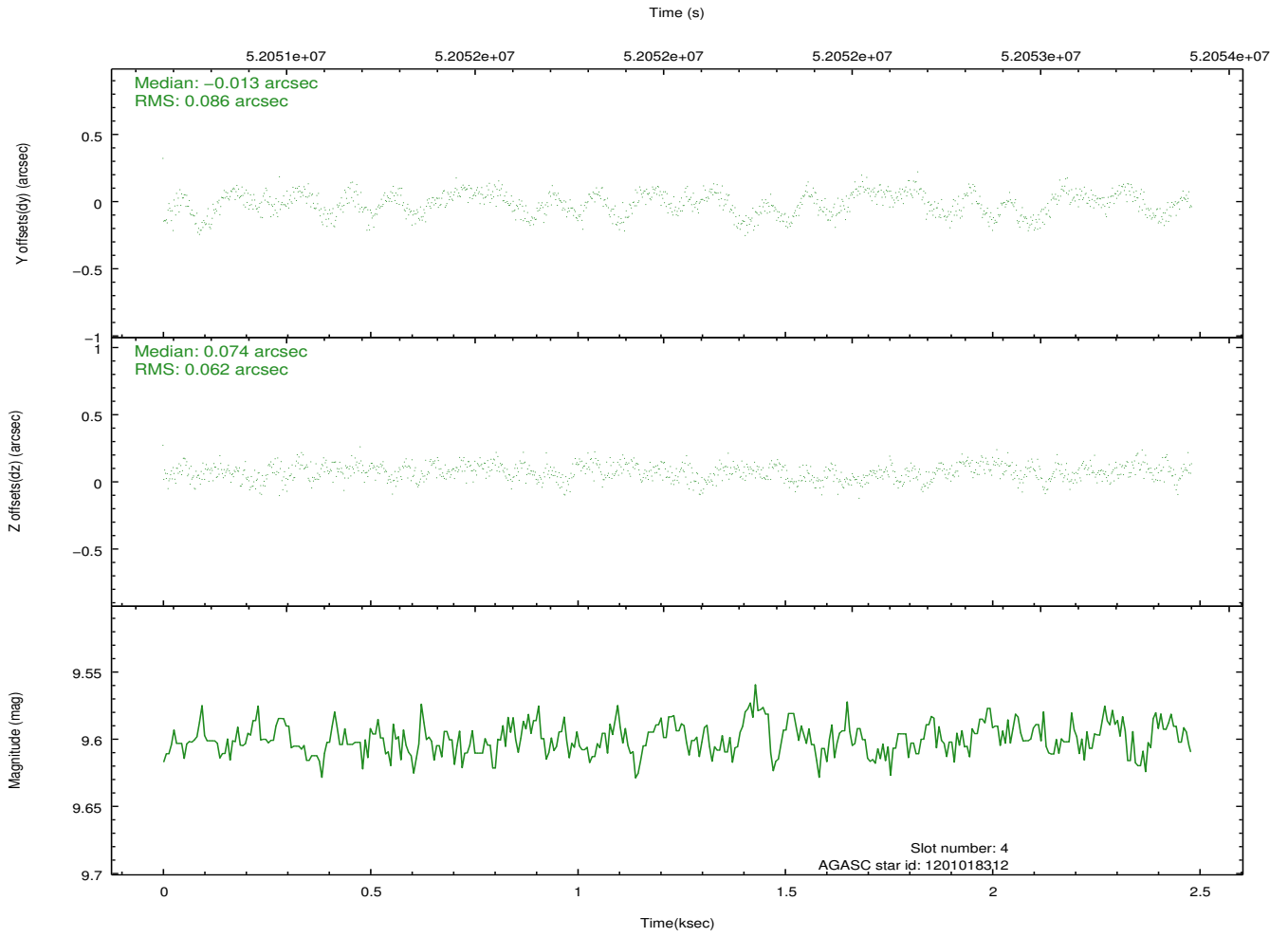
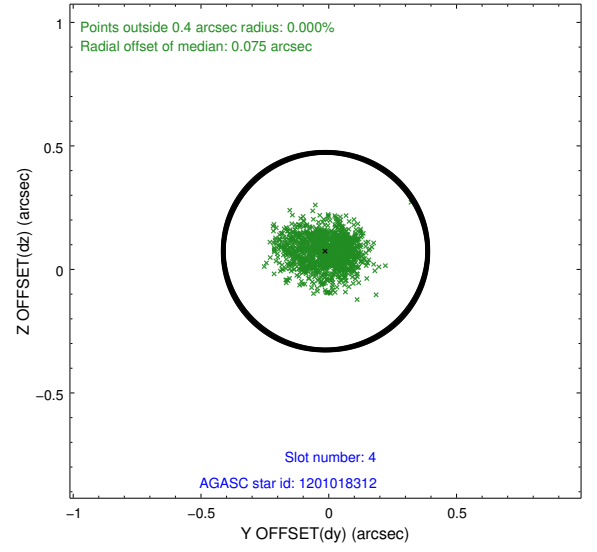
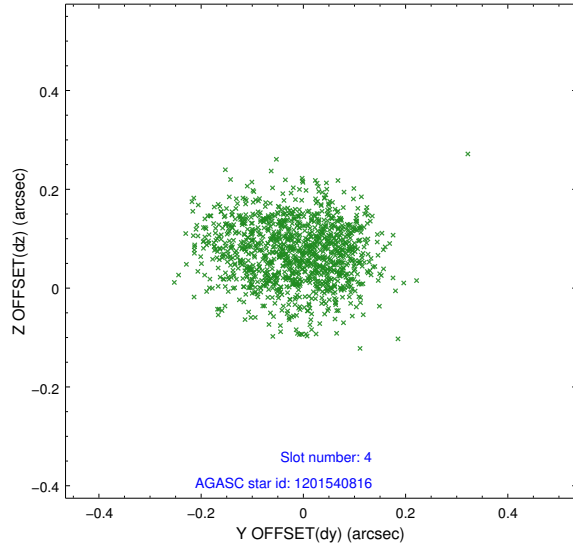
slot	status	id	mag	n_pts	med_dy	med_dz	dr1	dr2	ra	dec	mean_y	mean_z
0	FID	ACIS-I-2	7.20	1211	-0.040	0.053	0.009	0.014	0.000000	0.000000	-753.71	-829.57
1	FID	ACIS-I-4	7.24	1209	0.137	0.016	0.006	0.012	0.000000	0.000000	2160.08	1075.81
2	FID	ACIS-I-5	7.23	1211	-0.199	-0.000	0.008	0.014	0.000000	0.000000	-1806.02	1075.25
3	GUIDE	1201540816	7.99	1211	-0.050	0.027	0.069	0.104	86.998494	-69.749817	-743.94	-1537.49
4	GUIDE	1201018312	9.60	1211	-0.013	0.074	0.114	0.176	86.298231	-69.115627	1701.28	-1661.37
5	GUIDE	1201540760	8.56	1211	0.048	-0.066	0.097	0.161	84.403691	-70.419249	-1704.74	2334.44
6	GUIDE	1201542232	9.67	1209	0.008	-0.037	0.162	0.267	84.533398	-70.465667	-1921.12	2255.55
7	UNUSED		0.00	0	0.000	0.000	0.000	0.000	0.000000	0.000000	0.00	0.00

2.4 Star Slots

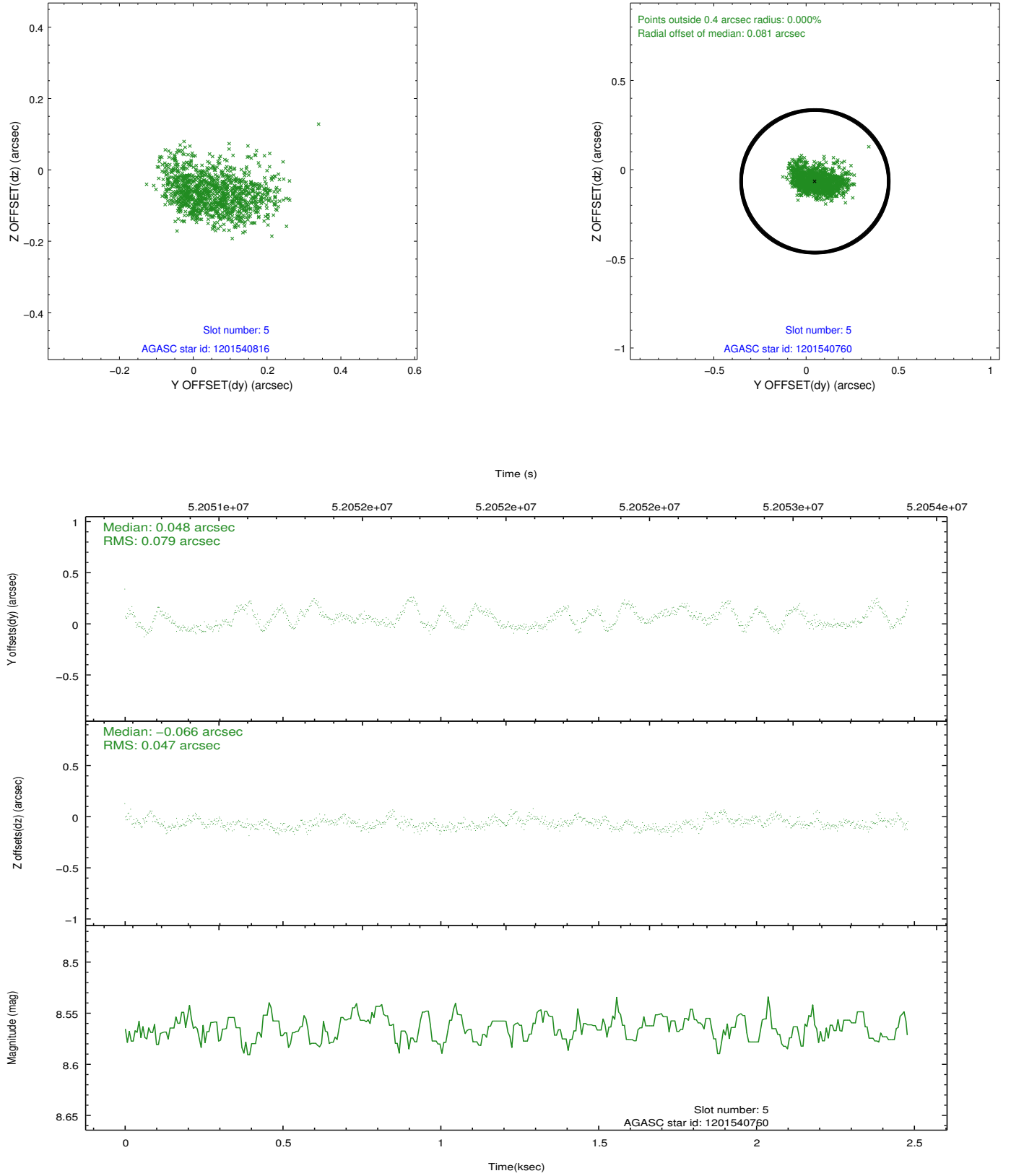
2.4.1 Slot 3



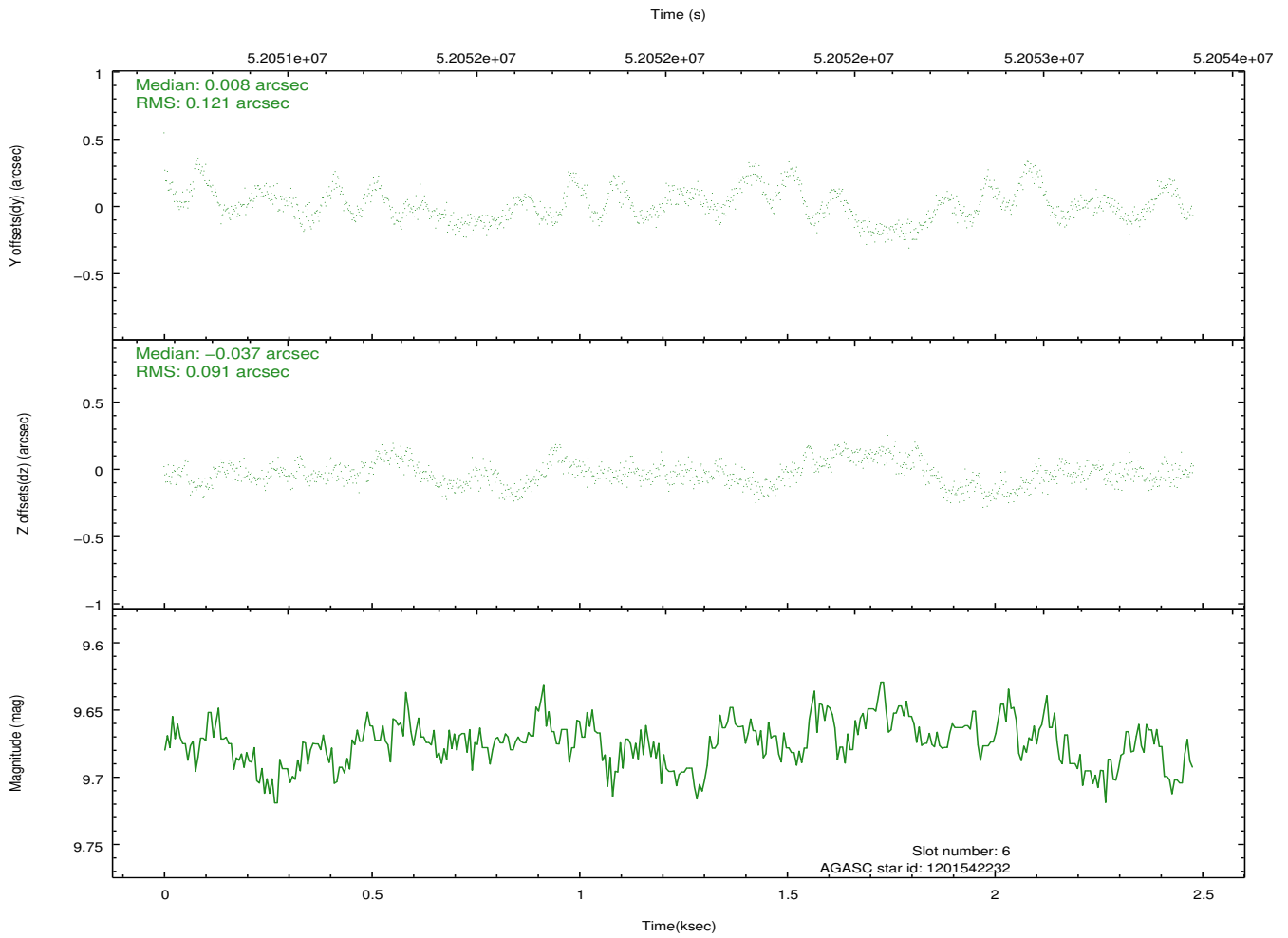
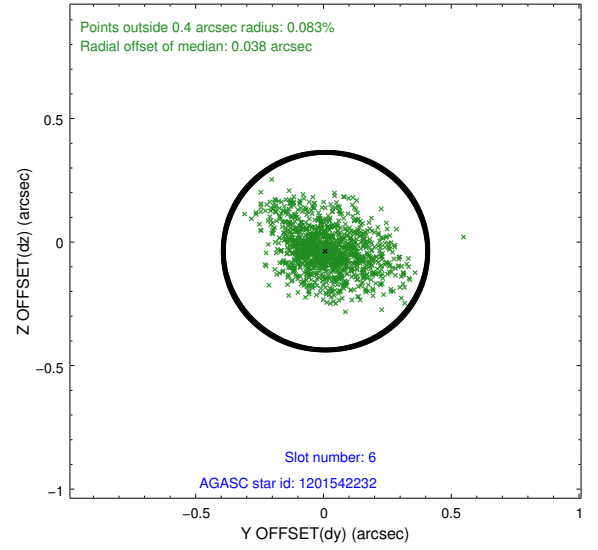
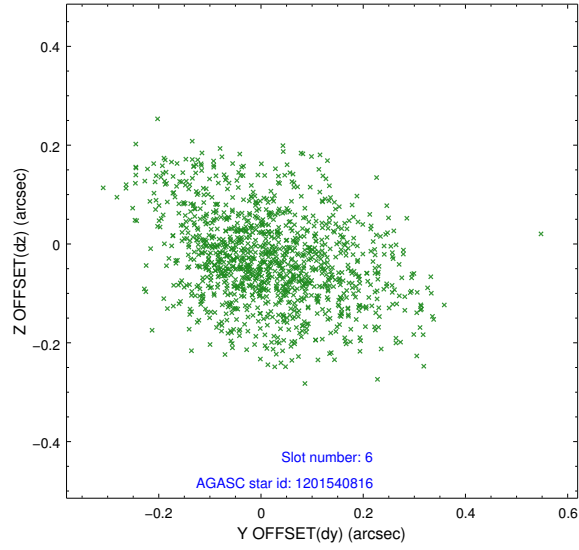
2.4.2 Slot 4



2.4.3 Slot 5

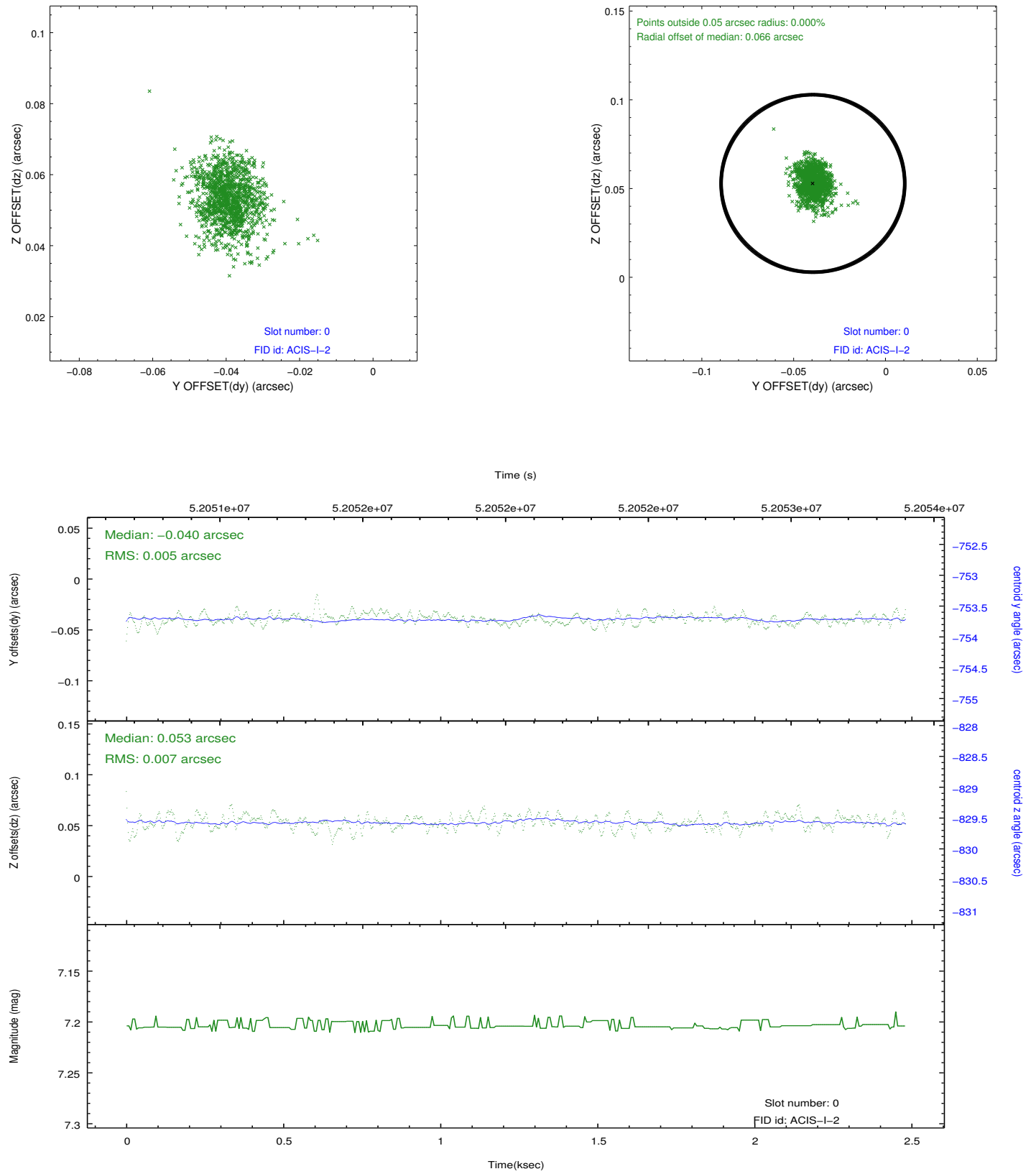


2.4.4 Slot 6

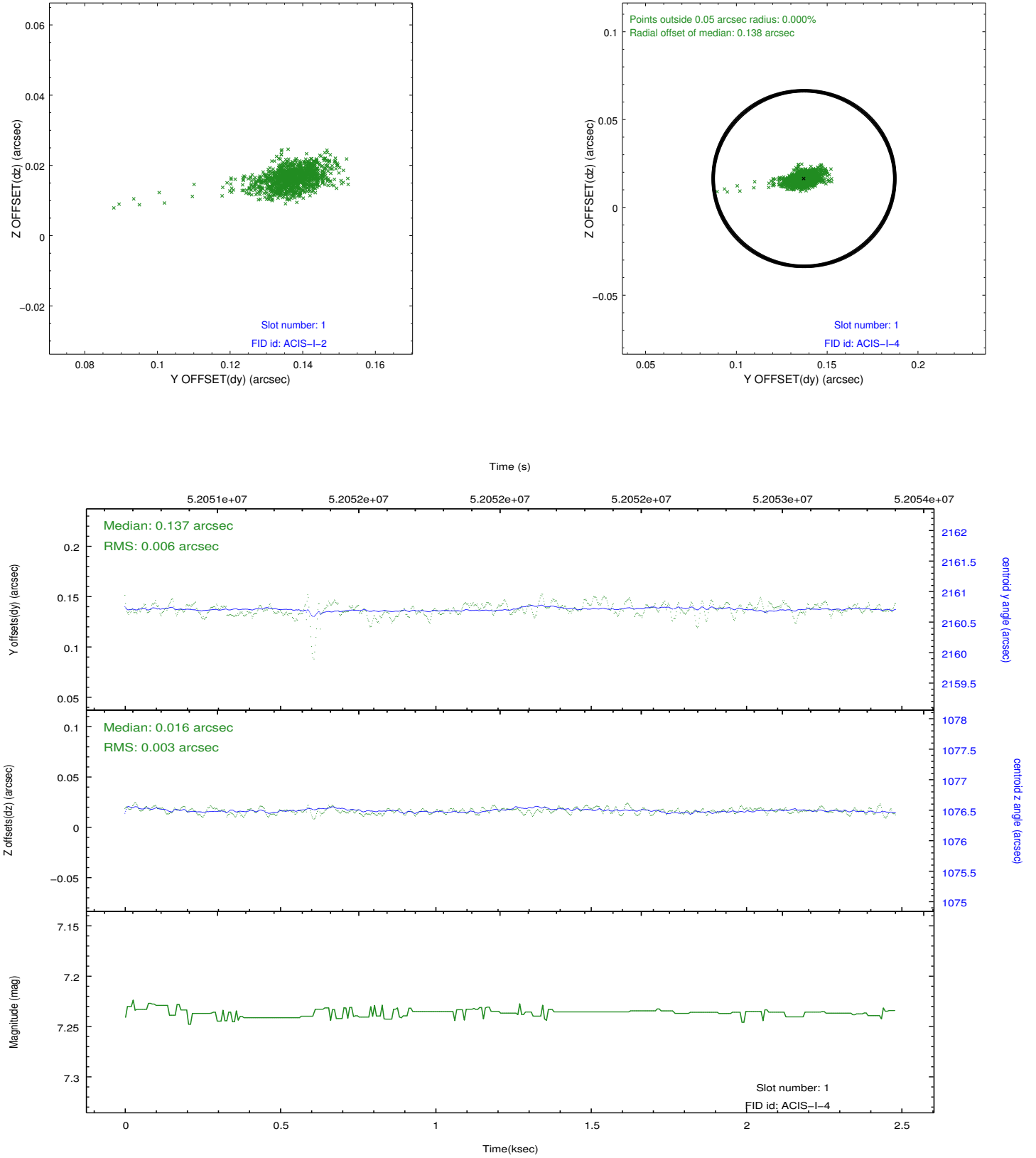


2.5 FID Slots

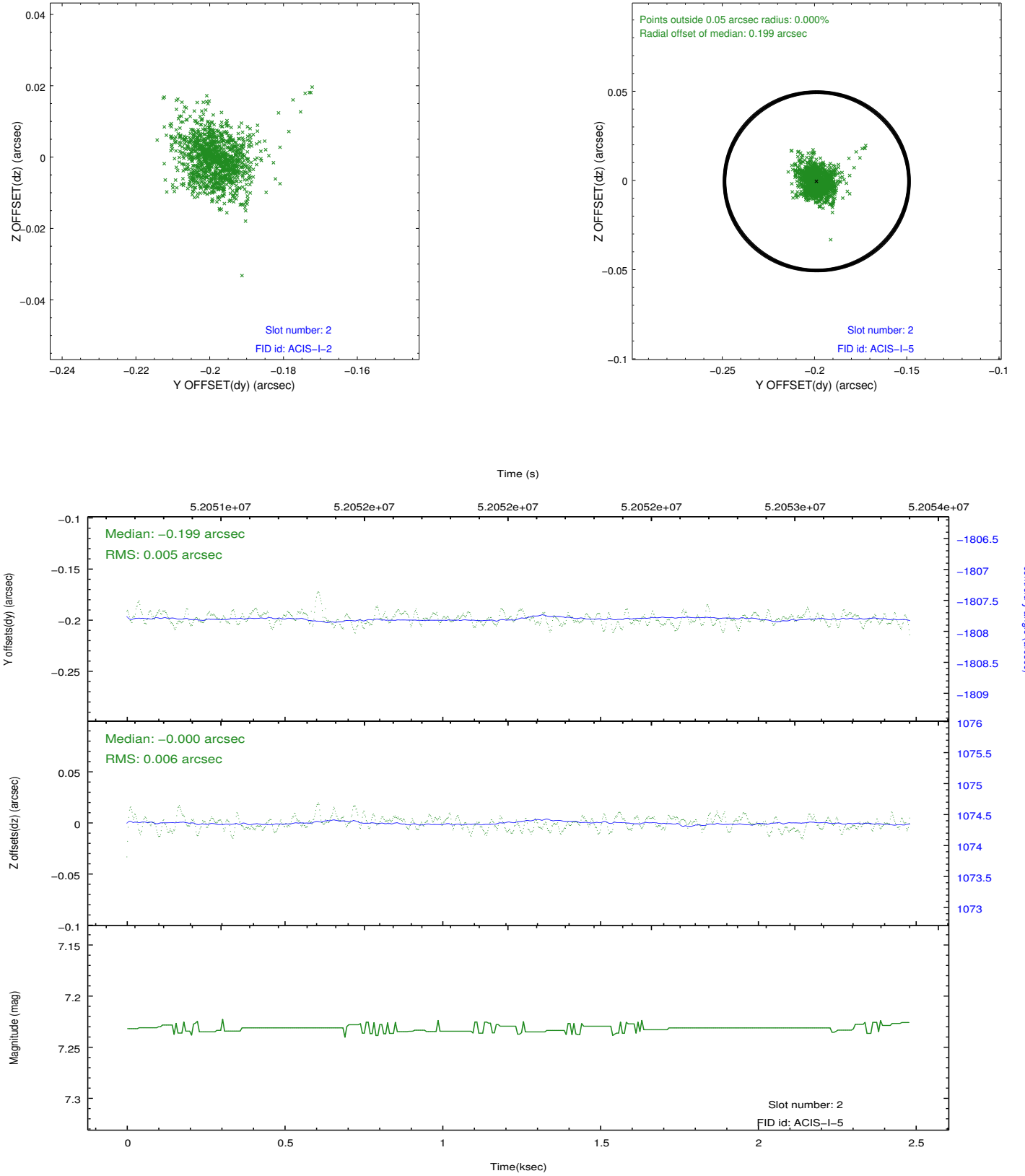
2.5.1 Slot 0



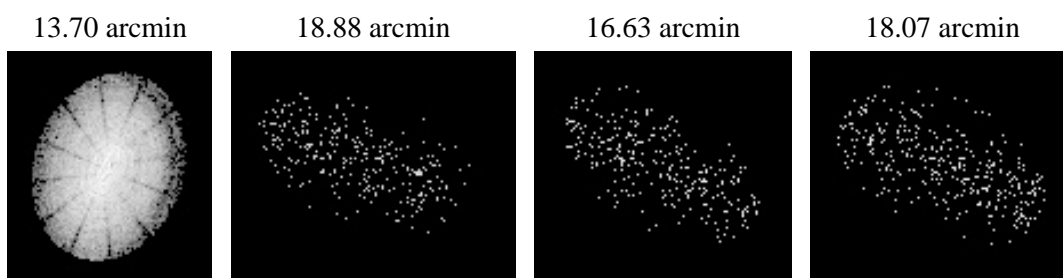
2.5.2 Slot 1



2.5.3 Slot 2



3 Point Sources



A Summary

A.1 Status

V&V Scientist	Joy Nichols
V&V Date (YYYY-MM-DD)	2010.07.28
V&V Edition	1
V&V Disposition and Status	OK
V&V Charge Time	1.76

A.2 Comments

Target is very off-axis on S2.

===

Guide star in slot 7 was not acquired for this observation.

===

The focal plane temperature is approximately -100 C during this observation. This reprocessing of the data applies no CTI correction because none is available for this temperature at present.

The ACIS CTI correction has not been calibrated at this temperature, because it was early in the mission, and ACIS had not yet been lowered to the standard -119.7 C. Both front and back illuminated chips are affected. However a T_GAIN correction has been applied to the BI chips (ACIS-5 and ACIS-7) data included here.

The ACIS spectral response calibration is less accurate at these warmer temperatures than it is at -119.7 C. Users whose science objectives depend on the most accurate spectral response (ie: fitting line-rich spectra) may notice an effect. Users whose science objectives do not depend on the most accurate spectral response should not notice an effect.