

V&V Reference Report

L2 ASCDS Version : 8.4.5

Observation 1037 - L2 Version 3
Chandra X-Ray Center

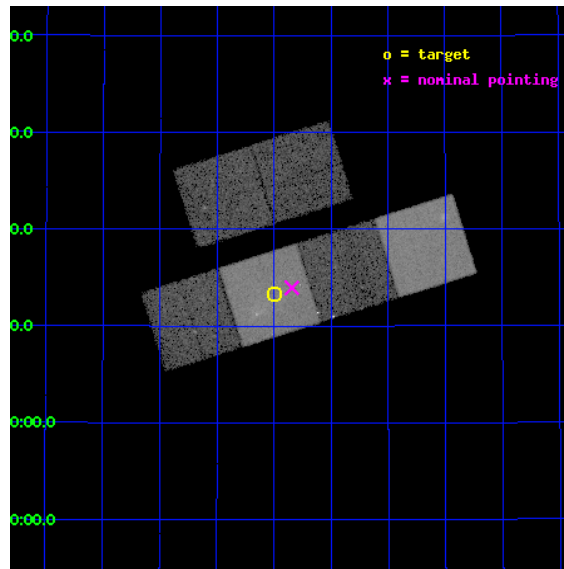
L2 Processing Date : Sep 20 2012

Contents

1	Front	2
2	OBI	3
2.1	OBI	3
2.1.1	Images	3
2.1.2	Bias	3
2.1.3	Parameters	4
2.1.4	Events	4
2.2	Compared Parameters	5
2.3	Aspect	6
2.4	Star Slots	9
2.4.1	Slot 3	9
2.4.2	Slot 4	10
2.4.3	Slot 5	11
2.4.4	Slot 6	12
2.4.5	Slot 7	13
2.5	FID Slots	14
2.5.1	Slot 0	14
2.5.2	Slot 1	15
2.5.3	Slot 2	16
A	Summary	17
A.1	Status	17
A.2	Comments	17

1 Front

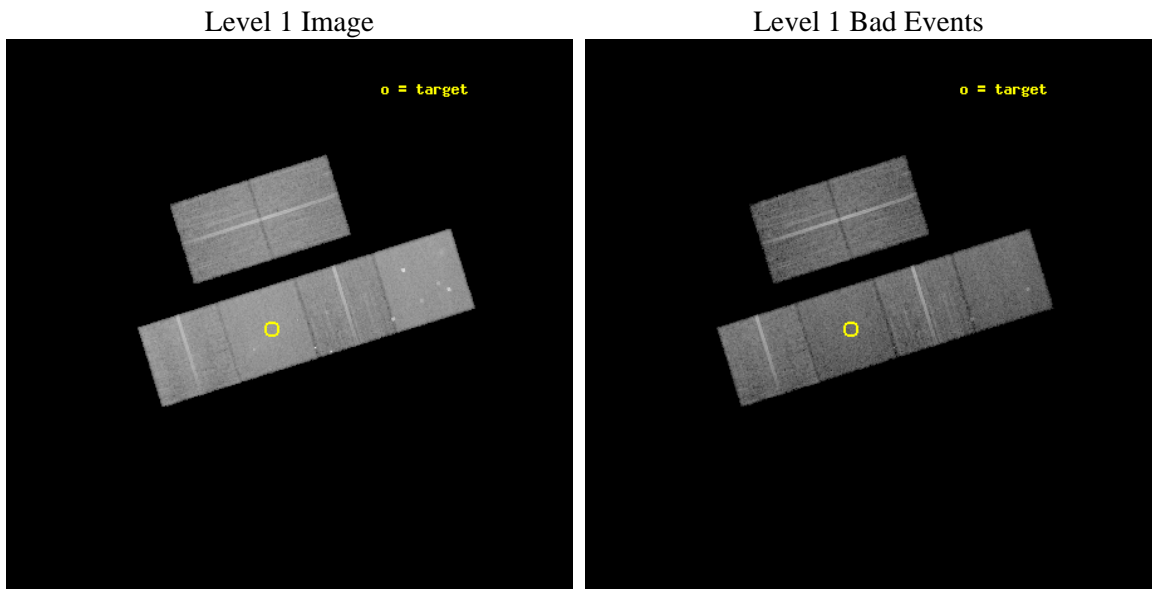
seq_num	500103	Sequence number
obs_id	1037	Observation id
title	G0.9+0.1 AND G74.9+1.2	Proposal title
observer	Professor Gordon Garmire	Principal investigator
object	G74.9+1.2	Source name
dtcycle	0	
cycle	P	events from which exps? Prim/Second/Both
ra_targ	304.0	Observer's specified target RA [deg]
dec_targ	37.220833	Observer's specified target Dec [deg]
ra_nom	303.9609702411	Nominal RA [deg]
dec_nom	37.232496790654	Nominal Dec [deg]
roll_nom	162.58415553945	Nominal Roll [deg]
revision	3	Processing version of data
ontime	18059.492596149	Sum of GTIs [s]
livetime	17830.812426776	Livetime [s]
ontime2	18059.533636153	Sum of GTIs [s]
ontime3	18059.369476154	Sum of GTIs [s]
ontime5	18059.451556146	Sum of GTIs [s]
ontime6	18059.410516158	Sum of GTIs [s]
ontime7	18059.492596149	Sum of GTIs [s]
ontime8	18059.328436151	Sum of GTIs [s]
l2events	190890	Number of level 2 events



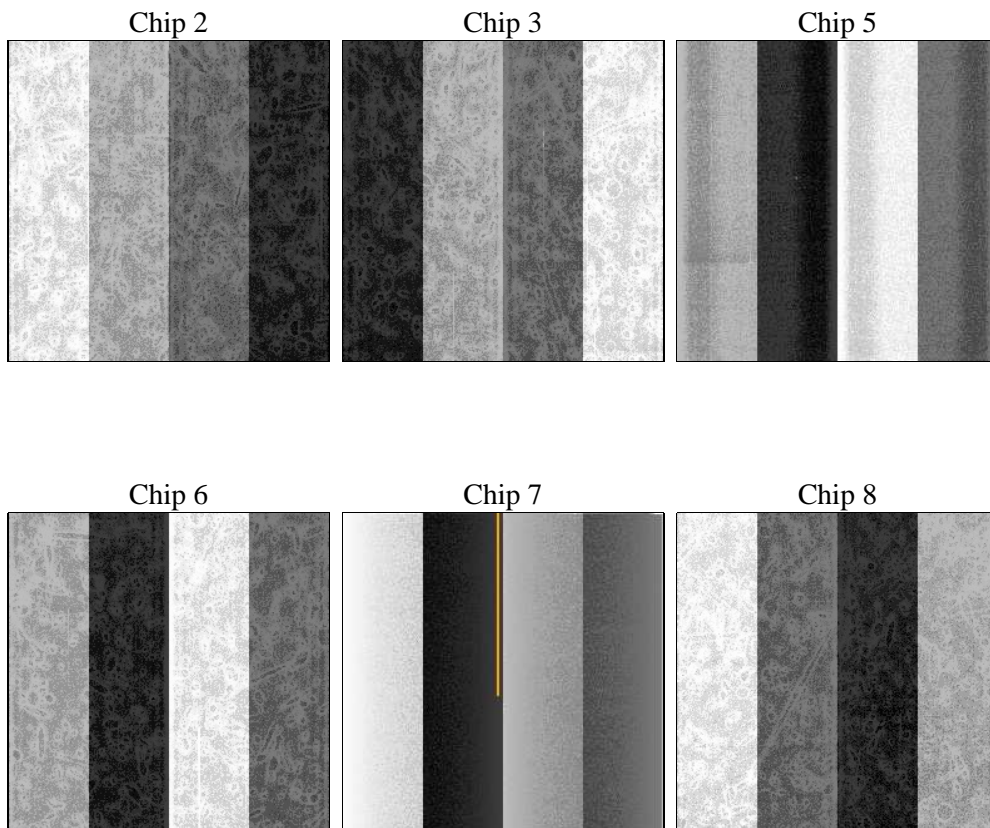
2 OBI

2.1 OBI

2.1.1 Images



2.1.2 Bias



2.1.3 Parameters

obi_num	0	Obi number	sched_exp_time	18000.000000	[s] Scheduled observation exposure time
ascdsver	8.4.5	Processing system revision	ontime	18059.492596149	Sum of GTIs [s]
caldsver	4.5.1.1	 	ontime2	18059.533636153	Sum of GTIs [s]
date	2012-09-20T13:26:14	Date and time of file creation	ontime3	18059.369476154	Sum of GTIs [s]
revision	3	Processing version of data	ontime5	18059.451556146	Sum of GTIs [s]
			ontime6	18059.410516158	Sum of GTIs [s]
			ontime7	18059.492596149	Sum of GTIs [s]
			ontime8	18059.328436151	Sum of GTIs [s]
			l1events	832888	Number of level 1 events

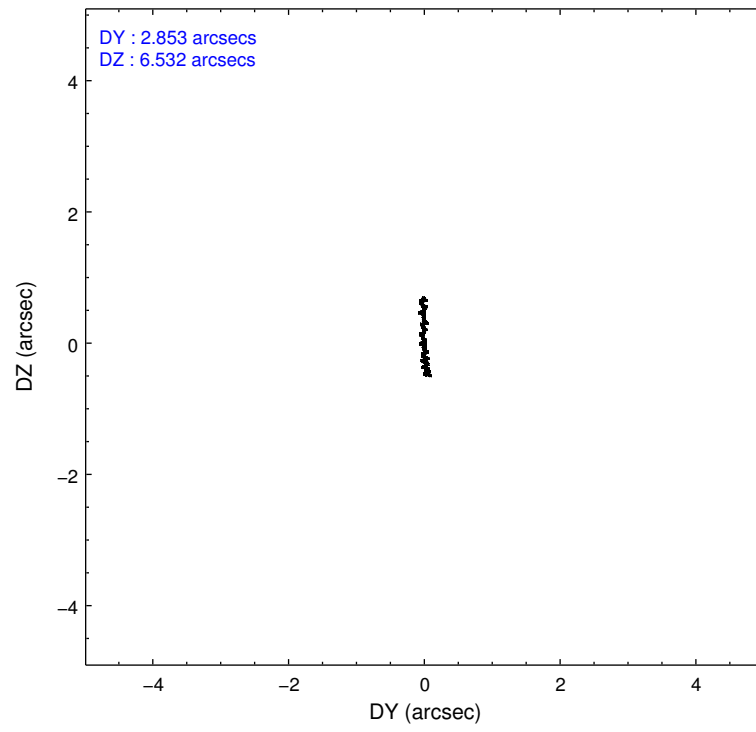
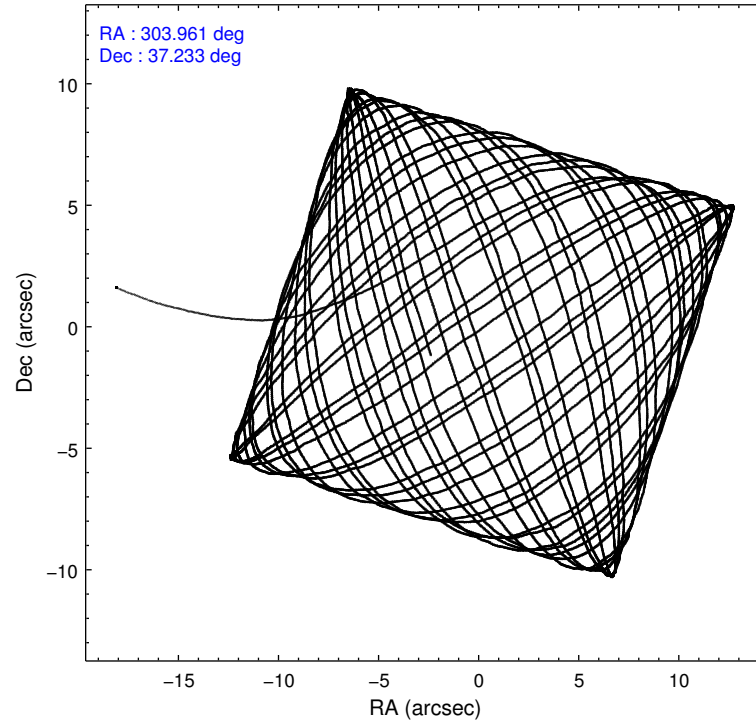
2.1.4 Events

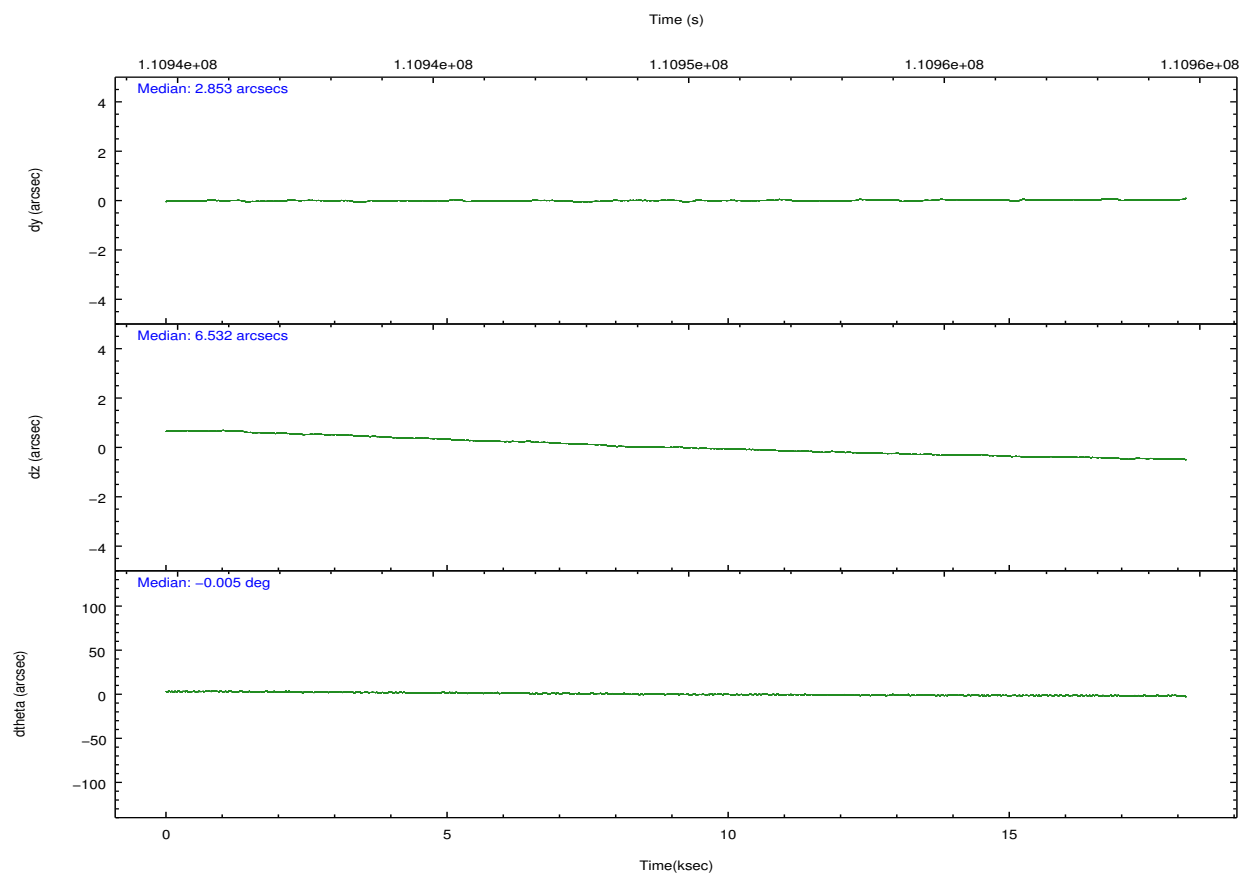
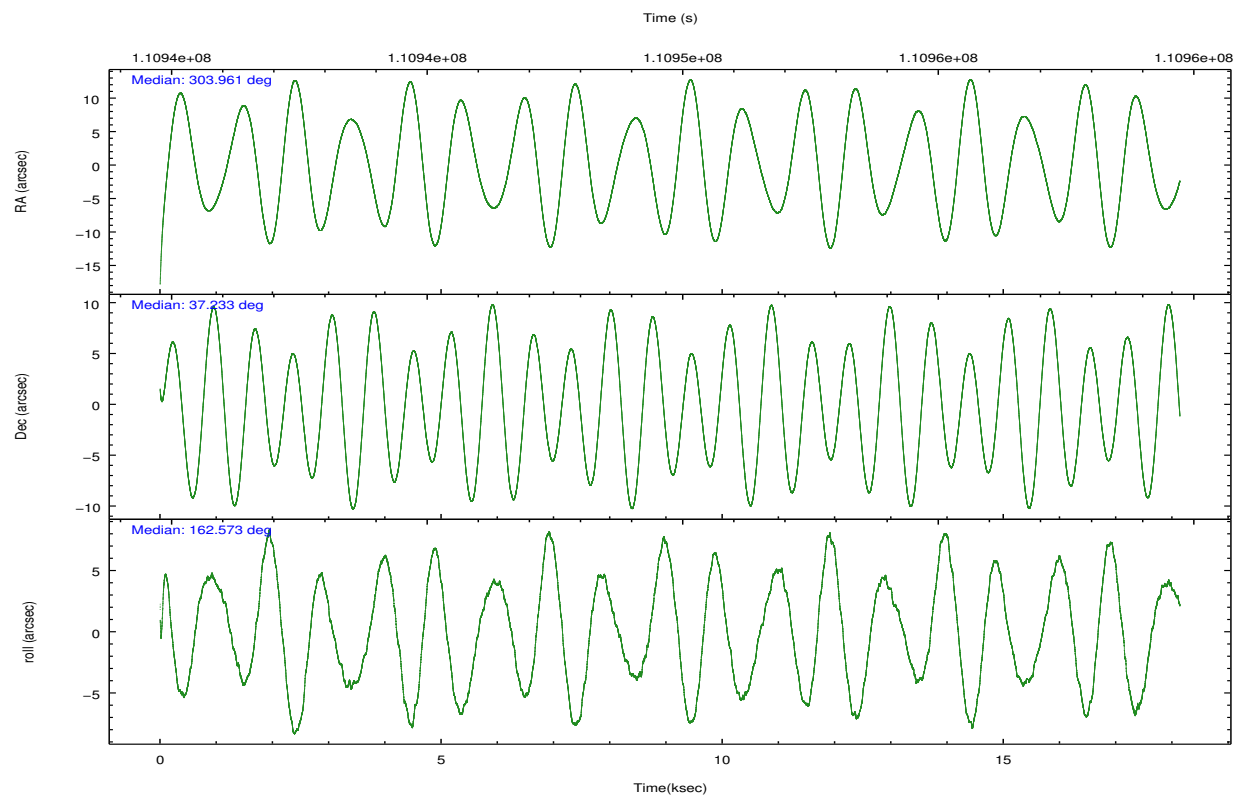
	ccd 2	ccd 3	ccd 5	ccd 6	ccd 7	ccd 8		ccd 2	ccd 3	ccd 5	ccd 6	ccd 7	ccd 8
level 1 events	120798	116843	168894	122051	156920	147382	grade 0 events	6240	6177	10687	7501	7320	9740
rejected events	106665	103054	89705	106050	88171	117873		5%	5%	6%	6%	4%	6%
rejected %	88%	88%	53%	86%	56%	79%	grade 1 events	50	65	305	85	164	85
								0%	0%	0%	0%	0%	0%
							grade 2 events	2893	2656	22573	2942	14091	6579
								2%	2%	13%	2%	8%	4%
							grade 3 events	1286	1305	3516	1429	6366	2854
								1%	1%	2%	1%	4%	1%
							grade 4 events	1291	1326	3386	1373	6430	2748
								1%	1%	2%	1%	4%	1%
							grade 5 events	4113	4576	12589	4995	14744	6368
								3%	3%	7%	4%	9%	4%
							grade 6 events	2430	2331	39054	2762	34564	7598
								2%	1%	23%	2%	22%	5%
							grade 7 events	102495	98407	76784	100964	73241	111410
								84%	84%	45%	82%	46%	75%

2.2 Compared Parameters

Parameter	Planned	Actual	Parameter	Planned	Actual
Instrument	ACIS	ACIS	Obspar format version number	7	7
Detector	ACIS-235678	ACIS-235678	Obspar file type	PREDICTED	ACTUAL
Grating	NONE	NONE	Obspar update status	NONE	UPDATED
Data mode	FAINT	FAINT	Number of optional ACIS chips dropped	0	0
Observation mode	POINTING	POINTING	On-chip summing requested	N	N
[deg] Pointing RA	303.994342	303.9609702411008	Subarray requested	NONE	NONE
[deg] Pointing Dec	37.238698	37.23249679065412	Alternating exposures requested	N	N
[deg] Pointing Roll	162.407347	162.5841555394515	[s] Primary exposure time	0.000000	3.2
[mm] SIM focus pos	-0.684267	-0.6828225247311905			
[mm] SIM defocus	0	0.001444936568705701			
[mm] SIM translation stage pos	-190.132523	-190.1425803651734			
[mm] SIM translation stage offset	0	0.01005778216563158			
[s] Observation start time (MET)	110940823.184000	110939806.24289			
Observation start date	2001-07-08T00:52:39	2001-07-08T00:36:46			
[s] Observation end time (MET)	110958823.184000	110959563.11867			
Observation end date	2001-07-08T05:52:39	2001-07-08T06:06:03			
Read mode	TIMED	TIMED			

2.3 Aspect



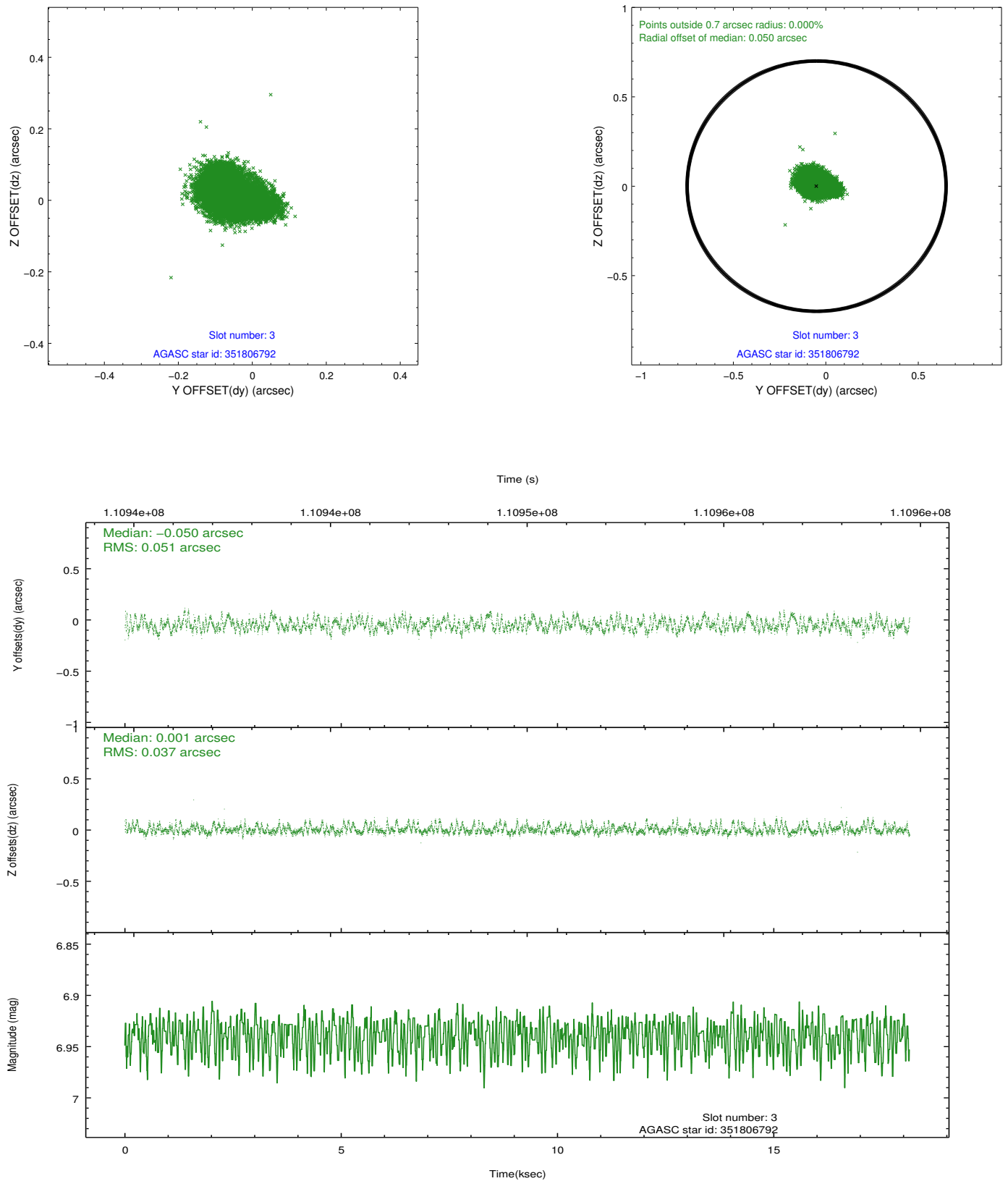


Slot Statistics

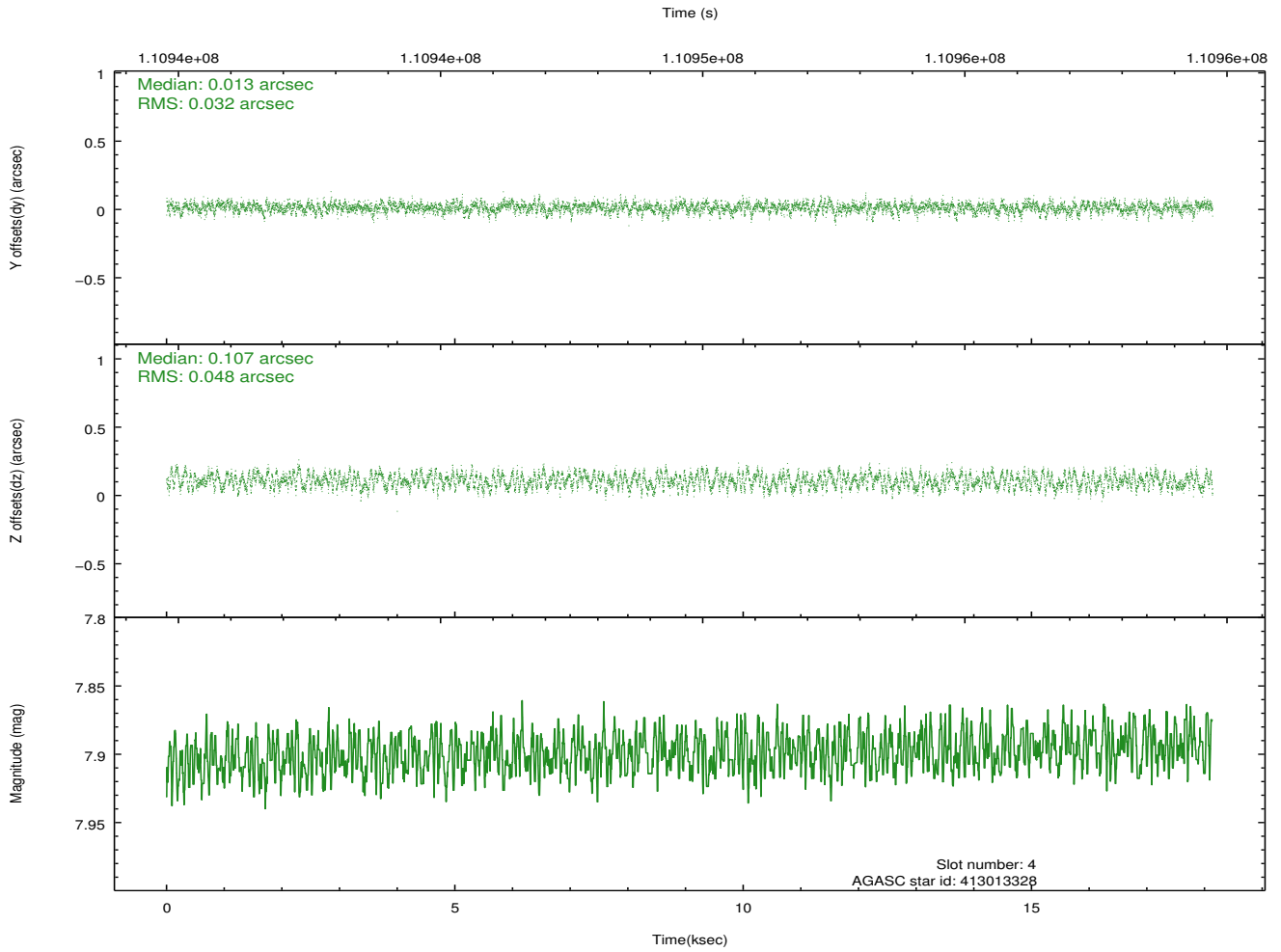
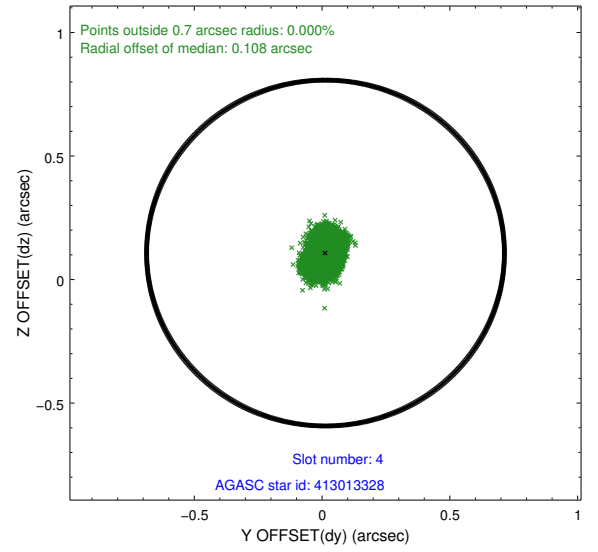
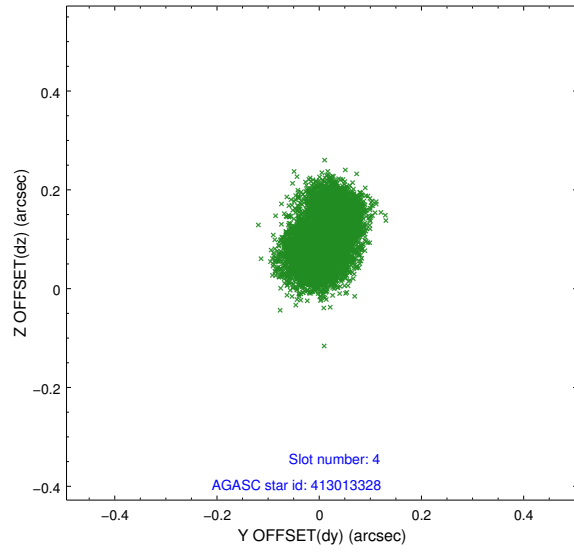
slot	status	id	mag	n_pts	med_dy	med_dz	dr1	dr2	ra	dec	mean_y	mean_z
0	FID	ACIS-S-2	7.11	4424	-0.015	0.015	0.010	0.016	0.000000	0.000000	-755.48	-1727.68
1	FID	ACIS-S-4	7.20	4424	-0.059	0.003	0.009	0.015	0.000000	0.000000	2157.62	180.60
2	FID	ACIS-S-5	7.23	4425	0.042	-0.010	0.008	0.014	0.000000	0.000000	-1808.01	174.46
3	GUIDE	351806792	6.94	8849	-0.050	0.001	0.070	0.107	304.117302	37.056402	-535.56	519.08
4	GUIDE	413013328	7.90	8847	0.013	0.107	0.062	0.097	304.245350	37.681420	-199.80	-1735.60
5	GUIDE	351806216	8.06	8848	0.066	0.080	0.065	0.102	304.172520	37.448440	-257.24	-873.71
6	GUIDE	351812544	8.14	8847	-0.048	-0.045	0.059	0.093	304.201324	37.157547	-654.67	98.69
7	GUIDE	351693128	8.07	8845	0.018	-0.145	0.066	0.112	303.632362	36.660995	367.59	2297.05

2.4 Star Slots

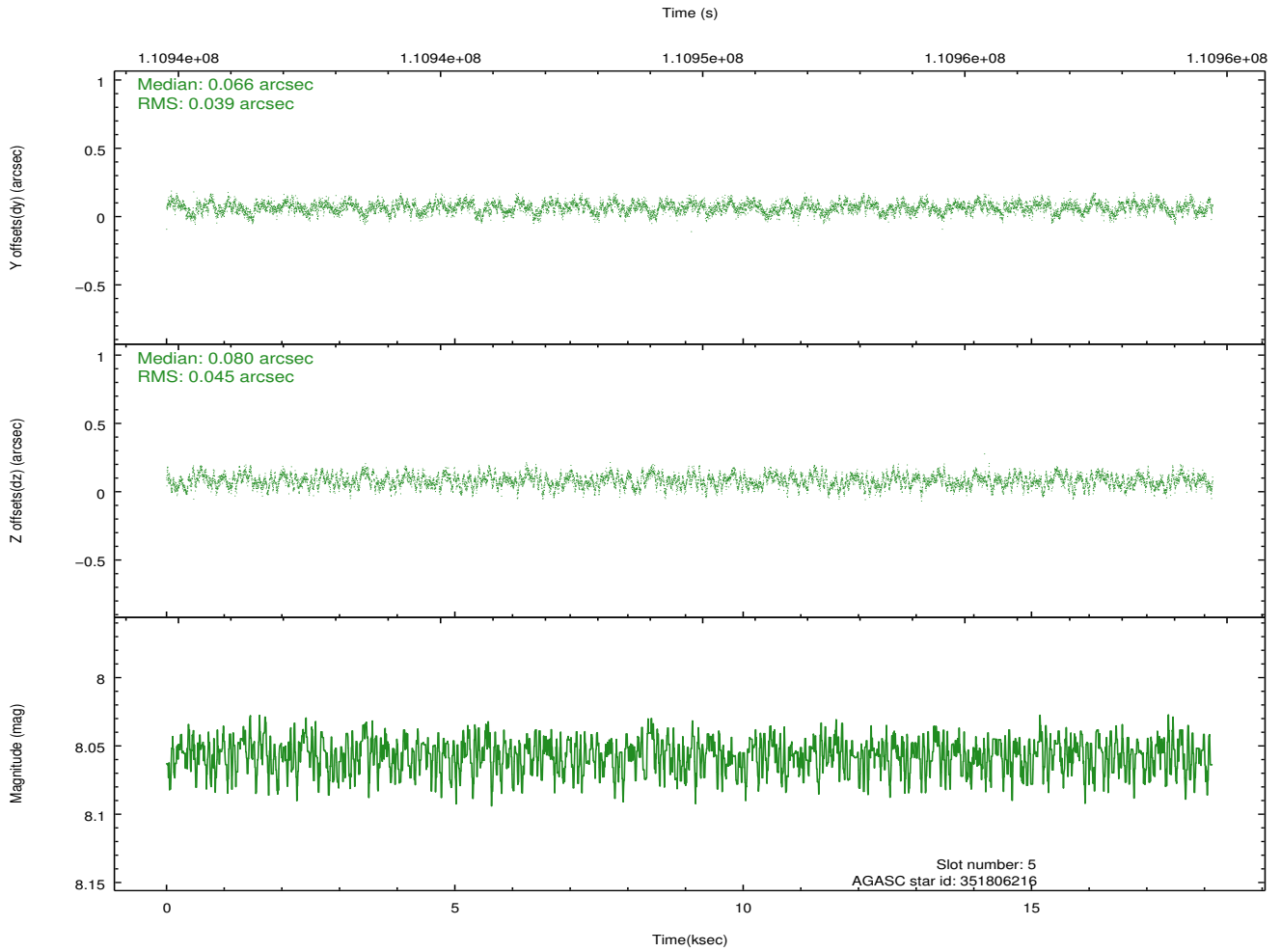
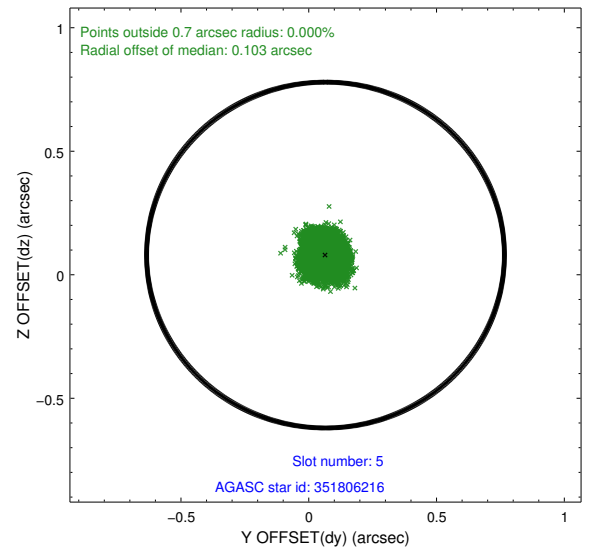
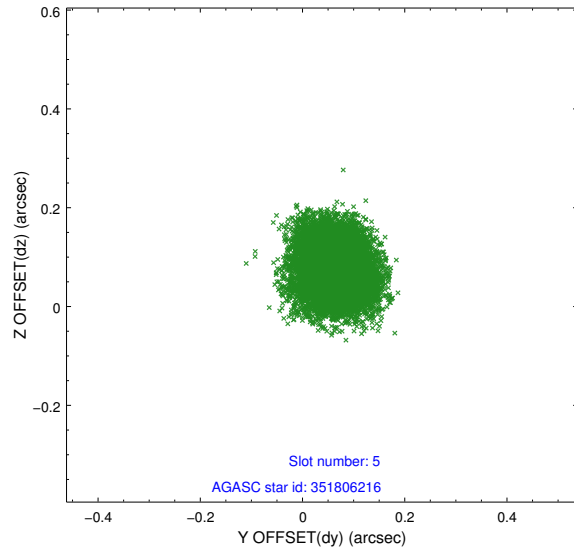
2.4.1 Slot 3



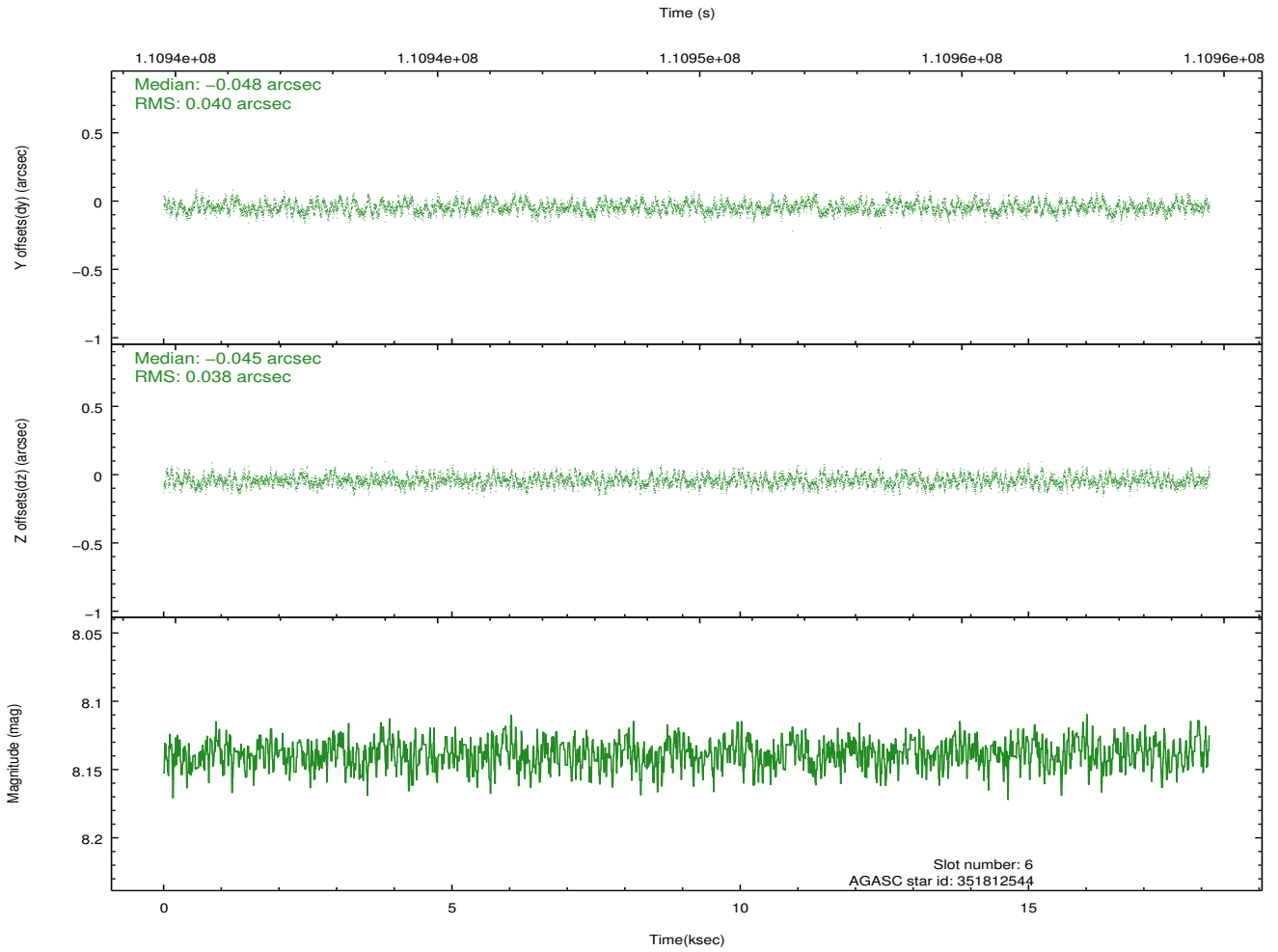
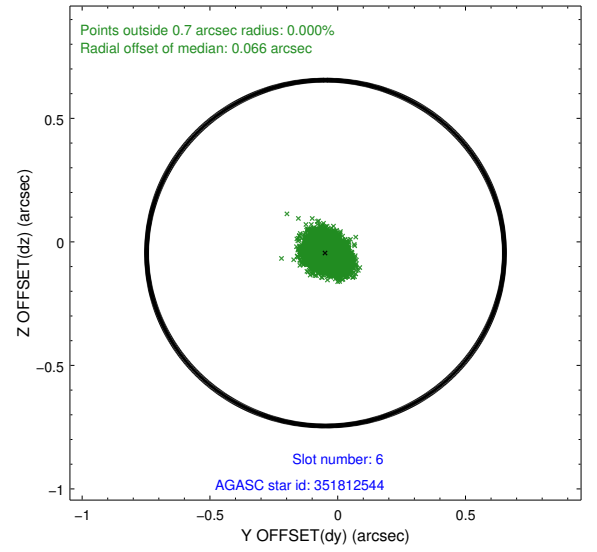
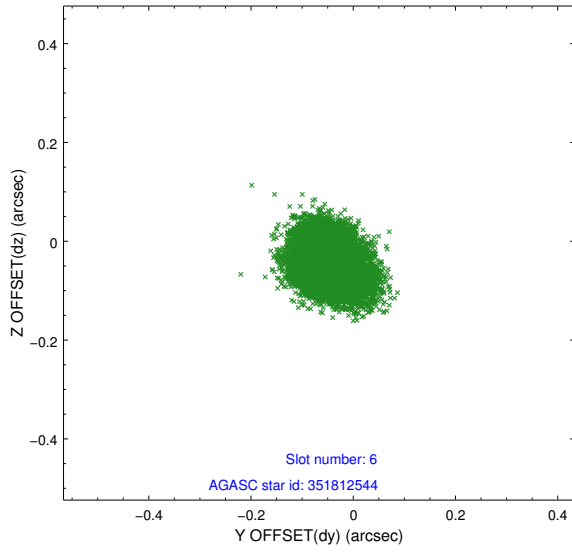
2.4.2 Slot 4



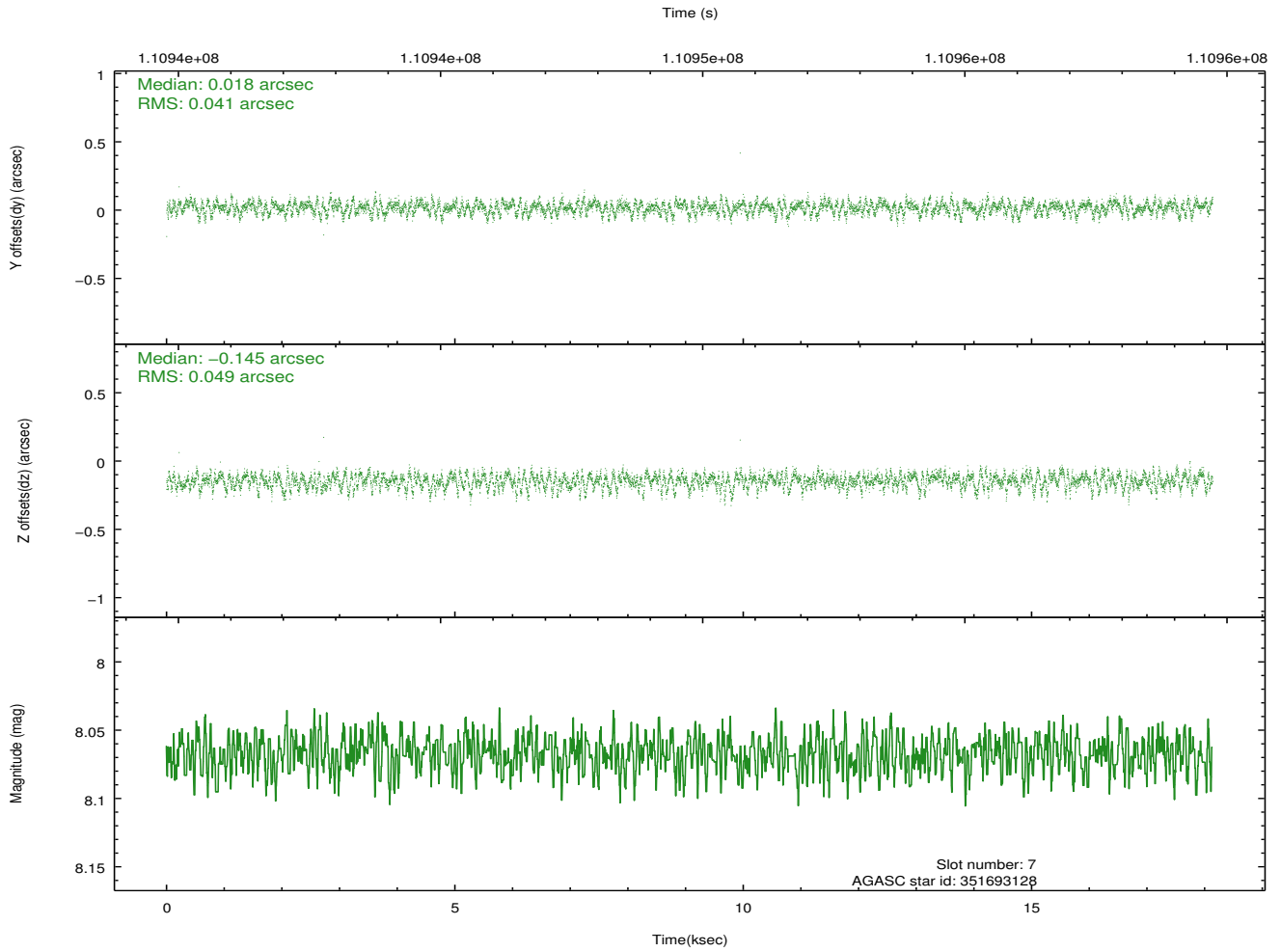
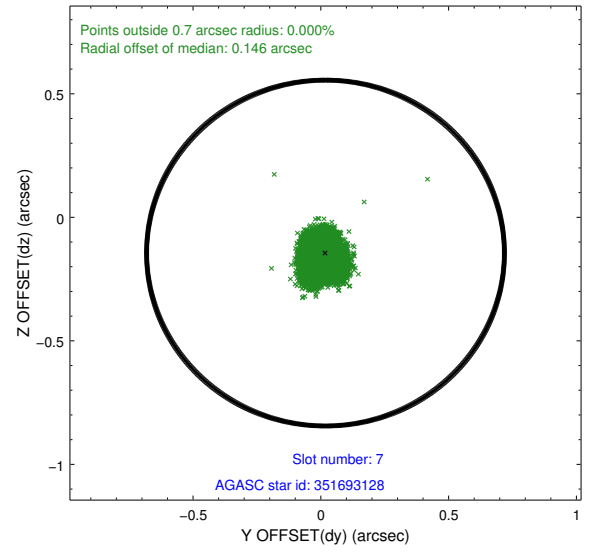
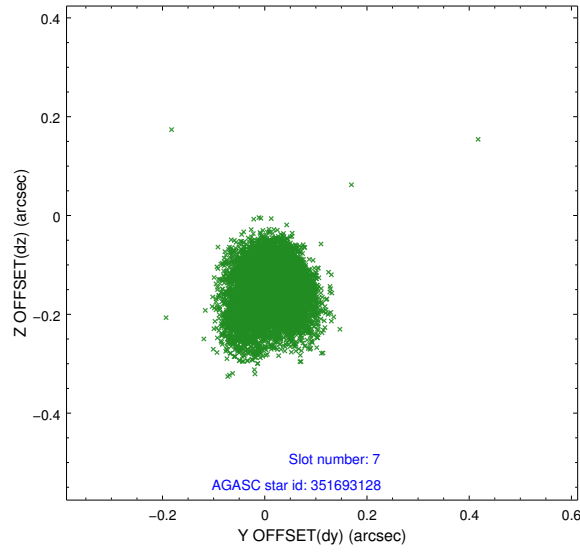
2.4.3 Slot 5



2.4.4 Slot 6

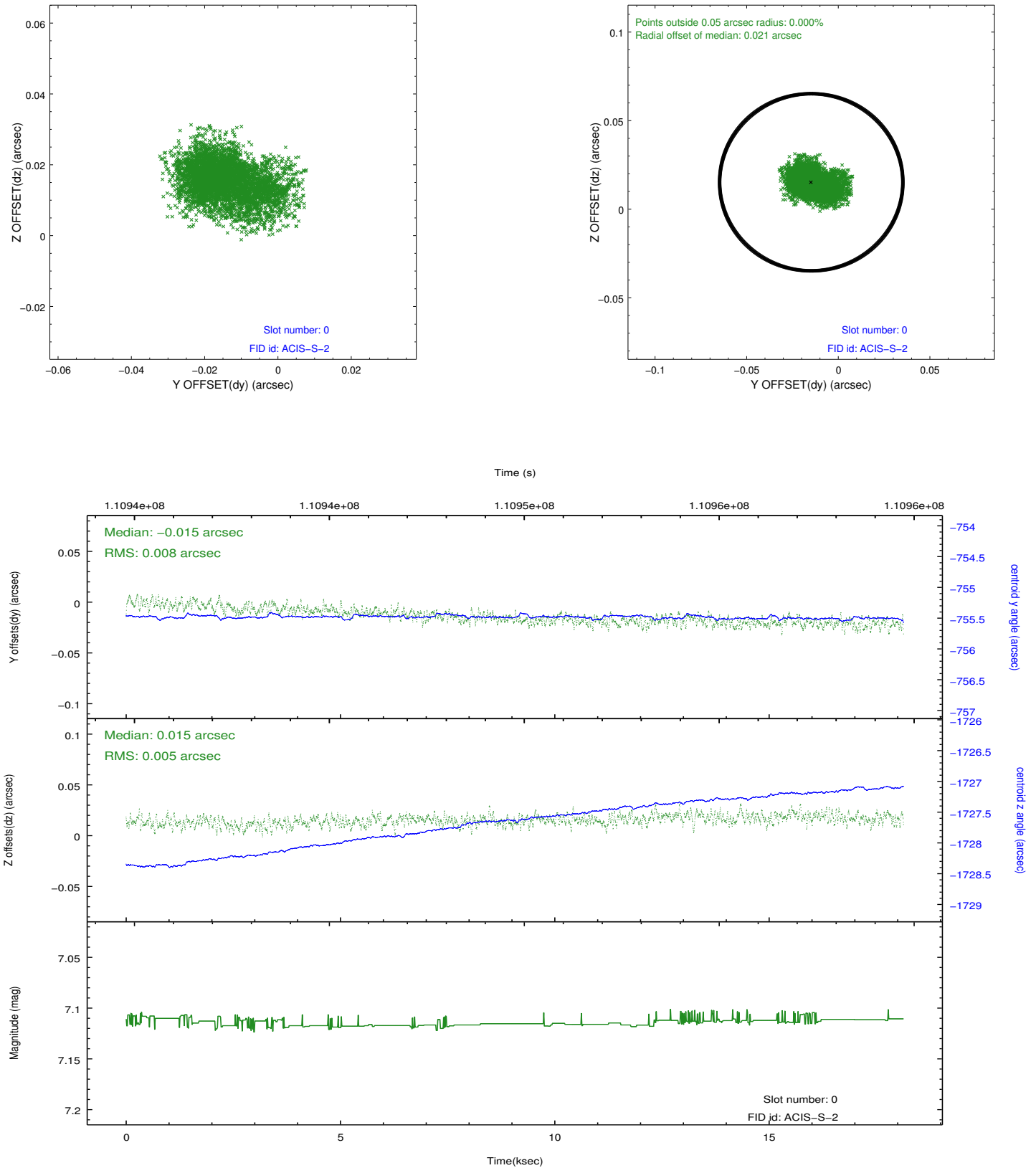


2.4.5 Slot 7

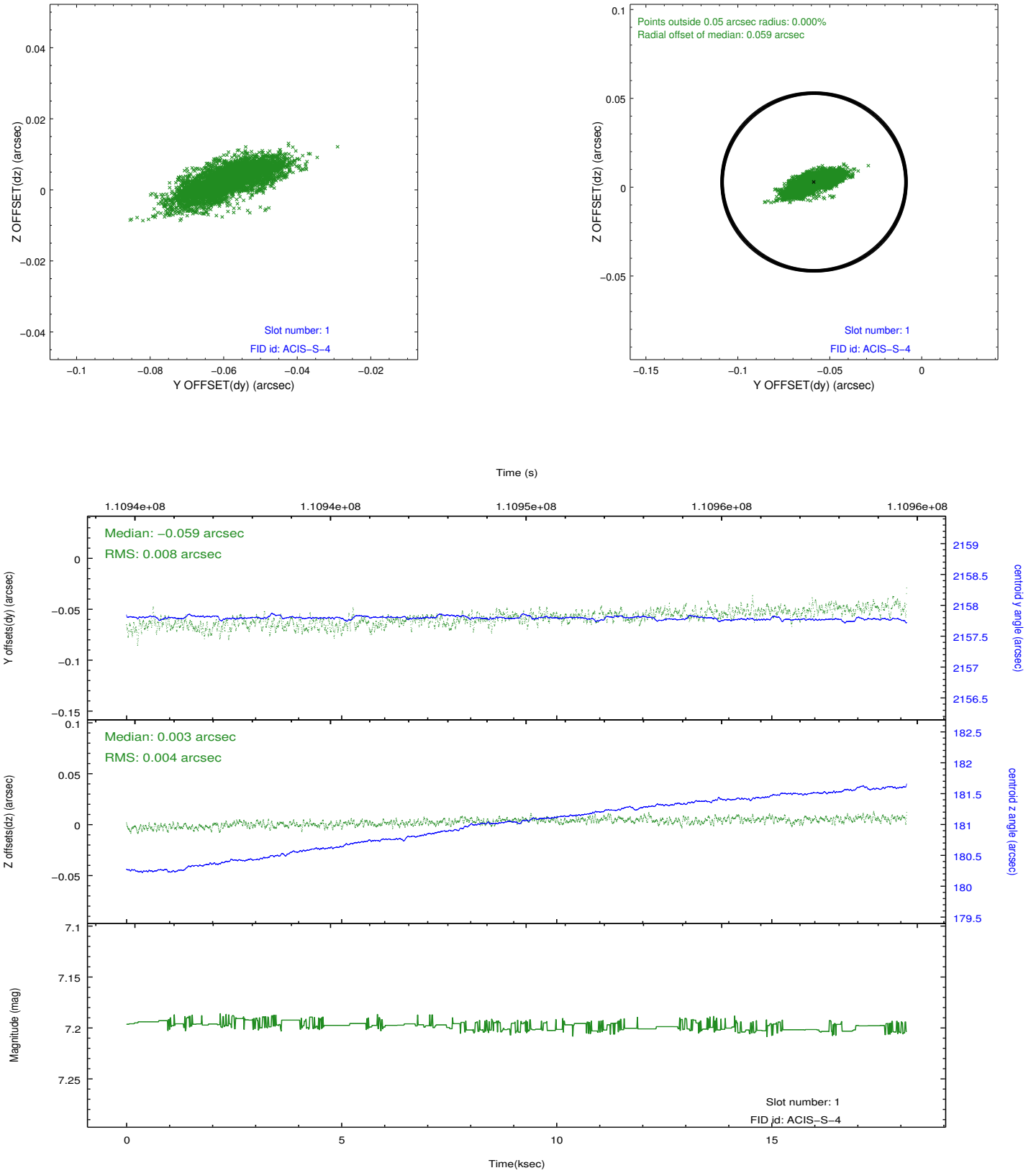


2.5 FID Slots

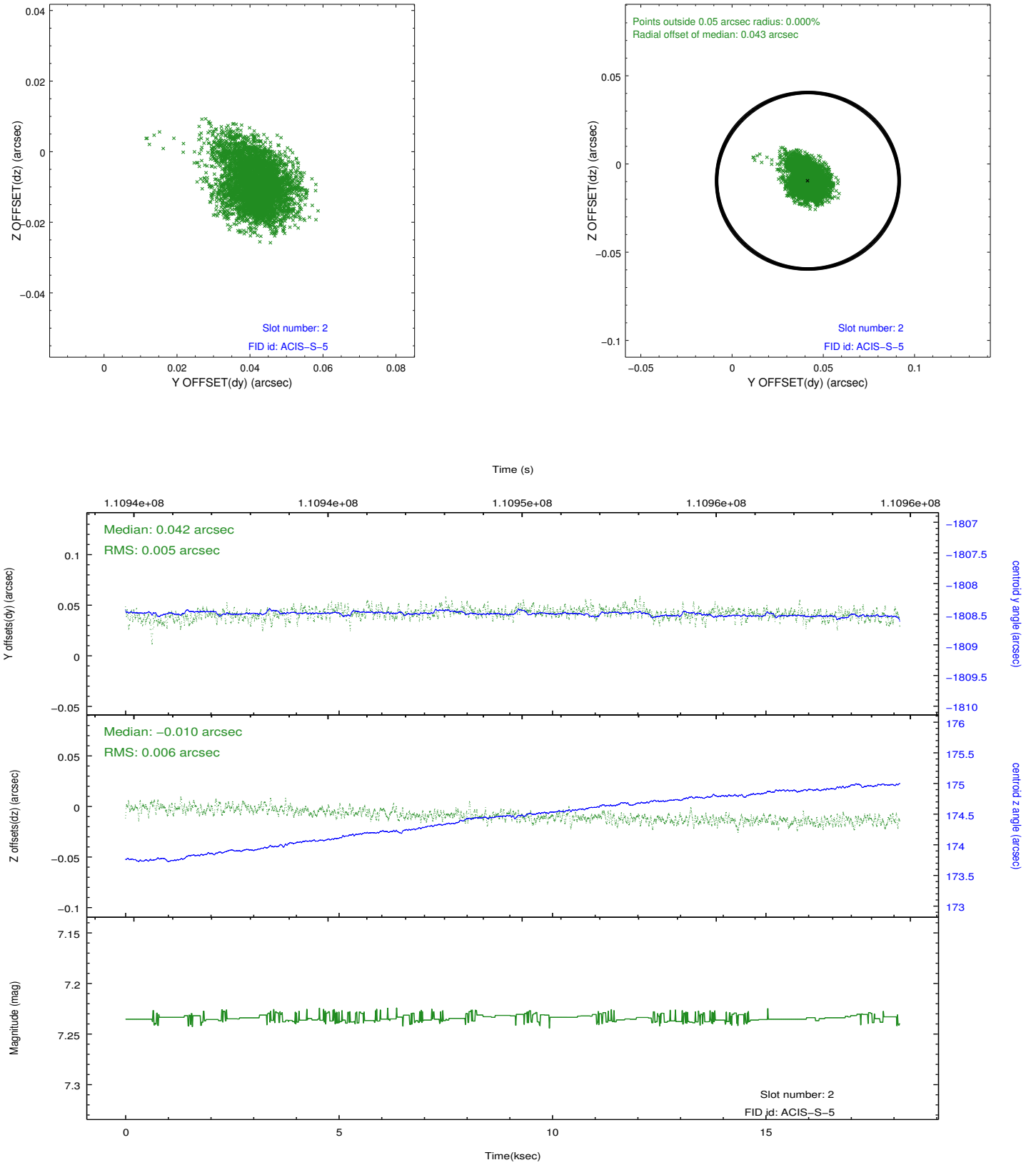
2.5.1 Slot 0



2.5.2 Slot 1



2.5.3 Slot 2



A Summary

A.1 Status

V&V Scientist	Beth Sundheim
V&V Date (YYYY-MM-DD)	2012.09.24
V&V Edition	1
V&V Disposition and Status	OK
V&V Charge Time	18.06

A.2 Comments