

V&V Reference Report

L2 ASCDS Version : 8.4.4

Observation 10307 - L2 Version 2
Chandra X-Ray Center

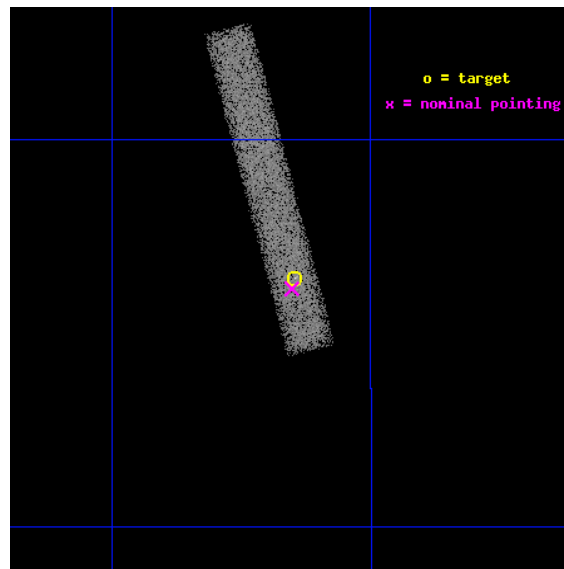
L2 Processing Date : May 30 2012

Contents

1	Front	2
2	OBI	3
2.1	OBI	3
2.1.1	Images	3
2.1.2	Bias	3
2.1.3	Parameters	4
2.1.4	Events	4
2.2	Compared Parameters	5
2.3	Aspect	6
2.4	Star Slots	9
2.4.1	Slot 3	9
2.4.2	Slot 4	10
2.4.3	Slot 5	11
2.4.4	Slot 6	12
2.4.5	Slot 7	13
2.5	FID Slots	14
2.5.1	Slot 0	14
2.5.2	Slot 1	15
2.5.3	Slot 2	16
A	Summary	17
A.1	Status	17
A.2	Comments	17

1 Front

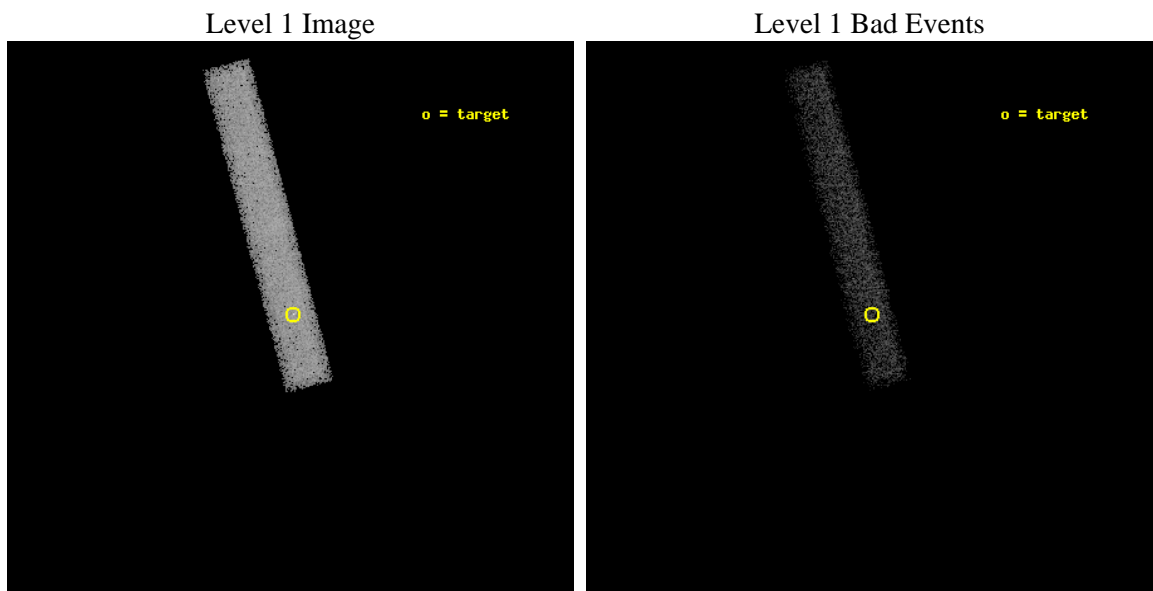
seq_num	701850	Sequence number
obs_id	10307	Observation id
title	Jets at Intermediate Redshifts: Shedding Light on Emission Mechanisms and Physics	Proposal title
observer	Dr. Rita Sambruna	Principal investigator
object	0730+257	Source name
dtcycle	0	
cycle	P	events from which exps? Prim/Second/Both
ra_targ	113.286667	Observer's specified target RA [deg]
dec_targ	25.606944	Observer's specified target Dec [deg]
ra_nom	113.28824812807	Nominal RA [deg]
dec_nom	25.602287490537	Nominal Dec [deg]
roll_nom	255.18060350587	Nominal Roll [deg]
revision	2	Processing version of data
ontime	22174.398678303	Sum of GTIs [s]
livetime	20111.009140489	Livetime [s]
ontime7	22174.398678303	Sum of GTIs [s]
l2events	19364	Number of level 2 events



2 OBI

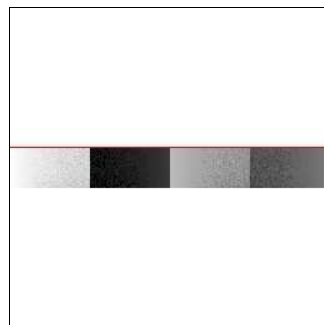
2.1 OBI

2.1.1 Images



2.1.2 Bias

Chip 7



2.1.3 Parameters

obi_num	0	Obi number	sched_exp_time	22000.000000	[s] Scheduled observation exposure time
ascdsver	8.4.4	Processing system revision	ontime	22174.398678303	Sum of GTIs [s]
caldsver	4.4.9	 	ontime7	22174.398678303	Sum of GTIs [s]
date	2012-05-30T23:44:58	Date and time of file creation	l1events	45321	Number of level 1 events
revision	2	Processing version of data			

2.1.4 Events

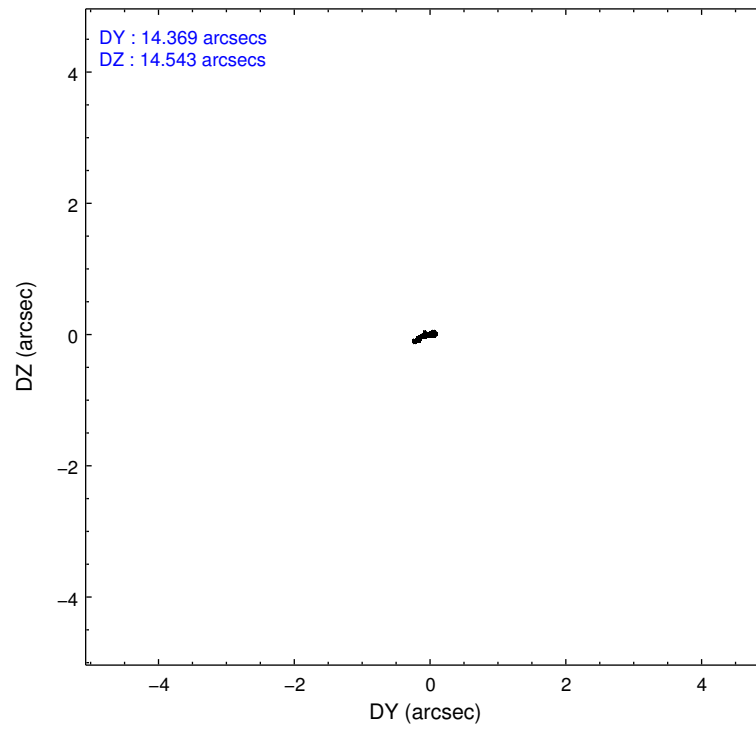
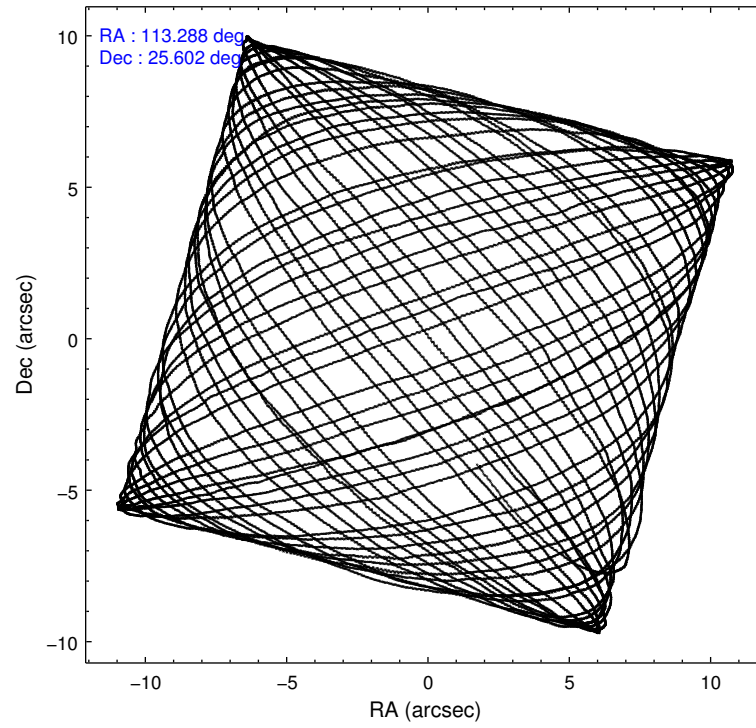
	ccd 7
level 1 events	45321
rejected events	25192
rejected %	55%

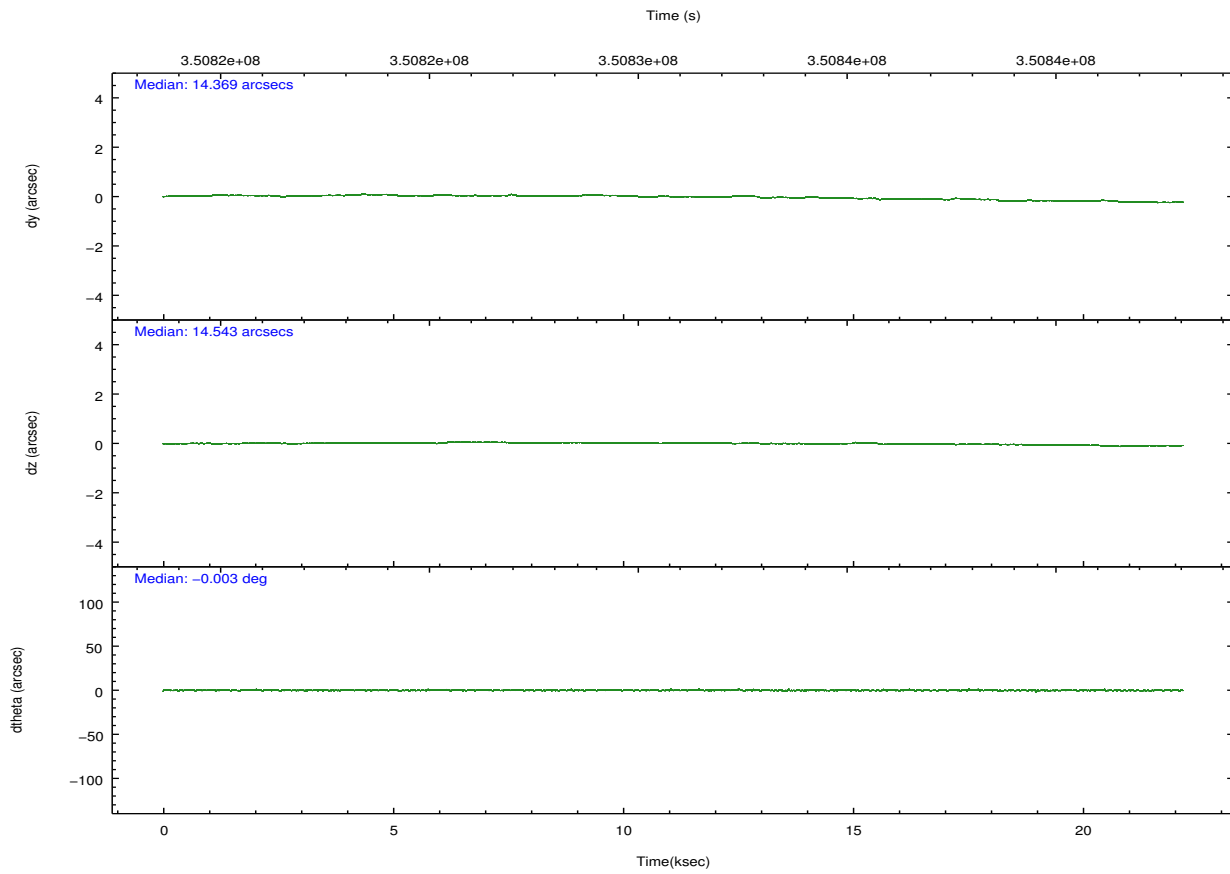
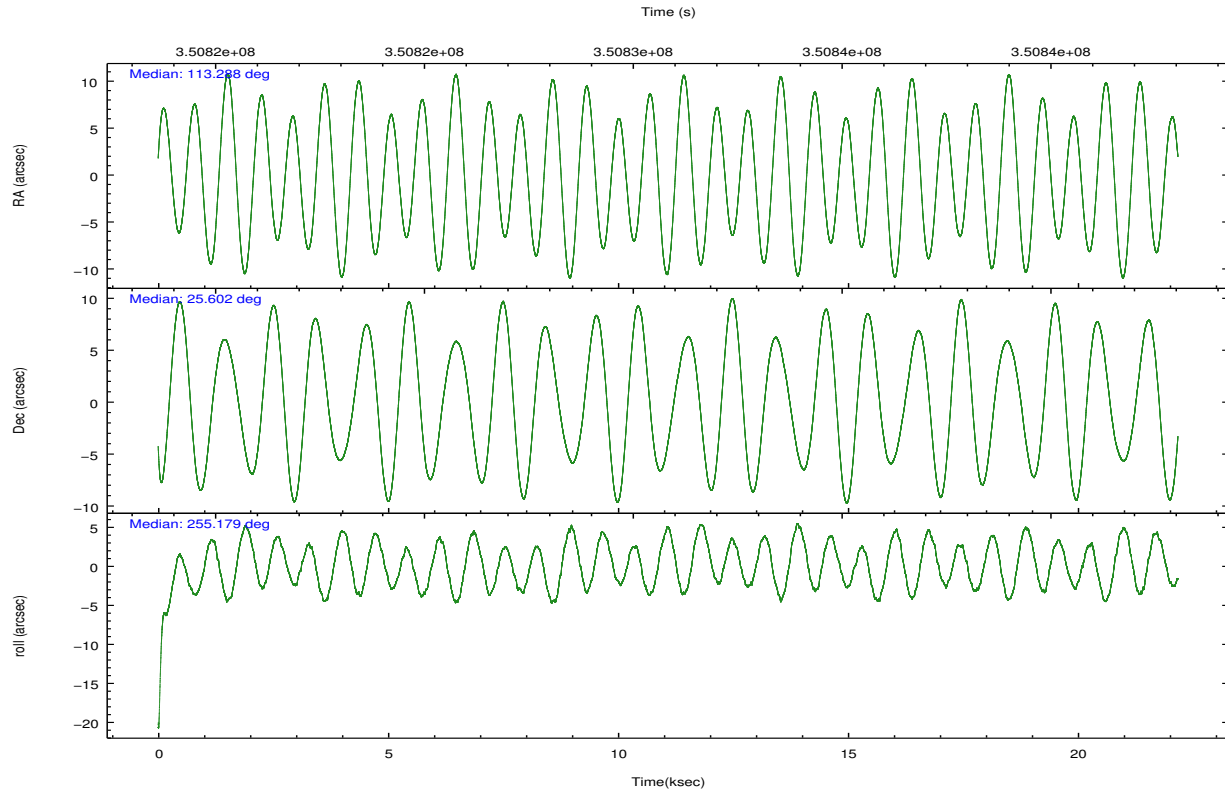
	ccd 7
grade 0 events	2116
	4%
grade 1 events	60
	0%
grade 2 events	4026
	8%
grade 3 events	2585
	5%
grade 4 events	2508
	5%
grade 5 events	4187
	9%
grade 6 events	9685
	21%
grade 7 events	20154
	44%

2.2 Compared Parameters

Parameter	Planned	Actual	Parameter	Planned	Actual
Instrument	ACIS	ACIS	Obspar format version number	7	7
Detector	ACIS-7	ACIS-7	Obspar file type	PREDICTED	ACTUAL
Grating	NONE	NONE	Obspar update status	NONE	UPDATED
Data mode	FAINT	FAINT	Number of optional ACIS chips dropped	0	0
Observation mode	POINTING	POINTING	On-chip summing requested	N	N
[deg] Pointing RA	113.279888	113.2882481280686	Subarray requested	CUSTOM	1/8
[deg] Pointing Dec	25.628593	25.60228749053656	Subarray start row	449	449
[deg] Pointing Roll	255.027595	255.180603505869	Subarray row count	128	128
[mm] SIM focus pos	-0.684267	-0.6828225247311905	Alternating exposures requested	N	N
[mm] SIM defocus	0	0.001444936568705701	[s] Primary exposure time	0.000000	0.4
[mm] SIM translation stage pos	-190.132523	-190.1400660498719			
[mm] SIM translation stage offset	0	0.00754346686406393			
[s] Observation start time (MET)	350819907.184000	350818782.80409			
Observation start date	2009-02-12T09:57:21	2009-02-12T09:39:42			
[s] Observation end time (MET)	350841907.184000	350842776.51778			
Observation end date	2009-02-12T16:04:01	2009-02-12T16:19:36			
Read mode	TIMED	TIMED			

2.3 Aspect



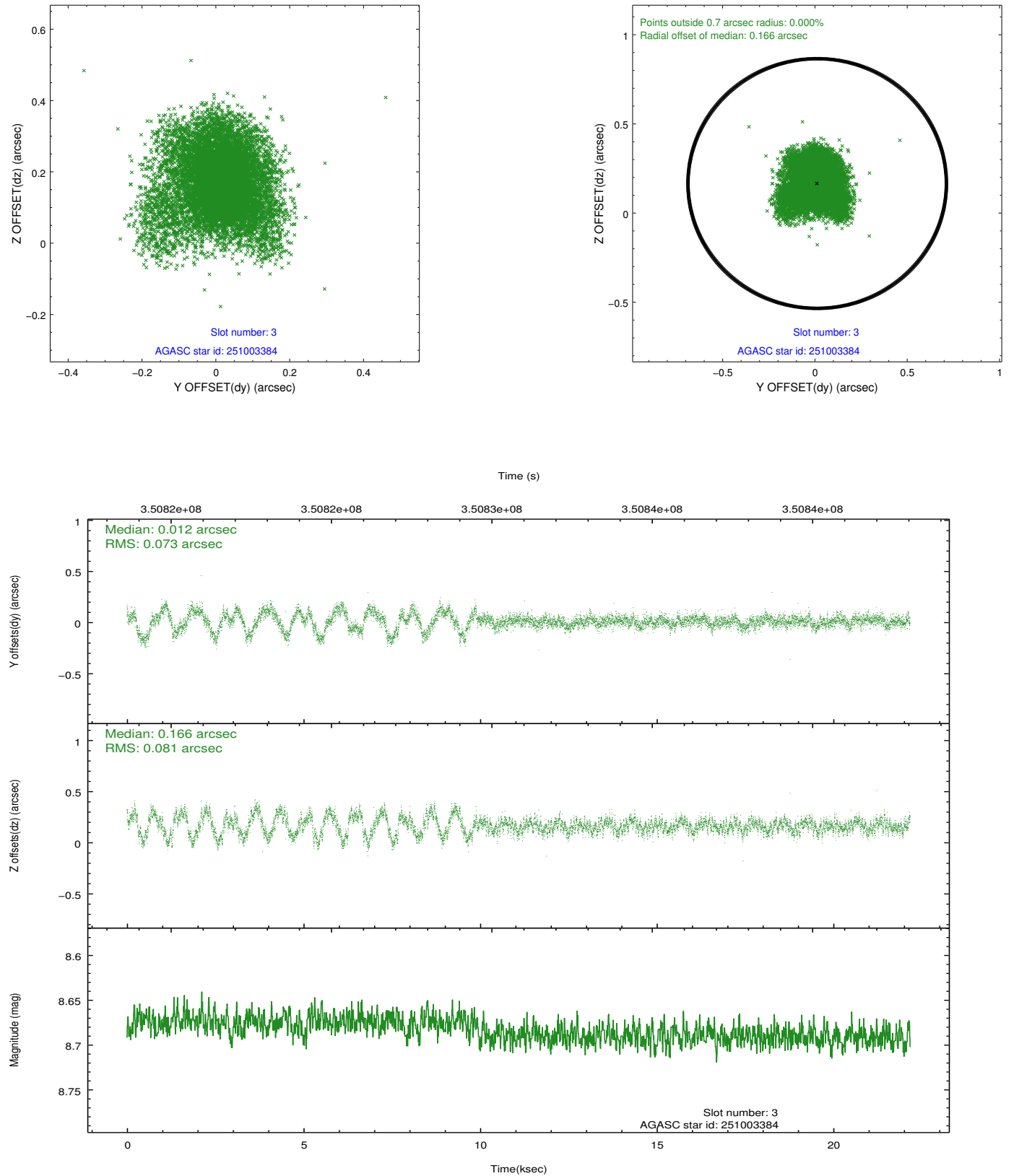


Slot Statistics

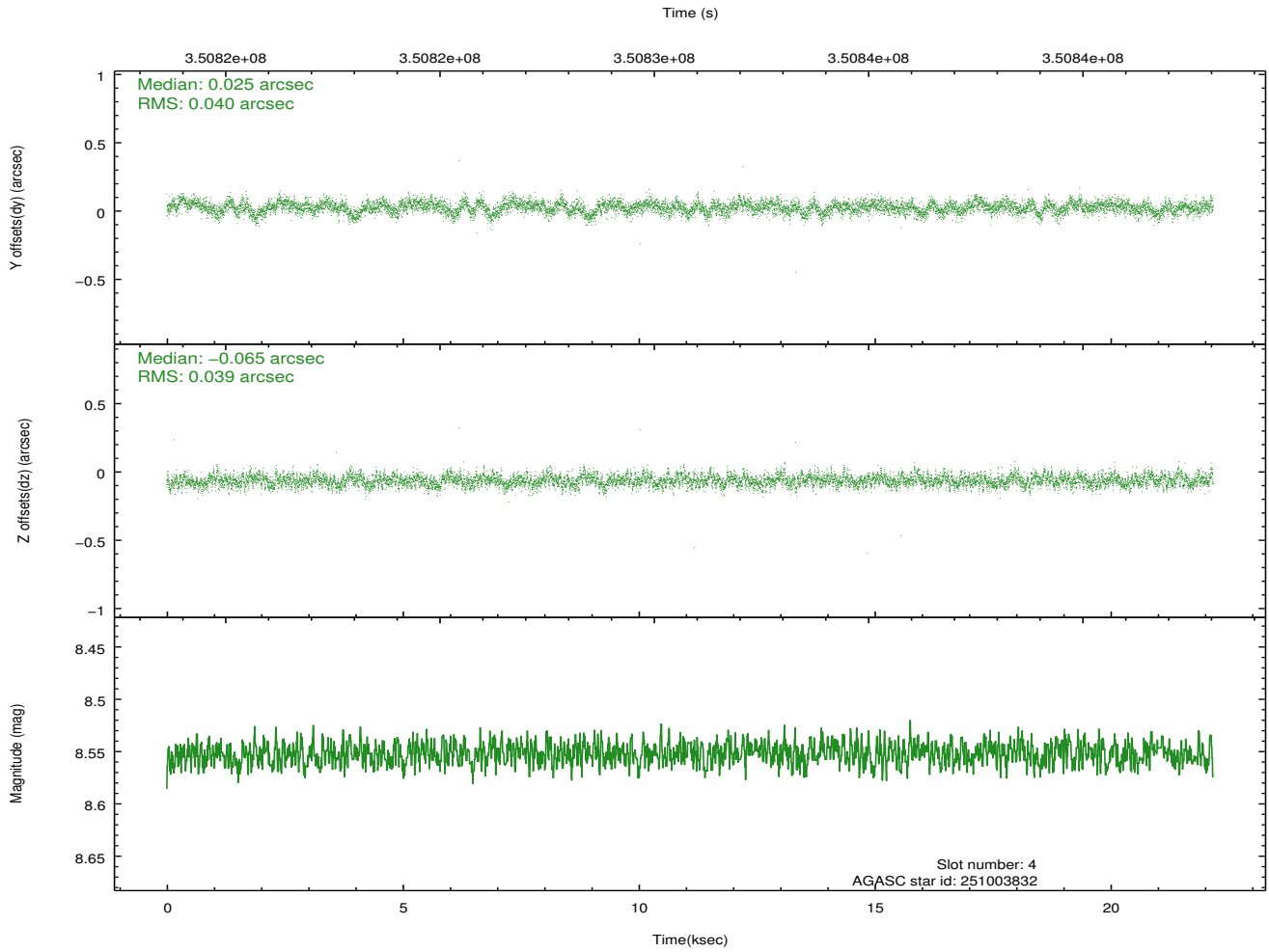
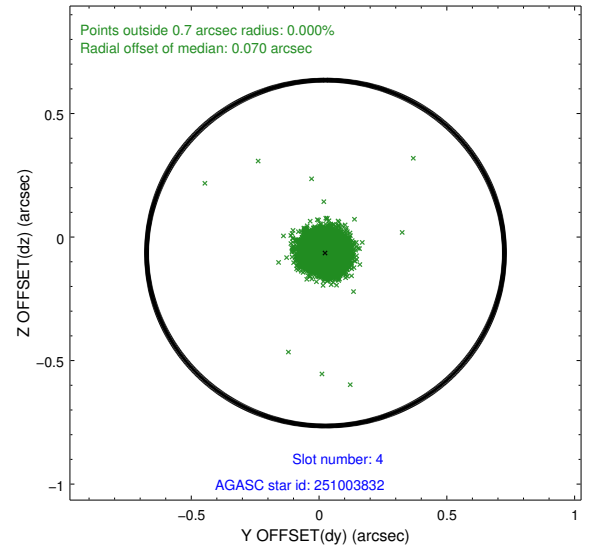
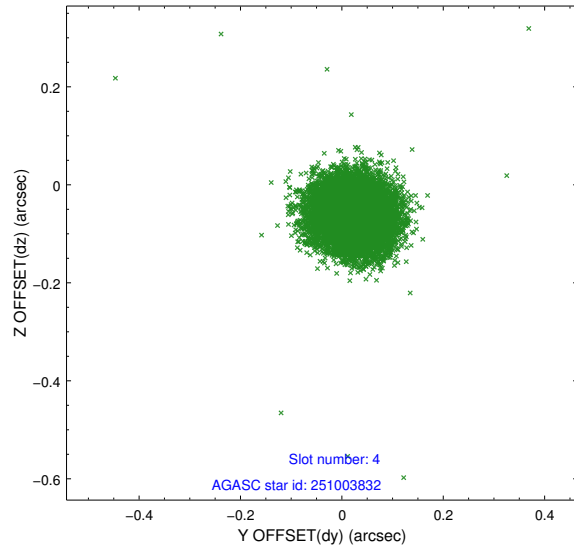
slot	status	id	mag	n_pts	med_dy	med_dz	dr1	dr2	ra	dec	mean_y	mean_z
0	FID	ACIS-S-2	6.98	5408	-0.116	-0.066	0.006	0.010	0.000000	0.000000	-767.42	-1735.95
1	FID	ACIS-S-4	7.07	5408	0.122	0.069	0.006	0.011	0.000000	0.000000	2146.05	172.47
2	FID	ACIS-S-6	7.21	5408	-0.034	0.004	0.007	0.011	0.000000	0.000000	394.87	809.99
3	GUIDE	251003384	8.68	10811	0.012	0.166	0.112	0.202	113.302949	26.113793	-1706.54	-379.05
4	GUIDE	251003832	8.55	10805	0.025	-0.065	0.058	0.095	113.168387	26.174476	-1805.54	-855.84
5	GUIDE	251016952	7.46	10813	0.007	-0.007	0.072	0.112	113.710034	24.954471	1982.32	1984.81
6	GUIDE	251012680	8.72	10806	0.070	0.064	0.074	0.119	113.515593	24.879677	2405.51	1440.38
7	GUIDE	251399328	8.53	10808	-0.112	-0.158	0.072	0.118	112.784115	26.416265	-2329.10	-2277.66

2.4 Star Slots

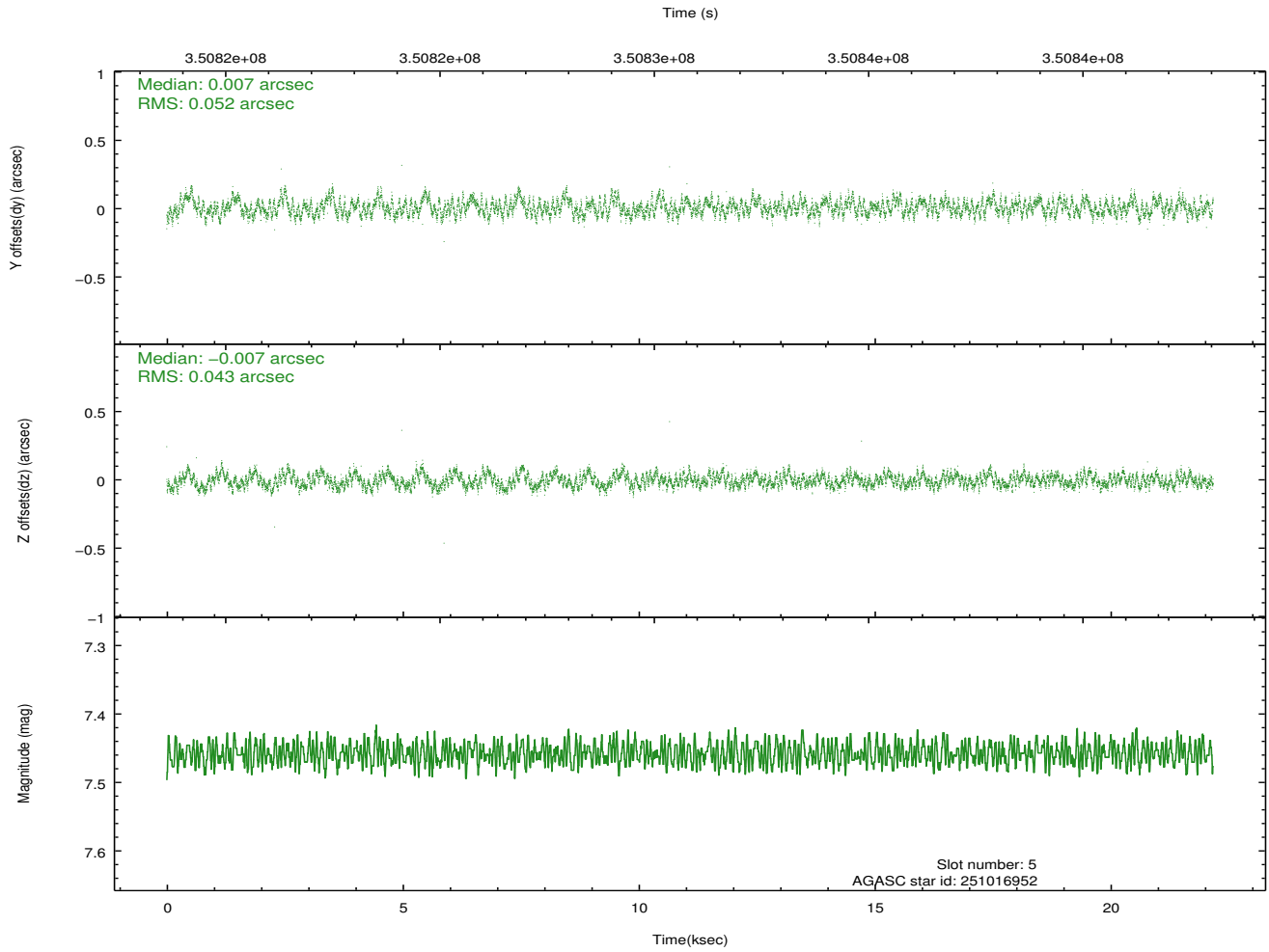
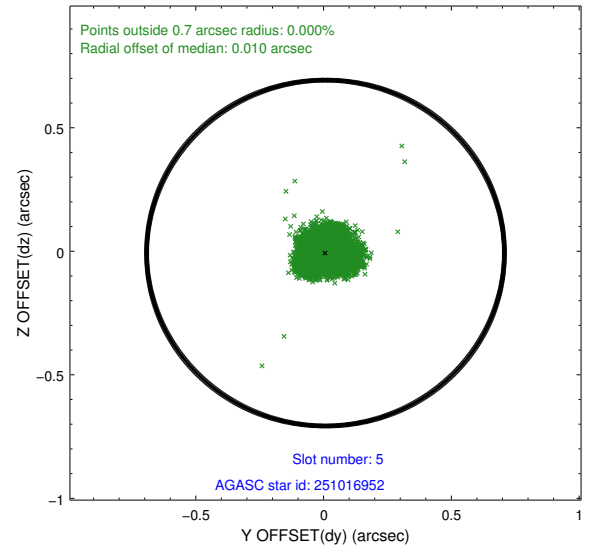
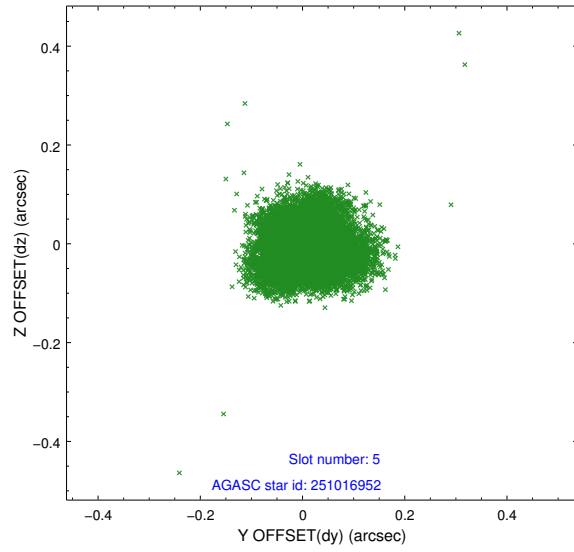
2.4.1 Slot 3



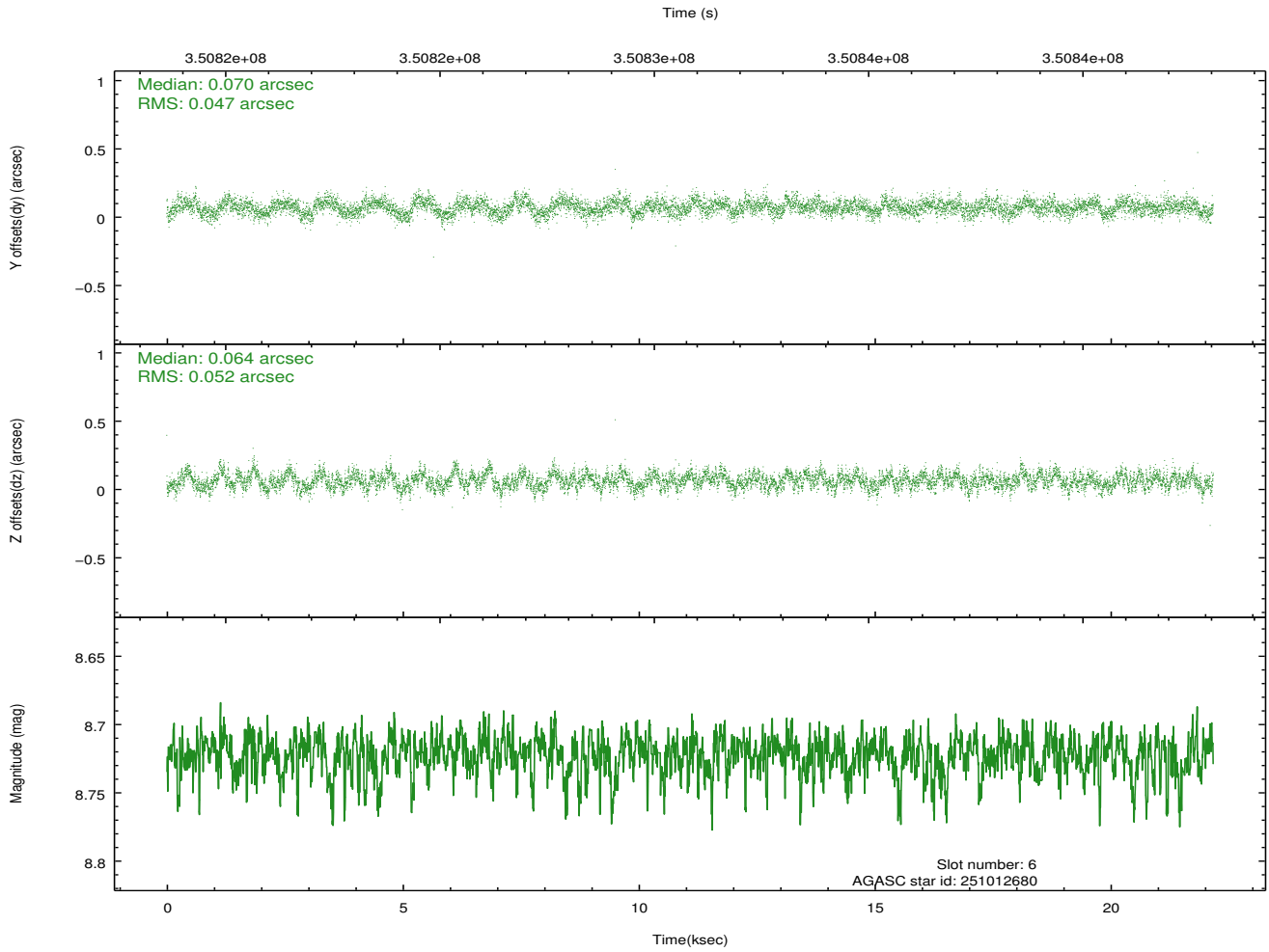
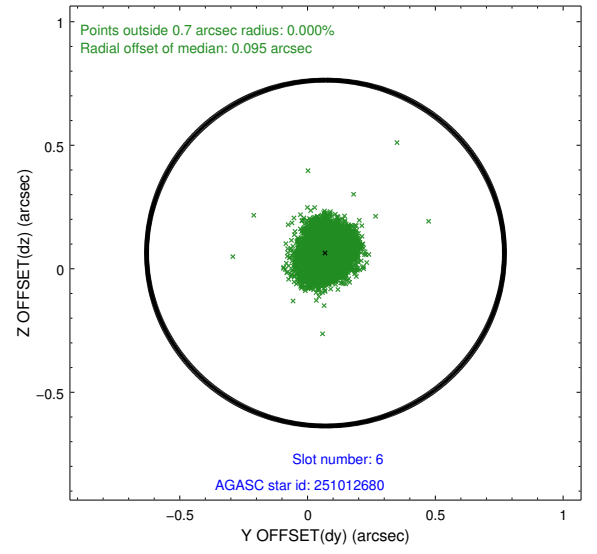
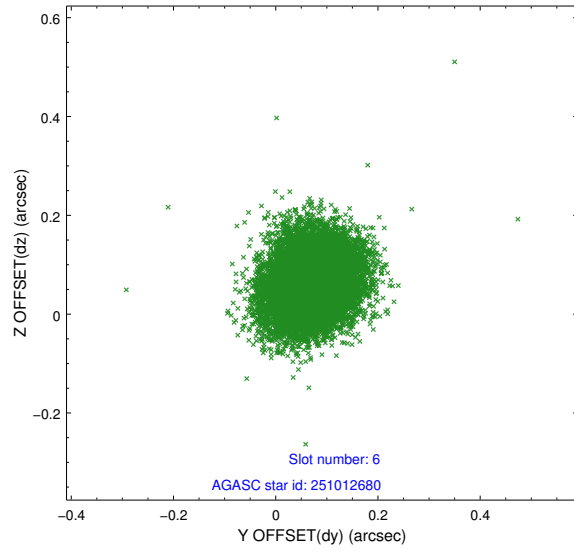
2.4.2 Slot 4



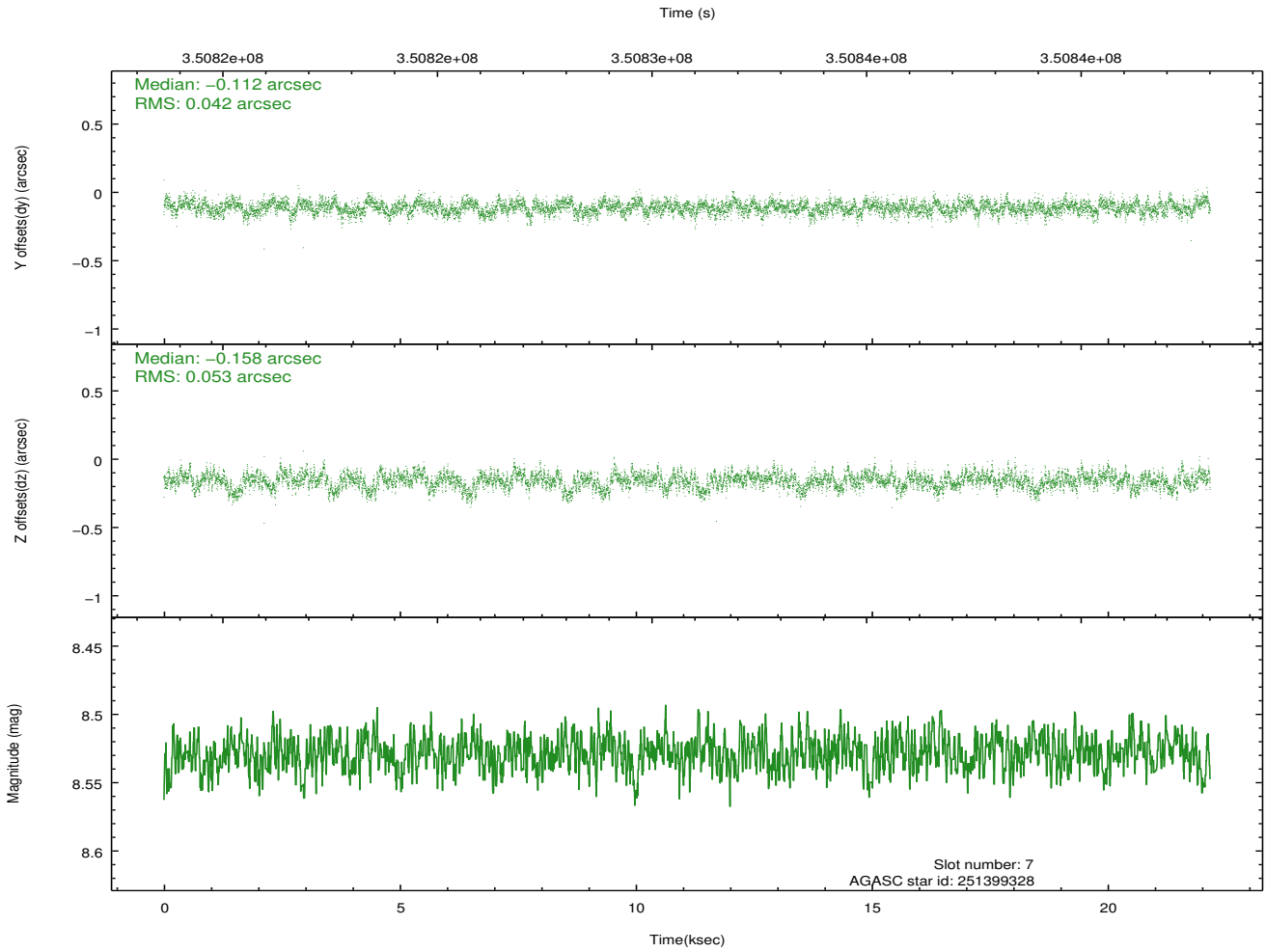
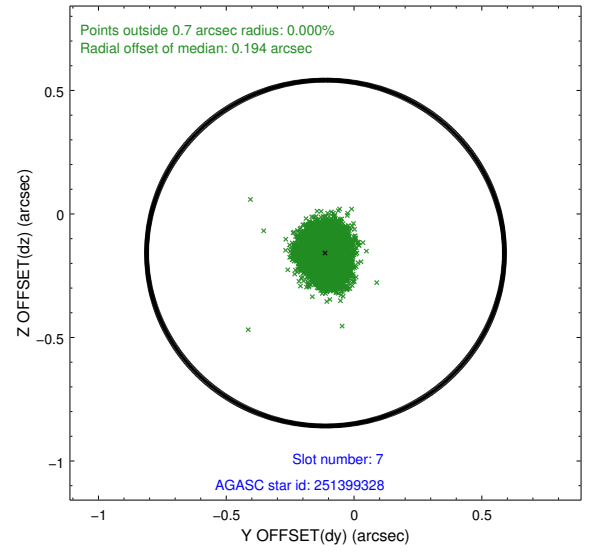
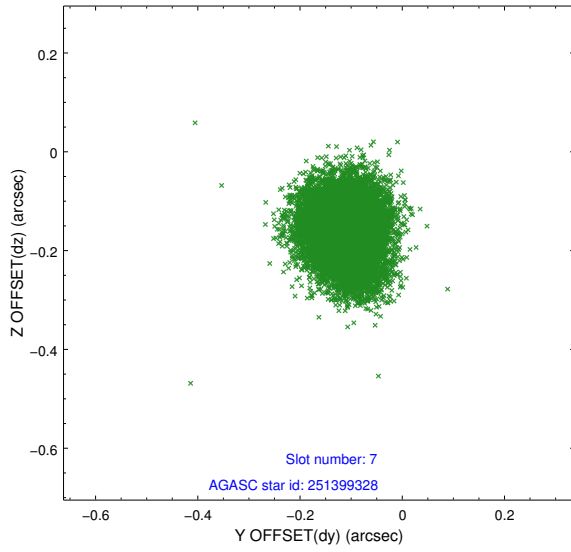
2.4.3 Slot 5



2.4.4 Slot 6

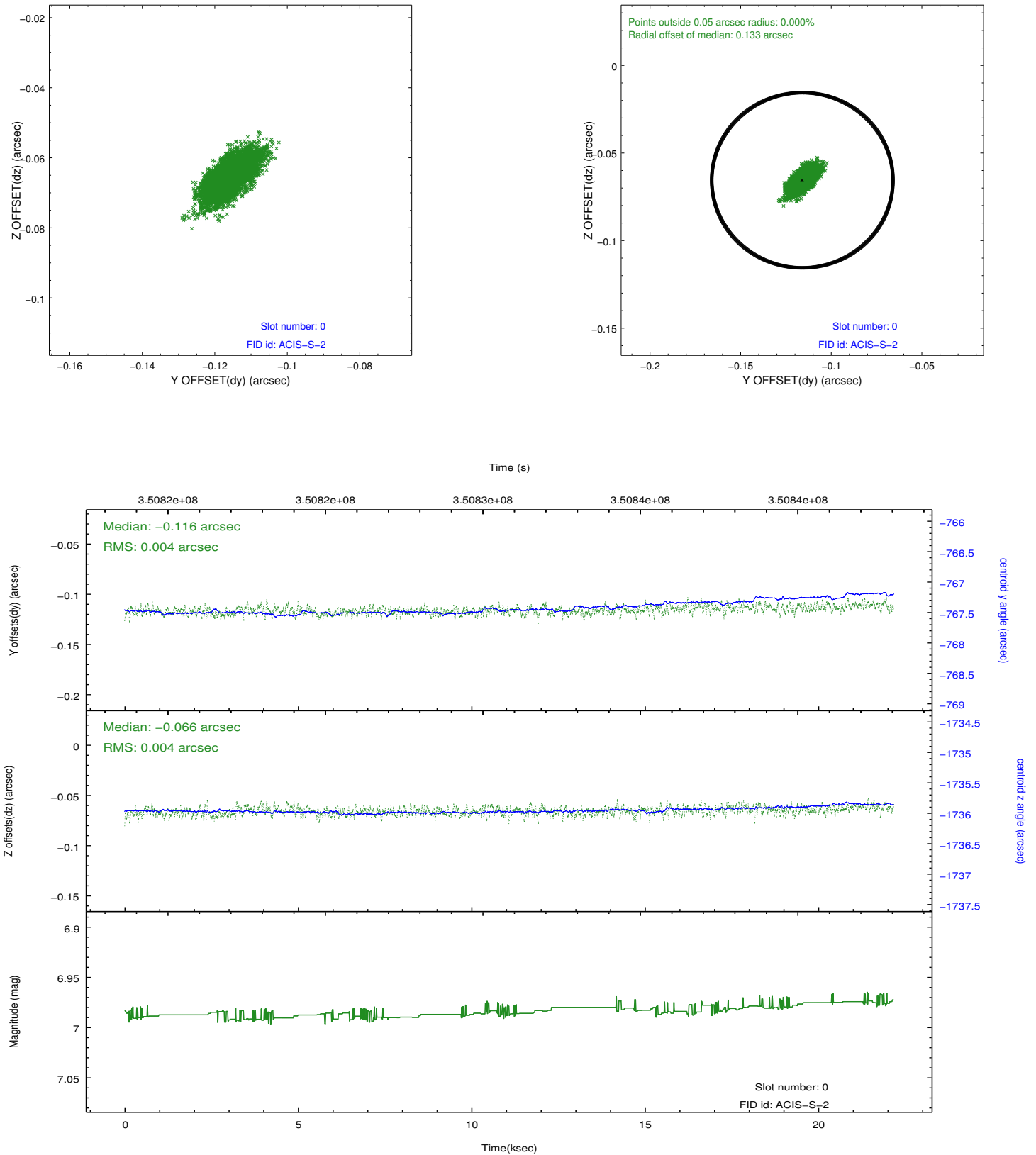


2.4.5 Slot 7

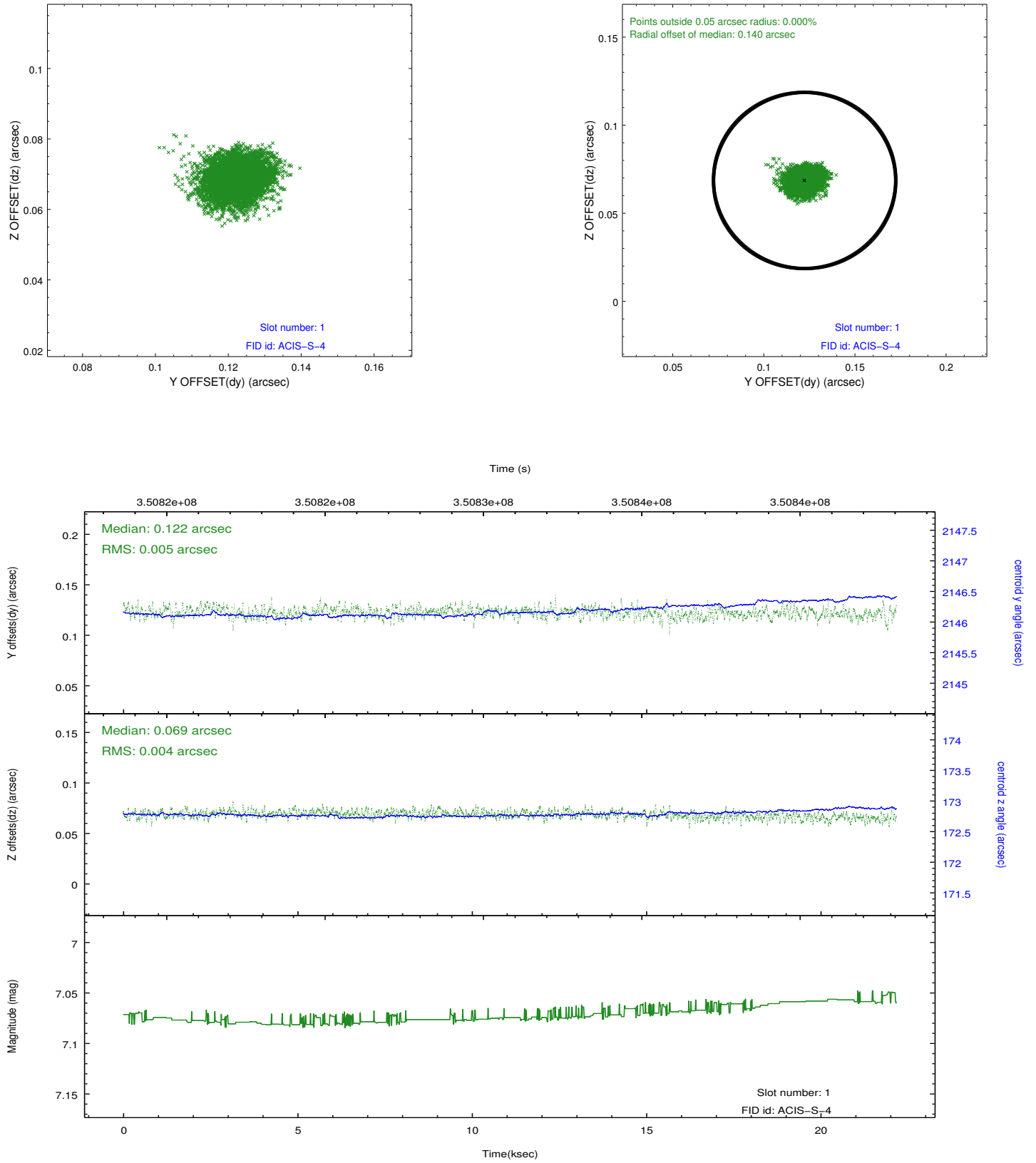


2.5 FID Slots

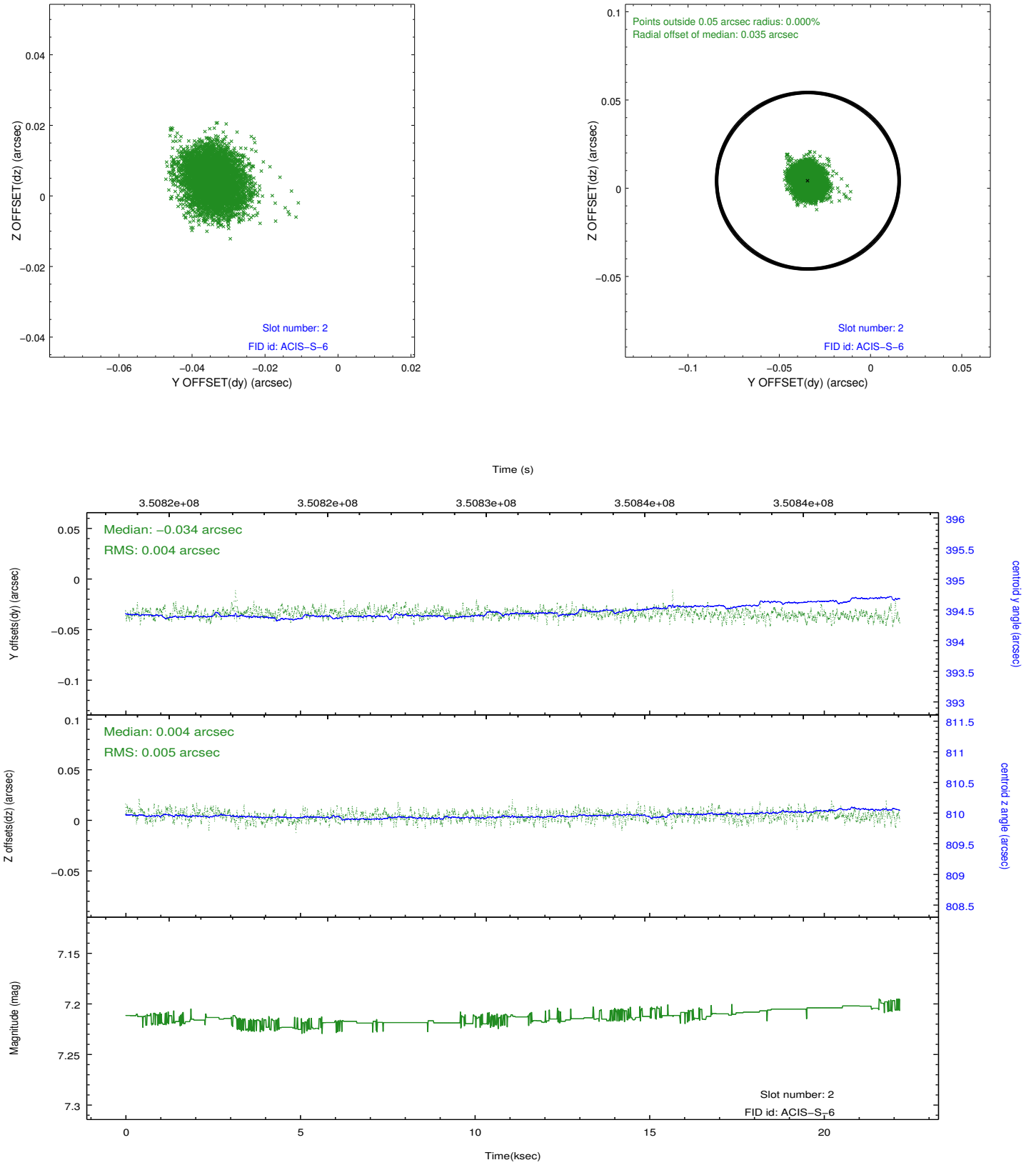
2.5.1 Slot 0



2.5.2 Slot 1



2.5.3 Slot 2



A Summary

A.1 Status

V&V Scientist	Beth Sundheim
V&V Date (YYYY-MM-DD)	2012.06.05
V&V Edition	1
V&V Disposition and Status	OK
V&V Charge Time	22.1743986

A.2 Comments

Joint proposal with HST.