

V&V Reference Report

L2 ASCDS Version : 8.4.4

Observation 10297 - L2 Version 2
Chandra X-Ray Center

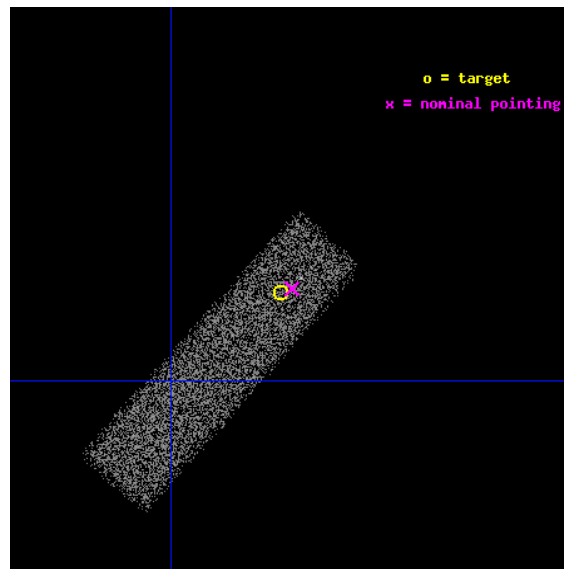
L2 Processing Date : May 31 2012

Contents

1	Front	2
2	OBI	3
2.1	OBI	3
2.1.1	Images	3
2.1.2	Bias	3
2.1.3	Parameters	4
2.1.4	Events	4
2.2	Compared Parameters	5
2.3	Aspect	6
2.4	Star Slots	9
2.4.1	Slot 3	9
2.4.2	Slot 4	10
2.4.3	Slot 5	11
2.4.4	Slot 6	12
2.4.5	Slot 7	13
2.5	FID Slots	14
2.5.1	Slot 0	14
2.5.2	Slot 1	15
2.5.3	Slot 2	16
A	Summary	17
A.1	Status	17
A.2	Comments	17

1 Front

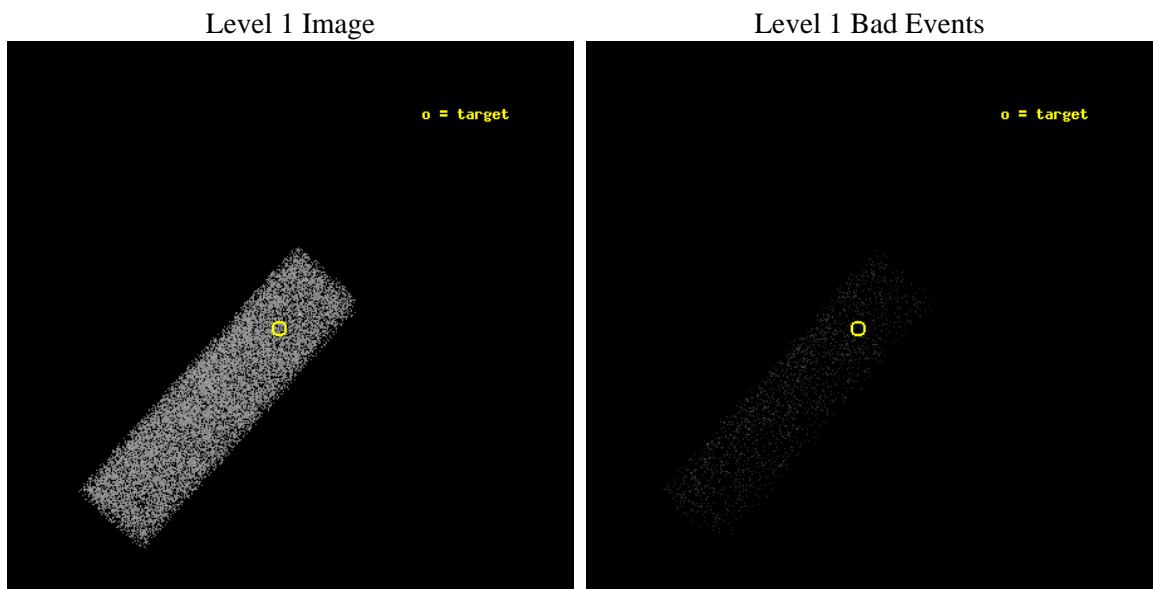
seq_num	701840	Sequence number
obs_id	10297	Observation id
title	Exploratory Chandra observations of low-metallicity AGN candidates	
observer	Prof. Trinh Thuan	Principal investigator
object	J1222+3602	Source name
dtcycle	0	
cycle	P	events from which exps? Prim/Second/Both
ra_targ	185.690417	Observer's specified target RA [deg]
dec_targ	36.038333	Observer's specified target Dec [deg]
ra_nom	185.68465353346	Nominal RA [deg]
dec_nom	36.039668868692	Nominal Dec [deg]
roll_nom	131.96082312226	Nominal Roll [deg]
revision	2	Processing version of data
ontime	11268.800167978	Sum of GTIs [s]
livetime	10718.919592864	Livetime [s]
ontime7	11268.800167978	Sum of GTIs [s]
l2events	11927	Number of level 2 events



2 OBI

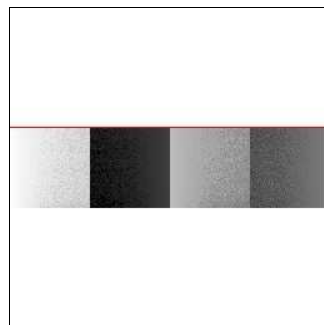
2.1 OBI

2.1.1 Images



2.1.2 Bias

Chip 7



2.1.3 Parameters

obi_num	0	Obi number	sched_exp_time	11100.000000	[s] Scheduled observation exposure time
ascdsver	8.4.4	Processing system revision	ontime	11268.800167978	Sum of GTIs [s]
caldsver	4.4.9	 	ontime7	11268.800167978	Sum of GTIs [s]
date	2012-05-31T14:50:10	Date and time of file creation	l1events	25011	Number of level 1 events
revision	2	Processing version of data			

2.1.4 Events

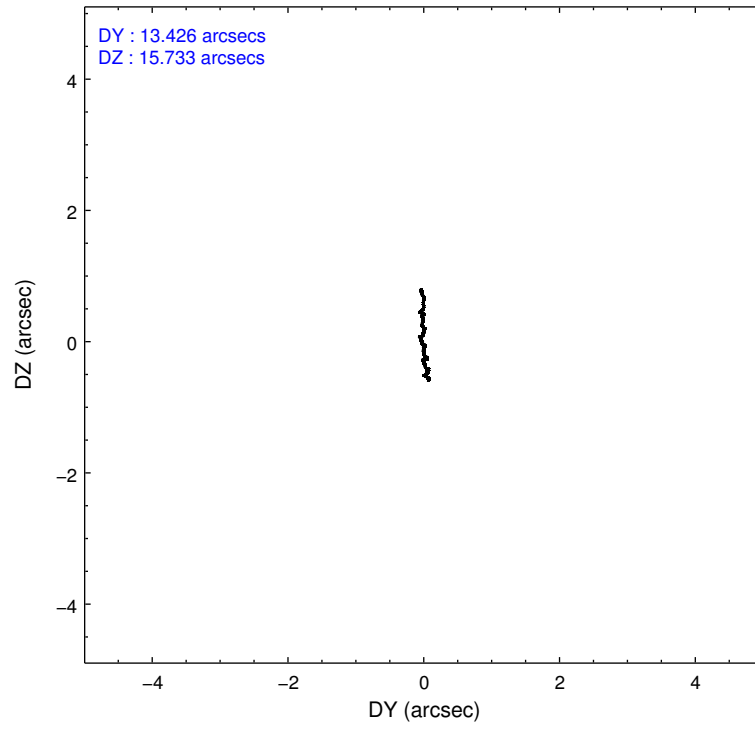
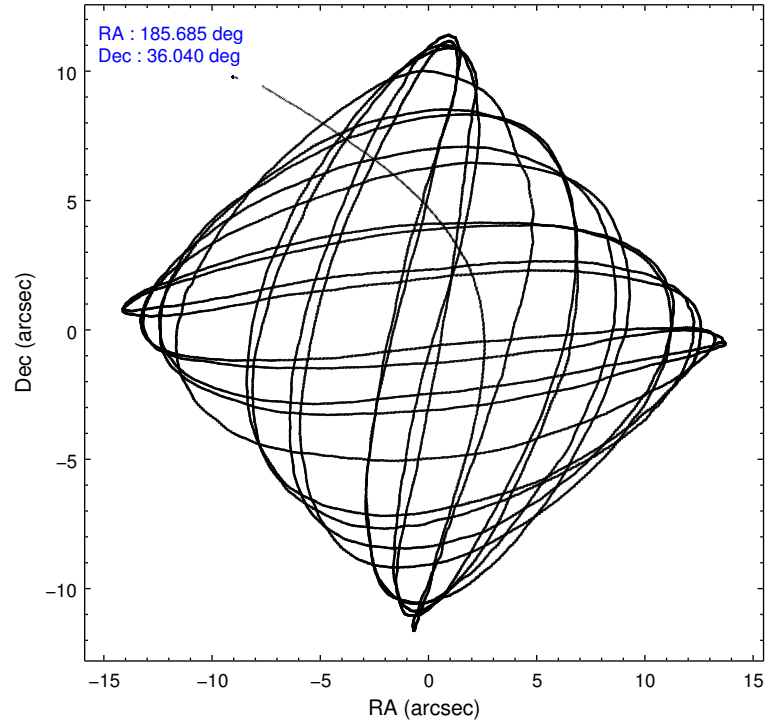
	ccd 7
level 1 events	25011
rejected events	12582
rejected %	50%

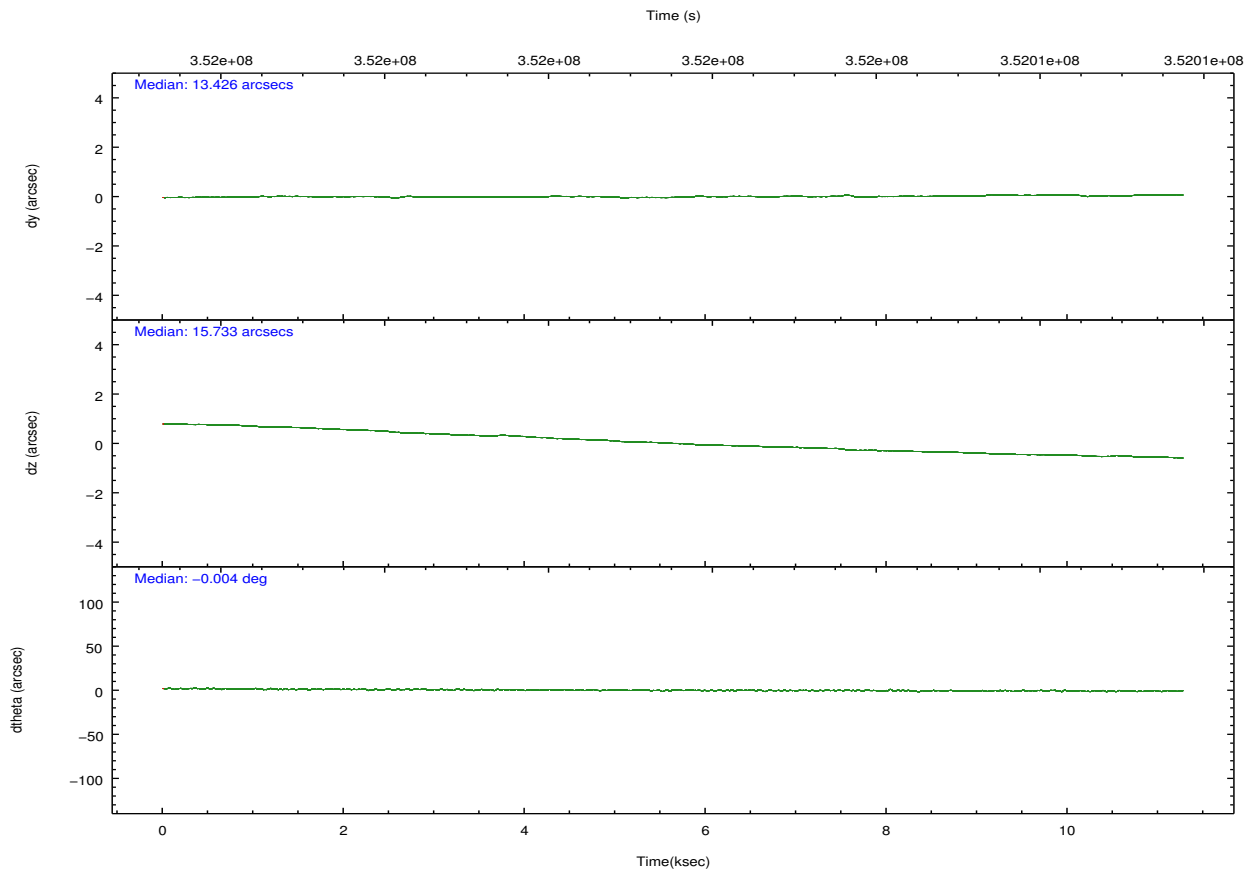
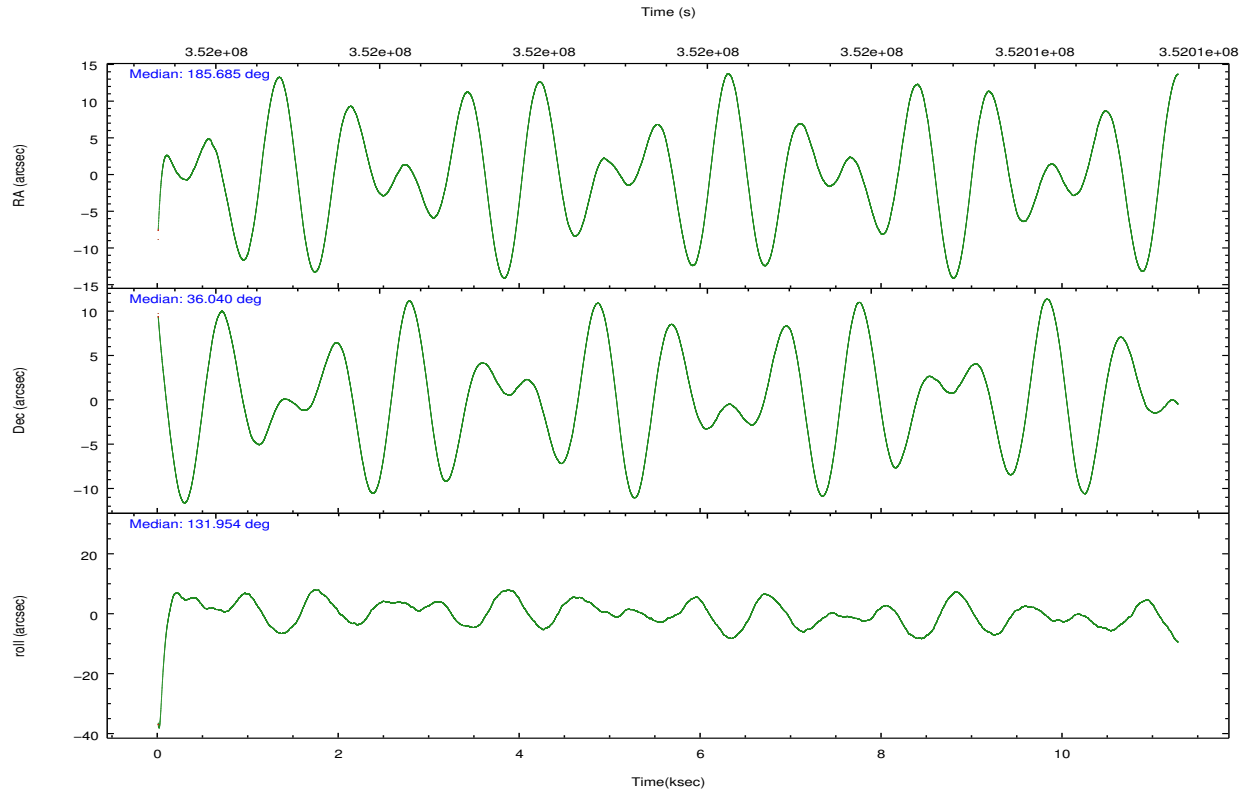
	ccd 7
grade 0 events	1608
	6%
grade 1 events	49
	0%
grade 2 events	2860
	11%
grade 3 events	1605
	6%
grade 4 events	1614
	6%
grade 5 events	2647
	10%
grade 6 events	5947
	23%
grade 7 events	8681
	34%

2.2 Compared Parameters

Parameter	Planned	Actual	Parameter	Planned	Actual
Instrument	ACIS	ACIS	Obspar format version number	7	7
Detector	ACIS-7	ACIS-7	Obspar file type	PREDICTED	ACTUAL
Grating	NONE	NONE	Obspar update status	NONE	UPDATED
Data mode	VFAINT	VFAINT	Number of optional ACIS chips dropped	0	0
Observation mode	POINTING	POINTING	On-chip summing requested	N	N
[deg] Pointing RA	185.716955	185.6846535334559	Subarray requested	CUSTOM	1/4
[deg] Pointing Dec	36.031580	36.03966886869175	Subarray start row	385	385
[deg] Pointing Roll	131.785238	131.9608231222627	Subarray row count	256	256
[mm] SIM focus pos	-0.684267	-0.6828225247311905	Alternating exposures requested	N	N
[mm] SIM defocus	0	0.001444936568705701	[s] Primary exposure time	0.000000	0.8
[mm] SIM translation stage pos	-190.132523	-190.1425803651734			
[mm] SIM translation stage offset	0	0.01005778216563158			
[s] Observation start time (MET)	351996053.184000	351994820.19993			
Observation start date	2009-02-26T00:39:47	2009-02-26T00:20:20			
[s] Observation end time (MET)	352007153.184000	352008189.27559			
Observation end date	2009-02-26T03:44:47	2009-02-26T04:03:09			
Read mode	TIMED	TIMED			

2.3 Aspect



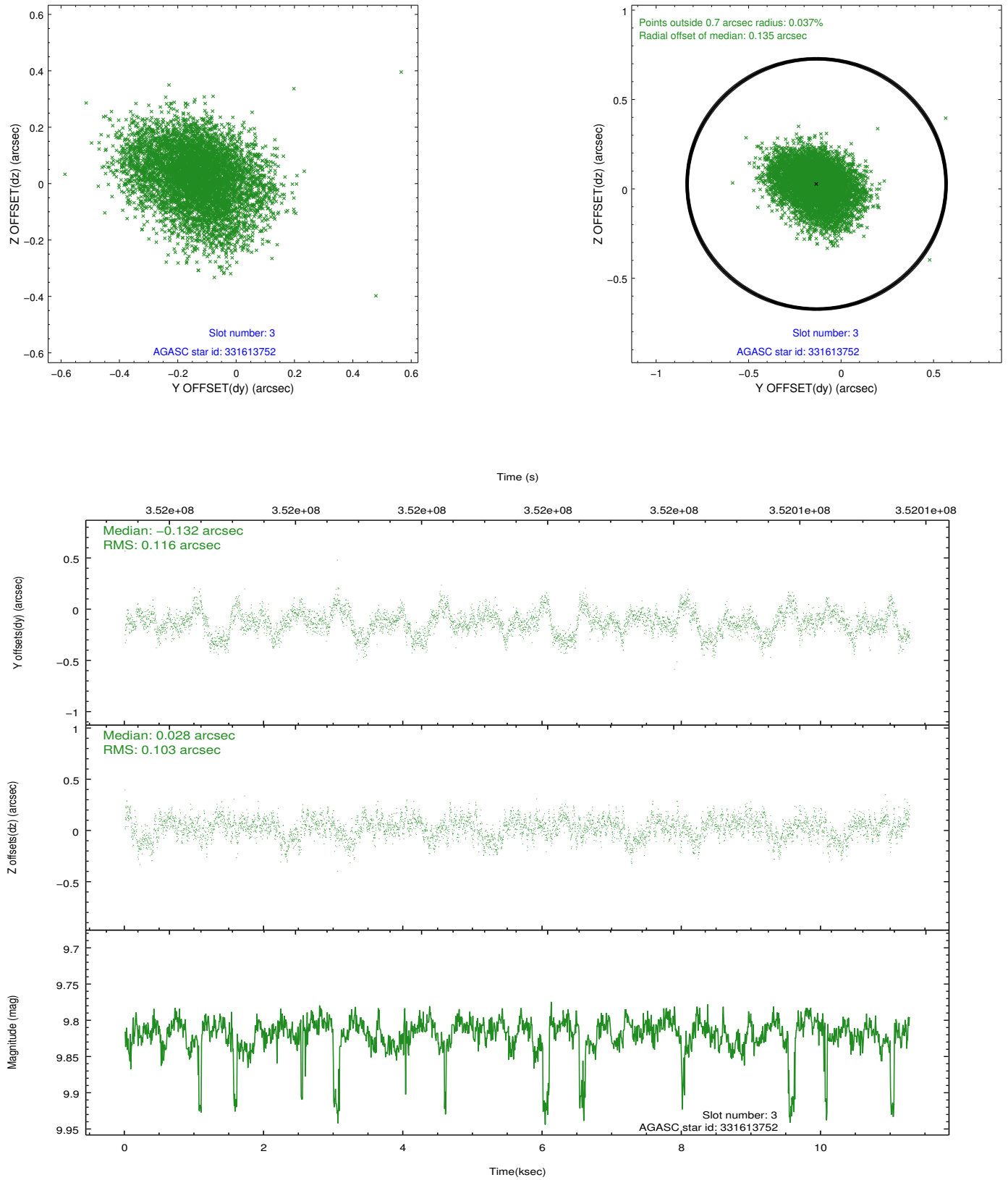


Slot Statistics

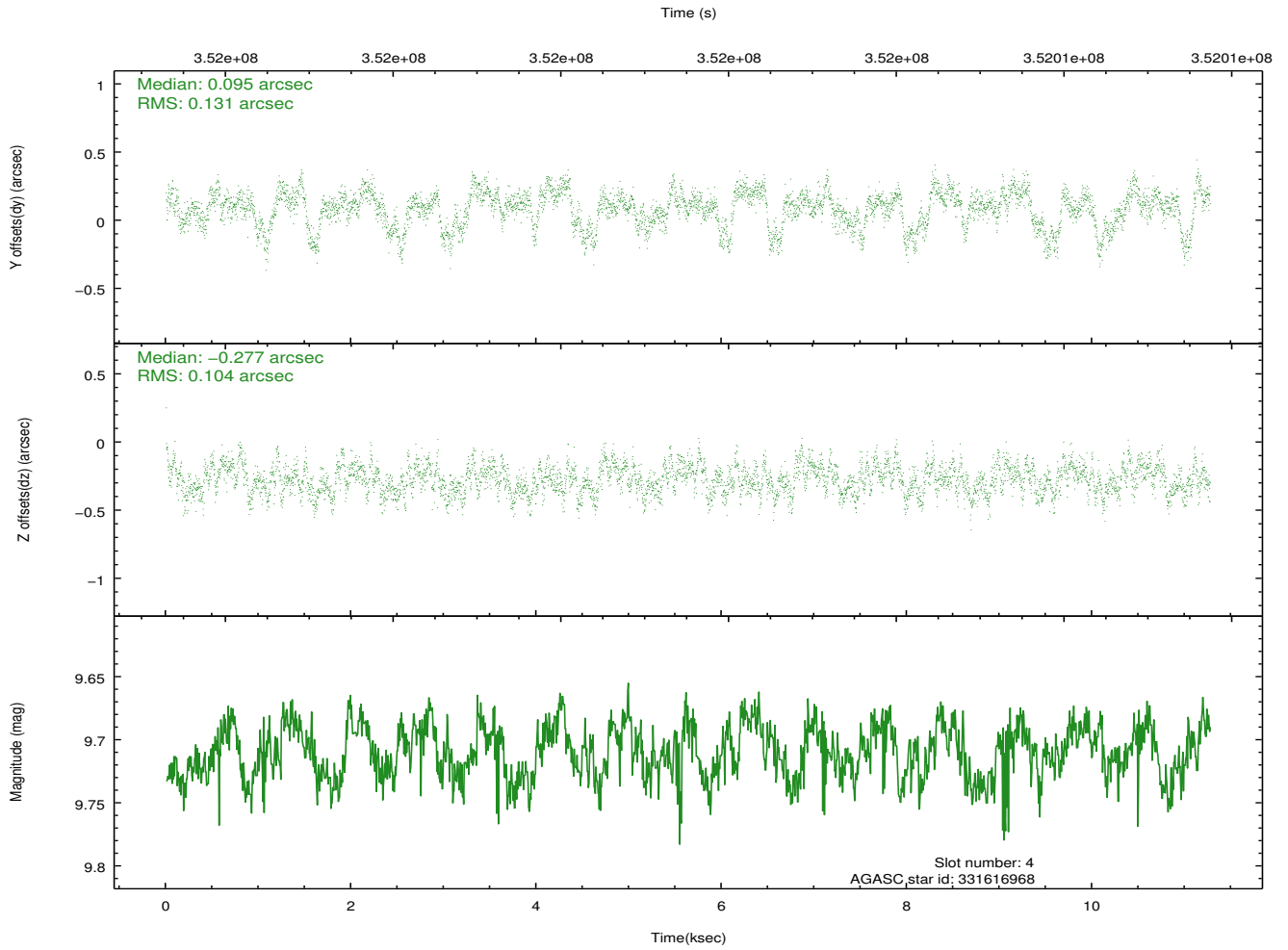
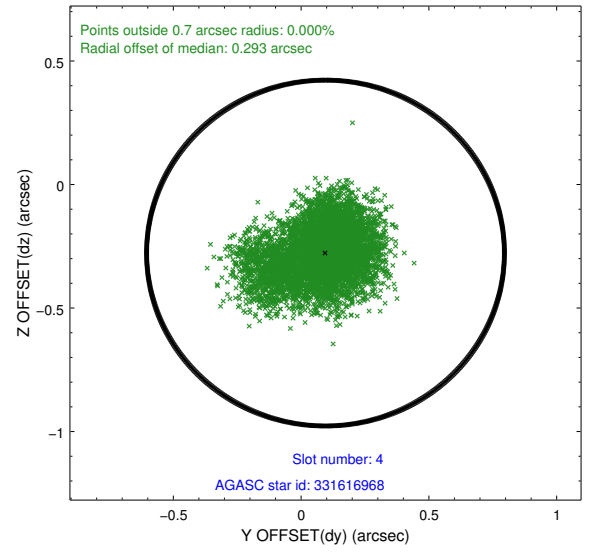
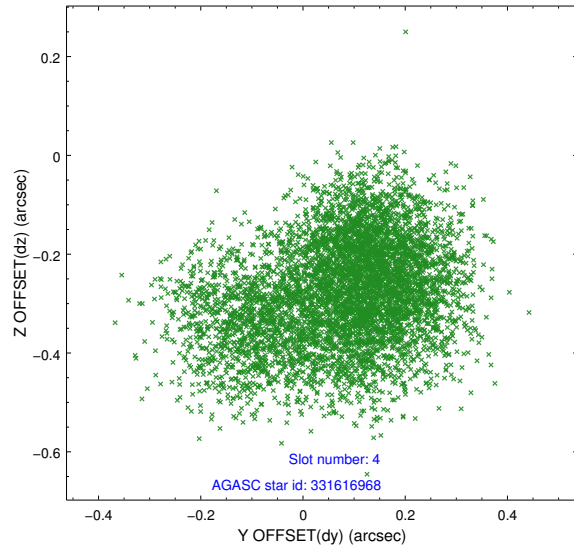
slot	status	id	mag	n_pts	med_dy	med_dz	dr1	dr2	ra	dec	mean_y	mean_z
0	FID	ACIS-S-2	6.88	2750	-0.079	-0.047	0.009	0.014	0.000000	0.000000	-766.44	-1737.18
1	FID	ACIS-S-4	6.97	2750	0.102	0.033	0.008	0.013	0.000000	0.000000	2146.82	170.90
2	FID	ACIS-S-6	7.10	2750	-0.052	0.021	0.009	0.014	0.000000	0.000000	396.16	808.81
3	GUIDE	331613752	9.82	5477	-0.132	0.028	0.167	0.264	186.037814	36.330086	183.12	-1410.10
4	GUIDE	331616968	9.71	5489	0.095	-0.277	0.177	0.295	185.097856	35.704092	331.52	2131.21
5	GUIDE	331617312	9.59	5495	-0.168	0.012	0.173	0.284	186.313030	36.306098	-410.82	-1950.92
6	GUIDE	331618160	10.24	5487	0.273	0.381	0.251	0.390	185.880721	36.644652	1331.73	-1823.27
7	GUIDE	331620560	10.27	5486	-0.048	-0.094	0.240	0.381	185.409646	36.442026	1696.80	-321.38

2.4 Star Slots

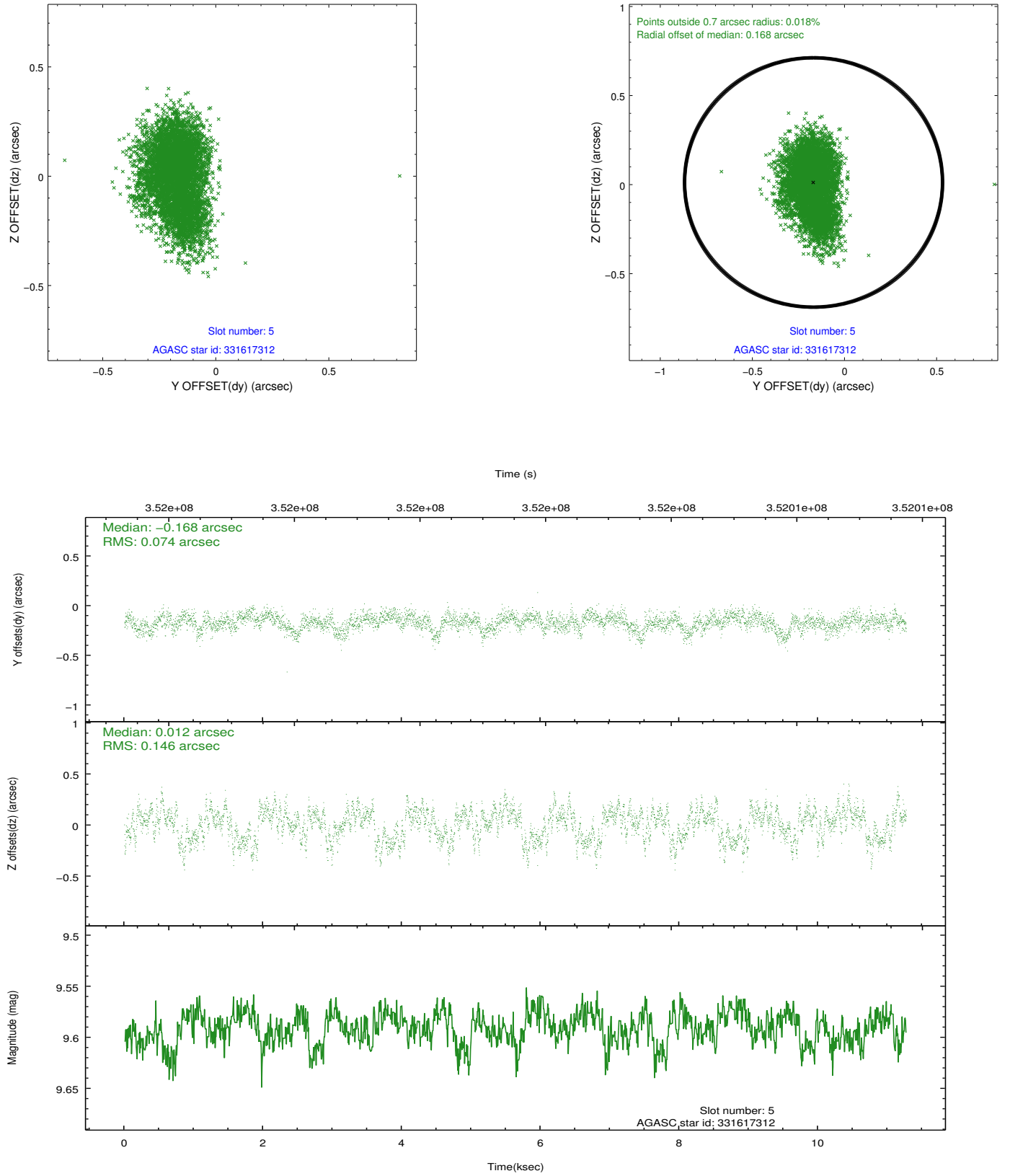
2.4.1 Slot 3



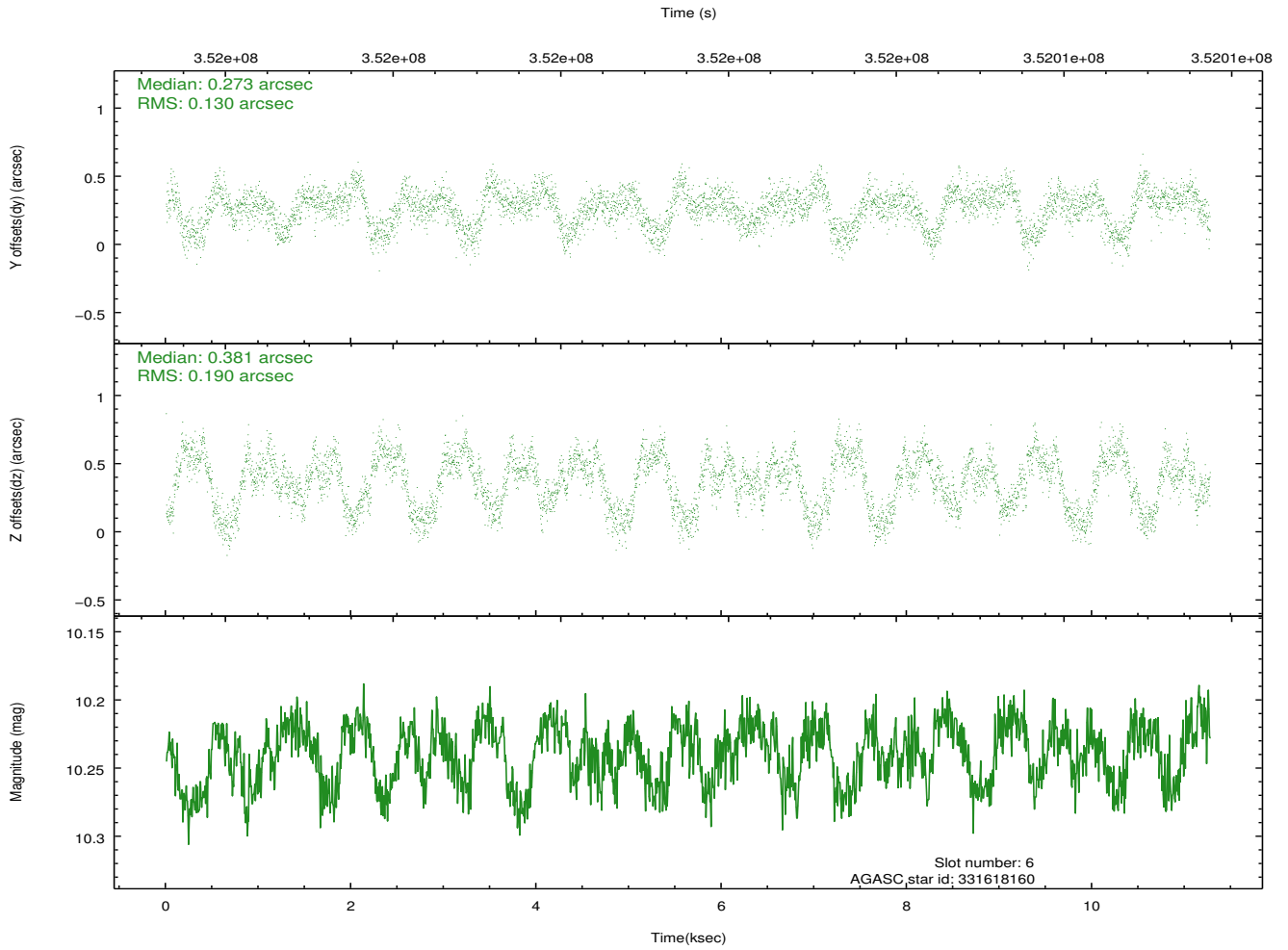
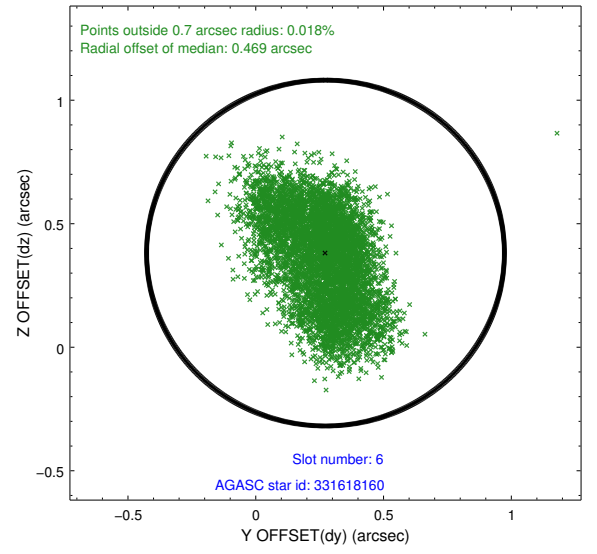
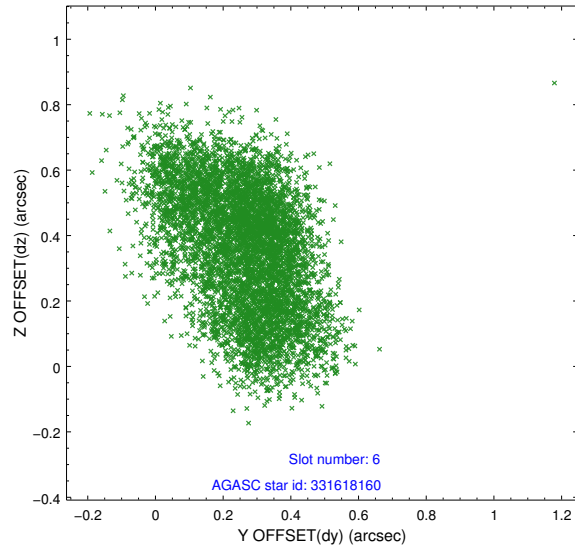
2.4.2 Slot 4



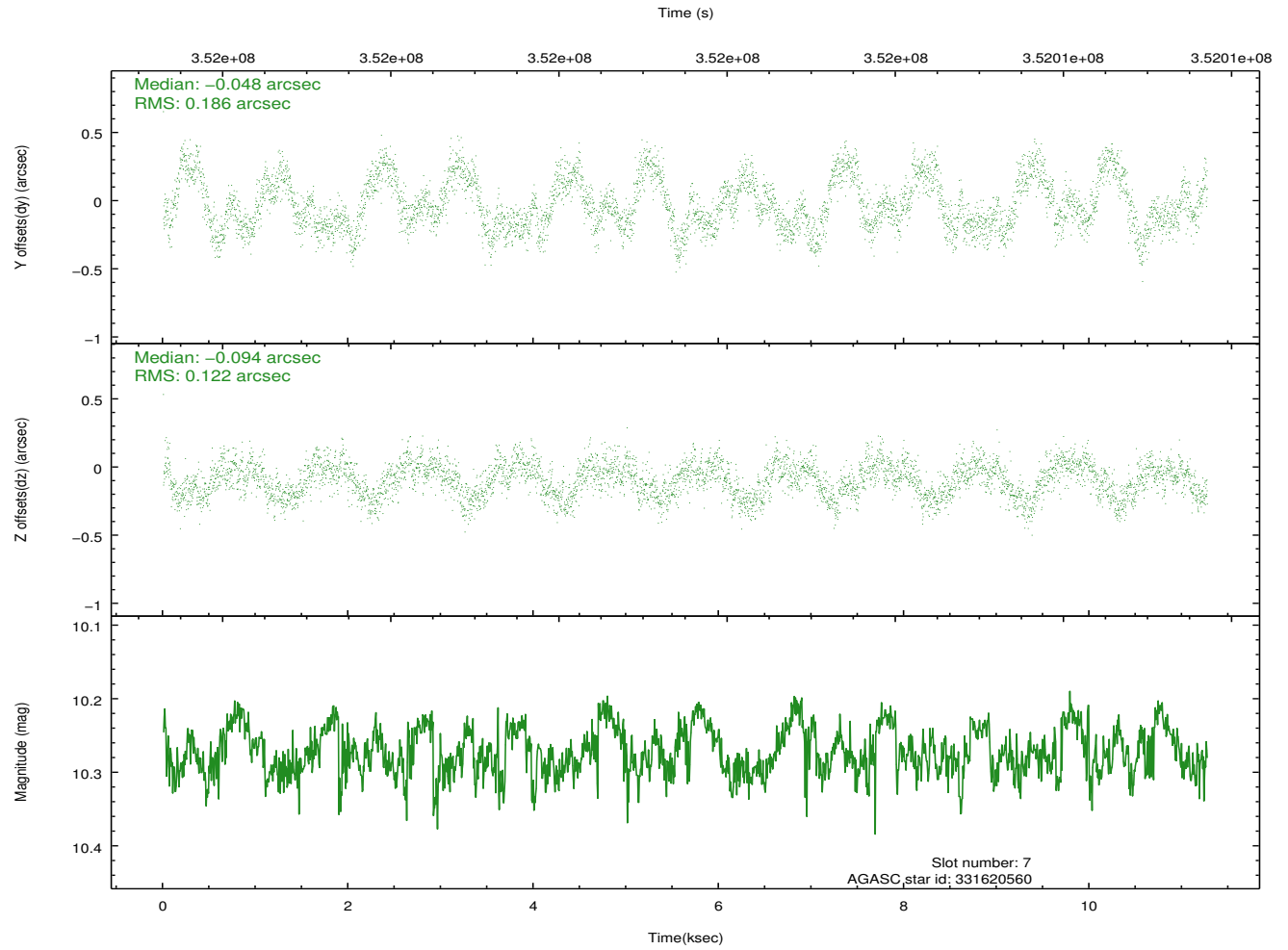
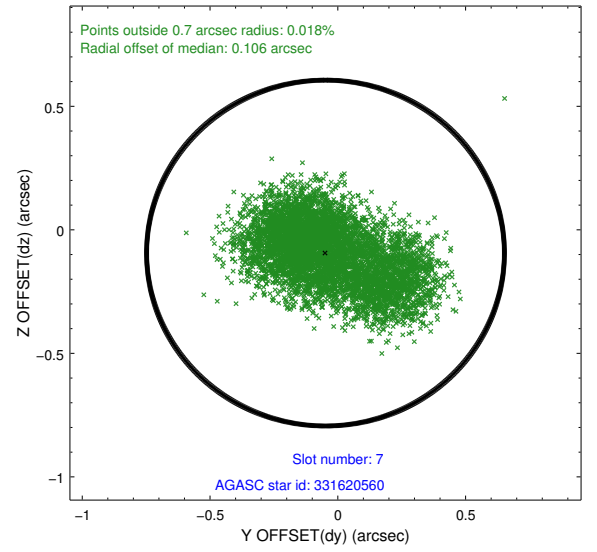
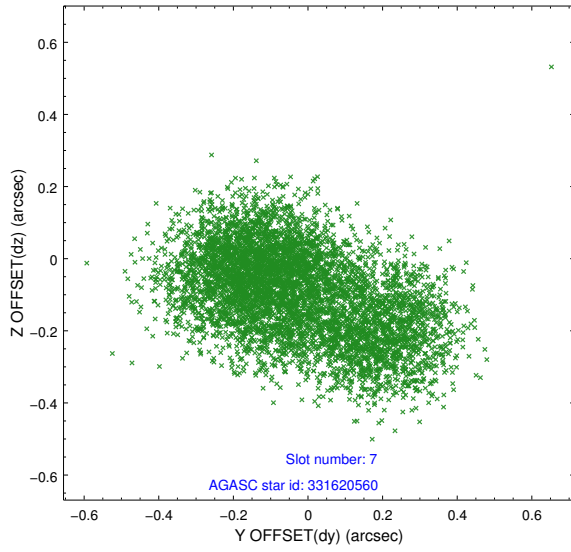
2.4.3 Slot 5



2.4.4 Slot 6

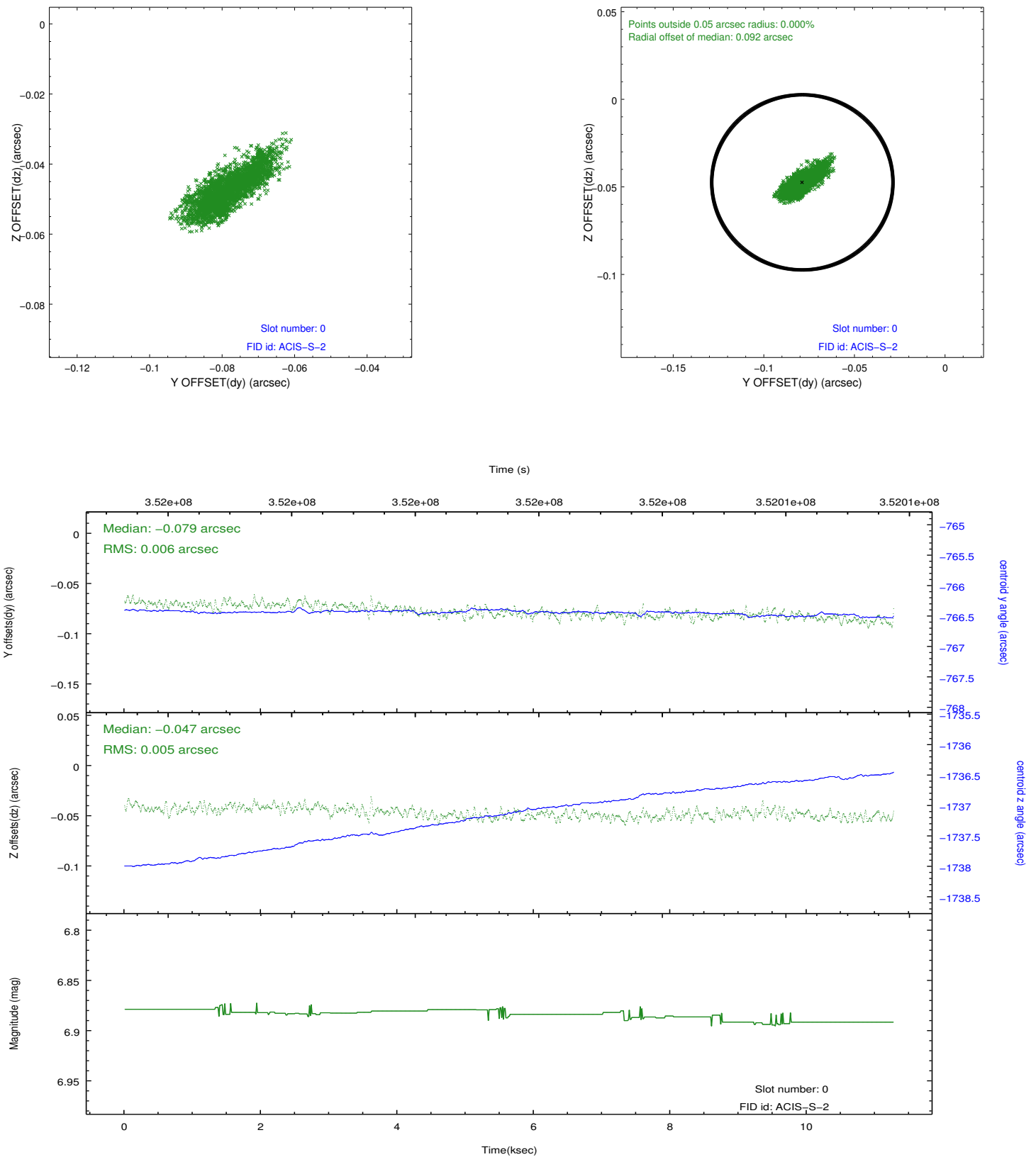


2.4.5 Slot 7

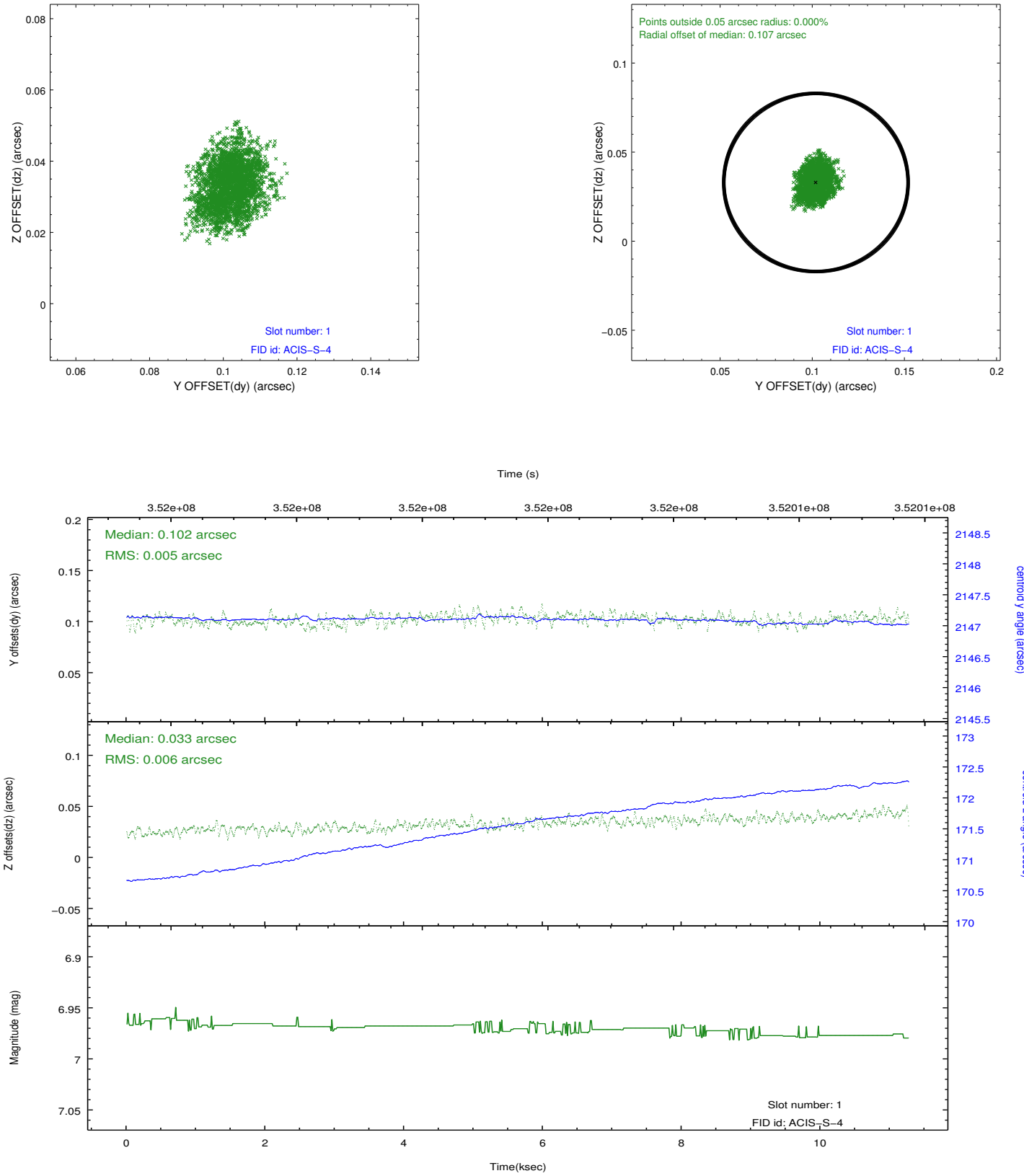


2.5 FID Slots

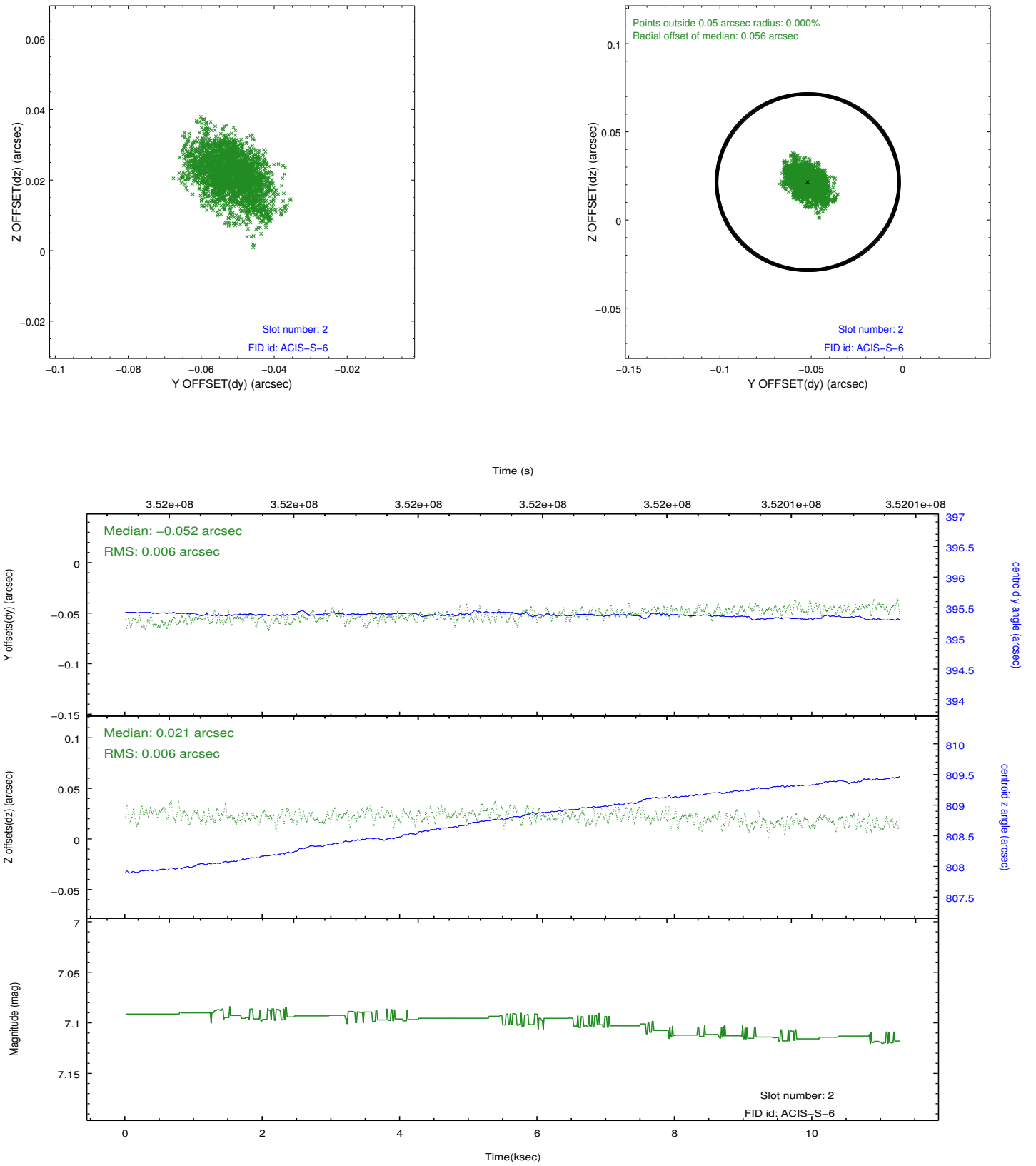
2.5.1 Slot 0



2.5.2 Slot 1



2.5.3 Slot 2



A Summary

A.1 Status

V&V Scientist	Beth Sundheim
V&V Date (YYYY-MM-DD)	2012.06.05
V&V Edition	1
V&V Disposition and Status	OK
V&V Charge Time	11.2688001

A.2 Comments