

V&V Reference Report

L2 ASCDS Version : 7.6.10

Observation 1027 - L2 Version 001
Chandra X-Ray Center

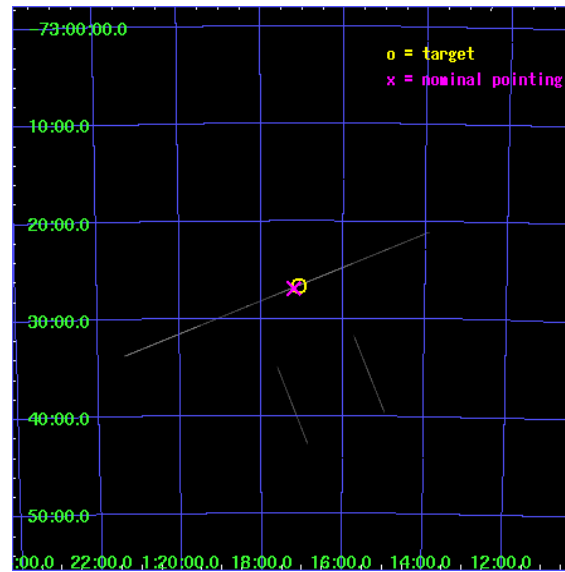
L2 Processing Date : Jun 14 2007

Contents

1	Front	2
2	OBI	3
2.1	OBI	3
2.1.1	Images	3
2.1.2	Bias	3
2.1.3	Parameters	4
2.1.4	Events	4
2.2	Compared Parameters	5
2.3	Aspect	6
2.4	Star Slots	9
2.4.1	Slot 3	9
2.4.2	Slot 4	10
2.4.3	Slot 5	11
2.4.4	Slot 6	12
2.4.5	Slot 7	13
2.5	FID Slots	14
2.5.1	Slot 0	14
2.5.2	Slot 1	15
2.5.3	Slot 2	16
A	Summary	17
A.1	Status	17
A.2	Comments	17

1 Front

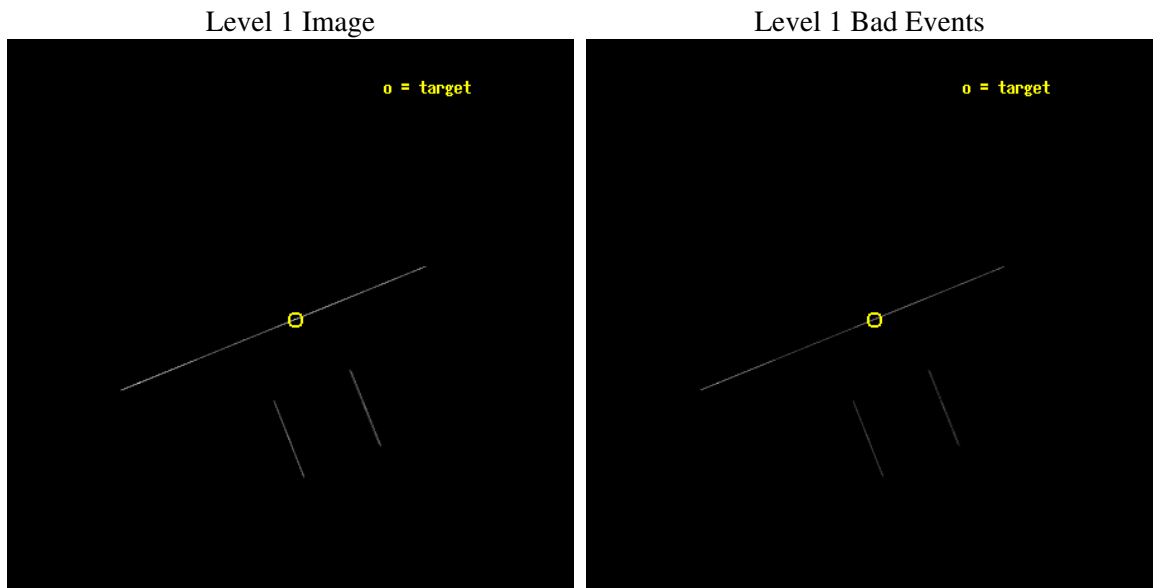
seq_num	400105
obs_id	1027
title	HIGH RESOLUTION UV/X-RAY SPECTROSCOPY OF SMC X-1
observer	Dr. Saeqa Vrtilek
object	SMC X-1
ra_targ	19.271667
dec_targ	-73.442944
ra_nom	19.301034919886
dec_nom	-73.448262676642
roll_nom	338.11147896718
revision	3
ontime	6133.5
livetime	6109.541015625
ontime2	6133.5
ontime3	6133.5
ontime5	6133.5
ontime6	6133.5
ontime7	6133.5
ontime8	6133.5
l2events	71564



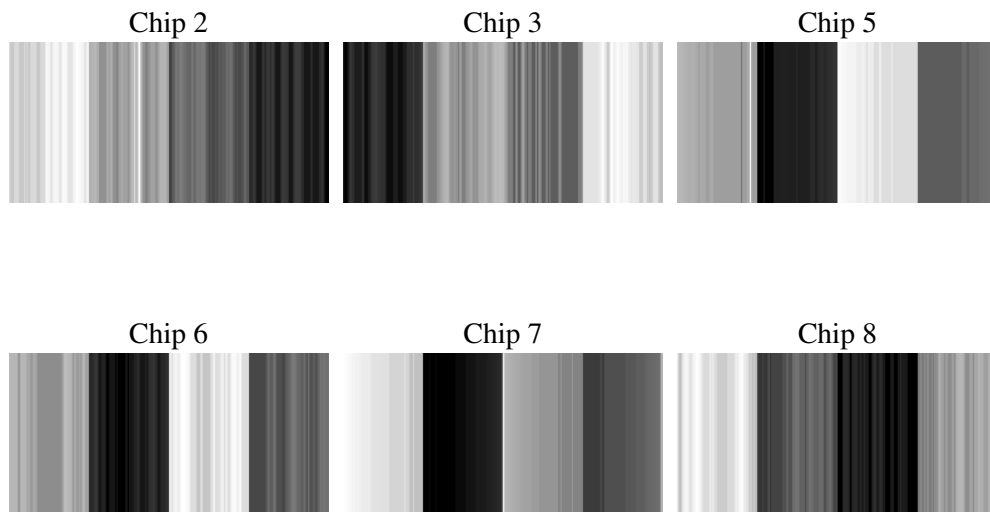
2 OBI

2.1 OBI

2.1.1 Images



2.1.2 Bias



2.1.3 Parameters

obi_num	0
ascdsver	7.6.10
caldbver	3.4.0
date	2007-06-14T13:36:15
revision	3

sched_exp_time	6000.000000
ontime	6133.5
ontime2	6133.5
ontime3	6133.5
ontime5	6133.5
ontime6	6133.5
ontime7	6133.5
ontime8	6133.5
l1events	127686

2.1.4 Events

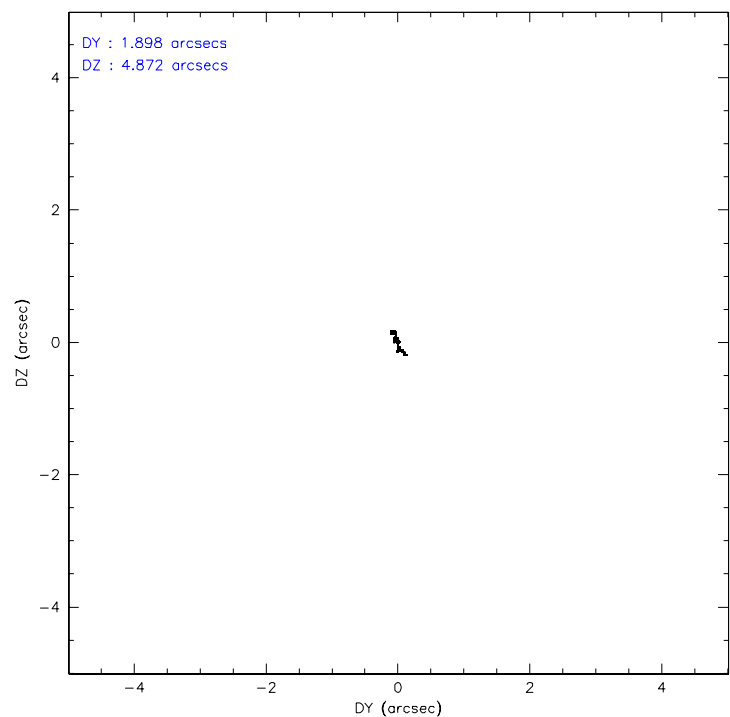
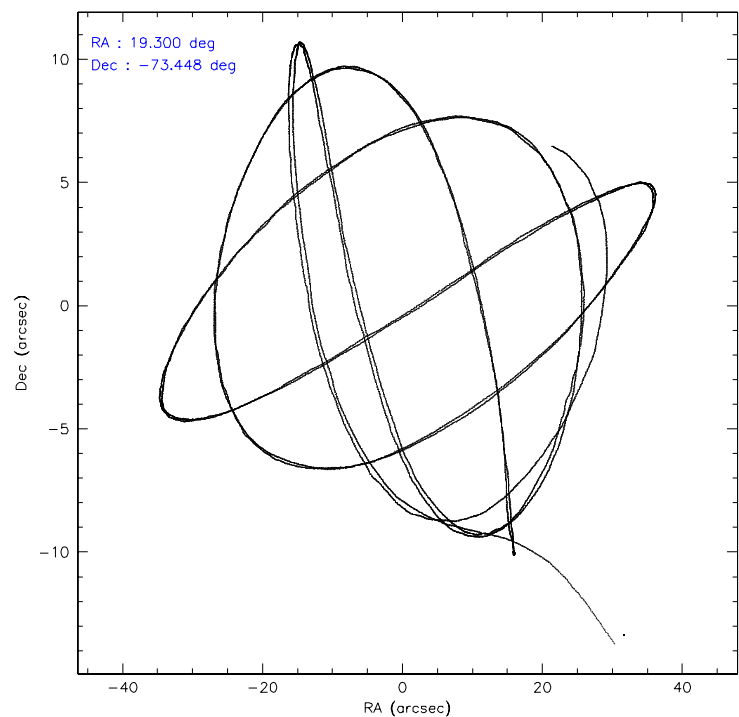
	ccd 2	ccd 3	ccd 5	ccd 6	ccd 7	ccd 8
level 1 events	8965	9462	39753	10199	41441	17866
rejected events	3313	3474	14086	3650	11139	6367
rejected %	36%	36%	35%	35%	26%	35%

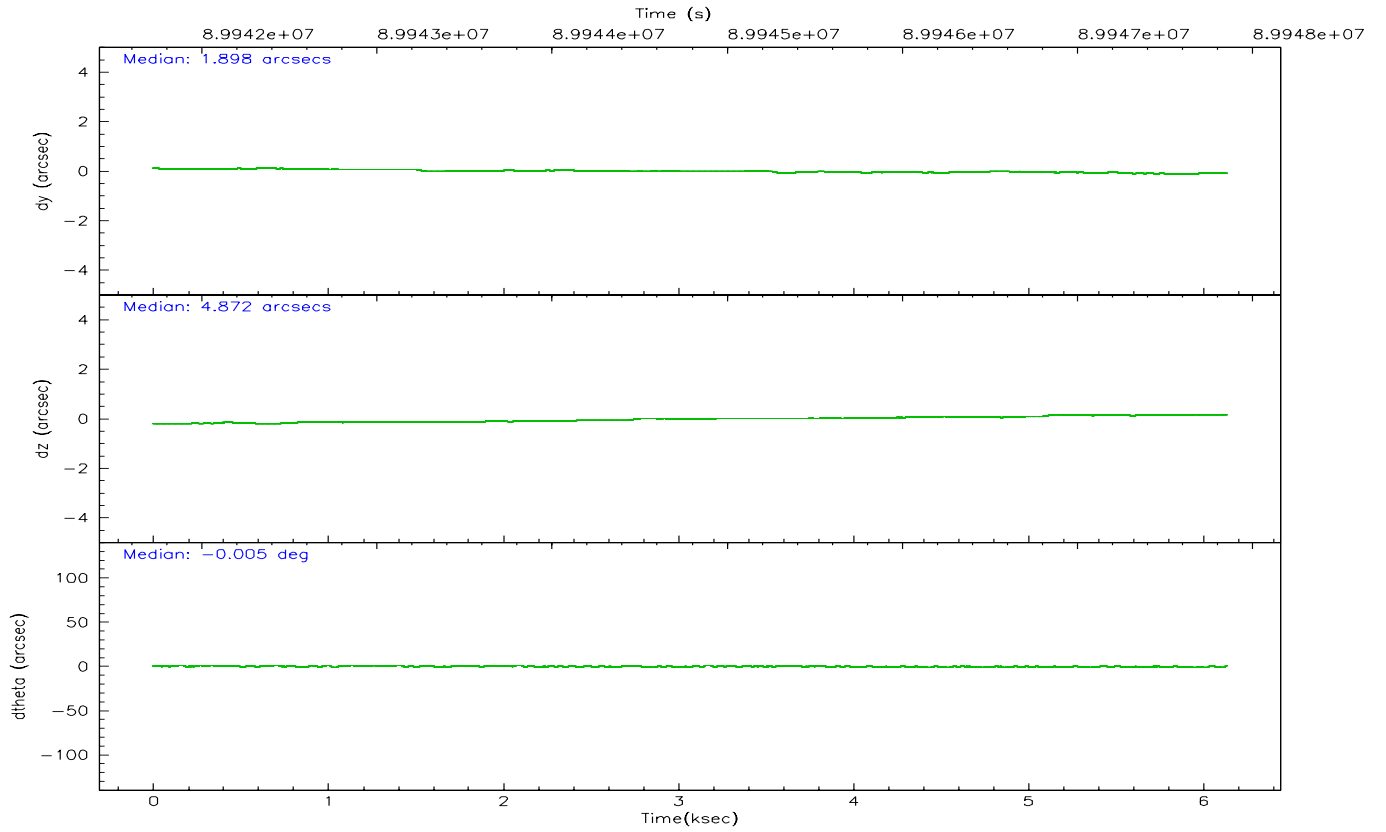
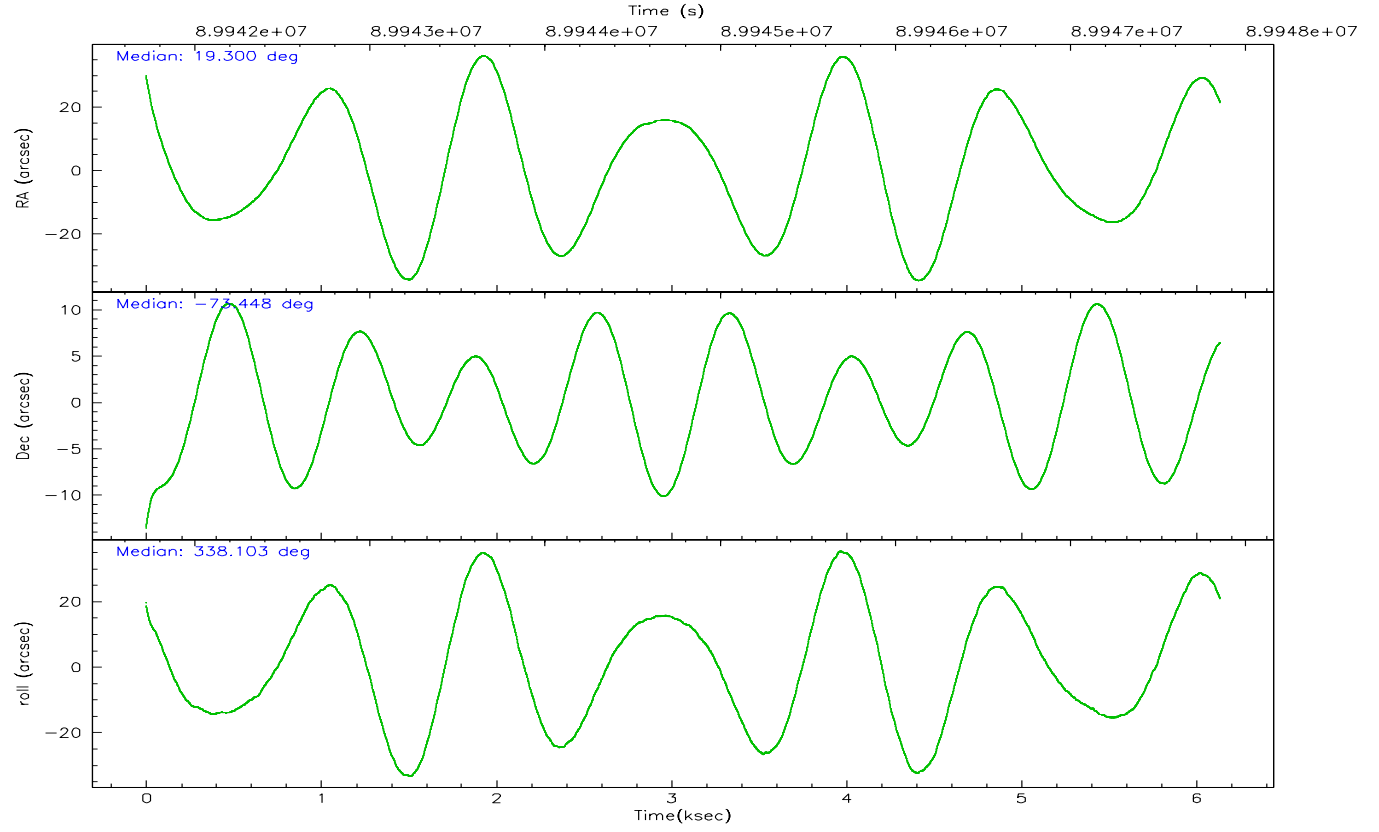
	ccd 2	ccd 3	ccd 5	ccd 6	ccd 7	ccd 8
grade 0 events	979	983	8566	1552	6467	2895
	10%	10%	21%	15%	15%	16%
grade 1 events	21	32	57	38	94	42
	0%	0%	0%	0%	0%	0%
grade 2 events	2614	2798	9694	2844	8869	4555
	29%	29%	24%	27%	21%	25%
grade 3 events	1164	1412	909	1222	3449	1945
	12%	14%	2%	11%	8%	10%
grade 4 events	1224	1157	893	1126	3469	1918
	13%	12%	2%	11%	8%	10%
grade 5 events	1417	1478	3921	1671	4952	2424
	15%	15%	9%	16%	11%	13%
grade 6 events	1546	1602	15713	1746	14141	4087
	17%	16%	39%	17%	34%	22%
grade 7 events	0	0	0	0	0	0
	0%	0%	0%	0%	0%	0%

2.2 Compared Parameters

Parameter	Planned	Actual	Parameter	Planned	Actual
Instrument	ACIS	ACIS	Obspar format version number	6	6
Detector	ACIS-235678	ACIS-235678	Obspar file type	PREDICTED	ACTUAL
Grating	NONE	NONE	Obspar update status	NONE	UPDATED
Data mode	CC33_FAINT	CC33_FAINT	Number of optional ACIS chips dropped	0	0
Observation mode	POINTING	POINTING	On-chip summing requested	N	N
Pointing RA	19.205964	19.30103491988596	Subarray requested	NONE	NONE
Pointing Dec	-73.452234	-73.44826267664176	Alternating exposures requested	N	N
Pointing Roll	337.863729	338.1114789671772	Primary exposure time	0.000000	0
SIM focus pos (mm)	-0.684267	-0.6828225247311905			
SIM defocus (mm)	0	0.001444936568705701			
SIM translation stage pos (mm)	-190.132523	-190.1400660498719			
SIM translation stage offset (mm)	0	0.00754346686406393			
Phase constraints	Y	Y			
Phase period	3.892000	3.892000			
Phase epoch	50141.466800	50141.466800			
Phase start	0.000000	0.000000			
Phase end	0.800000	0.800000			
Phase start error	0.050000	0.050000			
Phase end error	0.050000	0.050000			
Observation start time	89941856.184000	89939765.332213			
Observation start date	2000-11-06T23:49:52	2000-11-06T23:16:05			
Observation end time	89947856.184000	89948512.68254399			
Observation end date	2000-11-07T01:29:52	2000-11-07T01:41:52			
Read mode	CONTINUOUS	CONTINUOUS			

2.3 Aspect



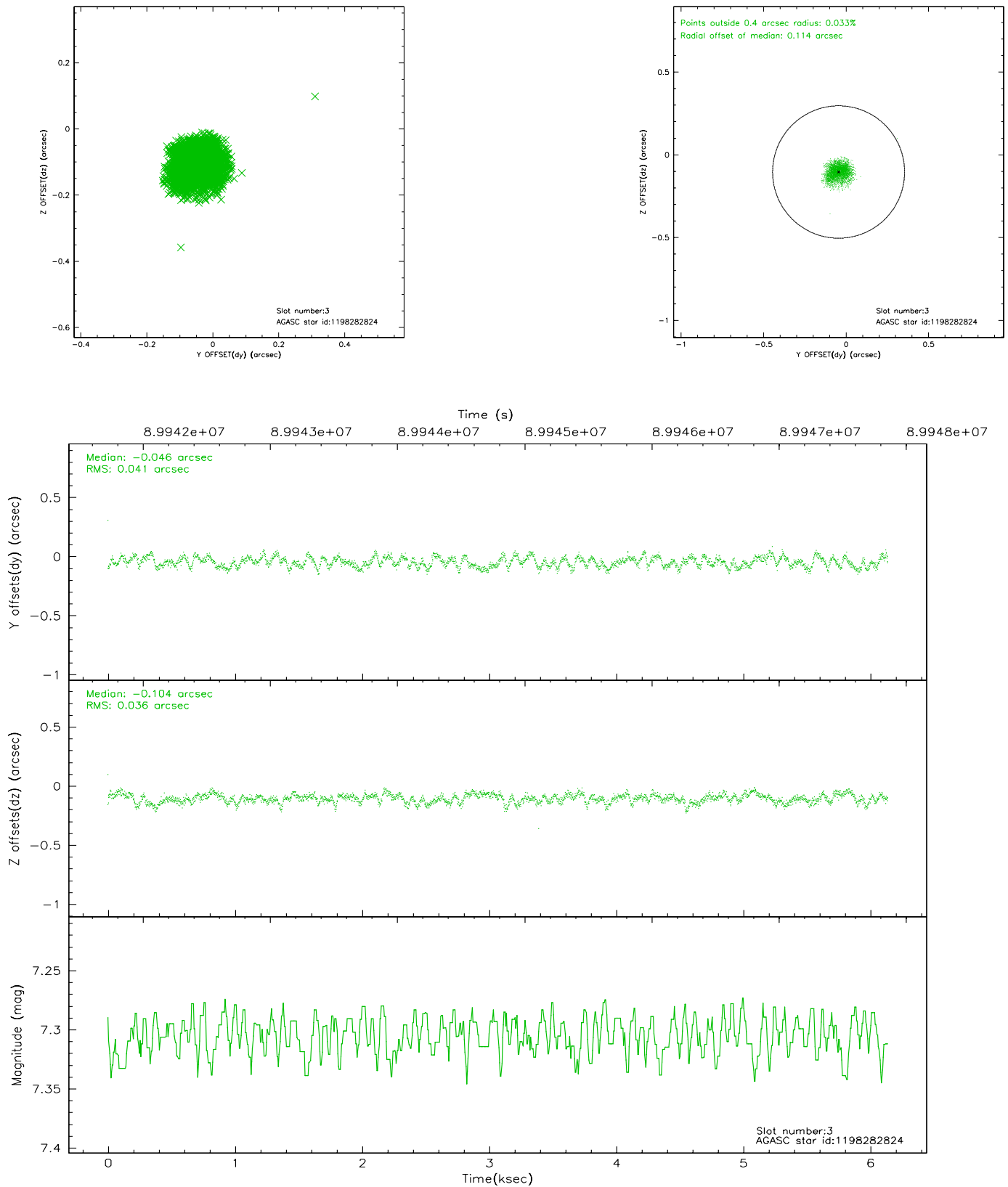


Slot Statistics

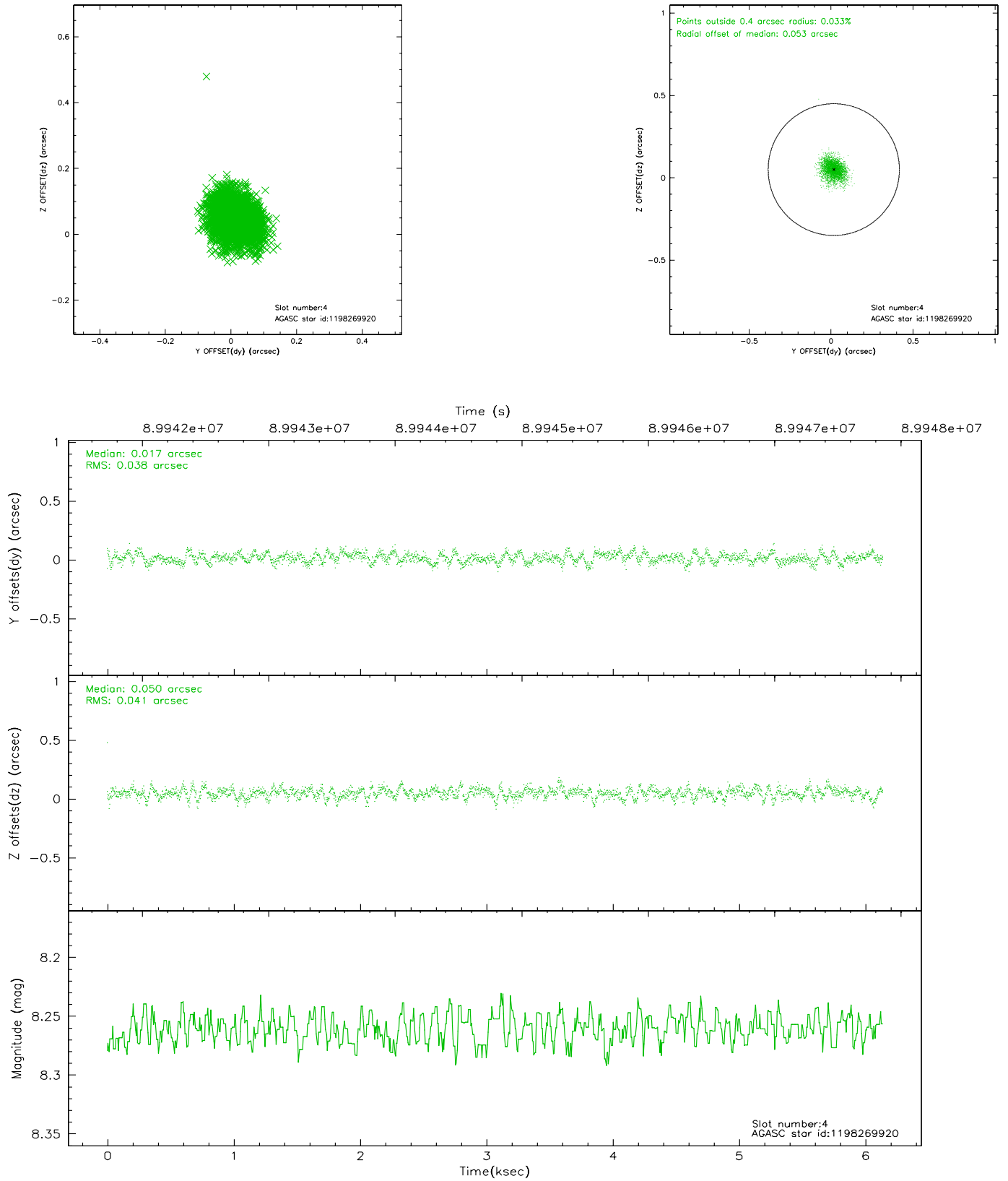
slot	status	id	mag	n_pts	med_dy	med_dz	dr1	dr2	ra	dec	mean_y	mean_z
0	FID	ACIS-S-2	7.11	1498	-0.031	0.014	0.007	0.011	0.000000	0.000000	-754.52	-1725.95
1	FID	ACIS-S-4	7.20	1498	-0.049	0.011	0.005	0.008	0.000000	0.000000	2158.28	181.57
2	FID	ACIS-S-5	7.24	1498	0.049	-0.016	0.007	0.011	0.000000	0.000000	-1806.07	176.26
3	GUIDE	1198282824	7.30	2996	-0.046	-0.104	0.059	0.092	18.044095	-73.907062	-452.34	-1963.60
4	GUIDE	1198269920	8.26	2996	0.017	0.050	0.059	0.098	20.316466	-73.033728	516.64	1825.09
5	GUIDE	1198276744	8.61	2995	-0.027	-0.008	0.066	0.102	19.489008	-74.153493	1209.83	-2232.96
6	GUIDE	1198283120	9.34	2995	0.046	-0.001	0.081	0.134	18.724531	-73.257934	-724.80	457.61
7	GUIDE	1198268712	8.53	2995	0.012	0.066	0.064	0.106	21.961983	-73.269598	2421.43	1625.07

2.4 Star Slots

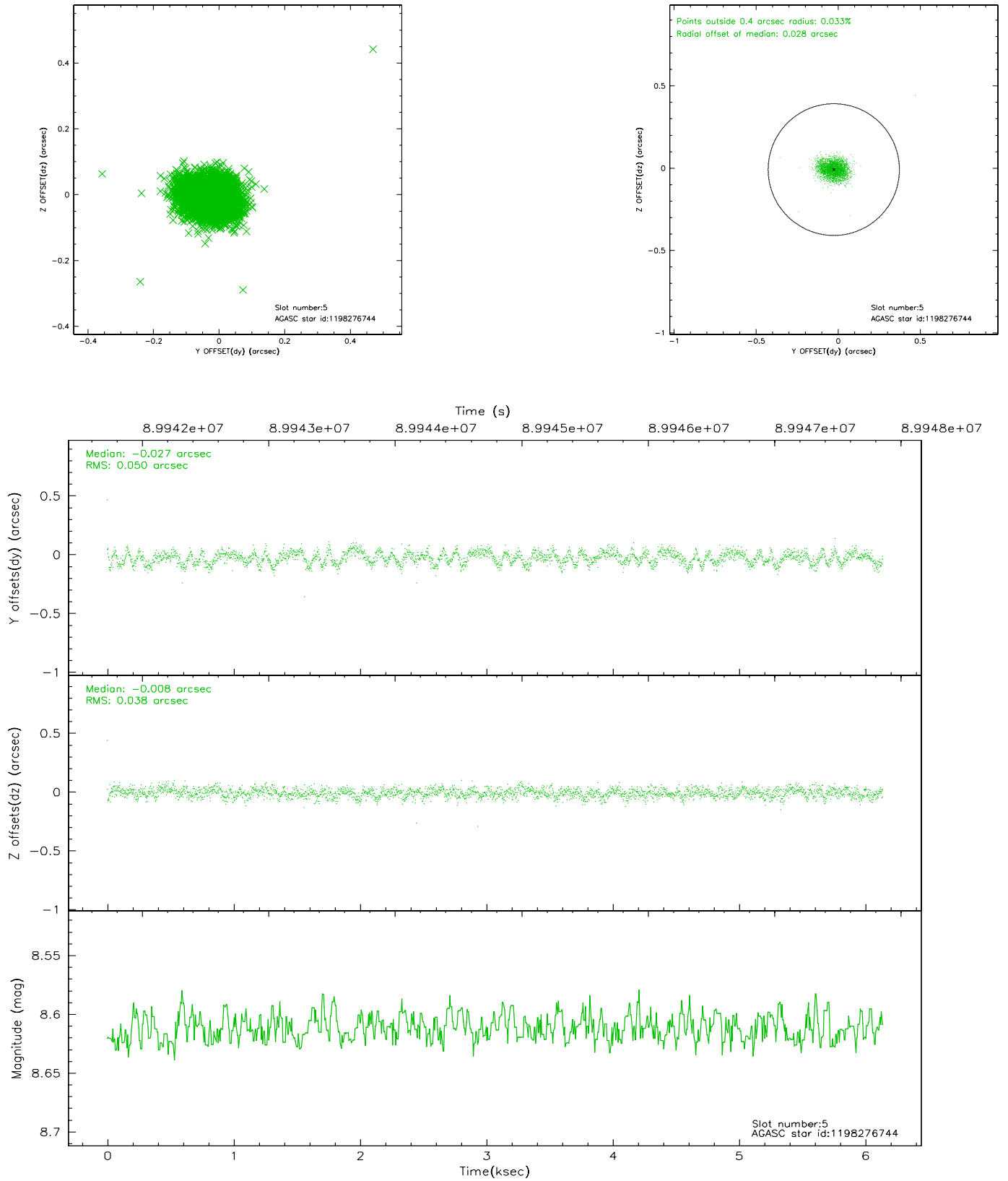
2.4.1 Slot 3



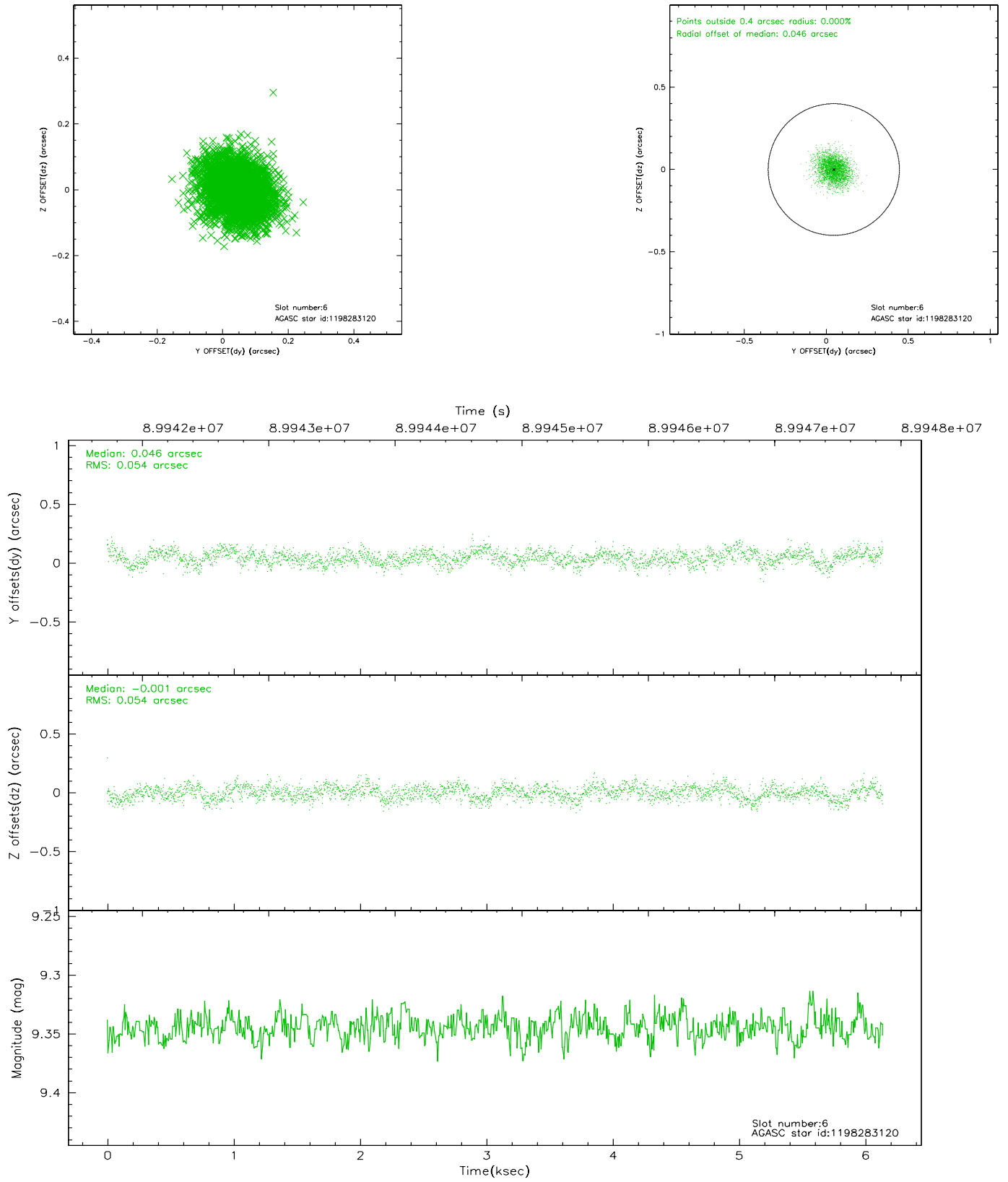
2.4.2 Slot 4



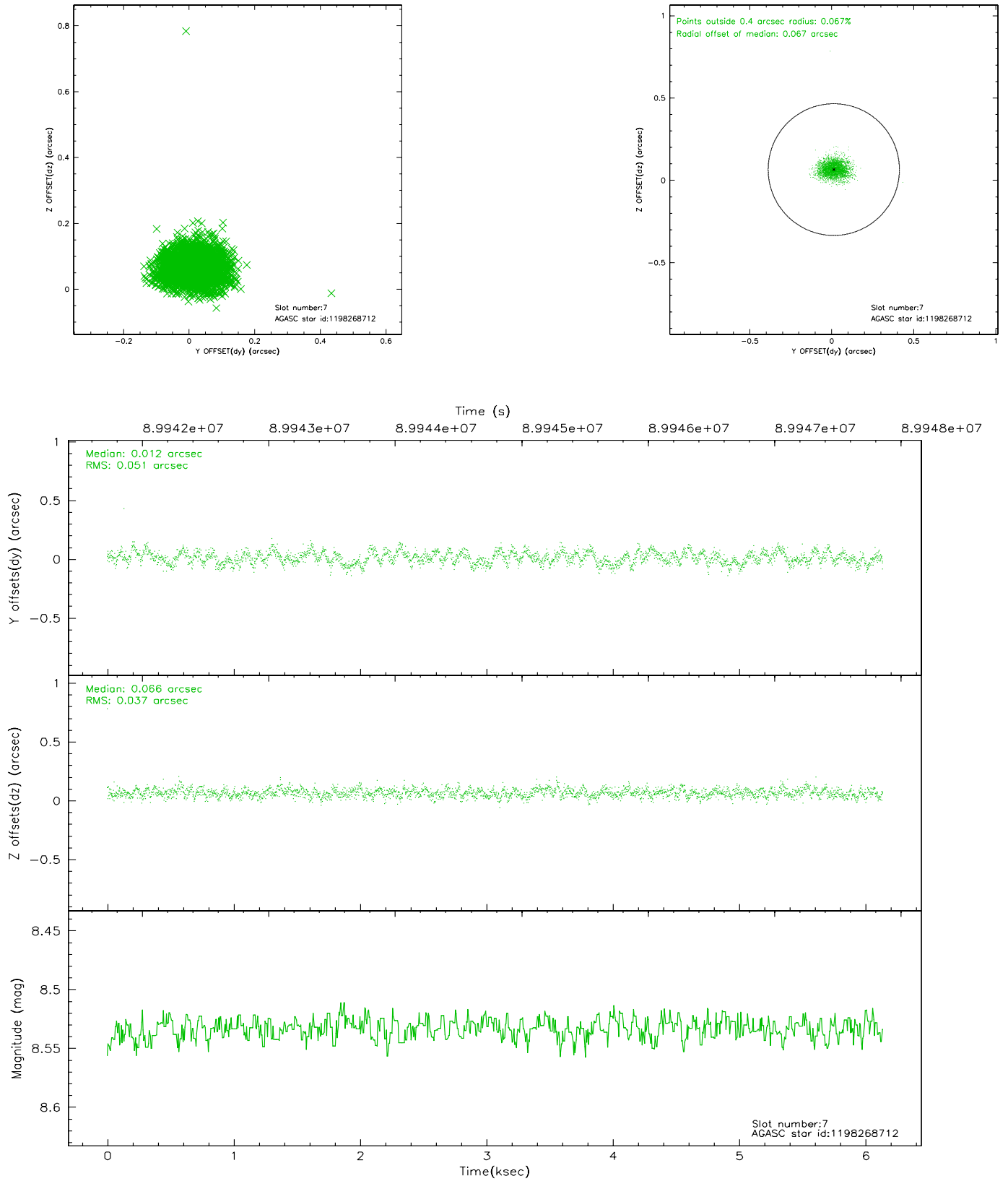
2.4.3 Slot 5



2.4.4 Slot 6

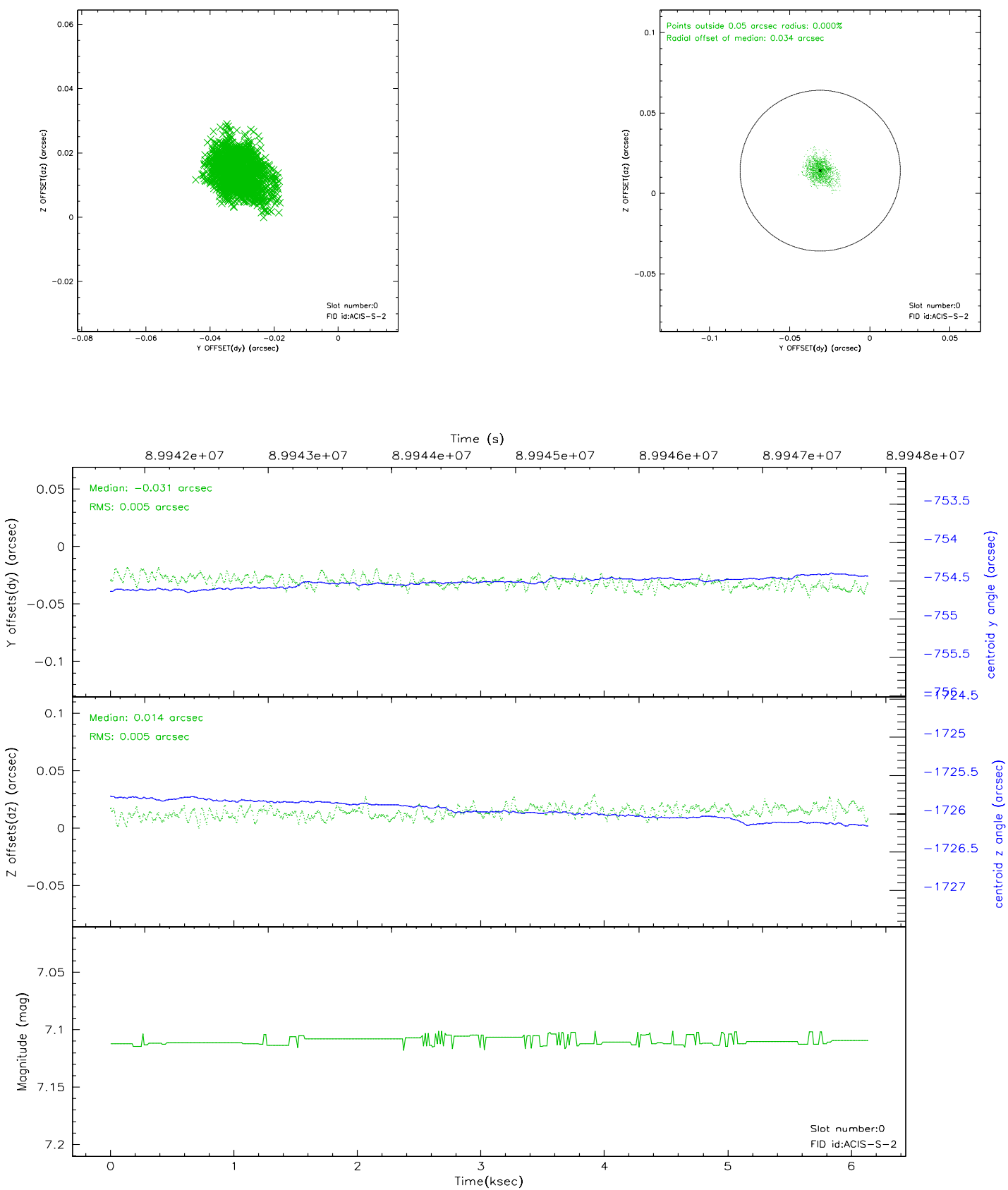


2.4.5 Slot 7

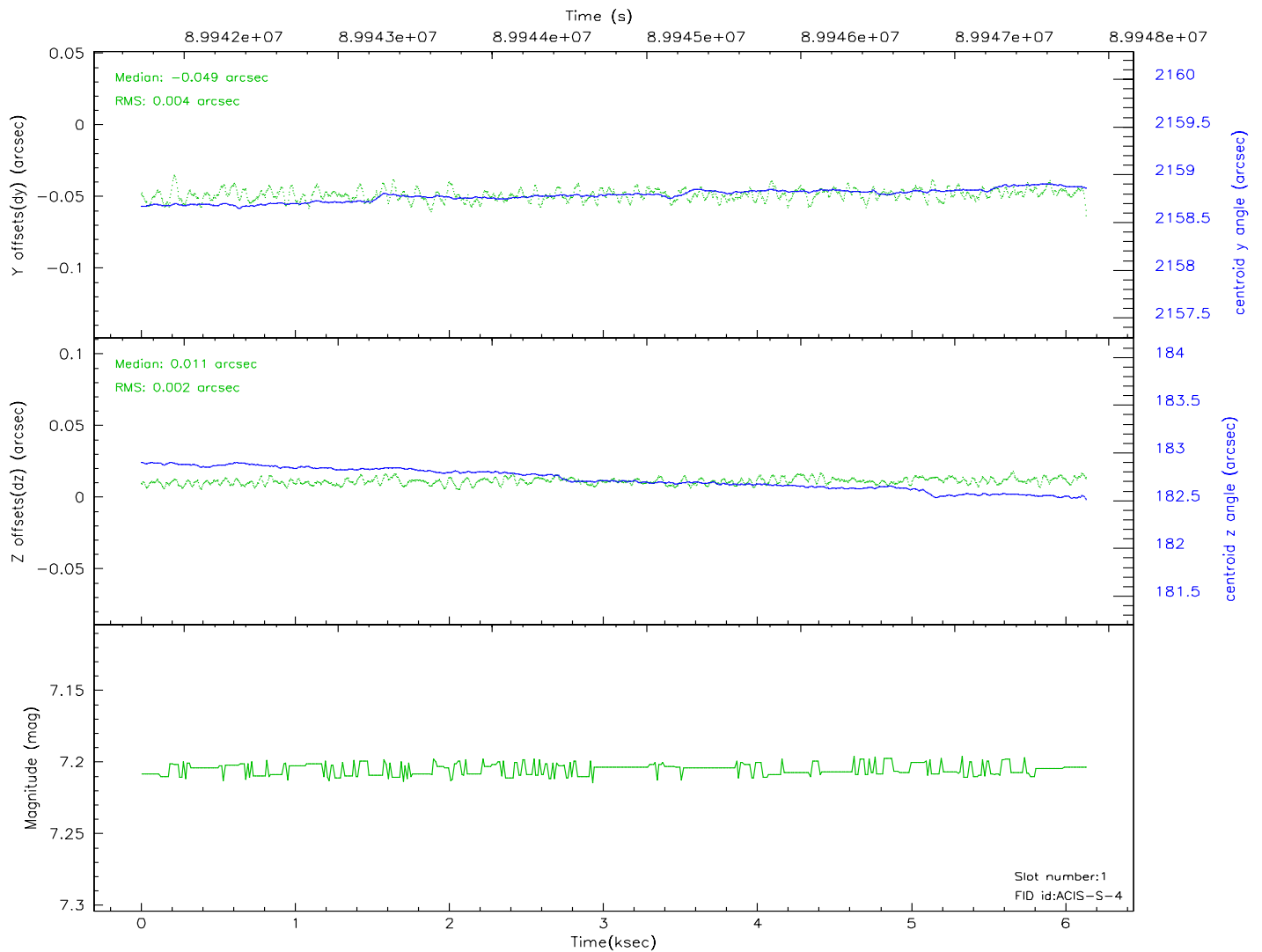
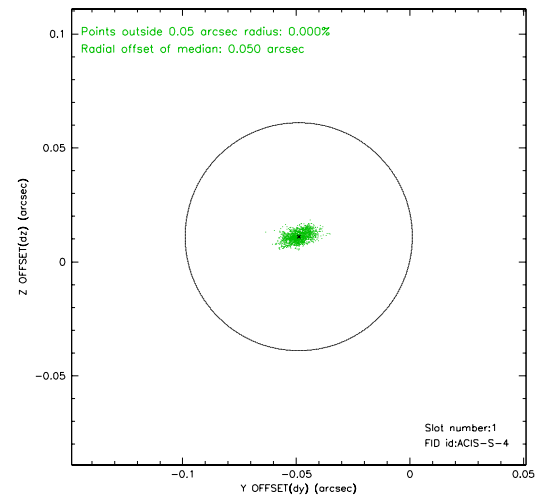
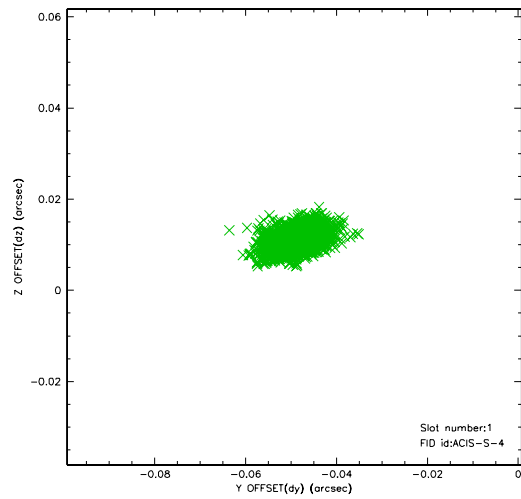


2.5 FID Slots

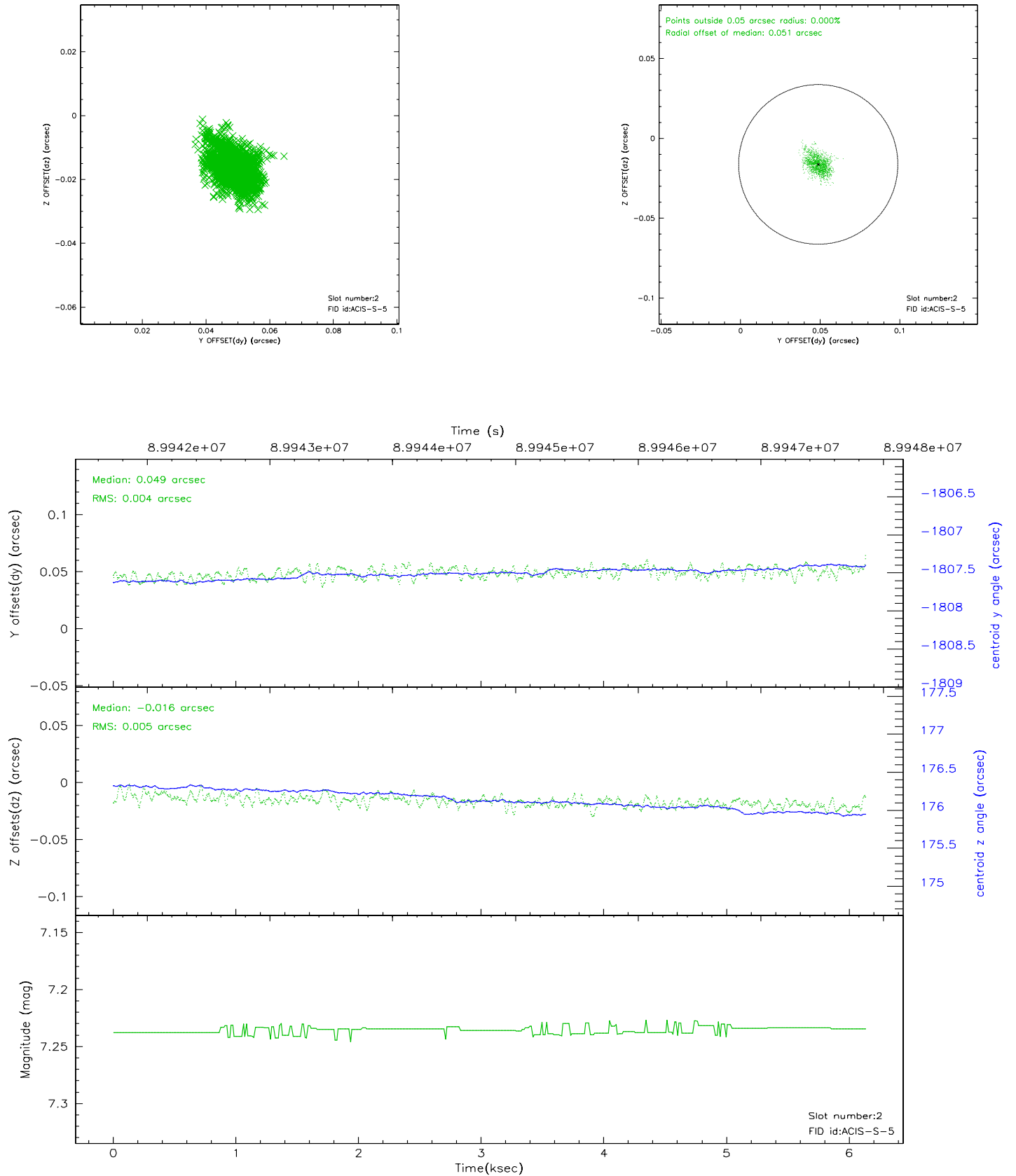
2.5.1 Slot 0



2.5.2 Slot 1



2.5.3 Slot 2



A Summary

A.1 Status

V&V Scientist	David Huenemoerder
V&V Date (YYYY-MM-DD)	2007.06.14
V&V Edition	1
V&V Disposition and Status	OK
V&V Charge Time	6.137

A.2 Comments

window, phase constraints met.