

V&V Reference Report

L2 ASCDS Version : 8.4.4

Observation 8626 - L2 Version 2
Chandra X-Ray Center

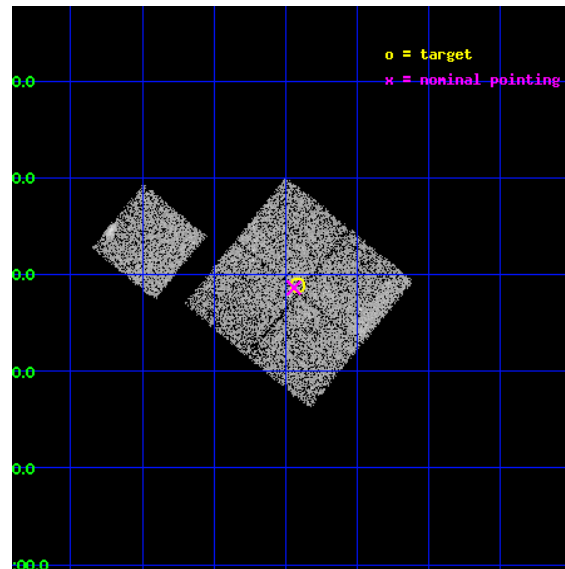
L2 Processing Date : May 5 2012

Contents

1	Front	2
2	OBI	3
2.1	OBI	3
2.1.1	Images	3
2.1.2	Bias	3
2.1.3	Parameters	4
2.1.4	Events	4
2.2	Compared Parameters	5
2.3	Aspect	6
2.4	Star Slots	9
2.4.1	Slot 3	9
2.4.2	Slot 4	10
2.4.3	Slot 5	11
2.4.4	Slot 6	12
2.4.5	Slot 7	13
2.5	FID Slots	14
2.5.1	Slot 0	14
2.5.2	Slot 1	15
2.5.3	Slot 2	16
A	Summary	17
A.1	Status	17
A.2	Comments	17

1 Front

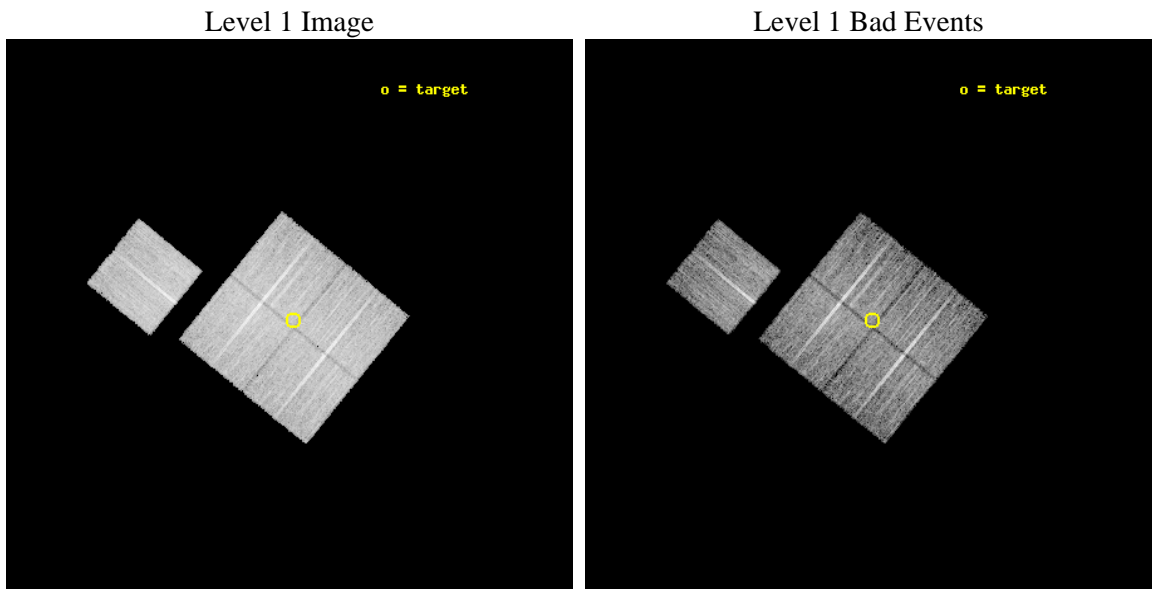
seq_num	900763	Sequence number
obs_id	8626	Observation id
title	Chandra Observations of the DEEP2 Fields	Proposal title
observer	Dr. Stephen Murray	Principal investigator
object	DEEP2 Field 4	Source name
dtcycle	0	
cycle	P	events from which exps? Prim/Second/Both
ra_targ	36.979066	Observer's specified target RA [deg]
dec_targ	0.481421	Observer's specified target Dec [deg]
ra_nom	36.985804836524	Nominal RA [deg]
dec_nom	0.4769679209154	Nominal Dec [deg]
roll_nom	309.23862326102	Nominal Roll [deg]
revision	2	Processing version of data
ontime	8974.5000690222	Sum of GTIs [s]
livetime	8857.2416186896	Livetime [s]
ontime0	8974.5000690222	Sum of GTIs [s]
ontime1	8971.3590688109	Sum of GTIs [s]
ontime2	8974.5000690222	Sum of GTIs [s]
ontime3	8974.5000690222	Sum of GTIs [s]
ontime6	8971.3590788245	Sum of GTIs [s]
l2events	31420	Number of level 2 events



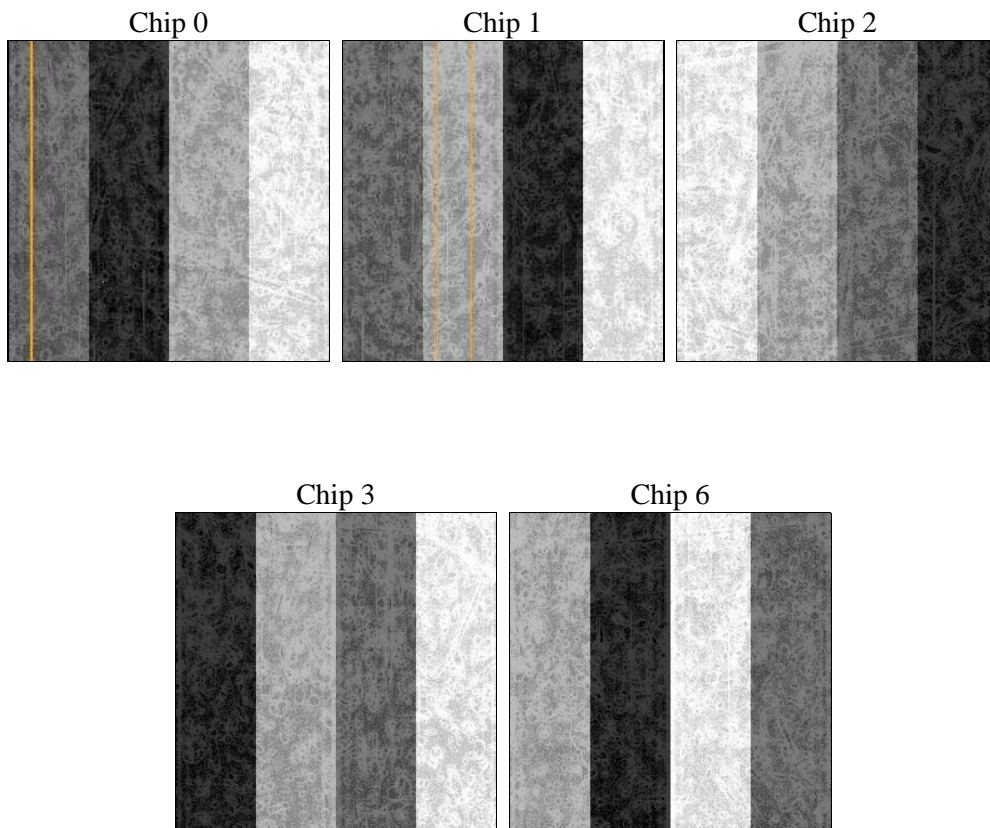
2 OBI

2.1 OBI

2.1.1 Images



2.1.2 Bias



2.1.3 Parameters

obi_num	0	Obi number	sched_exp_time	8800.000000	[s] Scheduled observation exposure time
ascdsver	8.4.4	Processing system revision	ontime	8974.5000690222	Sum of GTIs [s]
caldsver	4.4.9	 	ontime0	8974.5000690222	Sum of GTIs [s]
date	2012-05-05T20:55:34	Date and time of file creation	ontime1	8971.3590688109	Sum of GTIs [s]
revision	2	Processing version of data	ontime2	8974.5000690222	Sum of GTIs [s]
			ontime3	8974.5000690222	Sum of GTIs [s]
			ontime6	8971.3590788245	Sum of GTIs [s]
			l1events	415816	Number of level 1 events

2.1.4 Events

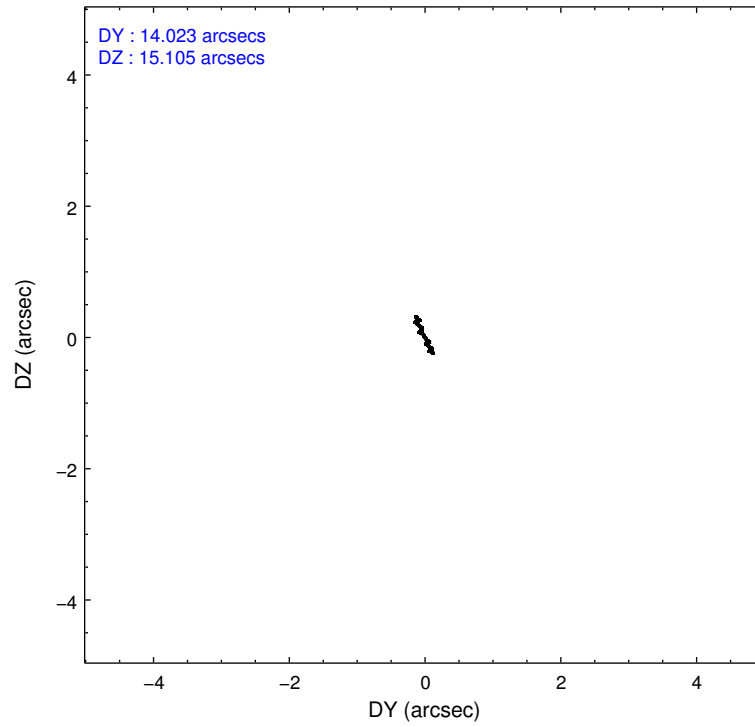
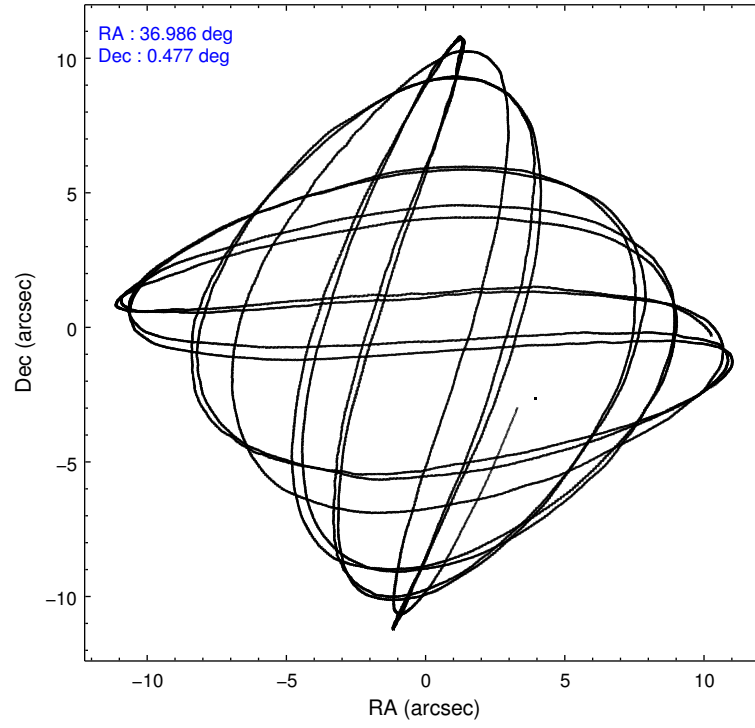
	ccd 0	ccd 1	ccd 2	ccd 3	ccd 6
level 1 events	77784	79756	88673	82484	87119
rejected events	70286	71407	81399	75544	79369
rejected %	90%	89%	91%	91%	91%

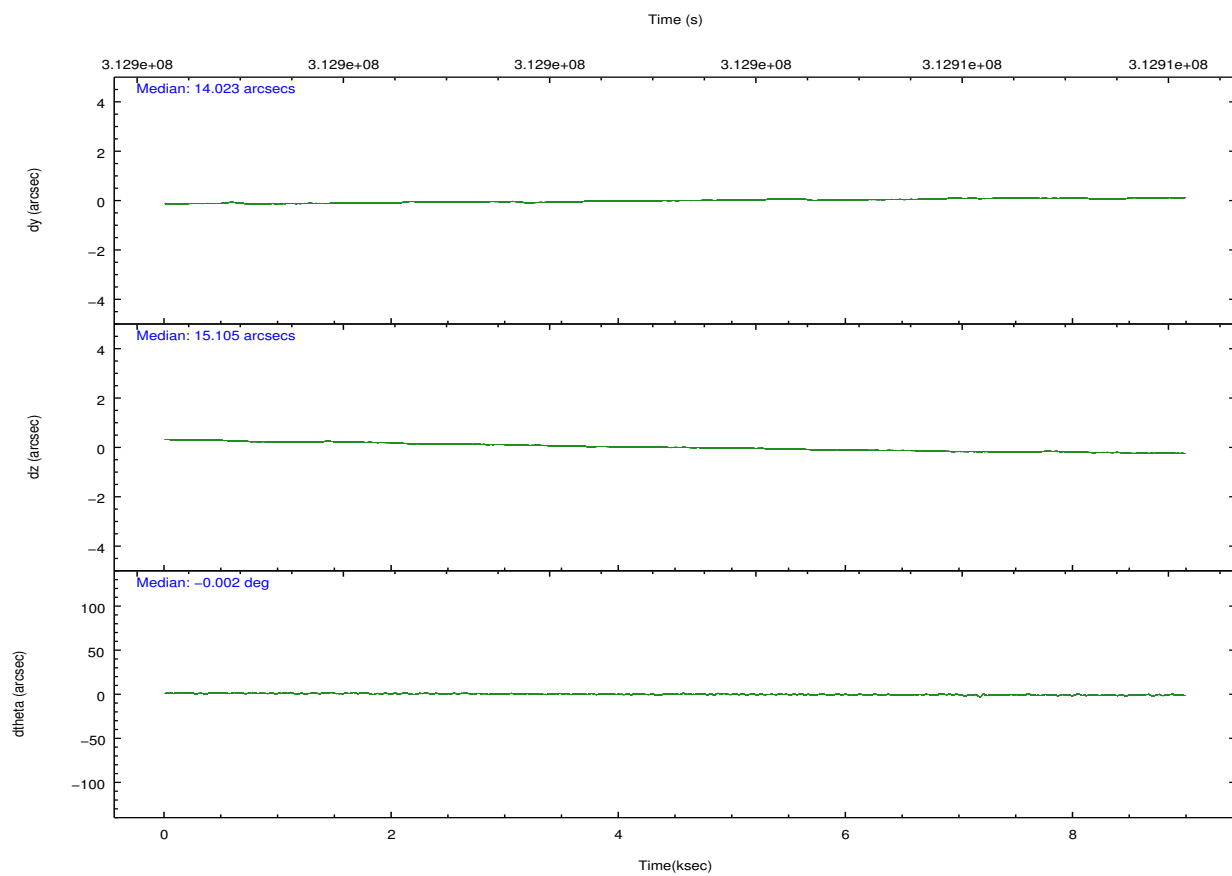
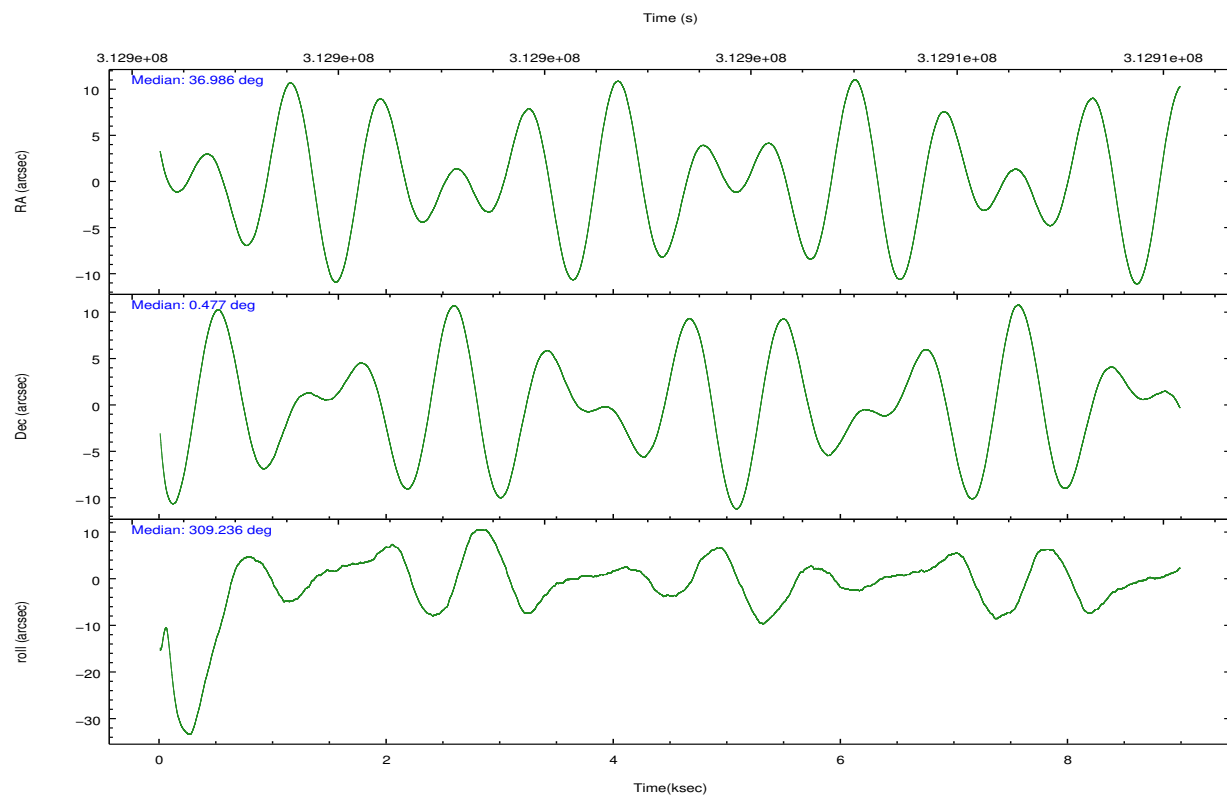
	ccd 0	ccd 1	ccd 2	ccd 3	ccd 6
grade 0 events	2957	3360	3009	2770	3092
	3%	4%	3%	3%	3%
grade 1 events	32	39	38	45	46
	0%	0%	0%	0%	0%
grade 2 events	2054	2215	1913	1711	1991
	2%	2%	2%	2%	2%
grade 3 events	917	1005	911	906	960
	1%	1%	1%	1%	1%
grade 4 events	839	989	889	893	921
	1%	1%	1%	1%	1%
grade 5 events	2844	3206	2722	3369	3303
	3%	4%	3%	4%	3%
grade 6 events	1649	1842	1513	1564	1781
	2%	2%	1%	1%	2%
grade 7 events	66492	67100	77678	71226	75025
	85%	84%	87%	86%	86%

2.2 Compared Parameters

Parameter	Planned	Actual	Parameter	Planned	Actual
Instrument	ACIS	ACIS	Obspar format version number	7	7
Detector	ACIS-01236	ACIS-01236	Obspar file type	PREDICTED	ACTUAL
Grating	NONE	NONE	Obspar update status	NONE	UPDATED
Data mode	VFAINT	VFAINT	CCD I0 on	Y	Y
Observation mode	POINTING	POINTING	CCD I1 on	Y	Y
[deg] Pointing RA	36.960062	36.98580483652428	CCD I2 on	Y	Y
[deg] Pointing Dec	0.486604	0.476967920915401	CCD I3 on	Y	Y
[deg] Pointing Roll	309.030161	309.238623261021	CCD S0 on	N	N
[mm] SIM focus pos	-0.782348	-0.7809083437167272	CCD S1 on	N	N
[mm] SIM defocus	0	0.001439871863259334	CCD S2 on	O1	Y
[mm] SIM translation stage pos	-233.592463	-233.5874344608287	CCD S3 on	N	N
[mm] SIM translation stage offset	0	-0.005018542100998502	CCD S4 on	N	N
[s] Observation start time (MET)	312898911.184000	312897328.18793	CCD S5 on	N	N
Observation start date	2007-12-01T12:20:46	2007-12-01T11:55:28	Number of optional ACIS chips dropped	0	0
[s] Observation end time (MET)	312907711.184000	312907845.20094	On-chip summing requested	N	N
Observation end date	2007-12-01T14:47:26	2007-12-01T14:50:45	Subarray requested	NONE	NONE
Read mode	TIMED	TIMED	Alternating exposures requested	N	N
			[s] Primary exposure time	0.000000	3.1

2.3 Aspect



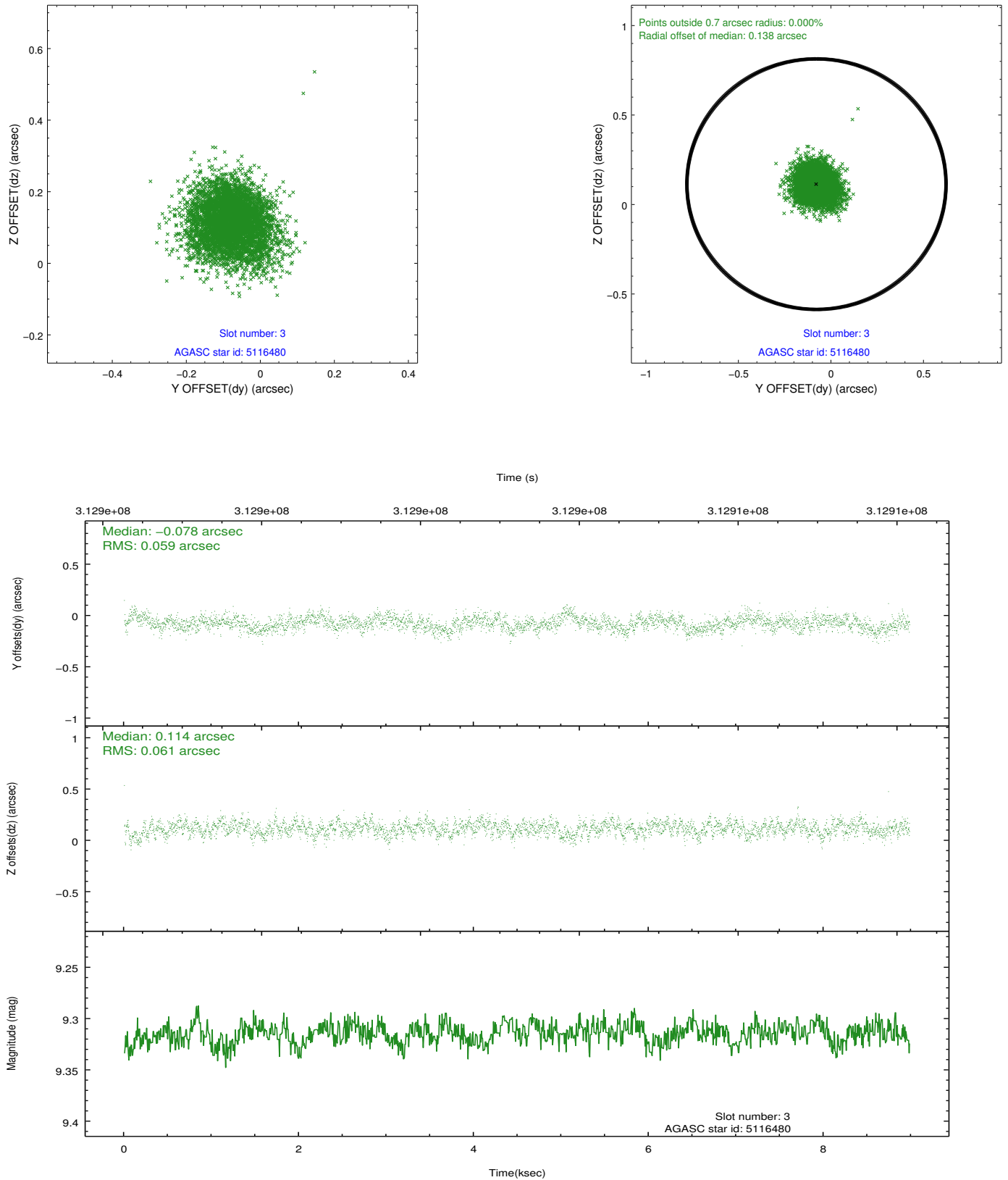


Slot Statistics

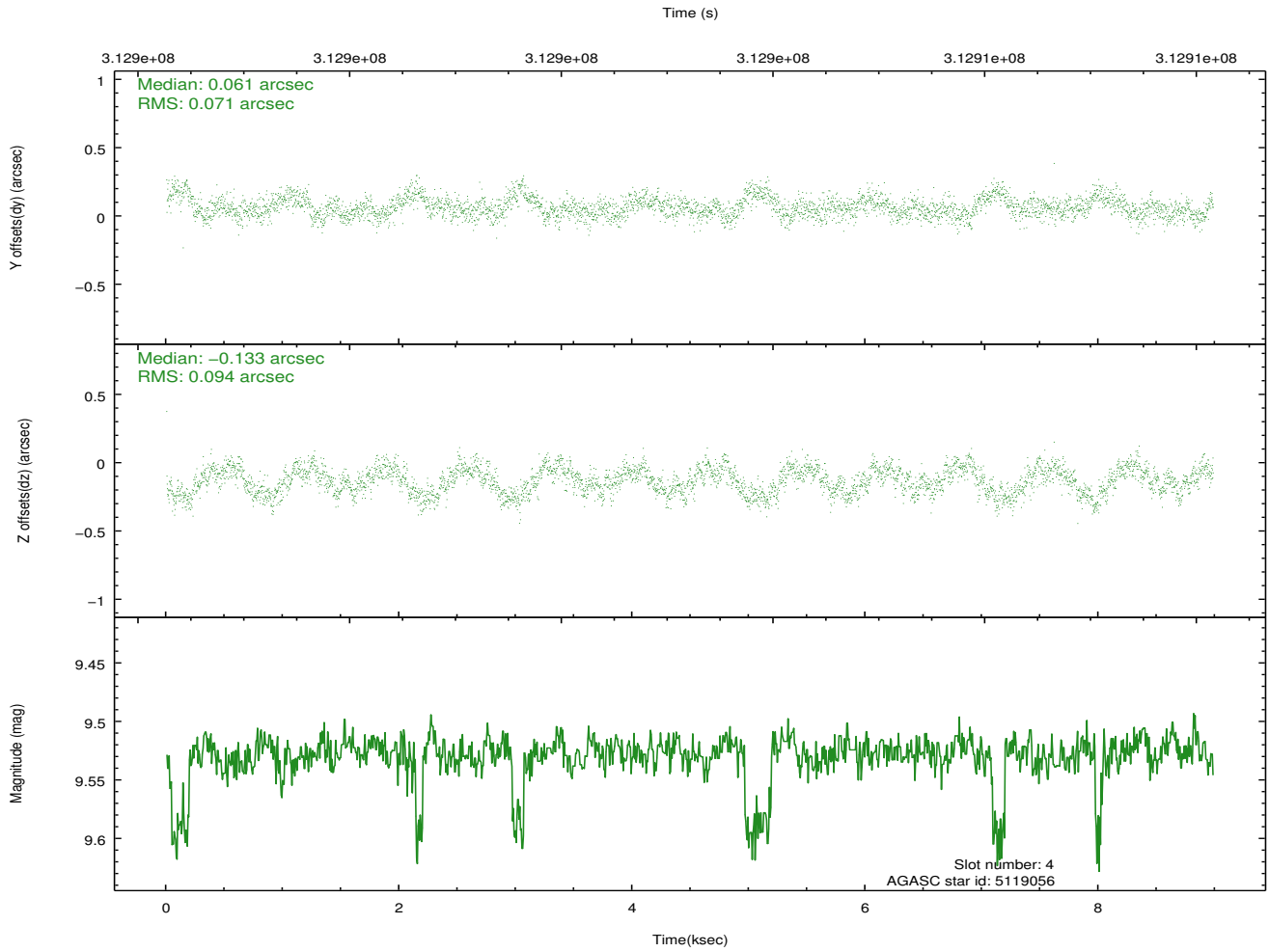
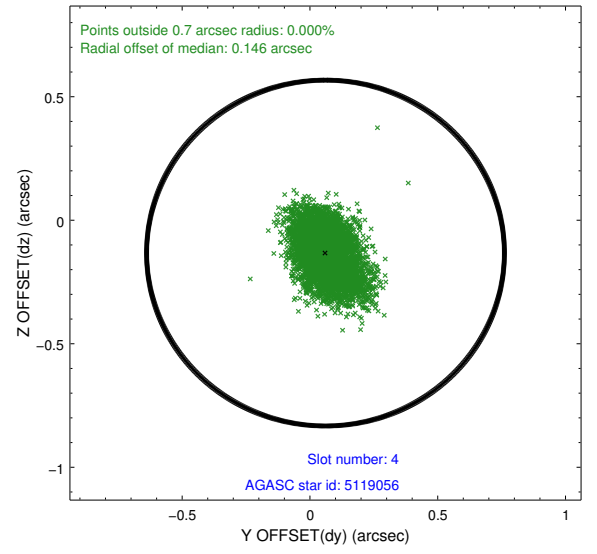
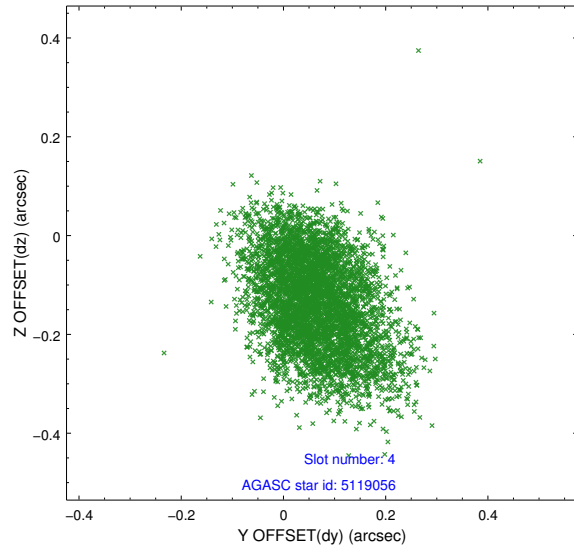
slot	status	id	mag	n_pts	med_dy	med_dz	dr1	dr2	ra	dec	mean_y	mean_z
0	FID	ACIS-I-1	7.23	2191	0.036	-0.019	0.012	0.020	0.000000	0.000000	925.51	-838.74
1	FID	ACIS-I-5	7.22	2191	-0.217	0.037	0.007	0.011	0.000000	0.000000	-1822.52	1058.51
2	FID	ACIS-I-6	7.23	2191	0.090	0.052	0.010	0.016	0.000000	0.000000	390.44	1703.71
3	GUIDE	5116480	9.31	4376	-0.078	0.114	0.090	0.146	36.624607	0.603451	-1086.65	-672.77
4	GUIDE	5119056	9.53	4374	0.061	-0.133	0.124	0.203	36.799344	0.156256	559.74	-1198.50
5	GUIDE	6042384	6.41	4382	-0.152	-0.038	0.100	0.166	37.688348	0.255749	2296.92	1512.81
6	GUIDE	6032088	9.13	4382	0.076	0.015	0.104	0.175	37.532714	0.102881	2372.34	732.22
7	GUIDE	5116208	10.95	4370	0.080	0.035	0.295	0.462	36.356201	0.600354	-1686.03	-1430.41

2.4 Star Slots

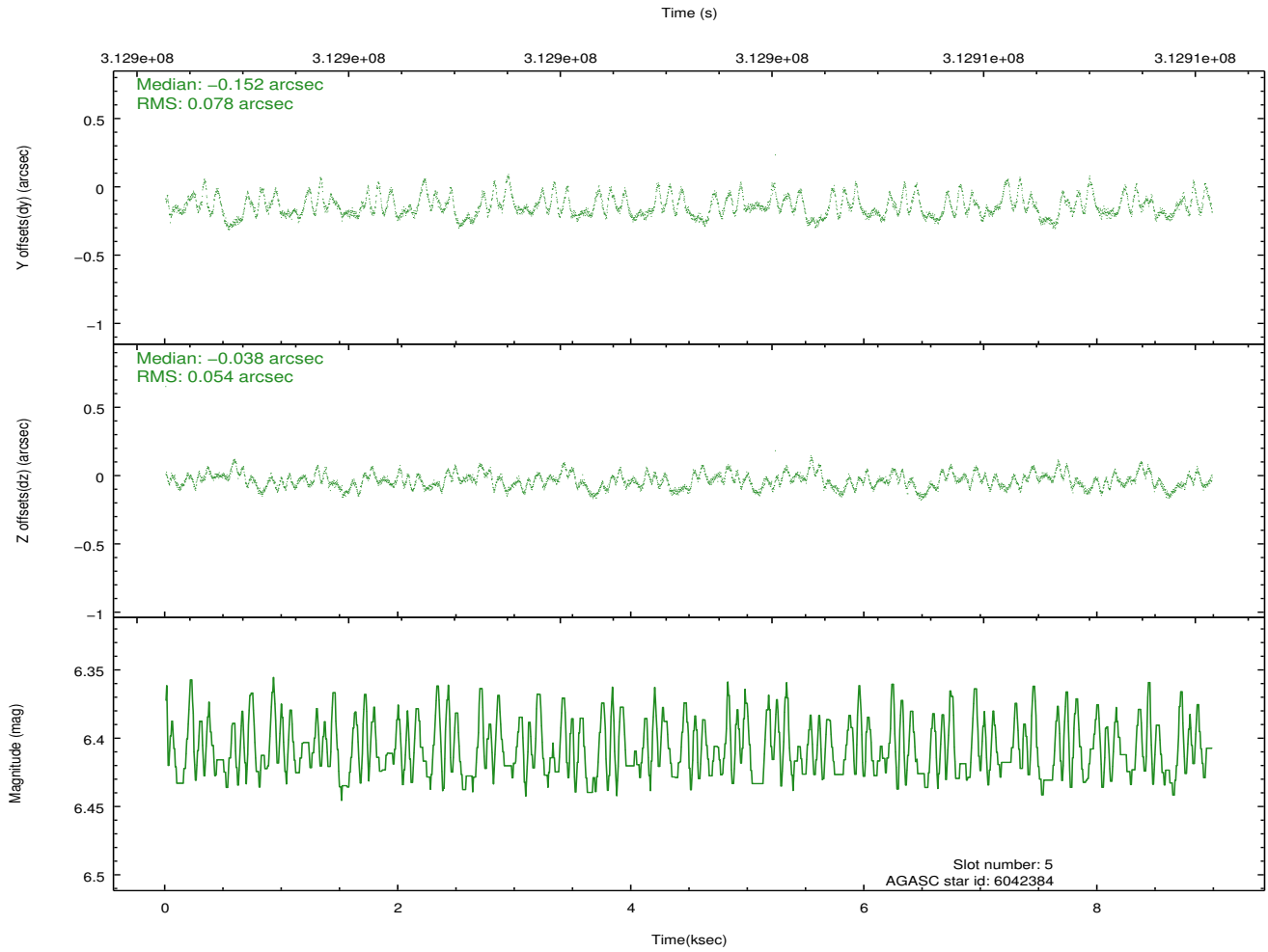
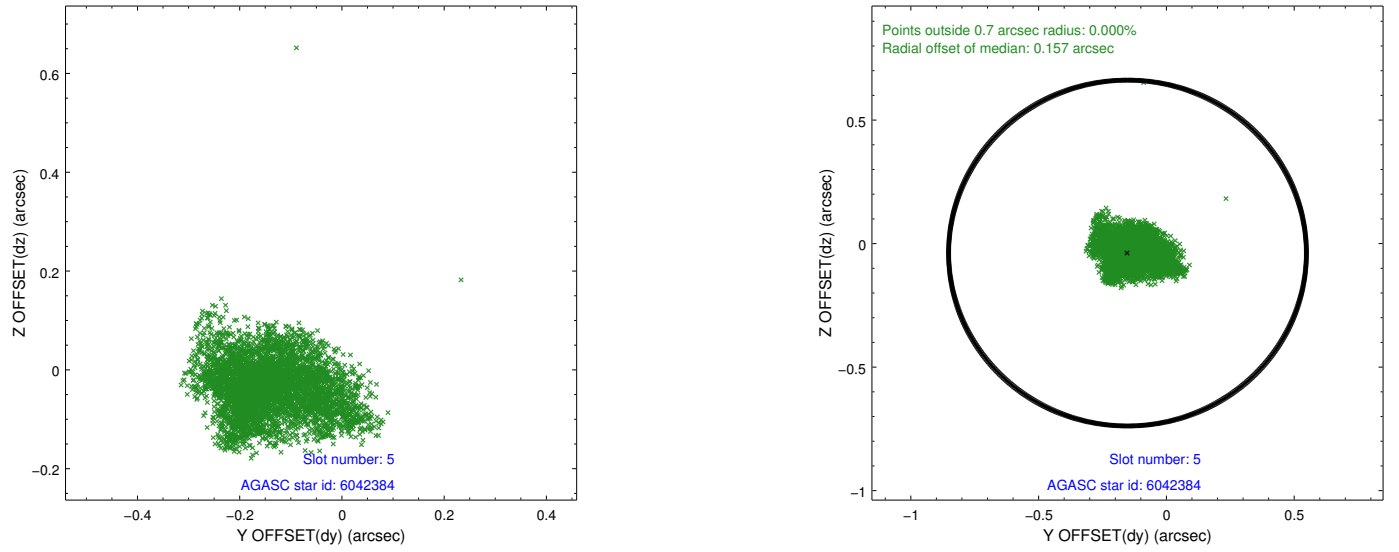
2.4.1 Slot 3



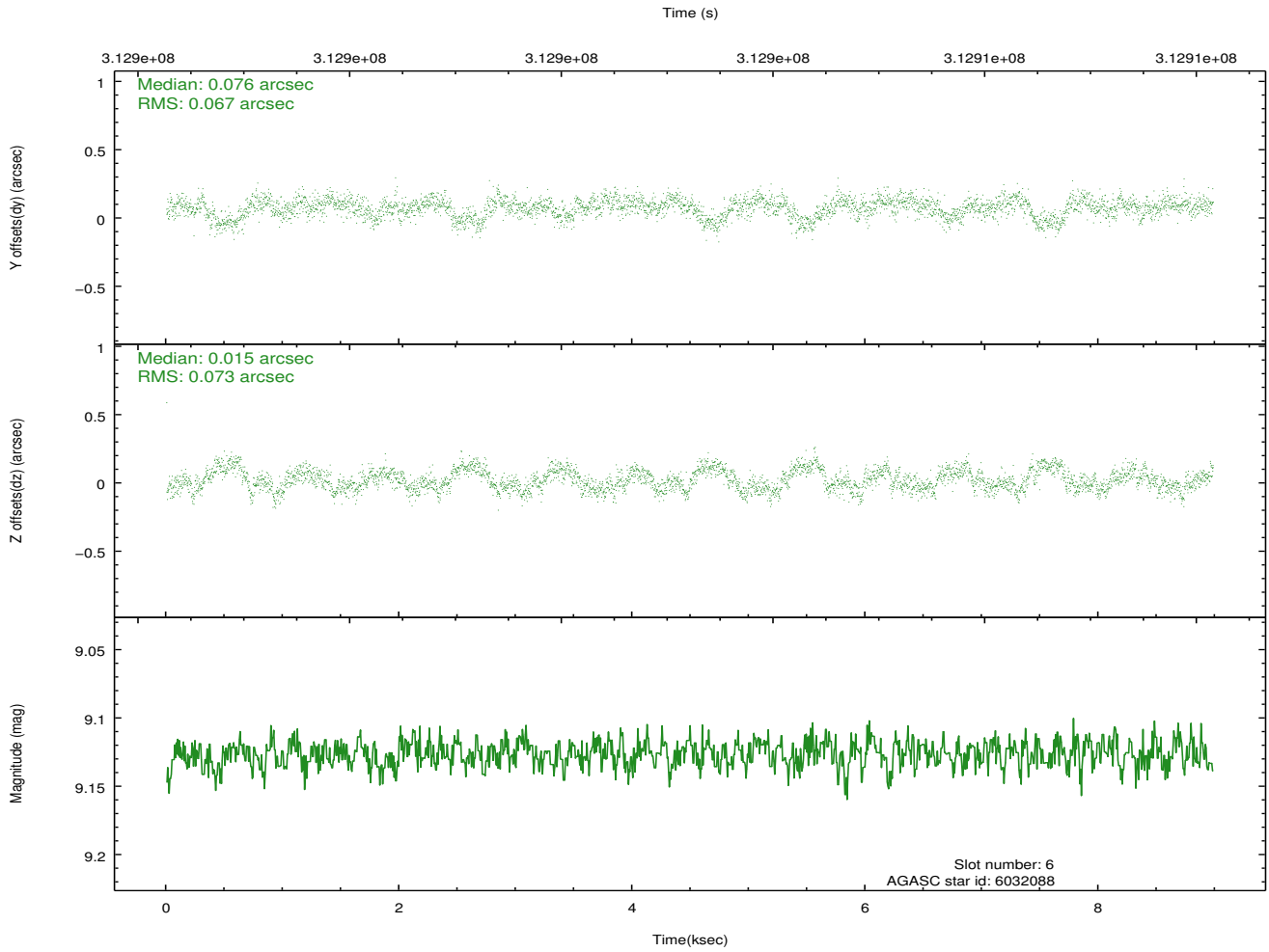
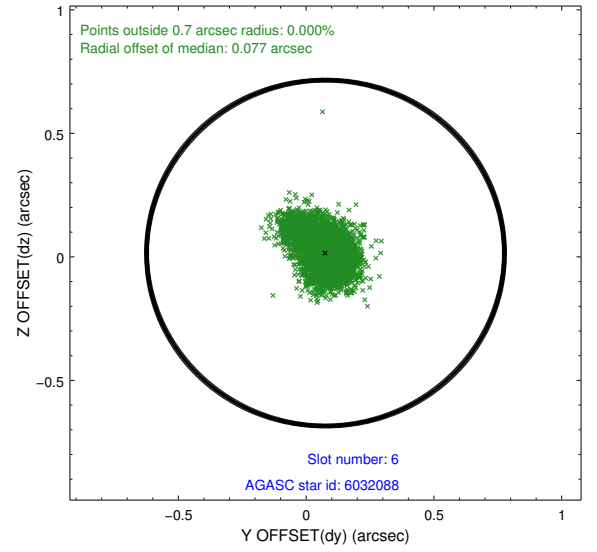
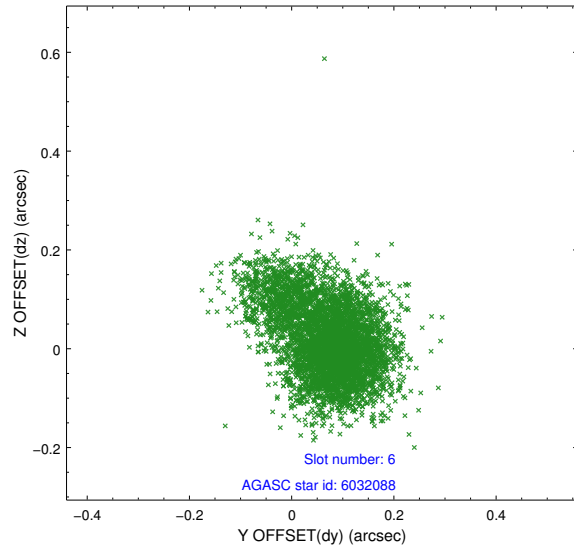
2.4.2 Slot 4



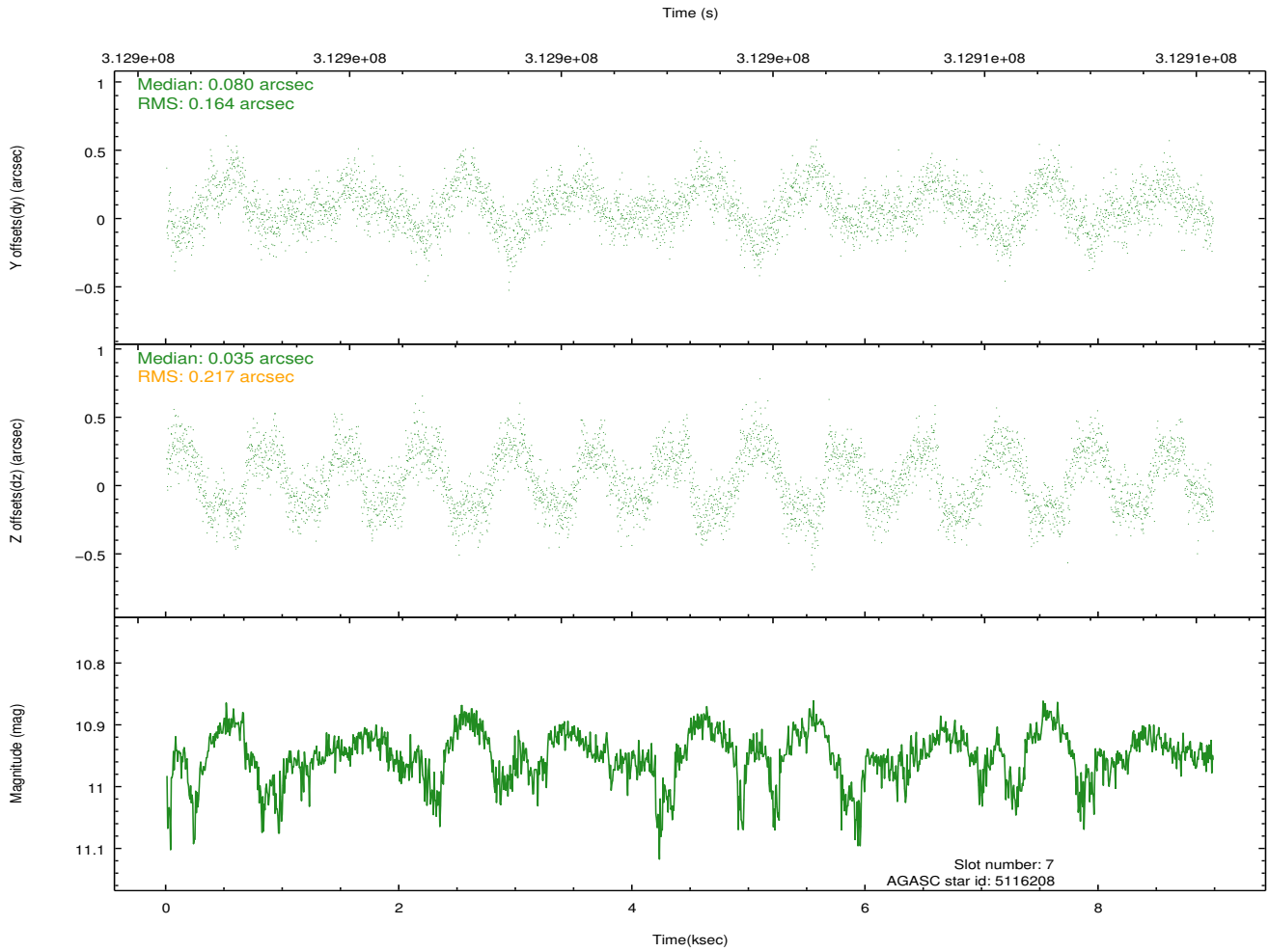
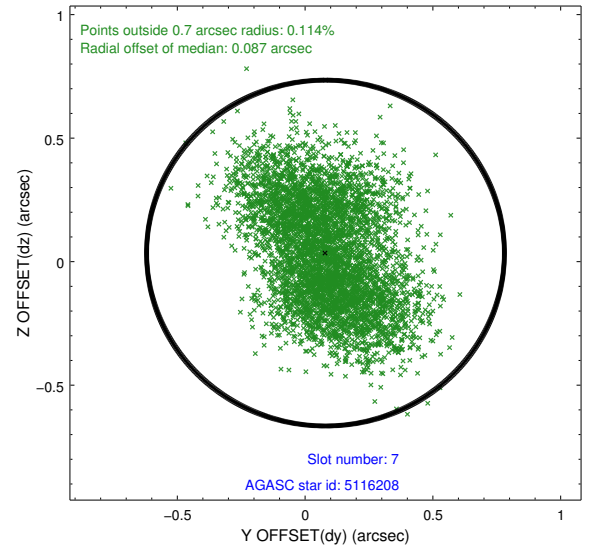
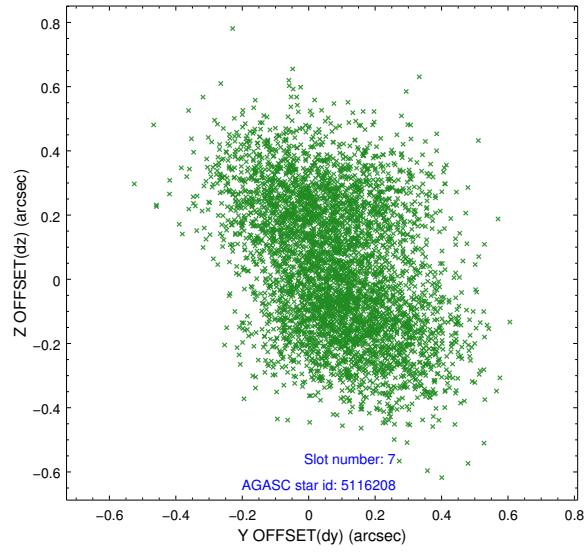
2.4.3 Slot 5



2.4.4 Slot 6

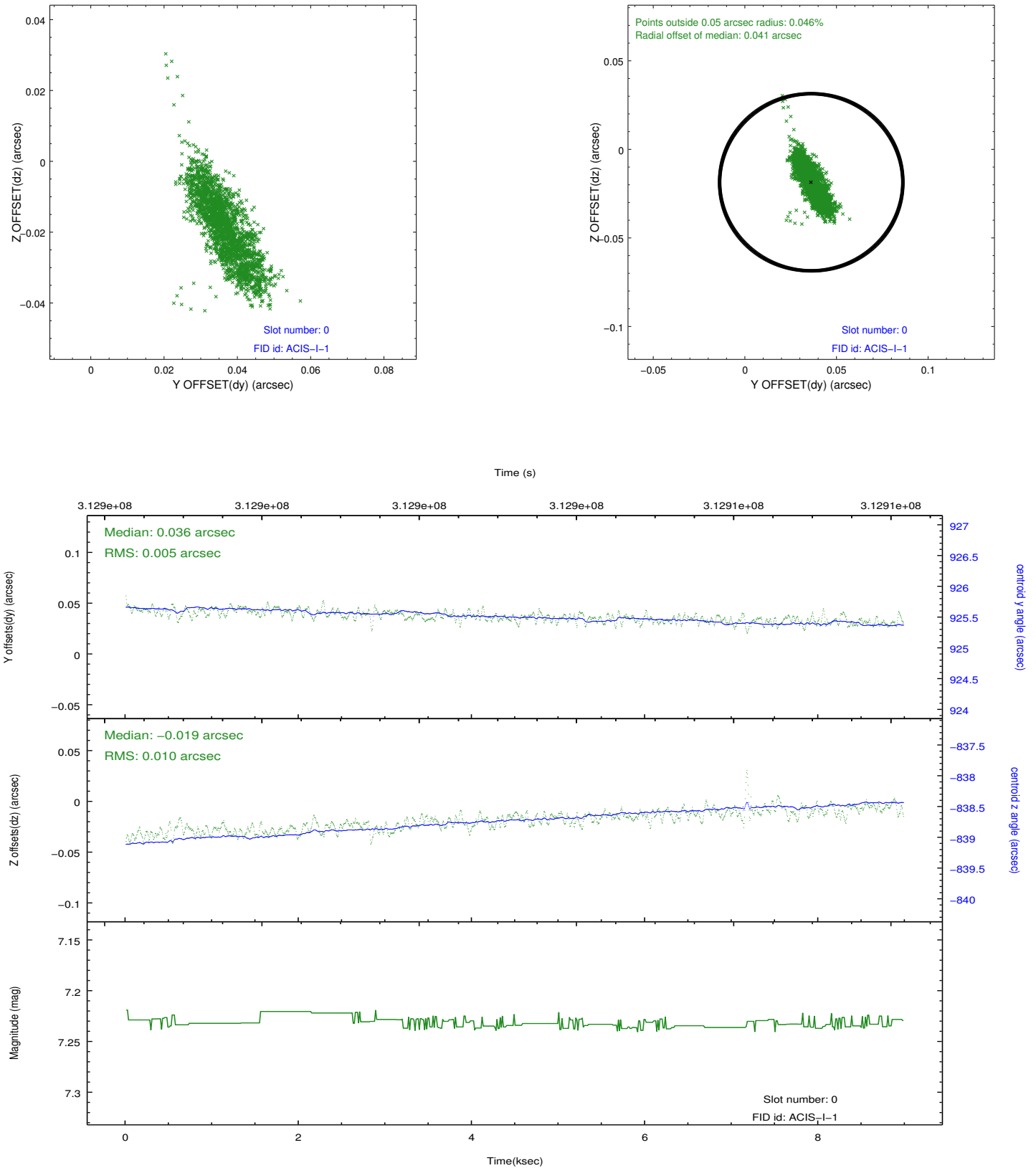


2.4.5 Slot 7

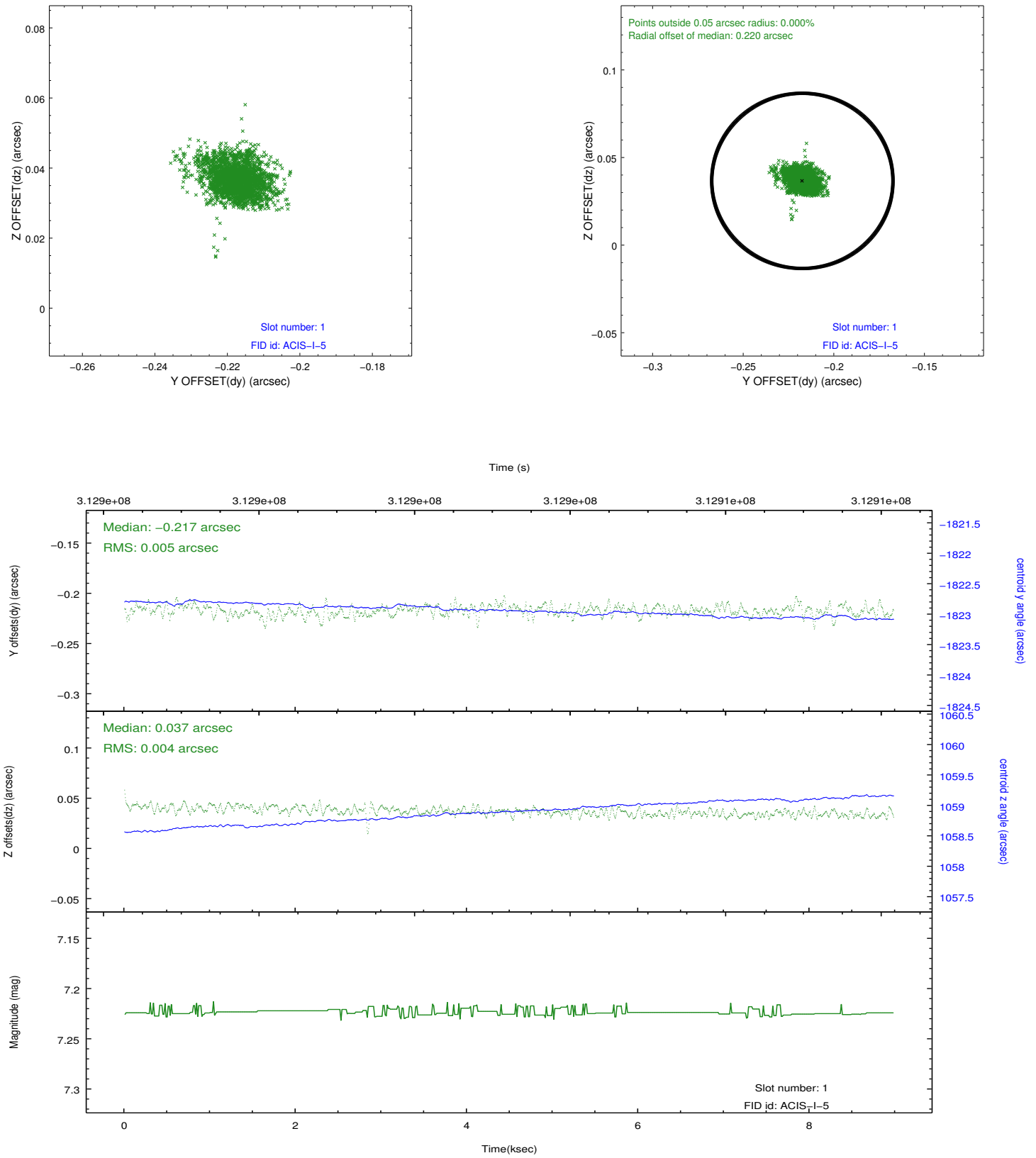


2.5 FID Slots

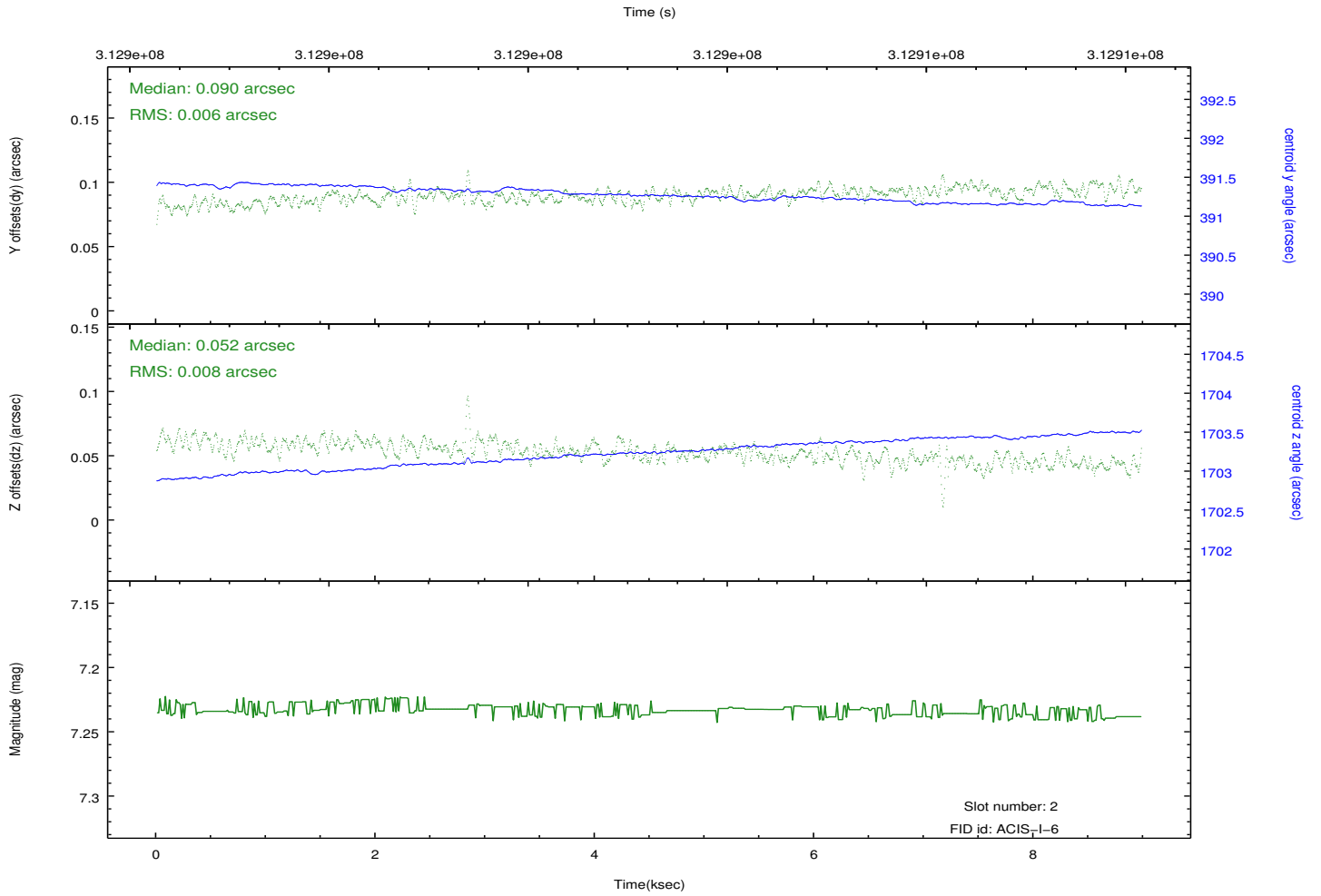
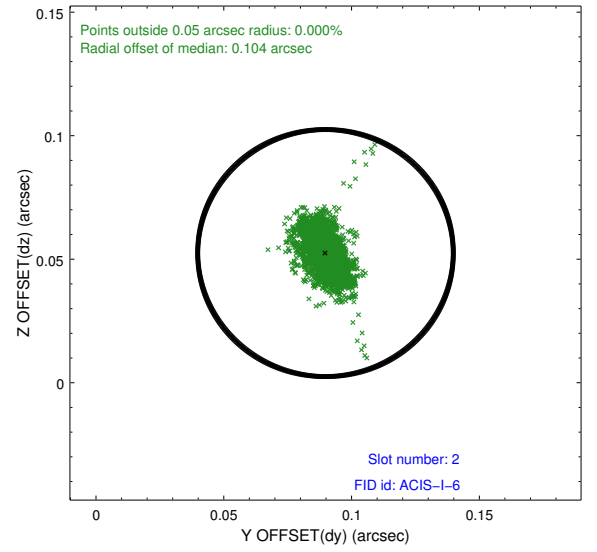
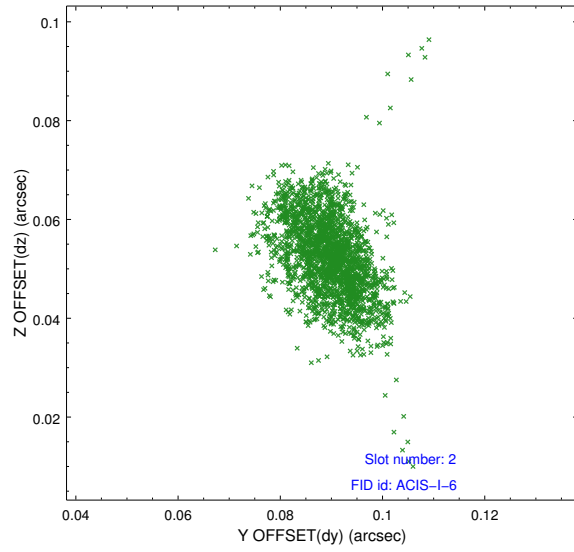
2.5.1 Slot 0



2.5.2 Slot 1



2.5.3 Slot 2



A Summary

A.1 Status

V&V Scientist	Jen Lauer
V&V Date (YYYY-MM-DD)	2012.05.07
V&V Edition	1
V&V Disposition and Status	OK
V&V Charge Time	8.97450006

A.2 Comments