

# V&V Reference Report

## L2 ASCDS Version : 8.4.4

Observation 7776 - L2 Version 2  
Chandra X-Ray Center

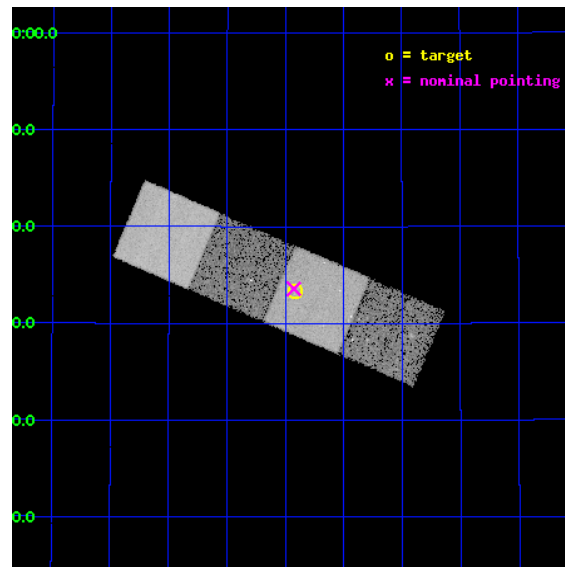
L2 Processing Date : May 4 2012

## Contents

<b>1</b>	<b>Front</b>	<b>2</b>
<b>2</b>	<b>OBI</b>	<b>3</b>
2.1	OBI . . . . .	3
2.1.1	Images . . . . .	3
2.1.2	Bias . . . . .	3
2.1.3	Parameters . . . . .	4
2.1.4	Events . . . . .	4
2.2	Compared Parameters . . . . .	5
2.3	Aspect . . . . .	6
2.4	Star Slots . . . . .	9
2.4.1	Slot 3 . . . . .	9
2.4.2	Slot 4 . . . . .	10
2.4.3	Slot 5 . . . . .	11
2.4.4	Slot 6 . . . . .	12
2.4.5	Slot 7 . . . . .	13
2.5	FID Slots . . . . .	14
2.5.1	Slot 0 . . . . .	14
2.5.2	Slot 1 . . . . .	15
2.5.3	Slot 2 . . . . .	16
<b>A</b>	<b>Summary</b>	<b>17</b>
A.1	Status . . . . .	17
A.2	Comments . . . . .	17

# 1 Front

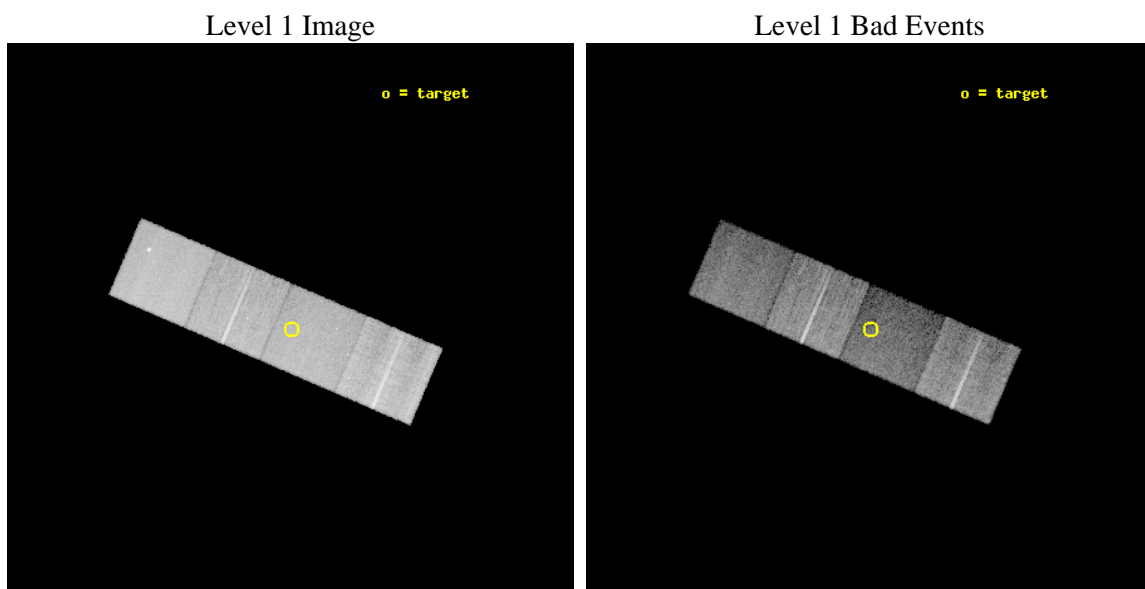
seq_num	701444	Sequence number
obs_id	7776	Observation id
title	Are Compton-thick quasars hidden among the population of heavily obscured Spitzer-selected AGN?	Proposal title
observer	Dr Cristian Vignali	Principal investigator
object	SST24 J142924.83+353320.3	Source name
dtcycle	0	&#160
cycle	P	events from which exps? Prim/Second/Both
ra_targ	217.353333	Observer's specified target RA [deg]
dec_targ	35.555639	Observer's specified target Dec [deg]
ra_nom	217.35676422684	Nominal RA [deg]
dec_nom	35.559599217549	Nominal Dec [deg]
roll_nom	23.154627080354	Nominal Roll [deg]
revision	2	Processing version of data
ontime	14051.805440962	Sum of GTIs [s]
livetime	13868.208258087	Livetime [s]
ontime5	14051.764400959	Sum of GTIs [s]
ontime6	14048.582370698	Sum of GTIs [s]
ontime7	14051.805440962	Sum of GTIs [s]
ontime8	14051.682320952	Sum of GTIs [s]
l2events	133305	Number of level 2 events



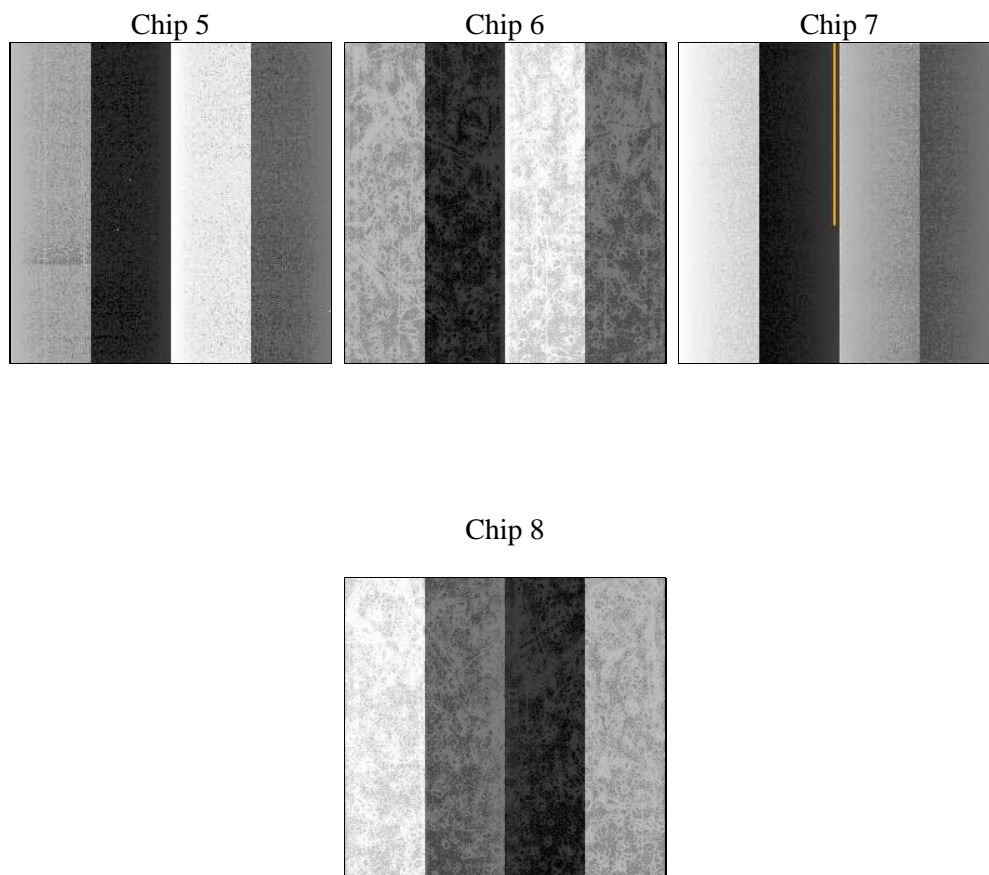
## 2 OBI

### 2.1 OBI

#### 2.1.1 Images



#### 2.1.2 Bias



### 2.1.3 Parameters

obi_num	0	Obi number	sched_exp_time	14000.000000	[s] Scheduled observation exposure time
ascdsver	8.4.4	Processing system revision	ontime	14051.805440962	Sum of GTIs [s]
caldsver	4.4.9	&#160	ontime5	14051.764400959	Sum of GTIs [s]
date	2012-05-04T14:56:43	Date and time of file creation	ontime6	14048.582370698	Sum of GTIs [s]
revision	2	Processing version of data	ontime7	14051.805440962	Sum of GTIs [s]
			ontime8	14051.682320952	Sum of GTIs [s]
			l1events	469739	Number of level 1 events

### 2.1.4 Events

	ccd 5	ccd 6	ccd 7	ccd 8
level 1 events	129772	106629	100816	132522
rejected events	61276	95763	50717	98827
rejected %	47%	89%	50%	74%

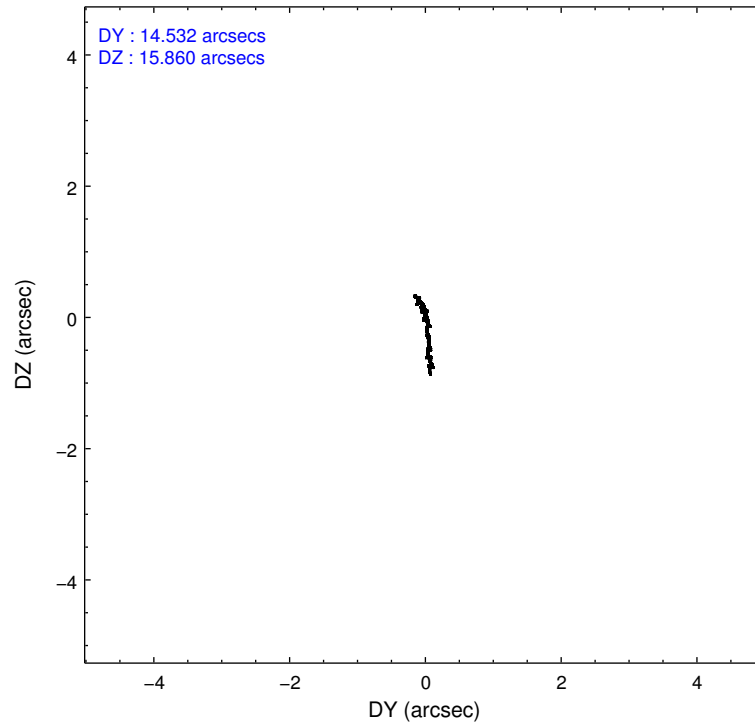
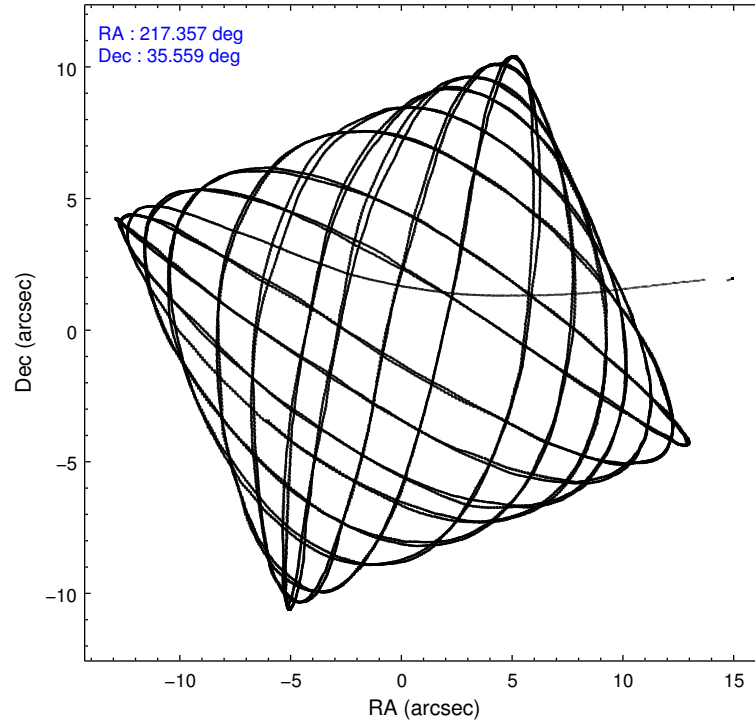
	ccd 5	ccd 6	ccd 7	ccd 8
grade 0 events	6174	4068	5340	9470
	4%	3%	5%	7%
grade 1 events	276	57	178	95
	0%	0%	0%	0%
grade 2 events	21241	2447	10586	7942
	16%	2%	10%	5%
grade 3 events	3250	1163	4911	3690
	2%	1%	4%	2%
grade 4 events	2966	1121	4760	3446
	2%	1%	4%	2%
grade 5 events	10603	3644	10825	5733
	8%	3%	10%	4%
grade 6 events	34875	2067	24513	9148
	26%	1%	24%	6%
grade 7 events	50387	92062	39703	92998
	38%	86%	39%	70%

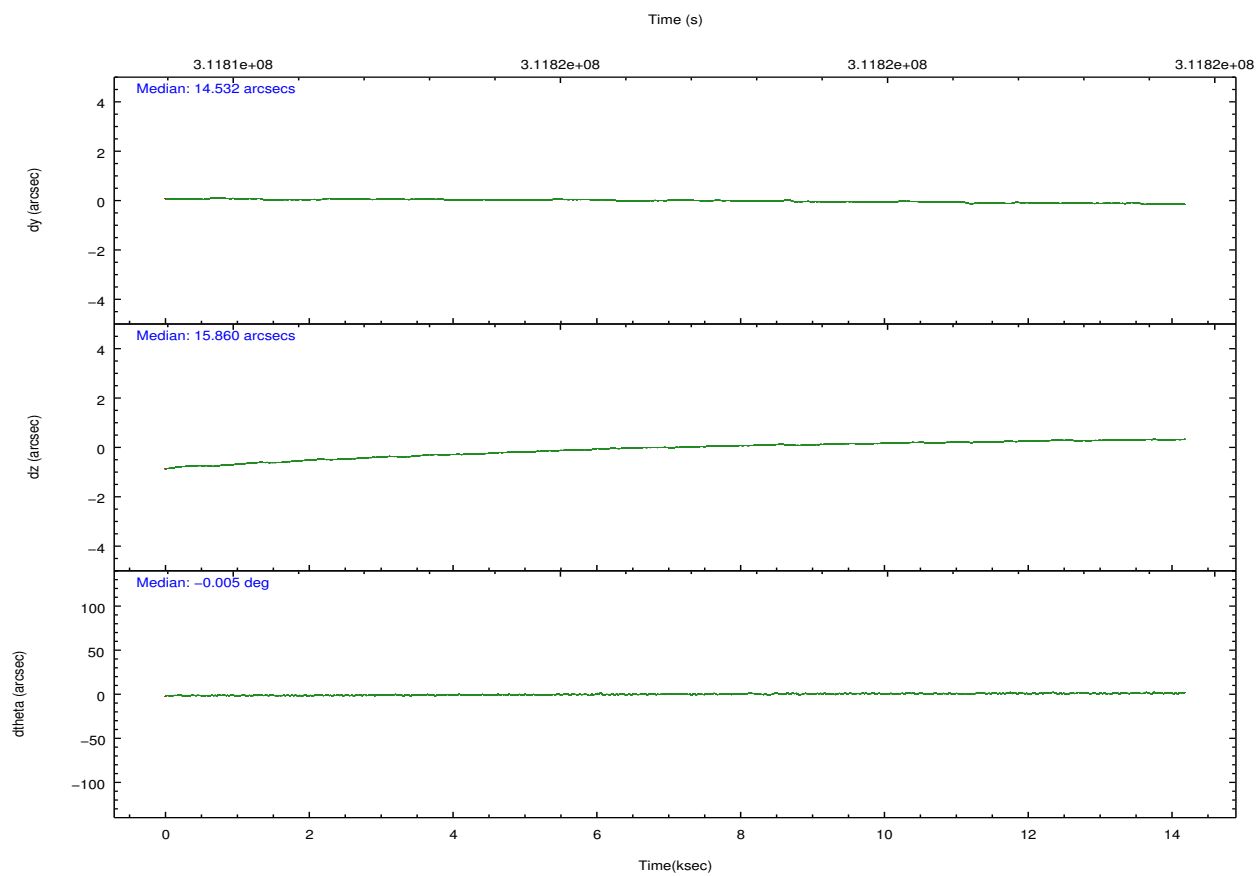
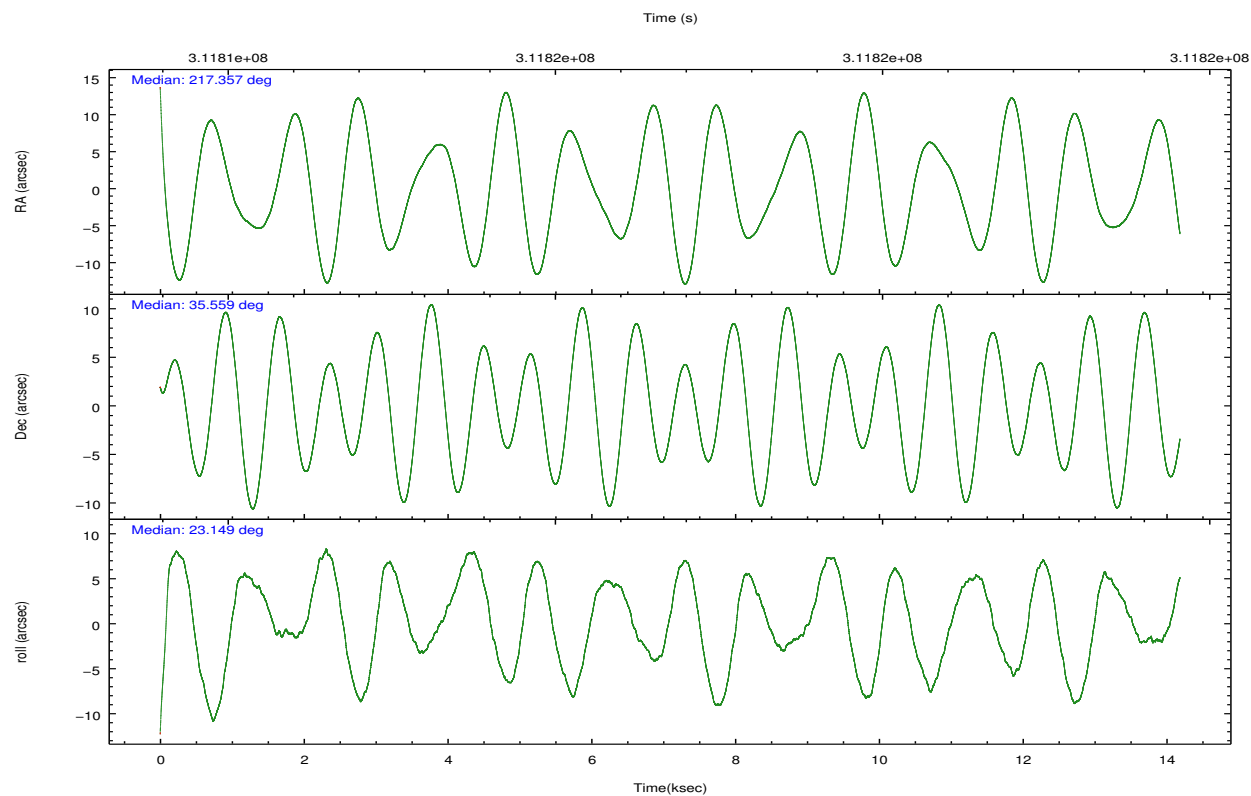


## 2.2 Compared Parameters

Parameter	Planned	Actual	Parameter	Planned	Actual
Instrument	ACIS	ACIS	Obspar format version number	7	7
Detector	ACIS-5678	ACIS-5678	Obspar file type	PREDICTED	ACTUAL
Grating	NONE	NONE	Obspar update status	NONE	UPDATED
Data mode	VFAINT	VFAINT	Number of optional ACIS chips dropped	0	0
Observation mode	POINTING	POINTING	On-chip summing requested	N	N
[deg] Pointing RA	217.336984	217.3567642268356	Subarray requested	NONE	NONE
[deg] Pointing Dec	35.537495	35.55959921754872	Alternating exposures requested	N	N
[deg] Pointing Roll	23.009509	23.15462708035437	[s] Primary exposure time	0.000000	3.1
[mm] SIM focus pos	-0.684267	-0.6828225247311905			
[mm] SIM defocus	0	0.001444936568705701			
[mm] SIM translation stage pos	-190.132523	-190.1425803651734			
[mm] SIM translation stage offset	0	0.01005778216563158			
[s] Observation start time (MET)	311809844.184000	311808971.34784			
Observation start date	2007-11-18T21:49:39	2007-11-18T21:36:11			
[s] Observation end time (MET)	311823844.184000	311824450.38609			
Observation end date	2007-11-19T01:42:59	2007-11-19T01:54:10			
Read mode	TIMED	TIMED			

## 2.3 Aspect



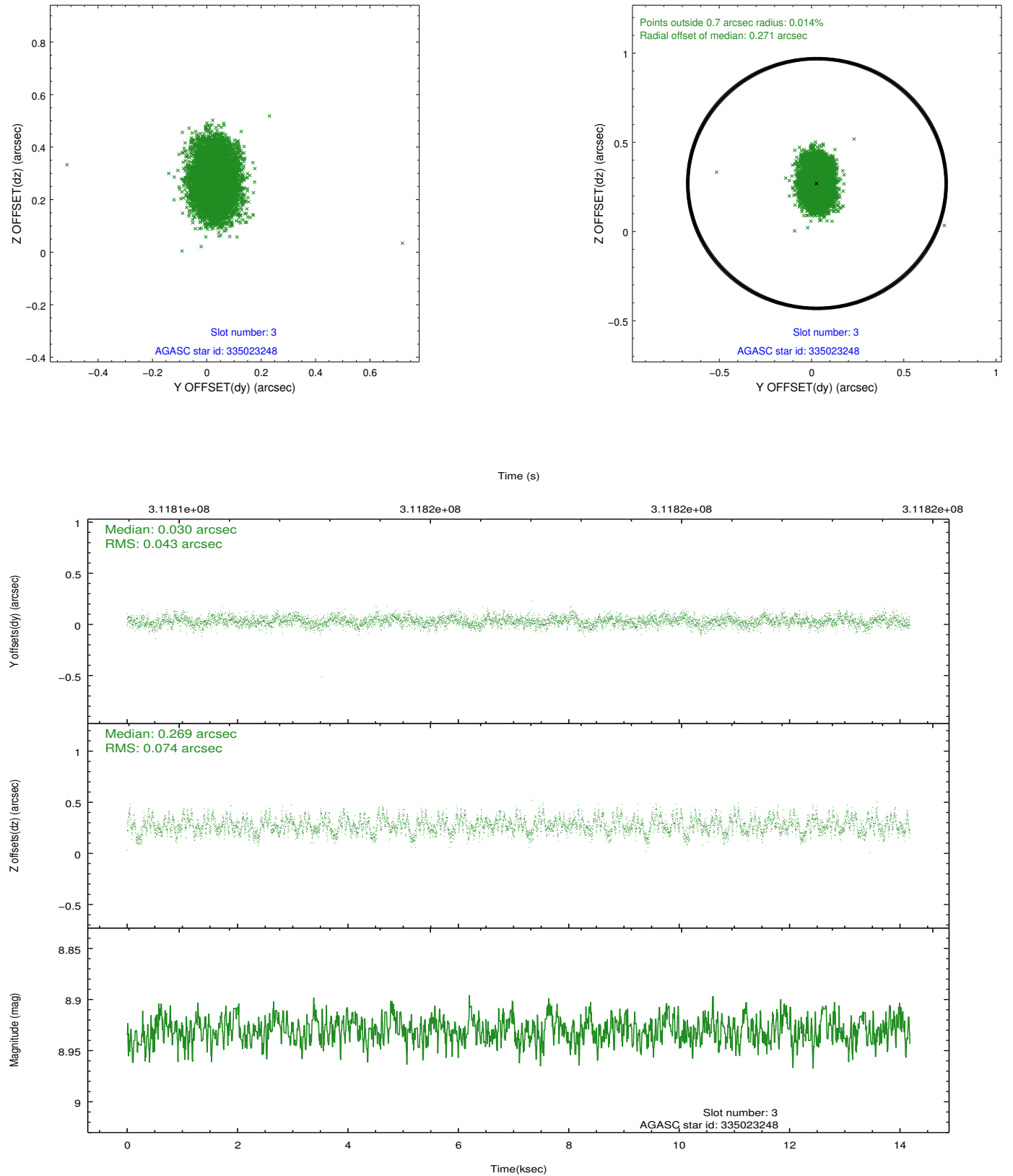


### Slot Statistics

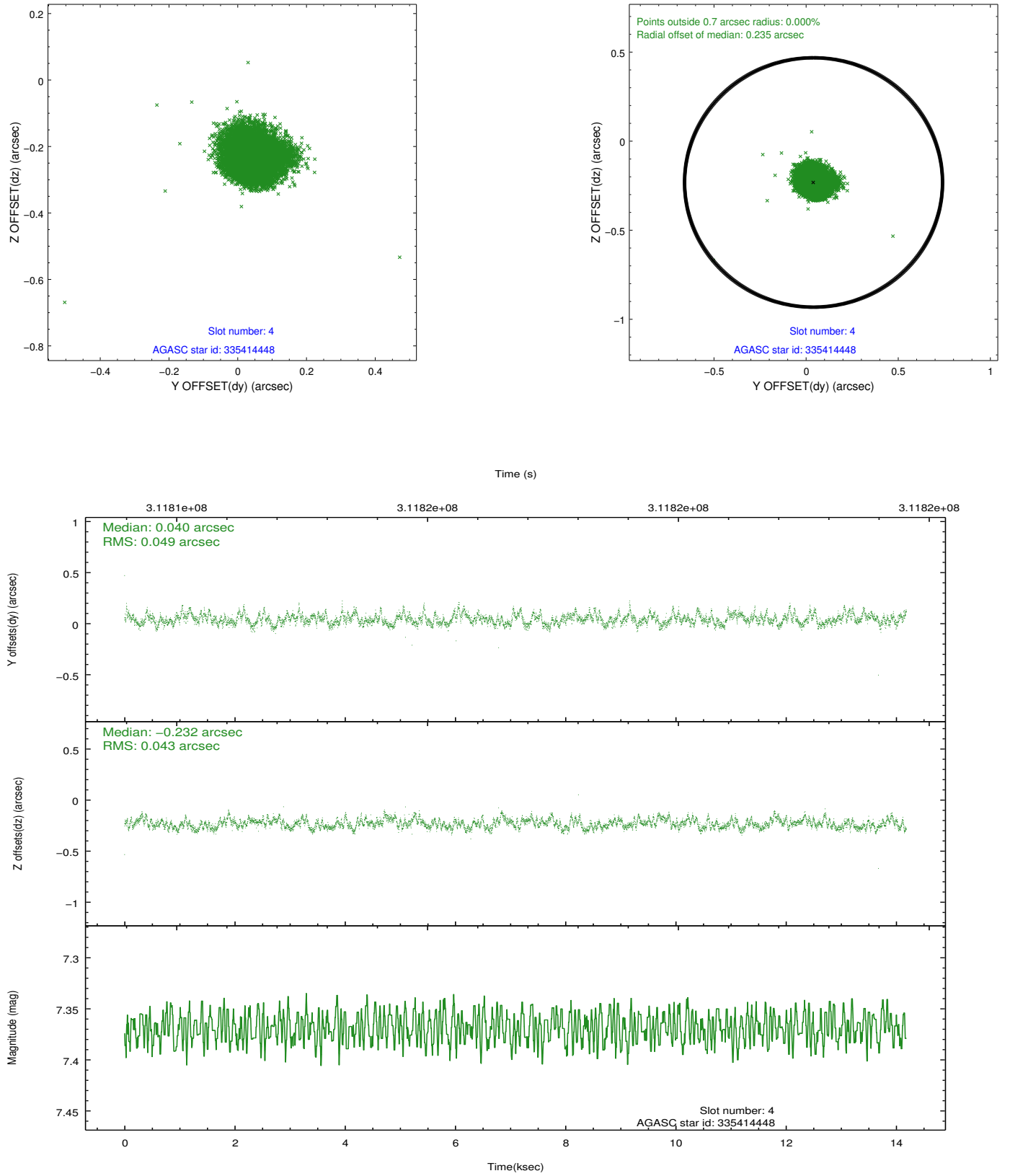
slot	status	id	mag	n_pts	med_dy	med_dz	dr1	dr2	ra	dec	mean_y	mean_z
0	FID	ACIS-S-1	7.18	3460	0.080	-0.089	0.013	0.033	0.000000	0.000000	928.64	-1732.84
1	FID	ACIS-S-5	7.22	3460	-0.158	0.037	0.009	0.013	0.000000	0.000000	-1820.41	164.50
2	FID	ACIS-S-6	7.32	3460	0.058	0.062	0.011	0.022	0.000000	0.000000	393.82	808.86
3	GUIDE	335023248	8.93	6916	0.030	0.269	0.090	0.151	217.634832	34.944512	-24.34	-2306.66
4	GUIDE	335414448	7.37	6918	0.040	-0.232	0.069	0.107	216.992261	35.577204	-872.00	526.57
5	GUIDE	335417968	9.40	6916	-0.032	0.102	0.116	0.182	217.358149	35.055285	-620.86	-1621.80
6	GUIDE	335419120	9.63	6912	-0.084	-0.024	0.105	0.171	216.521861	35.833546	-1769.39	1919.90
7	GUIDE	335421608	9.19	6905	0.045	-0.108	0.080	0.129	217.691874	36.359353	2103.87	2323.95

## 2.4 Star Slots

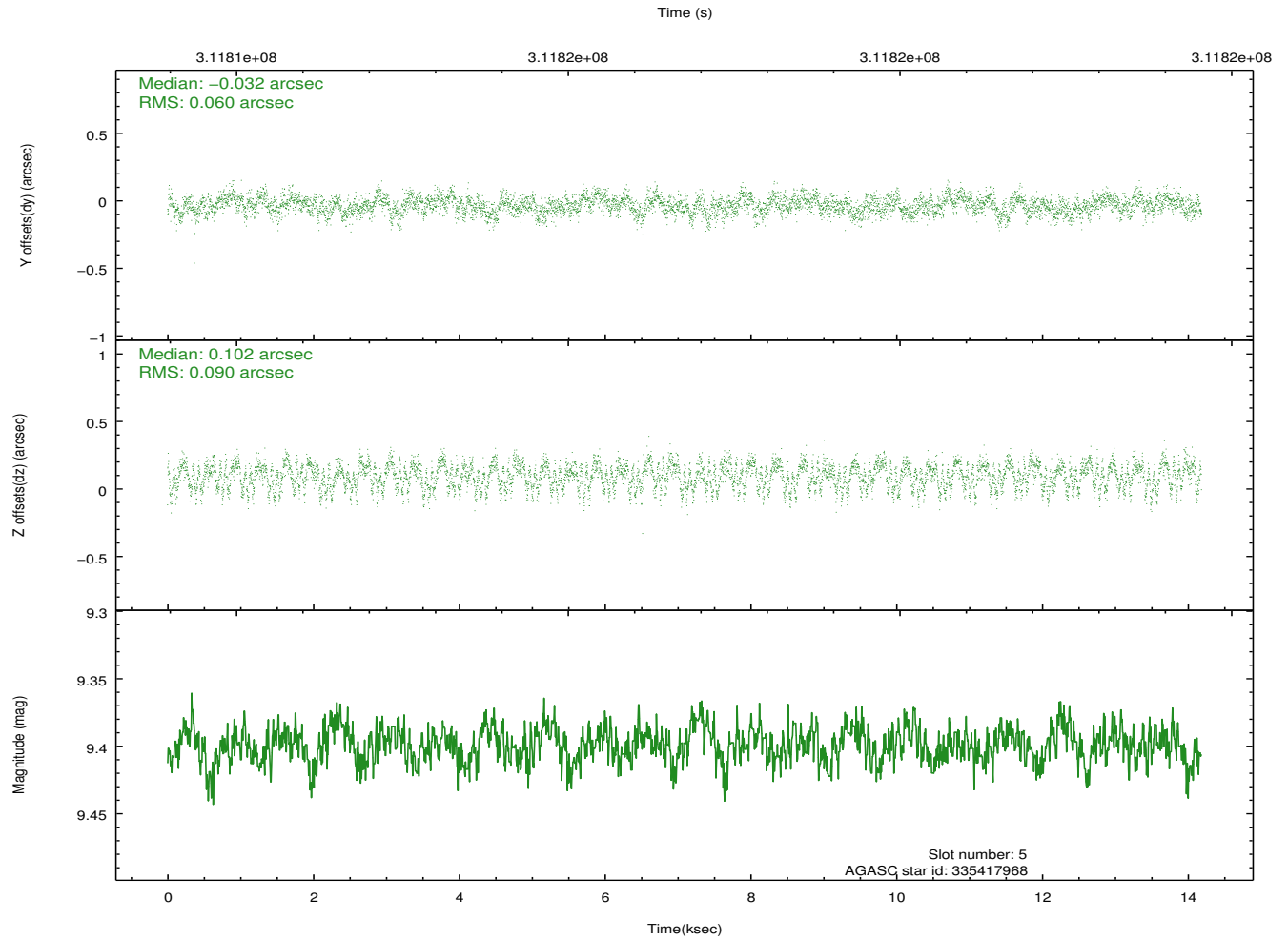
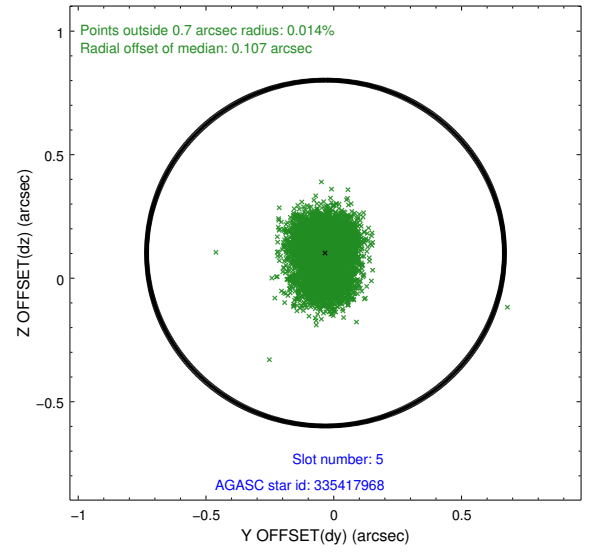
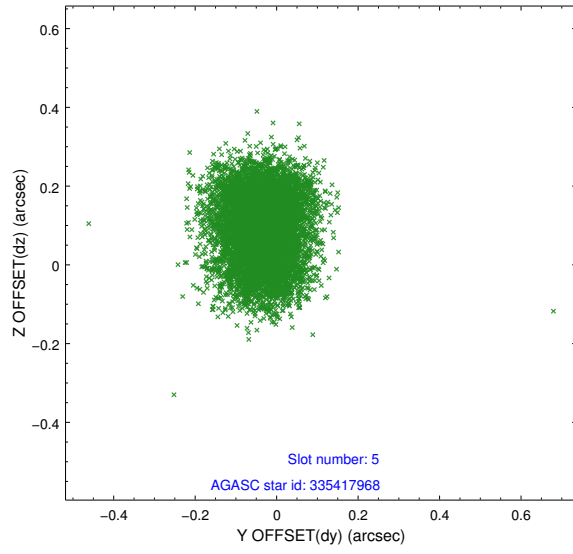
### 2.4.1 Slot 3



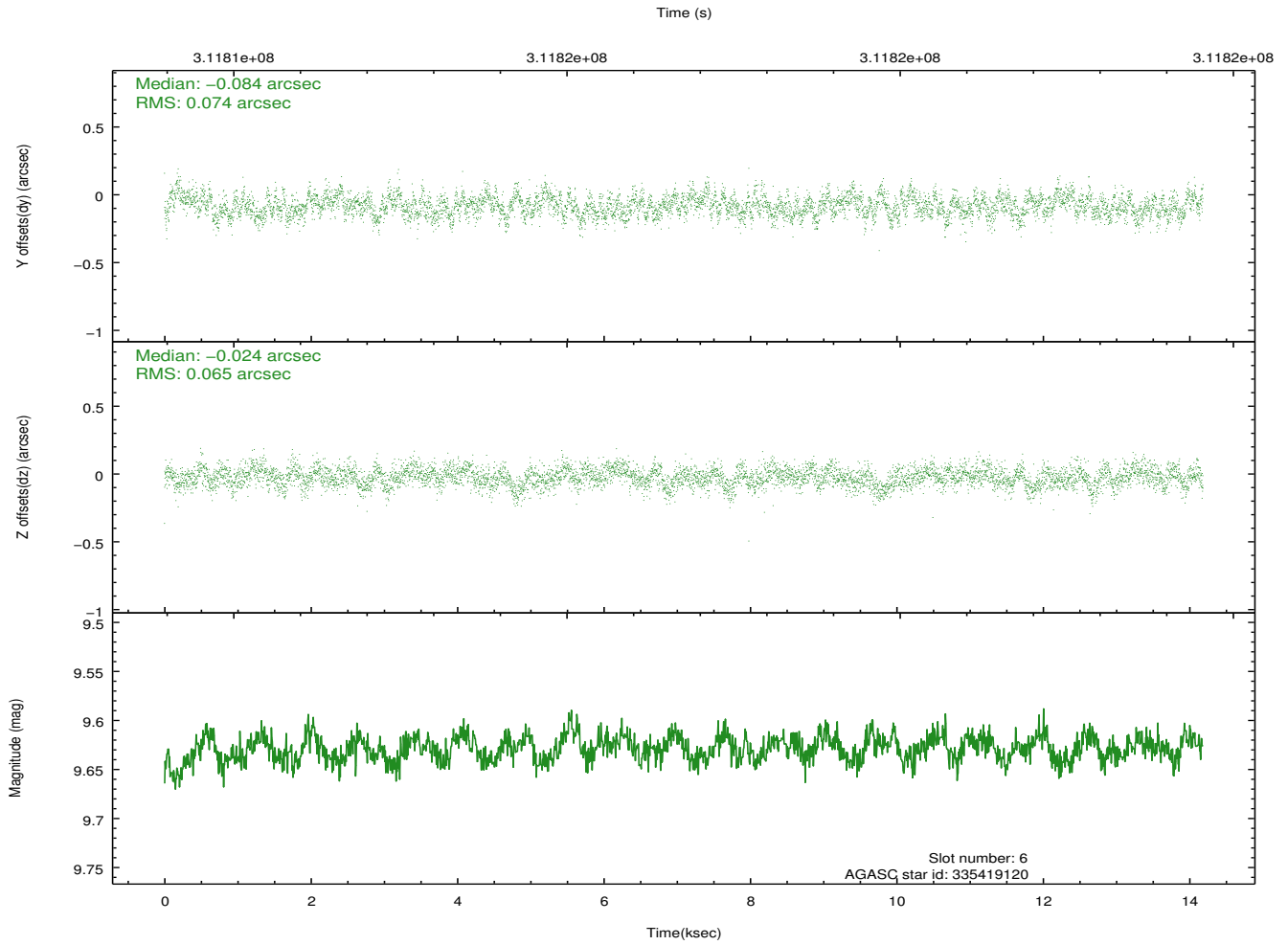
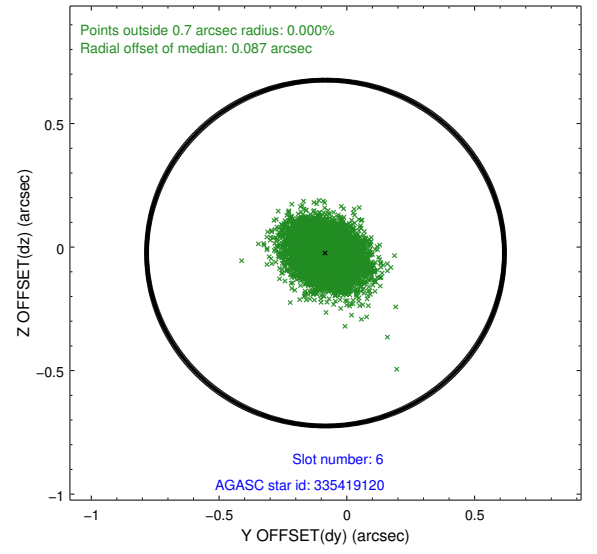
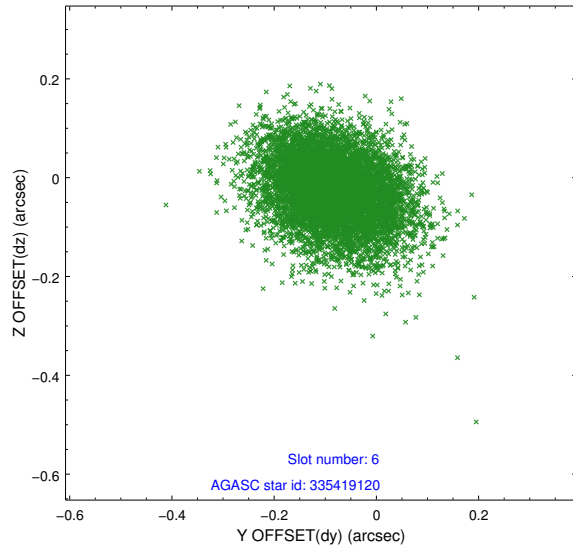
## 2.4.2 Slot 4



### 2.4.3 Slot 5

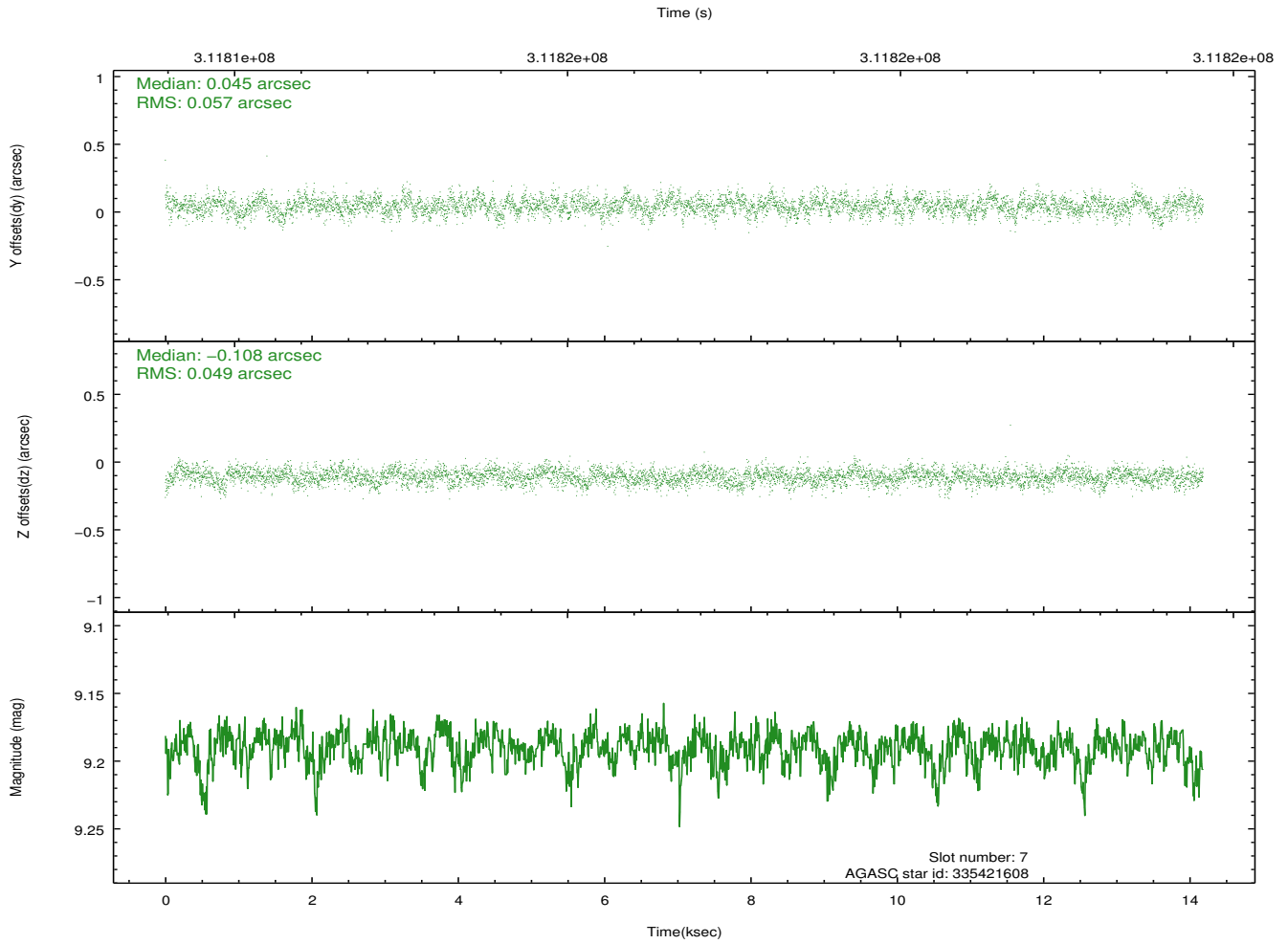
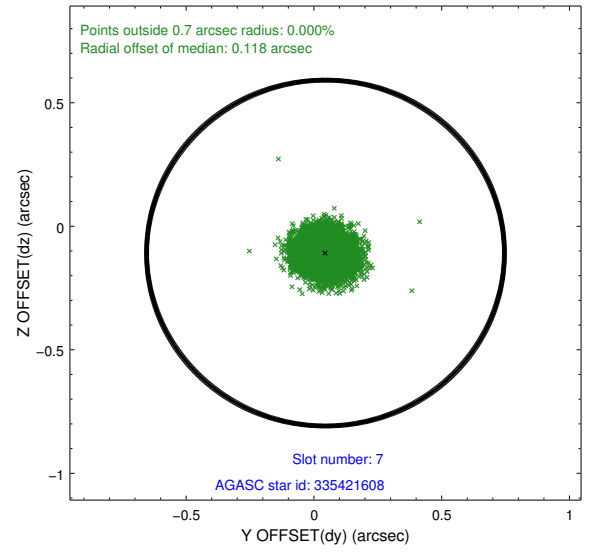
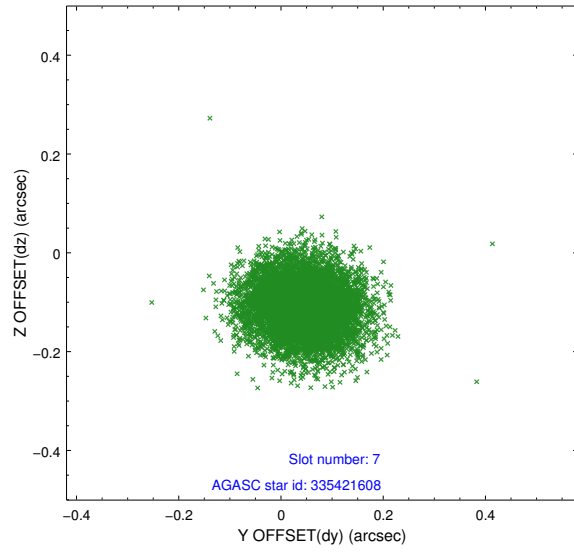


## 2.4.4 Slot 6



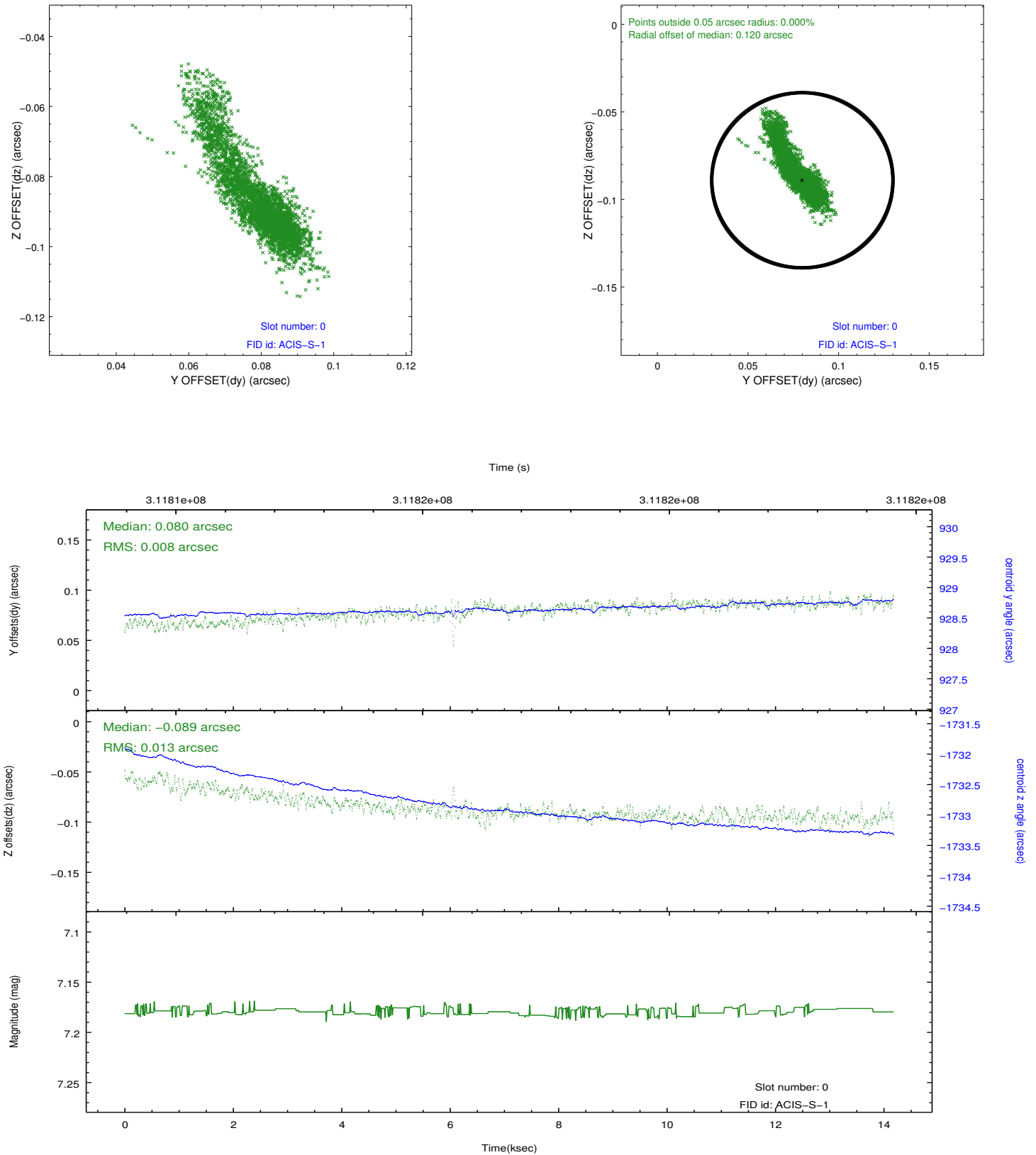


## 2.4.5 Slot 7

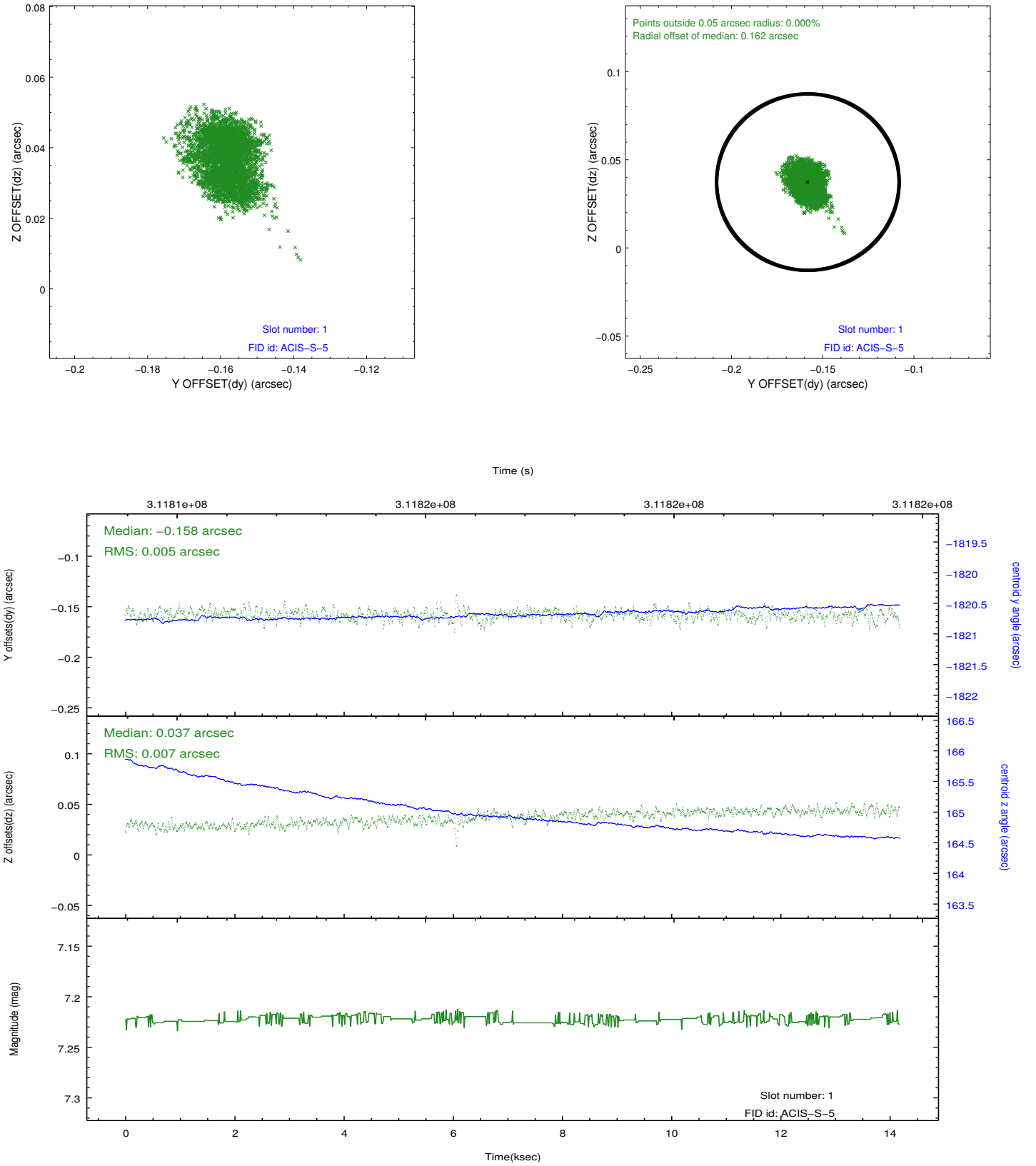


## 2.5 FID Slots

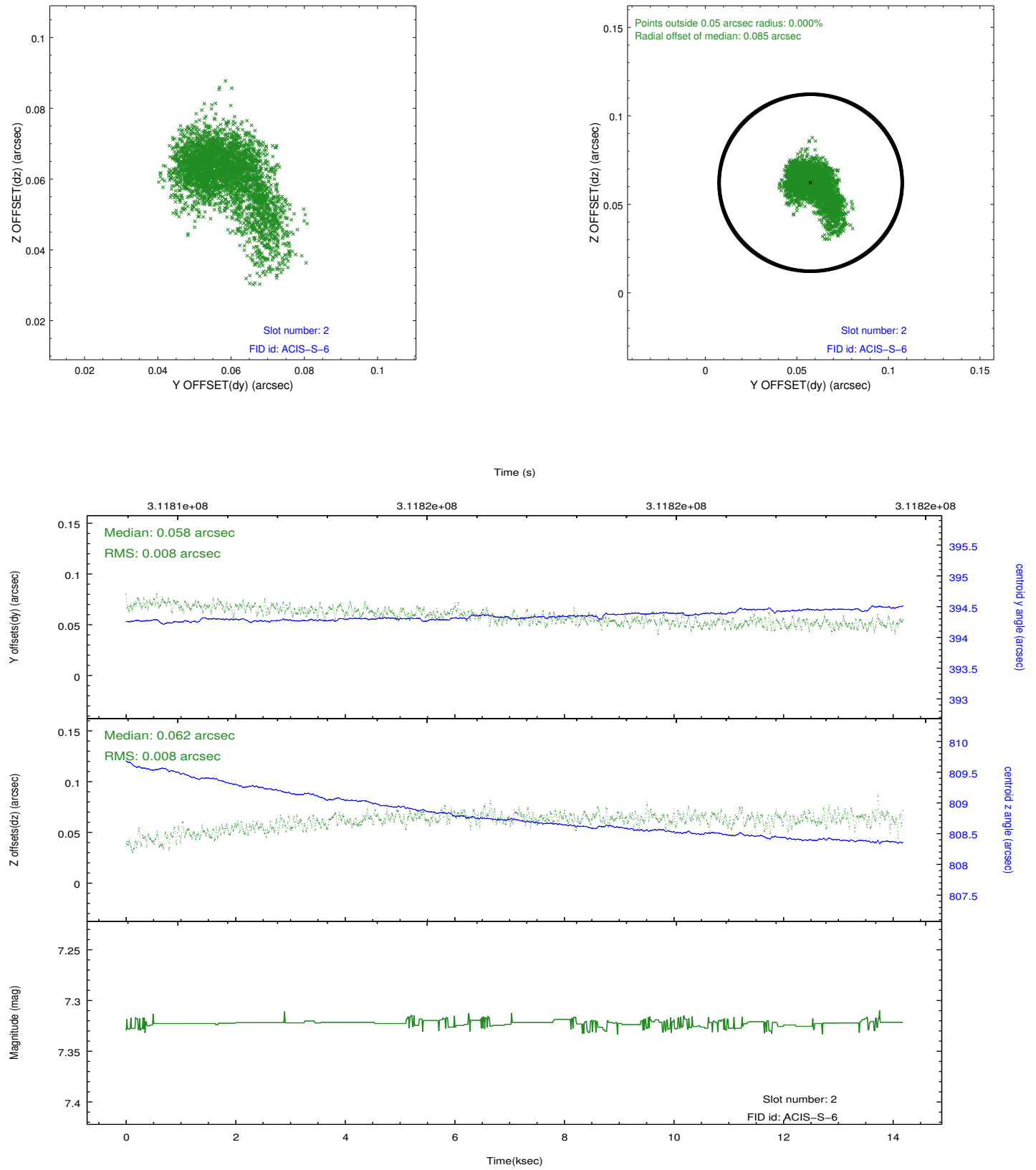
### 2.5.1 Slot 0



## 2.5.2 Slot 1



### 2.5.3 Slot 2



## A Summary

### A.1 Status

V&V Scientist	Jen Lauer
V&V Date (YYYY-MM-DD)	2012.05.07
V&V Edition	1
V&V Disposition and Status	OK
V&V Charge Time	14.0523001

### A.2 Comments