

V&V Reference Report

L2 ASCDS Version : 8.4.4

Observation 7706 - L2 Version 2
Chandra X-Ray Center

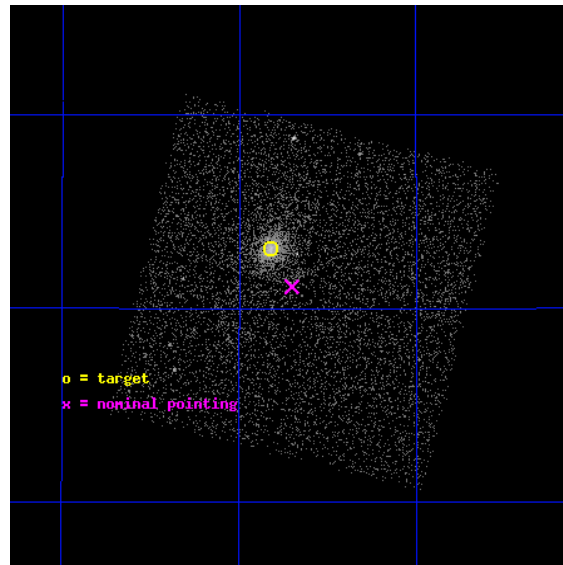
L2 Processing Date : Apr 26 2012

Contents

1	Front	2
2	OBI	3
2.1	OBI	3
2.1.1	Images	3
2.1.2	Bias	3
2.1.3	Parameters	4
2.1.4	Events	4
2.2	Compared Parameters	5
2.3	Aspect	6
2.4	Star Slots	9
2.4.1	Slot 3	9
2.4.2	Slot 4	10
2.4.3	Slot 5	11
2.4.4	Slot 6	12
2.4.5	Slot 7	13
2.5	FID Slots	14
2.5.1	Slot 0	14
2.5.2	Slot 1	15
2.5.3	Slot 2	16
A	Summary	17
A.1	Status	17
A.2	Comments	17

1 Front

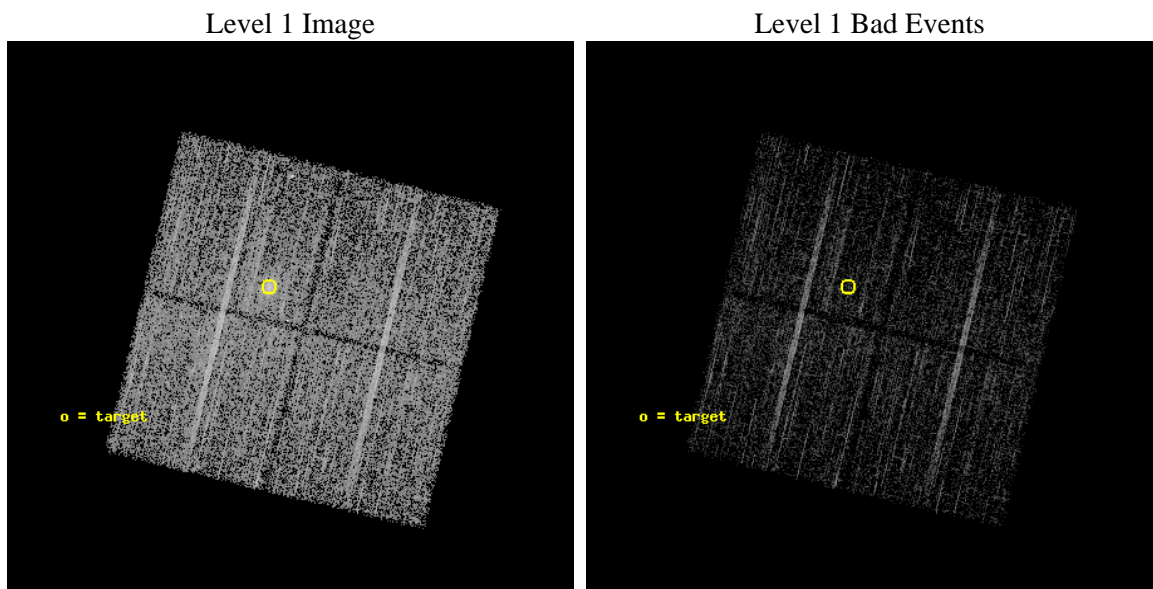
seq_num	701374	Sequence number
obs_id	7706	Observation id
title	Snapshot Survey for X-ray Outbursts in Rich Clusters of Galaxies	P
observer	Professor Gordon Garmire	Principal investigator
object	ZWICKY2701	Source name
dtcycle	0	
cycle	P	events from which exps? Prim/Second/Both
ra_targ	148.205	Observer's specified target RA [deg]
dec_targ	51.885	Observer's specified target Dec [deg]
ra_nom	148.17578978843	Nominal RA [deg]
dec_nom	51.852239323923	Nominal Dec [deg]
roll_nom	283.58953559142	Nominal Roll [deg]
revision	2	Processing version of data
ontime	5180.1000398397	Sum of GTIs [s]
livetime	5112.4182192851	Livetime [s]
ontime0	5180.1000398397	Sum of GTIs [s]
ontime1	5180.1000398397	Sum of GTIs [s]
ontime2	5176.9590795636	Sum of GTIs [s]
ontime3	5180.1000398397	Sum of GTIs [s]
l2events	12281	Number of level 2 events



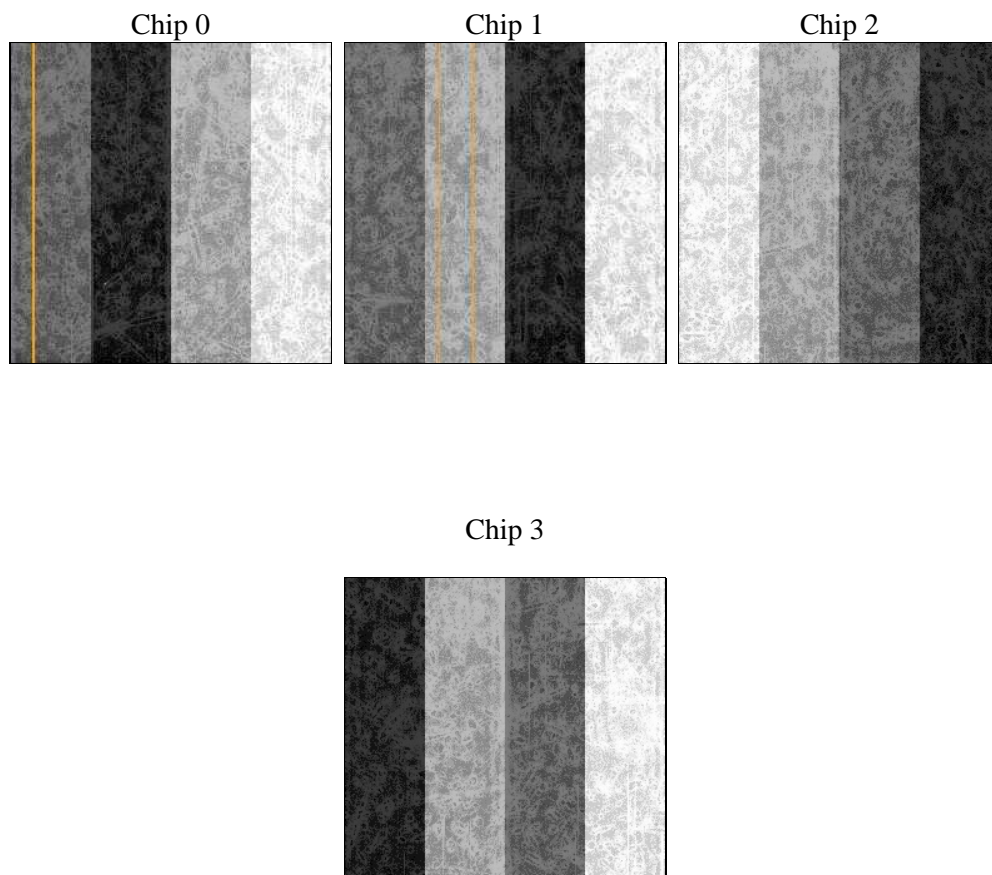
2 OBI

2.1 OBI

2.1.1 Images



2.1.2 Bias



2.1.3 Parameters

obi_num	0	Obi number	sched_exp_time	5000.000000	[s] Scheduled observation exposure time
ascdsver	8.4.4	Processing system revision	ontime	5180.1000398397	Sum of GTIs [s]
caldsver	4.4.9	 	ontime0	5180.1000398397	Sum of GTIs [s]
date	2012-04-27T01:48:28	Date and time of file creation	ontime1	5180.1000398397	Sum of GTIs [s]
revision	2	Processing version of data	ontime2	5176.9590795636	Sum of GTIs [s]
			ontime3	5180.1000398397	Sum of GTIs [s]
			l1events	144260	Number of level 1 events

2.1.4 Events

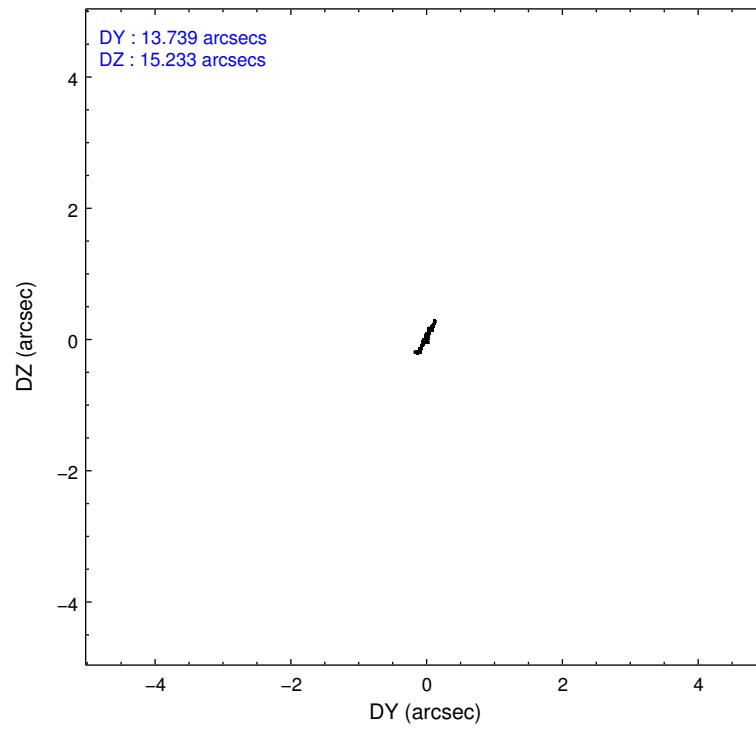
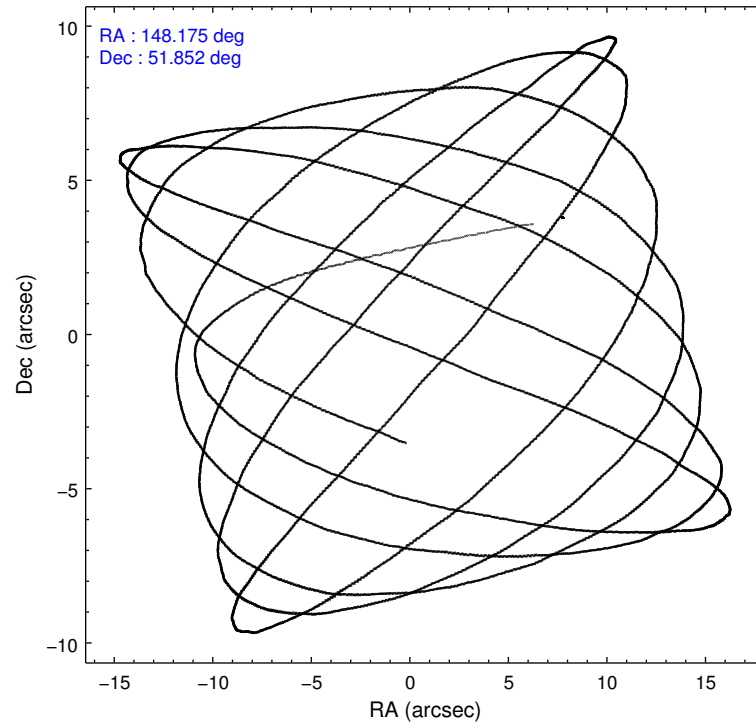
	ccd 0	ccd 1	ccd 2	ccd 3
level 1 events	34455	32034	40513	37258
rejected events	31488	28890	37264	31669
rejected %	91%	90%	91%	84%

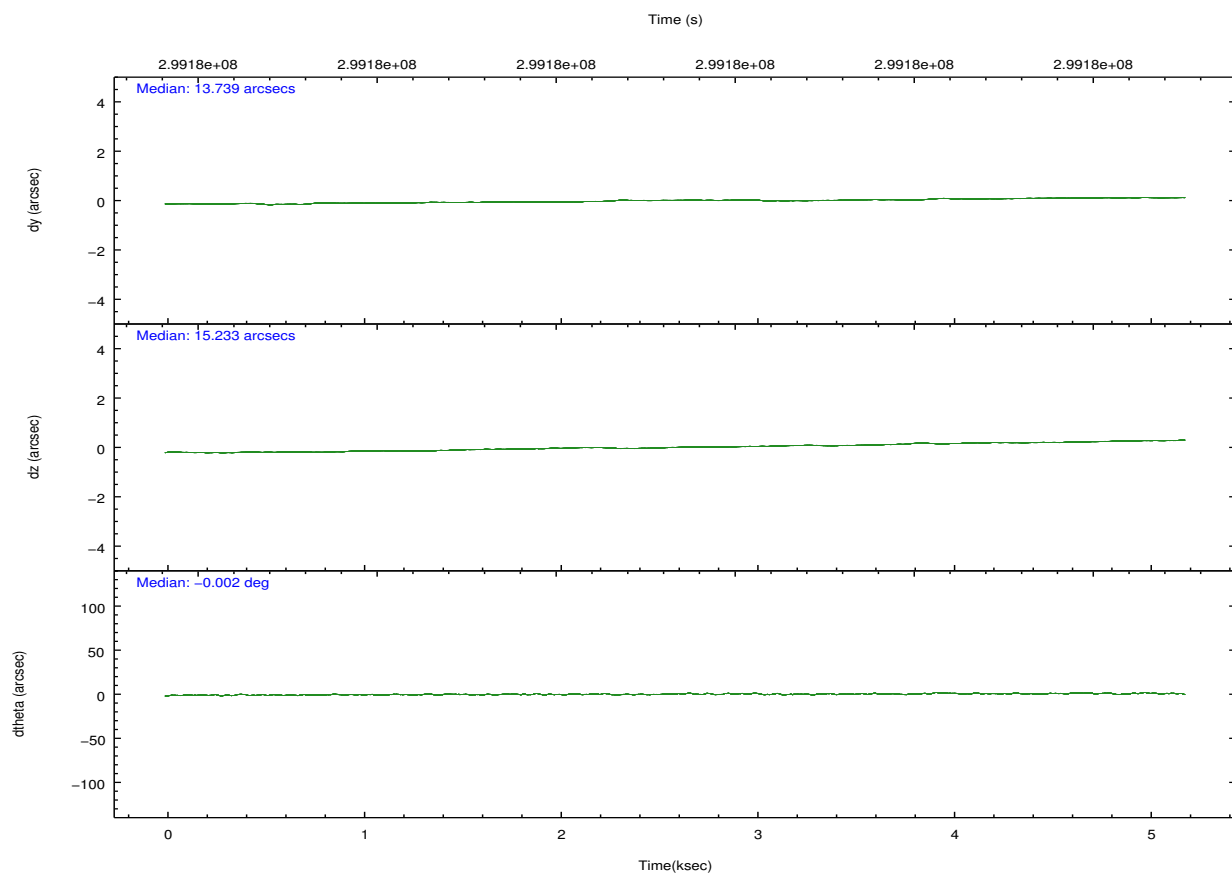
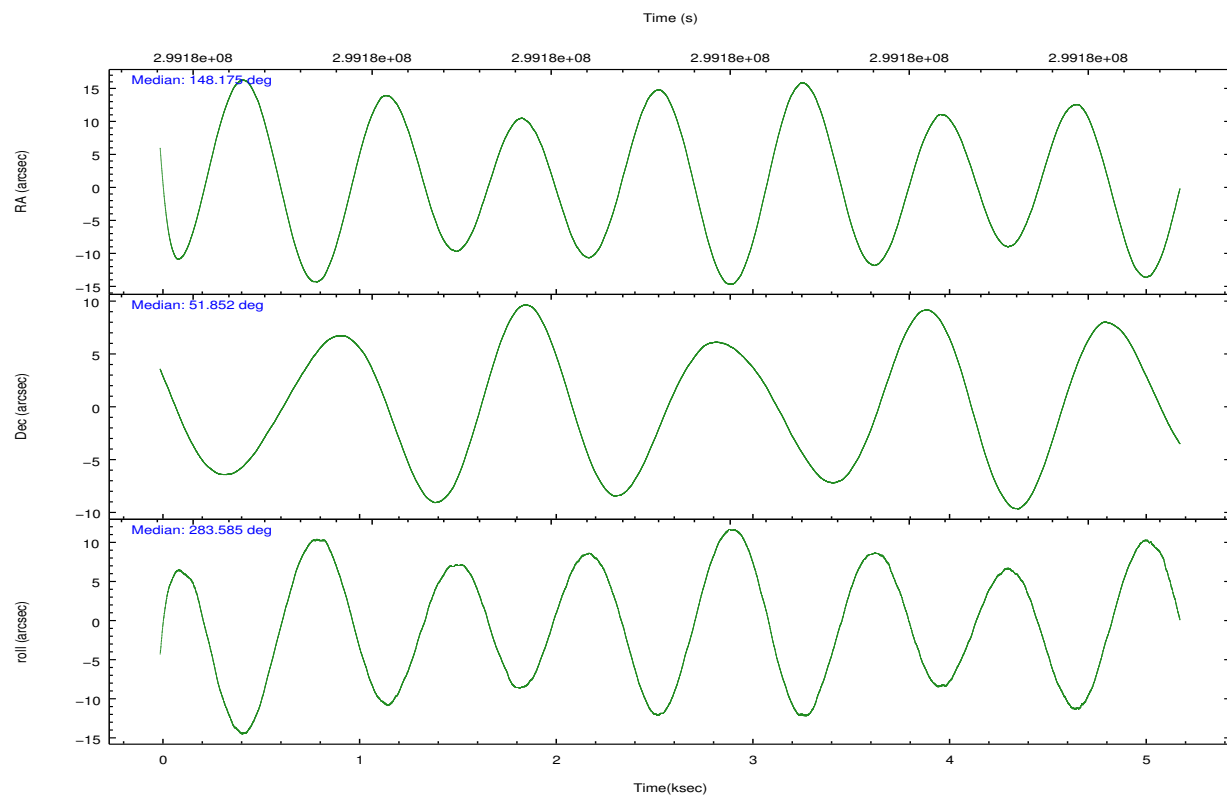
	ccd 0	ccd 1	ccd 2	ccd 3
grade 0 events	1144	1170	1391	3477
	3%	3%	3%	9%
grade 1 events	26	19	27	42
	0%	0%	0%	0%
grade 2 events	755	678	740	884
	2%	2%	1%	2%
grade 3 events	316	392	319	381
	0%	1%	0%	1%
grade 4 events	333	360	354	381
	0%	1%	0%	1%
grade 5 events	605	680	529	691
	1%	2%	1%	1%
grade 6 events	426	567	465	491
	1%	1%	1%	1%
grade 7 events	30850	28168	36688	30911
	89%	87%	90%	82%

2.2 Compared Parameters

Parameter	Planned	Actual	Parameter	Planned	Actual
Instrument	ACIS	ACIS	Obspar format version number	7	7
Detector	ACIS-0123	ACIS-0123	Obspar file type	PREDICTED	ACTUAL
Grating	NONE	NONE	Obspar update status	NONE	UPDATED
Data mode	VFAINT	VFAINT	Number of optional ACIS chips dropped	0	0
Observation mode	POINTING	POINTING	On-chip summing requested	N	N
[deg] Pointing RA	148.145046	148.1757897884255	Subarray requested	NONE	NONE
[deg] Pointing Dec	51.872079	51.85223932392316	Alternating exposures requested	N	N
[deg] Pointing Roll	283.405041	283.5895355914218	[s] Primary exposure time	0.000000	3.1
[mm] SIM focus pos	-0.782348	-0.7809083437167272			
[mm] SIM defocus	0	0.001439871863259334			
[mm] SIM translation stage pos	-233.592463	-233.5874344608287			
[mm] SIM translation stage offset	0	-0.005018542100998502			
[s] Observation start time (MET)	299175244.184000	299174300.55277			
Observation start date	2007-06-25T16:12:59	2007-06-25T15:58:20			
[s] Observation end time (MET)	299180244.184000	299181245.4406			
Observation end date	2007-06-25T17:36:19	2007-06-25T17:54:05			
Read mode	TIMED	TIMED			

2.3 Aspect



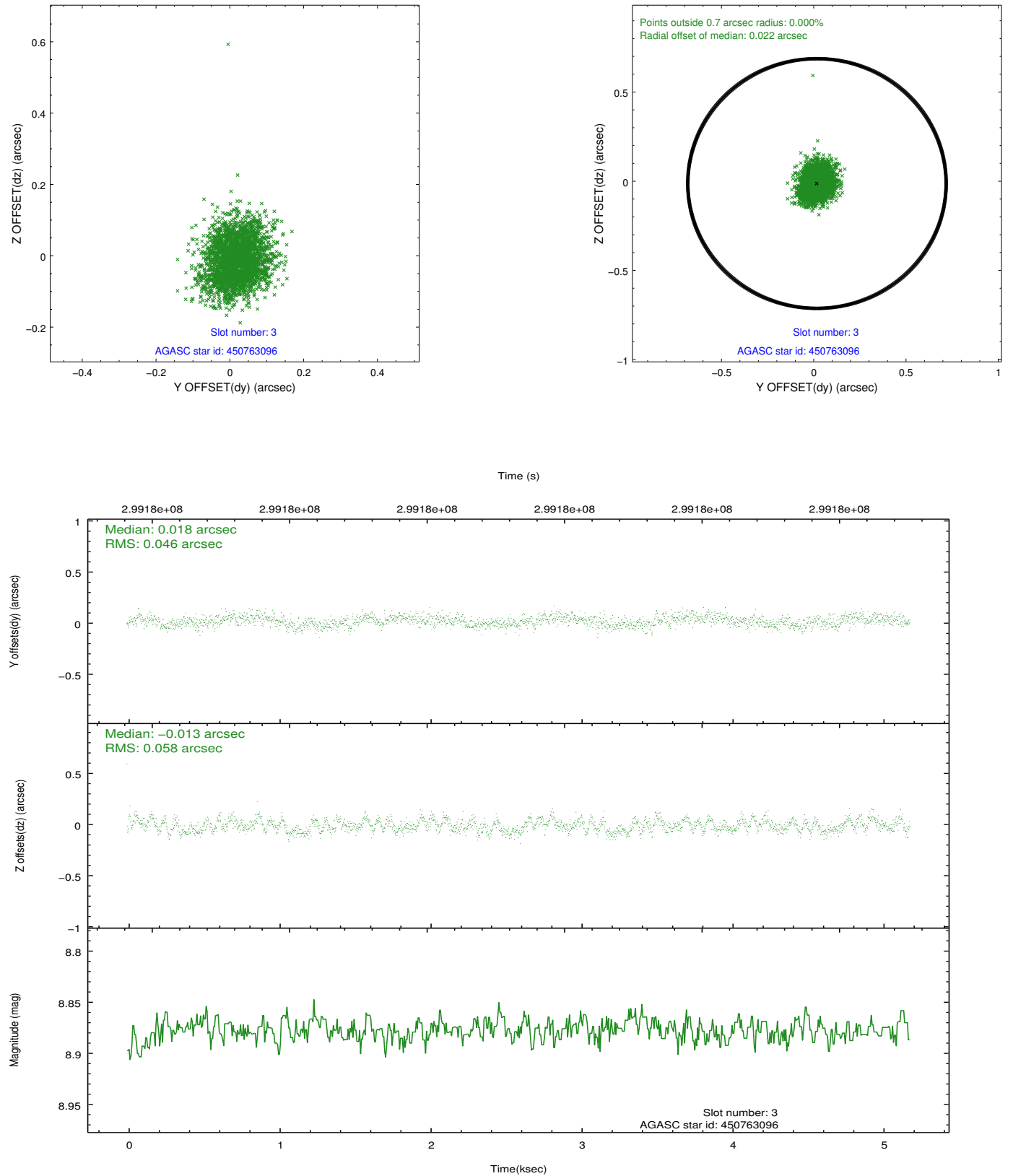


Slot Statistics

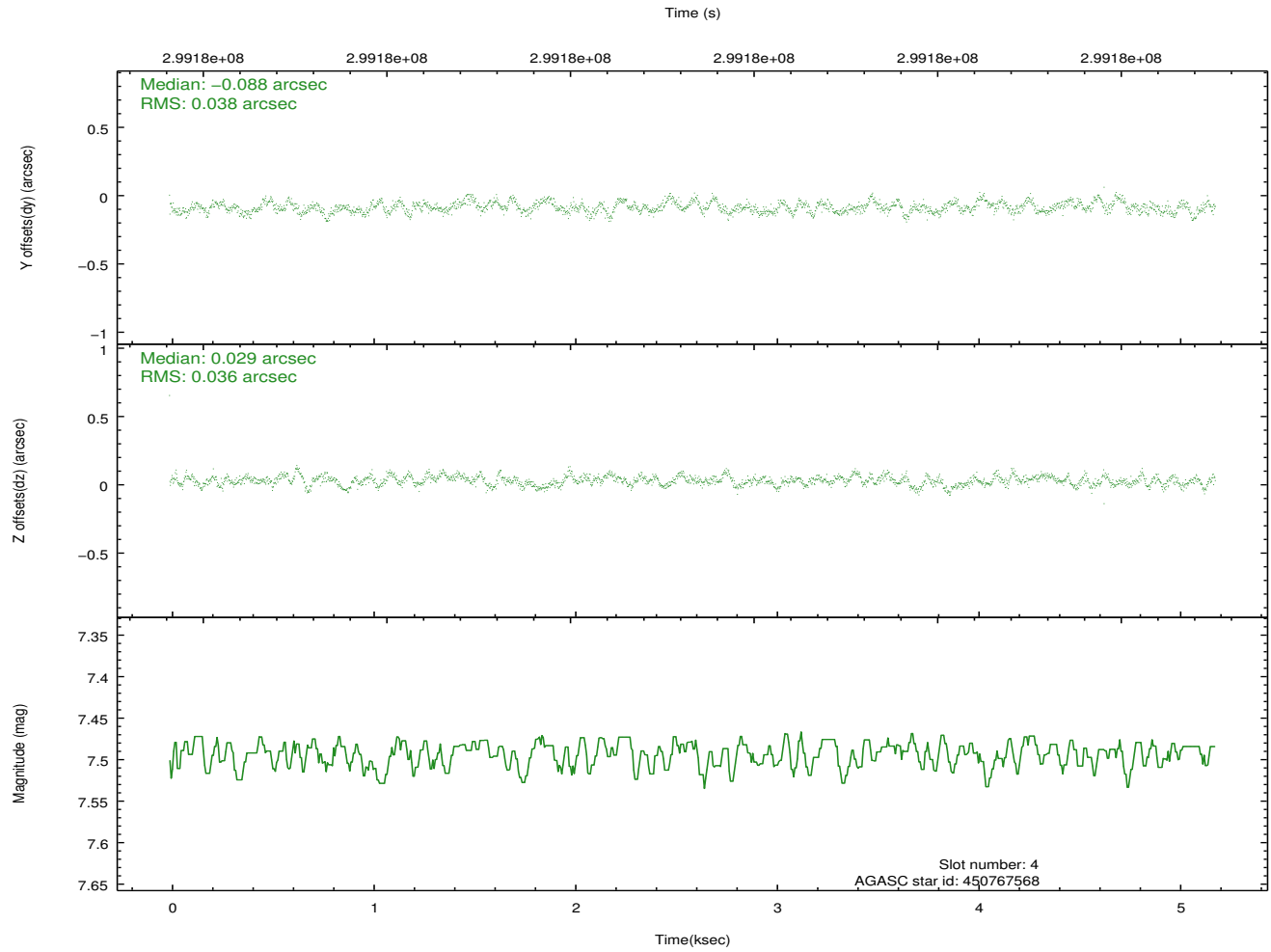
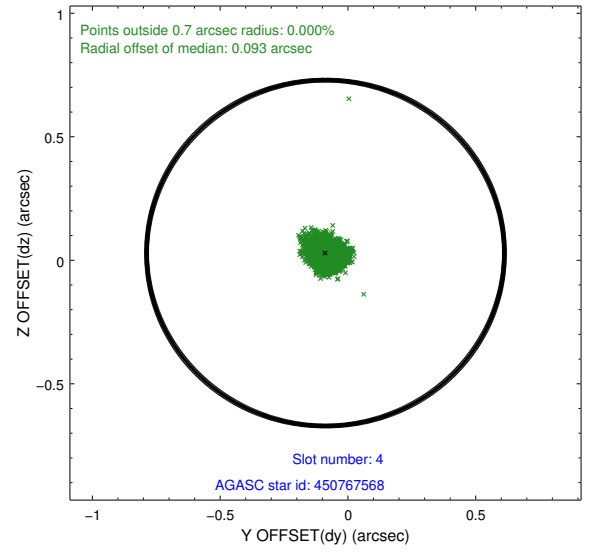
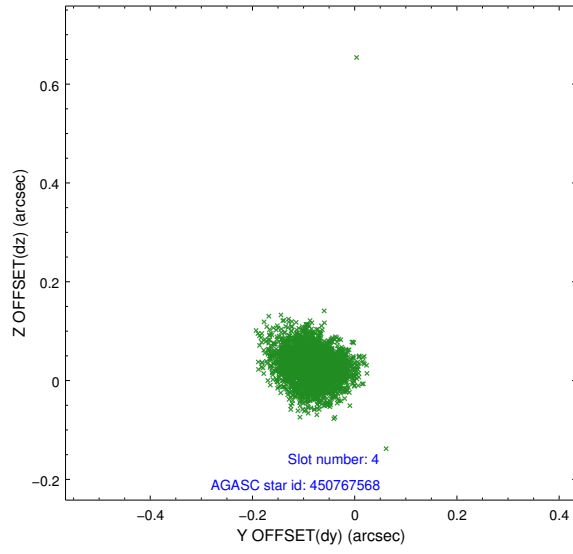
slot	status	id	mag	n_pts	med_dy	med_dz	dr1	dr2	ra	dec	mean_y	mean_z
0	FID	ACIS-I-1	7.22	1264	0.039	-0.026	0.011	0.019	0.000000	0.000000	925.80	-838.88
1	FID	ACIS-I-5	7.22	1266	-0.216	0.039	0.007	0.012	0.000000	0.000000	-1821.90	1058.11
2	FID	ACIS-I-6	7.23	1265	0.085	0.058	0.009	0.014	0.000000	0.000000	390.14	1703.93
3	GUIDE	450763096	8.88	2530	0.018	-0.013	0.077	0.124	147.744877	52.019238	-722.05	-740.03
4	GUIDE	450767568	7.49	2531	-0.088	0.029	0.055	0.087	147.522964	51.410908	1285.59	-1741.94
5	GUIDE	450767880	8.95	2531	0.036	-0.007	0.080	0.133	147.814929	51.144933	2373.01	-1331.72
6	GUIDE	450765792	9.19	2531	0.116	-0.003	0.077	0.124	148.420268	51.988432	-265.73	690.95
7	GUIDE	499921472	8.62	2528	-0.083	-0.007	0.067	0.106	148.542794	52.591862	-2321.21	1448.19

2.4 Star Slots

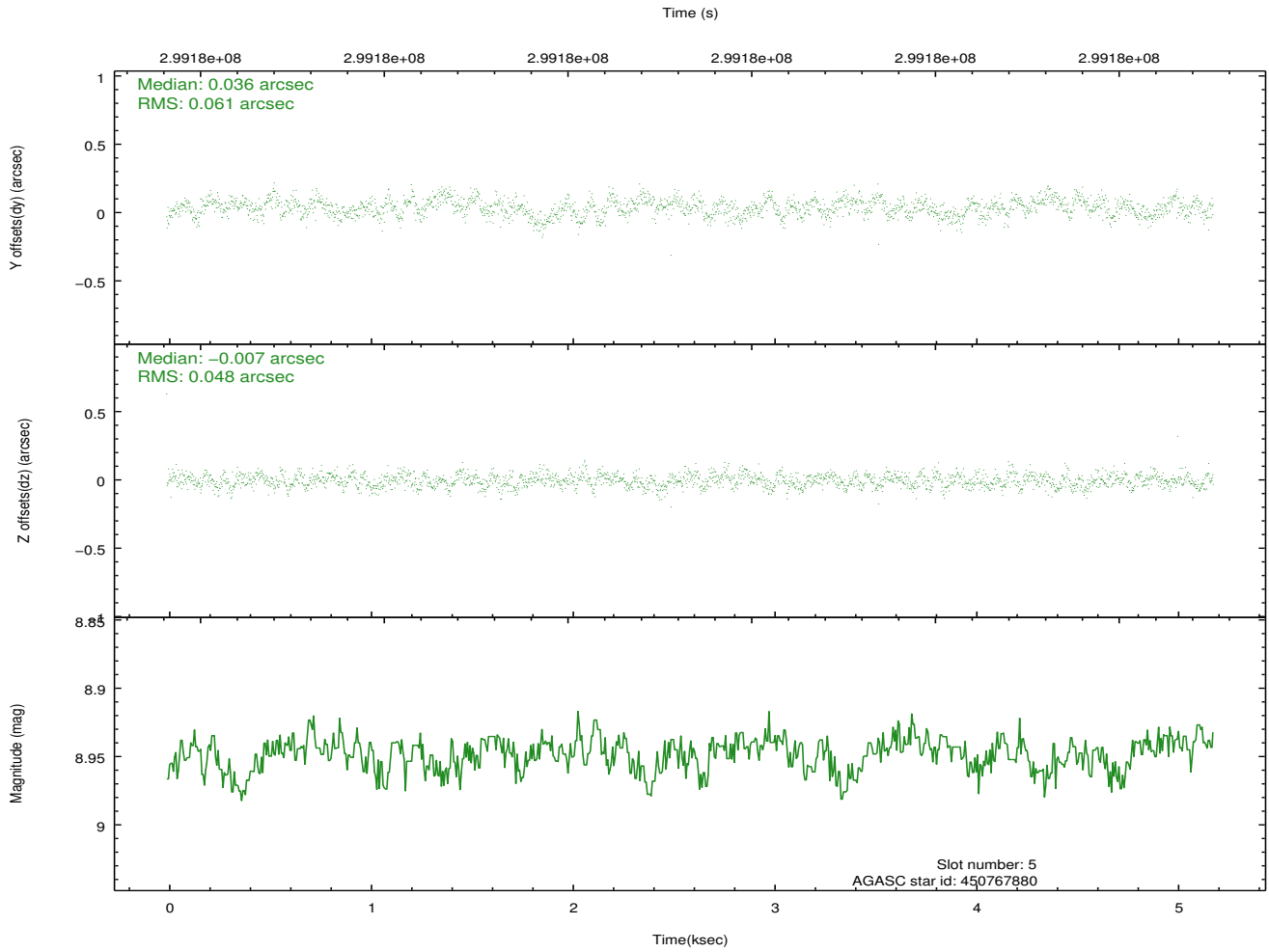
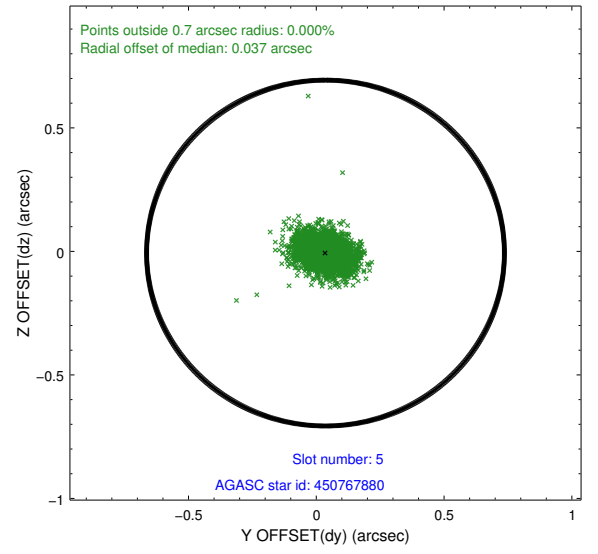
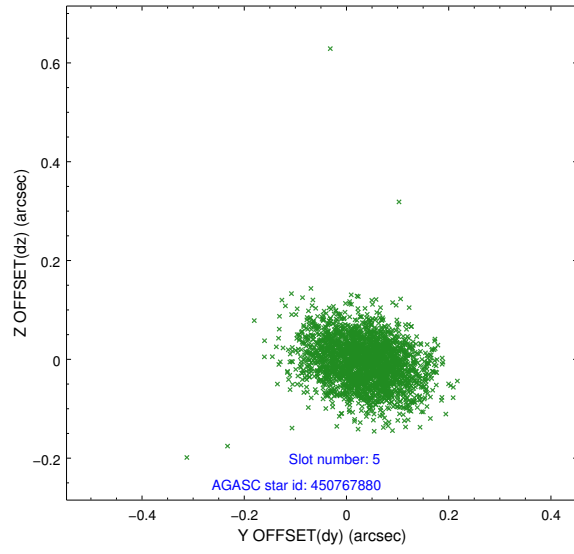
2.4.1 Slot 3



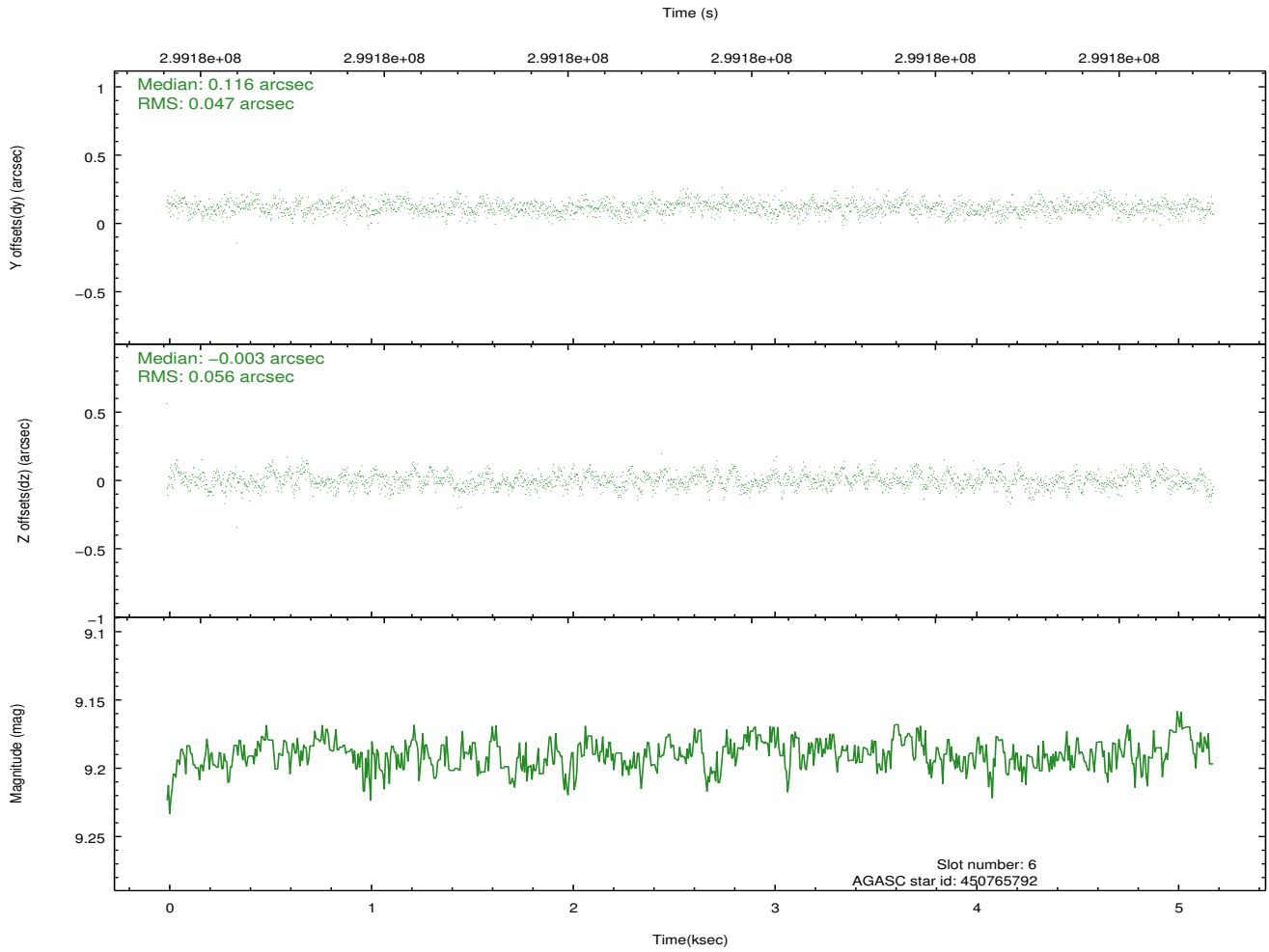
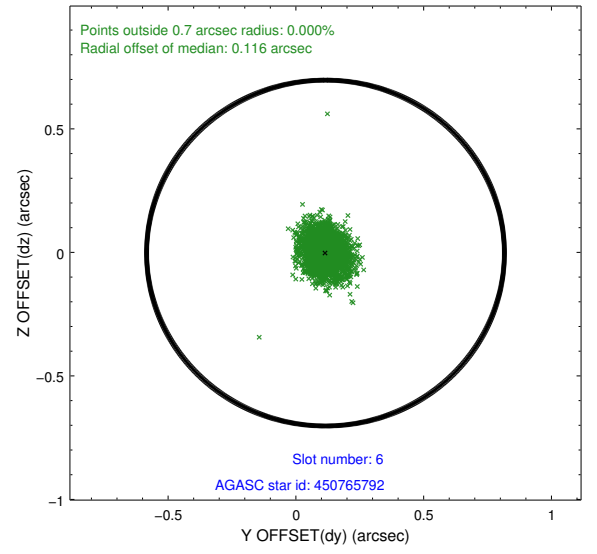
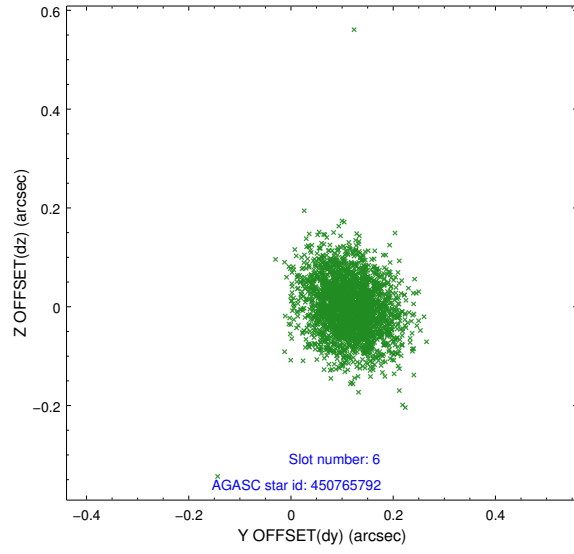
2.4.2 Slot 4



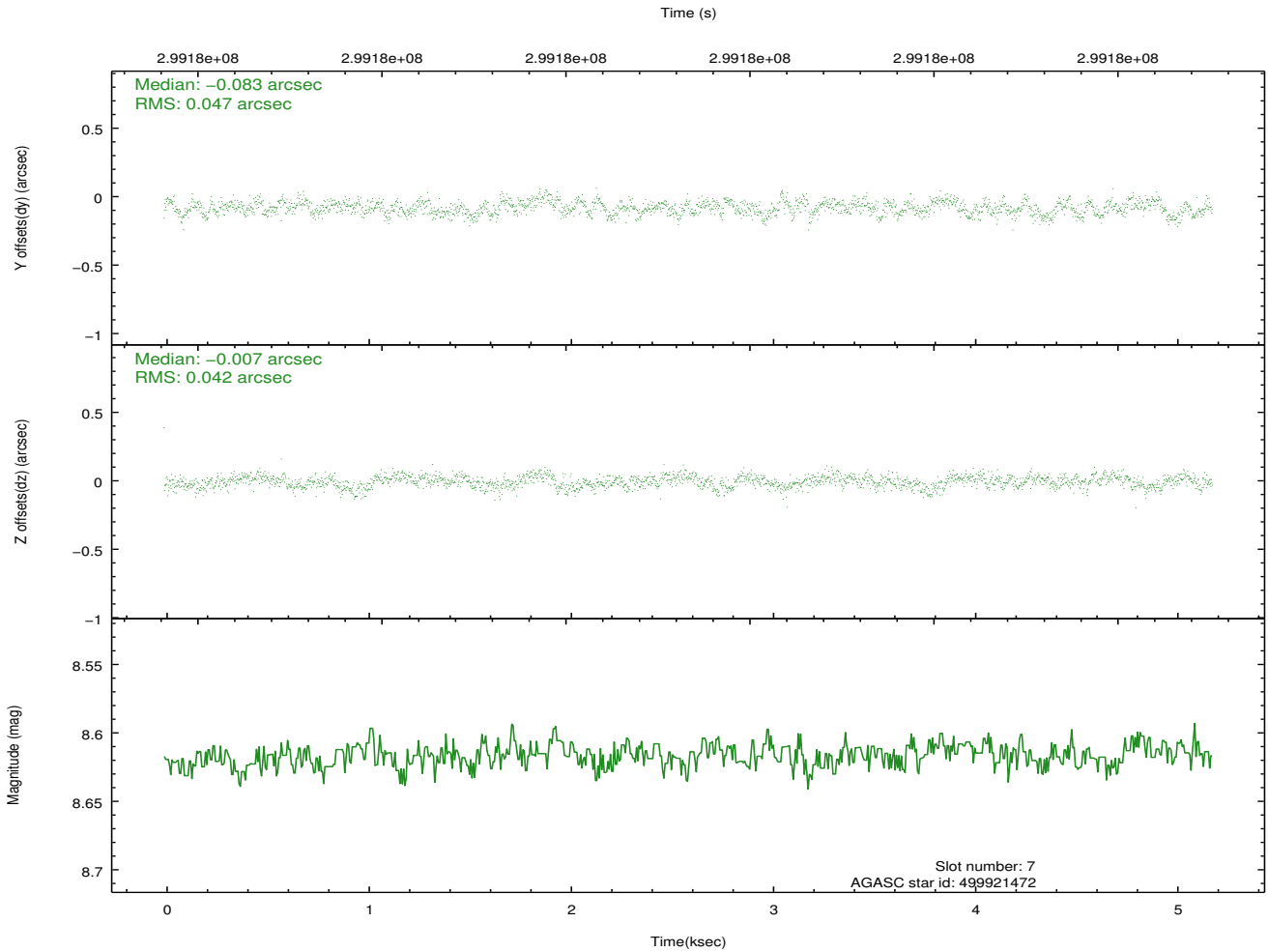
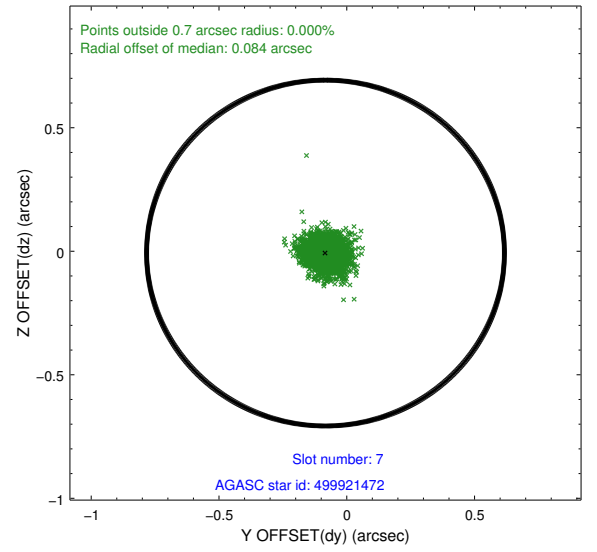
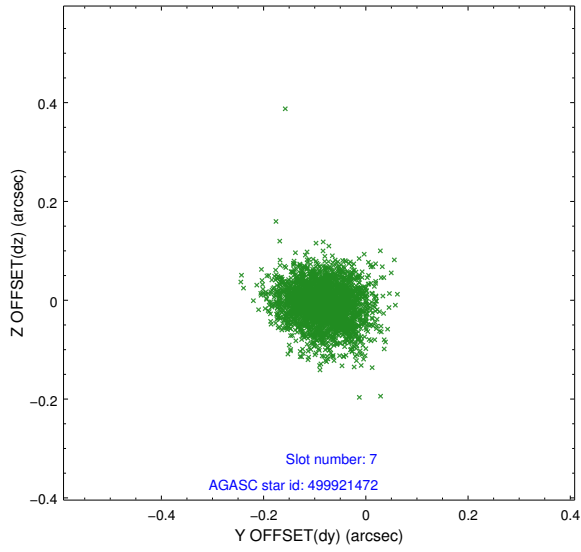
2.4.3 Slot 5



2.4.4 Slot 6

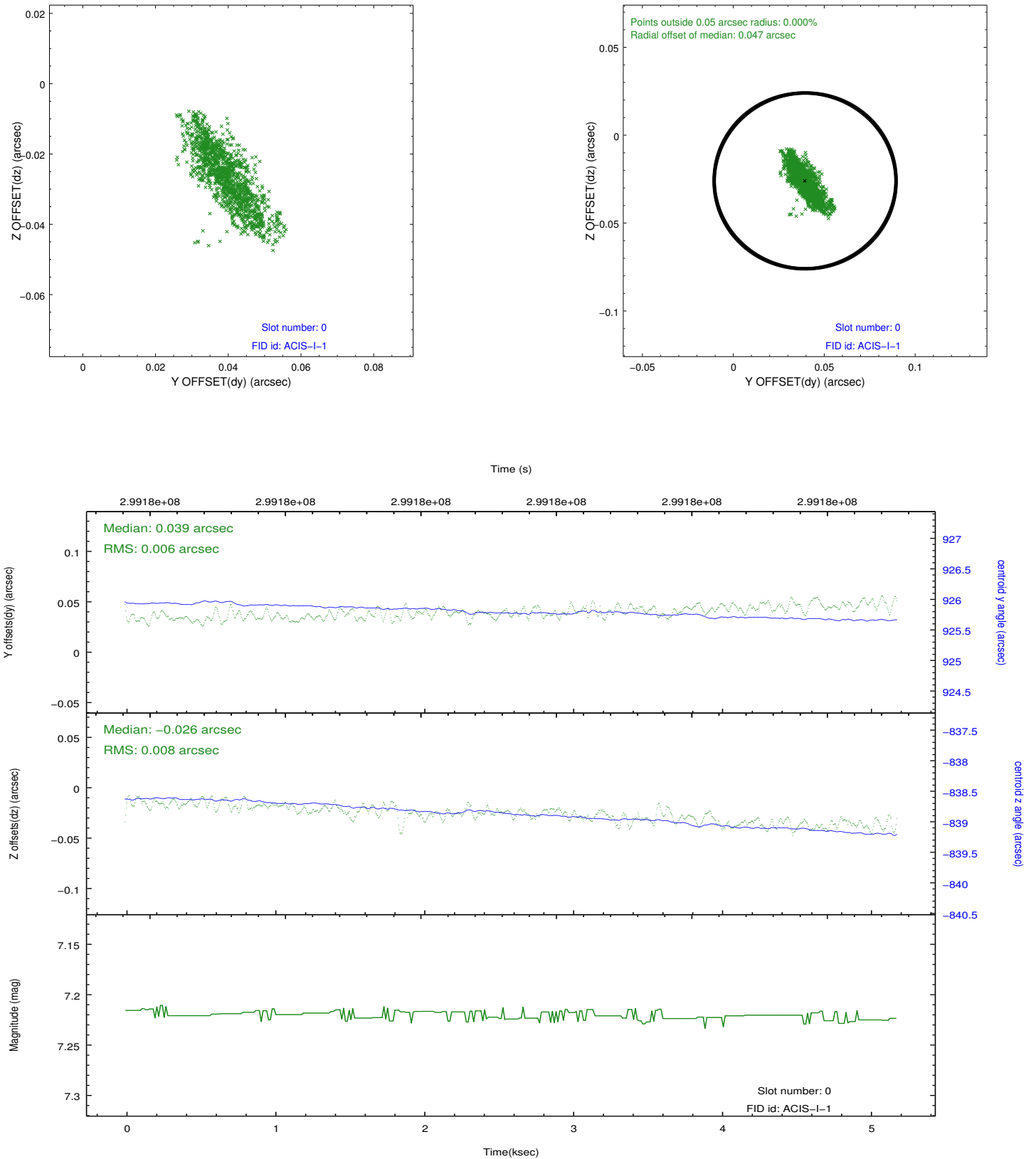


2.4.5 Slot 7

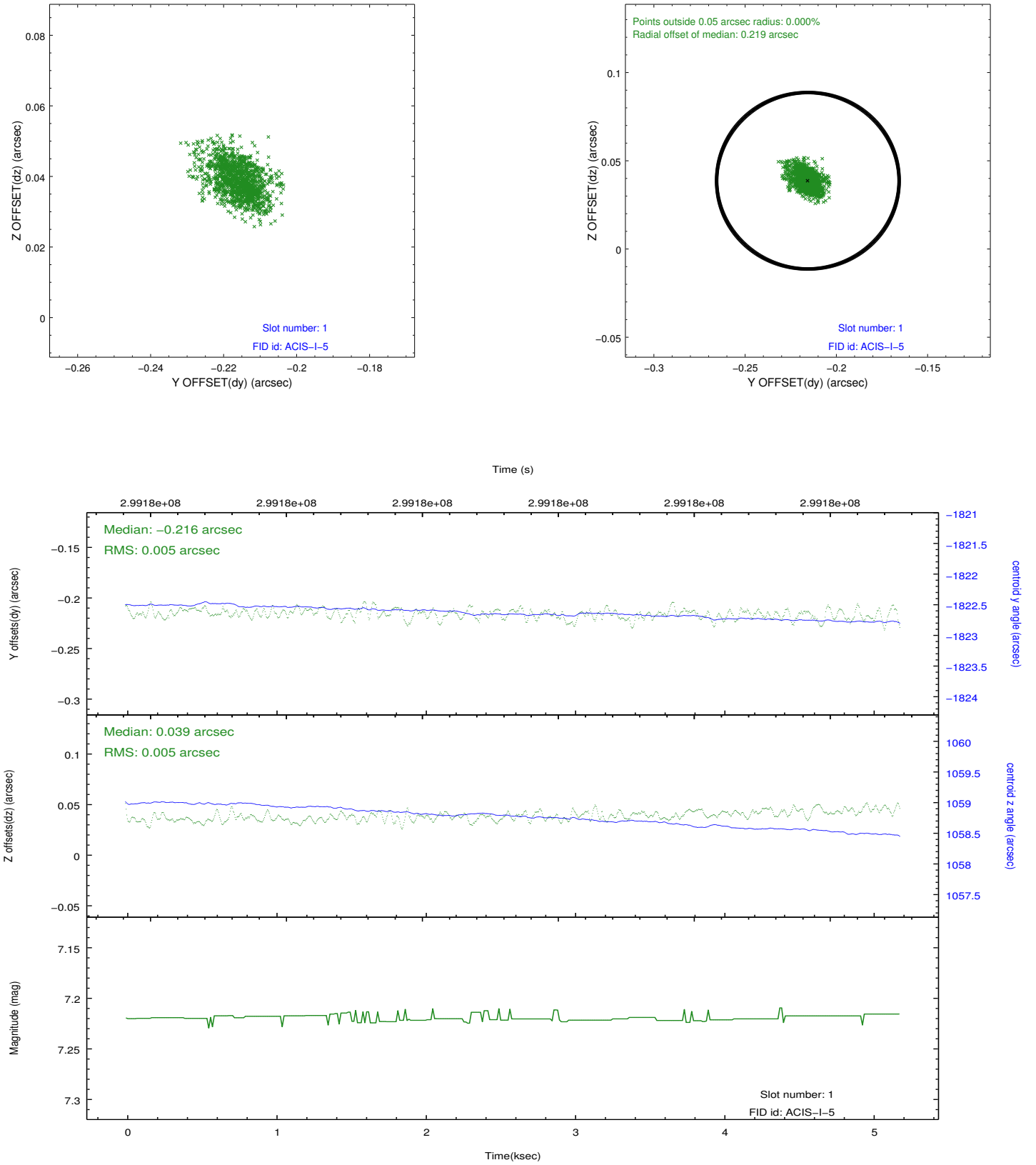


2.5 FID Slots

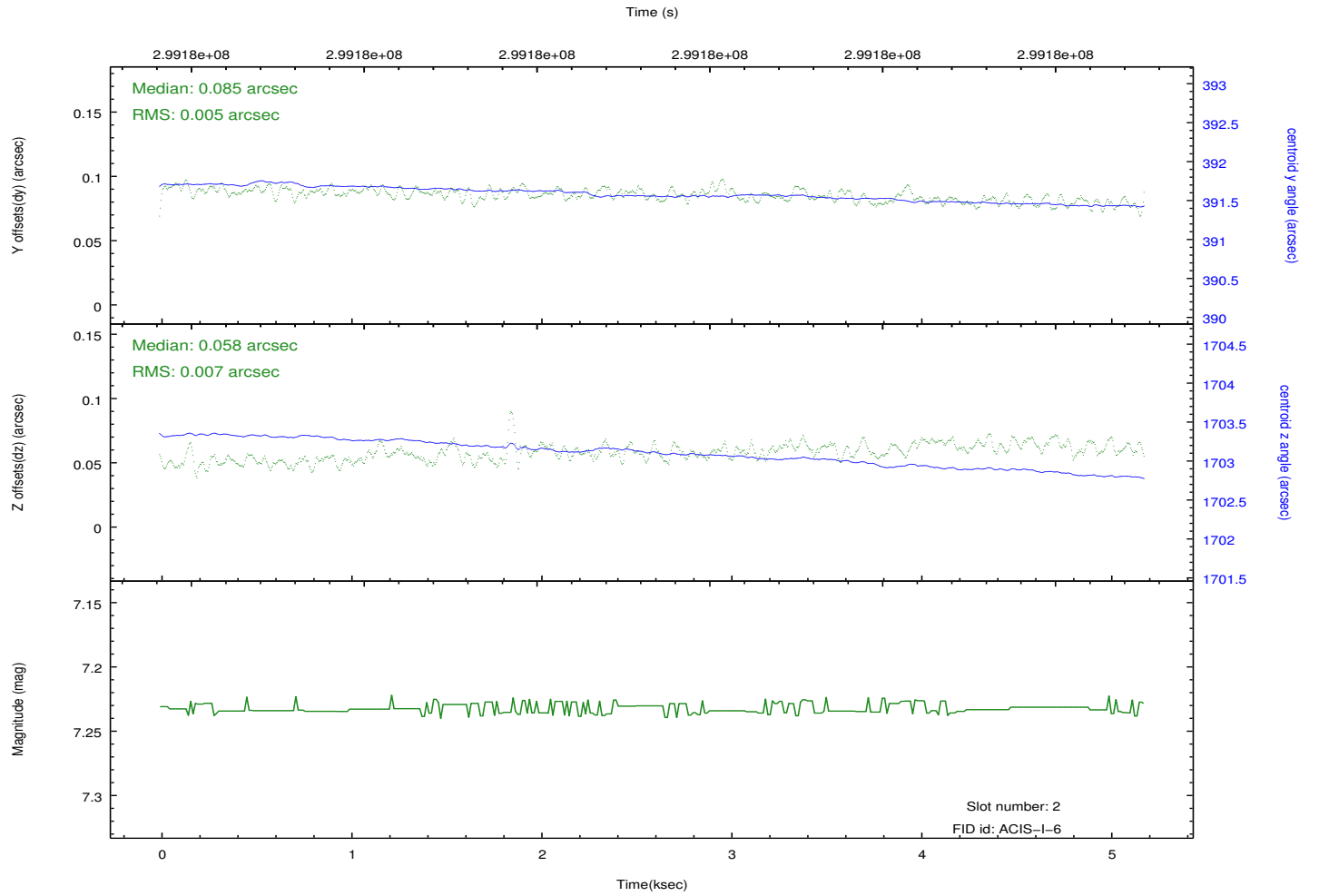
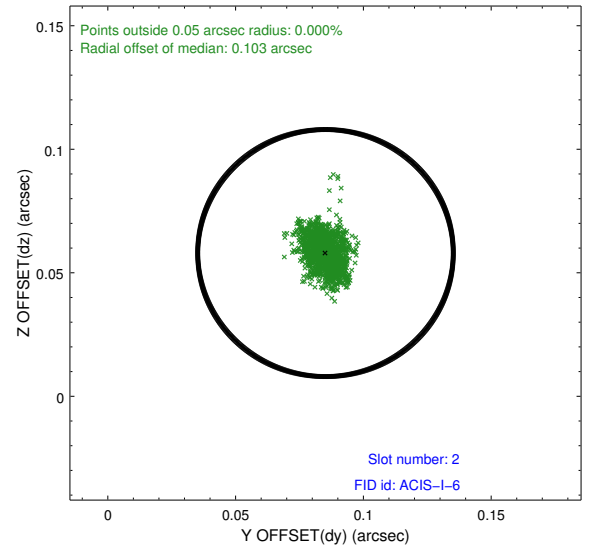
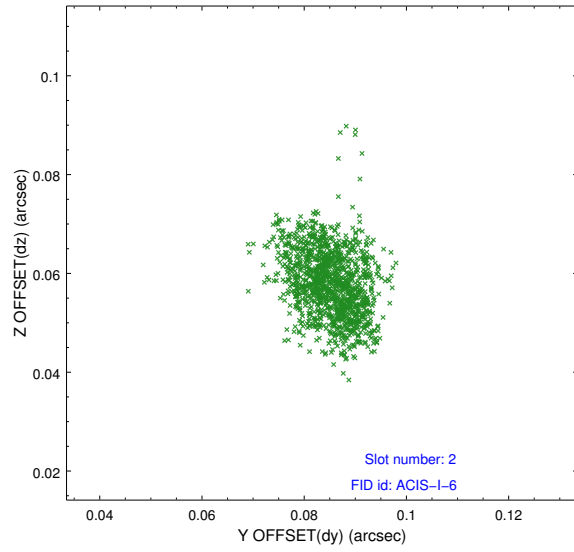
2.5.1 Slot 0



2.5.2 Slot 1



2.5.3 Slot 2



A Summary

A.1 Status

V&V Scientist	Jen Lauer
V&V Date (YYYY-MM-DD)	2012.04.27
V&V Edition	1
V&V Disposition and Status	OK
V&V Charge Time	5.18010003

A.2 Comments