

V&V Reference Report

L2 ASCDS Version : 8.4.4

Observation 7476 - L2 Version 3
Chandra X-Ray Center

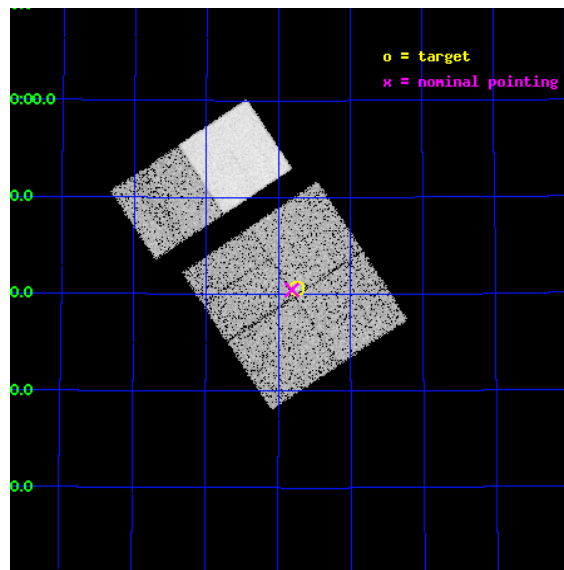
L2 Processing Date : Apr 20 2012

Contents

1	Front	2
2	OBI	3
2.1	OBI	3
2.1.1	Images	3
2.1.2	Bias	3
2.1.3	Parameters	4
2.1.4	Events	4
2.2	Compared Parameters	5
2.3	Aspect	6
2.4	Star Slots	9
2.4.1	Slot 3	9
2.4.2	Slot 4	10
2.4.3	Slot 5	11
2.4.4	Slot 6	12
2.4.5	Slot 7	13
2.5	FID Slots	14
2.5.1	Slot 0	14
2.5.2	Slot 1	15
2.5.3	Slot 2	16
A	Summary	17
A.1	Status	17
A.2	Comments	17

1 Front

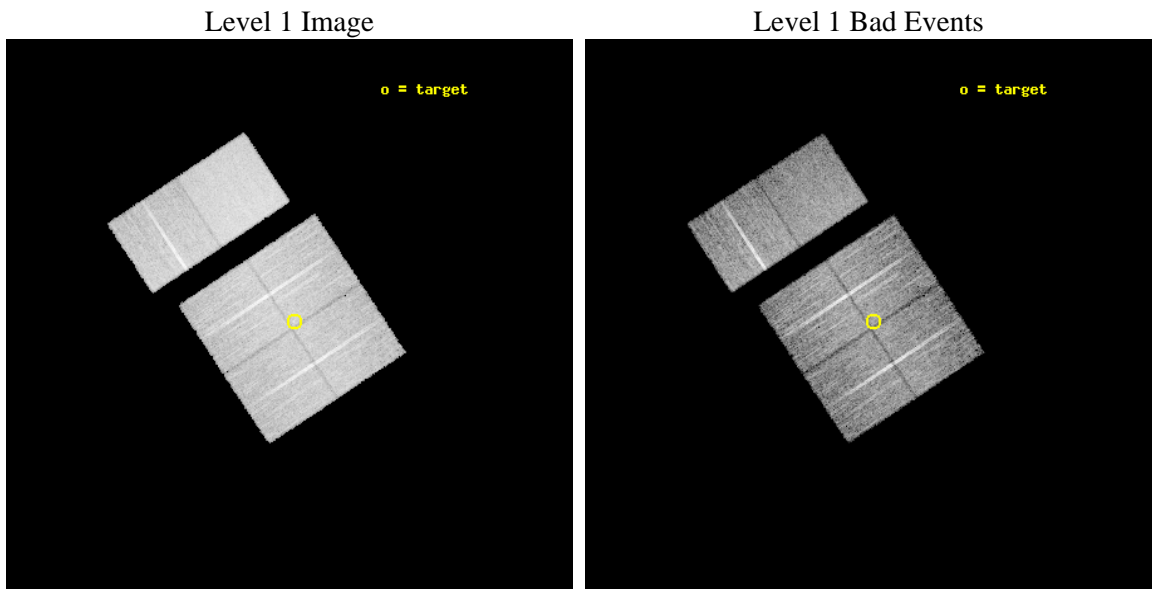
seq_num	400586	Sequence number
obs_id	7476	Observation id
title	A Pilot Study of X-ray Emission from Candidate Massive Star Clusters	
observer	Professor Gordon Garmire	Principal investigator
object	BDSB2003+50	Source name
dtcycle	0	
cycle	P	events from which exps? Prim/Second/Both
ra_targ	16.6875	Observer's specified target RA [deg]
dec_targ	59.676667	Observer's specified target Dec [deg]
ra_nom	16.702853314114	Nominal RA [deg]
dec_nom	59.674420715831	Nominal Dec [deg]
roll_nom	326.55014811454	Nominal Roll [deg]
revision	3	Processing version of data
ontime	9951.751421988	Sum of GTIs [s]
livetime	9825.7363532575	Livetime [s]
ontime0	9951.6283019781	Sum of GTIs [s]
ontime1	9951.6693419814	Sum of GTIs [s]
ontime2	9951.7103819847	Sum of GTIs [s]
ontime3	9951.751421988	Sum of GTIs [s]
ontime6	9951.8335019946	Sum of GTIs [s]
ontime7	9951.7924619913	Sum of GTIs [s]
l2events	99288	Number of level 2 events



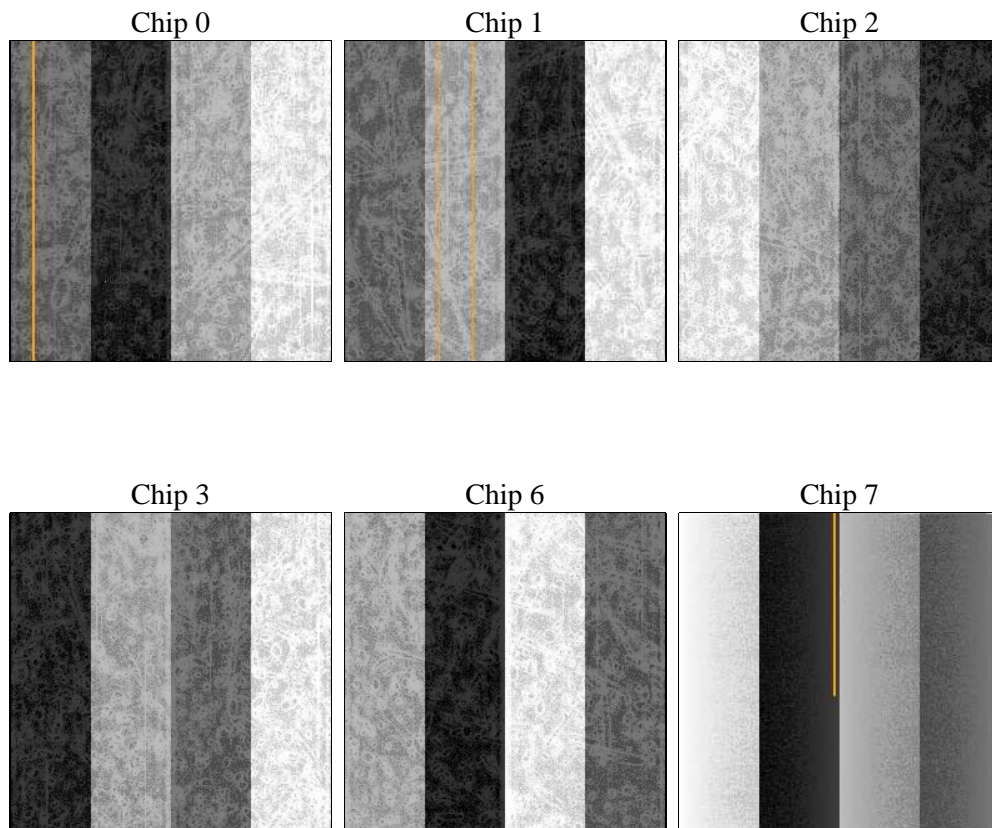
2 OBI

2.1 OBI

2.1.1 Images



2.1.2 Bias



2.1.3 Parameters

obi_num	0	Obi number	sched_exp_time	10000.000000	[s] Scheduled observation exposure time
ascdsver	8.4.4	Processing system revision	ontime	9951.751421988	Sum of GTIs [s]
caldsver	4.4.9	 	ontime0	9951.6283019781	Sum of GTIs [s]
date	2012-04-21T00:59:44	Date and time of file creation	ontime1	9951.6693419814	Sum of GTIs [s]
revision	3	Processing version of data	ontime2	9951.7103819847	Sum of GTIs [s]
			ontime3	9951.751421988	Sum of GTIs [s]
			ontime6	9951.8335019946	Sum of GTIs [s]
			ontime7	9951.7924619913	Sum of GTIs [s]
			l1events	572027	Number of level 1 events

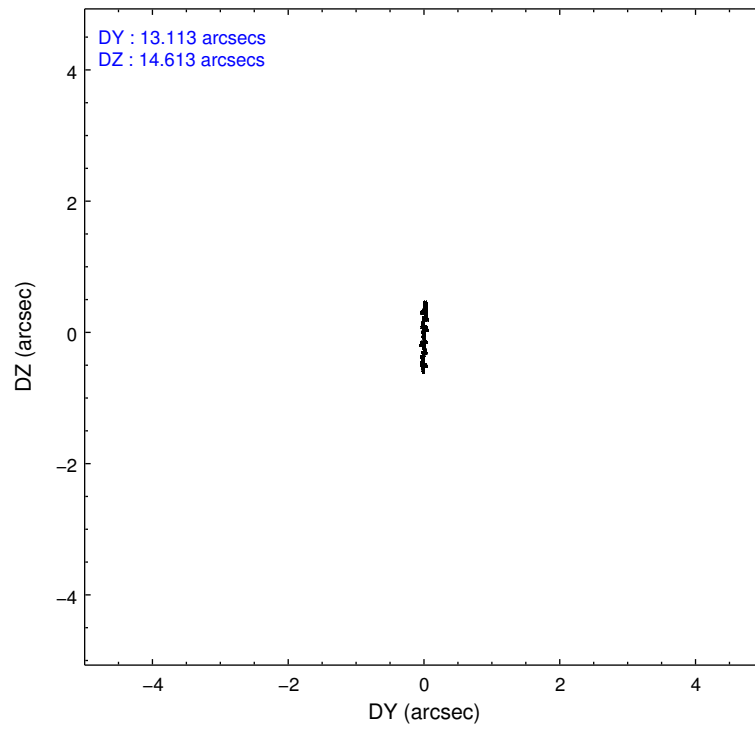
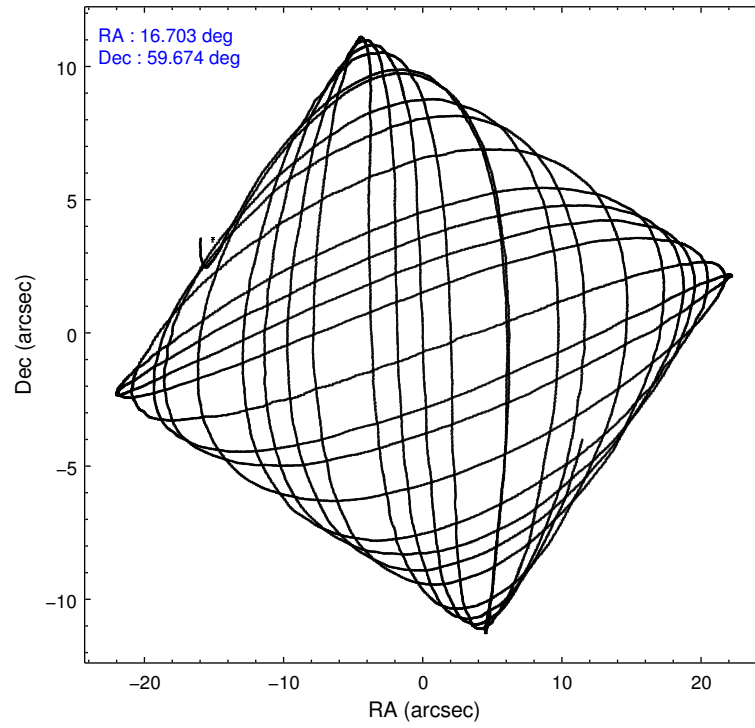
2.1.4 Events

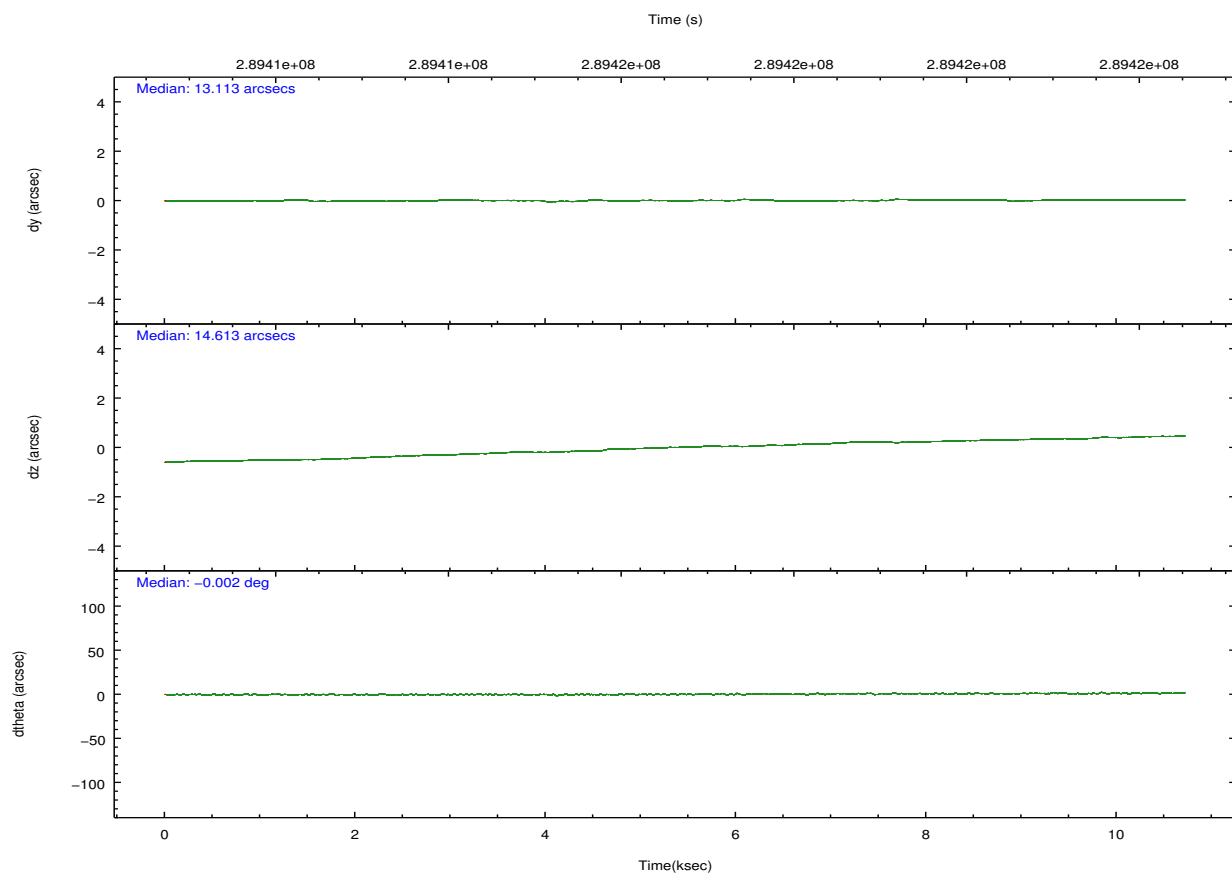
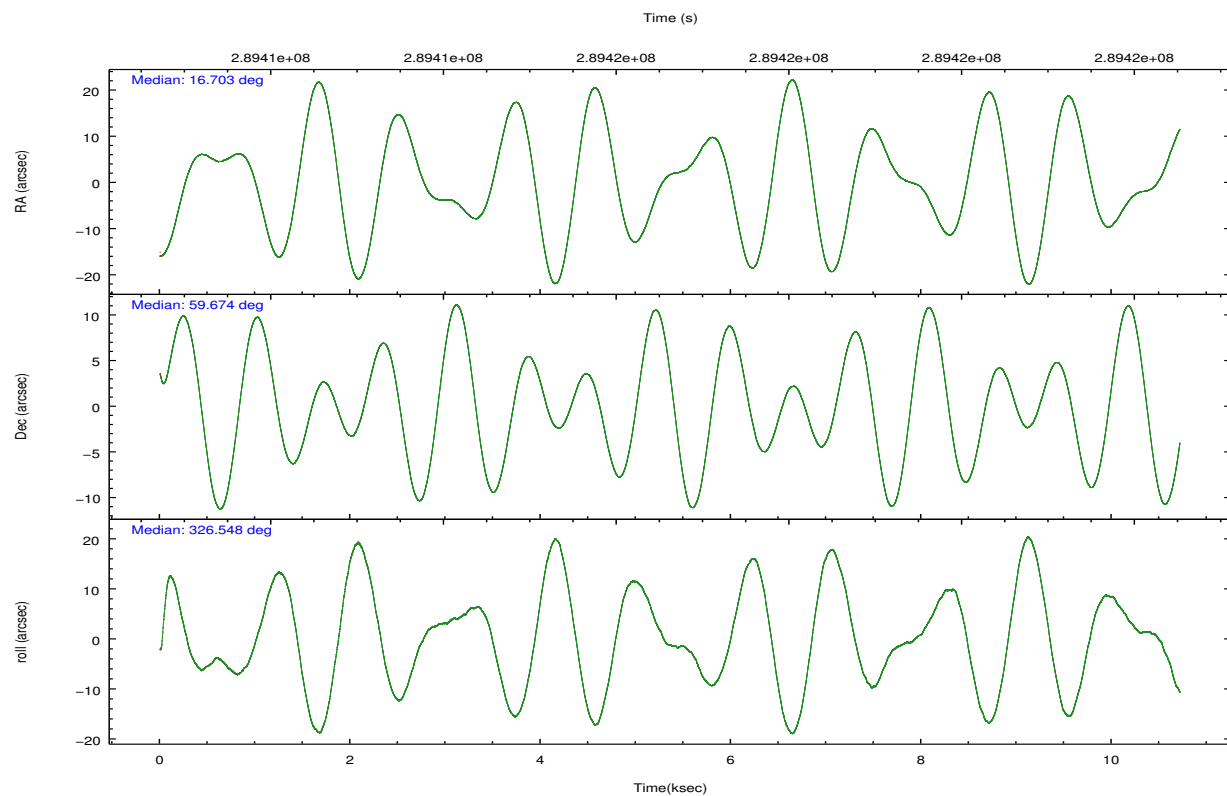
	ccd 0	ccd 1	ccd 2	ccd 3	ccd 6	ccd 7		ccd 0	ccd 1	ccd 2	ccd 3	ccd 6	ccd 7
level 1 events	83652	83340	93439	90858	94281	126457	grade 0 events	4740	4488	4772	4850	4328	4437
rejected events	72247	71770	82480	79724	83194	74313		5%	5%	5%	5%	4%	3%
rejected %	86%	86%	88%	87%	88%	58%	grade 1 events	55	51	64	68	54	134
								0%	0%	0%	0%	0%	0%
							grade 2 events	2484	2676	2295	2216	2414	10558
								2%	3%	2%	2%	2%	8%
							grade 3 events	1086	1058	1082	1098	1067	4518
								1%	1%	1%	1%	1%	3%
							grade 4 events	1066	1034	952	1019	997	4709
								1%	1%	1%	1%	1%	3%
							grade 5 events	3755	3928	3687	4283	4448	11955
								4%	4%	3%	4%	4%	9%
							grade 6 events	2029	2325	1864	1955	2283	27941
								2%	2%	1%	2%	2%	22%
							grade 7 events	68437	67780	78723	75369	78690	62205
								81%	81%	84%	82%	83%	49%

2.2 Compared Parameters

Parameter	Planned	Actual	Parameter	Planned	Actual
Instrument	ACIS	ACIS	Obspar format version number	7	7
Detector	ACIS-012367	ACIS-012367	Obspar file type	PREDICTED	ACTUAL
Grating	NONE	NONE	Obspar update status	NONE	UPDATED
Data mode	FAINT	FAINT	CCD I0 on	Y	Y
Observation mode	POINTING	POINTING	CCD I1 on	Y	Y
[deg] Pointing RA	16.648511	16.70285331411355	CCD I2 on	Y	Y
[deg] Pointing Dec	59.675954	59.67442071583075	CCD I3 on	Y	Y
[deg] Pointing Roll	326.388388	326.5501481145436	CCD S0 on	N	N
[mm] SIM focus pos	-0.782348	-0.7809083437167272	CCD S1 on	N	N
[mm] SIM defocus	0	0.001439871863259334	CCD S2 on	O2	Y
[mm] SIM translation stage pos	-233.592463	-233.5874344608287	CCD S3 on	O1	Y
[mm] SIM translation stage offset	0	-0.005018542100998502	CCD S4 on	N	N
[s] Observation start time (MET)	289411988.184000	289410763.54948	CCD S5 on	N	N
Observation start date	2007-03-04T16:12:03	2007-03-04T15:52:43	Number of optional ACIS chips dropped	0	0
[s] Observation end time (MET)	289421988.184000	289422758.61255	On-chip summing requested	N	N
Observation end date	2007-03-04T18:58:43	2007-03-04T19:12:38	Subarray requested	NONE	NONE
Read mode	TIMED	TIMED	Alternating exposures requested	N	N
			[s] Primary exposure time	0.000000	3.2

2.3 Aspect



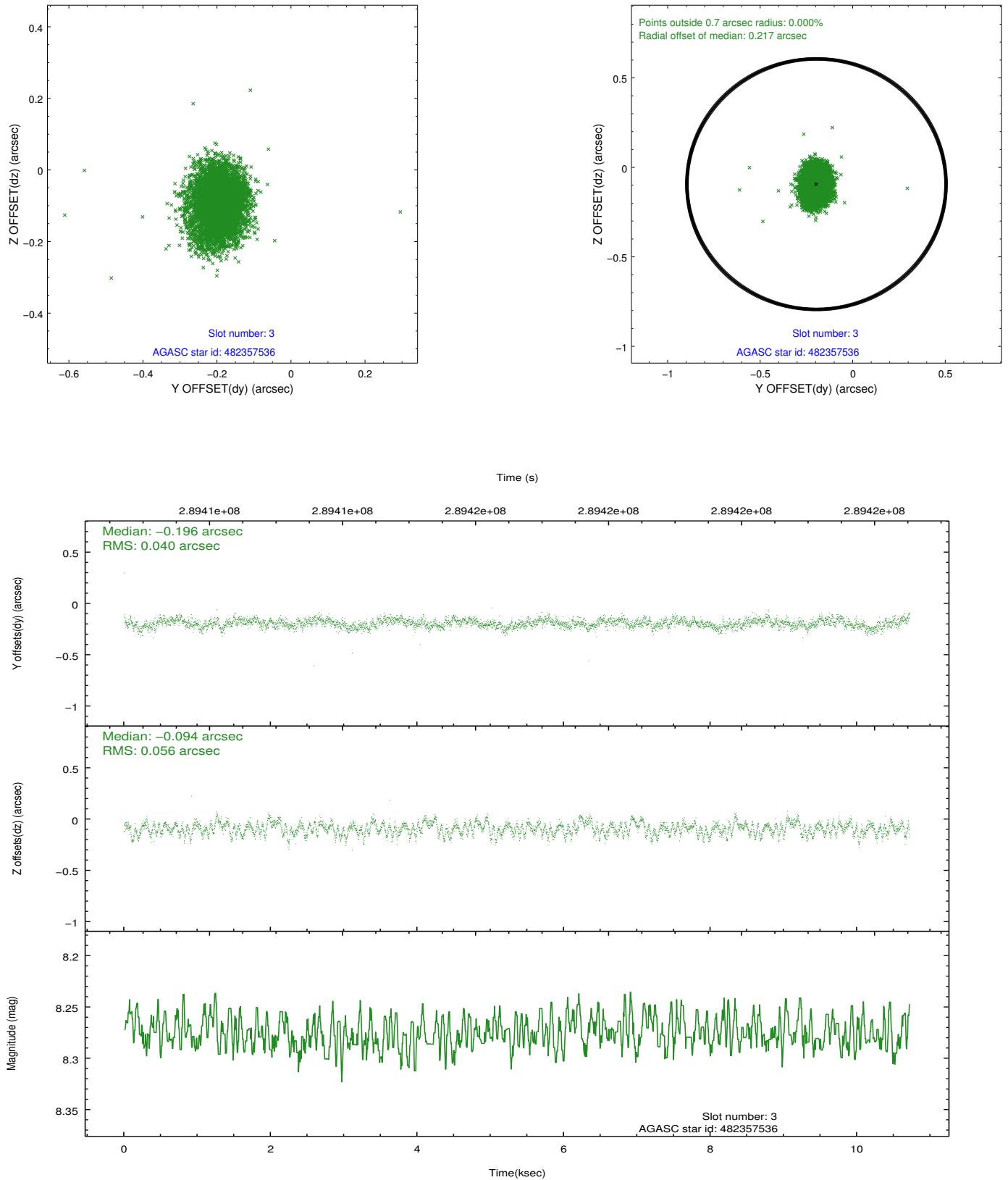


Slot Statistics

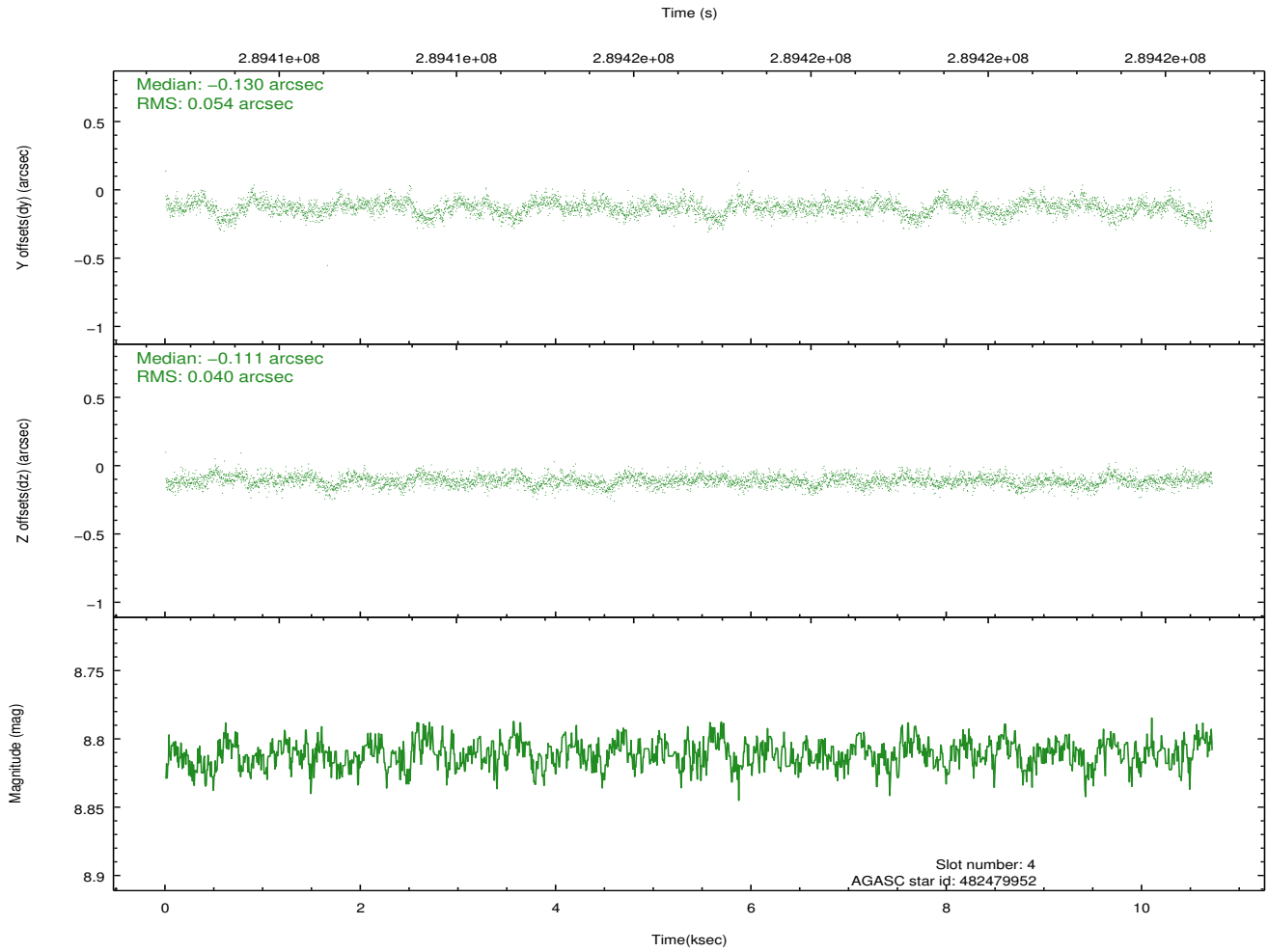
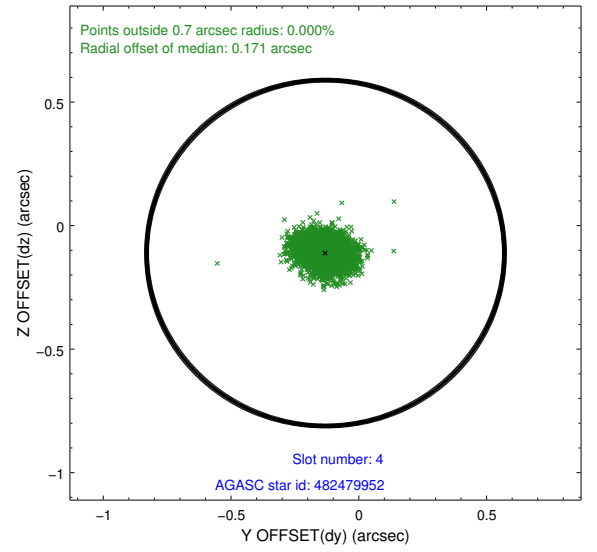
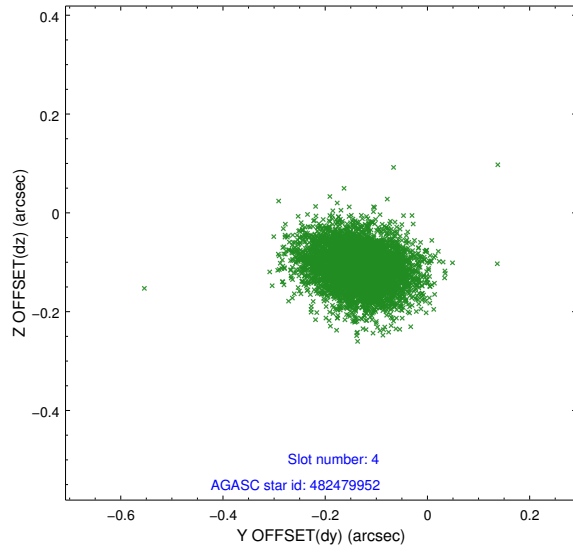
slot	status	id	mag	n_pts	med_dy	med_dz	dr1	dr2	ra	dec	mean_y	mean_z
0	FID	ACIS-I-1	7.23	2614	0.037	-0.013	0.015	0.023	0.000000	0.000000	926.44	-838.16
1	FID	ACIS-I-5	7.22	2612	-0.217	0.039	0.006	0.011	0.000000	0.000000	-1821.67	1059.12
2	FID	ACIS-I-6	7.24	2614	0.088	0.046	0.014	0.022	0.000000	0.000000	391.49	1704.19
3	GUIDE	482357536	8.28	5227	-0.196	-0.094	0.072	0.118	15.507169	59.545792	-1484.59	-1528.05
4	GUIDE	482479952	8.81	5224	-0.130	-0.111	0.069	0.118	17.936134	59.620137	2050.80	1149.17
5	GUIDE	482480440	9.23	5223	0.571	0.321	0.100	0.160	17.678136	59.570367	1767.07	735.62
6	GUIDE	482483336	8.33	5225	-0.133	-0.074	0.063	0.104	17.017699	59.371537	1170.12	-535.93
7	GUIDE	526532920	9.29	5223	-0.108	-0.036	0.102	0.163	16.530881	60.311054	-1440.04	1788.22

2.4 Star Slots

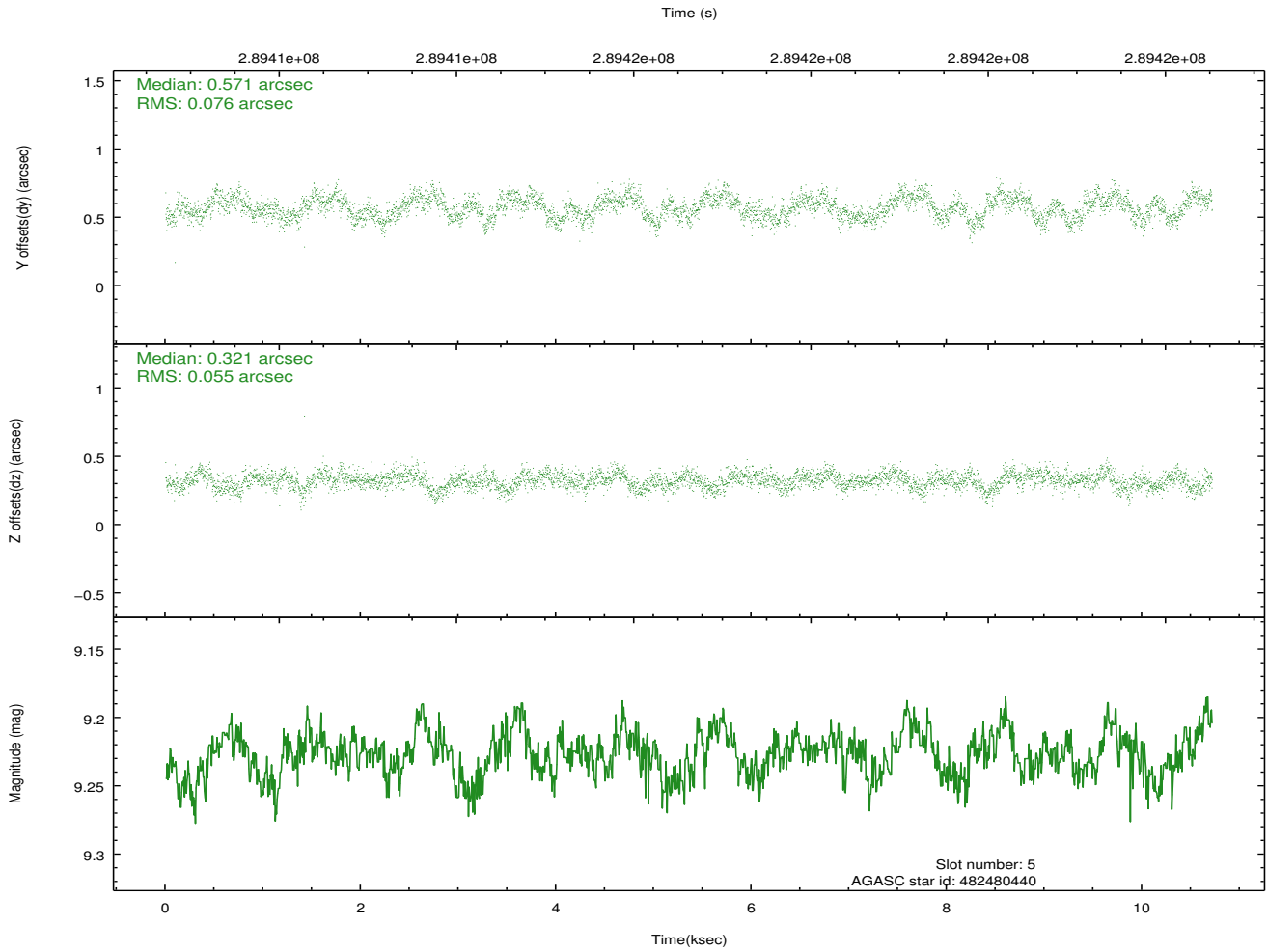
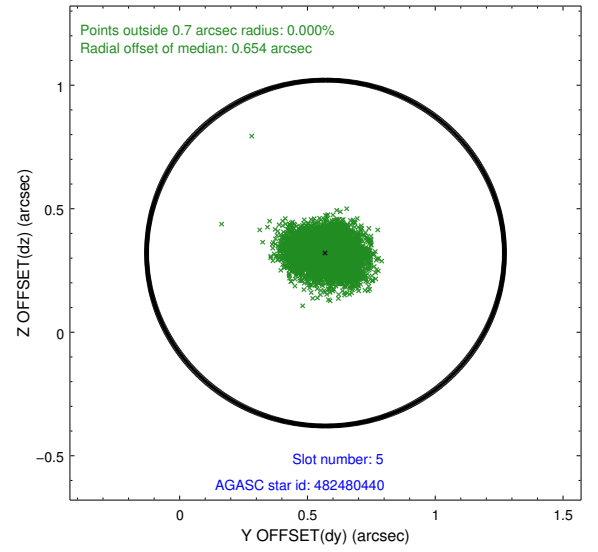
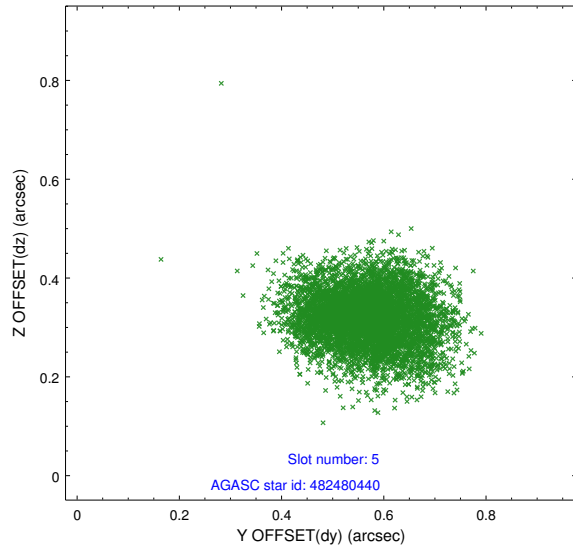
2.4.1 Slot 3



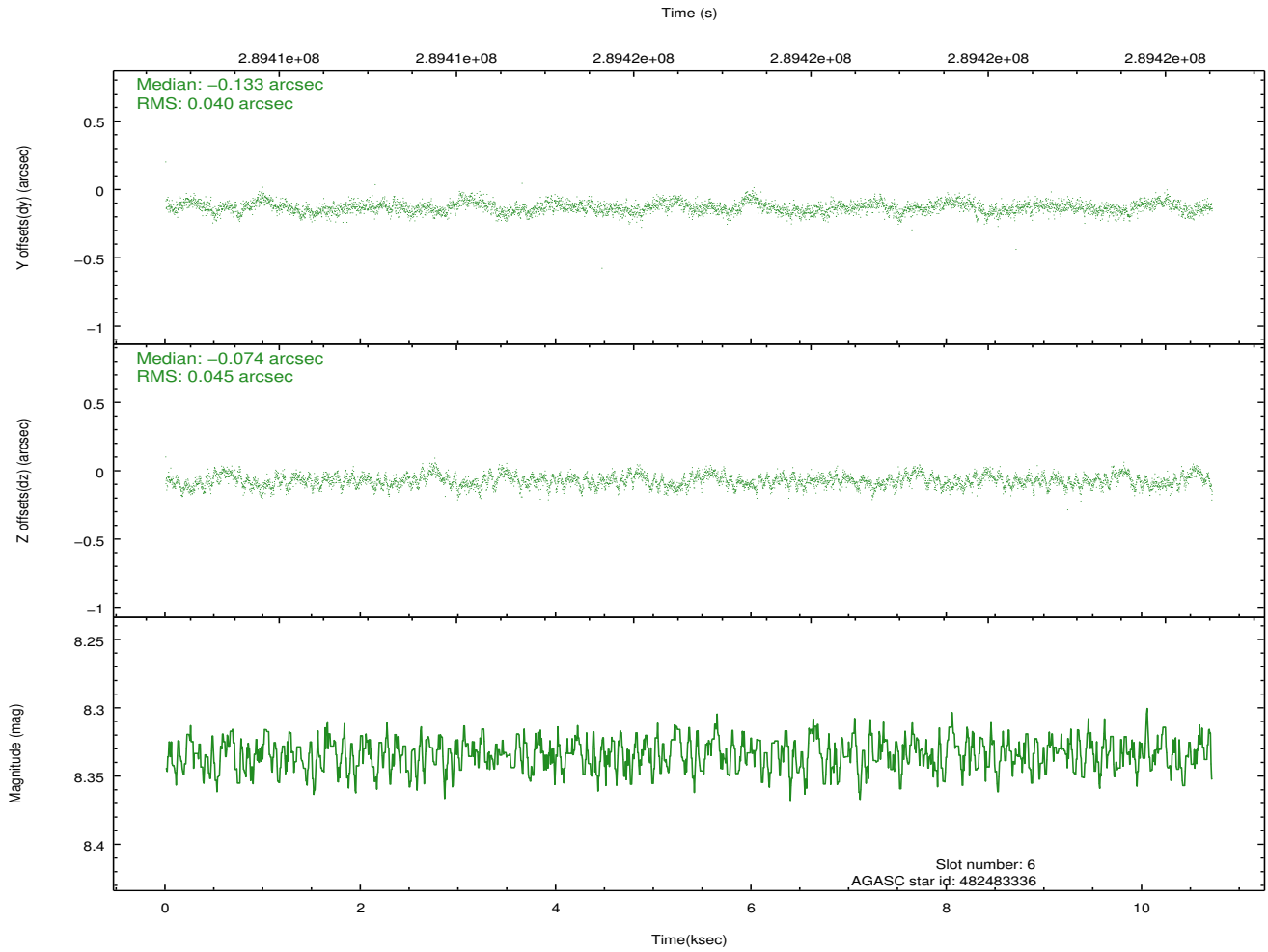
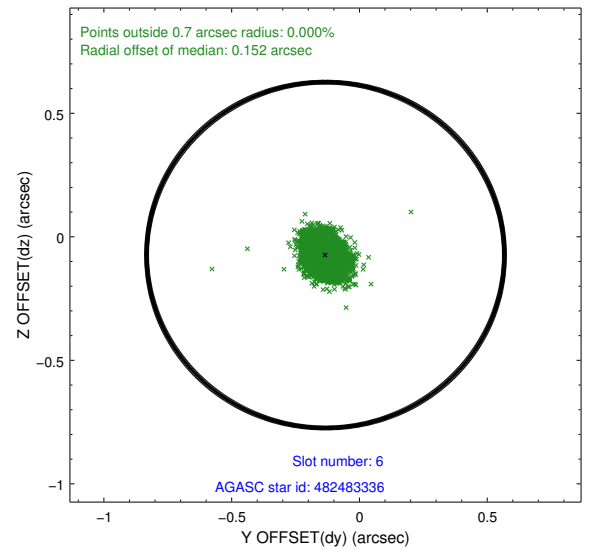
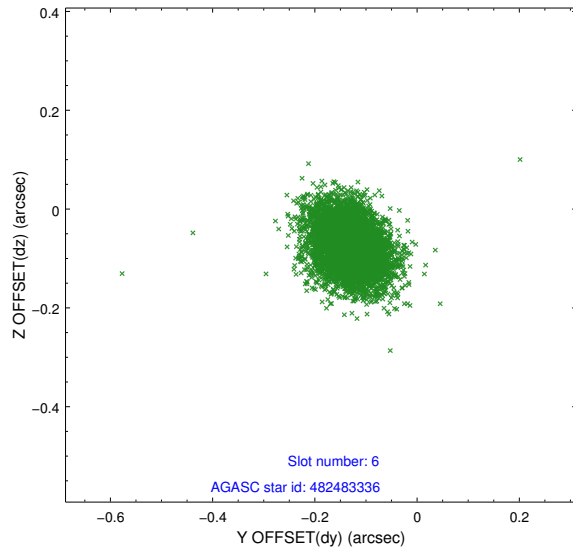
2.4.2 Slot 4



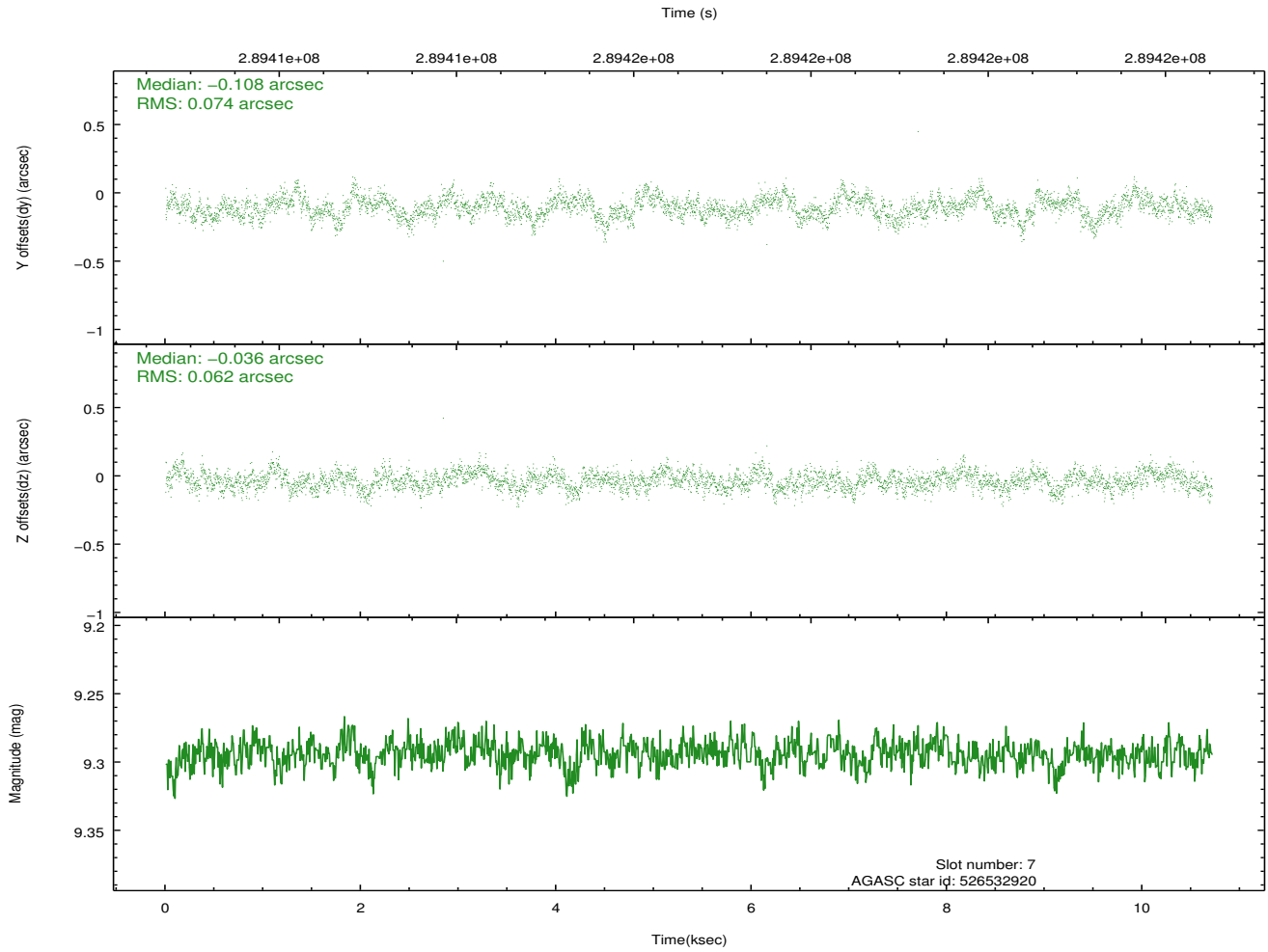
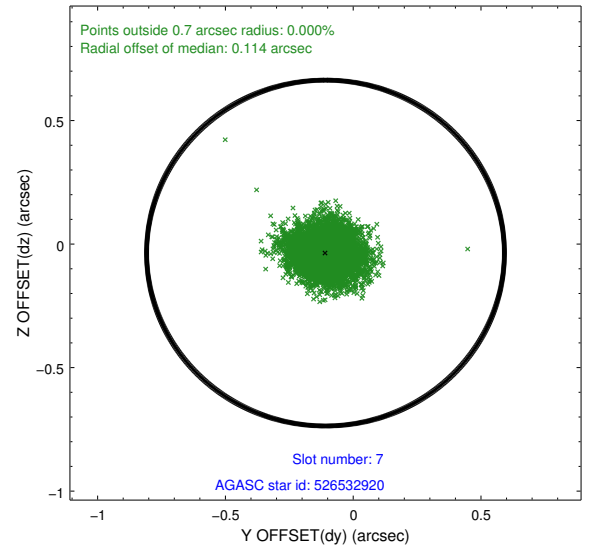
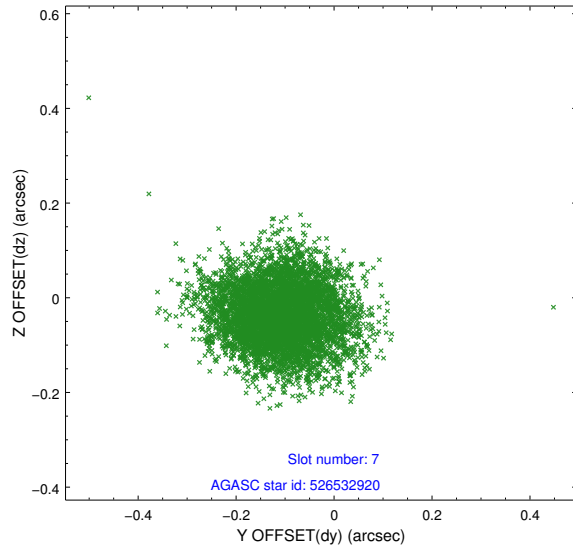
2.4.3 Slot 5



2.4.4 Slot 6

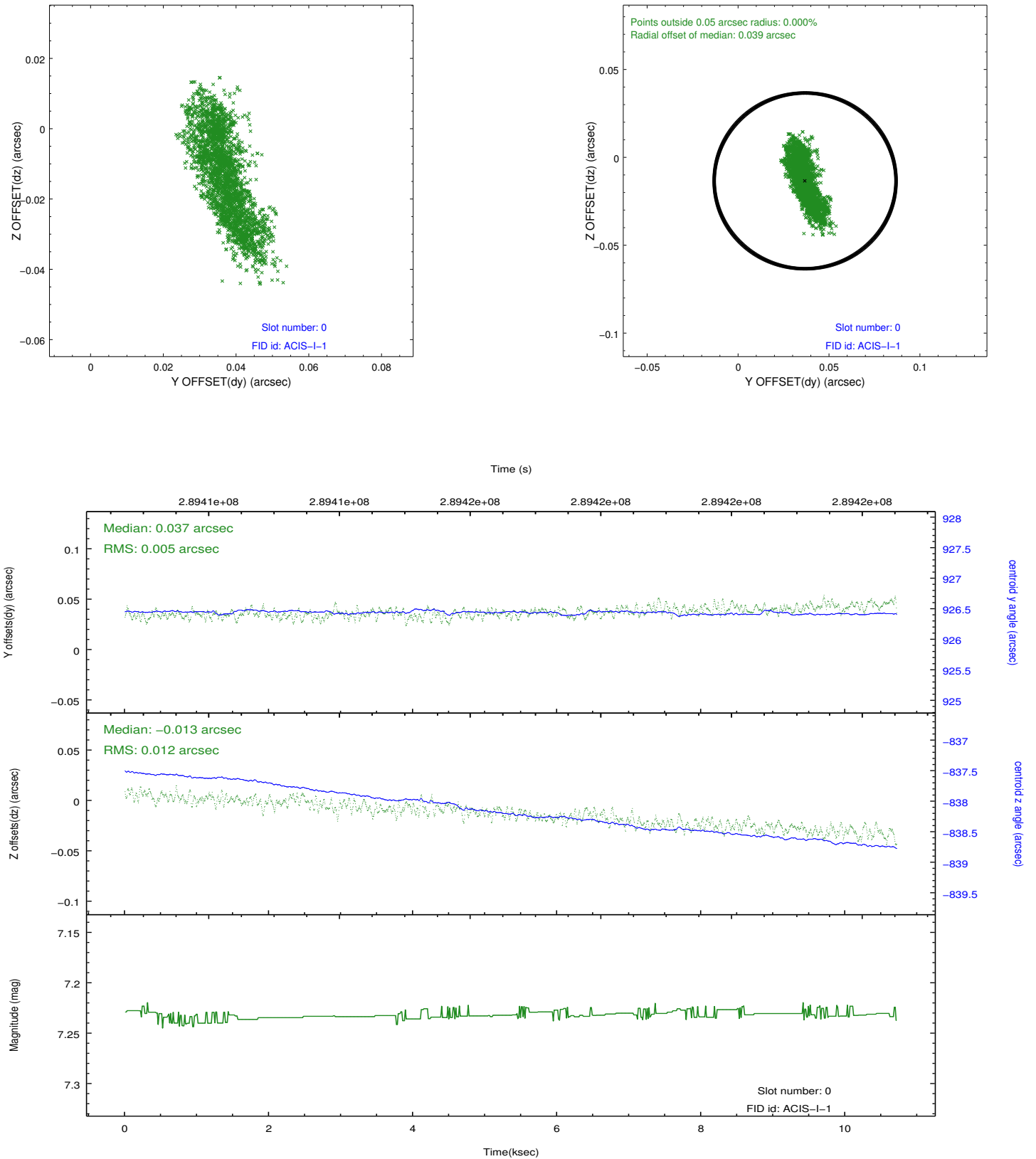


2.4.5 Slot 7

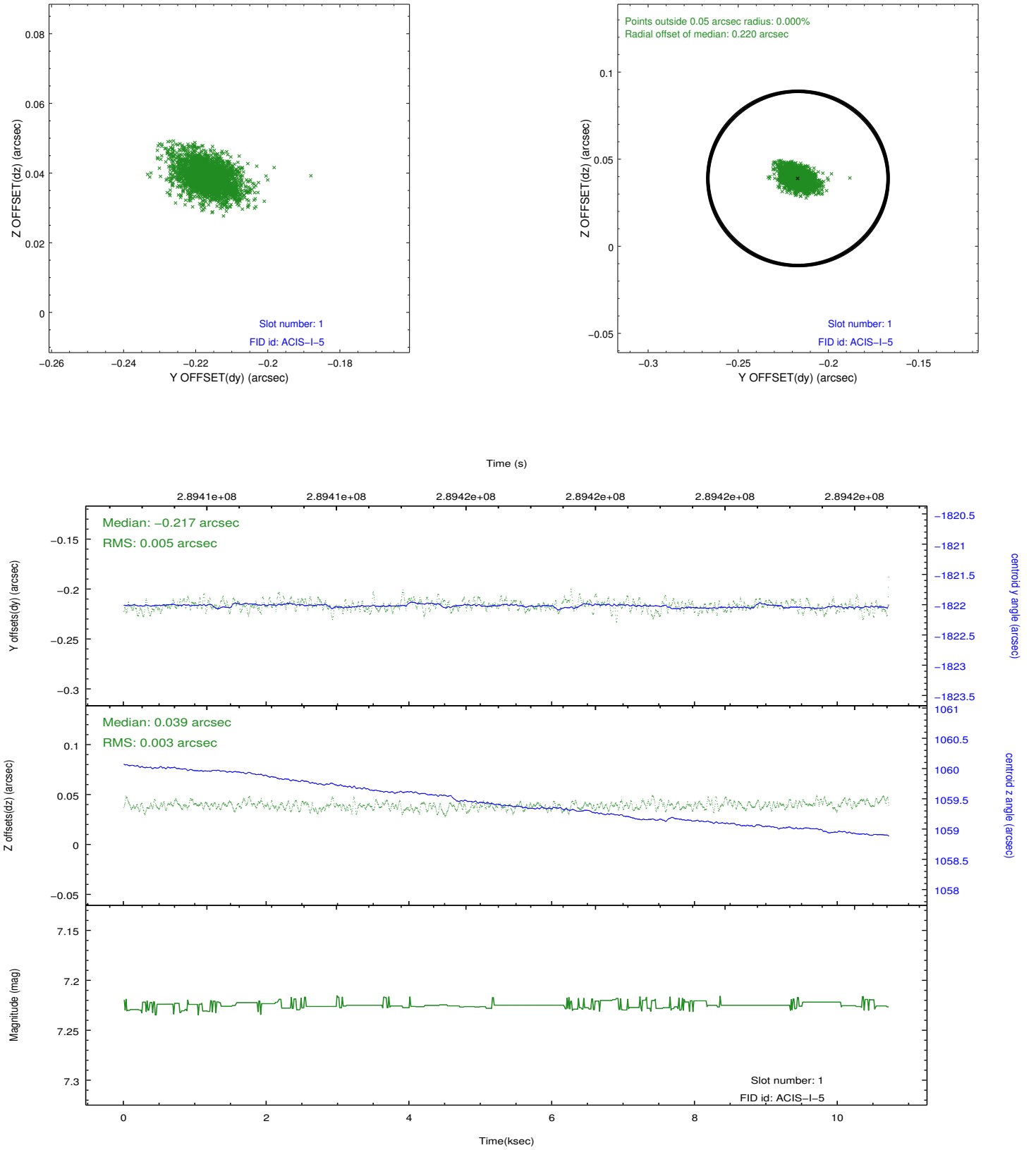


2.5 FID Slots

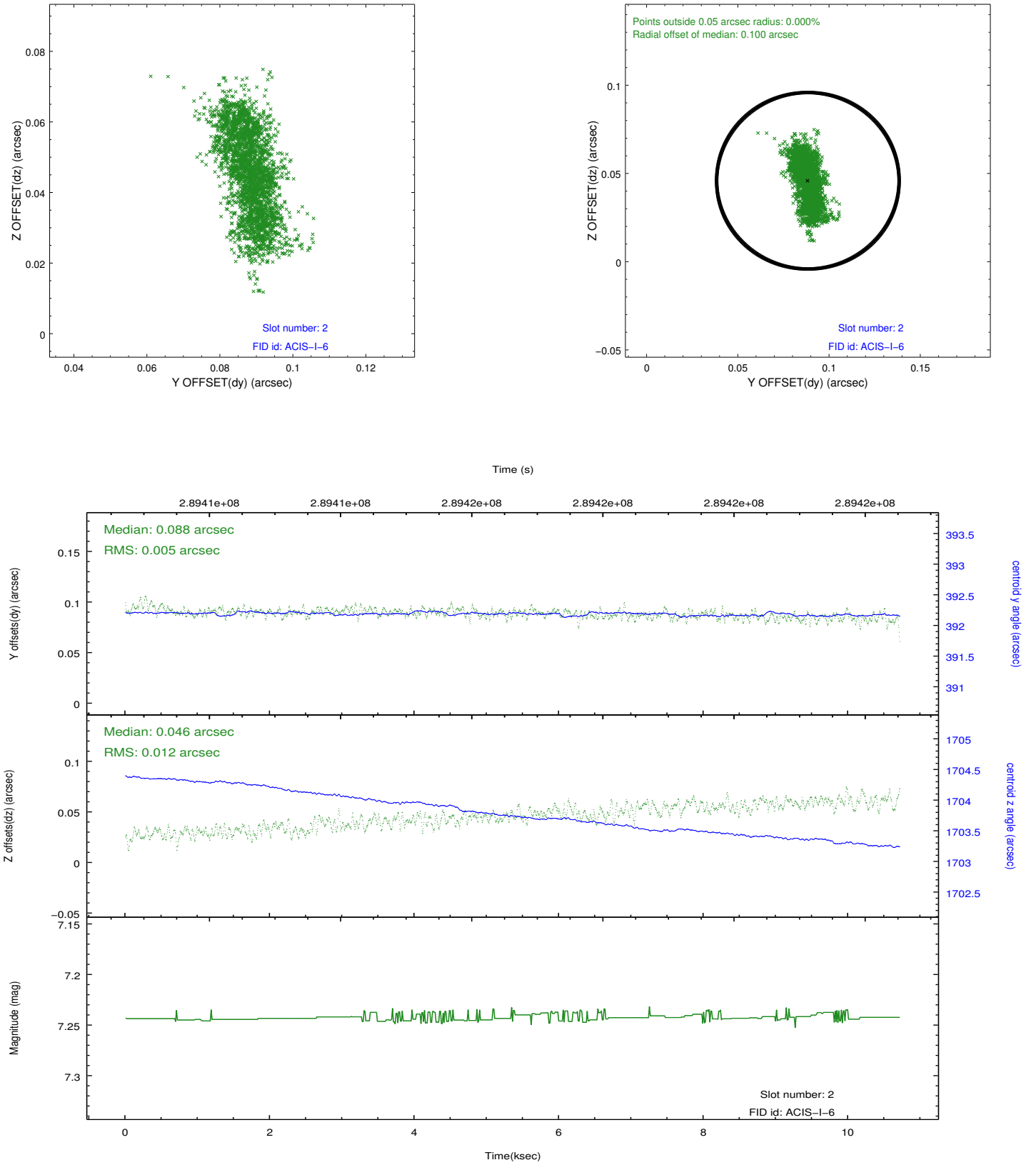
2.5.1 Slot 0



2.5.2 Slot 1



2.5.3 Slot 2



A Summary

A.1 Status

V&V Scientist	Beth Sundheim
V&V Date (YYYY-MM-DD)	2012.04.22
V&V Edition	1
V&V Disposition and Status	OK
V&V Charge Time	9.95199996

A.2 Comments