

V&V Reference Report

L2 ASCDS Version : 8.4.3.1

Observation 6966 - L2 Version 2
Chandra X-Ray Center

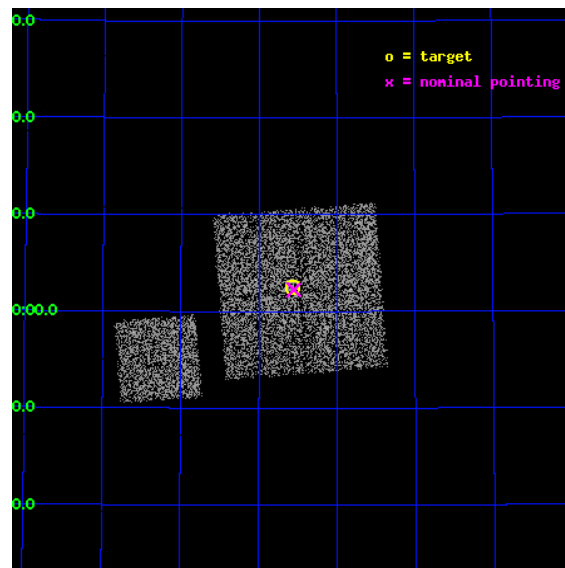
L2 Processing Date : Apr 3 2012

Contents

1	Front	2
2	OBI	3
2.1	OBI	3
2.1.1	Images	3
2.1.2	Bias	3
2.1.3	Parameters	4
2.1.4	Events	4
2.2	Compared Parameters	5
2.3	Aspect	6
2.4	Star Slots	9
2.4.1	Slot 3	9
2.4.2	Slot 4	10
2.4.3	Slot 5	11
2.4.4	Slot 6	12
2.4.5	Slot 7	13
2.5	FID Slots	14
2.5.1	Slot 0	14
2.5.2	Slot 1	15
2.5.3	Slot 2	16
A	Summary	17
A.1	Status	17
A.2	Comments	17

1 Front

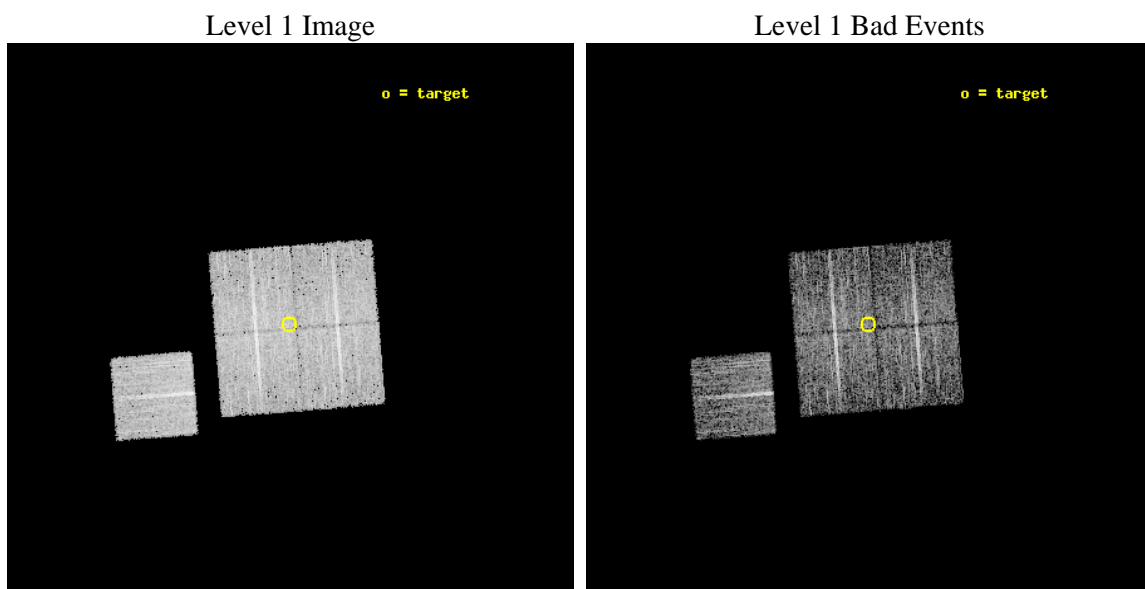
seq_num	800599	Sequence number
obs_id	6966	Observation id
title	A Search for the Origin of Ultrahigh Energy Cosmic Rays	Proposal t
observer	Prof. David Helfand	Principal investigator
object	P10	Source name
dtcycle	0	
cycle	P	events from which exps? Prim/Second/Both
ra_targ	168.642	Observer's specified target RA [deg]
dec_targ	57.0417	Observer's specified target Dec [deg]
ra_nom	168.63812709733	Nominal RA [deg]
dec_nom	57.037502435678	Nominal Dec [deg]
roll_nom	265.48750948749	Nominal Roll [deg]
revision	2	Processing version of data
ontime	4776.7890127301	Sum of GTIs [s]
livetime	4714.3767476579	Livetime [s]
ontime0	4776.6658728123	Sum of GTIs [s]
ontime1	4776.7069327235	Sum of GTIs [s]
ontime2	4776.7479727268	Sum of GTIs [s]
ontime3	4776.7890127301	Sum of GTIs [s]
ontime6	4776.6248527169	Sum of GTIs [s]
l2events	15230	Number of level 2 events



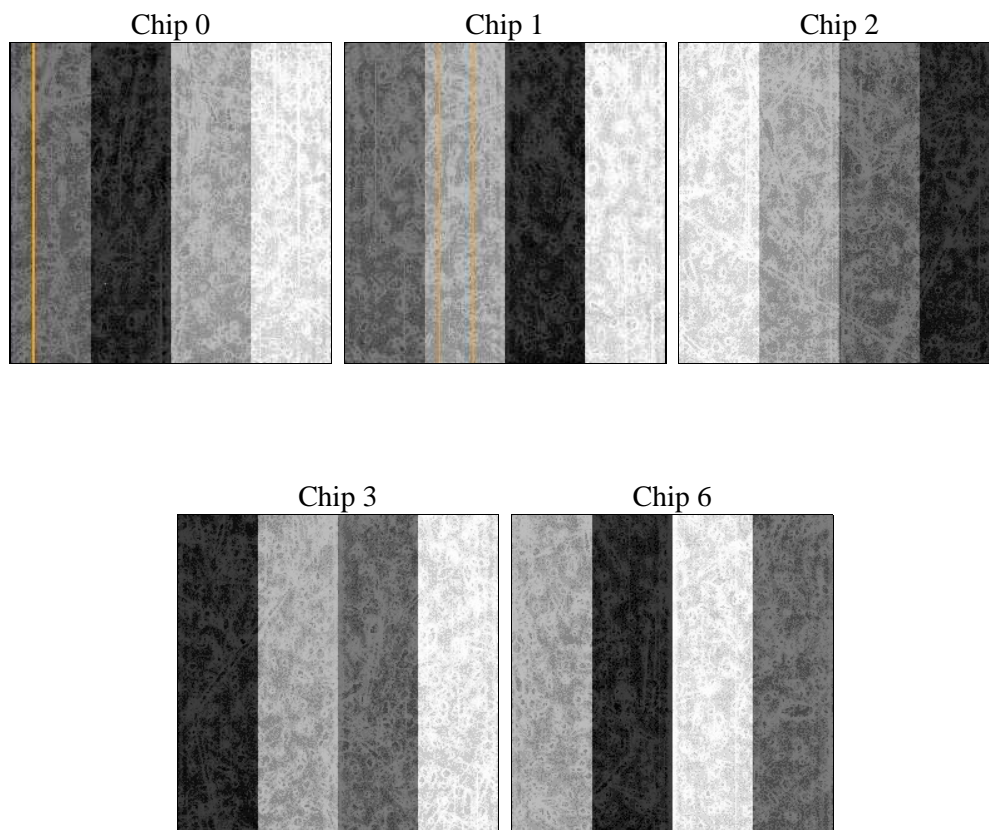
2 OBI

2.1 OBI

2.1.1 Images



2.1.2 Bias



2.1.3 Parameters

obi_num	0	Obi number	sched_exp_time	5000.000000	[s] Scheduled observation exposure time
ascdsver	8.4.3	Processing system revision	ontime	4776.7890127301	Sum of GTIs [s]
caldsver	4.4.9	 	ontime0	4776.6658728123	Sum of GTIs [s]
date	2012-04-04T00:05:35	Date and time of file creation	ontime1	4776.7069327235	Sum of GTIs [s]
revision	2	Processing version of data	ontime2	4776.7479727268	Sum of GTIs [s]
			ontime3	4776.7890127301	Sum of GTIs [s]
			ontime6	4776.6248527169	Sum of GTIs [s]
			l1events	180564	Number of level 1 events

2.1.4 Events

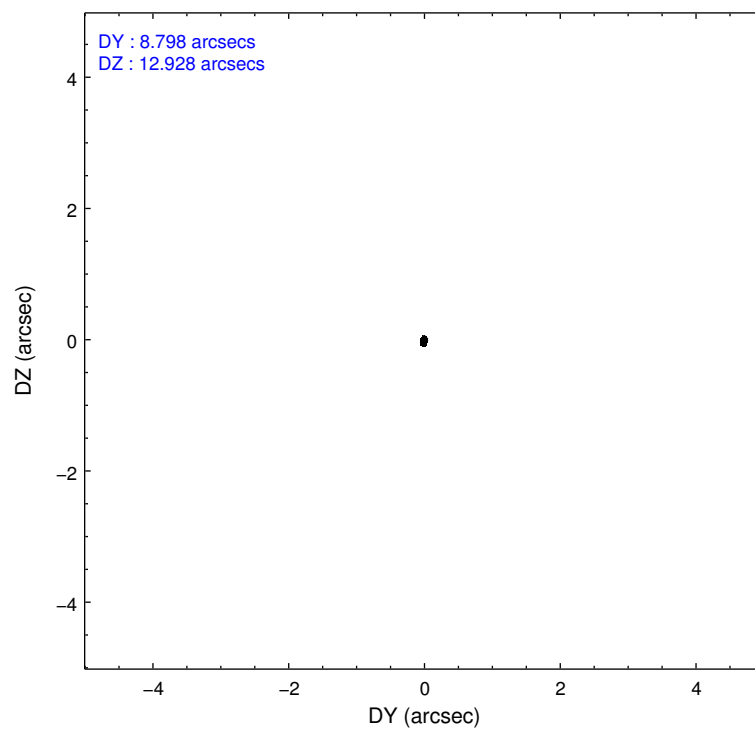
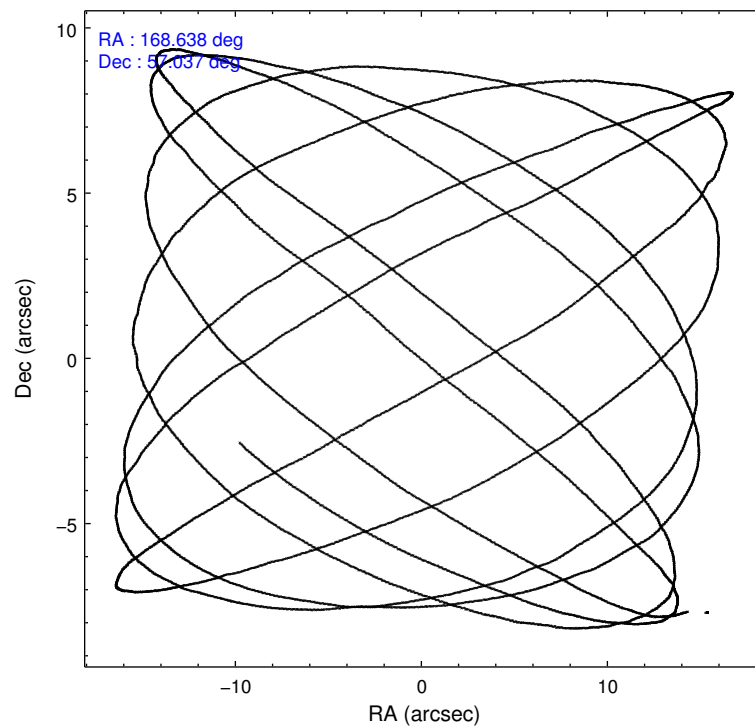
	ccd 0	ccd 1	ccd 2	ccd 3	ccd 6
level 1 events	34933	33039	37069	36590	38933
rejected events	31287	29039	33571	33131	35219
rejected %	89%	87%	90%	90%	90%

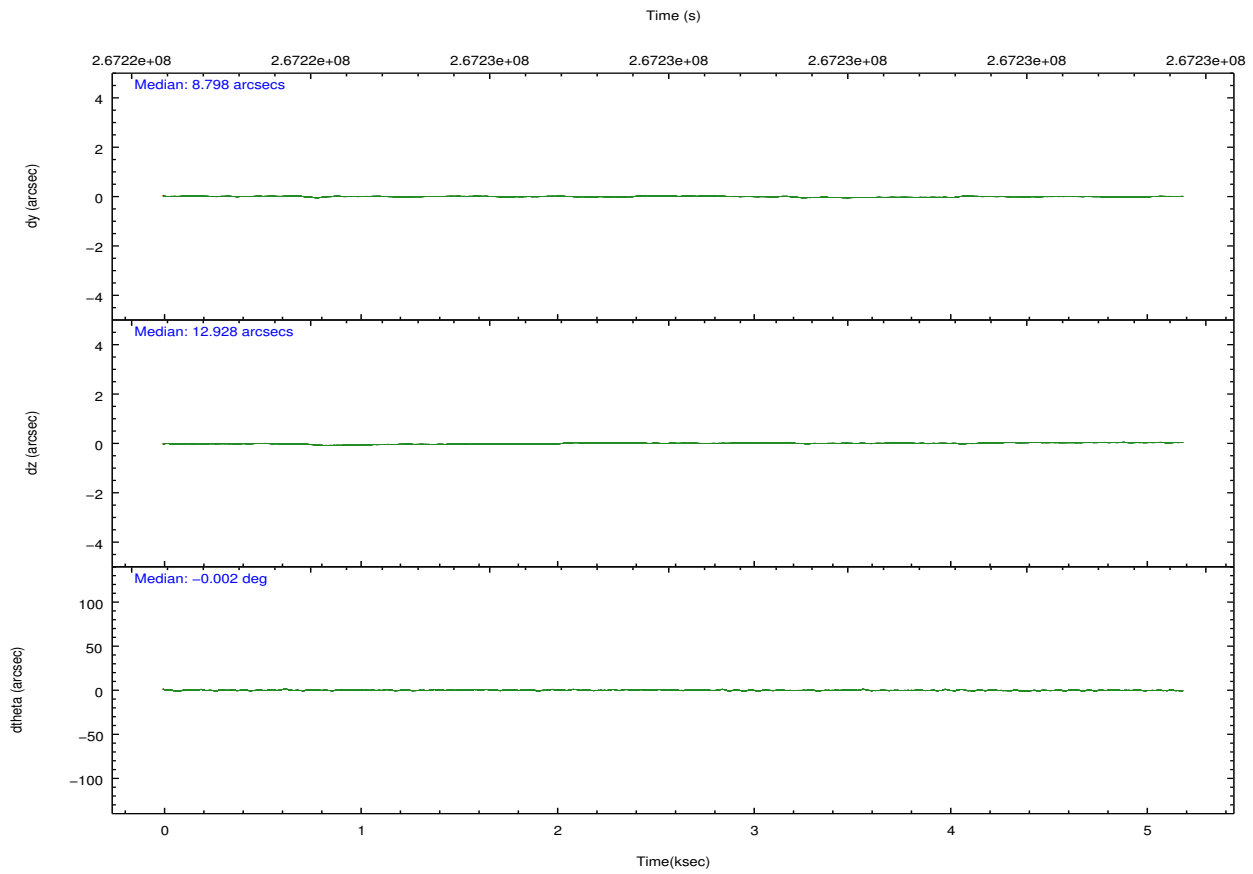
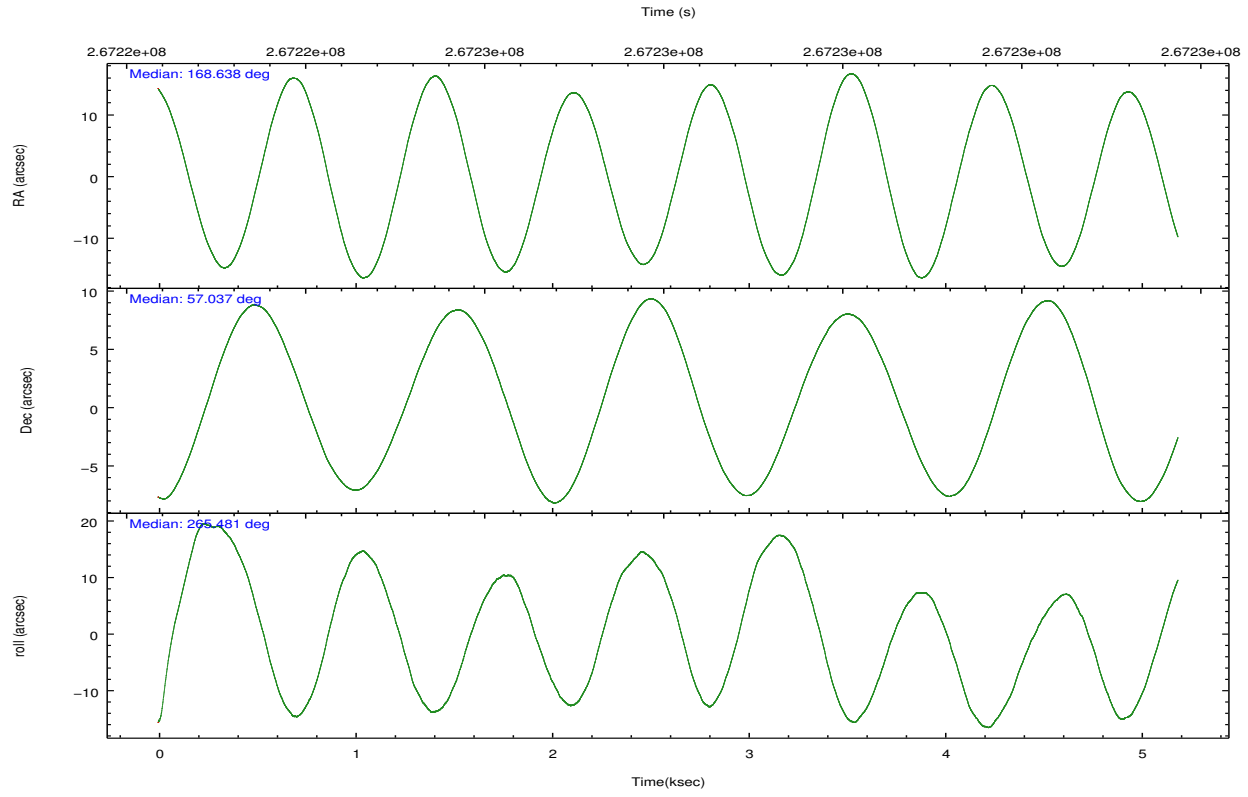
	ccd 0	ccd 1	ccd 2	ccd 3	ccd 6
grade 0 events	1285	1494	1149	1360	1281
	3%	4%	3%	3%	3%
grade 1 events	10	20	20	19	17
	0%	0%	0%	0%	0%
grade 2 events	882	838	864	715	816
	2%	2%	2%	1%	2%
grade 3 events	414	450	374	382	395
	1%	1%	1%	1%	1%
grade 4 events	372	452	410	364	431
	1%	1%	1%	0%	1%
grade 5 events	1165	1346	1129	1449	1468
	3%	4%	3%	3%	3%
grade 6 events	695	767	701	641	799
	1%	2%	1%	1%	2%
grade 7 events	30110	27672	32422	31660	33726
	86%	83%	87%	86%	86%

2.2 Compared Parameters

Parameter	Planned	Actual	Parameter	Planned	Actual
Instrument	ACIS	ACIS	Obspar format version number	7	7
Detector	ACIS-01236	ACIS-01236	Obspar file type	PREDICTED	ACTUAL
Grating	NONE	NONE	Obspar update status	NONE	UPDATED
Data mode	VFAINT	VFAINT	Number of optional ACIS chips dropped	0	0
Observation mode	POINTING	POINTING	On-chip summing requested	N	N
[deg] Pointing RA	168.616203	168.6381270973294	Subarray requested	NONE	NONE
[deg] Pointing Dec	57.062259	57.03750243567825	Alternating exposures requested	N	N
[deg] Pointing Roll	265.297270	265.487509487488	[s] Primary exposure time	0.000000	3.1
[mm] SIM focus pos	-0.782348	-0.7809083437167272			
[mm] SIM defocus	0	0.001439871863259334			
[mm] SIM translation stage pos	-233.592463	-233.5874344608287			
[mm] SIM translation stage offset	0	-0.005018542100998502			
[s] Observation start time (MET)	267224612.184000	267224236.7281			
Observation start date	2006-06-20T21:02:27	2006-06-20T20:57:16			
[s] Observation end time (MET)	267229612.184000	267229747.12836			
Observation end date	2006-06-20T22:25:47	2006-06-20T22:29:07			
Read mode	TIMED	TIMED			

2.3 Aspect



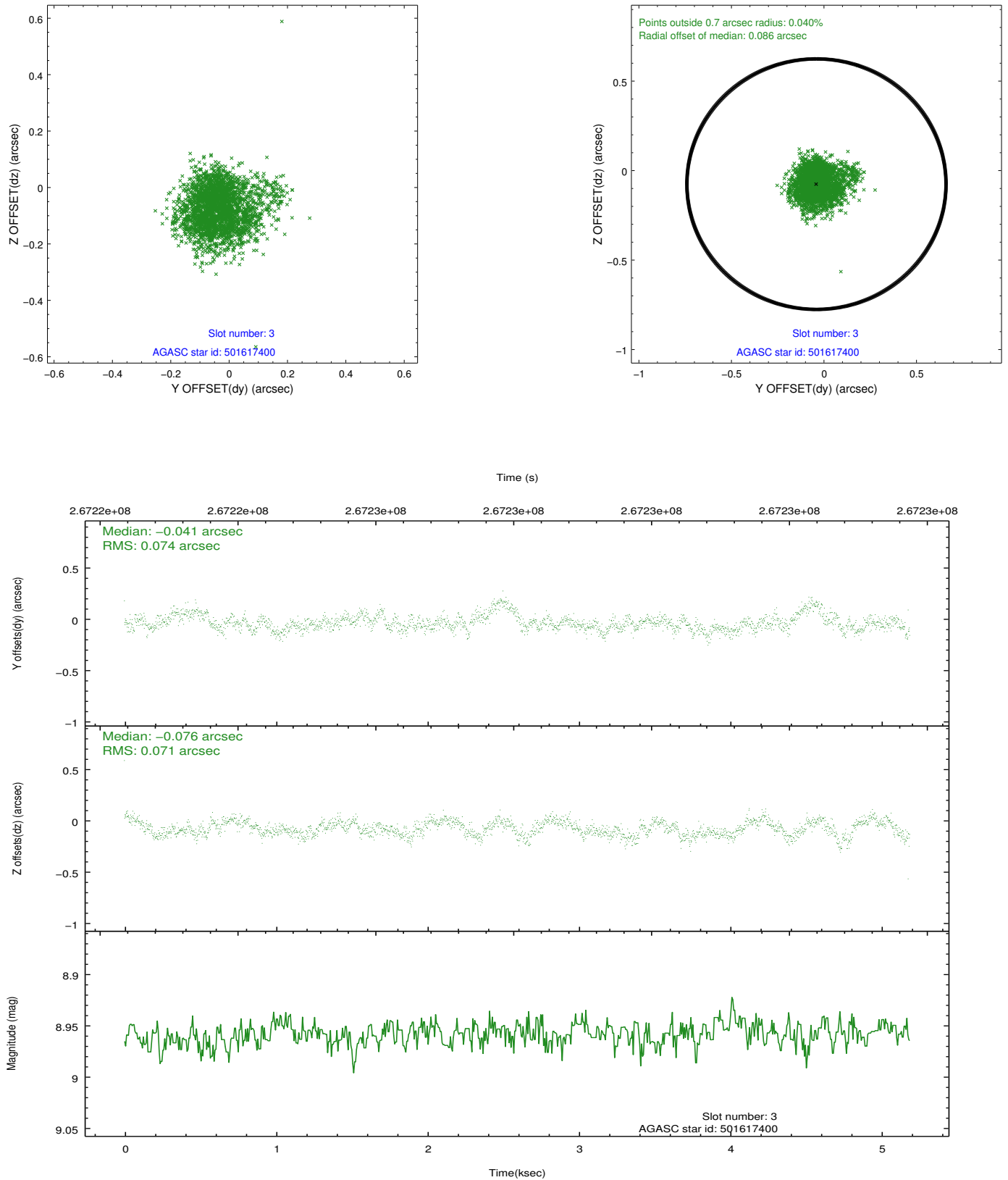


Slot Statistics

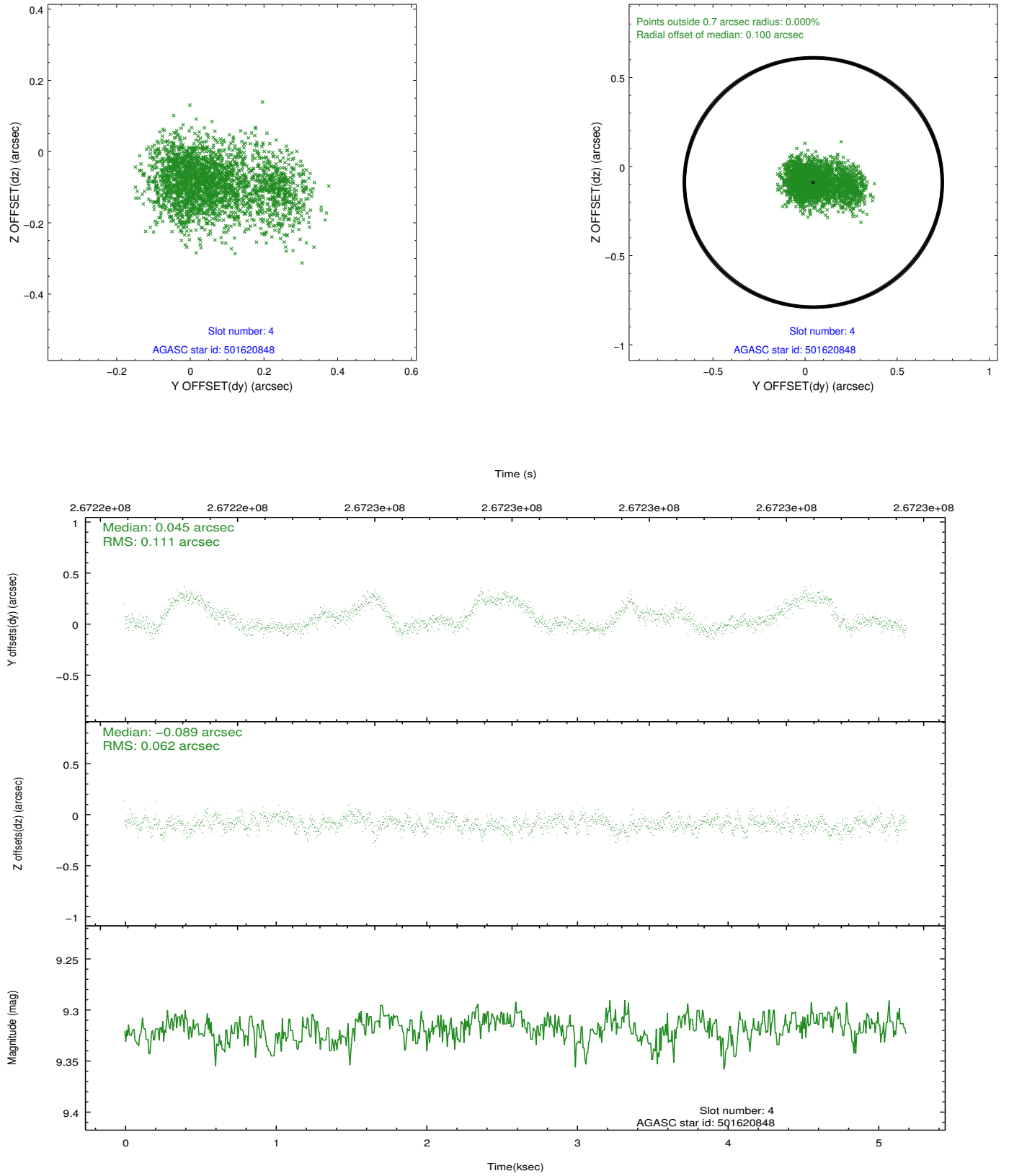
slot	status	id	mag	n_pts	med_dy	med_dz	dr1	dr2	ra	dec	mean_y	mean_z
0	FID	ACIS-I-1	7.24	1266	0.039	-0.000	0.006	0.011	0.000000	0.000000	930.87	-836.48
1	FID	ACIS-I-5	7.24	1266	-0.195	0.051	0.006	0.010	0.000000	0.000000	-1816.81	1060.50
2	FID	ACIS-I-6	7.24	1266	0.064	0.019	0.006	0.011	0.000000	0.000000	395.19	1706.28
3	GUIDE	501617400	8.96	2531	-0.041	-0.076	0.107	0.178	167.619761	56.497458	2174.57	-1807.66
4	GUIDE	501620848	9.32	2529	0.045	-0.089	0.131	0.235	167.963691	57.281851	-688.90	-1331.45
5	GUIDE	501747056	10.25	2526	0.072	0.097	0.200	0.336	169.256851	56.508688	1875.36	1431.26
6	GUIDE	501747432	9.89	2530	0.024	0.111	0.147	0.253	169.486750	57.497356	-1709.48	1549.64
7	GUIDE	502137856	10.07	2524	-0.110	-0.052	0.159	0.268	169.016576	57.682544	-2291.60	585.40

2.4 Star Slots

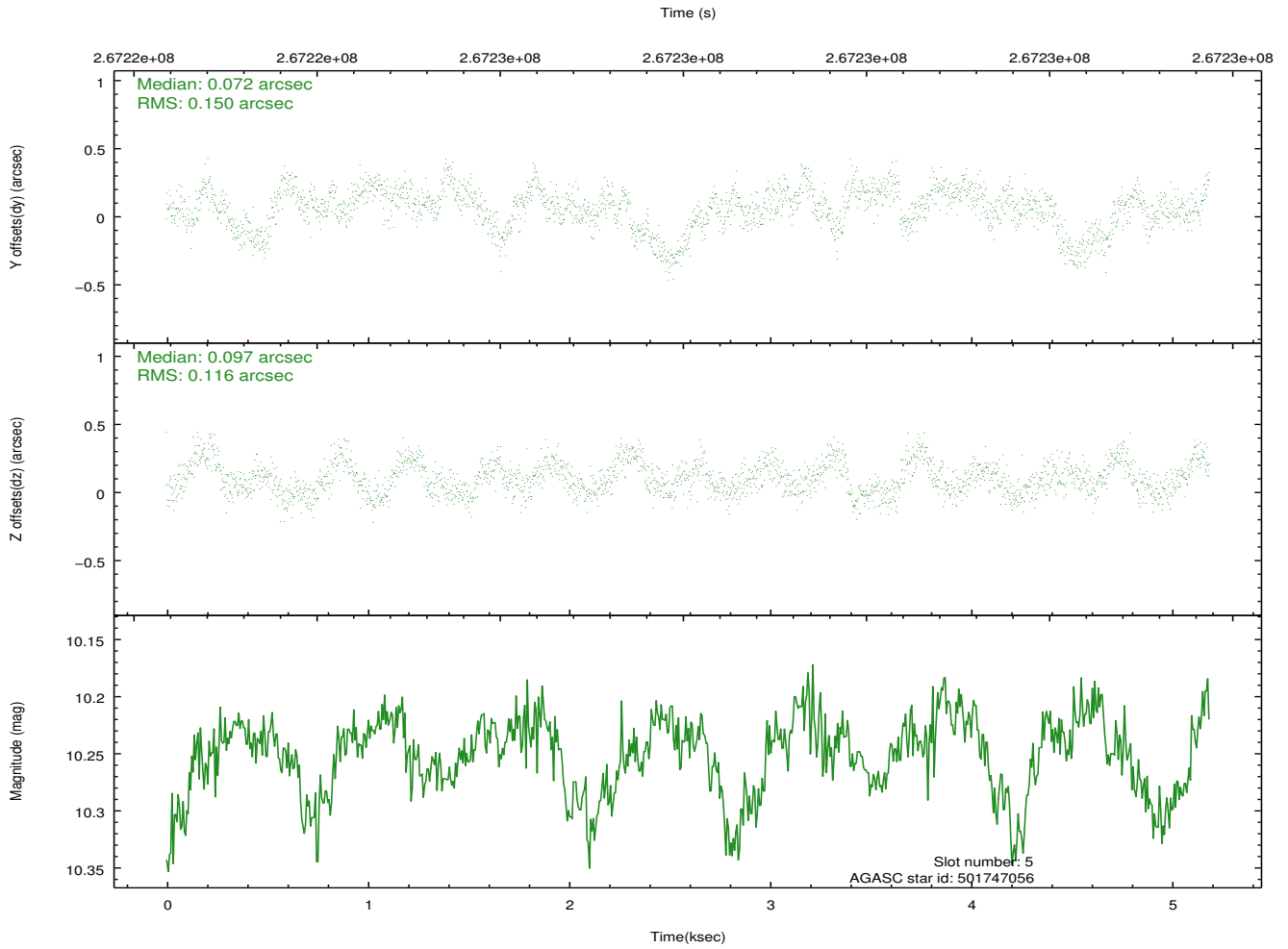
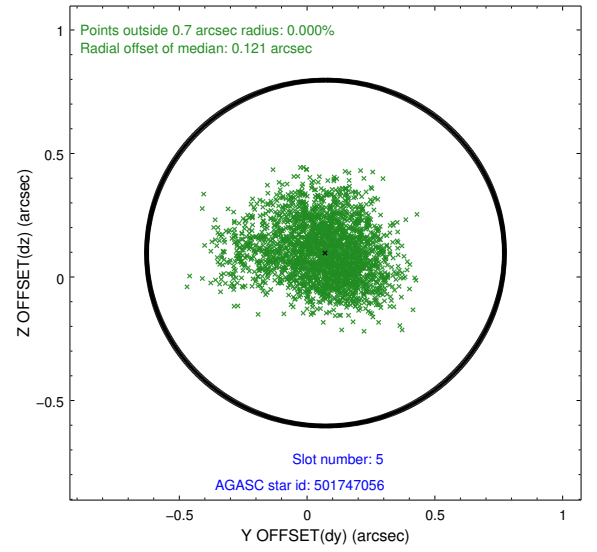
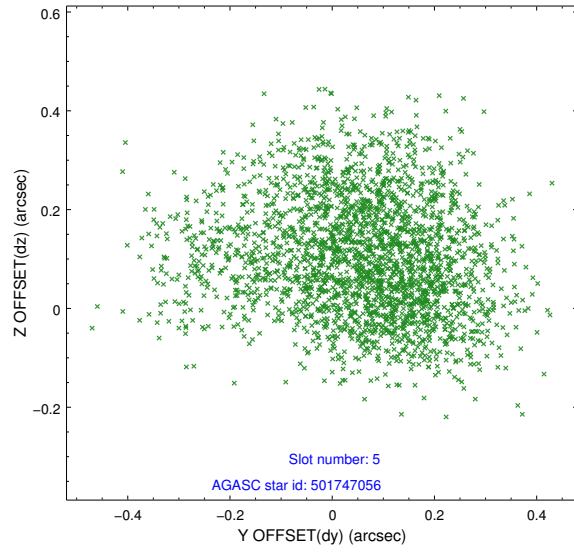
2.4.1 Slot 3



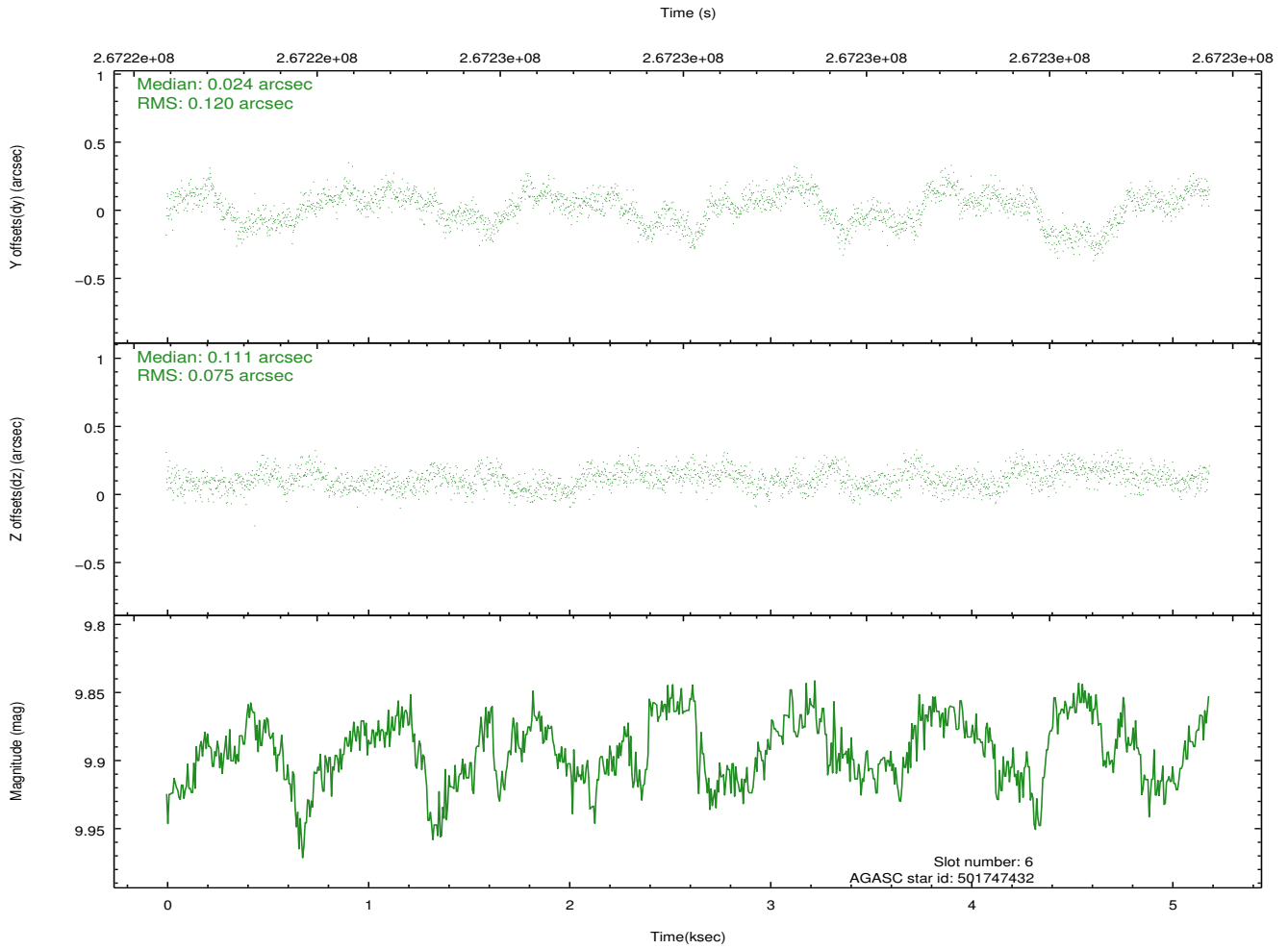
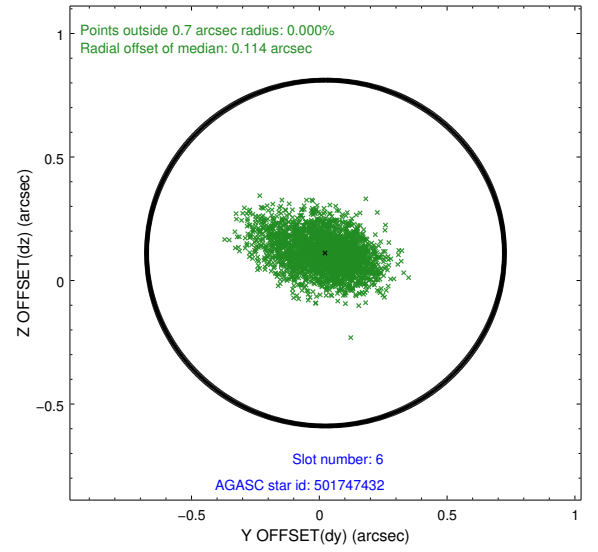
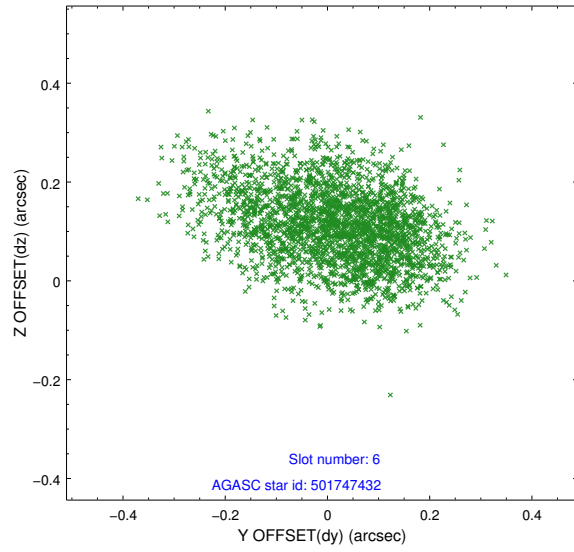
2.4.2 Slot 4



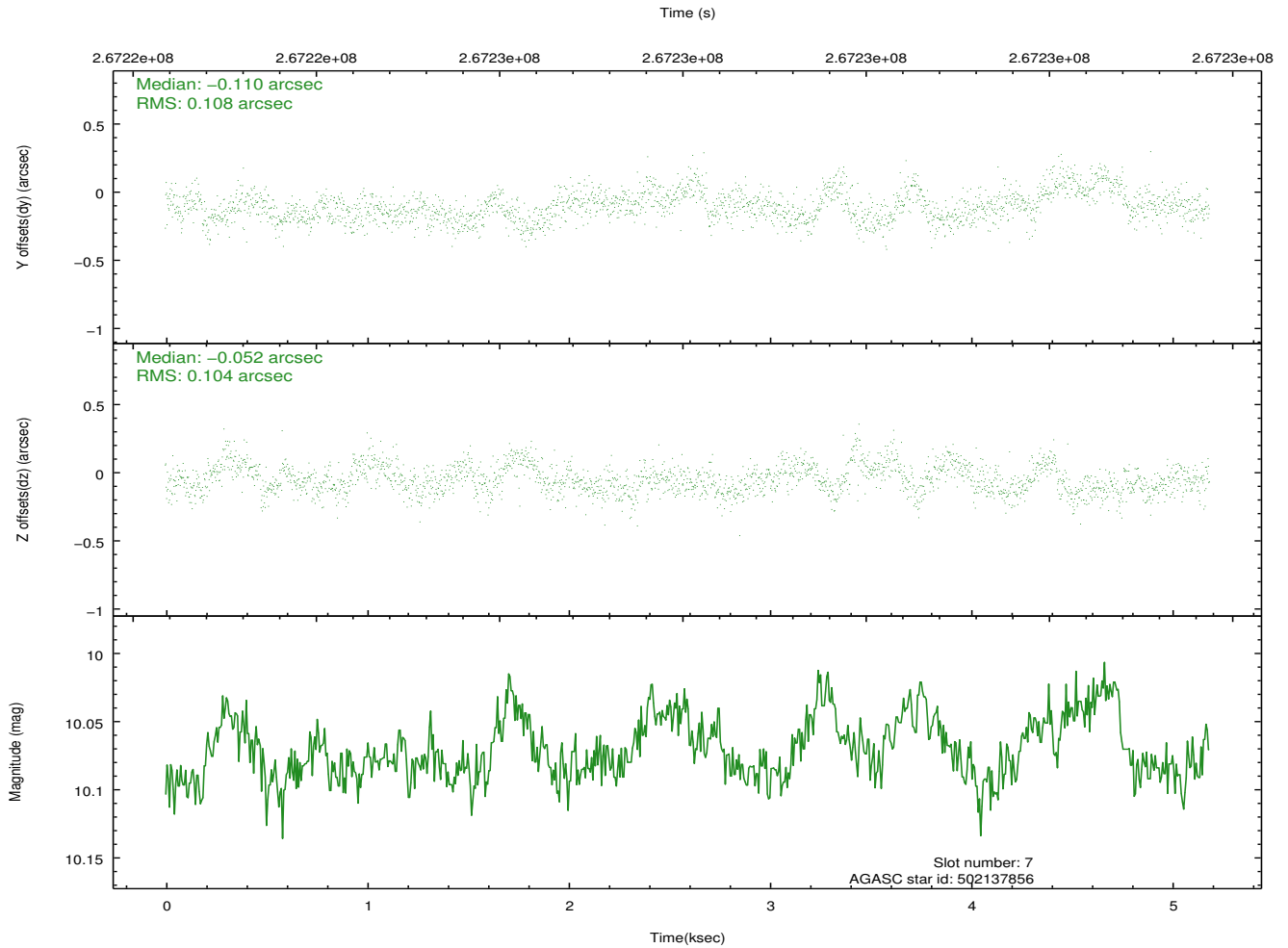
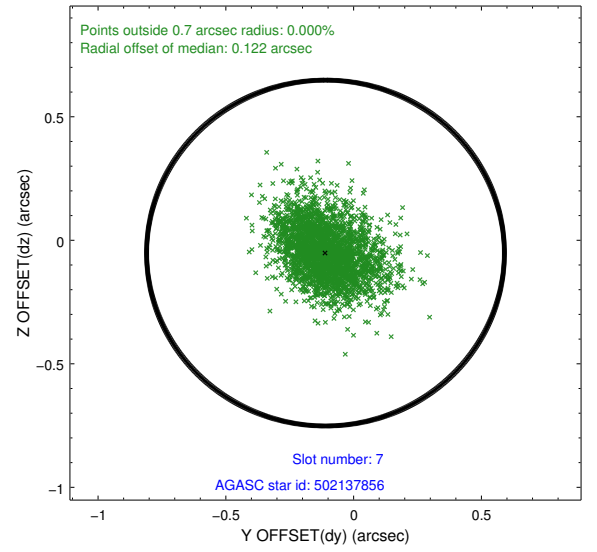
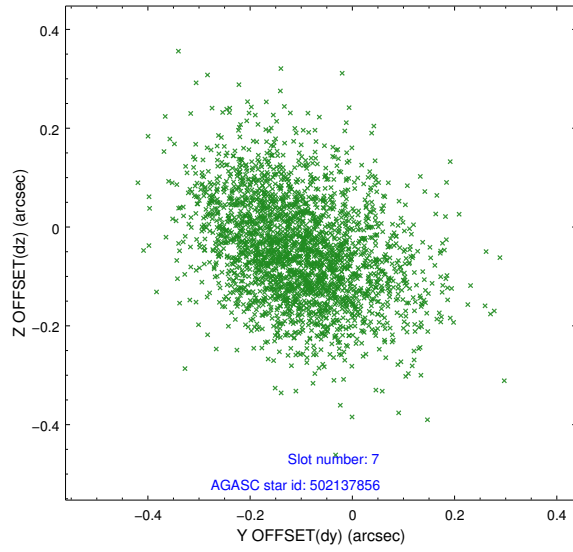
2.4.3 Slot 5



2.4.4 Slot 6

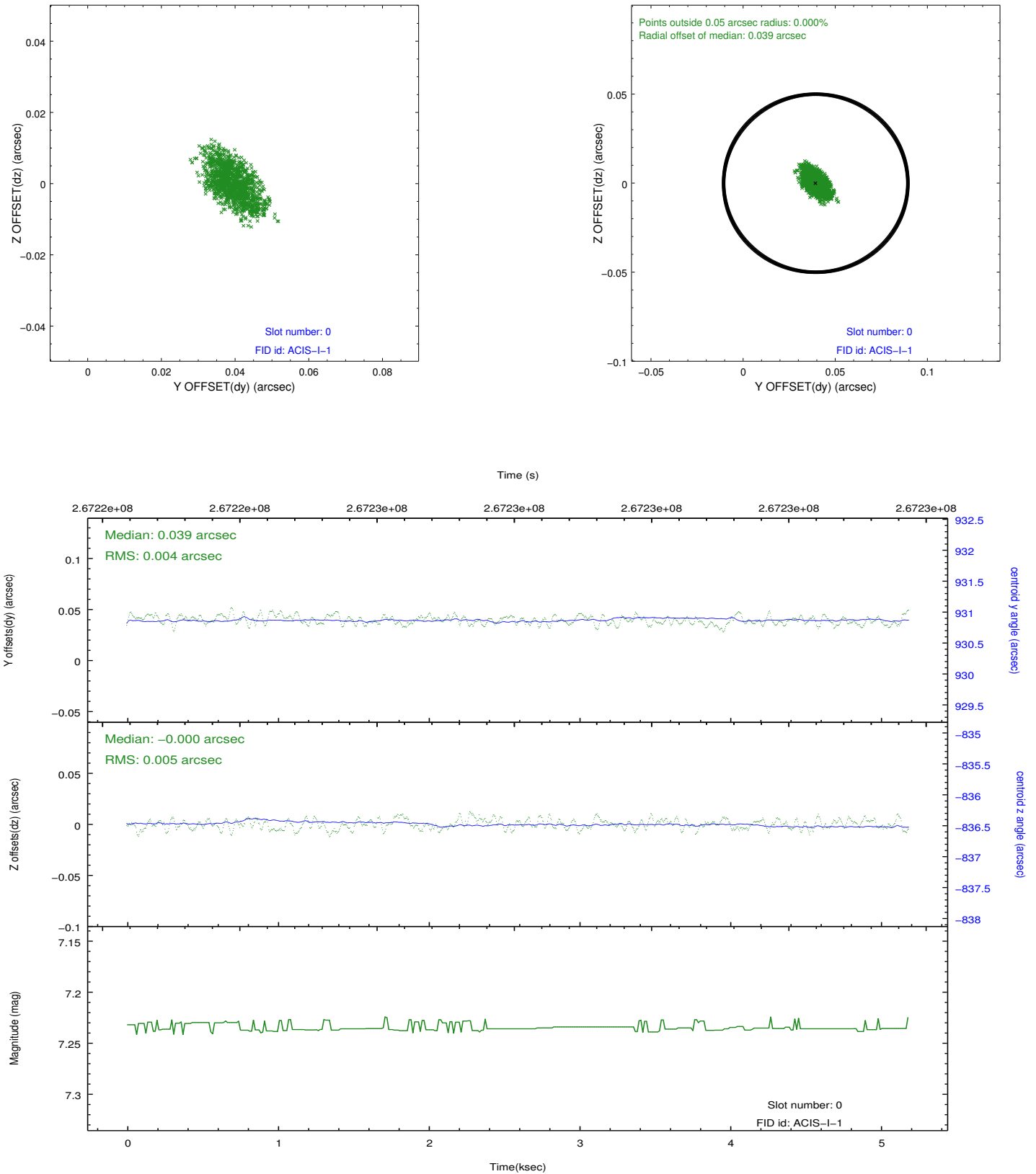


2.4.5 Slot 7

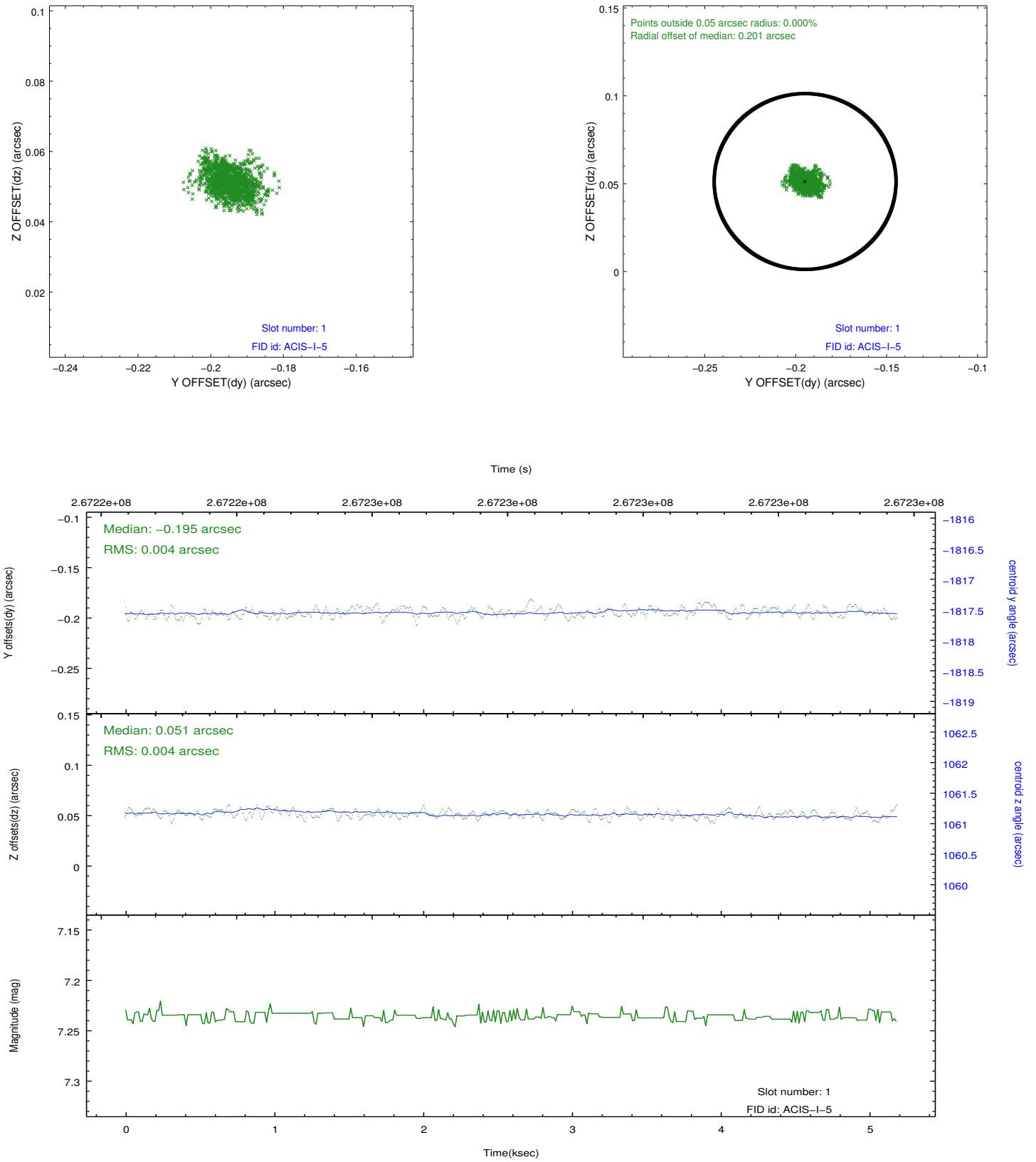


2.5 FID Slots

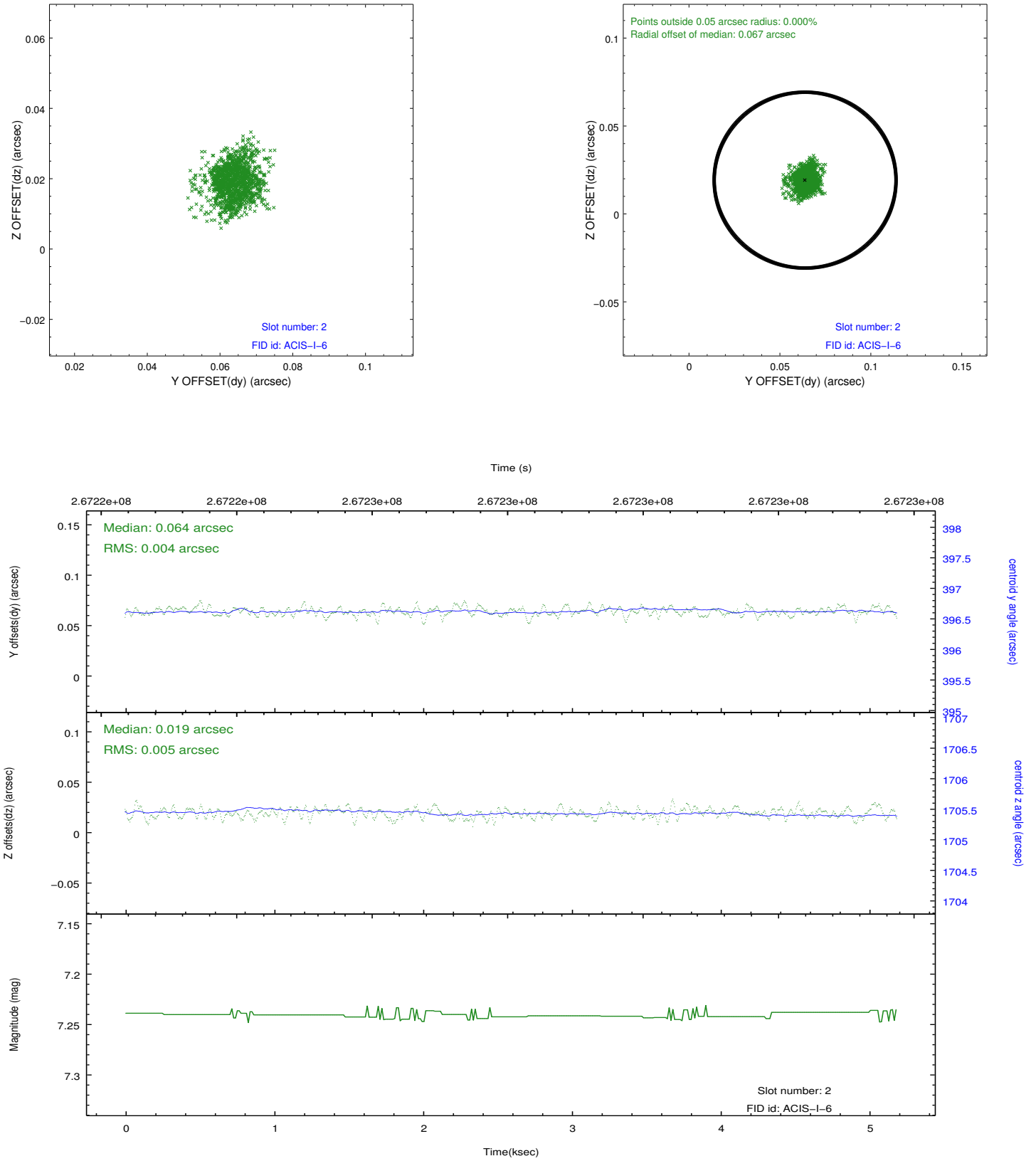
2.5.1 Slot 0



2.5.2 Slot 1



2.5.3 Slot 2



A Summary

A.1 Status

V&V Scientist	Jen Lauer
V&V Date (YYYY-MM-DD)	2012.04.04
V&V Edition	1
V&V Disposition and Status	OK
V&V Charge Time	4.77709999

A.2 Comments