

V&V Reference Report

L2 ASCDS Version : 8.4.3.1

Observation 6846 - L2 Version 2
Chandra X-Ray Center

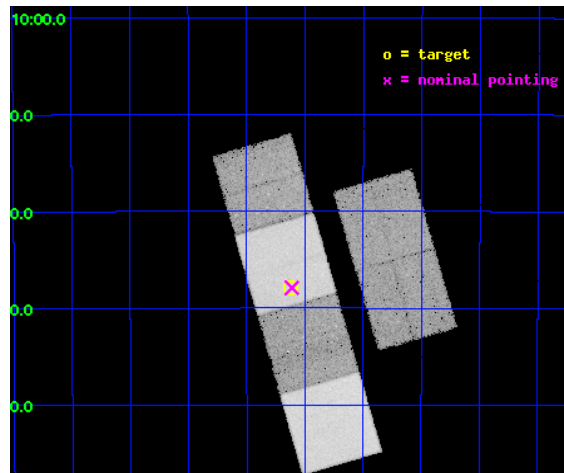
L2 Processing Date : Mar 30 2012

Contents

1	Front	2
2	OBI	3
2.1	OBI	3
2.1.1	Images	3
2.1.2	Bias	3
2.1.3	Parameters	4
2.1.4	Events	4
2.2	Compared Parameters	5
2.3	Aspect	6
2.4	Star Slots	9
2.4.1	Slot 3	9
2.4.2	Slot 4	10
2.4.3	Slot 5	11
2.4.4	Slot 6	12
2.4.5	Slot 7	13
2.5	FID Slots	14
2.5.1	Slot 0	14
2.5.2	Slot 1	15
2.5.3	Slot 2	16
A	Summary	17
A.1	Status	17
A.2	Comments	17

1 Front

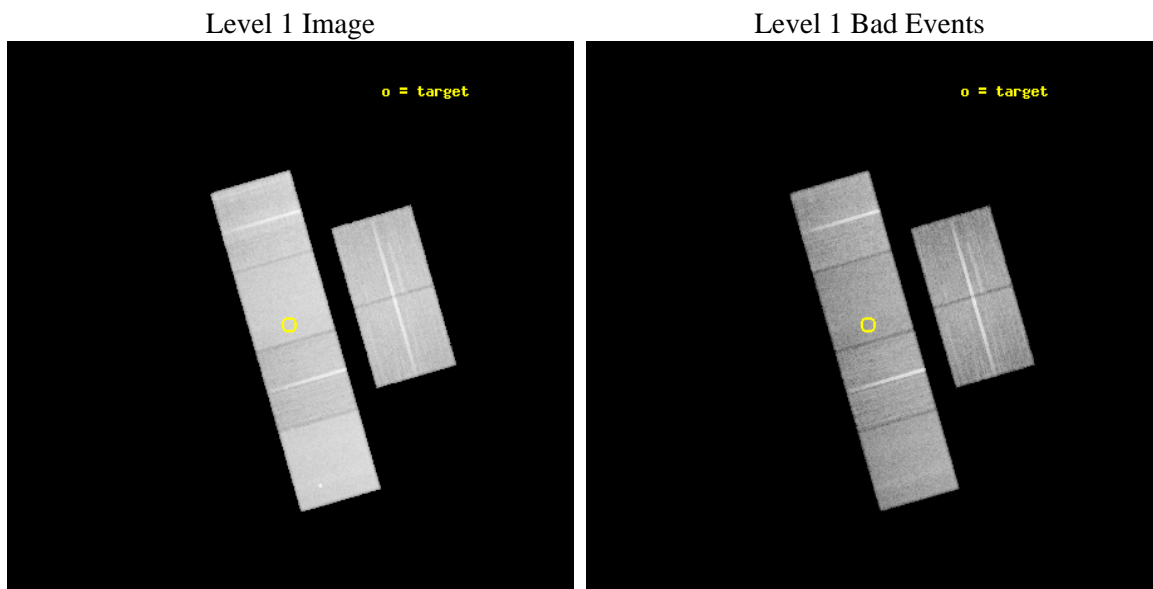
seq_num	701264	Sequence number
obs_id	6846	Observation id
title	Unveiling obscured AGNs in close pairs of similar sized galaxies	P
observer	Dr. Nora Loiseau	Principal investigator
object	AM 0630-353	Source name
dtcycle	0	
cycle	P	events from which exps? Prim/Second/Both
ra_targ	98.030417	Observer's specified target RA [deg]
dec_targ	-35.631111	Observer's specified target Dec [deg]
ra_nom	98.028032081747	Nominal RA [deg]
dec_nom	-35.631837671431	Nominal Dec [deg]
roll_nom	253.88209213985	Nominal Roll [deg]
revision	2	Processing version of data
ontime	24993.746124208	Sum of GTIs [s]
livetime	24677.260261356	Livetime [s]
ontime2	24993.787164211	Sum of GTIs [s]
ontime3	24993.623004198	Sum of GTIs [s]
ontime5	24993.705084205	Sum of GTIs [s]
ontime6	24993.664044201	Sum of GTIs [s]
ontime7	24993.746124208	Sum of GTIs [s]
ontime8	24987.100003749	Sum of GTIs [s]
l2events	348398	Number of level 2 events



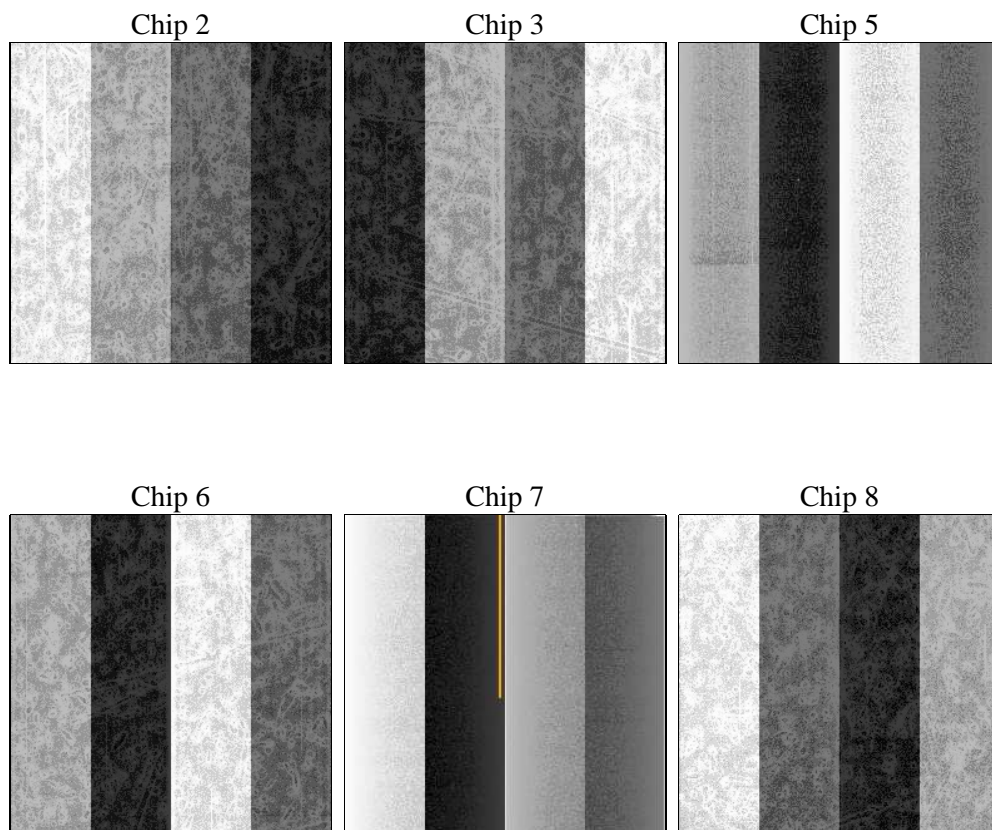
2 OBI

2.1 OBI

2.1.1 Images



2.1.2 Bias



2.1.3 Parameters

obi_num	0	Obi number	sched_exp_time	25000.000000	[s] Scheduled observation exposure time
ascdsver	8.4.3	Processing system revision	ontime	24993.746124208	Sum of GTIs [s]
caldsver	4.4.8	 	ontime2	24993.787164211	Sum of GTIs [s]
date	2012-03-30T05:49:34	Date and time of file creation	ontime3	24993.623004198	Sum of GTIs [s]
revision	2	Processing version of data	ontime5	24993.705084205	Sum of GTIs [s]
			ontime6	24993.664044201	Sum of GTIs [s]
			ontime7	24993.746124208	Sum of GTIs [s]
			ontime8	24987.100003749	Sum of GTIs [s]
			l1events	1522698	Number of level 1 events

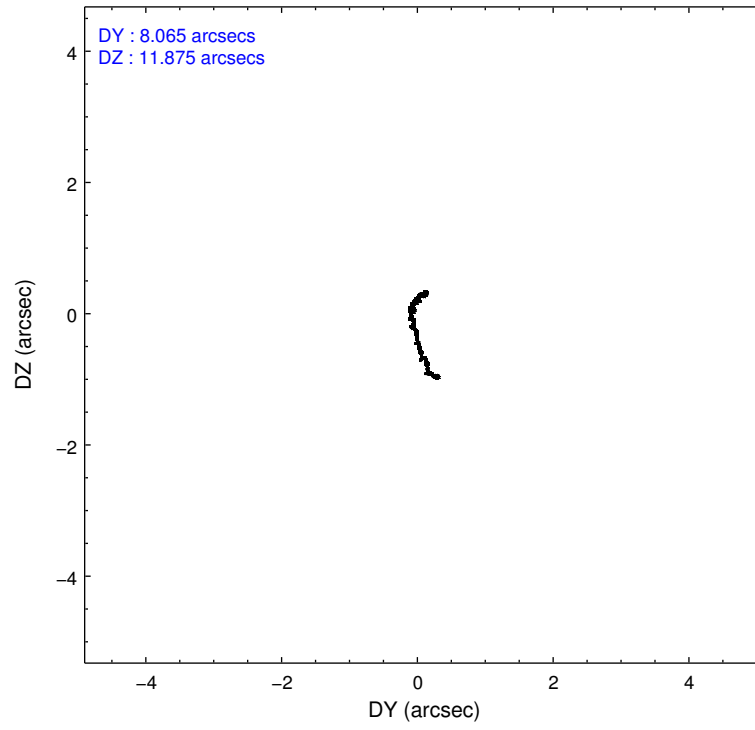
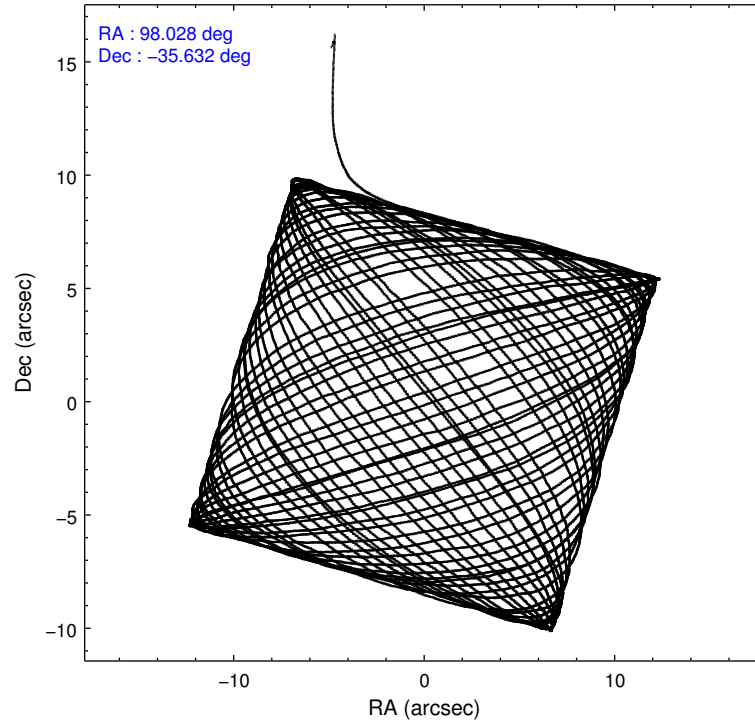
2.1.4 Events

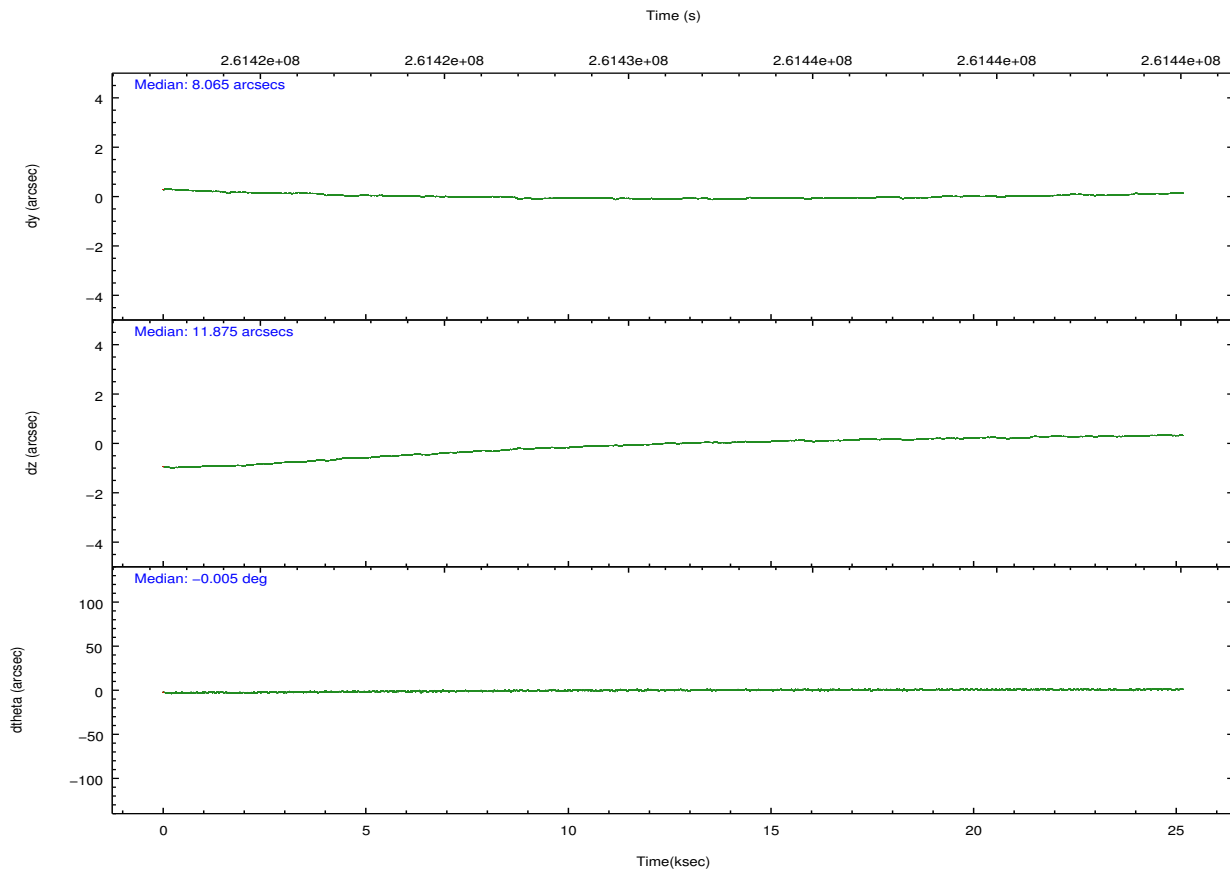
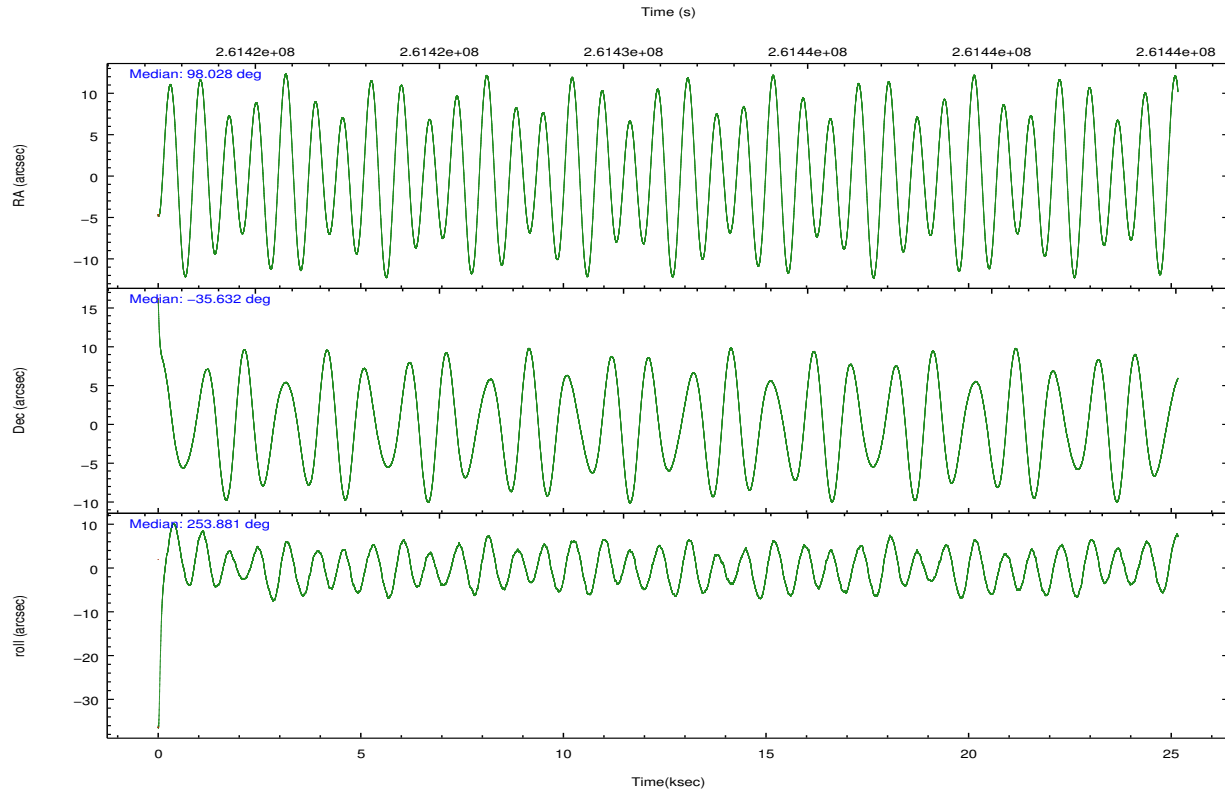
	ccd 2	ccd 3	ccd 5	ccd 6	ccd 7	ccd 8		ccd 2	ccd 3	ccd 5	ccd 6	ccd 7	ccd 8
level 1 events	218602	208632	318139	215526	291444	270355	grade 0 events	11310	10583	9504	9980	10486	18843
rejected events	193018	183965	175511	190067	170014	210848		5%	5%	2%	4%	3%	6%
rejected %	88%	88%	55%	88%	58%	77%	grade 1 events	137	137	552	118	287	174
								0%	0%	0%	0%	0%	0%
							grade 2 events	5351	4851	43569	5326	24267	12892
								2%	2%	13%	2%	8%	4%
							grade 3 events	2359	2435	5487	2528	10589	6574
								1%	1%	1%	1%	3%	2%
							grade 4 events	2324	2409	5254	2382	10686	5964
								1%	1%	1%	1%	3%	2%
							grade 5 events	8358	9658	23097	9762	27476	13028
								3%	4%	7%	4%	9%	4%
							grade 6 events	4246	4392	78831	5248	65415	15235
								1%	2%	24%	2%	22%	5%
							grade 7 events	184517	174167	151845	180182	142238	197645
								84%	83%	47%	83%	48%	73%

2.2 Compared Parameters

Parameter	Planned	Actual	Parameter	Planned	Actual
Instrument	ACIS	ACIS	Obspar format version number	7	7
Detector	ACIS-235678	ACIS-235678	Obspar file type	PREDICTED	ACTUAL
Grating	NONE	NONE	Obspar update status	NONE	UPDATED
Data mode	FAINT	FAINT	Number of optional ACIS chips dropped	0	0
Observation mode	POINTING	POINTING	On-chip summing requested	N	N
[deg] Pointing RA	98.019544	98.02803208174691	Subarray requested	NONE	NONE
[deg] Pointing Dec	-35.605501	-35.63183767143076	Alternating exposures requested	N	N
[deg] Pointing Roll	253.720534	253.8820921398517	[s] Primary exposure time	0.000000	3.2
[mm] SIM focus pos	-0.684267	-0.6828225247311905			
[mm] SIM defocus	0	0.001444936568705701			
[mm] SIM translation stage pos	-190.132523	-190.1400660498719			
[mm] SIM translation stage offset	0	0.00754346686406393			
[s] Observation start time (MET)	261418790.184000	261417754.95706			
Observation start date	2006-04-14T16:18:45	2006-04-14T16:02:34			
[s] Observation end time (MET)	261443790.184000	261444377.7958			
Observation end date	2006-04-14T23:15:25	2006-04-14T23:26:17			
Read mode	TIMED	TIMED			

2.3 Aspect



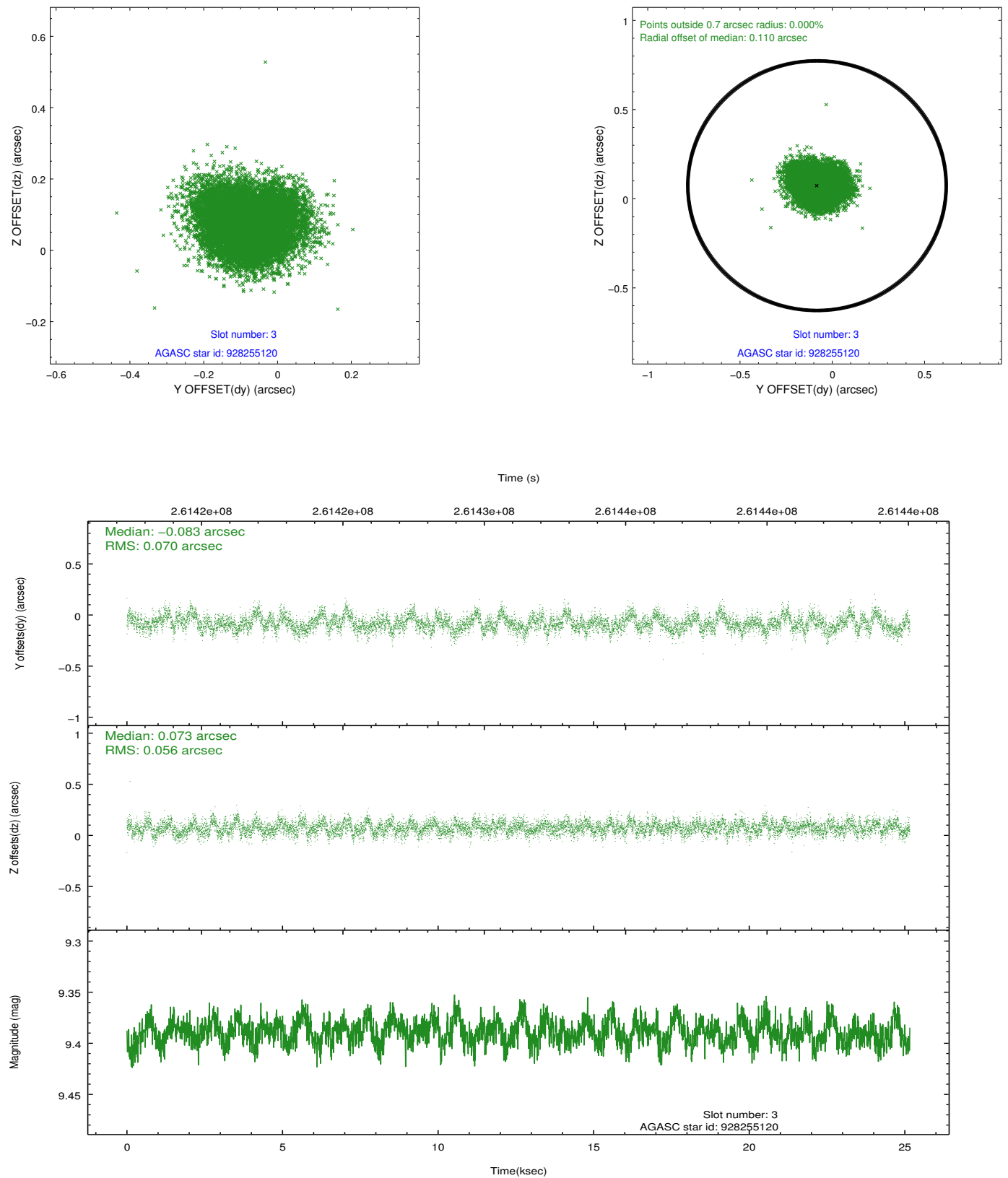


Slot Statistics

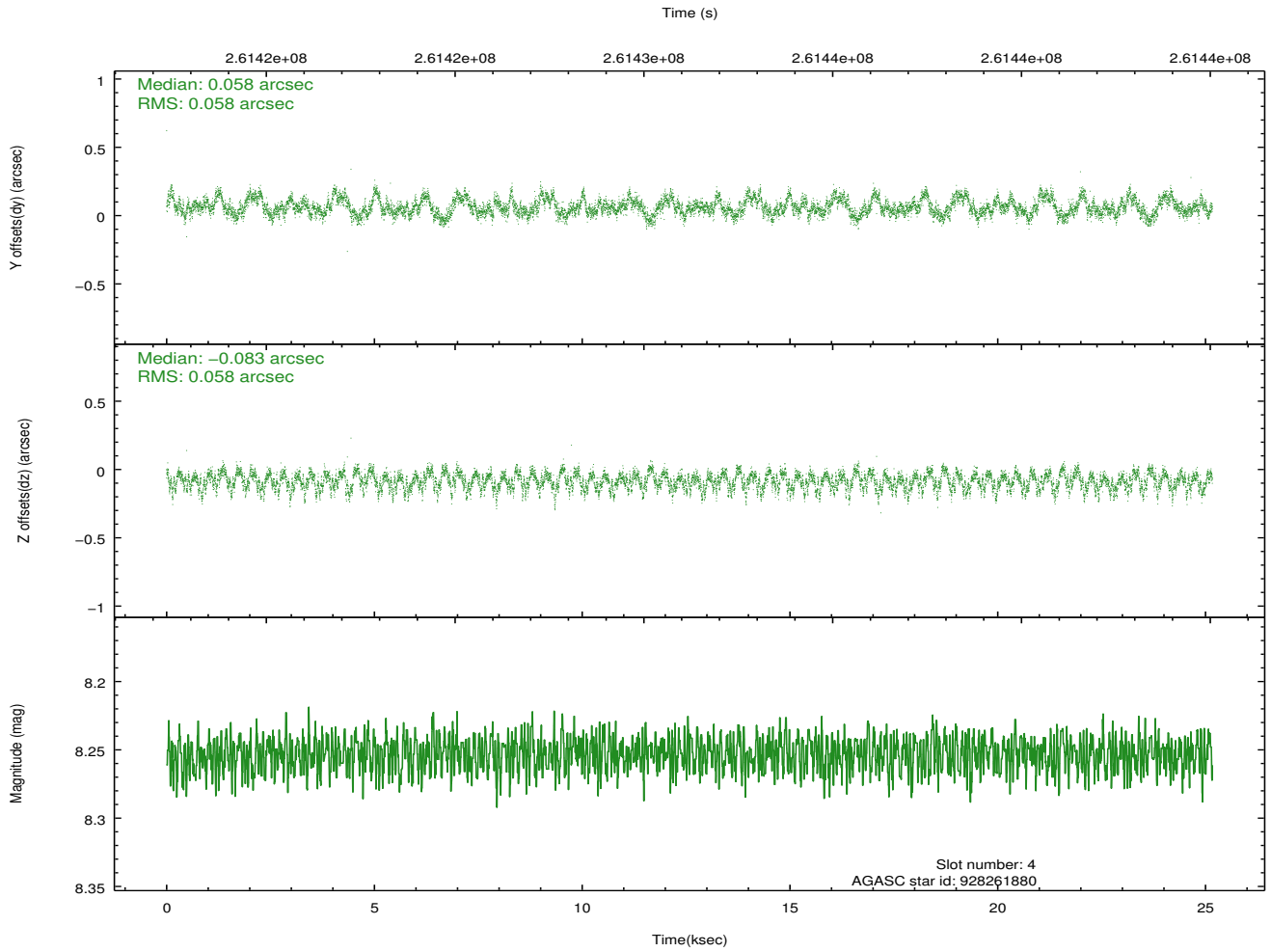
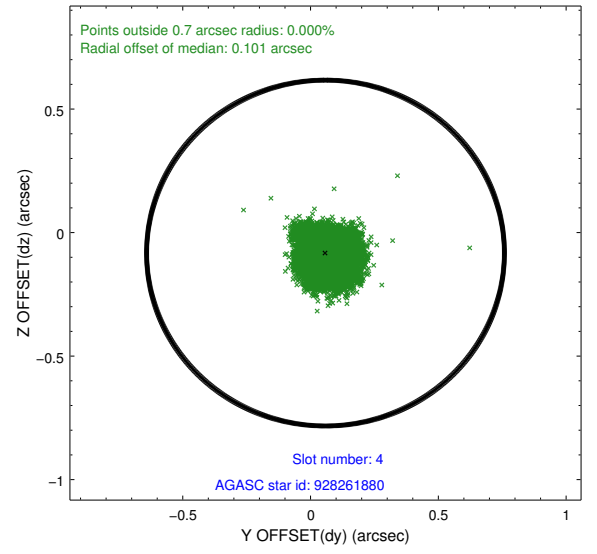
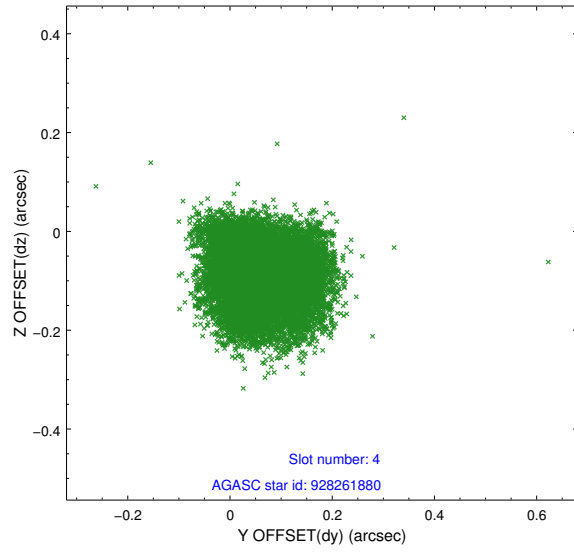
slot	status	id	mag	n_pts	med_dy	med_dz	dr1	dr2	ra	dec	mean_y	mean_z
0	FID	ACIS-S-1	7.19	6138	0.084	-0.100	0.012	0.031	0.000000	0.000000	935.23	-1728.76
1	FID	ACIS-S-5	7.24	6139	-0.114	0.053	0.012	0.026	0.000000	0.000000	-1813.87	168.86
2	FID	ACIS-S-6	7.35	6138	0.008	0.061	0.020	0.031	0.000000	0.000000	400.63	812.94
3	GUIDE	928255120	9.39	12271	-0.083	0.073	0.096	0.155	98.589042	-35.213353	-1819.71	1213.95
4	GUIDE	928261880	8.25	12276	0.058	-0.083	0.089	0.139	97.763158	-35.479290	-223.51	-847.89
5	GUIDE	928781496	8.87	12268	-0.075	-0.013	0.068	0.111	97.374642	-35.978011	1820.28	-1425.58
6	GUIDE	928782032	9.77	12250	0.016	-0.116	0.112	0.183	98.110019	-35.872502	849.37	522.82
7	GUIDE	928782912	9.55	12262	0.079	0.141	0.110	0.177	98.288229	-36.303405	2194.83	1453.45

2.4 Star Slots

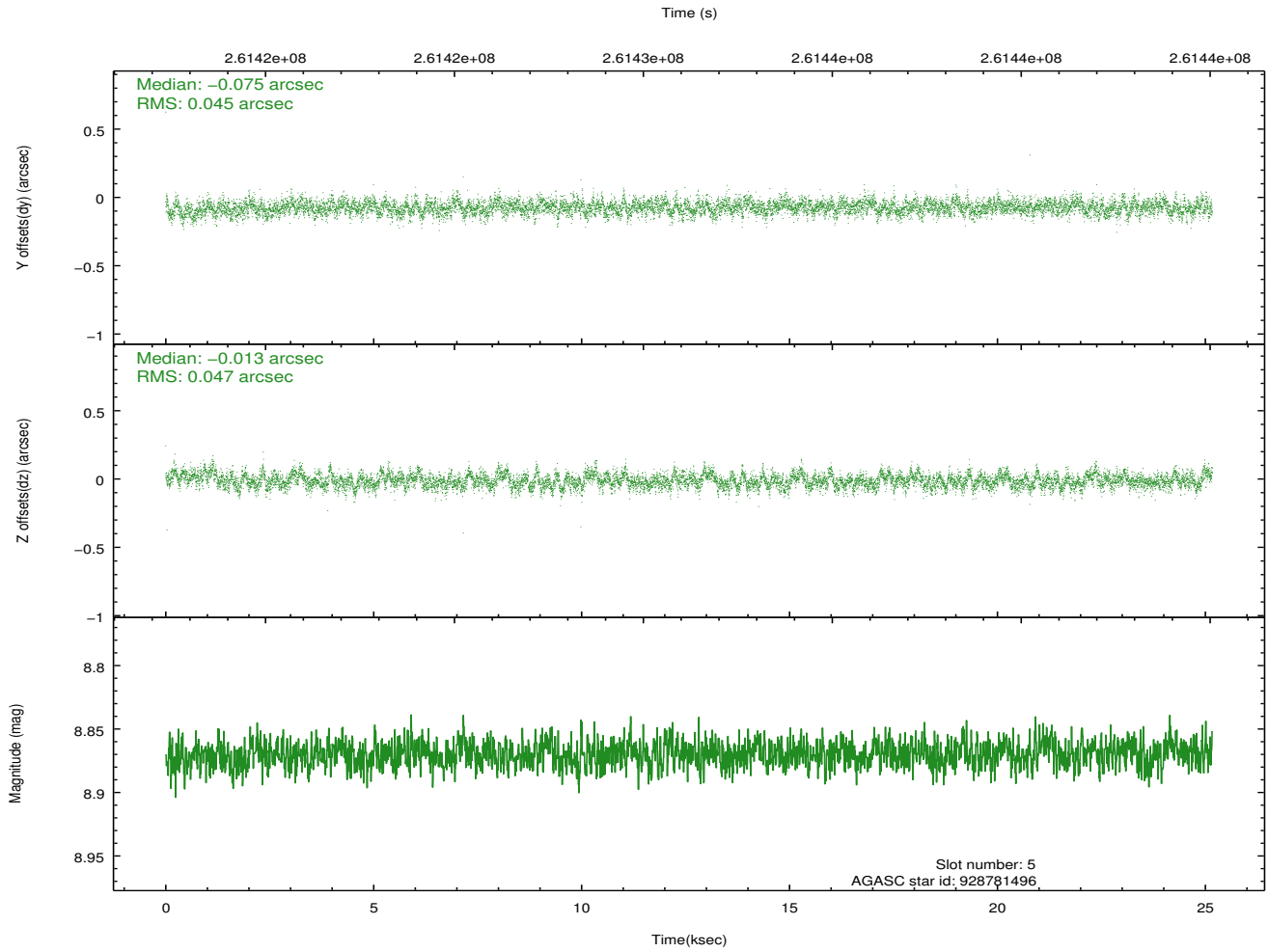
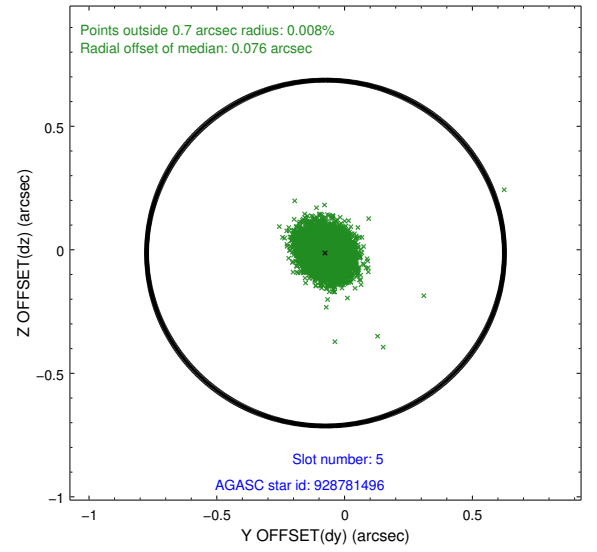
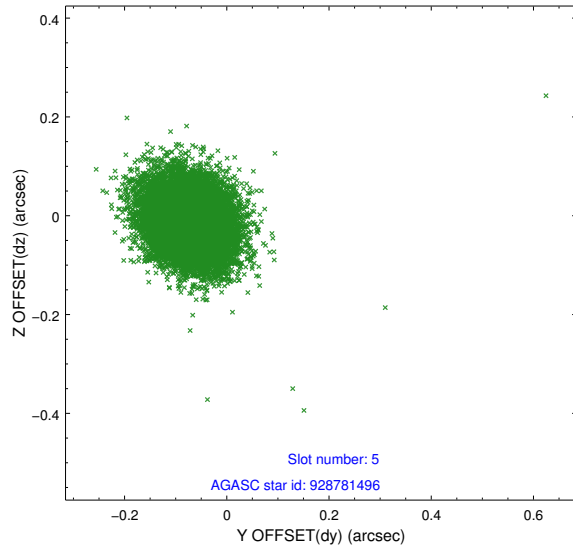
2.4.1 Slot 3



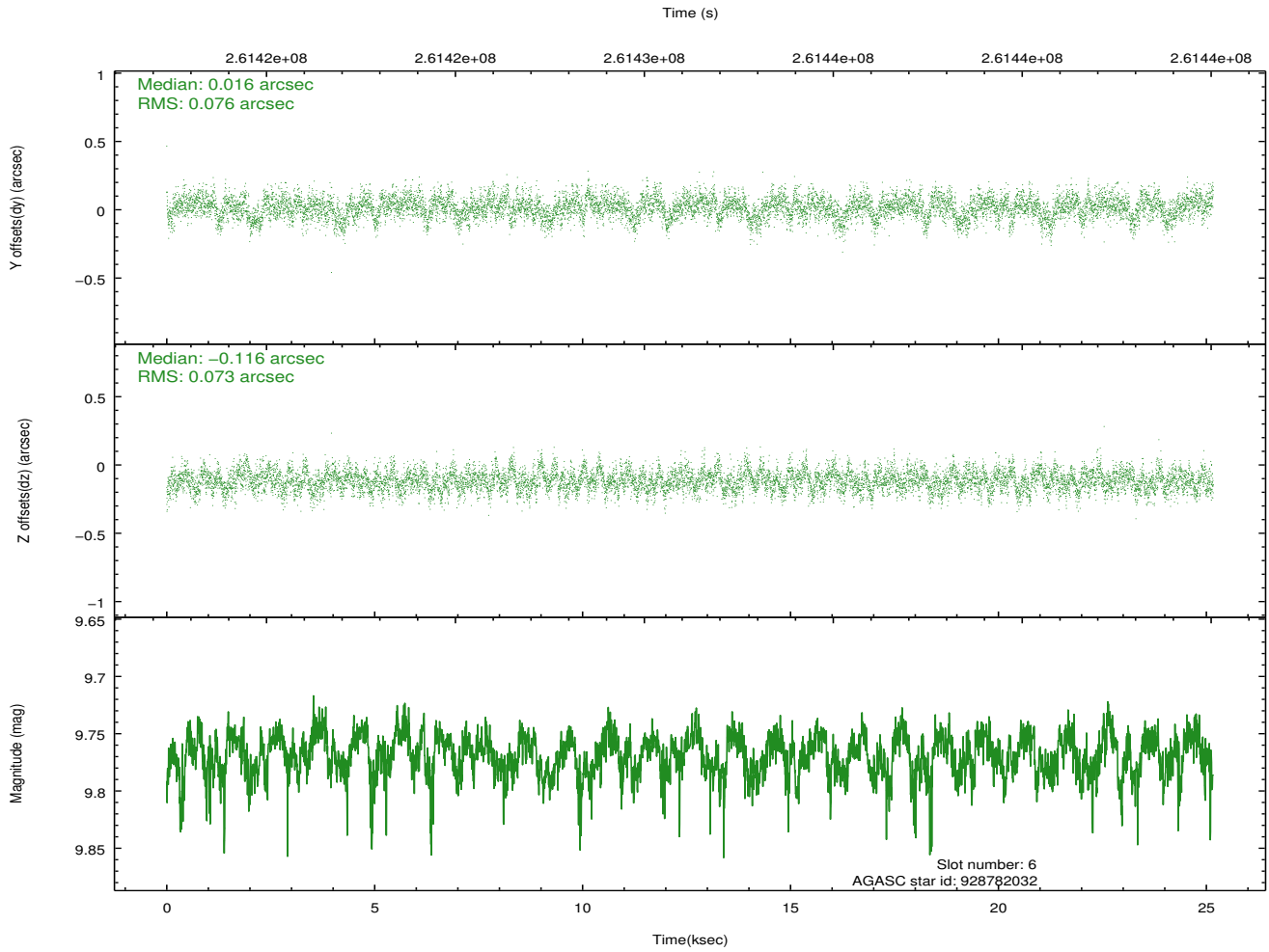
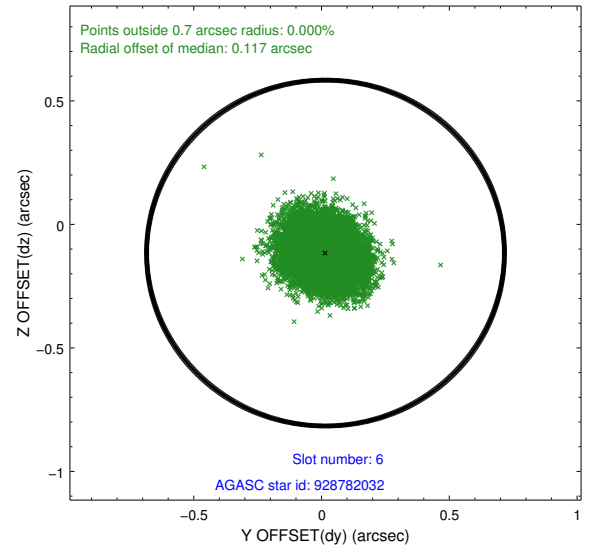
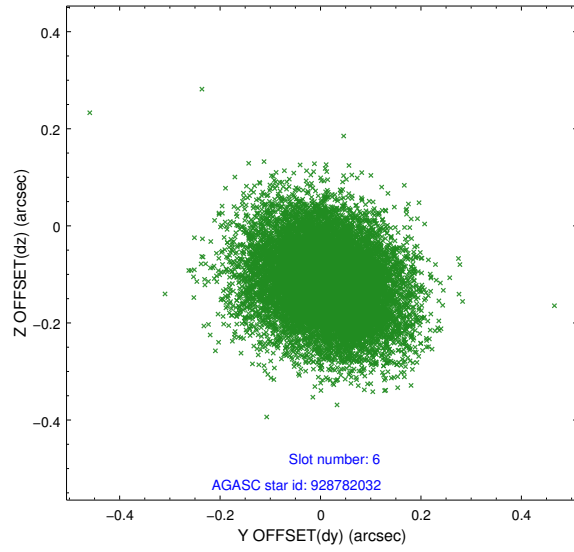
2.4.2 Slot 4



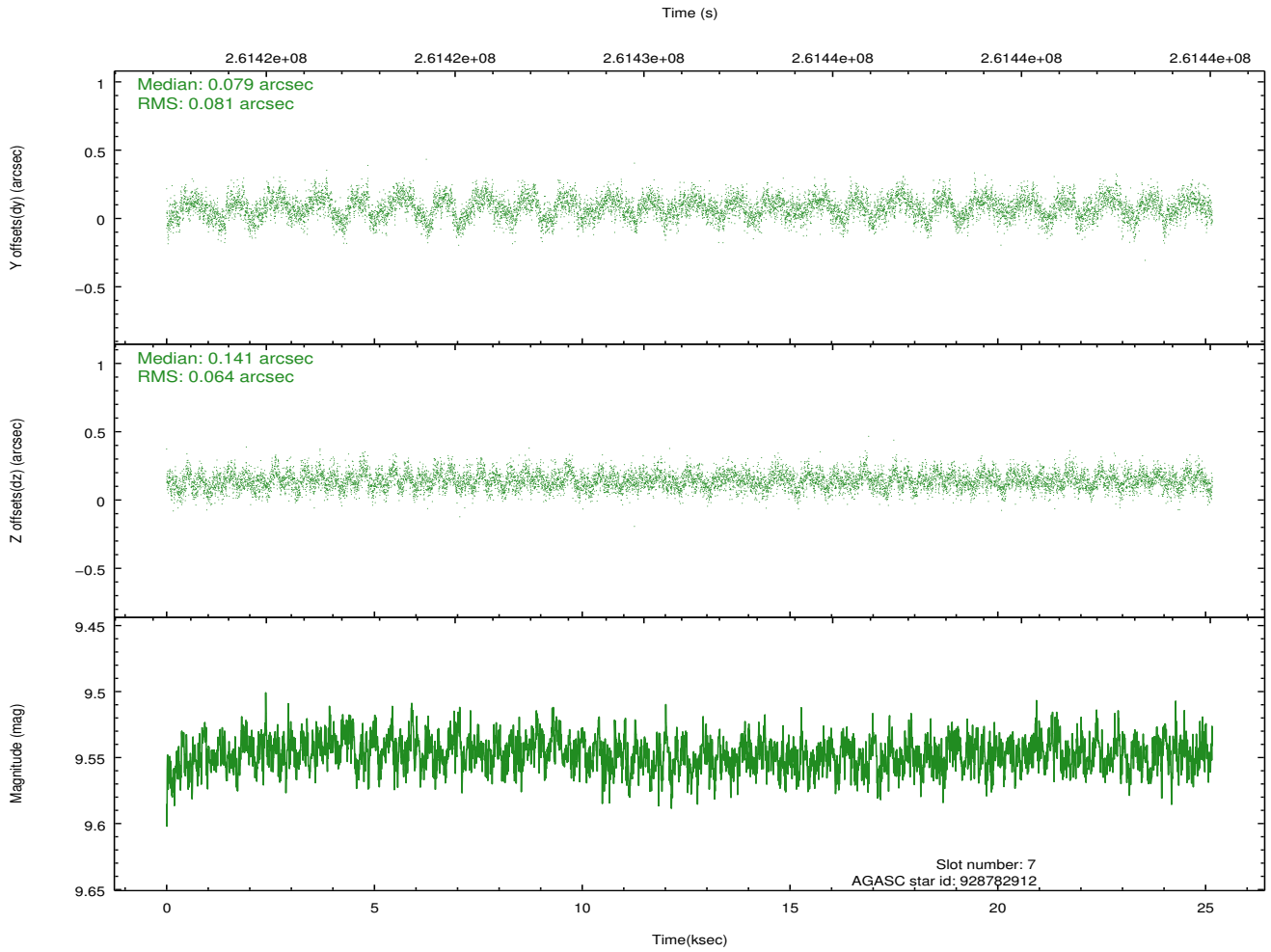
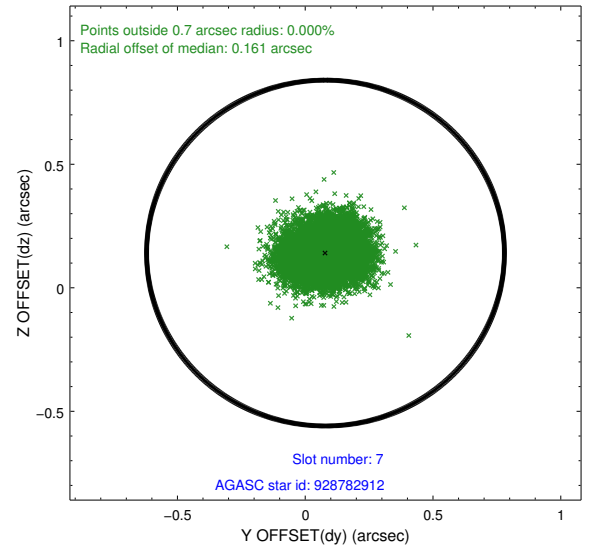
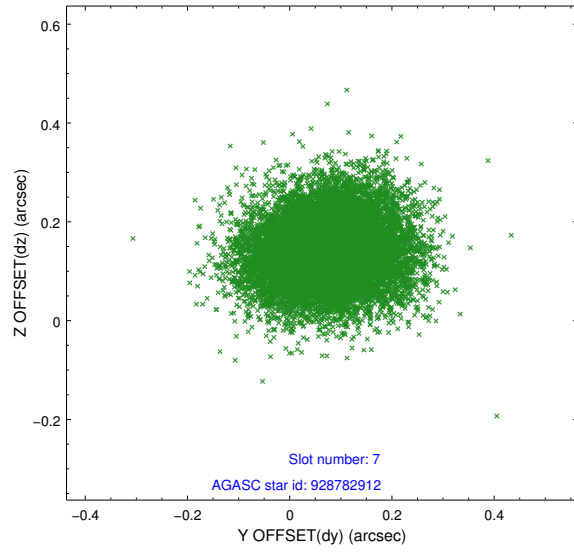
2.4.3 Slot 5



2.4.4 Slot 6

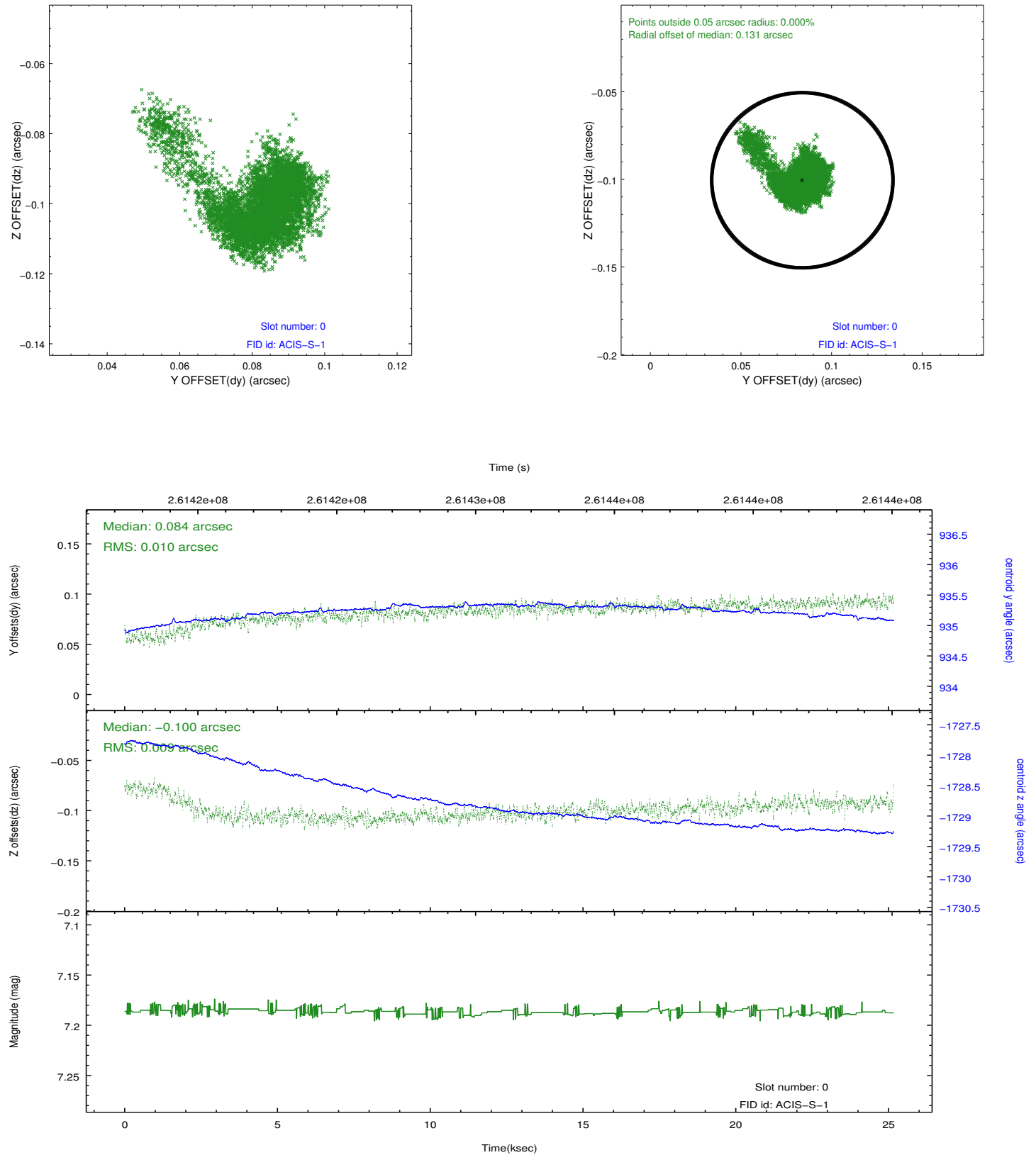


2.4.5 Slot 7

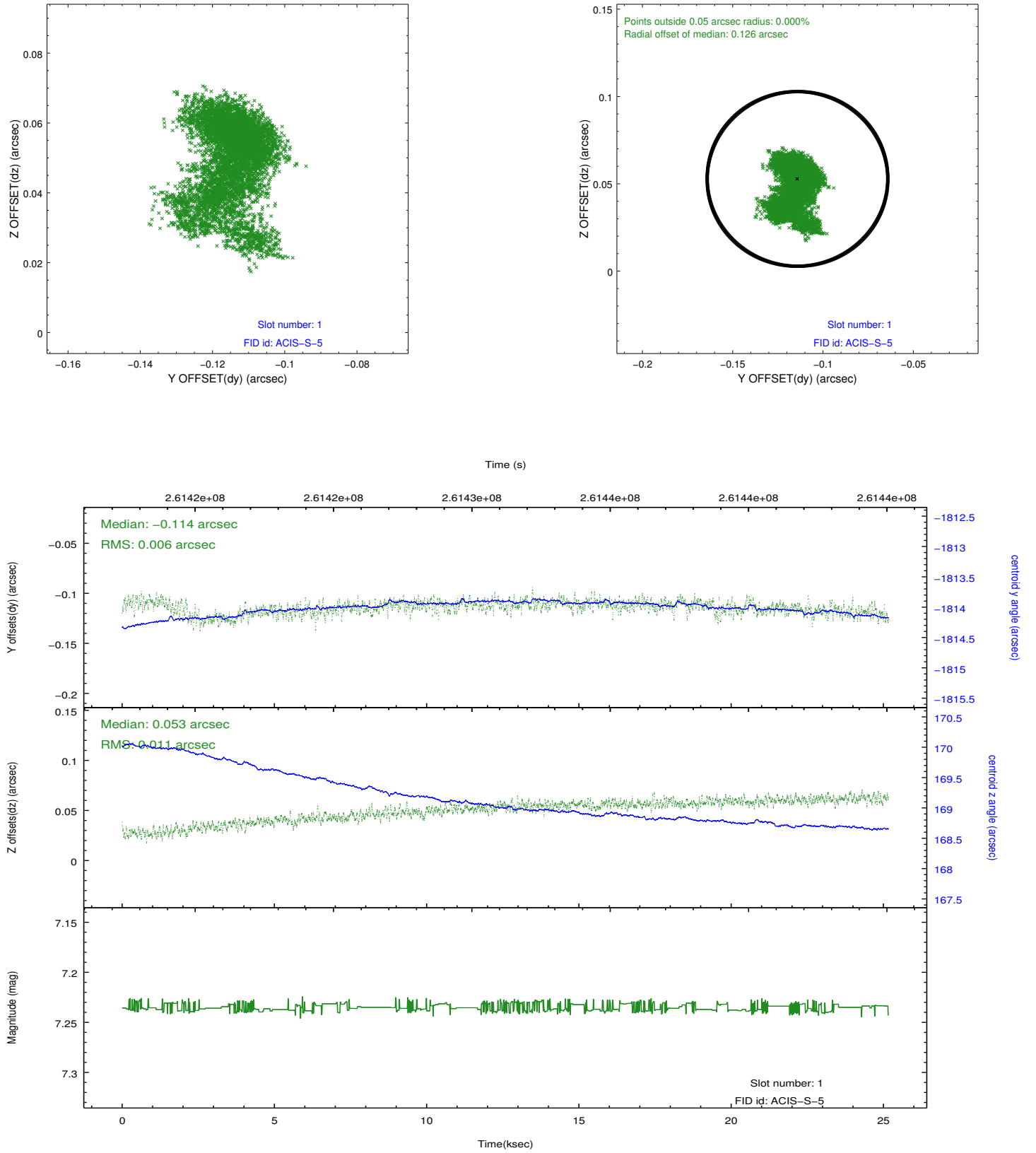


2.5 FID Slots

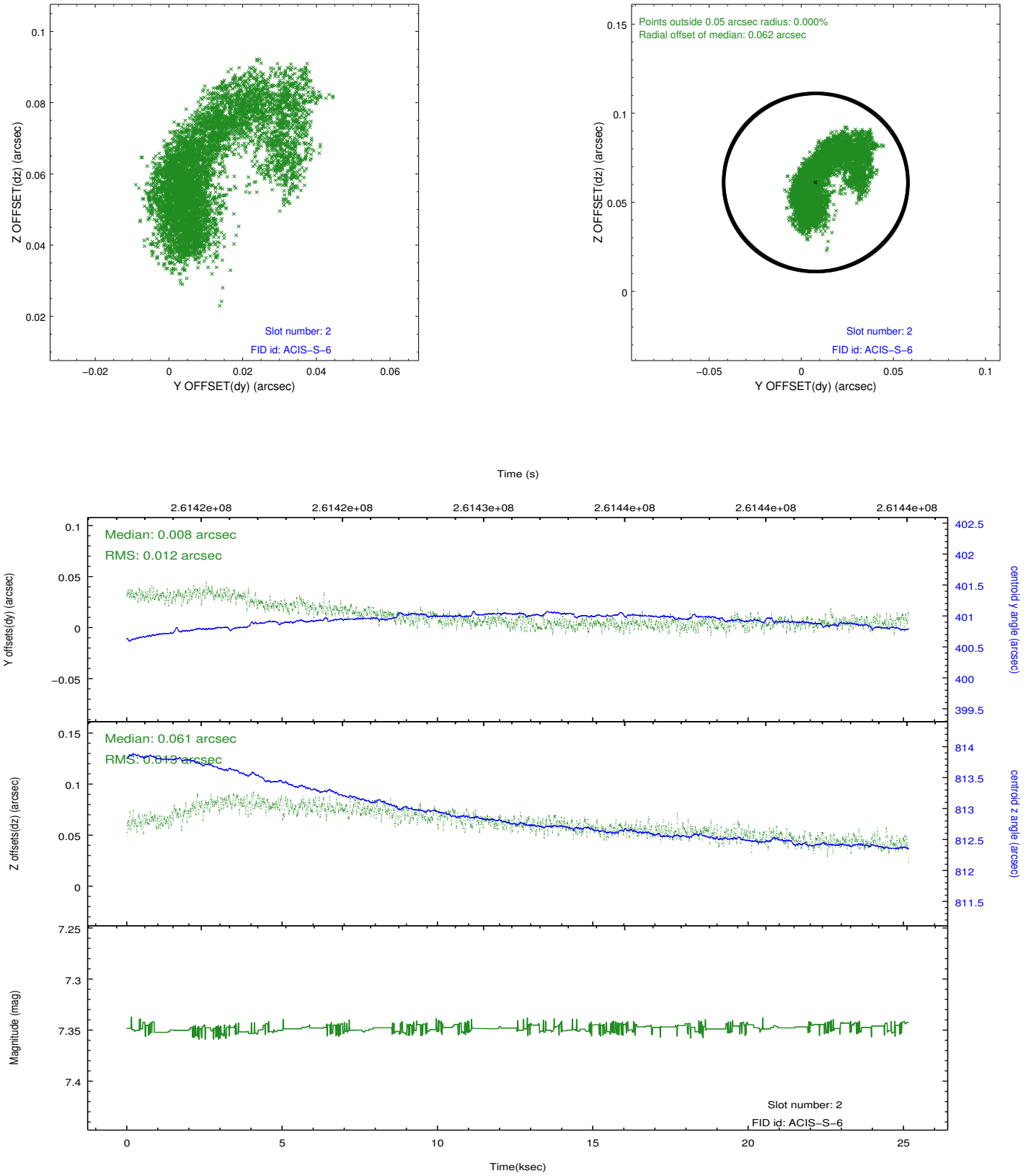
2.5.1 Slot 0



2.5.2 Slot 1



2.5.3 Slot 2



A Summary

A.1 Status

V&V Scientist	Jen Lauer
V&V Date (YYYY-MM-DD)	2012.04.02
V&V Edition	1
V&V Disposition and Status	OK
V&V Charge Time	24.9951999

A.2 Comments